

Data Path : Z:\pestpcbsrv\HPCHEM1\ECD_O\Data\P0042825\
 Data File : P0110823.D
 Signal(s) : Signal #1: ECD1A.ch Signal #2: ECD2B.ch
 Acq On : 28 Apr 2025 23:18
 Operator : YP/AJ
 Sample : Q1860-24
 Misc :
 ALS Vial : 32 Sample Multiplier: 1

Instrument :
 ECD_O
ClientSampleId :
 P001-SS018-01

Manual Integrations
APPROVED

Reviewed By :Yogesh Patel 04/29/2025
 Supervised By :mohammad ahmed 05/02/2025

Integration File signal 1: autoint1.e
 Integration File signal 2: autoint2.e
 Quant Time: Apr 29 01:07:06 2025
 Quant Method : Z:\pestpcbsrv\HPCHEM1\ECD_O\methods\P0041025.M
 Quant Title : GC EXTRACTABLES
 QLast Update : Fri Apr 11 02:12:41 2025
 Response via : Initial Calibration
 Integrator: ChemStation

Volume Inj. : 2 µl
 Signal #1 Phase : ZB-MR1 Signal #2 Phase: ZB-MR2
 Signal #1 Info : 30Mx0.32mmx 0.50µ Signal #2 Info : 30M x 0.32mm x 0.25µm

Compound	RT#1	RT#2	Resp#1	Resp#2	ng/ml	ng/ml

System Monitoring Compounds						
1) SA Tetrachlo...	3.685	3.683	183.3E6	97114441	20.952	19.463
2) SA Decachlor...	8.726	8.678	123.7E6	31570560	15.669	16.400
Target Compounds						
26) L6 AR-1254-1	5.582	5.561	100.1E6	52178364	179.425m	173.063m
27) L6 AR-1254-2	5.731	5.710	97814421	55867107	201.387m	211.070
28) L6 AR-1254-3	6.136	6.111	162.4E6	79064247	207.395m	195.987m
29) L6 AR-1254-4	6.365	6.339	72041546	34588375	147.746m	150.572
30) L6 AR-1254-5	6.784	6.755	204.9E6	98625787	292.398m	296.805

(f)=RT Delta > 1/2 Window (#)=Amounts differ by > 25% (m)=manual int.

Data Path : Z:\pestpcbsrv\HPCHEM1\ECD_O\Data\PO042825\
 Data File : PO110823.D
 Signal(s) : Signal #1: ECD1A.ch Signal #2: ECD2B.ch
 Acq On : 28 Apr 2025 23:18
 Operator : YP/AJ
 Sample : Q1860-24
 Misc :
 ALS Vial : 32 Sample Multiplier: 1

Instrument :

ECD_O

ClientSampleId :

P001-SS018-01

Manual Integrations

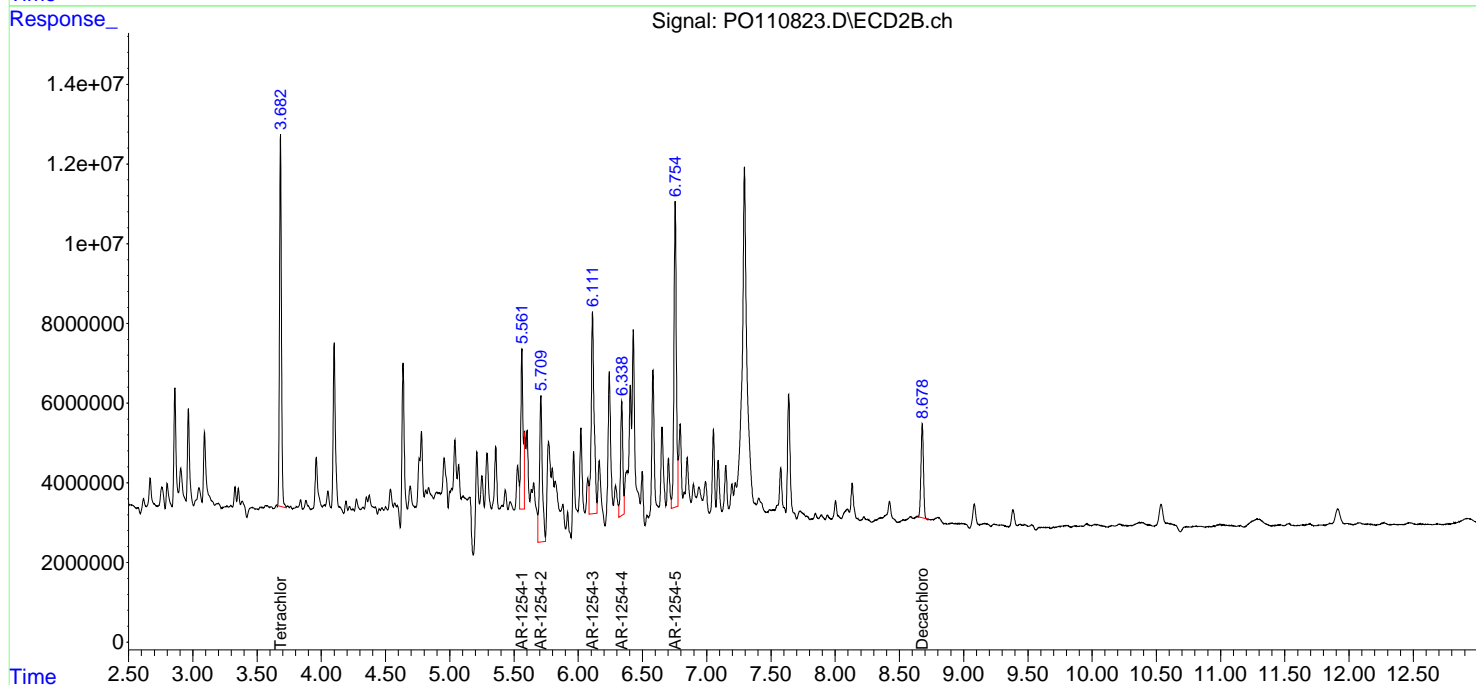
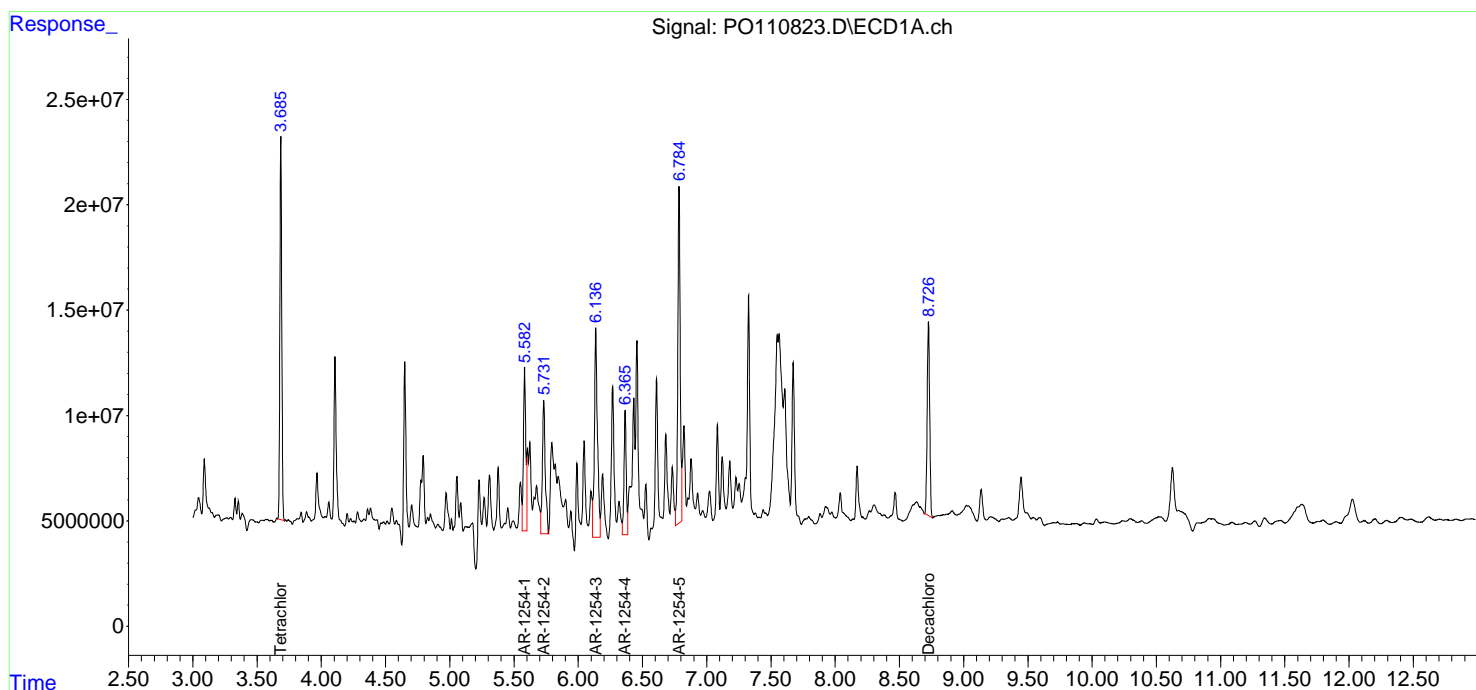
APPROVED

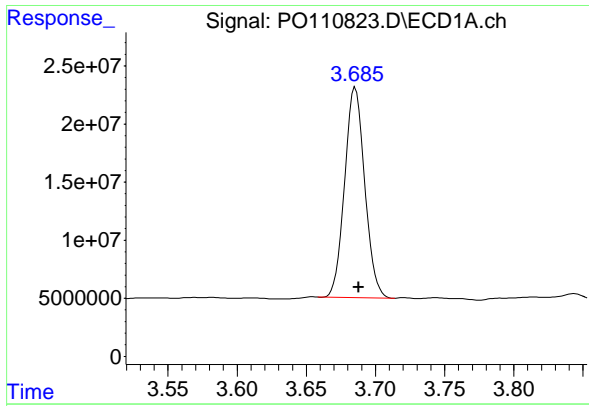
Reviewed By :Yogesh Patel 04/29/2025

Supervised By :mohammad ahmed 05/02/2025

Integration File signal 1: autoint1.e
 Integration File signal 2: autoint2.e
 Quant Time: Apr 29 01:07:06 2025
 Quant Method : Z:\pestpcbsrv\HPCHEM1\ECD_O\methods\PO041025.M
 Quant Title : GC EXTRACTABLES
 QLast Update : Fri Apr 11 02:12:41 2025
 Response via : Initial Calibration
 Integrator: ChemStation

Volume Inj. : 2 µl
 Signal #1 Phase : ZB-MR1 Signal #2 Phase: ZB-MR2
 Signal #1 Info : 30Mx0.32mmx 0.50µm Signal #2 Info : 30M x 0.32mm x 0.25µm





#1 Tetrachloro-m-xylene

R.T.: 3.685 min
 Delta R.T.: -0.003 min
 Response: 183310612
 Conc: 20.95 ng/ml

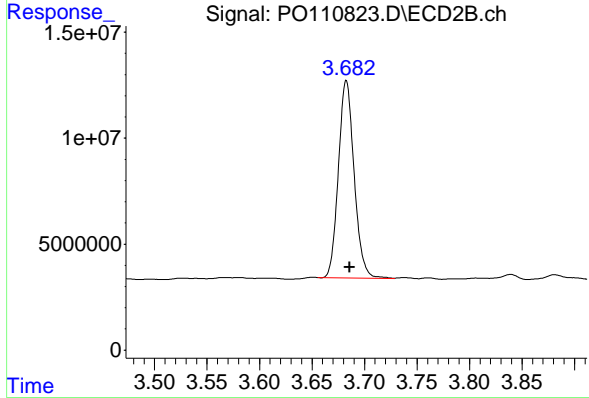
Instrument :

ECD_O

ClientSampleId :
 P001-SS018-01

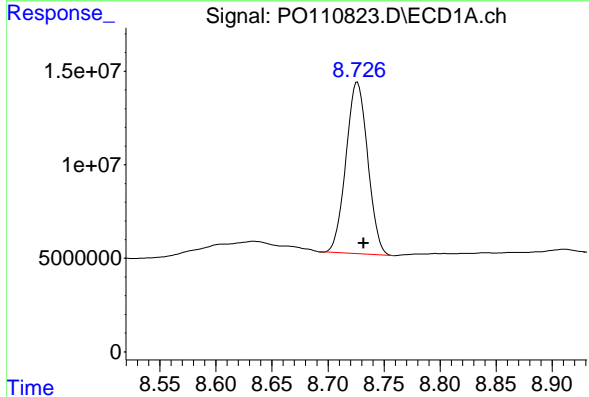
Manual Integrations
 APPROVED

Reviewed By :Yogesh Patel 04/29/2025
 Supervised By :mohammad ahmed 05/02/2025



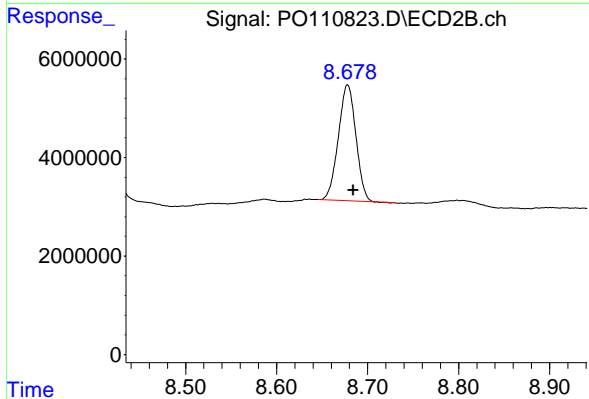
#1 Tetrachloro-m-xylene

R.T.: 3.683 min
 Delta R.T.: -0.003 min
 Response: 97114441
 Conc: 19.46 ng/ml



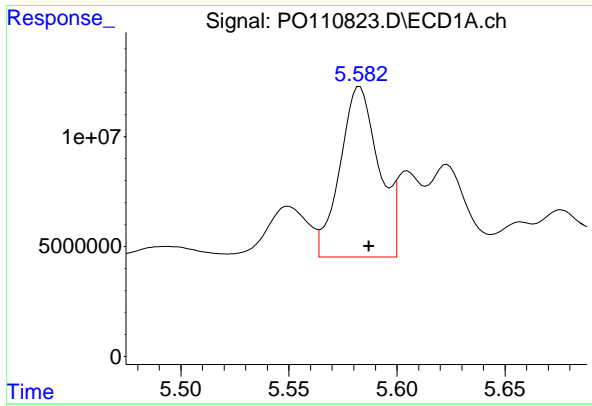
#2 Decachlorobiphenyl

R.T.: 8.726 min
 Delta R.T.: -0.005 min
 Response: 123709046
 Conc: 15.67 ng/ml



#2 Decachlorobiphenyl

R.T.: 8.678 min
 Delta R.T.: -0.006 min
 Response: 31570560
 Conc: 16.40 ng/ml



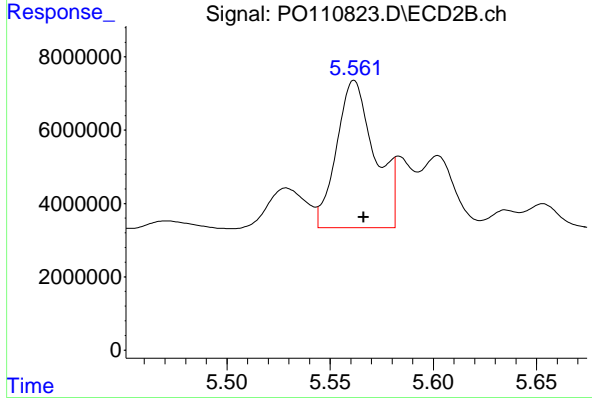
#26 AR-1254-1

R.T.: 5.582 min
 Delta R.T.: -0.005 min
 Response: 100117121
 Conc: 179.42 ng/ml

Instrument :
 ECD_O
 ClientSampleId :
 P001-SS018-01

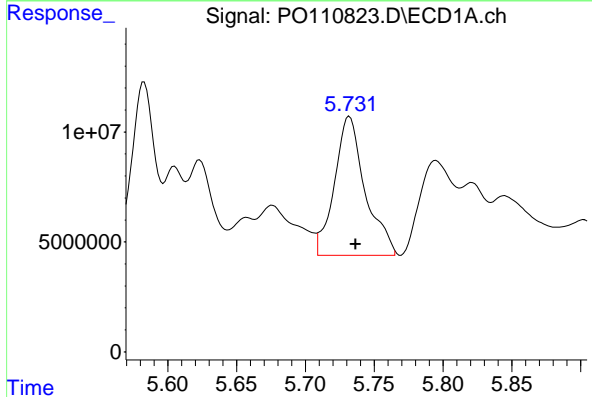
Manual Integrations
 APPROVED

Reviewed By :Yogesh Patel 04/29/2025
 Supervised By :mohammad ahmed 05/02/2025



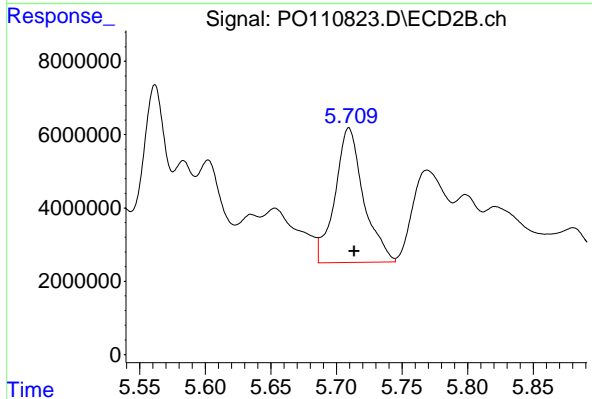
#26 AR-1254-1

R.T.: 5.561 min
 Delta R.T.: -0.005 min
 Response: 52178364
 Conc: 173.06 ng/ml m



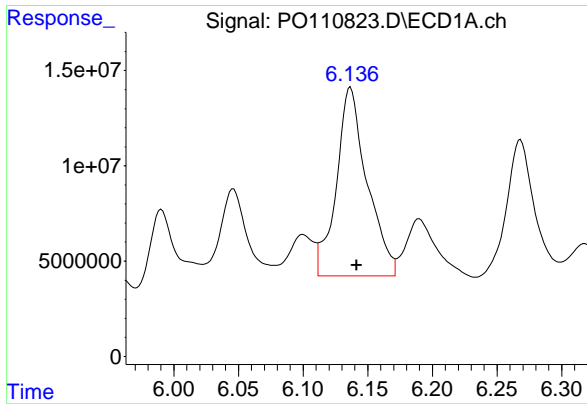
#27 AR-1254-2

R.T.: 5.731 min
 Delta R.T.: -0.005 min
 Response: 97814421
 Conc: 201.39 ng/ml m



#27 AR-1254-2

R.T.: 5.710 min
 Delta R.T.: -0.004 min
 Response: 55867107
 Conc: 211.07 ng/ml



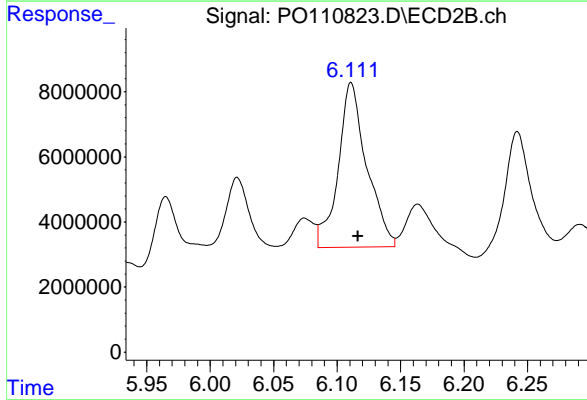
#28 AR-1254-3

R.T.: 6.136 min
 Delta R.T.: -0.006 min
 Response: 162435879
 Conc: 207.39 ng/ml

Instrument :
 ECD_O
 ClientSampleId :
 P001-SS018-01

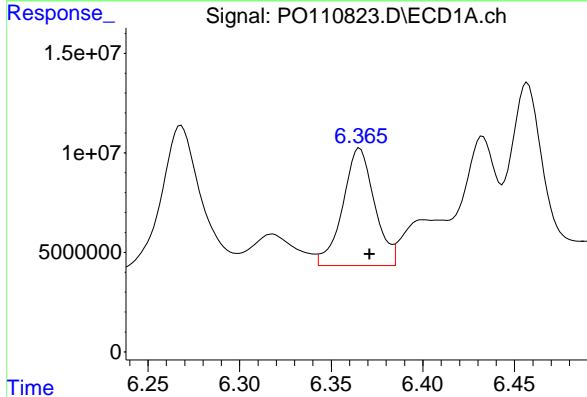
Manual Integrations
 APPROVED

Reviewed By :Yogesh Patel 04/29/2025
 Supervised By :mohammad ahmed 05/02/2025



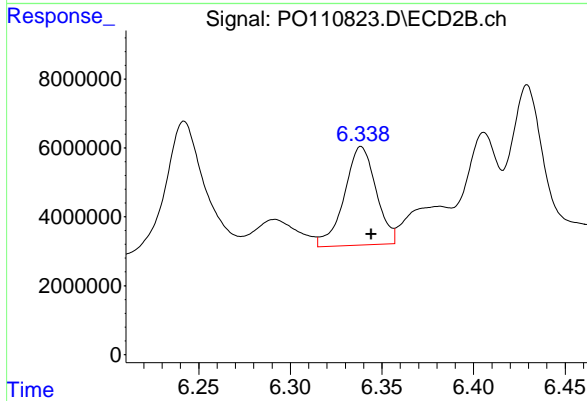
#28 AR-1254-3

R.T.: 6.111 min
 Delta R.T.: -0.006 min
 Response: 79064247
 Conc: 195.99 ng/ml m



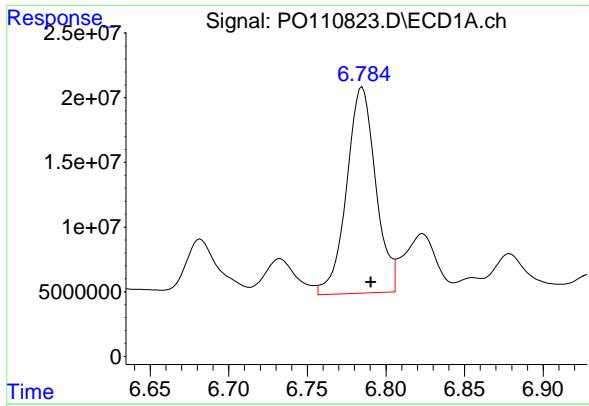
#29 AR-1254-4

R.T.: 6.365 min
 Delta R.T.: -0.006 min
 Response: 72041546
 Conc: 147.75 ng/ml m



#29 AR-1254-4

R.T.: 6.339 min
 Delta R.T.: -0.006 min
 Response: 34588375
 Conc: 150.57 ng/ml



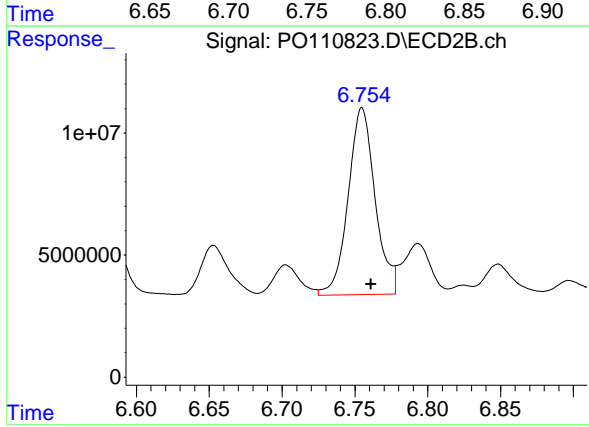
#30 AR-1254-5

R.T.: 6.784 min
 Delta R.T.: -0.006 min
 Response: 204941862
 Conc: 292.40 ng/ml

Instrument :
 ECD_O
 ClientSampleId :
 P001-SS018-01

Manual Integrations
 APPROVED

Reviewed By :Yogesh Patel 04/29/2025
 Supervised By :mohammad ahmed 05/02/2025



#30 AR-1254-5

R.T.: 6.755 min
 Delta R.T.: -0.006 min
 Response: 98625787
 Conc: 296.80 ng/ml