

Data Path : Z:\pestpcbsrv\HPCHEM1\ECD\_0\Data\P0042825\  
 Data File : P0110827.D  
 Signal(s) : Signal #1: ECD1A.ch Signal #2: ECD2B.ch  
 Acq On : 29 Apr 2025 00:31  
 Operator : YP/AJ  
 Sample : Q1860-23DL 5X  
 Misc :  
 ALS Vial : 36 Sample Multiplier: 1

**Instrument :**  
 ECD\_0  
**ClientSampleId :**  
 P001-SS017-02DL

**Manual Integrations**  
**APPROVED**

Reviewed By :Yogesh Patel 04/29/2025  
 Supervised By :mohammad ahmed 05/02/2025

Integration File signal 1: autoint1.e  
 Integration File signal 2: autoint2.e  
 Quant Time: Apr 29 06:08:11 2025  
 Quant Method : Z:\pestpcbsrv\HPCHEM1\ECD\_0\methods\P0041025.M  
 Quant Title : GC EXTRACTABLES  
 QLast Update : Fri Apr 11 02:12:41 2025  
 Response via : Initial Calibration  
 Integrator: ChemStation

Volume Inj. : 2 µl  
 Signal #1 Phase : ZB-MR1 Signal #2 Phase: ZB-MR2  
 Signal #1 Info : 30Mx0.32mmx 0.50µ Signal #2 Info : 30M x 0.32mm x 0.25µm

Compound	RT#1	RT#2	Resp#1	Resp#2	ng/ml	ng/ml
-----						
System Monitoring Compounds						
1) SA Tetrachlo...	3.686	3.682	31315438	16664205	3.579	3.340
2) SA Decachlor...	8.725	8.677	24486004	6912291	3.101	3.591
Target Compounds						
21) L5 AR-1248-1	4.775	4.762	53858889	27514349	253.053	238.981
22) L5 AR-1248-2	5.014	4.999	67340424	37154136	227.559	228.104
23) L5 AR-1248-3	5.228	5.040	105.4E6	49291444	285.023m	280.294
24) L5 AR-1248-4	5.582	5.210	207.8E6	53041860	399.648	260.419m#
25) L5 AR-1248-5	5.637	5.616	374.5E6	179.7E6	1013.833	910.294
26) L6 AR-1254-1	5.582	5.561	181.5E6	99839031	325.335m	331.142
27) L6 AR-1254-2	5.731	5.709	126.1E6	60118762	259.653m	227.133
28) L6 AR-1254-3	6.136	6.111	196.4E6	102.0E6	250.789m	252.870
29) L6 AR-1254-4	6.365	6.339	96609712	43502611	198.131m	189.378
30) L6 AR-1254-5	6.785	6.755	187.9E6	80891242	268.118	243.434
-----						

(f)=RT Delta > 1/2 Window (#)=Amounts differ by > 25% (m)=manual int.

Data Path : Z:\pestpcbsrv\HPCHEM1\ECD\_O\Data\PO042825\  
 Data File : PO110827.D  
 Signal(s) : Signal #1: ECD1A.ch Signal #2: ECD2B.ch  
 Acq On : 29 Apr 2025 00:31  
 Operator : YP/AJ  
 Sample : Q1860-23DL 5X  
 Misc :  
 ALS Vial : 36 Sample Multiplier: 1

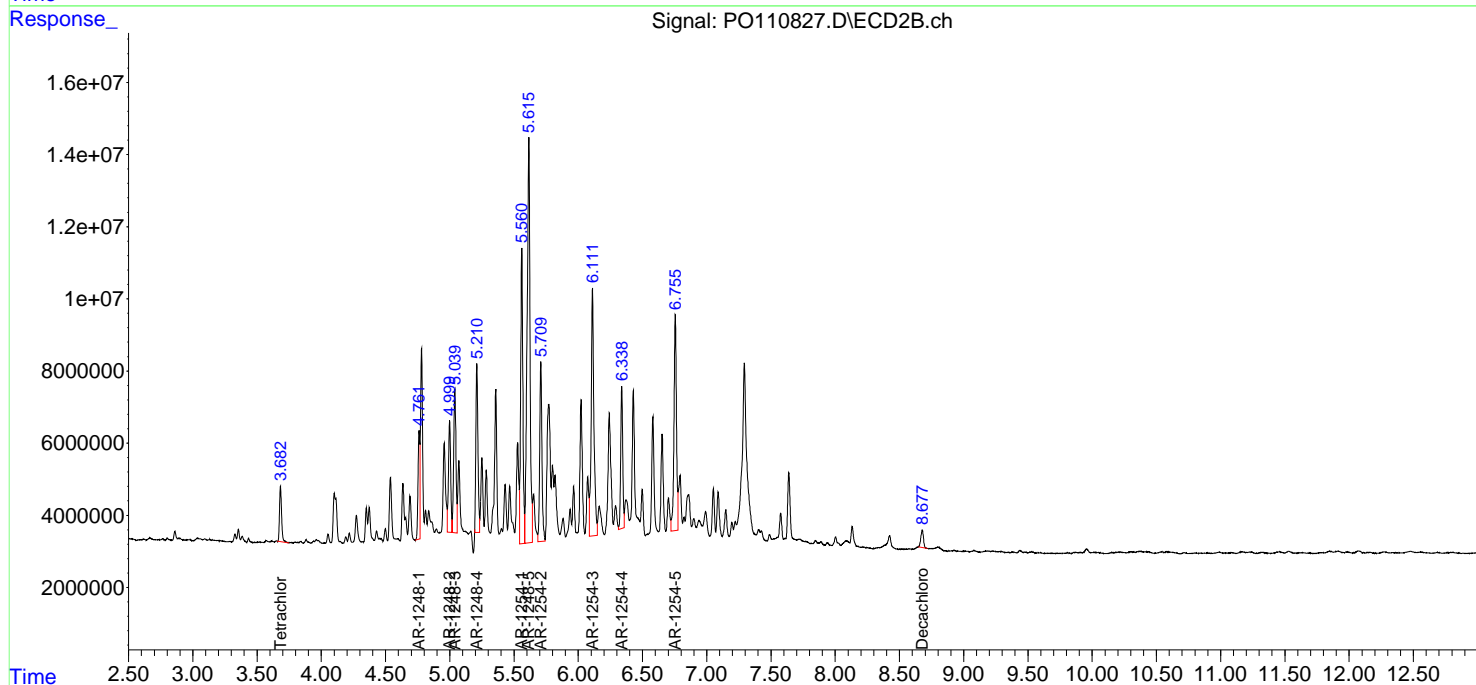
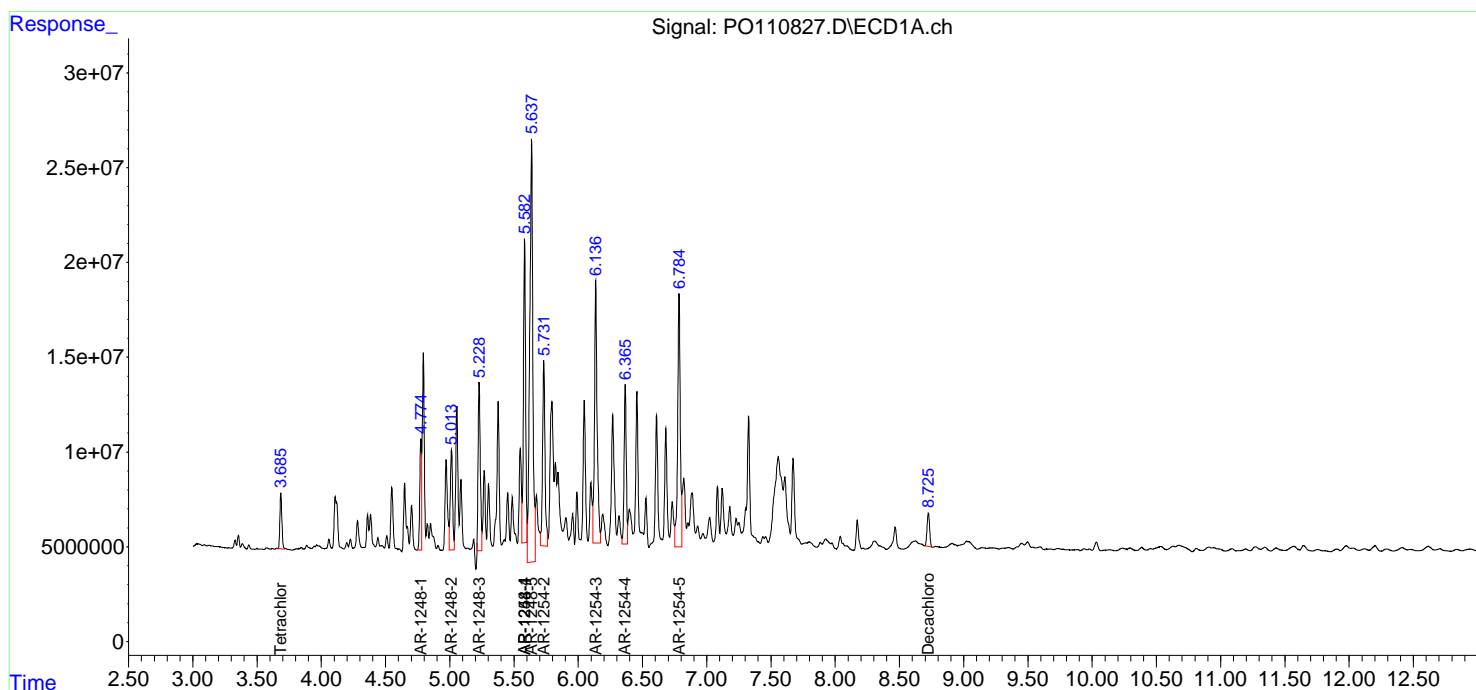
Instrument :  
 ECD\_O  
 ClientSampleId :  
 P001-SS017-02DL

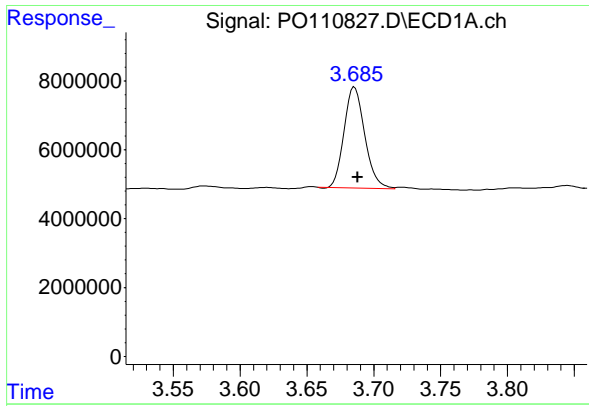
Manual Integrations  
 APPROVED

Reviewed By :Yogesh Patel 04/29/2025  
 Supervised By :mohammad ahmed 05/02/2025

Integration File signal 1: autoint1.e  
 Integration File signal 2: autoint2.e  
 Quant Time: Apr 29 06:08:11 2025  
 Quant Method : Z:\pestpcbsrv\HPCHEM1\ECD\_O\methods\PO041025.M  
 Quant Title : GC EXTRACTABLES  
 QLast Update : Fri Apr 11 02:12:41 2025  
 Response via : Initial Calibration  
 Integrator: ChemStation

Volume Inj. : 2 µl  
 Signal #1 Phase : ZB-MR1 Signal #2 Phase: ZB-MR2  
 Signal #1 Info : 30Mx0.32mmx 0.50µm Signal #2 Info : 30M x 0.32mm x 0.25µm





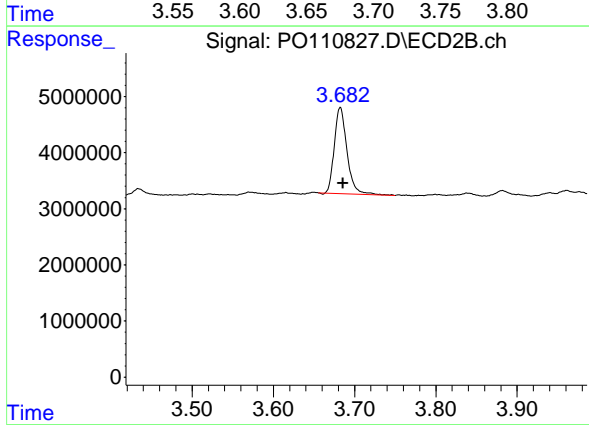
#1 Tetrachloro-m-xylene

R.T.: 3.686 min  
 Delta R.T.: -0.002 min  
 Response: 31315438  
 Conc: 3.58 ng/ml

Instrument :  
 ECD\_O  
 ClientSampleId :  
 P001-SS017-02DL

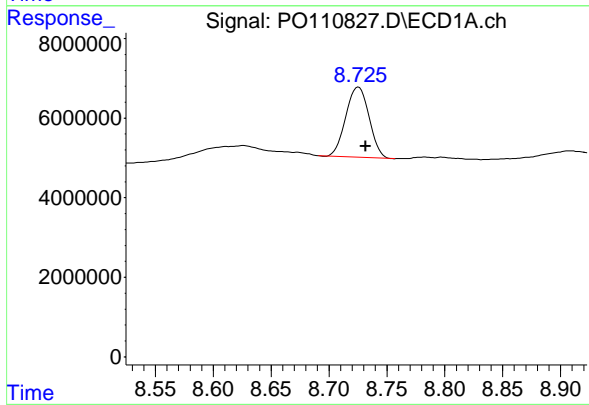
Manual Integrations  
 APPROVED

Reviewed By :Yogesh Patel 04/29/2025  
 Supervised By :mohammad ahmed 05/02/2025



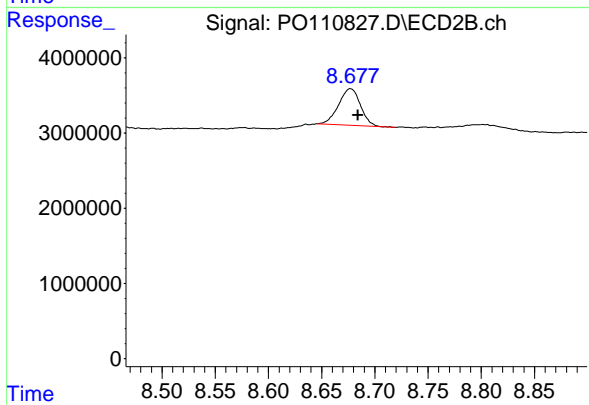
#1 Tetrachloro-m-xylene

R.T.: 3.682 min  
 Delta R.T.: -0.003 min  
 Response: 16664205  
 Conc: 3.34 ng/ml



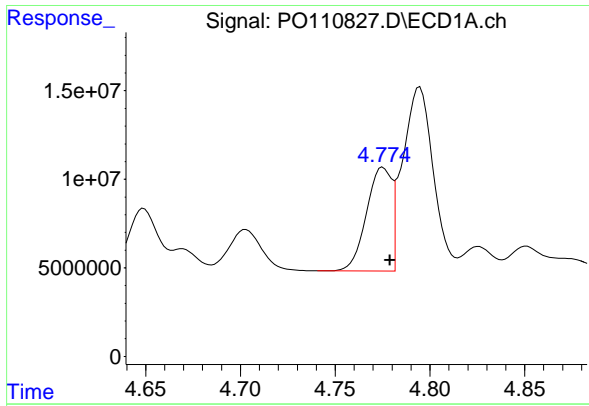
#2 Decachlorobiphenyl

R.T.: 8.725 min  
 Delta R.T.: -0.006 min  
 Response: 24486004  
 Conc: 3.10 ng/ml



#2 Decachlorobiphenyl

R.T.: 8.677 min  
 Delta R.T.: -0.007 min  
 Response: 6912291  
 Conc: 3.59 ng/ml



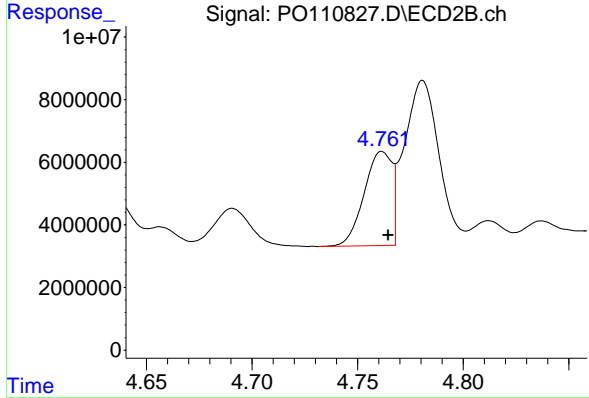
#21 AR-1248-1

R.T.: 4.775 min  
 Delta R.T.: -0.004 min  
 Response: 53858889  
 Conc: 253.05 ng/ml

Instrument :  
 ECD\_O  
 ClientSampleId :  
 P001-SS017-02DL

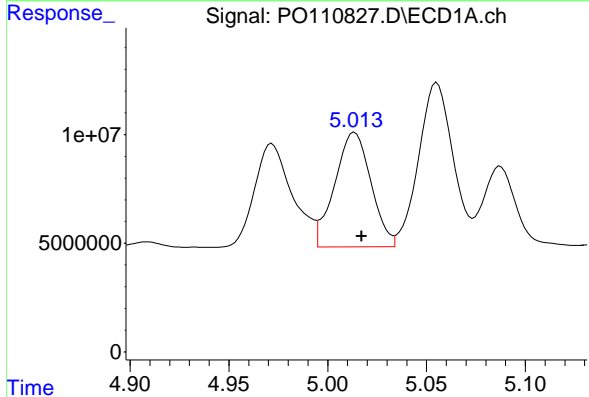
Manual Integrations  
 APPROVED

Reviewed By :Yogesh Patel 04/29/2025  
 Supervised By :mohammad ahmed 05/02/2025



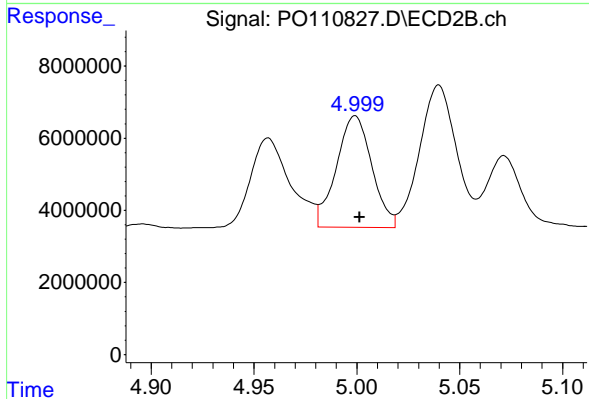
#21 AR-1248-1

R.T.: 4.762 min  
 Delta R.T.: -0.003 min  
 Response: 27514349  
 Conc: 238.98 ng/ml



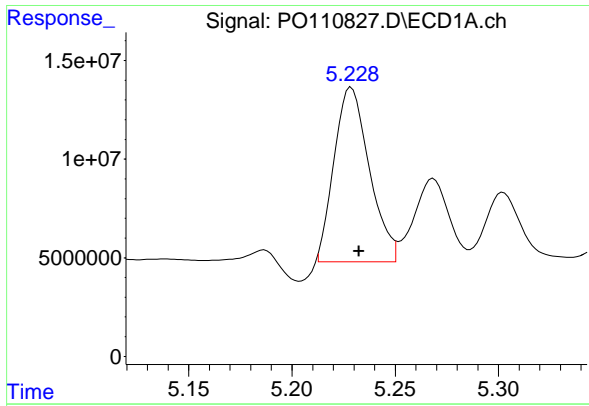
#22 AR-1248-2

R.T.: 5.014 min  
 Delta R.T.: -0.004 min  
 Response: 67340424  
 Conc: 227.56 ng/ml



#22 AR-1248-2

R.T.: 4.999 min  
 Delta R.T.: -0.002 min  
 Response: 37154136  
 Conc: 228.10 ng/ml



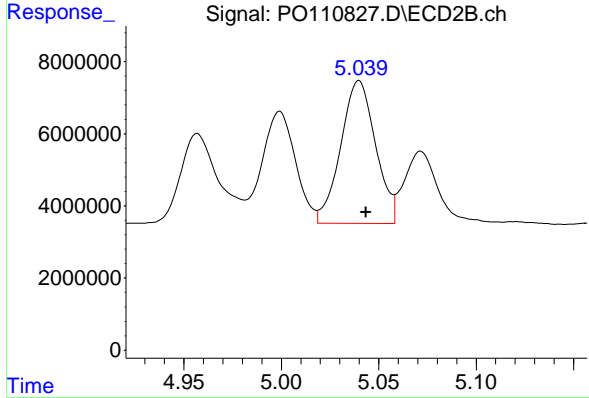
#23 AR-1248-3

R.T.: 5.228 min  
 Delta R.T.: -0.005 min  
 Response: 105447418  
 Conc: 285.02 ng/ml

Instrument :  
 ECD\_O  
 ClientSampleId :  
 P001-SS017-02DL

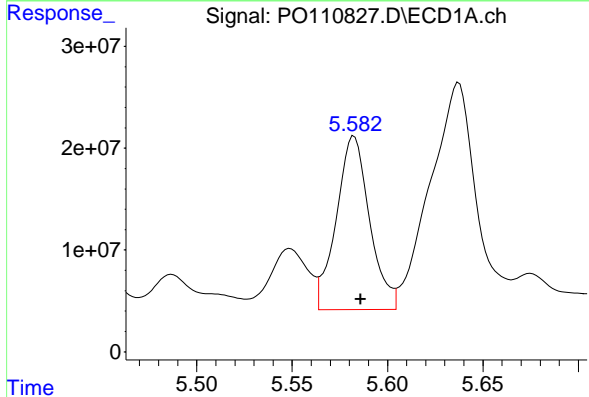
Manual Integrations  
 APPROVED

Reviewed By :Yogesh Patel 04/29/2025  
 Supervised By :mohammad ahmed 05/02/2025



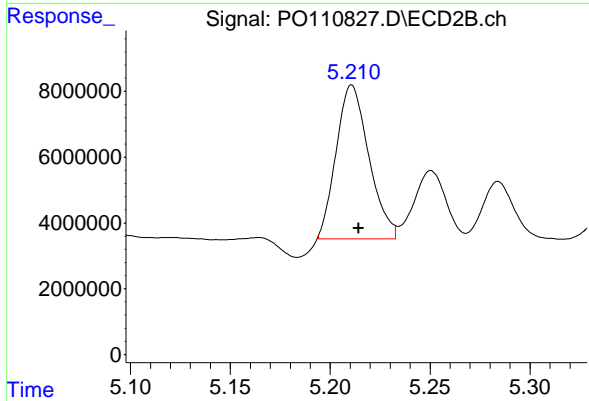
#23 AR-1248-3

R.T.: 5.040 min  
 Delta R.T.: -0.004 min  
 Response: 49291444  
 Conc: 280.29 ng/ml



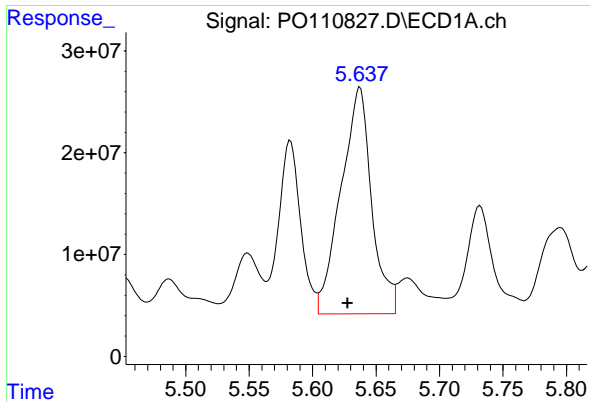
#24 AR-1248-4

R.T.: 5.582 min  
 Delta R.T.: -0.003 min  
 Response: 207829061  
 Conc: 399.65 ng/ml



#24 AR-1248-4

R.T.: 5.210 min  
 Delta R.T.: -0.004 min  
 Response: 53041860  
 Conc: 260.42 ng/ml m



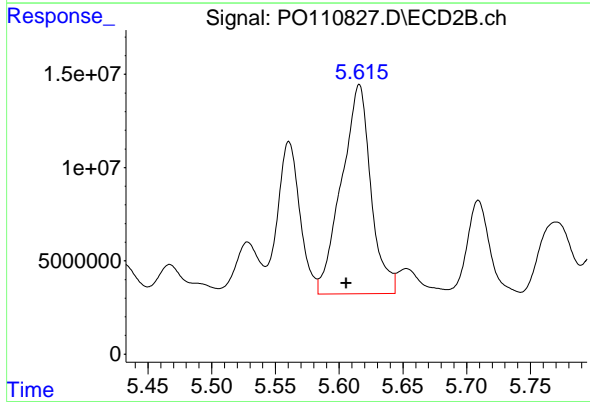
#25 AR-1248-5

R.T.: 5.637 min  
 Delta R.T.: 0.010 min  
 Response: 374536026  
 Conc: 1013.83 ng/ml

Instrument :  
 ECD\_O  
 ClientSampleId :  
 P001-SS017-02DL

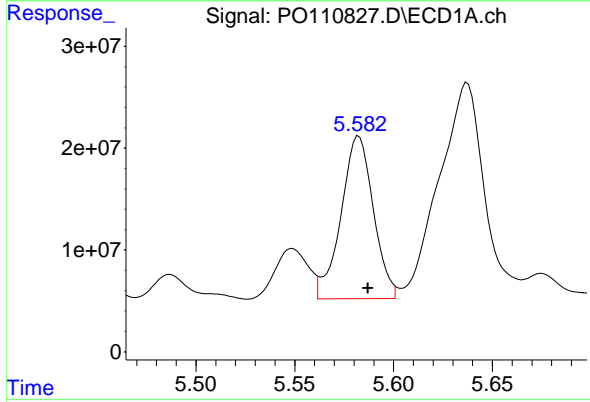
Manual Integrations  
 APPROVED

Reviewed By :Yogesh Patel 04/29/2025  
 Supervised By :mohammad ahmed 05/02/2025



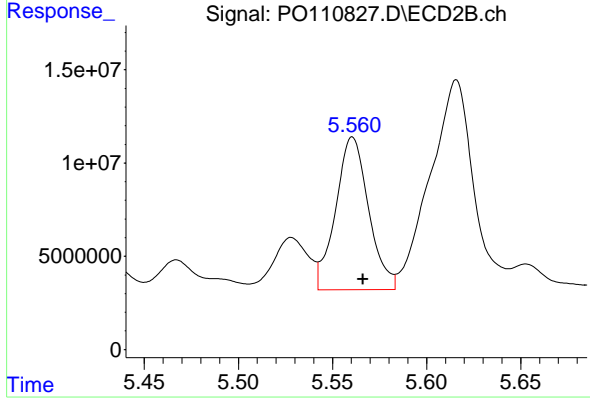
#25 AR-1248-5

R.T.: 5.616 min  
 Delta R.T.: 0.010 min  
 Response: 179688215  
 Conc: 910.29 ng/ml



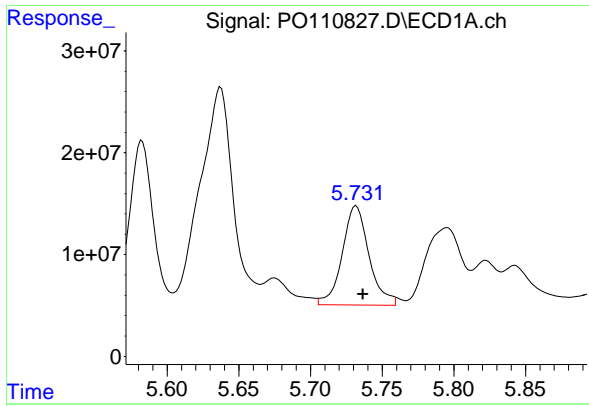
#26 AR-1254-1

R.T.: 5.582 min  
 Delta R.T.: -0.005 min  
 Response: 181533562  
 Conc: 325.34 ng/ml m



#26 AR-1254-1

R.T.: 5.561 min  
 Delta R.T.: -0.006 min  
 Response: 99839031  
 Conc: 331.14 ng/ml



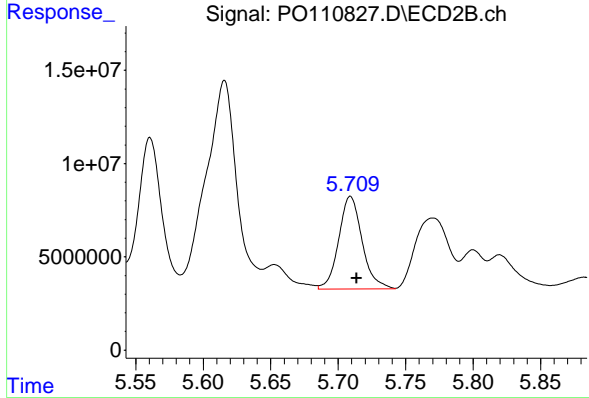
#27 AR-1254-2

R.T.: 5.731 min  
 Delta R.T.: -0.005 min  
 Response: 126113984  
 Conc: 259.65 ng/ml

Instrument :  
 ECD\_O  
 ClientSampleId :  
 P001-SS017-02DL

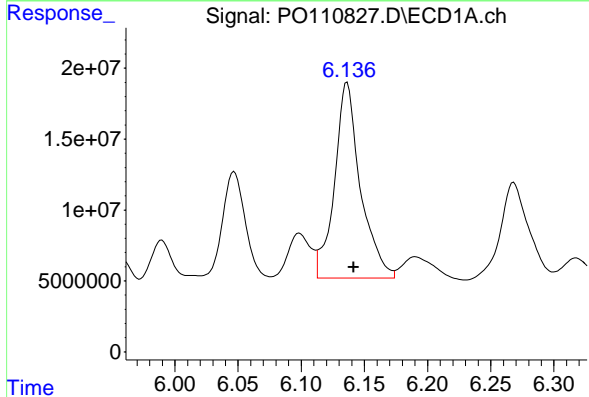
Manual Integrations  
 APPROVED

Reviewed By :Yogesh Patel 04/29/2025  
 Supervised By :mohammad ahmed 05/02/2025



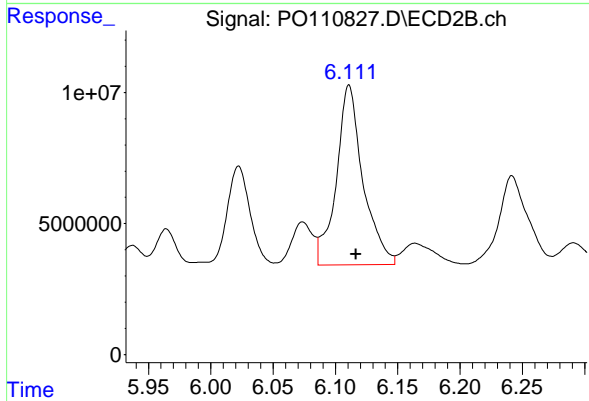
#27 AR-1254-2

R.T.: 5.709 min  
 Delta R.T.: -0.004 min  
 Response: 60118762  
 Conc: 227.13 ng/ml



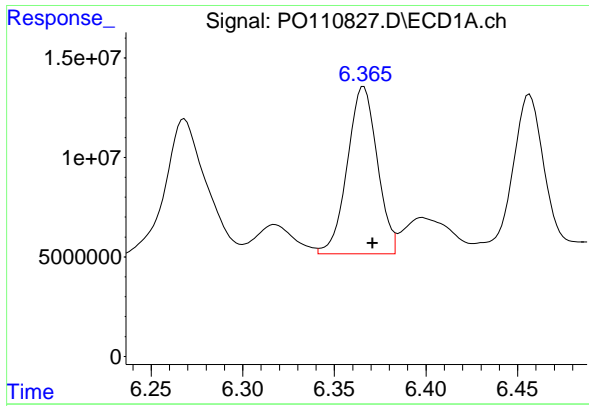
#28 AR-1254-3

R.T.: 6.136 min  
 Delta R.T.: -0.006 min  
 Response: 196423254  
 Conc: 250.79 ng/ml m



#28 AR-1254-3

R.T.: 6.111 min  
 Delta R.T.: -0.006 min  
 Response: 102011875  
 Conc: 252.87 ng/ml



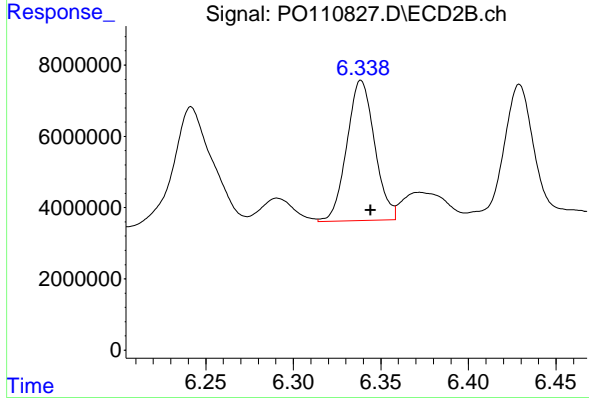
#29 AR-1254-4

R.T.: 6.365 min  
 Delta R.T.: -0.006 min  
 Response: 96609712  
 Conc: 198.13 ng/ml

Instrument :  
 ECD\_O  
 ClientSampleId :  
 P001-SS017-02DL

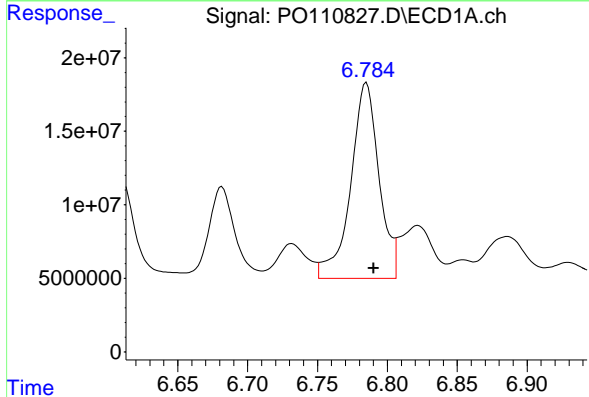
Manual Integrations  
 APPROVED

Reviewed By :Yogesh Patel 04/29/2025  
 Supervised By :mohammad ahmed 05/02/2025



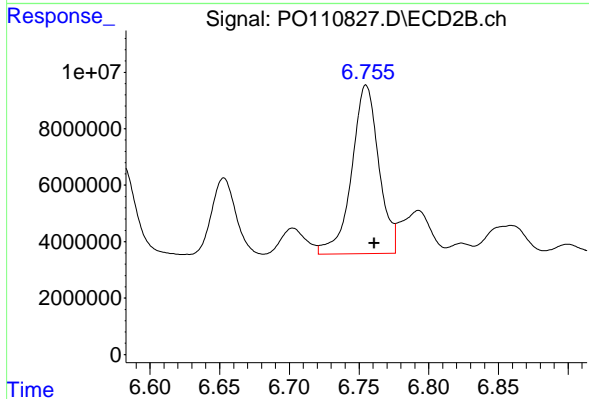
#29 AR-1254-4

R.T.: 6.339 min  
 Delta R.T.: -0.005 min  
 Response: 43502611  
 Conc: 189.38 ng/ml



#30 AR-1254-5

R.T.: 6.785 min  
 Delta R.T.: -0.005 min  
 Response: 187923661  
 Conc: 268.12 ng/ml



#30 AR-1254-5

R.T.: 6.755 min  
 Delta R.T.: -0.006 min  
 Response: 80891242  
 Conc: 243.43 ng/ml