

Data Path : Z:\pestpcbsrv\HPCHEM1\ECD\_L\Data\PL052125\  
 Data File : PL095751.D  
 Signal(s) : Signal #1: ECD1A.ch Signal #2: ECD2B.ch  
 Acq On : 21 May 2025 15:12  
 Operator : AR\AJ  
 Sample : PCHLORICV500  
 Misc :  
 ALS Vial : 21 Sample Multiplier: 1

Instrument :  
 ECD\_L  
 ClientSampleId :  
 ICVPL052125CHLOR

Integration File signal 1: autoint1.e  
 Integration File signal 2: autoint2.e  
 Quant Time: May 22 05:59:47 2025  
 Quant Method : Z:\pestpcbsrv\HPCHEM1\ECD\_L\methods\PL052125.M  
 Quant Title : GC Extractables  
 QLast Update : Thu May 22 05:59:09 2025  
 Response via : Initial Calibration  
 Integrator: ChemStation

Volume Inj. : 1 µl  
 Signal #1 Phase : ZB-MR1 Signal #2 Phase: ZB-MR2  
 Signal #1 Info : 30M x 0.32mm x0.5 Signal #2 Info : 30M x 0.32mm x0.25µm

Compound	RT#1	RT#2	Resp#1	Resp#2	ng/ml	ng/ml
-----						
System Monitoring Compounds						
1) SA Tetrachlo...	3.573	2.885	156.9E6	252.7E6	50.100	49.840
28) SA Decachlor...	9.104	8.064	115.9E6	229.0E6	50.010	51.351
Target Compounds						
23) Chlordane-1	4.740	3.906	88597152	96171041	497.300	493.232
24) Chlordane-2	5.268	4.488	96121246	109.3E6	500.182	490.592
25) Chlordane-3	5.974	5.124	377.3E6	331.4E6	510.592	502.970
26) Chlordane-4	6.059	5.187	457.2E6	287.0E6	508.677	502.673
27) Chlordane-5	6.900	6.082	69143587	126.8E6	504.904	497.202
-----						

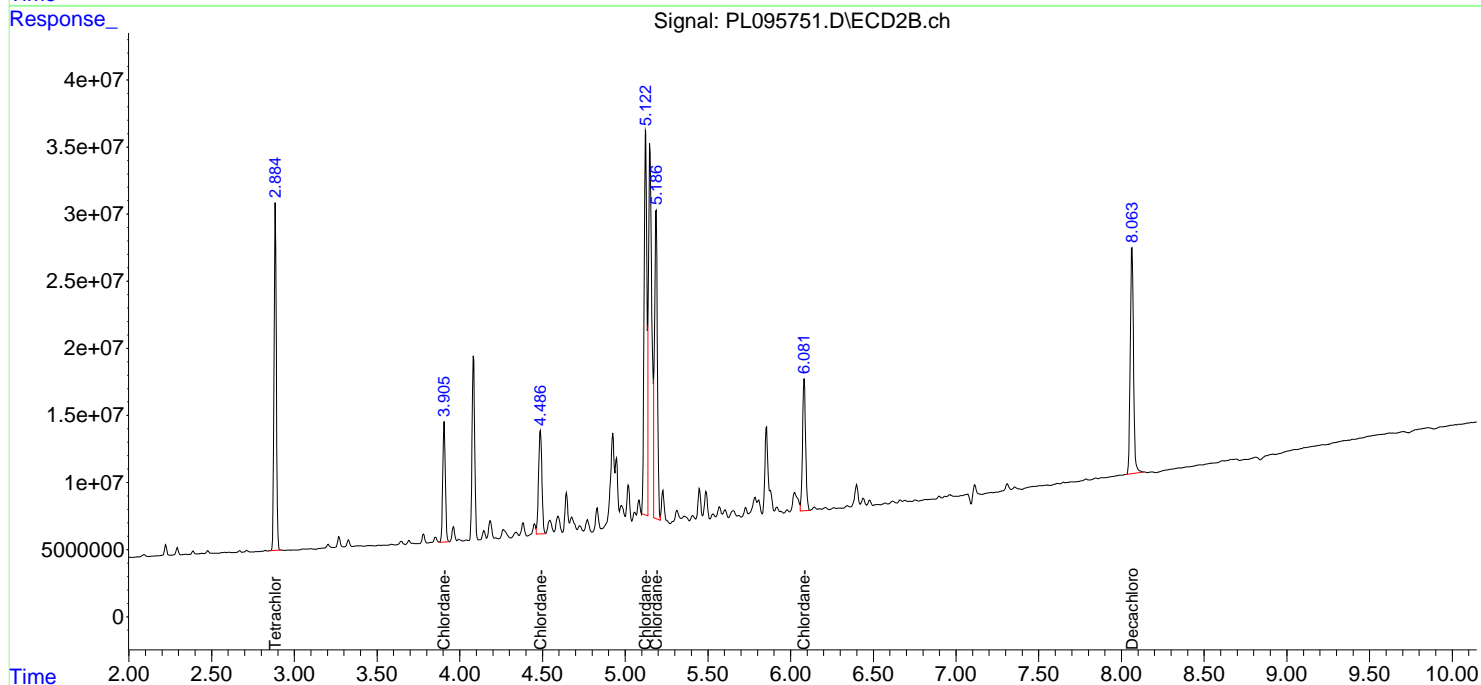
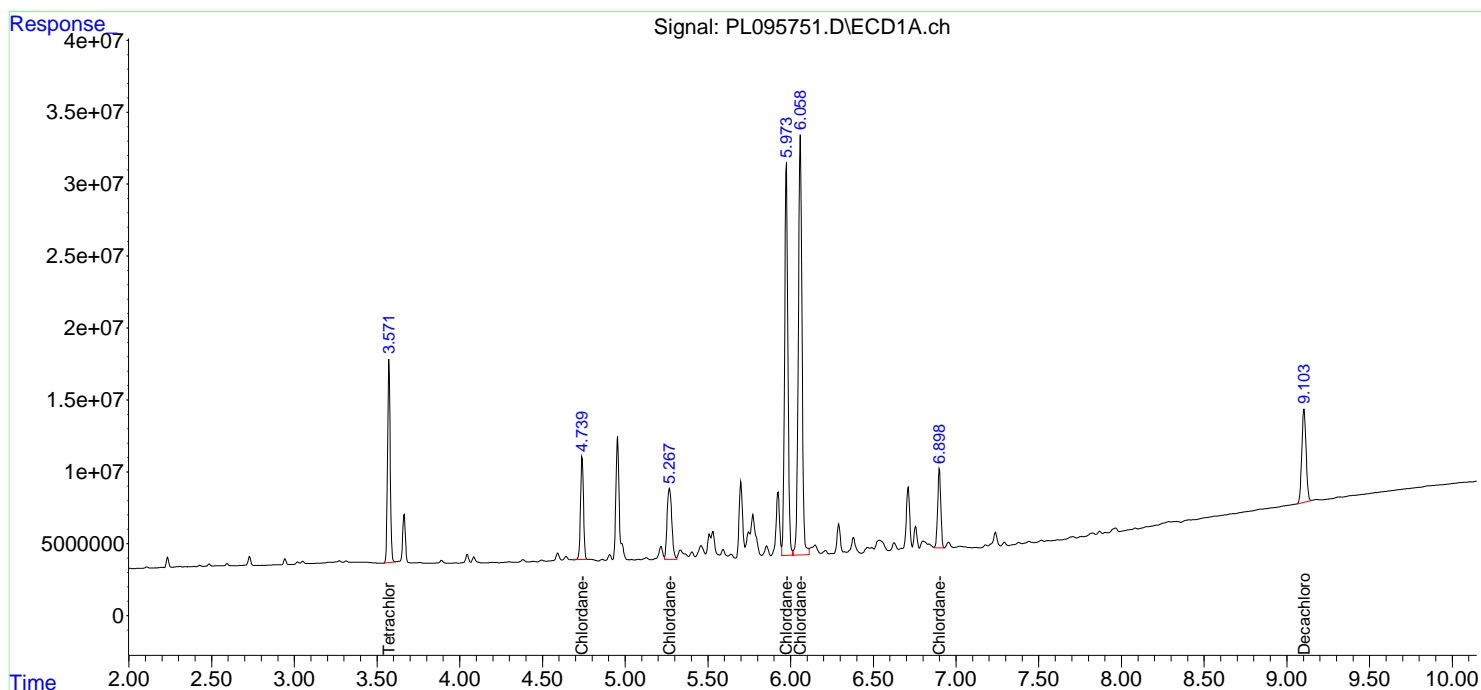
(f)=RT Delta > 1/2 Window (#)=Amounts differ by > 25% (m)=manual int.

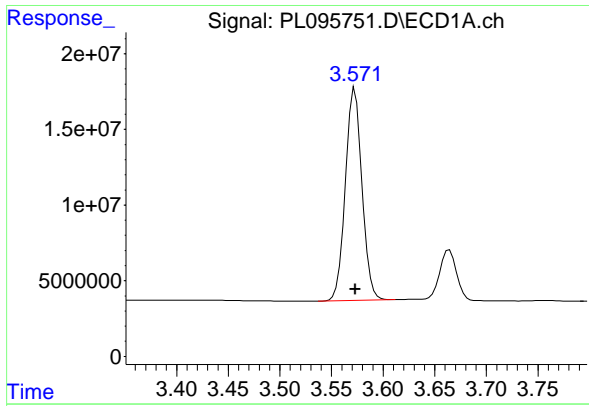
Data Path : Z:\pestpcbsrv\HPCHEM1\ECD\_L\Data\PL052125\  
 Data File : PL095751.D  
 Signal(s) : Signal #1: ECD1A.ch Signal #2: ECD2B.ch  
 Acq On : 21 May 2025 15:12  
 Operator : AR\AJ  
 Sample : PCHLORICV500  
 Misc :  
 ALS Vial : 21 Sample Multiplier: 1

Instrument :  
 ECD\_L  
 ClientSampleId :  
 ICVPL052125CHLOR

Integration File signal 1: autoint1.e  
 Integration File signal 2: autoint2.e  
 Quant Time: May 22 05:59:47 2025  
 Quant Method : Z:\pestpcbsrv\HPCHEM1\ECD\_L\methods\PL052125.M  
 Quant Title : GC Extractables  
 QLast Update : Thu May 22 05:59:09 2025  
 Response via : Initial Calibration  
 Integrator: ChemStation

Volume Inj. : 1 µl  
 Signal #1 Phase : ZB-MR1 Signal #2 Phase: ZB-MR2  
 Signal #1 Info : 30M x 0.32mm x0.5 Signal #2 Info : 30M x 0.32mm x0.25µm

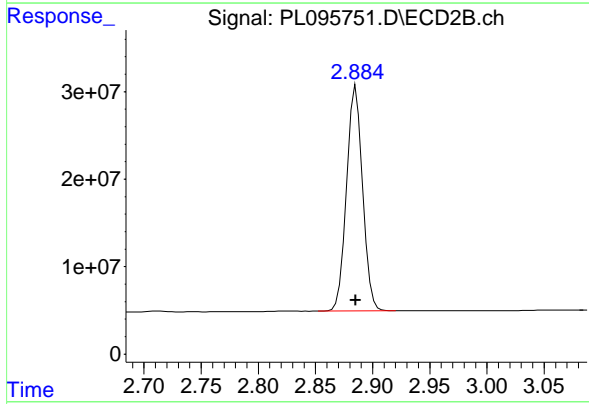




#1 Tetrachloro-m-xylene

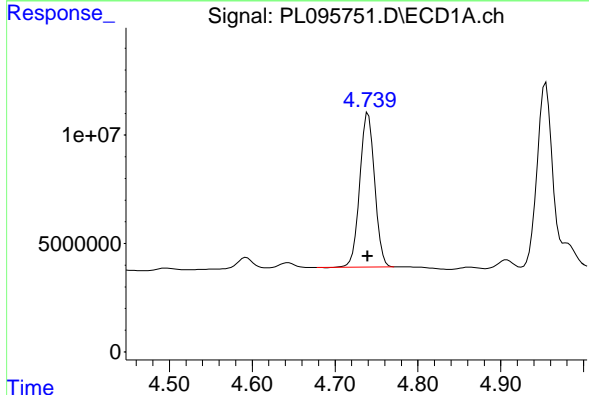
R.T.: 3.573 min  
 Delta R.T.: 0.000 min  
 Response: 156911848  
 Conc: 50.10 ng/ml

Instrument :  
 ECD\_L  
 ClientSampleId :  
 ICVPL052125CHLOR



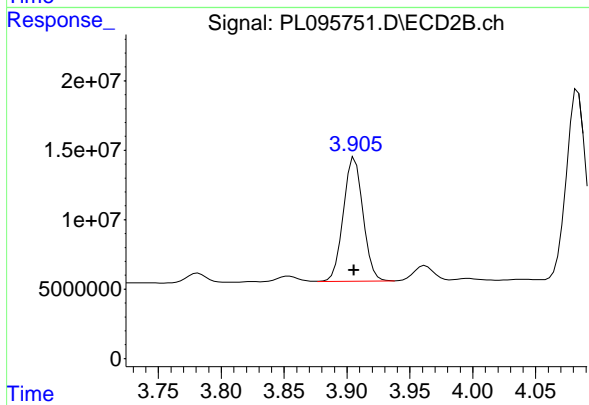
#1 Tetrachloro-m-xylene

R.T.: 2.885 min  
 Delta R.T.: 0.000 min  
 Response: 252709314  
 Conc: 49.84 ng/ml



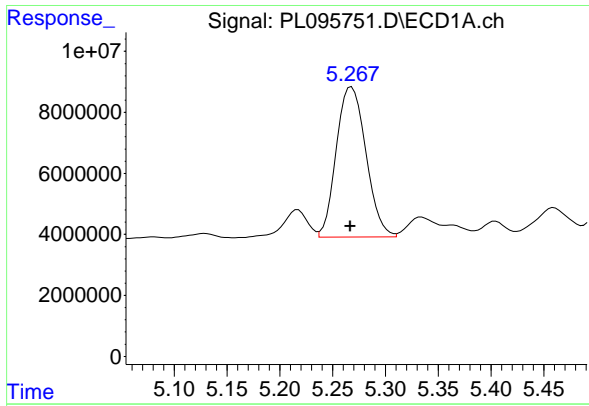
#23 Chlordane-1

R.T.: 4.740 min  
 Delta R.T.: 0.000 min  
 Response: 88597152  
 Conc: 497.30 ng/ml



#23 Chlordane-1

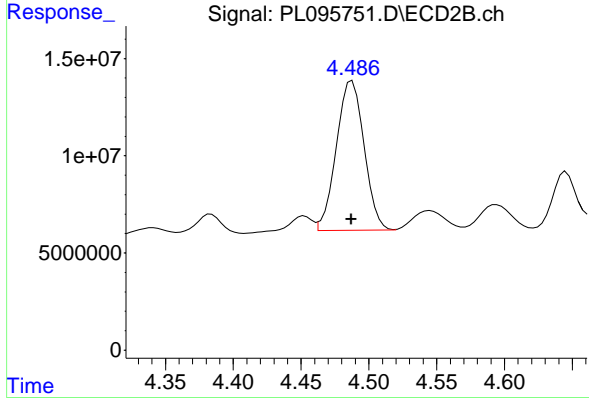
R.T.: 3.906 min  
 Delta R.T.: 0.000 min  
 Response: 96171041  
 Conc: 493.23 ng/ml



#24 Chlordane-2

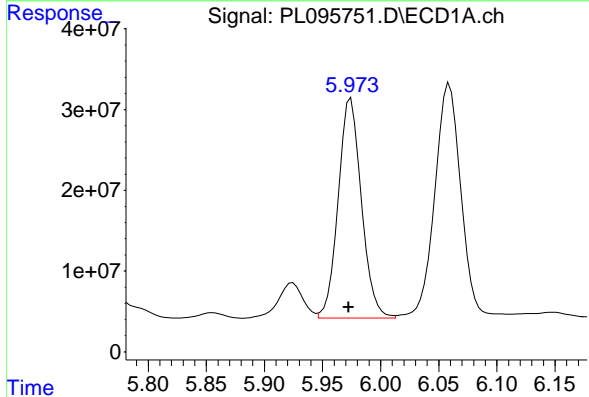
R.T.: 5.268 min  
 Delta R.T.: 0.001 min  
 Response: 96121246  
 Conc: 500.18 ng/ml

Instrument :  
 ECD\_L  
 ClientSampleId :  
 ICVPL052125CHLOR



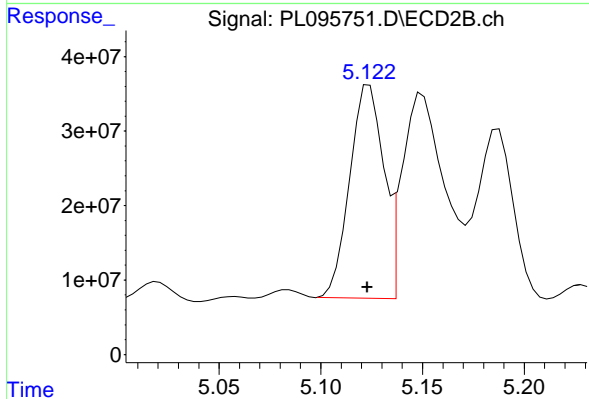
#24 Chlordane-2

R.T.: 4.488 min  
 Delta R.T.: 0.000 min  
 Response: 109280725  
 Conc: 490.59 ng/ml



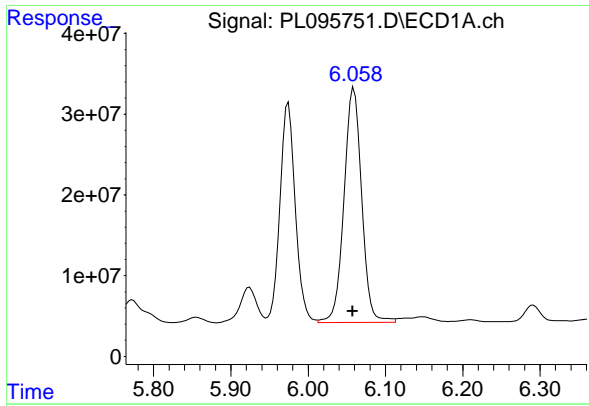
#25 Chlordane-3

R.T.: 5.974 min  
 Delta R.T.: 0.002 min  
 Response: 377342003  
 Conc: 510.59 ng/ml



#25 Chlordane-3

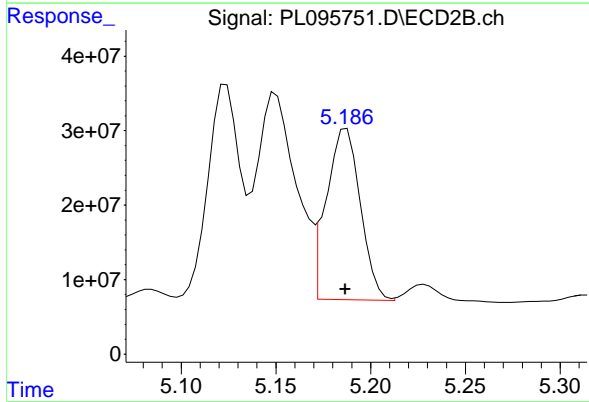
R.T.: 5.124 min  
 Delta R.T.: 0.000 min  
 Response: 331408650  
 Conc: 502.97 ng/ml



#26 Chlordane-4

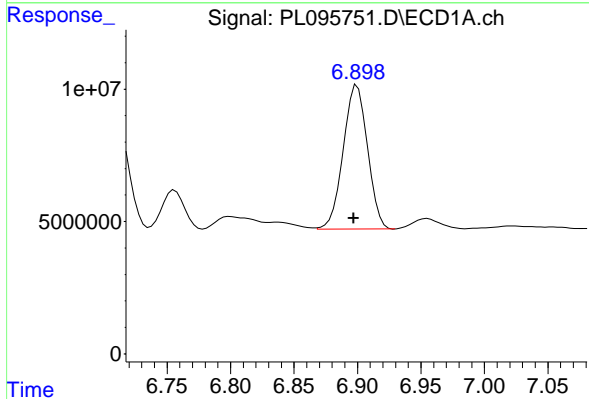
R.T.: 6.059 min  
 Delta R.T.: 0.002 min  
 Response: 457193182  
 Conc: 508.68 ng/ml

Instrument :  
 ECD\_L  
 ClientSampleId :  
 ICVPL052125CHLOR



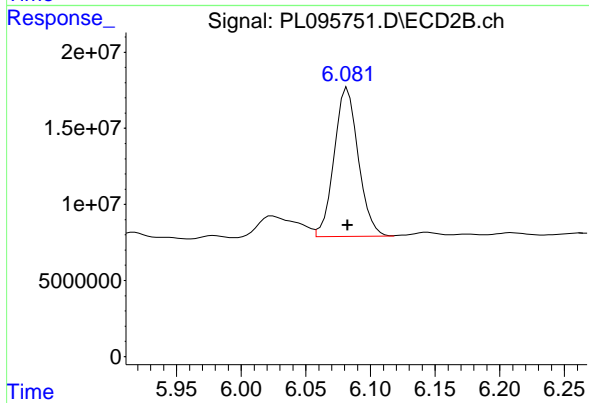
#26 Chlordane-4

R.T.: 5.187 min  
 Delta R.T.: 0.000 min  
 Response: 286980441  
 Conc: 502.67 ng/ml



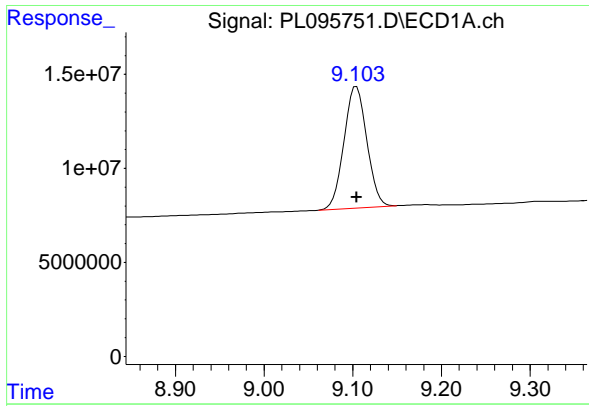
#27 Chlordane-5

R.T.: 6.900 min  
 Delta R.T.: 0.003 min  
 Response: 69143587  
 Conc: 504.90 ng/ml



#27 Chlordane-5

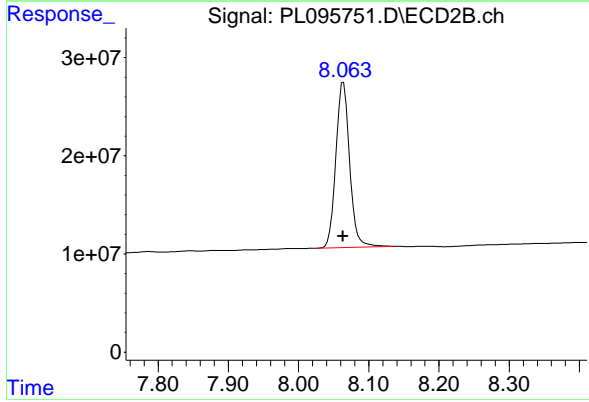
R.T.: 6.082 min  
 Delta R.T.: 0.000 min  
 Response: 126753637  
 Conc: 497.20 ng/ml



#28 Decachlorobiphenyl

R.T.: 9.104 min  
Delta R.T.: 0.000 min  
Response: 115945743  
Conc: 50.01 ng/ml

Instrument :  
ECD\_L  
ClientSampleId :  
ICVPL052125CHLOR



#28 Decachlorobiphenyl

R.T.: 8.064 min  
Delta R.T.: 0.000 min  
Response: 229025179  
Conc: 51.35 ng/ml