

Data Path : Z:\pestpcbsrv\HPCHEM1\ECD_L\Data\PL052125\
 Data File : PL095752.D
 Signal(s) : Signal #1: ECD1A.ch Signal #2: ECD2B.ch
 Acq On : 21 May 2025 15:26
 Operator : AR\AJ
 Sample : PTOXICV500
 Misc :
 ALS Vial : 22 Sample Multiplier: 1

Instrument :
 ECD_L
 ClientSampleId :
 ICVPL052125TOX

Integration File signal 1: autoint1.e
 Integration File signal 2: autoint2.e
 Quant Time: May 22 05:35:36 2025
 Quant Method : Z:\pestpcbsrv\HPCHEM1\ECD_L\methods\LTX052125.M
 Quant Title : GC Extractables
 QLast Update : Thu May 22 05:34:43 2025
 Response via : Initial Calibration
 Integrator: ChemStation

Volume Inj. : 2 µl
 Signal #1 Phase : Rtx-CLPesticide 1 Signal #2 Phase: Rtx-CLPesticide 1
 Signal #1 Info : 30M x 0.32mm x0.3 Signal #2 Info : 30M x 0.32mm x 0.25µm

Compound	RT#1	RT#2	Resp#1	Resp#2	ng/ml	ng/ml

System Monitoring Compounds						
1) SA Tetrachlo...	3.573	2.886	163.7E6	202.4E6	49.982	49.895
7) SA Decachlor...	9.104	8.064	124.0E6	247.6E6	50.372	51.064
Target Compounds						
2) Toxaphene-1	5.882	5.144	5739363	15408948	501.878	517.652
3) Toxaphene-2	6.271	5.832	14155370	17364106	513.663	497.470
4) Toxaphene-3	7.086	6.112	48247186	18382533	514.399	502.461
5) Toxaphene-4	7.177	6.748	33135236	58920327	505.295	500.417
6) Toxaphene-5	7.958	7.188	23485148	39543084	507.540	484.747

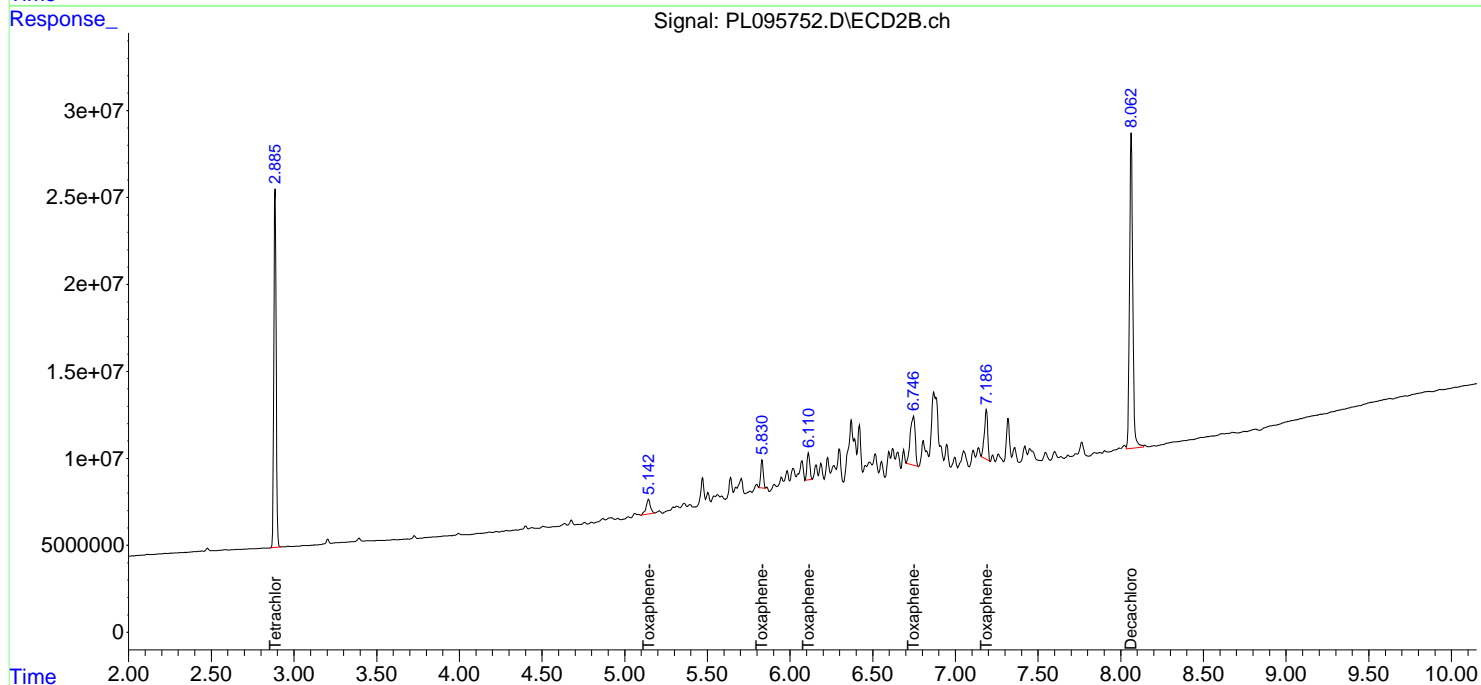
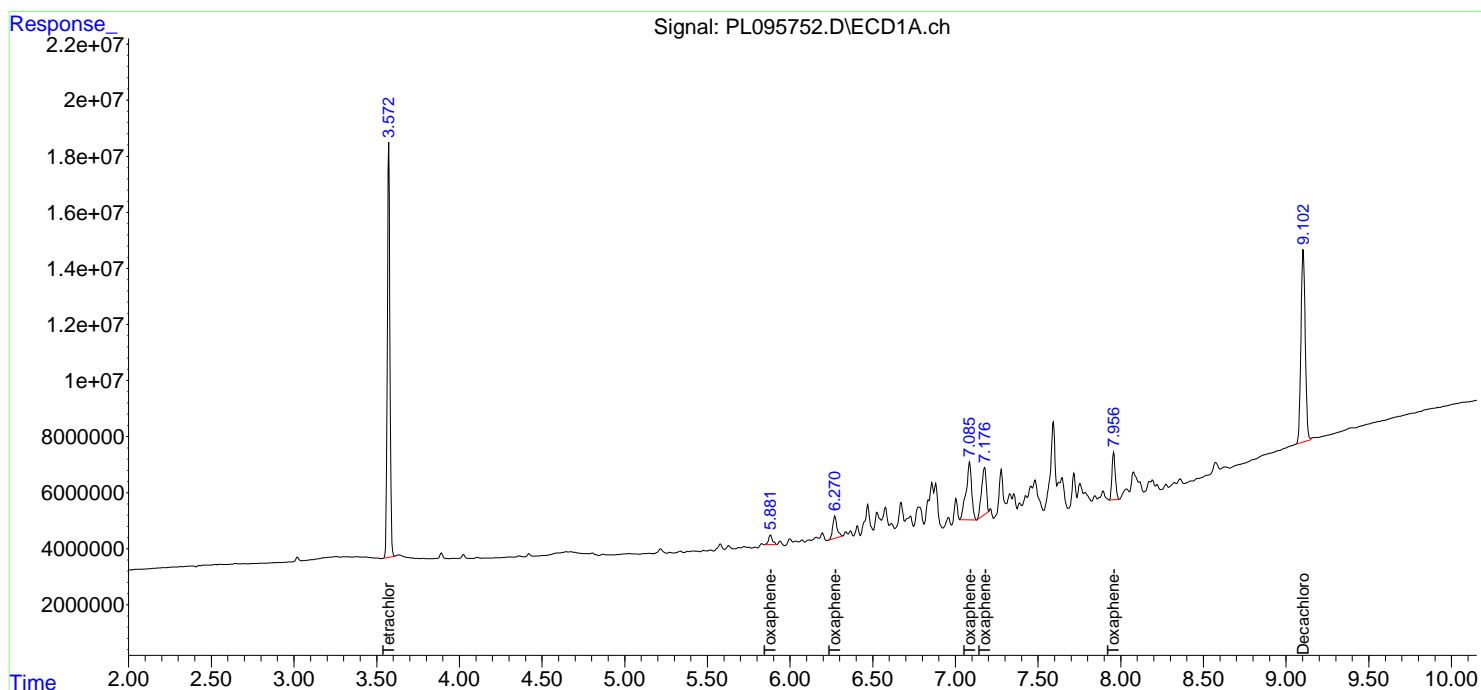
(f)=RT Delta > 1/2 Window (#)=Amounts differ by > 25% (m)=manual int.

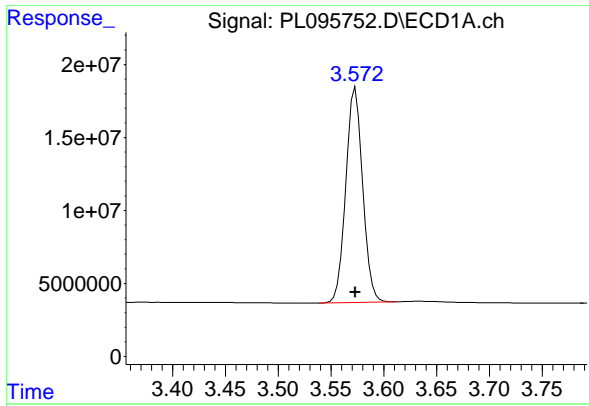
Data Path : Z:\pestpcbsrv\HPCHEM1\ECD_L\Data\PL052125\
 Data File : PL095752.D
 Signal(s) : Signal #1: ECD1A.ch Signal #2: ECD2B.ch
 Acq On : 21 May 2025 15:26
 Operator : AR\AJ
 Sample : PTOXICV500
 Misc :
 ALS Vial : 22 Sample Multiplier: 1

Instrument :
 ECD_L
 ClientSampleId :
 ICVPL052125TOX

Integration File signal 1: autoint1.e
 Integration File signal 2: autoint2.e
 Quant Time: May 22 05:35:36 2025
 Quant Method : Z:\pestpcbsrv\HPCHEM1\ECD_L\methods\LTX052125.M
 Quant Title : GC Extractables
 QLast Update : Thu May 22 05:34:43 2025
 Response via : Initial Calibration
 Integrator: ChemStation

Volume Inj. : 2 µl
 Signal #1 Phase : Rtx-CLPesticide 1 Signal #2 Phase: Rtx-CLPesticide 1
 Signal #1 Info : 30M x 0.32mm x 0.3 Signal #2 Info : 30M x 0.32mm x 0.25µm

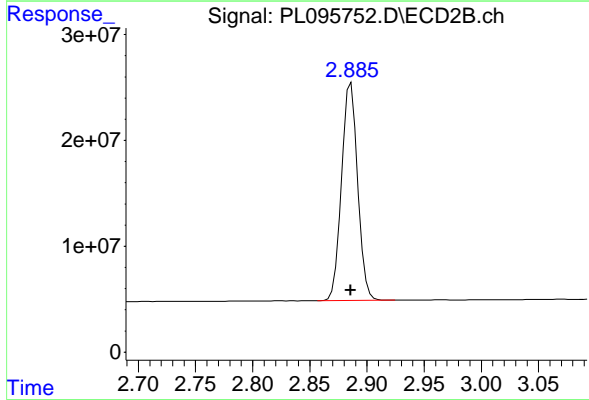




#1 Tetrachloro-m-xylene

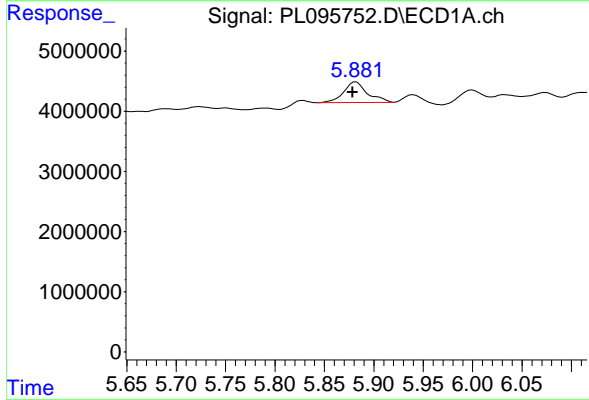
R.T.: 3.573 min
 Delta R.T.: 0.000 min
 Response: 163650406
 Conc: 49.98 ng/ml

Instrument :
 ECD_L
 ClientSampleId :
 ICVPL052125TOX



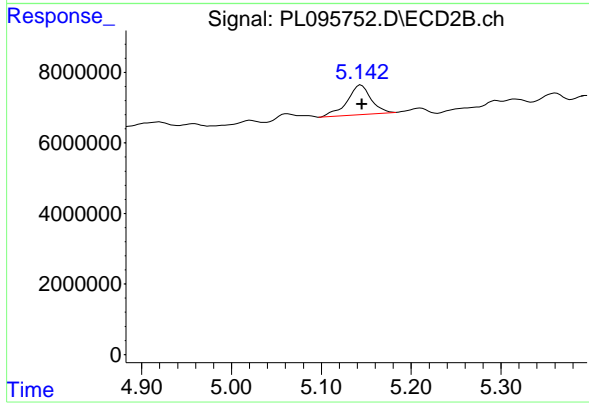
#1 Tetrachloro-m-xylene

R.T.: 2.886 min
 Delta R.T.: 0.000 min
 Response: 202377338
 Conc: 49.90 ng/ml



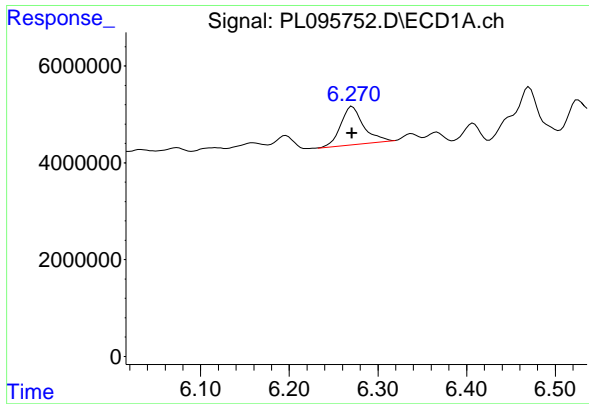
#2 Toxaphene-1

R.T.: 5.882 min
 Delta R.T.: 0.004 min
 Response: 5739363
 Conc: 501.88 ng/ml



#2 Toxaphene-1

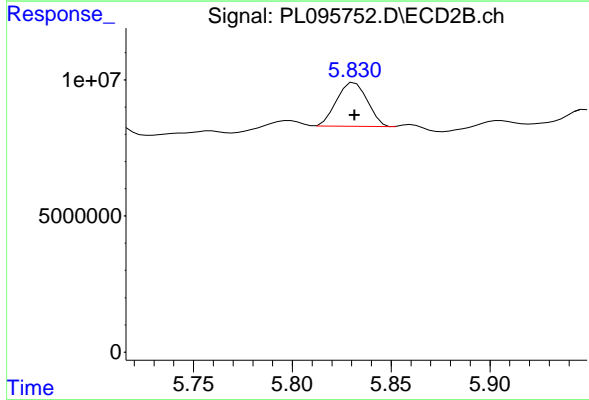
R.T.: 5.144 min
 Delta R.T.: 0.000 min
 Response: 15408948
 Conc: 517.65 ng/ml



#3 Toxaphene-2

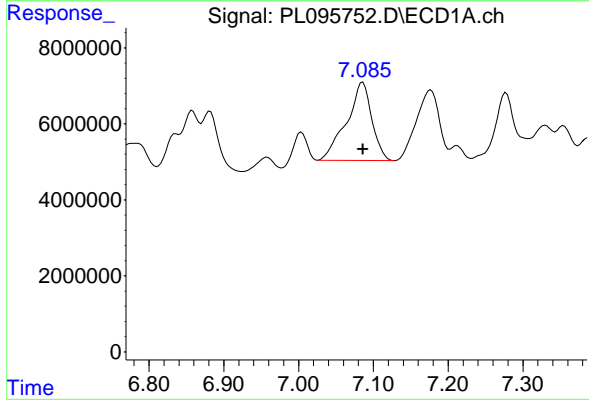
R.T.: 6.271 min
 Delta R.T.: 0.000 min
 Response: 14155370
 Conc: 513.66 ng/ml

Instrument :
 ECD_L
 ClientSampleId :
 ICVPL052125TOX



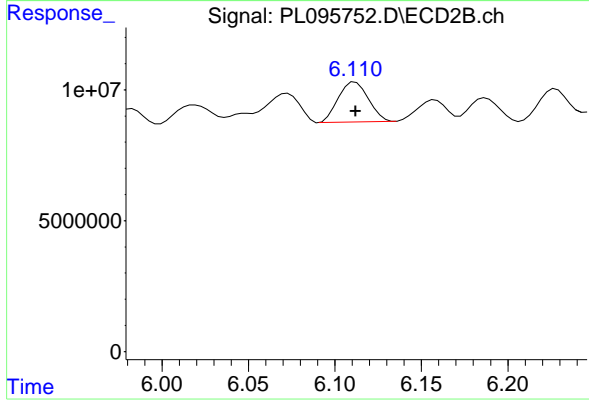
#3 Toxaphene-2

R.T.: 5.832 min
 Delta R.T.: 0.000 min
 Response: 17364106
 Conc: 497.47 ng/ml



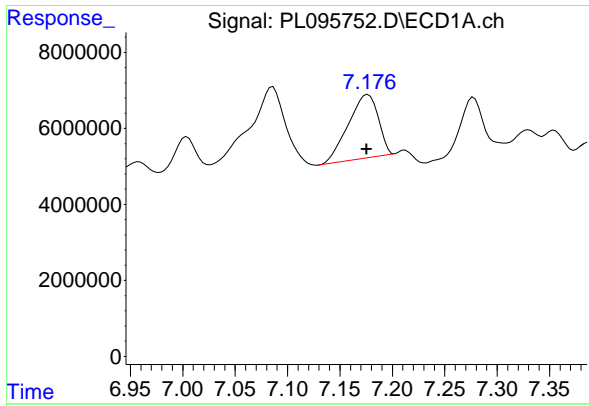
#4 Toxaphene-3

R.T.: 7.086 min
 Delta R.T.: 0.000 min
 Response: 48247186
 Conc: 514.40 ng/ml



#4 Toxaphene-3

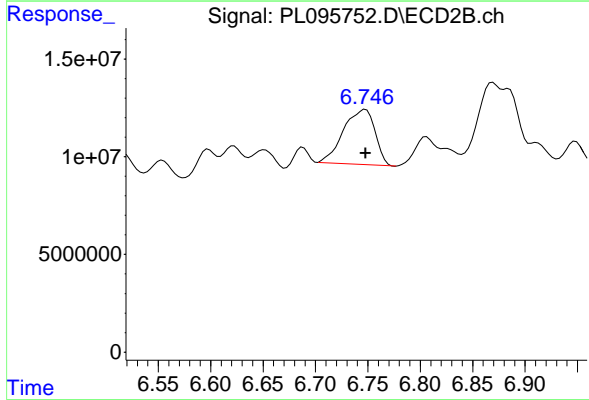
R.T.: 6.112 min
 Delta R.T.: 0.000 min
 Response: 18382533
 Conc: 502.46 ng/ml



#5 Toxaphene-4

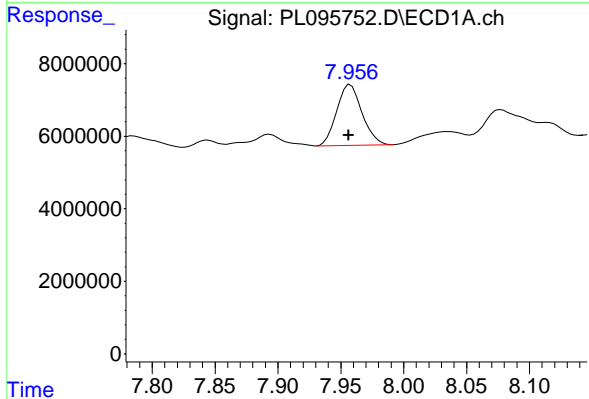
R.T.: 7.177 min
 Delta R.T.: 0.001 min
 Response: 33135236
 Conc: 505.29 ng/ml

Instrument :
 ECD_L
 ClientSampleId :
 ICVPL052125TOX



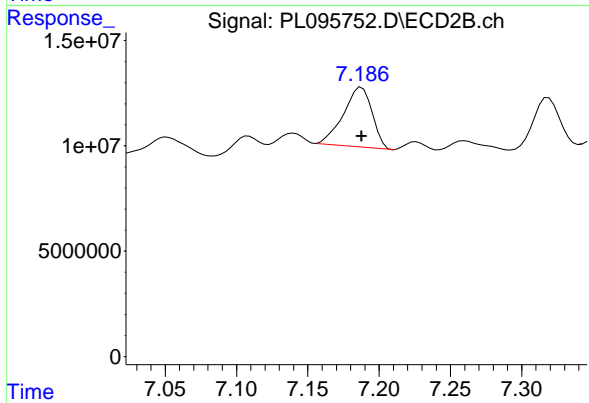
#5 Toxaphene-4

R.T.: 6.748 min
 Delta R.T.: 0.000 min
 Response: 58920327
 Conc: 500.42 ng/ml



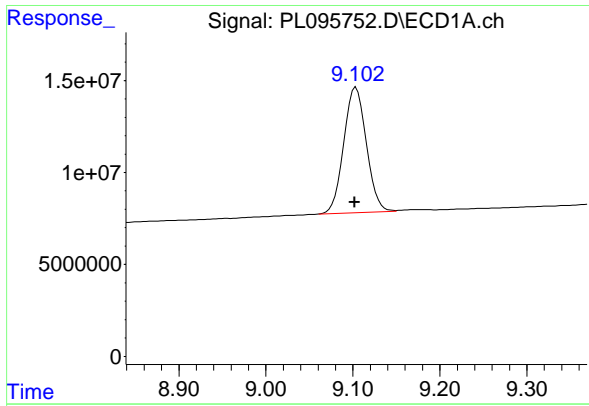
#6 Toxaphene-5

R.T.: 7.958 min
 Delta R.T.: 0.001 min
 Response: 23485148
 Conc: 507.54 ng/ml



#6 Toxaphene-5

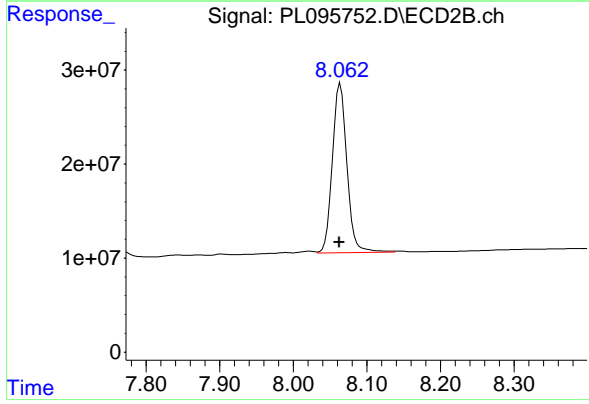
R.T.: 7.188 min
 Delta R.T.: 0.000 min
 Response: 39543084
 Conc: 484.75 ng/ml



#7 Decachlorobiphenyl

R.T.: 9.104 min
Delta R.T.: 0.002 min
Response: 123976903
Conc: 50.37 ng/ml

Instrument :
ECD_L
ClientSampleId :
ICVPL052125TOX



#7 Decachlorobiphenyl

R.T.: 8.064 min
Delta R.T.: 0.002 min
Response: 247597356
Conc: 51.06 ng/ml