

Data Path : Z:\pestpcbsrv\HPCHEM1\ECD_L\Data\PL052125\
 Data File : PL095740.D
 Signal(s) : Signal #1: ECD1A.ch Signal #2: ECD2B.ch
 Acq On : 21 May 2025 12:42
 Operator : AR\AJ
 Sample : PCHLORICC1000
 Misc :
 ALS Vial : 10 Sample Multiplier: 1

Instrument :
 ECD_L
 ClientSampleId :
 PCHLORICC1000

Integration File signal 1: autoint1.e
 Integration File signal 2: autoint2.e
 Quant Time: May 22 05:53:17 2025
 Quant Method : Z:\pestpcbsrv\HPCHEM1\ECD_L\methods\PL052125.M
 Quant Title : GC Extractables
 QLast Update : Thu May 22 05:52:46 2025
 Response via : Initial Calibration
 Integrator: ChemStation

Volume Inj. : 1 µl
 Signal #1 Phase : ZB-MR1 Signal #2 Phase: ZB-MR2
 Signal #1 Info : 30M x 0.32mm x0.5 Signal #2 Info : 30M x 0.32mm x0.25µm

Compound	RT#1	RT#2	Resp#1	Resp#2	ng/ml	ng/ml

System Monitoring Compounds						
1) SA Tetrachlo...	3.573	2.885	311.7E6	513.3E6	103.013	102.954
28) SA Decachlor...	9.102	8.063	229.2E6	447.8E6	101.497	101.103
Target Compounds						
23) Chlordane-1	4.740	3.906	176.9E6	197.0E6	1009.976	1035.759
24) Chlordane-2	5.267	4.487	184.8E6	216.8E6	989.631	1000.100
25) Chlordane-3	5.974	5.123	765.7E6	672.5E6	1049.789	1030.661
26) Chlordane-4	6.058	5.187	924.0E6	576.3E6	1040.798	1020.178
27) Chlordane-5	6.899	6.082	136.5E6	258.2E6	1022.973	1035.006

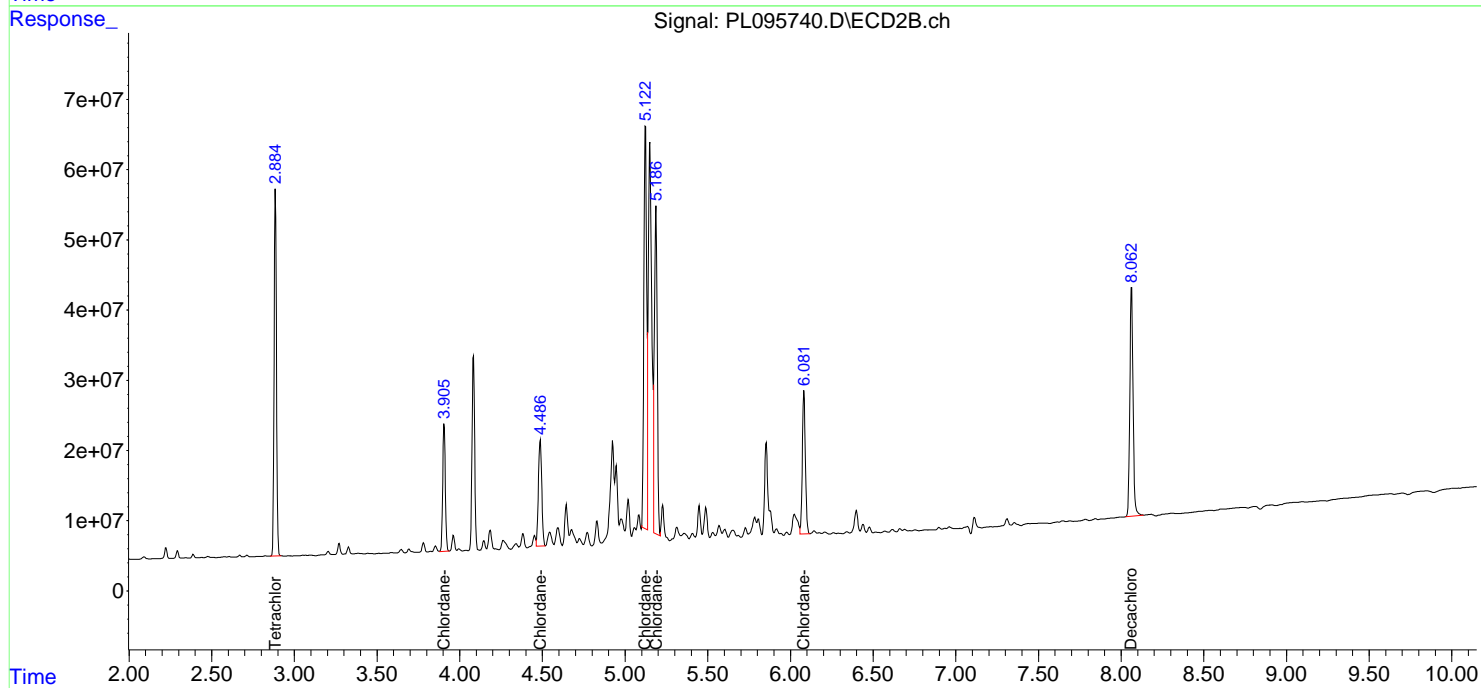
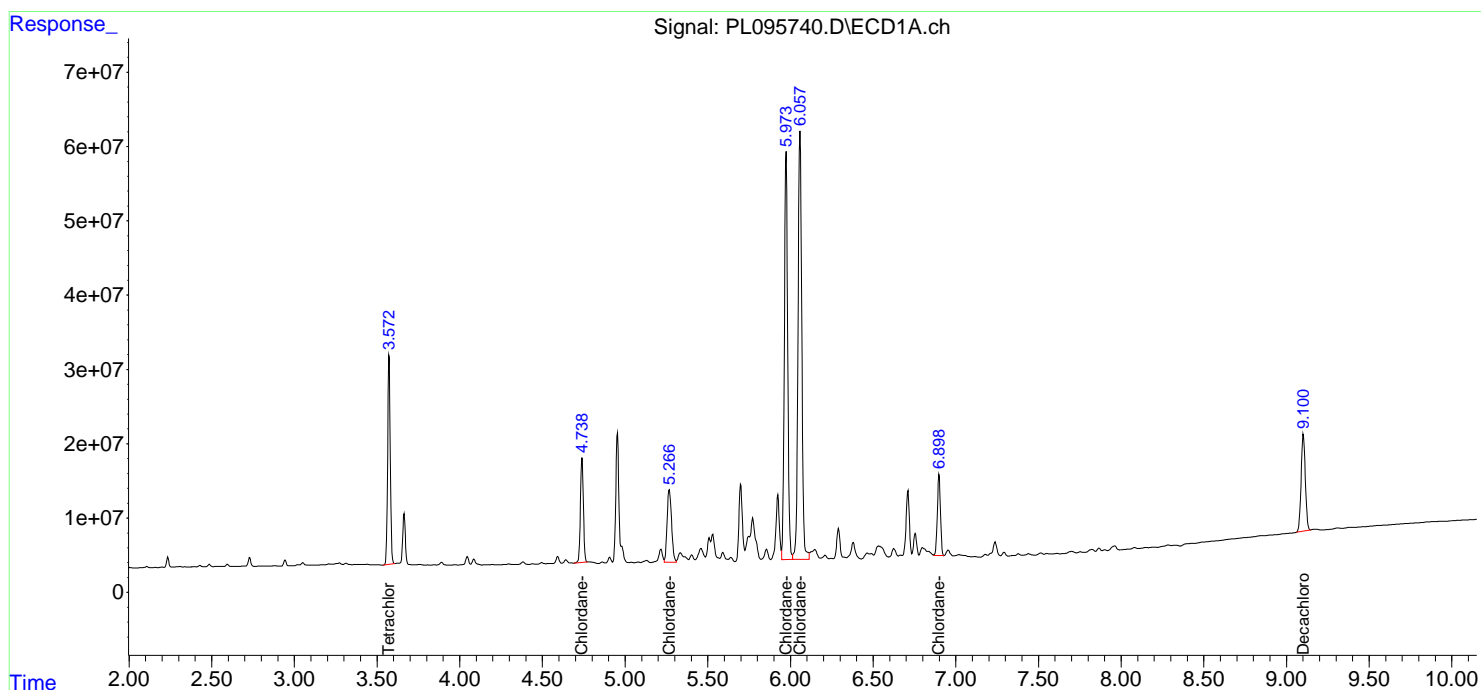
(f)=RT Delta > 1/2 Window (#)=Amounts differ by > 25% (m)=manual int.

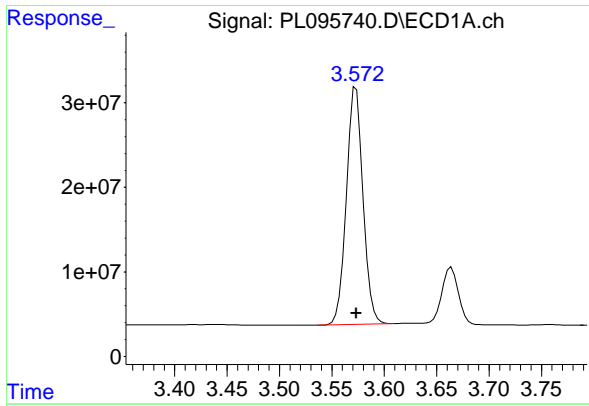
Data Path : Z:\pestpcbsrv\HPCHEM1\ECD_L\Data\PL052125\
 Data File : PL095740.D
 Signal(s) : Signal #1: ECD1A.ch Signal #2: ECD2B.ch
 Acq On : 21 May 2025 12:42
 Operator : AR\AJ
 Sample : PCHLORICC1000
 Misc :
 ALS Vial : 10 Sample Multiplier: 1

Instrument :
 ECD_L
 ClientSampleId :
 PCHLORICC1000

Integration File signal 1: autoint1.e
 Integration File signal 2: autoint2.e
 Quant Time: May 22 05:53:17 2025
 Quant Method : Z:\pestpcbsrv\HPCHEM1\ECD_L\methods\PL052125.M
 Quant Title : GC Extractables
 QLast Update : Thu May 22 05:52:46 2025
 Response via : Initial Calibration
 Integrator: ChemStation

Volume Inj. : 1 µl
 Signal #1 Phase : ZB-MR1 Signal #2 Phase: ZB-MR2
 Signal #1 Info : 30M x 0.32mm x0.5 Signal #2 Info : 30M x 0.32mm x0.25µm

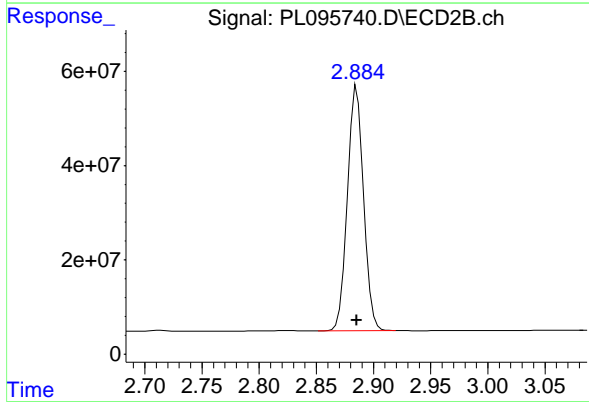




#1 Tetrachloro-m-xylene

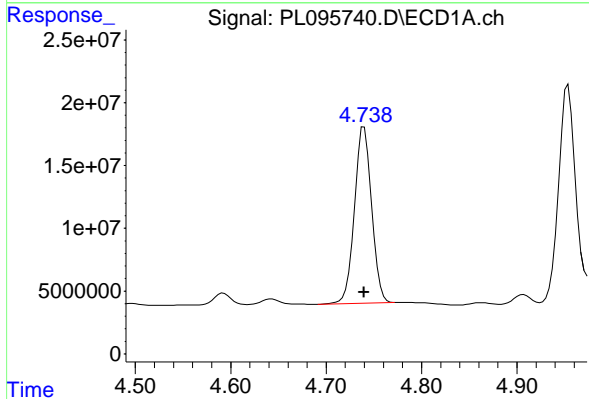
R.T.: 3.573 min
 Delta R.T.: 0.000 min
 Response: 311690463
 Conc: 103.01 ng/ml

Instrument :
 ECD_L
 ClientSampleId :
 PCHLORICC1000



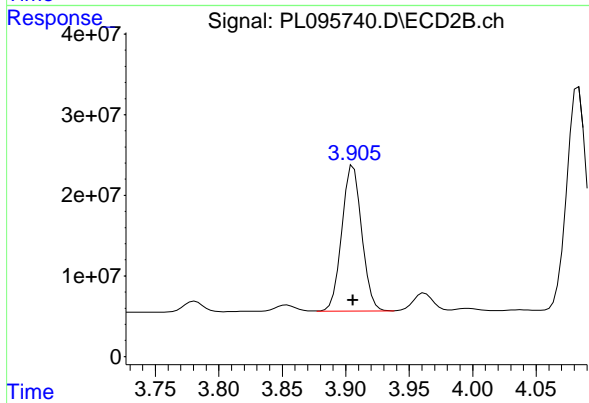
#1 Tetrachloro-m-xylene

R.T.: 2.885 min
 Delta R.T.: 0.000 min
 Response: 513343917
 Conc: 102.95 ng/ml



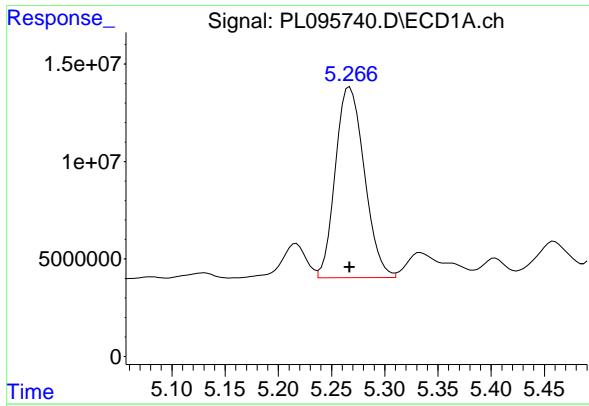
#23 Chlordane-1

R.T.: 4.740 min
 Delta R.T.: 0.000 min
 Response: 176910062
 Conc: 1009.98 ng/ml



#23 Chlordane-1

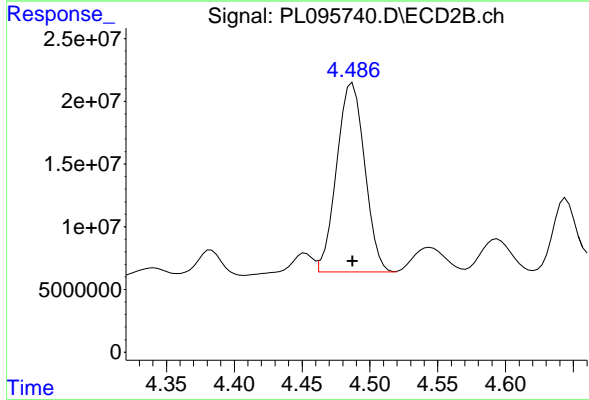
R.T.: 3.906 min
 Delta R.T.: 0.000 min
 Response: 197013425
 Conc: 1035.76 ng/ml



#24 Chlordane-2

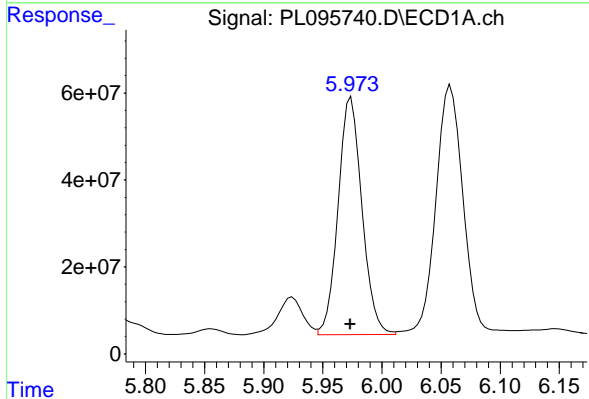
R.T.: 5.267 min
 Delta R.T.: 0.000 min
 Response: 184768939
 Conc: 989.63 ng/ml

Instrument :
 ECD_L
 ClientSampleId :
 PCHLORICC1000



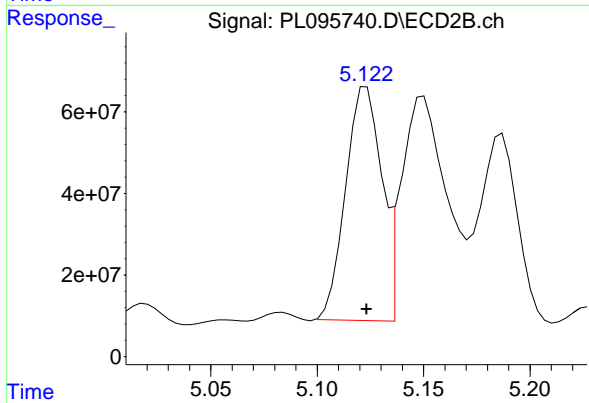
#24 Chlordane-2

R.T.: 4.487 min
 Delta R.T.: 0.000 min
 Response: 216789108
 Conc: 1000.10 ng/ml



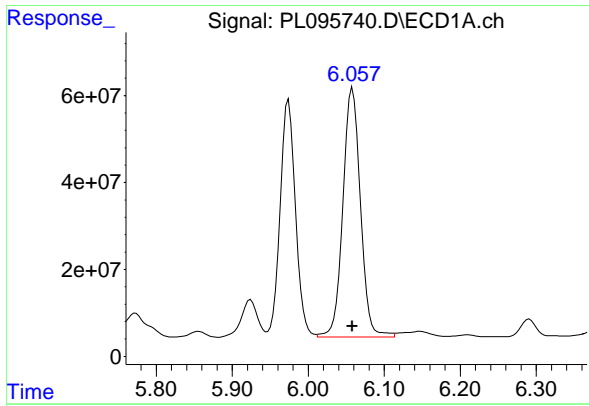
#25 Chlordane-3

R.T.: 5.974 min
 Delta R.T.: 0.000 min
 Response: 765697599
 Conc: 1049.79 ng/ml



#25 Chlordane-3

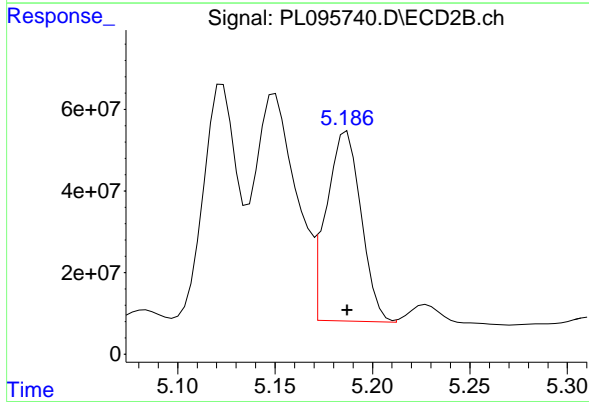
R.T.: 5.123 min
 Delta R.T.: 0.000 min
 Response: 672510771
 Conc: 1030.66 ng/ml



#26 Chlordane-4

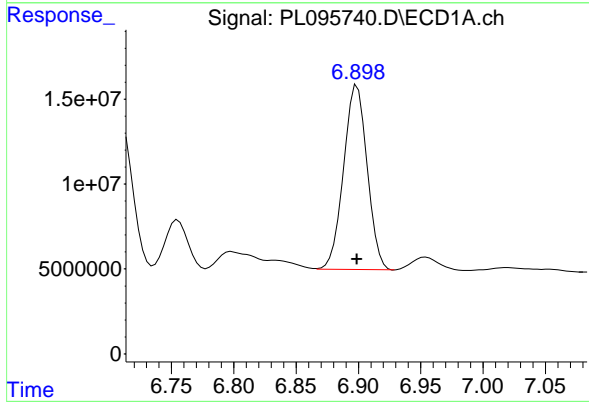
R.T.: 6.058 min
 Delta R.T.: 0.000 min
 Response: 924046648
 Conc: 1040.80 ng/ml

Instrument :
 ECD_L
 ClientSampleId :
 PCHLORICC1000



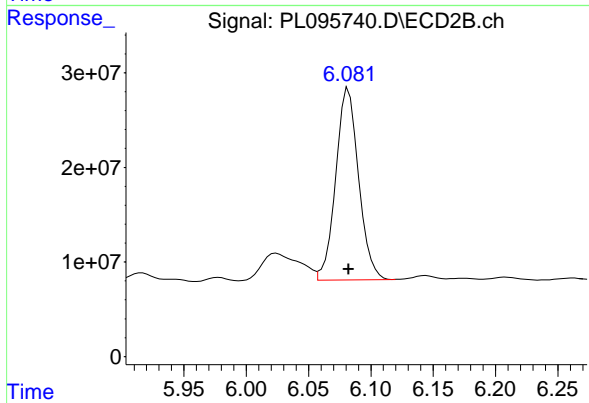
#26 Chlordane-4

R.T.: 5.187 min
 Delta R.T.: 0.000 min
 Response: 576338299
 Conc: 1020.18 ng/ml



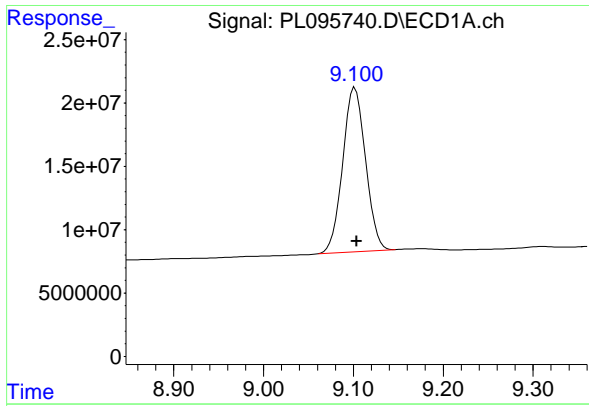
#27 Chlordane-5

R.T.: 6.899 min
 Delta R.T.: 0.000 min
 Response: 136544196
 Conc: 1022.97 ng/ml



#27 Chlordane-5

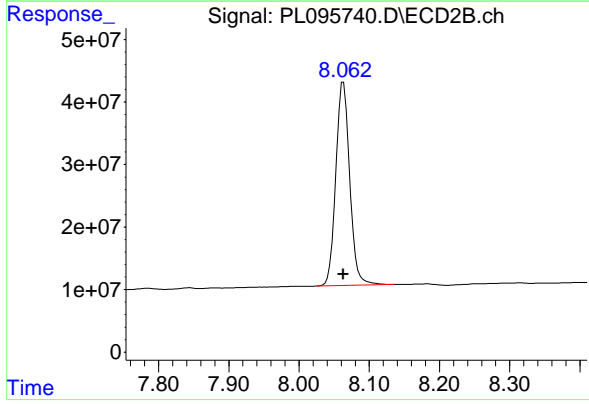
R.T.: 6.082 min
 Delta R.T.: 0.000 min
 Response: 258188478
 Conc: 1035.01 ng/ml



#28 Decachlorobiphenyl

R.T.: 9.102 min
Delta R.T.: -0.002 min
Response: 229215739
Conc: 101.50 ng/ml

Instrument :
ECD_L
ClientSampleId :
PCHLORICC1000



#28 Decachlorobiphenyl

R.T.: 8.063 min
Delta R.T.: 0.000 min
Response: 447806781
Conc: 101.10 ng/ml