

Data Path : Z:\pestpcbsrv\HPCHEM1\ECD\_D\Data\PD051925\  
 Data File : PD088596.D  
 Signal(s) : Signal #1: ECD1A.ch Signal #2: ECD2B.ch  
 Acq On : 19 May 2025 13:47  
 Operator : AR\AJ  
 Sample : PTOXICC1000  
 Misc :  
 ALS Vial : 15 Sample Multiplier: 1

**Instrument :**  
 ECD\_D  
**ClientSampleId :**  
 PTOXICC1000

Integration File signal 1: autoint1.e  
 Integration File signal 2: autoint2.e  
 Quant Time: May 19 14:26:00 2025  
 Quant Method : Z:\pestpcbsrv\HPCHEM1\ECD\_D\Method\DTX051925.M  
 Quant Title : GC Extractables  
 QLast Update : Mon May 19 14:24:19 2025  
 Response via : Initial Calibration  
 Integrator: ChemStation

Volume Inj. : 1 µl  
 Signal #1 Phase : ZB-MR1 Signal #2 Phase: ZB-MR2  
 Signal #1 Info : 30M x 0.32mm x 0. Signal #2 Info : 30M x 0.32mm x0.25µm

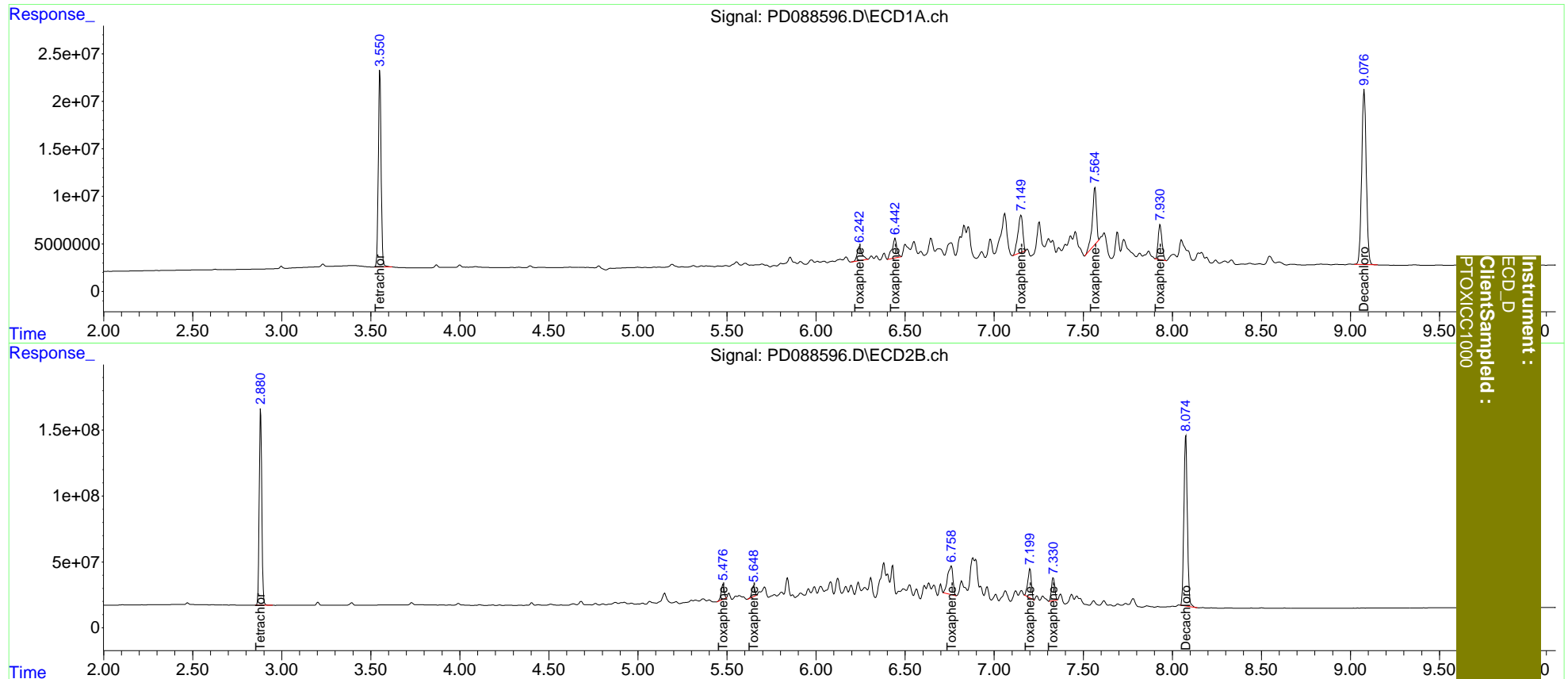
Compound	RT#1	RT#2	Resp#1	Resp#2	ng/ml	ng/ml
-----						
System Monitoring Compounds						
1) SA Tetrachlo...	3.551	2.882	226.3E6	1497.1E6	102.337	99.836
7) SA Decachlor...	9.077	8.076	331.2E6	1749.7E6	99.406	99.118
Target Compounds						
2) Toxaphene-1	6.244	5.478	27539074	133.0E6	1021.313	977.240
3) Toxaphene-2	6.443	5.649	38175593	92222033	1000.734	990.033
4) Toxaphene-3	7.150	6.759	74658776	444.0E6	1016.132	1007.823
5) Toxaphene-4	7.566	7.201	96380948	304.9E6	1026.456	989.605
6) Toxaphene-5	7.931	7.332	54472082	224.7E6	1020.730	1017.438
-----						

(f)=RT Delta > 1/2 Window (#)=Amounts differ by > 25% (m)=manual int.

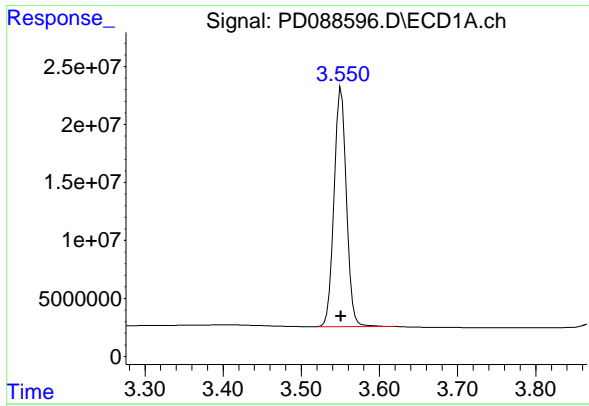
Data Path : Z:\pestpcbsrv\HPCHEM1\ECD\_D\Data\PD051925\  
 Data File : PD088596.D  
 Signal(s) : Signal #1: ECD1A.ch Signal #2: ECD2B.ch  
 Acq On : 19 May 2025 13:47  
 Operator : AR\AJ  
 Sample : PTOXICC1000  
 Misc :  
 ALS Vial : 15 Sample Multiplier: 1

Integration File signal 1: autoint1.e  
 Integration File signal 2: autoint2.e  
 Quant Time: May 19 14:26:00 2025  
 Quant Method : Z:\pestpcbsrv\HPCHEM1\ECD\_D\Method\DTX051925.M  
 Quant Title : GC Extractables  
 QLast Update : Mon May 19 14:24:19 2025  
 Response via : Initial Calibration  
 Integrator: ChemStation

Volume Inj. : 1 µl  
 Signal #1 Phase : ZB-MR1 Signal #2 Phase: ZB-MR2  
 Signal #1 Info : 30M x 0.32mm x 0. Signal #2 Info : 30M x 0.32mm x0.25µm



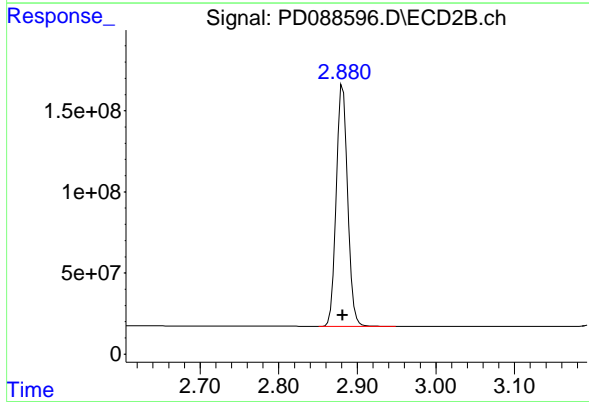
Instrument :  
 ECD\_D  
 ClientSampled :  
 PTOXICC1000



#1 Tetrachloro-m-xylene

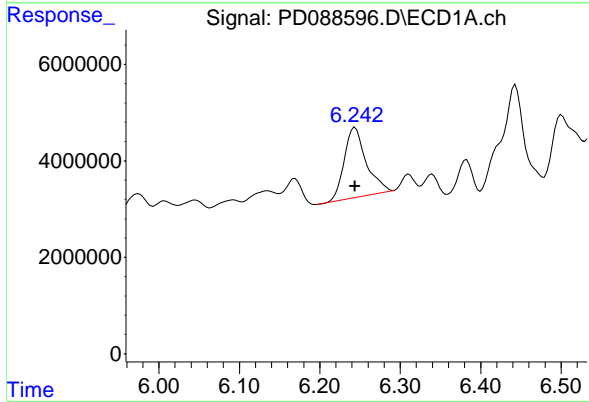
R.T.: 3.551 min  
 Delta R.T.: 0.000 min  
 Response: 226304468  
 Conc: 102.34 ng/ml

Instrument :  
 ECD\_D  
 ClientSampleId :  
 PTOXICC1000



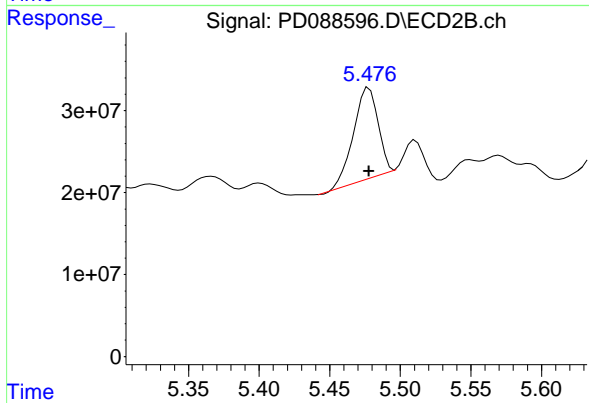
#1 Tetrachloro-m-xylene

R.T.: 2.882 min  
 Delta R.T.: 0.000 min  
 Response: 1497079810  
 Conc: 99.84 ng/ml



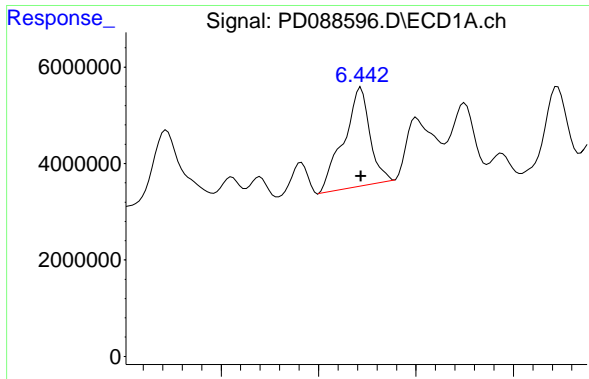
#2 Toxaphene-1

R.T.: 6.244 min  
 Delta R.T.: 0.000 min  
 Response: 27539074  
 Conc: 1021.31 ng/ml



#2 Toxaphene-1

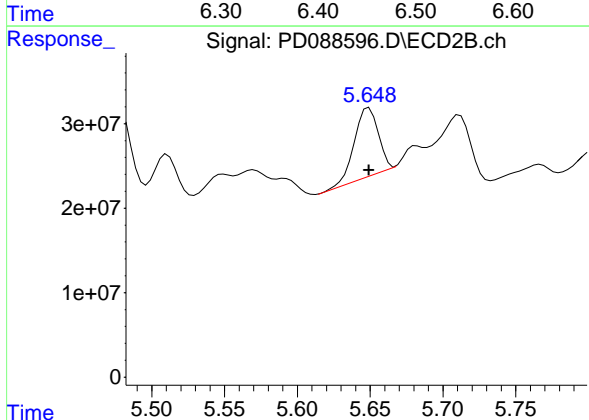
R.T.: 5.478 min  
 Delta R.T.: 0.000 min  
 Response: 133034231  
 Conc: 977.24 ng/ml



#3 Toxaphene-2

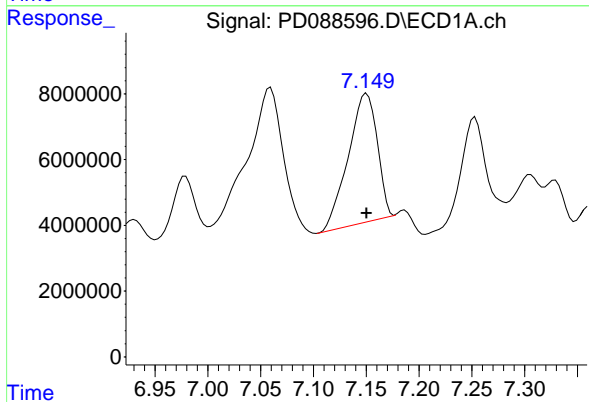
R.T.: 6.443 min  
 Delta R.T.: 0.000 min  
 Response: 38175593  
 Conc: 1000.73 ng/ml

Instrument :  
 ECD\_D  
 ClientSampleId :  
 PTOXICC1000



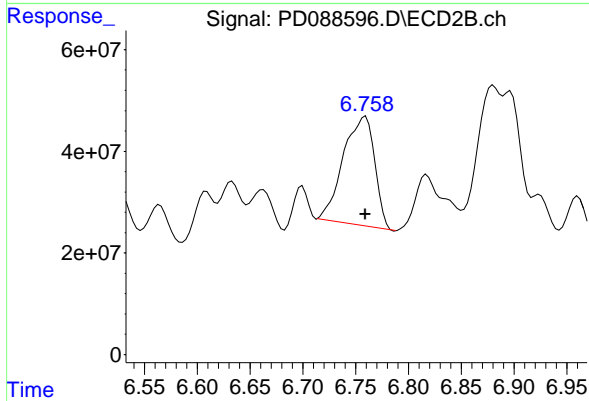
#3 Toxaphene-2

R.T.: 5.649 min  
 Delta R.T.: 0.000 min  
 Response: 92222033  
 Conc: 990.03 ng/ml



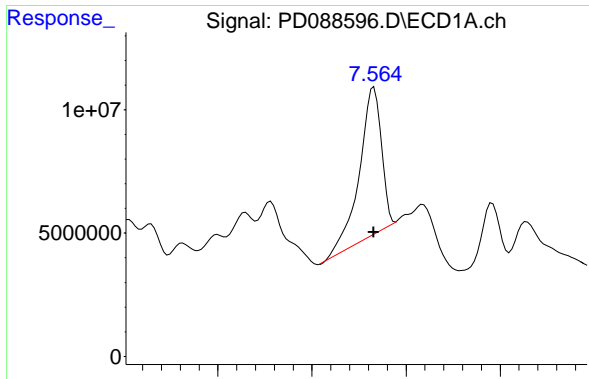
#4 Toxaphene-3

R.T.: 7.150 min  
 Delta R.T.: 0.000 min  
 Response: 74658776  
 Conc: 1016.13 ng/ml



#4 Toxaphene-3

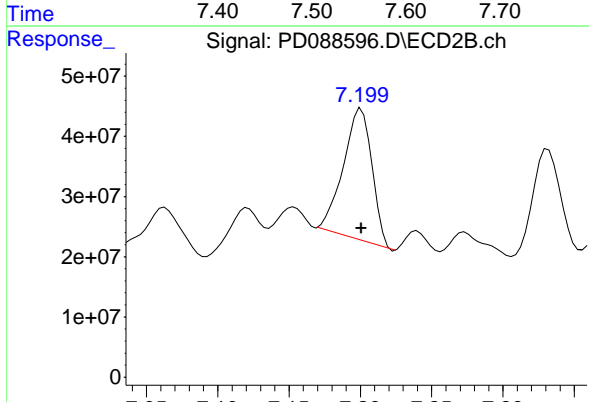
R.T.: 6.759 min  
 Delta R.T.: 0.000 min  
 Response: 443975761  
 Conc: 1007.82 ng/ml



#5 Toxaphene-4

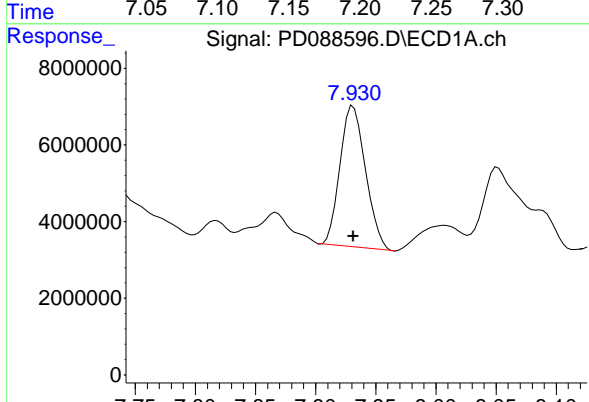
R.T.: 7.566 min  
 Delta R.T.: 0.000 min  
 Response: 96380948  
 Conc: 1026.46 ng/ml

Instrument :  
 ECD\_D  
 ClientSampleId :  
 PTOXICC1000



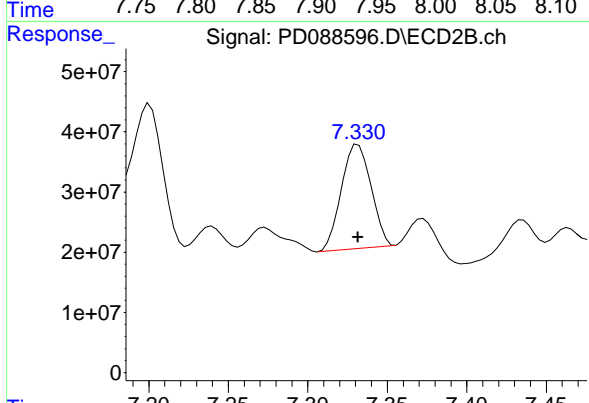
#5 Toxaphene-4

R.T.: 7.201 min  
 Delta R.T.: 0.000 min  
 Response: 304879748  
 Conc: 989.61 ng/ml



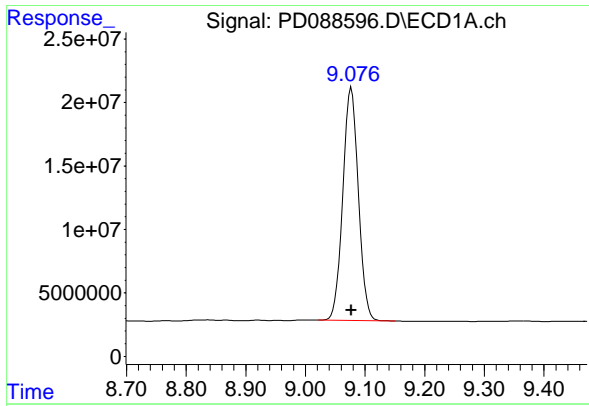
#6 Toxaphene-5

R.T.: 7.931 min  
 Delta R.T.: 0.000 min  
 Response: 54472082  
 Conc: 1020.73 ng/ml



#6 Toxaphene-5

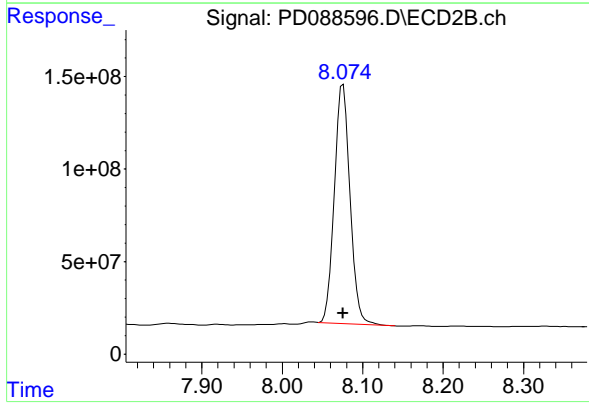
R.T.: 7.332 min  
 Delta R.T.: 0.000 min  
 Response: 224676694  
 Conc: 1017.44 ng/ml



#7 Decachlorobiphenyl

R.T.: 9.077 min  
Delta R.T.: 0.000 min  
Response: 331163762  
Conc: 99.41 ng/ml

Instrument :  
ECD\_D  
ClientSampleId :  
PTOXICC1000



#7 Decachlorobiphenyl

R.T.: 8.076 min  
Delta R.T.: 0.000 min  
Response: 1749687936  
Conc: 99.12 ng/ml