

Data Path : Z:\pestpcbsrv\HPCHEM1\ECD\_L\Data\PL042325\  
 Data File : PL095327.D  
 Signal(s) : Signal #1: ECD1A.ch Signal #2: ECD2B.ch  
 Acq On : 23 Apr 2025 11:04  
 Operator : AR\AJ  
 Sample : PEM  
 Misc :  
 ALS Vial : 3 Sample Multiplier: 1

**Instrument :**  
 ECD\_L  
**ClientSampleId :**  
 PEM

**Manual Integrations**  
**APPROVED**  
 Reviewed By :Abdul Mirza 04/24/2025  
 Supervised By :mohammad ahmed 04/26/2025

Integration File signal 1: autoint1.e  
 Integration File signal 2: autoint2.e  
 Quant Time: Apr 23 14:09:20 2025  
 Quant Method : Z:\pestpcbsrv\HPCHEM1\ECD\_L\methods\PL042325.M  
 Quant Title : GC Extractables  
 QLast Update : Wed Apr 23 14:07:39 2025  
 Response via : Initial Calibration  
 Integrator: ChemStation

Volume Inj. : 1 µl  
 Signal #1 Phase : ZB-MR1 Signal #2 Phase: ZB-MR2  
 Signal #1 Info : 30M x 0.32mm x0.5 Signal #2 Info : 30M x 0.32mm x0.25µm

Compound	RT#1	RT#2	Resp#1	Resp#2	ng/ml	ng/ml
-----						
System Monitoring Compounds						
1) SA Tetrachlo...	3.594	2.905	73541125	72472220	22.526	22.792
28) SA Decachlor...	9.122	8.089	65094644	68362526	23.493	23.101
Target Compounds						
2) A alpha-BHC	4.045	3.415	54247618	49140358	10.951	11.046
3) MA gamma-BHC...	4.375	3.748	53220046	48800893	11.242m	11.096
6) B beta-BHC	4.563	4.042	22651669	23957368	10.956	11.541
14) MA Endrin	6.622	5.806	174.6E6	208.2E6	54.830	57.181
16) A 4,4'-DDD	6.747	5.947	691015	795341	0.244m	0.243m
17) MA 4,4'-DDT	7.067	6.203	320.7E6	398.5E6	112.579	115.976
18) B Endrin al...	6.964	6.276	291372	1927807	0.126m	0.738m#
20) A Methoxychlor	7.538	6.774	370.0E6	483.6E6	265.186	253.560
21) B Endrin ke...	7.676	7.001	1520869	1991496	0.533m	0.566m
-----						

(f)=RT Delta > 1/2 Window (#)=Amounts differ by > 25% (m)=manual int.

Data Path : Z:\pestpcbsrv\HPCHEM1\ECD\_L\Data\PL042325\  
 Data File : PL095327.D  
 Signal(s) : Signal #1: ECD1A.ch Signal #2: ECD2B.ch  
 Acq On : 23 Apr 2025 11:04  
 Operator : AR\AJ  
 Sample : PEM  
 Misc :  
 ALS Vial : 3 Sample Multiplier: 1

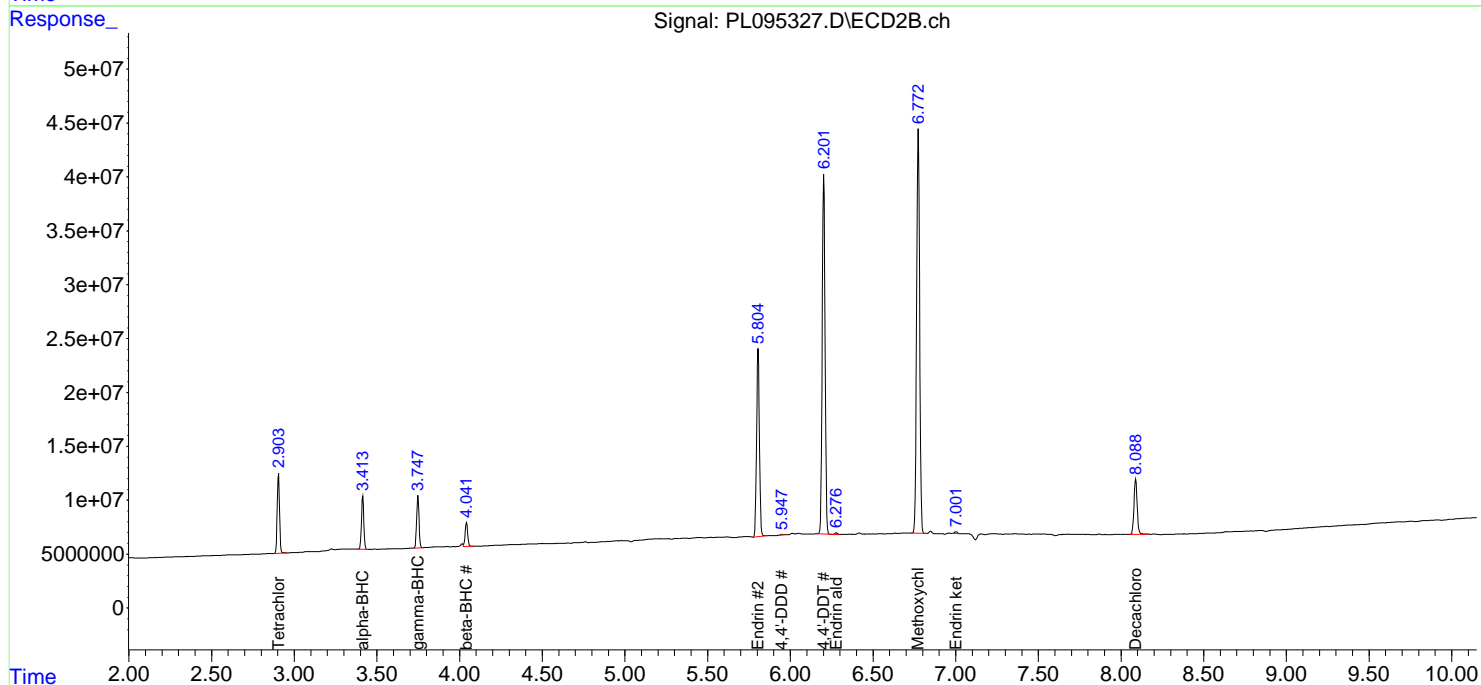
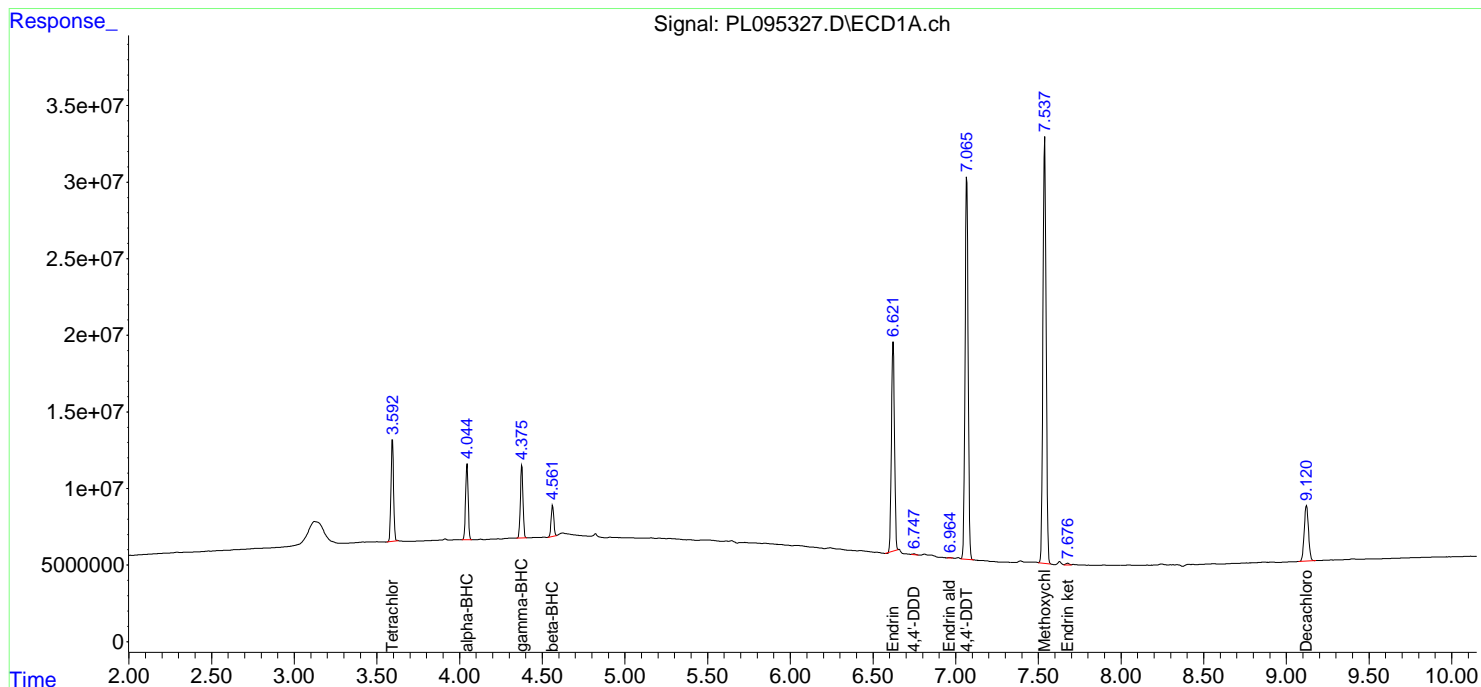
**Instrument :**  
 ECD\_L  
**ClientSampleId :**  
 PEM

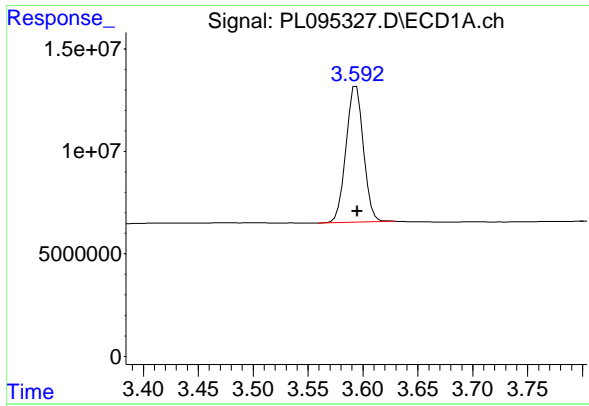
**Manual Integrations**  
**APPROVED**

Reviewed By :Abdul Mirza 04/24/2025  
 Supervised By :mohammad ahmed 04/26/2025

Integration File signal 1: autoint1.e  
 Integration File signal 2: autoint2.e  
 Quant Time: Apr 23 14:09:20 2025  
 Quant Method : Z:\pestpcbsrv\HPCHEM1\ECD\_L\methods\PL042325.M  
 Quant Title : GC Extractables  
 QLast Update : Wed Apr 23 14:07:39 2025  
 Response via : Initial Calibration  
 Integrator: ChemStation

Volume Inj. : 1 µl  
 Signal #1 Phase : ZB-MR1 Signal #2 Phase: ZB-MR2  
 Signal #1 Info : 30M x 0.32mm x0.5 Signal #2 Info : 30M x 0.32mm x0.25µm





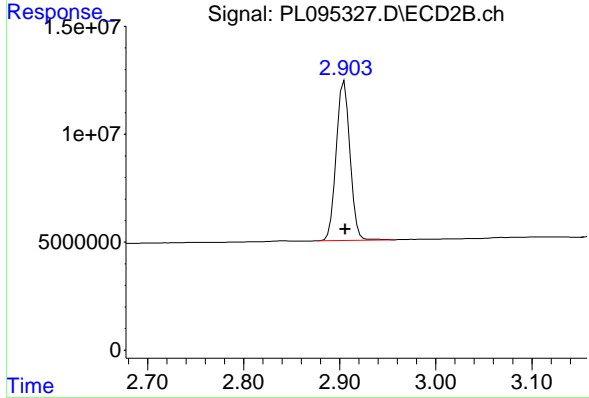
#1 Tetrachloro-m-xylene

R.T.: 3.594 min  
 Delta R.T.: -0.001 min  
 Response: 73541125  
 Conc: 22.53 ng/ml

Instrument :  
 ECD\_L  
 ClientSampleId :  
 PEM

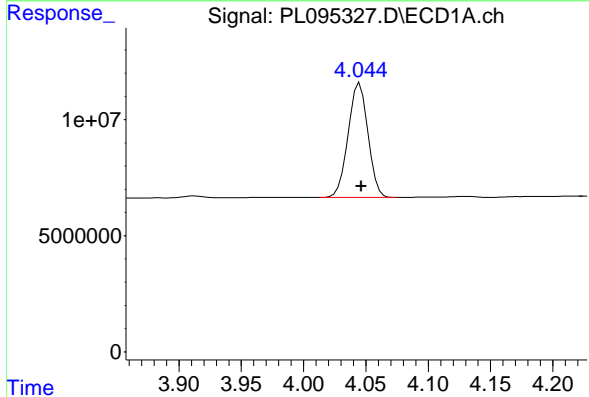
Manual Integrations  
 APPROVED

Reviewed By :Abdul Mirza 04/24/2025  
 Supervised By :mohammad ahmed 04/26/2025



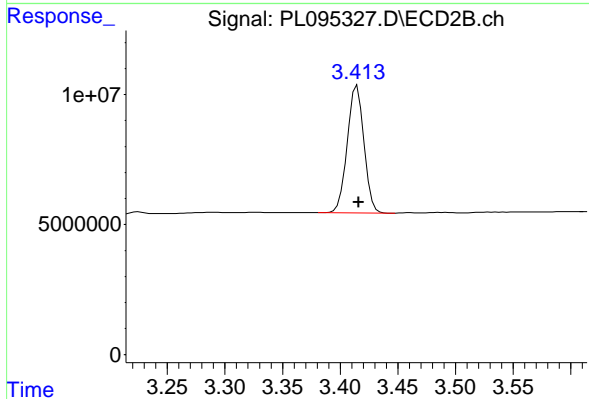
#1 Tetrachloro-m-xylene

R.T.: 2.905 min  
 Delta R.T.: 0.000 min  
 Response: 72472220  
 Conc: 22.79 ng/ml



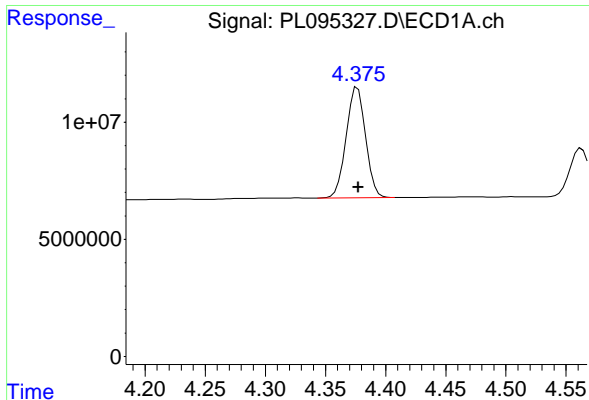
#2 alpha-BHC

R.T.: 4.045 min  
 Delta R.T.: -0.001 min  
 Response: 54247618  
 Conc: 10.95 ng/ml



#2 alpha-BHC

R.T.: 3.415 min  
 Delta R.T.: -0.002 min  
 Response: 49140358  
 Conc: 11.05 ng/ml



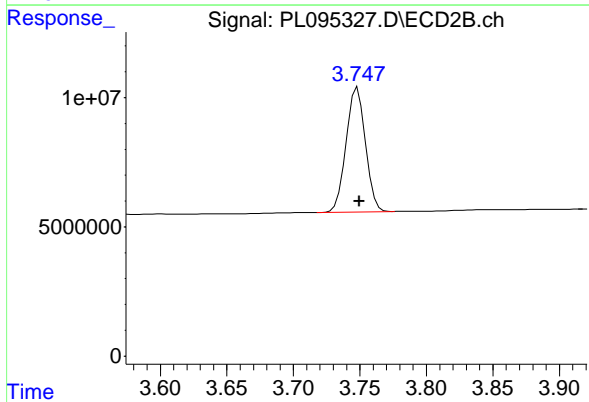
#3 gamma-BHC (Lindane)

R.T.: 4.375 min  
 Delta R.T.: -0.002 min  
 Response: 53220046  
 Conc: 11.24 ng/ml

Instrument :  
 ECD\_L  
 ClientSampleId :  
 PEM

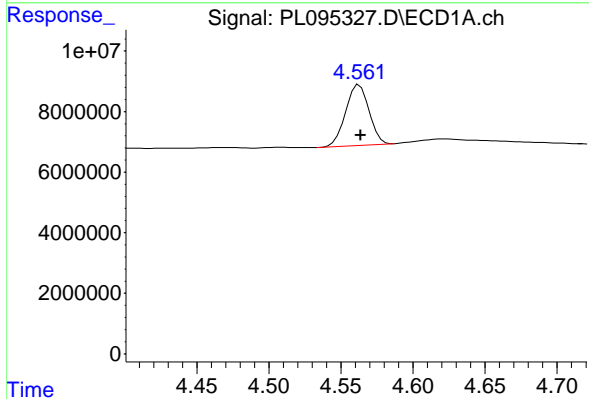
Manual Integrations  
 APPROVED

Reviewed By :Abdul Mirza 04/24/2025  
 Supervised By :mohammad ahmed 04/26/2025



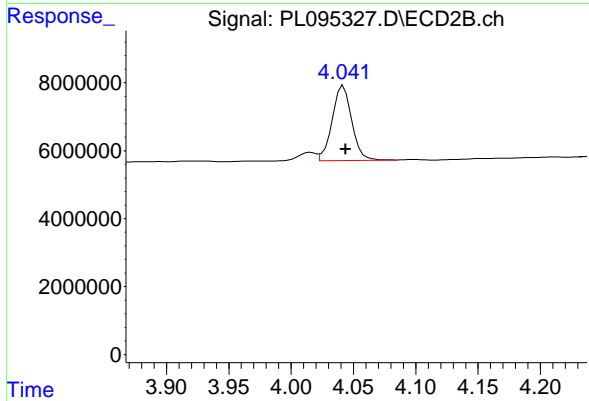
#3 gamma-BHC (Lindane)

R.T.: 3.748 min  
 Delta R.T.: -0.002 min  
 Response: 48800893  
 Conc: 11.10 ng/ml



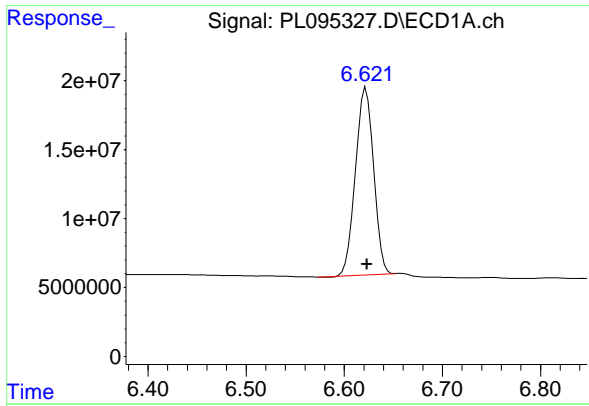
#6 beta-BHC

R.T.: 4.563 min  
 Delta R.T.: 0.000 min  
 Response: 22651669  
 Conc: 10.96 ng/ml



#6 beta-BHC

R.T.: 4.042 min  
 Delta R.T.: -0.002 min  
 Response: 23957368  
 Conc: 11.54 ng/ml



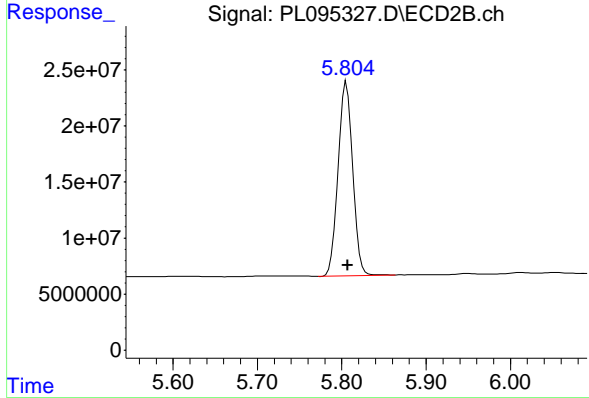
#14 Endrin

R.T.: 6.622 min  
 Delta R.T.: 0.000 min  
 Response: 174620420  
 Conc: 54.83 ng/ml

Instrument :  
 ECD\_L  
 ClientSampleId :  
 PEM

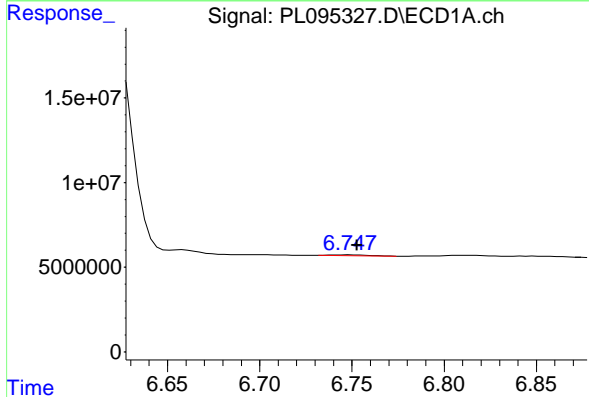
Manual Integrations  
 APPROVED

Reviewed By :Abdul Mirza 04/24/2025  
 Supervised By :mohammad ahmed 04/26/2025



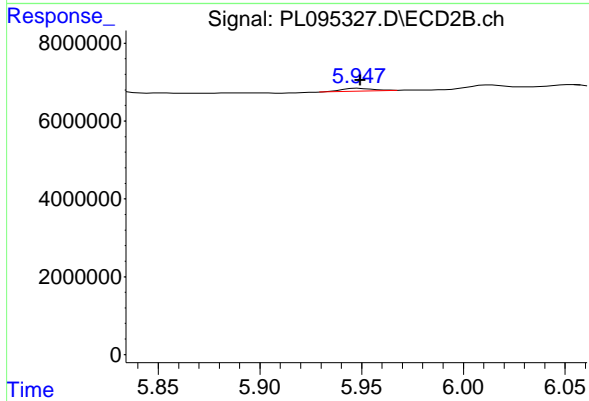
#14 Endrin

R.T.: 5.806 min  
 Delta R.T.: -0.001 min  
 Response: 208180230  
 Conc: 57.18 ng/ml



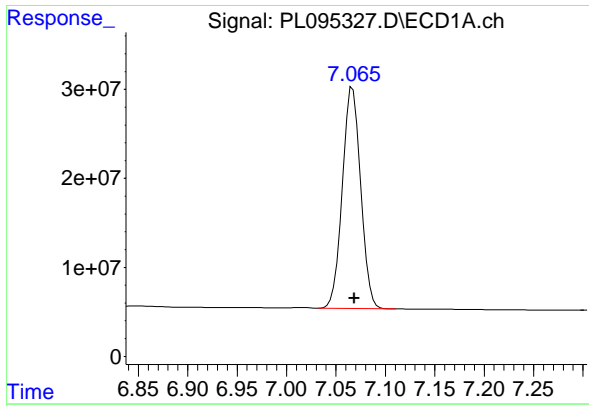
#16 4,4'-DDD

R.T.: 6.747 min  
 Delta R.T.: -0.005 min  
 Response: 691015  
 Conc: 0.24 ng/ml m



#16 4,4'-DDD

R.T.: 5.947 min  
 Delta R.T.: -0.002 min  
 Response: 795341  
 Conc: 0.24 ng/ml m



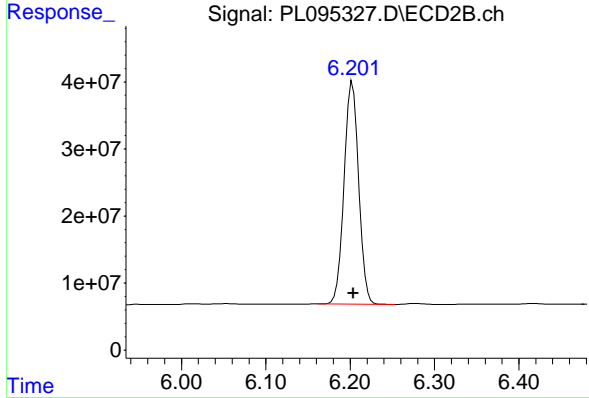
#17 4,4' -DDT

R.T.: 7.067 min  
 Delta R.T.: -0.002 min  
 Response: 320688921  
 Conc: 112.58 ng/ml

Instrument : ECD\_L  
 ClientSampleId : PEM

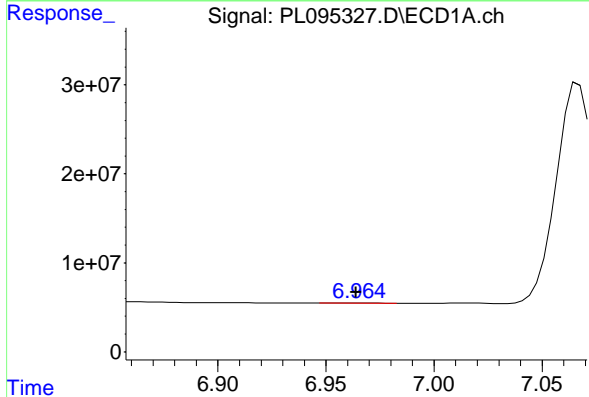
Manual Integrations  
 APPROVED

Reviewed By :Abdul Mirza 04/24/2025  
 Supervised By :mohammad ahmed 04/26/2025



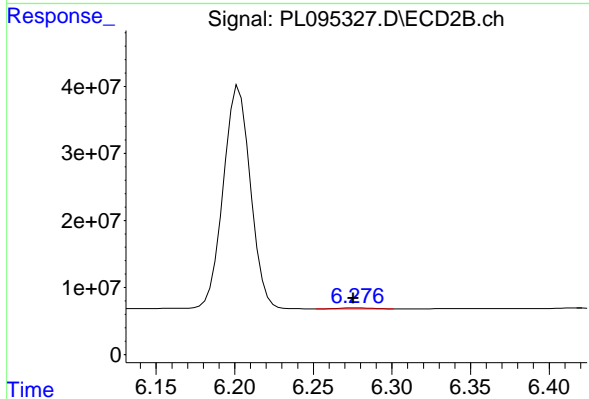
#17 4,4' -DDT

R.T.: 6.203 min  
 Delta R.T.: -0.001 min  
 Response: 398515432  
 Conc: 115.98 ng/ml



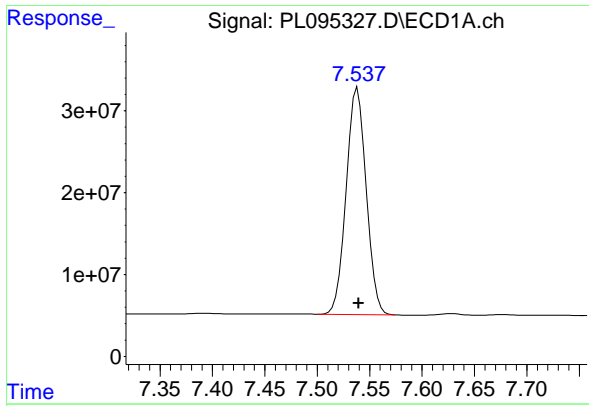
#18 Endrin aldehyde

R.T.: 6.964 min  
 Delta R.T.: 0.000 min  
 Response: 291372  
 Conc: 0.13 ng/ml m



#18 Endrin aldehyde

R.T.: 6.276 min  
 Delta R.T.: 0.000 min  
 Response: 1927807  
 Conc: 0.74 ng/ml m



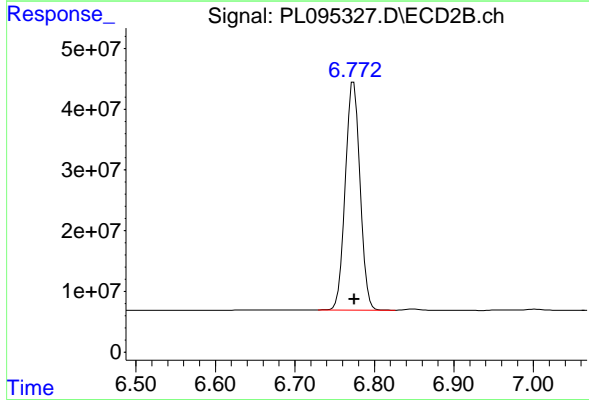
#20 Methoxychlor

R.T.: 7.538 min  
 Delta R.T.: -0.001 min  
 Response: 369969247  
 Conc: 265.19 ng/ml

Instrument :  
 ECD\_L  
 ClientSampleId :  
 PEM

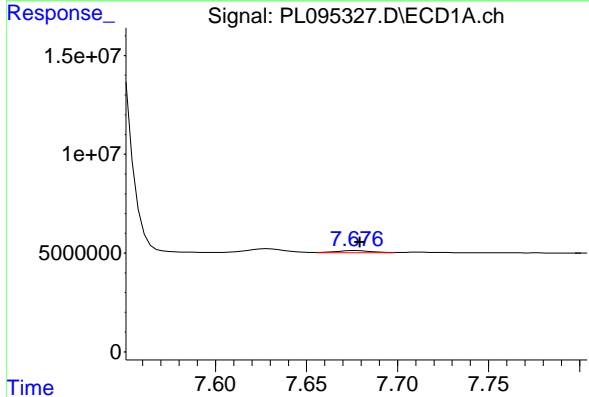
Manual Integrations  
 APPROVED

Reviewed By :Abdul Mirza 04/24/2025  
 Supervised By :mohammad ahmed 04/26/2025



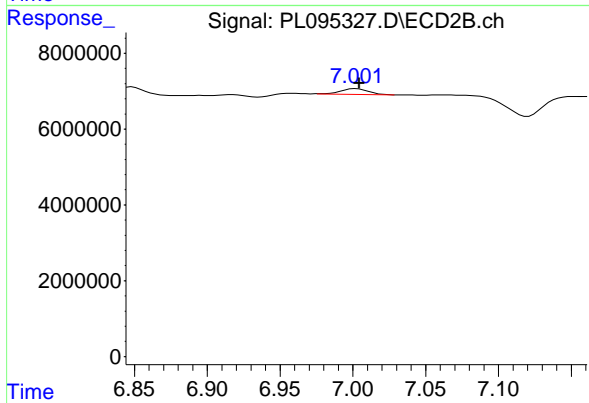
#20 Methoxychlor

R.T.: 6.774 min  
 Delta R.T.: 0.000 min  
 Response: 483648088  
 Conc: 253.56 ng/ml



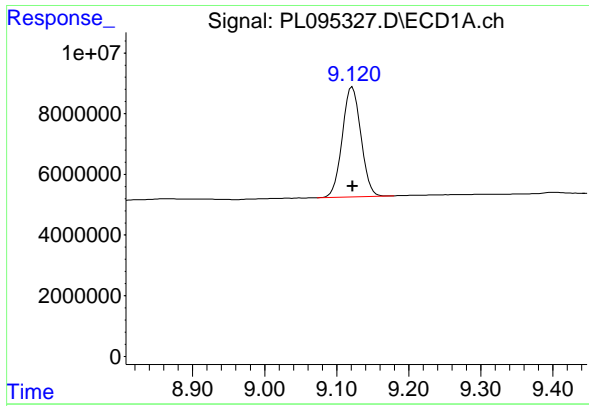
#21 Endrin ketone

R.T.: 7.676 min  
 Delta R.T.: -0.003 min  
 Response: 1520869  
 Conc: 0.53 ng/ml m



#21 Endrin ketone

R.T.: 7.001 min  
 Delta R.T.: -0.004 min  
 Response: 1991496  
 Conc: 0.57 ng/ml m



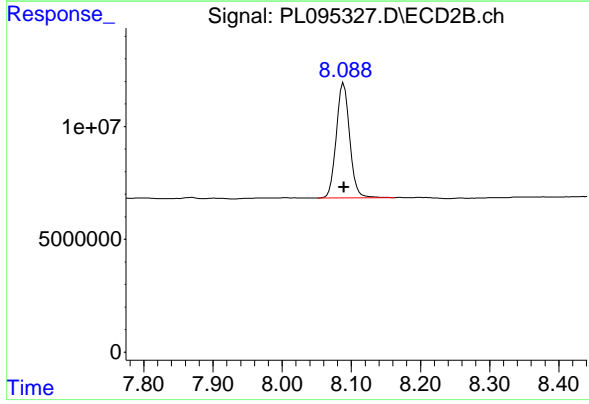
#28 Decachlorobiphenyl

R.T.: 9.122 min  
 Delta R.T.: 0.000 min  
 Response: 65094644  
 Conc: 23.49 ng/ml

Instrument :  
 ECD\_L  
 ClientSampleId :  
 PEM

Manual Integrations  
 APPROVED

Reviewed By :Abdul Mirza 04/24/2025  
 Supervised By :mohammad ahmed 04/26/2025



#28 Decachlorobiphenyl

R.T.: 8.089 min  
 Delta R.T.: 0.000 min  
 Response: 68362526  
 Conc: 23.10 ng/ml