

Data Path : Z:\pestpcbsrv\HPCHEM1\ECD_L\Data\PL042325\
 Data File : PL095328.D
 Signal(s) : Signal #1: ECD1A.ch Signal #2: ECD2B.ch
 Acq On : 23 Apr 2025 11:18
 Operator : AR\AJ
 Sample : RESCHK
 Misc :
 ALS Vial : 4 Sample Multiplier: 1

Instrument :
 ECD_L
ClientSampleId :
 RESCHK

Manual Integrations
APPROVED
 Reviewed By :Abdul Mirza 04/24/2025
 Supervised By :mohammad ahmed 04/26/2025

Integration File signal 1: autoint1.e
 Integration File signal 2: autoint2.e
 Quant Time: Apr 23 14:09:41 2025
 Quant Method : Z:\pestpcbsrv\HPCHEM1\ECD_L\methods\PL042325.M
 Quant Title : GC Extractables
 QLast Update : Wed Apr 23 14:07:39 2025
 Response via : Initial Calibration
 Integrator: ChemStation

Volume Inj. : 1 µl
 Signal #1 Phase : ZB-MR1 Signal #2 Phase: ZB-MR2
 Signal #1 Info : 30M x 0.32mm x0.5 Signal #2 Info : 30M x 0.32mm x0.25µm

Compound	RT#1	RT#2	Resp#1	Resp#2	ng/ml	ng/ml

System Monitoring Compounds						
1) SA Tetrachlo...	3.594	2.906	62004694	61272348	18.993	19.270
28) SA Decachlor...	9.122	8.089	53403082	56912207	19.273	19.232
Target Compounds						
9) A Endosulfan I	6.122	5.266	32613312	32263148	8.588	8.814
10) B gamma-Chl...	5.992	5.144	37114775	37866092	9.098	9.343m
12) B 4,4'-DDE	6.242	5.397	74307748	78460494	18.953	19.292
13) MA Dieldrin	6.395	5.531	71017950	76605618	18.423	18.836
19) B Endosulfa...	7.197	6.498	53082691	63329750	18.946	19.087
20) A Methoxychlor	7.539	6.775	125.8E6	173.2E6	90.164	90.816
21) B Endrin ke...	7.678	7.004	53522821	65934818	18.774	18.725

(f)=RT Delta > 1/2 Window (#)=Amounts differ by > 25% (m)=manual int.

Data Path : Z:\pestpcbsrv\HPCHEM1\ECD_L\Data\PL042325\
 Data File : PL095328.D
 Signal(s) : Signal #1: ECD1A.ch Signal #2: ECD2B.ch
 Acq On : 23 Apr 2025 11:18
 Operator : AR\AJ
 Sample : RESCHK
 Misc :
 ALS Vial : 4 Sample Multiplier: 1

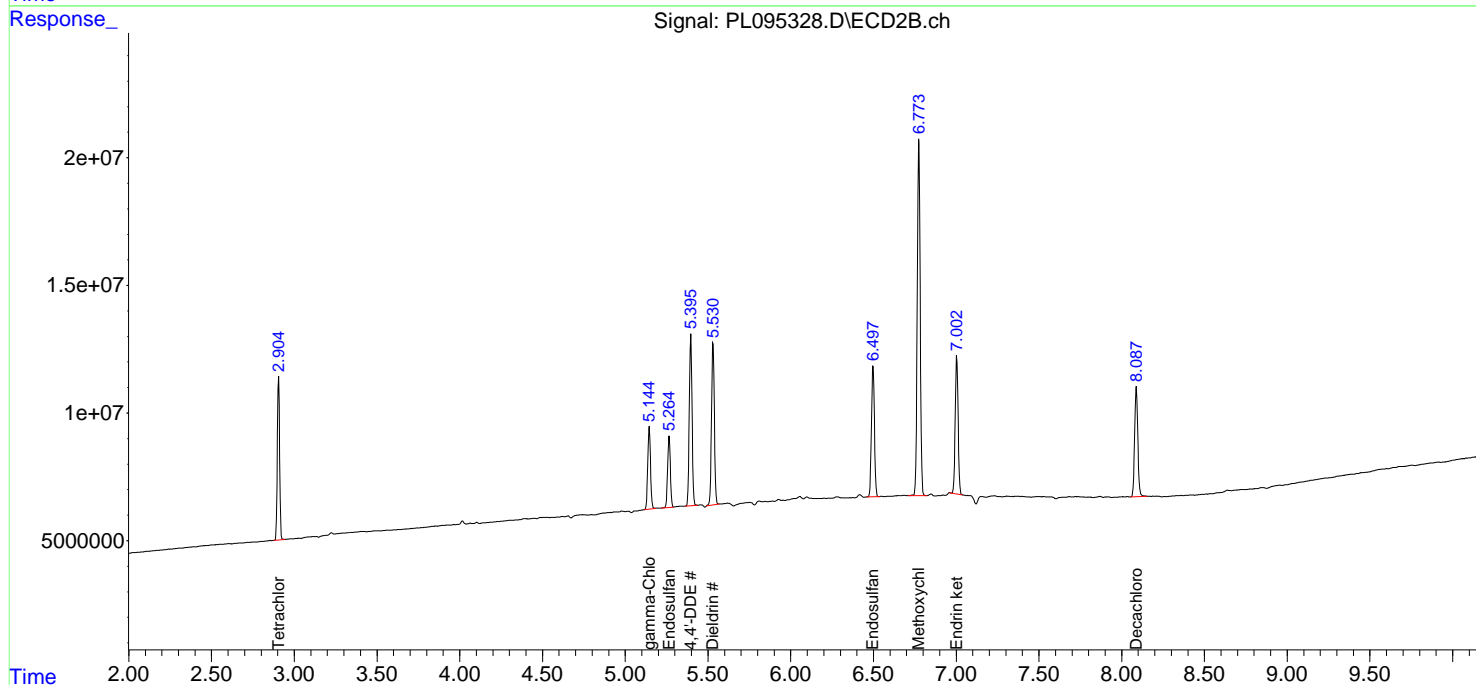
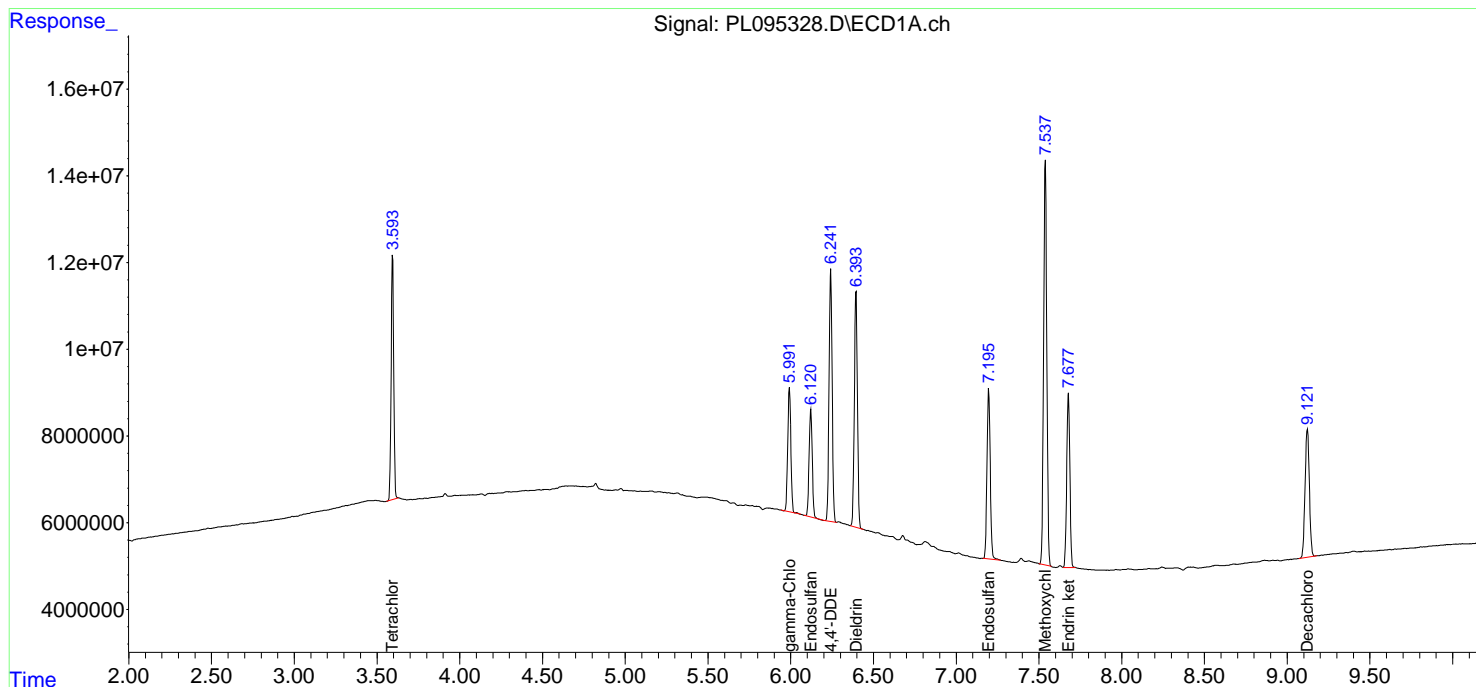
Instrument :
 ECD_L
ClientSampleId :
 RESCHK

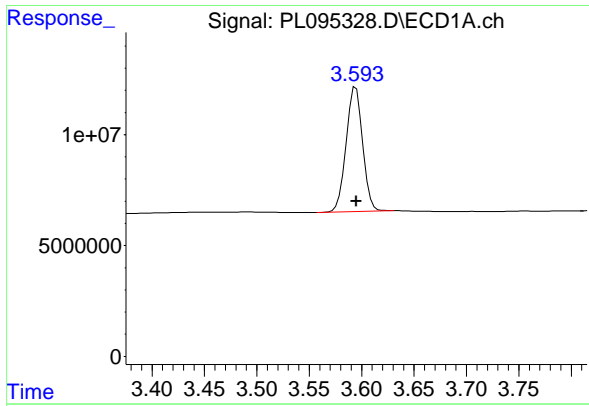
Manual Integrations
APPROVED

Reviewed By :Abdul Mirza 04/24/2025
 Supervised By :mohammad ahmed 04/26/2025

Integration File signal 1: autoint1.e
 Integration File signal 2: autoint2.e
 Quant Time: Apr 23 14:09:41 2025
 Quant Method : Z:\pestpcbsrv\HPCHEM1\ECD_L\methods\PL042325.M
 Quant Title : GC Extractables
 QLast Update : Wed Apr 23 14:07:39 2025
 Response via : Initial Calibration
 Integrator: ChemStation

Volume Inj. : 1 µl
 Signal #1 Phase : ZB-MR1 Signal #2 Phase: ZB-MR2
 Signal #1 Info : 30M x 0.32mm x0.5 Signal #2 Info : 30M x 0.32mm x0.25µm





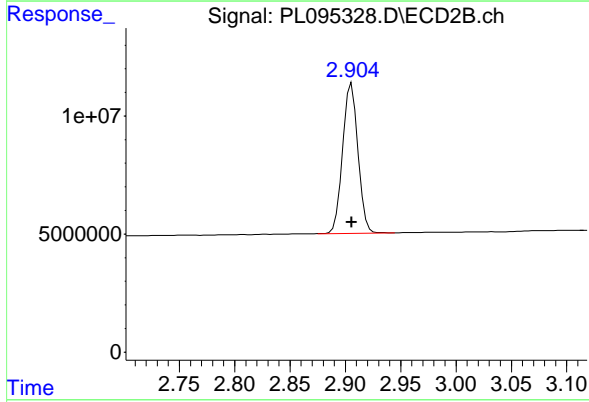
#1 Tetrachloro-m-xylene

R.T.: 3.594 min
 Delta R.T.: 0.000 min
 Response: 62004694
 Conc: 18.99 ng/ml

Instrument :
 ECD_L
 Client SampleId :
 RESCHK

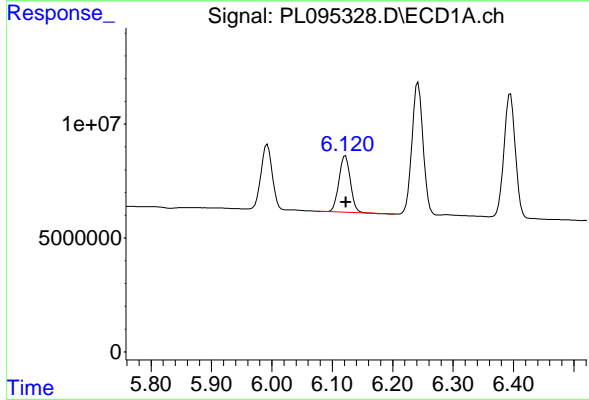
Manual Integrations
 APPROVED

Reviewed By :Abdul Mirza 04/24/2025
 Supervised By :mohammad ahmed 04/26/2025



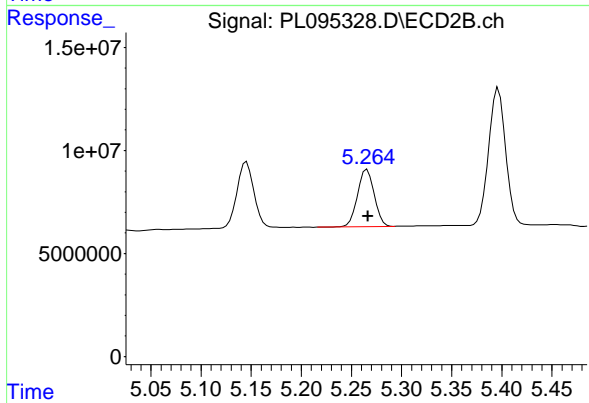
#1 Tetrachloro-m-xylene

R.T.: 2.906 min
 Delta R.T.: 0.000 min
 Response: 61272348
 Conc: 19.27 ng/ml



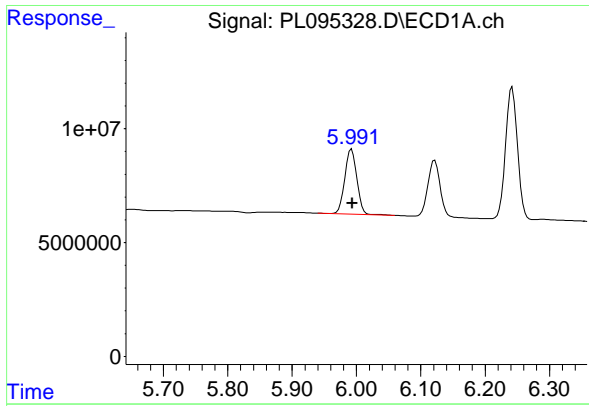
#9 Endosulfan I

R.T.: 6.122 min
 Delta R.T.: 0.000 min
 Response: 32613312
 Conc: 8.59 ng/ml



#9 Endosulfan I

R.T.: 5.266 min
 Delta R.T.: 0.000 min
 Response: 32263148
 Conc: 8.81 ng/ml



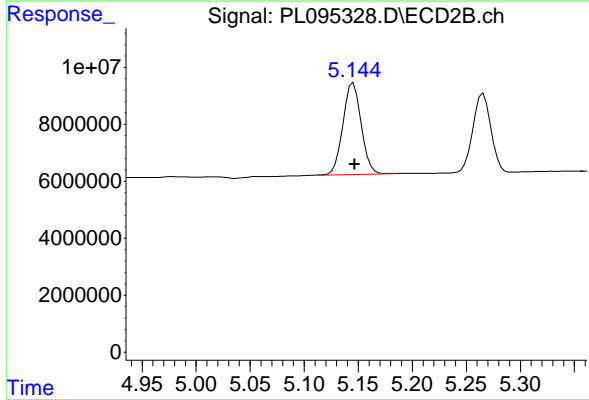
#10 gamma-Chlordane

R.T.: 5.992 min
 Delta R.T.: -0.001 min
 Response: 37114775
 Conc: 9.10 ng/ml

Instrument :
 ECD_L
 ClientSampleId :
 RESCHK

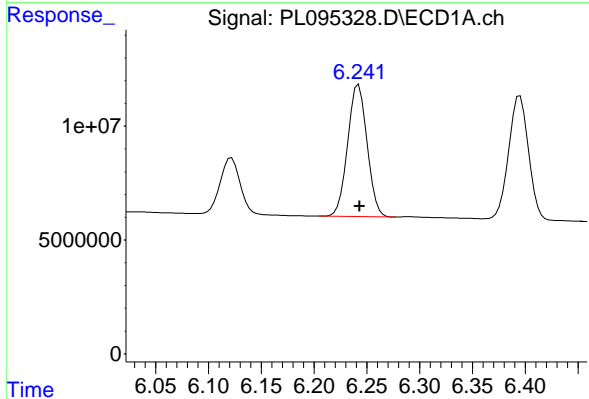
Manual Integrations
 APPROVED

Reviewed By :Abdul Mirza 04/24/2025
 Supervised By :mohammad ahmed 04/26/2025



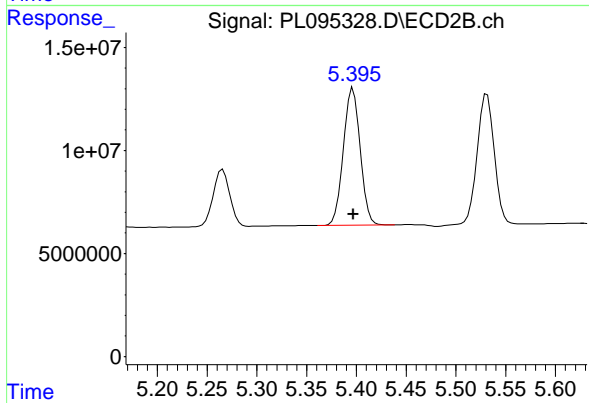
#10 gamma-Chlordane

R.T.: 5.144 min
 Delta R.T.: -0.003 min
 Response: 37866092
 Conc: 9.34 ng/ml m



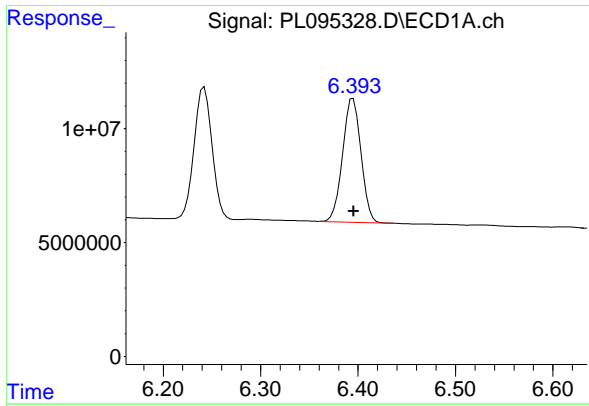
#12 4,4'-DDE

R.T.: 6.242 min
 Delta R.T.: 0.000 min
 Response: 74307748
 Conc: 18.95 ng/ml



#12 4,4'-DDE

R.T.: 5.397 min
 Delta R.T.: 0.000 min
 Response: 78460494
 Conc: 19.29 ng/ml



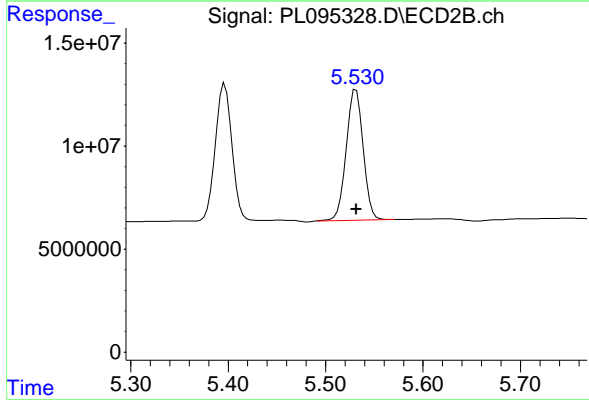
#13 Dieldrin

R.T.: 6.395 min
 Delta R.T.: 0.000 min
 Response: 71017950
 Conc: 18.42 ng/ml

Instrument :
 ECD_L
 ClientSampleId :
 RESCHK

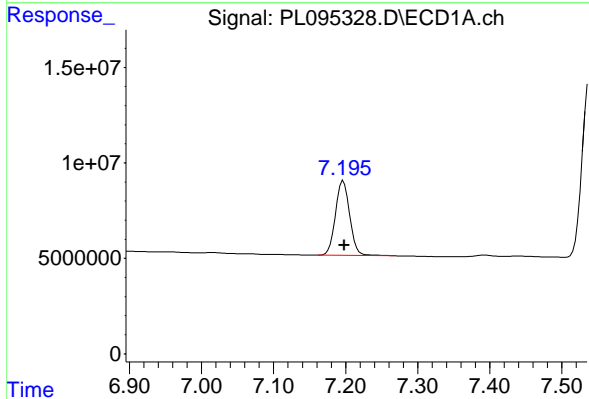
Manual Integrations
 APPROVED

Reviewed By :Abdul Mirza 04/24/2025
 Supervised By :mohammad ahmed 04/26/2025



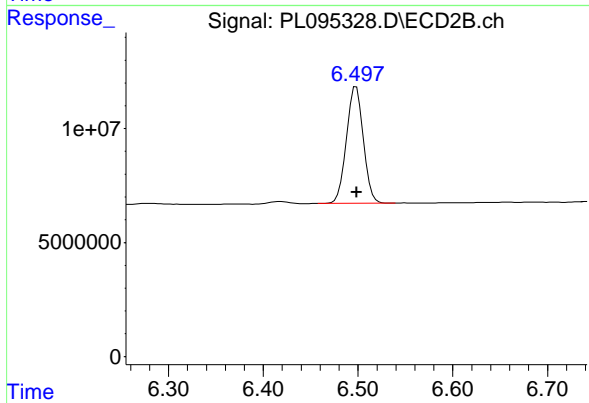
#13 Dieldrin

R.T.: 5.531 min
 Delta R.T.: 0.000 min
 Response: 76605618
 Conc: 18.84 ng/ml



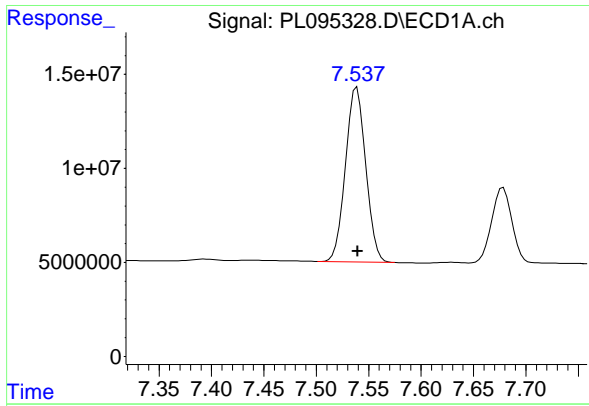
#19 Endosulfan Sulfate

R.T.: 7.197 min
 Delta R.T.: -0.001 min
 Response: 53082691
 Conc: 18.95 ng/ml



#19 Endosulfan Sulfate

R.T.: 6.498 min
 Delta R.T.: 0.000 min
 Response: 63329750
 Conc: 19.09 ng/ml



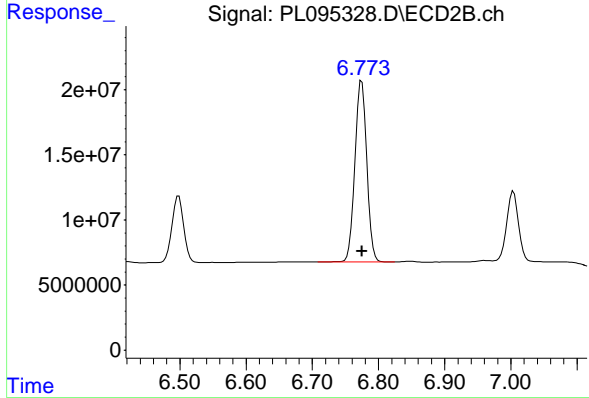
#20 Methoxychlor

R.T.: 7.539 min
 Delta R.T.: 0.000 min
 Response: 125791271
 Conc: 90.16 ng/ml

Instrument :
 ECD_L
 ClientSampleId :
 RESCHK

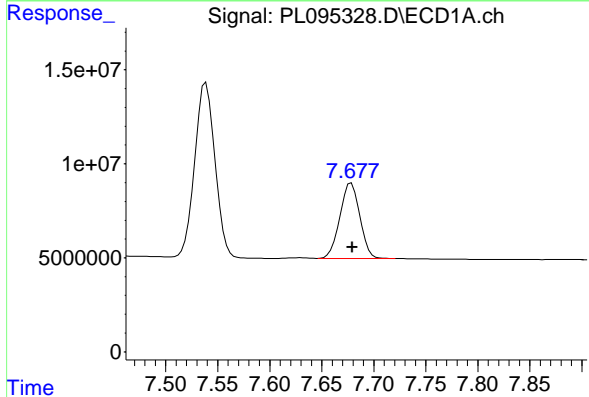
Manual Integrations
 APPROVED

Reviewed By :Abdul Mirza 04/24/2025
 Supervised By :mohammad ahmed 04/26/2025



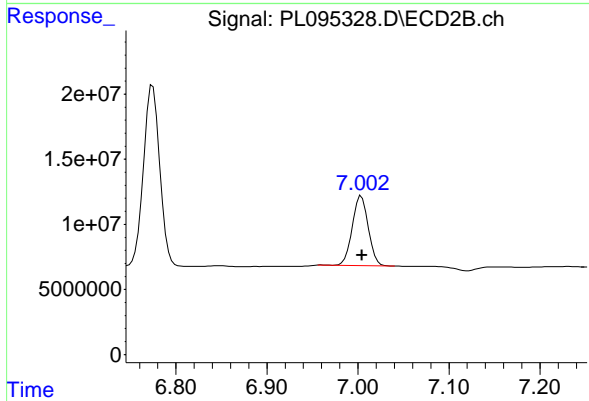
#20 Methoxychlor

R.T.: 6.775 min
 Delta R.T.: 0.000 min
 Response: 173224939
 Conc: 90.82 ng/ml



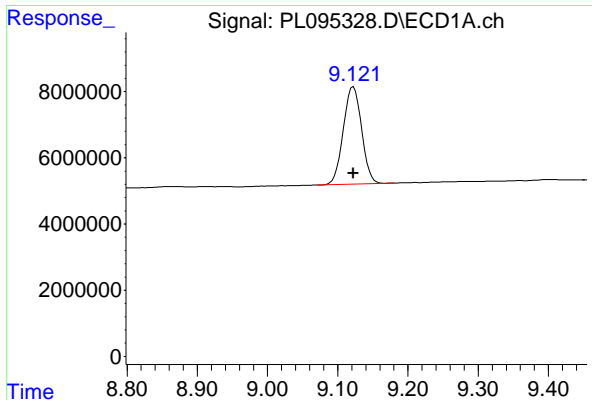
#21 Endrin ketone

R.T.: 7.678 min
 Delta R.T.: 0.000 min
 Response: 53522821
 Conc: 18.77 ng/ml



#21 Endrin ketone

R.T.: 7.004 min
 Delta R.T.: 0.000 min
 Response: 65934818
 Conc: 18.72 ng/ml



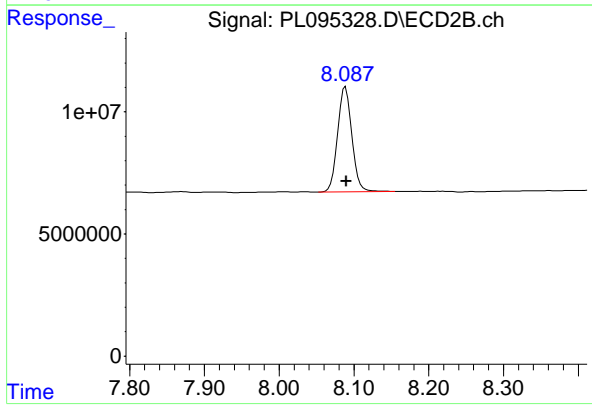
#28 Decachlorobiphenyl

R.T.: 9.122 min
 Delta R.T.: 0.000 min
 Response: 53403082
 Conc: 19.27 ng/ml

Instrument : ECD_L
 ClientSampleId : RESCHK

Manual Integrations
 APPROVED

Reviewed By :Abdul Mirza 04/24/2025
 Supervised By :mohammad ahmed 04/26/2025



#28 Decachlorobiphenyl

R.T.: 8.089 min
 Delta R.T.: 0.000 min
 Response: 56912207
 Conc: 19.23 ng/ml