

Data Path : Z:\pestpcbsrv\HPCHEM1\ECD\_L\Data\PL042325\  
 Data File : PL095329.D  
 Signal(s) : Signal #1: ECD1A.ch Signal #2: ECD2B.ch  
 Acq On : 23 Apr 2025 11:31  
 Operator : AR\AJ  
 Sample : PSTDICC100  
 Misc :  
 ALS Vial : 5 Sample Multiplier: 1

Instrument :  
 ECD\_L  
 ClientSampleId :  
 PSTDICC100

Integration File signal 1: autoint1.e  
 Integration File signal 2: autoint2.e  
 Quant Time: Apr 23 12:29:23 2025  
 Quant Method : Z:\pestpcbsrv\HPCHEM1\ECD\_L\methods\PL042325.M  
 Quant Title : GC Extractables  
 QLast Update : Wed Apr 23 12:26:08 2025  
 Response via : Initial Calibration  
 Integrator: ChemStation

Volume Inj. : 1 µl  
 Signal #1 Phase : ZB-MR2 Signal #2 Phase: ZB-MR2  
 Signal #1 Info : 30M x 0.32mm x0.5 Signal #2 Info : 30M x 0.32mm x0.25µm

Compound	RT#1	RT#2	Resp#1	Resp#2	ng/ml	ng/ml
-----						
System Monitoring Compounds						
1) SA Tetrachlo...	3.595	2.906	323.5E6	320.7E6	101.790	102.817
28) SA Decachlor...	9.123	8.089	264.7E6	301.3E6	100.076	103.321
Target Compounds						
2) A alpha-BHC	4.046	3.416	515.1E6	473.7E6	103.792	104.863
3) MA gamma-BHC...	4.378	3.750	485.6E6	463.2E6	103.261	104.552
4) MA Heptachlor	4.976	4.105	456.9E6	449.7E6	102.135	103.955
5) MB Aldrin	5.318	4.390	464.8E6	433.6E6	102.724	104.889
6) B beta-BHC	4.563	4.043	202.2E6	206.8E6	101.434	103.103
7) B delta-BHC	4.812	4.280	473.8E6	464.9E6	103.426	104.943
8) B Heptachlo...	5.739	4.893	398.8E6	396.9E6	102.405	103.927
9) A Endosulfan I	6.122	5.266	377.0E6	380.8E6	101.944	104.252
10) B gamma-Chl...	5.993	5.146	412.4E6	422.8E6	102.723	105.067
11) B alpha-Chl...	6.074	5.210	407.7E6	413.4E6	102.396	104.665
12) B 4,4'-DDE	6.243	5.397	392.7E6	425.9E6	102.522	104.850
13) MA Dieldrin	6.395	5.532	390.7E6	423.6E6	103.009	105.151
14) MA Endrin	6.623	5.807	318.1E6	380.1E6	102.435	104.689
15) B Endosulfa...	6.835	6.097	312.8E6	369.8E6	102.050	104.436
16) A 4,4'-DDD	6.753	5.949	286.5E6	345.1E6	102.830	105.531
17) MA 4,4'-DDT	7.068	6.204	290.3E6	367.0E6	102.525	105.654
18) B Endrin al...	6.964	6.275	227.7E6	267.5E6	101.318	103.921
19) B Endosulfa...	7.197	6.498	274.5E6	339.2E6	101.424	103.912
20) A Methoxychlor	7.540	6.775	135.2E6	191.8E6	100.822	102.846
21) B Endrin ke...	7.679	7.004	280.8E6	362.9E6	101.609	103.924
22) Mirex	8.161	7.201	221.4E6	287.9E6	99.567	102.890

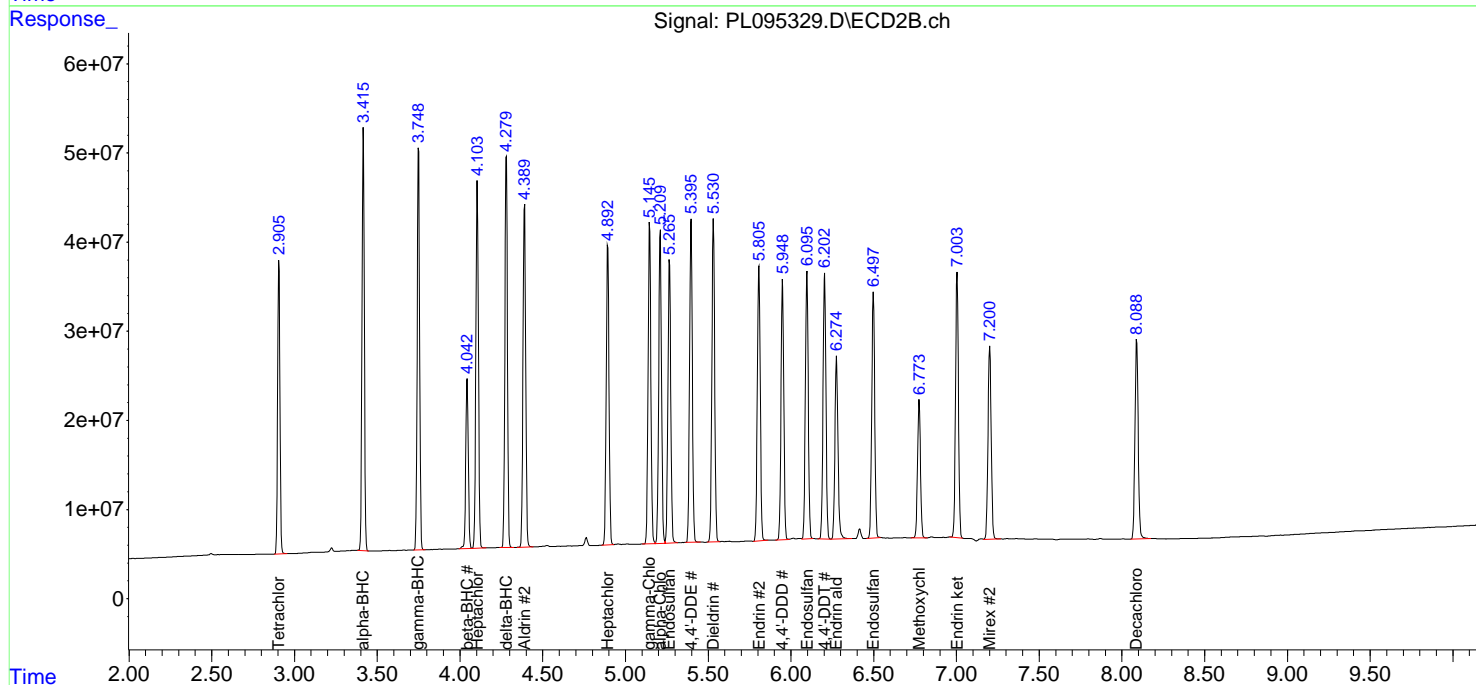
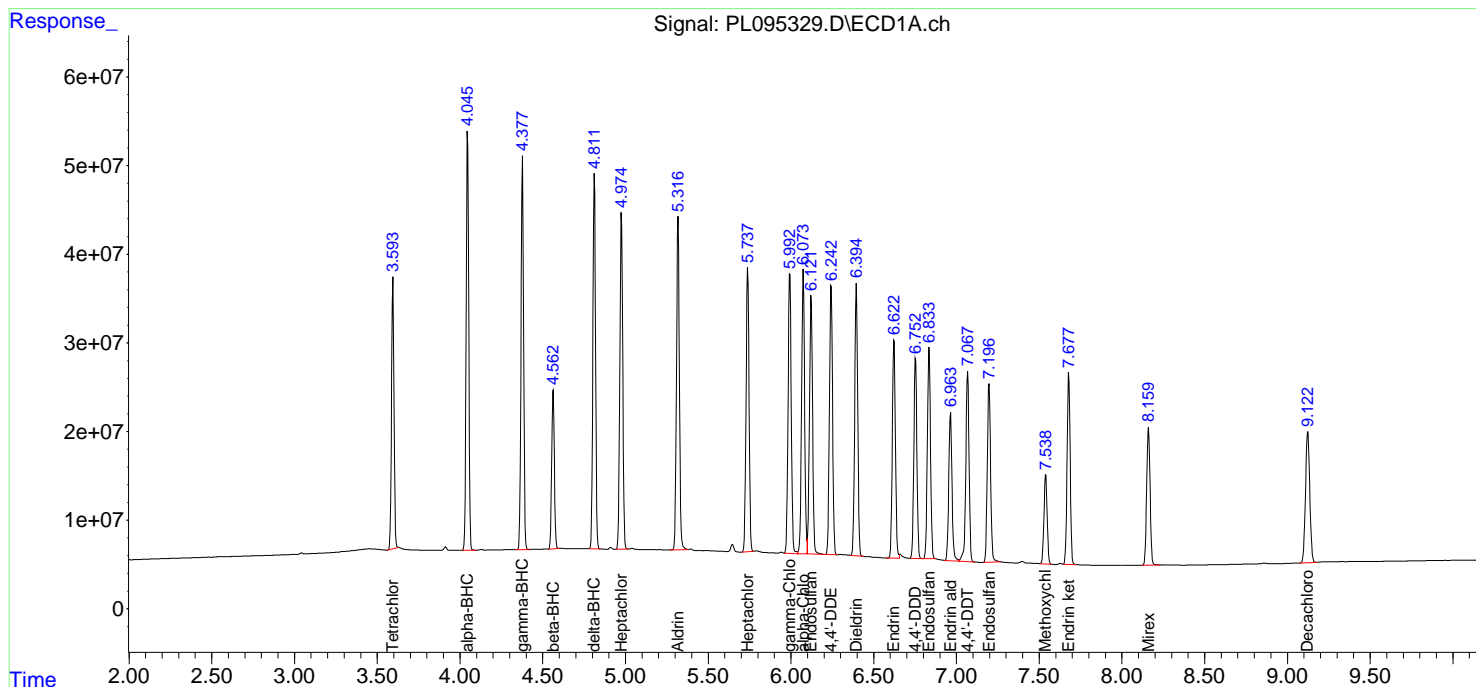
(f)=RT Delta > 1/2 Window (#)=Amounts differ by > 25% (m)=manual int.

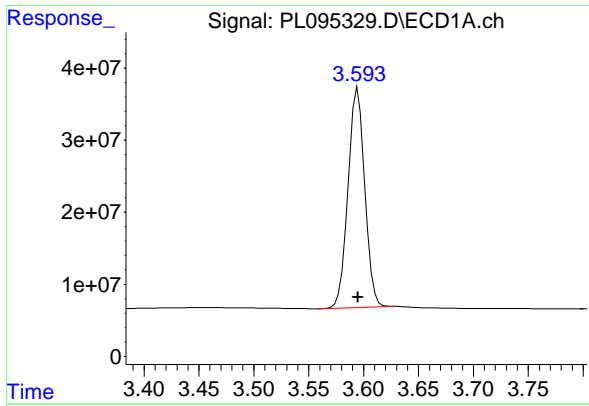
Data Path : Z:\pestpcbsrv\HPCHEM1\ECD\_L\Data\PL042325\  
 Data File : PL095329.D  
 Signal(s) : Signal #1: ECD1A.ch Signal #2: ECD2B.ch  
 Acq On : 23 Apr 2025 11:31  
 Operator : AR\AJ  
 Sample : PSTDICC100  
 Misc :  
 ALS Vial : 5 Sample Multiplier: 1

Instrument :  
 ECD\_L  
 ClientSampleId :  
 PSTDICC100

Integration File signal 1: autoint1.e  
 Integration File signal 2: autoint2.e  
 Quant Time: Apr 23 12:29:23 2025  
 Quant Method : Z:\pestpcbsrv\HPCHEM1\ECD\_L\methods\PL042325.M  
 Quant Title : GC Extractables  
 QLast Update : Wed Apr 23 12:26:08 2025  
 Response via : Initial Calibration  
 Integrator: ChemStation

Volume Inj. : 1 µl  
 Signal #1 Phase : ZB-MR1 Signal #2 Phase: ZB-MR2  
 Signal #1 Info : 30M x 0.32mm x0.5 Signal #2 Info : 30M x 0.32mm x0.25µm

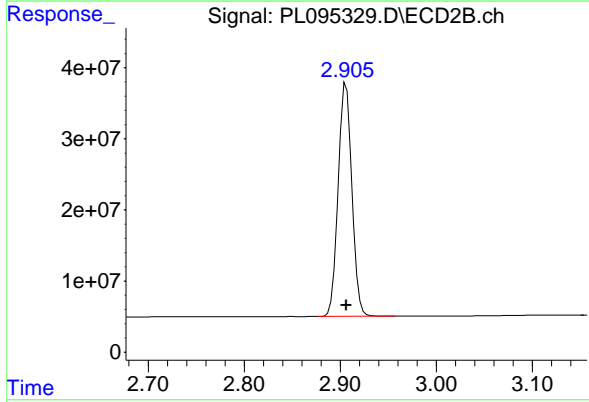




#1 Tetrachloro-m-xylene

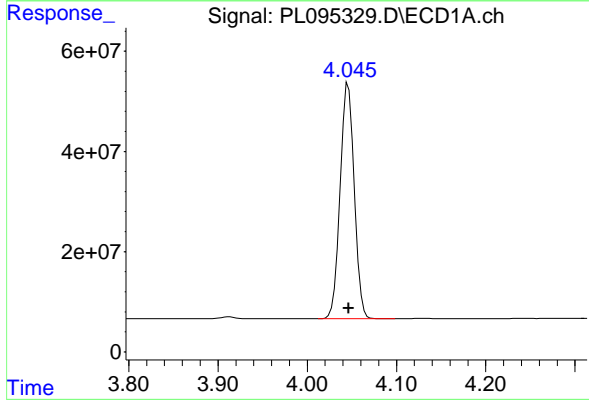
R.T.: 3.595 min  
 Delta R.T.: 0.000 min  
 Response: 323491125  
 Conc: 101.79 ng/ml

Instrument :  
 ECD\_L  
 ClientSampleId :  
 PSTDICC100



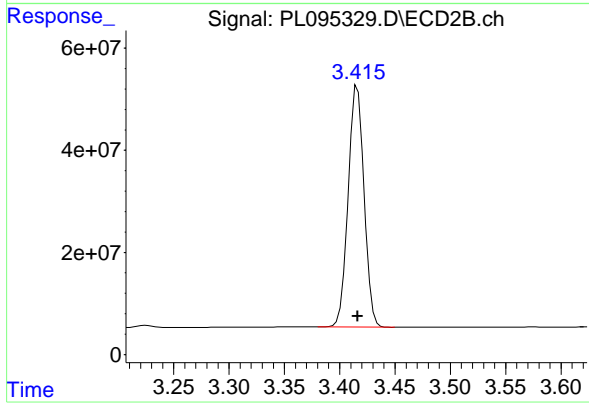
#1 Tetrachloro-m-xylene

R.T.: 2.906 min  
 Delta R.T.: 0.000 min  
 Response: 320661815  
 Conc: 102.82 ng/ml



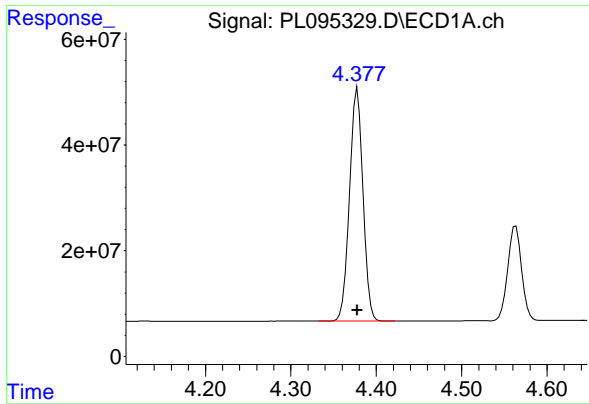
#2 alpha-BHC

R.T.: 4.046 min  
 Delta R.T.: 0.000 min  
 Response: 515070430  
 Conc: 103.79 ng/ml



#2 alpha-BHC

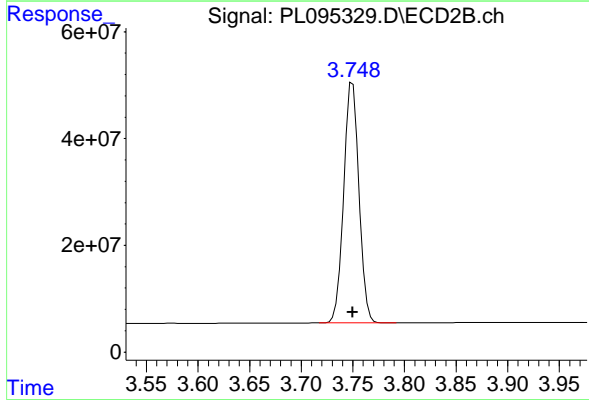
R.T.: 3.416 min  
 Delta R.T.: 0.000 min  
 Response: 473654475  
 Conc: 104.86 ng/ml



#3 gamma-BHC (Lindane)

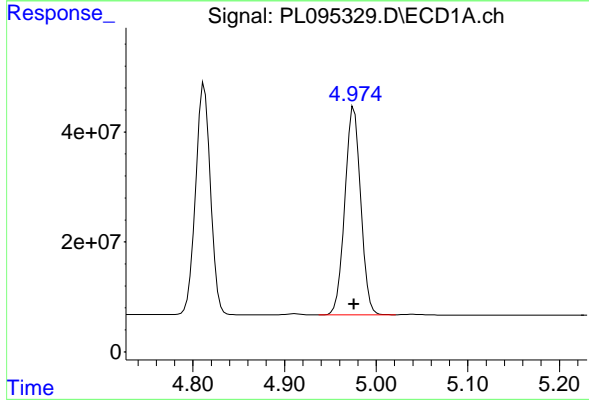
R.T.: 4.378 min  
 Delta R.T.: 0.000 min  
 Response: 485646578  
 Conc: 103.26 ng/ml

Instrument :  
 ECD\_L  
 ClientSampleId :  
 PSTDICC100



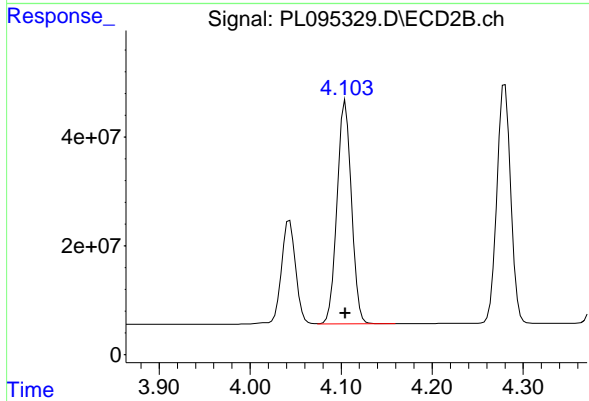
#3 gamma-BHC (Lindane)

R.T.: 3.750 min  
 Delta R.T.: 0.000 min  
 Response: 463168586  
 Conc: 104.55 ng/ml



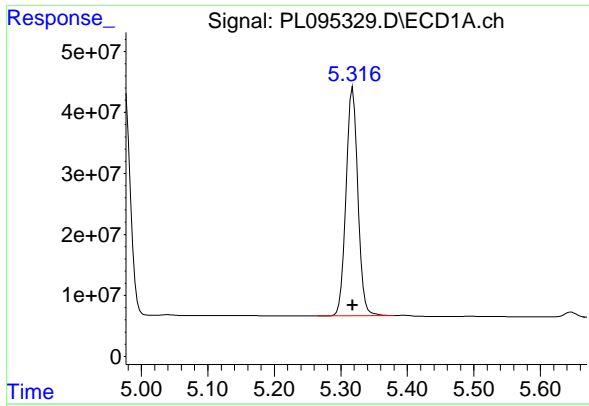
#4 Heptachlor

R.T.: 4.976 min  
 Delta R.T.: 0.000 min  
 Response: 456881987  
 Conc: 102.14 ng/ml



#4 Heptachlor

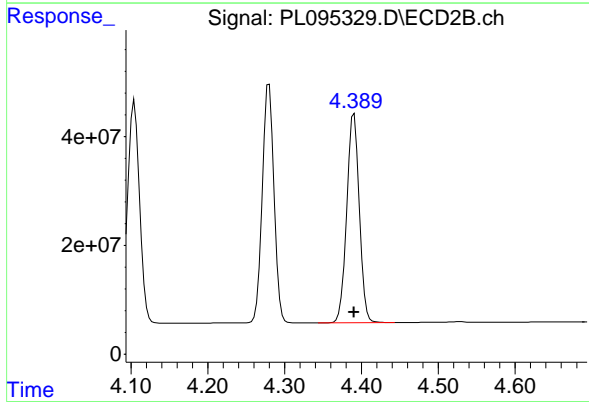
R.T.: 4.105 min  
 Delta R.T.: 0.000 min  
 Response: 449658556  
 Conc: 103.96 ng/ml



#5 Aldrin

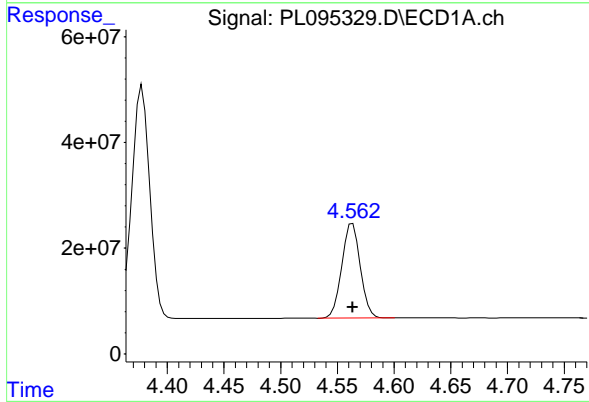
R.T.: 5.318 min  
 Delta R.T.: 0.000 min  
 Response: 464783691  
 Conc: 102.72 ng/ml

Instrument :  
 ECD\_L  
 ClientSampleId :  
 PSTDICC100



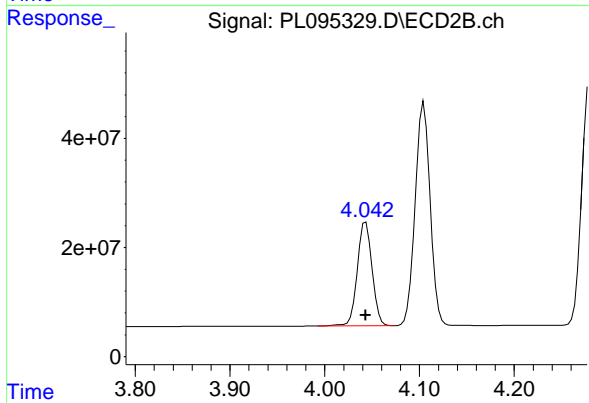
#5 Aldrin

R.T.: 4.390 min  
 Delta R.T.: 0.000 min  
 Response: 433622988  
 Conc: 104.89 ng/ml



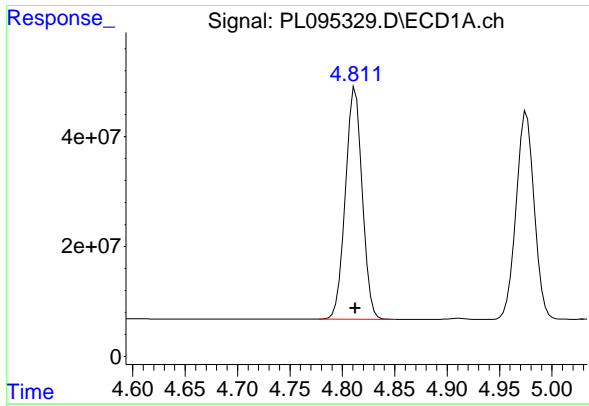
#6 beta-BHC

R.T.: 4.563 min  
 Delta R.T.: 0.000 min  
 Response: 202245248  
 Conc: 101.43 ng/ml



#6 beta-BHC

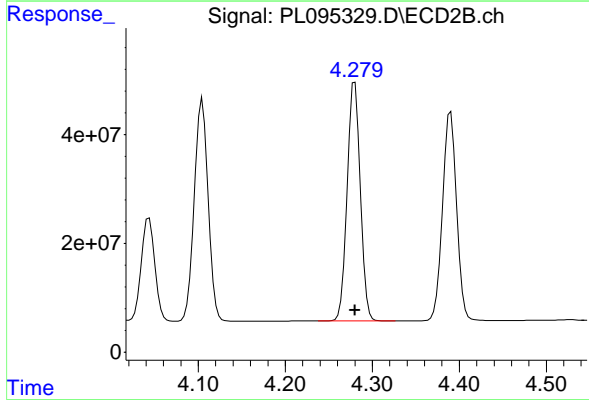
R.T.: 4.043 min  
 Delta R.T.: 0.000 min  
 Response: 206788694  
 Conc: 103.10 ng/ml



#7 delta-BHC

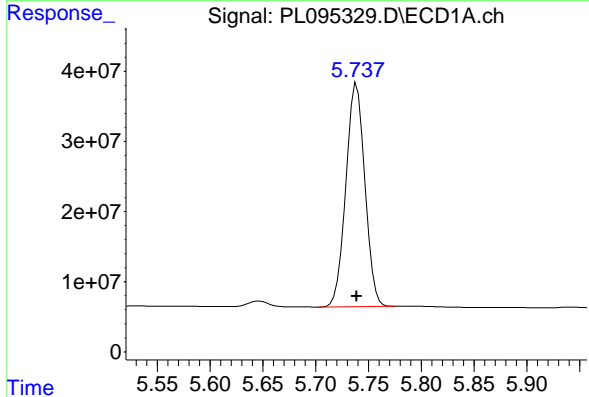
R.T.: 4.812 min  
 Delta R.T.: 0.000 min  
 Response: 473807061  
 Conc: 103.43 ng/ml

Instrument :  
 ECD\_L  
 ClientSampleId :  
 PSTDICC100



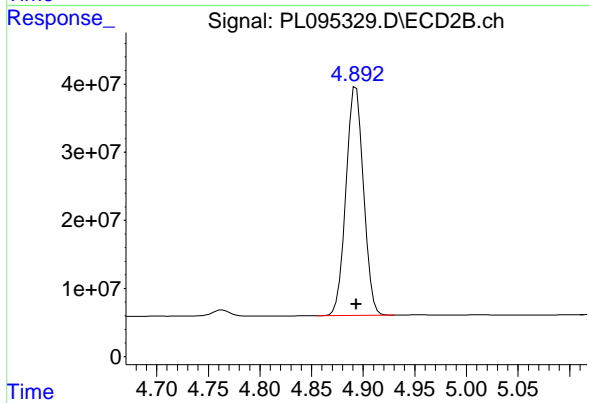
#7 delta-BHC

R.T.: 4.280 min  
 Delta R.T.: 0.000 min  
 Response: 464855530  
 Conc: 104.94 ng/ml



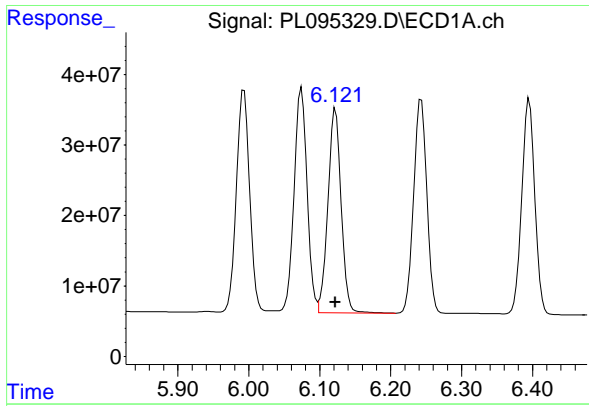
#8 Heptachlor epoxide

R.T.: 5.739 min  
 Delta R.T.: 0.000 min  
 Response: 398849731  
 Conc: 102.40 ng/ml



#8 Heptachlor epoxide

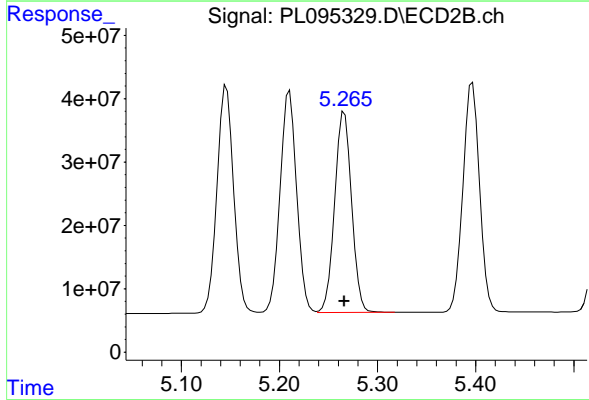
R.T.: 4.893 min  
 Delta R.T.: 0.000 min  
 Response: 396941132  
 Conc: 103.93 ng/ml



#9 Endosulfan I

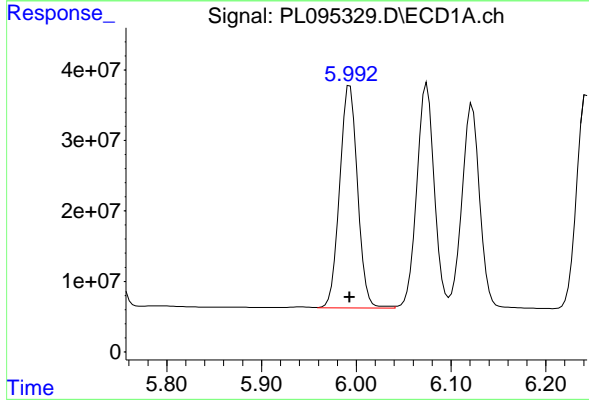
R.T.: 6.122 min  
 Delta R.T.: 0.000 min  
 Response: 377044280  
 Conc: 101.94 ng/ml

Instrument :  
 ECD\_L  
 ClientSampleId :  
 PSTDICC100



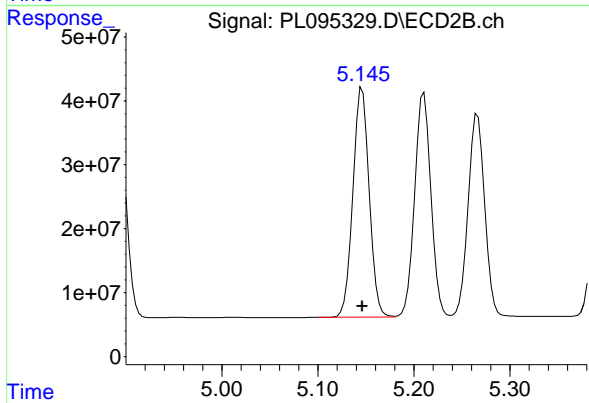
#9 Endosulfan I

R.T.: 5.266 min  
 Delta R.T.: 0.000 min  
 Response: 380773241  
 Conc: 104.25 ng/ml



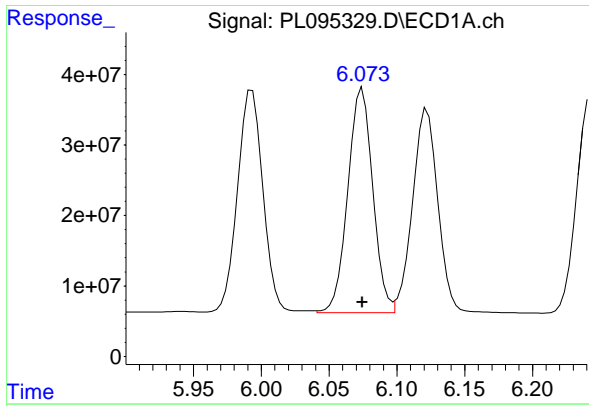
#10 gamma-Chlordane

R.T.: 5.993 min  
 Delta R.T.: 0.000 min  
 Response: 412419220  
 Conc: 102.72 ng/ml



#10 gamma-Chlordane

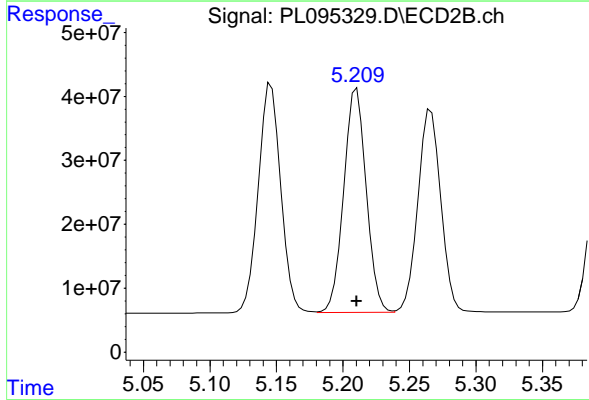
R.T.: 5.146 min  
 Delta R.T.: 0.000 min  
 Response: 422776294  
 Conc: 105.07 ng/ml



#11 alpha-Chlordane

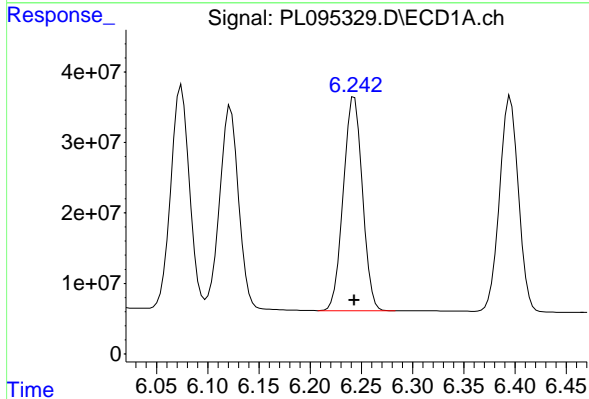
R.T.: 6.074 min  
 Delta R.T.: 0.000 min  
 Response: 407676371  
 Conc: 102.40 ng/ml

Instrument :  
 ECD\_L  
 ClientSampleId :  
 PSTDICC100



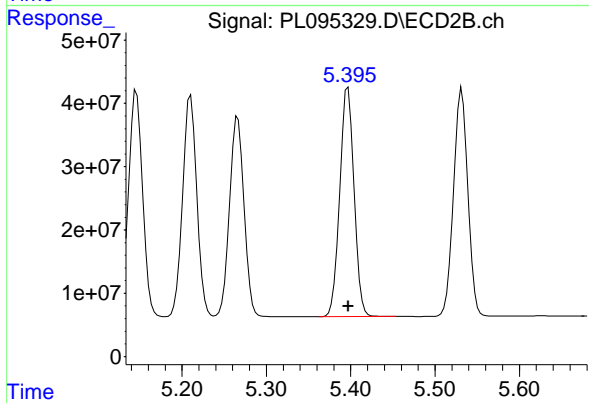
#11 alpha-Chlordane

R.T.: 5.210 min  
 Delta R.T.: 0.000 min  
 Response: 413362305  
 Conc: 104.67 ng/ml



#12 4,4'-DDE

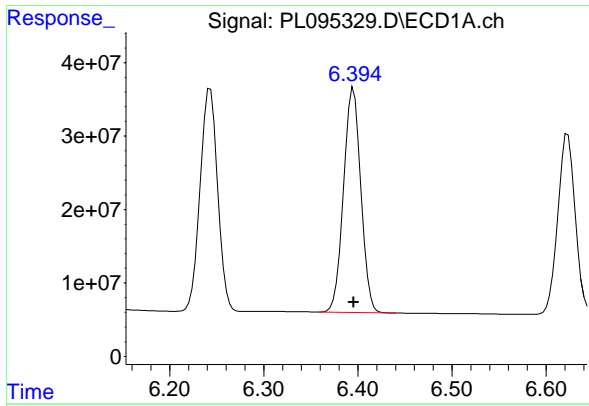
R.T.: 6.243 min  
 Delta R.T.: 0.000 min  
 Response: 392693208  
 Conc: 102.52 ng/ml



#12 4,4'-DDE

R.T.: 5.397 min  
 Delta R.T.: 0.000 min  
 Response: 425941388  
 Conc: 104.85 ng/ml

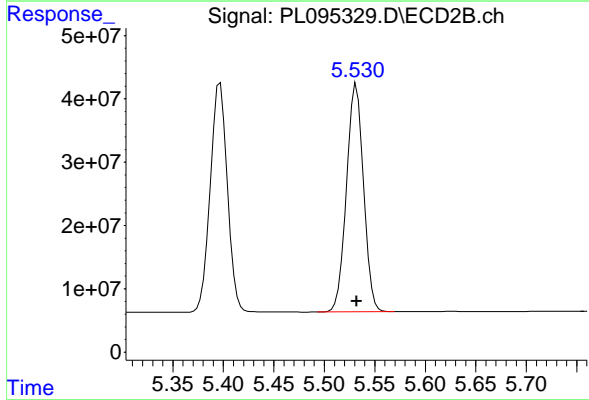




#13 Dieldrin

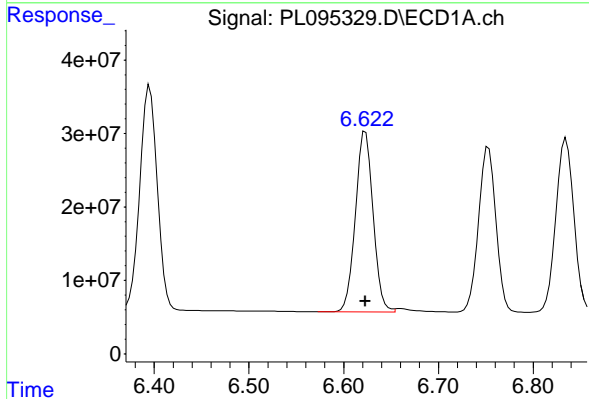
R.T.: 6.395 min  
 Delta R.T.: 0.000 min  
 Response: 390695114  
 Conc: 103.01 ng/ml

Instrument :  
 ECD\_L  
 ClientSampleId :  
 PSTDICC100



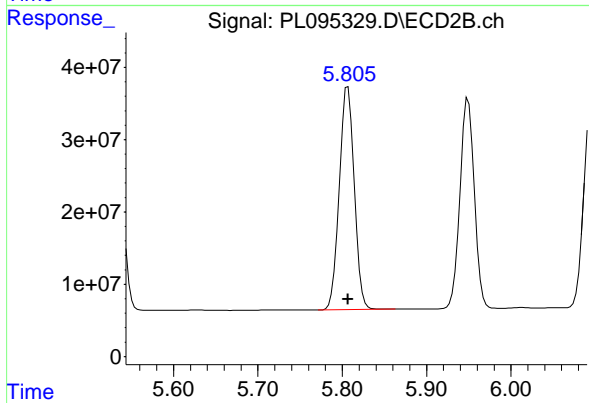
#13 Dieldrin

R.T.: 5.532 min  
 Delta R.T.: 0.000 min  
 Response: 423643266  
 Conc: 105.15 ng/ml



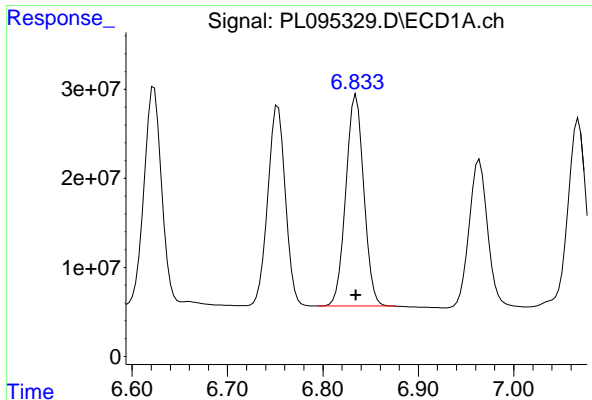
#14 Endrin

R.T.: 6.623 min  
 Delta R.T.: 0.000 min  
 Response: 318061123  
 Conc: 102.44 ng/ml



#14 Endrin

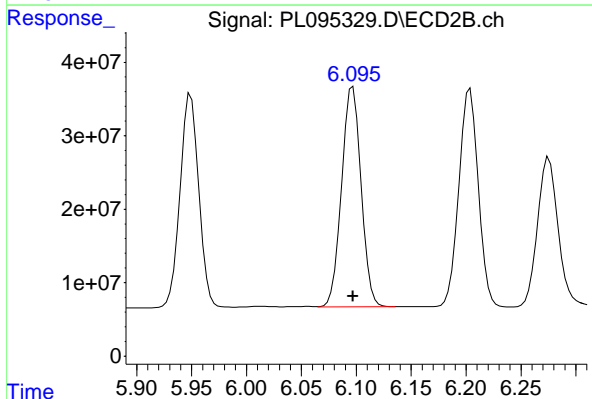
R.T.: 5.807 min  
 Delta R.T.: 0.000 min  
 Response: 380070631  
 Conc: 104.69 ng/ml



#15 Endosulfan II

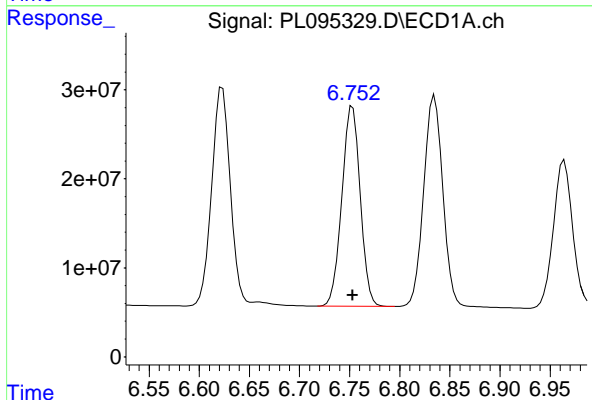
R.T.: 6.835 min  
 Delta R.T.: 0.000 min  
 Response: 312843730  
 Conc: 102.05 ng/ml

Instrument :  
 ECD\_L  
 ClientSampleId :  
 PSTDICC100



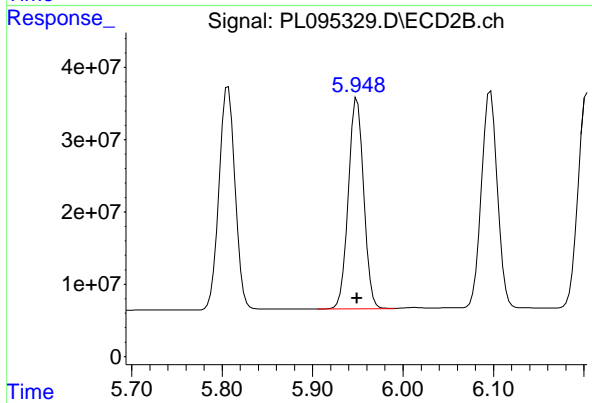
#15 Endosulfan II

R.T.: 6.097 min  
 Delta R.T.: 0.000 min  
 Response: 369804223  
 Conc: 104.44 ng/ml



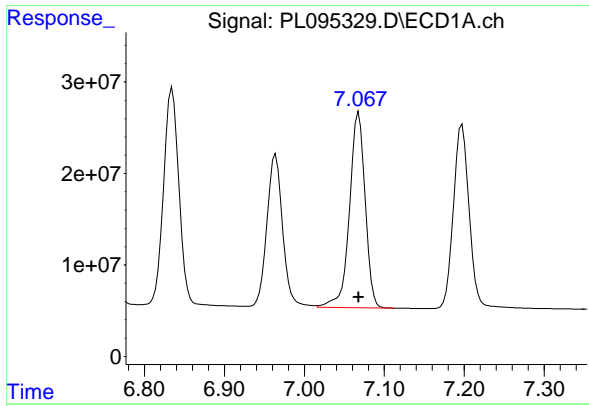
#16 4,4'-DDD

R.T.: 6.753 min  
 Delta R.T.: 0.000 min  
 Response: 286508080  
 Conc: 102.83 ng/ml



#16 4,4'-DDD

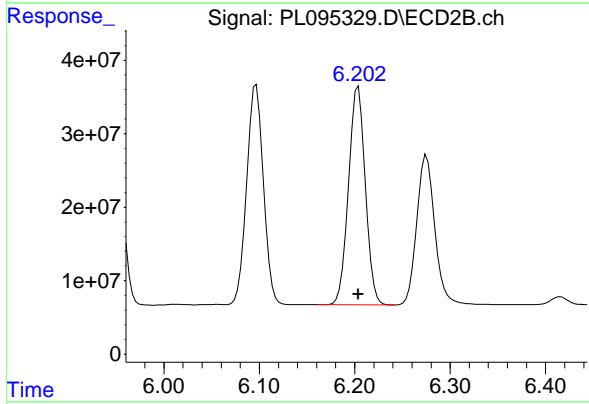
R.T.: 5.949 min  
 Delta R.T.: 0.000 min  
 Response: 345117468  
 Conc: 105.53 ng/ml



#17 4,4' -DDT

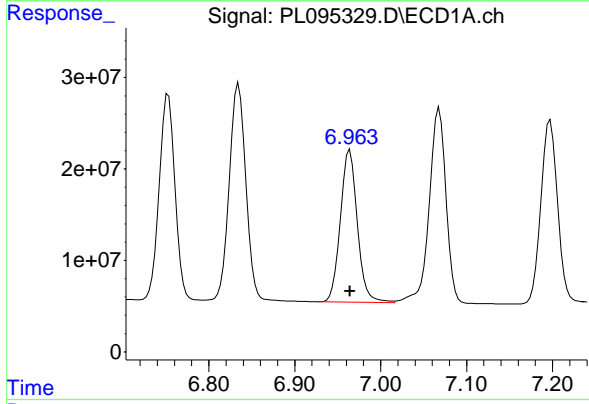
R.T.: 7.068 min  
 Delta R.T.: 0.000 min  
 Response: 290329287  
 Conc: 102.52 ng/ml

Instrument :  
 ECD\_L  
 ClientSampleId :  
 PSTDICC100



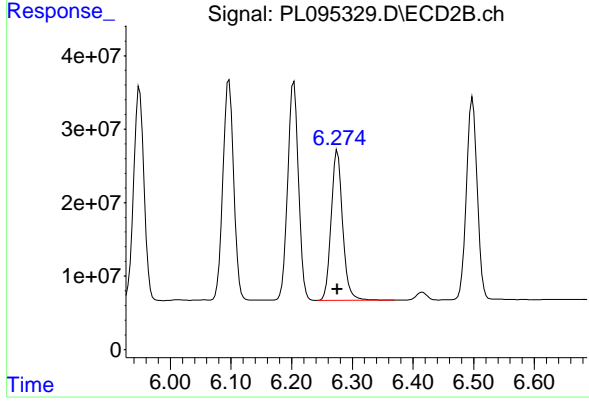
#17 4,4' -DDT

R.T.: 6.204 min  
 Delta R.T.: 0.000 min  
 Response: 367013697  
 Conc: 105.65 ng/ml



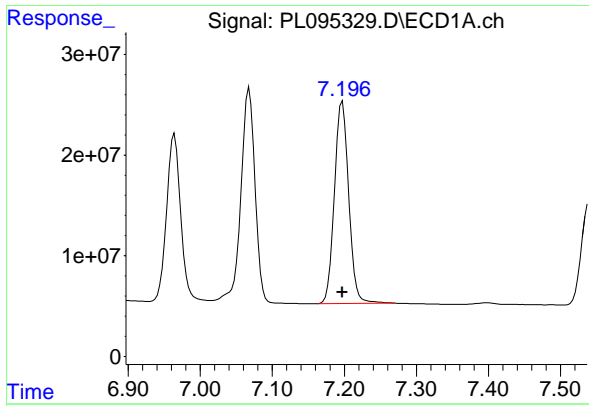
#18 Endrin aldehyde

R.T.: 6.964 min  
 Delta R.T.: 0.000 min  
 Response: 227678358  
 Conc: 101.32 ng/ml



#18 Endrin aldehyde

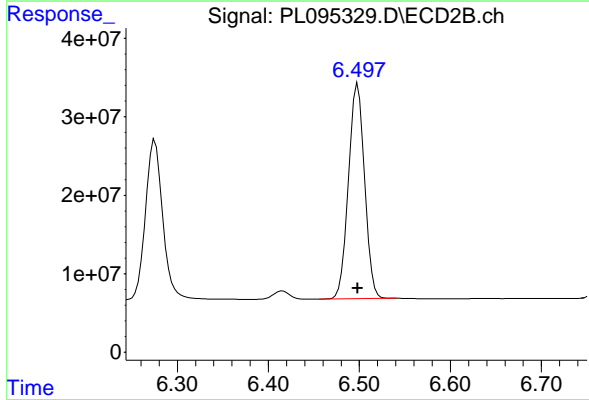
R.T.: 6.275 min  
 Delta R.T.: 0.000 min  
 Response: 267469083  
 Conc: 103.92 ng/ml



#19 Endosulfan Sulfate

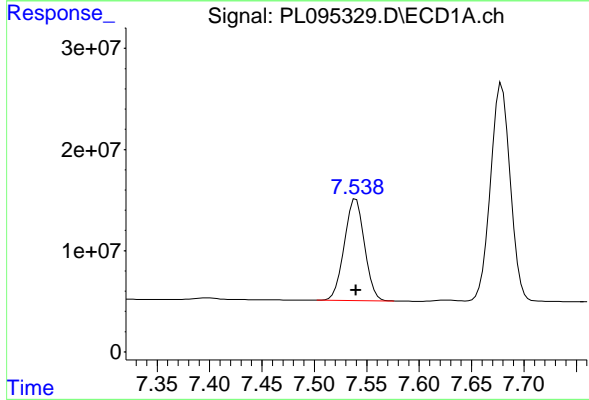
R.T.: 7.197 min  
 Delta R.T.: 0.000 min  
 Response: 274542350  
 Conc: 101.42 ng/ml

Instrument :  
 ECD\_L  
 ClientSampleId :  
 PSTDICC100



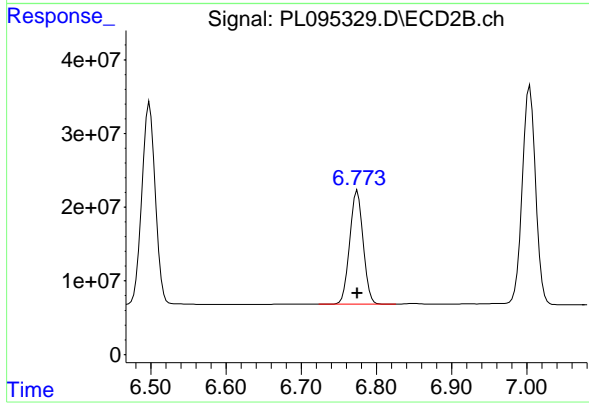
#19 Endosulfan Sulfate

R.T.: 6.498 min  
 Delta R.T.: 0.000 min  
 Response: 339248929  
 Conc: 103.91 ng/ml



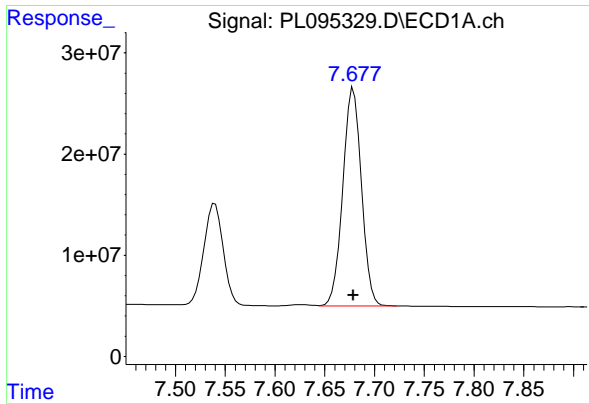
#20 Methoxychlor

R.T.: 7.540 min  
 Delta R.T.: 0.000 min  
 Response: 135217513  
 Conc: 100.82 ng/ml



#20 Methoxychlor

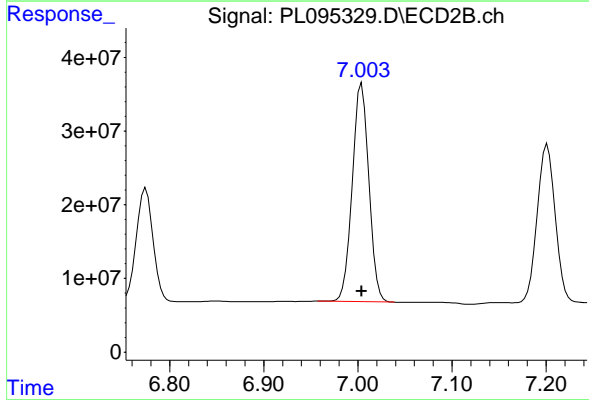
R.T.: 6.775 min  
 Delta R.T.: 0.000 min  
 Response: 191790122  
 Conc: 102.85 ng/ml



#21 Endrin ketone

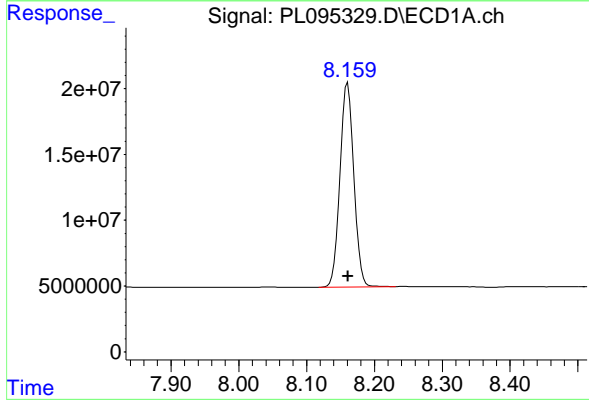
R.T.: 7.679 min  
 Delta R.T.: 0.000 min  
 Response: 280815373  
 Conc: 101.61 ng/ml

Instrument :  
 ECD\_L  
 ClientSampleId :  
 PSTDICC100



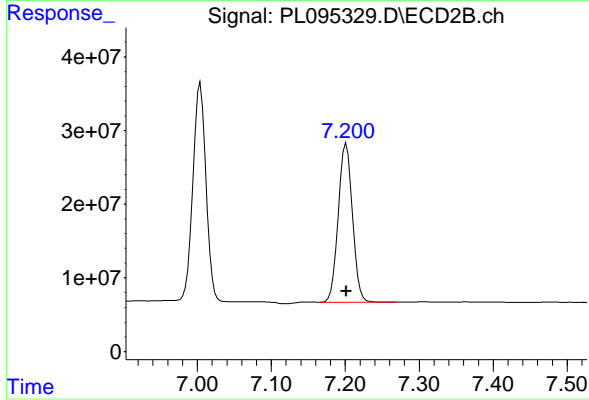
#21 Endrin ketone

R.T.: 7.004 min  
 Delta R.T.: 0.000 min  
 Response: 362885097  
 Conc: 103.92 ng/ml



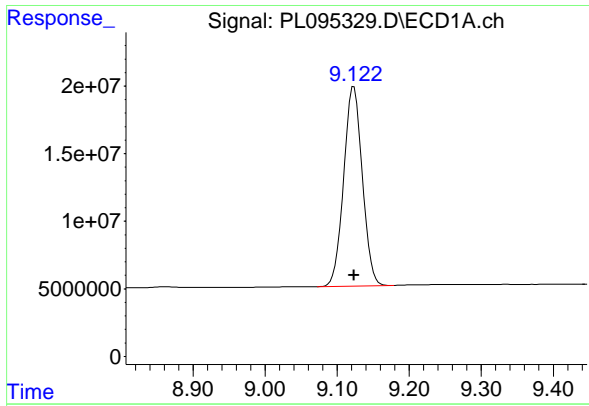
#22 Mirex

R.T.: 8.161 min  
 Delta R.T.: 0.000 min  
 Response: 221403941  
 Conc: 99.57 ng/ml



#22 Mirex

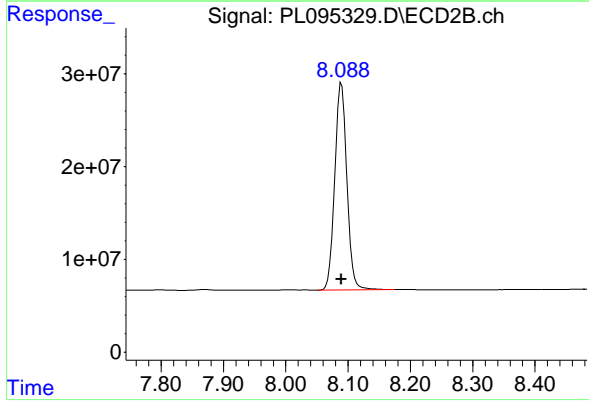
R.T.: 7.201 min  
 Delta R.T.: 0.000 min  
 Response: 287854160  
 Conc: 102.89 ng/ml



#28 Decachlorobiphenyl

R.T.: 9.123 min  
Delta R.T.: 0.000 min  
Response: 264726652  
Conc: 100.08 ng/ml

Instrument :  
ECD\_L  
ClientSampleId :  
PSTDICC100



#28 Decachlorobiphenyl

R.T.: 8.089 min  
Delta R.T.: 0.000 min  
Response: 301292757  
Conc: 103.32 ng/ml