

Data Path : Z:\pestpcbsrv\HPCHEM1\ECD_L\Data\PL042325\
 Data File : PL095330.D
 Signal(s) : Signal #1: ECD1A.ch Signal #2: ECD2B.ch
 Acq On : 23 Apr 2025 11:45
 Operator : AR\AJ
 Sample : PSTDICC075
 Misc :
 ALS Vial : 6 Sample Multiplier: 1

Instrument :
 ECD_L
 ClientSampleId :
 PSTDICC075

Integration File signal 1: autoint1.e
 Integration File signal 2: autoint2.e
 Quant Time: Apr 23 12:31:20 2025
 Quant Method : Z:\pestpcbsrv\HPCHEM1\ECD_L\methods\PL042325.M
 Quant Title : GC Extractables
 QLast Update : Wed Apr 23 12:26:08 2025
 Response via : Initial Calibration
 Integrator: ChemStation

Volume Inj. : 1 µl
 Signal #1 Phase : ZB-MR2 Signal #2 Phase: ZB-MR2
 Signal #1 Info : 30M x 0.32mm x0.5 Signal #2 Info : 30M x 0.32mm x0.25µm

Compound	RT#1	RT#2	Resp#1	Resp#2	ng/ml	ng/ml

System Monitoring Compounds						
1) SA Tetrachlo...	3.595	2.906	242.3E6	234.0E6	75.826	75.013
28) SA Decachlor...	9.123	8.090	198.2E6	210.4E6	74.960	73.074
Target Compounds						
2) A alpha-BHC	4.047	3.417	379.9E6	338.8E6	76.029	75.000
3) MA gamma-BHC...	4.378	3.750	358.9E6	331.2E6	75.876	74.842
4) MA Heptachlor	4.977	4.105	339.9E6	321.3E6	75.653	74.520
5) MB Aldrin	5.318	4.390	344.0E6	308.3E6	75.679	74.716
6) B beta-BHC	4.564	4.044	151.2E6	149.5E6	75.563	74.688
7) B delta-BHC	4.813	4.281	347.5E6	330.3E6	75.566	74.710
8) B Heptachlo...	5.740	4.894	295.1E6	281.9E6	75.505	74.194
9) A Endosulfan I	6.123	5.267	280.7E6	267.1E6	75.588	73.735
10) B gamma-Chl...	5.993	5.147	304.4E6	294.6E6	75.551	73.793
11) B alpha-Chl...	6.075	5.211	302.3E6	289.7E6	75.612	73.893
12) B 4,4'-DDE	6.243	5.398	289.8E6	297.5E6	75.443	73.806
13) MA Dieldrin	6.396	5.532	288.2E6	297.4E6	75.657	74.204
14) MA Endrin	6.623	5.807	235.1E6	265.9E6	75.482	73.827
15) B Endosulfa...	6.836	6.097	232.8E6	260.1E6	75.616	73.960
16) A 4,4'-DDD	6.753	5.949	211.5E6	239.6E6	75.605	73.829
17) MA 4,4'-DDT	7.069	6.204	214.9E6	253.3E6	75.596	73.601
18) B Endrin al...	6.965	6.276	169.6E6	189.1E6	75.319	73.986
19) B Endosulfa...	7.199	6.498	204.8E6	238.7E6	75.438	73.741
20) A Methoxychlor	7.540	6.775	101.2E6	135.4E6	75.314	73.393
21) B Endrin ke...	7.680	7.005	208.9E6	256.0E6	75.397	73.872
22) Mirex	8.161	7.202	167.3E6	202.6E6	75.145	73.247

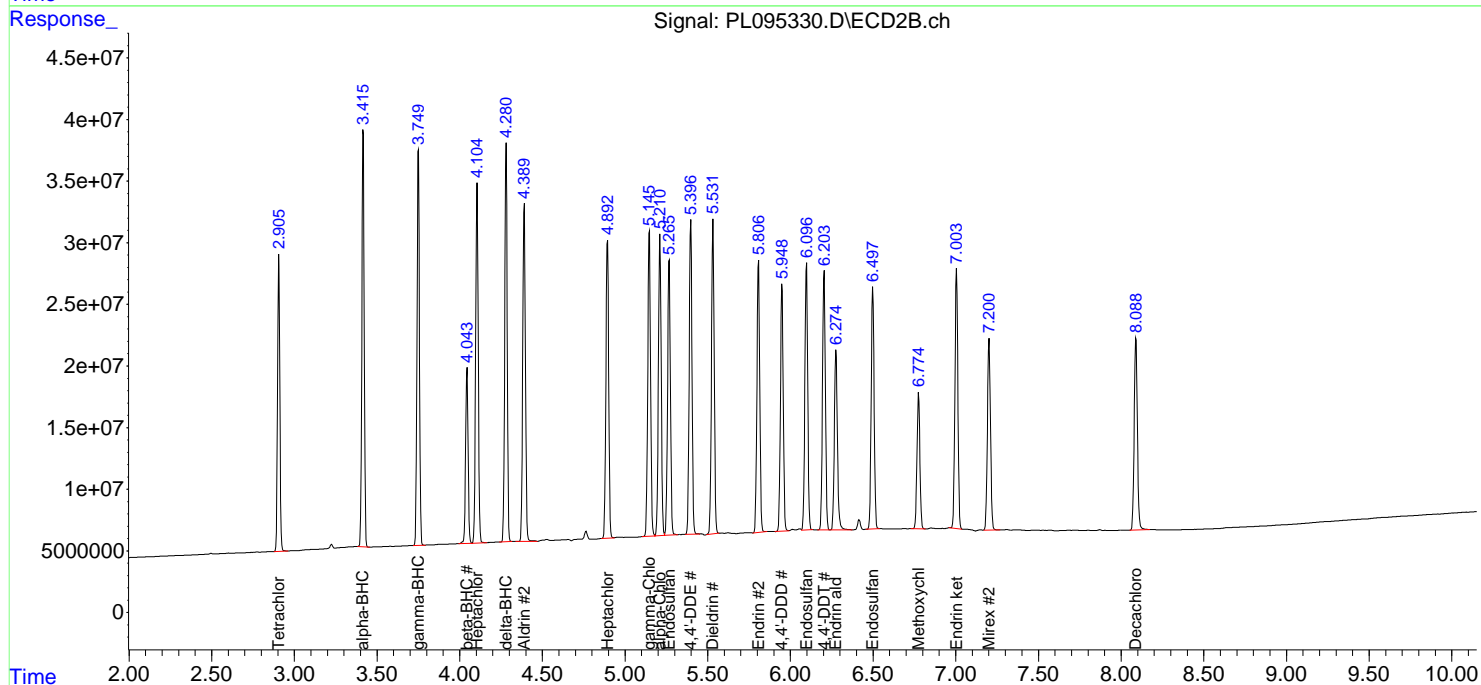
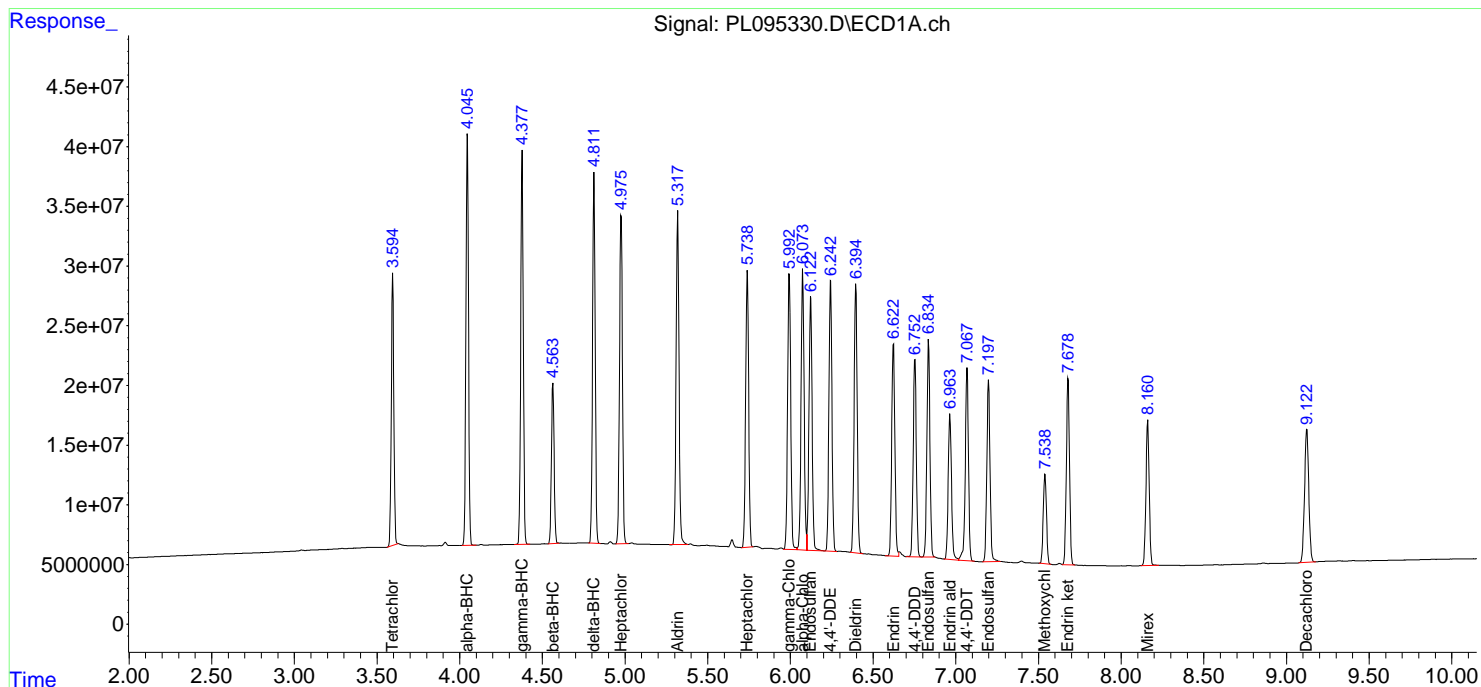
(f)=RT Delta > 1/2 Window (#)=Amounts differ by > 25% (m)=manual int.

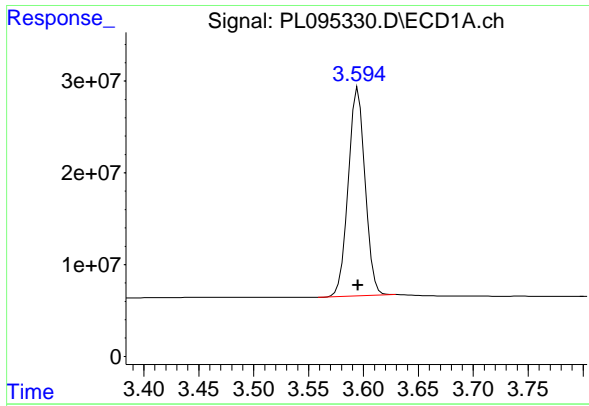
Data Path : Z:\pestpcbsrv\HPCHEM1\ECD_L\Data\PL042325\
 Data File : PL095330.D
 Signal(s) : Signal #1: ECD1A.ch Signal #2: ECD2B.ch
 Acq On : 23 Apr 2025 11:45
 Operator : AR\AJ
 Sample : PSTDICC075
 Misc :
 ALS Vial : 6 Sample Multiplier: 1

Instrument :
 ECD_L
 ClientSampleId :
 PSTDICC075

Integration File signal 1: autoint1.e
 Integration File signal 2: autoint2.e
 Quant Time: Apr 23 12:31:20 2025
 Quant Method : Z:\pestpcbsrv\HPCHEM1\ECD_L\methods\PL042325.M
 Quant Title : GC Extractables
 QLast Update : Wed Apr 23 12:26:08 2025
 Response via : Initial Calibration
 Integrator: ChemStation

Volume Inj. : 1 µl
 Signal #1 Phase : ZB-MR1 Signal #2 Phase: ZB-MR2
 Signal #1 Info : 30M x 0.32mm x0.5 Signal #2 Info : 30M x 0.32mm x0.25µm

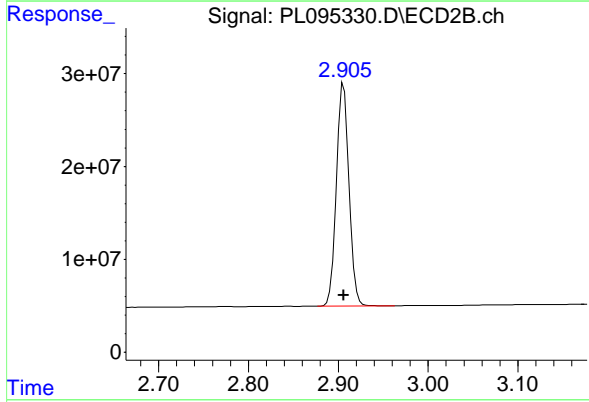




#1 Tetrachloro-m-xylene

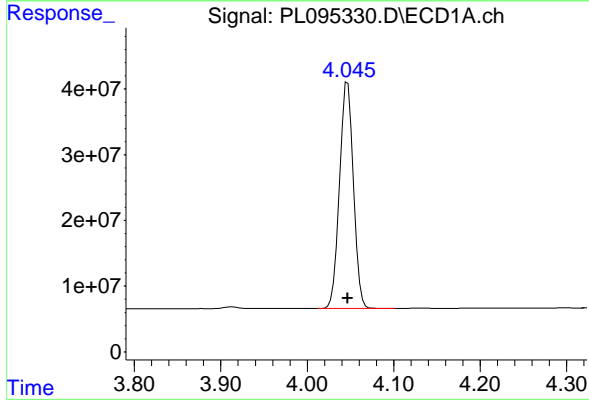
R.T.: 3.595 min
 Delta R.T.: 0.000 min
 Response: 242312702
 Conc: 75.83 ng/ml

Instrument :
 ECD_L
 ClientSampleId :
 PSTDICC075



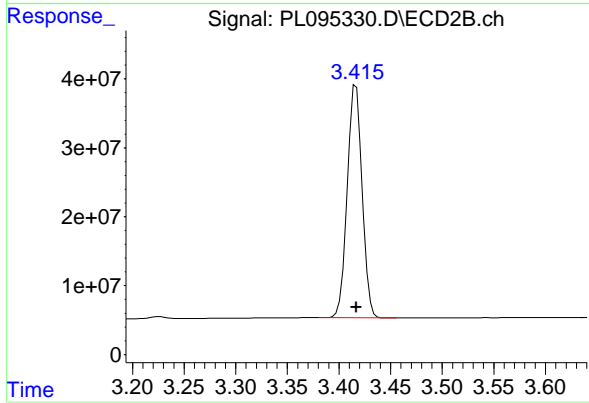
#1 Tetrachloro-m-xylene

R.T.: 2.906 min
 Delta R.T.: 0.000 min
 Response: 233967541
 Conc: 75.01 ng/ml



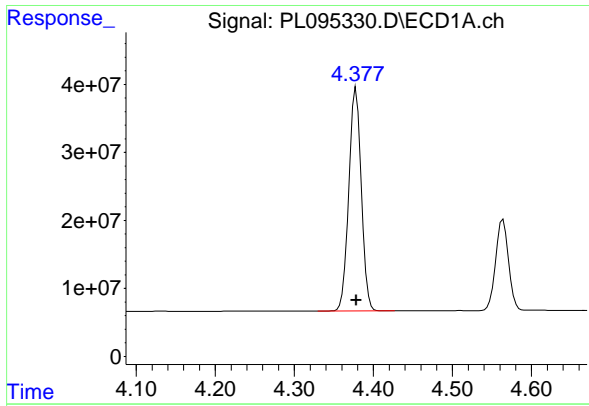
#2 alpha-BHC

R.T.: 4.047 min
 Delta R.T.: 0.000 min
 Response: 379898801
 Conc: 76.03 ng/ml



#2 alpha-BHC

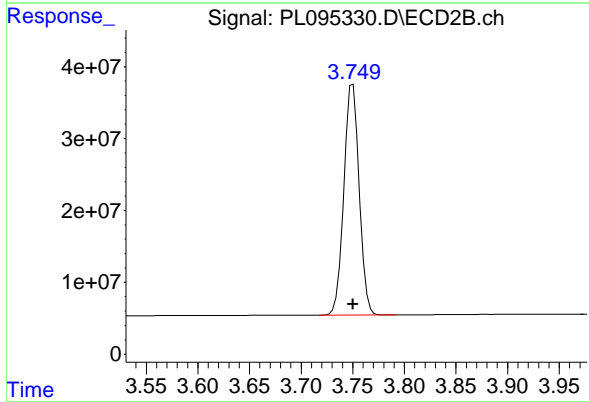
R.T.: 3.417 min
 Delta R.T.: 0.000 min
 Response: 338763617
 Conc: 75.00 ng/ml



#3 gamma-BHC (Lindane)

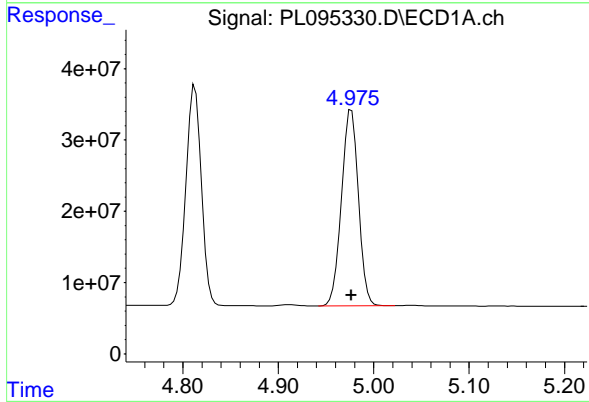
R.T.: 4.378 min
 Delta R.T.: 0.000 min
 Response: 358949956
 Conc: 75.88 ng/ml

Instrument :
 ECD_L
 ClientSampleId :
 PSTDICC075



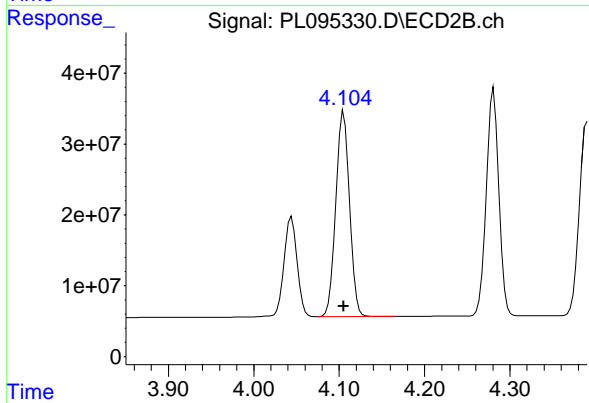
#3 gamma-BHC (Lindane)

R.T.: 3.750 min
 Delta R.T.: 0.000 min
 Response: 331207321
 Conc: 74.84 ng/ml



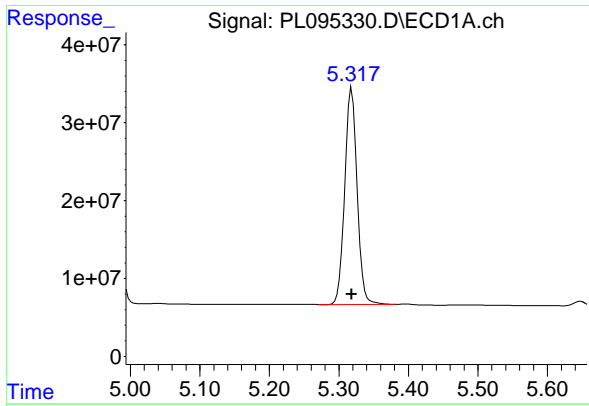
#4 Heptachlor

R.T.: 4.977 min
 Delta R.T.: 0.000 min
 Response: 339898397
 Conc: 75.65 ng/ml



#4 Heptachlor

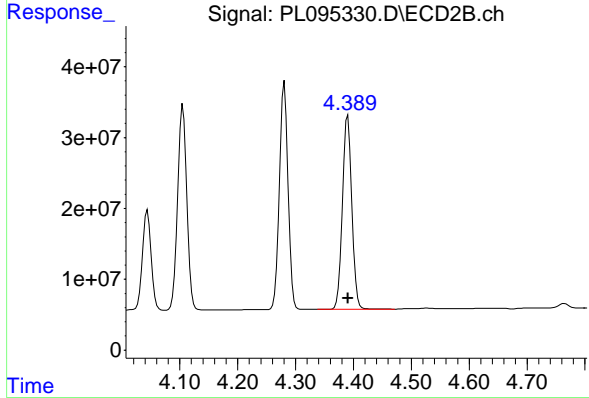
R.T.: 4.105 min
 Delta R.T.: 0.000 min
 Response: 321310520
 Conc: 74.52 ng/ml



#5 Aldrin

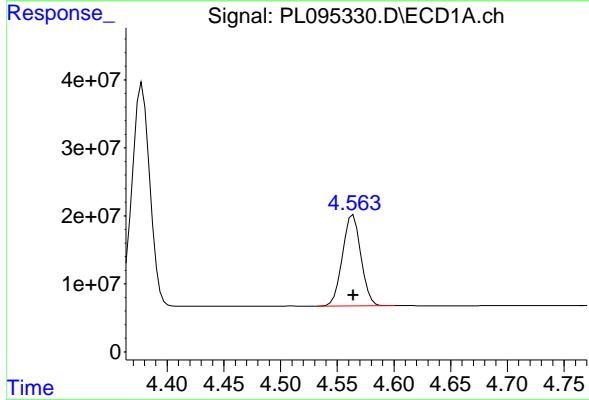
R.T.: 5.318 min
 Delta R.T.: 0.000 min
 Response: 343969506
 Conc: 75.68 ng/ml

Instrument :
 ECD_L
 ClientSampleId :
 PSTDICC075



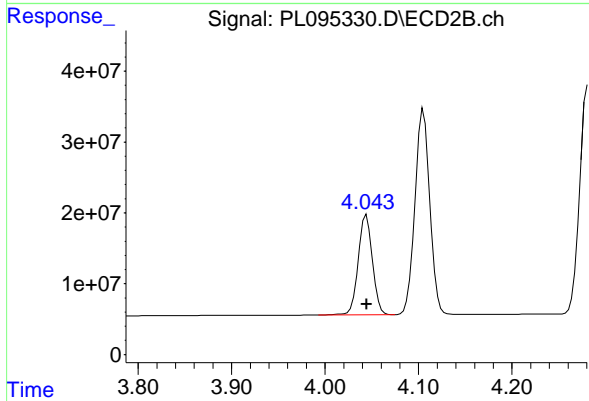
#5 Aldrin

R.T.: 4.390 min
 Delta R.T.: 0.000 min
 Response: 308300056
 Conc: 74.72 ng/ml



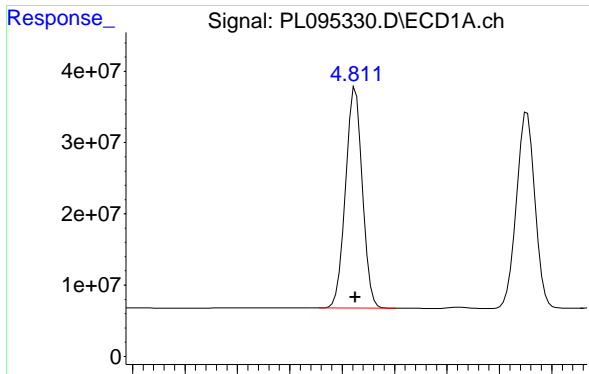
#6 beta-BHC

R.T.: 4.564 min
 Delta R.T.: 0.000 min
 Response: 151230250
 Conc: 75.56 ng/ml



#6 beta-BHC

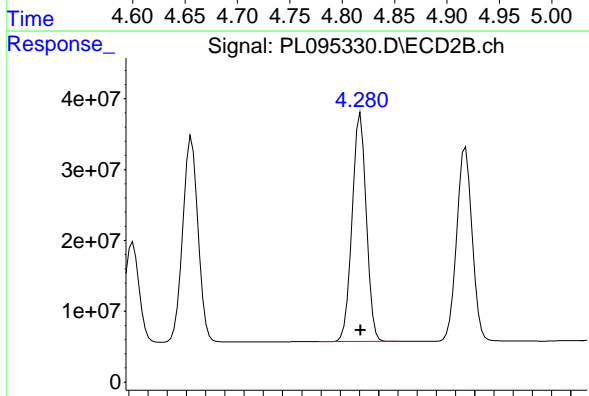
R.T.: 4.044 min
 Delta R.T.: 0.000 min
 Response: 149486612
 Conc: 74.69 ng/ml



#7 delta-BHC

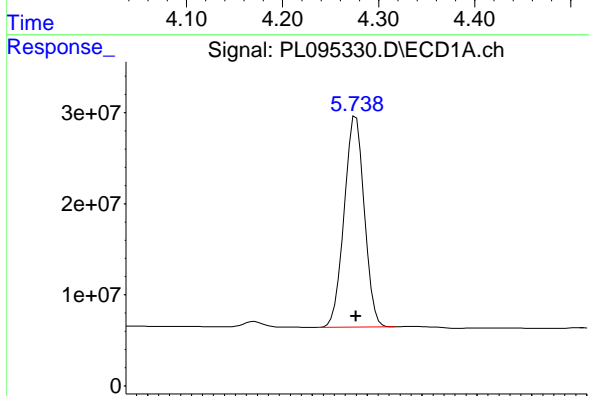
R.T.: 4.813 min
Delta R.T.: 0.000 min
Response: 347489339
Conc: 75.57 ng/ml

Instrument :
ECD_L
ClientSampleId :
PSTDICC075



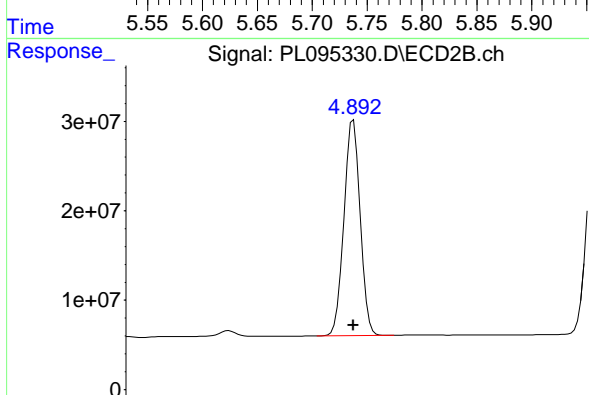
#7 delta-BHC

R.T.: 4.281 min
Delta R.T.: 0.000 min
Response: 330298127
Conc: 74.71 ng/ml



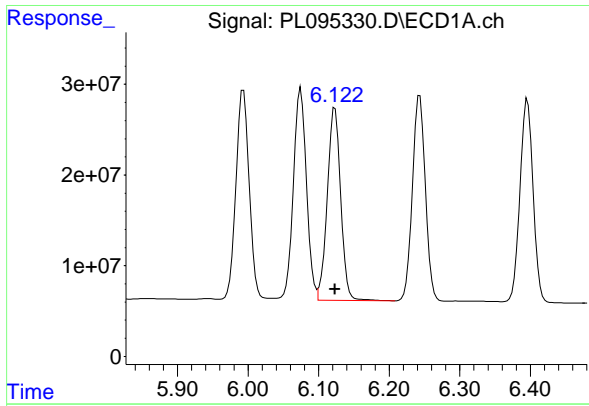
#8 Heptachlor epoxide

R.T.: 5.740 min
Delta R.T.: 0.000 min
Response: 295075873
Conc: 75.51 ng/ml



#8 Heptachlor epoxide

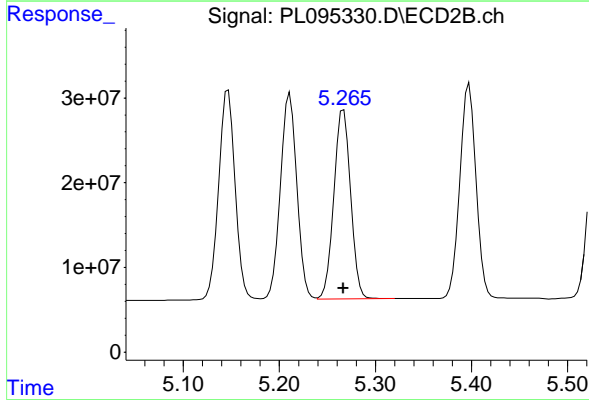
R.T.: 4.894 min
Delta R.T.: 0.000 min
Response: 281865797
Conc: 74.19 ng/ml



#9 Endosulfan I

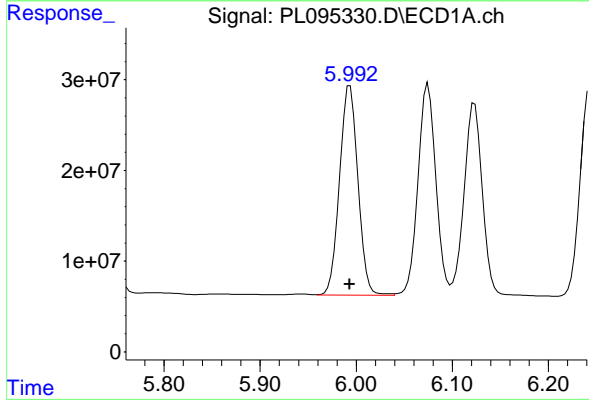
R.T.: 6.123 min
 Delta R.T.: 0.000 min
 Response: 280667118
 Conc: 75.59 ng/ml

Instrument :
 ECD_L
 ClientSampleId :
 PSTDICC075



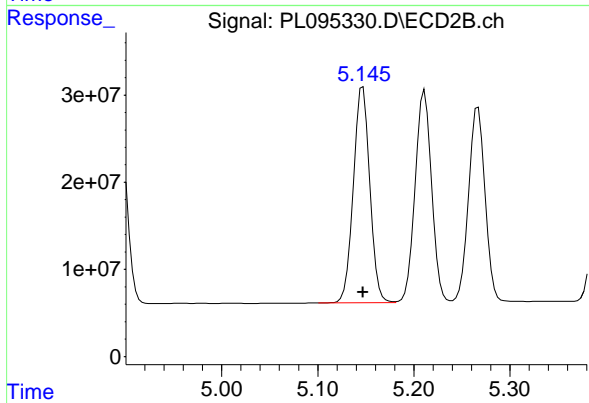
#9 Endosulfan I

R.T.: 5.267 min
 Delta R.T.: 0.000 min
 Response: 267059488
 Conc: 73.74 ng/ml



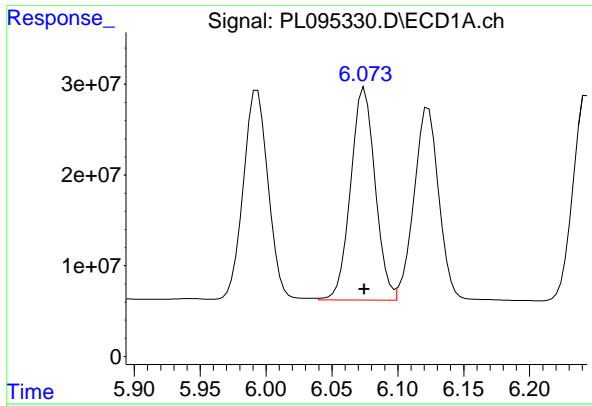
#10 gamma-Chlordane

R.T.: 5.993 min
 Delta R.T.: 0.000 min
 Response: 304444005
 Conc: 75.55 ng/ml



#10 gamma-Chlordane

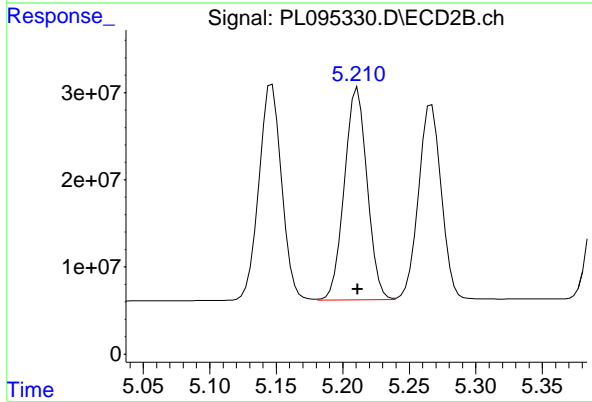
R.T.: 5.147 min
 Delta R.T.: 0.000 min
 Response: 294564763
 Conc: 73.79 ng/ml



#11 alpha-Chlordane

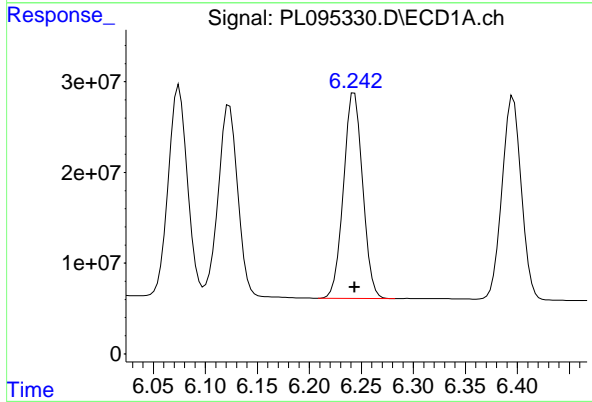
R.T.: 6.075 min
 Delta R.T.: 0.000 min
 Response: 302276319
 Conc: 75.61 ng/ml

Instrument :
 ECD_L
 ClientSampleId :
 PSTDICC075



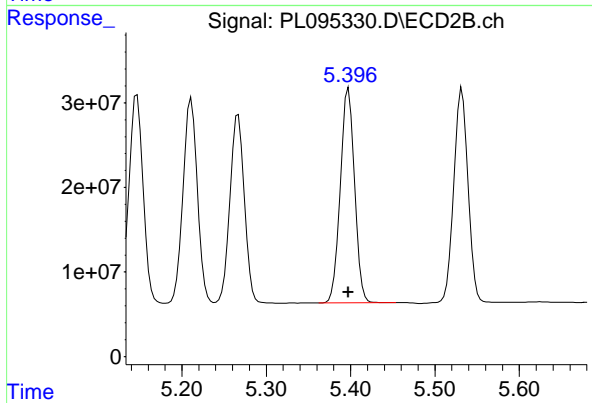
#11 alpha-Chlordane

R.T.: 5.211 min
 Delta R.T.: 0.000 min
 Response: 289691684
 Conc: 73.89 ng/ml



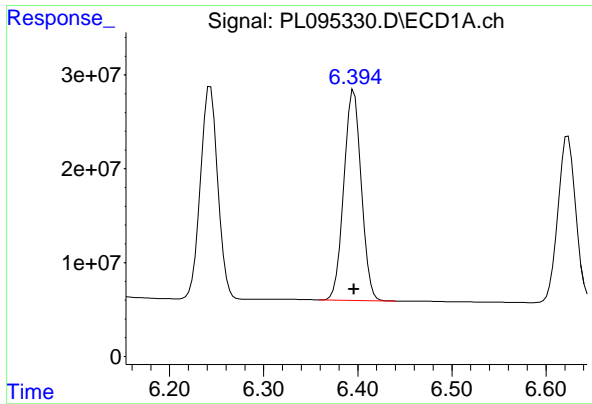
#12 4,4'-DDE

R.T.: 6.243 min
 Delta R.T.: 0.000 min
 Response: 289827813
 Conc: 75.44 ng/ml



#12 4,4'-DDE

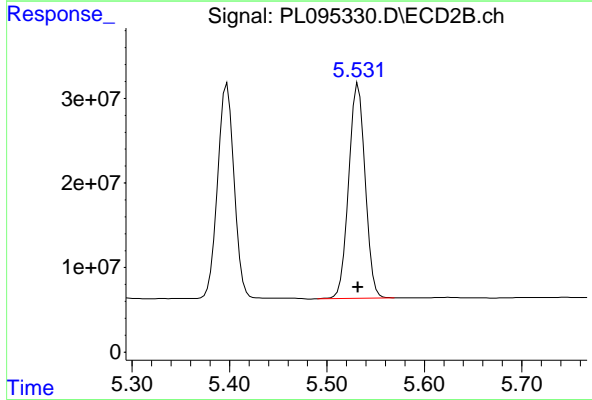
R.T.: 5.398 min
 Delta R.T.: 0.000 min
 Response: 297457686
 Conc: 73.81 ng/ml



#13 Dieldrin

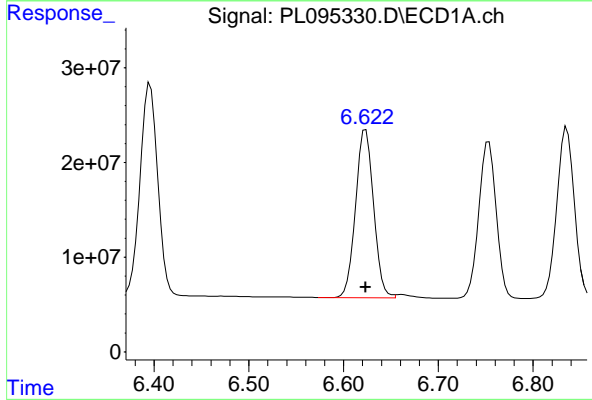
R.T.: 6.396 min
 Delta R.T.: 0.000 min
 Response: 288216681
 Conc: 75.66 ng/ml

Instrument :
 ECD_L
 ClientSampleId :
 PSTDICC075



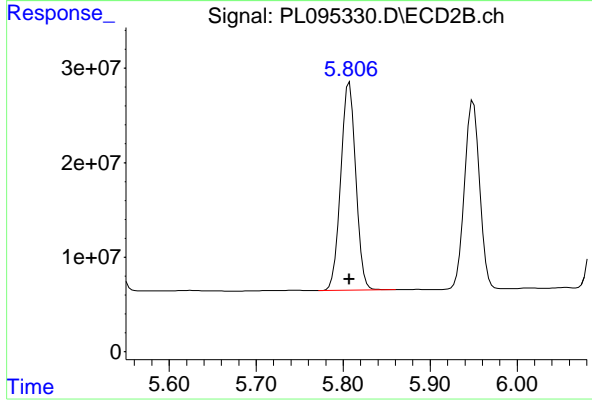
#13 Dieldrin

R.T.: 5.532 min
 Delta R.T.: 0.000 min
 Response: 297383658
 Conc: 74.20 ng/ml



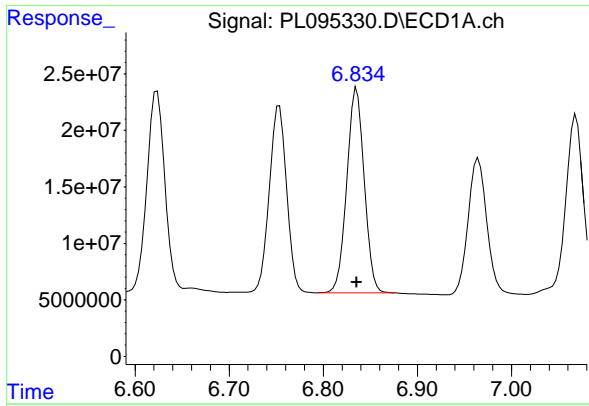
#14 Endrin

R.T.: 6.623 min
 Delta R.T.: 0.000 min
 Response: 235125435
 Conc: 75.48 ng/ml



#14 Endrin

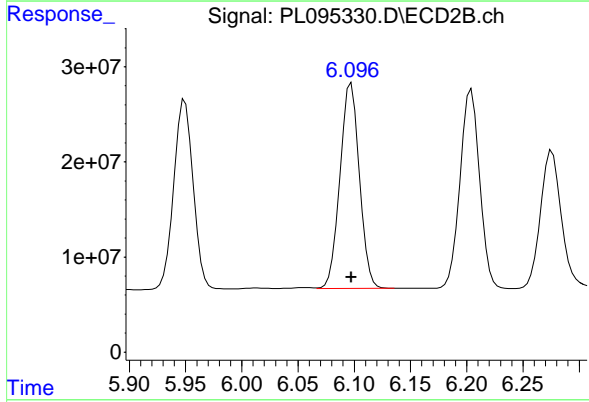
R.T.: 5.807 min
 Delta R.T.: 0.000 min
 Response: 265946466
 Conc: 73.83 ng/ml



#15 Endosulfan II

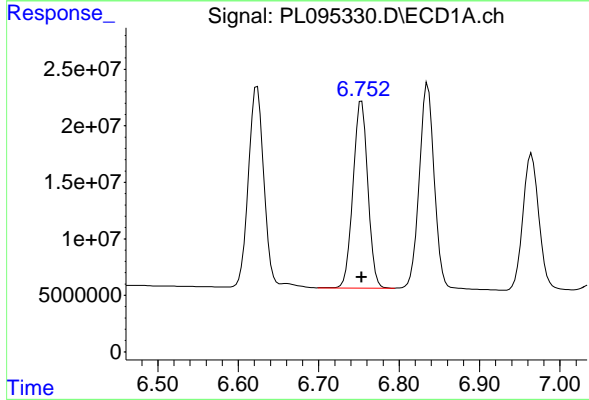
R.T.: 6.836 min
Delta R.T.: 0.000 min
Response: 232764280
Conc: 75.62 ng/ml

Instrument :
ECD_L
ClientSampleId :
PSTDICC075



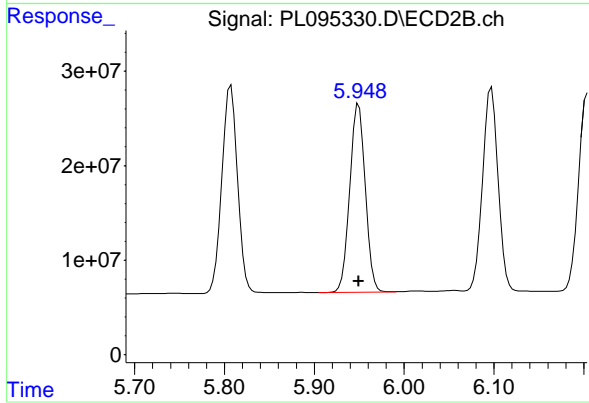
#15 Endosulfan II

R.T.: 6.097 min
Delta R.T.: 0.000 min
Response: 260085386
Conc: 73.96 ng/ml



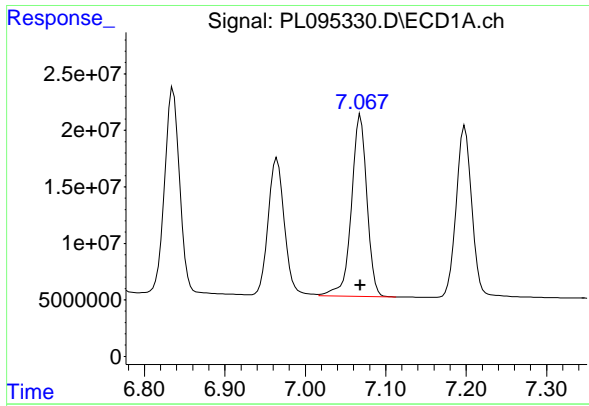
#16 4,4'-DDD

R.T.: 6.753 min
Delta R.T.: 0.000 min
Response: 211508192
Conc: 75.61 ng/ml



#16 4,4'-DDD

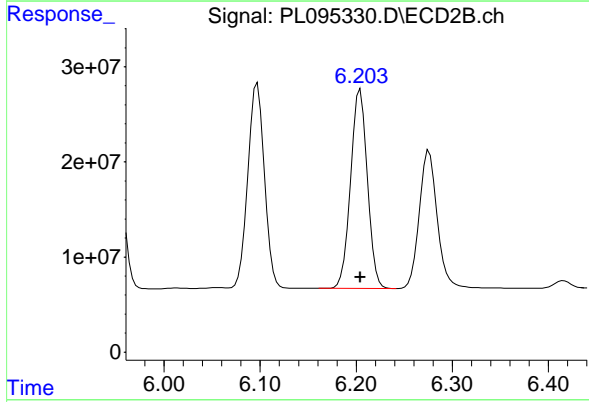
R.T.: 5.949 min
Delta R.T.: 0.000 min
Response: 239572214
Conc: 73.83 ng/ml



#17 4,4' -DDT

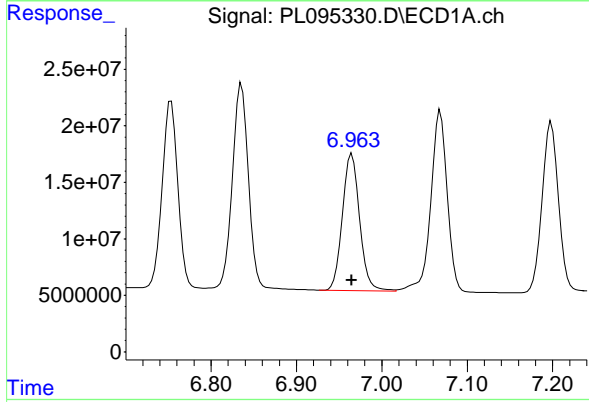
R.T.: 7.069 min
 Delta R.T.: 0.000 min
 Response: 214925152
 Conc: 75.60 ng/ml

Instrument :
 ECD_L
 ClientSampleId :
 PSTDICC075



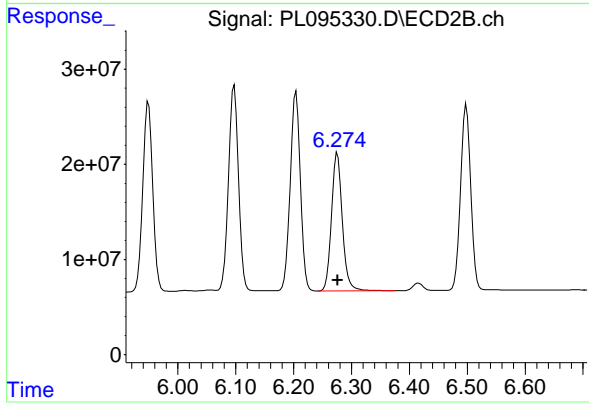
#17 4,4' -DDT

R.T.: 6.204 min
 Delta R.T.: 0.000 min
 Response: 253306887
 Conc: 73.60 ng/ml



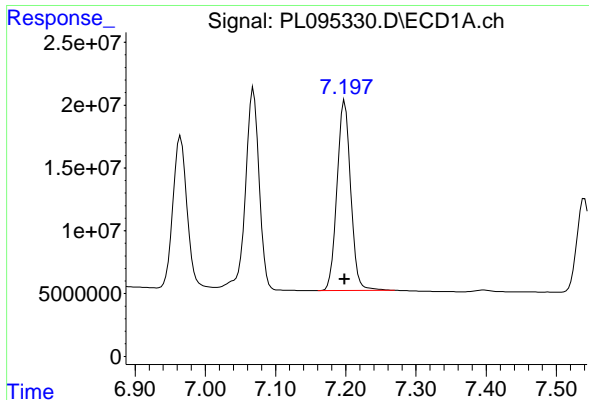
#18 Endrin aldehyde

R.T.: 6.965 min
 Delta R.T.: 0.000 min
 Response: 169615564
 Conc: 75.32 ng/ml



#18 Endrin aldehyde

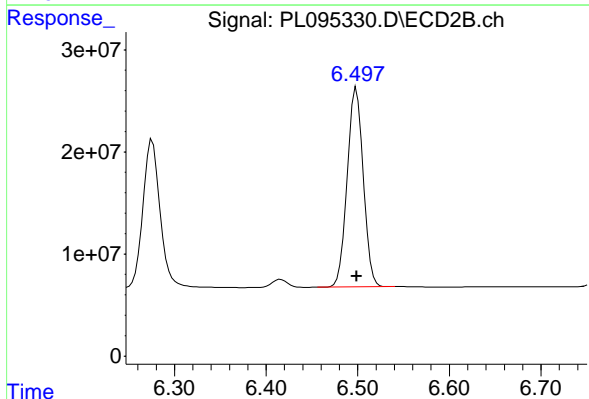
R.T.: 6.276 min
 Delta R.T.: 0.000 min
 Response: 189145520
 Conc: 73.99 ng/ml



#19 Endosulfan Sulfate

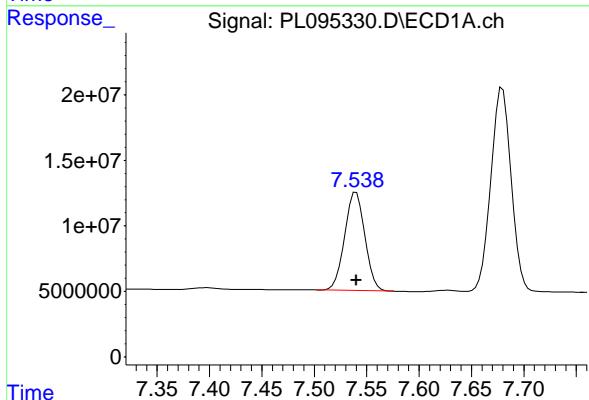
R.T.: 7.199 min
 Delta R.T.: 0.000 min
 Response: 204798645
 Conc: 75.44 ng/ml

Instrument :
 ECD_L
 ClientSampleId :
 PSTDICC075



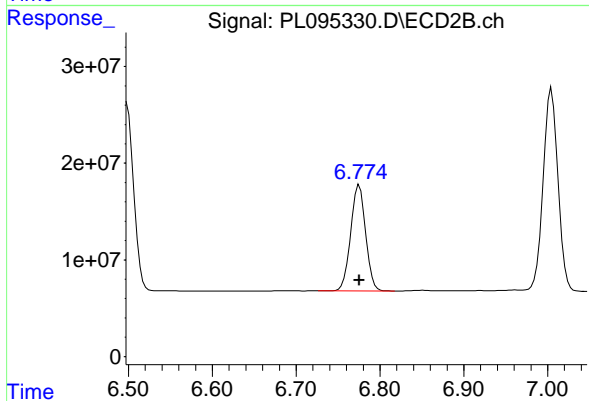
#19 Endosulfan Sulfate

R.T.: 6.498 min
 Delta R.T.: 0.000 min
 Response: 238743040
 Conc: 73.74 ng/ml



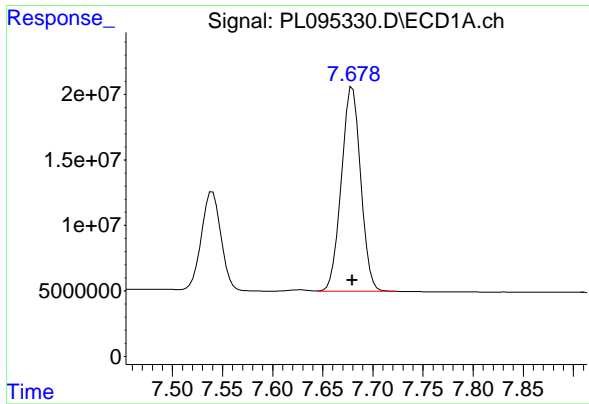
#20 Methoxychlor

R.T.: 7.540 min
 Delta R.T.: 0.000 min
 Response: 101220348
 Conc: 75.31 ng/ml



#20 Methoxychlor

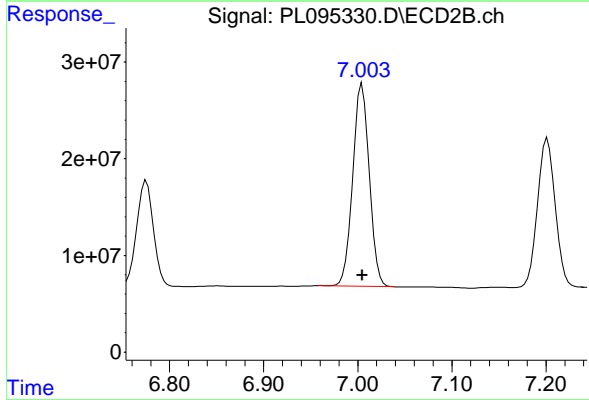
R.T.: 6.775 min
 Delta R.T.: 0.000 min
 Response: 135415410
 Conc: 73.39 ng/ml



#21 Endrin ketone

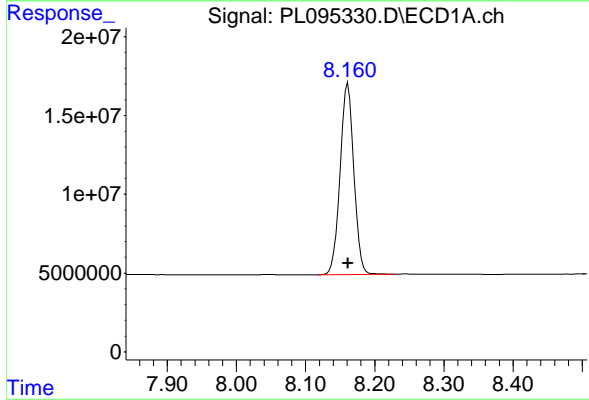
R.T.: 7.680 min
 Delta R.T.: 0.000 min
 Response: 208925085
 Conc: 75.40 ng/ml

Instrument :
 ECD_L
 ClientSampleId :
 PSTDICC075



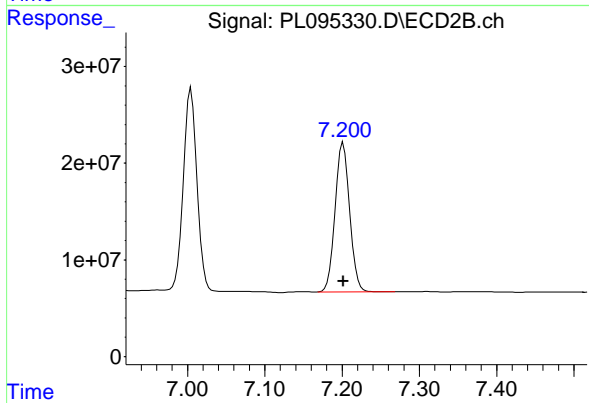
#21 Endrin ketone

R.T.: 7.005 min
 Delta R.T.: 0.000 min
 Response: 256024283
 Conc: 73.87 ng/ml



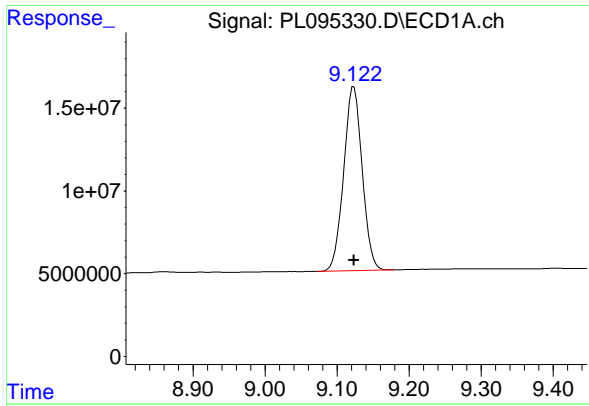
#22 Mirex

R.T.: 8.161 min
 Delta R.T.: 0.000 min
 Response: 167259178
 Conc: 75.14 ng/ml



#22 Mirex

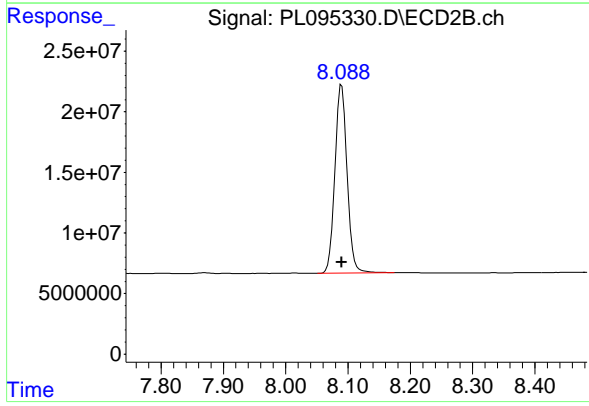
R.T.: 7.202 min
 Delta R.T.: 0.000 min
 Response: 202555085
 Conc: 73.25 ng/ml



#28 Decachlorobiphenyl

R.T.: 9.123 min
Delta R.T.: 0.000 min
Response: 198234966
Conc: 74.96 ng/ml

Instrument :
ECD_L
ClientSampleId :
PSTDICC075



#28 Decachlorobiphenyl

R.T.: 8.090 min
Delta R.T.: 0.000 min
Response: 210388999
Conc: 73.07 ng/ml