

Data Path : Z:\pestpcbsrv\HPCHEM1\ECD_L\Data\PL042325\
 Data File : PL095331.D
 Signal(s) : Signal #1: ECD1A.ch Signal #2: ECD2B.ch
 Acq On : 23 Apr 2025 11:59
 Operator : AR\AJ
 Sample : PSTDICC050
 Misc :
 ALS Vial : 7 Sample Multiplier: 1

Instrument :
 ECD_L
 ClientSampleId :
 PSTDICC050

Integration File signal 1: autoint1.e
 Integration File signal 2: autoint2.e
 Quant Time: Apr 23 12:26:23 2025
 Quant Method : Z:\pestpcbsrv\HPCHEM1\ECD_L\methods\PL042325.M
 Quant Title : GC Extractables
 QLast Update : Wed Apr 23 12:26:08 2025
 Response via : Initial Calibration
 Integrator: ChemStation

Volume Inj. : 1 µl
 Signal #1 Phase : ZB-MR2 Signal #2 Phase: ZB-MR2
 Signal #1 Info : 30M x 0.32mm x0.5 Signal #2 Info : 30M x 0.32mm x0.25µm

Compound	RT#1	RT#2	Resp#1	Resp#2	ng/ml	ng/ml

System Monitoring Compounds						
1) SA Tetrachlo...	3.595	2.906	156.1E6	151.5E6	50.000	50.000
28) SA Decachlor...	9.122	8.089	132.2E6	141.0E6	50.000	50.000
Target Compounds						
2) A alpha-BHC	4.046	3.416	238.7E6	214.9E6	50.000	50.000
3) MA gamma-BHC...	4.377	3.750	227.5E6	211.4E6	50.000	50.000
4) MA Heptachlor	4.976	4.104	218.9E6	207.7E6	50.000	50.000
5) MB Aldrin	5.318	4.390	220.1E6	196.6E6	50.000	50.000
6) B beta-BHC	4.564	4.044	98262466	97170224	50.000	50.000
7) B delta-BHC	4.812	4.280	221.2E6	210.5E6	50.000	50.000
8) B Heptachlo...	5.739	4.893	190.1E6	183.5E6	50.000	50.000
9) A Endosulfan I	6.123	5.267	181.3E6	174.9E6	50.000	50.000
10) B gamma-Chl...	5.994	5.147	195.3E6	191.0E6	50.000	50.000
11) B alpha-Chl...	6.075	5.211	194.3E6	188.3E6	50.000	50.000
12) B 4,4'-DDE	6.243	5.397	186.7E6	193.3E6	50.000	50.000
13) MA Dieldrin	6.396	5.532	183.9E6	191.1E6	50.000	50.000
14) MA Endrin	6.623	5.807	151.5E6	173.0E6	50.000	50.000
15) B Endosulfa...	6.835	6.097	150.1E6	169.2E6	50.000	50.000
16) A 4,4'-DDD	6.753	5.949	135.4E6	154.5E6	50.000	50.000
17) MA 4,4'-DDT	7.069	6.204	138.0E6	163.9E6	50.000	50.000
18) B Endrin al...	6.964	6.275	110.9E6	123.6E6	50.000	50.000
19) B Endosulfa...	7.198	6.498	133.4E6	156.9E6	50.000	50.000
20) A Methoxychlor	7.540	6.775	66506986	90587055	50.000	50.000
21) B Endrin ke...	7.679	7.004	136.0E6	167.7E6	50.000	50.000
22) Mirex	8.161	7.202	111.7E6	135.8E6	50.000	50.000

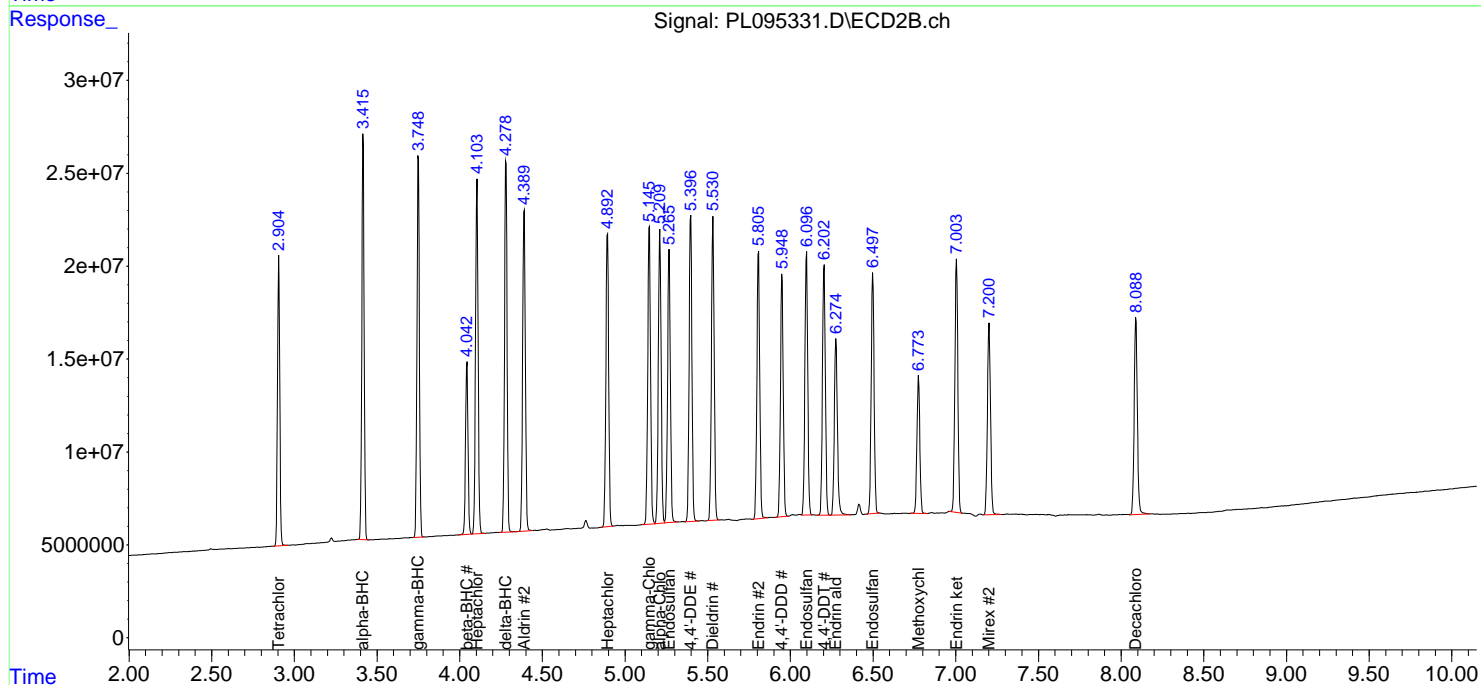
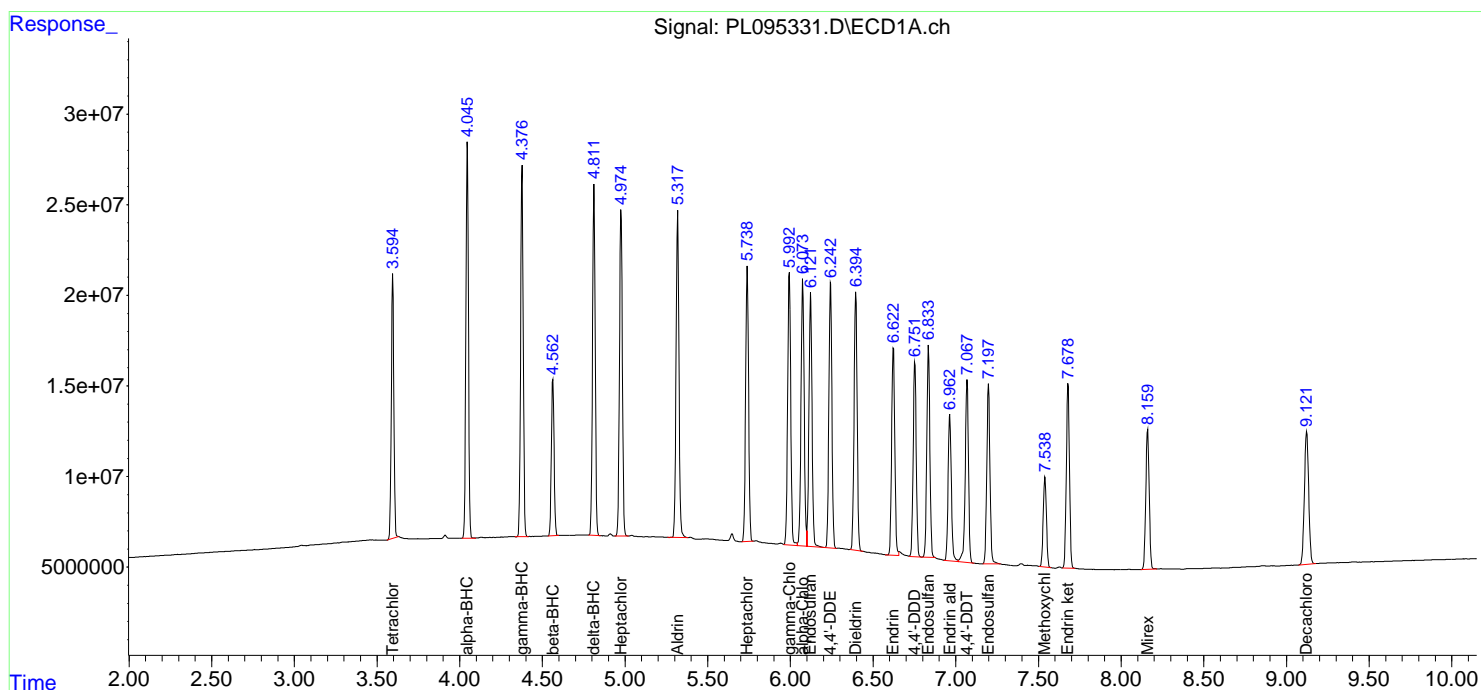
(f)=RT Delta > 1/2 Window (#)=Amounts differ by > 25% (m)=manual int.

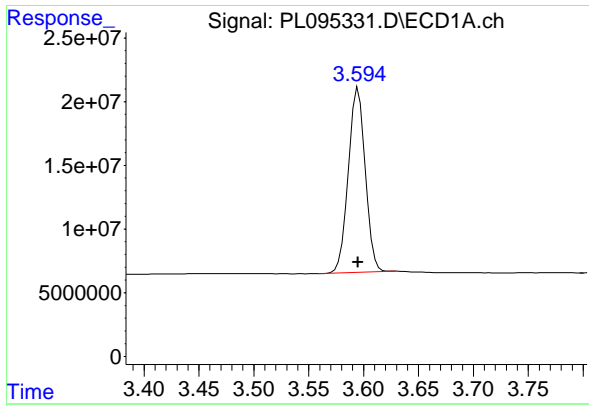
Data Path : Z:\pestpcbsrv\HPCHEM1\ECD_L\Data\PL042325\
 Data File : PL095331.D
 Signal(s) : Signal #1: ECD1A.ch Signal #2: ECD2B.ch
 Acq On : 23 Apr 2025 11:59
 Operator : AR\AJ
 Sample : PSTDICC050
 Misc :
 ALS Vial : 7 Sample Multiplier: 1

Instrument :
 ECD_L
 ClientSampleId :
 PSTDICC050

Integration File signal 1: autoint1.e
 Integration File signal 2: autoint2.e
 Quant Time: Apr 23 12:26:23 2025
 Quant Method : Z:\pestpcbsrv\HPCHEM1\ECD_L\methods\PL042325.M
 Quant Title : GC Extractables
 QLast Update : Wed Apr 23 12:26:08 2025
 Response via : Initial Calibration
 Integrator: ChemStation

Volume Inj. : 1 µl
 Signal #1 Phase : ZB-MR1 Signal #2 Phase: ZB-MR2
 Signal #1 Info : 30M x 0.32mm x0.5 Signal #2 Info : 30M x 0.32mm x0.25µm

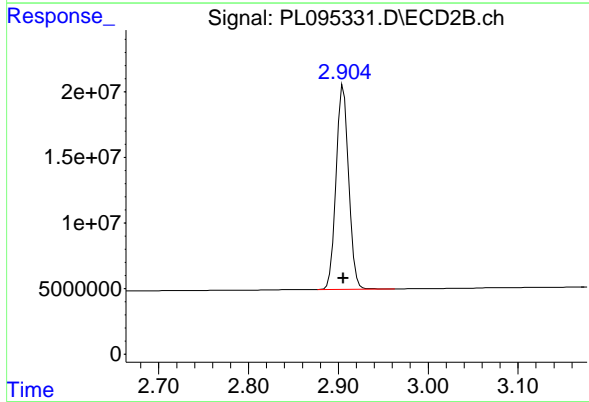




#1 Tetrachloro-m-xylene

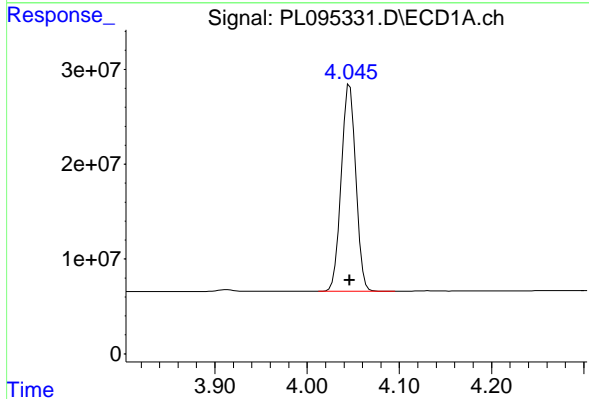
R.T.: 3.595 min
Delta R.T.: 0.000 min
Response: 156057142
Conc: 50.00 ng/ml

Instrument :
ECD_L
ClientSampleId :
PSTDICC050



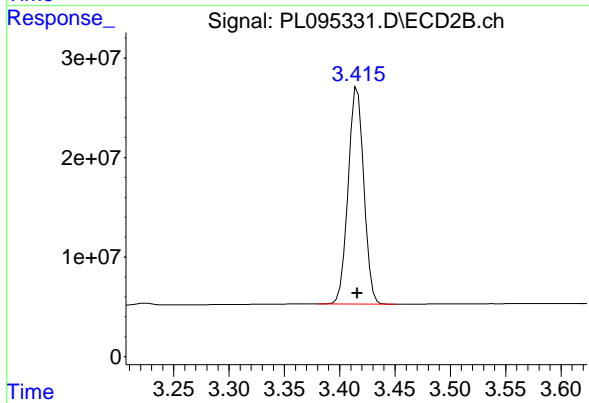
#1 Tetrachloro-m-xylene

R.T.: 2.906 min
Delta R.T.: 0.000 min
Response: 151545169
Conc: 50.00 ng/ml



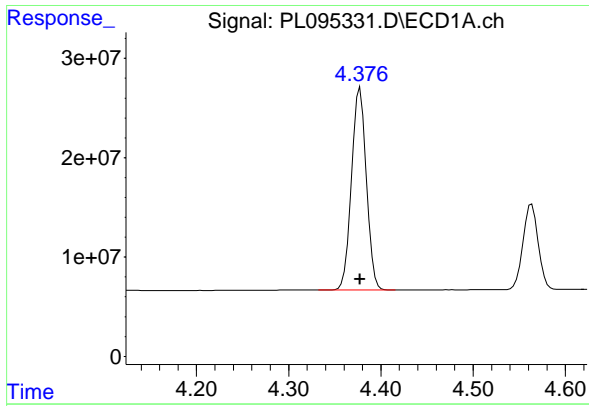
#2 alpha-BHC

R.T.: 4.046 min
Delta R.T.: 0.000 min
Response: 238716345
Conc: 50.00 ng/ml



#2 alpha-BHC

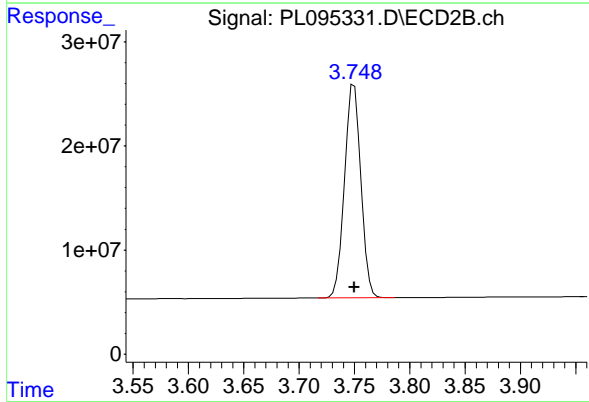
R.T.: 3.416 min
Delta R.T.: 0.000 min
Response: 214862057
Conc: 50.00 ng/ml



#3 gamma-BHC (Lindane)

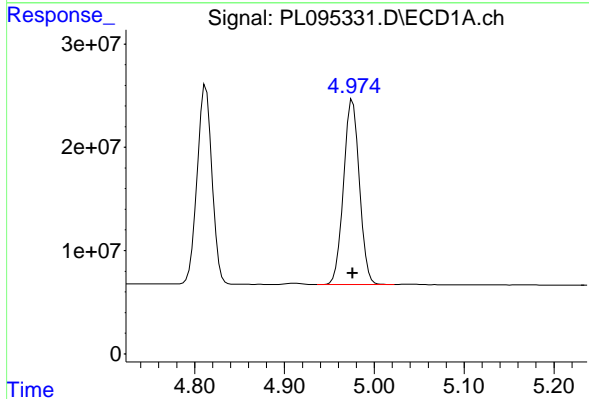
R.T.: 4.377 min
 Delta R.T.: 0.000 min
 Response: 227488019
 Conc: 50.00 ng/ml

Instrument :
 ECD_L
 ClientSampleId :
 PSTDICC050



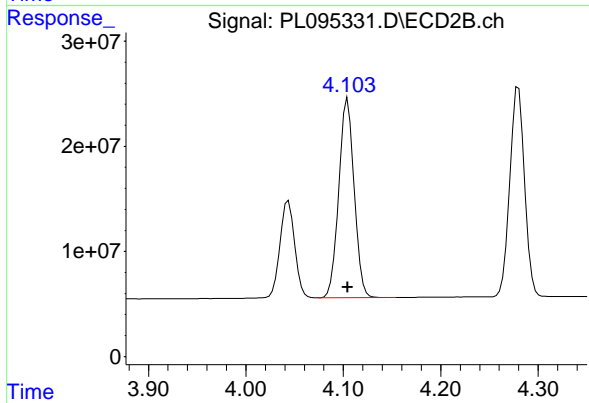
#3 gamma-BHC (Lindane)

R.T.: 3.750 min
 Delta R.T.: 0.000 min
 Response: 211420886
 Conc: 50.00 ng/ml



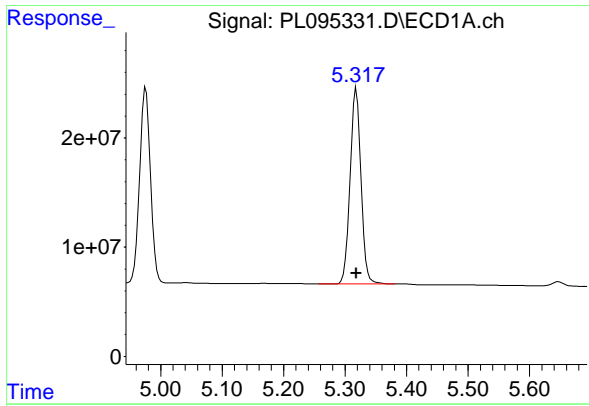
#4 Heptachlor

R.T.: 4.976 min
 Delta R.T.: 0.000 min
 Response: 218889461
 Conc: 50.00 ng/ml



#4 Heptachlor

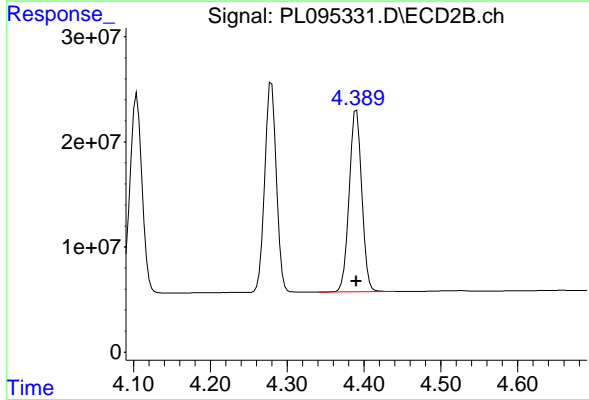
R.T.: 4.104 min
 Delta R.T.: 0.000 min
 Response: 207720997
 Conc: 50.00 ng/ml



#5 Aldrin

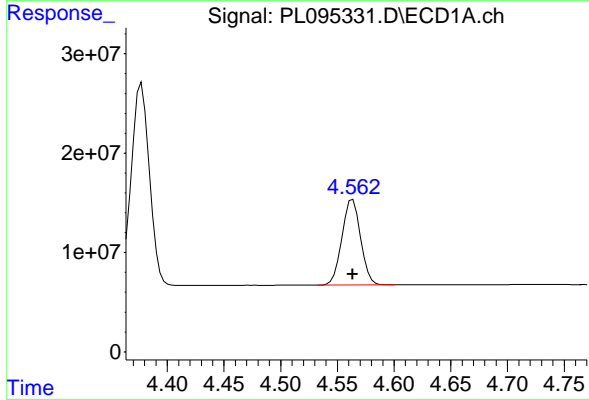
R.T.: 5.318 min
 Delta R.T.: 0.000 min
 Response: 220066140
 Conc: 50.00 ng/ml

Instrument :
 ECD_L
 ClientSampleId :
 PSTDICC050



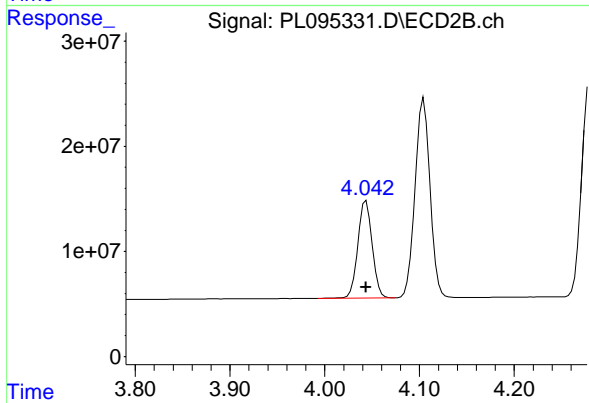
#5 Aldrin

R.T.: 4.390 min
 Delta R.T.: 0.000 min
 Response: 196600026
 Conc: 50.00 ng/ml



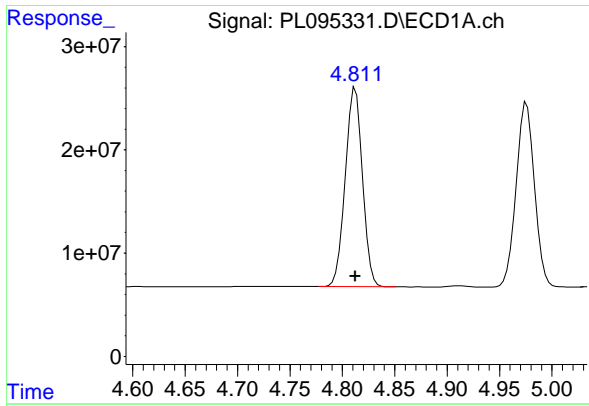
#6 beta-BHC

R.T.: 4.564 min
 Delta R.T.: 0.000 min
 Response: 98262466
 Conc: 50.00 ng/ml



#6 beta-BHC

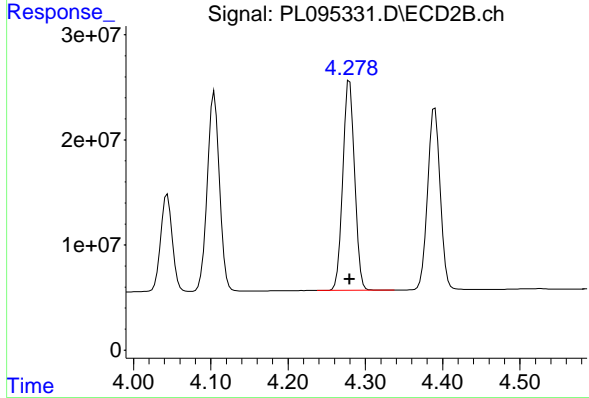
R.T.: 4.044 min
 Delta R.T.: 0.000 min
 Response: 97170224
 Conc: 50.00 ng/ml



#7 delta-BHC

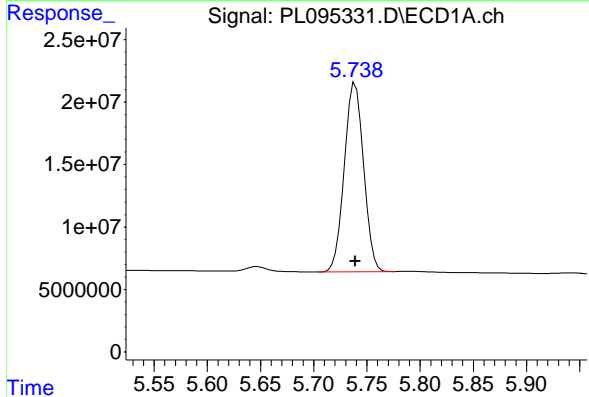
R.T.: 4.812 min
 Delta R.T.: 0.000 min
 Response: 221209359
 Conc: 50.00 ng/ml

Instrument :
 ECD_L
 ClientSampleId :
 PSTDICC050



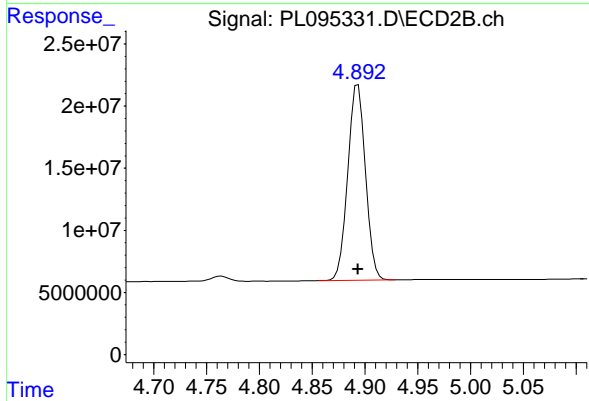
#7 delta-BHC

R.T.: 4.280 min
 Delta R.T.: 0.000 min
 Response: 210531915
 Conc: 50.00 ng/ml



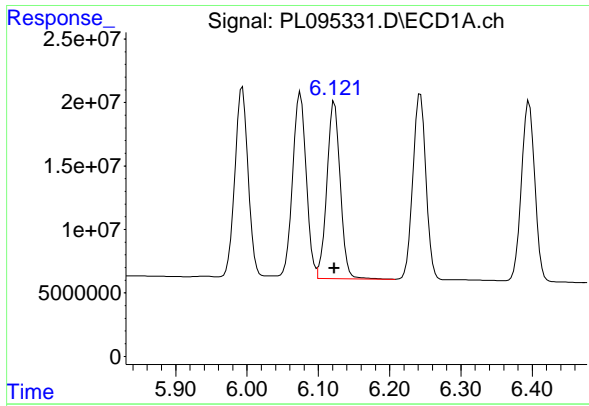
#8 Heptachlor epoxide

R.T.: 5.739 min
 Delta R.T.: 0.000 min
 Response: 190059310
 Conc: 50.00 ng/ml



#8 Heptachlor epoxide

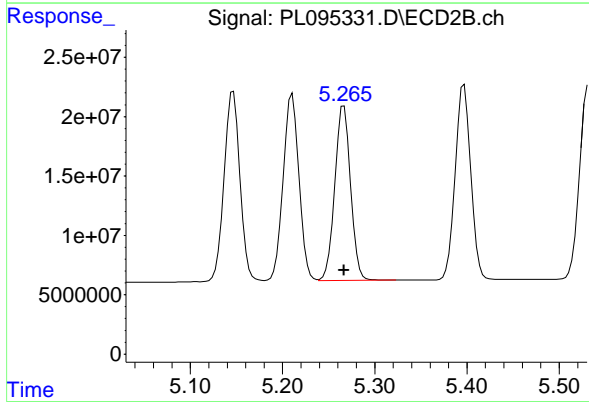
R.T.: 4.893 min
 Delta R.T.: 0.000 min
 Response: 183471014
 Conc: 50.00 ng/ml



#9 Endosulfan I

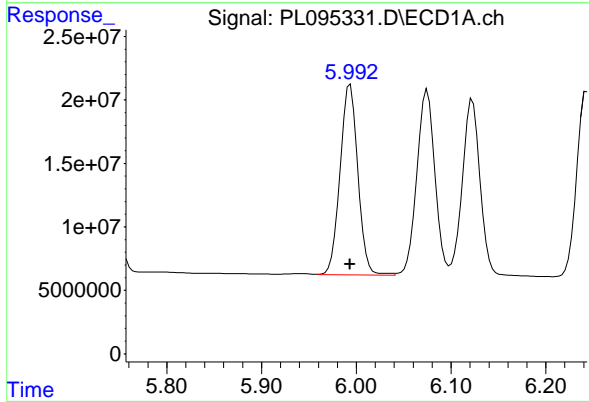
R.T.: 6.123 min
 Delta R.T.: 0.000 min
 Response: 181331514
 Conc: 50.00 ng/ml

Instrument :
 ECD_L
 ClientSampleId :
 PSTDICC050



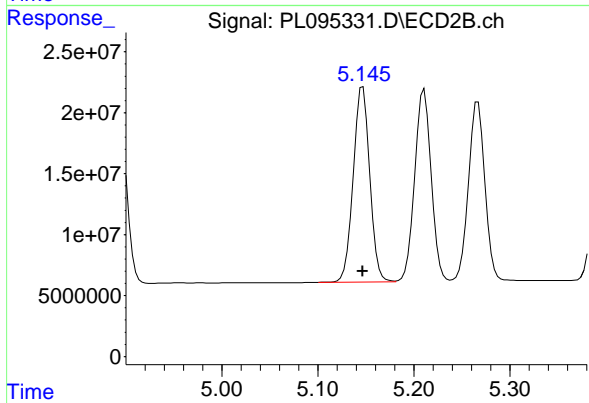
#9 Endosulfan I

R.T.: 5.267 min
 Delta R.T.: 0.000 min
 Response: 174855063
 Conc: 50.00 ng/ml



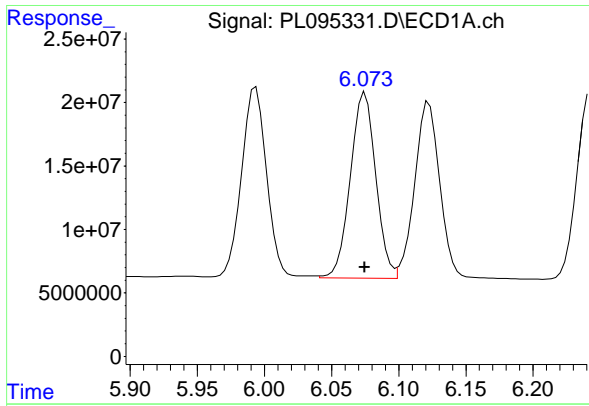
#10 gamma-Chlordane

R.T.: 5.994 min
 Delta R.T.: 0.000 min
 Response: 195277390
 Conc: 50.00 ng/ml



#10 gamma-Chlordane

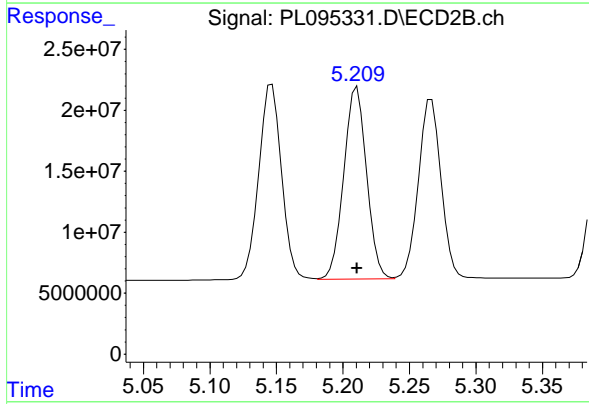
R.T.: 5.147 min
 Delta R.T.: 0.000 min
 Response: 191000971
 Conc: 50.00 ng/ml



#11 alpha-Chlordane

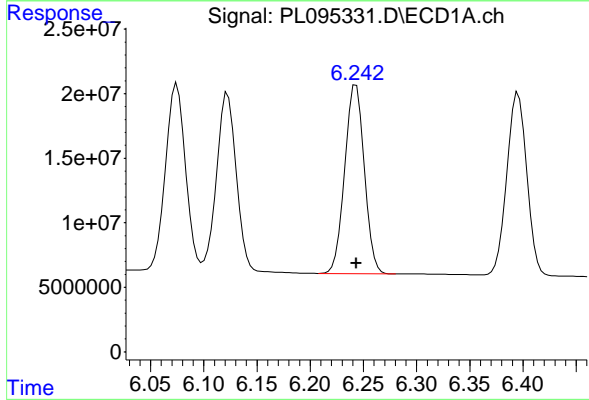
R.T.: 6.075 min
 Delta R.T.: 0.000 min
 Response: 194300314
 Conc: 50.00 ng/ml

Instrument :
 ECD_L
 ClientSampleId :
 PSTDICC050



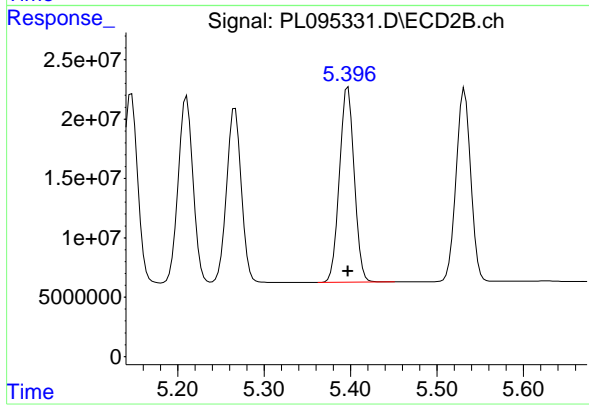
#11 alpha-Chlordane

R.T.: 5.211 min
 Delta R.T.: 0.000 min
 Response: 188256243
 Conc: 50.00 ng/ml



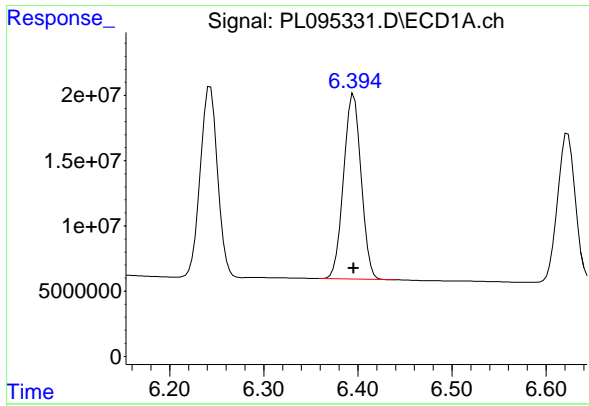
#12 4,4'-DDE

R.T.: 6.243 min
 Delta R.T.: 0.000 min
 Response: 186685923
 Conc: 50.00 ng/ml



#12 4,4'-DDE

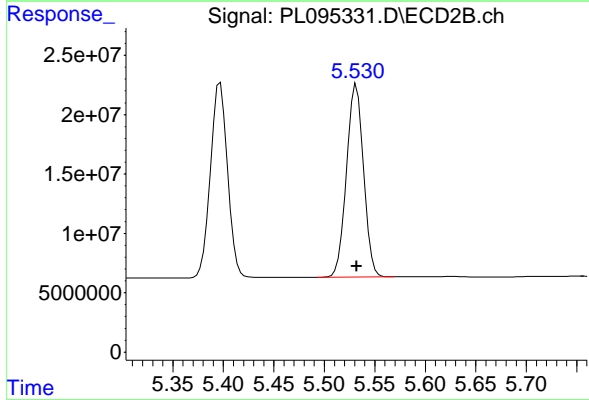
R.T.: 5.397 min
 Delta R.T.: 0.000 min
 Response: 193266652
 Conc: 50.00 ng/ml



#13 Dieldrin

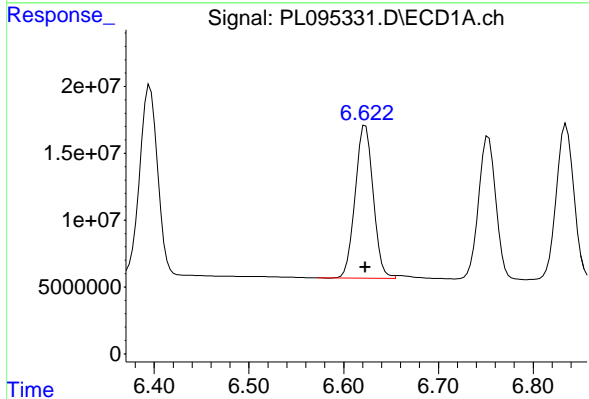
R.T.: 6.396 min
 Delta R.T.: 0.000 min
 Response: 183933353
 Conc: 50.00 ng/ml

Instrument :
 ECD_L
 ClientSampleId :
 PSTDICC050



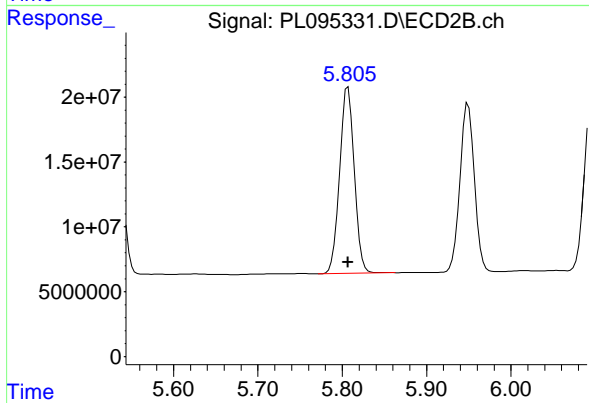
#13 Dieldrin

R.T.: 5.532 min
 Delta R.T.: 0.000 min
 Response: 191070370
 Conc: 50.00 ng/ml



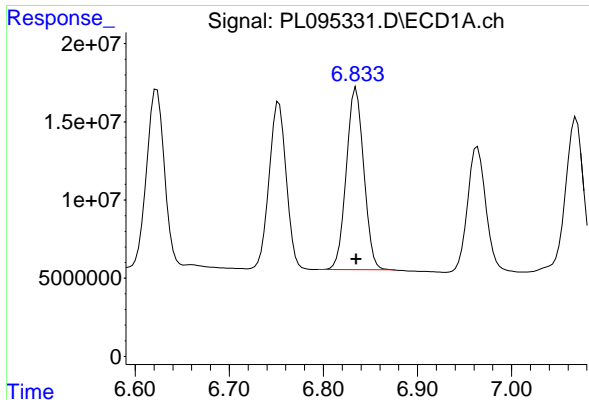
#14 Endrin

R.T.: 6.623 min
 Delta R.T.: 0.000 min
 Response: 151468547
 Conc: 50.00 ng/ml



#14 Endrin

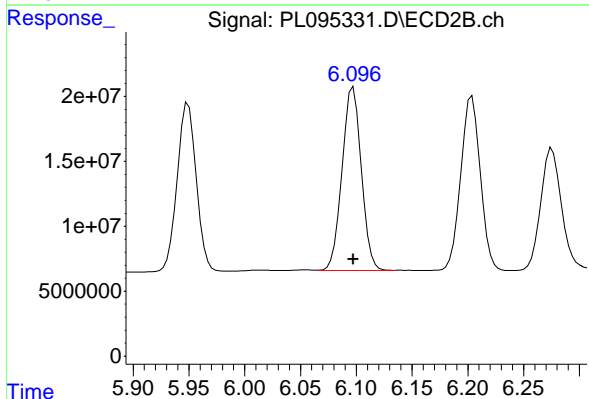
R.T.: 5.807 min
 Delta R.T.: 0.000 min
 Response: 173012074
 Conc: 50.00 ng/ml



#15 Endosulfan II

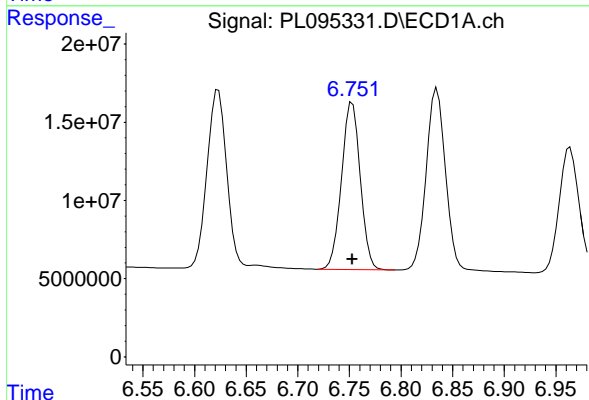
R.T.: 6.835 min
 Delta R.T.: 0.000 min
 Response: 150136467
 Conc: 50.00 ng/ml

Instrument :
 ECD_L
 ClientSampleId :
 PSTDICC050



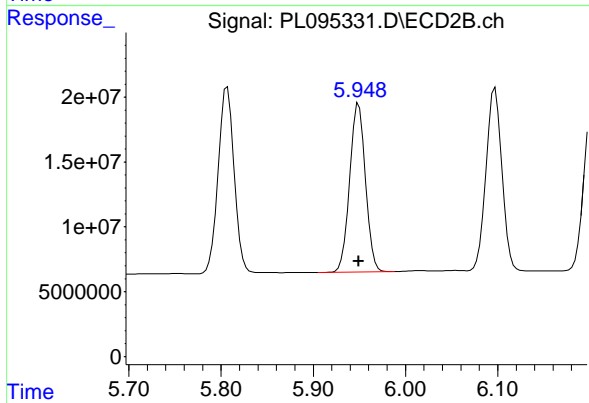
#15 Endosulfan II

R.T.: 6.097 min
 Delta R.T.: 0.000 min
 Response: 169194430
 Conc: 50.00 ng/ml



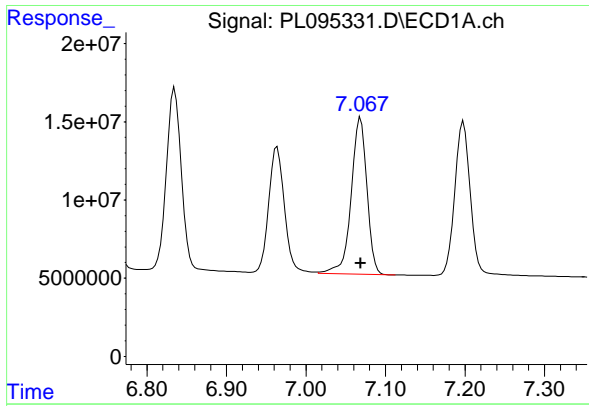
#16 4,4'-DDD

R.T.: 6.753 min
 Delta R.T.: 0.000 min
 Response: 135370128
 Conc: 50.00 ng/ml



#16 4,4'-DDD

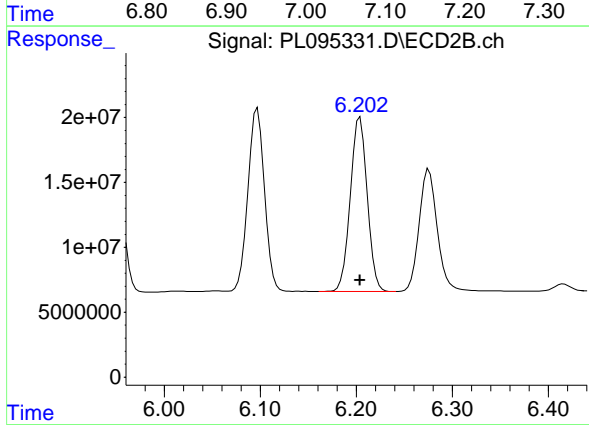
R.T.: 5.949 min
 Delta R.T.: 0.000 min
 Response: 154470926
 Conc: 50.00 ng/ml



#17 4,4' -DDT

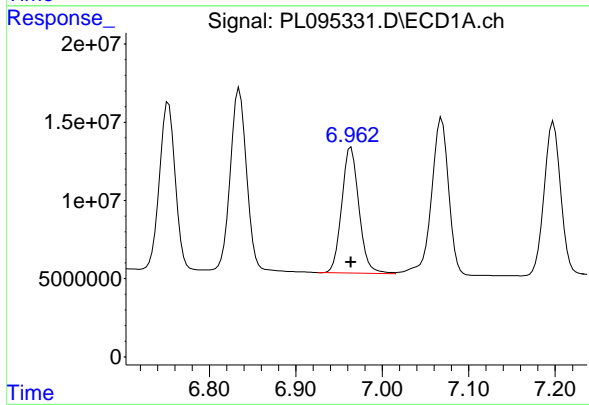
R.T.: 7.069 min
 Delta R.T.: 0.000 min
 Response: 138014497
 Conc: 50.00 ng/ml

Instrument :
 ECD_L
 ClientSampleId :
 PSTDICC050



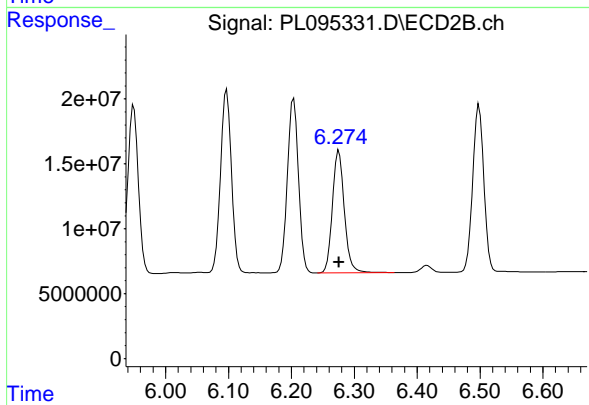
#17 4,4' -DDT

R.T.: 6.204 min
 Delta R.T.: 0.000 min
 Response: 163865649
 Conc: 50.00 ng/ml



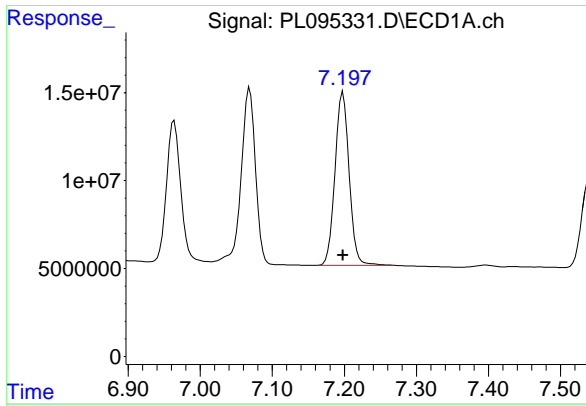
#18 Endrin aldehyde

R.T.: 6.964 min
 Delta R.T.: 0.000 min
 Response: 110876762
 Conc: 50.00 ng/ml



#18 Endrin aldehyde

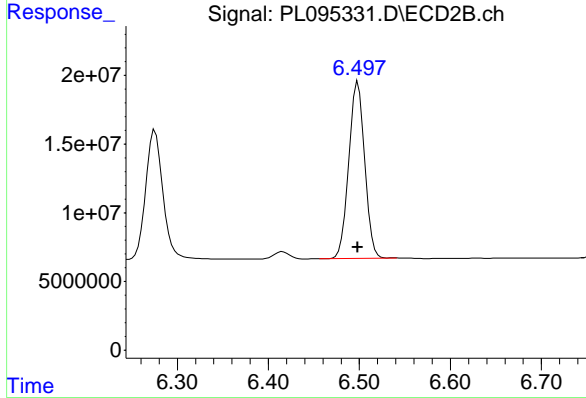
R.T.: 6.275 min
 Delta R.T.: 0.000 min
 Response: 123643969
 Conc: 50.00 ng/ml



#19 Endosulfan Sulfate

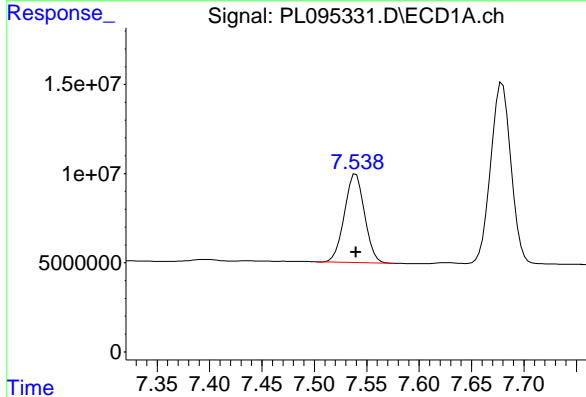
R.T.: 7.198 min
 Delta R.T.: 0.000 min
 Response: 133416138
 Conc: 50.00 ng/ml

Instrument :
 ECD_L
 ClientSampleId :
 PSTDICC050



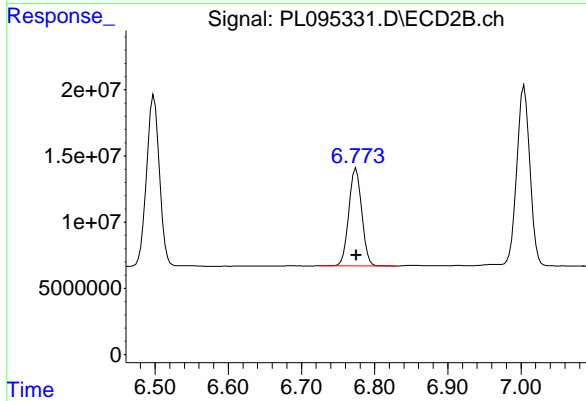
#19 Endosulfan Sulfate

R.T.: 6.498 min
 Delta R.T.: 0.000 min
 Response: 156854144
 Conc: 50.00 ng/ml



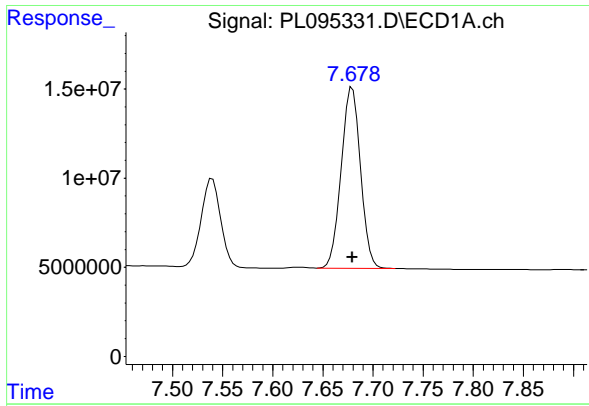
#20 Methoxychlor

R.T.: 7.540 min
 Delta R.T.: 0.000 min
 Response: 66506986
 Conc: 50.00 ng/ml



#20 Methoxychlor

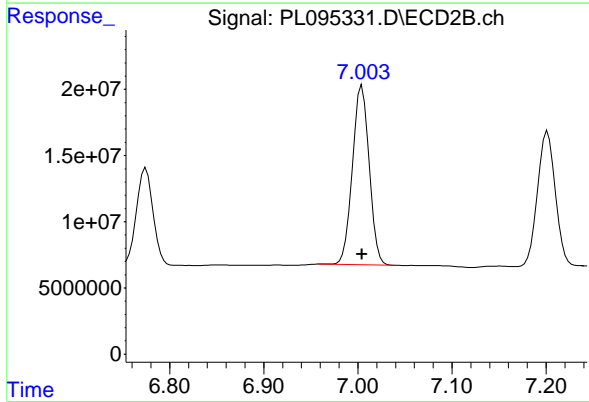
R.T.: 6.775 min
 Delta R.T.: 0.000 min
 Response: 90587055
 Conc: 50.00 ng/ml



#21 Endrin ketone

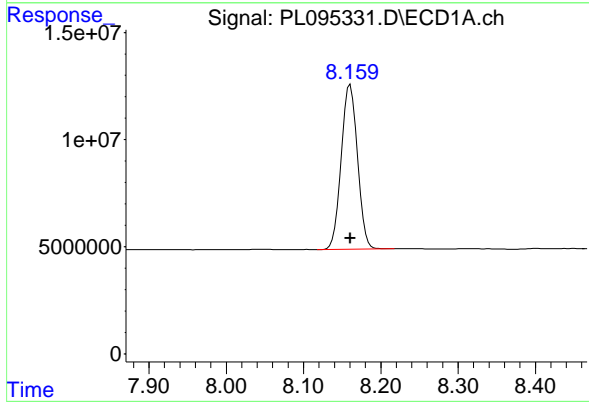
R.T.: 7.679 min
 Delta R.T.: 0.000 min
 Response: 135960297
 Conc: 50.00 ng/ml

Instrument :
 ECD_L
 ClientSampleId :
 PSTDICC050



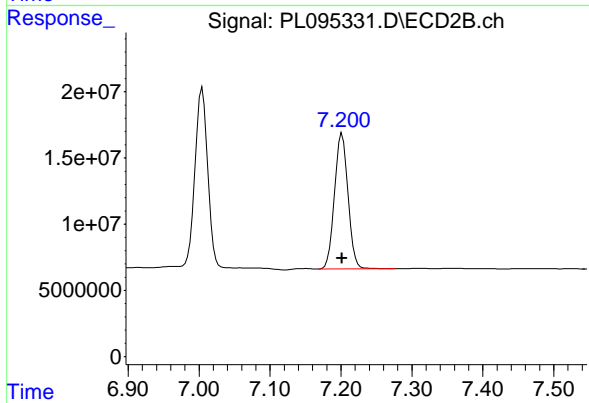
#21 Endrin ketone

R.T.: 7.004 min
 Delta R.T.: 0.000 min
 Response: 167739735
 Conc: 50.00 ng/ml



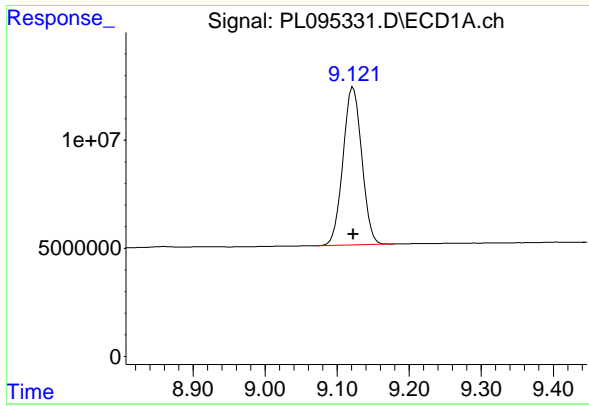
#22 Mirex

R.T.: 8.161 min
 Delta R.T.: 0.000 min
 Response: 111665092
 Conc: 50.00 ng/ml



#22 Mirex

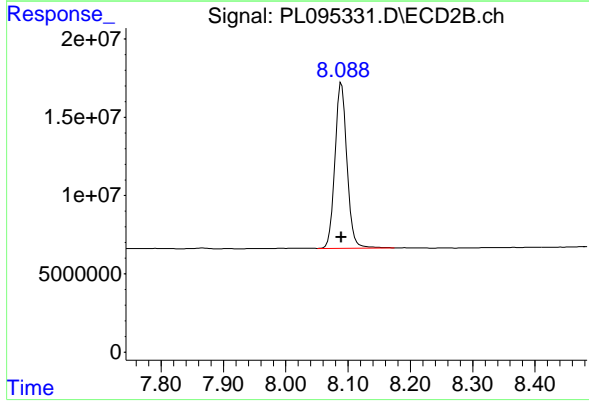
R.T.: 7.202 min
 Delta R.T.: 0.000 min
 Response: 135843022
 Conc: 50.00 ng/ml



#28 Decachlorobiphenyl

R.T.: 9.122 min
Delta R.T.: 0.000 min
Response: 132162192
Conc: 50.00 ng/ml

Instrument :
ECD_L
ClientSampleId :
PSTDICC050



#28 Decachlorobiphenyl

R.T.: 8.089 min
Delta R.T.: 0.000 min
Response: 140963039
Conc: 50.00 ng/ml