

Data Path : Z:\pestpcbsrv\HPCHEM1\ECD\_L\Data\PL042325\  
 Data File : PL095333.D  
 Signal(s) : Signal #1: ECD1A.ch Signal #2: ECD2B.ch  
 Acq On : 23 Apr 2025 12:26  
 Operator : AR\AJ  
 Sample : PSTDICC005  
 Misc :  
 ALS Vial : 9 Sample Multiplier: 1

**Instrument :**  
 ECD\_L  
**ClientSampleId :**  
 PSTDICC005

**Manual Integrations**  
**APPROVED**  
 Reviewed By :Abdul Mirza 04/24/2025  
 Supervised By :mohammad ahmed 04/26/2025

Integration File signal 1: autoint1.e  
 Integration File signal 2: autoint2.e  
 Quant Time: Apr 23 12:35:44 2025  
 Quant Method : Z:\pestpcbsrv\HPCHEM1\ECD\_L\methods\PL042325.M  
 Quant Title : GC Extractables  
 QLast Update : Wed Apr 23 12:35:34 2025  
 Response via : Initial Calibration  
 Integrator: ChemStation

Volume Inj. : 1 µl  
 Signal #1 Phase : ZB-MR1 Signal #2 Phase: ZB-MR2  
 Signal #1 Info : 30M x 0.32mm x0.5 Signal #2 Info : 30M x 0.32mm x0.25µm

Compound	RT#1	RT#2	Resp#1	Resp#2	ng/ml	ng/ml
-----						
System Monitoring Compounds						
1) SA Tetrachlo...	3.595	2.905	17226547	16774274	5.277	5.275
28) SA Decachlor...	9.124	8.089	15494795	15593893	5.592	5.270
Target Compounds						
2) A alpha-BHC	4.046	3.415	24630161	21718521	4.972	4.882
3) MA gamma-BHC...	4.378	3.749	24047920	21843021	5.080	4.966
4) MA Heptachlor	4.976	4.104	24089854	22426031	5.266	5.147
5) MB Aldrin	5.317	4.389	23939616	20545826	5.212	4.992
6) B beta-BHC	4.564	4.043	11239021	11256224	5.436	5.422
7) B delta-BHC	4.812	4.280	24459248	21692758	5.259	4.950
8) B Heptachlo...	5.739	4.893	21350448	20141703	5.331	5.214
9) A Endosulfan I	6.122	5.266	20308048	18652835	5.348	5.096
10) B gamma-Chl...	5.993	5.146	21145113	21190077	5.183	5.229
11) B alpha-Chl...	6.074	5.210	21268601	20714715	5.231	5.203
12) B 4,4'-DDE	6.242	5.397	20770904	20747185	5.298	5.101
13) MA Dieldrin	6.396	5.532	19971571	21318751	5.181	5.242
14) MA Endrin	6.622	5.806	16946885	18649649	5.321	5.123
15) B Endosulfa...	6.835	6.097	17567027	18938000	5.503	5.274
16) A 4,4'-DDD	6.753	5.949	14708945	16655803	5.196	5.099
17) MA 4,4'-DDT	7.068	6.204	14262305	17073765	5.007	4.969
18) B Endrin al...	6.964	6.275	12367450	13751187	5.329	5.262
19) B Endosulfa...	7.198	6.498	15108097	17635344	5.392	5.315
20) A Methoxychlor	7.540	6.774	7589024	10262527	5.440	5.380
21) B Endrin ke...	7.679	7.004	15300793	18268527	5.367	5.188
22) Mirex	8.161	7.200	13844446	15752969	5.827	5.469m

(f)=RT Delta > 1/2 Window (#)=Amounts differ by > 25% (m)=manual int.

Data Path : Z:\pestpcbsrv\HPCHEM1\ECD\_L\Data\PL042325\  
 Data File : PL095333.D  
 Signal(s) : Signal #1: ECD1A.ch Signal #2: ECD2B.ch  
 Acq On : 23 Apr 2025 12:26  
 Operator : AR\AJ  
 Sample : PSTDICC005  
 Misc :  
 ALS Vial : 9 Sample Multiplier: 1

Instrument :

ECD\_L

ClientSampleId :

PSTDICC005

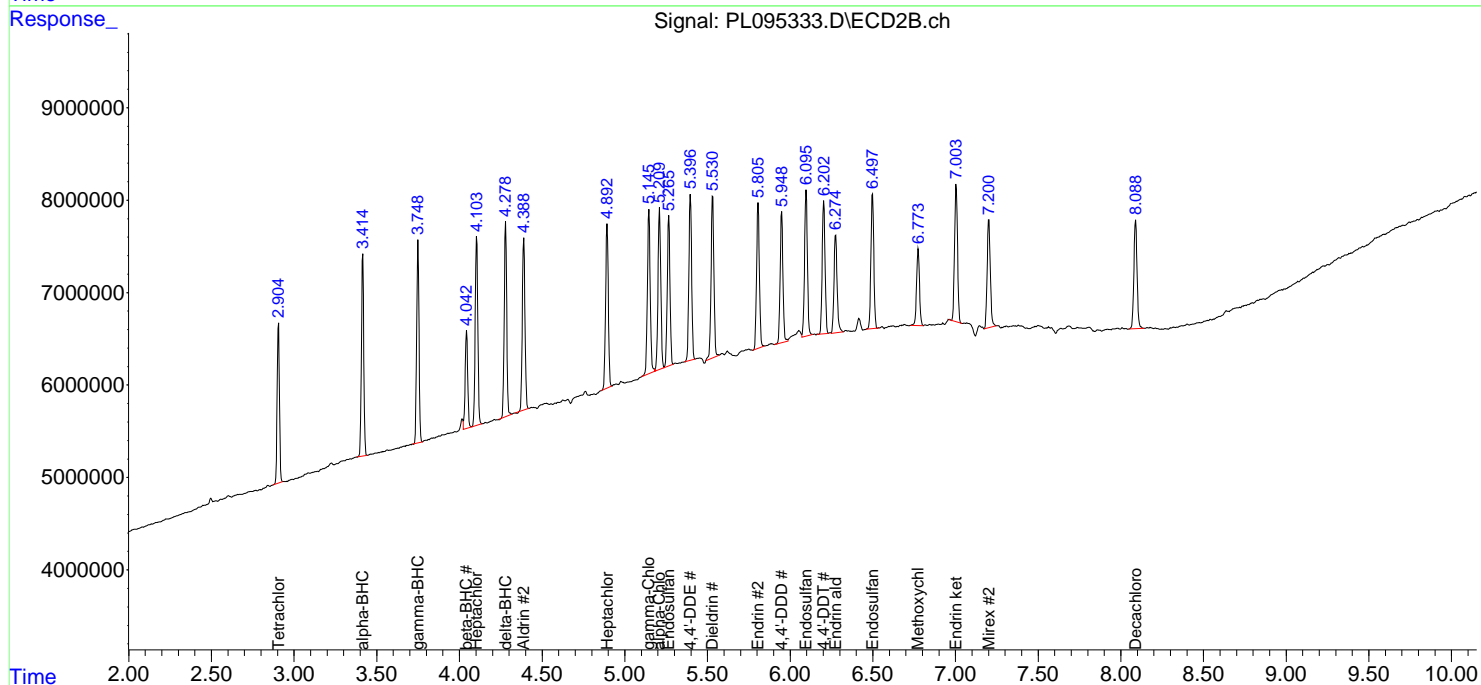
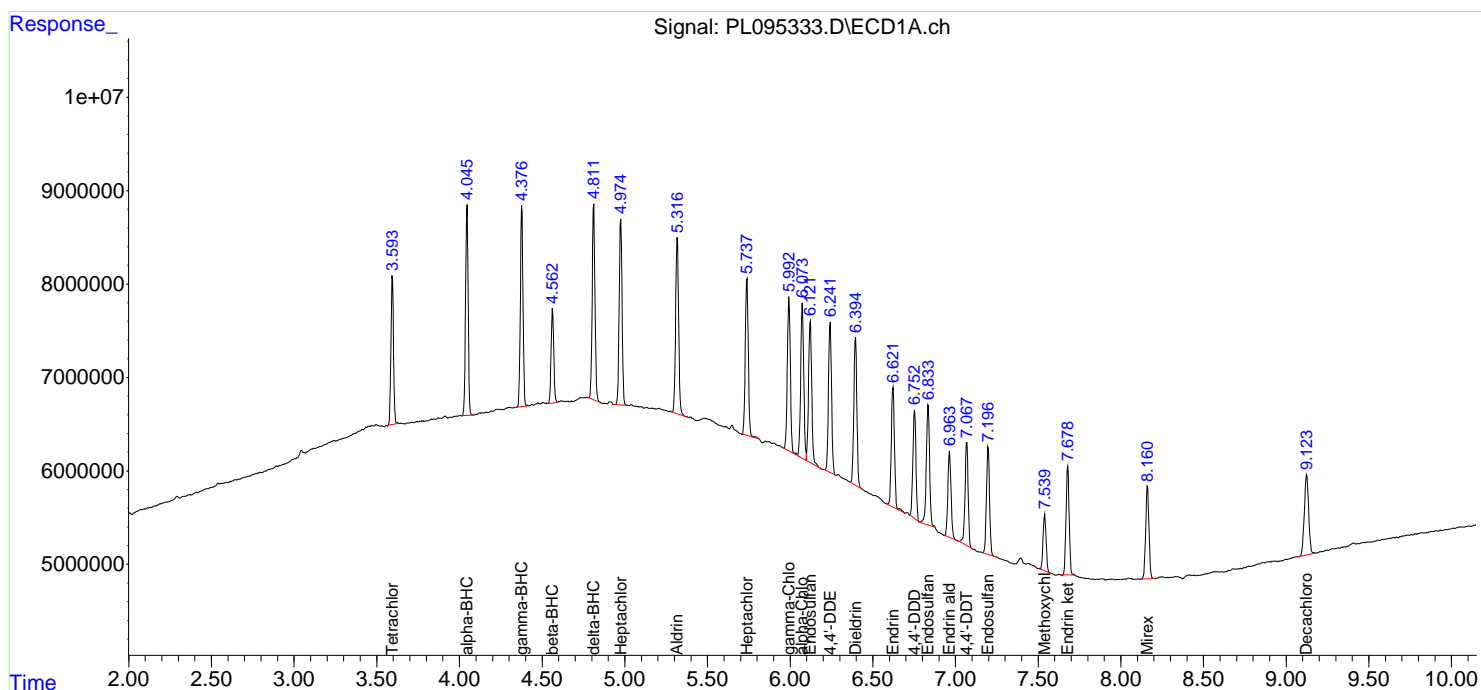
Manual Integrations  
 APPROVED

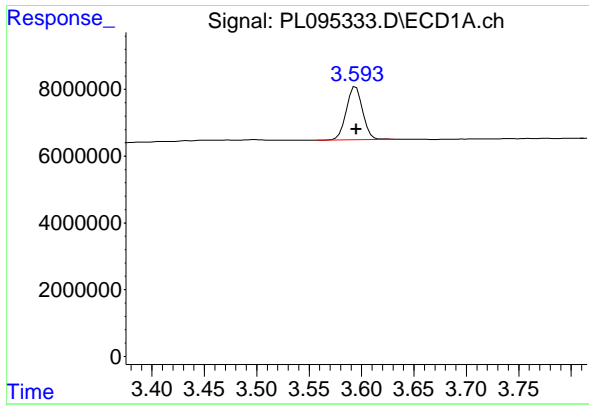
Reviewed By :Abdul Mirza 04/24/2025

Supervised By :mohammad ahmed 04/26/2025

Integration File signal 1: autoint1.e  
 Integration File signal 2: autoint2.e  
 Quant Time: Apr 23 12:35:44 2025  
 Quant Method : Z:\pestpcbsrv\HPCHEM1\ECD\_L\methods\PL042325.M  
 Quant Title : GC Extractables  
 QLast Update : Wed Apr 23 12:35:34 2025  
 Response via : Initial Calibration  
 Integrator: ChemStation

Volume Inj. : 1 µl  
 Signal #1 Phase : ZB-MR1 Signal #2 Phase: ZB-MR2  
 Signal #1 Info : 30M x 0.32mm x0.5 Signal #2 Info : 30M x 0.32mm x0.25µm





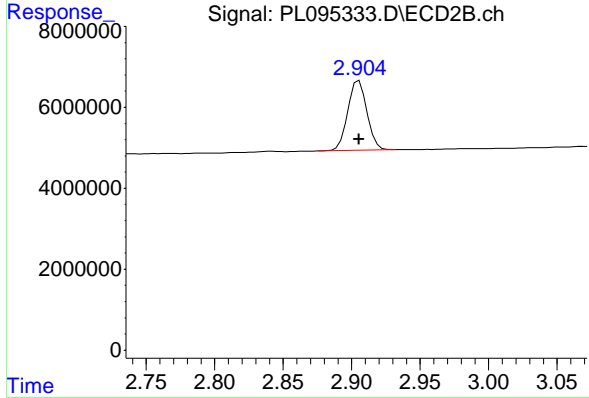
#1 Tetrachloro-m-xylene

R.T.: 3.595 min  
 Delta R.T.: 0.000 min  
 Response: 17226547  
 Conc: 5.28 ng/ml

Instrument : ECD\_L  
 ClientSampleId : PSTDICC005

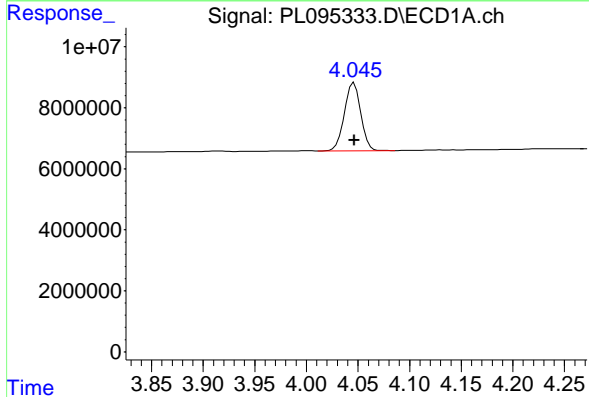
Manual Integrations  
 APPROVED

Reviewed By :Abdul Mirza 04/24/2025  
 Supervised By :mohammad ahmed 04/26/2025



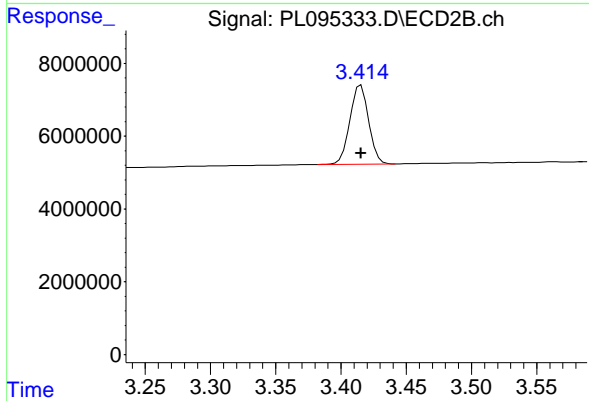
#1 Tetrachloro-m-xylene

R.T.: 2.905 min  
 Delta R.T.: 0.000 min  
 Response: 16774274  
 Conc: 5.28 ng/ml



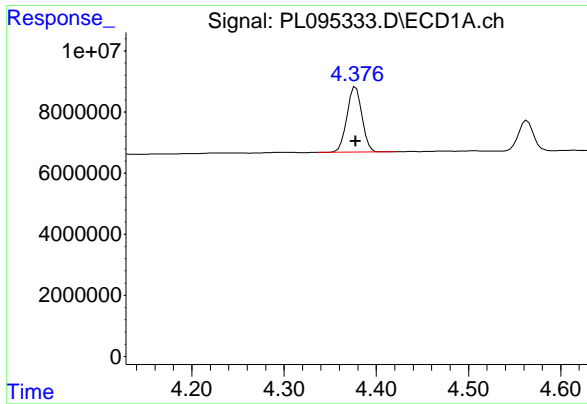
#2 alpha-BHC

R.T.: 4.046 min  
 Delta R.T.: 0.000 min  
 Response: 24630161  
 Conc: 4.97 ng/ml



#2 alpha-BHC

R.T.: 3.415 min  
 Delta R.T.: 0.000 min  
 Response: 21718521  
 Conc: 4.88 ng/ml



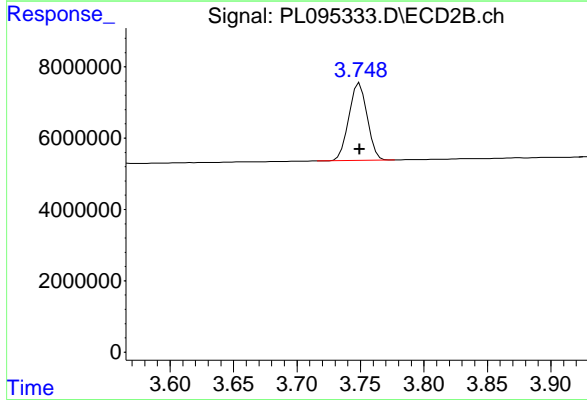
#3 gamma-BHC (Lindane)

R.T.: 4.378 min  
 Delta R.T.: 0.000 min  
 Response: 24047920  
 Conc: 5.08 ng/ml

Instrument : ECD\_L  
 Client Sample Id : PSTDICC005

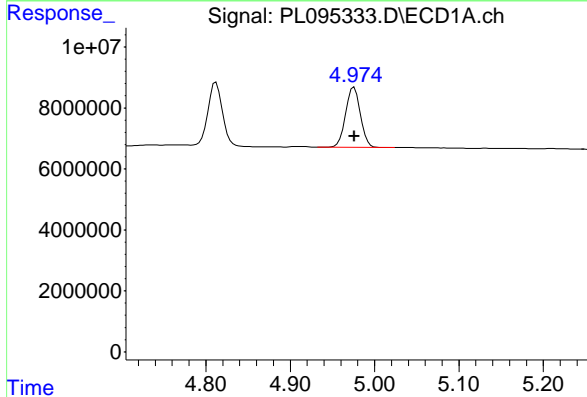
Manual Integrations  
 APPROVED

Reviewed By :Abdul Mirza 04/24/2025  
 Supervised By :mohammad ahmed 04/26/2025



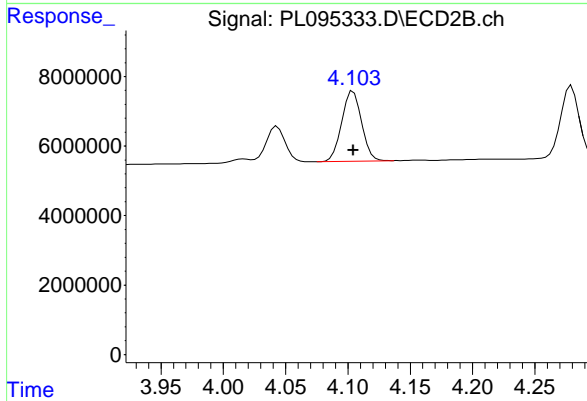
#3 gamma-BHC (Lindane)

R.T.: 3.749 min  
 Delta R.T.: 0.000 min  
 Response: 21843021  
 Conc: 4.97 ng/ml



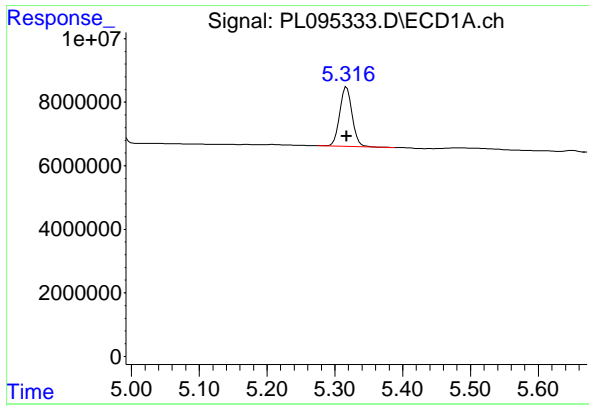
#4 Heptachlor

R.T.: 4.976 min  
 Delta R.T.: 0.000 min  
 Response: 24089854  
 Conc: 5.27 ng/ml



#4 Heptachlor

R.T.: 4.104 min  
 Delta R.T.: 0.000 min  
 Response: 22426031  
 Conc: 5.15 ng/ml



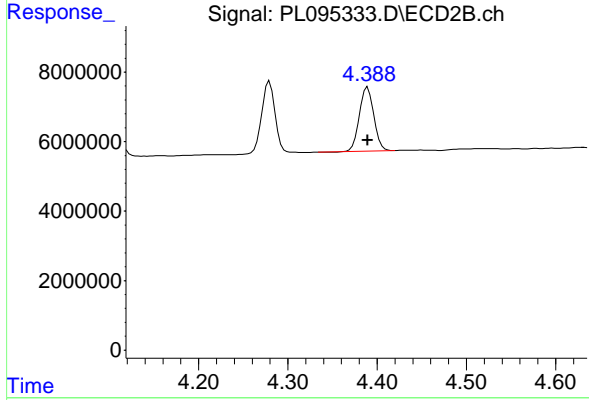
#5 Aldrin

R.T.: 5.317 min  
 Delta R.T.: 0.000 min  
 Response: 23939616  
 Conc: 5.21 ng/ml

Instrument : ECD\_L  
 ClientSampleId : PSTDICC005

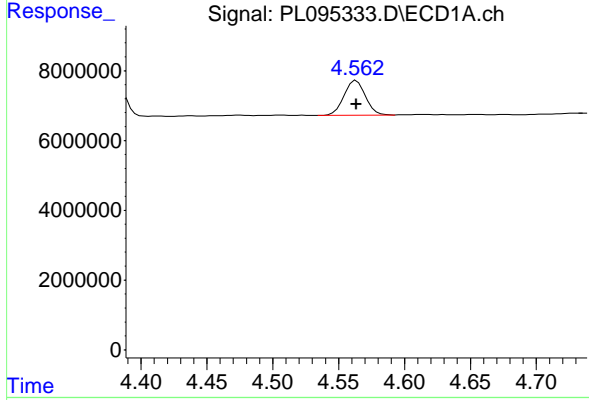
Manual Integrations  
 APPROVED

Reviewed By :Abdul Mirza 04/24/2025  
 Supervised By :mohammad ahmed 04/26/2025



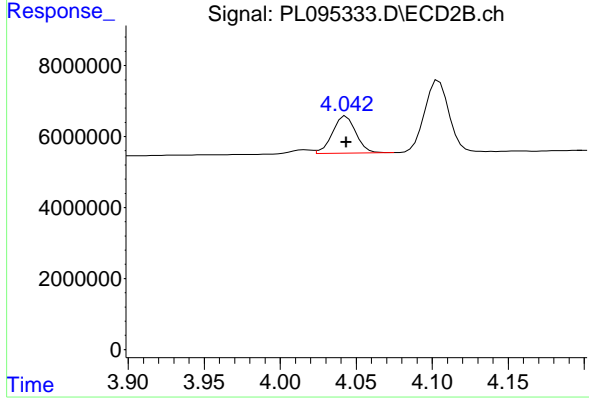
#5 Aldrin

R.T.: 4.389 min  
 Delta R.T.: 0.000 min  
 Response: 20545826  
 Conc: 4.99 ng/ml



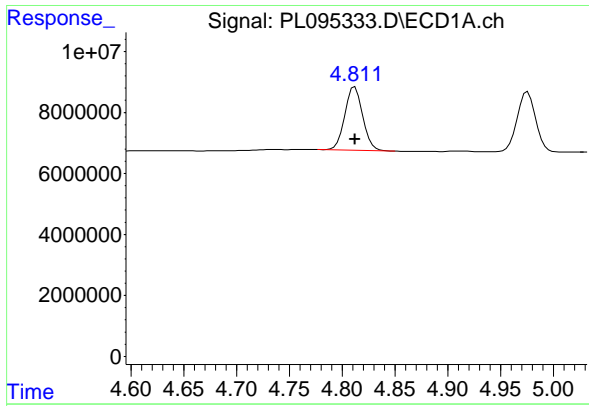
#6 beta-BHC

R.T.: 4.564 min  
 Delta R.T.: 0.000 min  
 Response: 11239021  
 Conc: 5.44 ng/ml



#6 beta-BHC

R.T.: 4.043 min  
 Delta R.T.: 0.000 min  
 Response: 11256224  
 Conc: 5.42 ng/ml



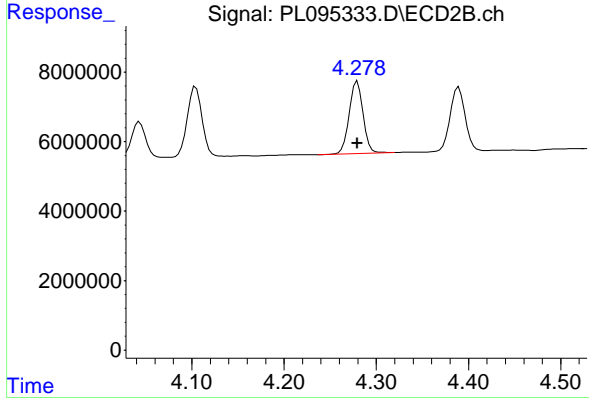
#7 delta-BHC

R.T.: 4.812 min  
 Delta R.T.: 0.000 min  
 Response: 24459248  
 Conc: 5.26 ng/ml

Instrument :  
 ECD\_L  
 ClientSampleId :  
 PSTDICC005

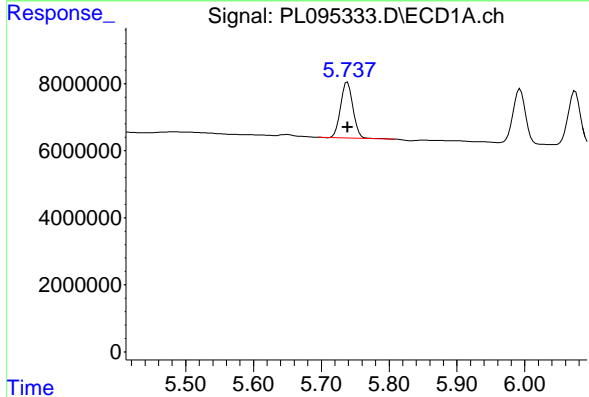
Manual Integrations  
 APPROVED

Reviewed By :Abdul Mirza 04/24/2025  
 Supervised By :mohammad ahmed 04/26/2025



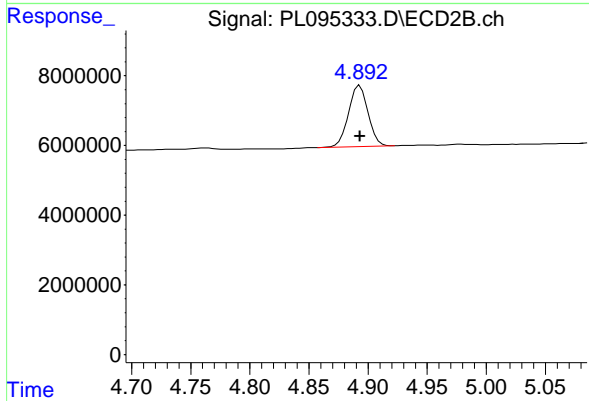
#7 delta-BHC

R.T.: 4.280 min  
 Delta R.T.: 0.000 min  
 Response: 21692758  
 Conc: 4.95 ng/ml



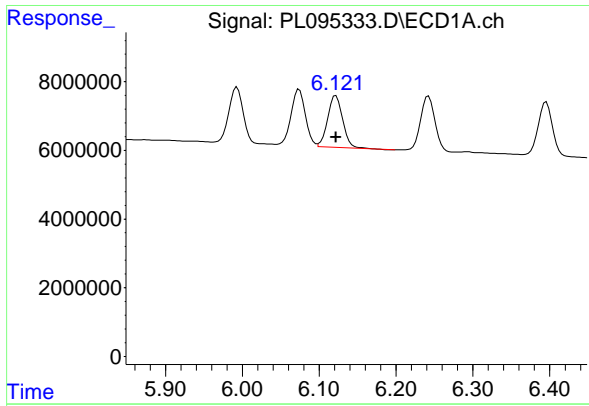
#8 Heptachlor epoxide

R.T.: 5.739 min  
 Delta R.T.: 0.000 min  
 Response: 21350448  
 Conc: 5.33 ng/ml



#8 Heptachlor epoxide

R.T.: 4.893 min  
 Delta R.T.: 0.000 min  
 Response: 20141703  
 Conc: 5.21 ng/ml



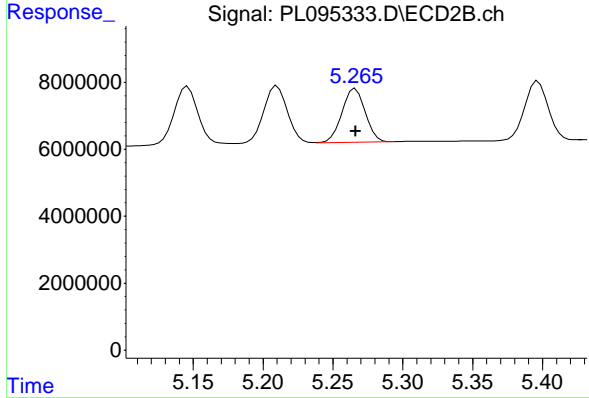
#9 Endosulfan I

R.T.: 6.122 min  
 Delta R.T.: 0.000 min  
 Response: 20308048  
 Conc: 5.35 ng/ml

Instrument : ECD\_L  
 ClientSampleId : PSTDICC005

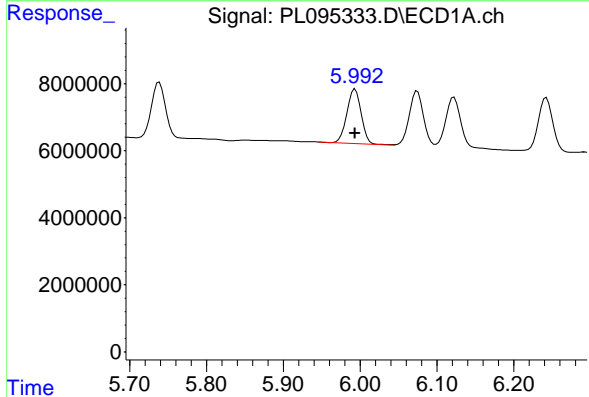
Manual Integrations  
 APPROVED

Reviewed By :Abdul Mirza 04/24/2025  
 Supervised By :mohammad ahmed 04/26/2025



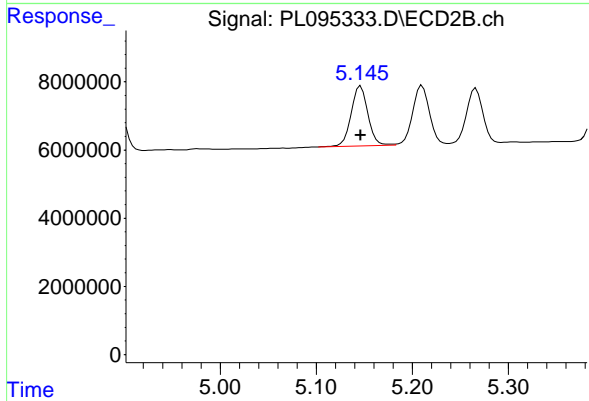
#9 Endosulfan I

R.T.: 5.266 min  
 Delta R.T.: 0.000 min  
 Response: 18652835  
 Conc: 5.10 ng/ml



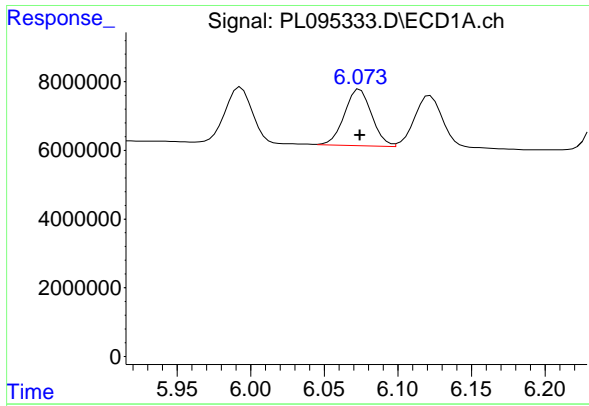
#10 gamma-Chlordane

R.T.: 5.993 min  
 Delta R.T.: 0.000 min  
 Response: 21145113  
 Conc: 5.18 ng/ml



#10 gamma-Chlordane

R.T.: 5.146 min  
 Delta R.T.: 0.000 min  
 Response: 21190077  
 Conc: 5.23 ng/ml



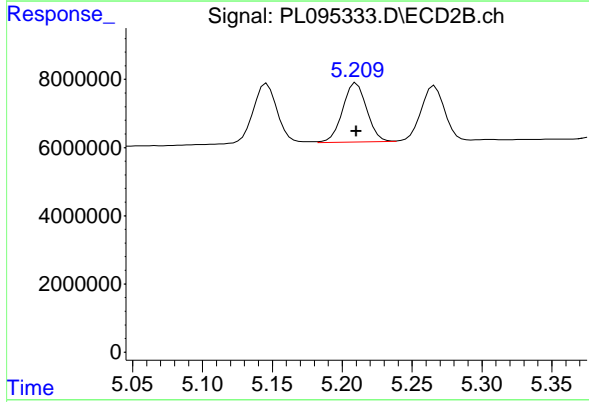
#11 alpha-Chlordane

R.T.: 6.074 min  
 Delta R.T.: 0.000 min  
 Response: 21268601  
 Conc: 5.23 ng/ml

Instrument :  
 ECD\_L  
 ClientSampleId :  
 PSTDICC005

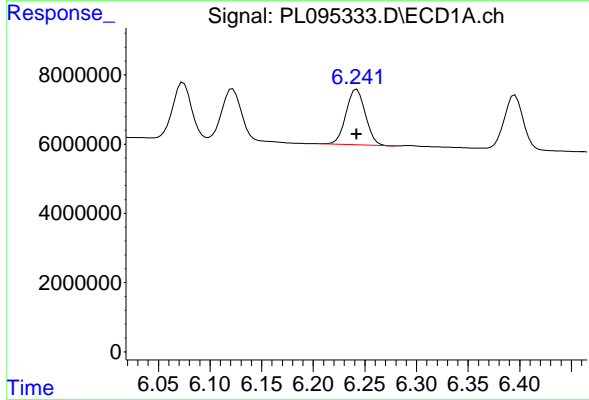
Manual Integrations  
 APPROVED

Reviewed By :Abdul Mirza 04/24/2025  
 Supervised By :mohammad ahmed 04/26/2025



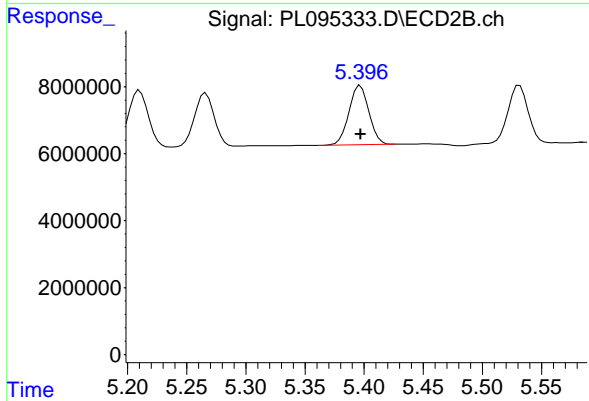
#11 alpha-Chlordane

R.T.: 5.210 min  
 Delta R.T.: 0.000 min  
 Response: 20714715  
 Conc: 5.20 ng/ml



#12 4,4'-DDE

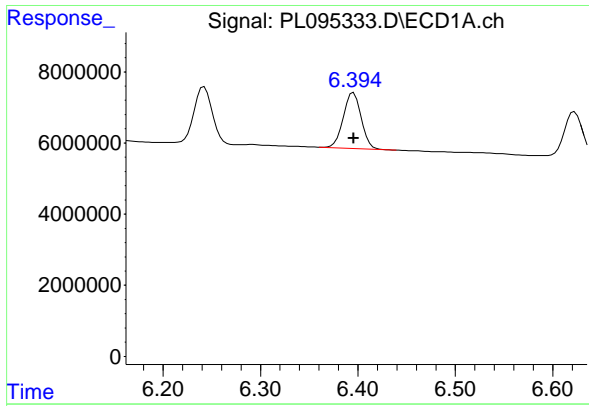
R.T.: 6.242 min  
 Delta R.T.: 0.000 min  
 Response: 20770904  
 Conc: 5.30 ng/ml



#12 4,4'-DDE

R.T.: 5.397 min  
 Delta R.T.: 0.000 min  
 Response: 20747185  
 Conc: 5.10 ng/ml





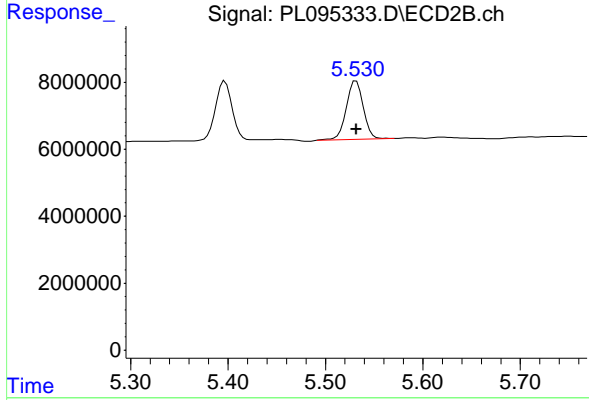
#13 Dieldrin

R.T.: 6.396 min  
 Delta R.T.: 0.000 min  
 Response: 19971571  
 Conc: 5.18 ng/ml

Instrument : ECD\_L  
 ClientSampleId : PSTDICC005

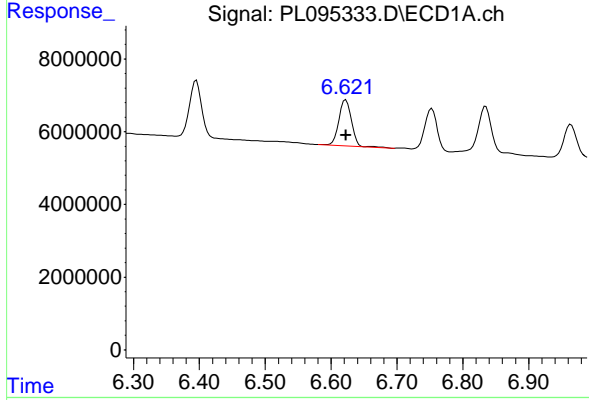
Manual Integrations  
 APPROVED

Reviewed By :Abdul Mirza 04/24/2025  
 Supervised By :mohammad ahmed 04/26/2025



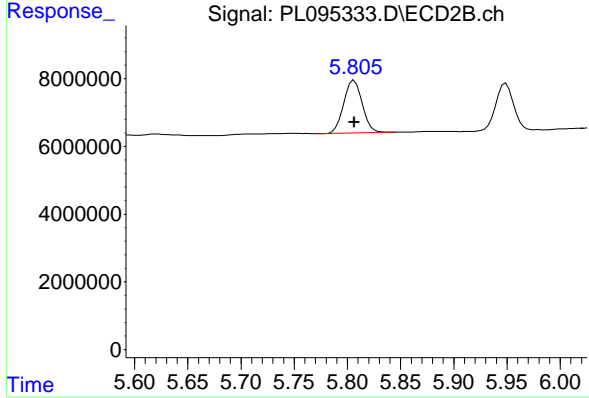
#13 Dieldrin

R.T.: 5.532 min  
 Delta R.T.: 0.000 min  
 Response: 21318751  
 Conc: 5.24 ng/ml



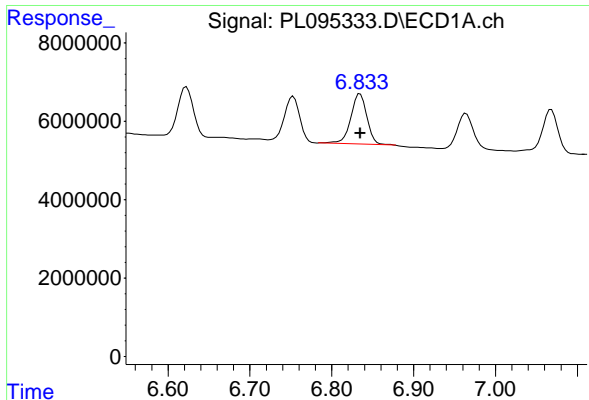
#14 Endrin

R.T.: 6.622 min  
 Delta R.T.: 0.000 min  
 Response: 16946885  
 Conc: 5.32 ng/ml



#14 Endrin

R.T.: 5.806 min  
 Delta R.T.: 0.000 min  
 Response: 18649649  
 Conc: 5.12 ng/ml



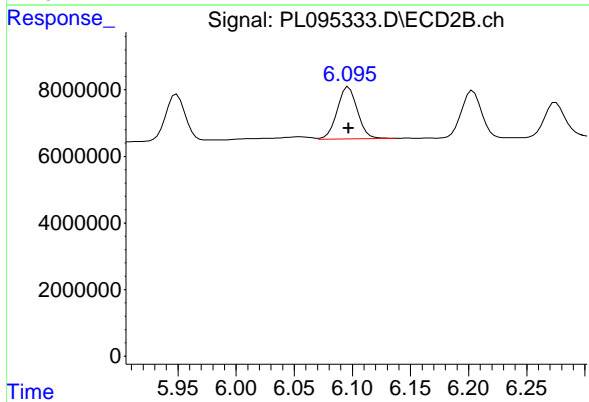
#15 Endosulfan II

R.T.: 6.835 min  
 Delta R.T.: 0.000 min  
 Response: 17567027  
 Conc: 5.50 ng/ml

Instrument : ECD\_L  
 ClientSampleId : PSTDICC005

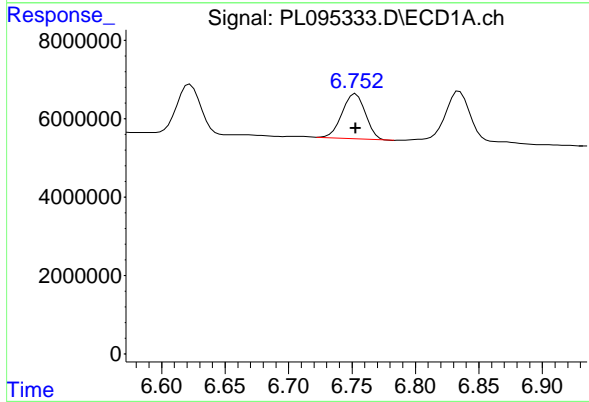
Manual Integrations  
 APPROVED

Reviewed By :Abdul Mirza 04/24/2025  
 Supervised By :mohammad ahmed 04/26/2025



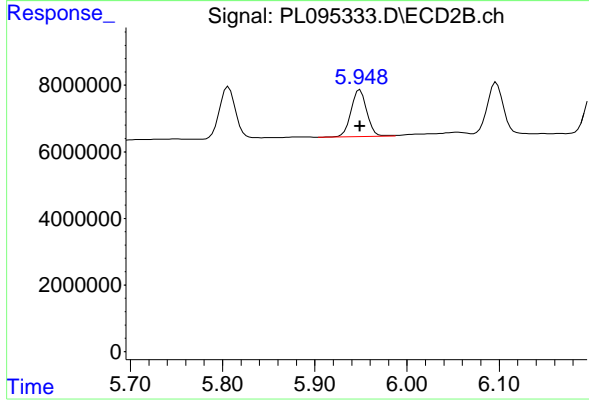
#15 Endosulfan II

R.T.: 6.097 min  
 Delta R.T.: 0.000 min  
 Response: 18938000  
 Conc: 5.27 ng/ml



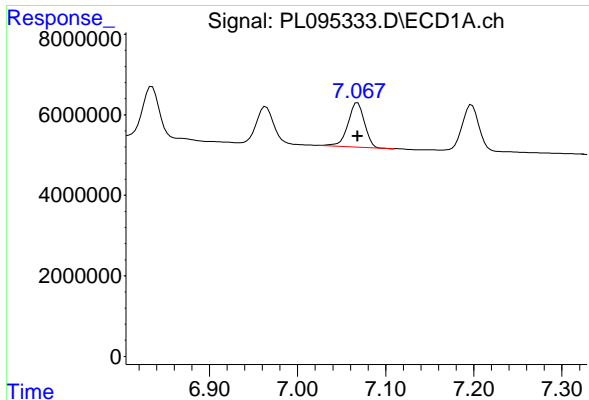
#16 4,4'-DDD

R.T.: 6.753 min  
 Delta R.T.: 0.000 min  
 Response: 14708945  
 Conc: 5.20 ng/ml



#16 4,4'-DDD

R.T.: 5.949 min  
 Delta R.T.: 0.000 min  
 Response: 16655803  
 Conc: 5.10 ng/ml



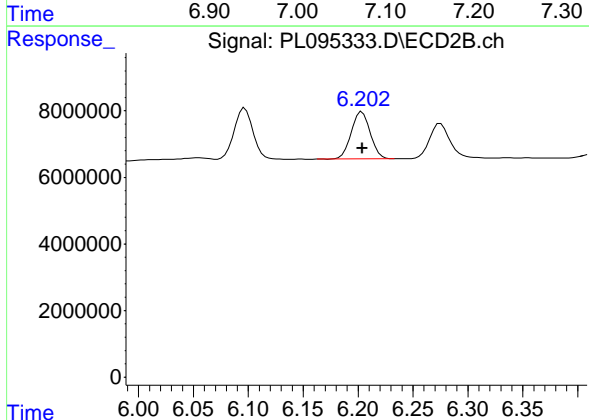
#17 4,4' -DDT

R.T.: 7.068 min  
 Delta R.T.: 0.000 min  
 Response: 14262305  
 Conc: 5.01 ng/ml

Instrument : ECD\_L  
 ClientSampleId : PSTDICC005

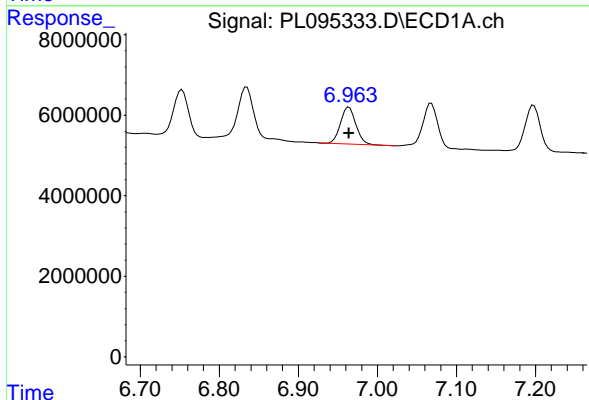
Manual Integrations  
 APPROVED

Reviewed By :Abdul Mirza 04/24/2025  
 Supervised By :mohammad ahmed 04/26/2025



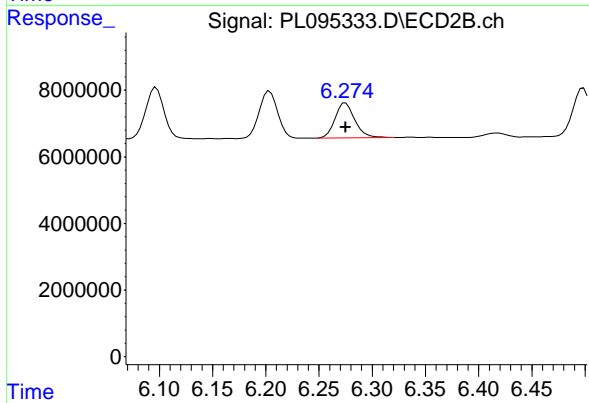
#17 4,4' -DDT

R.T.: 6.204 min  
 Delta R.T.: 0.000 min  
 Response: 17073765  
 Conc: 4.97 ng/ml



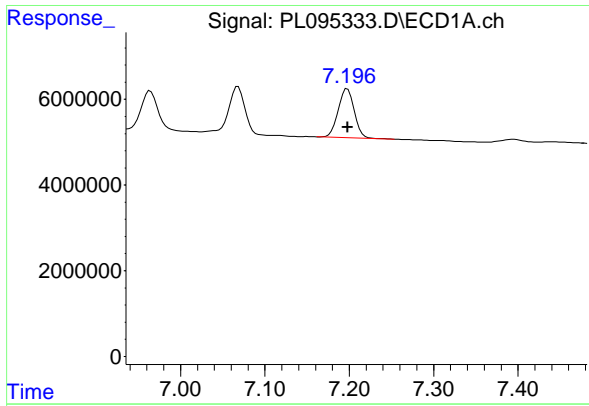
#18 Endrin aldehyde

R.T.: 6.964 min  
 Delta R.T.: 0.000 min  
 Response: 12367450  
 Conc: 5.33 ng/ml



#18 Endrin aldehyde

R.T.: 6.275 min  
 Delta R.T.: 0.000 min  
 Response: 13751187  
 Conc: 5.26 ng/ml



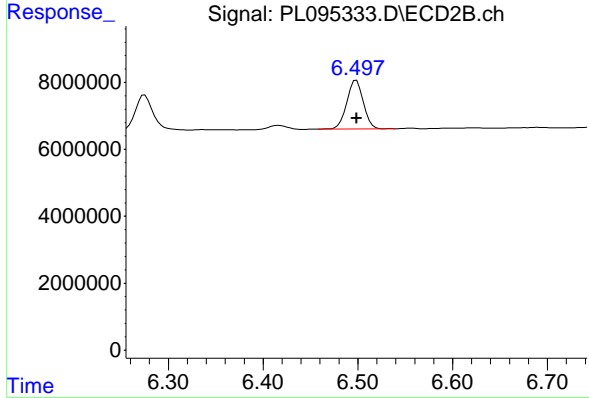
#19 Endosulfan Sulfate

R.T.: 7.198 min  
 Delta R.T.: 0.000 min  
 Response: 15108097  
 Conc: 5.39 ng/ml

Instrument : ECD\_L  
 ClientSampleId : PSTDICC005

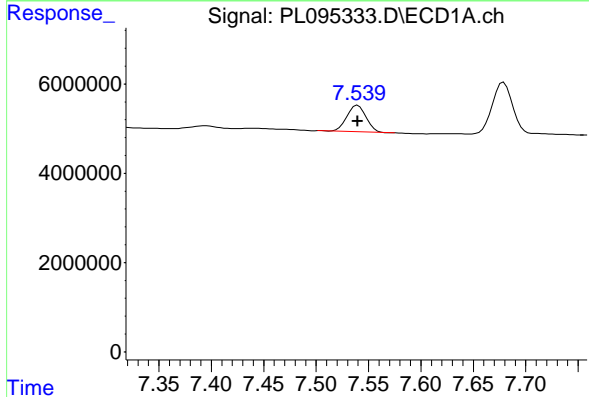
Manual Integrations  
 APPROVED

Reviewed By :Abdul Mirza 04/24/2025  
 Supervised By :mohammad ahmed 04/26/2025



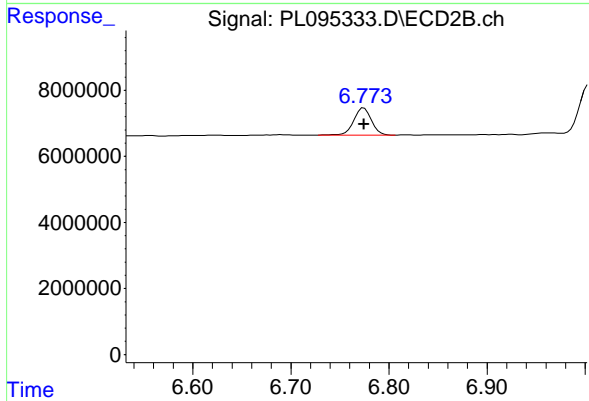
#19 Endosulfan Sulfate

R.T.: 6.498 min  
 Delta R.T.: 0.000 min  
 Response: 17635344  
 Conc: 5.32 ng/ml



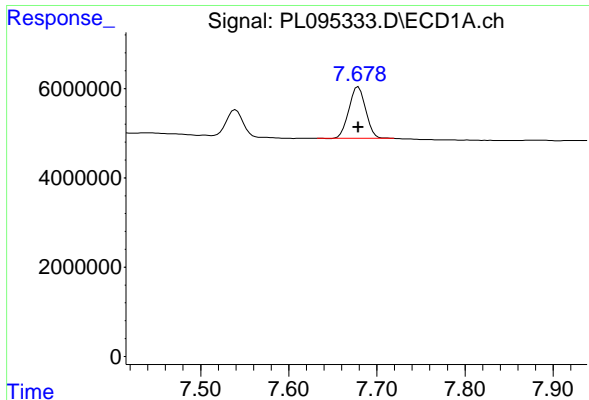
#20 Methoxychlor

R.T.: 7.540 min  
 Delta R.T.: 0.000 min  
 Response: 7589024  
 Conc: 5.44 ng/ml



#20 Methoxychlor

R.T.: 6.774 min  
 Delta R.T.: 0.000 min  
 Response: 10262527  
 Conc: 5.38 ng/ml



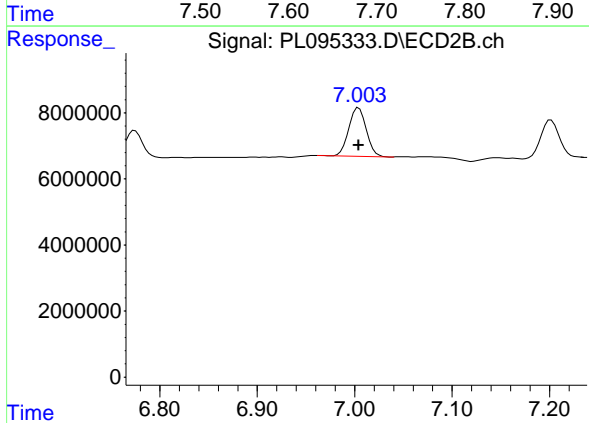
#21 Endrin ketone

R.T.: 7.679 min  
 Delta R.T.: 0.000 min  
 Response: 15300793  
 Conc: 5.37 ng/ml

Instrument : ECD\_L  
 ClientSampleId : PSTDICC005

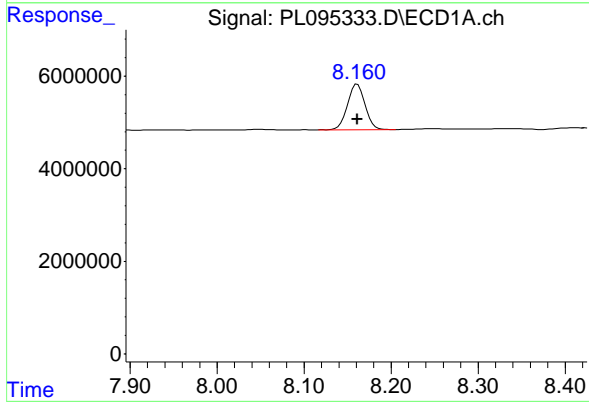
Manual Integrations  
 APPROVED

Reviewed By :Abdul Mirza 04/24/2025  
 Supervised By :mohammad ahmed 04/26/2025



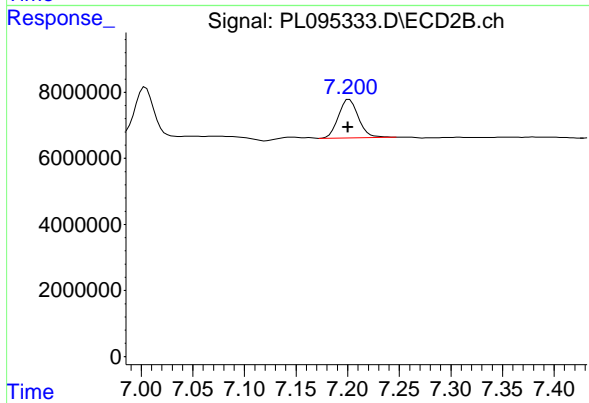
#21 Endrin ketone

R.T.: 7.004 min  
 Delta R.T.: 0.000 min  
 Response: 18268527  
 Conc: 5.19 ng/ml



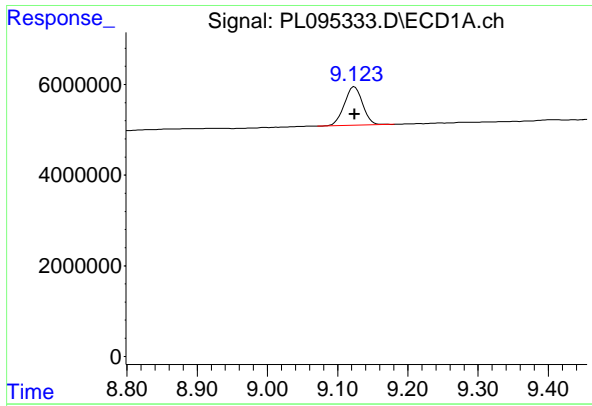
#22 Mirex

R.T.: 8.161 min  
 Delta R.T.: 0.000 min  
 Response: 13844446  
 Conc: 5.83 ng/ml



#22 Mirex

R.T.: 7.200 min  
 Delta R.T.: 0.000 min  
 Response: 15752969  
 Conc: 5.47 ng/ml m



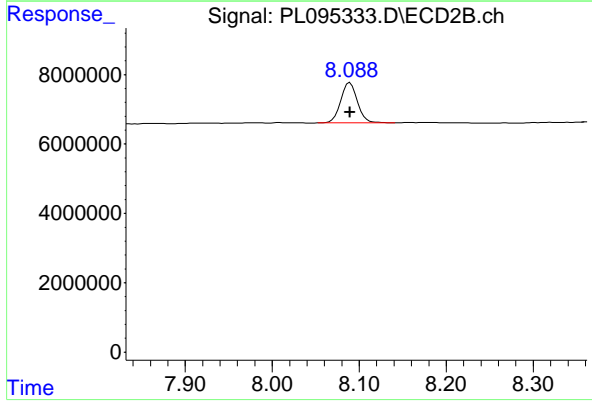
#28 Decachlorobiphenyl

R.T.: 9.124 min  
 Delta R.T.: 0.000 min  
 Response: 15494795  
 Conc: 5.59 ng/ml

Instrument :  
 ECD\_L  
 ClientSampleId :  
 PSTDICC005

Manual Integrations  
 APPROVED

Reviewed By :Abdul Mirza 04/24/2025  
 Supervised By :mohammad ahmed 04/26/2025



#28 Decachlorobiphenyl

R.T.: 8.089 min  
 Delta R.T.: 0.000 min  
 Response: 15593893  
 Conc: 5.27 ng/ml