

Data Path : Z:\pestpcbsrv\HPCHEM1\ECD_L\Data\PL042325\
 Data File : PL095336.D
 Signal(s) : Signal #1: ECD1A.ch Signal #2: ECD2B.ch
 Acq On : 23 Apr 2025 13:07
 Operator : AR\AJ
 Sample : PCHLORICC500
 Misc :
 ALS Vial : 12 Sample Multiplier: 1

Instrument :
 ECD_L
 ClientSampleId :
 PCHLORICC500

Integration File signal 1: autoint1.e
 Integration File signal 2: autoint2.e
 Quant Time: Apr 23 13:18:41 2025
 Quant Method : Z:\pestpcbsrv\HPCHEM1\ECD_L\methods\PL042325.M
 Quant Title : GC Extractables
 QLast Update : Wed Apr 23 13:16:48 2025
 Response via : Initial Calibration
 Integrator: ChemStation

Volume Inj. : 1 µl
 Signal #1 Phase : ZB-MR1 Signal #2 Phase: ZB-MR2
 Signal #1 Info : 30M x 0.32mm x0.5 Signal #2 Info : 30M x 0.32mm x0.25µm

Compound	RT#1	RT#2	Resp#1	Resp#2	ng/ml	ng/ml

System Monitoring Compounds						
1) SA Tetrachlo...	3.595	2.906	161.9E6	195.6E6	50.000	50.000
28) SA Decachlor...	9.123	8.089	135.2E6	145.1E6	50.000	50.000
Target Compounds						
23) Chlordane-1	4.762	3.926	98361472	76159147	500.000	500.000
24) Chlordane-2	5.288	4.508	106.9E6	90786464	500.000	500.000
25) Chlordane-3	5.994	5.146	390.5E6	258.0E6	500.000	500.000
26) Chlordane-4	6.079	5.210	472.5E6	216.5E6	500.000	500.000
27) Chlordane-5	6.919	6.106	74901227	91342128	500.000	500.000

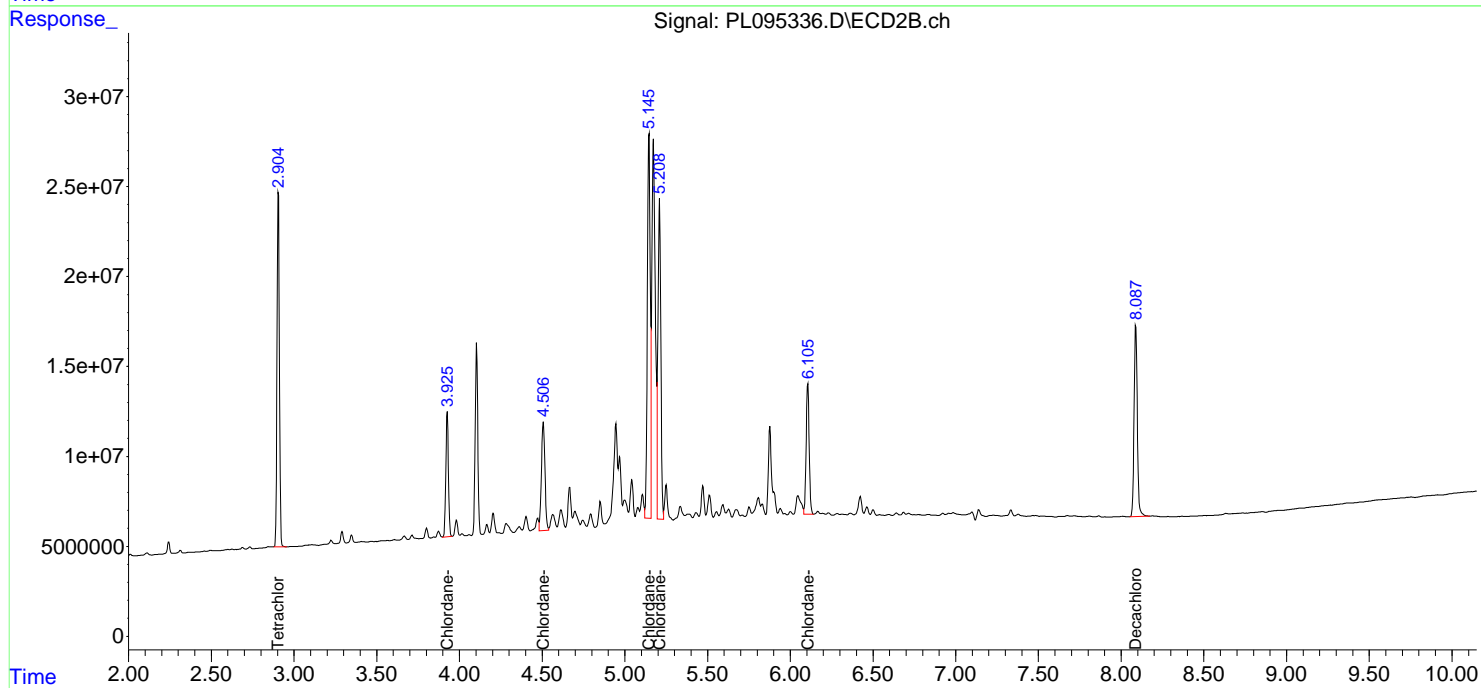
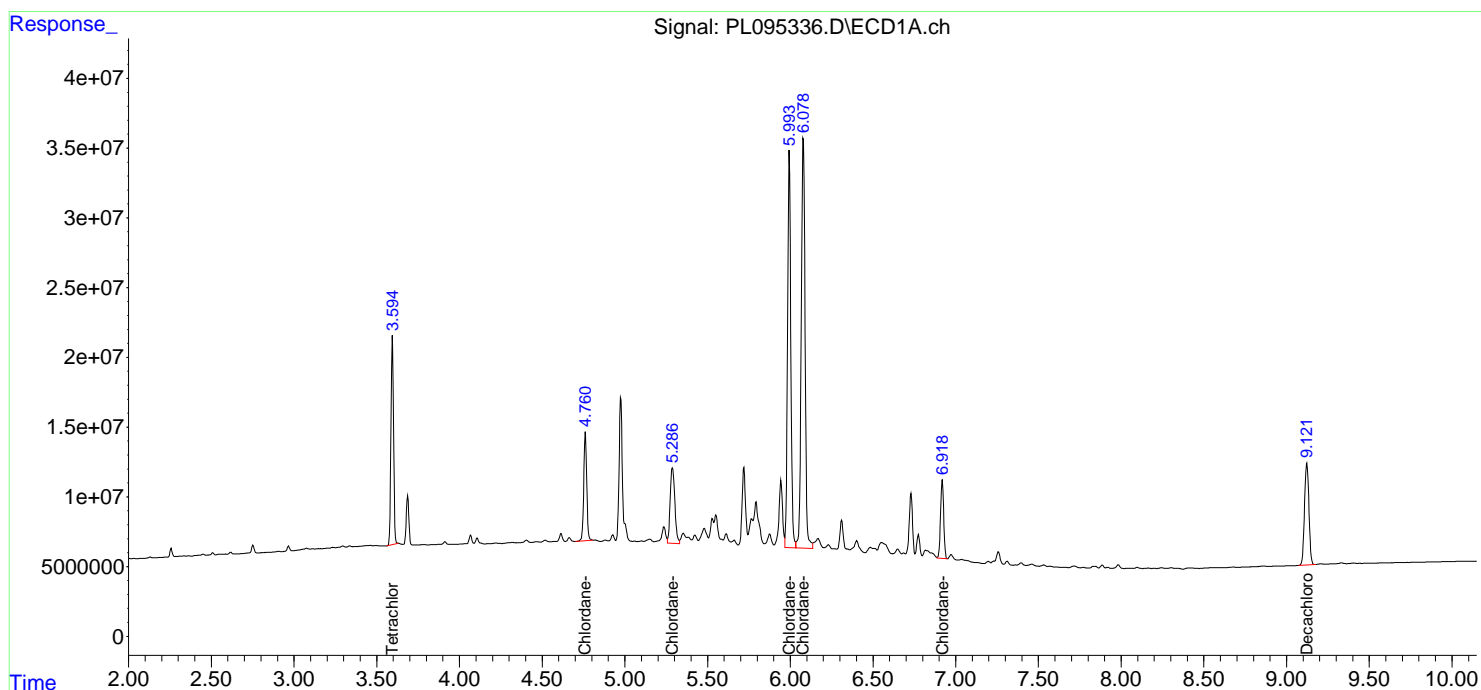
(f)=RT Delta > 1/2 Window (#)=Amounts differ by > 25% (m)=manual int.

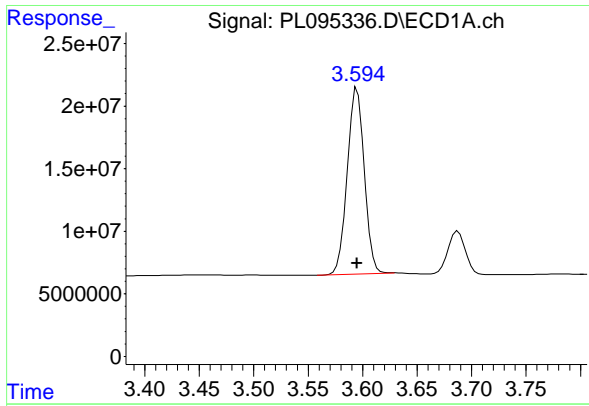
Data Path : Z:\pestpcbsrv\HPCHEM1\ECD_L\Data\PL042325\
 Data File : PL095336.D
 Signal(s) : Signal #1: ECD1A.ch Signal #2: ECD2B.ch
 Acq On : 23 Apr 2025 13:07
 Operator : AR\AJ
 Sample : PCHLORICC500
 Misc :
 ALS Vial : 12 Sample Multiplier: 1

Instrument :
 ECD_L
 ClientSampleId :
 PCHLORICC500

Integration File signal 1: autoint1.e
 Integration File signal 2: autoint2.e
 Quant Time: Apr 23 13:18:41 2025
 Quant Method : Z:\pestpcbsrv\HPCHEM1\ECD_L\methods\PL042325.M
 Quant Title : GC Extractables
 QLast Update : Wed Apr 23 13:16:48 2025
 Response via : Initial Calibration
 Integrator: ChemStation

Volume Inj. : 1 µl
 Signal #1 Phase : ZB-MR1 Signal #2 Phase: ZB-MR2
 Signal #1 Info : 30M x 0.32mm x0.5 Signal #2 Info : 30M x 0.32mm x0.25µm

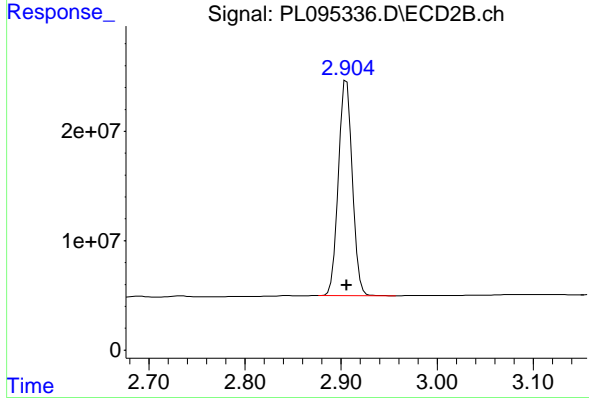




#1 Tetrachloro-m-xylene

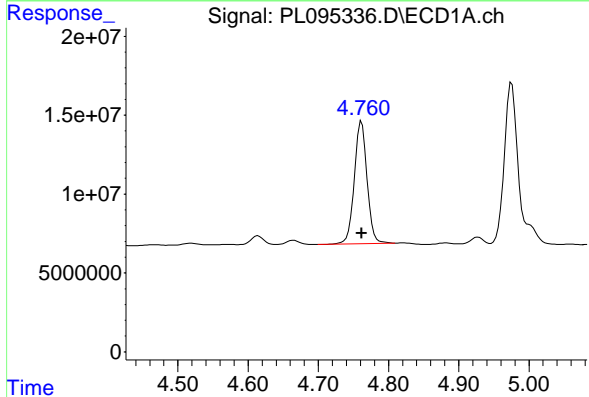
R.T.: 3.595 min
 Delta R.T.: 0.000 min
 Response: 161889270
 Conc: 50.00 ng/ml

Instrument :
 ECD_L
 ClientSampleId :
 PCHLORICC500



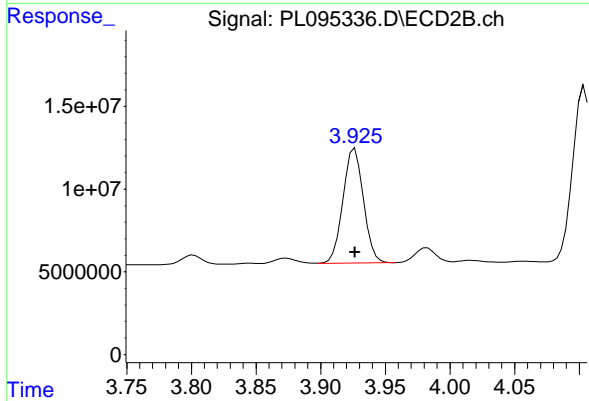
#1 Tetrachloro-m-xylene

R.T.: 2.906 min
 Delta R.T.: 0.000 min
 Response: 195640523
 Conc: 50.00 ng/ml



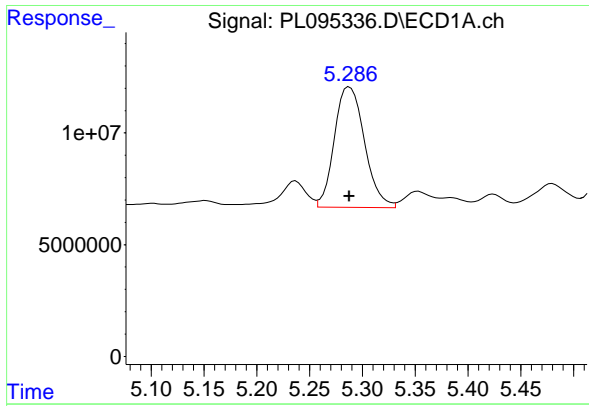
#23 Chlordane-1

R.T.: 4.762 min
 Delta R.T.: 0.000 min
 Response: 98361472
 Conc: 500.00 ng/ml



#23 Chlordane-1

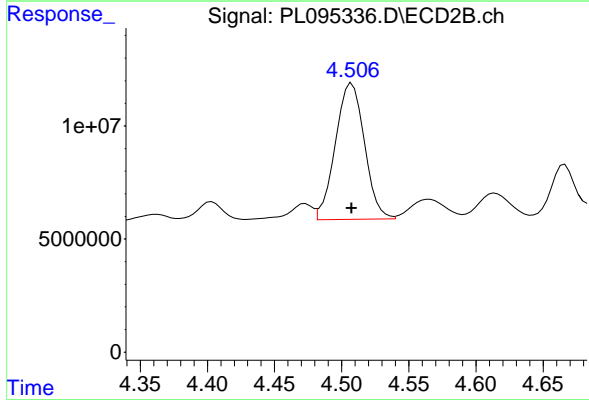
R.T.: 3.926 min
 Delta R.T.: 0.000 min
 Response: 76159147
 Conc: 500.00 ng/ml



#24 Chlordane-2

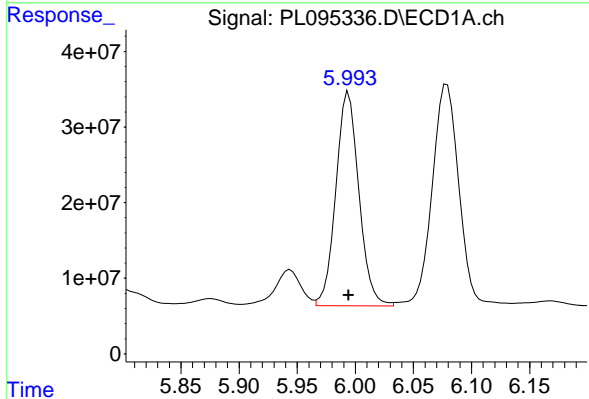
R.T.: 5.288 min
 Delta R.T.: 0.000 min
 Response: 106912869
 Conc: 500.00 ng/ml

Instrument :
 ECD_L
 ClientSampleId :
 PCHLORICC500



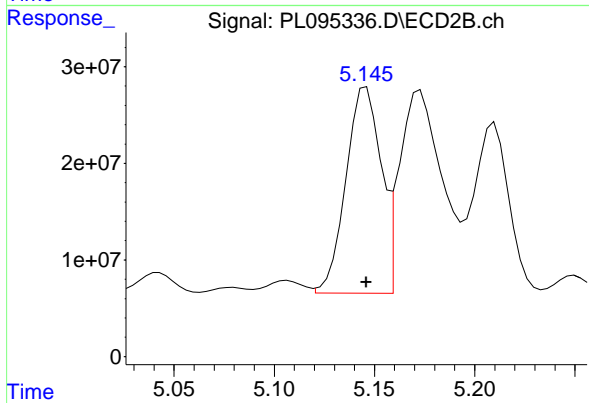
#24 Chlordane-2

R.T.: 4.508 min
 Delta R.T.: 0.000 min
 Response: 90786464
 Conc: 500.00 ng/ml



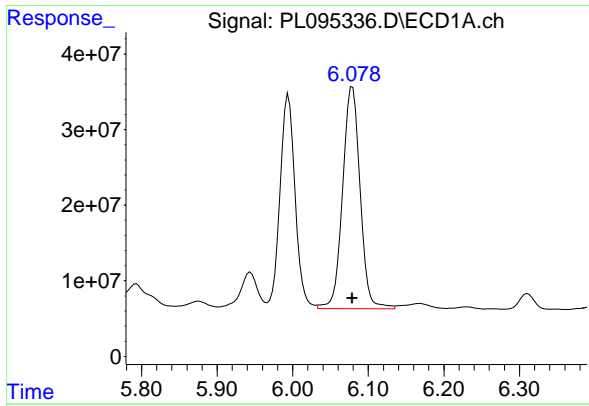
#25 Chlordane-3

R.T.: 5.994 min
 Delta R.T.: 0.000 min
 Response: 390489339
 Conc: 500.00 ng/ml



#25 Chlordane-3

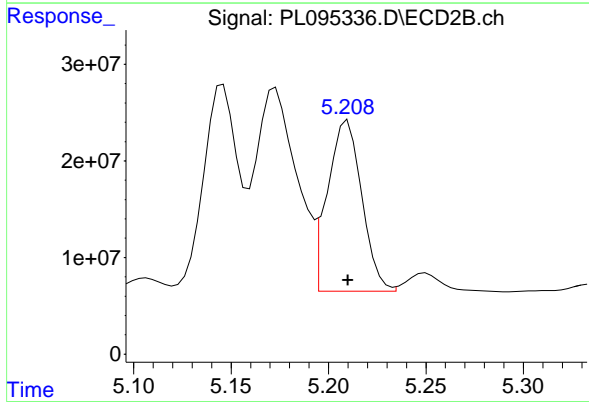
R.T.: 5.146 min
 Delta R.T.: 0.000 min
 Response: 258034387
 Conc: 500.00 ng/ml



#26 Chlordane-4

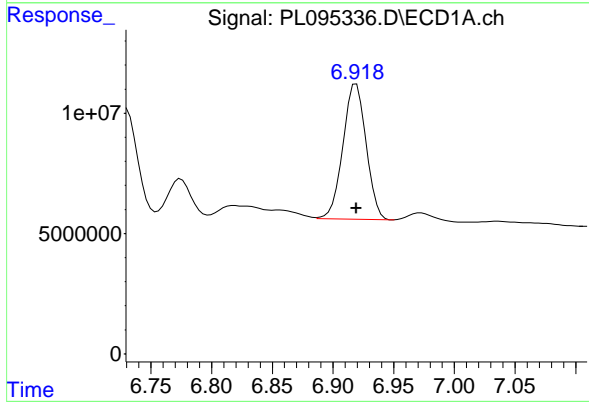
R.T.: 6.079 min
 Delta R.T.: 0.000 min
 Response: 472546188
 Conc: 500.00 ng/ml

Instrument :
 ECD_L
 ClientSampleId :
 PCHLORICC500



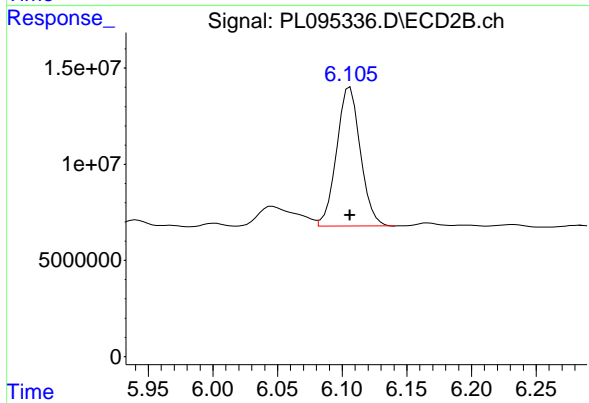
#26 Chlordane-4

R.T.: 5.210 min
 Delta R.T.: 0.000 min
 Response: 216529044
 Conc: 500.00 ng/ml



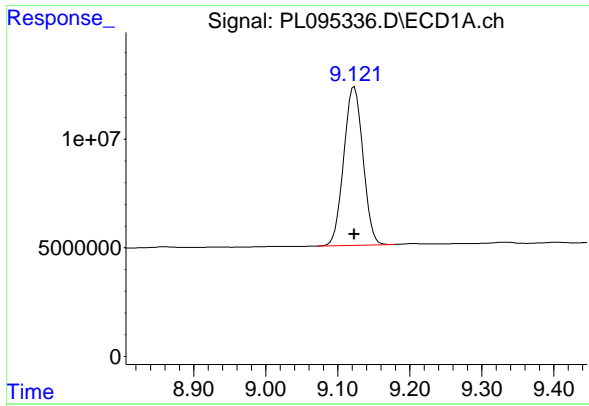
#27 Chlordane-5

R.T.: 6.919 min
 Delta R.T.: 0.000 min
 Response: 74901227
 Conc: 500.00 ng/ml



#27 Chlordane-5

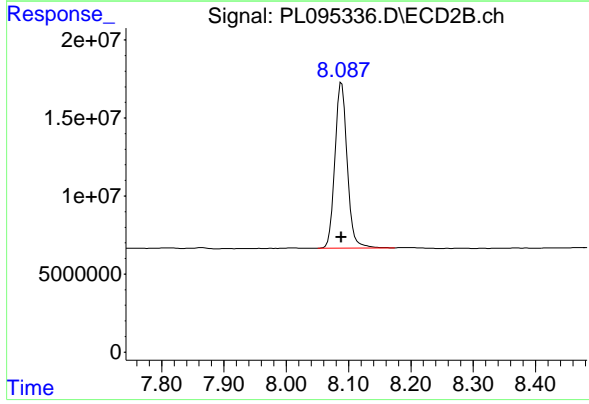
R.T.: 6.106 min
 Delta R.T.: 0.000 min
 Response: 91342128
 Conc: 500.00 ng/ml



#28 Decachlorobiphenyl

R.T.: 9.123 min
Delta R.T.: 0.000 min
Response: 135170504
Conc: 50.00 ng/ml

Instrument :
ECD_L
ClientSampleId :
PCHLORICC500



#28 Decachlorobiphenyl

R.T.: 8.089 min
Delta R.T.: 0.000 min
Response: 145132044
Conc: 50.00 ng/ml