

Data Path : Z:\pestpcbsrv\HPCHEM1\ECD_L\Data\PL042325\
 Data File : PL095341.D
 Signal(s) : Signal #1: ECD1A.ch Signal #2: ECD2B.ch
 Acq On : 23 Apr 2025 14:32
 Operator : AR\AJ
 Sample : PTOXICC500
 Misc :
 ALS Vial : 17 Sample Multiplier: 1

Instrument :
 ECD_L
 ClientSampleId :
 PTOXICC500

Integration File signal 1: autoint1.e
 Integration File signal 2: autoint2.e
 Quant Time: Apr 23 14:41:50 2025
 Quant Method : Z:\pestpcbsrv\HPCHEM1\ECD_L\methods\LTX042325.M
 Quant Title : GC Extractables
 QLast Update : Wed Apr 23 14:41:36 2025
 Response via : Initial Calibration
 Integrator: ChemStation

Volume Inj. : 2 µl
 Signal #1 Phase : Rtx-CLPesticide 1 Signal #2 Phase: Rtx-CLPesticide 1
 Signal #1 Info : 30M x 0.32mm x0.3 Signal #2 Info : 30M x 0.32mm x 0.25µm

| Compound | RT#1 | RT#2 | Resp#1 | Resp#2 | ng/ml | ng/ml |
|-----------------------------|-------|-------|----------|----------|---------|---------|
| ----- | | | | | | |
| System Monitoring Compounds | | | | | | |
| 1) SA Tetrachlo... | 3.594 | 2.905 | 170.6E6 | 165.2E6 | 50.000 | 50.000 |
| 7) SA Decachlor... | 9.120 | 8.087 | 144.3E6 | 152.4E6 | 50.000 | 50.000 |
| Target Compounds | | | | | | |
| 2) Toxaphene-1 | 6.288 | 5.165 | 14117602 | 12301124 | 500.000 | 500.000 |
| 3) Toxaphene-2 | 6.488 | 5.493 | 19710754 | 11783269 | 500.000 | 500.000 |
| 4) Toxaphene-3 | 7.102 | 5.853 | 48154475 | 12799809 | 500.000 | 500.000 |
| 5) Toxaphene-4 | 7.194 | 6.770 | 35158460 | 38422565 | 500.000 | 500.000 |
| 6) Toxaphene-5 | 7.974 | 7.211 | 24549107 | 27736717 | 500.000 | 500.000 |
| ----- | | | | | | |

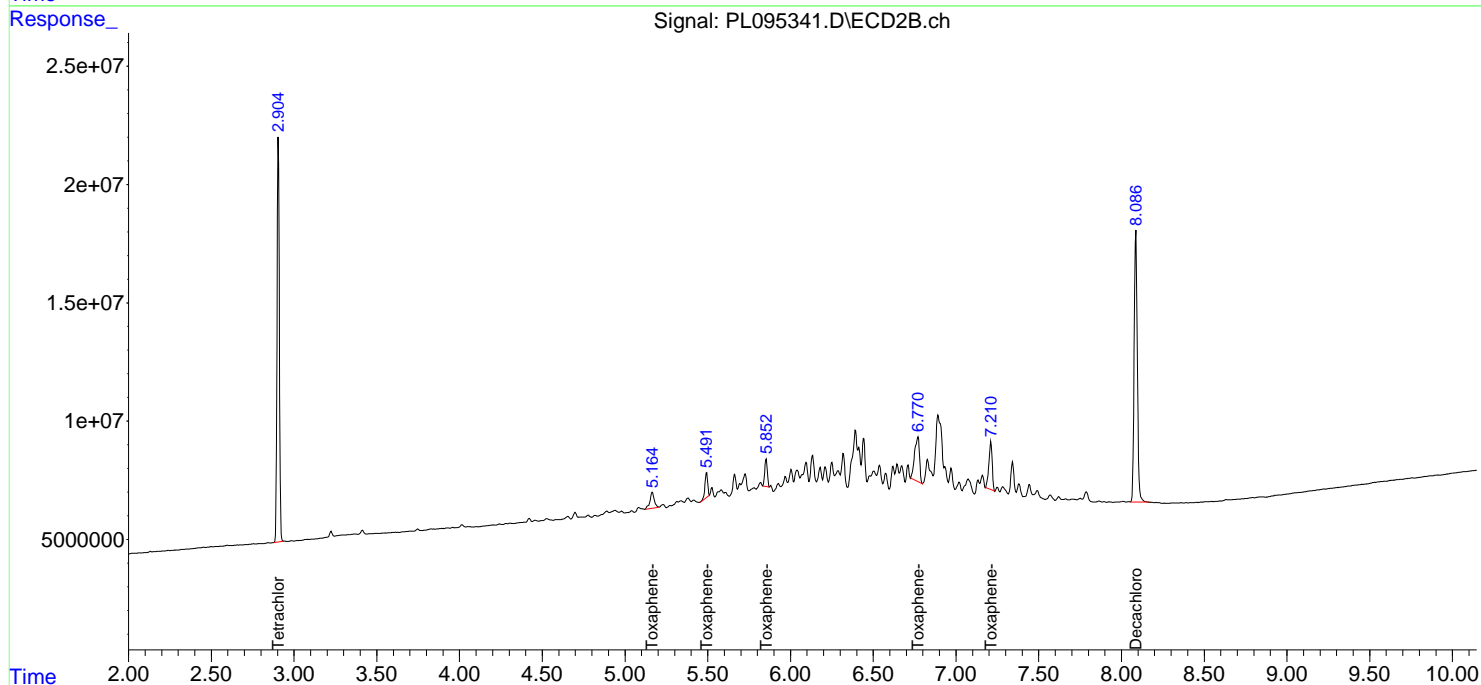
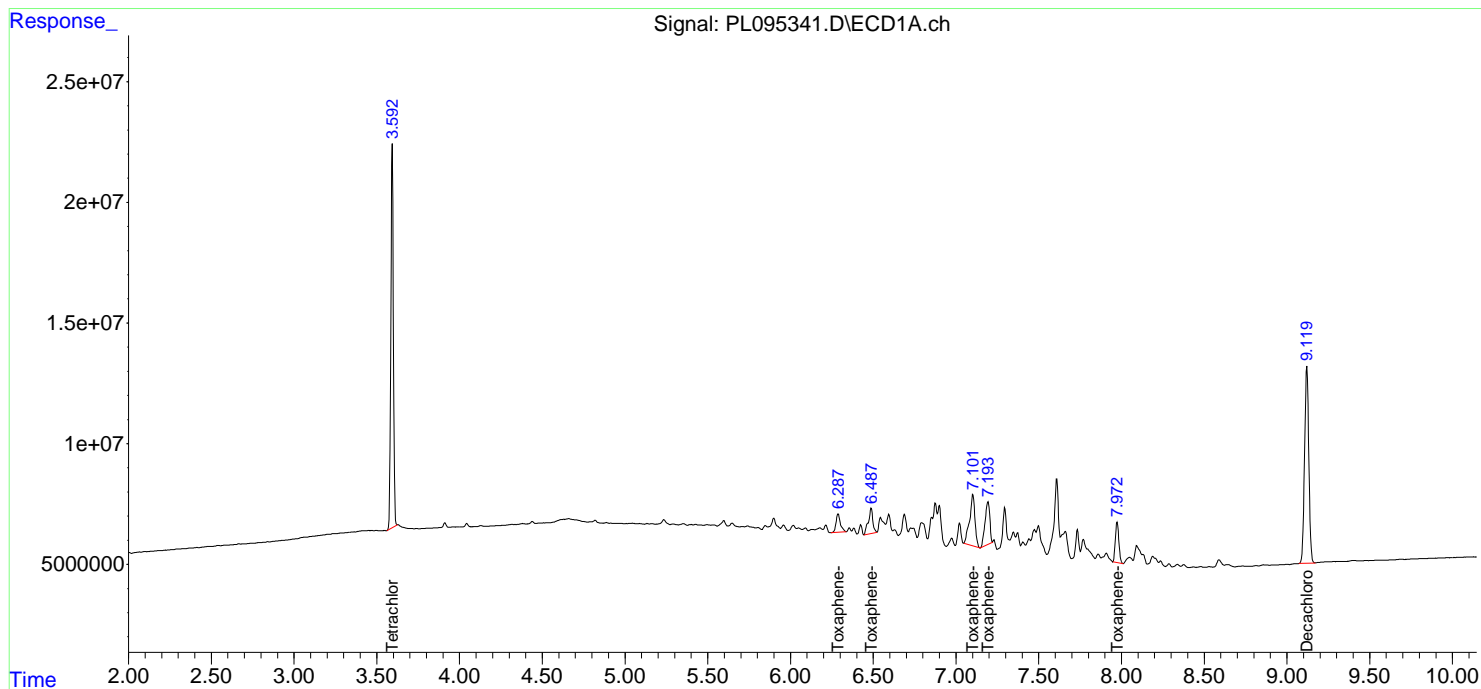
(f)=RT Delta > 1/2 Window (#)=Amounts differ by > 25% (m)=manual int.

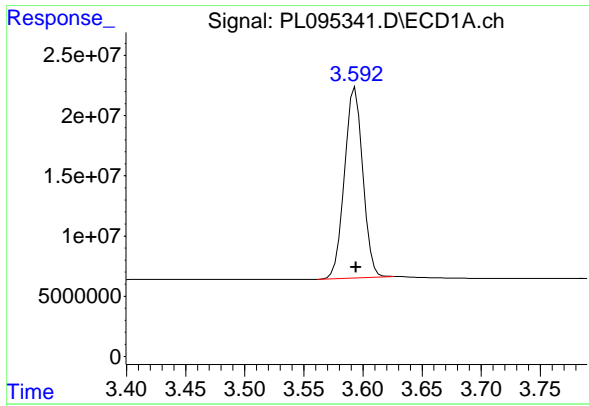
Data Path : Z:\pestpcbsrv\HPCHEM1\ECD_L\Data\PL042325\
 Data File : PL095341.D
 Signal(s) : Signal #1: ECD1A.ch Signal #2: ECD2B.ch
 Acq On : 23 Apr 2025 14:32
 Operator : AR\AJ
 Sample : PTOXICC500
 Misc :
 ALS Vial : 17 Sample Multiplier: 1

Instrument :
 ECD_L
 ClientSampleId :
 PTOXICC500

Integration File signal 1: autoint1.e
 Integration File signal 2: autoint2.e
 Quant Time: Apr 23 14:41:50 2025
 Quant Method : Z:\pestpcbsrv\HPCHEM1\ECD_L\methods\LTX042325.M
 Quant Title : GC Extractables
 QLast Update : Wed Apr 23 14:41:36 2025
 Response via : Initial Calibration
 Integrator: ChemStation

Volume Inj. : 2 µl
 Signal #1 Phase : Rtx-CLPesticide 1 Signal #2 Phase: Rtx-CLPesticide 1
 Signal #1 Info : 30M x 0.32mm x 0.3 Signal #2 Info : 30M x 0.32mm x 0.25µm

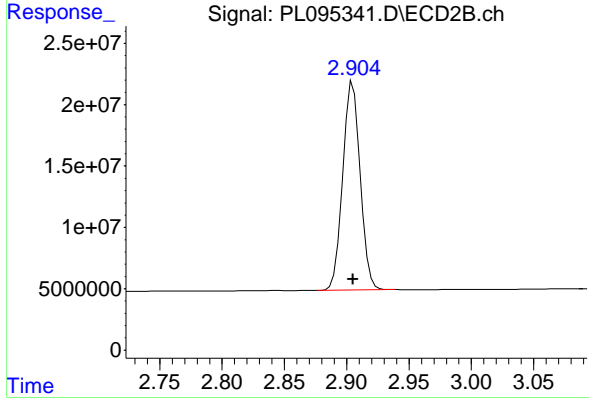




#1 Tetrachloro-m-xylene

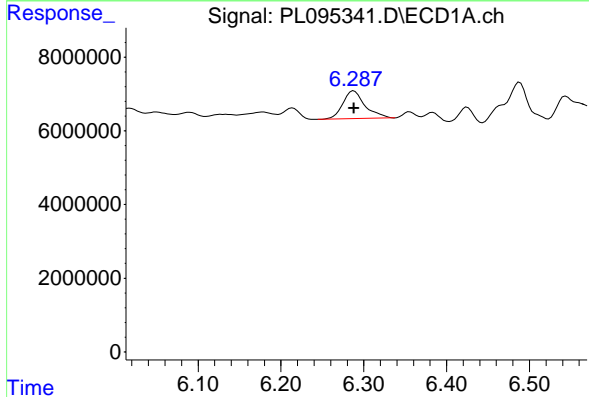
R.T.: 3.594 min
 Delta R.T.: 0.000 min
 Response: 170571762
 Conc: 50.00 ng/ml

Instrument : ECD_L
 ClientSampleId : PTOXICC500



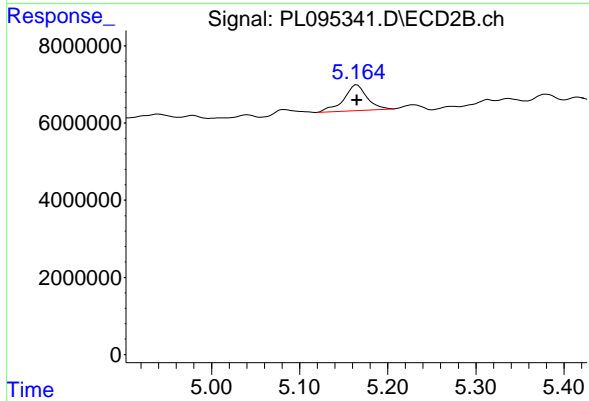
#1 Tetrachloro-m-xylene

R.T.: 2.905 min
 Delta R.T.: 0.000 min
 Response: 165170069
 Conc: 50.00 ng/ml



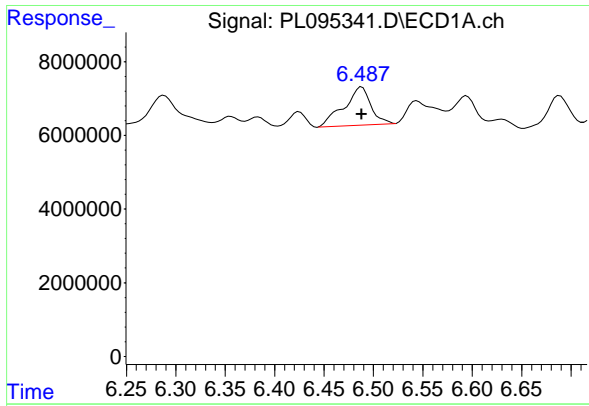
#2 Toxaphene-1

R.T.: 6.288 min
 Delta R.T.: 0.000 min
 Response: 14117602
 Conc: 500.00 ng/ml



#2 Toxaphene-1

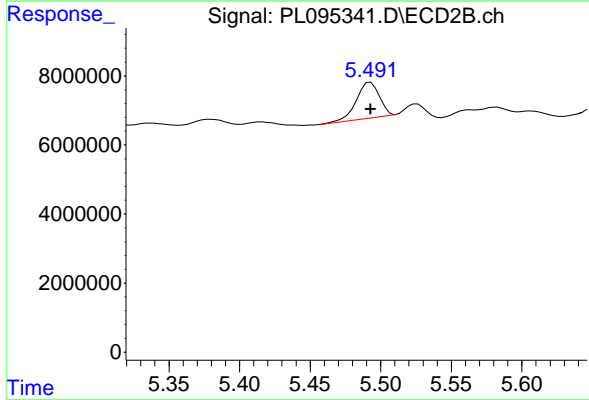
R.T.: 5.165 min
 Delta R.T.: 0.000 min
 Response: 12301124
 Conc: 500.00 ng/ml



#3 Toxaphene-2

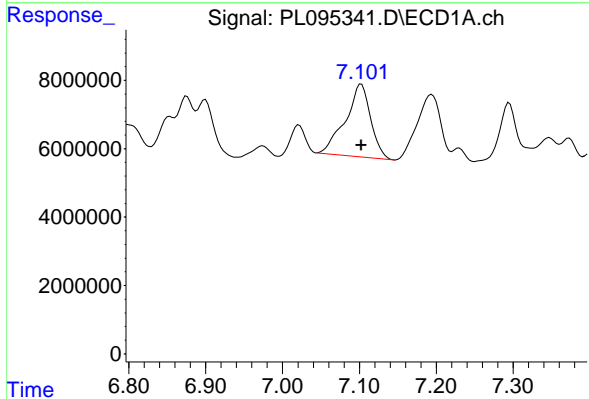
R.T.: 6.488 min
 Delta R.T.: 0.000 min
 Response: 19710754
 Conc: 500.00 ng/ml

Instrument :
 ECD_L
 ClientSampleId :
 PTOXICC500



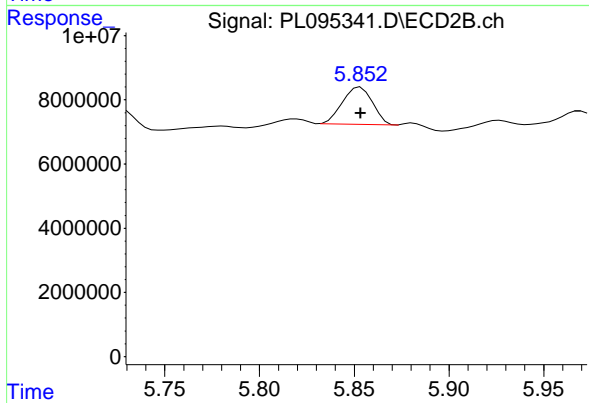
#3 Toxaphene-2

R.T.: 5.493 min
 Delta R.T.: 0.000 min
 Response: 11783269
 Conc: 500.00 ng/ml



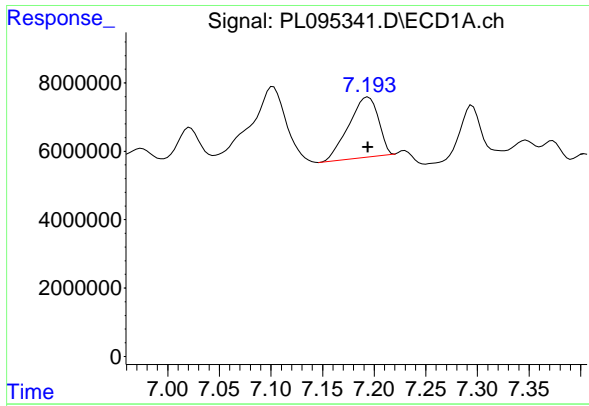
#4 Toxaphene-3

R.T.: 7.102 min
 Delta R.T.: 0.000 min
 Response: 48154475
 Conc: 500.00 ng/ml



#4 Toxaphene-3

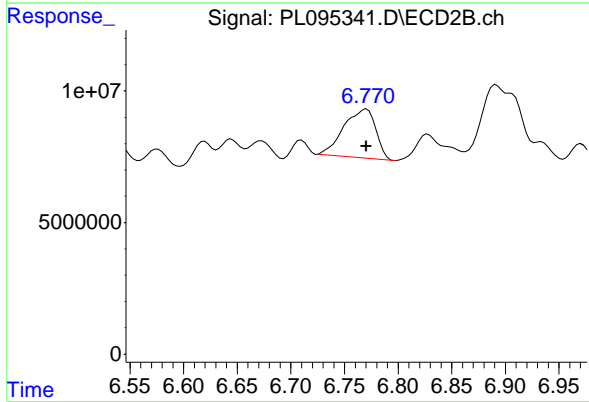
R.T.: 5.853 min
 Delta R.T.: 0.000 min
 Response: 12799809
 Conc: 500.00 ng/ml



#5 Toxaphene-4

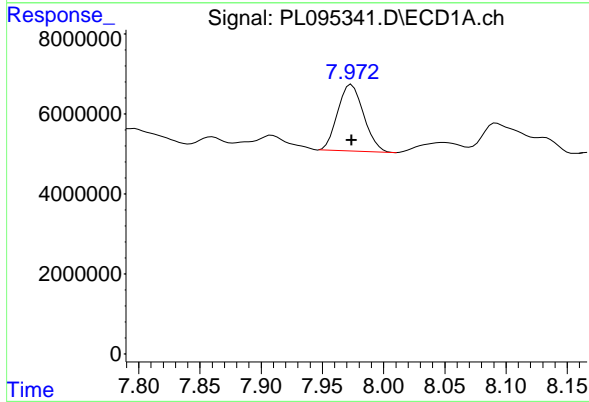
R.T.: 7.194 min
 Delta R.T.: 0.000 min
 Response: 35158460
 Conc: 500.00 ng/ml

Instrument :
 ECD_L
 ClientSampleId :
 PTOXICC500



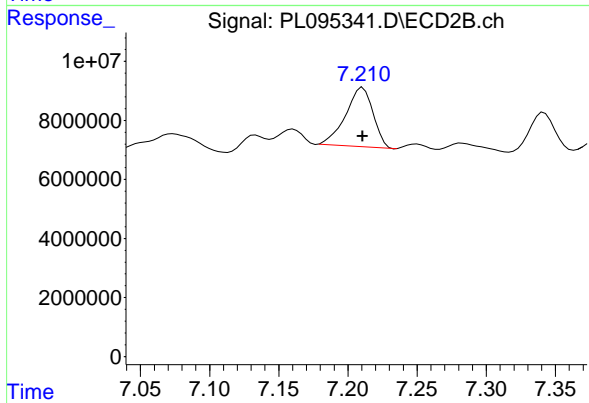
#5 Toxaphene-4

R.T.: 6.770 min
 Delta R.T.: 0.000 min
 Response: 38422565
 Conc: 500.00 ng/ml



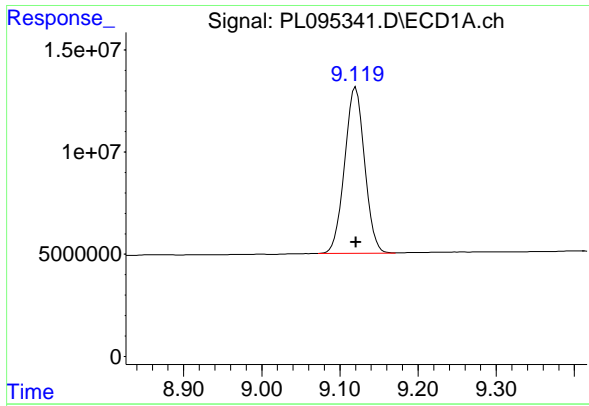
#6 Toxaphene-5

R.T.: 7.974 min
 Delta R.T.: 0.000 min
 Response: 24549107
 Conc: 500.00 ng/ml



#6 Toxaphene-5

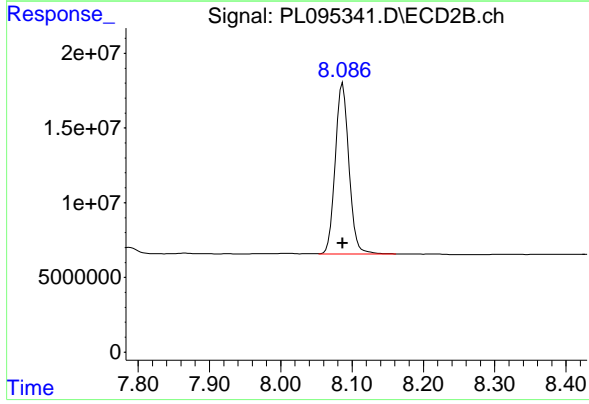
R.T.: 7.211 min
 Delta R.T.: 0.000 min
 Response: 27736717
 Conc: 500.00 ng/ml



#7 Decachlorobiphenyl

R.T.: 9.120 min
Delta R.T.: 0.000 min
Response: 144271987
Conc: 50.00 ng/ml

Instrument :
ECD_L
ClientSampleId :
PTOXICC500



#7 Decachlorobiphenyl

R.T.: 8.087 min
Delta R.T.: 0.000 min
Response: 152410533
Conc: 50.00 ng/ml