

Data Path : Z:\pestpcbsrv\HPCHEM1\ECD_L\Data\PL042325\
 Data File : PL095346.D
 Signal(s) : Signal #1: ECD1A.ch Signal #2: ECD2B.ch
 Acq On : 23 Apr 2025 16:24
 Operator : AR\AJ
 Sample : PTOXICV500
 Misc :
 ALS Vial : 22 Sample Multiplier: 1

Instrument :
 ECD_L
 ClientSampleId :
 ICVPL042325TOX

Integration File signal 1: autoint1.e
 Integration File signal 2: autoint2.e
 Quant Time: Apr 23 16:36:23 2025
 Quant Method : Z:\pestpcbsrv\HPCHEM1\ECD_L\methods\PL042325.M
 Quant Title : GC Extractables
 QLast Update : Wed Apr 23 14:07:39 2025
 Response via : Initial Calibration
 Integrator: ChemStation

Volume Inj. : 1 µl
 Signal #1 Phase : ZB-MR1 Signal #2 Phase: ZB-MR2
 Signal #1 Info : 30M x 0.32mm x0.5 Signal #2 Info : 30M x 0.32mm x0.25µm

Compound	RT#1	RT#2	Resp#1	Resp#2	ng/ml	ng/ml

System Monitoring Compounds						
1) SA Tetrachlo...	3.593	2.904	175.0E6	172.3E6	53.598	54.186
28) SA Decachlor...	9.120	8.086	148.2E6	156.4E6	53.491	52.867
Target Compounds						
10) B gamma-Chl...	0.000	5.164f	0	12806257	N.D.	3.160 #
13) MA Dieldrin	6.425f	0.000	3967075	0	1.029	N.D. #
14) MA Endrin	6.594f	0.000	18777861	0	5.896	N.D. #
15) B Endosulfa...	6.853f	6.093	13207389	14589555	4.137	4.063
16) A 4,4'-DDD	0.000	5.968f	0	6419026	N.D.	1.965 #
17) MA 4,4'-DDT	0.000	6.209	0	7493461	N.D.	2.181 #
18) B Endrin al...	6.975	6.249f	4872365	11819263	2.099	4.523 #
19) B Endosulfa...	7.194	6.503	31364239	2407823	11.194	0.726 #
20) A Methoxychlor	0.000	6.769	0	48316325	N.D.	25.331 #
21) B Endrin ke...	7.662f	0.000	20669859	0	7.250	N.D. #
22) Mirex	0.000	7.209	0	34826728	N.D.	12.083 #
25) Chlordane-3	0.000	5.164f	0	12806257	N.D.	24.788 #
27) Chlordane-5	6.899f	6.093	24624356	14589555	162.444	78.974 #

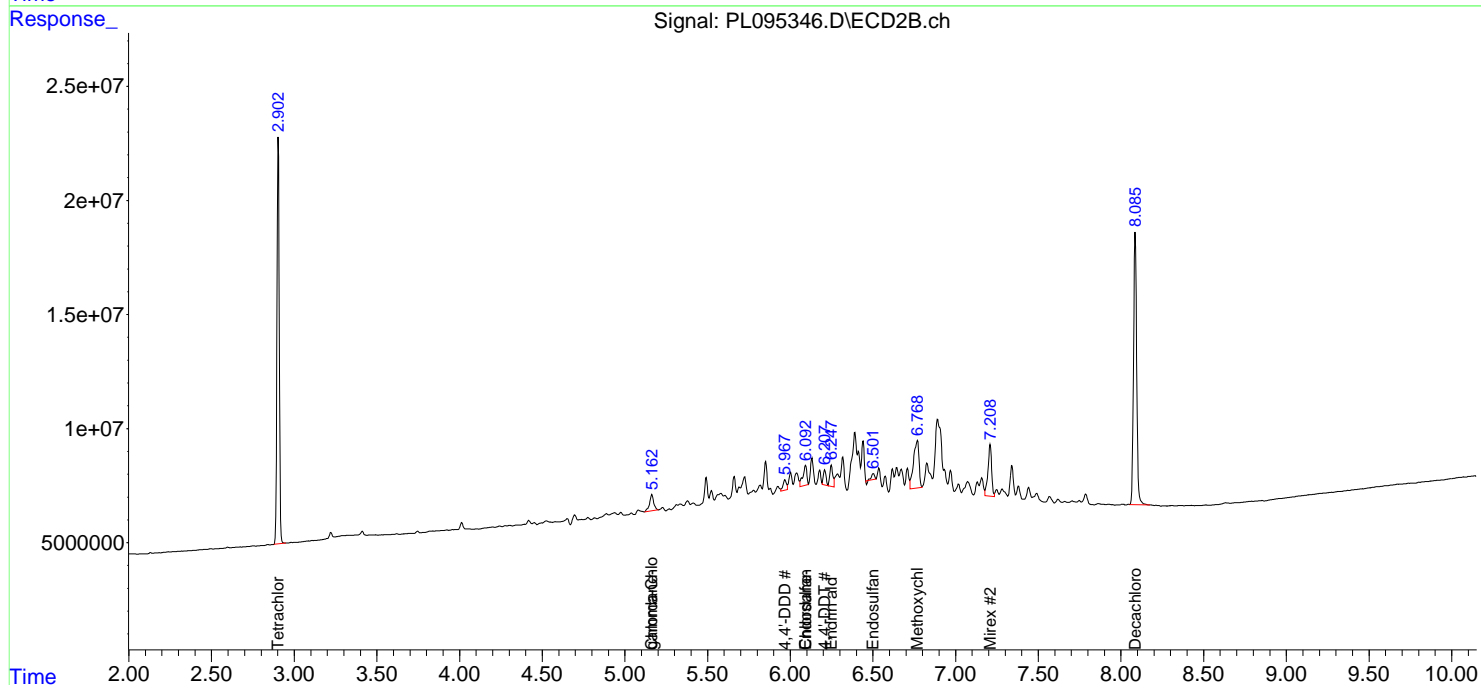
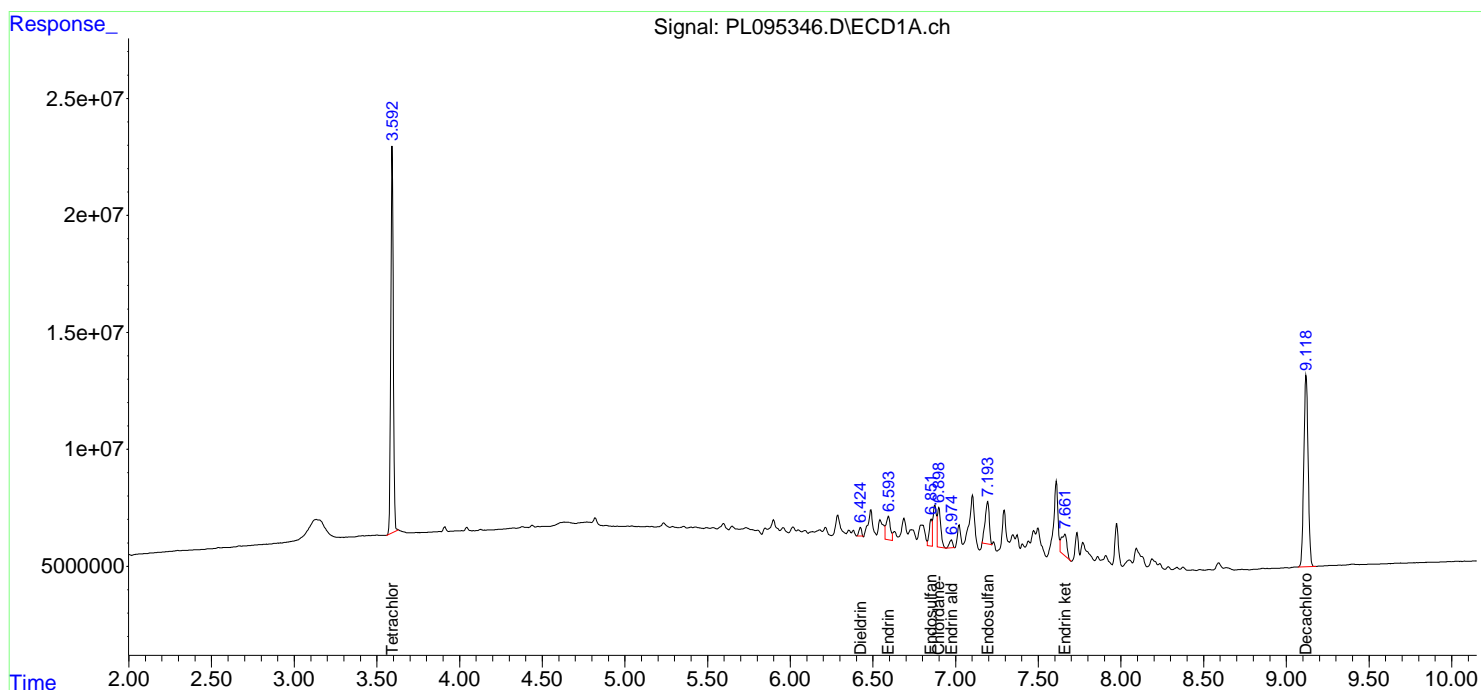
(f)=RT Delta > 1/2 Window (#)=Amounts differ by > 25% (m)=manual int.

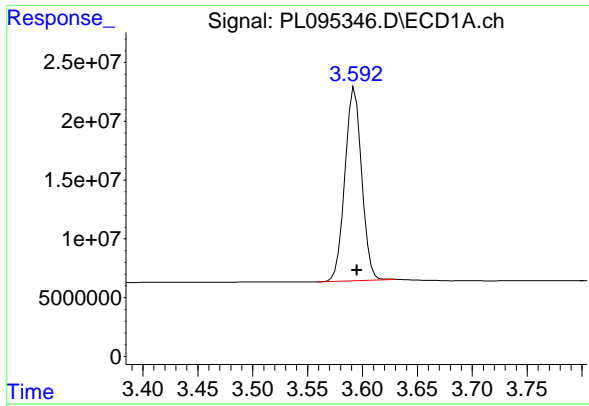
Data Path : Z:\pestpcbsrv\HPCHEM1\ECD_L\Data\PL042325\
 Data File : PL095346.D
 Signal(s) : Signal #1: ECD1A.ch Signal #2: ECD2B.ch
 Acq On : 23 Apr 2025 16:24
 Operator : AR\AJ
 Sample : PTOXICV500
 Misc :
 ALS Vial : 22 Sample Multiplier: 1

Instrument :
 ECD_L
 ClientSampleId :
 ICVPL042325TOX

Integration File signal 1: autoint1.e
 Integration File signal 2: autoint2.e
 Quant Time: Apr 23 16:36:23 2025
 Quant Method : Z:\pestpcbsrv\HPCHEM1\ECD_L\methods\PL042325.M
 Quant Title : GC Extractables
 QLast Update : Wed Apr 23 14:07:39 2025
 Response via : Initial Calibration
 Integrator: ChemStation

Volume Inj. : 1 µl
 Signal #1 Phase : ZB-MR1 Signal #2 Phase: ZB-MR2
 Signal #1 Info : 30M x 0.32mm x0.5 Signal #2 Info : 30M x 0.32mm x0.25µm

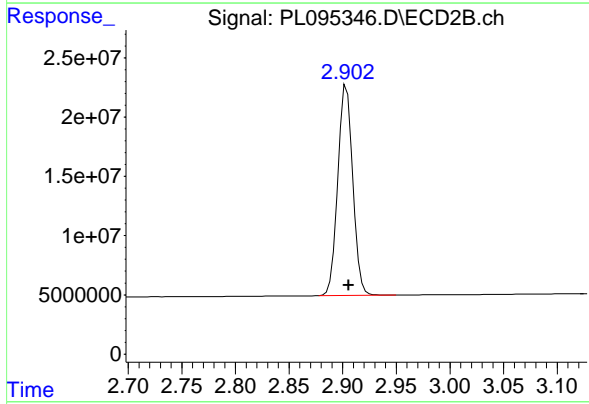




#1 Tetrachloro-m-xylene

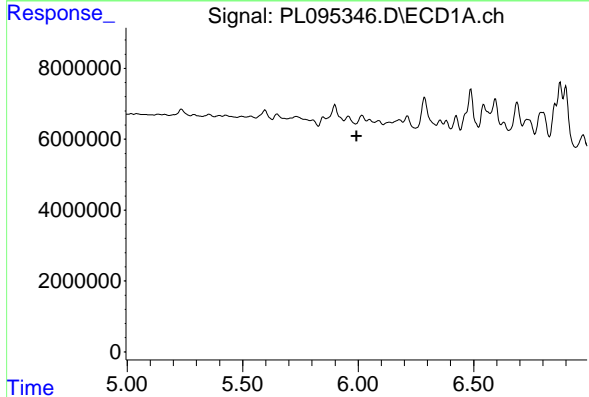
R.T.: 3.593 min
 Delta R.T.: -0.002 min
 Response: 174979230
 Conc: 53.60 ng/ml

Instrument :
 ECD_L
 ClientSampleId :
 ICVPL042325TOX



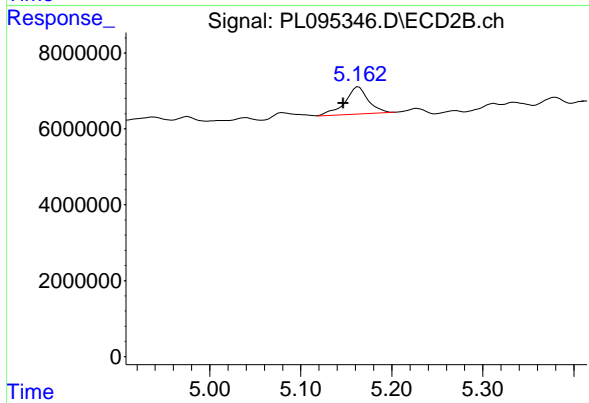
#1 Tetrachloro-m-xylene

R.T.: 2.904 min
 Delta R.T.: -0.002 min
 Response: 172297894
 Conc: 54.19 ng/ml



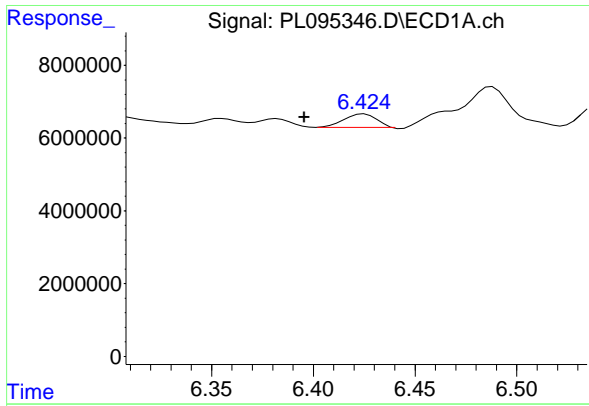
#10 gamma-Chlordane

R.T.: 0.000 min
 Exp R.T. : 5.994 min
 Response: 0
 Conc: N.D.



#10 gamma-Chlordane

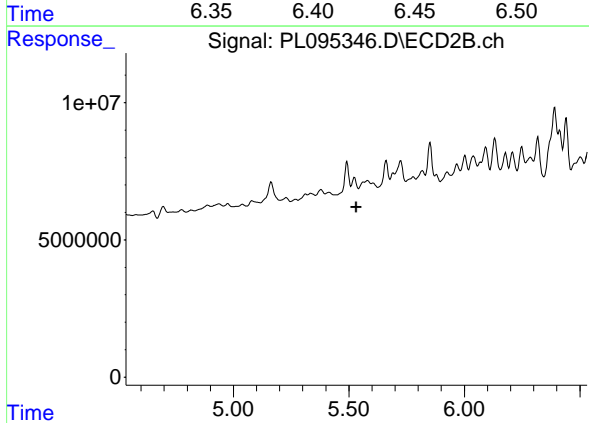
R.T.: 5.164 min
 Delta R.T.: 0.017 min
 Response: 12806257
 Conc: 3.16 ng/ml



#13 Dieldrin

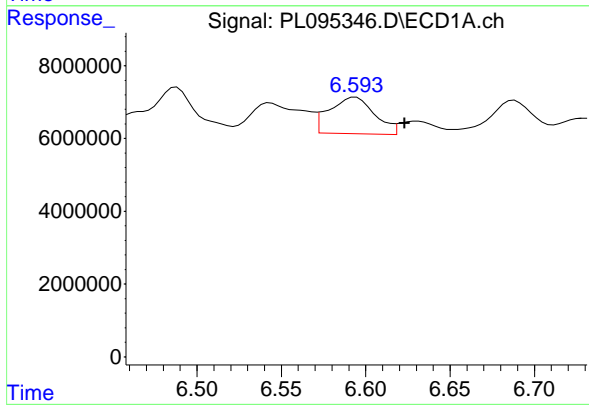
R.T.: 6.425 min
 Delta R.T.: 0.029 min
 Response: 3967075
 Conc: 1.03 ng/ml

Instrument :
 ECD_L
 ClientSampleId :
 ICVPL042325TOX



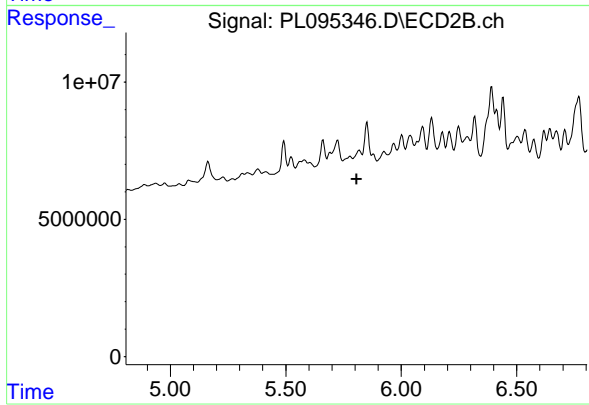
#13 Dieldrin

R.T.: 0.000 min
 Exp R.T. : 5.532 min
 Response: 0
 Conc: N.D.



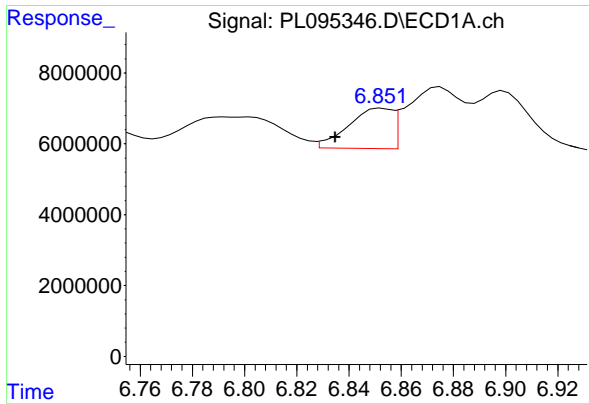
#14 Endrin

R.T.: 6.594 min
 Delta R.T.: -0.029 min
 Response: 18777861
 Conc: 5.90 ng/ml



#14 Endrin

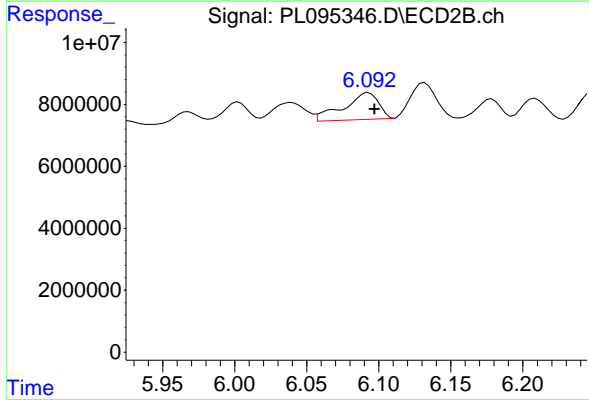
R.T.: 0.000 min
 Exp R.T. : 5.807 min
 Response: 0
 Conc: N.D.



#15 Endosulfan II

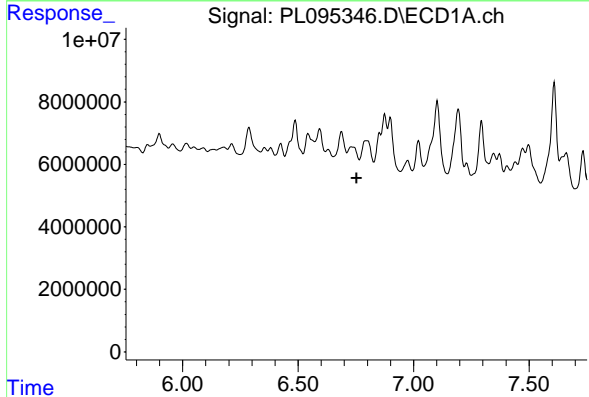
R.T.: 6.853 min
 Delta R.T.: 0.018 min
 Response: 13207389
 Conc: 4.14 ng/ml

Instrument :
 ECD_L
 ClientSampleId :
 ICVPL042325TOX



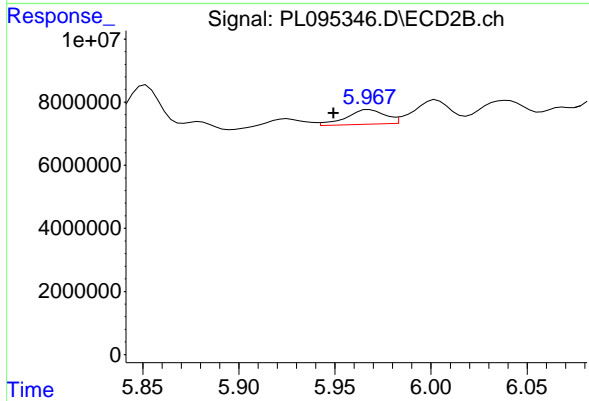
#15 Endosulfan II

R.T.: 6.093 min
 Delta R.T.: -0.004 min
 Response: 14589555
 Conc: 4.06 ng/ml



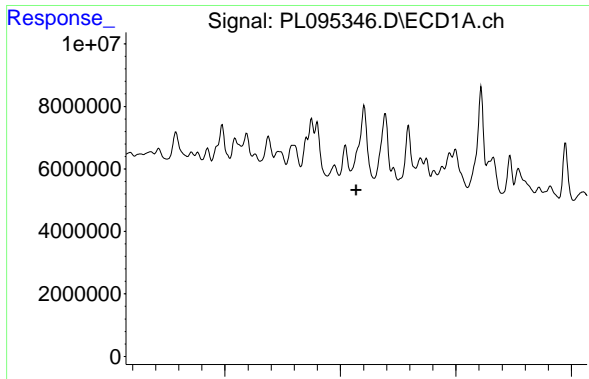
#16 4,4'-DDD

R.T.: 0.000 min
 Exp R.T. : 6.753 min
 Response: 0
 Conc: N.D.



#16 4,4'-DDD

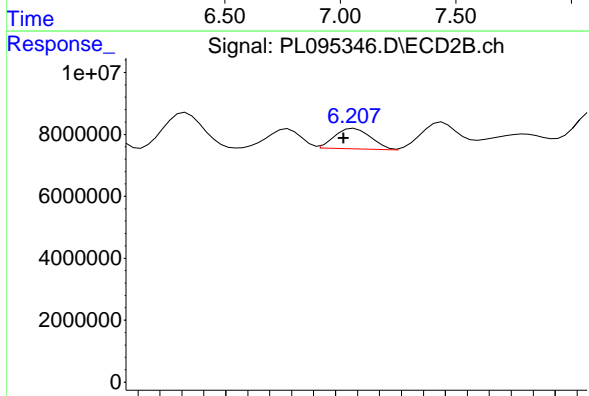
R.T.: 5.968 min
 Delta R.T.: 0.019 min
 Response: 6419026
 Conc: 1.96 ng/ml



#17 4,4' -DDT

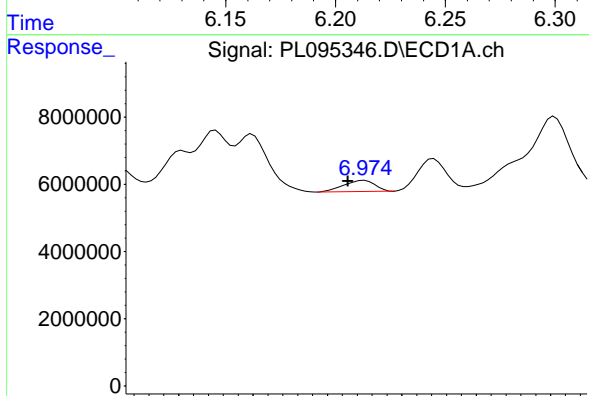
R.T.: 0.000 min
 Exp R.T.: 7.069 min
 Response: 0
 Conc: N.D.

Instrument :
 ECD_L
 ClientSampleId :
 ICVPL042325TOX



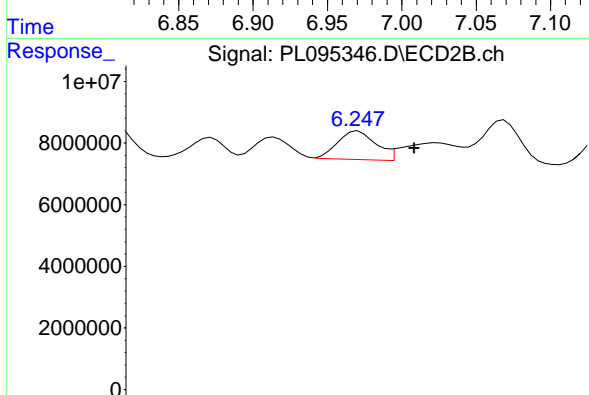
#17 4,4' -DDT

R.T.: 6.209 min
 Delta R.T.: 0.005 min
 Response: 7493461
 Conc: 2.18 ng/ml



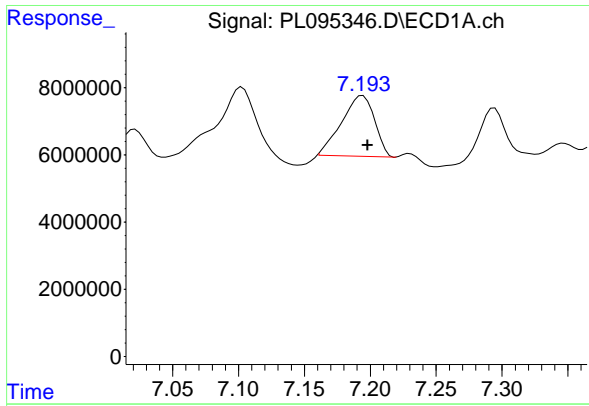
#18 Endrin aldehyde

R.T.: 6.975 min
 Delta R.T.: 0.011 min
 Response: 4872365
 Conc: 2.10 ng/ml



#18 Endrin aldehyde

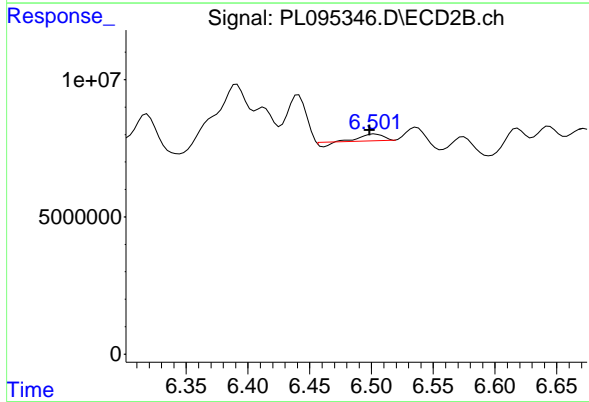
R.T.: 6.249 min
 Delta R.T.: -0.027 min
 Response: 11819263
 Conc: 4.52 ng/ml



#19 Endosulfan Sulfate

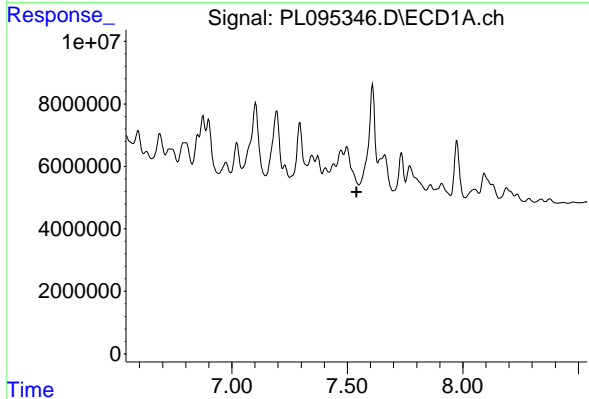
R.T.: 7.194 min
 Delta R.T.: -0.004 min
 Response: 31364239
 Conc: 11.19 ng/ml

Instrument :
 ECD_L
 ClientSampleId :
 ICVPL042325TOX



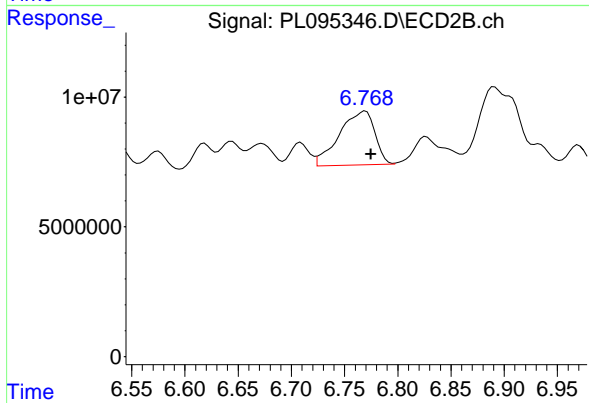
#19 Endosulfan Sulfate

R.T.: 6.503 min
 Delta R.T.: 0.004 min
 Response: 2407823
 Conc: 0.73 ng/ml



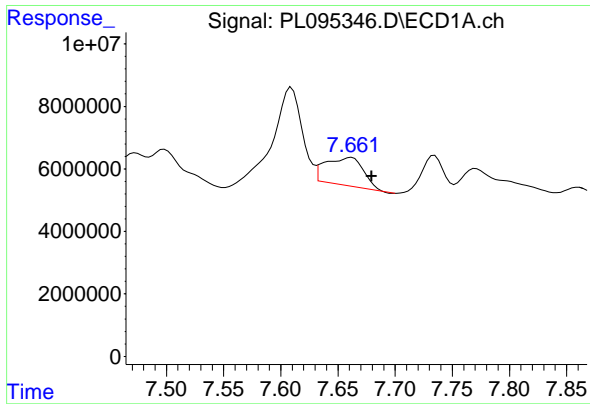
#20 Methoxychlor

R.T.: 0.000 min
 Exp R.T. : 7.540 min
 Response: 0
 Conc: N.D.



#20 Methoxychlor

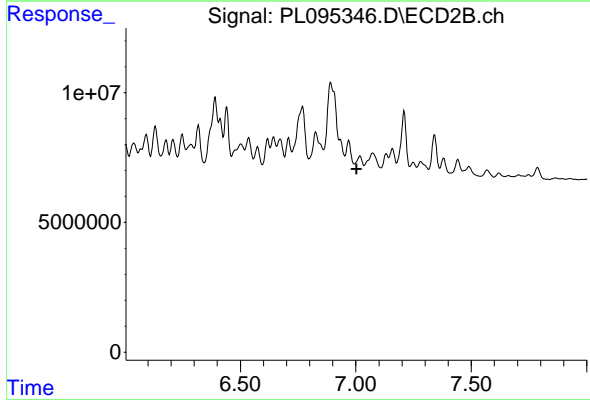
R.T.: 6.769 min
 Delta R.T.: -0.005 min
 Response: 48316325
 Conc: 25.33 ng/ml



#21 Endrin ketone

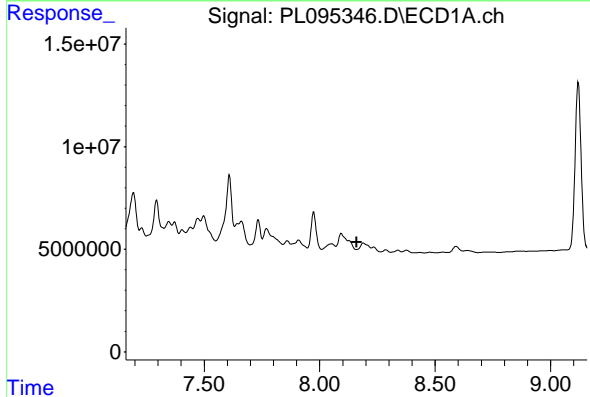
R.T.: 7.662 min
 Delta R.T.: -0.017 min
 Response: 20669859
 Conc: 7.25 ng/ml

Instrument : ECD_L
 ClientSampleId : ICVPL042325TOX



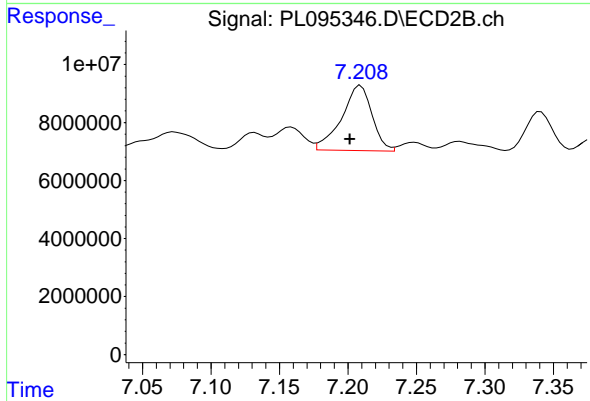
#21 Endrin ketone

R.T.: 0.000 min
 Exp R.T. : 7.004 min
 Response: 0
 Conc: N.D.



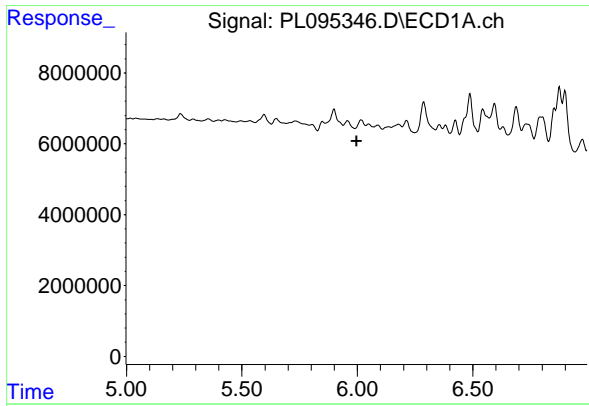
#22 Mirex

R.T.: 0.000 min
 Exp R.T. : 8.161 min
 Response: 0
 Conc: N.D.



#22 Mirex

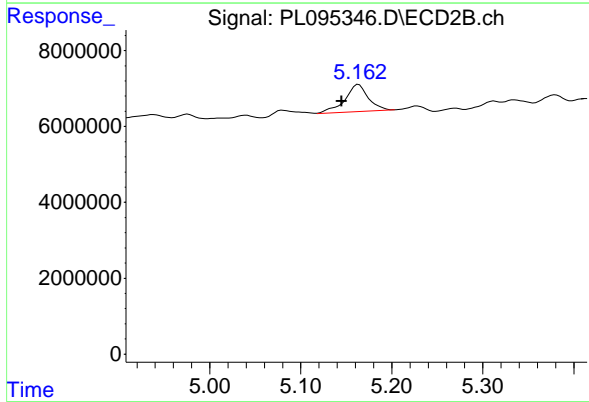
R.T.: 7.209 min
 Delta R.T.: 0.008 min
 Response: 34826728
 Conc: 12.08 ng/ml



#25 Chlordane-3

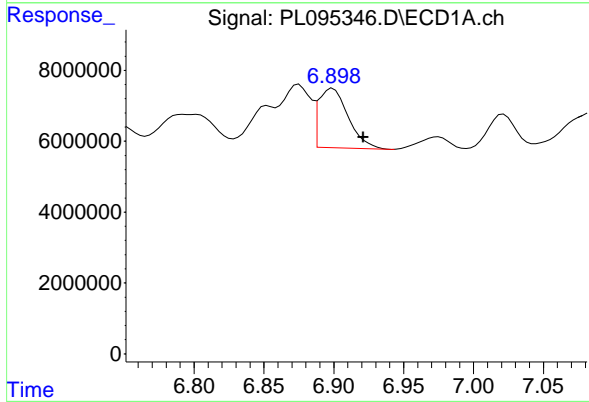
R.T.: 0.000 min
 Exp R.T.: 5.996 min
 Response: 0
 Conc: N.D.

Instrument : ECD_L
 ClientSampleId : ICVPL042325TOX



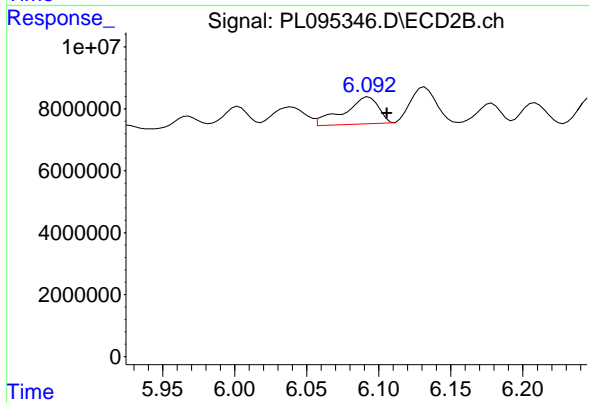
#25 Chlordane-3

R.T.: 5.164 min
 Delta R.T.: 0.019 min
 Response: 12806257
 Conc: 24.79 ng/ml



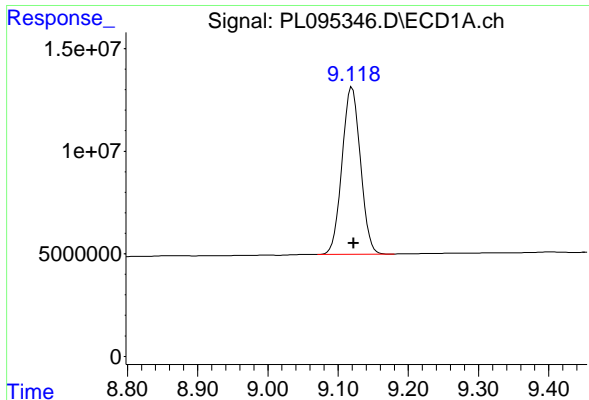
#27 Chlordane-5

R.T.: 6.899 min
 Delta R.T.: -0.022 min
 Response: 24624356
 Conc: 162.44 ng/ml



#27 Chlordane-5

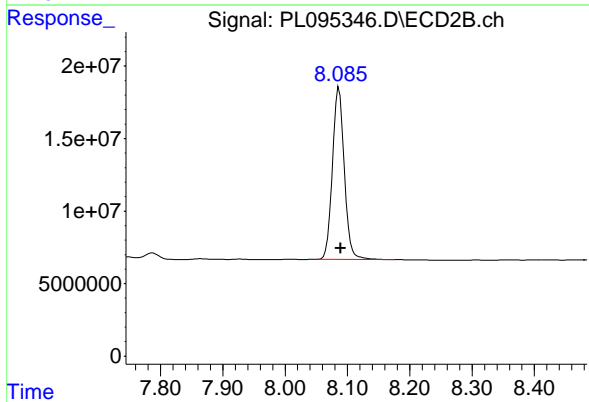
R.T.: 6.093 min
 Delta R.T.: -0.013 min
 Response: 14589555
 Conc: 78.97 ng/ml



#28 Decachlorobiphenyl

R.T.: 9.120 min
Delta R.T.: -0.002 min
Response: 148213287
Conc: 53.49 ng/ml

Instrument :
ECD_L
ClientSampleId :
ICVPL042325TOX



#28 Decachlorobiphenyl

R.T.: 8.086 min
Delta R.T.: -0.003 min
Response: 156448060
Conc: 52.87 ng/ml