

Data Path : Z:\pestpcbsrv\HPCHEM1\ECD_L\Data\PL042325\
 Data File : PL095348.D
 Signal(s) : Signal #1: ECD1A.ch Signal #2: ECD2B.ch
 Acq On : 23 Apr 2025 16:52
 Operator : AR\AJ
 Sample : PEM
 Misc :
 ALS Vial : 3 Sample Multiplier: 1

Instrument :
 ECD_L
ClientSampleId :
 PEM

Manual Integrations
APPROVED
 Reviewed By :Abdul Mirza 04/24/2025
 Supervised By :mohammad ahmed 04/26/2025

Integration File signal 1: autoint1.e
 Integration File signal 2: autoint2.e
 Quant Time: Apr 24 01:26:26 2025
 Quant Method : Z:\pestpcbsrv\HPCHEM1\ECD_L\methods\PL042325.M
 Quant Title : GC Extractables
 QLast Update : Wed Apr 23 16:23:18 2025
 Response via : Initial Calibration
 Integrator: ChemStation

Volume Inj. : 1 µl
 Signal #1 Phase : ZB-MR1 Signal #2 Phase: ZB-MR2
 Signal #1 Info : 30M x 0.32mm x0.5 Signal #2 Info : 30M x 0.32mm x0.25µm

Compound	RT#1	RT#2	Resp#1	Resp#2	ng/ml	ng/ml

System Monitoring Compounds						
1) SA Tetrachlo...	3.594	2.905	76572321	73420889	23.455	23.090
28) SA Decachlor...	9.120	8.087	69184917	70438870	24.969	23.803
Target Compounds						
2) A alpha-BHC	4.045	3.414	56500964	50059202	11.406	11.252
3) MA gamma-BHC...	4.375	3.748	55494129	50048889	11.723m	11.379
6) B beta-BHC	4.562	4.042	24004571	24396103	11.610	11.752
14) MA Endrin	6.622	5.805	188.1E6	204.6E6	59.057	56.184
16) A 4,4'-DDD	6.751	5.947	5751204	4932083	2.032	1.510 #
17) MA 4,4'-DDT	7.066	6.202	338.5E6	393.2E6	118.828	114.426
18) B Endrin al...	6.962	6.273	1437832	2570460	0.620m	0.984m#
20) A Methoxychlor	7.538	6.772	386.4E6	479.8E6	276.958	251.527
21) B Endrin ke...	7.675	6.999	3391312	4719073	1.190m	1.340m

(f)=RT Delta > 1/2 Window (#)=Amounts differ by > 25% (m)=manual int.

Data Path : Z:\pestpcbsrv\HPCHEM1\ECD_L\Data\PL042325\
 Data File : PL095348.D
 Signal(s) : Signal #1: ECD1A.ch Signal #2: ECD2B.ch
 Acq On : 23 Apr 2025 16:52
 Operator : AR\AJ
 Sample : PEM
 Misc :
 ALS Vial : 3 Sample Multiplier: 1

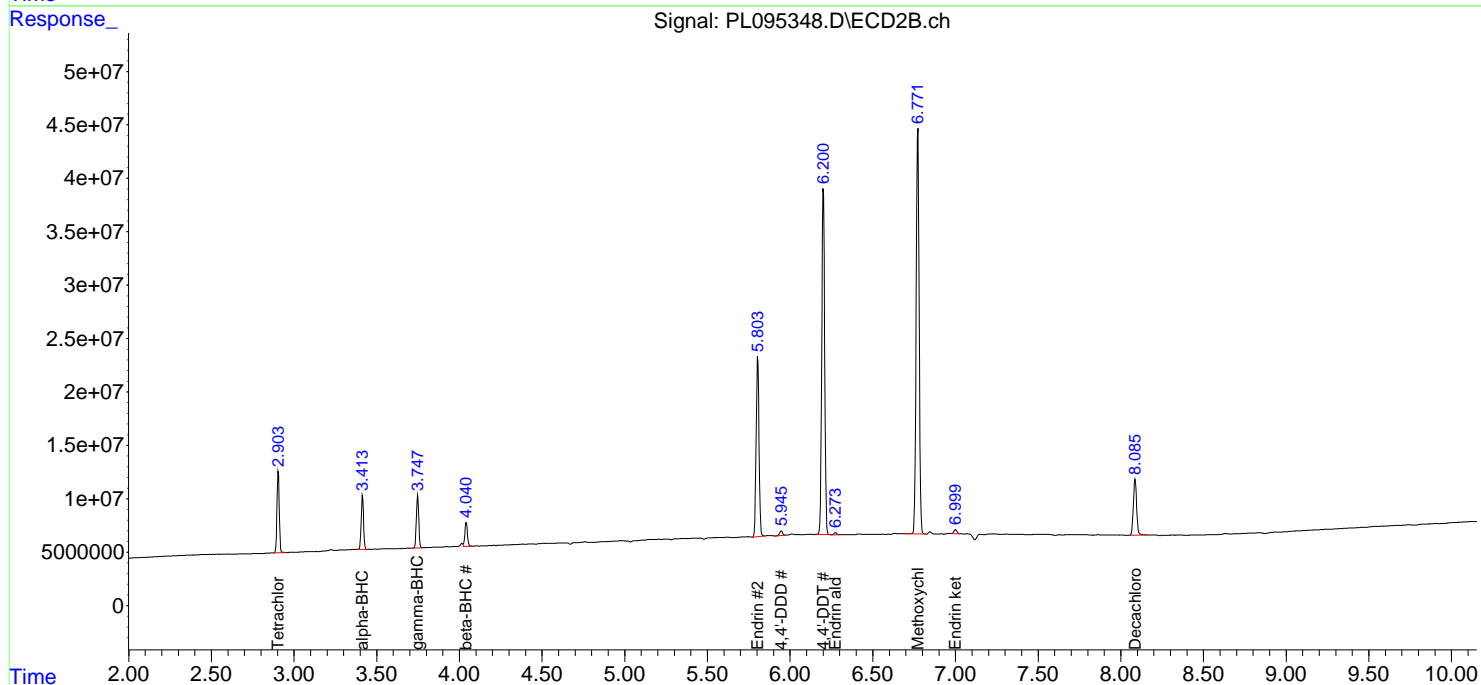
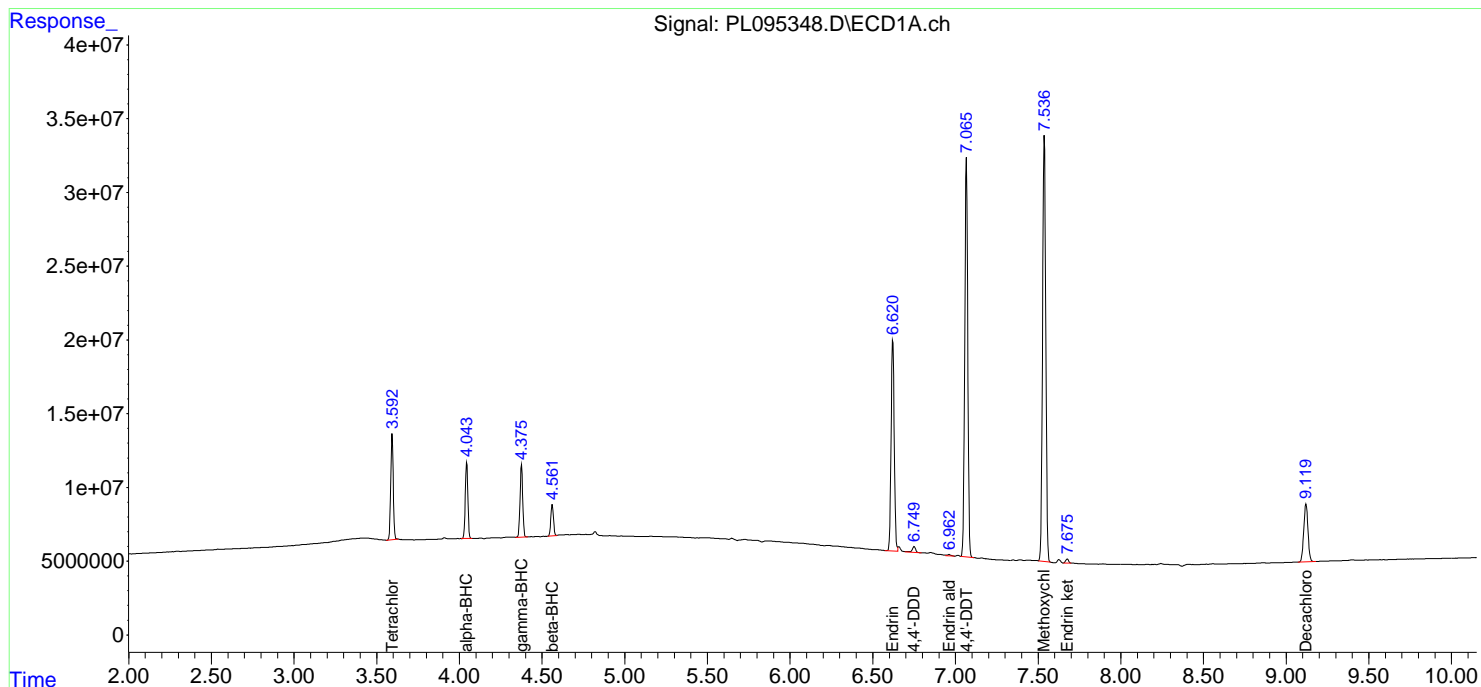
Instrument :
 ECD_L
ClientSampleId :
 PEM

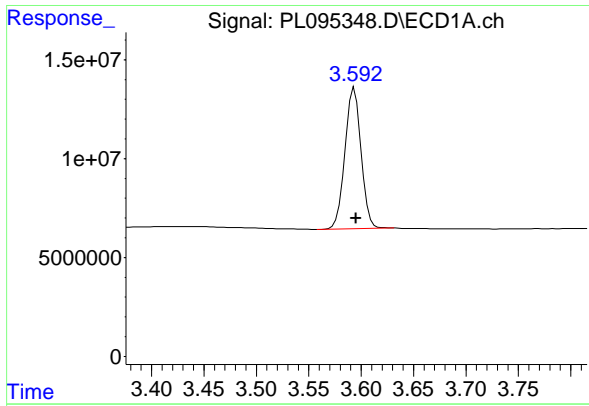
**Manual Integrations
 APPROVED**

Reviewed By :Abdul Mirza 04/24/2025
 Supervised By :mohammad ahmed 04/26/2025

Integration File signal 1: autoint1.e
 Integration File signal 2: autoint2.e
 Quant Time: Apr 24 01:26:26 2025
 Quant Method : Z:\pestpcbsrv\HPCHEM1\ECD_L\methods\PL042325.M
 Quant Title : GC Extractables
 QLast Update : Wed Apr 23 16:23:18 2025
 Response via : Initial Calibration
 Integrator: ChemStation

Volume Inj. : 1 µl
 Signal #1 Phase : ZB-MR1 Signal #2 Phase: ZB-MR2
 Signal #1 Info : 30M x 0.32mm x0.5 Signal #2 Info : 30M x 0.32mm x0.25µm





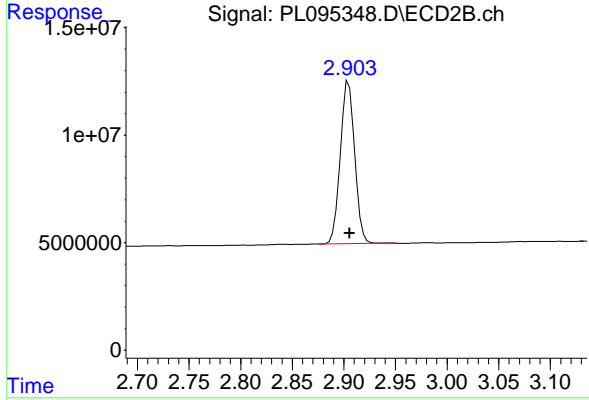
#1 Tetrachloro-m-xylene

R.T.: 3.594 min
 Delta R.T.: -0.001 min
 Response: 76572321
 Conc: 23.45 ng/ml

Instrument :
 ECD_L
 ClientSampleId :
 PEM

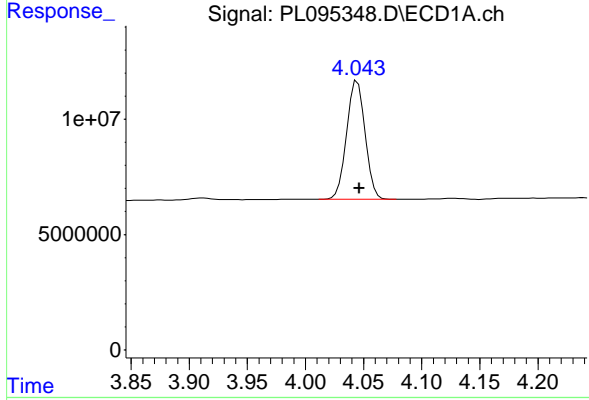
Manual Integrations
 APPROVED

Reviewed By :Abdul Mirza 04/24/2025
 Supervised By :mohammad ahmed 04/26/2025



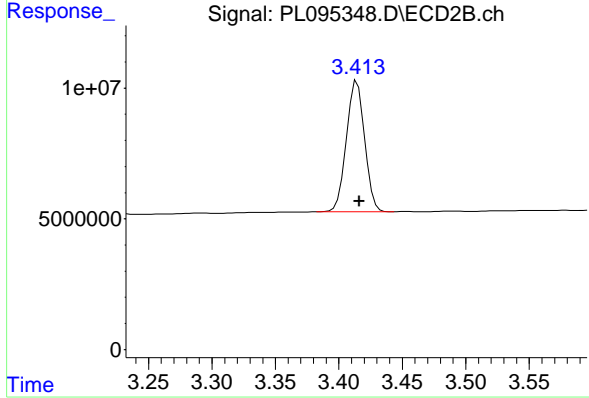
#1 Tetrachloro-m-xylene

R.T.: 2.905 min
 Delta R.T.: 0.000 min
 Response: 73420889
 Conc: 23.09 ng/ml



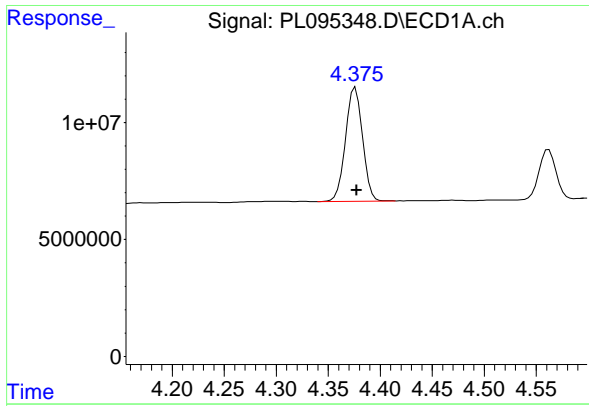
#2 alpha-BHC

R.T.: 4.045 min
 Delta R.T.: -0.002 min
 Response: 56500964
 Conc: 11.41 ng/ml



#2 alpha-BHC

R.T.: 3.414 min
 Delta R.T.: -0.002 min
 Response: 50059202
 Conc: 11.25 ng/ml



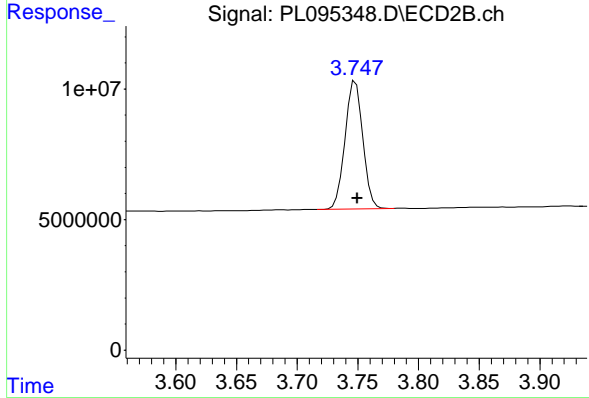
#3 gamma-BHC (Lindane)

R.T.: 4.375 min
 Delta R.T.: -0.003 min
 Response: 55494129
 Conc: 11.72 ng/ml

Instrument :
 ECD_L
 ClientSampleId :
 PEM

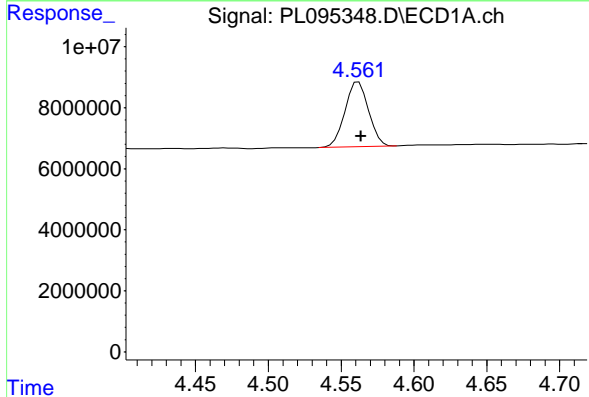
Manual Integrations
 APPROVED

Reviewed By :Abdul Mirza 04/24/2025
 Supervised By :mohammad ahmed 04/26/2025



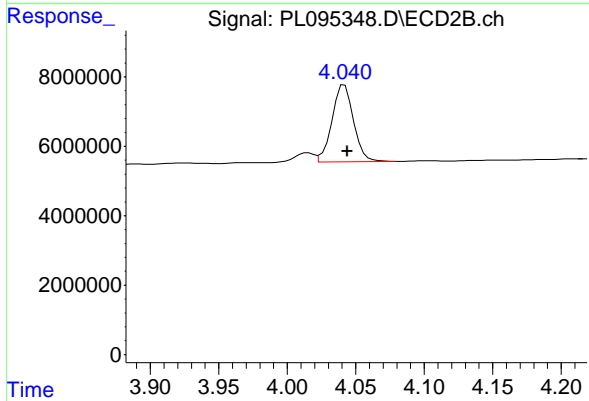
#3 gamma-BHC (Lindane)

R.T.: 3.748 min
 Delta R.T.: -0.002 min
 Response: 50048889
 Conc: 11.38 ng/ml



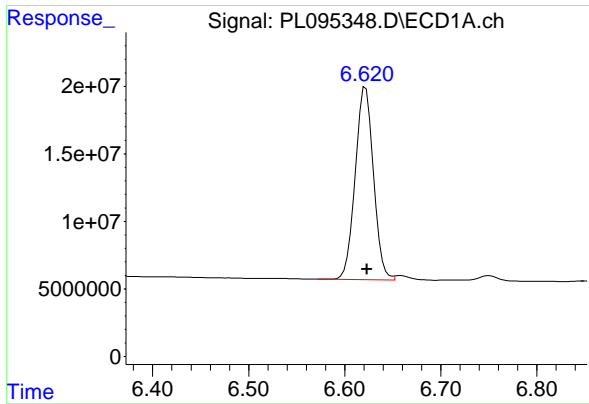
#6 beta-BHC

R.T.: 4.562 min
 Delta R.T.: -0.002 min
 Response: 24004571
 Conc: 11.61 ng/ml



#6 beta-BHC

R.T.: 4.042 min
 Delta R.T.: -0.002 min
 Response: 24396103
 Conc: 11.75 ng/ml



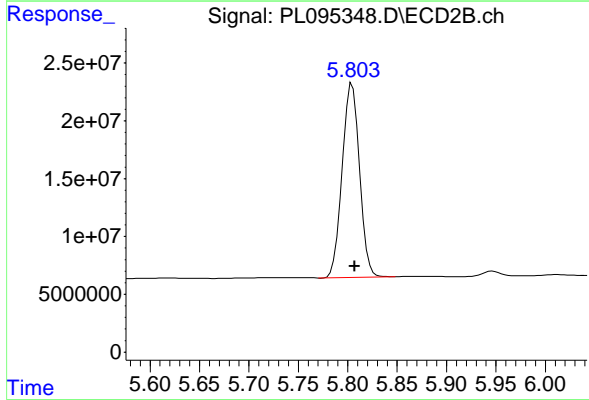
#14 Endrin

R.T.: 6.622 min
 Delta R.T.: -0.002 min
 Response: 188081704
 Conc: 59.06 ng/ml

Instrument :
 ECD_L
 ClientSampleId :
 PEM

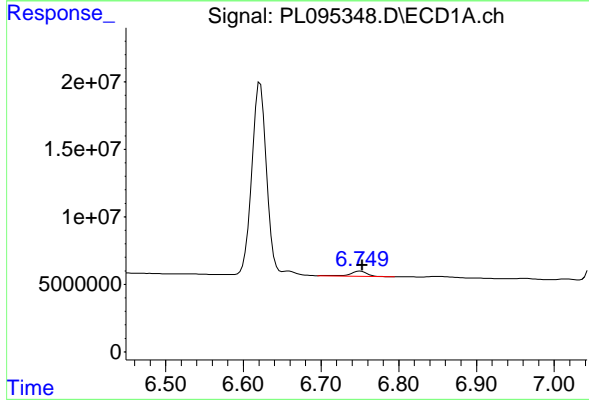
Manual Integrations
 APPROVED

Reviewed By :Abdul Mirza 04/24/2025
 Supervised By :mohammad ahmed 04/26/2025



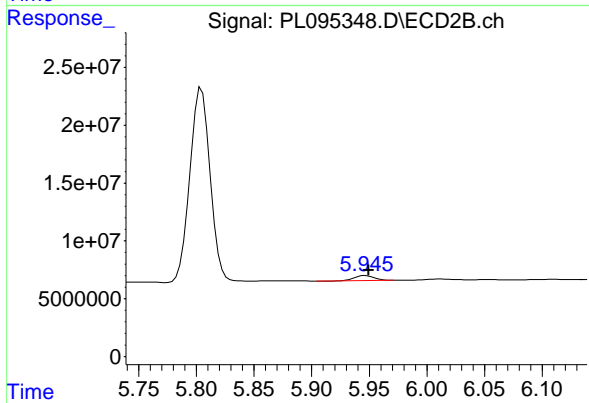
#14 Endrin

R.T.: 5.805 min
 Delta R.T.: -0.002 min
 Response: 204551244
 Conc: 56.18 ng/ml



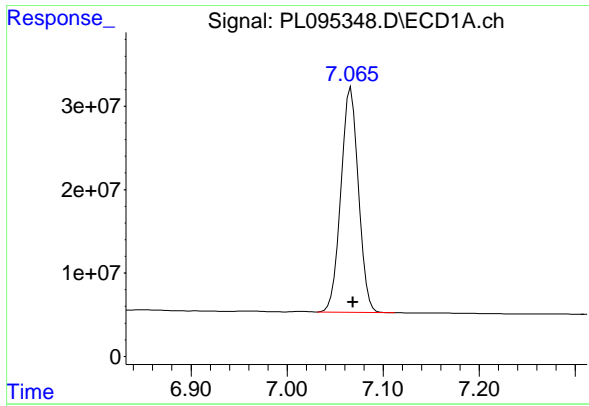
#16 4,4'-DDD

R.T.: 6.751 min
 Delta R.T.: -0.002 min
 Response: 5751204
 Conc: 2.03 ng/ml



#16 4,4'-DDD

R.T.: 5.947 min
 Delta R.T.: -0.003 min
 Response: 4932083
 Conc: 1.51 ng/ml



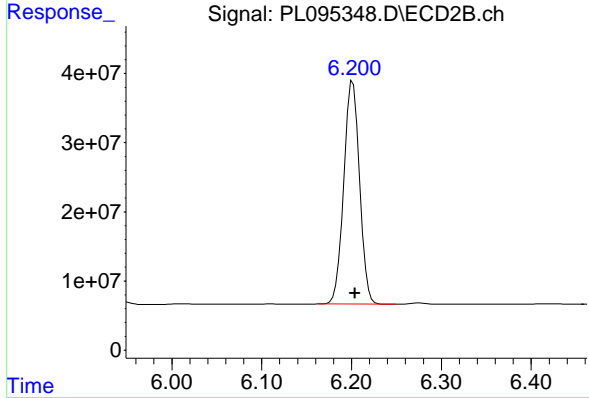
#17 4,4' -DDT

R.T.: 7.066 min
 Delta R.T.: -0.002 min
 Response: 338490899
 Conc: 118.83 ng/ml

Instrument :
 ECD_L
 ClientSampleId :
 PEM

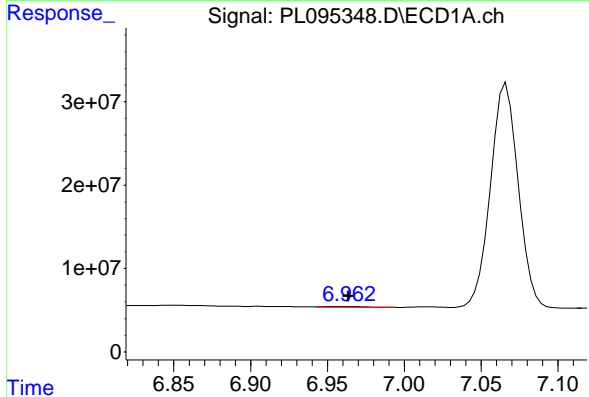
Manual Integrations
 APPROVED

Reviewed By :Abdul Mirza 04/24/2025
 Supervised By :mohammad ahmed 04/26/2025



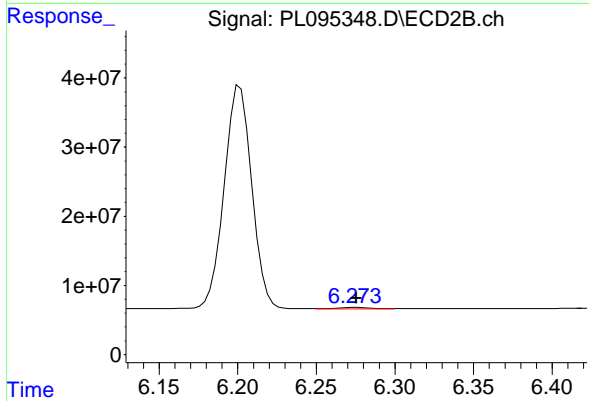
#17 4,4' -DDT

R.T.: 6.202 min
 Delta R.T.: -0.002 min
 Response: 393187337
 Conc: 114.43 ng/ml



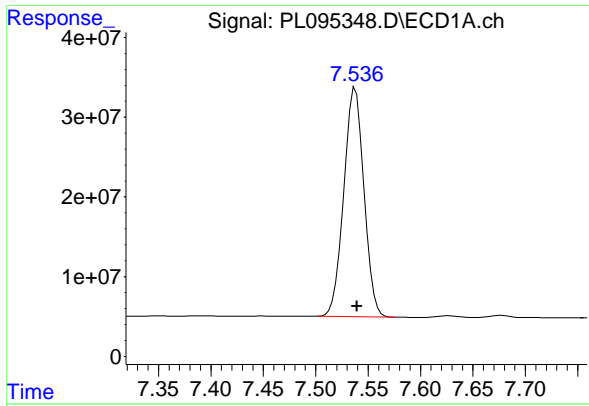
#18 Endrin aldehyde

R.T.: 6.962 min
 Delta R.T.: -0.002 min
 Response: 1437832
 Conc: 0.62 ng/ml m



#18 Endrin aldehyde

R.T.: 6.273 min
 Delta R.T.: -0.003 min
 Response: 2570460
 Conc: 0.98 ng/ml m



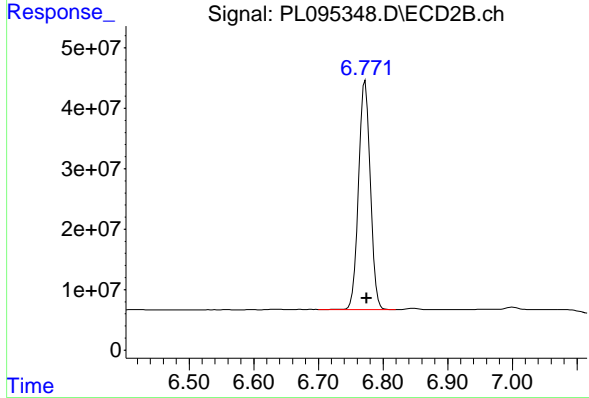
#20 Methoxychlor

R.T.: 7.538 min
 Delta R.T.: -0.002 min
 Response: 386392937
 Conc: 276.96 ng/ml

Instrument :
 ECD_L
 ClientSampleId :
 PEM

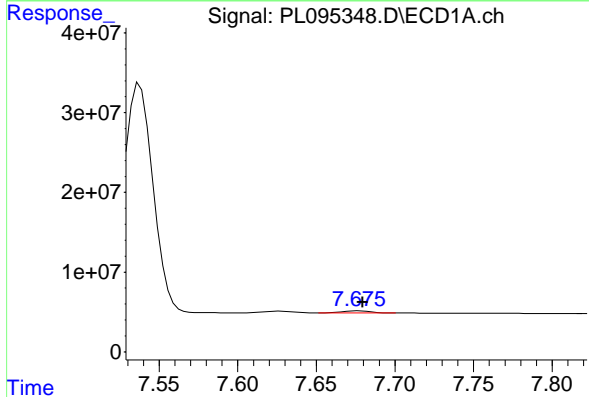
Manual Integrations
 APPROVED

Reviewed By :Abdul Mirza 04/24/2025
 Supervised By :mohammad ahmed 04/26/2025



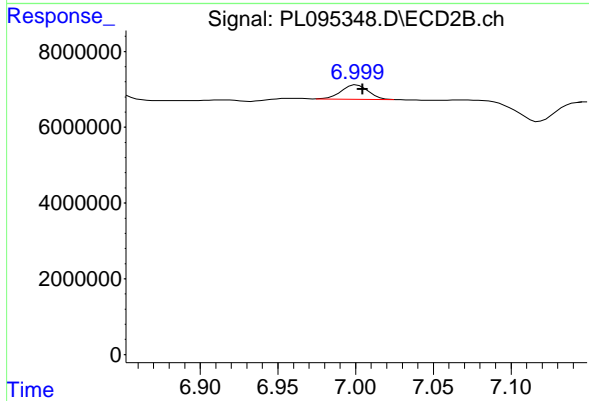
#20 Methoxychlor

R.T.: 6.772 min
 Delta R.T.: -0.002 min
 Response: 479768730
 Conc: 251.53 ng/ml



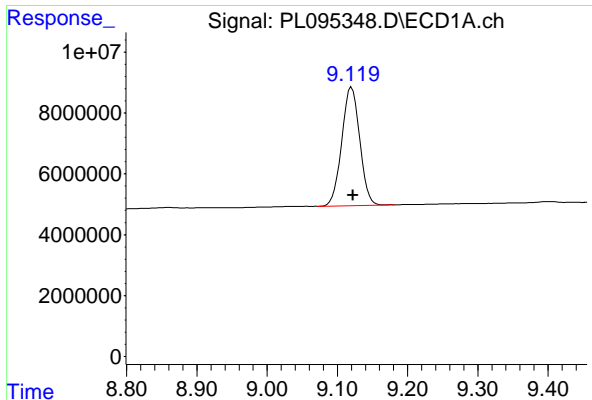
#21 Endrin ketone

R.T.: 7.675 min
 Delta R.T.: -0.004 min
 Response: 3391312
 Conc: 1.19 ng/ml m



#21 Endrin ketone

R.T.: 6.999 min
 Delta R.T.: -0.005 min
 Response: 4719073
 Conc: 1.34 ng/ml m



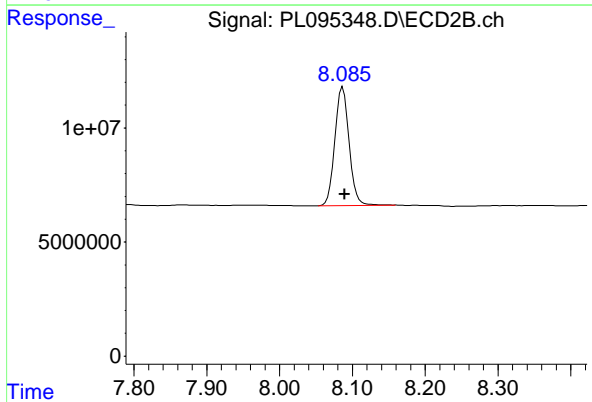
#28 Decachlorobiphenyl

R.T.: 9.120 min
 Delta R.T.: -0.002 min
 Response: 69184917
 Conc: 24.97 ng/ml

Instrument :
 ECD_L
 ClientSampleId :
 PEM

Manual Integrations
 APPROVED

Reviewed By :Abdul Mirza 04/24/2025
 Supervised By :mohammad ahmed 04/26/2025



#28 Decachlorobiphenyl

R.T.: 8.087 min
 Delta R.T.: -0.003 min
 Response: 70438870
 Conc: 23.80 ng/ml