

Data Path : Z:\pestpcbsrv\HPCHEM1\ECD_L\Data\PL043025\
 Data File : PL095439.D
 Signal(s) : Signal #1: ECD1A.ch Signal #2: ECD2B.ch
 Acq On : 28 Apr 2025 15:47
 Operator : AR\AJ
 Sample : PEM
 Misc :
 ALS Vial : 3 Sample Multiplier: 1

Instrument :
 ECD_L
ClientSampleId :
 PEM

Manual Integrations
APPROVED
 Reviewed By :Abdul Mirza 04/29/2025
 Supervised By :mohammad ahmed 05/02/2025

Integration File signal 1: autoint1.e
 Integration File signal 2: autoint2.e
 Quant Time: Apr 29 01:34:47 2025
 Quant Method : Z:\pestpcbsrv\HPCHEM1\ECD_L\methods\PL042325.M
 Quant Title : GC Extractables
 QLast Update : Wed Apr 23 16:23:18 2025
 Response via : Initial Calibration
 Integrator: ChemStation

Volume Inj. : 1 µl
 Signal #1 Phase : ZB-MR1 Signal #2 Phase: ZB-MR2
 Signal #1 Info : 30M x 0.32mm x0.5 Signal #2 Info : 30M x 0.32mm x0.25µm

Compound	RT#1	RT#2	Resp#1	Resp#2	ng/ml	ng/ml

System Monitoring Compounds						
1) SA Tetrachlo...	3.593	2.904	73328793	68568704	22.461	21.564
28) SA Decachlor...	9.117	8.083	70253388	72725496	25.355	24.576
Target Compounds						
2) A alpha-BHC	4.044	3.413	54493818	47576174	11.001	10.694
3) MA gamma-BHC...	4.373	3.747	53354812	47186291	11.271m	10.728
6) B beta-BHC	4.561	4.040	23140770	23104520	11.193	11.130
14) MA Endrin	6.619	5.801	188.6E6	188.5E6	59.227	51.778
16) A 4,4'-DDD	6.747	5.944	12797611	11122240	4.521m	3.405
17) MA 4,4'-DDT	7.065	6.198	334.4E6	368.6E6	117.390	107.281
18) B Endrin al...	6.959	6.270	2168254	2888600	0.934m	1.105m
20) A Methoxychlor	7.536	6.769	376.0E6	440.4E6	269.500	230.892
21) B Endrin ke...	7.674	6.998	7348526	8581872	2.578	2.437

(f)=RT Delta > 1/2 Window (#)=Amounts differ by > 25% (m)=manual int.

Data Path : Z:\pestpcbsrv\HPCHEM1\ECD_L\Data\PL043025\
 Data File : PL095439.D
 Signal(s) : Signal #1: ECD1A.ch Signal #2: ECD2B.ch
 Acq On : 28 Apr 2025 15:47
 Operator : AR\AJ
 Sample : PEM
 Misc :
 ALS Vial : 3 Sample Multiplier: 1

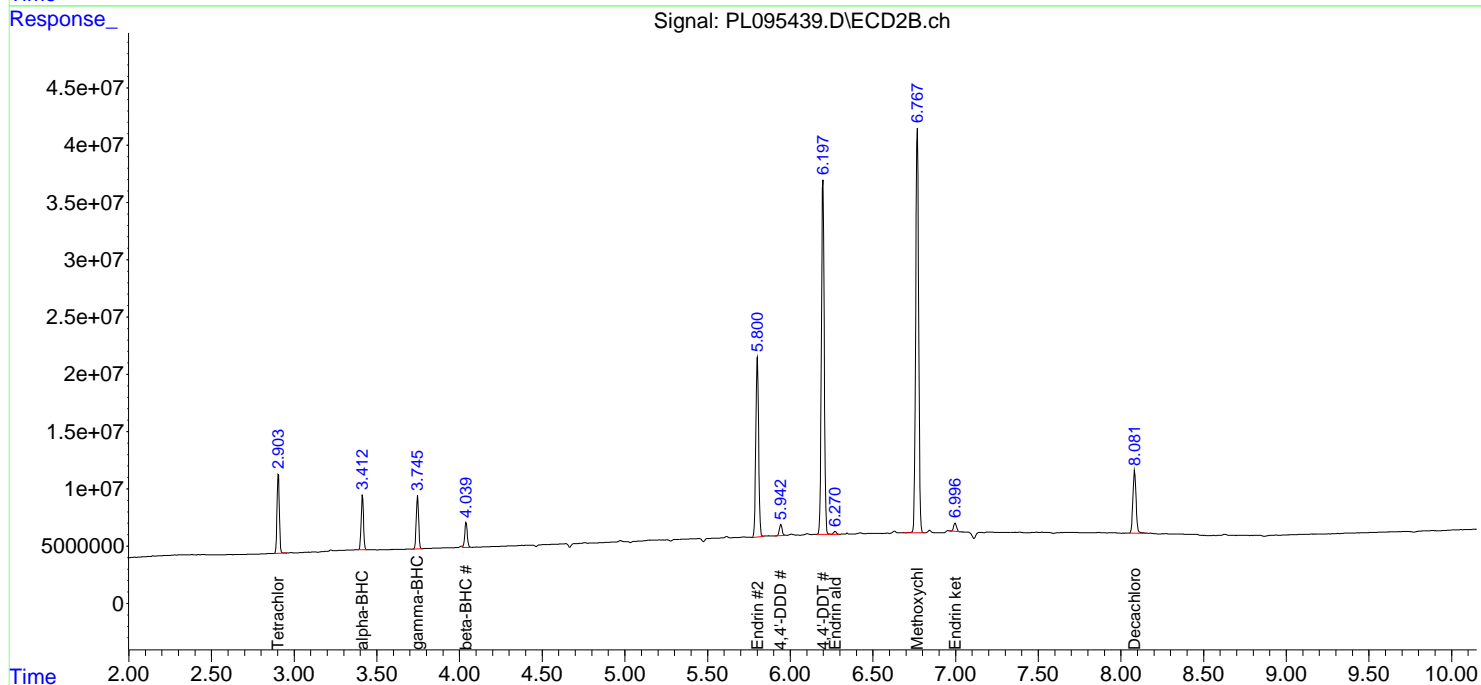
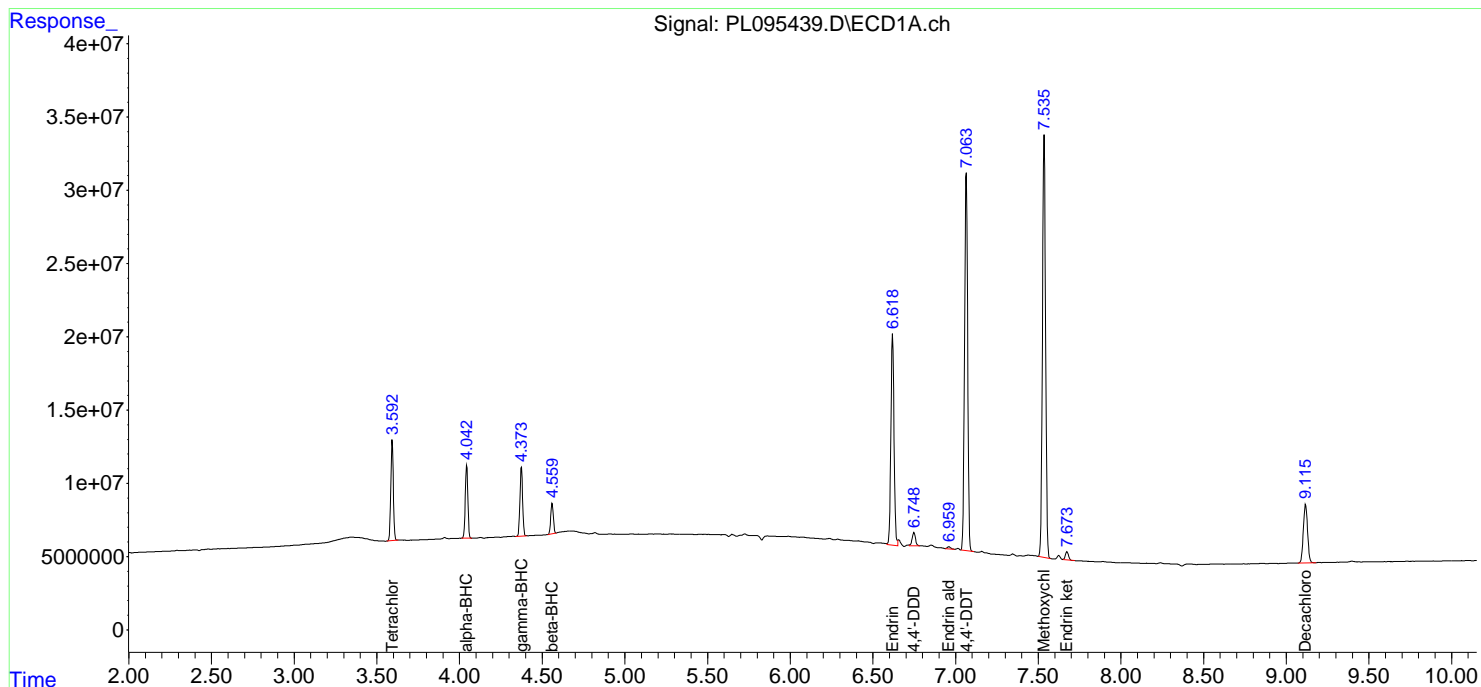
Instrument :
 ECD_L
ClientSampleId :
 PEM

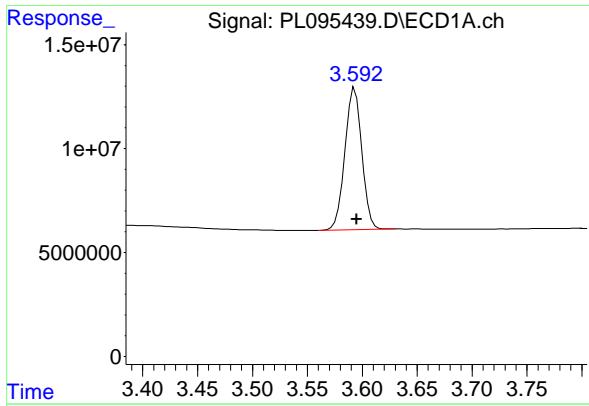
Manual Integrations
APPROVED

Reviewed By :Abdul Mirza 04/29/2025
 Supervised By :mohammad ahmed 05/02/2025

Integration File signal 1: autoint1.e
 Integration File signal 2: autoint2.e
 Quant Time: Apr 29 01:34:47 2025
 Quant Method : Z:\pestpcbsrv\HPCHEM1\ECD_L\methods\PL042325.M
 Quant Title : GC Extractables
 QLast Update : Wed Apr 23 16:23:18 2025
 Response via : Initial Calibration
 Integrator: ChemStation

Volume Inj. : 1 µl
 Signal #1 Phase : ZB-MR1 Signal #2 Phase: ZB-MR2
 Signal #1 Info : 30M x 0.32mm x0.5 Signal #2 Info : 30M x 0.32mm x0.25µm





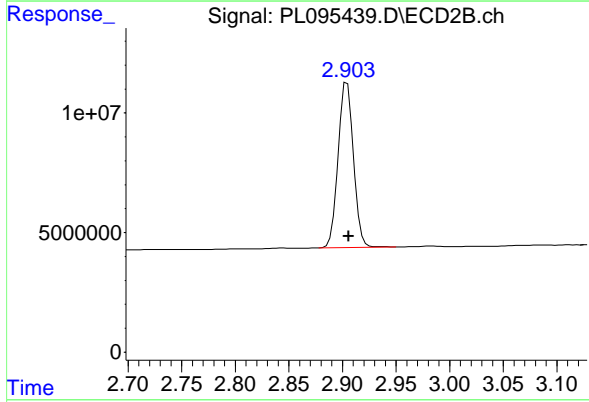
#1 Tetrachloro-m-xylene

R.T.: 3.593 min
 Delta R.T.: -0.002 min
 Response: 73328793
 Conc: 22.46 ng/ml

Instrument :
 ECD_L
 ClientSampleId :
 PEM

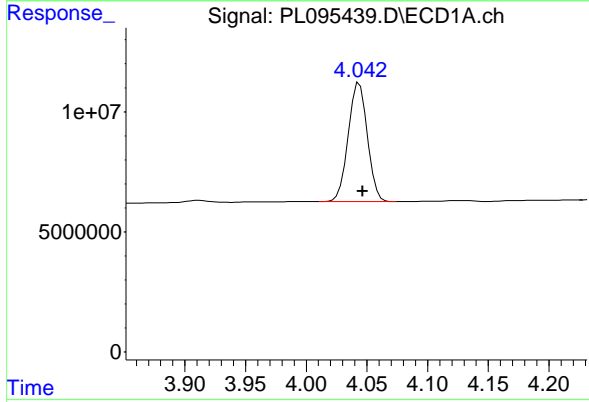
Manual Integrations
 APPROVED

Reviewed By :Abdul Mirza 04/29/2025
 Supervised By :mohammad ahmed 05/02/2025



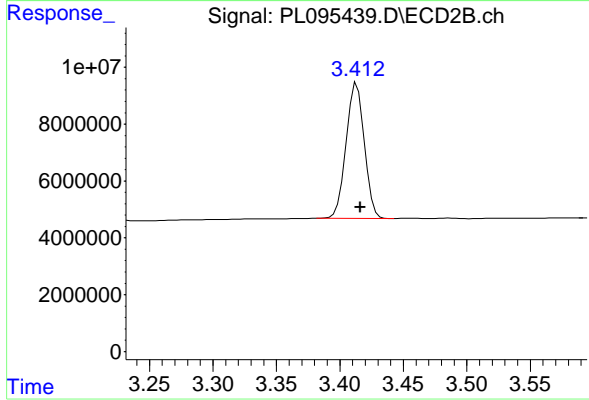
#1 Tetrachloro-m-xylene

R.T.: 2.904 min
 Delta R.T.: -0.001 min
 Response: 68568704
 Conc: 21.56 ng/ml



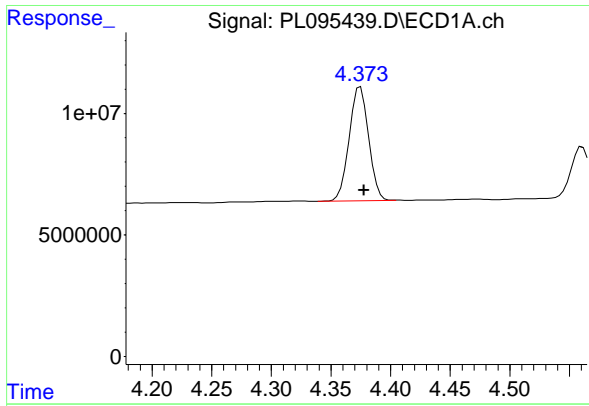
#2 alpha-BHC

R.T.: 4.044 min
 Delta R.T.: -0.002 min
 Response: 54493818
 Conc: 11.00 ng/ml



#2 alpha-BHC

R.T.: 3.413 min
 Delta R.T.: -0.003 min
 Response: 47576174
 Conc: 10.69 ng/ml



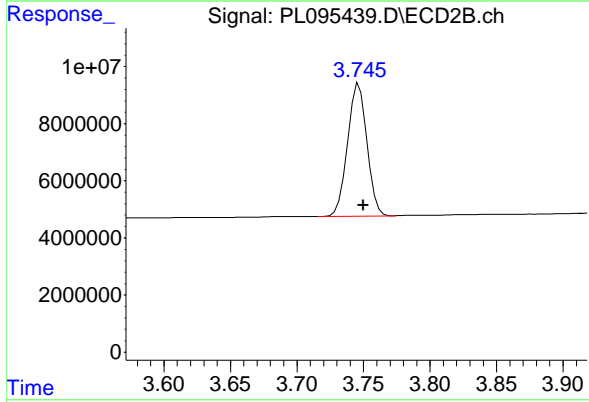
#3 gamma-BHC (Lindane)

R.T.: 4.373 min
 Delta R.T.: -0.004 min
 Response: 53354812
 Conc: 11.27 ng/ml

Instrument :
 ECD_L
 ClientSampleId :
 PEM

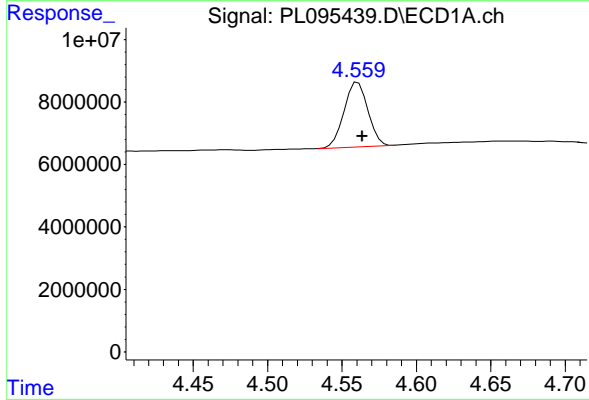
Manual Integrations
 APPROVED

Reviewed By :Abdul Mirza 04/29/2025
 Supervised By :mohammad ahmed 05/02/2025



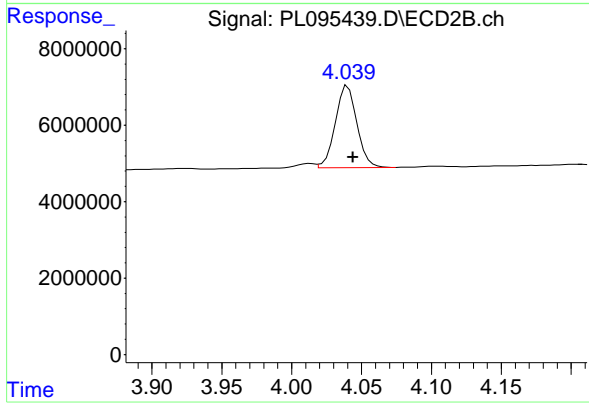
#3 gamma-BHC (Lindane)

R.T.: 3.747 min
 Delta R.T.: -0.003 min
 Response: 47186291
 Conc: 10.73 ng/ml



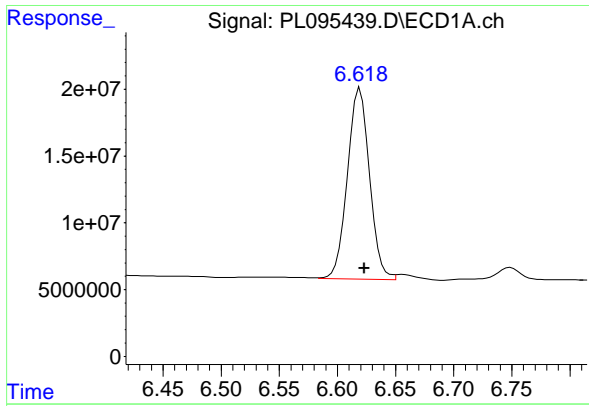
#6 beta-BHC

R.T.: 4.561 min
 Delta R.T.: -0.003 min
 Response: 23140770
 Conc: 11.19 ng/ml



#6 beta-BHC

R.T.: 4.040 min
 Delta R.T.: -0.004 min
 Response: 23104520
 Conc: 11.13 ng/ml



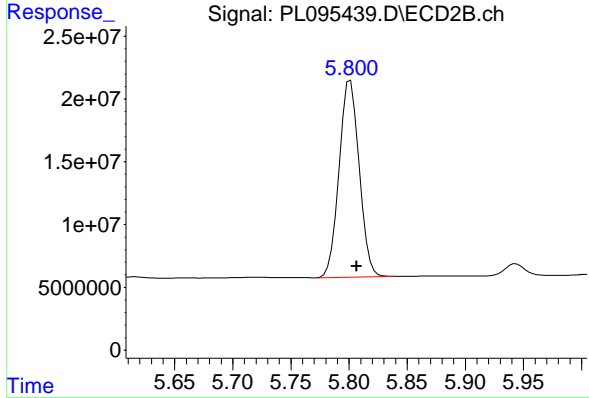
#14 Endrin

R.T.: 6.619 min
 Delta R.T.: -0.004 min
 Response: 188623186
 Conc: 59.23 ng/ml

Instrument :
 ECD_L
 ClientSampleId :
 PEM

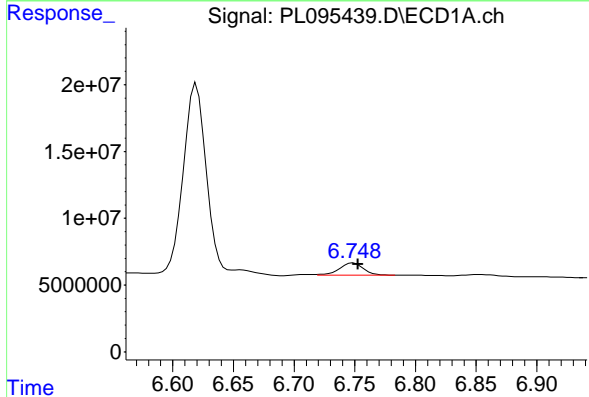
Manual Integrations
 APPROVED

Reviewed By :Abdul Mirza 04/29/2025
 Supervised By :mohammad ahmed 05/02/2025



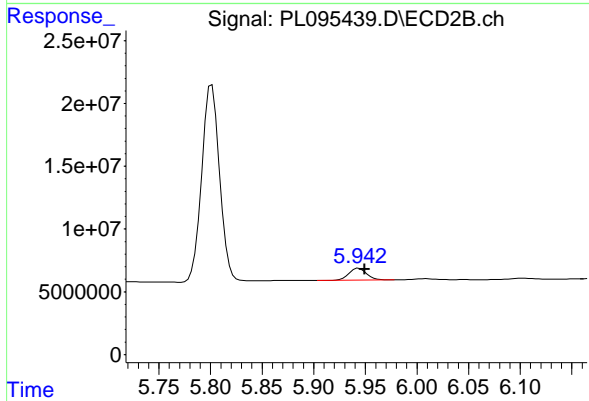
#14 Endrin

R.T.: 5.801 min
 Delta R.T.: -0.005 min
 Response: 188510661
 Conc: 51.78 ng/ml



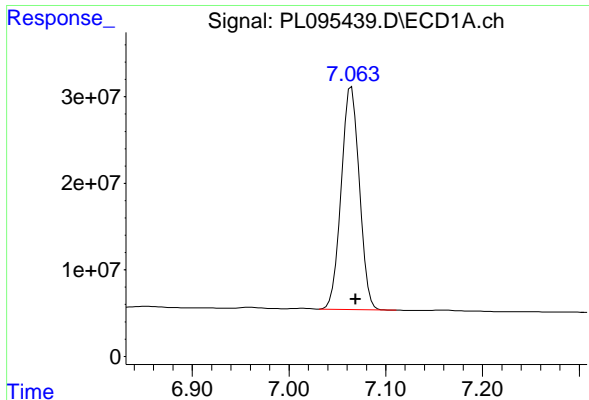
#16 4,4'-DDD

R.T.: 6.747 min
 Delta R.T.: -0.005 min
 Response: 12797611
 Conc: 4.52 ng/ml m



#16 4,4'-DDD

R.T.: 5.944 min
 Delta R.T.: -0.006 min
 Response: 11122240
 Conc: 3.40 ng/ml



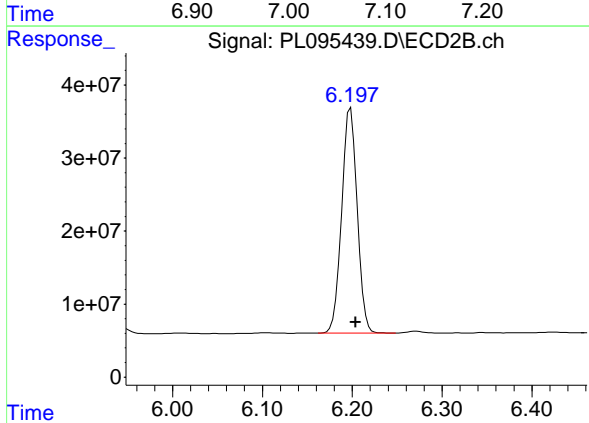
#17 4,4' -DDT

R.T.: 7.065 min
 Delta R.T.: -0.004 min
 Response: 334394455
 Conc: 117.39 ng/ml

Instrument :
 ECD_L
 ClientSampleId :
 PEM

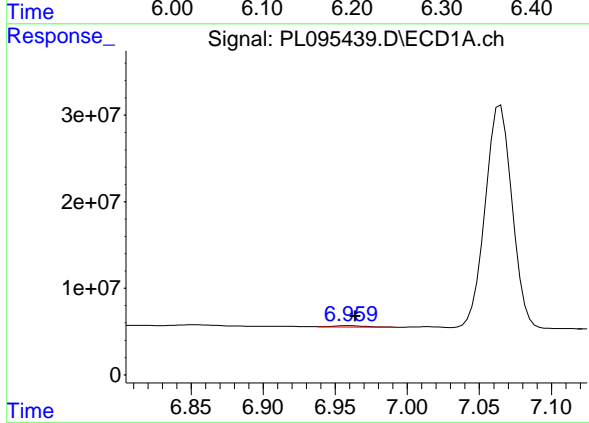
Manual Integrations
 APPROVED

Reviewed By :Abdul Mirza 04/29/2025
 Supervised By :mohammad ahmed 05/02/2025



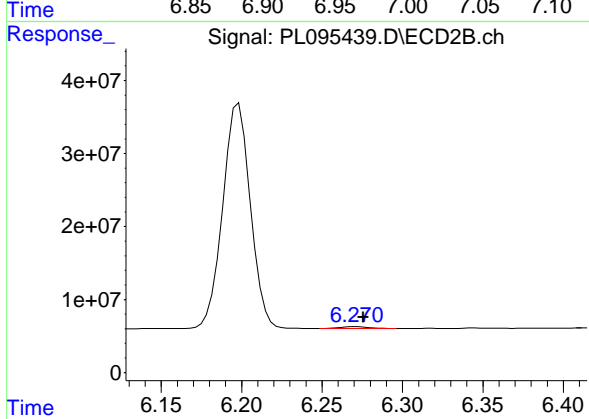
#17 4,4' -DDT

R.T.: 6.198 min
 Delta R.T.: -0.006 min
 Response: 368637048
 Conc: 107.28 ng/ml



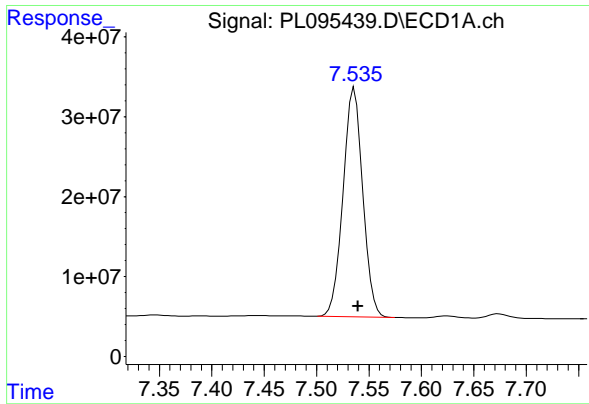
#18 Endrin aldehyde

R.T.: 6.959 min
 Delta R.T.: -0.005 min
 Response: 2168254
 Conc: 0.93 ng/ml m



#18 Endrin aldehyde

R.T.: 6.270 min
 Delta R.T.: -0.006 min
 Response: 2888600
 Conc: 1.11 ng/ml m



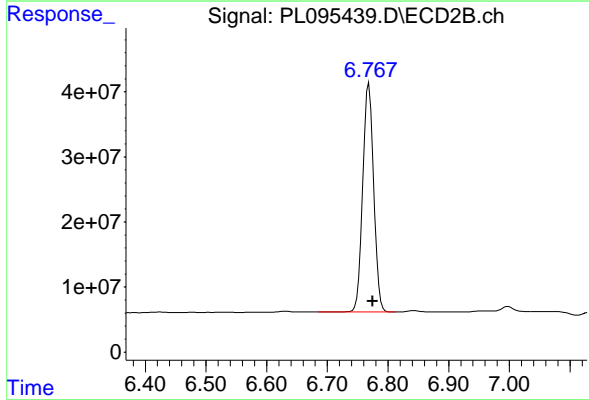
#20 Methoxychlor

R.T.: 7.536 min
 Delta R.T.: -0.004 min
 Response: 375987716
 Conc: 269.50 ng/ml

Instrument :
 ECD_L
 ClientSampleId :
 PEM

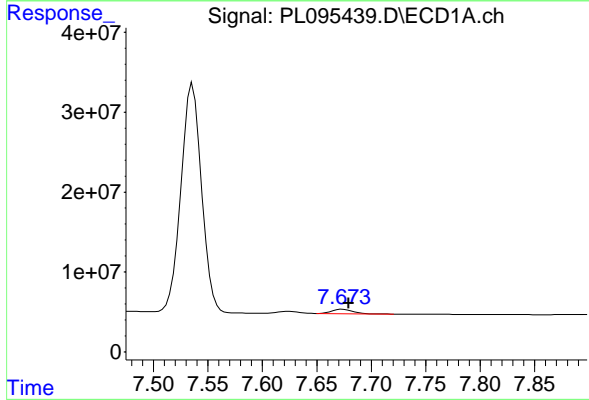
Manual Integrations
 APPROVED

Reviewed By :Abdul Mirza 04/29/2025
 Supervised By :mohammad ahmed 05/02/2025



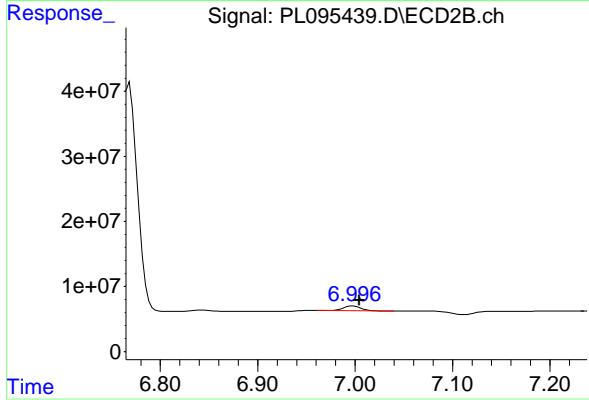
#20 Methoxychlor

R.T.: 6.769 min
 Delta R.T.: -0.006 min
 Response: 440409813
 Conc: 230.89 ng/ml



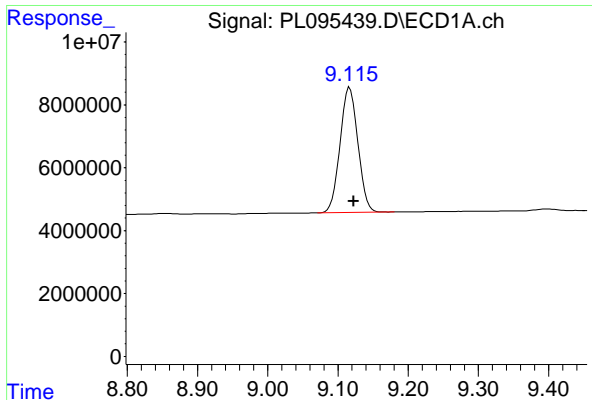
#21 Endrin ketone

R.T.: 7.674 min
 Delta R.T.: -0.005 min
 Response: 7348526
 Conc: 2.58 ng/ml



#21 Endrin ketone

R.T.: 6.998 min
 Delta R.T.: -0.007 min
 Response: 8581872
 Conc: 2.44 ng/ml



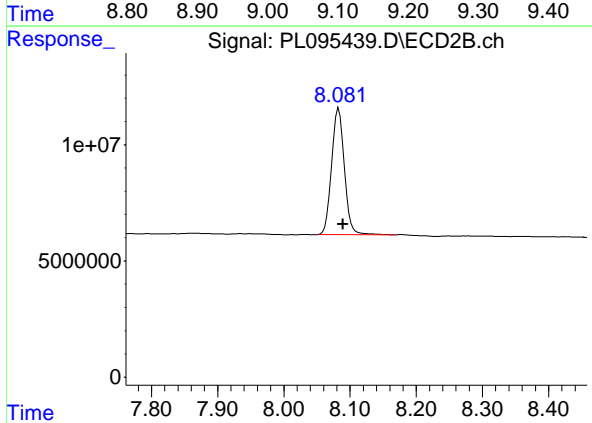
#28 Decachlorobiphenyl

R.T.: 9.117 min
 Delta R.T.: -0.006 min
 Response: 70253388
 Conc: 25.35 ng/ml

Instrument :
 ECD_L
 ClientSampleId :
 PEM

Manual Integrations
 APPROVED

Reviewed By :Abdul Mirza 04/29/2025
 Supervised By :mohammad ahmed 05/02/2025



#28 Decachlorobiphenyl

R.T.: 8.083 min
 Delta R.T.: -0.007 min
 Response: 72725496
 Conc: 24.58 ng/ml