

Data Path : Z:\pestpcbsrv\HPCHEM1\ECD_L\Data\PL043025\
 Data File : PL095440.D
 Signal(s) : Signal #1: ECD1A.ch Signal #2: ECD2B.ch
 Acq On : 28 Apr 2025 16:01
 Operator : AR\AJ
 Sample : PSTDCCC050
 Misc :
 ALS Vial : 4 Sample Multiplier: 1

Instrument :
 ECD_L
ClientSampleId :
 PSTDCCC050

Manual Integrations
APPROVED
 Reviewed By :Abdul Mirza 04/29/2025
 Supervised By :mohammad ahmed 05/02/2025

Integration File signal 1: autoint1.e
 Integration File signal 2: autoint2.e
 Quant Time: Apr 29 01:34:59 2025
 Quant Method : Z:\pestpcbsrv\HPCHEM1\ECD_L\methods\PL042325.M
 Quant Title : GC Extractables
 QLast Update : Wed Apr 23 16:23:18 2025
 Response via : Initial Calibration
 Integrator: ChemStation

Volume Inj. : 1 µl
 Signal #1 Phase : ZB-MR2 Signal #2 Phase: ZB-MR2
 Signal #1 Info : 30M x 0.32mm x0.5 Signal #2 Info : 30M x 0.32mm x0.25µm

Compound	RT#1	RT#2	Resp#1	Resp#2	ng/ml	ng/ml

System Monitoring Compounds						
1) SA Tetrachlo...	3.593	2.904	167.3E6	159.8E6	51.234	50.269
28) SA Decachlor...	9.116	8.083	154.3E6	161.8E6	55.674	54.678
Target Compounds						
2) A alpha-BHC	4.044	3.414	257.1E6	232.3E6	51.895	52.209
3) MA gamma-BHC...	4.375	3.747	243.7E6	223.0E6	51.469	50.705
4) MA Heptachlor	4.972	4.101	235.2E6	215.4E6	51.415	49.436
5) MB Aldrin	5.314	4.386	239.1E6	205.7E6	52.062	49.991
6) B beta-BHC	4.560	4.040	104.8E6	102.1E6	50.683	49.198
7) B delta-BHC	4.808	4.277	240.0E6	223.5E6	51.614m	50.996
8) B Heptachlo...	5.735	4.889	215.0E6	191.0E6	53.673	49.436
9) A Endosulfan I	6.118	5.262	205.5E6	183.9E6	54.126	50.236
10) B gamma-Chl...	5.989	5.140	220.5E6	197.0E6	54.052	48.611m
11) B alpha-Chl...	6.070	5.206	226.5E6	197.8E6	55.700	49.673
12) B 4,4'-DDE	6.239	5.392	219.9E6	193.0E6	56.088	47.455
13) MA Dieldrin	6.391	5.527	209.2E6	198.2E6	54.261	48.724
14) MA Endrin	6.619	5.802	166.9E6	155.7E6	52.421	42.778
15) B Endosulfa...	6.831	6.092	186.9E6	178.7E6	58.563	49.756
16) A 4,4'-DDD	6.748	5.944	166.2E6	165.7E6	58.711	50.708
17) MA 4,4'-DDT	7.064	6.198	159.4E6	146.2E6	55.966	42.538
18) B Endrin al...	6.960	6.270	132.7E6	134.5E6	57.199	51.464
19) B Endosulfa...	7.191	6.493	157.5E6	173.0E6	56.201m	52.133
20) A Methoxychlor	7.535	6.768	73516314	88053321	52.695	46.163
21) B Endrin ke...	7.674	6.999	169.3E6	199.6E6	59.372	56.679
22) Mirex	8.155	7.194	132.3E6	152.3E6	55.691	52.851m

(f)=RT Delta > 1/2 Window (#)=Amounts differ by > 25% (m)=manual int.

Data Path : Z:\pestpcbsrv\HPCHEM1\ECD_L\Data\PL043025\
 Data File : PL095440.D
 Signal(s) : Signal #1: ECD1A.ch Signal #2: ECD2B.ch
 Acq On : 28 Apr 2025 16:01
 Operator : AR\AJ
 Sample : PSTDCCC050
 Misc :
 ALS Vial : 4 Sample Multiplier: 1

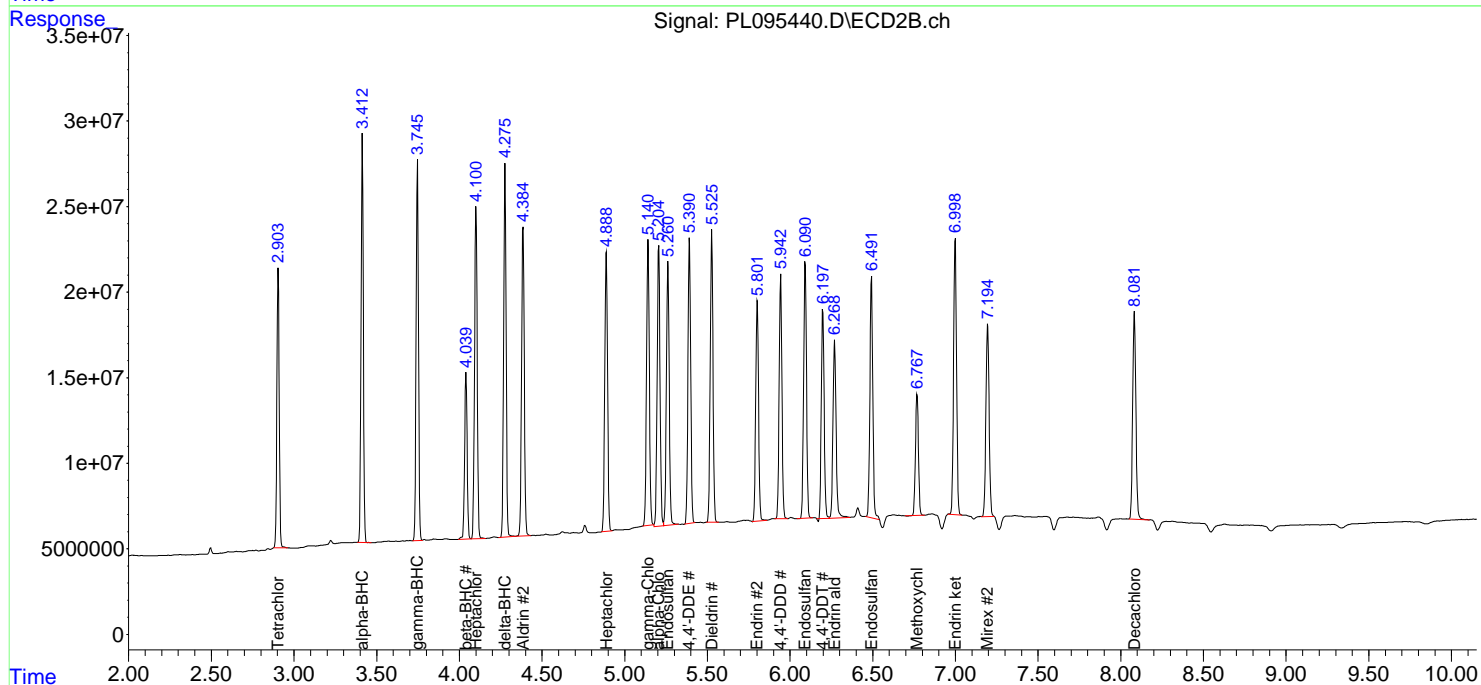
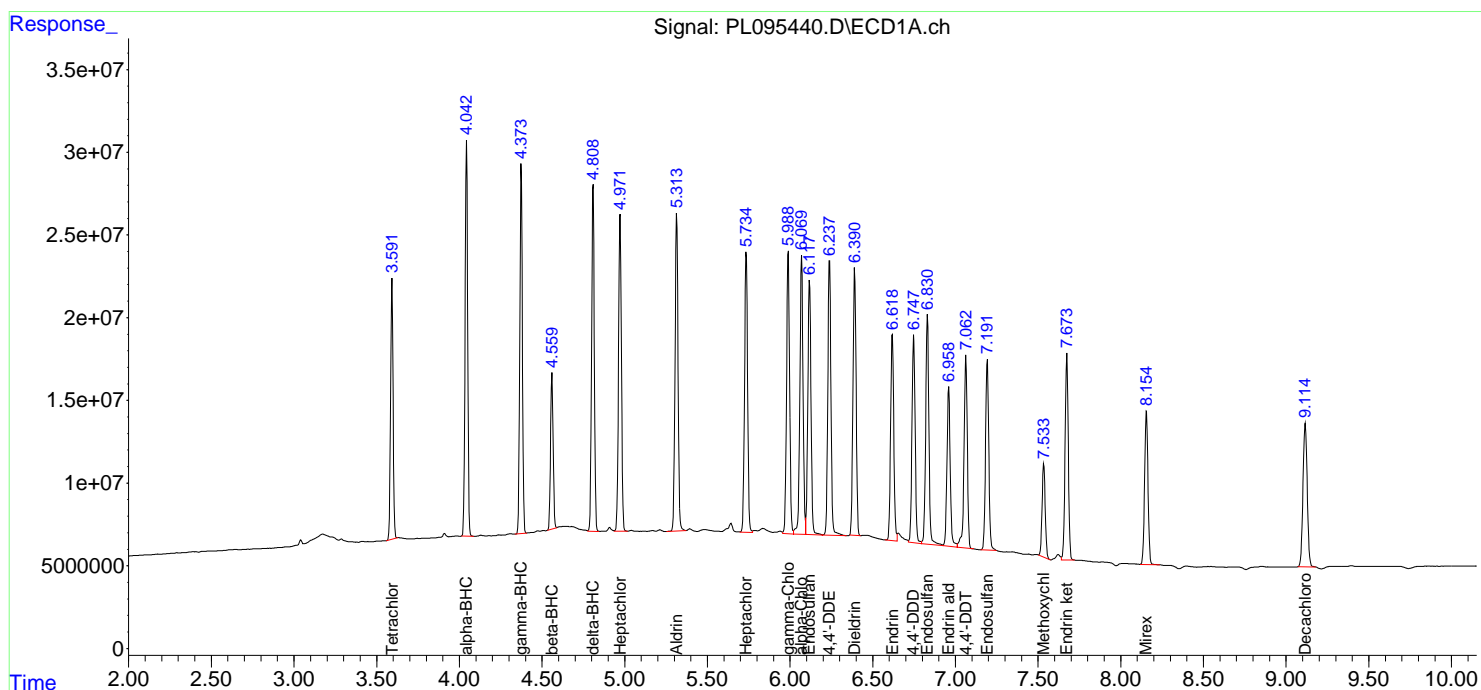
Instrument :
 ECD_L
 ClientSampleId :
 PSTDCCC050

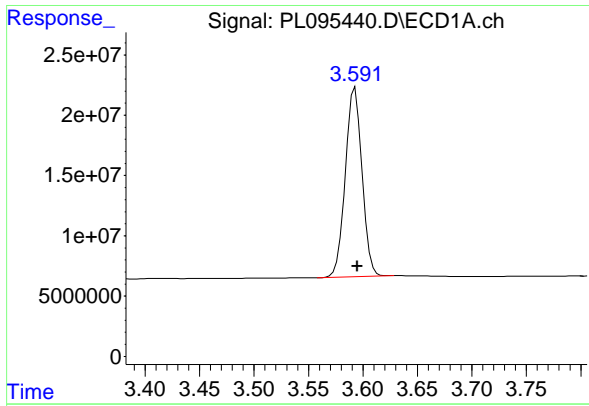
Manual Integrations
 APPROVED

Reviewed By :Abdul Mirza 04/29/2025
 Supervised By :mohammad ahmed 05/02/2025

Integration File signal 1: autoint1.e
 Integration File signal 2: autoint2.e
 Quant Time: Apr 29 01:34:59 2025
 Quant Method : Z:\pestpcbsrv\HPCHEM1\ECD_L\methods\PL042325.M
 Quant Title : GC Extractables
 QLast Update : Wed Apr 23 16:23:18 2025
 Response via : Initial Calibration
 Integrator: ChemStation

Volume Inj. : 1 µl
 Signal #1 Phase : ZB-MR1 Signal #2 Phase: ZB-MR2
 Signal #1 Info : 30M x 0.32mm x0.5 Signal #2 Info : 30M x 0.32mm x0.25µm





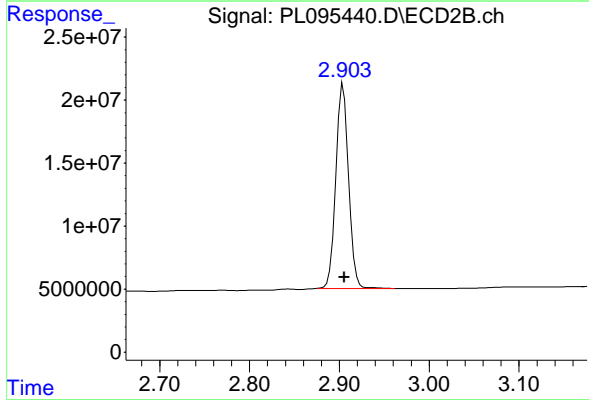
#1 Tetrachloro-m-xylene

R.T.: 3.593 min
 Delta R.T.: -0.002 min
 Response: 167262219
 Conc: 51.23 ng/ml

Instrument :
 ECD_L
 ClientSampleId :
 PSTDCCC050

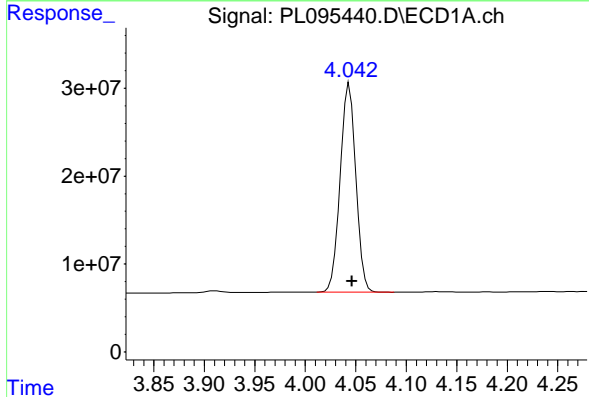
Manual Integrations
 APPROVED

Reviewed By :Abdul Mirza 04/29/2025
 Supervised By :mohammad ahmed 05/02/2025



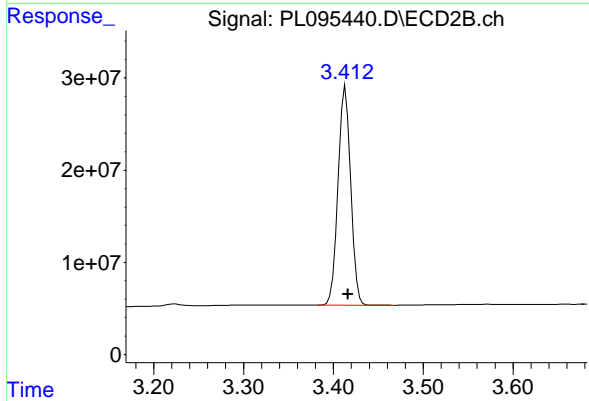
#1 Tetrachloro-m-xylene

R.T.: 2.904 min
 Delta R.T.: -0.001 min
 Response: 159843978
 Conc: 50.27 ng/ml



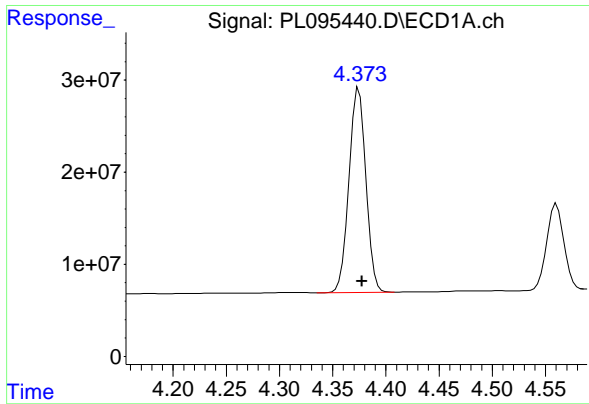
#2 alpha-BHC

R.T.: 4.044 min
 Delta R.T.: -0.003 min
 Response: 257072845
 Conc: 51.89 ng/ml



#2 alpha-BHC

R.T.: 3.414 min
 Delta R.T.: -0.003 min
 Response: 232264928
 Conc: 52.21 ng/ml



#3 gamma-BHC (Lindane)

R.T.: 4.375 min
 Delta R.T.: -0.003 min
 Response: 243652188
 Conc: 51.47 ng/ml

Instrument :

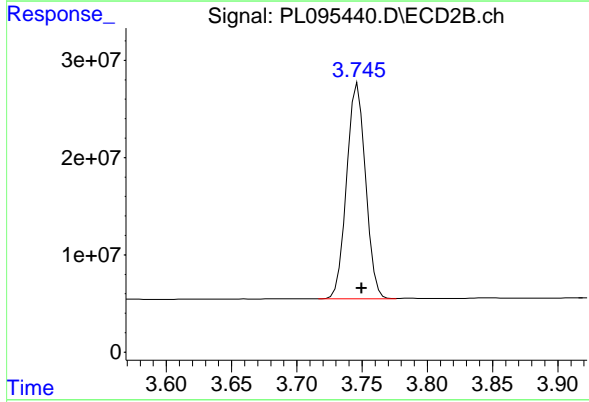
ECD_L

ClientSampleId :

PSTDCCC050

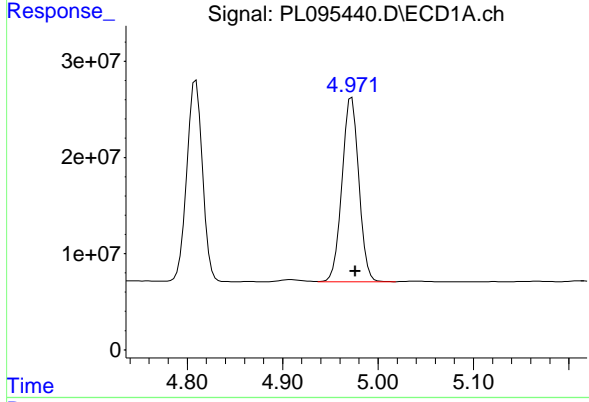
Manual Integrations
 APPROVED

Reviewed By :Abdul Mirza 04/29/2025
 Supervised By :mohammad ahmed 05/02/2025



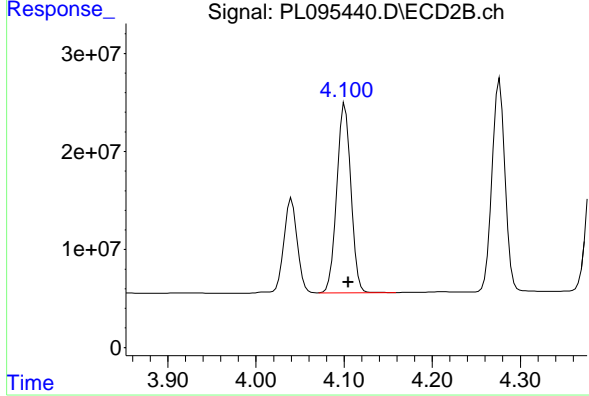
#3 gamma-BHC (Lindane)

R.T.: 3.747 min
 Delta R.T.: -0.003 min
 Response: 223013873
 Conc: 50.71 ng/ml



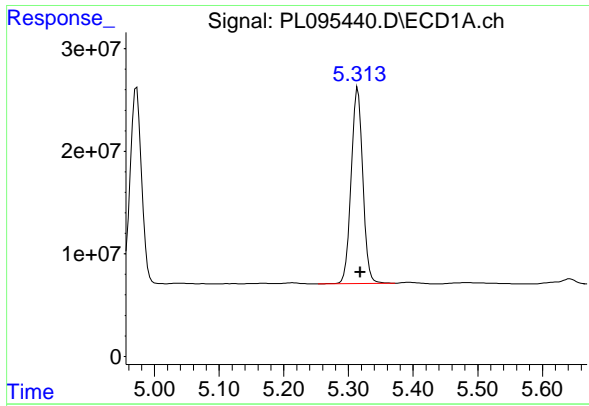
#4 Heptachlor

R.T.: 4.972 min
 Delta R.T.: -0.004 min
 Response: 235195258
 Conc: 51.41 ng/ml



#4 Heptachlor

R.T.: 4.101 min
 Delta R.T.: -0.003 min
 Response: 215375667
 Conc: 49.44 ng/ml



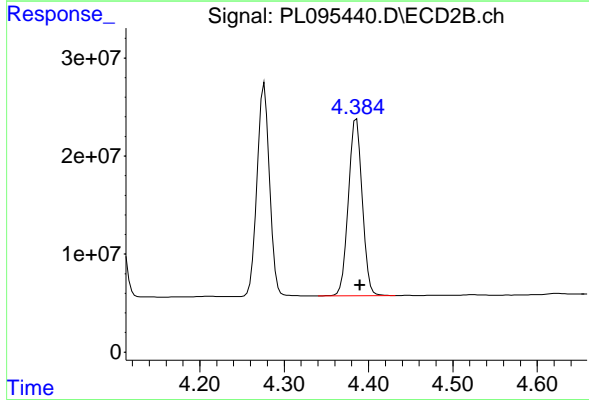
#5 Aldrin

R.T.: 5.314 min
 Delta R.T.: -0.004 min
 Response: 239123618
 Conc: 52.06 ng/ml

Instrument :
 ECD_L
 Client Sample Id :
 PSTDCCC050

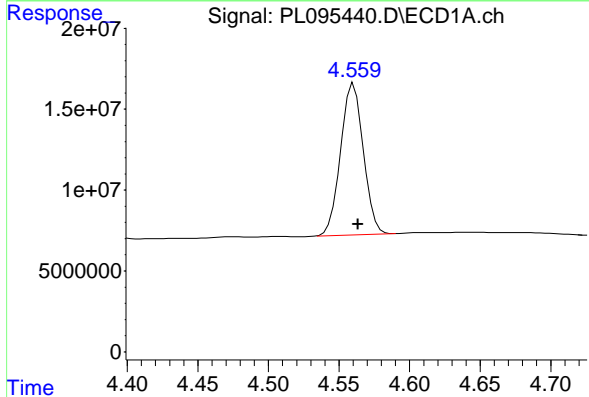
Manual Integrations
 APPROVED

Reviewed By :Abdul Mirza 04/29/2025
 Supervised By :mohammad ahmed 05/02/2025



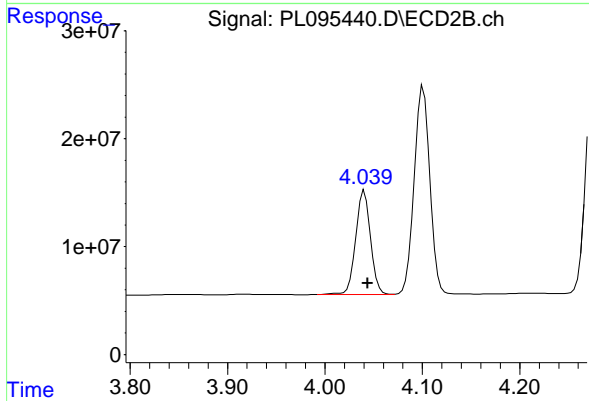
#5 Aldrin

R.T.: 4.386 min
 Delta R.T.: -0.004 min
 Response: 205747698
 Conc: 49.99 ng/ml



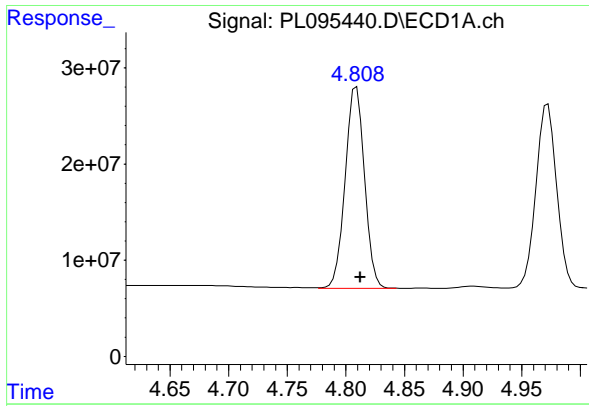
#6 beta-BHC

R.T.: 4.560 min
 Delta R.T.: -0.003 min
 Response: 104788017
 Conc: 50.68 ng/ml



#6 beta-BHC

R.T.: 4.040 min
 Delta R.T.: -0.003 min
 Response: 102128920
 Conc: 49.20 ng/ml



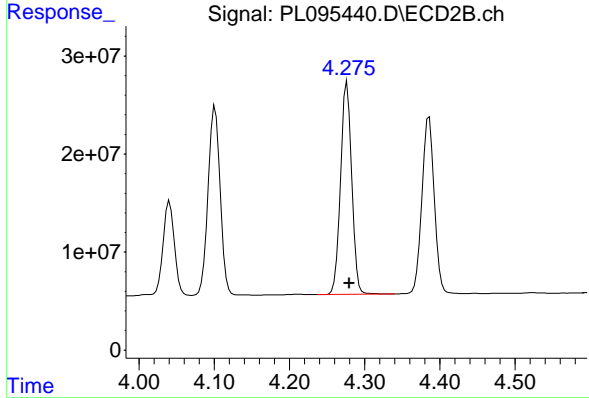
#7 delta-BHC

R.T.: 4.808 min
 Delta R.T.: -0.005 min
 Response: 240041813
 Conc: 51.61 ng/ml

Instrument :
 ECD_L
 Client Sample Id :
 PSTDCCC050

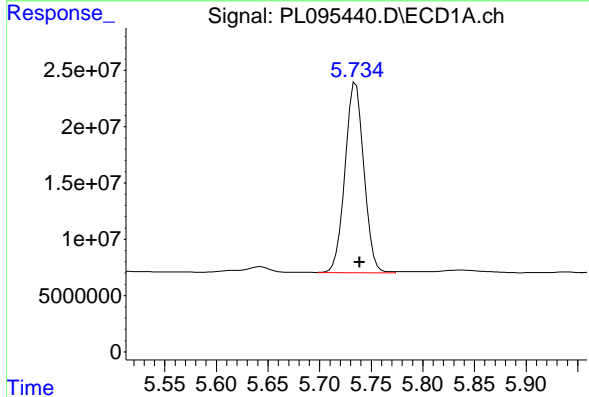
Manual Integrations
 APPROVED

Reviewed By :Abdul Mirza 04/29/2025
 Supervised By :mohammad ahmed 05/02/2025



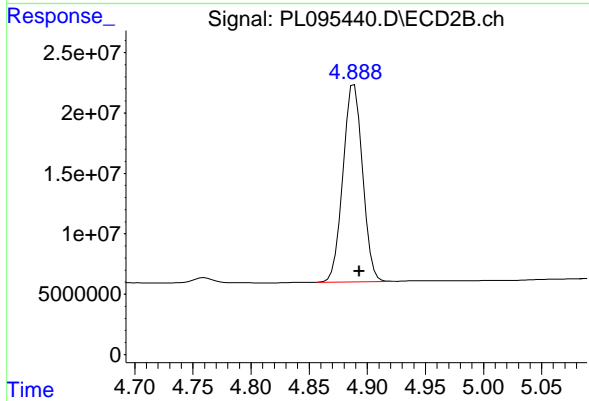
#7 delta-BHC

R.T.: 4.277 min
 Delta R.T.: -0.003 min
 Response: 223463127
 Conc: 51.00 ng/ml



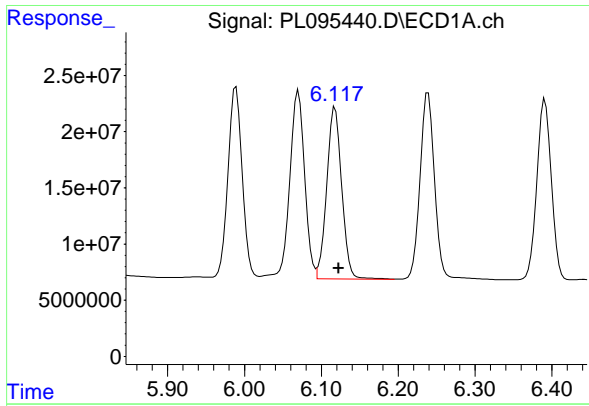
#8 Heptachlor epoxide

R.T.: 5.735 min
 Delta R.T.: -0.004 min
 Response: 214968820
 Conc: 53.67 ng/ml



#8 Heptachlor epoxide

R.T.: 4.889 min
 Delta R.T.: -0.004 min
 Response: 190953783
 Conc: 49.44 ng/ml



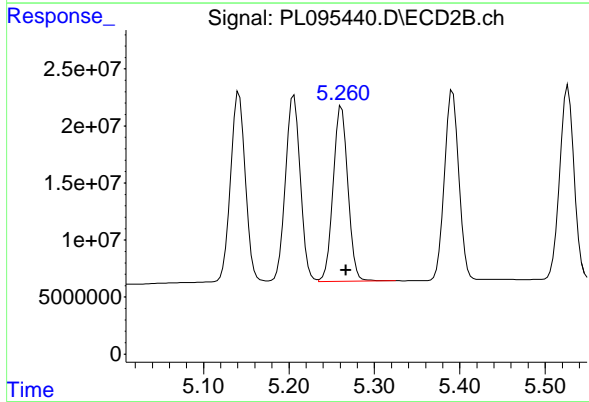
#9 Endosulfan I

R.T.: 6.118 min
 Delta R.T.: -0.004 min
 Response: 205545727
 Conc: 54.13 ng/ml

Instrument : ECD_L
 Client Sample Id : PSTDCCC050

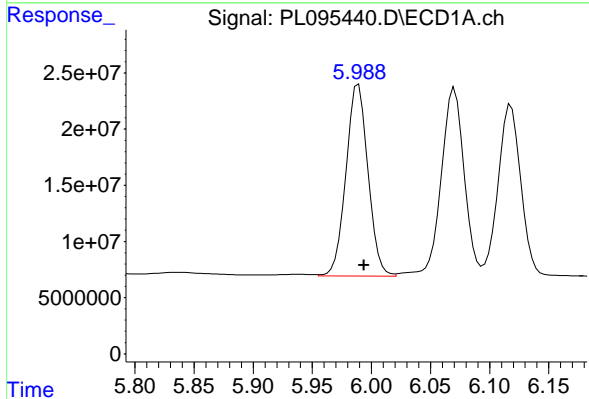
Manual Integrations
 APPROVED

Reviewed By :Abdul Mirza 04/29/2025
 Supervised By :mohammad ahmed 05/02/2025



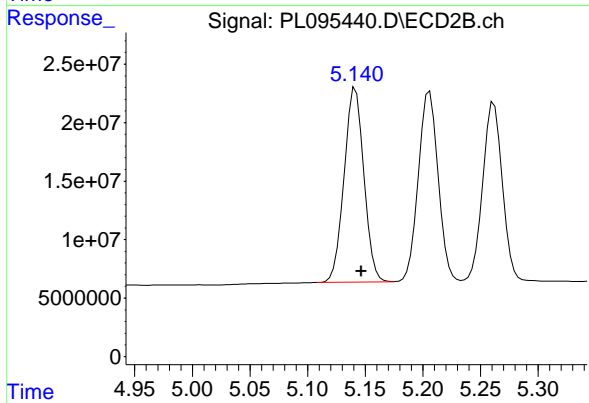
#9 Endosulfan I

R.T.: 5.262 min
 Delta R.T.: -0.005 min
 Response: 183883855
 Conc: 50.24 ng/ml



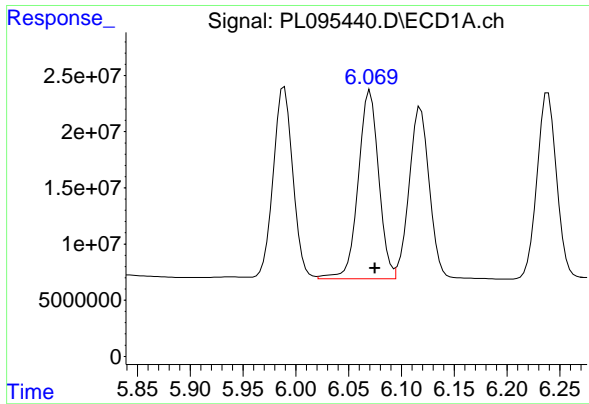
#10 gamma-Chlordane

R.T.: 5.989 min
 Delta R.T.: -0.004 min
 Response: 220495708
 Conc: 54.05 ng/ml



#10 gamma-Chlordane

R.T.: 5.140 min
 Delta R.T.: -0.007 min
 Response: 197005514
 Conc: 48.61 ng/ml m



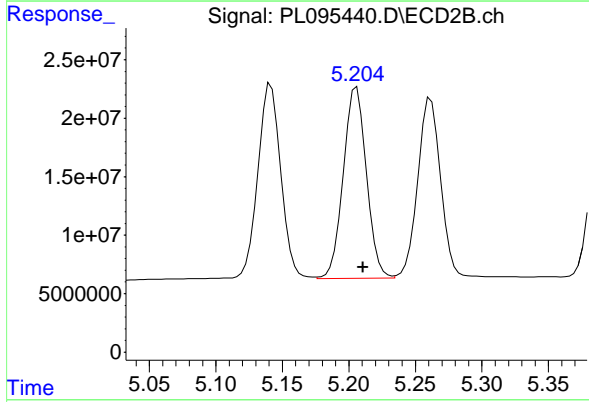
#11 alpha-Chlordane

R.T.: 6.070 min
 Delta R.T.: -0.004 min
 Response: 226480961
 Conc: 55.70 ng/ml

Instrument : ECD_L
 ClientSampleId : PSTDCCC050

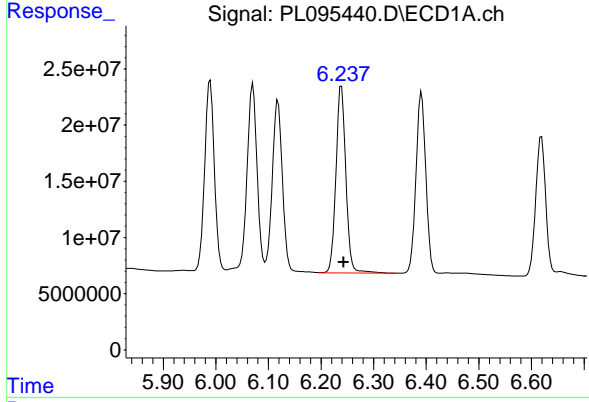
Manual Integrations
 APPROVED

Reviewed By :Abdul Mirza 04/29/2025
 Supervised By :mohammad ahmed 05/02/2025



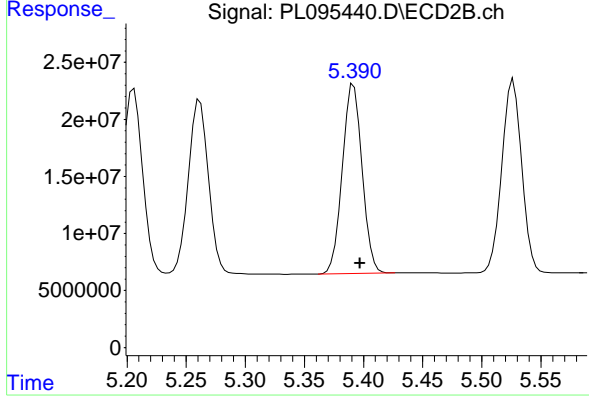
#11 alpha-Chlordane

R.T.: 5.206 min
 Delta R.T.: -0.005 min
 Response: 197750673
 Conc: 49.67 ng/ml



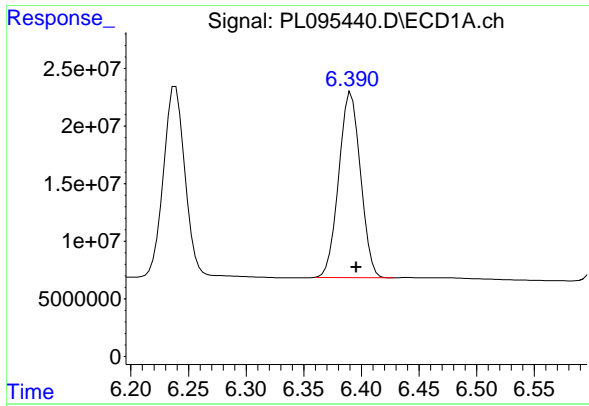
#12 4,4'-DDE

R.T.: 6.239 min
 Delta R.T.: -0.004 min
 Response: 219897725
 Conc: 56.09 ng/ml



#12 4,4'-DDE

R.T.: 5.392 min
 Delta R.T.: -0.005 min
 Response: 192997790
 Conc: 47.45 ng/ml



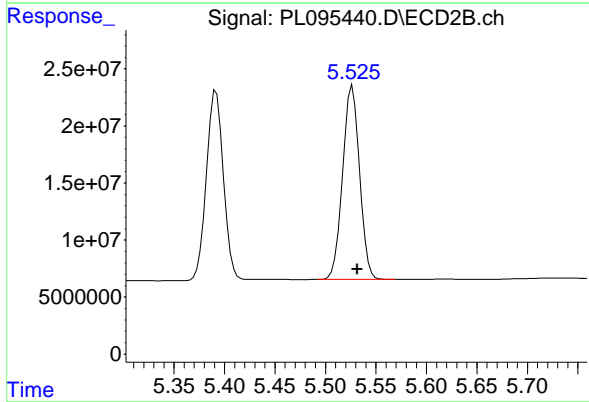
#13 Dieldrin

R.T.: 6.391 min
 Delta R.T.: -0.005 min
 Response: 209166326
 Conc: 54.26 ng/ml

Instrument :
 ECD_L
 Client Sample Id :
 PSTDCCC050

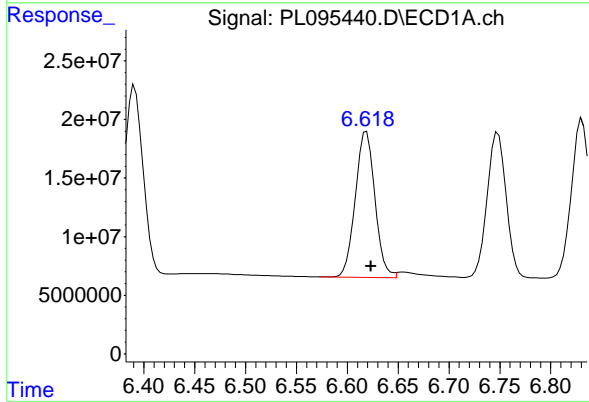
Manual Integrations
 APPROVED

Reviewed By :Abdul Mirza 04/29/2025
 Supervised By :mohammad ahmed 05/02/2025



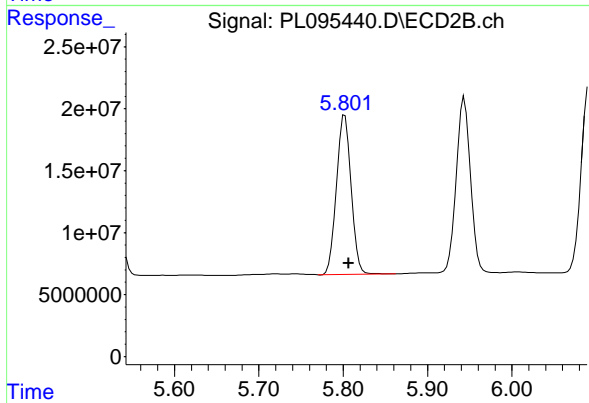
#13 Dieldrin

R.T.: 5.527 min
 Delta R.T.: -0.005 min
 Response: 198164030
 Conc: 48.72 ng/ml



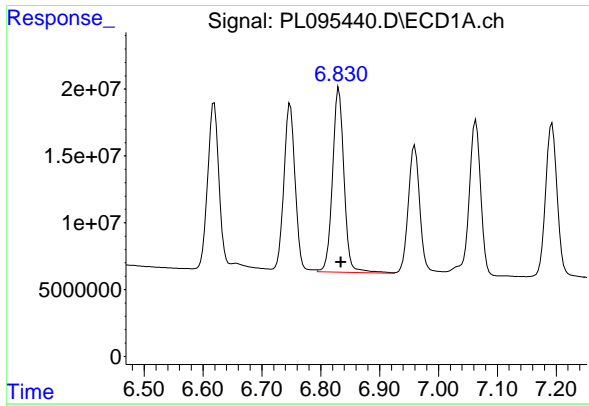
#14 Endrin

R.T.: 6.619 min
 Delta R.T.: -0.004 min
 Response: 166947576
 Conc: 52.42 ng/ml



#14 Endrin

R.T.: 5.802 min
 Delta R.T.: -0.005 min
 Response: 155741444
 Conc: 42.78 ng/ml



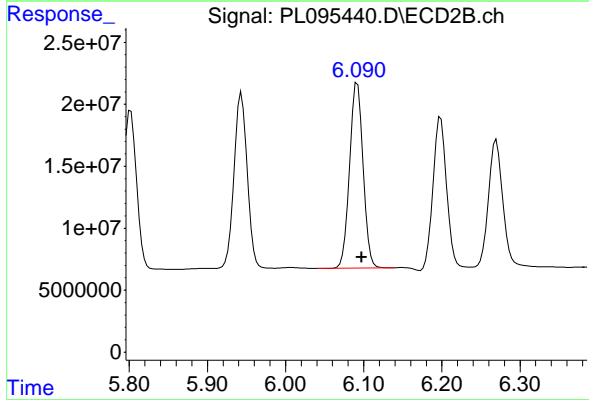
#15 Endosulfan II

R.T.: 6.831 min
 Delta R.T.: -0.004 min
 Response: 186940626
 Conc: 58.56 ng/ml

Instrument :
 ECD_L
 ClientSampleId :
 PSTDCCC050

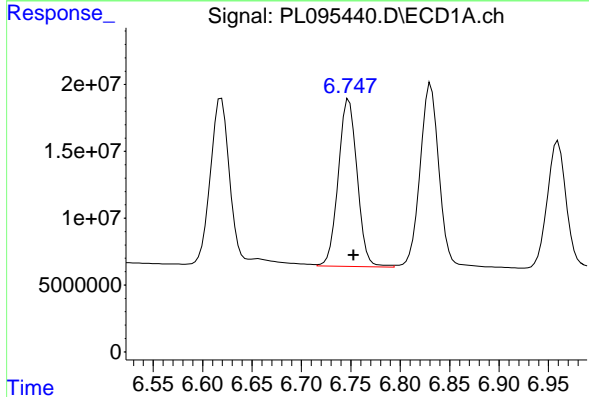
Manual Integrations
 APPROVED

Reviewed By :Abdul Mirza 04/29/2025
 Supervised By :mohammad ahmed 05/02/2025



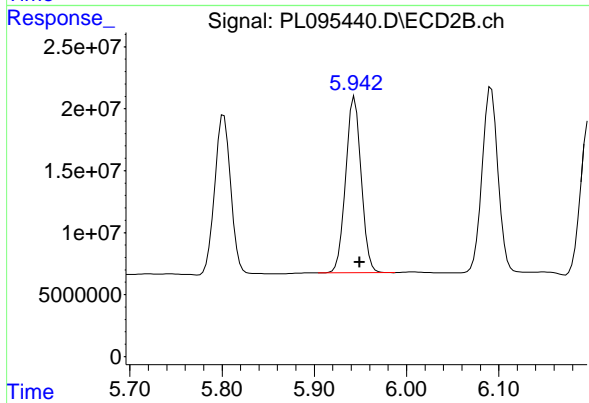
#15 Endosulfan II

R.T.: 6.092 min
 Delta R.T.: -0.005 min
 Response: 178680070
 Conc: 49.76 ng/ml



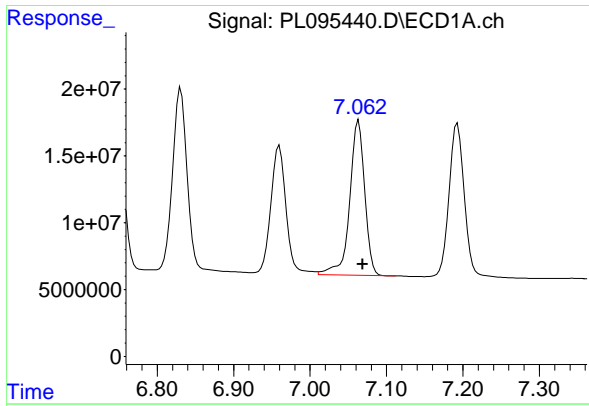
#16 4,4'-DDD

R.T.: 6.748 min
 Delta R.T.: -0.005 min
 Response: 166208955
 Conc: 58.71 ng/ml



#16 4,4'-DDD

R.T.: 5.944 min
 Delta R.T.: -0.006 min
 Response: 165652788
 Conc: 50.71 ng/ml



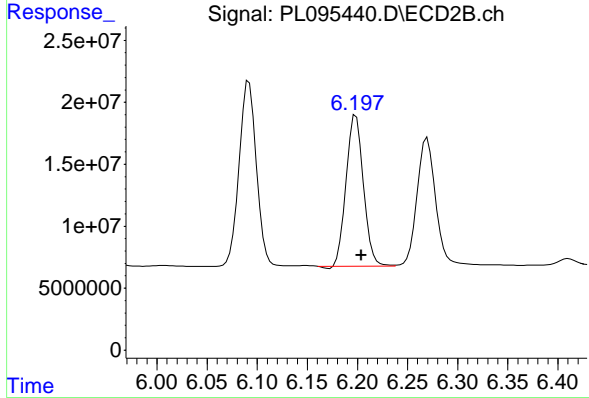
#17 4,4' -DDT

R.T.: 7.064 min
 Delta R.T.: -0.005 min
 Response: 159422273
 Conc: 55.97 ng/ml

Instrument :
 ECD_L
 Client Sample Id :
 PSTDCCC050

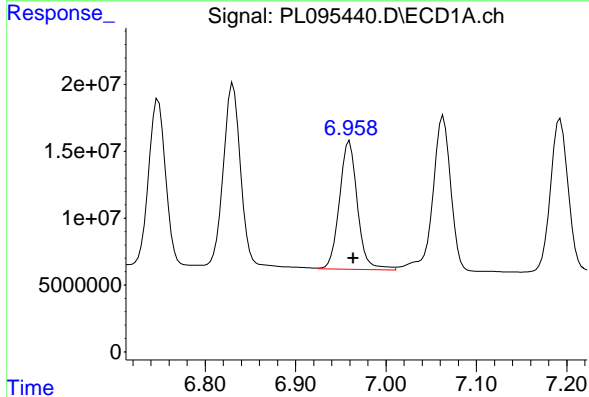
Manual Integrations
 APPROVED

Reviewed By :Abdul Mirza 04/29/2025
 Supervised By :mohammad ahmed 05/02/2025



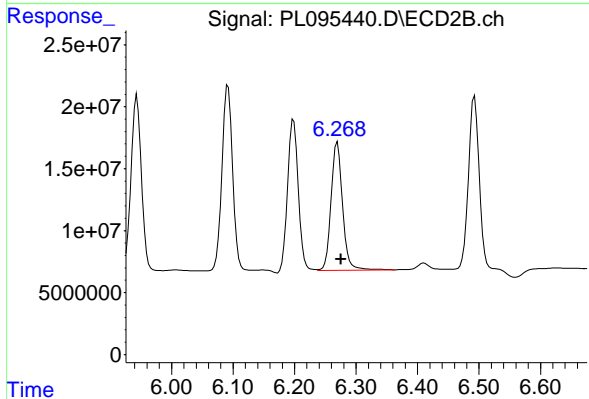
#17 4,4' -DDT

R.T.: 6.198 min
 Delta R.T.: -0.005 min
 Response: 146167973
 Conc: 42.54 ng/ml



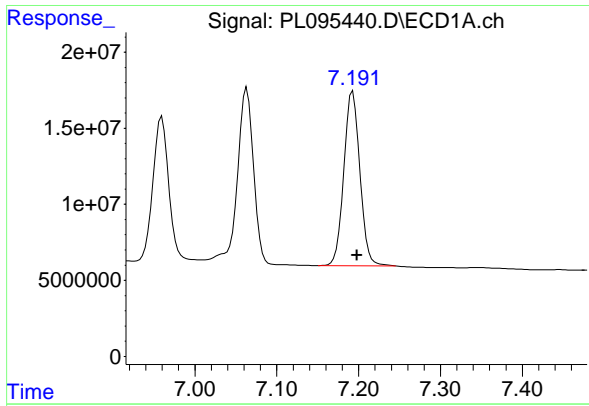
#18 Endrin aldehyde

R.T.: 6.960 min
 Delta R.T.: -0.004 min
 Response: 132747755
 Conc: 57.20 ng/ml



#18 Endrin aldehyde

R.T.: 6.270 min
 Delta R.T.: -0.006 min
 Response: 134483009
 Conc: 51.46 ng/ml



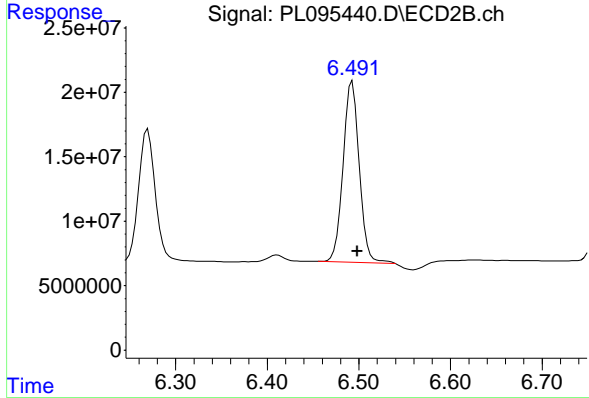
#19 Endosulfan Sulfate

R.T.: 7.191 min
 Delta R.T.: -0.007 min
 Response: 157462880
 Conc: 56.20 ng/ml

Instrument :
 ECD_L
 ClientSampleId :
 PSTDCCC050

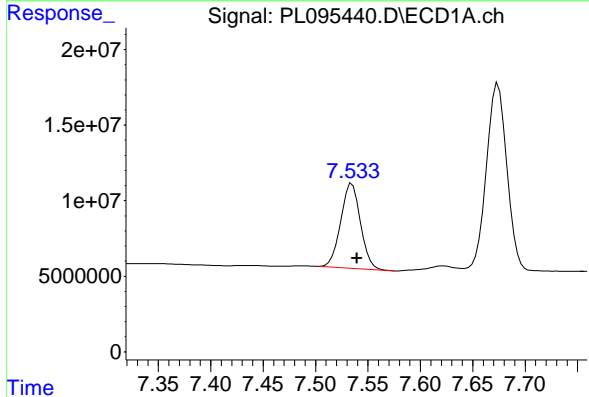
Manual Integrations
 APPROVED

Reviewed By :Abdul Mirza 04/29/2025
 Supervised By :mohammad ahmed 05/02/2025



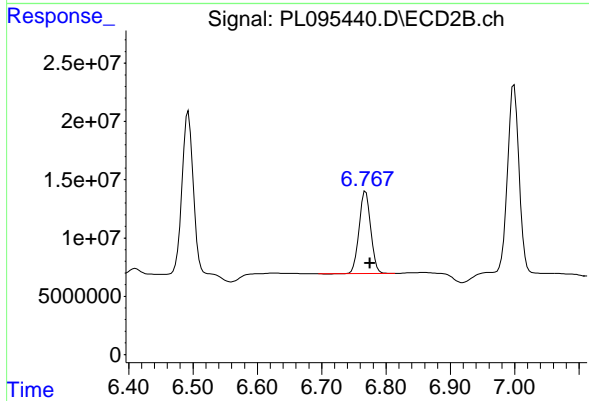
#19 Endosulfan Sulfate

R.T.: 6.493 min
 Delta R.T.: -0.006 min
 Response: 172972314
 Conc: 52.13 ng/ml



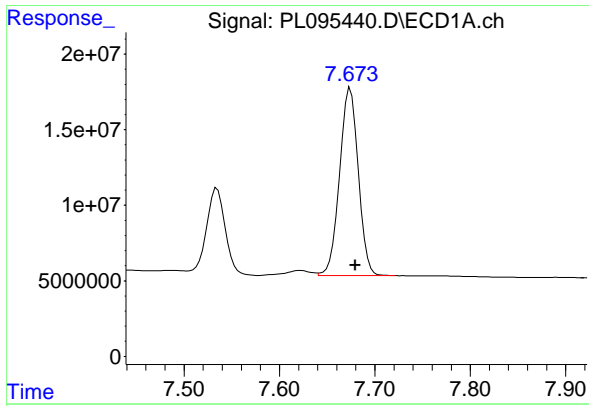
#20 Methoxychlor

R.T.: 7.535 min
 Delta R.T.: -0.005 min
 Response: 73516314
 Conc: 52.69 ng/ml



#20 Methoxychlor

R.T.: 6.768 min
 Delta R.T.: -0.006 min
 Response: 88053321
 Conc: 46.16 ng/ml



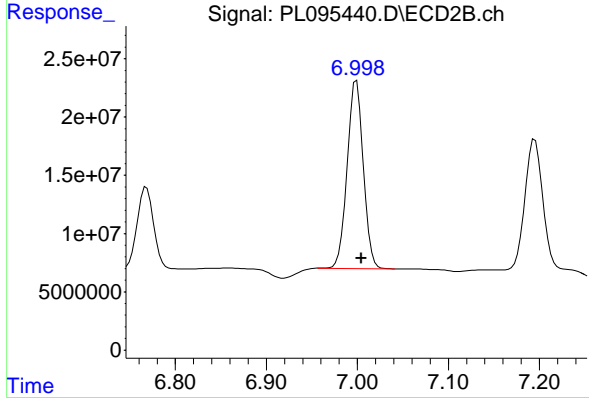
#21 Endrin ketone

R.T.: 7.674 min
 Delta R.T.: -0.005 min
 Response: 169263018
 Conc: 59.37 ng/ml

Instrument :
 ECD_L
 ClientSampleId :
 PSTDCCC050

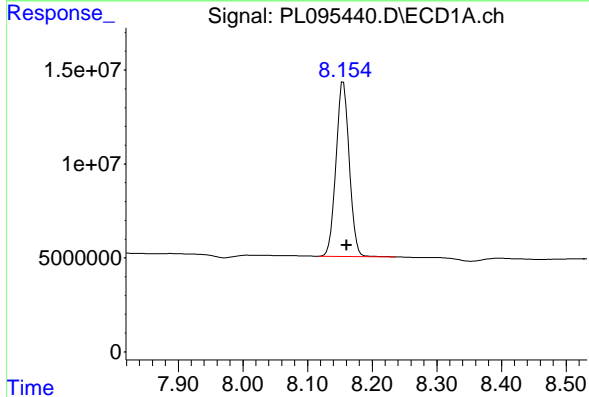
Manual Integrations
 APPROVED

Reviewed By :Abdul Mirza 04/29/2025
 Supervised By :mohammad ahmed 05/02/2025



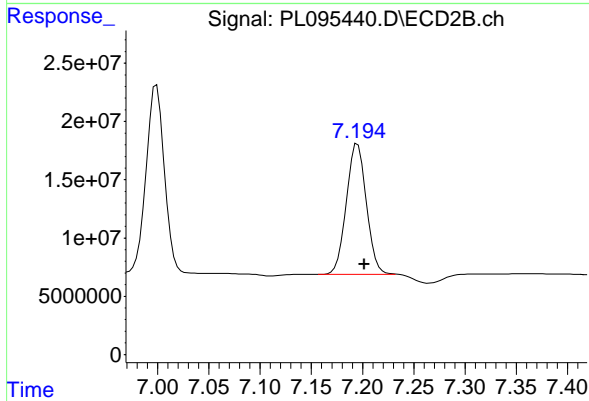
#21 Endrin ketone

R.T.: 6.999 min
 Delta R.T.: -0.005 min
 Response: 199582150
 Conc: 56.68 ng/ml



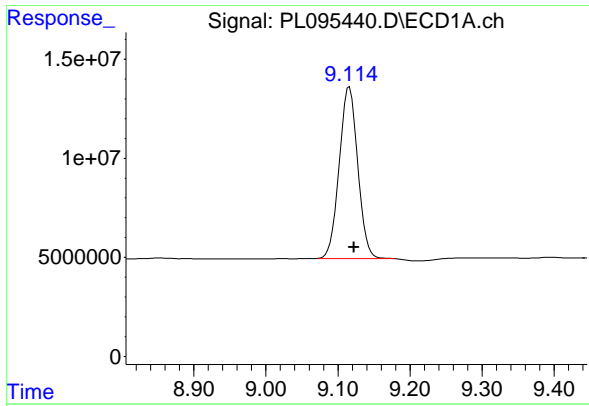
#22 Mirex

R.T.: 8.155 min
 Delta R.T.: -0.005 min
 Response: 132324817
 Conc: 55.69 ng/ml



#22 Mirex

R.T.: 7.194 min
 Delta R.T.: -0.008 min
 Response: 152337636
 Conc: 52.85 ng/ml m



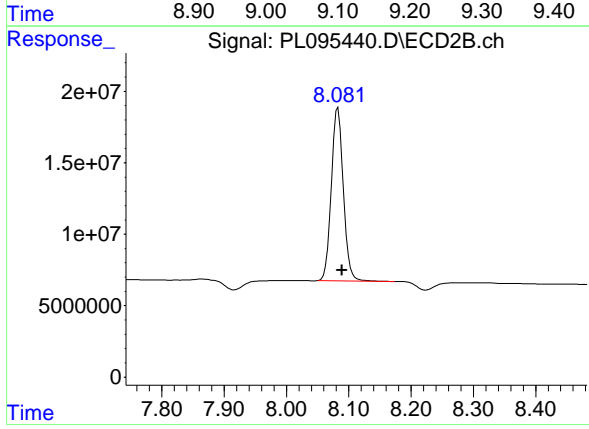
#28 Decachlorobiphenyl

R.T.: 9.116 min
Delta R.T.: -0.006 min
Response: 154263194
Conc: 55.67 ng/ml

Instrument :
ECD_L
ClientSampleId :
PSTDCCC050

Manual Integrations
APPROVED

Reviewed By :Abdul Mirza 04/29/2025
Supervised By :mohammad ahmed 05/02/2025



#28 Decachlorobiphenyl

R.T.: 8.083 min
Delta R.T.: -0.007 min
Response: 161807409
Conc: 54.68 ng/ml