

Data Path : Z:\pestpcbsrv\HPCHEM1\ECD\_L\Data\PL043025\  
 Data File : PL095451.D  
 Signal(s) : Signal #1: ECD1A.ch Signal #2: ECD2B.ch  
 Acq On : 28 Apr 2025 18:58  
 Operator : AR\AJ  
 Sample : PSTDCCC050  
 Misc :  
 ALS Vial : 4 Sample Multiplier: 1

**Instrument :**  
 ECD\_L  
**ClientSampleId :**  
 PSTDCCC050

**Manual Integrations**  
**APPROVED**  
 Reviewed By :Abdul Mirza 04/29/2025  
 Supervised By :mohammad ahmed 05/02/2025

Integration File signal 1: autoint1.e  
 Integration File signal 2: autoint2.e  
 Quant Time: Apr 29 01:36:43 2025  
 Quant Method : Z:\pestpcbsrv\HPCHEM1\ECD\_L\methods\PL042325.M  
 Quant Title : GC Extractables  
 QLast Update : Wed Apr 23 16:23:18 2025  
 Response via : Initial Calibration  
 Integrator: ChemStation

Volume Inj. : 1 µl  
 Signal #1 Phase : ZB-MR2 Signal #2 Phase: ZB-MR2  
 Signal #1 Info : 30M x 0.32mm x0.5 Signal #2 Info : 30M x 0.32mm x0.25µm

Compound	RT#1	RT#2	Resp#1	Resp#2	ng/ml	ng/ml
-----						
System Monitoring Compounds						
1) SA Tetrachlo...	3.592	2.904	172.6E6	172.6E6	52.859	54.288
28) SA Decachlor...	9.114	8.082	151.8E6	167.5E6	54.790	56.619
Target Compounds						
2) A alpha-BHC	4.043	3.414	264.3E6	253.5E6	53.358	56.988
3) MA gamma-BHC...	4.373	3.747	251.0E6	243.6E6	53.023m	55.392
4) MA Heptachlor	4.972	4.101	238.1E6	231.3E6	52.042	53.082
5) MB Aldrin	5.314	4.386	244.2E6	224.6E6	53.177	54.565
6) B beta-BHC	4.560	4.040	107.7E6	111.1E6	52.085	53.537
7) B delta-BHC	4.807	4.276	245.7E6	242.7E6	52.822m	55.377
8) B Heptachlo...	5.735	4.888	216.9E6	208.2E6	54.167	53.897
9) A Endosulfan I	6.117	5.261	207.4E6	198.2E6	54.611	54.141
10) B gamma-Chl...	5.989	5.141	224.0E6	217.3E6	54.922	53.626
11) B alpha-Chl...	6.070	5.205	222.7E6	214.3E6	54.771	53.825
12) B 4,4'-DDE	6.238	5.391	214.8E6	216.2E6	54.779	53.153
13) MA Dieldrin	6.391	5.526	213.1E6	216.7E6	55.288	53.277
14) MA Endrin	6.618	5.801	169.3E6	181.8E6	53.148	49.941
15) B Endosulfa...	6.830	6.091	182.0E6	194.3E6	57.016	54.107
16) A 4,4'-DDD	6.748	5.943	166.5E6	181.3E6	58.812	55.510
17) MA 4,4'-DDT	7.063	6.197	154.9E6	178.2E6	54.389	51.873
18) B Endrin al...	6.959	6.269	130.2E6	142.0E6	56.110	54.358
19) B Endosulfa...	7.193	6.492	155.7E6	179.8E6	55.555	54.197
20) A Methoxychlor	7.534	6.767	72562078	96009994	52.011	50.335m
21) B Endrin ke...	7.674	6.997	165.6E6	210.9E6	58.092	59.902m
22) Mirex	8.155	7.193	131.4E6	162.0E6	55.285	56.187m

(f)=RT Delta > 1/2 Window (#)=Amounts differ by > 25% (m)=manual int.

Data Path : Z:\pestpcbsrv\HPCHEM1\ECD\_L\Data\PL043025\  
 Data File : PL095451.D  
 Signal(s) : Signal #1: ECD1A.ch Signal #2: ECD2B.ch  
 Acq On : 28 Apr 2025 18:58  
 Operator : AR\AJ  
 Sample : PSTDCCC050  
 Misc :  
 ALS Vial : 4 Sample Multiplier: 1

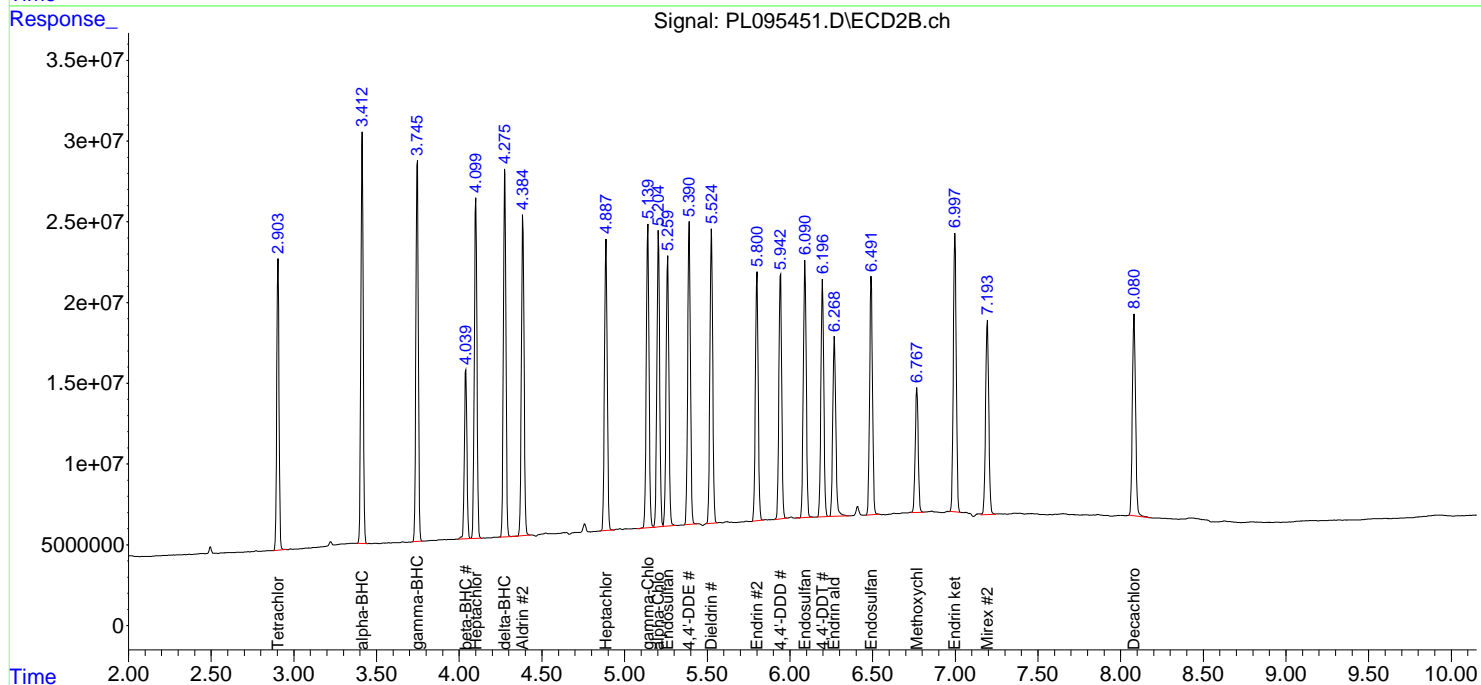
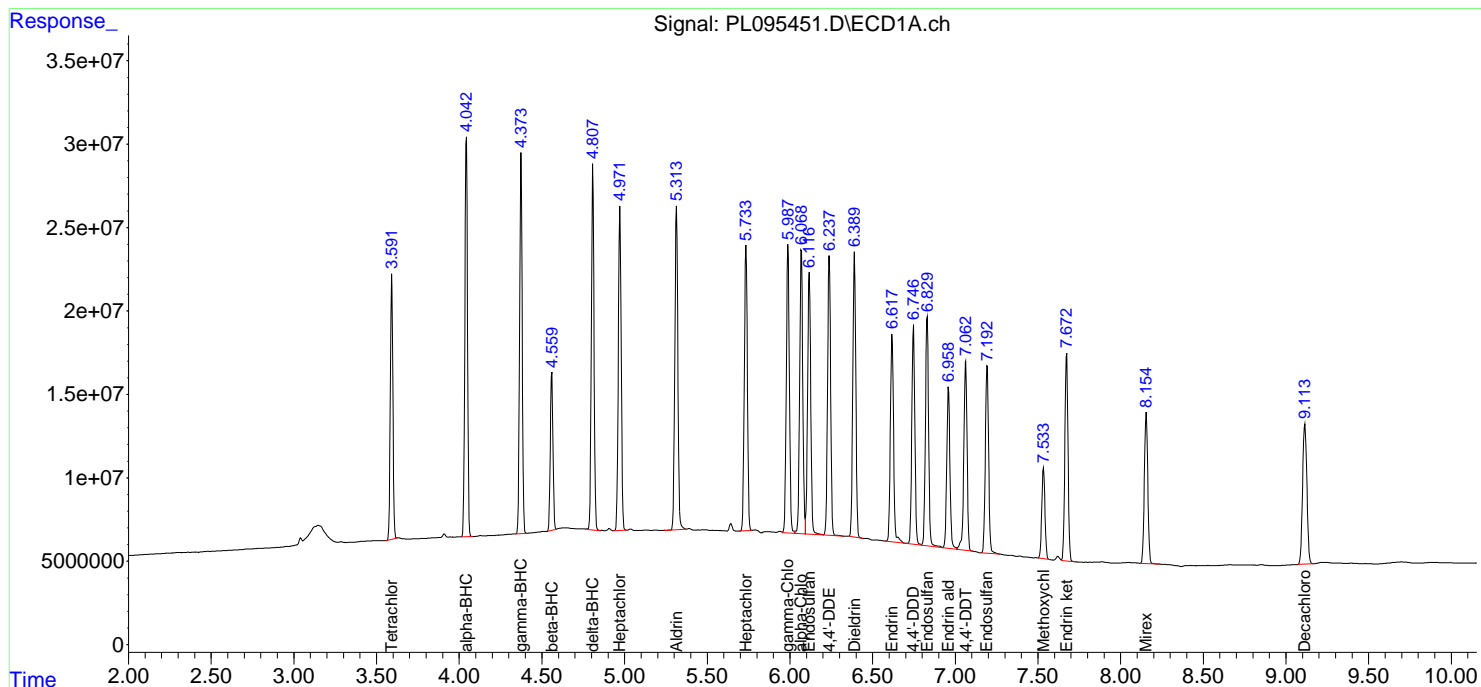
Instrument :  
 ECD\_L  
 ClientSampleId :  
 PSTDCCC050

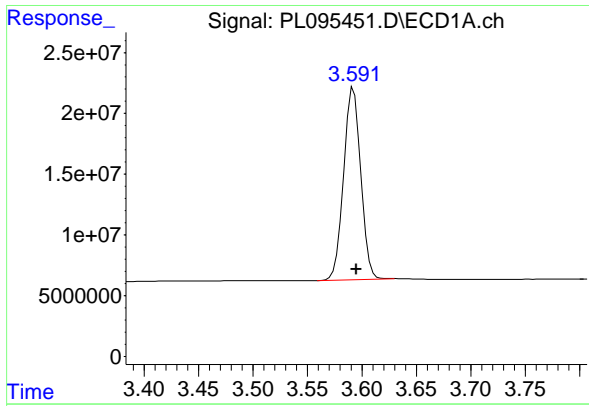
Manual Integrations  
 APPROVED

Reviewed By :Abdul Mirza 04/29/2025  
 Supervised By :mohammad ahmed 05/02/2025

Integration File signal 1: autoint1.e  
 Integration File signal 2: autoint2.e  
 Quant Time: Apr 29 01:36:43 2025  
 Quant Method : Z:\pestpcbsrv\HPCHEM1\ECD\_L\methods\PL042325.M  
 Quant Title : GC Extractables  
 QLast Update : Wed Apr 23 16:23:18 2025  
 Response via : Initial Calibration  
 Integrator: ChemStation

Volume Inj. : 1 µl  
 Signal #1 Phase : ZB-MR1 Signal #2 Phase: ZB-MR2  
 Signal #1 Info : 30M x 0.32mm x0.5 Signal #2 Info : 30M x 0.32mm x0.25µm





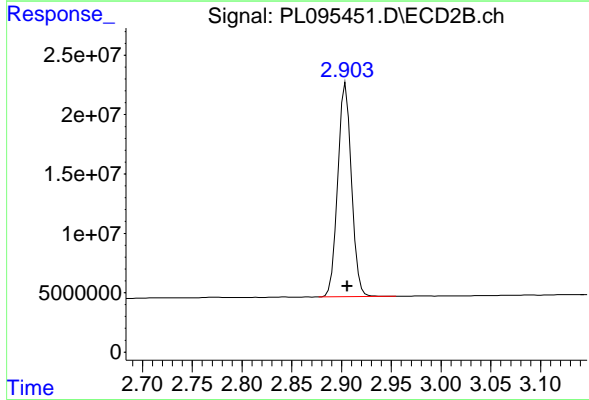
#1 Tetrachloro-m-xylene

R.T.: 3.592 min  
 Delta R.T.: -0.003 min  
 Response: 172565826  
 Conc: 52.86 ng/ml

Instrument :  
 ECD\_L  
 Client Sample Id :  
 PSTDCCC050

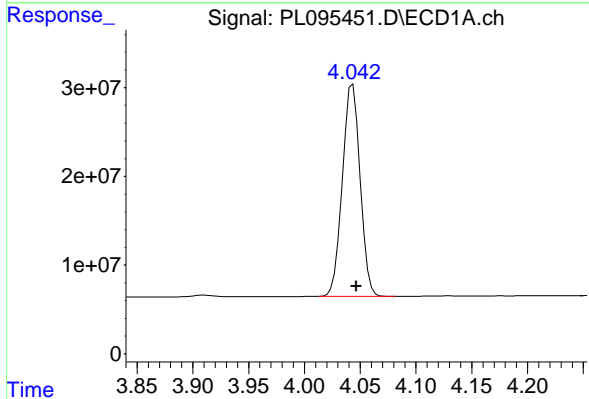
Manual Integrations  
 APPROVED

Reviewed By :Abdul Mirza 04/29/2025  
 Supervised By :mohammad ahmed 05/02/2025



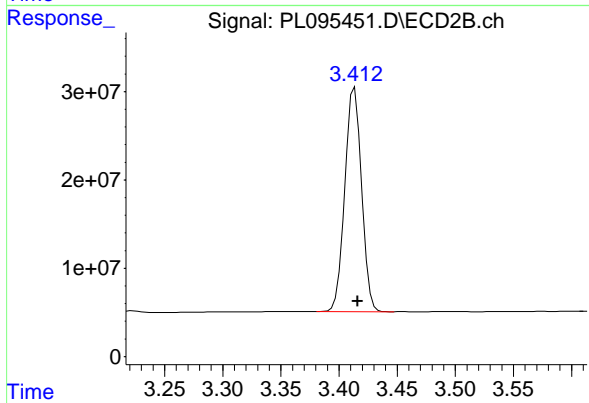
#1 Tetrachloro-m-xylene

R.T.: 2.904 min  
 Delta R.T.: -0.001 min  
 Response: 172620852  
 Conc: 54.29 ng/ml



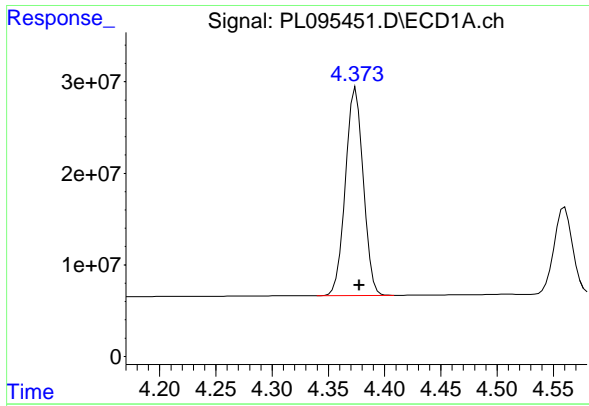
#2 alpha-BHC

R.T.: 4.043 min  
 Delta R.T.: -0.003 min  
 Response: 264320892  
 Conc: 53.36 ng/ml



#2 alpha-BHC

R.T.: 3.414 min  
 Delta R.T.: -0.003 min  
 Response: 253523716  
 Conc: 56.99 ng/ml



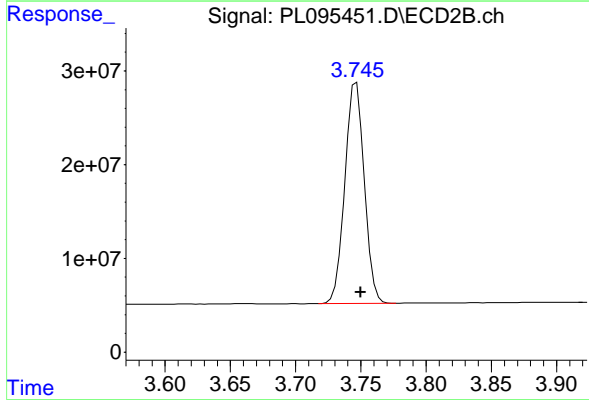
#3 gamma-BHC (Lindane)

R.T.: 4.373 min  
 Delta R.T.: -0.004 min  
 Response: 251007333  
 Conc: 53.02 ng/ml

Instrument :  
 ECD\_L  
 ClientSampleId :  
 PSTDCCC050

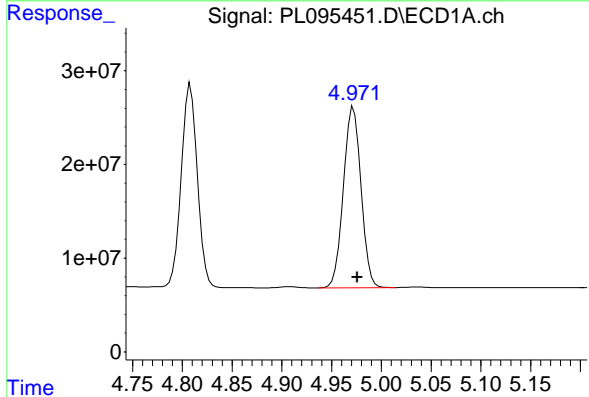
Manual Integrations  
 APPROVED

Reviewed By :Abdul Mirza 04/29/2025  
 Supervised By :mohammad ahmed 05/02/2025



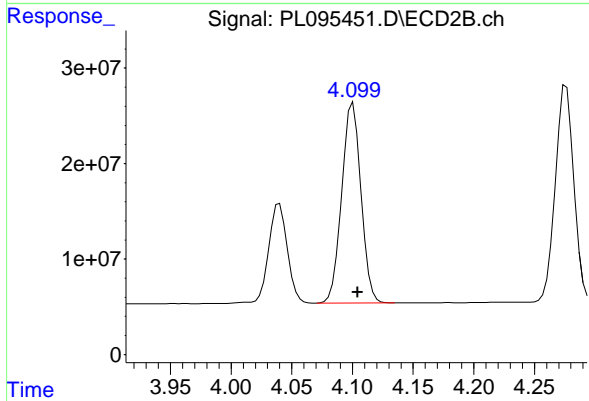
#3 gamma-BHC (Lindane)

R.T.: 3.747 min  
 Delta R.T.: -0.003 min  
 Response: 243628224  
 Conc: 55.39 ng/ml



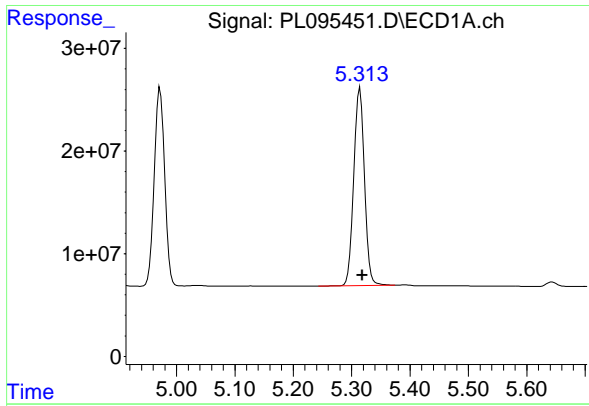
#4 Heptachlor

R.T.: 4.972 min  
 Delta R.T.: -0.004 min  
 Response: 238064984  
 Conc: 52.04 ng/ml



#4 Heptachlor

R.T.: 4.101 min  
 Delta R.T.: -0.004 min  
 Response: 231262867  
 Conc: 53.08 ng/ml



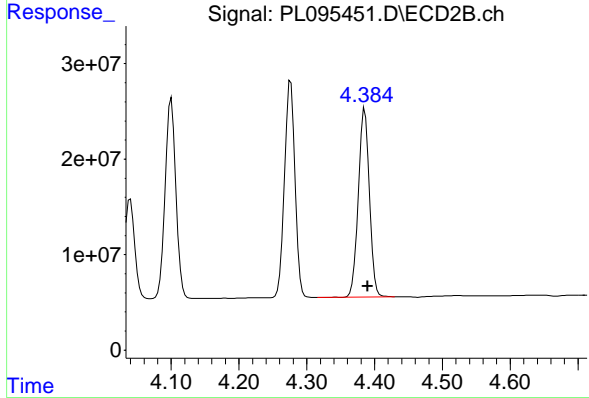
#5 Aldrin

R.T.: 5.314 min  
 Delta R.T.: -0.004 min  
 Response: 244242332  
 Conc: 53.18 ng/ml

Instrument : ECD\_L  
 Client Sample Id : PSTDCCC050

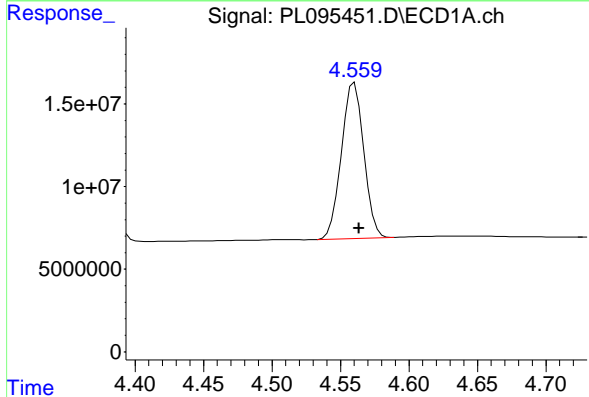
Manual Integrations  
 APPROVED

Reviewed By :Abdul Mirza 04/29/2025  
 Supervised By :mohammad ahmed 05/02/2025



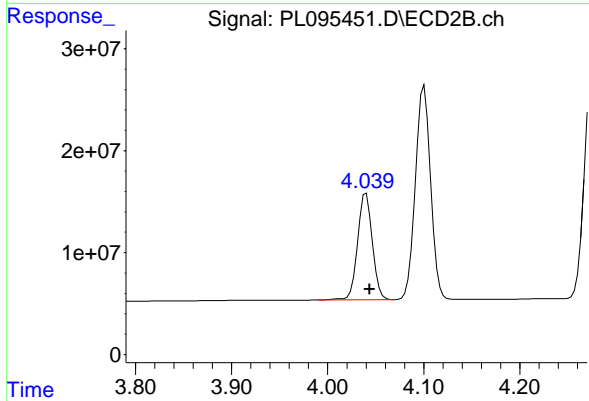
#5 Aldrin

R.T.: 4.386 min  
 Delta R.T.: -0.004 min  
 Response: 224573916  
 Conc: 54.57 ng/ml



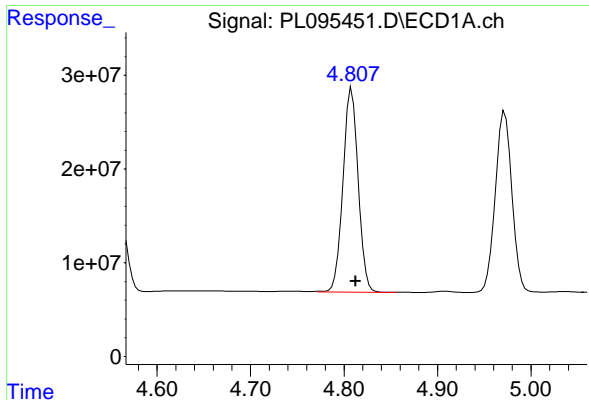
#6 beta-BHC

R.T.: 4.560 min  
 Delta R.T.: -0.003 min  
 Response: 107685963  
 Conc: 52.08 ng/ml



#6 beta-BHC

R.T.: 4.040 min  
 Delta R.T.: -0.004 min  
 Response: 111135903  
 Conc: 53.54 ng/ml



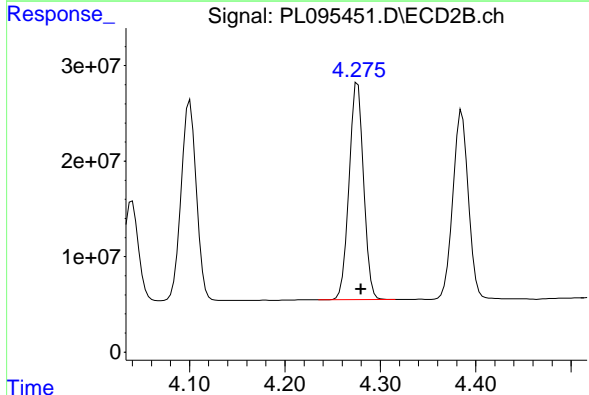
#7 delta-BHC

R.T.: 4.807 min  
 Delta R.T.: -0.006 min  
 Response: 245660591  
 Conc: 52.82 ng/ml

Instrument :  
 ECD\_L  
 ClientSampleId :  
 PSTDCCC050

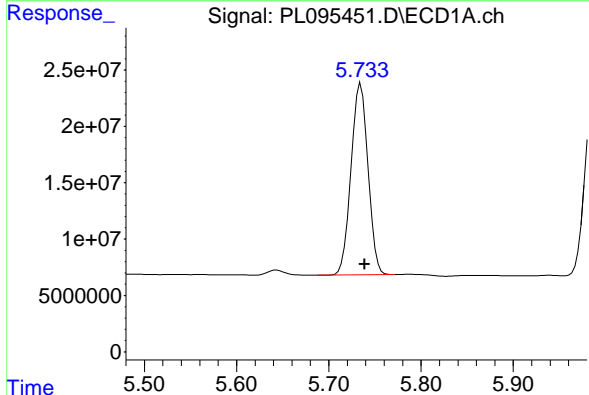
Manual Integrations  
 APPROVED

Reviewed By :Abdul Mirza 04/29/2025  
 Supervised By :mohammad ahmed 05/02/2025



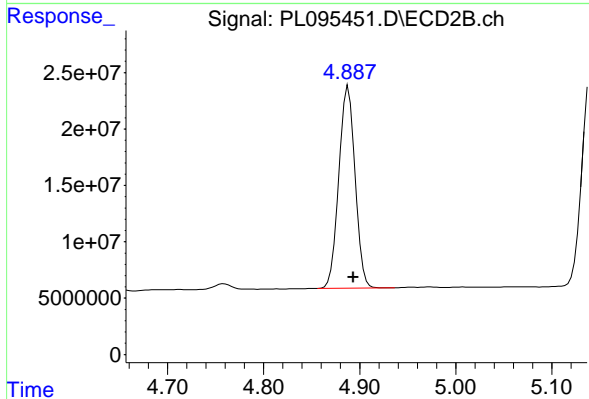
#7 delta-BHC

R.T.: 4.276 min  
 Delta R.T.: -0.004 min  
 Response: 242661100  
 Conc: 55.38 ng/ml



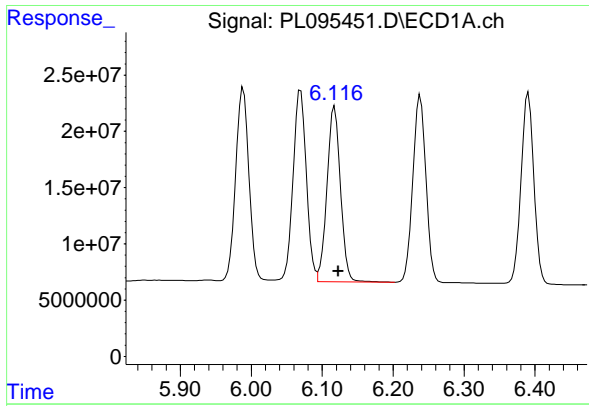
#8 Heptachlor epoxide

R.T.: 5.735 min  
 Delta R.T.: -0.004 min  
 Response: 216945339  
 Conc: 54.17 ng/ml



#8 Heptachlor epoxide

R.T.: 4.888 min  
 Delta R.T.: -0.005 min  
 Response: 208185381  
 Conc: 53.90 ng/ml



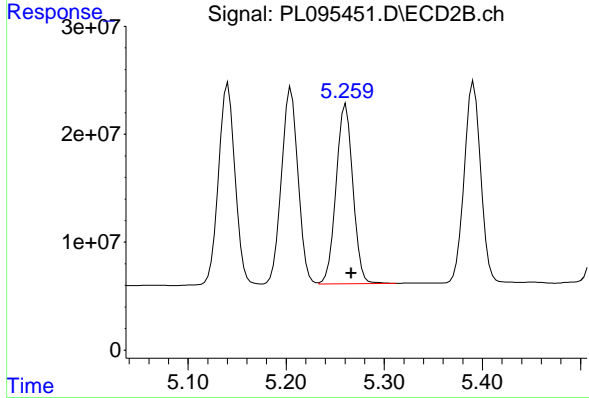
#9 Endosulfan I

R.T.: 6.117 min  
 Delta R.T.: -0.005 min  
 Response: 207386575  
 Conc: 54.61 ng/ml

Instrument : ECD\_L  
 ClientSampleId : PSTDCCC050

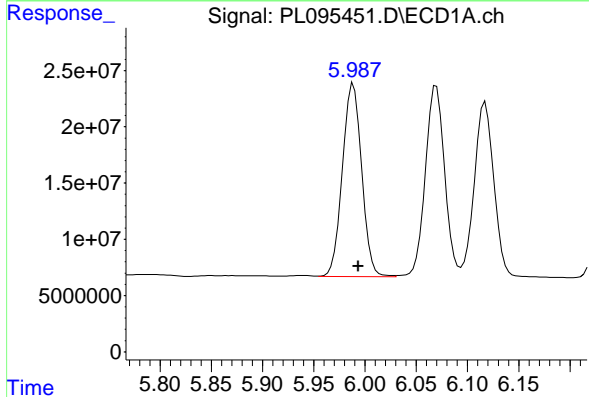
Manual Integrations  
 APPROVED

Reviewed By :Abdul Mirza 04/29/2025  
 Supervised By :mohammad ahmed 05/02/2025



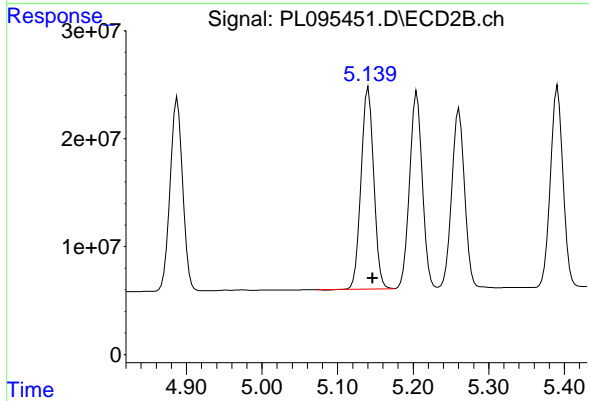
#9 Endosulfan I

R.T.: 5.261 min  
 Delta R.T.: -0.006 min  
 Response: 198179761  
 Conc: 54.14 ng/ml



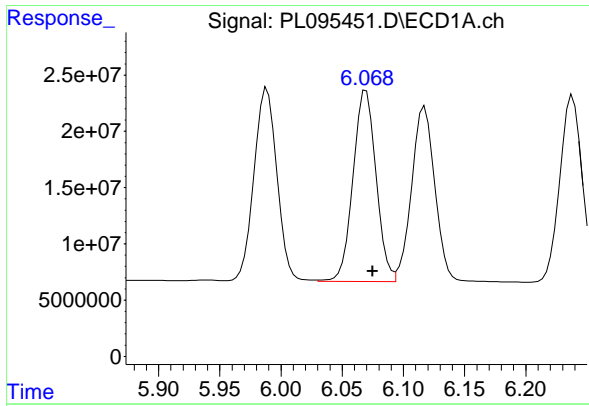
#10 gamma-Chlordane

R.T.: 5.989 min  
 Delta R.T.: -0.005 min  
 Response: 224047344  
 Conc: 54.92 ng/ml



#10 gamma-Chlordane

R.T.: 5.141 min  
 Delta R.T.: -0.006 min  
 Response: 217329585  
 Conc: 53.63 ng/ml



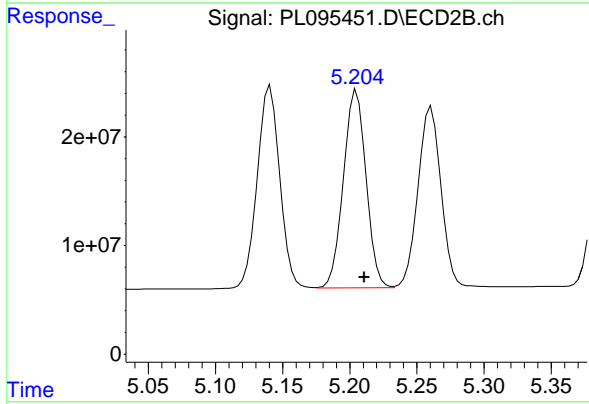
#11 alpha-Chlordane

R.T.: 6.070 min  
 Delta R.T.: -0.005 min  
 Response: 222705903  
 Conc: 54.77 ng/ml

Instrument : ECD\_L  
 Client Sample Id : PSTDCCC050

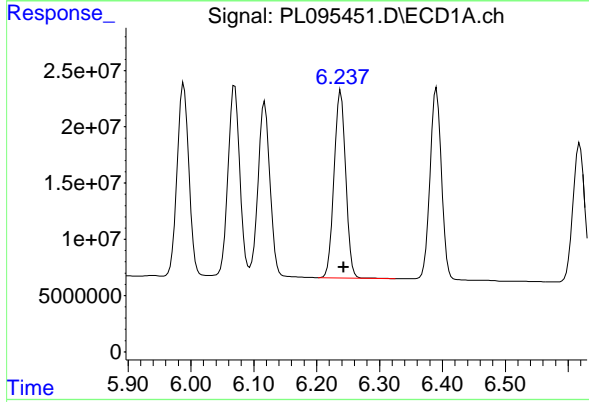
Manual Integrations  
 APPROVED

Reviewed By :Abdul Mirza 04/29/2025  
 Supervised By :mohammad ahmed 05/02/2025



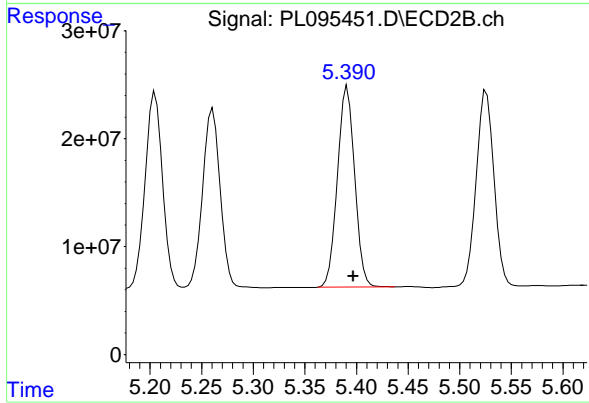
#11 alpha-Chlordane

R.T.: 5.205 min  
 Delta R.T.: -0.006 min  
 Response: 214280820  
 Conc: 53.83 ng/ml



#12 4,4'-DDE

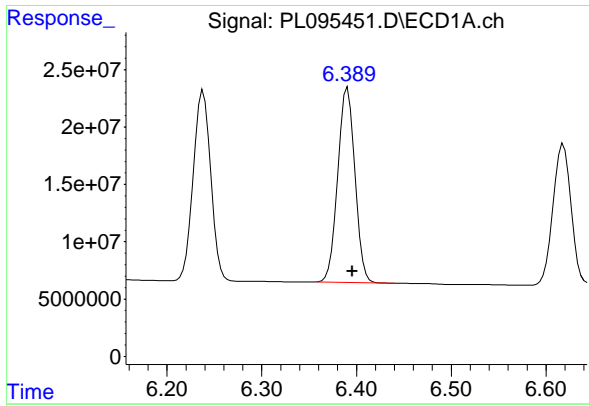
R.T.: 6.238 min  
 Delta R.T.: -0.005 min  
 Response: 214763519  
 Conc: 54.78 ng/ml



#12 4,4'-DDE

R.T.: 5.391 min  
 Delta R.T.: -0.006 min  
 Response: 216173386  
 Conc: 53.15 ng/ml





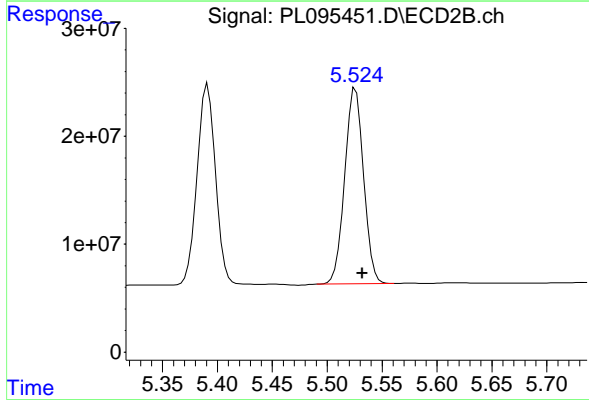
#13 Dieldrin

R.T.: 6.391 min  
 Delta R.T.: -0.005 min  
 Response: 213126675  
 Conc: 55.29 ng/ml

Instrument :  
 ECD\_L  
 Client Sample Id :  
 PSTDCCC050

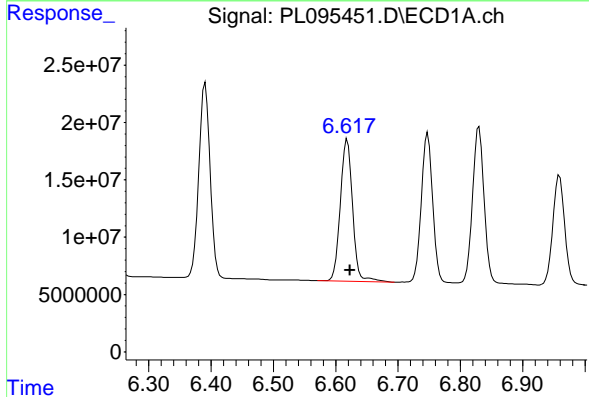
Manual Integrations  
 APPROVED

Reviewed By :Abdul Mirza 04/29/2025  
 Supervised By :mohammad ahmed 05/02/2025



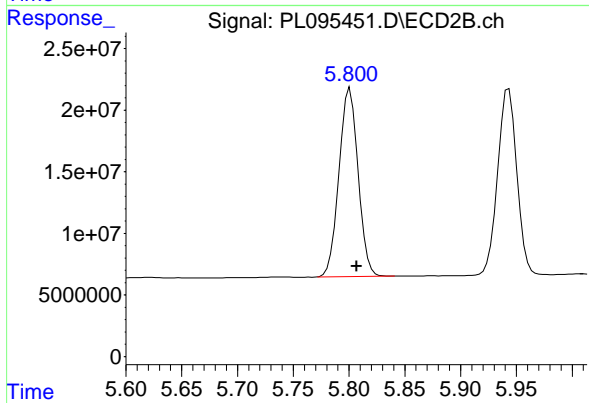
#13 Dieldrin

R.T.: 5.526 min  
 Delta R.T.: -0.006 min  
 Response: 216681513  
 Conc: 53.28 ng/ml



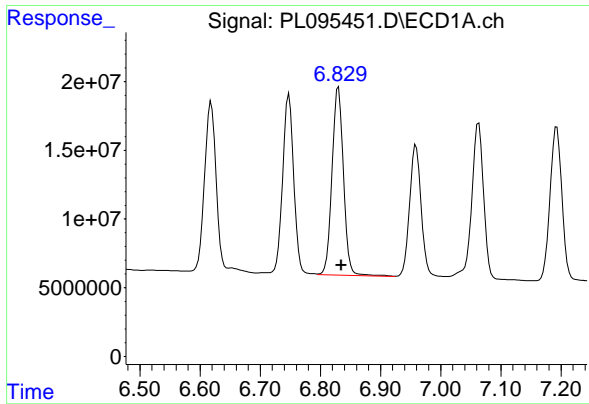
#14 Endrin

R.T.: 6.618 min  
 Delta R.T.: -0.005 min  
 Response: 169264300  
 Conc: 53.15 ng/ml



#14 Endrin

R.T.: 5.801 min  
 Delta R.T.: -0.006 min  
 Response: 181821231  
 Conc: 49.94 ng/ml



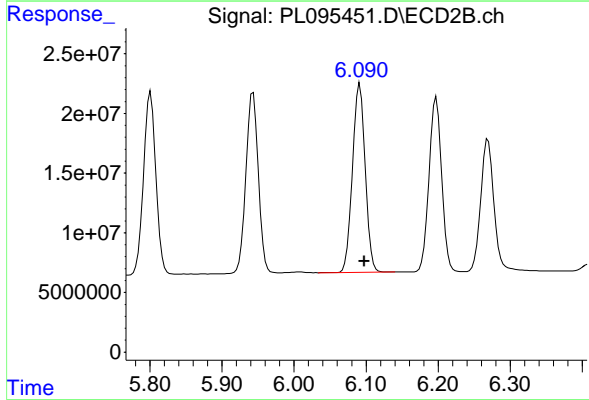
#15 Endosulfan II

R.T.: 6.830 min  
 Delta R.T.: -0.005 min  
 Response: 182005014  
 Conc: 57.02 ng/ml

Instrument :  
 ECD\_L  
 ClientSampleId :  
 PSTDCCC050

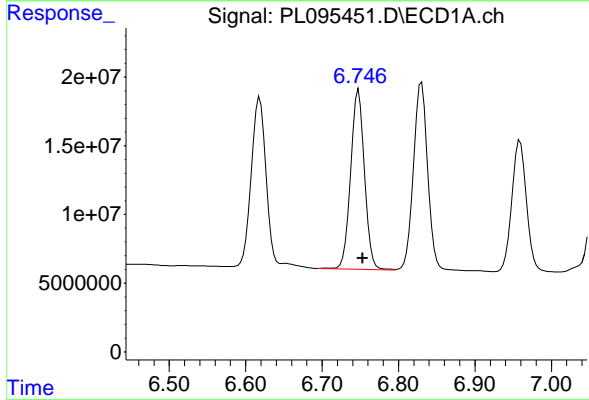
Manual Integrations  
 APPROVED

Reviewed By :Abdul Mirza 04/29/2025  
 Supervised By :mohammad ahmed 05/02/2025



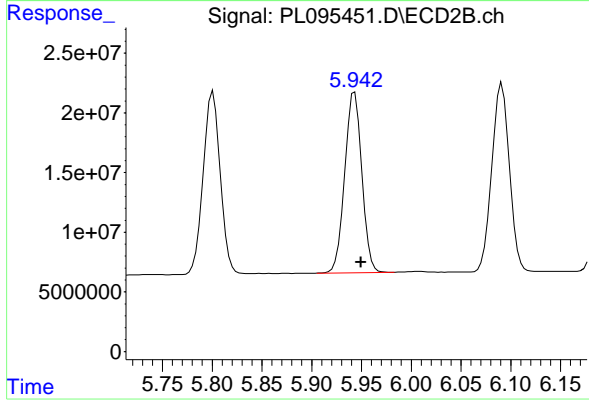
#15 Endosulfan II

R.T.: 6.091 min  
 Delta R.T.: -0.006 min  
 Response: 194304216  
 Conc: 54.11 ng/ml



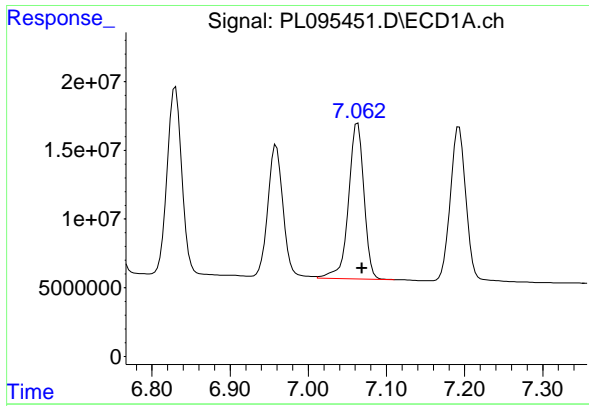
#16 4,4'-DDD

R.T.: 6.748 min  
 Delta R.T.: -0.005 min  
 Response: 166493713  
 Conc: 58.81 ng/ml



#16 4,4'-DDD

R.T.: 5.943 min  
 Delta R.T.: -0.006 min  
 Response: 181339682  
 Conc: 55.51 ng/ml



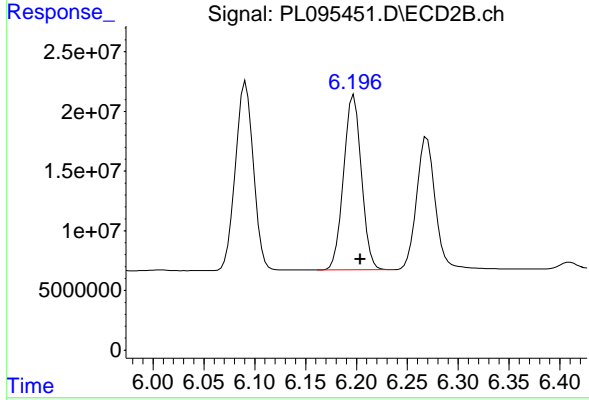
#17 4,4' -DDT

R.T.: 7.063 min  
 Delta R.T.: -0.005 min  
 Response: 154931281  
 Conc: 54.39 ng/ml

Instrument : ECD\_L  
 ClientSampleId : PSTDCCC050

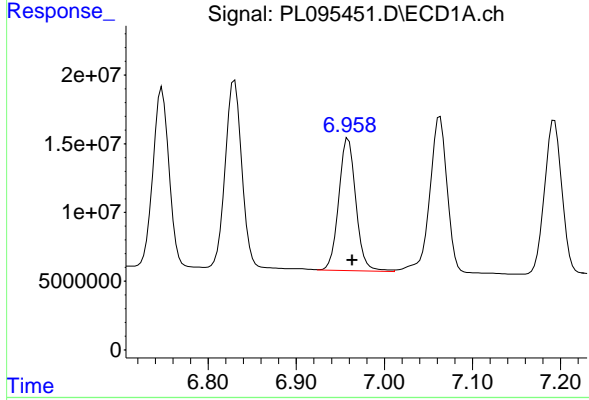
Manual Integrations  
 APPROVED

Reviewed By :Abdul Mirza 04/29/2025  
 Supervised By :mohammad ahmed 05/02/2025



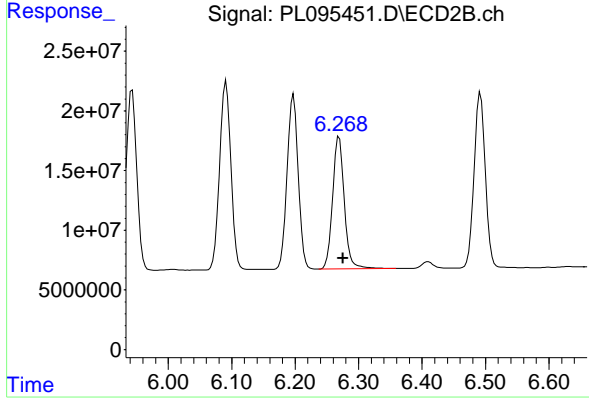
#17 4,4' -DDT

R.T.: 6.197 min  
 Delta R.T.: -0.006 min  
 Response: 178244505  
 Conc: 51.87 ng/ml



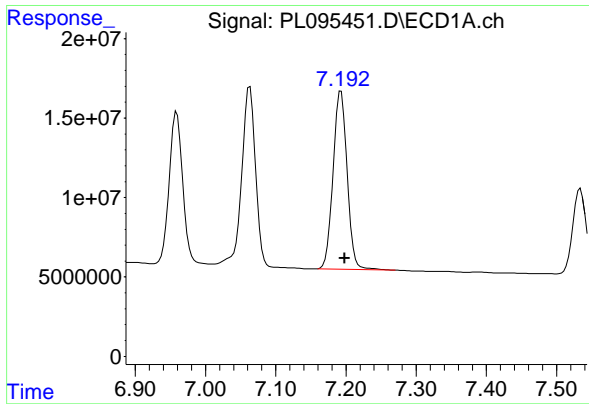
#18 Endrin aldehyde

R.T.: 6.959 min  
 Delta R.T.: -0.005 min  
 Response: 130220961  
 Conc: 56.11 ng/ml



#18 Endrin aldehyde

R.T.: 6.269 min  
 Delta R.T.: -0.006 min  
 Response: 142045996  
 Conc: 54.36 ng/ml



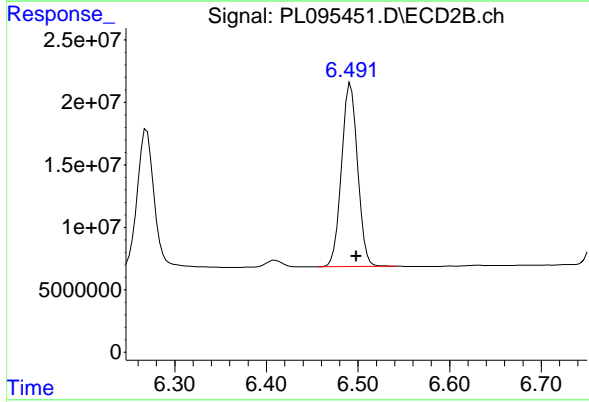
#19 Endosulfan Sulfate

R.T.: 7.193 min  
 Delta R.T.: -0.005 min  
 Response: 155653995  
 Conc: 55.56 ng/ml

Instrument : ECD\_L  
 Client Sample Id : PSTDCCC050

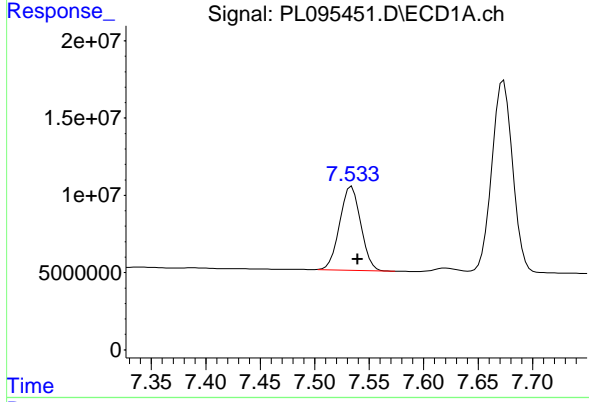
Manual Integrations  
 APPROVED

Reviewed By :Abdul Mirza 04/29/2025  
 Supervised By :mohammad ahmed 05/02/2025



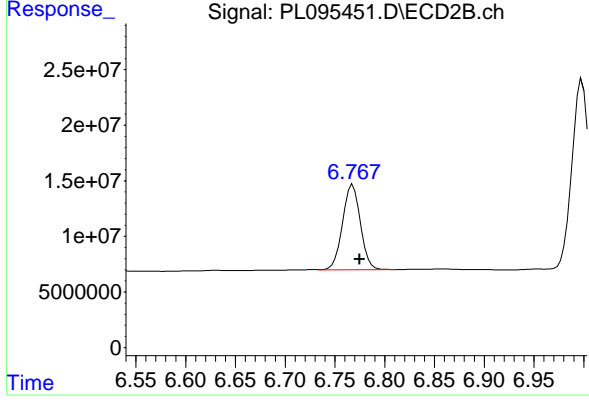
#19 Endosulfan Sulfate

R.T.: 6.492 min  
 Delta R.T.: -0.006 min  
 Response: 179822939  
 Conc: 54.20 ng/ml



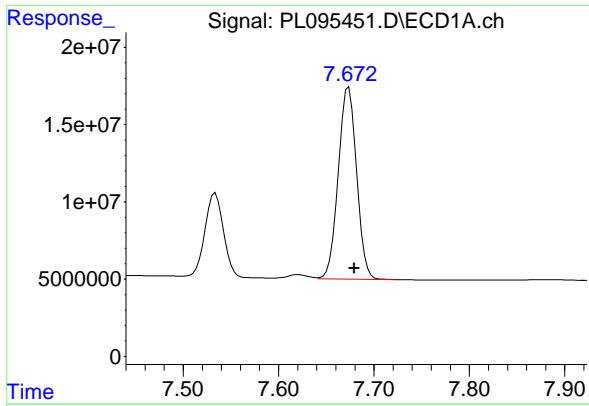
#20 Methoxychlor

R.T.: 7.534 min  
 Delta R.T.: -0.006 min  
 Response: 72562078  
 Conc: 52.01 ng/ml



#20 Methoxychlor

R.T.: 6.767 min  
 Delta R.T.: -0.008 min  
 Response: 96009994  
 Conc: 50.33 ng/ml m



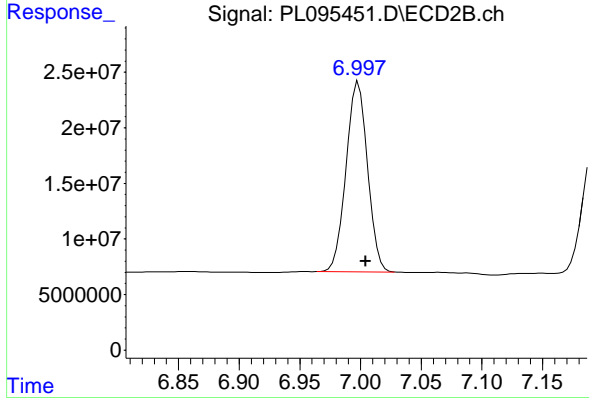
#21 Endrin ketone

R.T.: 7.674 min  
 Delta R.T.: -0.006 min  
 Response: 165613167  
 Conc: 58.09 ng/ml

Instrument :  
 ECD\_L  
 ClientSampleId :  
 PSTDCCC050

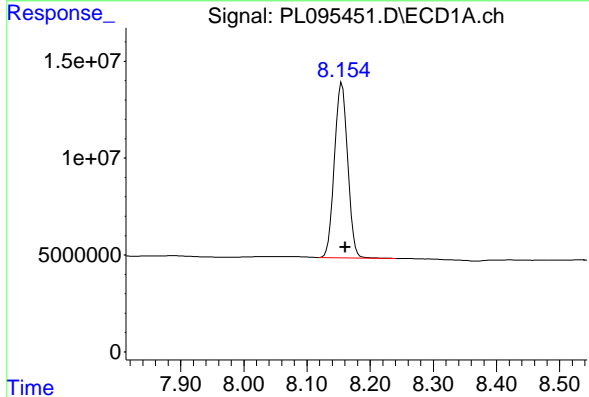
Manual Integrations  
 APPROVED

Reviewed By :Abdul Mirza 04/29/2025  
 Supervised By :mohammad ahmed 05/02/2025



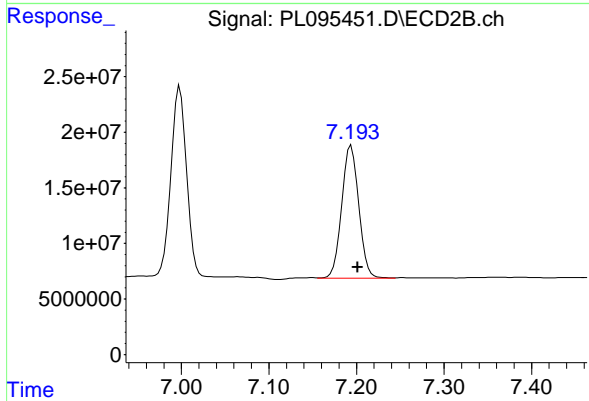
#21 Endrin ketone

R.T.: 6.997 min  
 Delta R.T.: -0.007 min  
 Response: 210933176  
 Conc: 59.90 ng/ml m



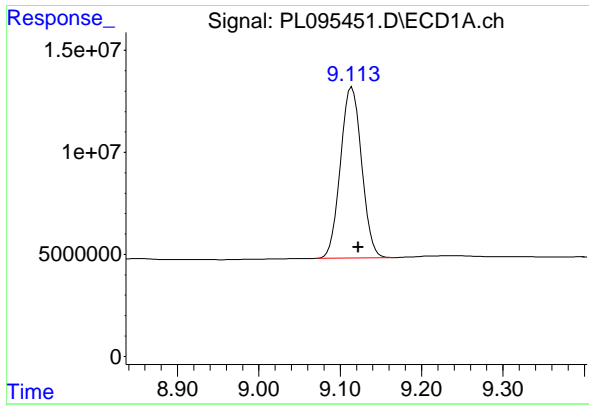
#22 Mirex

R.T.: 8.155 min  
 Delta R.T.: -0.005 min  
 Response: 131359260  
 Conc: 55.28 ng/ml



#22 Mirex

R.T.: 7.193 min  
 Delta R.T.: -0.009 min  
 Response: 161953522  
 Conc: 56.19 ng/ml m



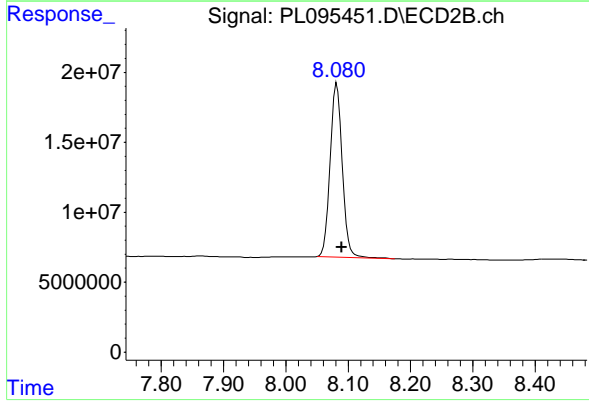
#28 Decachlorobiphenyl

R.T.: 9.114 min  
Delta R.T.: -0.008 min  
Response: 151812184  
Conc: 54.79 ng/ml

Instrument :  
ECD\_L  
ClientSampleId :  
PSTDCCC050

Manual Integrations  
APPROVED

Reviewed By :Abdul Mirza 04/29/2025  
Supervised By :mohammad ahmed 05/02/2025



#28 Decachlorobiphenyl

R.T.: 8.082 min  
Delta R.T.: -0.008 min  
Response: 167549987  
Conc: 56.62 ng/ml