

Data Path : Z:\pestpcbsrv\HPCHEM1\ECD_L\Data\PL050225\
 Data File : PL095474.D
 Signal(s) : Signal #1: ECD1A.ch Signal #2: ECD2B.ch
 Acq On : 29 Apr 2025 12:38
 Operator : AR\AJ
 Sample : PEM
 Misc :
 ALS Vial : 3 Sample Multiplier: 1

Instrument :
 ECD_L
ClientSampleId :
 PEM

Manual Integrations
APPROVED
 Reviewed By :Abdul Mirza 04/30/2025
 Supervised By :mohammad ahmed 05/02/2025

Integration File signal 1: autoint1.e
 Integration File signal 2: autoint2.e
 Quant Time: Apr 30 00:55:43 2025
 Quant Method : Z:\pestpcbsrv\HPCHEM1\ECD_L\methods\PL042325.M
 Quant Title : GC Extractables
 QLast Update : Wed Apr 23 16:23:18 2025
 Response via : Initial Calibration
 Integrator: ChemStation

Volume Inj. : 1 µl
 Signal #1 Phase : ZB-MR1 Signal #2 Phase: ZB-MR2
 Signal #1 Info : 30M x 0.32mm x0.5 Signal #2 Info : 30M x 0.32mm x0.25µm

Compound	RT#1	RT#2	Resp#1	Resp#2	ng/ml	ng/ml

System Monitoring Compounds						
1) SA Tetrachlo...	3.594	2.904	73847433	69558881	22.620	21.876
28) SA Decachlor...	9.118	8.082	70631713	72706466	25.491	24.569
Target Compounds						
2) A alpha-BHC	4.044	3.413	55114385	49020442	11.126	11.019
3) MA gamma-BHC...	4.375	3.747	53756465	47560250	11.355m	10.814
6) B beta-BHC	4.562	4.039	23240504	22470307	11.241	10.825m
14) MA Endrin	6.621	5.802	181.1E6	186.1E6	56.870	51.115
16) A 4,4'-DDD	6.751	5.944	20758534	19012875	7.333	5.820
17) MA 4,4'-DDT	7.066	6.198	321.1E6	357.8E6	112.732	104.137
18) B Endrin al...	6.960	6.270	2365095	3841643	1.019m	1.470m#
20) A Methoxychlor	7.537	6.769	359.7E6	428.6E6	257.826	224.726
21) B Endrin ke...	7.676	6.999	10695513	13075829	3.752	3.713

(f)=RT Delta > 1/2 Window (#)=Amounts differ by > 25% (m)=manual int.

Data Path : Z:\pestpcbsrv\HPCHEM1\ECD_L\Data\PL050225\
 Data File : PL095474.D
 Signal(s) : Signal #1: ECD1A.ch Signal #2: ECD2B.ch
 Acq On : 29 Apr 2025 12:38
 Operator : AR\AJ
 Sample : PEM
 Misc :
 ALS Vial : 3 Sample Multiplier: 1

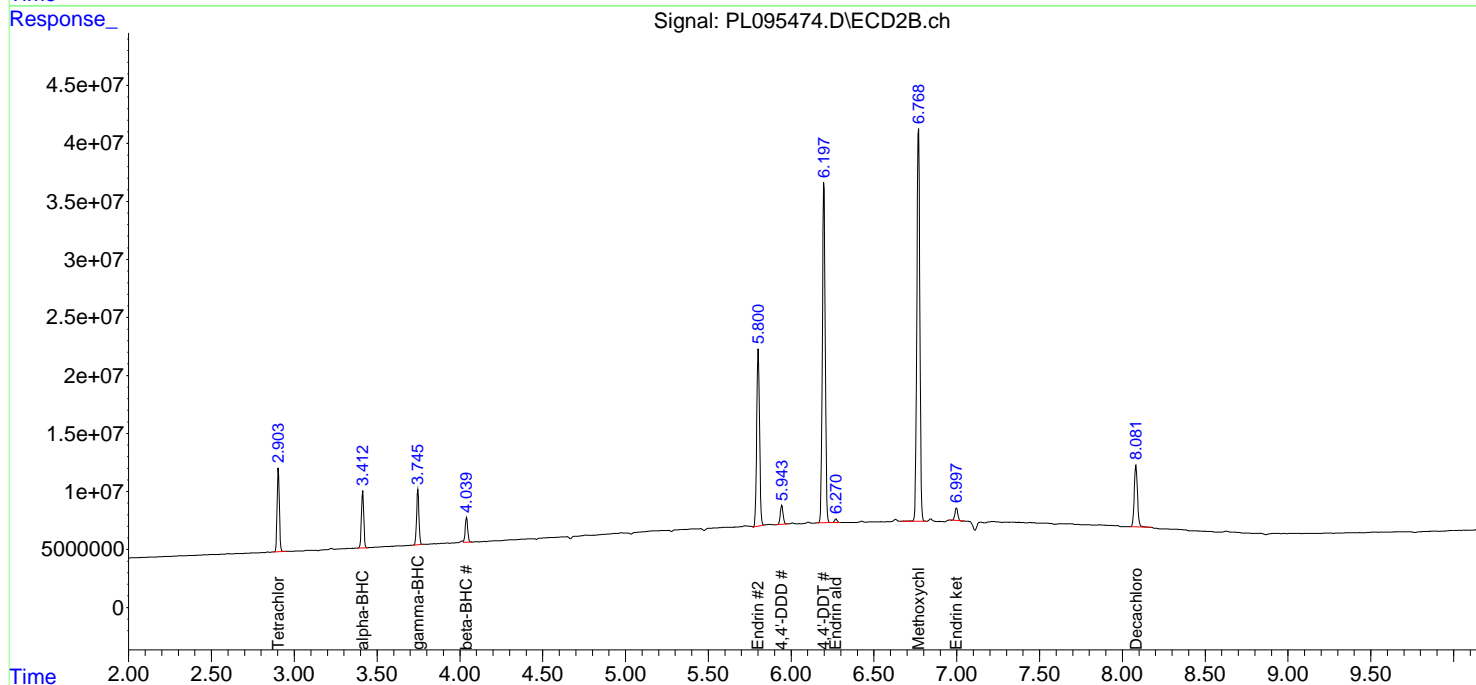
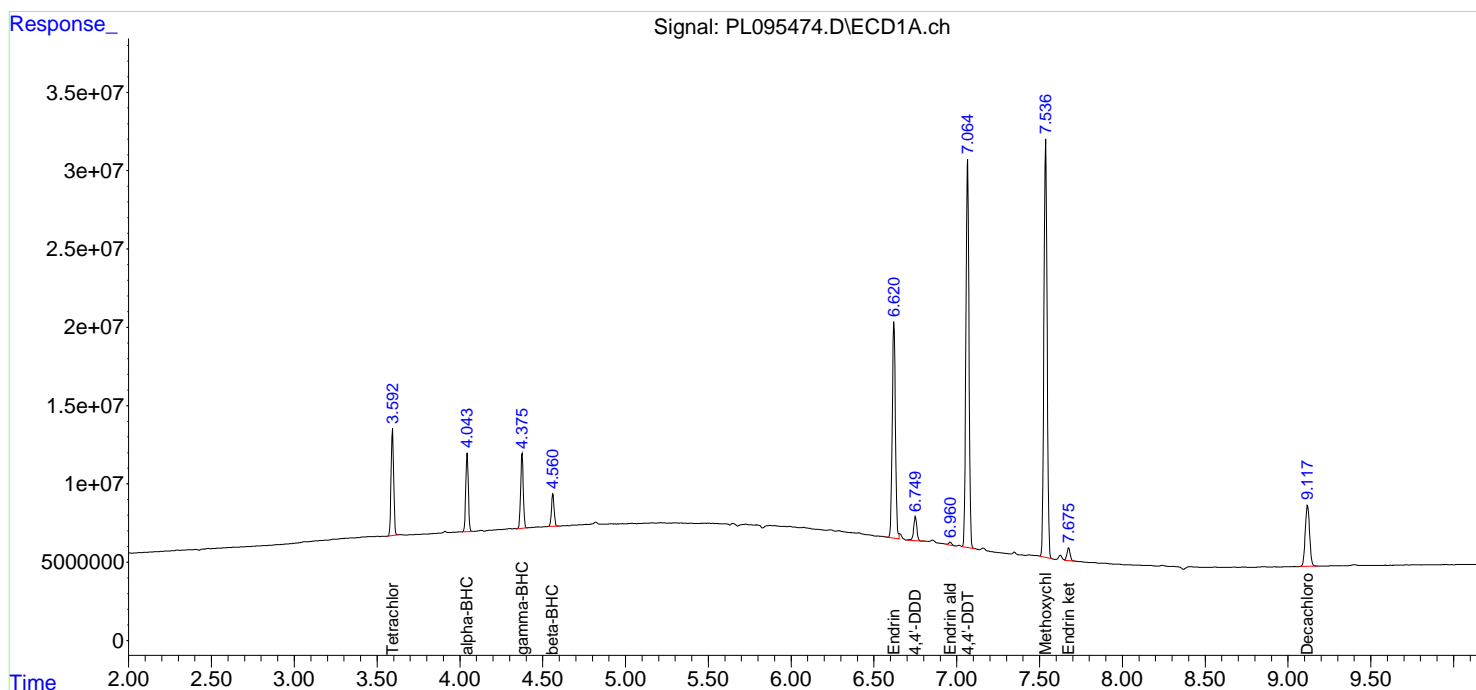
Instrument :
 ECD_L
ClientSampleId :
 PEM

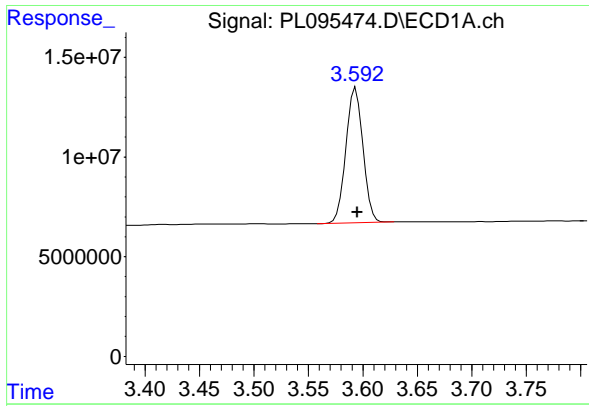
**Manual Integrations
 APPROVED**

Reviewed By :Abdul Mirza 04/30/2025
 Supervised By :mohammad ahmed 05/02/2025

Integration File signal 1: autoint1.e
 Integration File signal 2: autoint2.e
 Quant Time: Apr 30 00:55:43 2025
 Quant Method : Z:\pestpcbsrv\HPCHEM1\ECD_L\methods\PL042325.M
 Quant Title : GC Extractables
 QLast Update : Wed Apr 23 16:23:18 2025
 Response via : Initial Calibration
 Integrator: ChemStation

Volume Inj. : 1 µl
 Signal #1 Phase : ZB-MR1 Signal #2 Phase: ZB-MR2
 Signal #1 Info : 30M x 0.32mm x0.5 Signal #2 Info : 30M x 0.32mm x0.25µm





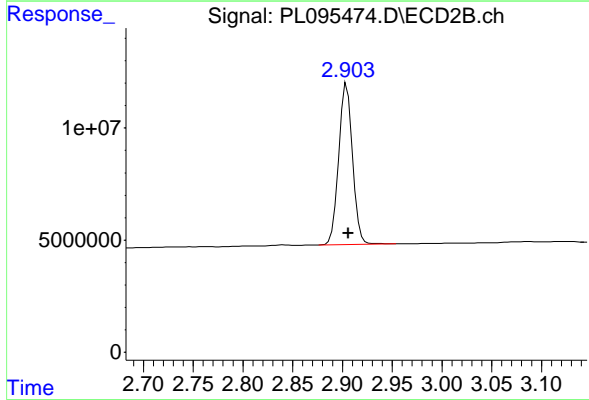
#1 Tetrachloro-m-xylene

R.T.: 3.594 min
 Delta R.T.: -0.002 min
 Response: 73847433
 Conc: 22.62 ng/ml

Instrument :
 ECD_L
 ClientSampleId :
 PEM

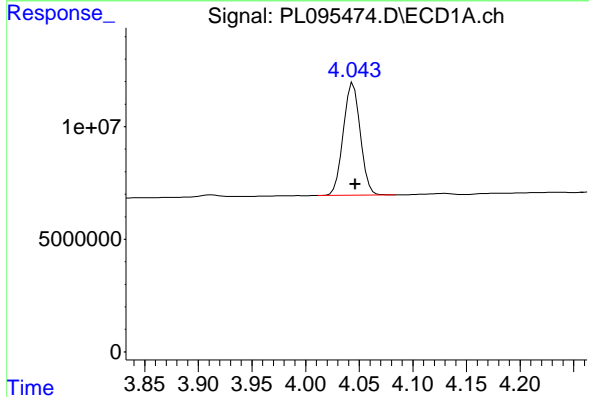
Manual Integrations
 APPROVED

Reviewed By :Abdul Mirza 04/30/2025
 Supervised By :mohammad ahmed 05/02/2025



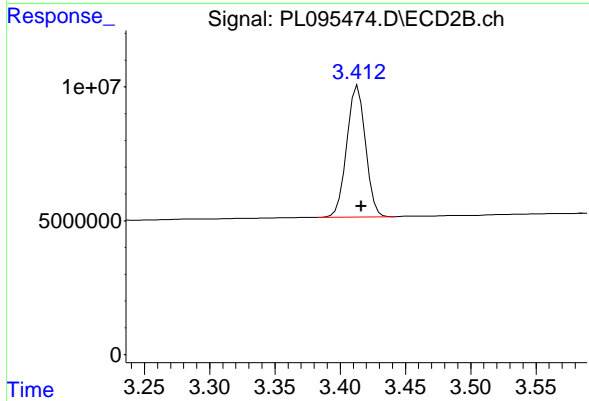
#1 Tetrachloro-m-xylene

R.T.: 2.904 min
 Delta R.T.: -0.001 min
 Response: 69558881
 Conc: 21.88 ng/ml



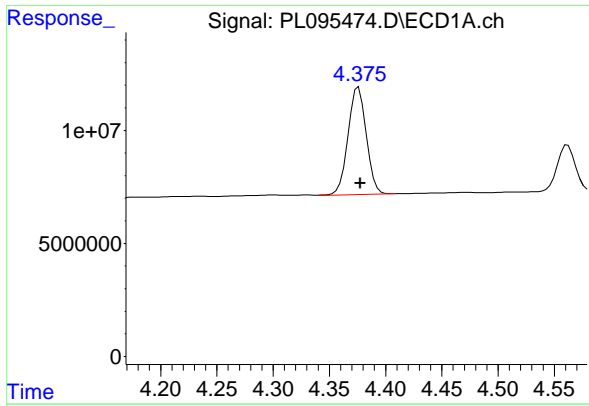
#2 alpha-BHC

R.T.: 4.044 min
 Delta R.T.: -0.002 min
 Response: 55114385
 Conc: 11.13 ng/ml



#2 alpha-BHC

R.T.: 3.413 min
 Delta R.T.: -0.003 min
 Response: 49020442
 Conc: 11.02 ng/ml



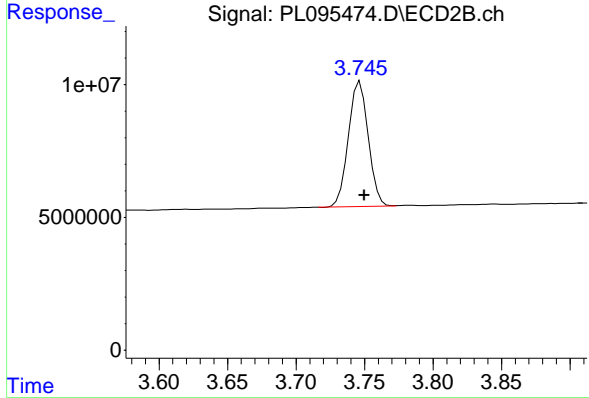
#3 gamma-BHC (Lindane)

R.T.: 4.375 min
 Delta R.T.: -0.003 min
 Response: 53756465
 Conc: 11.36 ng/ml

Instrument :
 ECD_L
 ClientSampleId :
 PEM

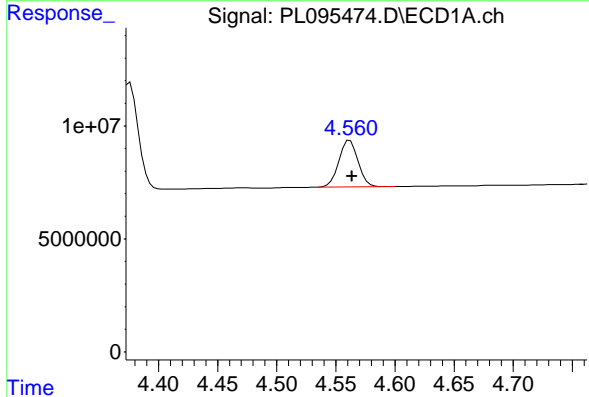
Manual Integrations
 APPROVED

Reviewed By :Abdul Mirza 04/30/2025
 Supervised By :mohammad ahmed 05/02/2025



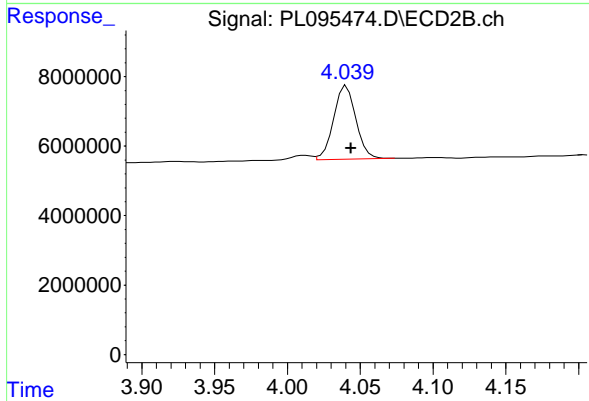
#3 gamma-BHC (Lindane)

R.T.: 3.747 min
 Delta R.T.: -0.003 min
 Response: 47560250
 Conc: 10.81 ng/ml



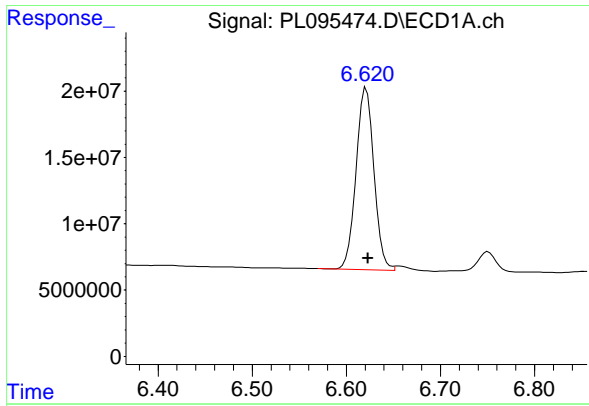
#6 beta-BHC

R.T.: 4.562 min
 Delta R.T.: -0.002 min
 Response: 23240504
 Conc: 11.24 ng/ml



#6 beta-BHC

R.T.: 4.039 min
 Delta R.T.: -0.005 min
 Response: 22470307
 Conc: 10.82 ng/ml m



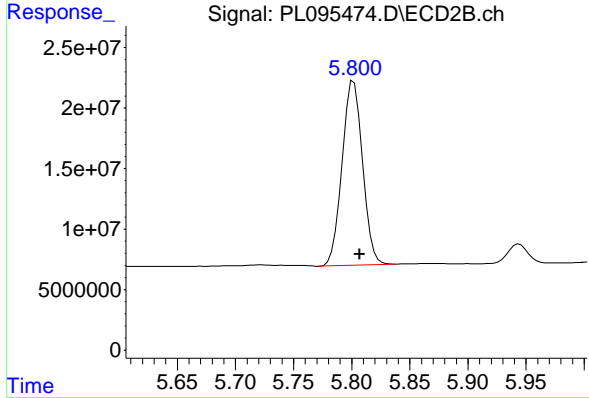
#14 Endrin

R.T.: 6.621 min
 Delta R.T.: -0.002 min
 Response: 181116157
 Conc: 56.87 ng/ml

Instrument :
 ECD_L
 ClientSampleId :
 PEM

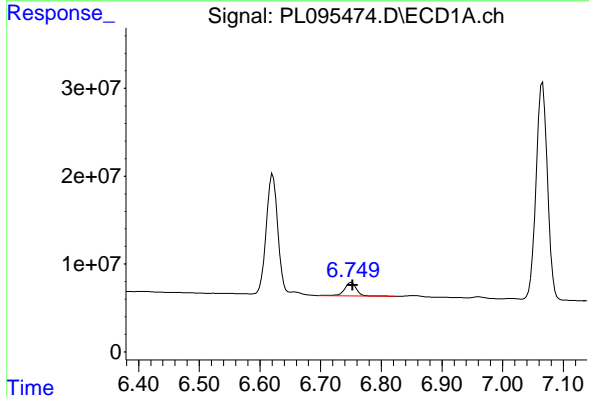
Manual Integrations
 APPROVED

Reviewed By :Abdul Mirza 04/30/2025
 Supervised By :mohammad ahmed 05/02/2025



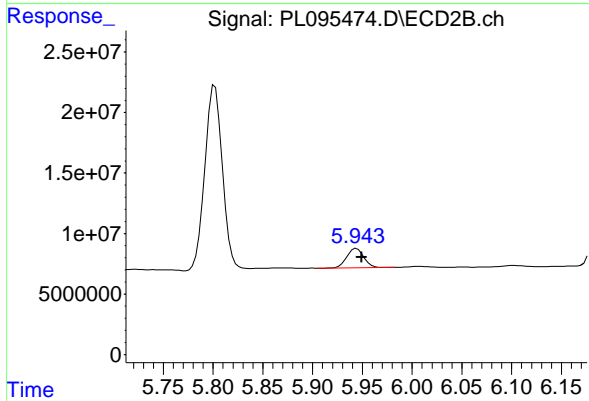
#14 Endrin

R.T.: 5.802 min
 Delta R.T.: -0.005 min
 Response: 186094708
 Conc: 51.11 ng/ml



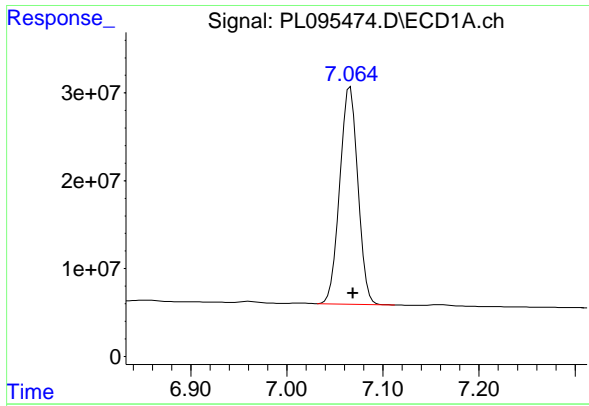
#16 4,4'-DDD

R.T.: 6.751 min
 Delta R.T.: -0.002 min
 Response: 20758534
 Conc: 7.33 ng/ml



#16 4,4'-DDD

R.T.: 5.944 min
 Delta R.T.: -0.005 min
 Response: 19012875
 Conc: 5.82 ng/ml



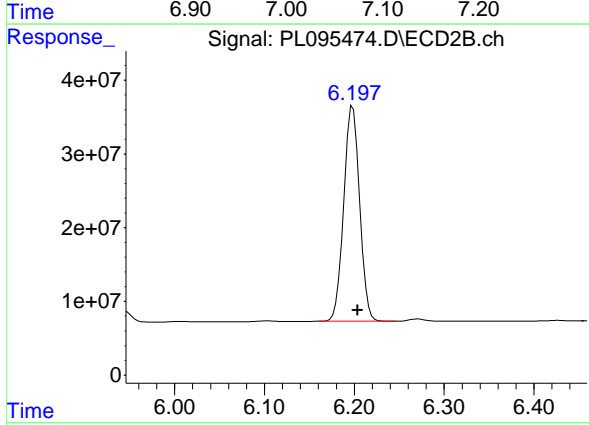
#17 4,4' -DDT

R.T.: 7.066 min
 Delta R.T.: -0.003 min
 Response: 321126306
 Conc: 112.73 ng/ml

Instrument :
 ECD_L
 ClientSampleId :
 PEM

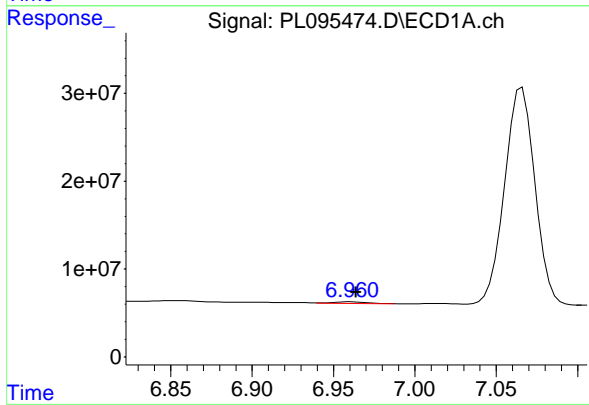
Manual Integrations
 APPROVED

Reviewed By :Abdul Mirza 04/30/2025
 Supervised By :mohammad ahmed 05/02/2025



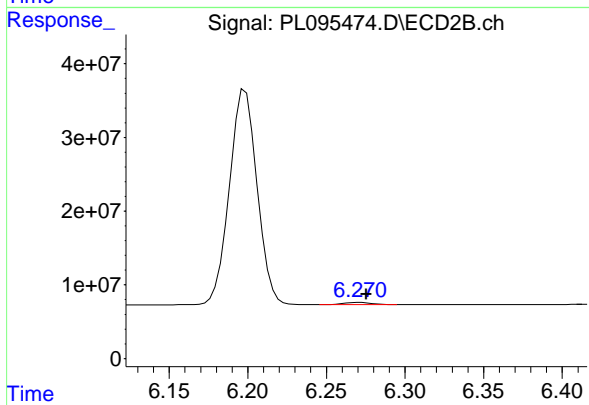
#17 4,4' -DDT

R.T.: 6.198 min
 Delta R.T.: -0.005 min
 Response: 357832572
 Conc: 104.14 ng/ml



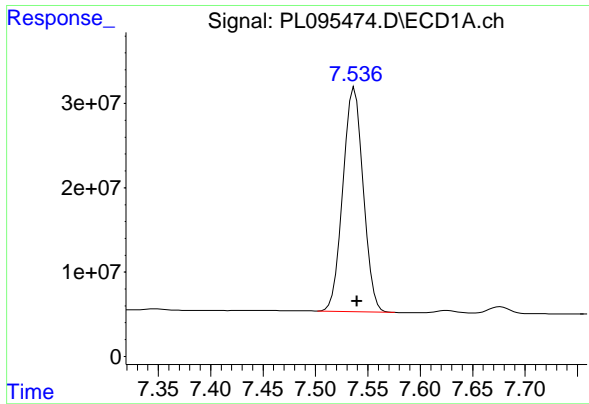
#18 Endrin aldehyde

R.T.: 6.960 min
 Delta R.T.: -0.004 min
 Response: 2365095
 Conc: 1.02 ng/ml m



#18 Endrin aldehyde

R.T.: 6.270 min
 Delta R.T.: -0.006 min
 Response: 3841643
 Conc: 1.47 ng/ml m



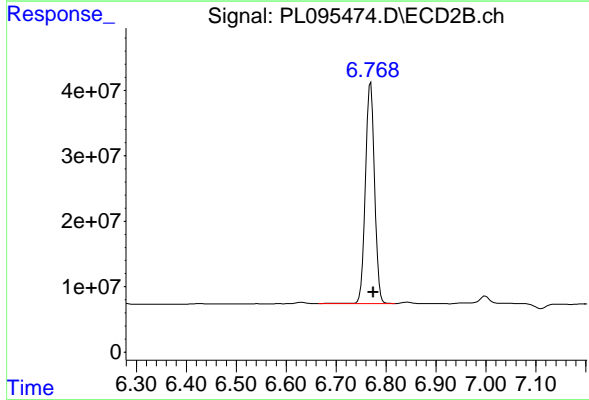
#20 Methoxychlor

R.T.: 7.537 min
 Delta R.T.: -0.002 min
 Response: 359700476
 Conc: 257.83 ng/ml

Instrument :
 ECD_L
 ClientSampleId :
 PEM

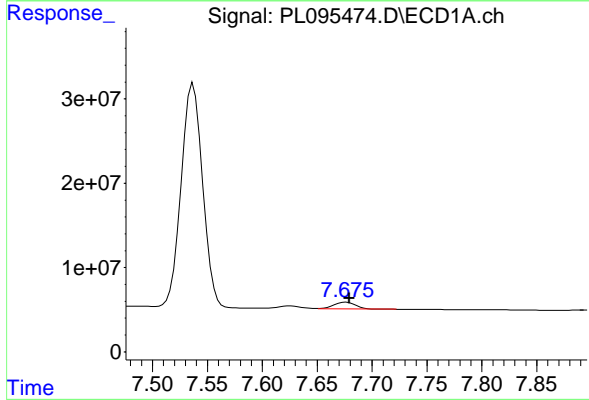
Manual Integrations
 APPROVED

Reviewed By :Abdul Mirza 04/30/2025
 Supervised By :mohammad ahmed 05/02/2025



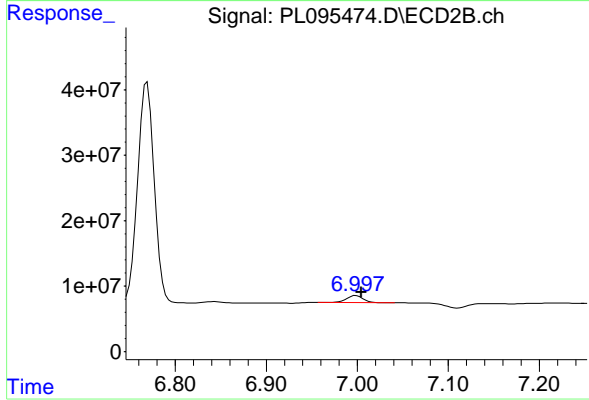
#20 Methoxychlor

R.T.: 6.769 min
 Delta R.T.: -0.006 min
 Response: 428648212
 Conc: 224.73 ng/ml



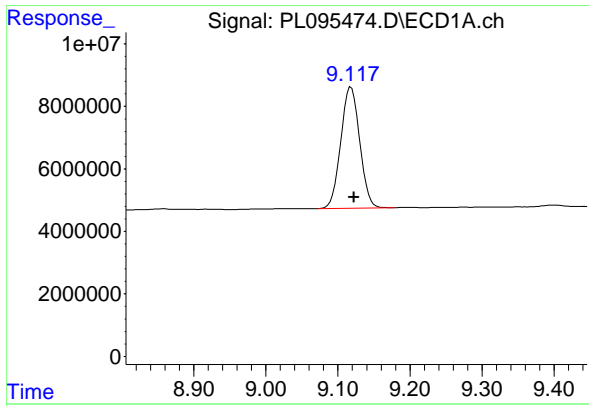
#21 Endrin ketone

R.T.: 7.676 min
 Delta R.T.: -0.003 min
 Response: 10695513
 Conc: 3.75 ng/ml



#21 Endrin ketone

R.T.: 6.999 min
 Delta R.T.: -0.006 min
 Response: 13075829
 Conc: 3.71 ng/ml



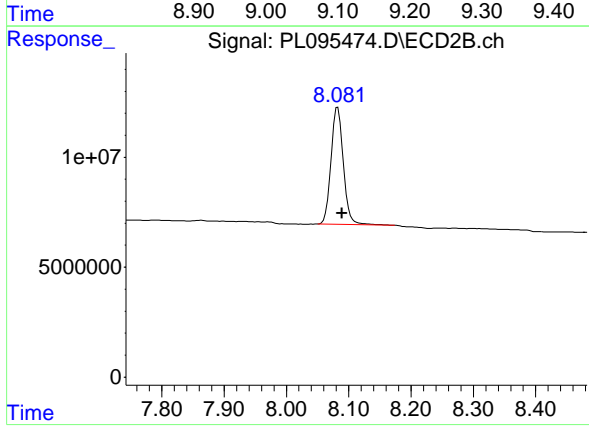
#28 Decachlorobiphenyl

R.T.: 9.118 min
 Delta R.T.: -0.004 min
 Response: 70631713
 Conc: 25.49 ng/ml

Instrument :
 ECD_L
 ClientSampleId :
 PEM

Manual Integrations
 APPROVED

Reviewed By :Abdul Mirza 04/30/2025
 Supervised By :mohammad ahmed 05/02/2025



#28 Decachlorobiphenyl

R.T.: 8.082 min
 Delta R.T.: -0.007 min
 Response: 72706466
 Conc: 24.57 ng/ml