

Data Path : Z:\pestpcbsrv\HPCHEM1\ECD\_L\Data\PL050225\  
 Data File : PL095475.D  
 Signal(s) : Signal #1: ECD1A.ch Signal #2: ECD2B.ch  
 Acq On : 29 Apr 2025 13:07  
 Operator : AR\AJ  
 Sample : PSTDCCC050  
 Misc :  
 ALS Vial : 4 Sample Multiplier: 1

**Instrument :**  
 ECD\_L  
**ClientSampleId :**  
 PSTDCCC050

**Manual Integrations**  
**APPROVED**  
 Reviewed By :Abdul Mirza 04/30/2025  
 Supervised By :mohammad ahmed 05/02/2025

Integration File signal 1: autoint1.e  
 Integration File signal 2: autoint2.e  
 Quant Time: Apr 30 00:55:51 2025  
 Quant Method : Z:\pestpcbsrv\HPCHEM1\ECD\_L\methods\PL042325.M  
 Quant Title : GC Extractables  
 QLast Update : Wed Apr 23 16:23:18 2025  
 Response via : Initial Calibration  
 Integrator: ChemStation

Volume Inj. : 1 µl  
 Signal #1 Phase : ZB-MR2 Signal #2 Phase: ZB-MR2  
 Signal #1 Info : 30M x 0.32mm x0.5 Signal #2 Info : 30M x 0.32mm x0.25µm

Compound	RT#1	RT#2	Resp#1	Resp#2	ng/ml	ng/ml
-----						
System Monitoring Compounds						
1) SA Tetrachlo...	3.594	2.903	168.8E6	156.2E6	51.720	49.112
28) SA Decachlor...	9.118	8.081	149.3E6	158.5E6	53.875	53.558
Target Compounds						
2) A alpha-BHC	4.045	3.412	260.9E6	227.6E6	52.676	51.167
3) MA gamma-BHC...	4.375	3.746	249.1E6	220.4E6	52.617m	50.117
4) MA Heptachlor	4.974	4.100	234.4E6	207.1E6	51.249	47.534
5) MB Aldrin	5.316	4.385	238.9E6	202.2E6	52.016	49.136
6) B beta-BHC	4.562	4.039	107.2E6	101.0E6	51.835	48.655
7) B delta-BHC	4.809	4.275	241.7E6	218.8E6	51.969m	49.935
8) B Heptachlo...	5.736	4.887	213.7E6	189.0E6	53.353	48.918
9) A Endosulfan I	6.119	5.260	204.0E6	182.5E6	53.721	49.844
10) B gamma-Chl...	5.991	5.138	220.5E6	198.2E6	54.040	48.903m
11) B alpha-Chl...	6.071	5.204	218.3E6	195.1E6	53.692	49.010
12) B 4,4'-DDE	6.240	5.390	211.9E6	196.9E6	54.050	48.406
13) MA Dieldrin	6.393	5.525	212.1E6	197.5E6	55.029	48.570
14) MA Endrin	6.620	5.800	160.4E6	161.8E6	50.372	44.445
15) B Endosulfa...	6.830	6.090	178.5E6	178.2E6	55.919m	49.628
16) A 4,4'-DDD	6.750	5.942	168.8E6	168.3E6	59.623	51.514
17) MA 4,4'-DDT	7.065	6.196	149.7E6	157.1E6	52.564	45.712
18) B Endrin al...	6.961	6.269	129.8E6	130.4E6	55.933	49.913
19) B Endosulfa...	7.194	6.492	154.4E6	166.9E6	55.117	50.310
20) A Methoxychlor	7.536	6.767	68941613	84372136	49.416	44.233
21) B Endrin ke...	7.676	6.997	168.7E6	201.1E6	59.188	57.110
22) Mirex	8.157	7.192	129.0E6	151.6E6	54.296	52.586m

(f)=RT Delta > 1/2 Window (#)=Amounts differ by > 25% (m)=manual int.

Data Path : Z:\pestpcbsrv\HPCHEM1\ECD\_L\Data\PL050225\  
 Data File : PL095475.D  
 Signal(s) : Signal #1: ECD1A.ch Signal #2: ECD2B.ch  
 Acq On : 29 Apr 2025 13:07  
 Operator : AR\AJ  
 Sample : PSTDCCC050  
 Misc :  
 ALS Vial : 4 Sample Multiplier: 1

Instrument :

ECD\_L

ClientSampleId :

PSTDCCC050

Manual Integrations

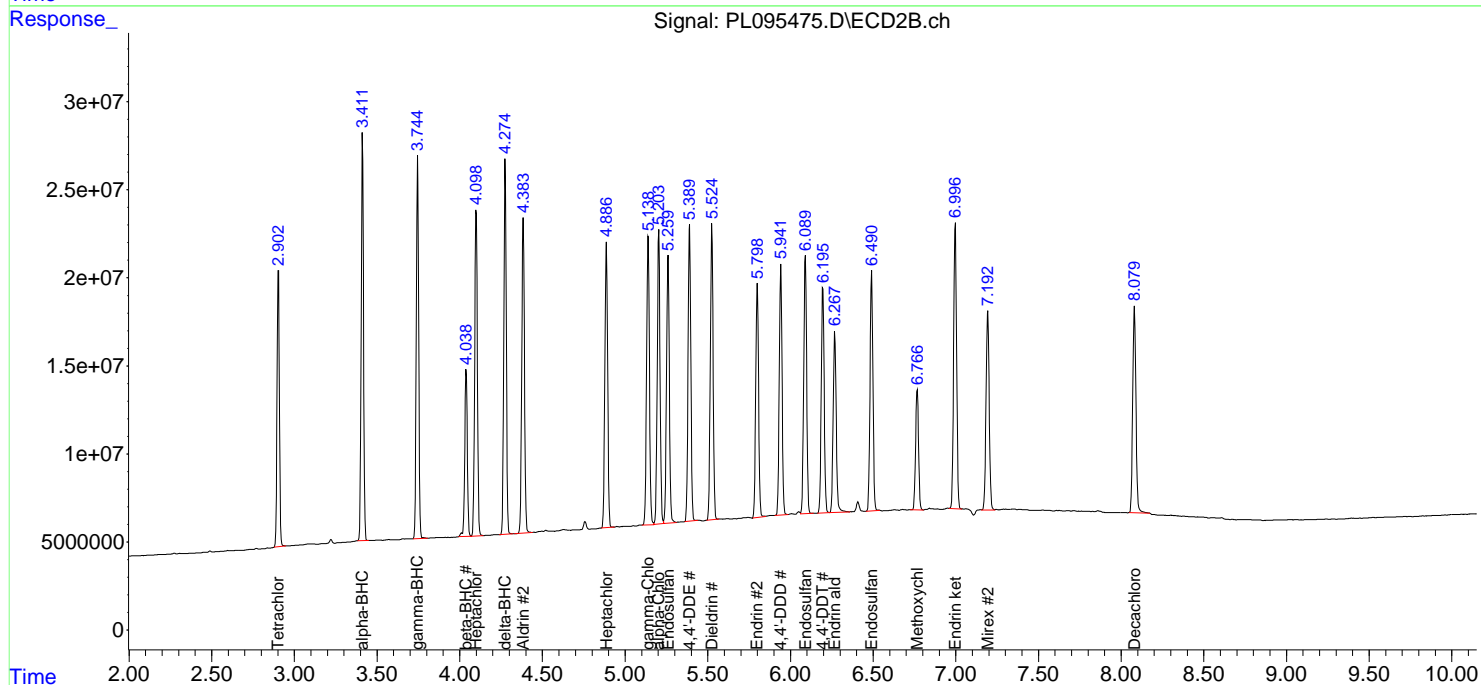
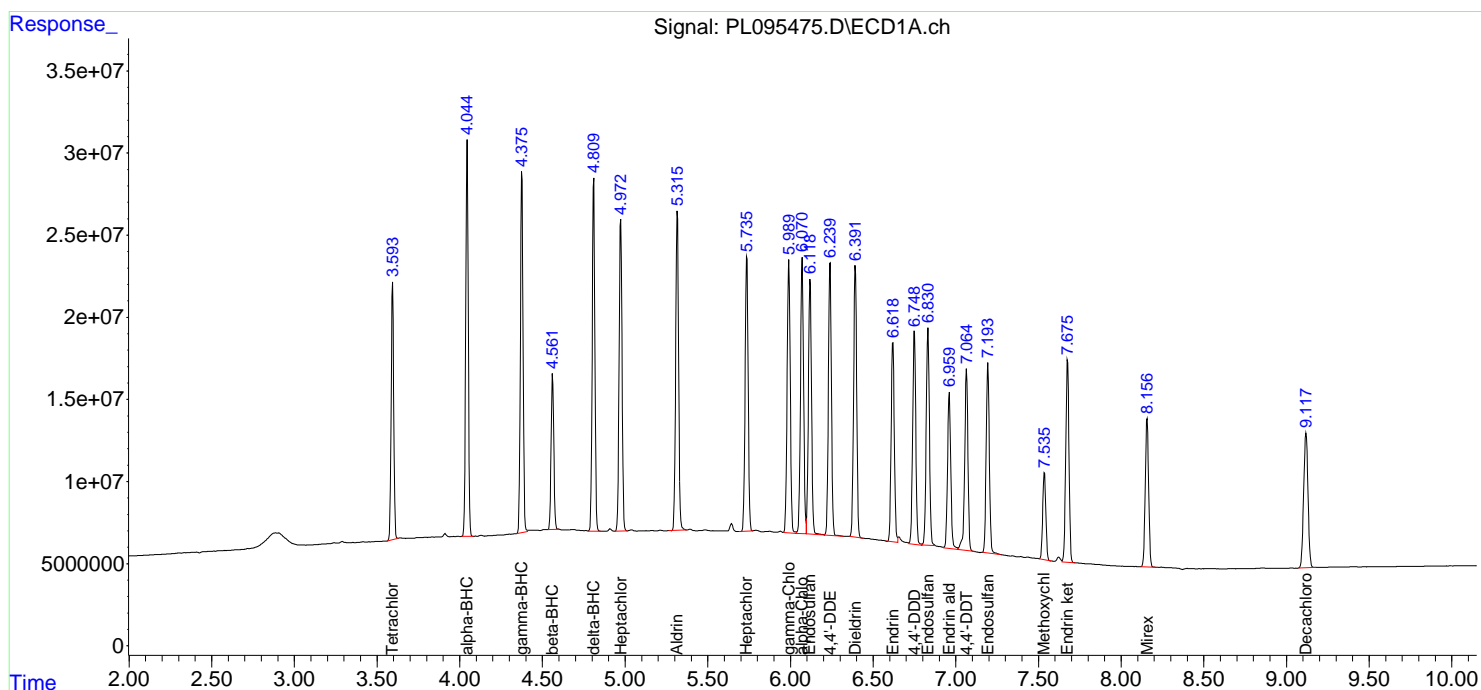
APPROVED

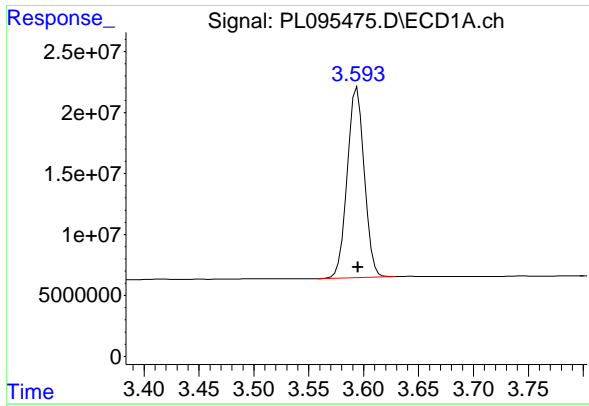
Reviewed By :Abdul Mirza 04/30/2025

Supervised By :mohammad ahmed 05/02/2025

Integration File signal 1: autoint1.e  
 Integration File signal 2: autoint2.e  
 Quant Time: Apr 30 00:55:51 2025  
 Quant Method : Z:\pestpcbsrv\HPCHEM1\ECD\_L\methods\PL042325.M  
 Quant Title : GC Extractables  
 QLast Update : Wed Apr 23 16:23:18 2025  
 Response via : Initial Calibration  
 Integrator: ChemStation

Volume Inj. : 1 µl  
 Signal #1 Phase : ZB-MR1 Signal #2 Phase: ZB-MR2  
 Signal #1 Info : 30M x 0.32mm x0.5 Signal #2 Info : 30M x 0.32mm x0.25µm





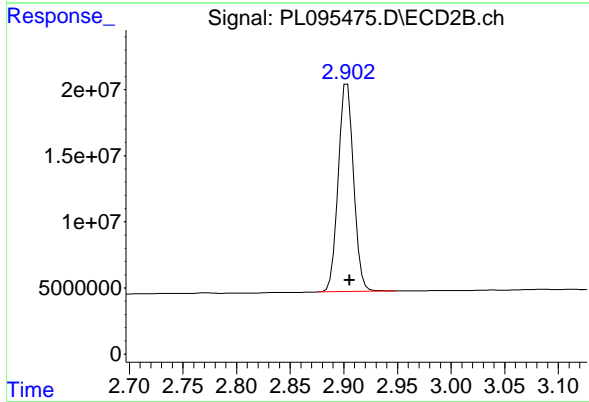
#1 Tetrachloro-m-xylene

R.T.: 3.594 min  
 Delta R.T.: 0.000 min  
 Response: 168849799  
 Conc: 51.72 ng/ml

Instrument :  
 ECD\_L  
 ClientSampleId :  
 PSTDCCC050

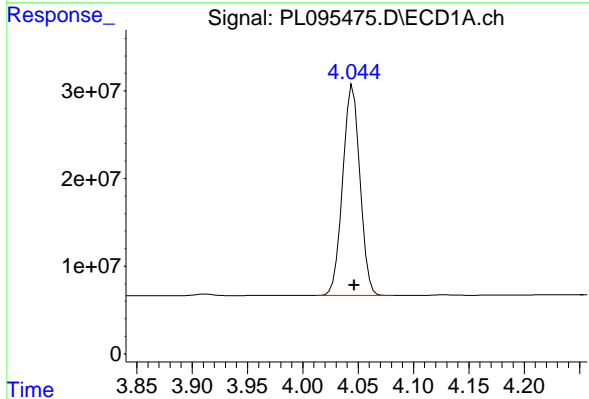
Manual Integrations  
 APPROVED

Reviewed By :Abdul Mirza 04/30/2025  
 Supervised By :mohammad ahmed 05/02/2025



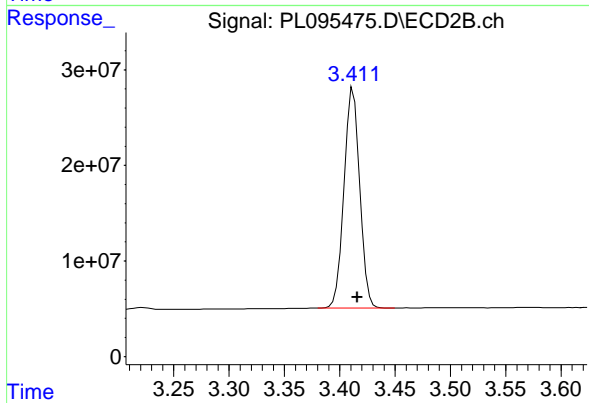
#1 Tetrachloro-m-xylene

R.T.: 2.903 min  
 Delta R.T.: -0.002 min  
 Response: 156162686  
 Conc: 49.11 ng/ml



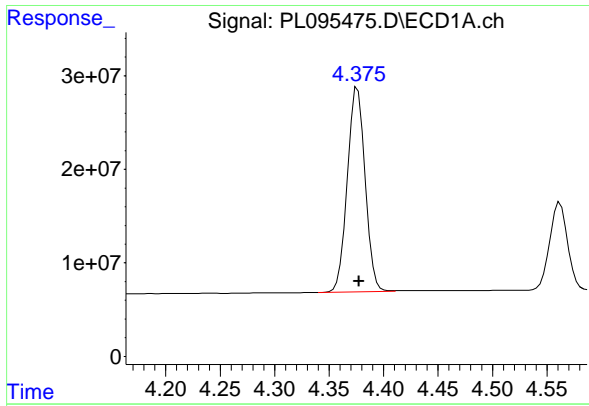
#2 alpha-BHC

R.T.: 4.045 min  
 Delta R.T.: -0.001 min  
 Response: 260944383  
 Conc: 52.68 ng/ml



#2 alpha-BHC

R.T.: 3.412 min  
 Delta R.T.: -0.004 min  
 Response: 227626343  
 Conc: 51.17 ng/ml



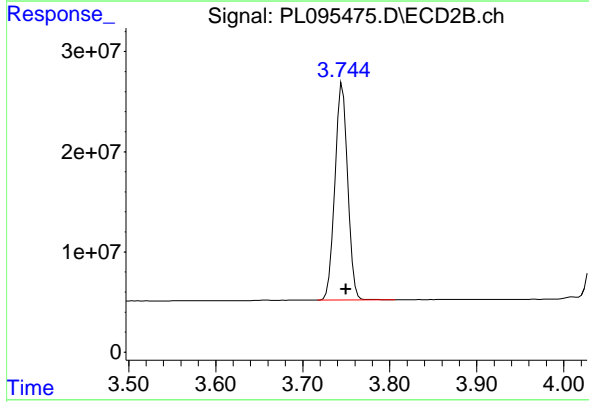
#3 gamma-BHC (Lindane)

R.T.: 4.375 min  
 Delta R.T.: -0.003 min  
 Response: 249088578  
 Conc: 52.62 ng/ml

Instrument :  
 ECD\_L  
 ClientSampleId :  
 PSTDCCC050

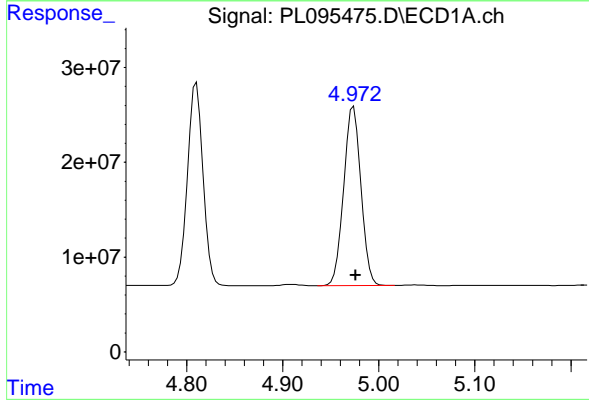
Manual Integrations  
 APPROVED

Reviewed By :Abdul Mirza 04/30/2025  
 Supervised By :mohammad ahmed 05/02/2025



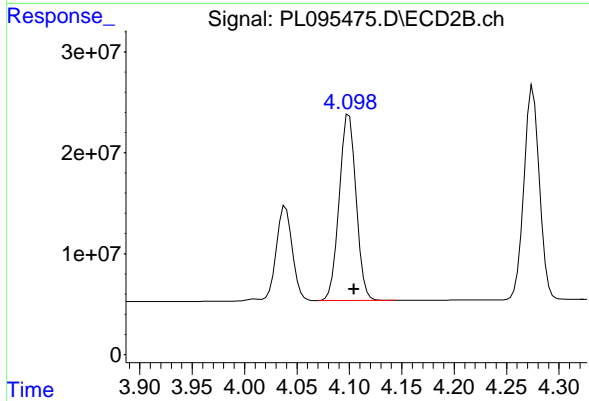
#3 gamma-BHC (Lindane)

R.T.: 3.746 min  
 Delta R.T.: -0.004 min  
 Response: 220426832  
 Conc: 50.12 ng/ml



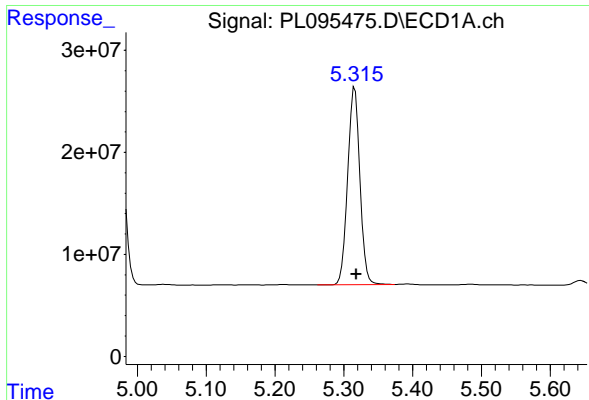
#4 Heptachlor

R.T.: 4.974 min  
 Delta R.T.: -0.002 min  
 Response: 234434739  
 Conc: 51.25 ng/ml



#4 Heptachlor

R.T.: 4.100 min  
 Delta R.T.: -0.005 min  
 Response: 207089769  
 Conc: 47.53 ng/ml



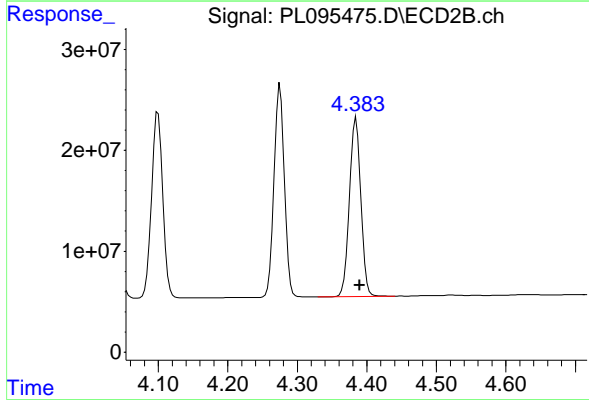
#5 Aldrin

R.T.: 5.316 min  
 Delta R.T.: -0.002 min  
 Response: 238910048  
 Conc: 52.02 ng/ml

Instrument : ECD\_L  
 Client Sample Id : PSTDCCC050

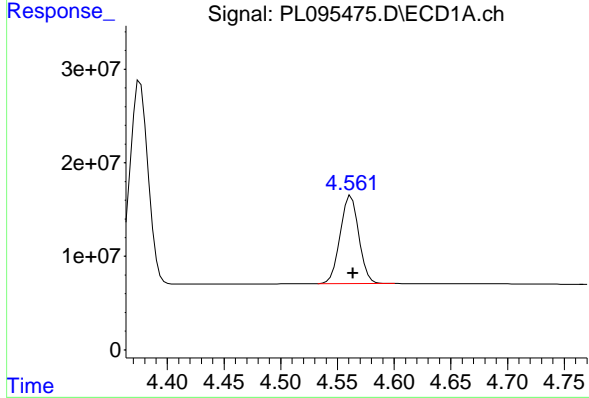
Manual Integrations  
 APPROVED

Reviewed By :Abdul Mirza 04/30/2025  
 Supervised By :mohammad ahmed 05/02/2025



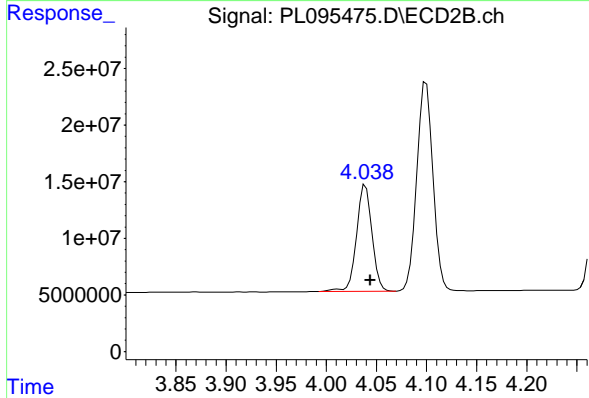
#5 Aldrin

R.T.: 4.385 min  
 Delta R.T.: -0.005 min  
 Response: 202226535  
 Conc: 49.14 ng/ml



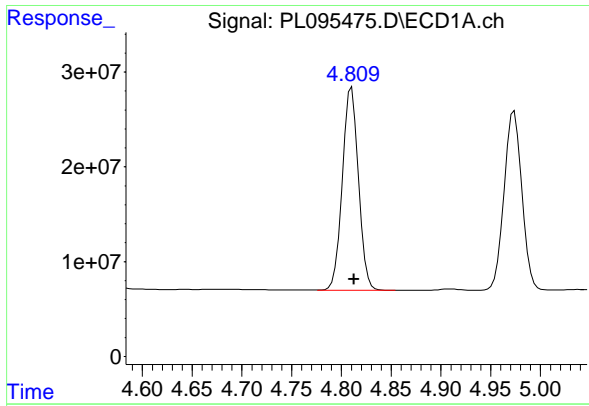
#6 beta-BHC

R.T.: 4.562 min  
 Delta R.T.: -0.002 min  
 Response: 107169482  
 Conc: 51.83 ng/ml



#6 beta-BHC

R.T.: 4.039 min  
 Delta R.T.: -0.005 min  
 Response: 101001080  
 Conc: 48.65 ng/ml



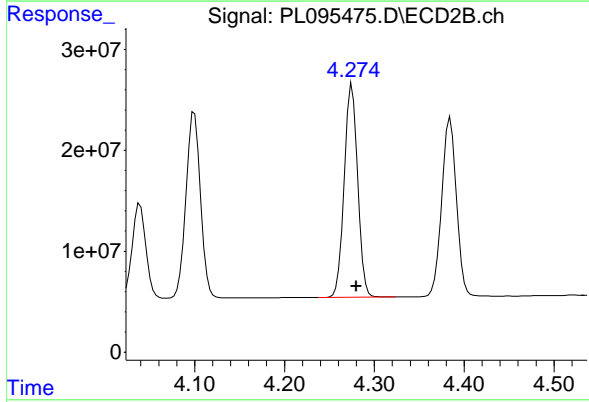
#7 delta-BHC

R.T.: 4.809 min  
 Delta R.T.: -0.004 min  
 Response: 241691960  
 Conc: 51.97 ng/ml

Instrument :  
 ECD\_L  
 ClientSampleId :  
 PSTDCCC050

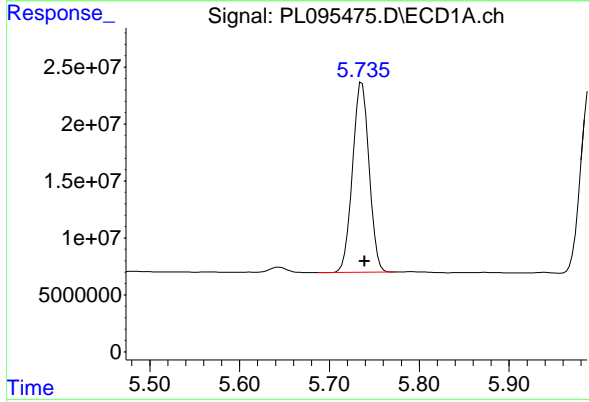
Manual Integrations  
 APPROVED

Reviewed By :Abdul Mirza 04/30/2025  
 Supervised By :mohammad ahmed 05/02/2025



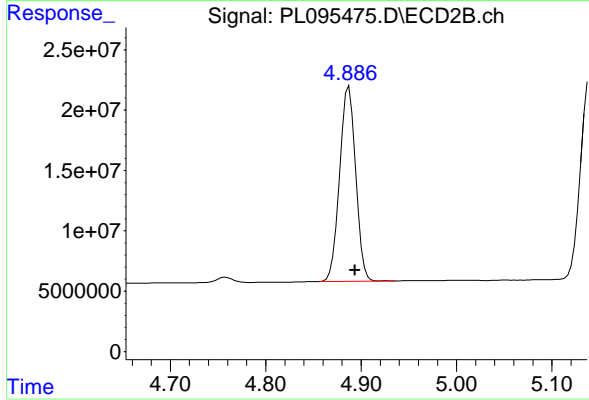
#7 delta-BHC

R.T.: 4.275 min  
 Delta R.T.: -0.005 min  
 Response: 218811923  
 Conc: 49.93 ng/ml



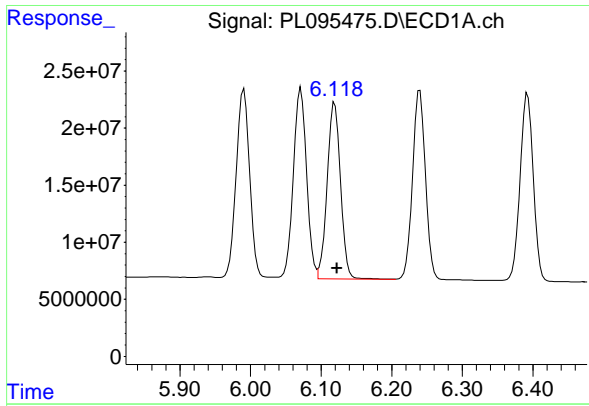
#8 Heptachlor epoxide

R.T.: 5.736 min  
 Delta R.T.: -0.003 min  
 Response: 213687424  
 Conc: 53.35 ng/ml



#8 Heptachlor epoxide

R.T.: 4.887 min  
 Delta R.T.: -0.006 min  
 Response: 188955093  
 Conc: 48.92 ng/ml



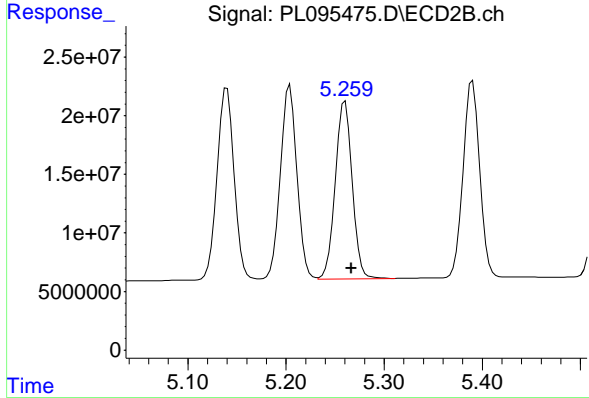
#9 Endosulfan I

R.T.: 6.119 min  
Delta R.T.: -0.003 min  
Response: 204005762  
Conc: 53.72 ng/ml

Instrument :  
ECD\_L  
ClientSampleId :  
PSTDCCC050

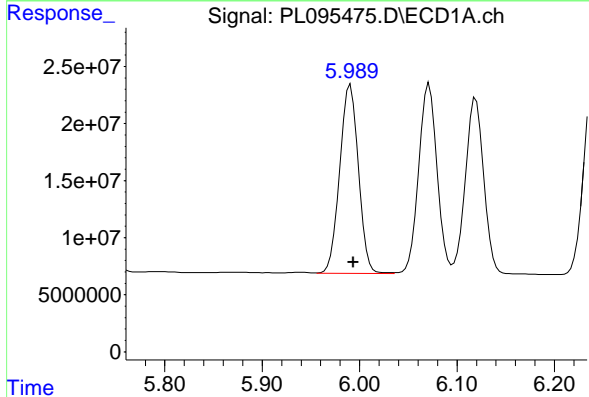
Manual Integrations  
APPROVED

Reviewed By :Abdul Mirza 04/30/2025  
Supervised By :mohammad ahmed 05/02/2025



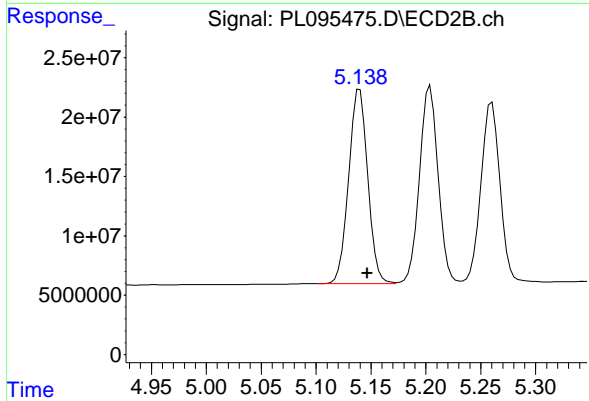
#9 Endosulfan I

R.T.: 5.260 min  
Delta R.T.: -0.006 min  
Response: 182450940  
Conc: 49.84 ng/ml



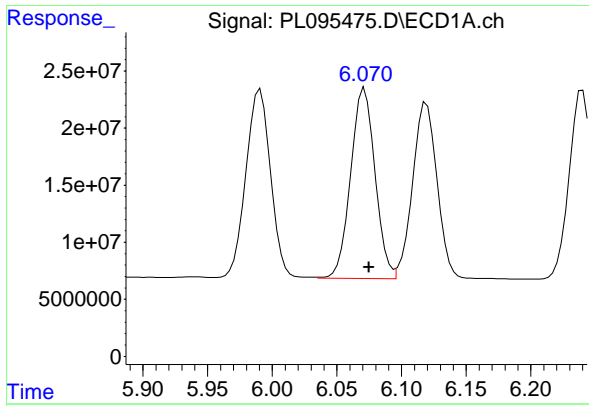
#10 gamma-Chlordane

R.T.: 5.991 min  
Delta R.T.: -0.003 min  
Response: 220450175  
Conc: 54.04 ng/ml



#10 gamma-Chlordane

R.T.: 5.138 min  
Delta R.T.: -0.008 min  
Response: 198189259  
Conc: 48.90 ng/ml m



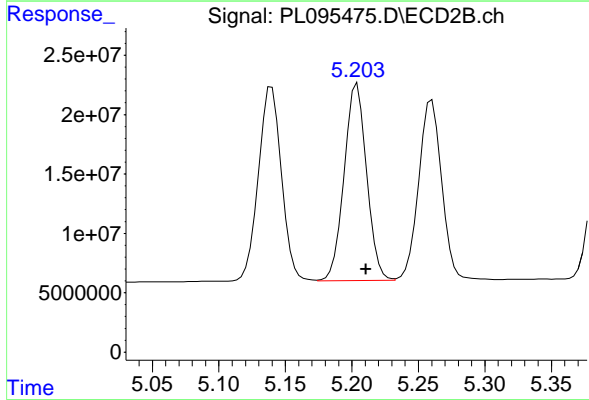
#11 alpha-Chlordane

R.T.: 6.071 min  
 Delta R.T.: -0.003 min  
 Response: 218314724  
 Conc: 53.69 ng/ml

Instrument :  
 ECD\_L  
 ClientSampleId :  
 PSTDCCC050

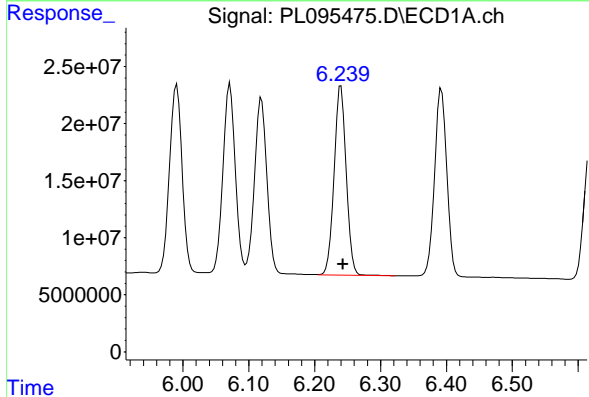
Manual Integrations  
 APPROVED

Reviewed By :Abdul Mirza 04/30/2025  
 Supervised By :mohammad ahmed 05/02/2025



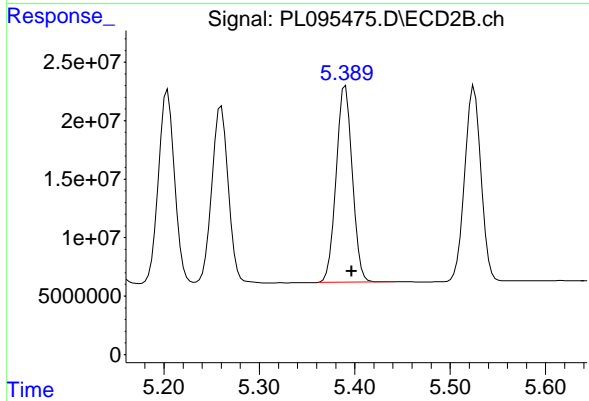
#11 alpha-Chlordane

R.T.: 5.204 min  
 Delta R.T.: -0.007 min  
 Response: 195113115  
 Conc: 49.01 ng/ml



#12 4,4'-DDE

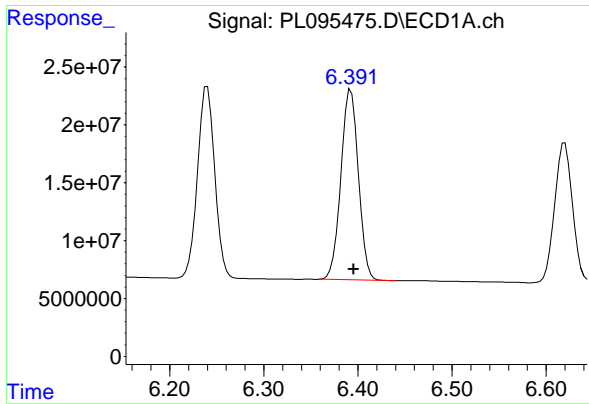
R.T.: 6.240 min  
 Delta R.T.: -0.003 min  
 Response: 211906002  
 Conc: 54.05 ng/ml



#12 4,4'-DDE

R.T.: 5.390 min  
 Delta R.T.: -0.007 min  
 Response: 196864195  
 Conc: 48.41 ng/ml





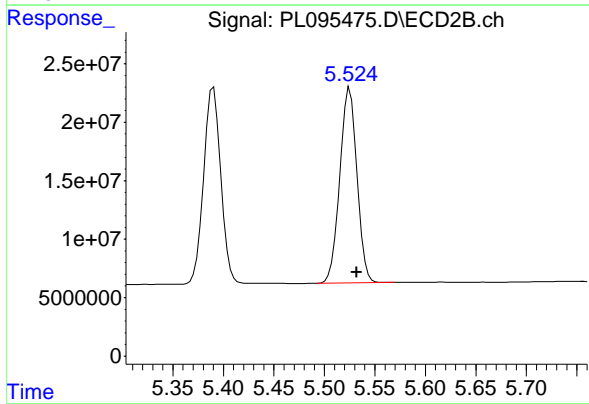
#13 Dieldrin

R.T.: 6.393 min  
 Delta R.T.: -0.003 min  
 Response: 212125311  
 Conc: 55.03 ng/ml

Instrument :  
 ECD\_L  
 Client Sample Id :  
 PSTDCCC050

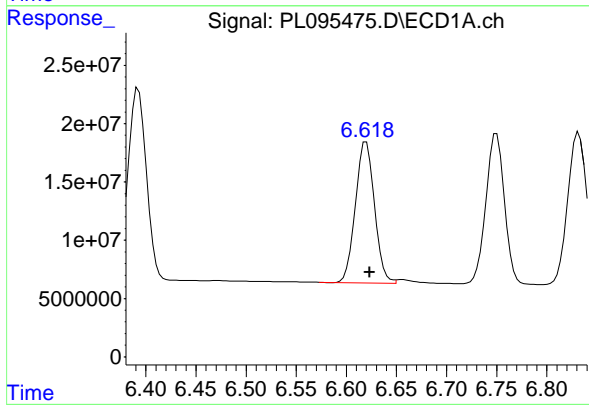
Manual Integrations  
 APPROVED

Reviewed By :Abdul Mirza 04/30/2025  
 Supervised By :mohammad ahmed 05/02/2025



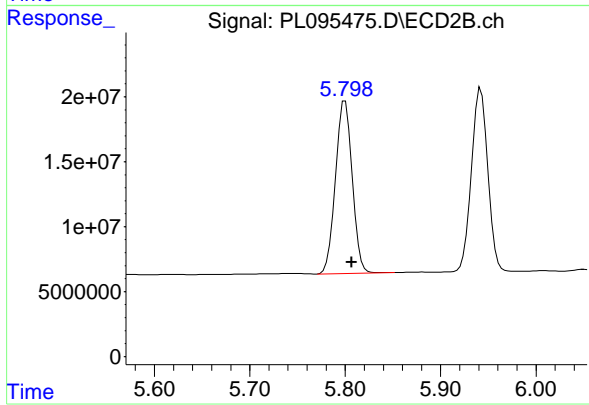
#13 Dieldrin

R.T.: 5.525 min  
 Delta R.T.: -0.007 min  
 Response: 197537236  
 Conc: 48.57 ng/ml



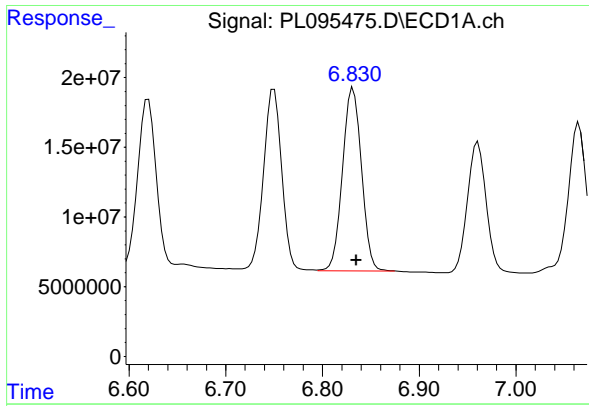
#14 Endrin

R.T.: 6.620 min  
 Delta R.T.: -0.003 min  
 Response: 160422335  
 Conc: 50.37 ng/ml



#14 Endrin

R.T.: 5.800 min  
 Delta R.T.: -0.007 min  
 Response: 161811532  
 Conc: 44.44 ng/ml



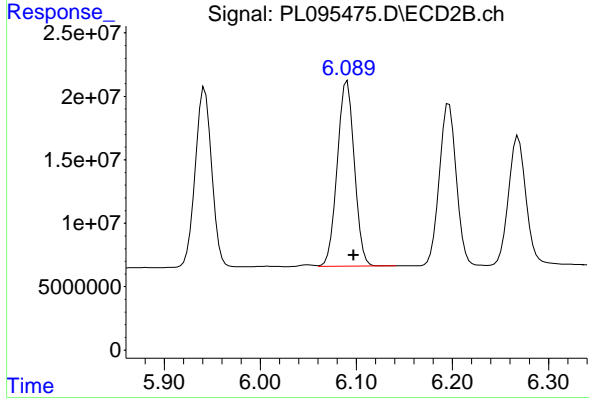
#15 Endosulfan II

R.T.: 6.830 min  
 Delta R.T.: -0.004 min  
 Response: 178503541  
 Conc: 55.92 ng/ml

Instrument : ECD\_L  
 Client Sample Id : PSTDCCC050

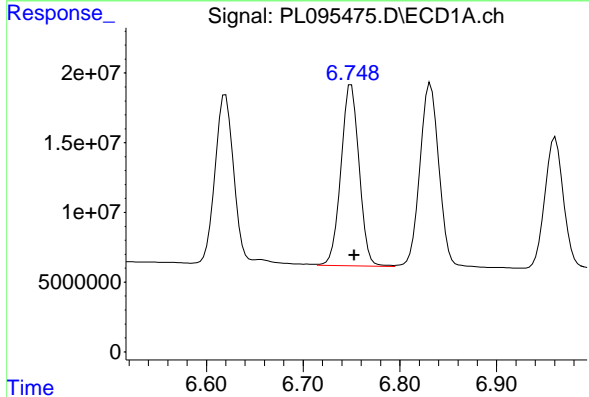
Manual Integrations  
 APPROVED

Reviewed By :Abdul Mirza 04/30/2025  
 Supervised By :mohammad ahmed 05/02/2025



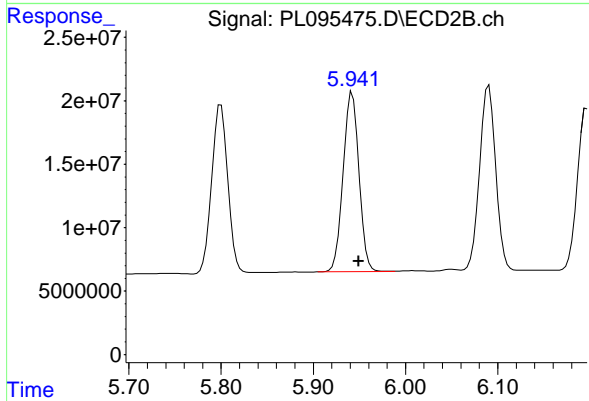
#15 Endosulfan II

R.T.: 6.090 min  
 Delta R.T.: -0.007 min  
 Response: 178220942  
 Conc: 49.63 ng/ml



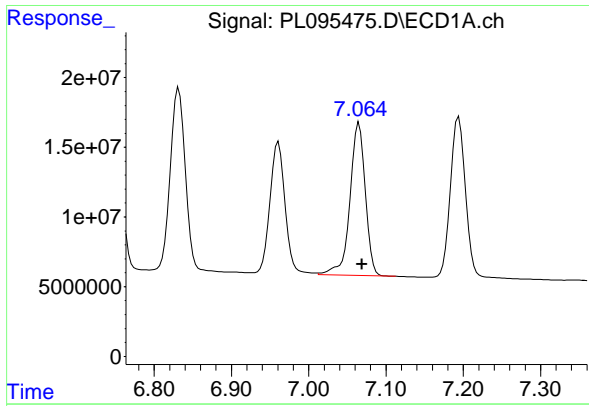
#16 4,4'-DDD

R.T.: 6.750 min  
 Delta R.T.: -0.003 min  
 Response: 168790414  
 Conc: 59.62 ng/ml



#16 4,4'-DDD

R.T.: 5.942 min  
 Delta R.T.: -0.007 min  
 Response: 168285836  
 Conc: 51.51 ng/ml



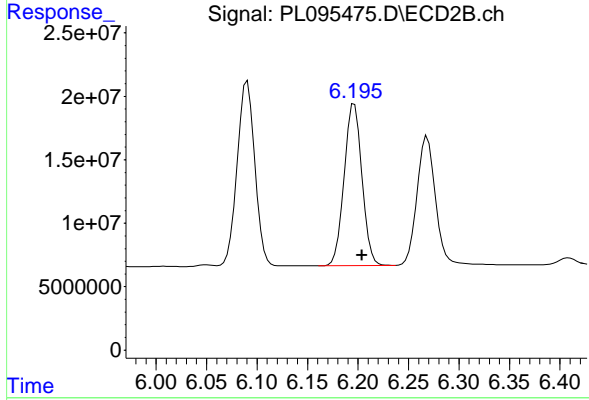
#17 4,4' -DDT

R.T.: 7.065 min  
 Delta R.T.: -0.004 min  
 Response: 149732587  
 Conc: 52.56 ng/ml

Instrument :  
 ECD\_L  
 ClientSampleId :  
 PSTDCCC050

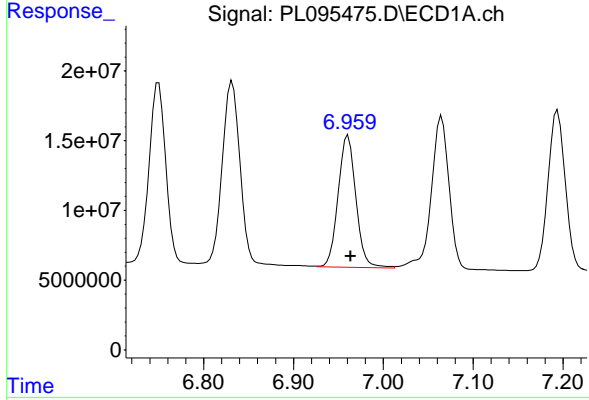
Manual Integrations  
 APPROVED

Reviewed By :Abdul Mirza 04/30/2025  
 Supervised By :mohammad ahmed 05/02/2025



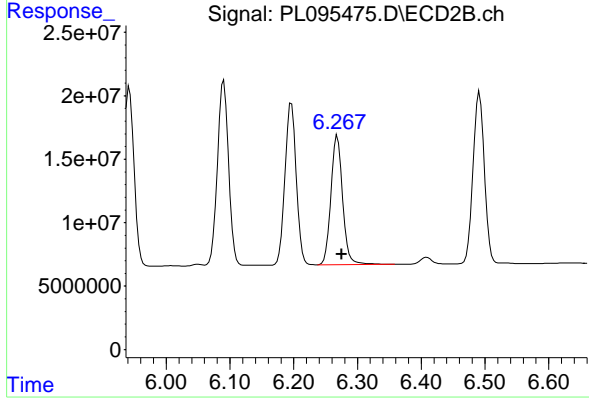
#17 4,4' -DDT

R.T.: 6.196 min  
 Delta R.T.: -0.007 min  
 Response: 157074710  
 Conc: 45.71 ng/ml



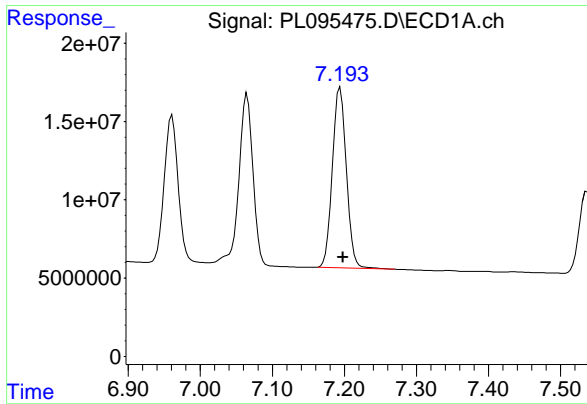
#18 Endrin aldehyde

R.T.: 6.961 min  
 Delta R.T.: -0.003 min  
 Response: 129809526  
 Conc: 55.93 ng/ml



#18 Endrin aldehyde

R.T.: 6.269 min  
 Delta R.T.: -0.007 min  
 Response: 130430292  
 Conc: 49.91 ng/ml



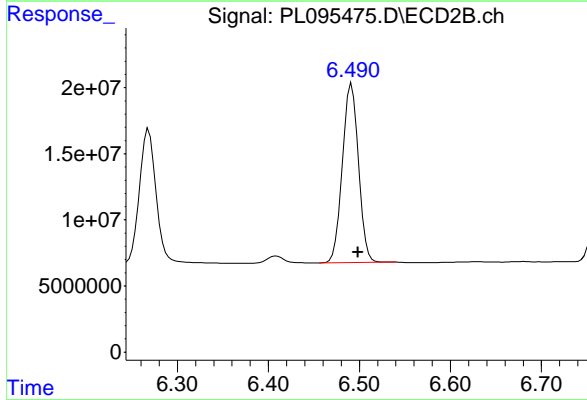
#19 Endosulfan Sulfate

R.T.: 7.194 min  
 Delta R.T.: -0.004 min  
 Response: 154426776  
 Conc: 55.12 ng/ml

Instrument : ECD\_L  
 Client Sample Id : PSTDCCC050

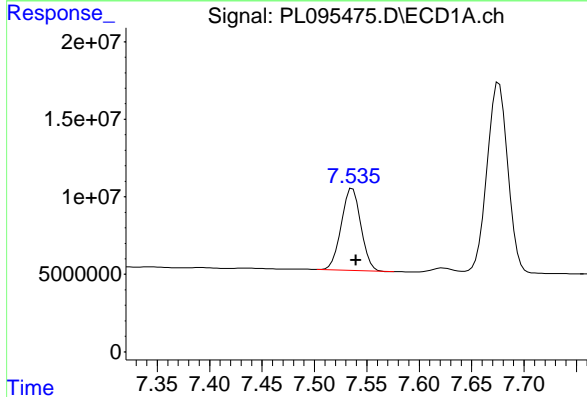
Manual Integrations  
 APPROVED

Reviewed By :Abdul Mirza 04/30/2025  
 Supervised By :mohammad ahmed 05/02/2025



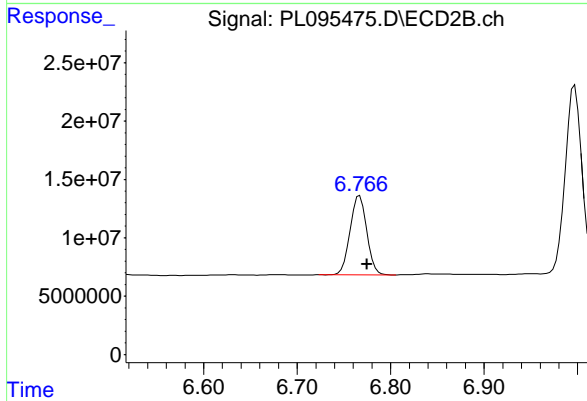
#19 Endosulfan Sulfate

R.T.: 6.492 min  
 Delta R.T.: -0.007 min  
 Response: 166926592  
 Conc: 50.31 ng/ml



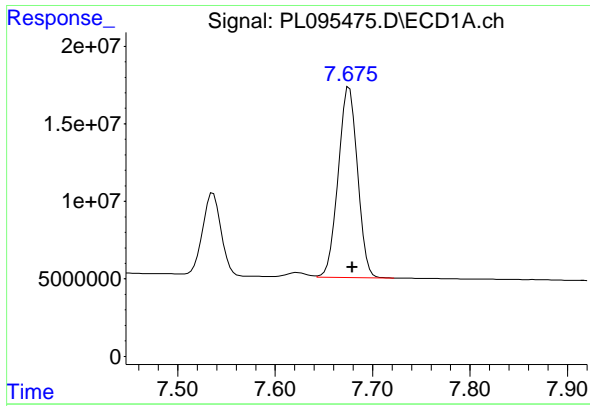
#20 Methoxychlor

R.T.: 7.536 min  
 Delta R.T.: -0.003 min  
 Response: 68941613  
 Conc: 49.42 ng/ml



#20 Methoxychlor

R.T.: 6.767 min  
 Delta R.T.: -0.008 min  
 Response: 84372136  
 Conc: 44.23 ng/ml



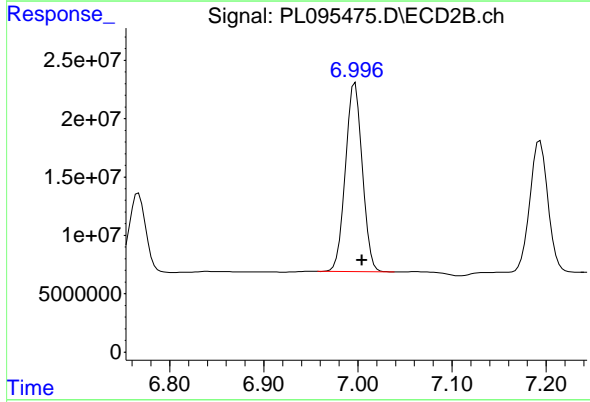
#21 Endrin ketone

R.T.: 7.676 min  
 Delta R.T.: -0.003 min  
 Response: 168737424  
 Conc: 59.19 ng/ml

Instrument :  
 ECD\_L  
 ClientSampleId :  
 PSTDCCC050

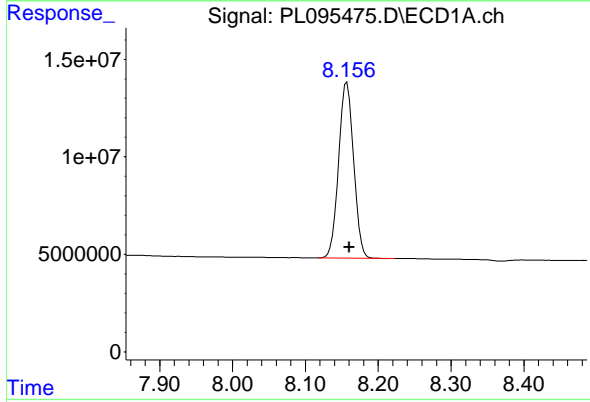
Manual Integrations  
 APPROVED

Reviewed By :Abdul Mirza 04/30/2025  
 Supervised By :mohammad ahmed 05/02/2025



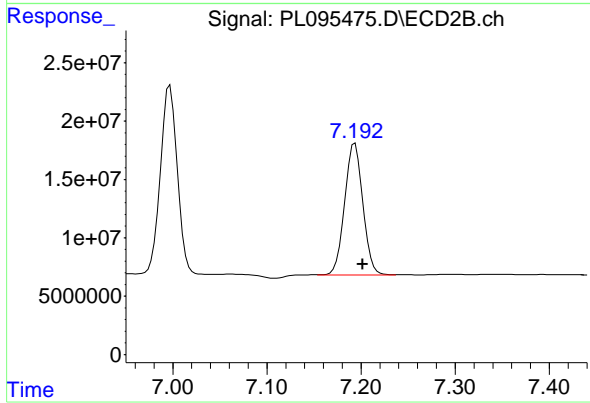
#21 Endrin ketone

R.T.: 6.997 min  
 Delta R.T.: -0.007 min  
 Response: 201102710  
 Conc: 57.11 ng/ml



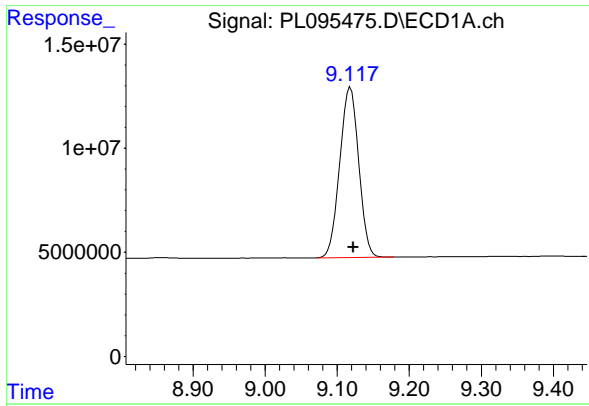
#22 Mirex

R.T.: 8.157 min  
 Delta R.T.: -0.004 min  
 Response: 129009126  
 Conc: 54.30 ng/ml



#22 Mirex

R.T.: 7.192 min  
 Delta R.T.: -0.009 min  
 Response: 151573550  
 Conc: 52.59 ng/ml m



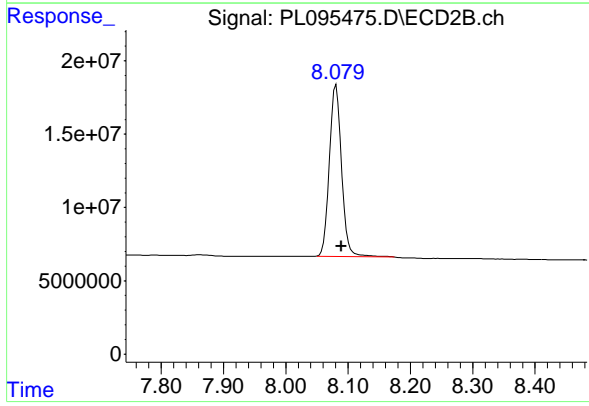
#28 Decachlorobiphenyl

R.T.: 9.118 min  
Delta R.T.: -0.004 min  
Response: 149276487  
Conc: 53.87 ng/ml

Instrument :  
ECD\_L  
Client Sample Id :  
PSTDCCC050

Manual Integrations  
APPROVED

Reviewed By :Abdul Mirza 04/30/2025  
Supervised By :mohammad ahmed 05/02/2025



#28 Decachlorobiphenyl

R.T.: 8.081 min  
Delta R.T.: -0.009 min  
Response: 158493088  
Conc: 53.56 ng/ml