

Data Path : Z:\pestpcbsrv\HPCHEM1\ECD\_L\Data\PL050225\  
 Data File : PL095484.D  
 Signal(s) : Signal #1: ECD1A.ch Signal #2: ECD2B.ch  
 Acq On : 29 Apr 2025 17:42  
 Operator : AR\AJ  
 Sample : PSTDCCC050  
 Misc :  
 ALS Vial : 20 Sample Multiplier: 1

**Instrument :**  
 ECD\_L  
**ClientSampleId :**  
 PSTDCCC050

**Manual Integrations**  
**APPROVED**

Reviewed By :Abdul Mirza 04/30/2025  
 Supervised By :mohammad ahmed 05/02/2025

Integration File signal 1: autoint1.e  
 Integration File signal 2: autoint2.e  
 Quant Time: Apr 30 00:57:18 2025  
 Quant Method : Z:\pestpcbsrv\HPCHEM1\ECD\_L\methods\PL042325.M  
 Quant Title : GC Extractables  
 QLast Update : Wed Apr 23 16:23:18 2025  
 Response via : Initial Calibration  
 Integrator: ChemStation

Volume Inj. : 1 µl  
 Signal #1 Phase : ZB-MR2 Signal #2 Phase: ZB-MR2  
 Signal #1 Info : 30M x 0.32mm x0.5 Signal #2 Info : 30M x 0.32mm x0.25µm

Compound	RT#1	RT#2	Resp#1	Resp#2	ng/ml	ng/ml
-----						
System Monitoring Compounds						
1) SA Tetrachlo...	3.596	2.906	145.6E6	161.5E6	44.612	50.785
28) SA Decachlor...	9.122	8.084	129.6E6	133.4E6	46.791	45.079
Target Compounds						
2) A alpha-BHC	4.047	3.415	224.5E6	241.6E6	45.329	54.303
3) MA gamma-BHC...	4.377	3.749	211.5E6	227.4E6	44.670m	51.709
4) MA Heptachlor	4.976	4.103	200.0E6	211.6E6	43.714	48.574
5) MB Aldrin	5.318	4.386	206.5E6	211.1E6	44.962	51.287m
6) B beta-BHC	4.564	4.042	91627858	99878417	44.318	48.114
7) B delta-BHC	4.812	4.279	209.2E6	225.5E6	44.993m	51.450
8) B Heptachlo...	5.739	4.890	185.4E6	190.3E6	46.298	49.257
9) A Endosulfan I	6.122	5.264	176.0E6	179.3E6	46.359	48.995
10) B gamma-Chl...	5.993	5.142	190.6E6	195.3E6	46.720	48.188m
11) B alpha-Chl...	6.075	5.208	189.0E6	190.8E6	46.486	47.919
12) B 4,4'-DDE	6.243	5.392	181.8E6	194.2E6	46.367	47.758m
13) MA Dieldrin	6.396	5.529	183.9E6	198.3E6	47.695	48.763
14) MA Endrin	6.623	5.803	136.3E6	157.3E6	42.788	43.206
15) B Endosulfa...	6.834	6.094	162.2E6	172.3E6	50.814	47.988
16) A 4,4'-DDD	6.753	5.946	151.8E6	170.7E6	53.604	52.254
17) MA 4,4'-DDT	7.068	6.200	124.0E6	147.0E6	43.532	42.791
18) B Endrin al...	6.964	6.271	113.1E6	124.6E6	48.724	47.684
19) B Endosulfa...	7.197	6.495	134.1E6	158.6E6	47.856	47.807
20) A Methoxychlor	7.539	6.770	57135811	77808827	40.954	40.793
21) B Endrin ke...	7.679	7.001	146.8E6	191.5E6	51.486	54.380
22) Mirex	8.160	7.195	112.4E6	137.2E6	47.294	47.607m

(f)=RT Delta > 1/2 Window (#)=Amounts differ by > 25% (m)=manual int.

Data Path : Z:\pestpcbsrv\HPCHEM1\ECD\_L\Data\PL050225\  
 Data File : PL095484.D  
 Signal(s) : Signal #1: ECD1A.ch Signal #2: ECD2B.ch  
 Acq On : 29 Apr 2025 17:42  
 Operator : AR\AJ  
 Sample : PSTDCCC050  
 Misc :  
 ALS Vial : 20 Sample Multiplier: 1

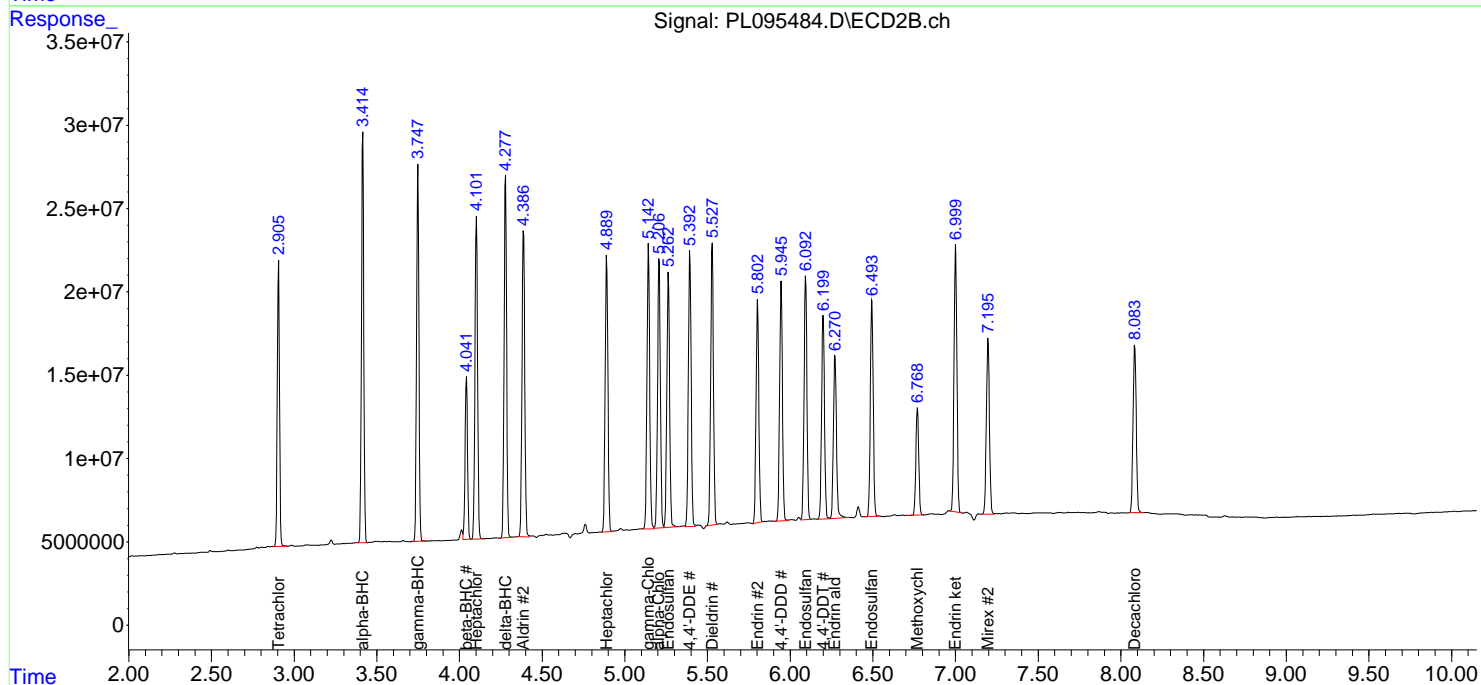
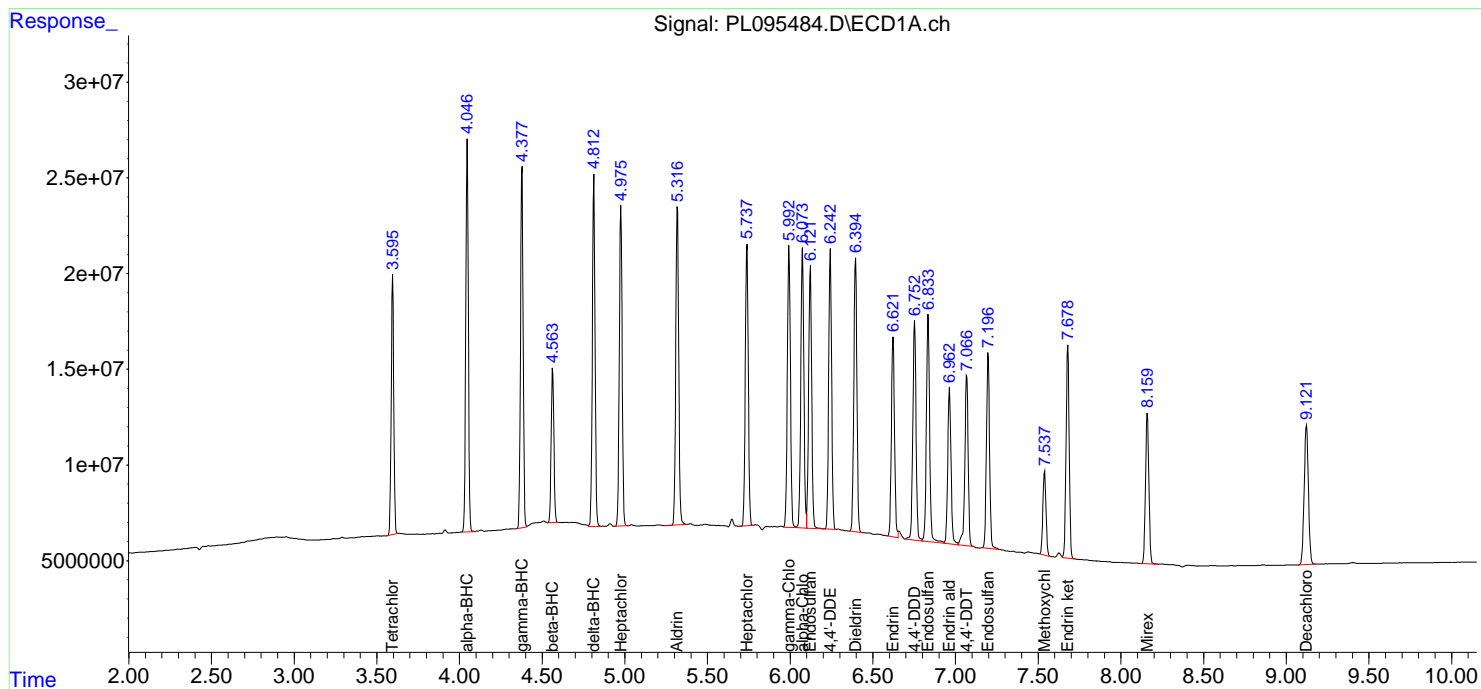
Instrument :  
 ECD\_L  
 ClientSampleId :  
 PSTDCCC050

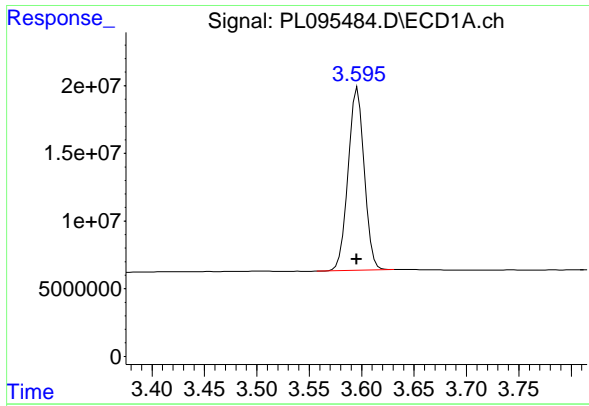
Manual Integrations  
 APPROVED

Reviewed By :Abdul Mirza 04/30/2025  
 Supervised By :mohammad ahmed 05/02/2025

Integration File signal 1: autoint1.e  
 Integration File signal 2: autoint2.e  
 Quant Time: Apr 30 00:57:18 2025  
 Quant Method : Z:\pestpcbsrv\HPCHEM1\ECD\_L\methods\PL042325.M  
 Quant Title : GC Extractables  
 QLast Update : Wed Apr 23 16:23:18 2025  
 Response via : Initial Calibration  
 Integrator: ChemStation

Volume Inj. : 1 µl  
 Signal #1 Phase : ZB-MR1 Signal #2 Phase: ZB-MR2  
 Signal #1 Info : 30M x 0.32mm x0.5 Signal #2 Info : 30M x 0.32mm x0.25µm





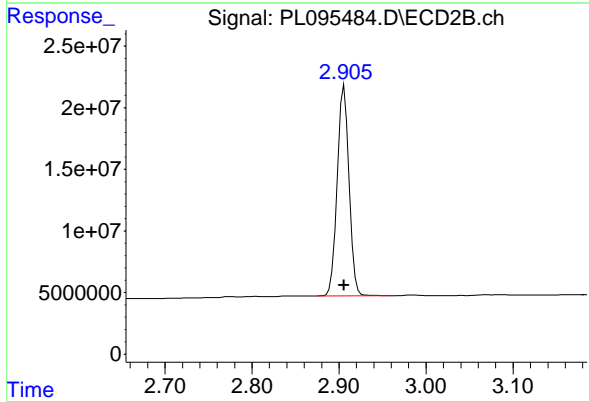
#1 Tetrachloro-m-xylene

R.T.: 3.596 min  
 Delta R.T.: 0.001 min  
 Response: 145644863  
 Conc: 44.61 ng/ml

Instrument :  
 ECD\_L  
 Client Sample Id :  
 PSTDCCC050

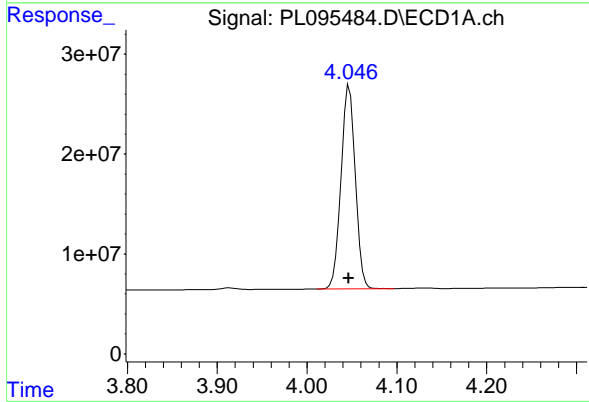
Manual Integrations  
 APPROVED

Reviewed By :Abdul Mirza 04/30/2025  
 Supervised By :mohammad ahmed 05/02/2025



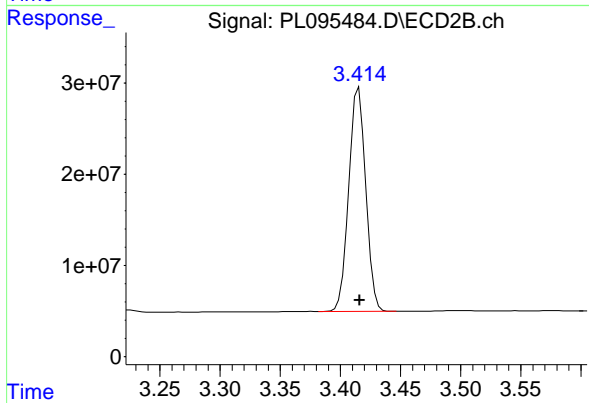
#1 Tetrachloro-m-xylene

R.T.: 2.906 min  
 Delta R.T.: 0.000 min  
 Response: 161482817  
 Conc: 50.78 ng/ml



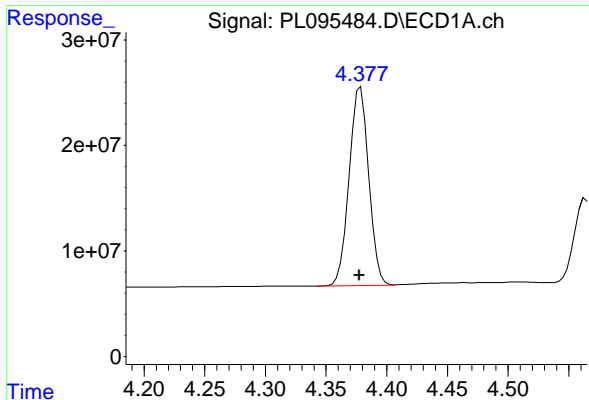
#2 alpha-BHC

R.T.: 4.047 min  
 Delta R.T.: 0.000 min  
 Response: 224546977  
 Conc: 45.33 ng/ml



#2 alpha-BHC

R.T.: 3.415 min  
 Delta R.T.: 0.000 min  
 Response: 241578017  
 Conc: 54.30 ng/ml



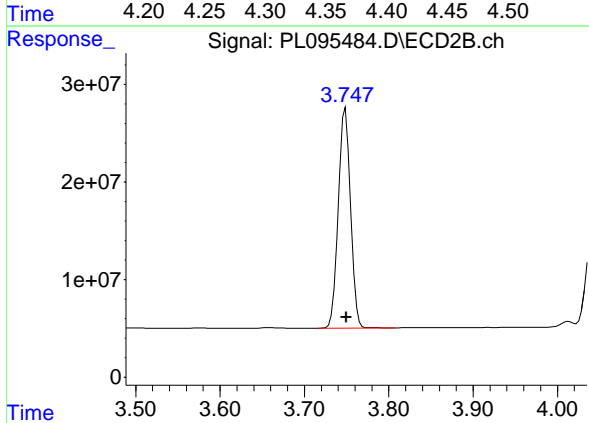
#3 gamma-BHC (Lindane)

R.T.: 4.377 min  
 Delta R.T.: 0.000 min  
 Response: 211466438  
 Conc: 44.67 ng/ml

Instrument : ECD\_L  
 Client Sample Id : PSTDCCC050

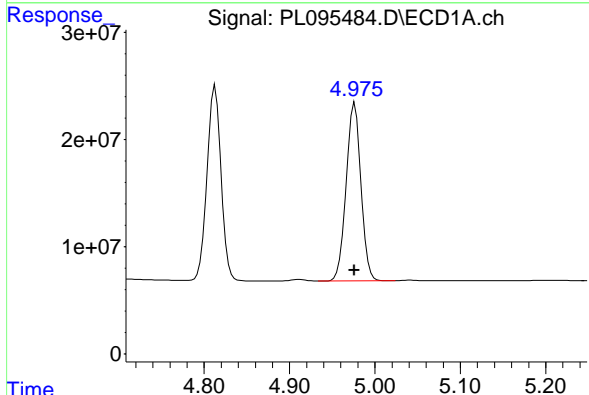
Manual Integrations  
 APPROVED

Reviewed By :Abdul Mirza 04/30/2025  
 Supervised By :mohammad ahmed 05/02/2025



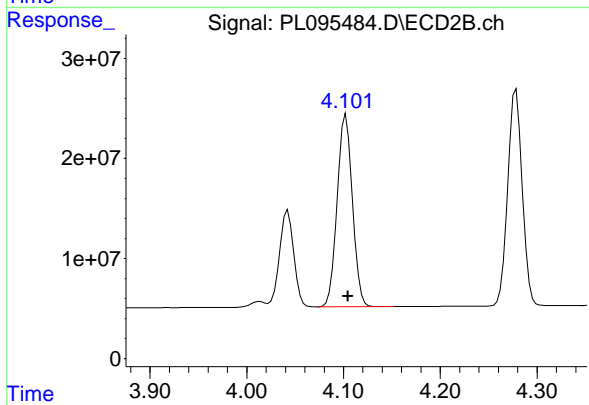
#3 gamma-BHC (Lindane)

R.T.: 3.749 min  
 Delta R.T.: -0.001 min  
 Response: 227426289  
 Conc: 51.71 ng/ml



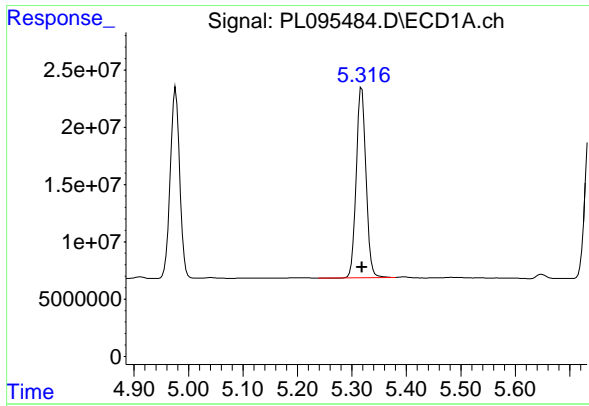
#4 Heptachlor

R.T.: 4.976 min  
 Delta R.T.: 0.000 min  
 Response: 199966691  
 Conc: 43.71 ng/ml



#4 Heptachlor

R.T.: 4.103 min  
 Delta R.T.: -0.002 min  
 Response: 211622648  
 Conc: 48.57 ng/ml



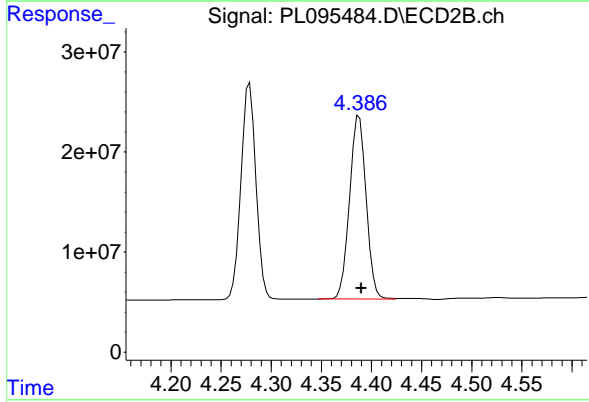
#5 Aldrin

R.T.: 5.318 min  
 Delta R.T.: 0.000 min  
 Response: 206513805  
 Conc: 44.96 ng/ml

Instrument : ECD\_L  
 ClientSampleId : PSTDCCC050

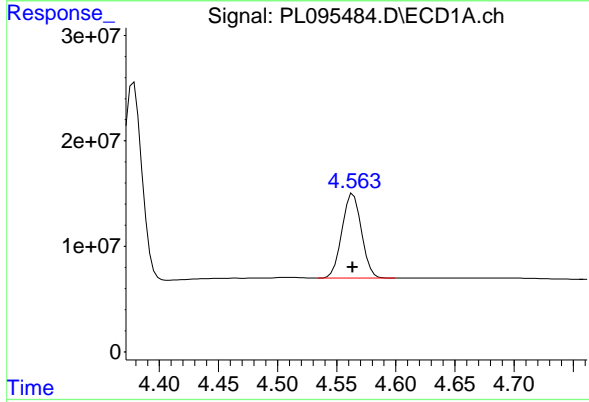
Manual Integrations  
 APPROVED

Reviewed By :Abdul Mirza 04/30/2025  
 Supervised By :mohammad ahmed 05/02/2025



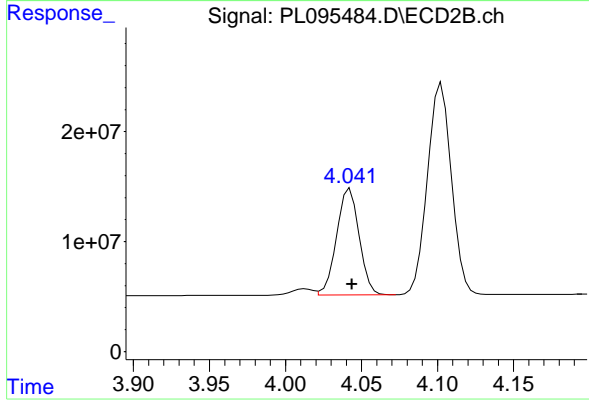
#5 Aldrin

R.T.: 4.386 min  
 Delta R.T.: -0.004 min  
 Response: 211079358  
 Conc: 51.29 ng/ml m



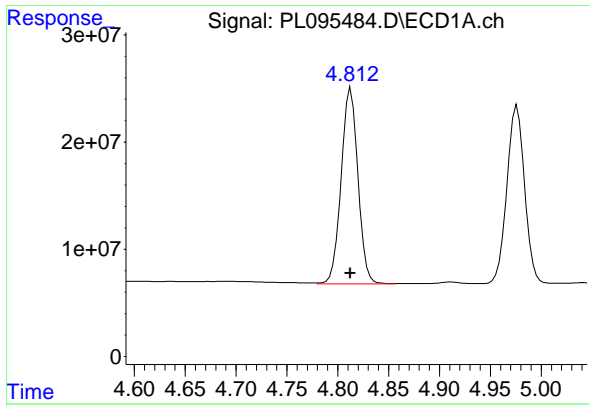
#6 beta-BHC

R.T.: 4.564 min  
 Delta R.T.: 0.000 min  
 Response: 91627858  
 Conc: 44.32 ng/ml



#6 beta-BHC

R.T.: 4.042 min  
 Delta R.T.: -0.001 min  
 Response: 99878417  
 Conc: 48.11 ng/ml



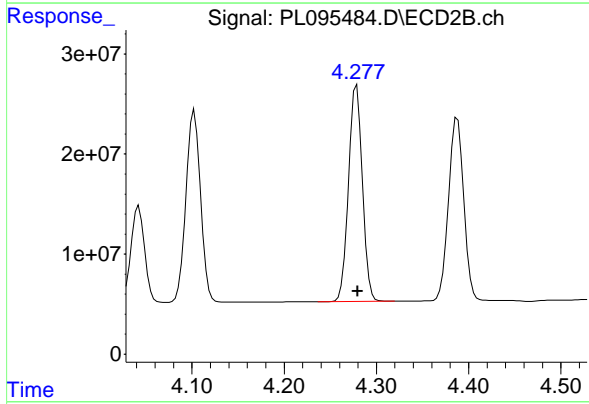
#7 delta-BHC

R.T.: 4.812 min  
 Delta R.T.: 0.000 min  
 Response: 209248979  
 Conc: 44.99 ng/ml

Instrument : ECD\_L  
 Client Sample Id : PSTDCCC050

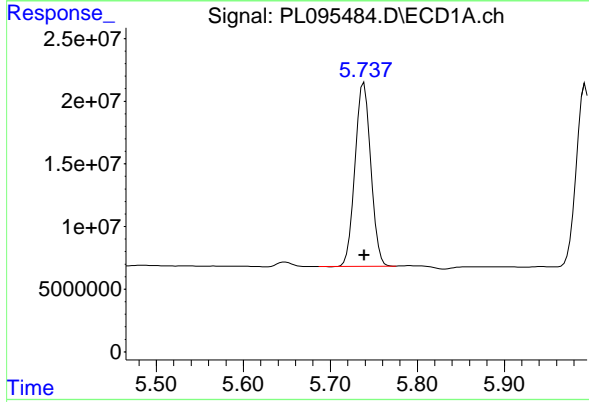
Manual Integrations  
 APPROVED

Reviewed By :Abdul Mirza 04/30/2025  
 Supervised By :mohammad ahmed 05/02/2025



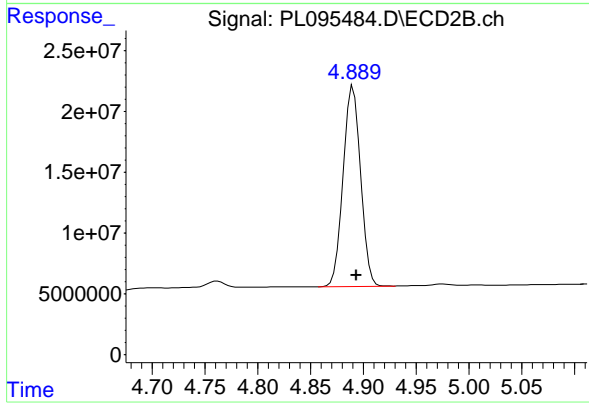
#7 delta-BHC

R.T.: 4.279 min  
 Delta R.T.: -0.001 min  
 Response: 225450326  
 Conc: 51.45 ng/ml



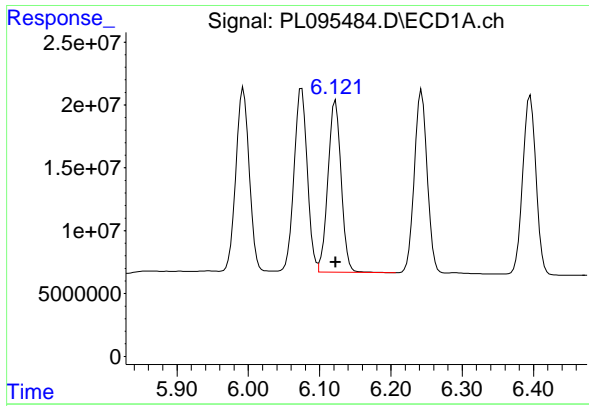
#8 Heptachlor epoxide

R.T.: 5.739 min  
 Delta R.T.: 0.000 min  
 Response: 185430567  
 Conc: 46.30 ng/ml



#8 Heptachlor epoxide

R.T.: 4.890 min  
 Delta R.T.: -0.003 min  
 Response: 190261354  
 Conc: 49.26 ng/ml



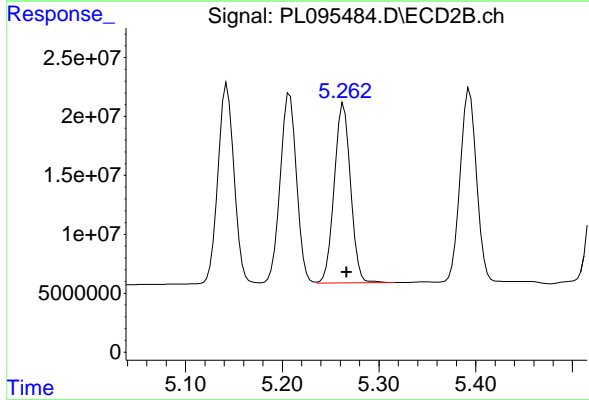
#9 Endosulfan I

R.T.: 6.122 min  
 Delta R.T.: 0.000 min  
 Response: 176049774  
 Conc: 46.36 ng/ml

Instrument :  
 ECD\_L  
 ClientSampleId :  
 PSTDCCC050

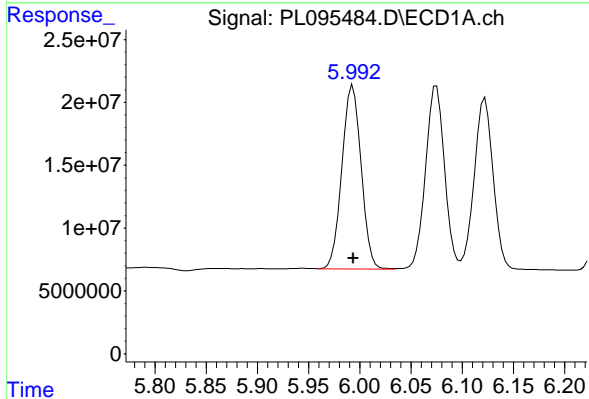
Manual Integrations  
 APPROVED

Reviewed By :Abdul Mirza 04/30/2025  
 Supervised By :mohammad ahmed 05/02/2025



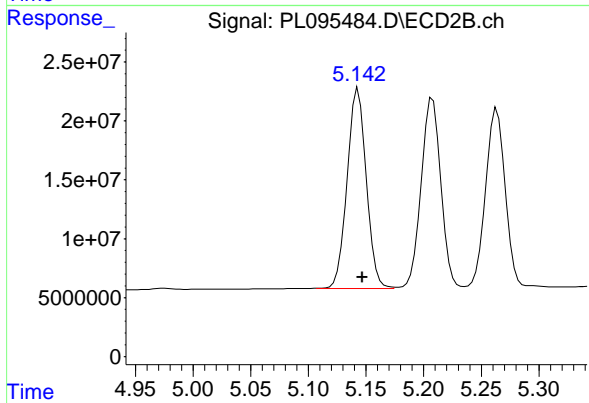
#9 Endosulfan I

R.T.: 5.264 min  
 Delta R.T.: -0.003 min  
 Response: 179342727  
 Conc: 49.00 ng/ml



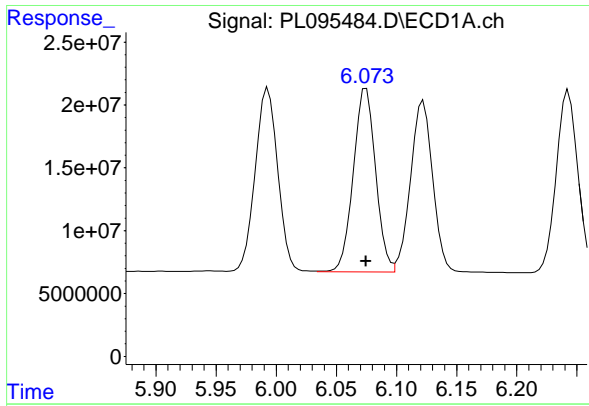
#10 gamma-Chlordane

R.T.: 5.993 min  
 Delta R.T.: 0.000 min  
 Response: 190589310  
 Conc: 46.72 ng/ml



#10 gamma-Chlordane

R.T.: 5.142 min  
 Delta R.T.: -0.005 min  
 Response: 195289795  
 Conc: 48.19 ng/ml m



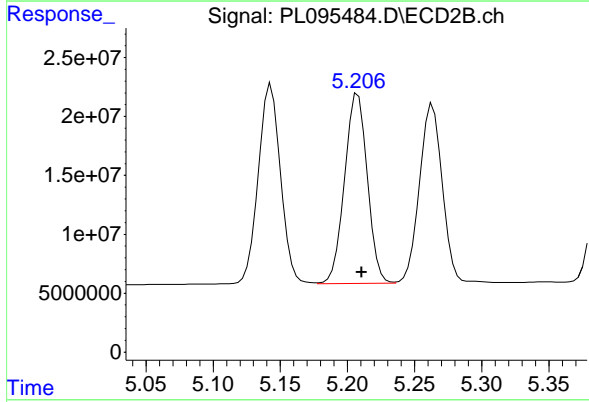
#11 alpha-Chlordane

R.T.: 6.075 min  
 Delta R.T.: 0.000 min  
 Response: 189015878  
 Conc: 46.49 ng/ml

Instrument :  
 ECD\_L  
 ClientSampleId :  
 PSTDCCC050

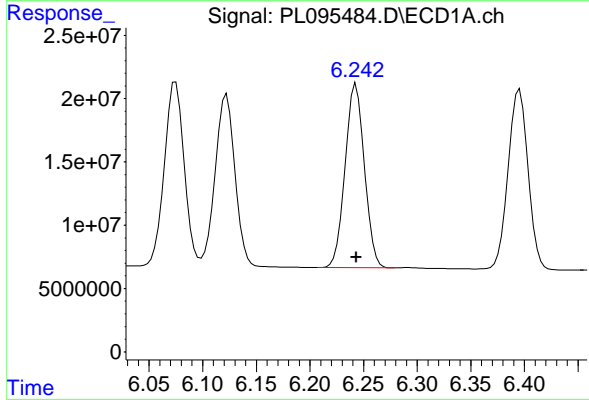
Manual Integrations  
 APPROVED

Reviewed By :Abdul Mirza 04/30/2025  
 Supervised By :mohammad ahmed 05/02/2025



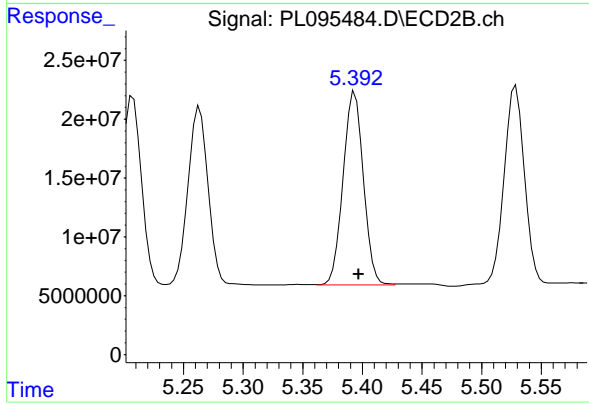
#11 alpha-Chlordane

R.T.: 5.208 min  
 Delta R.T.: -0.003 min  
 Response: 190767496  
 Conc: 47.92 ng/ml



#12 4,4'-DDE

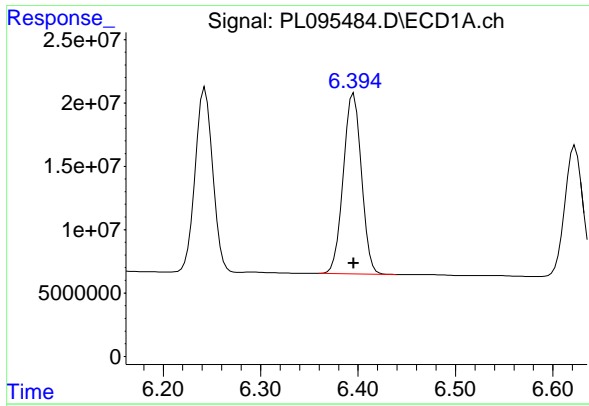
R.T.: 6.243 min  
 Delta R.T.: 0.000 min  
 Response: 181784018  
 Conc: 46.37 ng/ml



#12 4,4'-DDE

R.T.: 5.392 min  
 Delta R.T.: -0.005 min  
 Response: 194231131  
 Conc: 47.76 ng/ml m





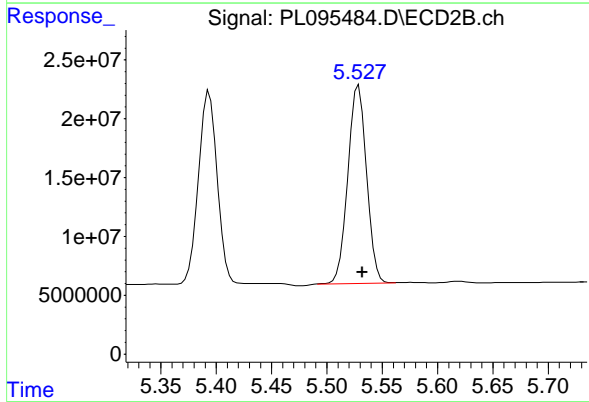
#13 Dieldrin

R.T.: 6.396 min  
 Delta R.T.: 0.000 min  
 Response: 183854222  
 Conc: 47.69 ng/ml

Instrument :  
 ECD\_L  
 ClientSampleId :  
 PSTDCCC050

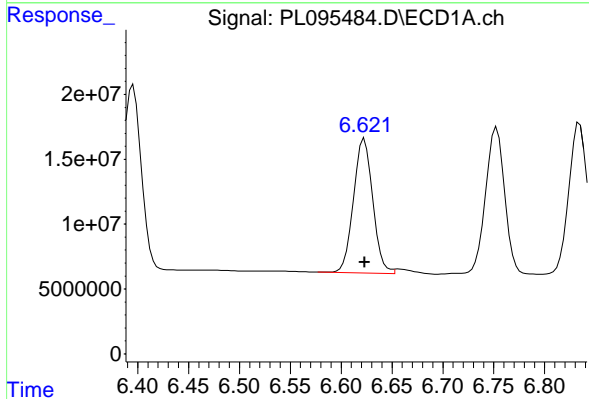
Manual Integrations  
 APPROVED

Reviewed By :Abdul Mirza 04/30/2025  
 Supervised By :mohammad ahmed 05/02/2025



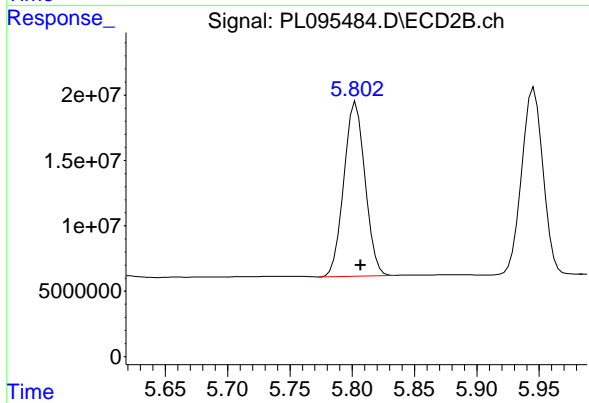
#13 Dieldrin

R.T.: 5.529 min  
 Delta R.T.: -0.003 min  
 Response: 198322422  
 Conc: 48.76 ng/ml



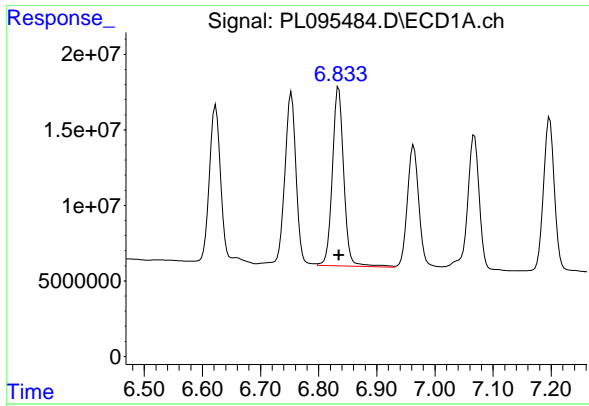
#14 Endrin

R.T.: 6.623 min  
 Delta R.T.: 0.000 min  
 Response: 136270418  
 Conc: 42.79 ng/ml



#14 Endrin

R.T.: 5.803 min  
 Delta R.T.: -0.004 min  
 Response: 157302399  
 Conc: 43.21 ng/ml



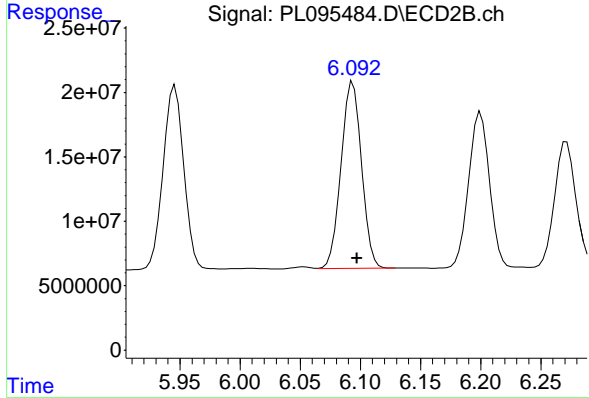
#15 Endosulfan II

R.T.: 6.834 min  
 Delta R.T.: 0.000 min  
 Response: 162205941  
 Conc: 50.81 ng/ml

Instrument : ECD\_L  
 ClientSampleId : PSTDCCC050

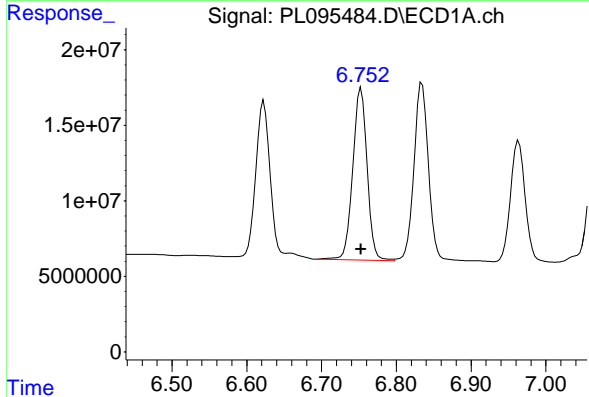
Manual Integrations  
 APPROVED

Reviewed By :Abdul Mirza 04/30/2025  
 Supervised By :mohammad ahmed 05/02/2025



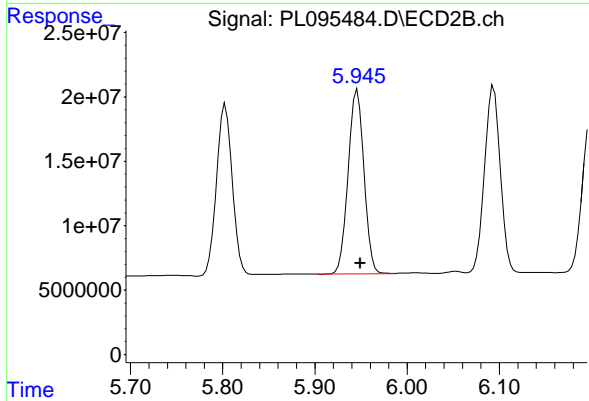
#15 Endosulfan II

R.T.: 6.094 min  
 Delta R.T.: -0.003 min  
 Response: 172329700  
 Conc: 47.99 ng/ml



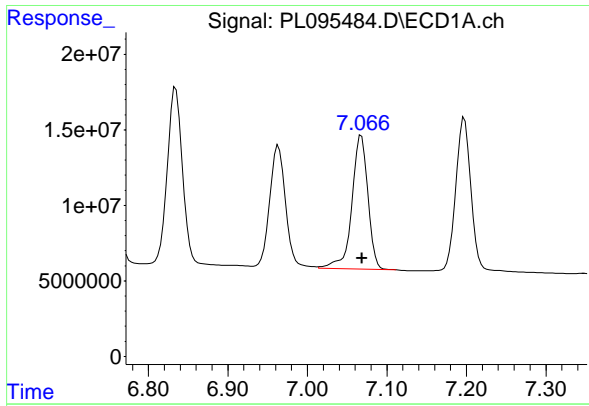
#16 4,4'-DDD

R.T.: 6.753 min  
 Delta R.T.: 0.000 min  
 Response: 151750435  
 Conc: 53.60 ng/ml



#16 4,4'-DDD

R.T.: 5.946 min  
 Delta R.T.: -0.003 min  
 Response: 170702875  
 Conc: 52.25 ng/ml



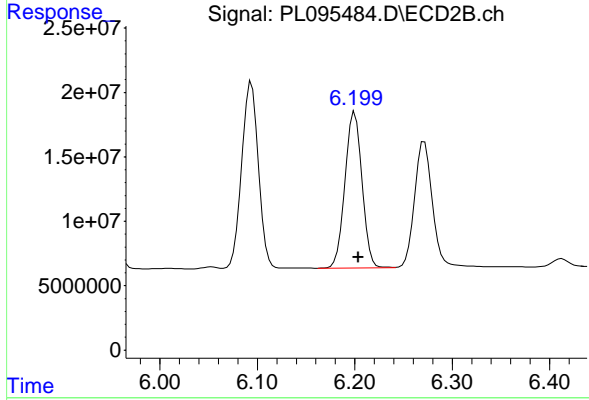
#17 4,4' -DDT

R.T.: 7.068 min  
 Delta R.T.: 0.000 min  
 Response: 124004031  
 Conc: 43.53 ng/ml

Instrument : ECD\_L  
 ClientSampleId : PSTDCCC050

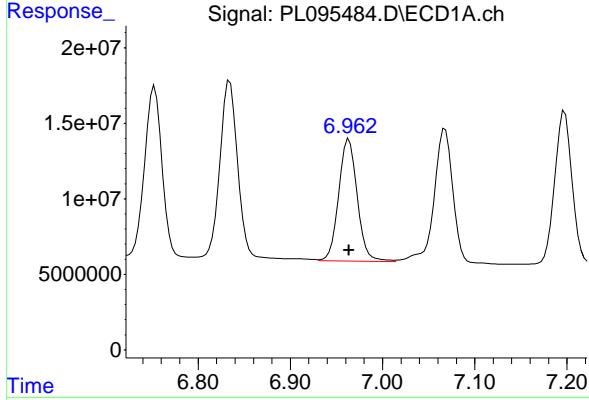
Manual Integrations  
 APPROVED

Reviewed By :Abdul Mirza 04/30/2025  
 Supervised By :mohammad ahmed 05/02/2025



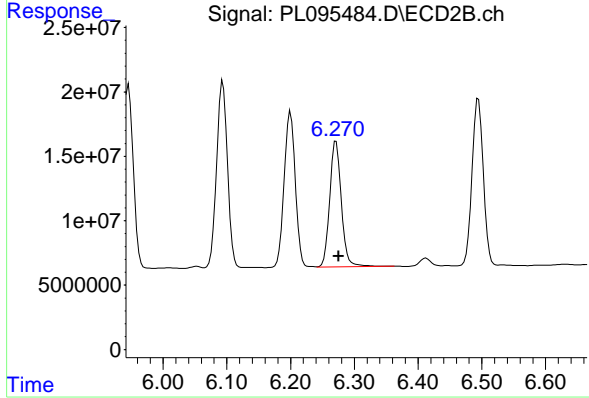
#17 4,4' -DDT

R.T.: 6.200 min  
 Delta R.T.: -0.004 min  
 Response: 147037740  
 Conc: 42.79 ng/ml



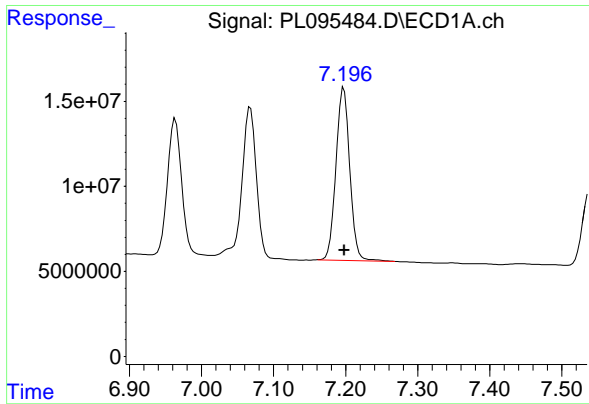
#18 Endrin aldehyde

R.T.: 6.964 min  
 Delta R.T.: 0.000 min  
 Response: 113078503  
 Conc: 48.72 ng/ml



#18 Endrin aldehyde

R.T.: 6.271 min  
 Delta R.T.: -0.004 min  
 Response: 124606844  
 Conc: 47.68 ng/ml



#19 Endosulfan Sulfate

R.T.: 7.197 min  
 Delta R.T.: 0.000 min  
 Response: 134083614  
 Conc: 47.86 ng/ml

Instrument :

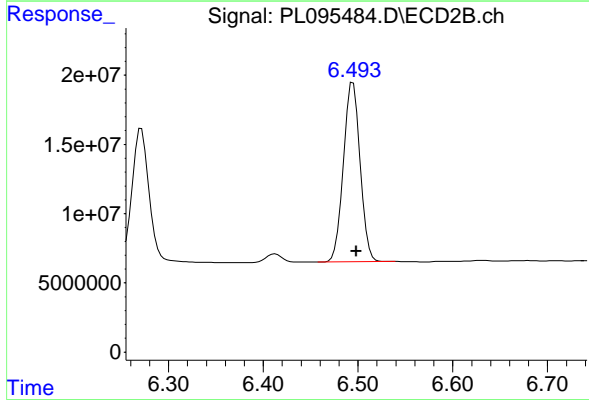
ECD\_L

ClientSampleId :

PSTDCCC050

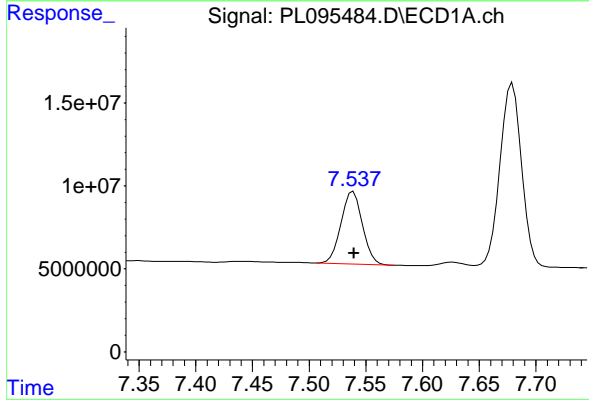
Manual Integrations  
**APPROVED**

Reviewed By :Abdul Mirza 04/30/2025  
 Supervised By :mohammad ahmed 05/02/2025



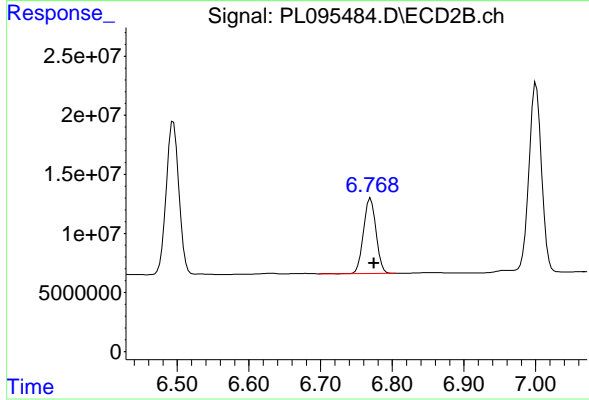
#19 Endosulfan Sulfate

R.T.: 6.495 min  
 Delta R.T.: -0.004 min  
 Response: 158621350  
 Conc: 47.81 ng/ml



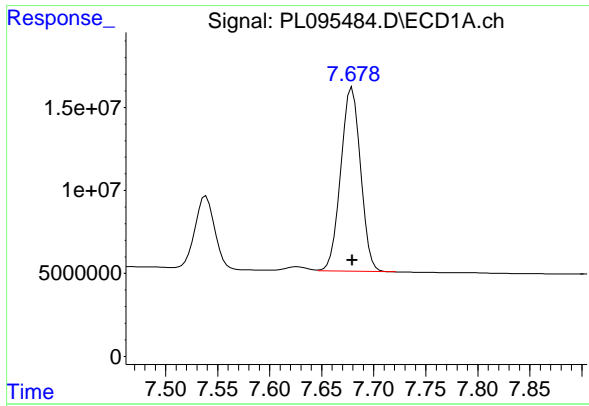
#20 Methoxychlor

R.T.: 7.539 min  
 Delta R.T.: 0.000 min  
 Response: 57135811  
 Conc: 40.95 ng/ml



#20 Methoxychlor

R.T.: 6.770 min  
 Delta R.T.: -0.005 min  
 Response: 77808827  
 Conc: 40.79 ng/ml



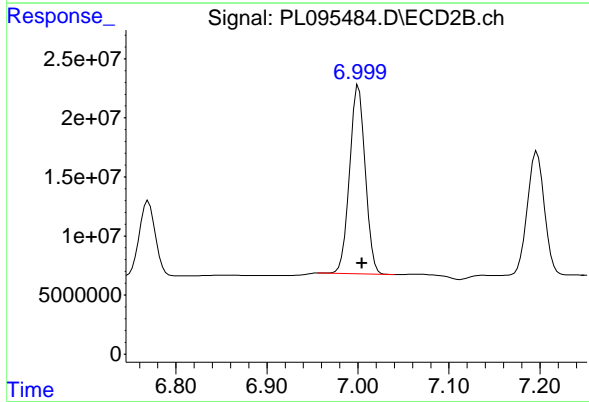
#21 Endrin ketone

R.T.: 7.679 min  
 Delta R.T.: 0.000 min  
 Response: 146780804  
 Conc: 51.49 ng/ml

Instrument :  
 ECD\_L  
 ClientSampleId :  
 PSTDCCC050

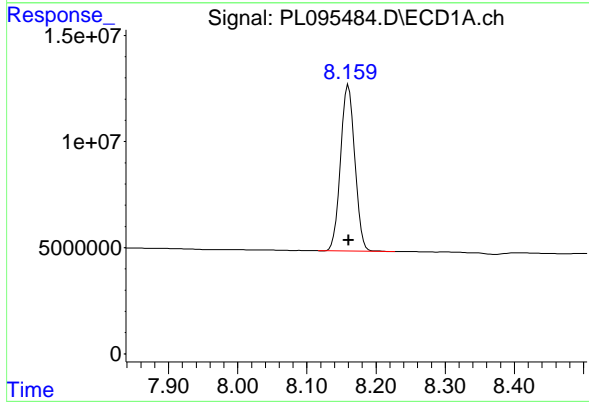
Manual Integrations  
 APPROVED

Reviewed By :Abdul Mirza 04/30/2025  
 Supervised By :mohammad ahmed 05/02/2025



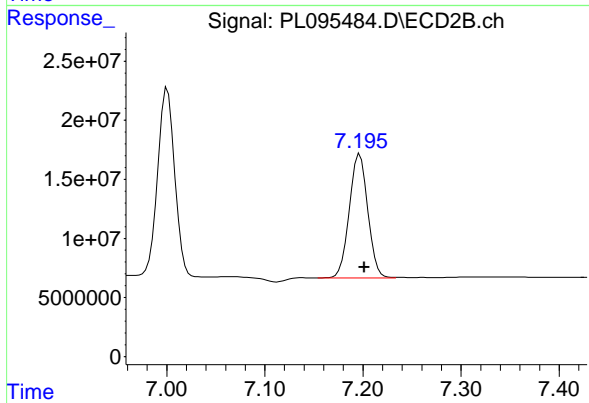
#21 Endrin ketone

R.T.: 7.001 min  
 Delta R.T.: -0.004 min  
 Response: 191486470  
 Conc: 54.38 ng/ml



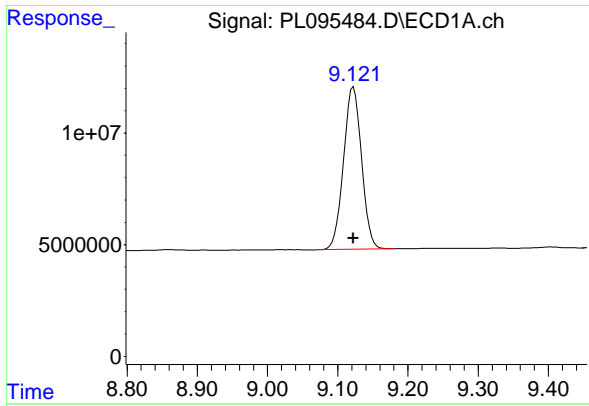
#22 Mirex

R.T.: 8.160 min  
 Delta R.T.: 0.000 min  
 Response: 112371445  
 Conc: 47.29 ng/ml



#22 Mirex

R.T.: 7.195 min  
 Delta R.T.: -0.006 min  
 Response: 137221916  
 Conc: 47.61 ng/ml m



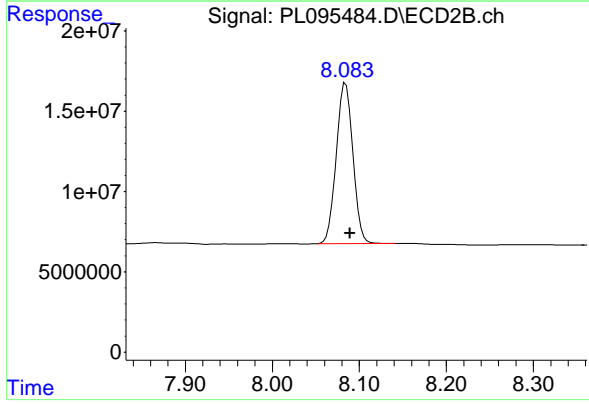
#28 Decachlorobiphenyl

R.T.: 9.122 min  
 Delta R.T.: 0.000 min  
 Response: 129649785  
 Conc: 46.79 ng/ml

Instrument :  
 ECD\_L  
 ClientSampleId :  
 PSTDCCC050

Manual Integrations  
 APPROVED

Reviewed By :Abdul Mirza 04/30/2025  
 Supervised By :mohammad ahmed 05/02/2025



#28 Decachlorobiphenyl

R.T.: 8.084 min  
 Delta R.T.: -0.005 min  
 Response: 133401202  
 Conc: 45.08 ng/ml