

Data Path : Z:\pestpcbsrv\HPCHEM1\ECD\_L\Data\PL043025\  
 Data File : PL095443.D  
 Signal(s) : Signal #1: ECD1A.ch Signal #2: ECD2B.ch  
 Acq On : 28 Apr 2025 17:08  
 Operator : AR\AJ  
 Sample : Q1889-01  
 Misc :  
 ALS Vial : 7 Sample Multiplier: 1

Instrument :  
 ECD\_L  
 ClientSampleId :  
 COMP-1

Integration File signal 1: autoint1.e  
 Integration File signal 2: autoint2.e  
 Quant Time: Apr 29 01:35:36 2025  
 Quant Method : Z:\pestpcbsrv\HPCHEM1\ECD\_L\methods\PL042325.M  
 Quant Title : GC Extractables  
 QLast Update : Wed Apr 23 16:23:18 2025  
 Response via : Initial Calibration  
 Integrator: ChemStation

Volume Inj. : 1 µl  
 Signal #1 Phase : ZB-MR1 Signal #2 Phase: ZB-MR2  
 Signal #1 Info : 30M x 0.32mm x0.5 Signal #2 Info : 30M x 0.32mm x0.25µm

Compound	RT#1	RT#2	Resp#1	Resp#2	ng/ml	ng/ml
-----						
System Monitoring Compounds						
1) SA Tetrachlo...	3.595	2.901	61792353	59561581	18.928	18.732
28) SA Decachlor...	9.119	8.082	51911558	55100662	18.735	18.620

Target Compounds

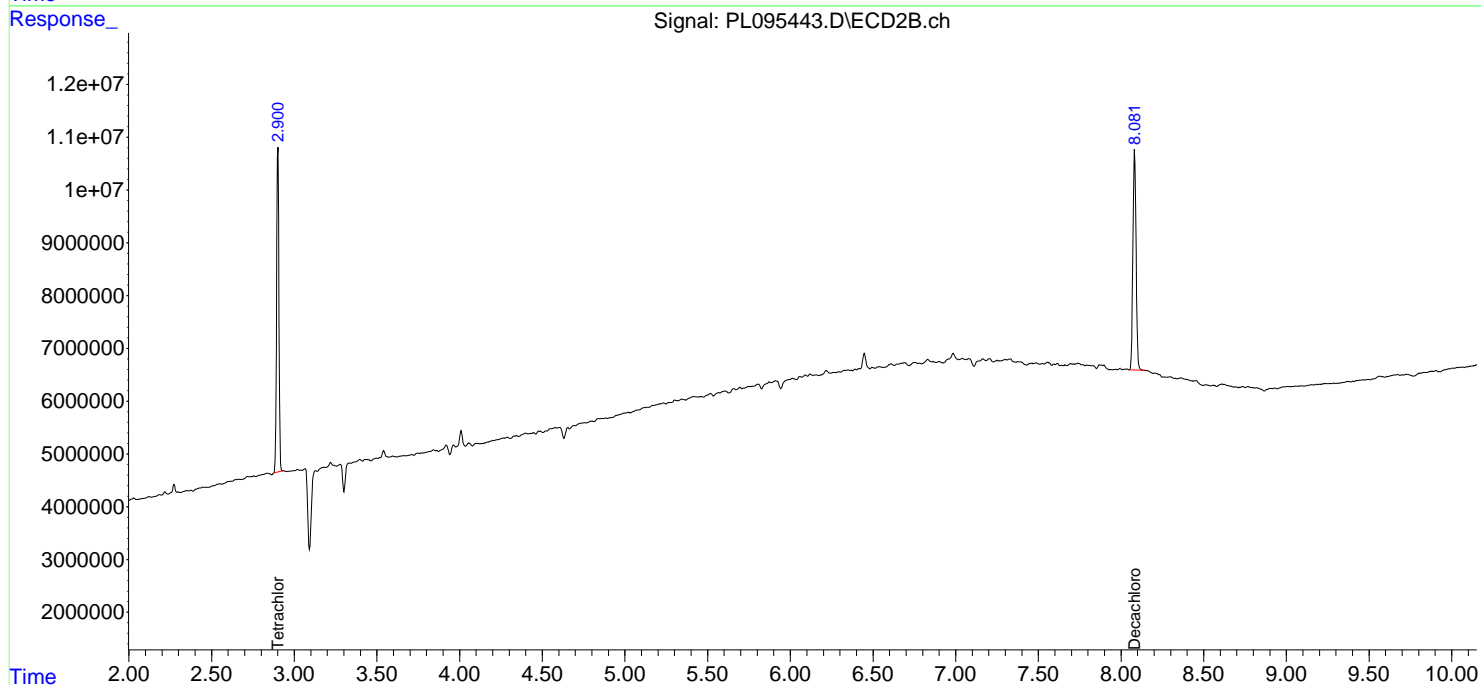
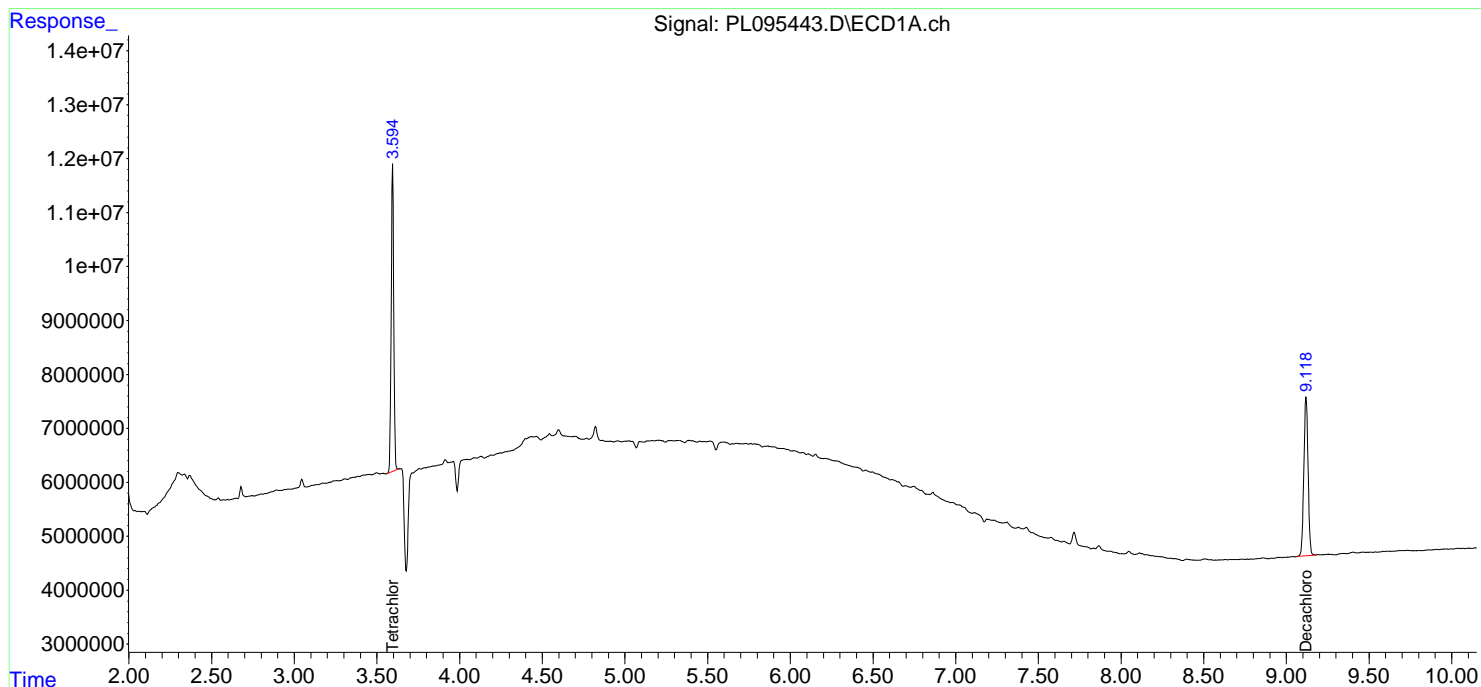
(f)=RT Delta > 1/2 Window (#)=Amounts differ by > 25% (m)=manual int.

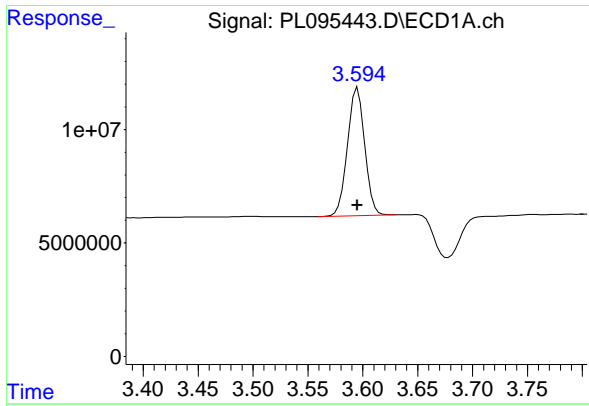
Data Path : Z:\pestpcbsrv\HPCHEM1\ECD\_L\Data\PL043025\  
Data File : PL095443.D  
Signal(s) : Signal #1: ECD1A.ch Signal #2: ECD2B.ch  
Acq On : 28 Apr 2025 17:08  
Operator : AR\AJ  
Sample : Q1889-01  
Misc :  
ALS Vial : 7 Sample Multiplier: 1

Instrument :  
ECD\_L  
ClientSampleId :  
COMP-1

Integration File signal 1: autoint1.e  
Integration File signal 2: autoint2.e  
Quant Time: Apr 29 01:35:36 2025  
Quant Method : Z:\pestpcbsrv\HPCHEM1\ECD\_L\methods\PL042325.M  
Quant Title : GC Extractables  
QLast Update : Wed Apr 23 16:23:18 2025  
Response via : Initial Calibration  
Integrator: ChemStation

Volume Inj. : 1 µl  
Signal #1 Phase : ZB-MR1 Signal #2 Phase: ZB-MR2  
Signal #1 Info : 30M x 0.32mm x0.5 Signal #2 Info : 30M x 0.32mm x0.25µm

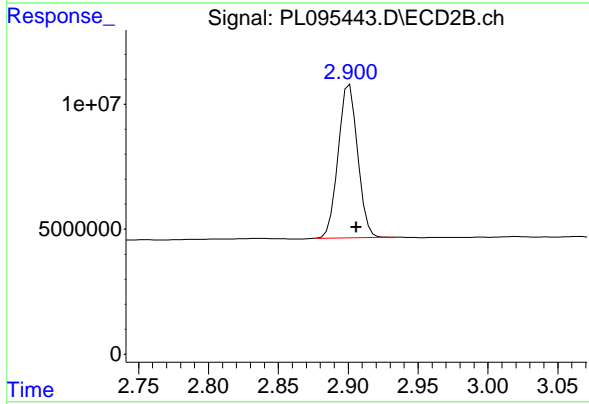




#1 Tetrachloro-m-xylene

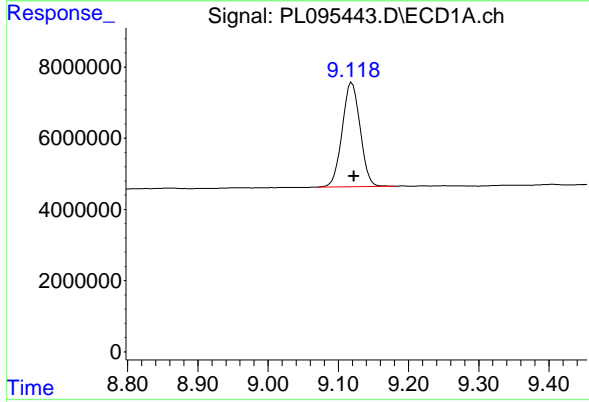
R.T.: 3.595 min  
 Delta R.T.: 0.000 min  
 Response: 61792353  
 Conc: 18.93 ng/ml

Instrument :  
 ECD\_L  
 ClientSampleId :  
 COMP-1



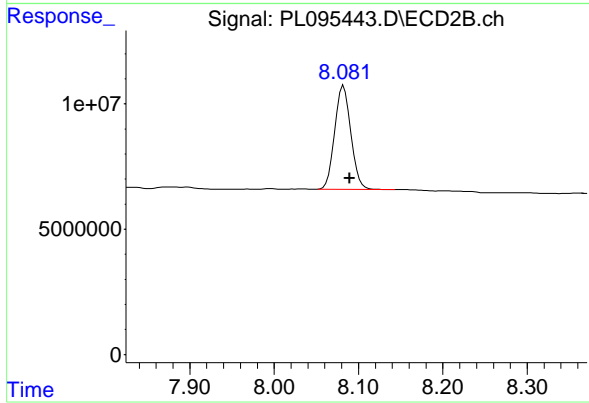
#1 Tetrachloro-m-xylene

R.T.: 2.901 min  
 Delta R.T.: -0.005 min  
 Response: 59561581  
 Conc: 18.73 ng/ml



#28 Decachlorobiphenyl

R.T.: 9.119 min  
 Delta R.T.: -0.003 min  
 Response: 51911558  
 Conc: 18.74 ng/ml



#28 Decachlorobiphenyl

R.T.: 8.082 min  
 Delta R.T.: -0.007 min  
 Response: 55100662  
 Conc: 18.62 ng/ml