

Data Path : Z:\pestpcbsrv\HPCHEM1\ECD_L\Data\PL043025\
 Data File : PL095447.D
 Signal(s) : Signal #1: ECD1A.ch Signal #2: ECD2B.ch
 Acq On : 28 Apr 2025 18:03
 Operator : AR\AJ
 Sample : Q1889-03
 Misc :
 ALS Vial : 11 Sample Multiplier: 1

Instrument :
 ECD_L
ClientSampleId :
 COMP-3

Manual Integrations
APPROVED
 Reviewed By :Abdul Mirza 04/29/2025
 Supervised By :mohammad ahmed 05/02/2025

Integration File signal 1: autoint1.e
 Integration File signal 2: autoint2.e
 Quant Time: Apr 29 01:36:11 2025
 Quant Method : Z:\pestpcbsrv\HPCHEM1\ECD_L\methods\PL042325.M
 Quant Title : GC Extractables
 QLast Update : Wed Apr 23 16:23:18 2025
 Response via : Initial Calibration
 Integrator: ChemStation

Volume Inj. : 1 µl
 Signal #1 Phase : ZB-MR1 Signal #2 Phase: ZB-MR2
 Signal #1 Info : 30M x 0.32mm x0.5 Signal #2 Info : 30M x 0.32mm x0.25µm

Compound	RT#1	RT#2	Resp#1	Resp#2	ng/ml	ng/ml

System Monitoring Compounds						
1) SA Tetrachlo...	3.592	2.903	65310827	65298319	20.005	20.536
28) SA Decachlor...	9.115	8.080	59524888	64845440	21.483	21.913m

Target Compounds

(f)=RT Delta > 1/2 Window (#)=Amounts differ by > 25% (m)=manual int.

Data Path : Z:\pestpcbsrv\HPCHEM1\ECD_L\Data\PL043025\
 Data File : PL095447.D
 Signal(s) : Signal #1: ECD1A.ch Signal #2: ECD2B.ch
 Acq On : 28 Apr 2025 18:03
 Operator : AR\AJ
 Sample : Q1889-03
 Misc :
 ALS Vial : 11 Sample Multiplier: 1

Instrument :

ECD_L

ClientSampleId :

COMP-3

Manual Integrations

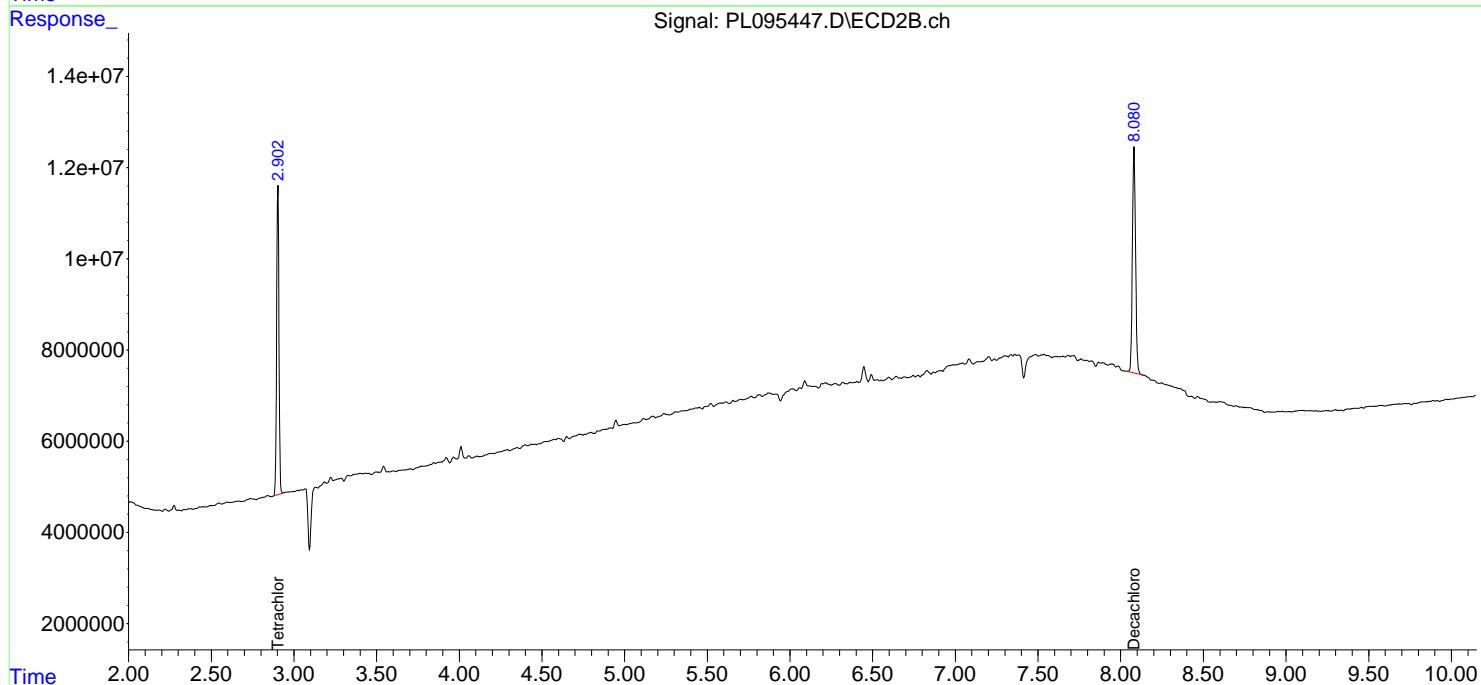
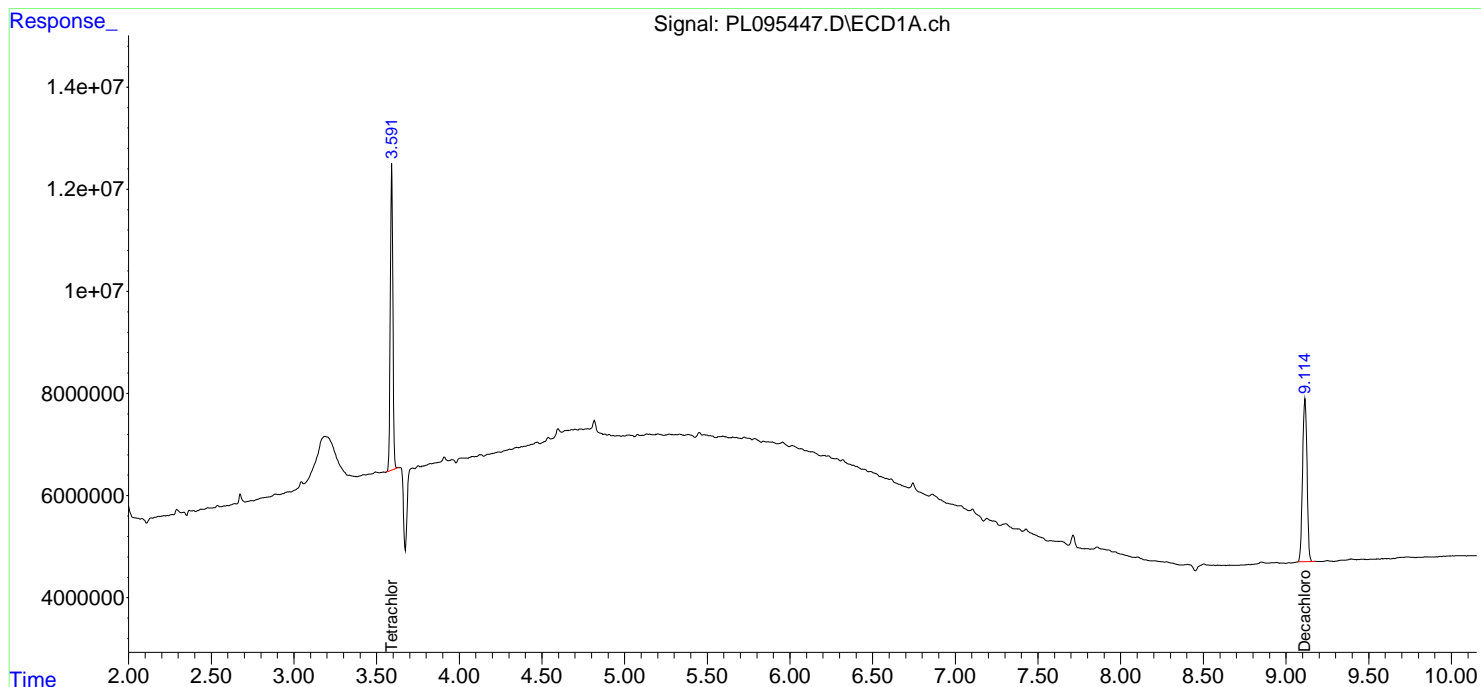
APPROVED

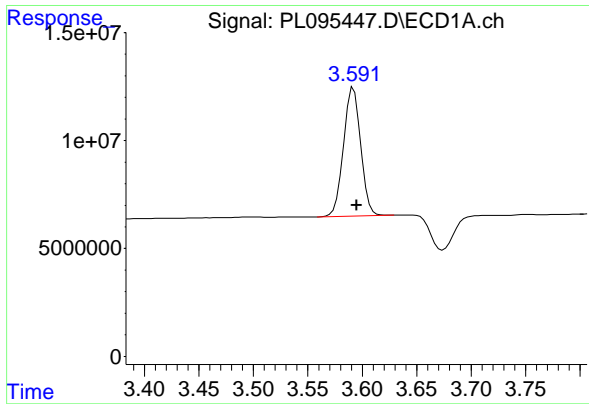
Reviewed By :Abdul Mirza 04/29/2025

Supervised By :mohammad ahmed 05/02/2025

Integration File signal 1: autoint1.e
 Integration File signal 2: autoint2.e
 Quant Time: Apr 29 01:36:11 2025
 Quant Method : Z:\pestpcbsrv\HPCHEM1\ECD_L\methods\PL042325.M
 Quant Title : GC Extractables
 QLast Update : Wed Apr 23 16:23:18 2025
 Response via : Initial Calibration
 Integrator: ChemStation

Volume Inj. : 1 µl
 Signal #1 Phase : ZB-MR1 Signal #2 Phase: ZB-MR2
 Signal #1 Info : 30M x 0.32mm x0.5 Signal #2 Info : 30M x 0.32mm x0.25µm





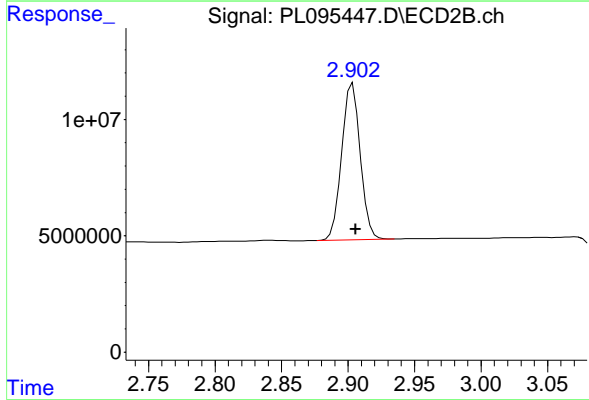
#1 Tetrachloro-m-xylene

R.T.: 3.592 min
 Delta R.T.: -0.003 min
 Response: 65310827
 Conc: 20.01 ng/ml

Instrument : ECD_L
 Client Sample Id : COMP-3

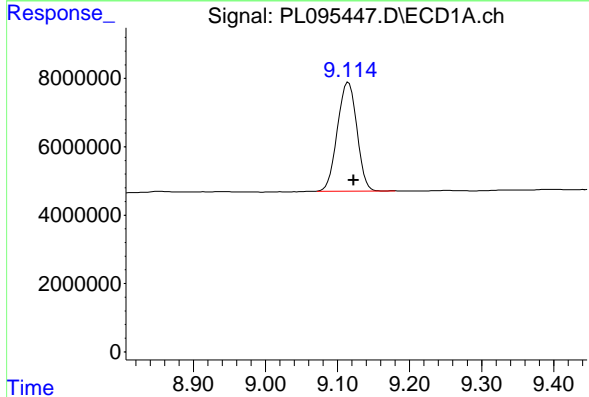
Manual Integrations
 APPROVED

Reviewed By :Abdul Mirza 04/29/2025
 Supervised By :mohammad ahmed 05/02/2025



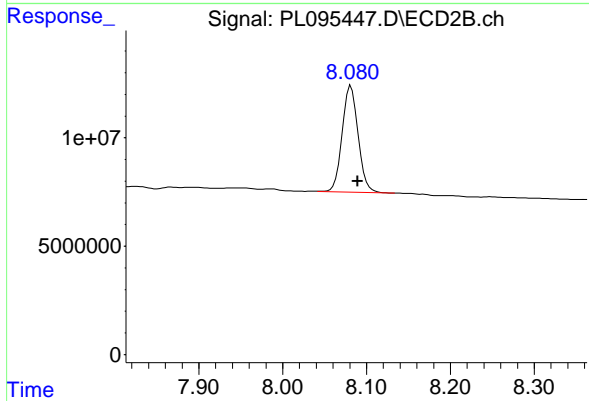
#1 Tetrachloro-m-xylene

R.T.: 2.903 min
 Delta R.T.: -0.002 min
 Response: 65298319
 Conc: 20.54 ng/ml



#28 Decachlorobiphenyl

R.T.: 9.115 min
 Delta R.T.: -0.007 min
 Response: 59524888
 Conc: 21.48 ng/ml



#28 Decachlorobiphenyl

R.T.: 8.080 min
 Delta R.T.: -0.009 min
 Response: 64845440
 Conc: 21.91 ng/ml m