

Data Path : Z:\pestpcbsrv\HPCHEM1\ECD\_L\Data\PL043025\  
 Data File : PL095444.D  
 Signal(s) : Signal #1: ECD1A.ch Signal #2: ECD2B.ch  
 Acq On : 28 Apr 2025 17:22  
 Operator : AR\AJ  
 Sample : Q1889-01MS  
 Misc :  
 ALS Vial : 8 Sample Multiplier: 1

Instrument :  
 ECD\_L  
 ClientSampleId :  
 COMP-1MS

Integration File signal 1: autoint1.e  
 Integration File signal 2: autoint2.e  
 Quant Time: Apr 29 01:35:42 2025  
 Quant Method : Z:\pestpcbsrv\HPCHEM1\ECD\_L\methods\PL042325.M  
 Quant Title : GC Extractables  
 QLast Update : Wed Apr 23 16:23:18 2025  
 Response via : Initial Calibration  
 Integrator: ChemStation

Volume Inj. : 1 µl  
 Signal #1 Phase : ZB-MR2 Signal #2 Phase: ZB-MR2  
 Signal #1 Info : 30M x 0.32mm x0.5 Signal #2 Info : 30M x 0.32mm x0.25µm

	Compound	RT#1	RT#2	Resp#1	Resp#2	ng/ml	ng/ml
-----							
System Monitoring Compounds							
1)	SA Tetrachlo...	3.593	2.904	59045523	58664256	18.086	18.449
28)	SA Decachlor...	9.115	8.082	48789481	53068359	17.608	17.933
Target Compounds							
2)	A alpha-BHC	4.043	3.413	246.4E6	232.2E6	49.731	52.189
3)	MA gamma-BHC...	4.374	3.747	237.2E6	225.1E6	50.099	51.179
4)	MA Heptachlor	4.972	4.100	222.0E6	213.7E6	48.530	49.049
5)	MB Aldrin	5.314	4.386	228.4E6	207.1E6	49.732	50.326
6)	B beta-BHC	4.560	4.040	100.8E6	105.7E6	48.744	50.919
7)	B delta-BHC	0.000	4.276	0	222.9E6	N.D.	50.876 #
8)	Heptachlo...	5.735	4.888	204.8E6	193.1E6	51.141	49.986
9)	A Endosulfan I	6.117	5.261	197.6E6	184.7E6	52.026	50.470
10)	B gamma-Chl...	5.989	5.141	213.4E6	202.3E6	52.305	49.910
11)	B alpha-Chl...	6.070	5.205	210.1E6	199.1E6	51.676	50.023
12)	B 4,4'-DDE	6.238	5.391	204.5E6	201.5E6	52.160	49.548
13)	MA Dieldrin	6.391	5.526	202.9E6	200.6E6	52.642	49.313
14)	MA Endrin	6.618	5.801	167.3E6	176.4E6	52.522	48.465
15)	B Endosulfa...	6.830	6.091	174.4E6	185.3E6	54.630	51.603
16)	A 4,4'-DDD	6.748	5.943	162.0E6	164.7E6	57.240	50.418
17)	MA 4,4'-DDT	7.063	6.198	150.1E6	168.1E6	52.684	48.909
18)	B Endrin al...	6.960	6.269	123.4E6	131.5E6	53.168	50.311
19)	B Endosulfa...	7.193	6.493	149.2E6	164.0E6	53.264	49.433
20)	A Methoxychlor	7.535	6.768	70476694	90353671	50.516	47.369
21)	B Endrin ke...	7.674	6.998	154.8E6	198.0E6	54.283	56.235
22)	Mirex	8.155	7.194	125.3E6	155.5E6	52.733	53.939
24)	Chlordane-2	5.314f	0.000	228.4E6	0	1078.903	N.D. #
25)	Chlordane-3	5.989	5.141	213.4E6	202.3E6	273.928	391.524 #
26)	Chlordane-4	6.070	5.205	210.1E6	199.1E6	222.836	458.213 #
27)	Chlordane-5	0.000	6.091	0	185.3E6	N.D.	1003.108 #

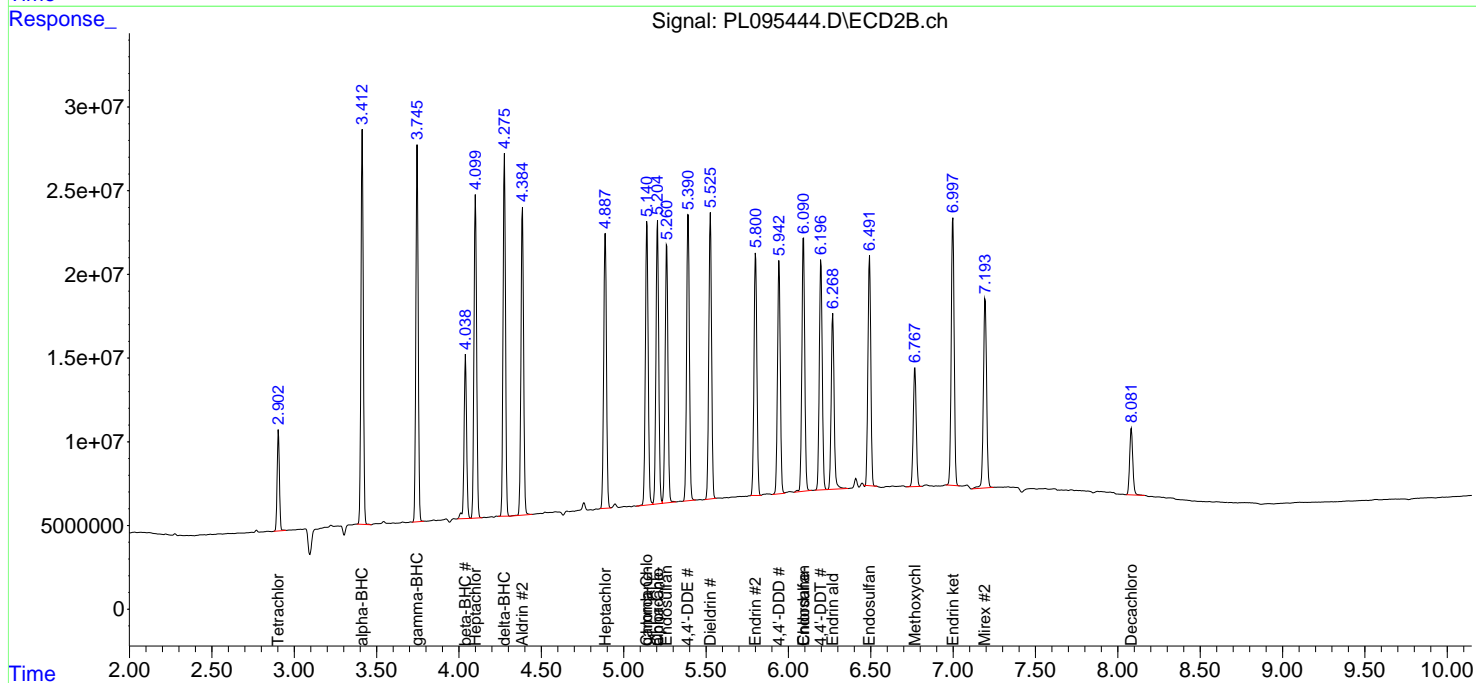
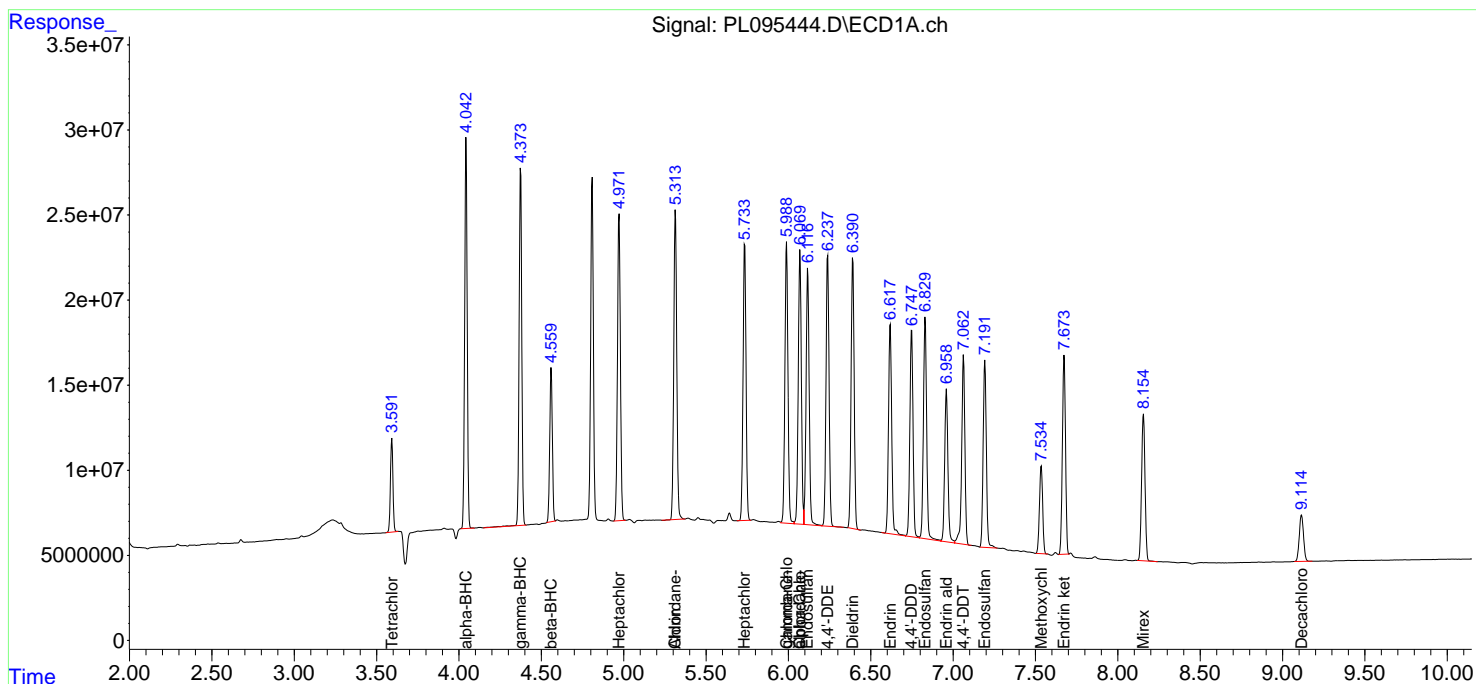
(f)=RT Delta > 1/2 Window (#)=Amounts differ by > 25% (m)=manual int.

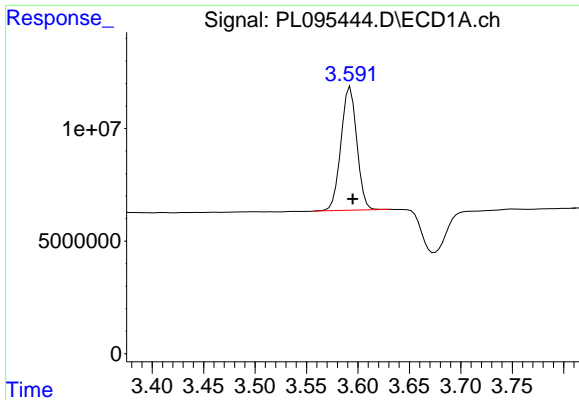
Data Path : Z:\pestpcbsrv\HPCHEM1\ECD\_L\Data\PL043025\  
 Data File : PL095444.D  
 Signal(s) : Signal #1: ECD1A.ch Signal #2: ECD2B.ch  
 Acq On : 28 Apr 2025 17:22  
 Operator : AR\AJ  
 Sample : Q1889-01MS  
 Misc :  
 ALS Vial : 8 Sample Multiplier: 1

Instrument :  
 ECD\_L  
 ClientSampleId :  
 COMP-1MS

Integration File signal 1: autoint1.e  
 Integration File signal 2: autoint2.e  
 Quant Time: Apr 29 01:35:42 2025  
 Quant Method : Z:\pestpcbsrv\HPCHEM1\ECD\_L\methods\PL042325.M  
 Quant Title : GC Extractables  
 QLast Update : Wed Apr 23 16:23:18 2025  
 Response via : Initial Calibration  
 Integrator: ChemStation

Volume Inj. : 1 µl  
 Signal #1 Phase : ZB-MR1 Signal #2 Phase: ZB-MR2  
 Signal #1 Info : 30M x 0.32mm x0.5 Signal #2 Info : 30M x 0.32mm x0.25µm

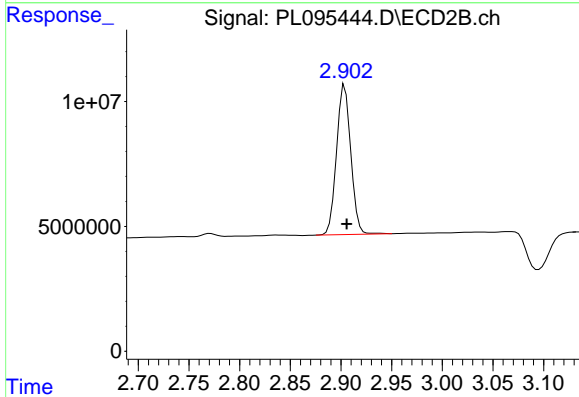




#1 Tetrachloro-m-xylene

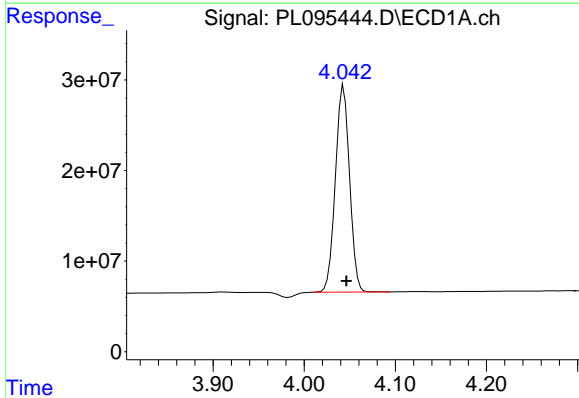
R.T.: 3.593 min  
 Delta R.T.: -0.002 min  
 Response: 59045523  
 Conc: 18.09 ng/ml

Instrument :  
 ECD\_L  
 ClientSampleId :  
 COMP-1MS



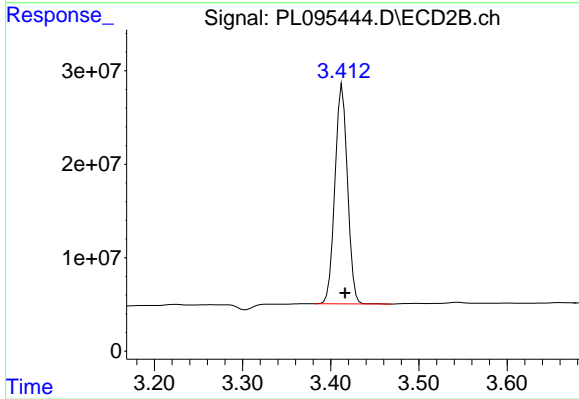
#1 Tetrachloro-m-xylene

R.T.: 2.904 min  
 Delta R.T.: -0.002 min  
 Response: 58664256  
 Conc: 18.45 ng/ml



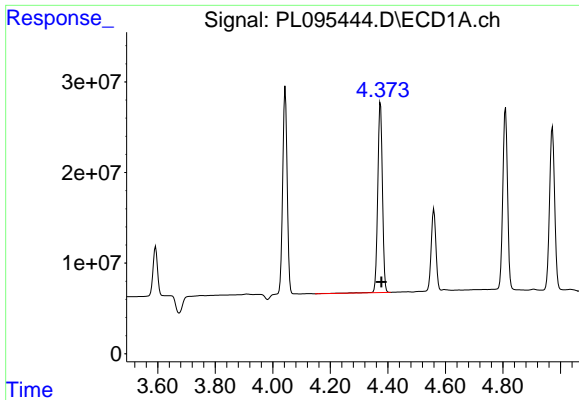
#2 alpha-BHC

R.T.: 4.043 min  
 Delta R.T.: -0.003 min  
 Response: 246353848  
 Conc: 49.73 ng/ml



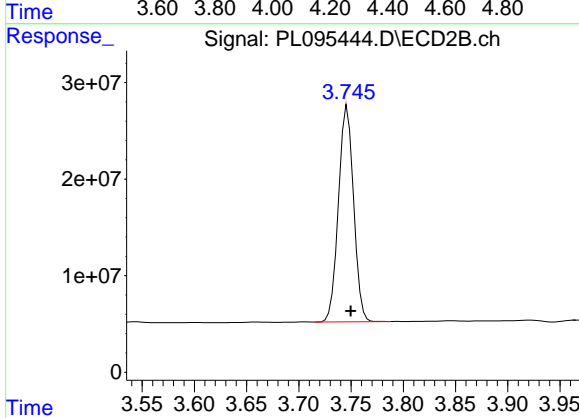
#2 alpha-BHC

R.T.: 3.413 min  
 Delta R.T.: -0.003 min  
 Response: 232176269  
 Conc: 52.19 ng/ml

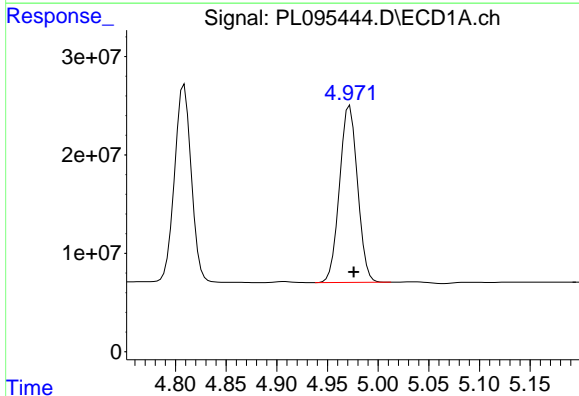


#3 gamma-BHC (Lindane)  
R.T.: 4.374 min  
Delta R.T.: -0.003 min  
Response: 237166328  
Conc: 50.10 ng/ml

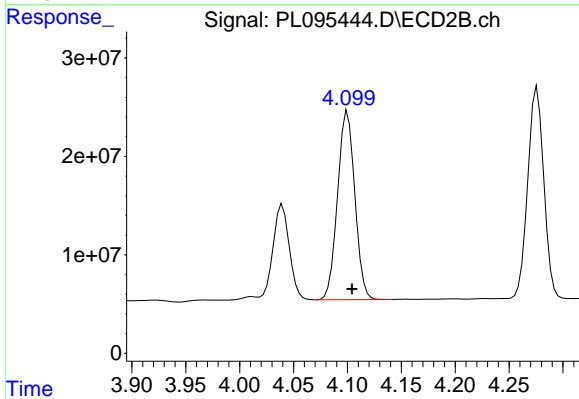
Instrument :  
ECD\_L  
ClientSampleId :  
COMP-1MS



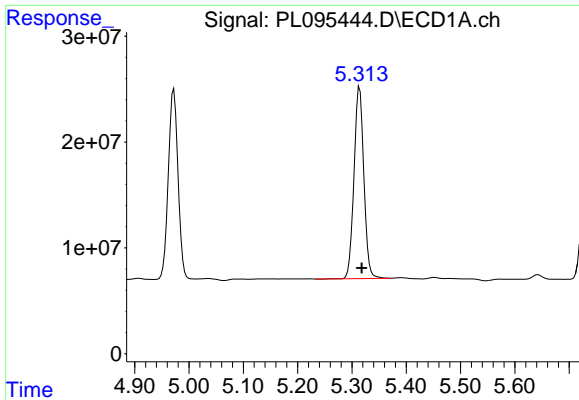
#3 gamma-BHC (Lindane)  
R.T.: 3.747 min  
Delta R.T.: -0.003 min  
Response: 225096372  
Conc: 51.18 ng/ml



#4 Heptachlor  
R.T.: 4.972 min  
Delta R.T.: -0.004 min  
Response: 221999339  
Conc: 48.53 ng/ml

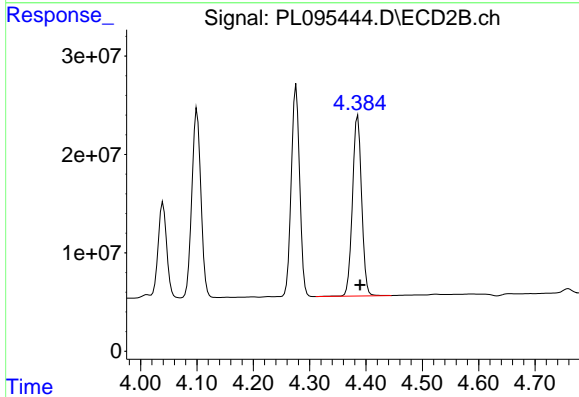


#4 Heptachlor  
R.T.: 4.100 min  
Delta R.T.: -0.004 min  
Response: 213690746  
Conc: 49.05 ng/ml

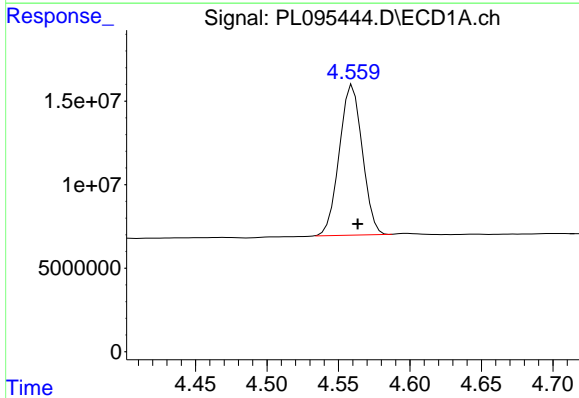


#5 Aldrin  
 R.T.: 5.314 min  
 Delta R.T.: -0.004 min  
 Response: 228420785  
 Conc: 49.73 ng/ml

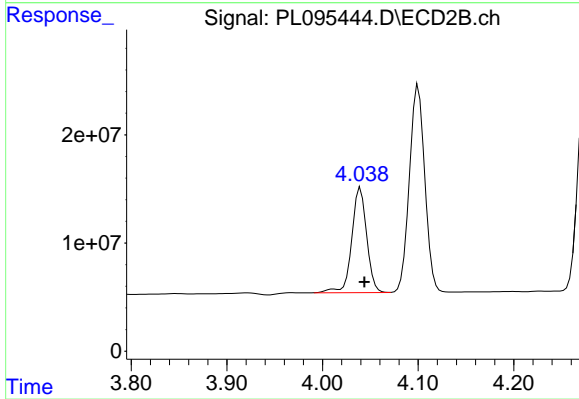
Instrument :  
 ECD\_L  
 ClientSampleId :  
 COMP-1MS



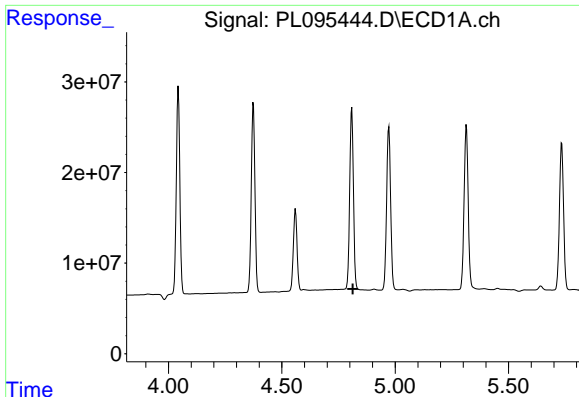
#5 Aldrin  
 R.T.: 4.386 min  
 Delta R.T.: -0.004 min  
 Response: 207127485  
 Conc: 50.33 ng/ml



#6 beta-BHC  
 R.T.: 4.560 min  
 Delta R.T.: -0.004 min  
 Response: 100778322  
 Conc: 48.74 ng/ml



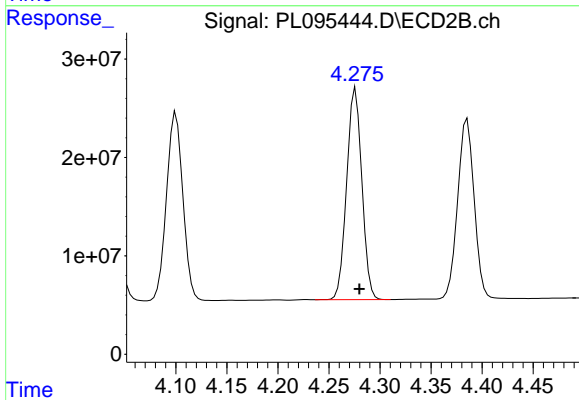
#6 beta-BHC  
 R.T.: 4.040 min  
 Delta R.T.: -0.004 min  
 Response: 105700809  
 Conc: 50.92 ng/ml



#7 delta-BHC

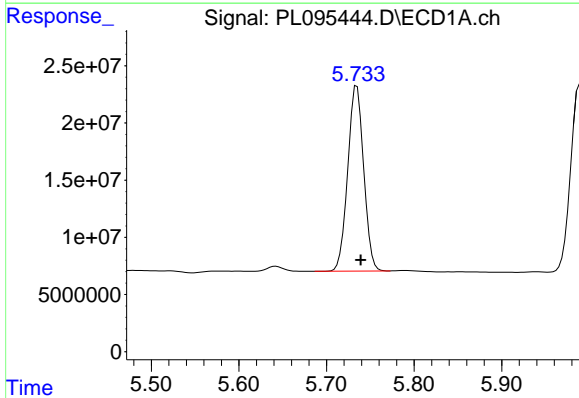
R.T.: 0.000 min  
 Exp R.T.: 4.812 min  
 Response: 0  
 Conc: N.D.

Instrument :  
 ECD\_L  
 ClientSampleId :  
 COMP-1MS



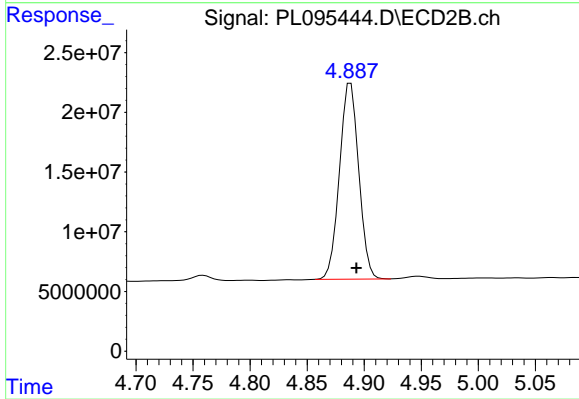
#7 delta-BHC

R.T.: 4.276 min  
 Delta R.T.: -0.004 min  
 Response: 222937632  
 Conc: 50.88 ng/ml



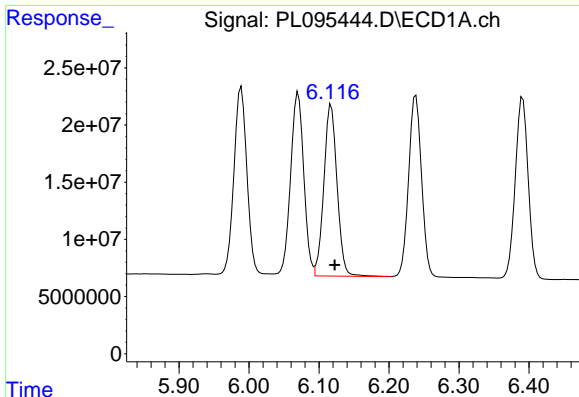
#8 Heptachlor epoxide

R.T.: 5.735 min  
 Delta R.T.: -0.004 min  
 Response: 204828759  
 Conc: 51.14 ng/ml



#8 Heptachlor epoxide

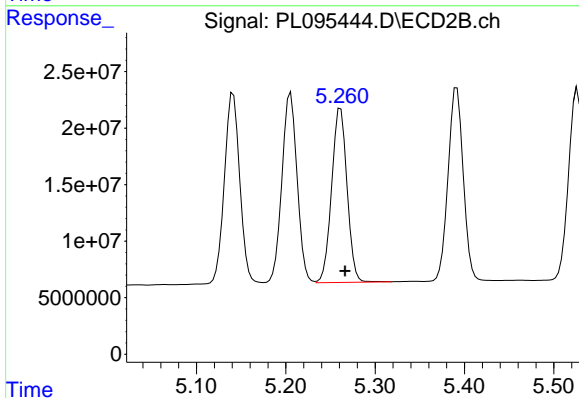
R.T.: 4.888 min  
 Delta R.T.: -0.005 min  
 Response: 193077876  
 Conc: 49.99 ng/ml



#9 Endosulfan I

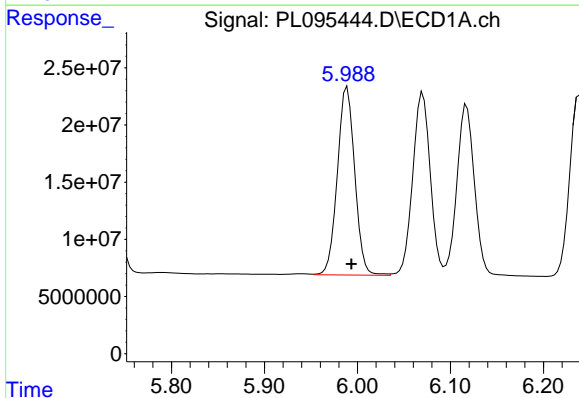
R.T.: 6.117 min  
 Delta R.T.: -0.005 min  
 Response: 197567431  
 Conc: 52.03 ng/ml

Instrument :  
 ECD\_L  
 ClientSampleId :  
 COMP-1MS



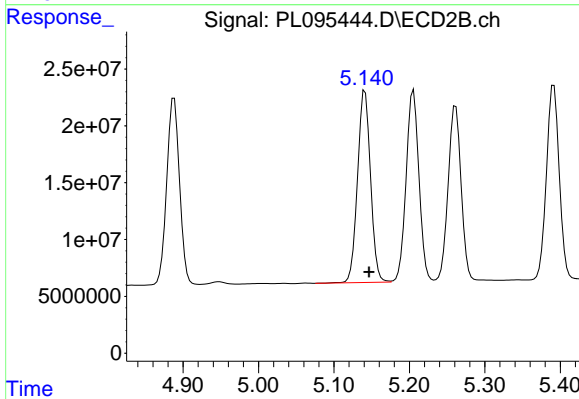
#9 Endosulfan I

R.T.: 5.261 min  
 Delta R.T.: -0.005 min  
 Response: 184742608  
 Conc: 50.47 ng/ml



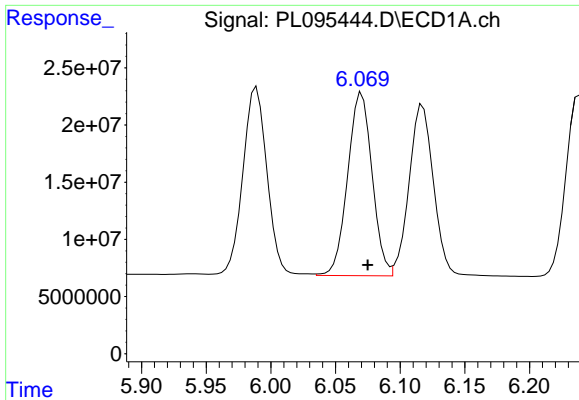
#10 gamma-Chlordane

R.T.: 5.989 min  
 Delta R.T.: -0.005 min  
 Response: 213369924  
 Conc: 52.30 ng/ml



#10 gamma-Chlordane

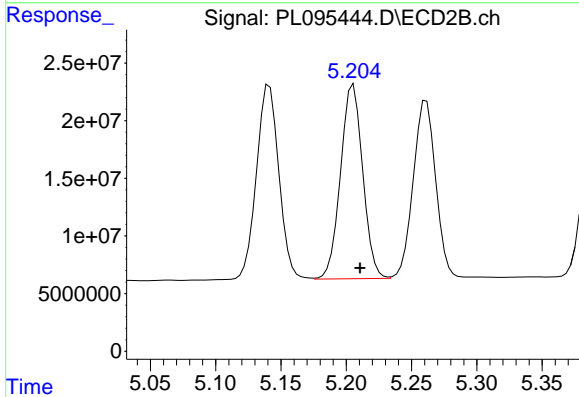
R.T.: 5.141 min  
 Delta R.T.: -0.005 min  
 Response: 202269991  
 Conc: 49.91 ng/ml



#11 alpha-Chlordane

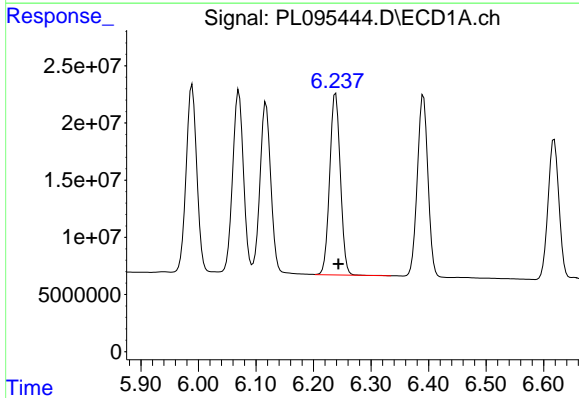
R.T.: 6.070 min  
 Delta R.T.: -0.004 min  
 Response: 210118144  
 Conc: 51.68 ng/ml

Instrument :  
 ECD\_L  
 ClientSampleId :  
 COMP-1MS



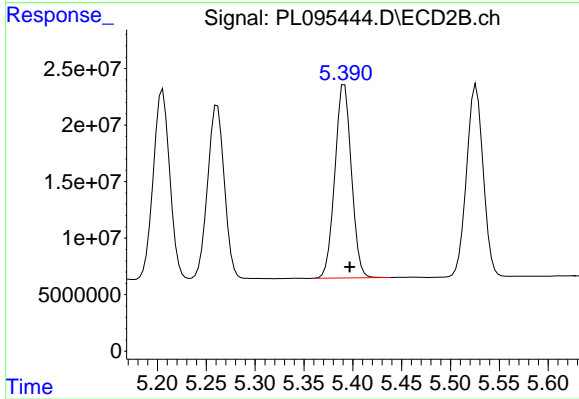
#11 alpha-Chlordane

R.T.: 5.205 min  
 Delta R.T.: -0.005 min  
 Response: 199144814  
 Conc: 50.02 ng/ml



#12 4,4'-DDE

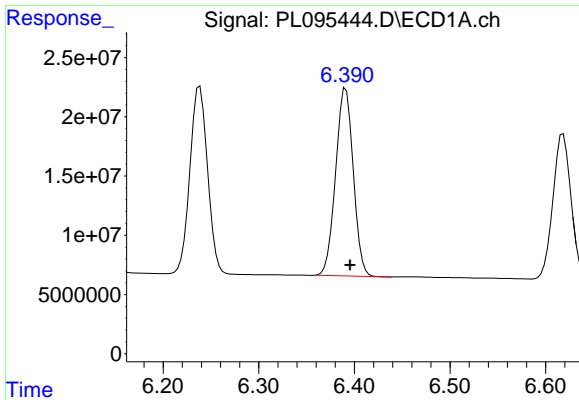
R.T.: 6.238 min  
 Delta R.T.: -0.005 min  
 Response: 204496016  
 Conc: 52.16 ng/ml



#12 4,4'-DDE

R.T.: 5.391 min  
 Delta R.T.: -0.005 min  
 Response: 201510459  
 Conc: 49.55 ng/ml

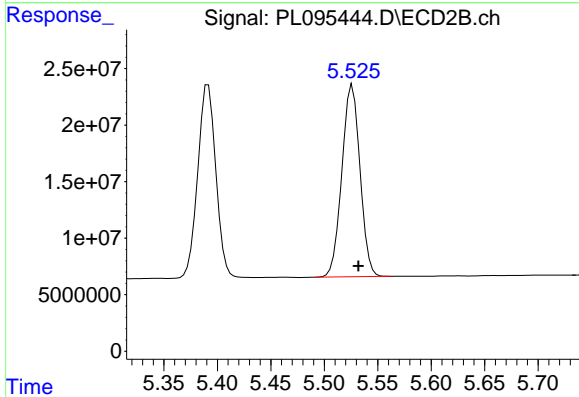




#13 Dieldrin

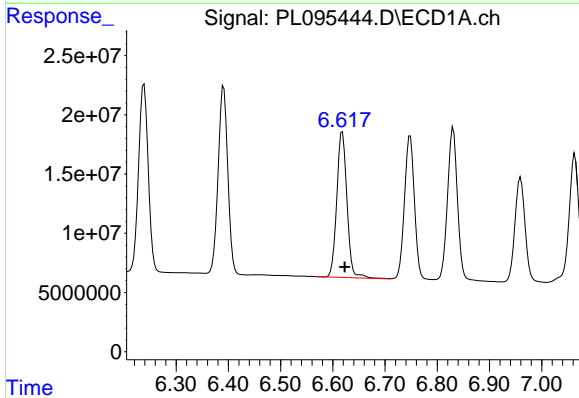
R.T.: 6.391 min  
 Delta R.T.: -0.004 min  
 Response: 202923413  
 Conc: 52.64 ng/ml

Instrument :  
 ECD\_L  
 ClientSampleId :  
 COMP-1MS



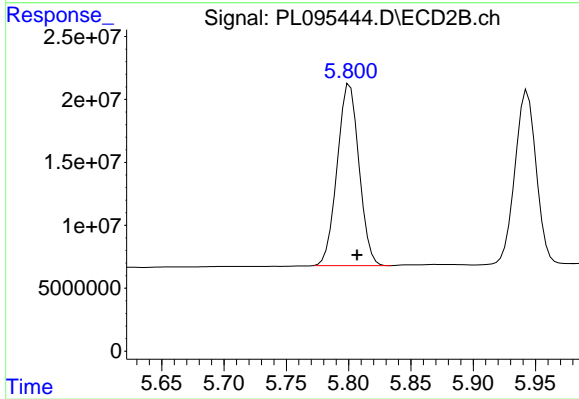
#13 Dieldrin

R.T.: 5.526 min  
 Delta R.T.: -0.005 min  
 Response: 200559713  
 Conc: 49.31 ng/ml



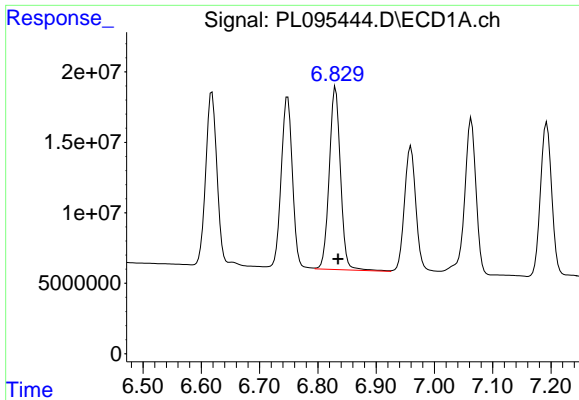
#14 Endrin

R.T.: 6.618 min  
 Delta R.T.: -0.005 min  
 Response: 167268050  
 Conc: 52.52 ng/ml



#14 Endrin

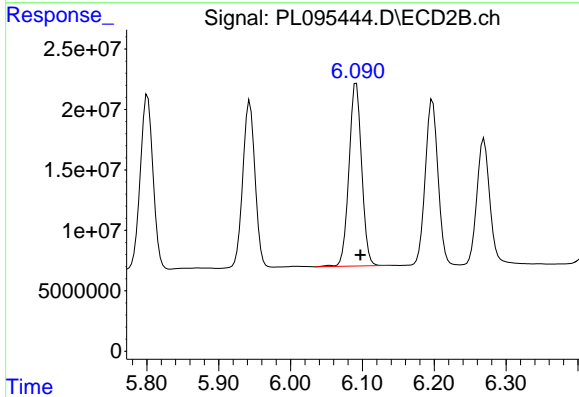
R.T.: 5.801 min  
 Delta R.T.: -0.006 min  
 Response: 176447243  
 Conc: 48.46 ng/ml



#15 Endosulfan II

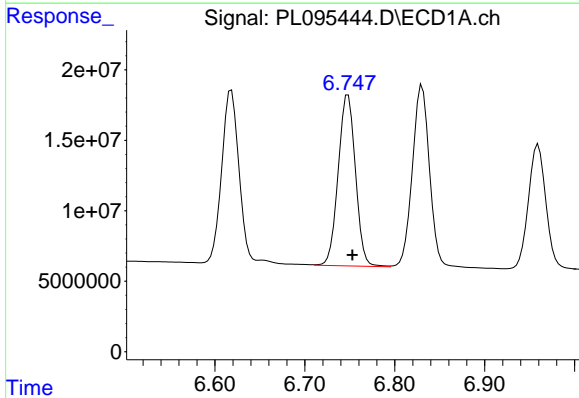
R.T.: 6.830 min  
Delta R.T.: -0.004 min  
Response: 174387772  
Conc: 54.63 ng/ml

Instrument :  
ECD\_L  
ClientSampleId :  
COMP-1MS



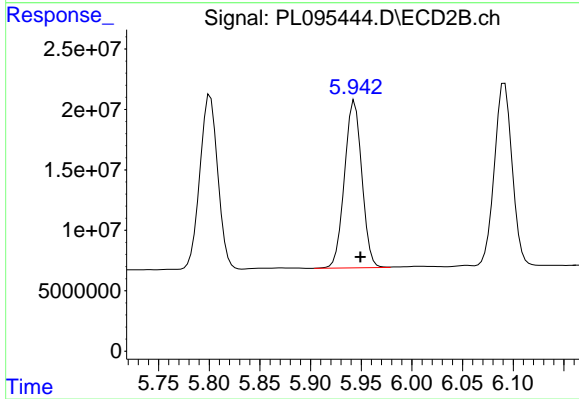
#15 Endosulfan II

R.T.: 6.091 min  
Delta R.T.: -0.006 min  
Response: 185313045  
Conc: 51.60 ng/ml



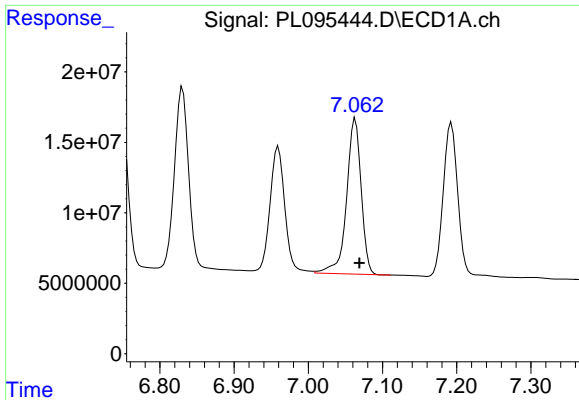
#16 4,4'-DDD

R.T.: 6.748 min  
Delta R.T.: -0.005 min  
Response: 162043381  
Conc: 57.24 ng/ml



#16 4,4'-DDD

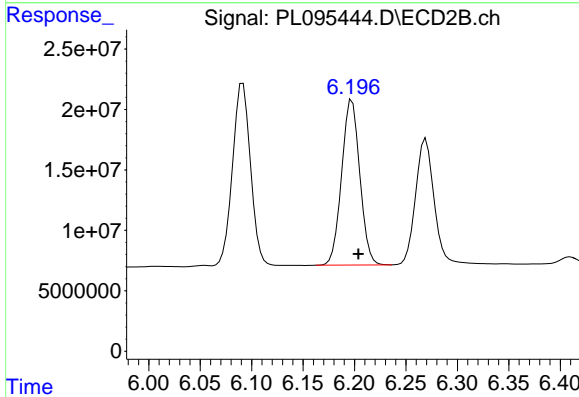
R.T.: 5.943 min  
Delta R.T.: -0.006 min  
Response: 164705892  
Conc: 50.42 ng/ml



#17 4,4'-DDT

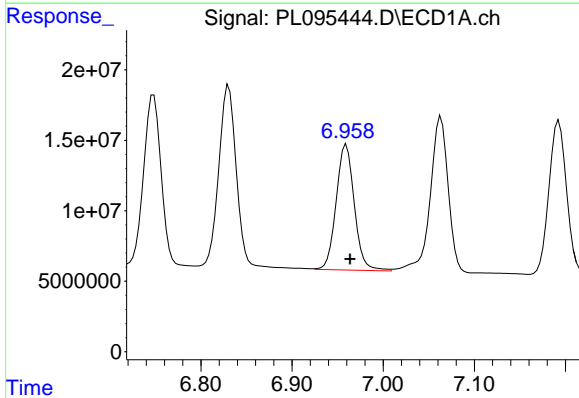
R.T.: 7.063 min  
 Delta R.T.: -0.005 min  
 Response: 150074347  
 Conc: 52.68 ng/ml

Instrument :  
 ECD\_L  
 ClientSampleId :  
 COMP-1MS



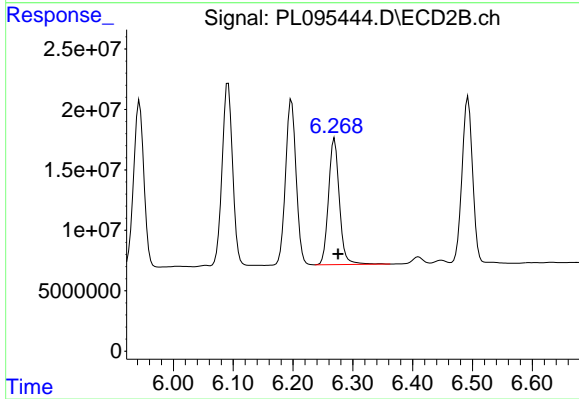
#17 4,4'-DDT

R.T.: 6.198 min  
 Delta R.T.: -0.006 min  
 Response: 168061473  
 Conc: 48.91 ng/ml



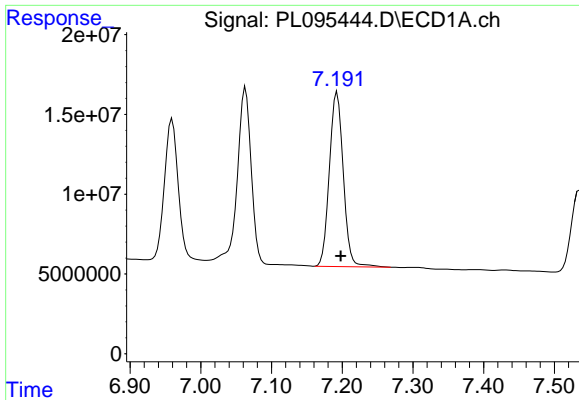
#18 Endrin aldehyde

R.T.: 6.960 min  
 Delta R.T.: -0.004 min  
 Response: 123392865  
 Conc: 53.17 ng/ml



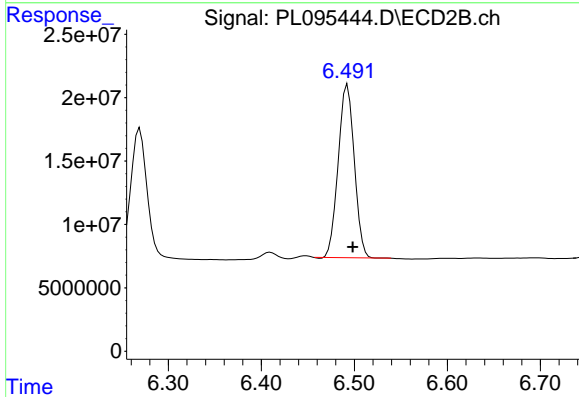
#18 Endrin aldehyde

R.T.: 6.269 min  
 Delta R.T.: -0.006 min  
 Response: 131471183  
 Conc: 50.31 ng/ml

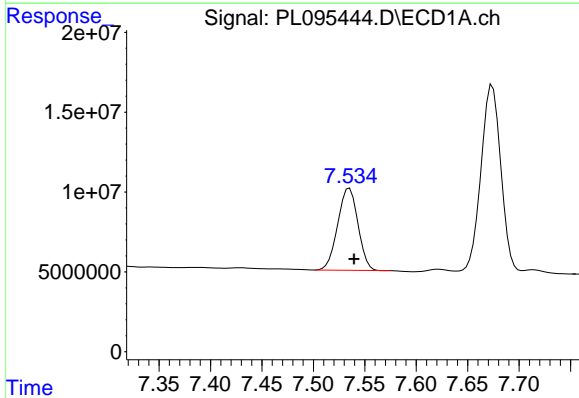


#19 Endosulfan Sulfate  
 R.T.: 7.193 min  
 Delta R.T.: -0.005 min  
 Response: 149235960  
 Conc: 53.26 ng/ml

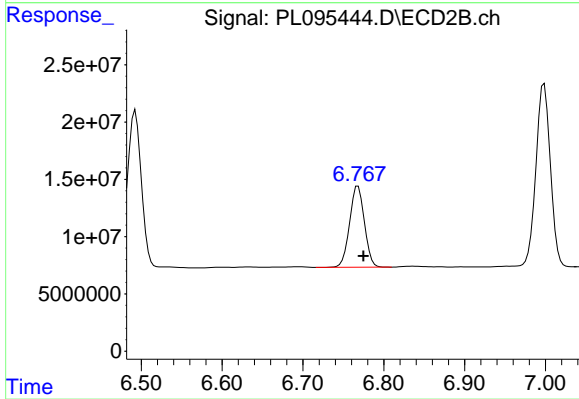
Instrument :  
 ECD\_L  
 ClientSampleId :  
 COMP-1MS



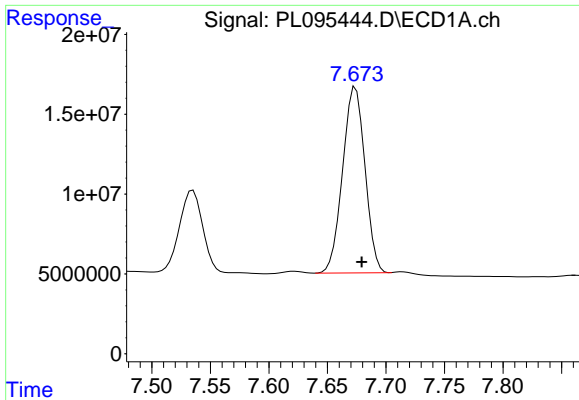
#19 Endosulfan Sulfate  
 R.T.: 6.493 min  
 Delta R.T.: -0.006 min  
 Response: 164013758  
 Conc: 49.43 ng/ml



#20 Methoxychlor  
 R.T.: 7.535 min  
 Delta R.T.: -0.004 min  
 Response: 70476694  
 Conc: 50.52 ng/ml



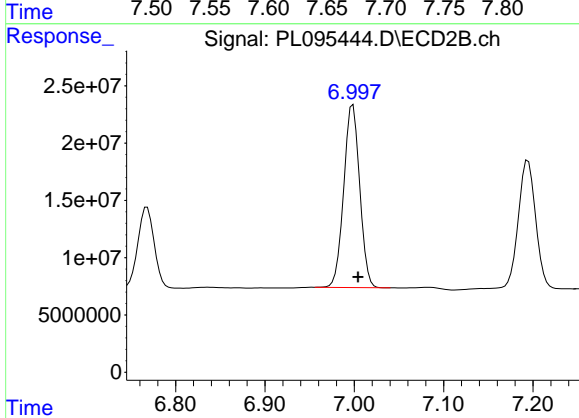
#20 Methoxychlor  
 R.T.: 6.768 min  
 Delta R.T.: -0.007 min  
 Response: 90353671  
 Conc: 47.37 ng/ml



#21 Endrin ketone

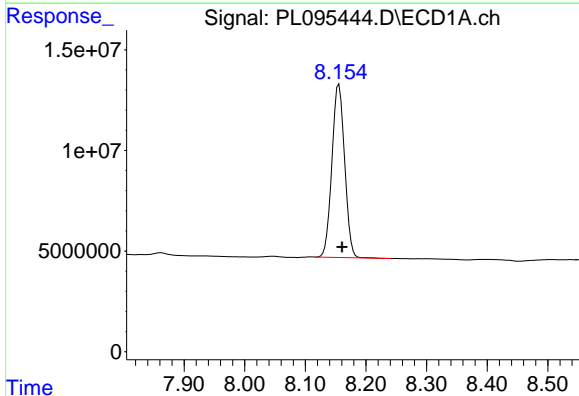
R.T.: 7.674 min  
 Delta R.T.: -0.005 min  
 Response: 154755354  
 Conc: 54.28 ng/ml

Instrument :  
 ECD\_L  
 ClientSampleId :  
 COMP-1MS



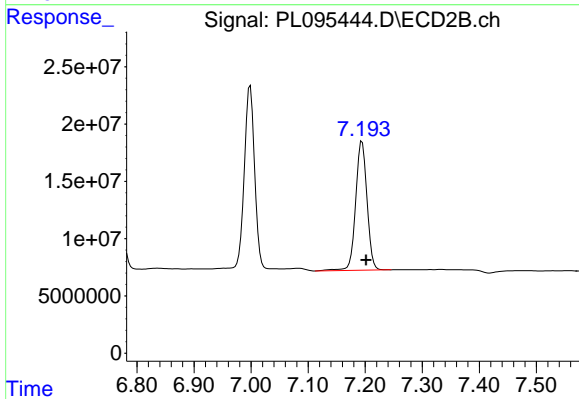
#21 Endrin ketone

R.T.: 6.998 min  
 Delta R.T.: -0.006 min  
 Response: 198021326  
 Conc: 56.24 ng/ml



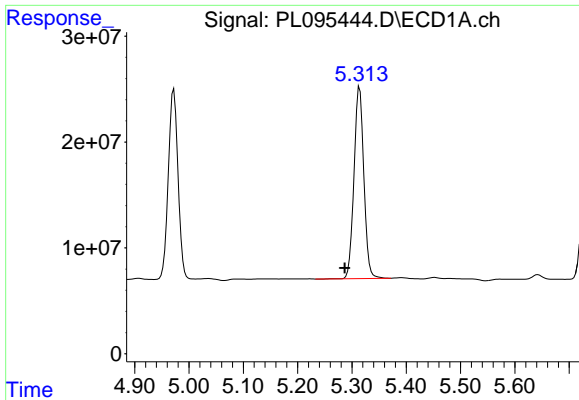
#22 Mirex

R.T.: 8.155 min  
 Delta R.T.: -0.005 min  
 Response: 125294670  
 Conc: 52.73 ng/ml



#22 Mirex

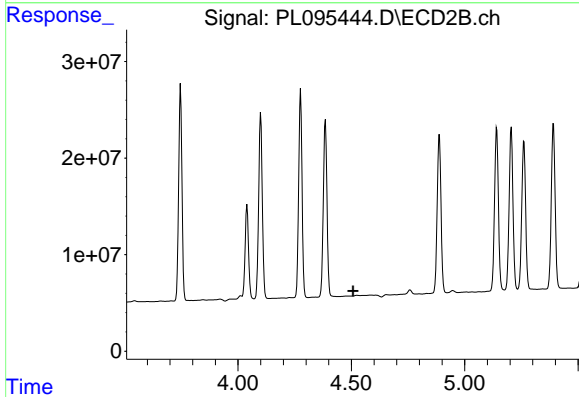
R.T.: 7.194 min  
 Delta R.T.: -0.007 min  
 Response: 155472549  
 Conc: 53.94 ng/ml



#24 Chlordane-2

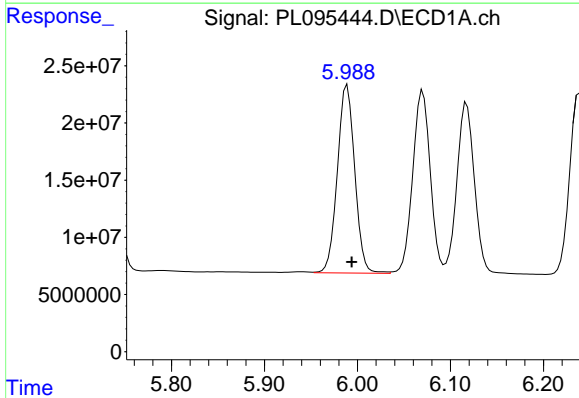
R.T.: 5.314 min  
 Delta R.T.: 0.027 min  
 Response: 228420785  
 Conc: 1078.90 ng/m

Instrument :  
 ECD\_L  
 ClientSampleId :  
 COMP-1MS



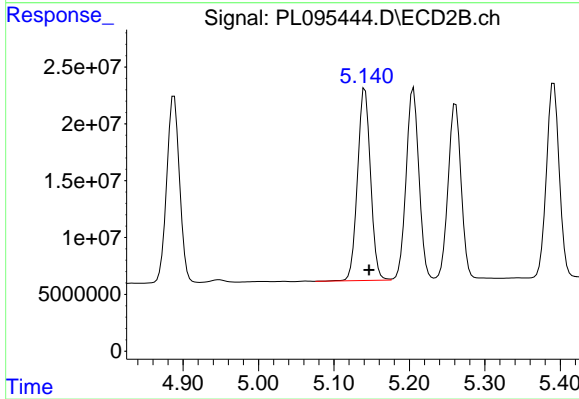
#24 Chlordane-2

R.T.: 0.000 min  
 Exp R.T. : 4.508 min  
 Response: 0  
 Conc: N.D.



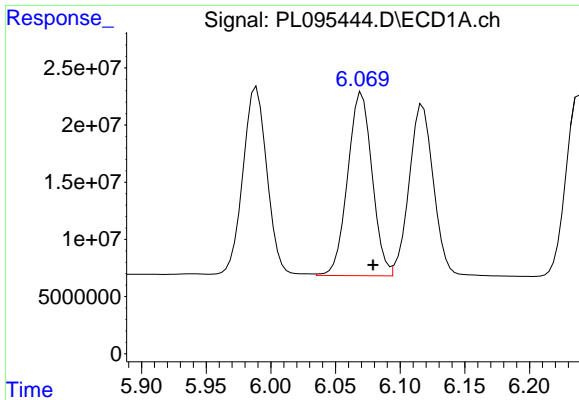
#25 Chlordane-3

R.T.: 5.989 min  
 Delta R.T.: -0.005 min  
 Response: 213369924  
 Conc: 273.93 ng/ml



#25 Chlordane-3

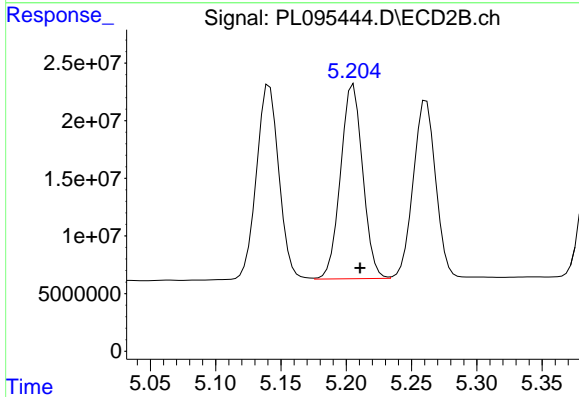
R.T.: 5.141 min  
 Delta R.T.: -0.005 min  
 Response: 202269991  
 Conc: 391.52 ng/ml



#26 Chlordane-4

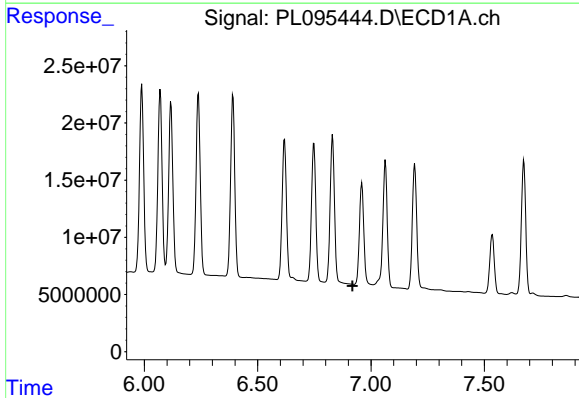
R.T.: 6.070 min  
 Delta R.T.: -0.009 min  
 Response: 210118144  
 Conc: 222.84 ng/ml

Instrument :  
 ECD\_L  
 ClientSampleId :  
 COMP-1MS



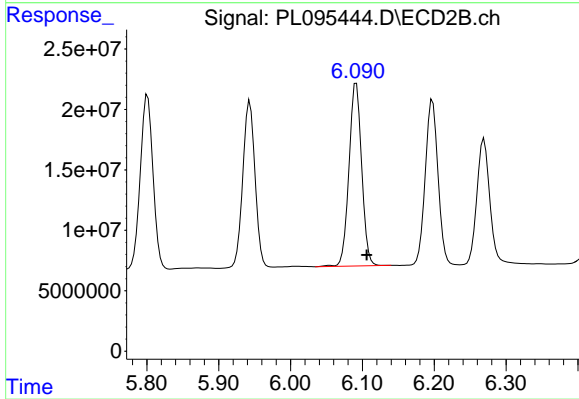
#26 Chlordane-4

R.T.: 5.205 min  
 Delta R.T.: -0.005 min  
 Response: 199144814  
 Conc: 458.21 ng/ml



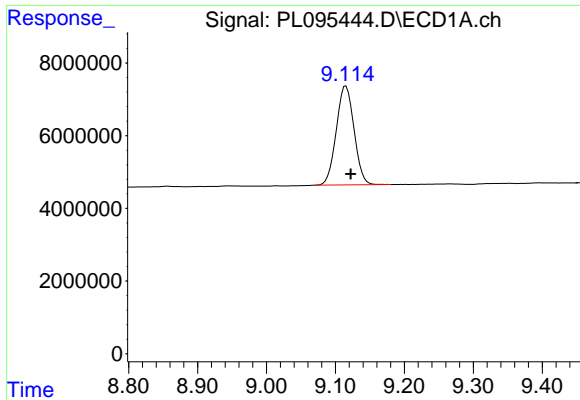
#27 Chlordane-5

R.T.: 0.000 min  
 Exp R.T. : 6.919 min  
 Response: 0  
 Conc: N.D.



#27 Chlordane-5

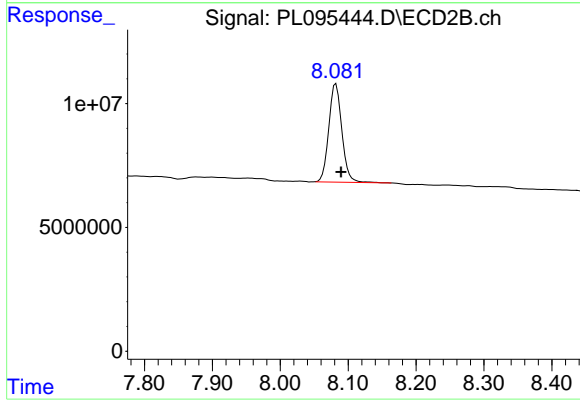
R.T.: 6.091 min  
 Delta R.T.: -0.015 min  
 Response: 185313045  
 Conc: 1003.11 ng/ml



#28 Decachlorobiphenyl

R.T.: 9.115 min  
Delta R.T.: -0.007 min  
Response: 48789481  
Conc: 17.61 ng/ml

Instrument :  
ECD\_L  
ClientSampleId :  
COMP-1MS



#28 Decachlorobiphenyl

R.T.: 8.082 min  
Delta R.T.: -0.007 min  
Response: 53068359  
Conc: 17.93 ng/ml