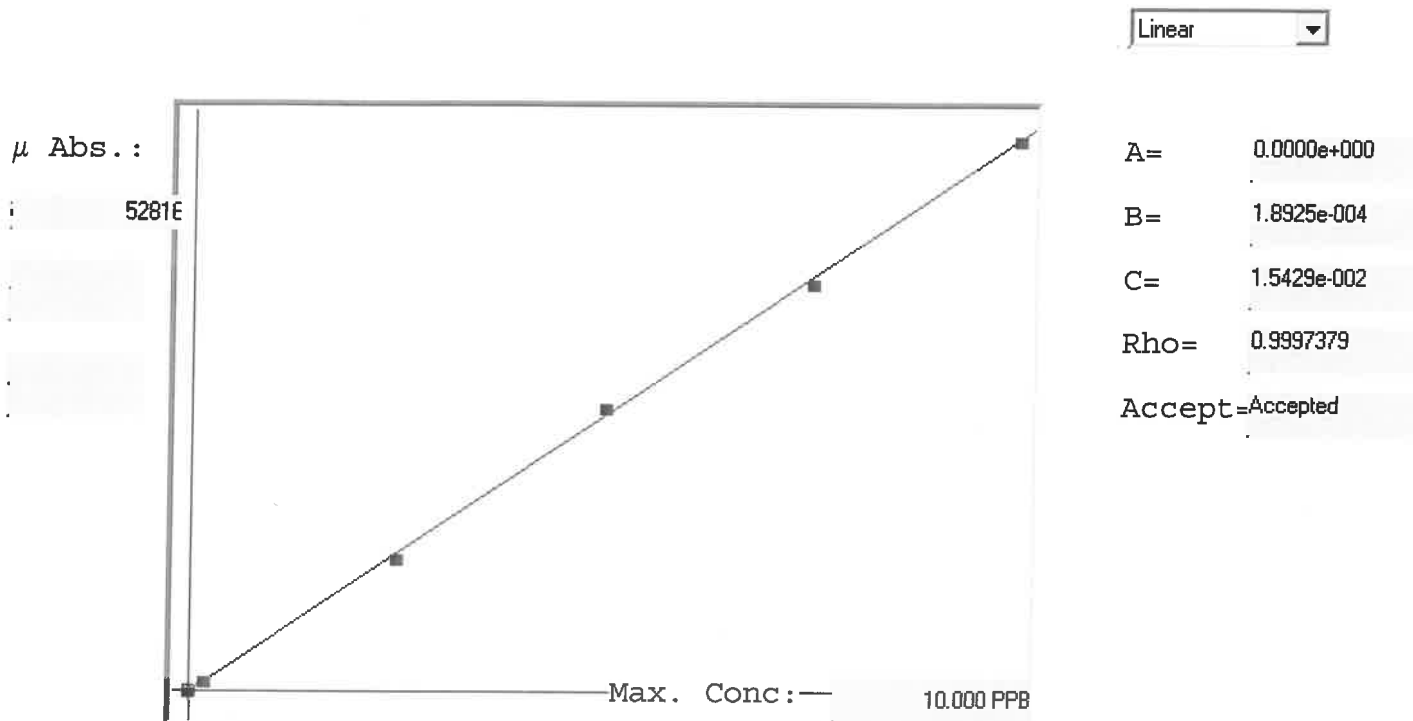


LB135623

7470A

INSTRUMENT 1A: CV1



| Std ID | Conc. | Calc. | Dev. | Mean | SD or %RSD | Rep 1 | Rep 2 | Rep 3 | Rep 4 | Rep 5 |
|--------|--------|--------|--------|-------|------------|-------|-------|-------|-------|-------|
| 0.0 | 0.000 | 0.014 | 0.014 | -7 | 0.000 | -7 | 0 | | | |
| 0.2 | 0.200 | 0.198 | -0.002 | 966 | 0.0 % | 966 | | | | |
| 2.5 | 2.500 | 2.415 | -0.085 | 12681 | 0.0 % | 12681 | | | | |
| 5.0 | 5.000 | 5.160 | 0.160 | 27185 | 0.0 % | 27185 | | | | |
| 7.5 | 7.500 | 7.402 | -0.098 | 39029 | 0.0 % | 39029 | | | | |
| 10.0 | 10.000 | 10.011 | 0.011 | 52816 | 0.0 % | 52816 | | | | |

6/10
1
1
3
3
1
0

LB135555623 INSTRUMENT ID : CV1

Method: 7470A

Operator: Admin

Date of Analysis: 01 May 2025 11:10:46

| Sample ID | Extended ID | μ Abs. | Conc. | Std Conc | Method | Units | Date | Type | Type |
|-----------------|--------------------|--------|---------|----------|--------|----------------------|----------------------|------|------|
| 0.0 - 1 | 50 | -7 | - | 0.0000 | 7470A | PPB | 01 May 2025 11:17:27 | S | Std |
| 0.2 - 1 | 50.2 | 966 | - | 0.2000 | 7470A | PPB | 01 May 2025 11:19:44 | S | Std |
| 2.5 - 1 | 52.5 | 12681 | - | 2.5000 | 7470A | PPB | 01 May 2025 11:22:01 | S | Std |
| 5.0 - 1 | 55 | 27185 | - | 5.0000 | 7470A | PPB | 01 May 2025 11:26:58 | S | Std |
| 7.5 - 1 | 57.5 | 39029 | - | 7.5000 | 7470A | PPB | 01 May 2025 11:31:57 | S | Std |
| 10.0 - 1 | 59 | 52816 | - | 10.0000 | 7470A | PPB | 01 May 2025 11:36:52 | S | Std |
| ICV112 - 1 | ICV112 | 20054 | 3.8106 | -7470A | PPB | 01 May 2025 11:47:40 | U | SMPL | |
| ICB112 - 1 | ICB112 | -356 | -0.0519 | -7470A | PPB | 01 May 2025 11:49:58 | U | SMPL | |
| CCV62 - 1 | CCV62 | 25268 | 4.7973 | -7470A | PPB | 01 May 2025 11:58:50 | U | SMPL | |
| CCB62 - 1 | CCB62 | -363 | -0.0533 | -7470A | PPB | 01 May 2025 12:01:04 | U | SMPL | |
| CRA - 1 | CRA | 824 | 0.1714 | -7470A | PPB | 01 May 2025 12:05:54 | U | SMPL | |
| HighStd - 1 | HighStd | 49868 | 9.4528 | -7470A | PPB | 01 May 2025 12:08:09 | U | SMPL | |
| ChkStd - 1 | ChkStd | 39767 | 7.5412 | -7470A | PPB | 01 May 2025 12:18:24 | U | SMPL | |
| PB167806BL - 1 | PBW | 306 | 0.0733 | -7470A | PPB | 01 May 2025 12:28:15 | U | SMPL | |
| PB167806BS - 1 | LCSW | 17569 | 3.3403 | -7470A | PPB | 01 May 2025 12:30:30 | U | SMPL | |
| Q1901-08 - 1 | B-167-SB01 | -265 | -0.0347 | -7470A | PPB | 01 May 2025 12:32:47 | U | SMPL | |
| Q1901-08DUP - 1 | B-167-SB01DUP | -24 | 0.0109 | -7470A | PPB | 01 May 2025 12:35:05 | U | SMPL | |
| Q1901-08MS - 1 | B-167-SB01MS | 20586 | 3.9113 | -7470A | PPB | 01 May 2025 12:39:26 | U | SMPL | |
| Q1901-08MSD - 1 | B-167-SB01MSD | 21549 | 4.0935 | -7470A | PPB | 01 May 2025 12:41:43 | U | SMPL | |
| Q1901-09 - 1 | B-170-SB01 | -223 | -0.0268 | -7470A | PPB | 01 May 2025 12:44:01 | U | SMPL | |
| CCV63 - 1 | CCV63 | 26403 | 5.0121 | -7470A | PPB | 01 May 2025 12:49:05 | U | SMPL | |
| CCB63 - 1 | CCB63 | -486 | -0.0765 | -7470A | PPB | 01 May 2025 12:51:22 | U | SMPL | |
| Q1901-10 - 1 | B-167-SB02 | -25 | 0.0107 | -7470A | PPB | 01 May 2025 12:53:39 | U | SMPL | |
| Q1901-11 - 1 | B-170-SB02 | -209 | -0.0241 | -7470A | PPB | 01 May 2025 12:55:54 | U | SMPL | |
| Q1904-02 - 1 | VNJ-210 | -109 | -0.0052 | -7470A | PPB | 01 May 2025 12:58:10 | U | SMPL | |
| Q1905-04 - 1 | MH-G | -28 | 0.0101 | -7470A | PPB | 01 May 2025 13:00:26 | U | SMPL | |
| Q1905-08 - 1 | MH-H | -17 | 0.0122 | -7470A | PPB | 01 May 2025 13:02:42 | U | SMPL | |
| Q1906-04 - 1 | WC-4 | 17 | 0.0186 | -7470A | PPB | 01 May 2025 13:04:58 | U | SMPL | |
| Q1906-08 - 1 | WC-5 | 11 | 0.0175 | -7470A | PPB | 01 May 2025 13:07:14 | U | SMPL | |
| Q1906-12 - 1 | WC-6 | 19 | 0.0190 | -7470A | PPB | 01 May 2025 13:09:31 | U | SMPL | |
| Q1906-16 - 1 | WC-7 | 46 | 0.0241 | -7470A | PPB | 01 May 2025 13:11:48 | U | SMPL | |
| Q1907-02 - 1 | CO-8R-WC | 60 | 0.0268 | -7470A | PPB | 01 May 2025 13:14:04 | U | SMPL | |
| CCV64 - 1 | CCV64 | 26832 | 5.0933 | -7470A | PPB | 01 May 2025 13:19:10 | U | SMPL | |
| CCB64 - 1 | CCB64 | -101 | -0.0037 | -7470A | PPB | 01 May 2025 13:23:57 | U | SMPL | |
| Q1912-04 - 1 | MH-E | -32 | 0.0094 | -7470A | PPB | 01 May 2025 13:26:13 | U | SMPL | |
| Q1912-08 - 1 | MH-F | -7 | 0.0141 | -7470A | PPB | 01 May 2025 13:28:29 | U | SMPL | |
| PB167807BL - 1 | PBW | -14 | 0.0128 | -7470A | PPB | 01 May 2025 13:30:44 | U | SMPL | |
| PB167807BS - 1 | LCSW | 21802 | 4.1414 | -7470A | PPB | 01 May 2025 13:42:10 | U | SMPL | |
| Q1913-02 - 1 | WC-12-A-202504 | -316 | -0.0444 | -7470A | PPB | 01 May 2025 13:44:25 | U | SMPL | |
| Q1913-02DUP - 1 | WC-12-A-202504DUP | -57 | 0.0046 | -7470A | PPB | 01 May 2025 13:46:47 | U | SMPL | |
| Q1913-02MS - 1 | WC-12-A-202504MS | 16431 | 3.1249 | -7470A | PPB | 01 May 2025 13:49:03 | U | SMPL | |
| Q1913-02MSD - 1 | WC-12-A-202504MSD | 16445 | 3.1276 | -7470A | PPB | 01 May 2025 13:51:20 | U | SMPL | |
| Q1913-04 - 1 | WC-13-A-202504 | -268 | -0.0353 | -7470A | PPB | 01 May 2025 13:53:38 | U | SMPL | |
| PB167812BL - 1 | PBW | -25 | 0.0107 | -7470A | PPB | 01 May 2025 13:55:57 | U | SMPL | |
| CCV65 - 1 | CCV65 | 25106 | 4.7667 | -7470A | PPB | 01 May 2025 13:58:13 | U | SMPL | |
| CCB65 - 1 | CCB65 | -150 | -0.0130 | -7470A | PPB | 01 May 2025 14:02:49 | U | SMPL | |
| PB167812BS - 1 | LCSW | 21628 | 4.1085 | -7470A | PPB | 01 May 2025 14:05:08 | U | SMPL | |
| Q1890-01 - 1 | TW-WTS-07 | -103 | -0.0041 | -7470A | PPB | 01 May 2025 14:07:24 | U | SMPL | |
| Q1896-03 - 1 | 295-BERGEN-FRAC | 5385 | 1.0345 | -7470A | PPB | 01 May 2025 14:15:04 | U | SMPL | |
| Q1896-03DUP - 1 | 295-BERGEN-FRACDUP | 4924 | 0.9473 | -7470A | PPB | 01 May 2025 14:17:26 | U | SMPL | |
| Q1896-03MS - 1 | 295-BERGEN-FRACMS | 20396 | 3.8753 | -7470A | PPB | 01 May 2025 14:22:23 | U | SMPL | |
| Q1896-03MSD - 1 | 295-BERGEN-FRACMSD | 20002 | 3.8008 | -7470A | PPB | 01 May 2025 14:24:39 | U | SMPL | |
| Q1901-06 - 1 | FB04262025 | -263 | -0.0343 | -7470A | PPB | 01 May 2025 14:26:57 | U | SMPL | |
| CCV66 - 1 | CCV66 | 24238 | 4.6024 | -7470A | PPB | 01 May 2025 14:29:16 | U | SMPL | |
| CCB66 - 1 | CCB66 | 114 | 0.0370 | -7470A | PPB | 01 May 2025 14:40:49 | U | SMPL | |
| Q1915-01 - 1 | | 11 | 0.0175 | -7470A | PPB | 01 May 2025 14:43:05 | U | SMPL | |
| PB167774TB - 1 | PB167774TB | 5 | 0.0164 | -7470A | PPB | 01 May 2025 14:45:21 | U | SMPL | |
| PB167805TB - 1 | PB167805TB | 25 | 0.0202 | -7470A | PPB | 01 May 2025 14:47:36 | U | SMPL | |
| Q1901-08LX5 - 1 | | 51 | 0.0251 | -7470A | PPB | 01 May 2025 14:49:52 | U | SMPL | |
| Q1901-08A - 1 | | 24645 | 4.6794 | -7470A | PPB | 01 May 2025 15:00:14 | U | SMPL | |
| Q1913-02LX5 - 1 | | -368 | -0.0542 | -7470A | PPB | 01 May 2025 15:02:29 | U | SMPL | |
| Q1913-02A - 1 | | 21948 | 4.1690 | -7470A | PPB | 01 May 2025 15:04:47 | U | SMPL | |
| Q1896-03LX5 - 1 | | 602 | 0.1294 | -7470A | PPB | 01 May 2025 15:07:02 | U | SMPL | |
| Q1896-03A - 1 | | 25697 | 4.8785 | -7470A | PPB | 01 May 2025 15:12:39 | U | SMPL | |
| CCV67 - 1 | CCV67 | 24276 | 4.6096 | -7470A | PPB | 01 May 2025 15:23:09 | U | SMPL | |
| CCB67 - 1 | CCB67 | -188 | -0.0201 | -7470A | PPB | 01 May 2025 15:25:28 | U | SMPL | |
| GEB62 - 1 | CCB62 | 0 | 0.0154 | -7470A | PPB | 01 May 2025 11:54:28 | U | SMPL | |