

Data Path : Z:\voasrv\HPCHEM1\MSVOA\_X\Data\VX050225\  
 Data File : VX046015.D  
 Acq On : 02 May 2025 10:19  
 Operator : JC/MD  
 Sample : VX0502WBL01  
 Misc : 5.0mL/MSVOA\_X/WATER  
 ALS Vial : 4 Sample Multiplier: 1

**Instrument :**  
 MSVOA\_X  
**ClientSampleId :**  
 VX0502WBL01

Quant Time: May 02 13:01:21 2025  
 Quant Method : Z:\voasrv\HPCHEM1\MSVOA\_X\Method\82X040225W.M  
 Quant Title : SW846 8260  
 QLast Update : Wed Apr 02 03:11:43 2025  
 Response via : Initial Calibration

| Compound                    | R.T.   | QIon  | Response | Conc     | Units | Dev(Min) |
|-----------------------------|--------|-------|----------|----------|-------|----------|
| Internal Standards          |        |       |          |          |       |          |
| 1) Pentafluorobenzene       | 5.544  | 168   | 66865    | 50.000   | ug/l  | 0.00     |
| 34) 1,4-Difluorobenzene     | 6.757  | 114   | 129422   | 50.000   | ug/l  | 0.00     |
| 63) Chlorobenzene-d5        | 10.049 | 117   | 121808   | 50.000   | ug/l  | 0.00     |
| 72) 1,4-Dichlorobenzene-d4  | 12.018 | 152   | 52200    | 50.000   | ug/l  | 0.00     |
| System Monitoring Compounds |        |       |          |          |       |          |
| 33) 1,2-Dichloroethane-d4   | 5.952  | 65    | 64859    | 53.042   | ug/l  | 0.00     |
| Spiked Amount               | 50.000 | Range | 74 - 125 | Recovery | =     | 106.080% |
| 35) Dibromofluoromethane    | 5.379  | 113   | 47640    | 51.881   | ug/l  | 0.00     |
| Spiked Amount               | 50.000 | Range | 75 - 124 | Recovery | =     | 103.760% |
| 50) Toluene-d8              | 8.647  | 98    | 163418   | 50.988   | ug/l  | 0.00     |
| Spiked Amount               | 50.000 | Range | 86 - 113 | Recovery | =     | 101.980% |
| 62) 4-Bromofluorobenzene    | 11.079 | 95    | 61953    | 53.067   | ug/l  | 0.00     |
| Spiked Amount               | 50.000 | Range | 77 - 121 | Recovery | =     | 106.140% |

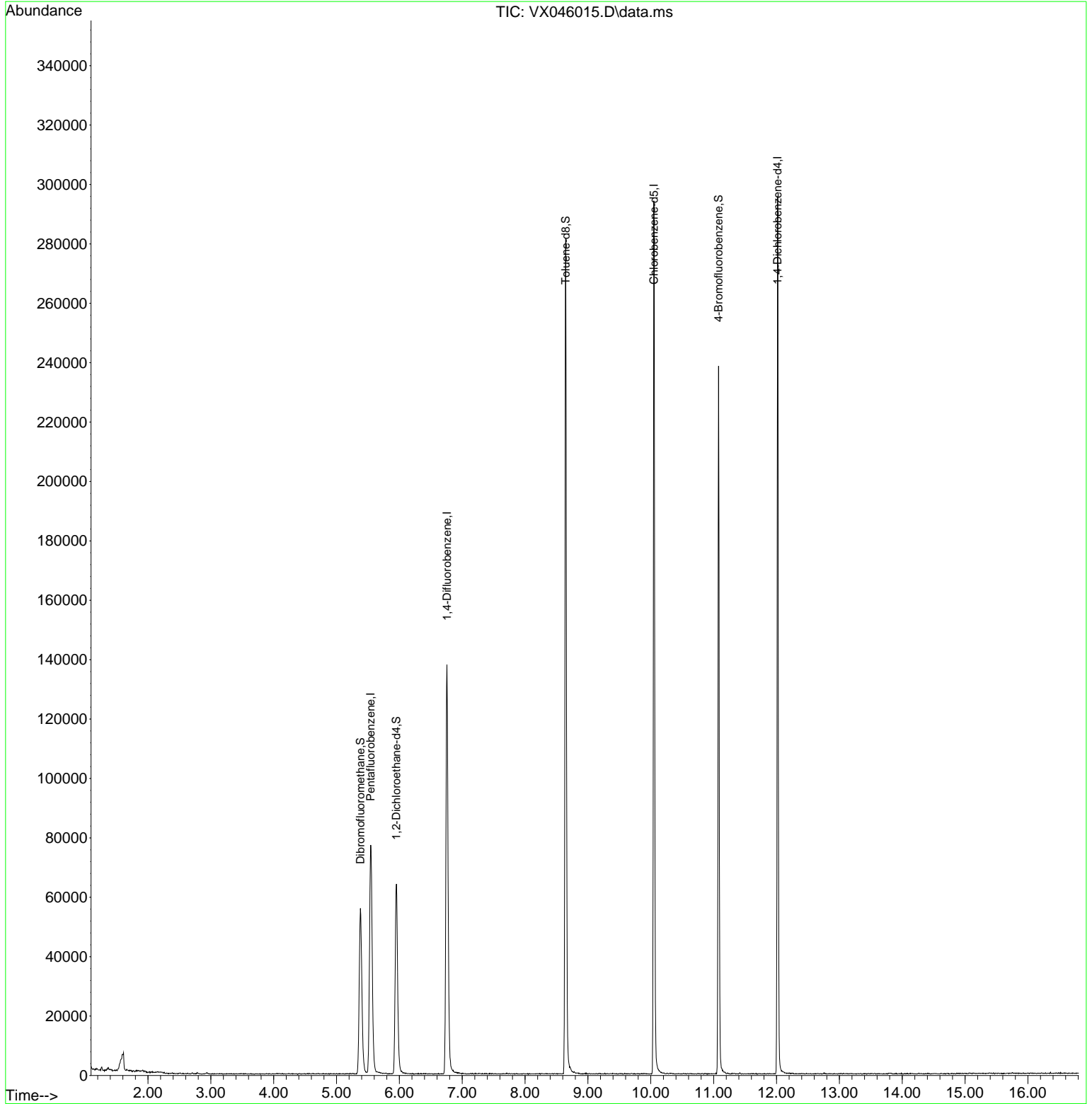
Target Compounds Qvalue

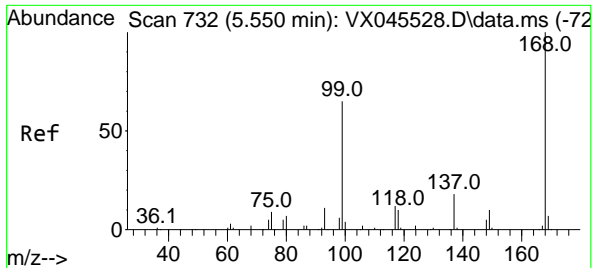
(#) = qualifier out of range (m) = manual integration (+) = signals summed

Data Path : Z:\voasrv\HPCHEM1\MSVOA\_X\Data\VX050225\  
 Data File : VX046015.D  
 Acq On : 02 May 2025 10:19  
 Operator : JC/MD  
 Sample : VX0502WBL01  
 Misc : 5.0mL/MSVOA\_X/WATER  
 ALS Vial : 4 Sample Multiplier: 1

Instrument :  
 MSVOA\_X  
 ClientSampleId :  
 VX0502WBL01

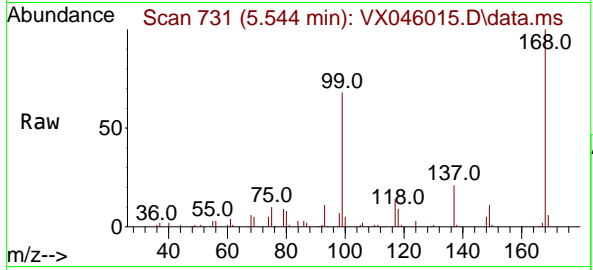
Quant Time: May 02 13:01:21 2025  
 Quant Method : Z:\voasrv\HPCHEM1\MSVOA\_X\Method\82X040225W.M  
 Quant Title : SW846 8260  
 QLast Update : Wed Apr 02 03:11:43 2025  
 Response via : Initial Calibration



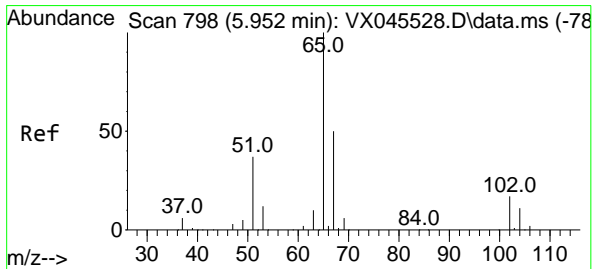
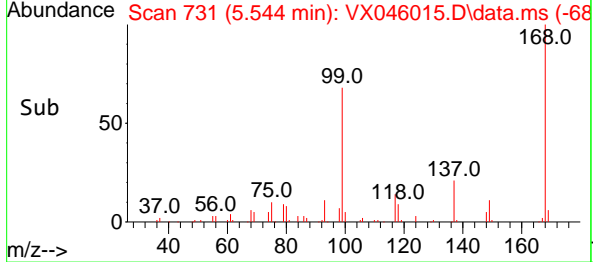
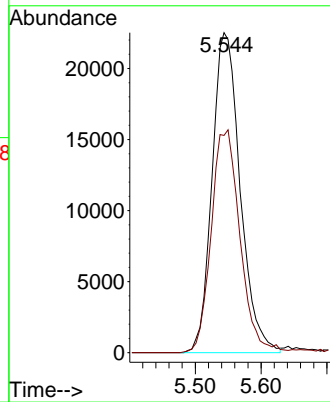


#1  
 Pentafluorobenzene  
 Concen: 50.000 ug/l  
 RT: 5.544 min Scan# 711  
 Delta R.T. -0.006 min  
 Lab File: VX046015.D  
 Acq: 02 May 2025 10:19

Instrument :  
 MSVOA\_X  
 ClientSampleId :  
 VX0502WBL01

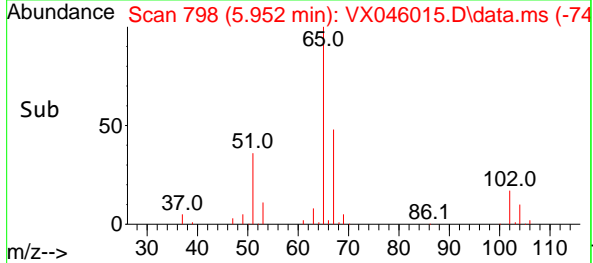
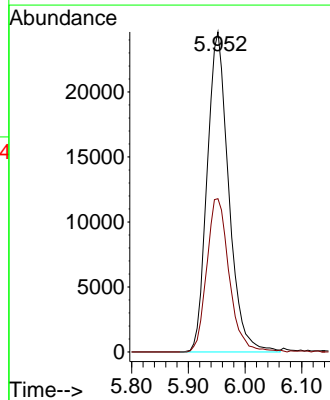
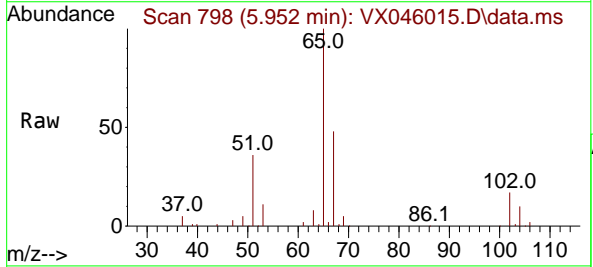


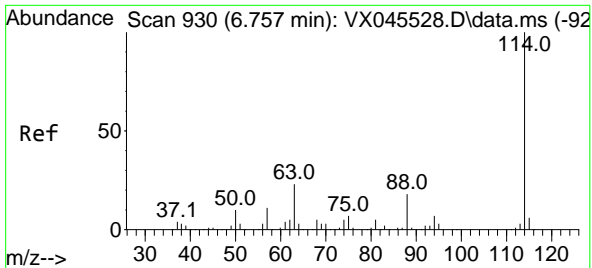
Tgt Ion:168 Resp: 66865  
 Ion Ratio Lower Upper  
 168 100  
 99 67.9 52.3 78.5



#33  
 1,2-Dichloroethane-d4  
 Concen: 53.042 ug/l  
 RT: 5.952 min Scan# 798  
 Delta R.T. -0.000 min  
 Lab File: VX046015.D  
 Acq: 02 May 2025 10:19

Tgt Ion: 65 Resp: 64859  
 Ion Ratio Lower Upper  
 65 100  
 67 50.0 0.0 99.0



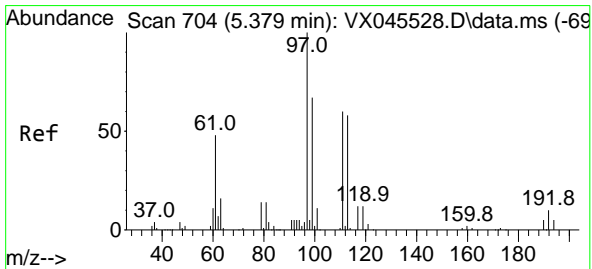
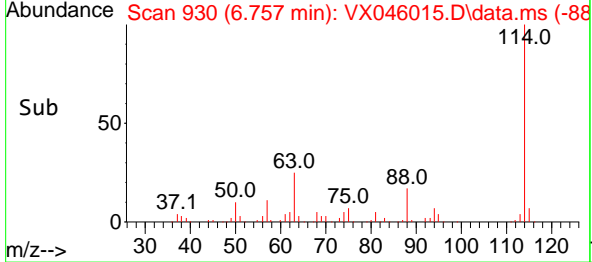
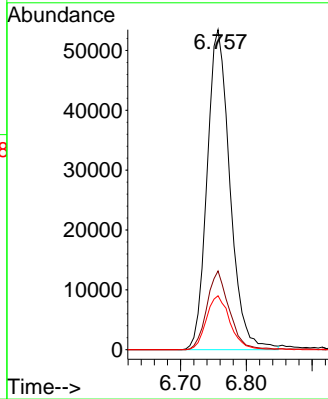
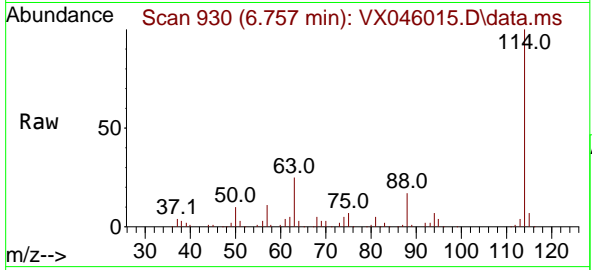


#34  
 1,4-Difluorobenzene  
 Concen: 50.000 ug/l  
 RT: 6.757 min Scan# 911  
 Delta R.T. -0.000 min  
 Lab File: VX046015.D  
 Acq: 02 May 2025 10:19

Instrument :  
 MSVOA\_X  
 ClientSampleId :  
 VX0502WBL01

Tgt Ion:114 Resp: 129422

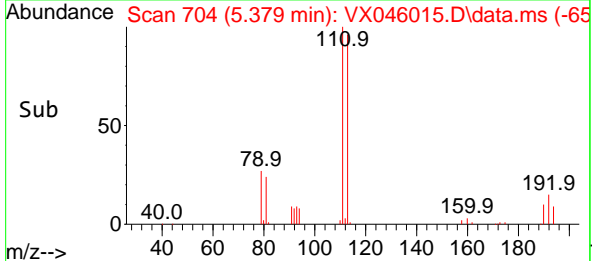
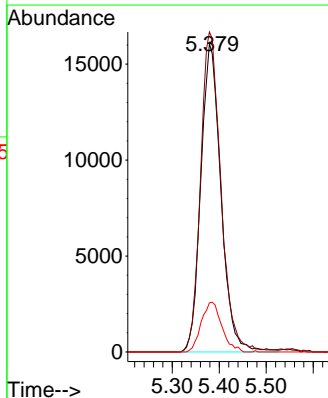
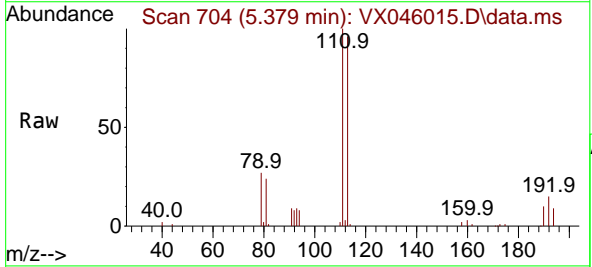
| Ion | Ratio | Lower | Upper |
|-----|-------|-------|-------|
| 114 | 100   |       |       |
| 63  | 24.6  | 0.0   | 46.8  |
| 88  | 16.9  | 0.0   | 35.4  |

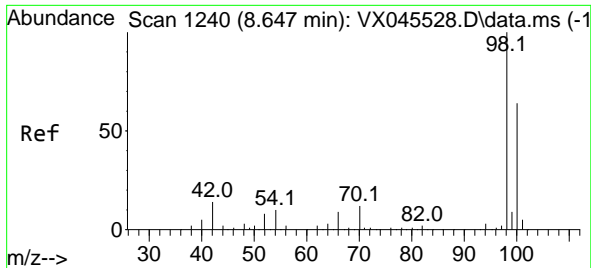


#35  
 Dibromofluoromethane  
 Concen: 51.881 ug/l  
 RT: 5.379 min Scan# 704  
 Delta R.T. -0.000 min  
 Lab File: VX046015.D  
 Acq: 02 May 2025 10:19

Tgt Ion:113 Resp: 47640

| Ion | Ratio | Lower | Upper |
|-----|-------|-------|-------|
| 113 | 100   |       |       |
| 111 | 104.8 | 81.8  | 122.6 |
| 192 | 16.5  | 13.8  | 20.6  |

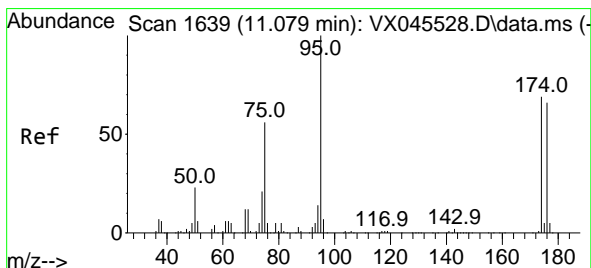
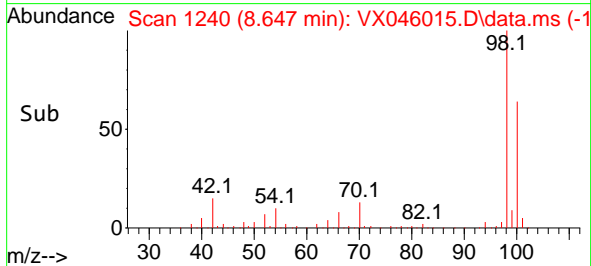
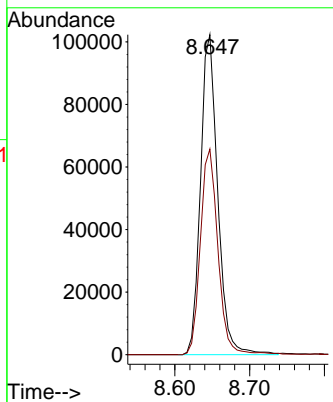
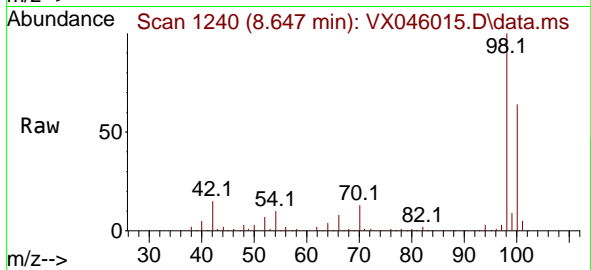




#50  
 Toluene-d8  
 Concen: 50.988 ug/l  
 RT: 8.647 min Scan# 11  
 Delta R.T. -0.000 min  
 Lab File: VX046015.D  
 Acq: 02 May 2025 10:19

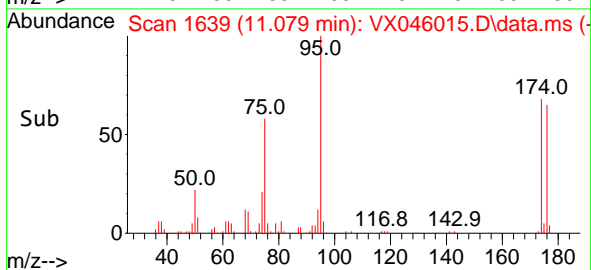
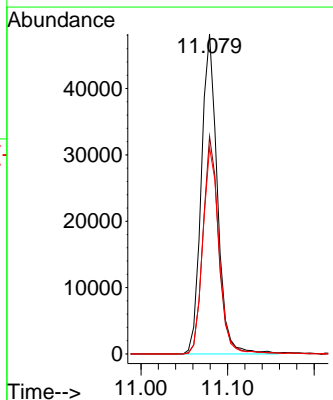
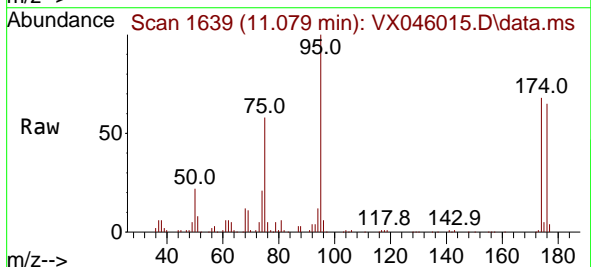
Instrument :  
 MSVOA\_X  
 ClientSampleId :  
 VX0502WBL01

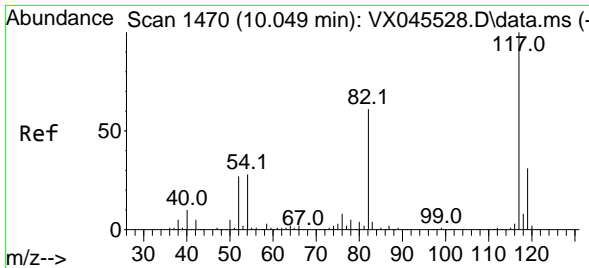
Tgt Ion: 98 Resp: 163418  
 Ion Ratio Lower Upper  
 98 100  
 100 65.8 52.2 78.4



#62  
 4-Bromofluorobenzene  
 Concen: 53.067 ug/l  
 RT: 11.079 min Scan# 1639  
 Delta R.T. -0.000 min  
 Lab File: VX046015.D  
 Acq: 02 May 2025 10:19

Tgt Ion: 95 Resp: 61953  
 Ion Ratio Lower Upper  
 95 100  
 174 66.8 0.0 135.8  
 176 65.4 0.0 131.4



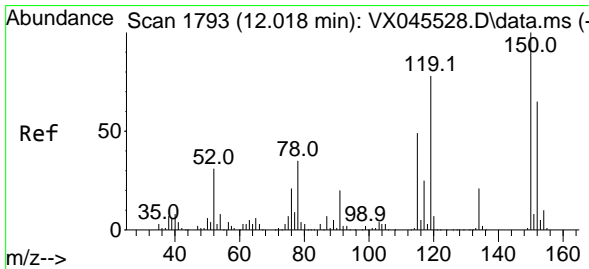
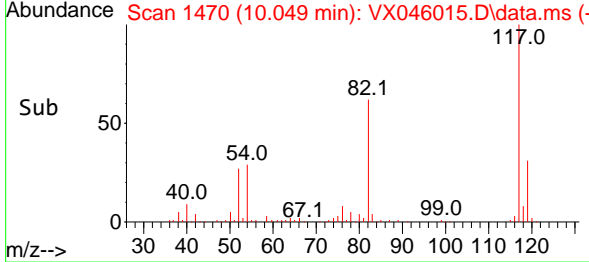
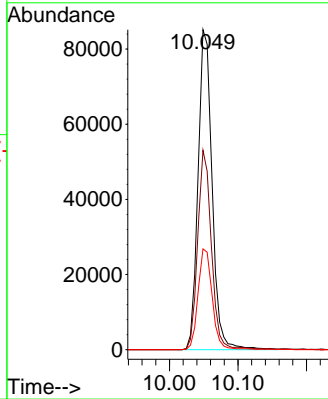
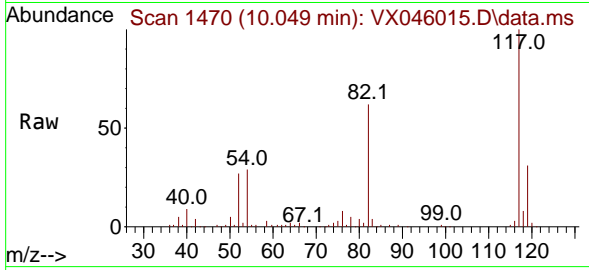


#63  
 Chlorobenzene-d5  
 Concen: 50.000 ug/l  
 RT: 10.049 min Scan# 14  
 Delta R.T. -0.000 min  
 Lab File: VX046015.D  
 Acq: 02 May 2025 10:19

Instrument :  
 MSVOA\_X  
 ClientSampleId :  
 VX0502WBL01

Tgt Ion:117 Resp: 121808

| Ion | Ratio | Lower | Upper |
|-----|-------|-------|-------|
| 117 | 100   |       |       |
| 82  | 62.3  | 49.2  | 73.8  |
| 119 | 31.5  | 25.1  | 37.7  |



#72  
 1,4-Dichlorobenzene-d4  
 Concen: 50.000 ug/l  
 RT: 12.018 min Scan# 1793  
 Delta R.T. -0.000 min  
 Lab File: VX046015.D  
 Acq: 02 May 2025 10:19

Tgt Ion:152 Resp: 52200

| Ion | Ratio | Lower | Upper |
|-----|-------|-------|-------|
| 152 | 100   |       |       |
| 115 | 65.3  | 46.9  | 140.7 |
| 150 | 159.7 | 0.0   | 349.4 |

