

Data Path : Z:\pestpcbsrv\HPCHEM1\FID_C\Data\FC050525AL\
 Data File : FC068767.D
 Signal(s) : FID1A.ch
 Acq On : 05 May 2025 13:49
 Operator : YP/AJ
 Sample : PB167855BL
 Misc :
 ALS Vial : 11 Sample Multiplier: 1

Instrument :
 FID_C
ClientSampleId :
 PB167855BL

Integration File: autoint1.e
 Quant Time: May 06 03:50:33 2025
 Quant Method : Z:\pestpcbsrv\HPCHEM1\FID_C\Method\Aliphatic EPH 040925.M
 Quant Title : GC Extractables
 QLast Update : Tue Apr 08 17:31:27 2025
 Response via : Initial Calibration
 Integrator: ChemStation

Volume Inj. : 1 ul
 Signal Phase : Rxi-1ms
 Signal Info : 20M x 0.18mm x 0.18um

Compound	R.T.	Response	Conc Units

System Monitoring Compounds			
9) S ortho-Terphenyl (SURR)	11.712	4202996	33.007 ug/ml
Spiked Amount	50.000	Recovery	= 66.01%
12) S 1-chlorooctadecane (S...	13.145	3141763	33.821 ug/ml
Spiked Amount	50.000	Recovery	= 67.64%

Target Compounds

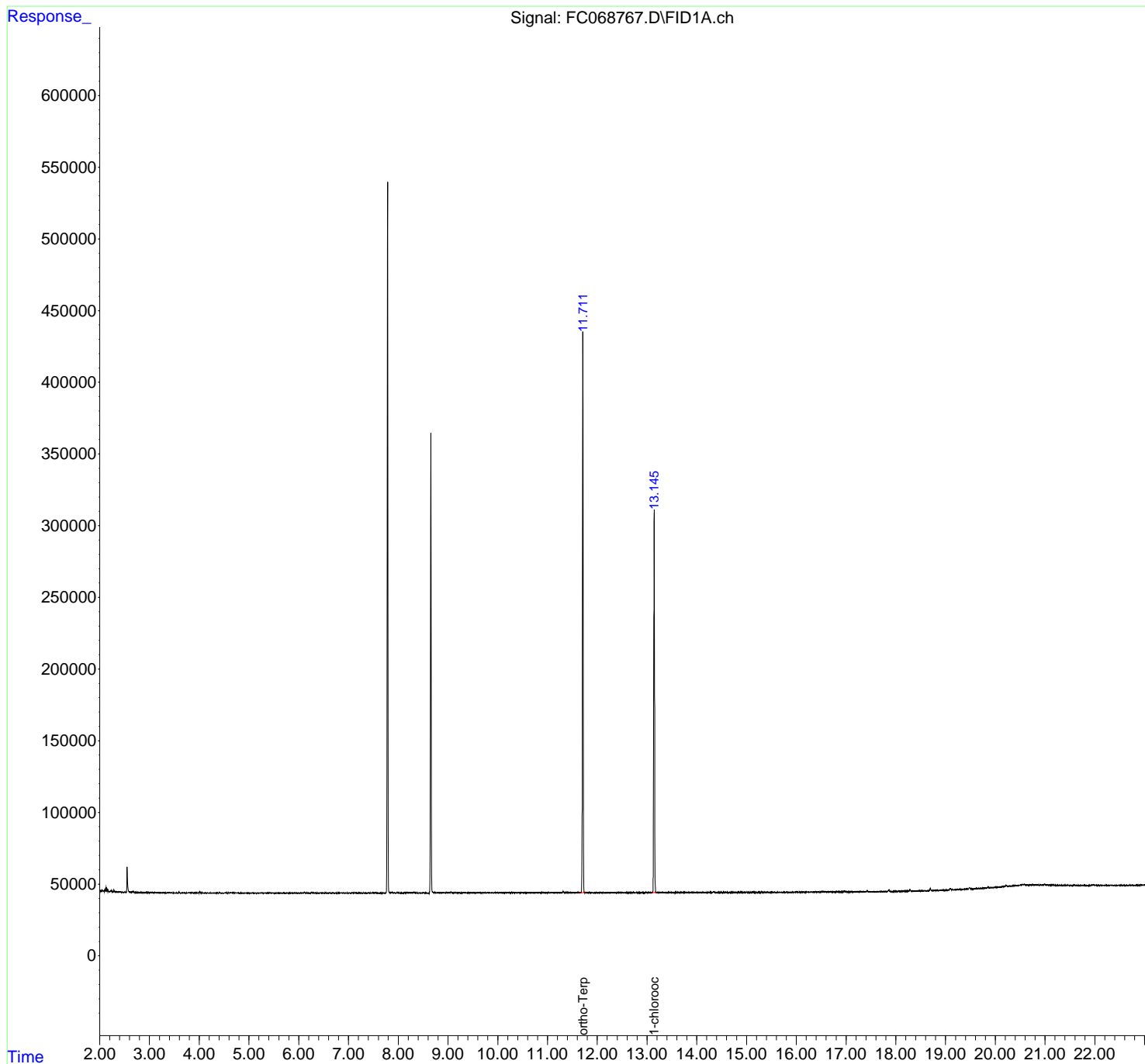
(f)=RT Delta > 1/2 Window (m)=manual int.

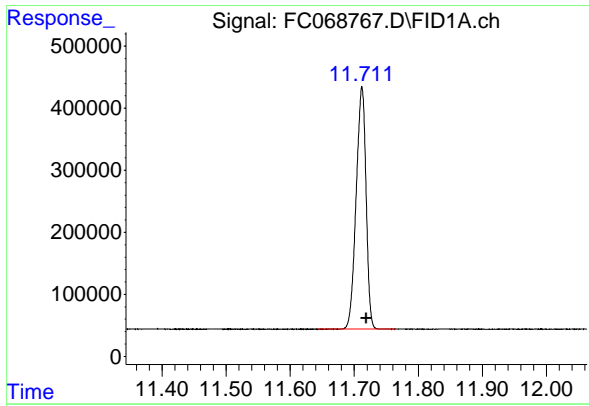
Data Path : Z:\pestpcbsrv\HPCHEM1\FID_C\Data\FC050525AL\
 Data File : FC068767.D
 Signal(s) : FID1A.ch
 Acq On : 05 May 2025 13:49
 Operator : YP/AJ
 Sample : PB167855BL
 Misc :
 ALS Vial : 11 Sample Multiplier: 1

Instrument :
 FID_C
 ClientSampleId :
 PB167855BL

Integration File: autoint1.e
 Quant Time: May 06 03:50:33 2025
 Quant Method : Z:\pestpcbsrv\HPCHEM1\FID_C\Method\Aliphatic EPH 040925.M
 Quant Title : GC Extractables
 QLast Update : Tue Apr 08 17:31:27 2025
 Response via : Initial Calibration
 Integrator: ChemStation

Volume Inj. : 1 ul
 Signal Phase : Rxi-1ms
 Signal Info : 20M x 0.18mm x 0.18um

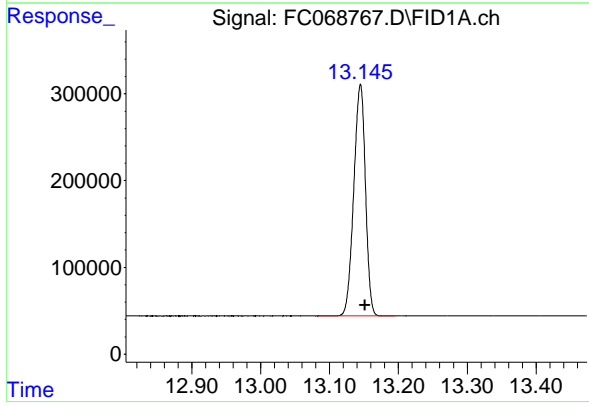




#9 ortho-Terphenyl (SURR)

R.T.: 11.712 min
Delta R.T.: -0.007 min
Response: 4202996
Conc: 33.01 ug/ml

Instrument :
FID_C
ClientSampleId :
PB167855BL



#12 1-chlorooctadecane (SURR)

R.T.: 13.145 min
Delta R.T.: -0.007 min
Response: 3141763
Conc: 33.82 ug/ml