

Data Path : Z:\pestpcbsrv\HPCHEM1\ECD_L\Data\PL050625\
 Data File : PL095532.D
 Signal(s) : Signal #1: ECD1A.ch Signal #2: ECD2B.ch
 Acq On : 05 May 2025 13:25
 Operator : AR\AJ
 Sample : PB167854BS
 Misc :
 ALS Vial : 6 Sample Multiplier: 1

Instrument :
 ECD_L
 ClientSampleId :
 PB167854BS

Integration File signal 1: autoint1.e
 Integration File signal 2: autoint2.e
 Quant Time: May 06 01:38:53 2025
 Quant Method : Z:\pestpcbsrv\HPCHEM1\ECD_L\methods\PL042325.M
 Quant Title : GC Extractables
 QLast Update : Wed Apr 23 16:23:18 2025
 Response via : Initial Calibration
 Integrator: ChemStation

Volume Inj. : 1 µl
 Signal #1 Phase : ZB-MR1 Signal #2 Phase: ZB-MR2
 Signal #1 Info : 30M x 0.32mm x0.5 Signal #2 Info : 30M x 0.32mm x0.25µm

Compound	RT#1	RT#2	Resp#1	Resp#2	ng/ml	ng/ml

System Monitoring Compounds						
1) SA Tetrachlo...	3.595	2.910	59205924	75217001	18.135	23.655 #
28) SA Decachlor...	9.118	8.087	57125092	66896101	20.617	22.606
Target Compounds						
2) A alpha-BHC	4.046	3.419	225.3E6	272.7E6	45.473	61.294 #
3) MA gamma-BHC...	4.377	3.752	214.3E6	258.2E6	45.258	58.698 #
4) MA Heptachlor	4.974	4.106	207.0E6	247.5E6	45.254	56.812 #
5) MB Aldrin	5.316	4.391	223.2E6	250.1E6	48.603	60.770 #
6) B beta-BHC	4.562	4.046	93978270	114.0E6	45.455	54.929
7) B delta-BHC	4.809	4.282	213.4E6	262.6E6	45.888m	59.917 #
8) B Heptachlo...	5.737	4.894	203.6E6	225.8E6	50.828	58.469
9) A Endosulfan I	6.119	5.267	189.5E6	215.5E6	49.904m	58.871
10) B gamma-Chl...	5.991	5.145	208.1E6	235.8E6	51.007	58.187m
11) B alpha-Chl...	6.072	5.211	205.2E6	229.0E6	50.473	57.513
12) B 4,4'-DDE	6.239	5.397	193.7E6	222.2E6	49.398m	54.629
13) MA Dieldrin	6.392	5.532	195.0E6	238.9E6	50.579m	58.743
14) MA Endrin	6.620	5.808	152.6E6	186.0E6	47.904	51.093
15) B Endosulfa...	6.832	6.097	168.3E6	208.2E6	52.725	57.977
16) A 4,4'-DDD	6.750	5.949	152.3E6	199.8E6	53.787	61.151
17) MA 4,4'-DDT	7.065	6.202	137.6E6	179.0E6	48.316	52.100m
18) B Endrin al...	6.961	6.275	121.8E6	156.2E6	52.484	59.783
19) B Endosulfa...	7.195	6.498	143.0E6	192.6E6	51.031	58.045
20) A Methoxychlor	7.536	6.771	62467040	98508784	44.775	51.645m
21) B Endrin ke...	7.675	7.004	150.2E6	226.4E6	52.687	64.305
22) Mirex	8.157	7.198	117.9E6	161.3E6	49.637	55.954m

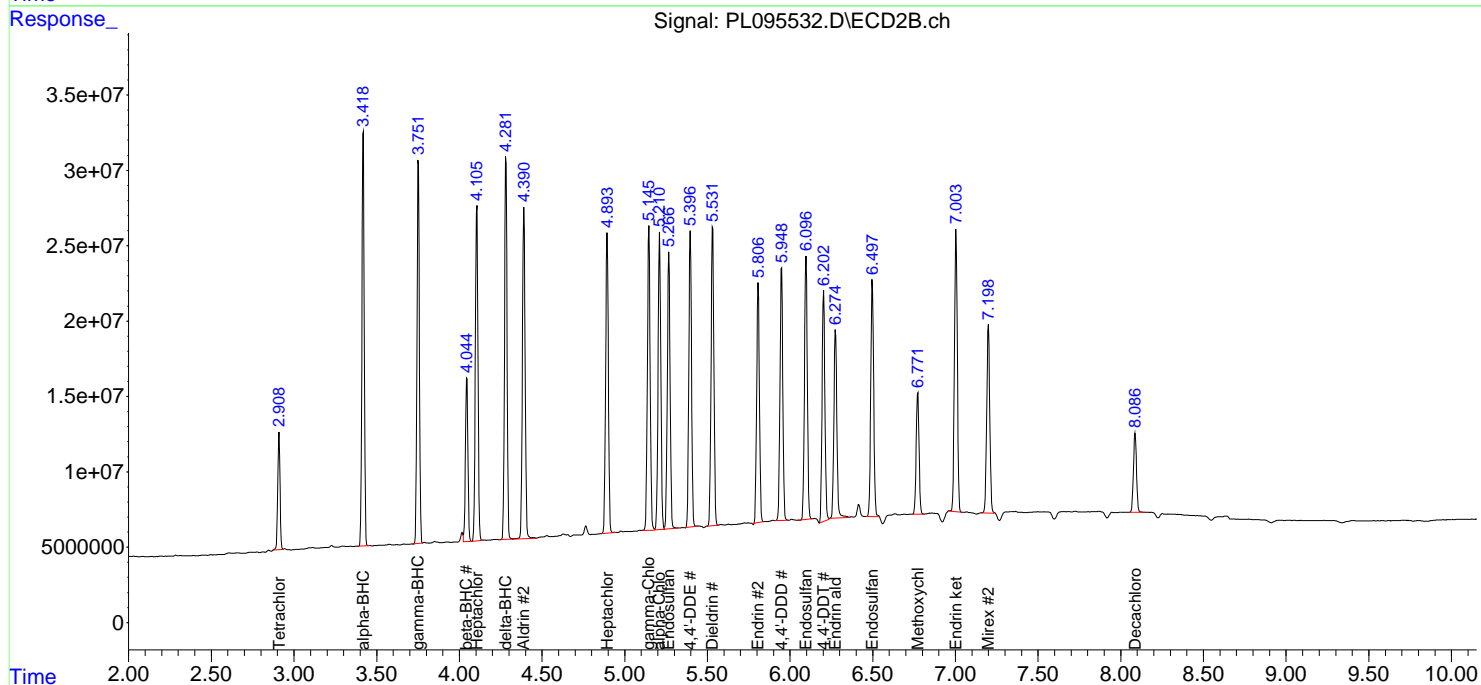
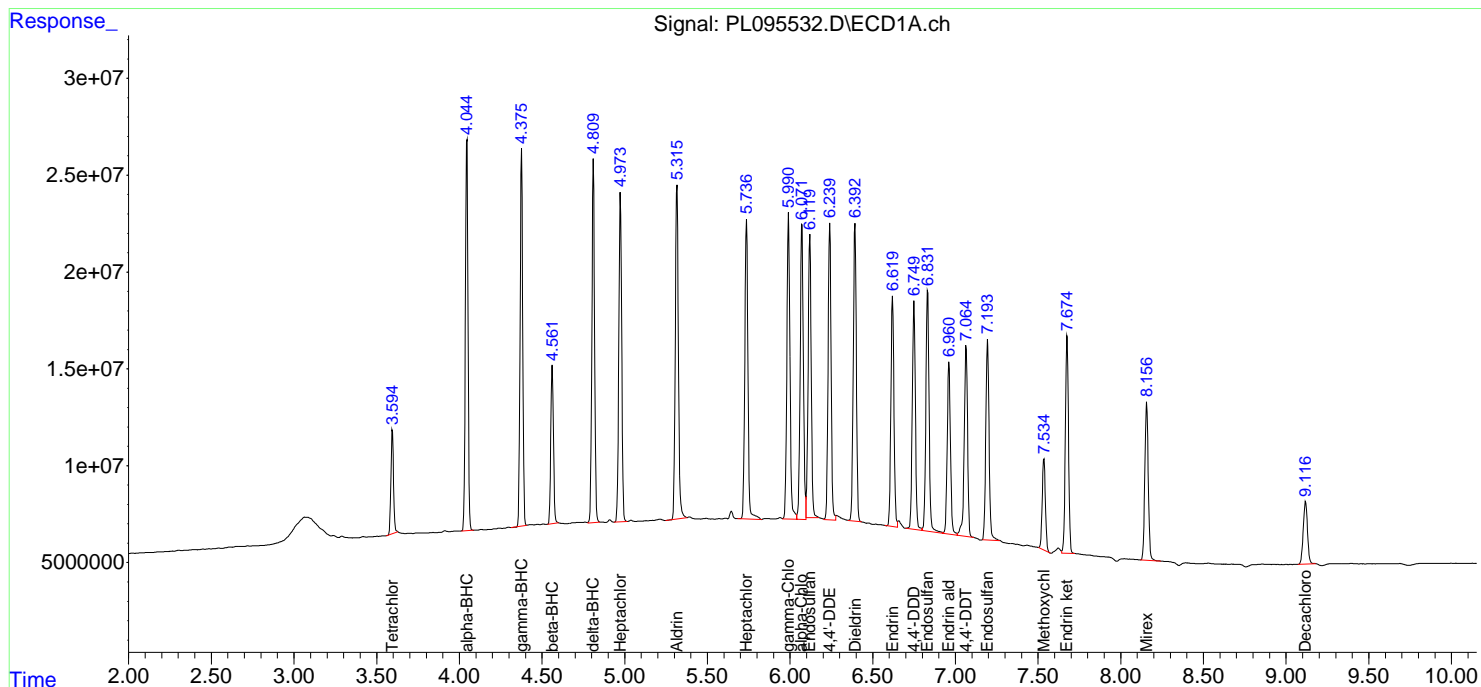
(f)=RT Delta > 1/2 Window (#)=Amounts differ by > 25% (m)=manual int.

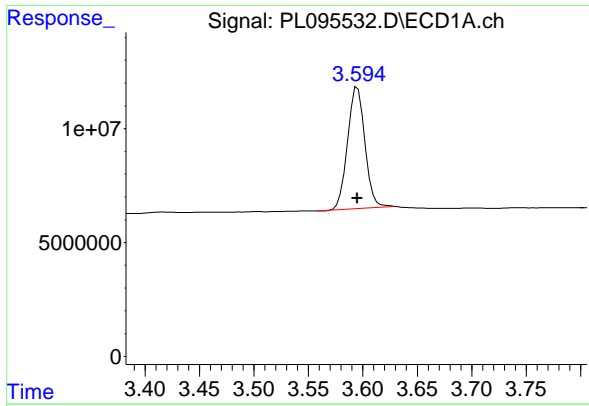
Data Path : Z:\pestpcbsrv\HPCHEM1\ECD_L\Data\PL050625\
 Data File : PL095532.D
 Signal(s) : Signal #1: ECD1A.ch Signal #2: ECD2B.ch
 Acq On : 05 May 2025 13:25
 Operator : AR\AJ
 Sample : PB167854BS
 Misc :
 ALS Vial : 6 Sample Multiplier: 1

Instrument :
 ECD_L
 ClientSampleId :
 PB167854BS

Integration File signal 1: autoint1.e
 Integration File signal 2: autoint2.e
 Quant Time: May 06 01:38:53 2025
 Quant Method : Z:\pestpcbsrv\HPCHEM1\ECD_L\methods\PL042325.M
 Quant Title : GC Extractables
 QLast Update : Wed Apr 23 16:23:18 2025
 Response via : Initial Calibration
 Integrator: ChemStation

Volume Inj. : 1 µl
 Signal #1 Phase : ZB-MR1 Signal #2 Phase: ZB-MR2
 Signal #1 Info : 30M x 0.32mm x0.5 Signal #2 Info : 30M x 0.32mm x0.25µm

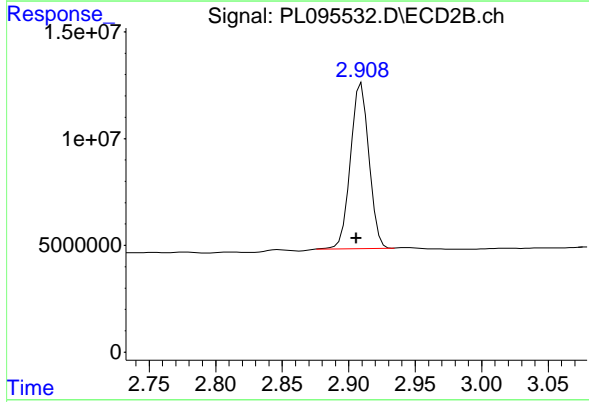




#1 Tetrachloro-m-xylene

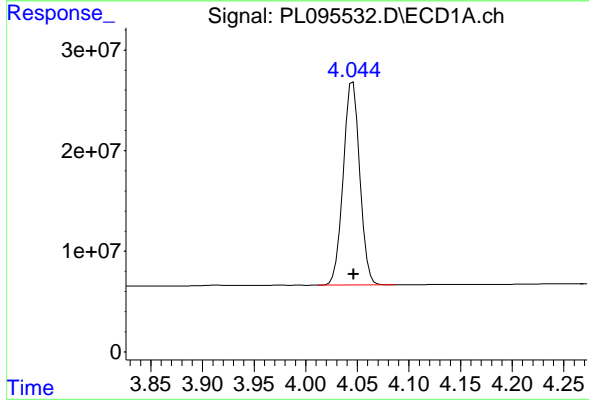
R.T.: 3.595 min
 Delta R.T.: 0.000 min
 Response: 59205924
 Conc: 18.14 ng/ml

Instrument :
 ECD_L
 ClientSampleId :
 PB167854BS



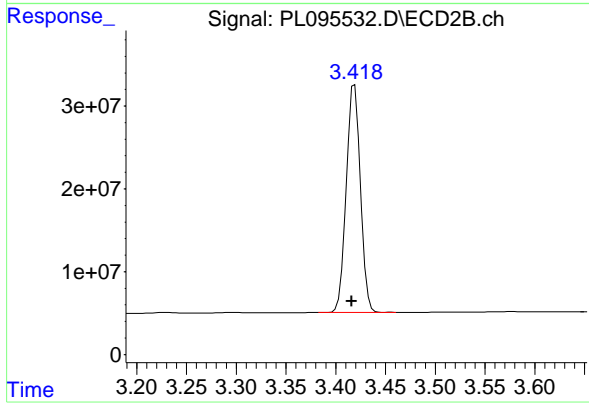
#1 Tetrachloro-m-xylene

R.T.: 2.910 min
 Delta R.T.: 0.004 min
 Response: 75217001
 Conc: 23.65 ng/ml



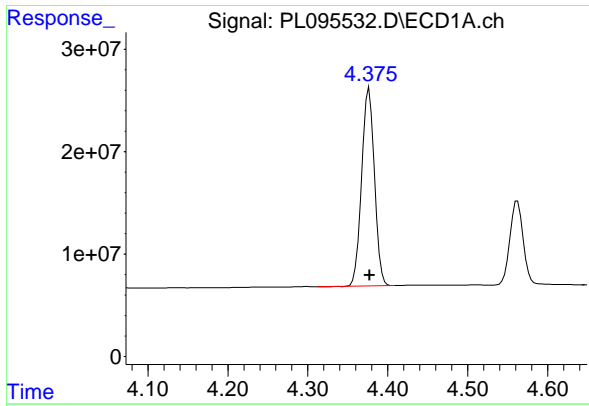
#2 alpha-BHC

R.T.: 4.046 min
 Delta R.T.: 0.000 min
 Response: 225264012
 Conc: 45.47 ng/ml



#2 alpha-BHC

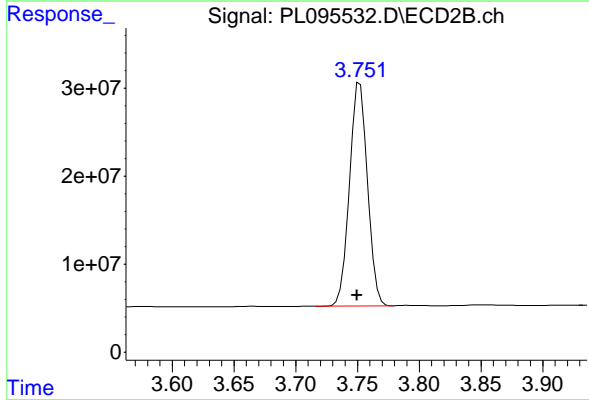
R.T.: 3.419 min
 Delta R.T.: 0.003 min
 Response: 272680033
 Conc: 61.29 ng/ml



#3 gamma-BHC (Lindane)

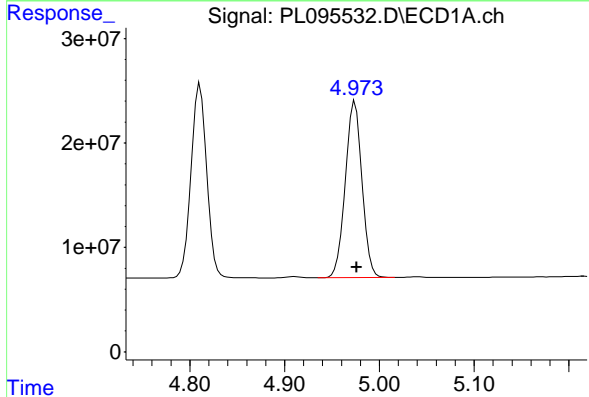
R.T.: 4.377 min
 Delta R.T.: 0.000 min
 Response: 214250372
 Conc: 45.26 ng/ml

Instrument :
 ECD_L
 ClientSampleId :
 PB167854BS



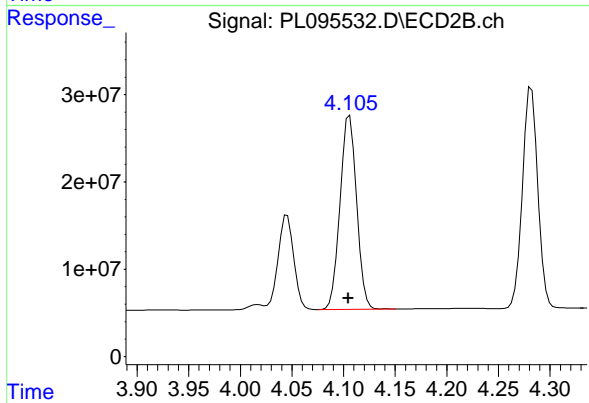
#3 gamma-BHC (Lindane)

R.T.: 3.752 min
 Delta R.T.: 0.002 min
 Response: 258166044
 Conc: 58.70 ng/ml



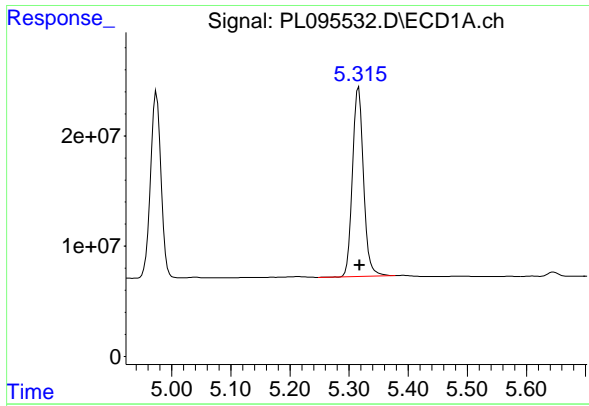
#4 Heptachlor

R.T.: 4.974 min
 Delta R.T.: -0.002 min
 Response: 207011288
 Conc: 45.25 ng/ml



#4 Heptachlor

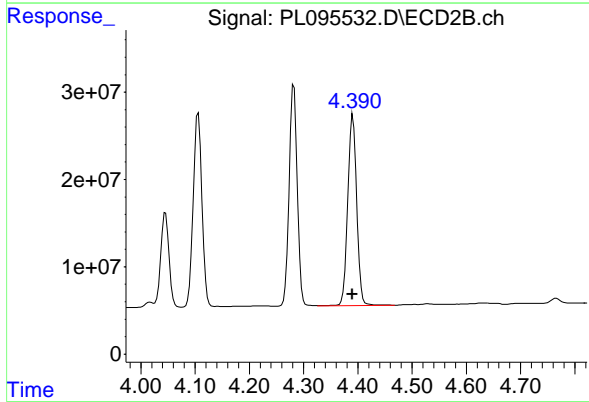
R.T.: 4.106 min
 Delta R.T.: 0.001 min
 Response: 247513256
 Conc: 56.81 ng/ml



#5 Aldrin

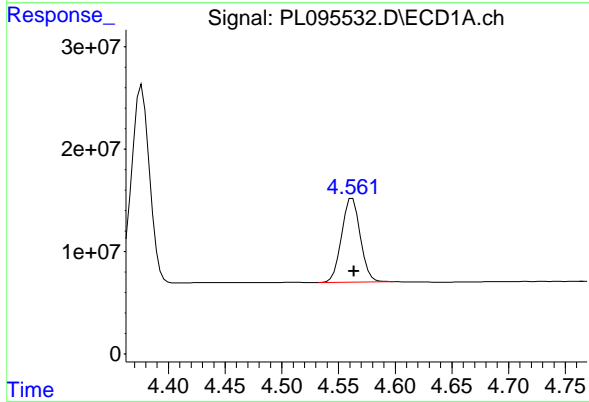
R.T.: 5.316 min
 Delta R.T.: -0.002 min
 Response: 223234915
 Conc: 48.60 ng/ml

Instrument :
 ECD_L
 ClientSampleId :
 PB167854BS



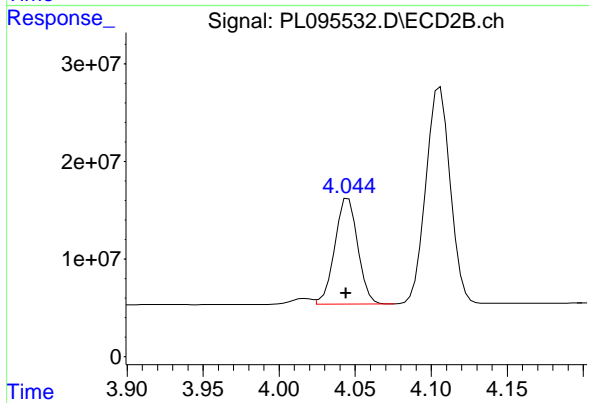
#5 Aldrin

R.T.: 4.391 min
 Delta R.T.: 0.000 min
 Response: 250111035
 Conc: 60.77 ng/ml



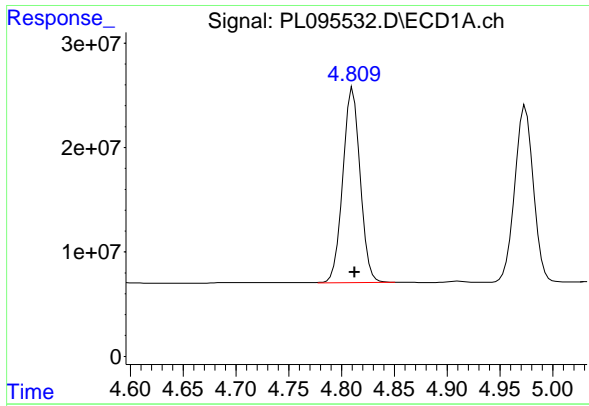
#6 beta-BHC

R.T.: 4.562 min
 Delta R.T.: -0.001 min
 Response: 93978270
 Conc: 45.45 ng/ml



#6 beta-BHC

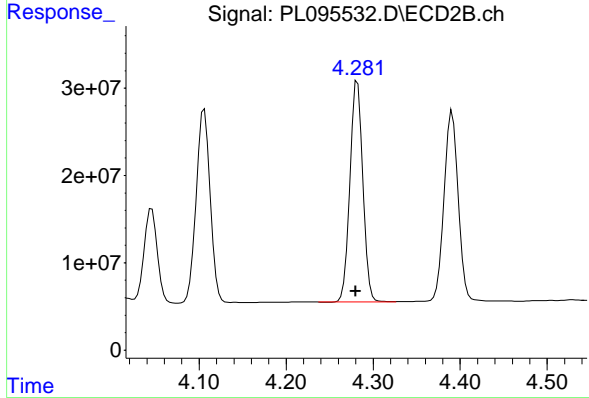
R.T.: 4.046 min
 Delta R.T.: 0.002 min
 Response: 114025774
 Conc: 54.93 ng/ml



#7 delta-BHC

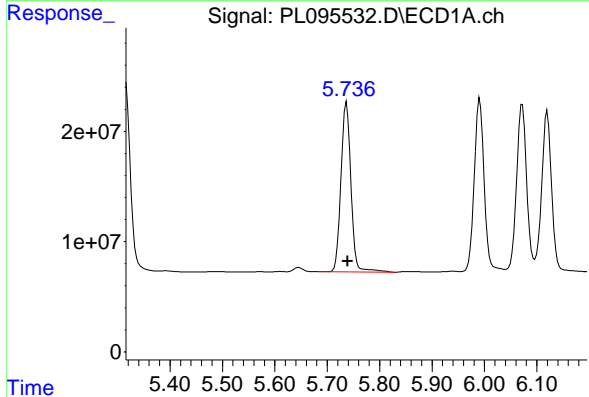
R.T.: 4.809 min
 Delta R.T.: -0.003 min
 Response: 213412359
 Conc: 45.89 ng/ml

Instrument :
 ECD_L
 ClientSampleId :
 PB167854BS



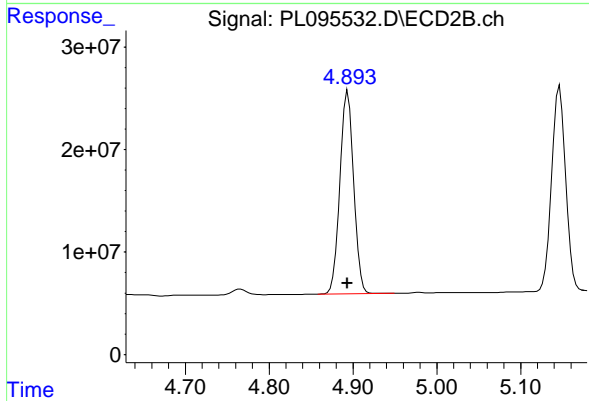
#7 delta-BHC

R.T.: 4.282 min
 Delta R.T.: 0.002 min
 Response: 262552092
 Conc: 59.92 ng/ml



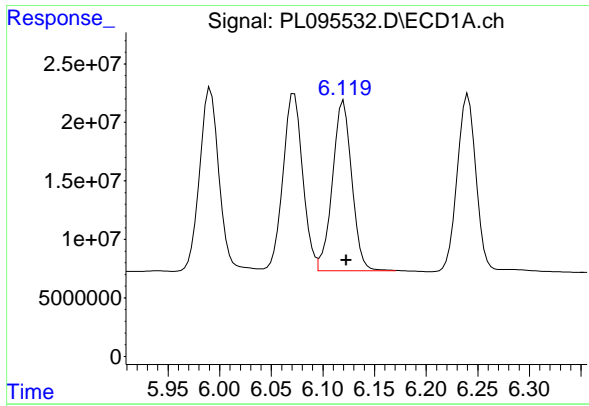
#8 Heptachlor epoxide

R.T.: 5.737 min
 Delta R.T.: -0.002 min
 Response: 203574483
 Conc: 50.83 ng/ml



#8 Heptachlor epoxide

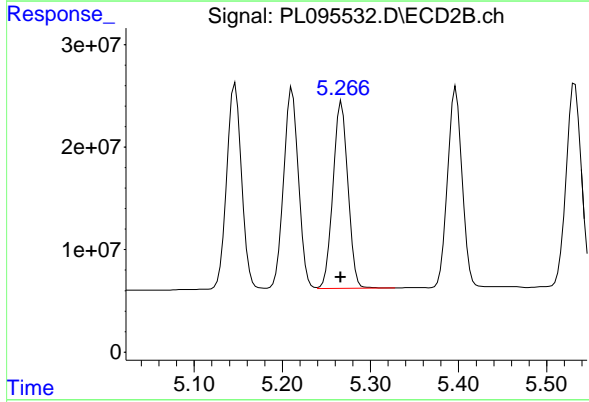
R.T.: 4.894 min
 Delta R.T.: 0.000 min
 Response: 225846599
 Conc: 58.47 ng/ml



#9 Endosulfan I

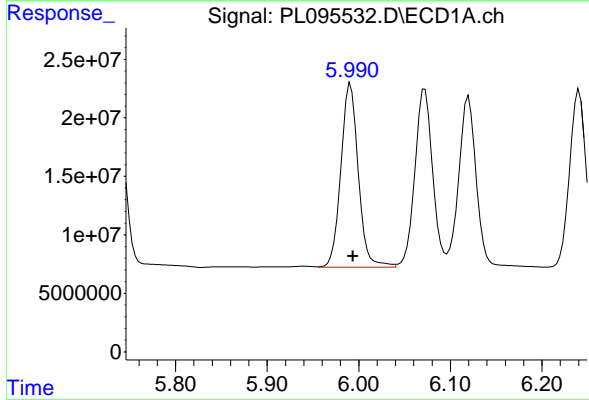
R.T.: 6.119 min
 Delta R.T.: -0.004 min
 Response: 189510920
 Conc: 49.90 ng/ml

Instrument :
 ECD_L
 ClientSampleId :
 PB167854BS



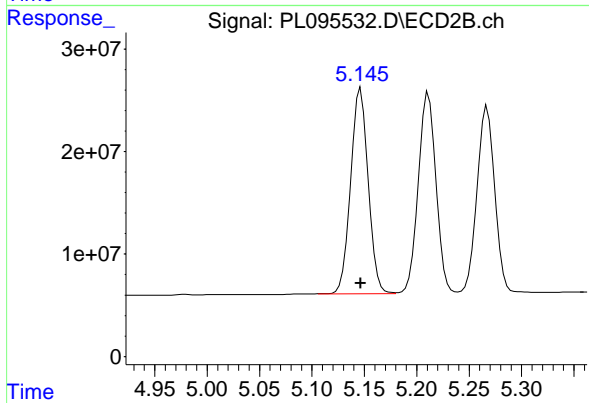
#9 Endosulfan I

R.T.: 5.267 min
 Delta R.T.: 0.000 min
 Response: 215493118
 Conc: 58.87 ng/ml



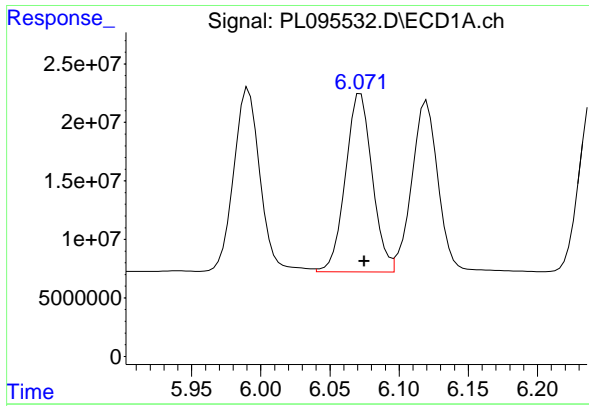
#10 gamma-Chlordane

R.T.: 5.991 min
 Delta R.T.: -0.002 min
 Response: 208075693
 Conc: 51.01 ng/ml



#10 gamma-Chlordane

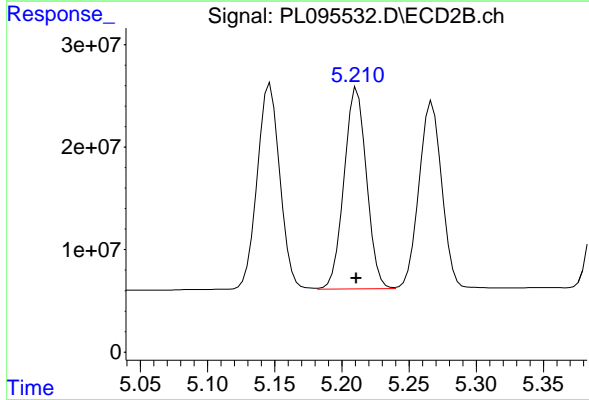
R.T.: 5.145 min
 Delta R.T.: -0.001 min
 Response: 235811693
 Conc: 58.19 ng/ml m



#11 alpha-Chlordane

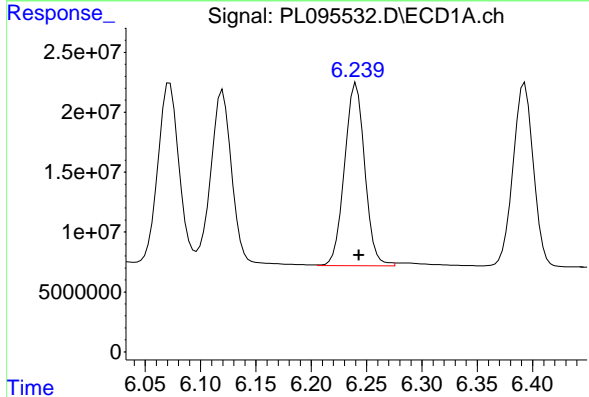
R.T.: 6.072 min
 Delta R.T.: -0.003 min
 Response: 205229272
 Conc: 50.47 ng/ml

Instrument :
 ECD_L
 ClientSampleId :
 PB167854BS



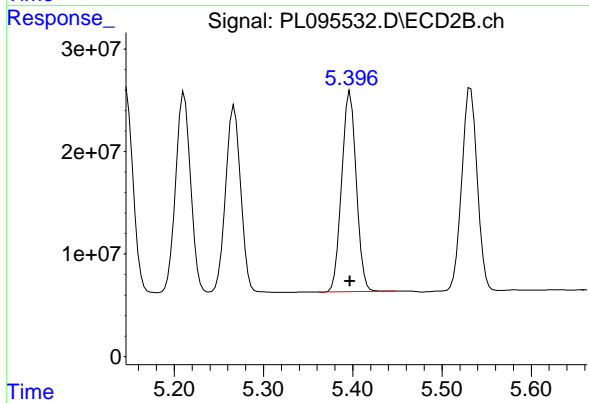
#11 alpha-Chlordane

R.T.: 5.211 min
 Delta R.T.: 0.000 min
 Response: 228963999
 Conc: 57.51 ng/ml



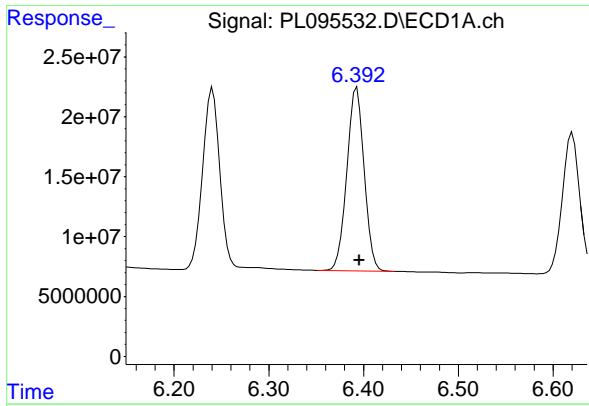
#12 4,4'-DDE

R.T.: 6.239 min
 Delta R.T.: -0.004 min
 Response: 193665549
 Conc: 49.40 ng/ml m



#12 4,4'-DDE

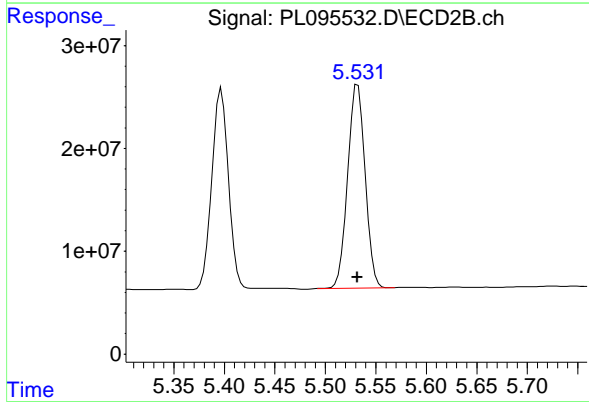
R.T.: 5.397 min
 Delta R.T.: 0.000 min
 Response: 222176370
 Conc: 54.63 ng/ml



#13 Dieldrin

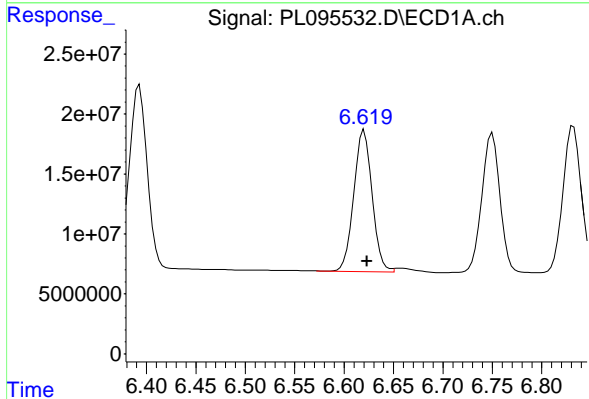
R.T.: 6.392 min
 Delta R.T.: -0.004 min
 Response: 194973532
 Conc: 50.58 ng/ml

Instrument :
 ECD_L
 ClientSampleId :
 PB167854BS



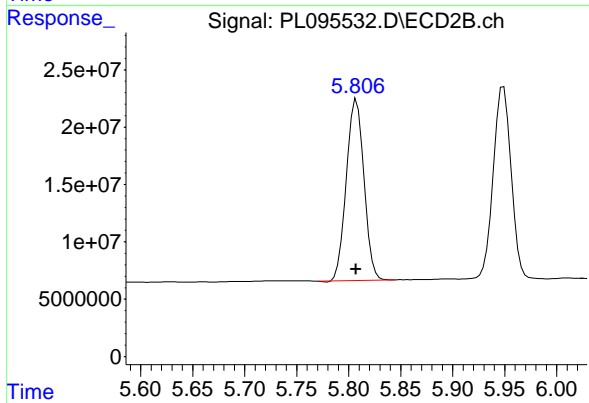
#13 Dieldrin

R.T.: 5.532 min
 Delta R.T.: 0.000 min
 Response: 238913582
 Conc: 58.74 ng/ml



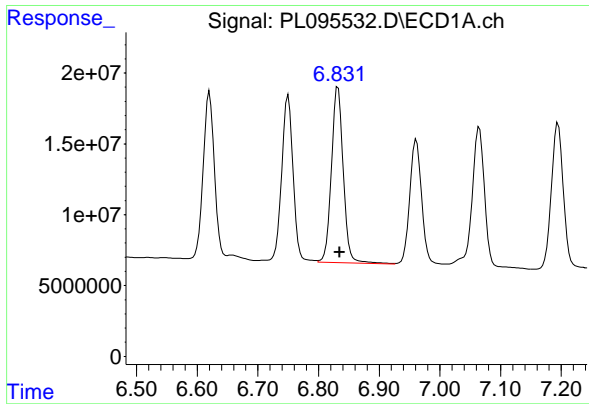
#14 Endrin

R.T.: 6.620 min
 Delta R.T.: -0.003 min
 Response: 152560839
 Conc: 47.90 ng/ml



#14 Endrin

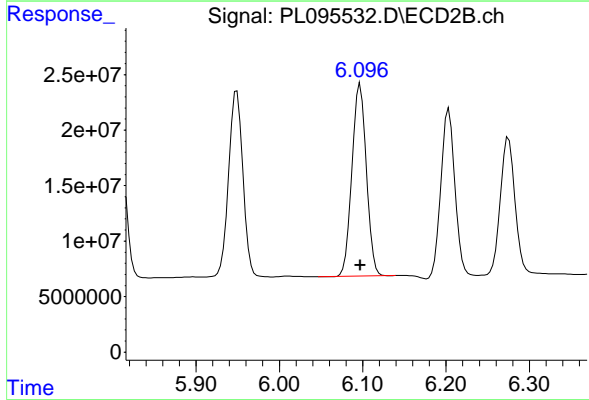
R.T.: 5.808 min
 Delta R.T.: 0.000 min
 Response: 186014130
 Conc: 51.09 ng/ml



#15 Endosulfan II

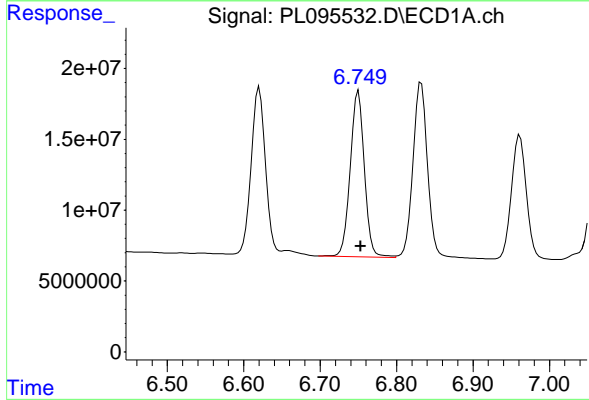
R.T.: 6.832 min
 Delta R.T.: -0.003 min
 Response: 168306143
 Conc: 52.72 ng/ml

Instrument :
 ECD_L
 ClientSampleId :
 PB167854BS



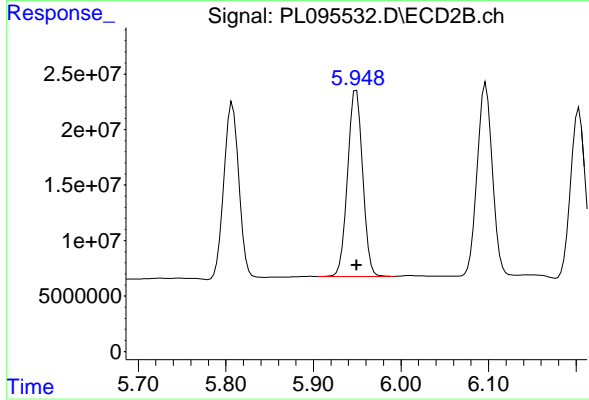
#15 Endosulfan II

R.T.: 6.097 min
 Delta R.T.: 0.000 min
 Response: 208200241
 Conc: 57.98 ng/ml



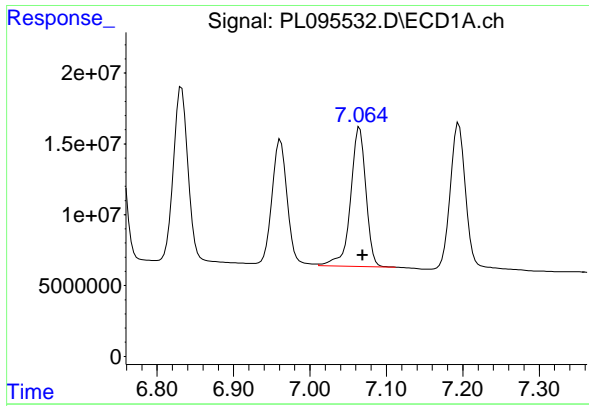
#16 4,4'-DDD

R.T.: 6.750 min
 Delta R.T.: -0.003 min
 Response: 152269168
 Conc: 53.79 ng/ml



#16 4,4'-DDD

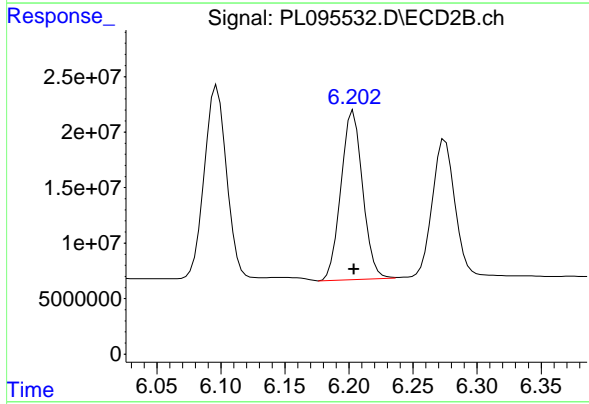
R.T.: 5.949 min
 Delta R.T.: 0.000 min
 Response: 199767830
 Conc: 61.15 ng/ml



#17 4,4' -DDT

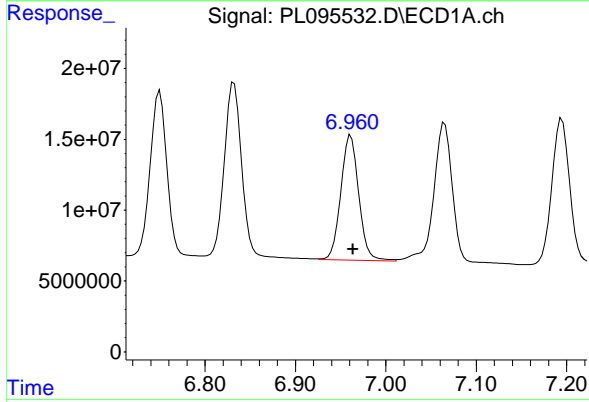
R.T.: 7.065 min
 Delta R.T.: -0.004 min
 Response: 137631752
 Conc: 48.32 ng/ml

Instrument :
 ECD_L
 ClientSampleId :
 PB167854BS



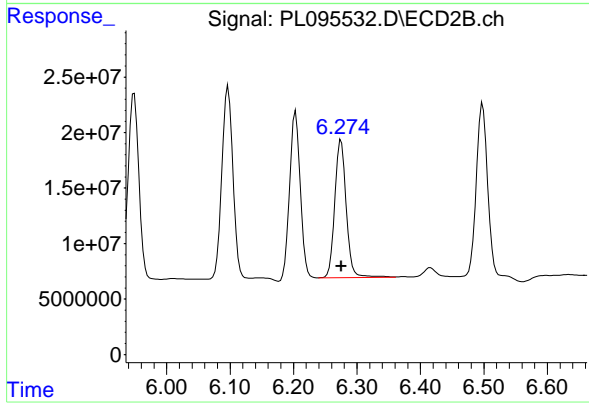
#17 4,4' -DDT

R.T.: 6.202 min
 Delta R.T.: -0.002 min
 Response: 179023847
 Conc: 52.10 ng/ml m



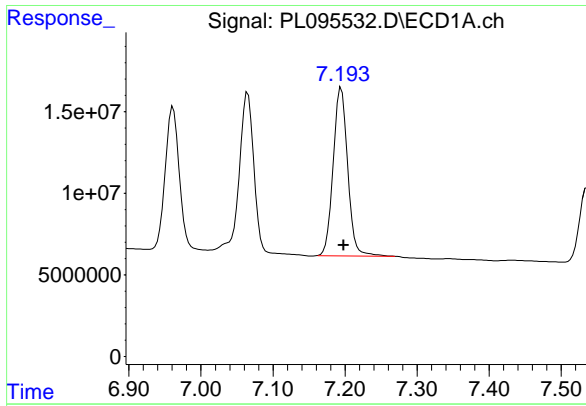
#18 Endrin aldehyde

R.T.: 6.961 min
 Delta R.T.: -0.002 min
 Response: 121804709
 Conc: 52.48 ng/ml



#18 Endrin aldehyde

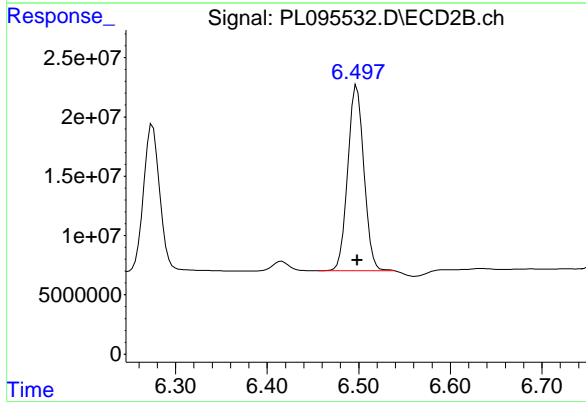
R.T.: 6.275 min
 Delta R.T.: 0.000 min
 Response: 156222153
 Conc: 59.78 ng/ml



#19 Endosulfan Sulfate

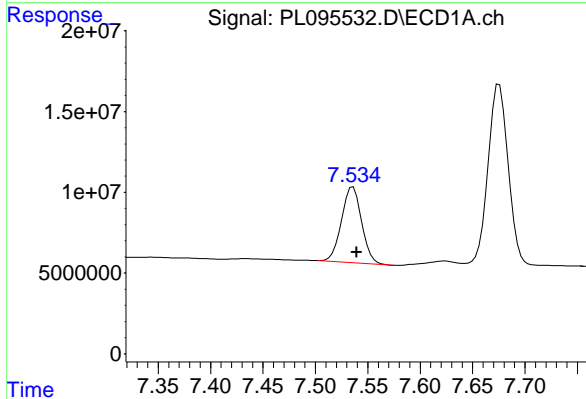
R.T.: 7.195 min
 Delta R.T.: -0.003 min
 Response: 142977143
 Conc: 51.03 ng/ml

Instrument :
 ECD_L
 ClientSampleId :
 PB167854BS



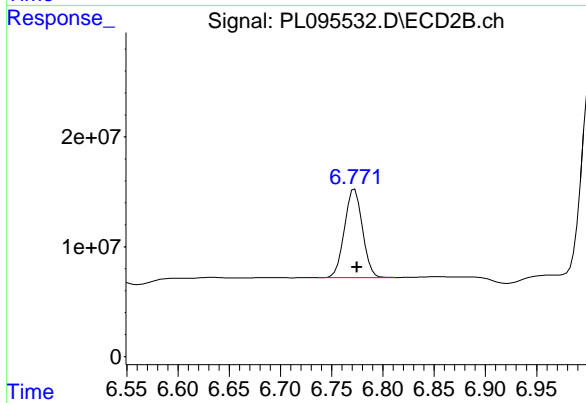
#19 Endosulfan Sulfate

R.T.: 6.498 min
 Delta R.T.: 0.000 min
 Response: 192590373
 Conc: 58.05 ng/ml



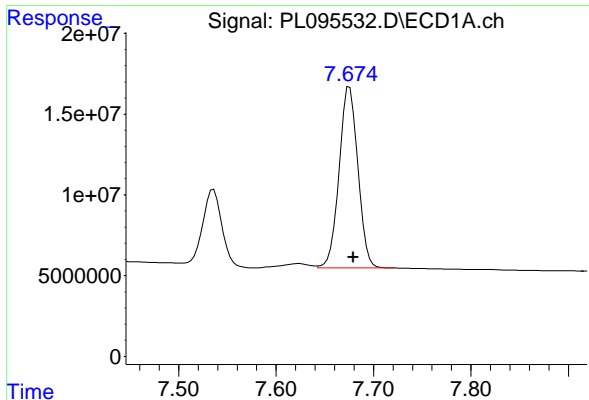
#20 Methoxychlor

R.T.: 7.536 min
 Delta R.T.: -0.004 min
 Response: 62467040
 Conc: 44.78 ng/ml



#20 Methoxychlor

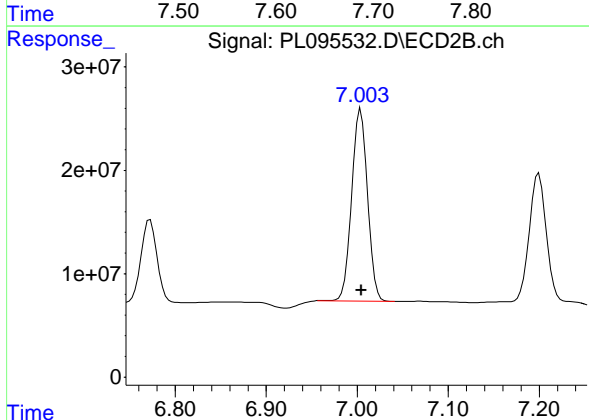
R.T.: 6.771 min
 Delta R.T.: -0.004 min
 Response: 98508784
 Conc: 51.64 ng/ml m



#21 Endrin ketone

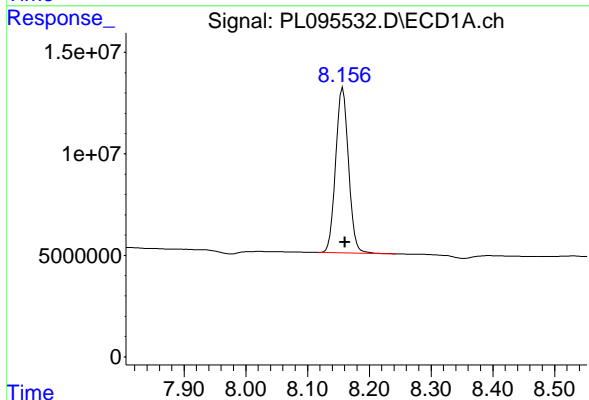
R.T.: 7.675 min
 Delta R.T.: -0.004 min
 Response: 150204921
 Conc: 52.69 ng/ml

Instrument : ECD_L
 ClientSampleId : PB167854BS



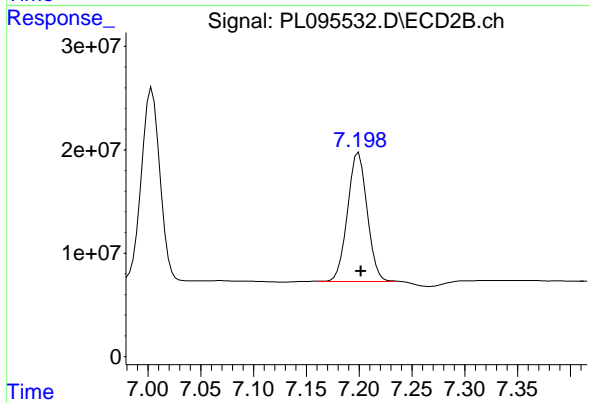
#21 Endrin ketone

R.T.: 7.004 min
 Delta R.T.: 0.000 min
 Response: 226438108
 Conc: 64.31 ng/ml



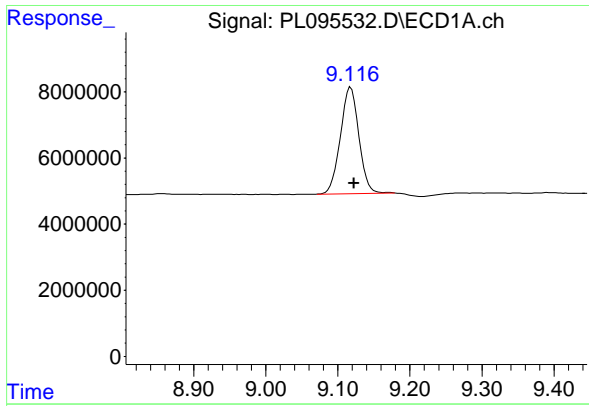
#22 Mirex

R.T.: 8.157 min
 Delta R.T.: -0.004 min
 Response: 117938847
 Conc: 49.64 ng/ml



#22 Mirex

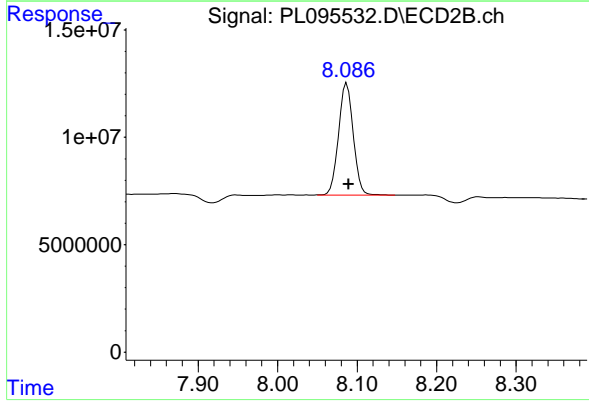
R.T.: 7.198 min
 Delta R.T.: -0.003 min
 Response: 161282373
 Conc: 55.95 ng/ml m



#28 Decachlorobiphenyl

R.T.: 9.118 min
Delta R.T.: -0.004 min
Response: 57125092
Conc: 20.62 ng/ml

Instrument :
ECD_L
ClientSampleId :
PB167854BS



#28 Decachlorobiphenyl

R.T.: 8.087 min
Delta R.T.: -0.002 min
Response: 66896101
Conc: 22.61 ng/ml