

Data Path : Z:\pestpcbsrv\HPCHEM1\ECD\_L\Data\PL050625\  
 Data File : PL095539.D  
 Signal(s) : Signal #1: ECD1A.ch Signal #2: ECD2B.ch  
 Acq On : 05 May 2025 15:06  
 Operator : AR\AJ  
 Sample : Q1936-01MS  
 Misc :  
 ALS Vial : 13 Sample Multiplier: 1

Instrument :  
 ECD\_L  
 ClientSampleId :  
 SMALL-PILE-AMS

Integration File signal 1: autoint1.e  
 Integration File signal 2: autoint2.e  
 Quant Time: May 06 01:40:35 2025  
 Quant Method : Z:\pestpcbsrv\HPCHEM1\ECD\_L\methods\PL042325.M  
 Quant Title : GC Extractables  
 QLast Update : Wed Apr 23 16:23:18 2025  
 Response via : Initial Calibration  
 Integrator: ChemStation

Volume Inj. : 1 µl  
 Signal #1 Phase : ZB-MR2 Signal #2 Phase: ZB-MR2  
 Signal #1 Info : 30M x 0.32mm x0.5 Signal #2 Info : 30M x 0.32mm x0.25µm

Compound	RT#1	RT#2	Resp#1	Resp#2	ng/ml	ng/ml
-----						
System Monitoring Compounds						
1) SA Tetrachlo...	3.593	2.909	40049031	52613205	12.267	16.546 #
28) SA Decachlor...	9.114	8.084	33057669	42851827	11.931	14.481
Target Compounds						
2) A alpha-BHC	4.043	3.418	243.7E6	312.6E6	49.197	70.262 #
3) MA gamma-BHC...	4.373	3.752	233.4E6	293.1E6	49.293m	66.646 #
4) MA Heptachlor	4.972	4.105	222.8E6	276.2E6	48.701	63.400 #
5) MB Aldrin	5.313	4.390	240.8E6	278.9E6	52.419m	67.770 #
6) B beta-BHC	4.560	4.045	99701701	128.7E6	48.223	61.983 #
7) B delta-BHC	4.807	4.281	228.3E6	296.3E6	49.099m	67.616 #
8) B Heptachlo...	5.734	4.893	212.0E6	253.7E6	52.930	65.671
9) A Endosulfan I	6.117	5.265	201.7E6	242.4E6	53.106	66.231
10) B gamma-Chl...	5.987	5.144	214.9E6	263.7E6	52.668m	65.064m
11) B alpha-Chl...	6.070	5.209	214.0E6	257.0E6	52.638	64.566
12) B 4,4'-DDE	6.238	5.395	205.8E6	259.3E6	52.497	63.764
13) MA Dieldrin	6.390	5.531	201.9E6	266.9E6	52.377	65.632 #
14) MA Endrin	6.618	5.805	167.0E6	234.3E6	52.431	64.357
15) B Endosulfa...	6.830	6.095	173.5E6	236.6E6	54.356	65.879
16) A 4,4'-DDD	6.748	5.947	158.7E6	222.8E6	56.064	68.212
17) MA 4,4'-DDT	7.063	6.201	140.4E6	211.8E6	49.293	61.625 #
18) B Endrin al...	6.959	6.273	122.5E6	166.9E6	52.799	63.874
19) B Endosulfa...	7.192	6.495	147.1E6	205.9E6	52.490	62.043m
20) A Methoxychlor	7.533	6.769	64119642	109.4E6	45.960	57.373m
21) B Endrin ke...	7.673	7.002	150.1E6	243.7E6	52.655	69.207 #
22) Mirex	8.155	7.197	119.5E6	175.3E6	50.295	60.816m

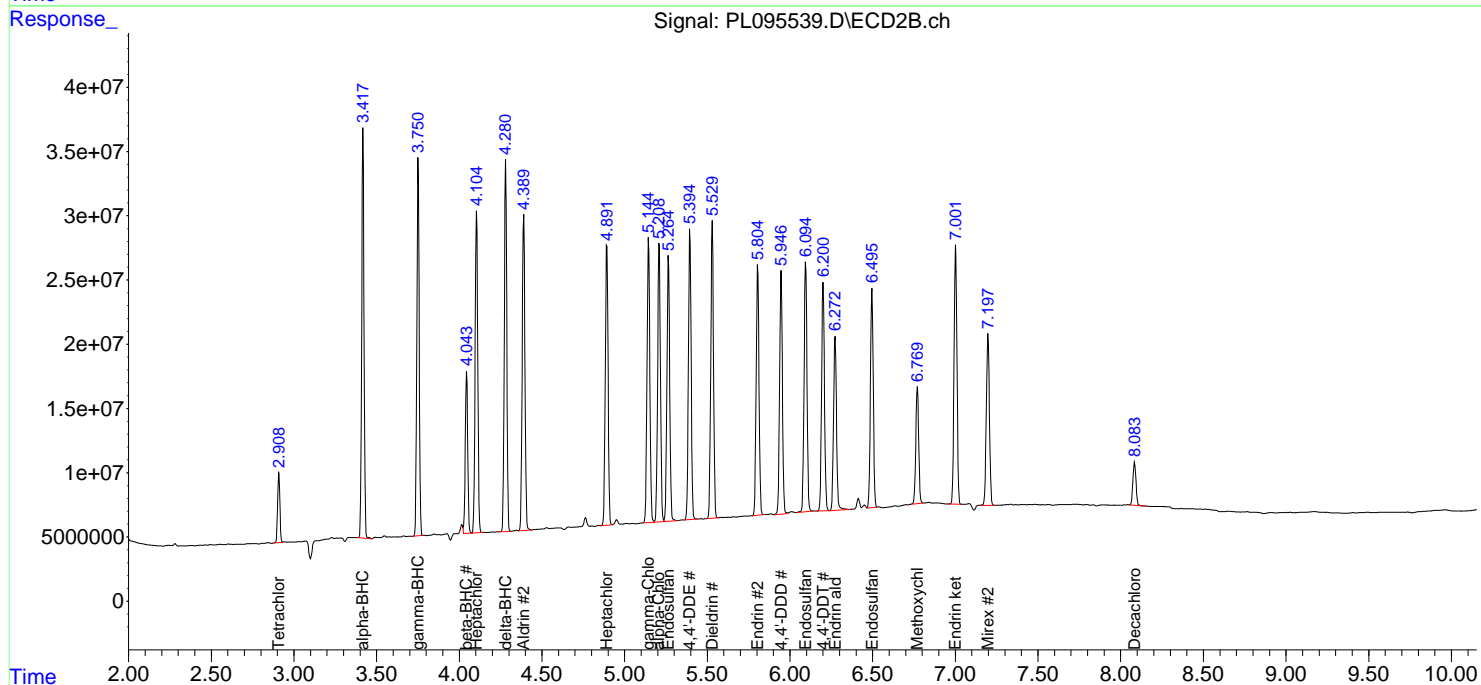
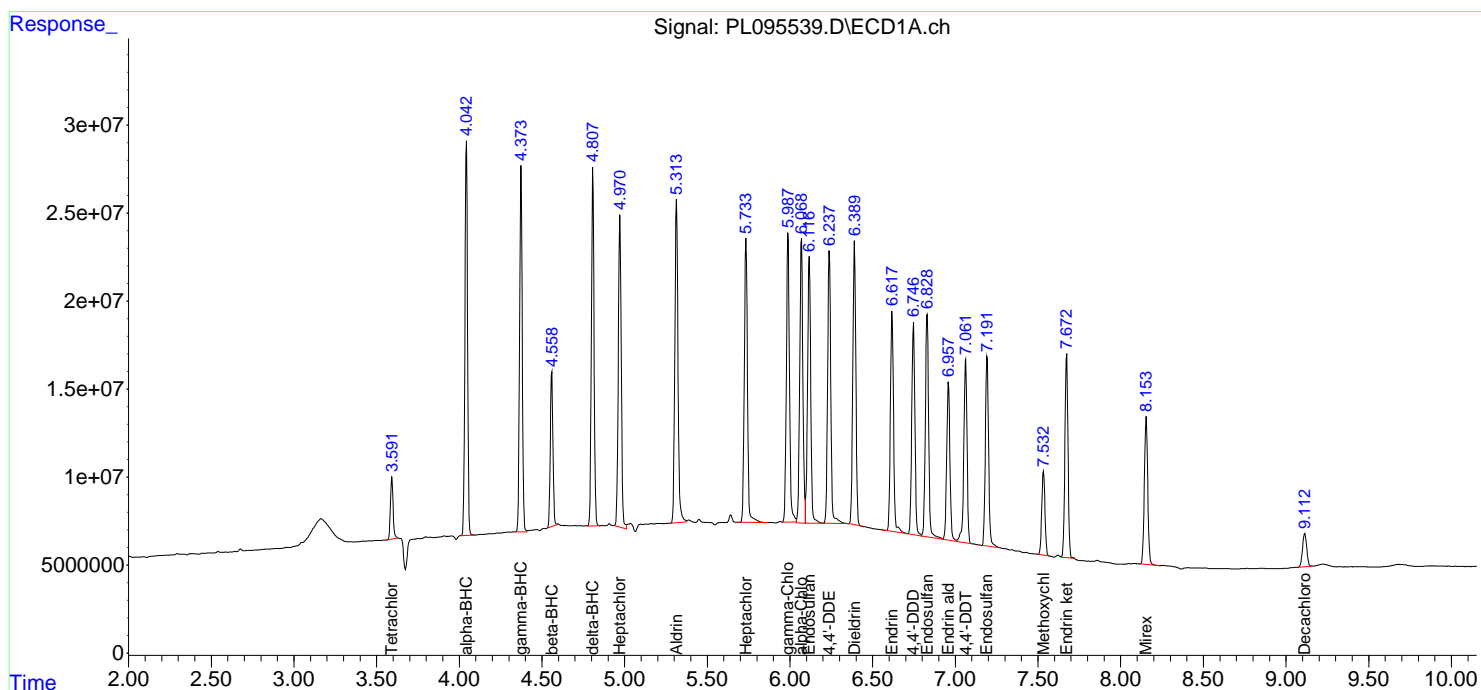
(f)=RT Delta > 1/2 Window (#)=Amounts differ by > 25% (m)=manual int.

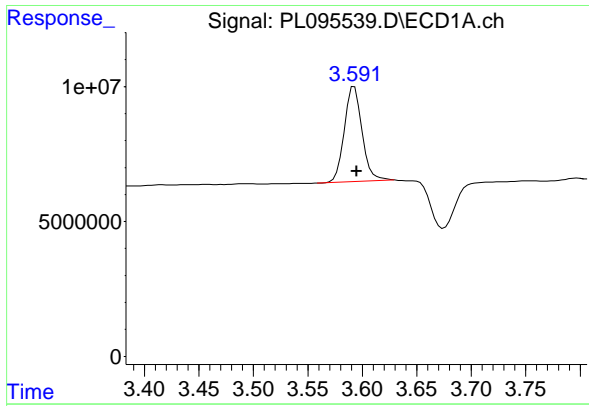
Data Path : Z:\pestpcbsrv\HPCHEM1\ECD\_L\Data\PL050625\  
 Data File : PL095539.D  
 Signal(s) : Signal #1: ECD1A.ch Signal #2: ECD2B.ch  
 Acq On : 05 May 2025 15:06  
 Operator : AR\AJ  
 Sample : Q1936-01MS  
 Misc :  
 ALS Vial : 13 Sample Multiplier: 1

Instrument :  
 ECD\_L  
 ClientSampleId :  
 SMALL-PILE-AMS

Integration File signal 1: autoint1.e  
 Integration File signal 2: autoint2.e  
 Quant Time: May 06 01:40:35 2025  
 Quant Method : Z:\pestpcbsrv\HPCHEM1\ECD\_L\methods\PL042325.M  
 Quant Title : GC Extractables  
 QLast Update : Wed Apr 23 16:23:18 2025  
 Response via : Initial Calibration  
 Integrator: ChemStation

Volume Inj. : 1 µl  
 Signal #1 Phase : ZB-MR1 Signal #2 Phase: ZB-MR2  
 Signal #1 Info : 30M x 0.32mm x0.5 Signal #2 Info : 30M x 0.32mm x0.25µm

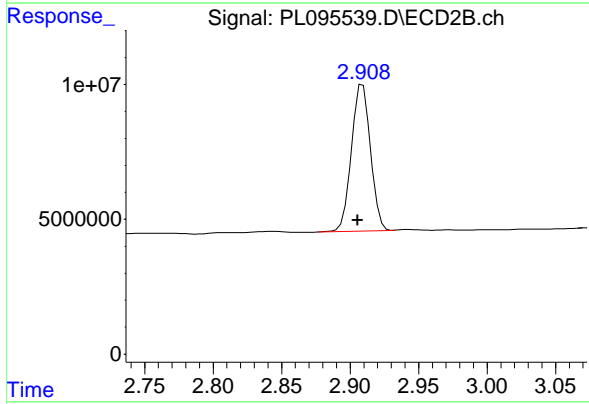




#1 Tetrachloro-m-xylene

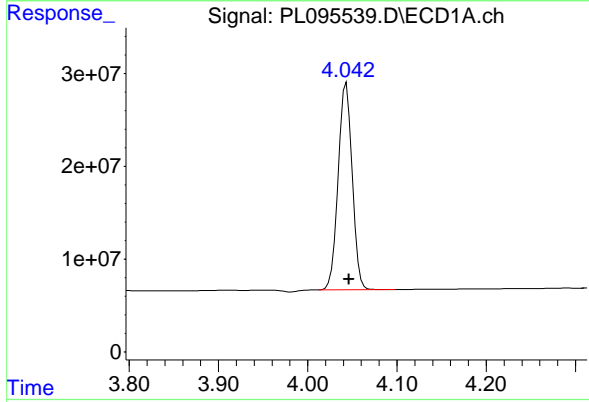
R.T.: 3.593 min  
 Delta R.T.: -0.002 min  
 Response: 40049031  
 Conc: 12.27 ng/ml

Instrument :  
 ECD\_L  
 ClientSampleId :  
 SMALL-PILE-AMS



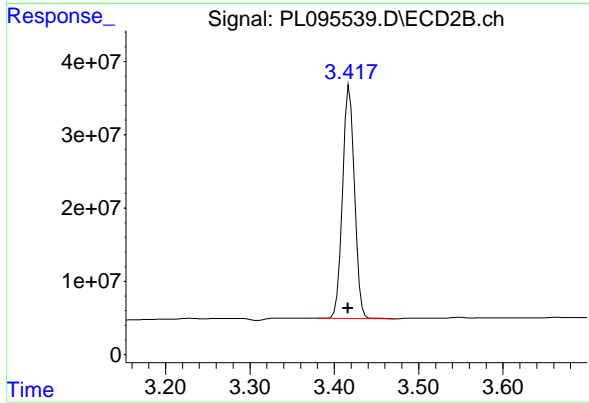
#1 Tetrachloro-m-xylene

R.T.: 2.909 min  
 Delta R.T.: 0.004 min  
 Response: 52613205  
 Conc: 16.55 ng/ml



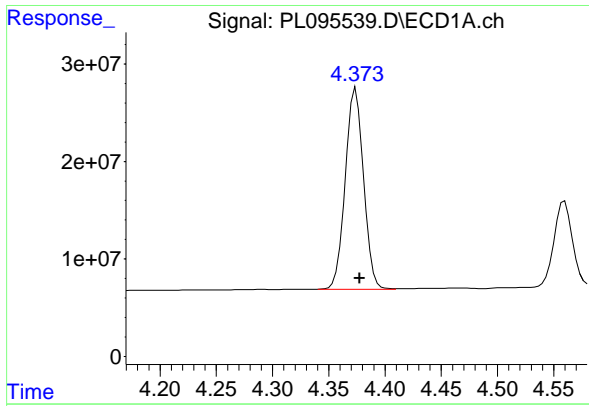
#2 alpha-BHC

R.T.: 4.043 min  
 Delta R.T.: -0.003 min  
 Response: 243709402  
 Conc: 49.20 ng/ml



#2 alpha-BHC

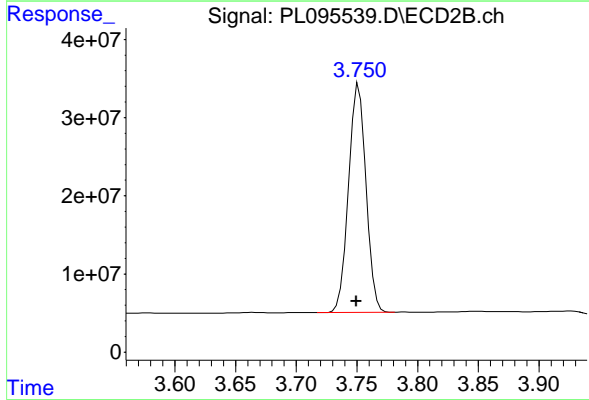
R.T.: 3.418 min  
 Delta R.T.: 0.002 min  
 Response: 312574112  
 Conc: 70.26 ng/ml



#3 gamma-BHC (Lindane)

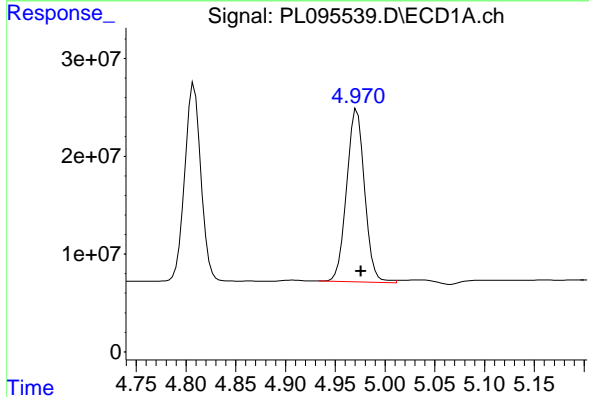
R.T.: 4.373 min  
 Delta R.T.: -0.005 min  
 Response: 233350542  
 Conc: 49.29 ng/ml

Instrument :  
 ECD\_L  
 ClientSampleId :  
 SMALL-PILE-AMS



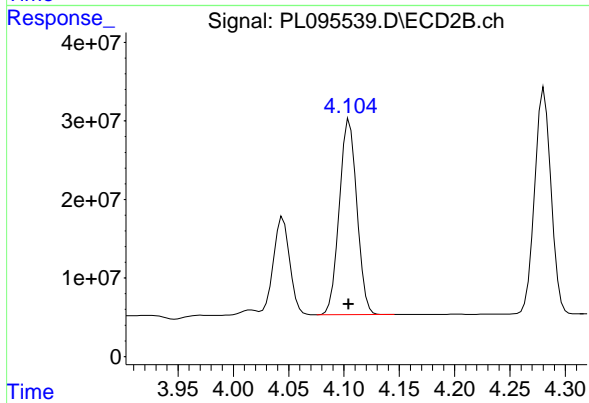
#3 gamma-BHC (Lindane)

R.T.: 3.752 min  
 Delta R.T.: 0.002 min  
 Response: 293122336  
 Conc: 66.65 ng/ml



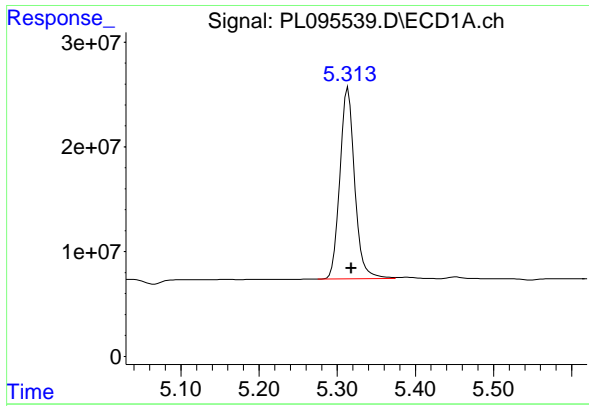
#4 Heptachlor

R.T.: 4.972 min  
 Delta R.T.: -0.004 min  
 Response: 222779807  
 Conc: 48.70 ng/ml



#4 Heptachlor

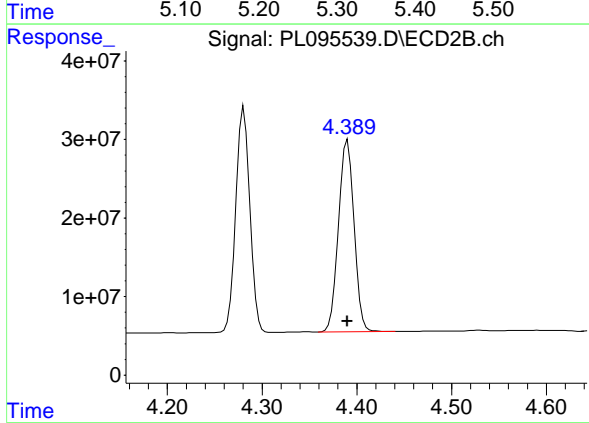
R.T.: 4.105 min  
 Delta R.T.: 0.000 min  
 Response: 276216852  
 Conc: 63.40 ng/ml



#5 Aldrin

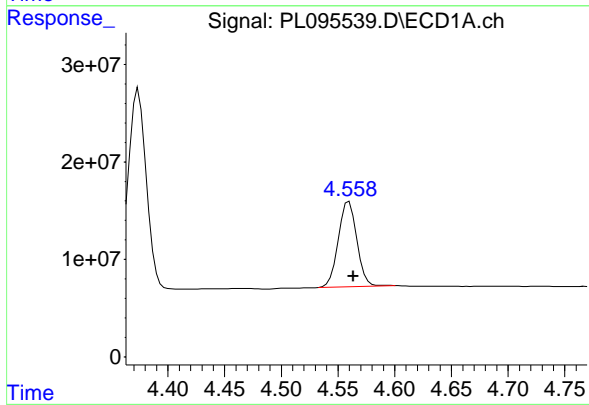
R.T.: 5.313 min  
 Delta R.T.: -0.006 min  
 Response: 240761994  
 Conc: 52.42 ng/ml

Instrument :  
 ECD\_L  
 ClientSampleId :  
 SMALL-PILE-AMS



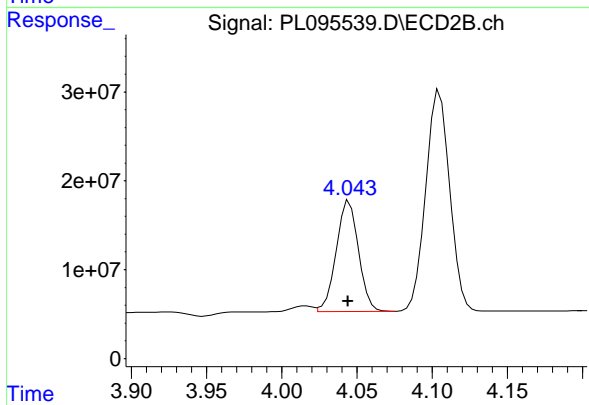
#5 Aldrin

R.T.: 4.390 min  
 Delta R.T.: 0.000 min  
 Response: 278918280  
 Conc: 67.77 ng/ml



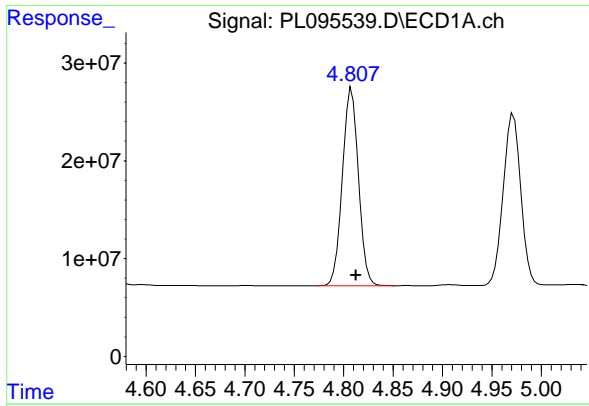
#6 beta-BHC

R.T.: 4.560 min  
 Delta R.T.: -0.004 min  
 Response: 99701701  
 Conc: 48.22 ng/ml



#6 beta-BHC

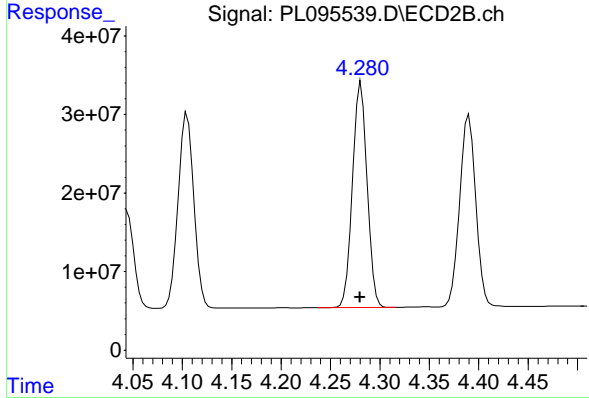
R.T.: 4.045 min  
 Delta R.T.: 0.001 min  
 Response: 128669094  
 Conc: 61.98 ng/ml



#7 delta-BHC

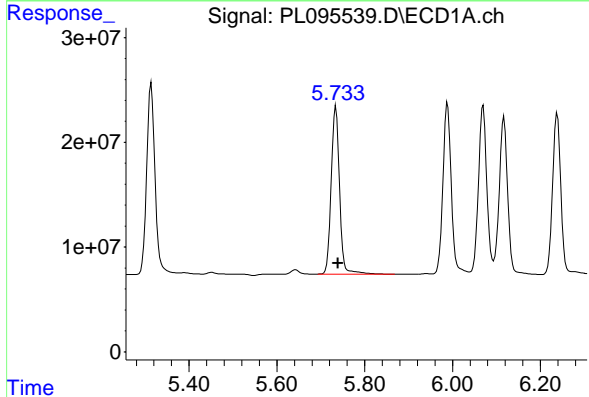
R.T.: 4.807 min  
 Delta R.T.: -0.006 min  
 Response: 228345594  
 Conc: 49.10 ng/ml

Instrument :  
 ECD\_L  
 ClientSampleId :  
 SMALL-PILE-AMS



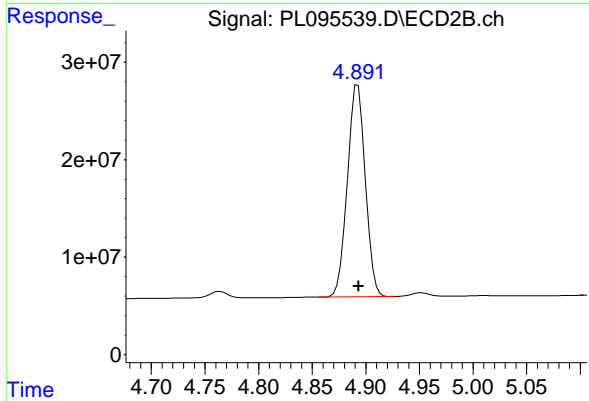
#7 delta-BHC

R.T.: 4.281 min  
 Delta R.T.: 0.001 min  
 Response: 296291247  
 Conc: 67.62 ng/ml



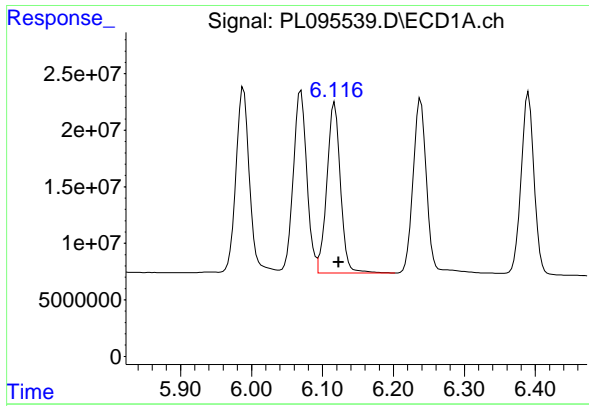
#8 Heptachlor epoxide

R.T.: 5.734 min  
 Delta R.T.: -0.005 min  
 Response: 211992150  
 Conc: 52.93 ng/ml



#8 Heptachlor epoxide

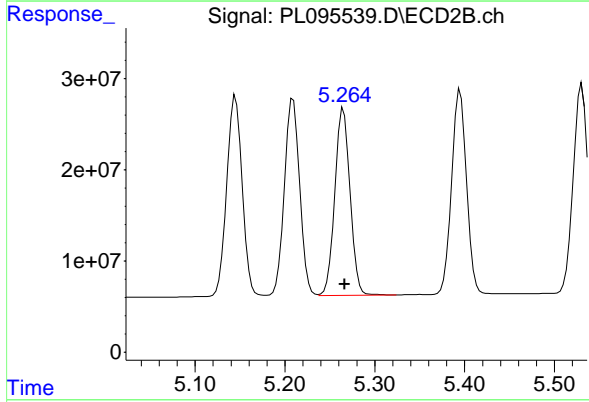
R.T.: 4.893 min  
 Delta R.T.: 0.000 min  
 Response: 253663334  
 Conc: 65.67 ng/ml



#9 Endosulfan I

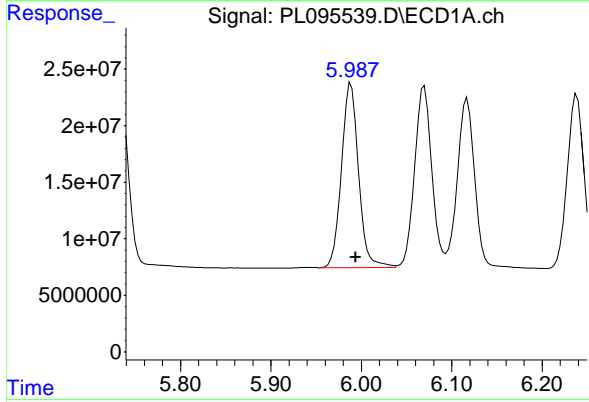
R.T.: 6.117 min  
 Delta R.T.: -0.005 min  
 Response: 201671257  
 Conc: 53.11 ng/ml

Instrument :  
 ECD\_L  
 ClientSampleId :  
 SMALL-PILE-AMS



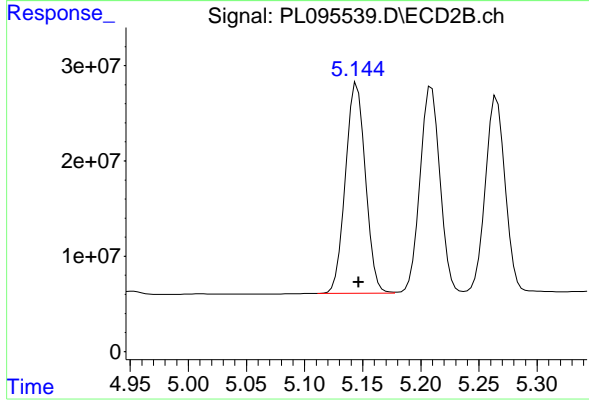
#9 Endosulfan I

R.T.: 5.265 min  
 Delta R.T.: -0.001 min  
 Response: 242434560  
 Conc: 66.23 ng/ml



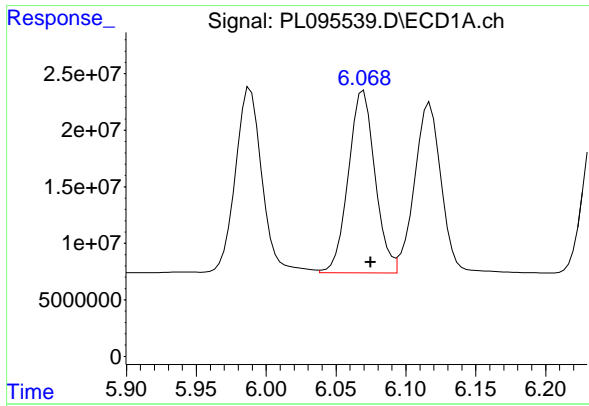
#10 gamma-Chlordane

R.T.: 5.987 min  
 Delta R.T.: -0.006 min  
 Response: 214852399  
 Conc: 52.67 ng/ml m



#10 gamma-Chlordane

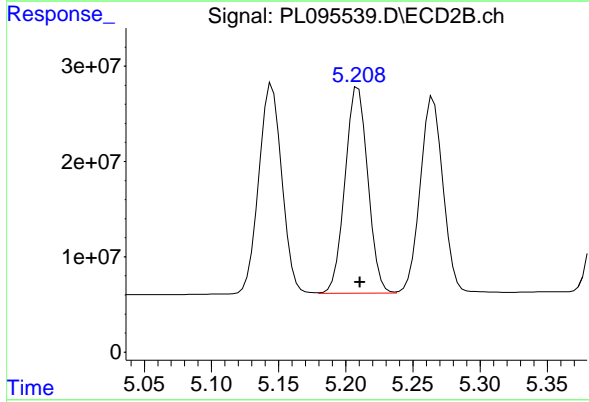
R.T.: 5.144 min  
 Delta R.T.: -0.003 min  
 Response: 263682901  
 Conc: 65.06 ng/ml m



#11 alpha-Chlordane

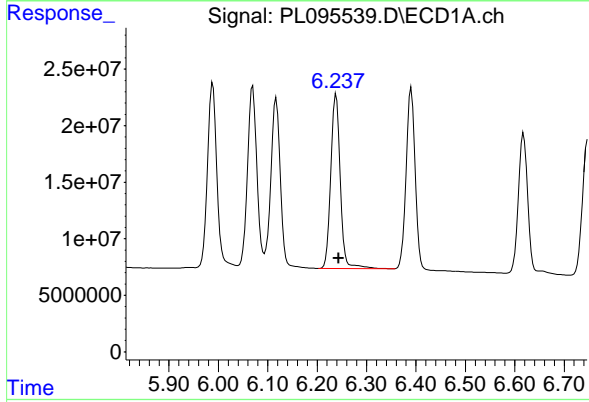
R.T.: 6.070 min  
 Delta R.T.: -0.005 min  
 Response: 214032875  
 Conc: 52.64 ng/ml

Instrument :  
 ECD\_L  
 ClientSampleId :  
 SMALL-PILE-AMS



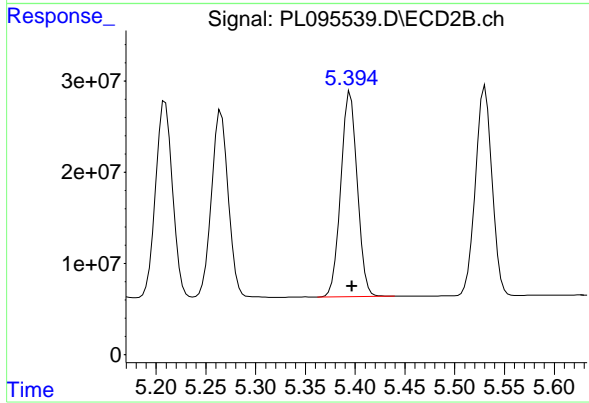
#11 alpha-Chlordane

R.T.: 5.209 min  
 Delta R.T.: -0.001 min  
 Response: 257043205  
 Conc: 64.57 ng/ml



#12 4,4'-DDE

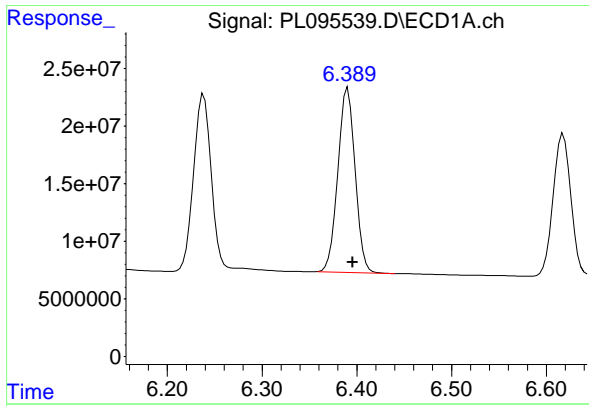
R.T.: 6.238 min  
 Delta R.T.: -0.005 min  
 Response: 205818975  
 Conc: 52.50 ng/ml



#12 4,4'-DDE

R.T.: 5.395 min  
 Delta R.T.: -0.002 min  
 Response: 259324346  
 Conc: 63.76 ng/ml

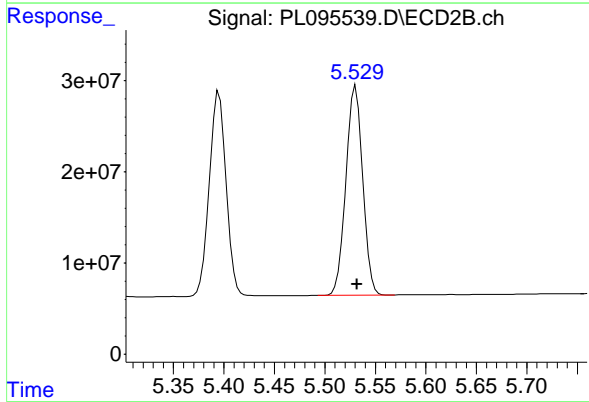




#13 Dieldrin

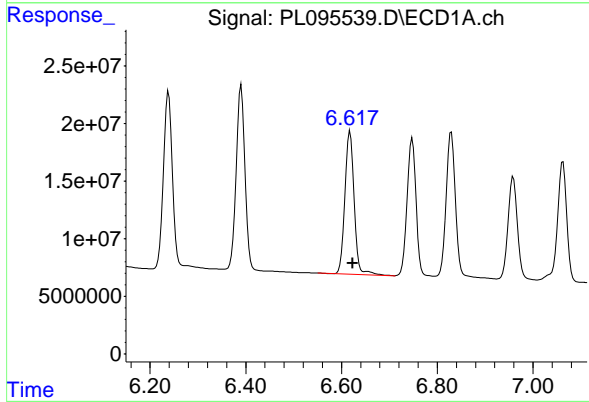
R.T.: 6.390 min  
 Delta R.T.: -0.005 min  
 Response: 201904862  
 Conc: 52.38 ng/ml

Instrument :  
 ECD\_L  
 ClientSampleId :  
 SMALL-PILE-AMS



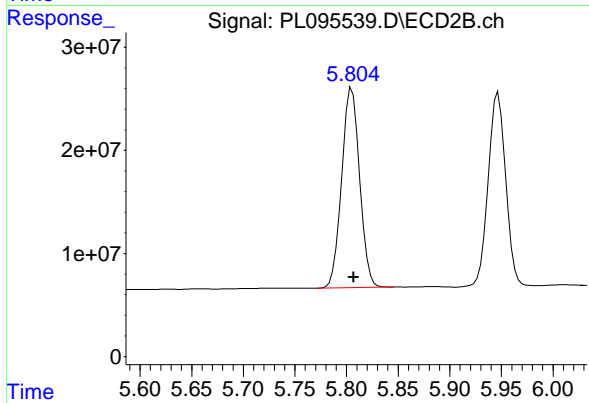
#13 Dieldrin

R.T.: 5.531 min  
 Delta R.T.: -0.001 min  
 Response: 266932621  
 Conc: 65.63 ng/ml



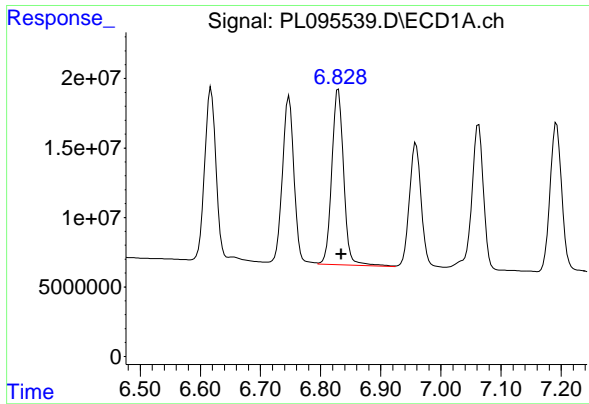
#14 Endrin

R.T.: 6.618 min  
 Delta R.T.: -0.005 min  
 Response: 166978686  
 Conc: 52.43 ng/ml



#14 Endrin

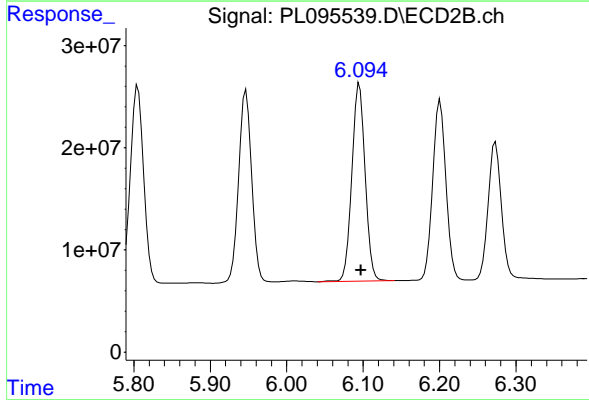
R.T.: 5.805 min  
 Delta R.T.: -0.002 min  
 Response: 234305468  
 Conc: 64.36 ng/ml



#15 Endosulfan II

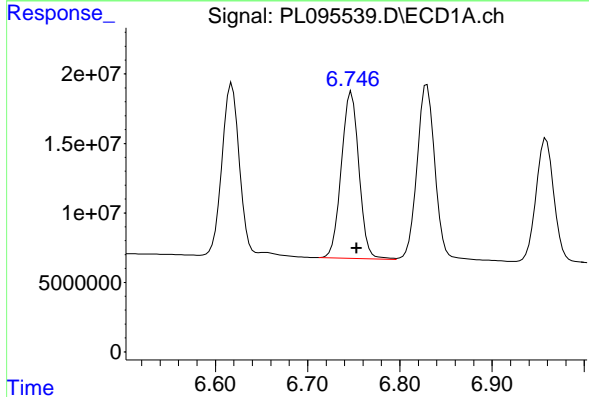
R.T.: 6.830 min  
 Delta R.T.: -0.005 min  
 Response: 173514028  
 Conc: 54.36 ng/ml

Instrument :  
 ECD\_L  
 ClientSampleId :  
 SMALL-PILE-AMS



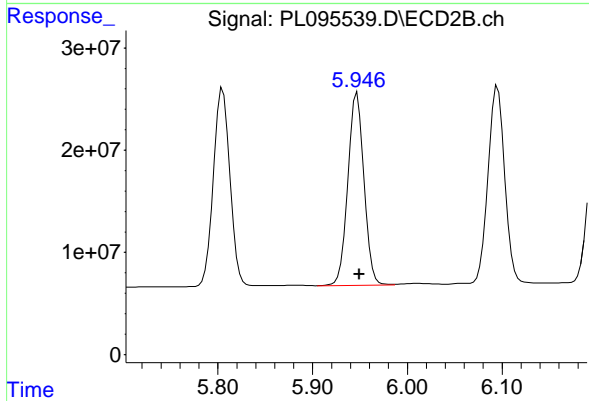
#15 Endosulfan II

R.T.: 6.095 min  
 Delta R.T.: -0.002 min  
 Response: 236578615  
 Conc: 65.88 ng/ml



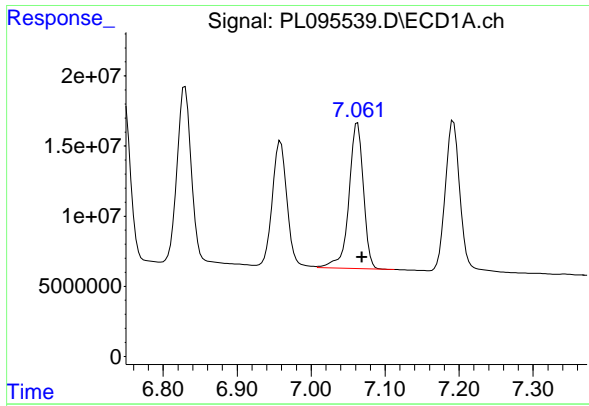
#16 4,4'-DDD

R.T.: 6.748 min  
 Delta R.T.: -0.005 min  
 Response: 158716064  
 Conc: 56.06 ng/ml



#16 4,4'-DDD

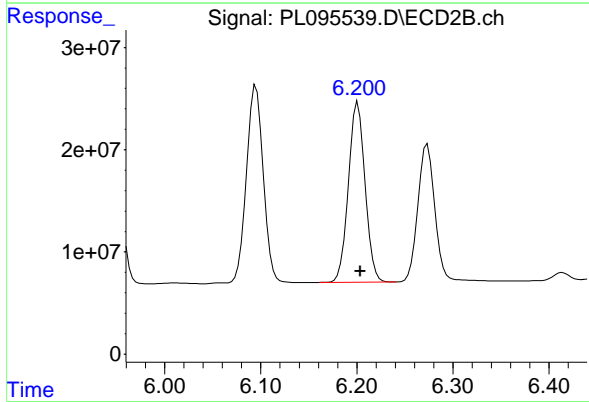
R.T.: 5.947 min  
 Delta R.T.: -0.002 min  
 Response: 222833456  
 Conc: 68.21 ng/ml



#17 4,4'-DDT

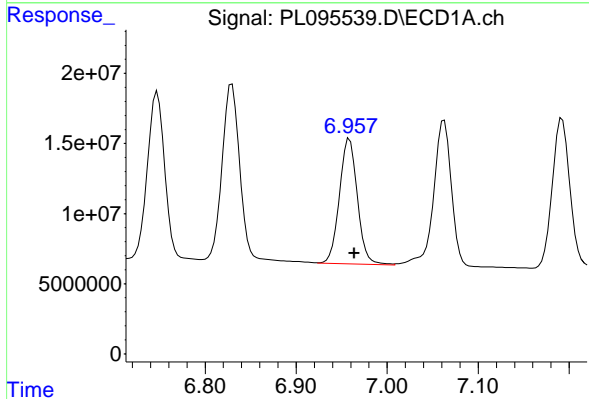
R.T.: 7.063 min  
 Delta R.T.: -0.006 min  
 Response: 140415990  
 Conc: 49.29 ng/ml

Instrument :  
 ECD\_L  
 ClientSampleId :  
 SMALL-PILE-AMS



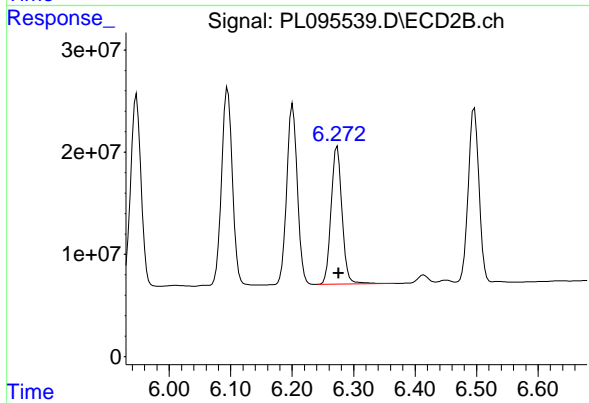
#17 4,4'-DDT

R.T.: 6.201 min  
 Delta R.T.: -0.003 min  
 Response: 211754017  
 Conc: 61.62 ng/ml



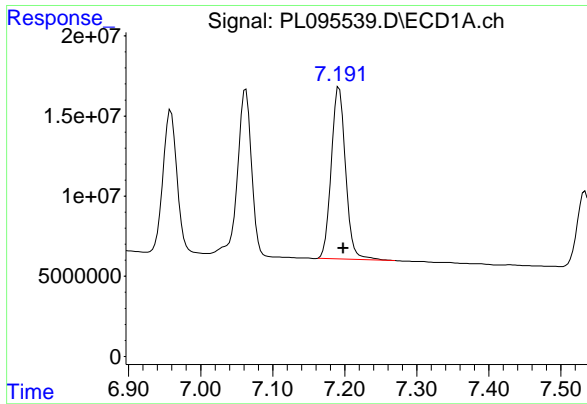
#18 Endrin aldehyde

R.T.: 6.959 min  
 Delta R.T.: -0.005 min  
 Response: 122535960  
 Conc: 52.80 ng/ml



#18 Endrin aldehyde

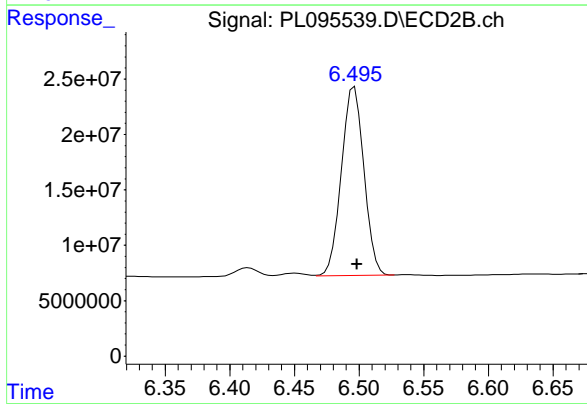
R.T.: 6.273 min  
 Delta R.T.: -0.002 min  
 Response: 166913384  
 Conc: 63.87 ng/ml



#19 Endosulfan Sulfate

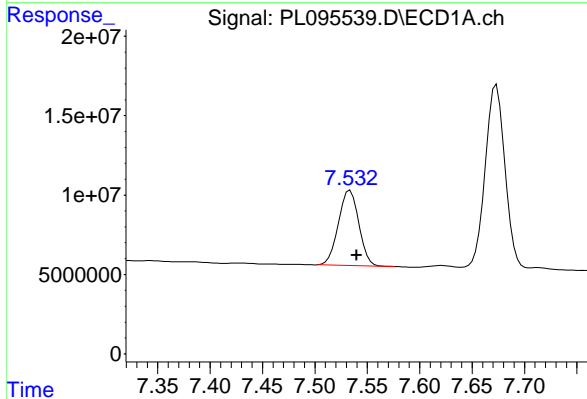
R.T.: 7.192 min  
 Delta R.T.: -0.006 min  
 Response: 147067558  
 Conc: 52.49 ng/ml

Instrument :  
 ECD\_L  
 ClientSampleId :  
 SMALL-PILE-AMS



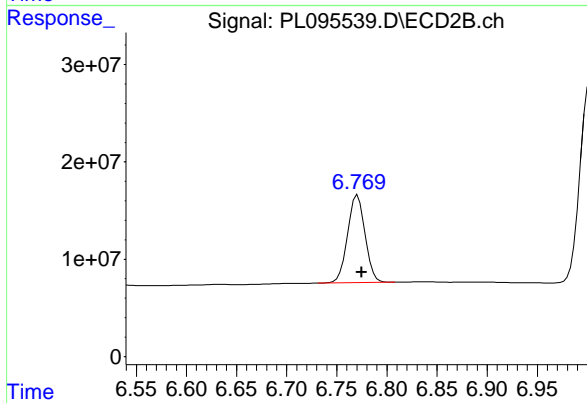
#19 Endosulfan Sulfate

R.T.: 6.495 min  
 Delta R.T.: -0.003 min  
 Response: 205854539  
 Conc: 62.04 ng/ml m



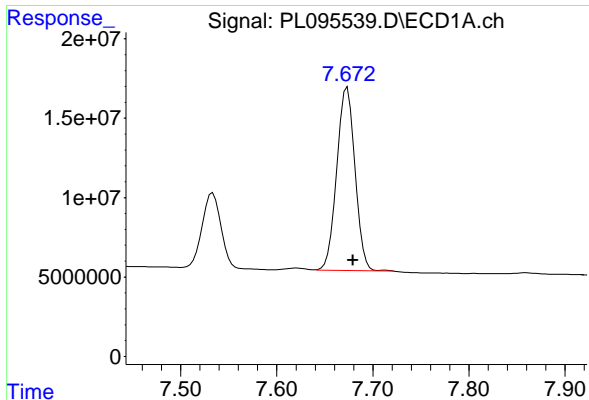
#20 Methoxychlor

R.T.: 7.533 min  
 Delta R.T.: -0.006 min  
 Response: 64119642  
 Conc: 45.96 ng/ml



#20 Methoxychlor

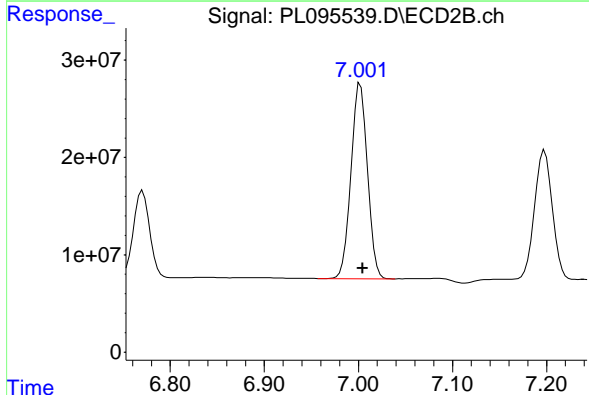
R.T.: 6.769 min  
 Delta R.T.: -0.005 min  
 Response: 109435333  
 Conc: 57.37 ng/ml m



#21 Endrin ketone

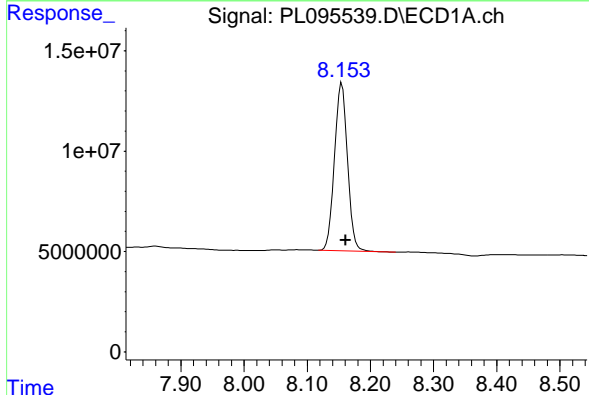
R.T.: 7.673 min  
 Delta R.T.: -0.006 min  
 Response: 150113873  
 Conc: 52.66 ng/ml

Instrument :  
 ECD\_L  
 ClientSampleId :  
 SMALL-PILE-AMS



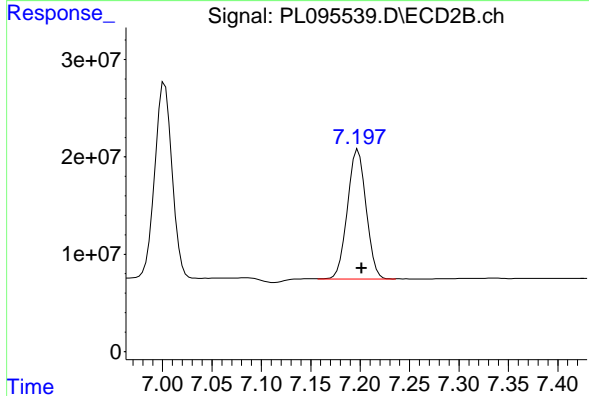
#21 Endrin ketone

R.T.: 7.002 min  
 Delta R.T.: -0.002 min  
 Response: 243699045  
 Conc: 69.21 ng/ml



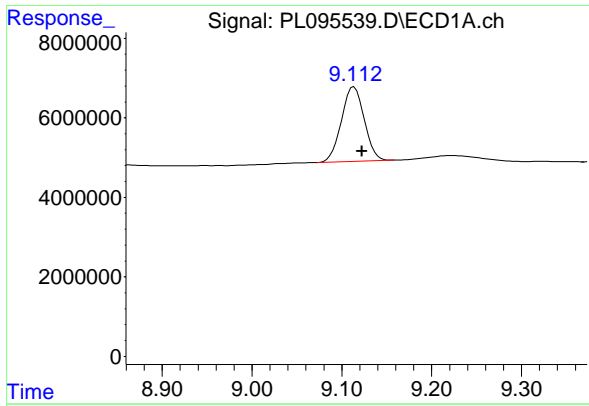
#22 Mirex

R.T.: 8.155 min  
 Delta R.T.: -0.006 min  
 Response: 119503663  
 Conc: 50.30 ng/ml



#22 Mirex

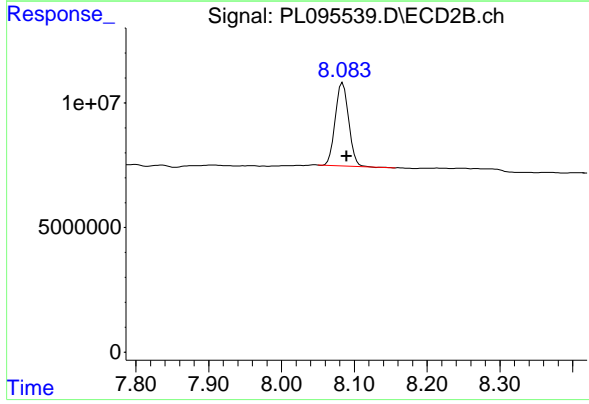
R.T.: 7.197 min  
 Delta R.T.: -0.005 min  
 Response: 175294797  
 Conc: 60.82 ng/ml m



#28 Decachlorobiphenyl

R.T.: 9.114 min  
Delta R.T.: -0.009 min  
Response: 33057669  
Conc: 11.93 ng/ml

Instrument :  
ECD\_L  
ClientSampleId :  
SMALL-PILE-AMS



#28 Decachlorobiphenyl

R.T.: 8.084 min  
Delta R.T.: -0.005 min  
Response: 42851827  
Conc: 14.48 ng/ml