

Data Path : Z:\pestpcbsrv\HPCHEM1\ECD_L\Data\PL050625\
 Data File : PL095540.D
 Signal(s) : Signal #1: ECD1A.ch Signal #2: ECD2B.ch
 Acq On : 05 May 2025 15:19
 Operator : AR\AJ
 Sample : Q1936-01MSD
 Misc :
 ALS Vial : 14 Sample Multiplier: 1

Instrument :
 ECD_L
 ClientSampleId :
 SMALL-PILE-AMSD

Integration File signal 1: autoint1.e
 Integration File signal 2: autoint2.e
 Quant Time: May 06 01:40:59 2025
 Quant Method : Z:\pestpcbsrv\HPCHEM1\ECD_L\methods\PL042325.M
 Quant Title : GC Extractables
 QLast Update : Wed Apr 23 16:23:18 2025
 Response via : Initial Calibration
 Integrator: ChemStation

Volume Inj. : 1 µl
 Signal #1 Phase : ZB-MR1 Signal #2 Phase: ZB-MR2
 Signal #1 Info : 30M x 0.32mm x0.5 Signal #2 Info : 30M x 0.32mm x0.25µm

Compound	RT#1	RT#2	Resp#1	Resp#2	ng/ml	ng/ml

System Monitoring Compounds						
1) SA Tetrachlo...	3.592	2.909	38695605	48750681	11.853	15.332 #
28) SA Decachlor...	9.113	8.084	34079997	40290352	12.300	13.615
Target Compounds						
2) A alpha-BHC	4.043	3.418	235.3E6	293.7E6	47.500	66.011 #
3) MA gamma-BHC...	4.374	3.751	225.8E6	275.2E6	47.698	62.570 #
4) MA Heptachlor	4.970	4.105	211.4E6	260.1E6	46.205m	59.695 #
5) MB Aldrin	5.312	4.390	232.6E6	262.0E6	50.631m	63.657 #
6) B beta-BHC	4.560	4.045	95126498	119.5E6	46.010	57.587 #
7) B delta-BHC	4.807	4.281	222.2E6	278.0E6	47.785m	63.441 #
8) B Heptachlo...	5.734	4.892	204.1E6	235.6E6	50.956	60.998
9) A Endosulfan I	6.117	5.266	197.8E6	225.6E6	52.078	61.640
10) B gamma-Chl...	5.988	5.145	210.2E6	249.4E6	51.533	61.527
11) B alpha-Chl...	6.069	5.210	207.0E6	241.1E6	50.897	60.560
12) B 4,4'-DDE	6.236	5.396	194.1E6	224.6E6	49.520m	55.236
13) MA Dieldrin	6.390	5.531	194.6E6	246.6E6	50.485	60.643
14) MA Endrin	6.616	5.806	157.5E6	195.3E6	49.442m	53.642
15) B Endosulfa...	6.828	6.095	164.8E6	217.7E6	51.615m	60.631
16) A 4,4'-DDD	6.747	5.947	157.6E6	205.6E6	55.675	62.933
17) MA 4,4'-DDT	7.062	6.200	136.9E6	182.4E6	48.055	53.070m
18) B Endrin al...	6.958	6.273	121.8E6	156.7E6	52.499	59.962
19) B Endosulfa...	7.192	6.495	145.8E6	197.7E6	52.022	59.595m
20) A Methoxychlor	7.533	6.770	64857304	103.4E6	46.488	54.213m
21) B Endrin ke...	7.673	7.002	148.3E6	231.3E6	52.007	65.686 #
22) Mirex	8.155	7.196	118.7E6	164.6E6	49.946	57.098m

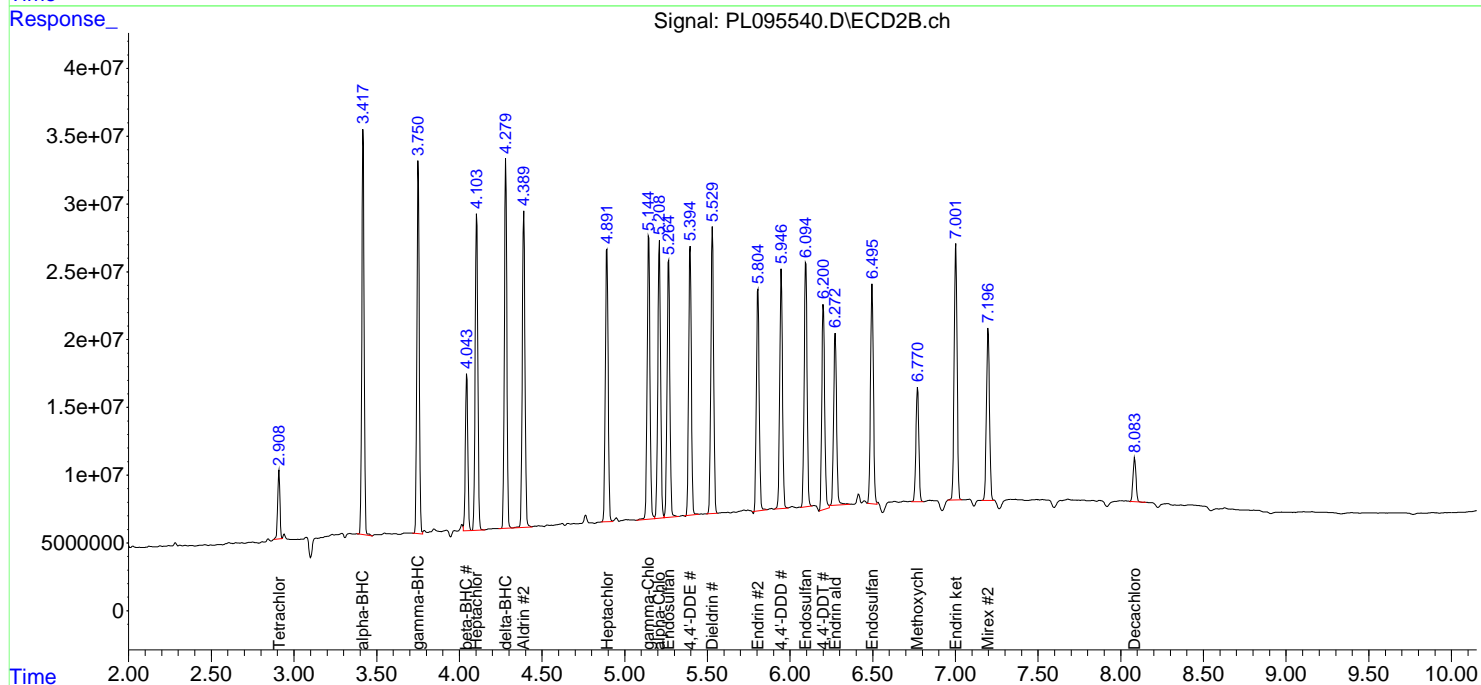
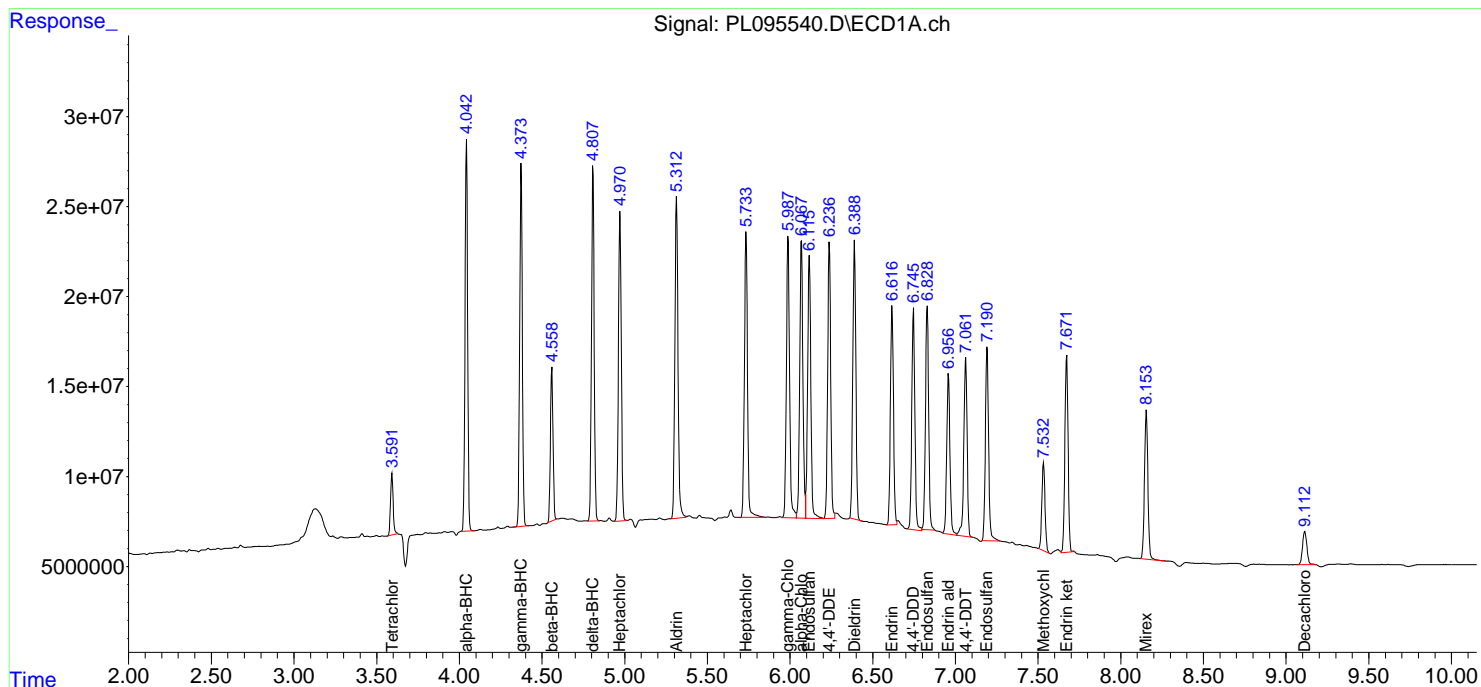
(f)=RT Delta > 1/2 Window (#)=Amounts differ by > 25% (m)=manual int.

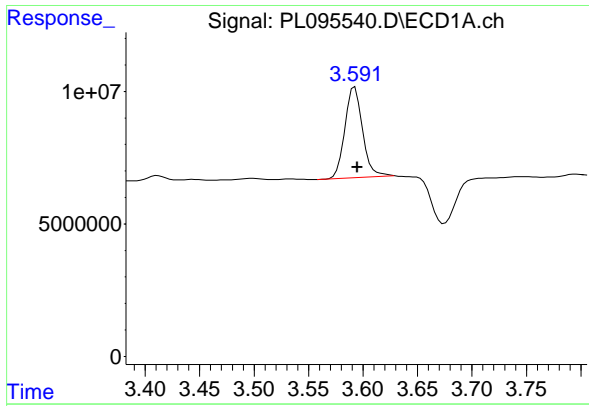
Data Path : Z:\pestpcbsrv\HPCHEM1\ECD_L\Data\PL050625\
 Data File : PL095540.D
 Signal(s) : Signal #1: ECD1A.ch Signal #2: ECD2B.ch
 Acq On : 05 May 2025 15:19
 Operator : AR\AJ
 Sample : Q1936-01MSD
 Misc :
 ALS Vial : 14 Sample Multiplier: 1

Instrument :
 ECD_L
 ClientSampleId :
 SMALL-PILE-AMSD

Integration File signal 1: autoint1.e
 Integration File signal 2: autoint2.e
 Quant Time: May 06 01:40:59 2025
 Quant Method : Z:\pestpcbsrv\HPCHEM1\ECD_L\methods\PL042325.M
 Quant Title : GC Extractables
 QLast Update : Wed Apr 23 16:23:18 2025
 Response via : Initial Calibration
 Integrator: ChemStation

Volume Inj. : 1 µl
 Signal #1 Phase : ZB-MR1 Signal #2 Phase: ZB-MR2
 Signal #1 Info : 30M x 0.32mm x0.5 Signal #2 Info : 30M x 0.32mm x0.25µm

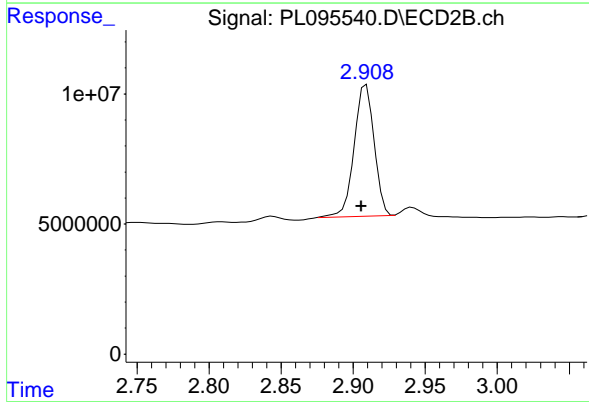




#1 Tetrachloro-m-xylene

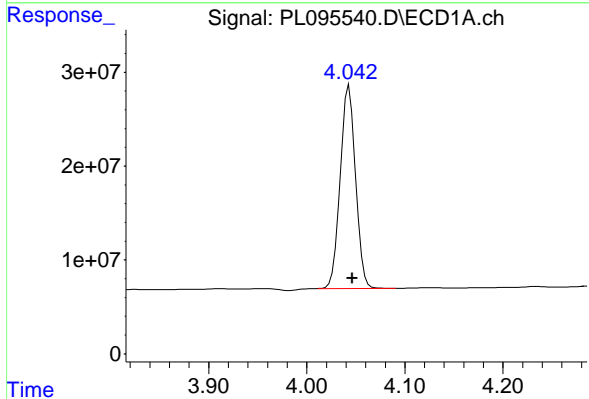
R.T.: 3.592 min
 Delta R.T.: -0.003 min
 Response: 38695605
 Conc: 11.85 ng/ml

Instrument :
 ECD_L
 ClientSampleId :
 SMALL-PILE-AMSD



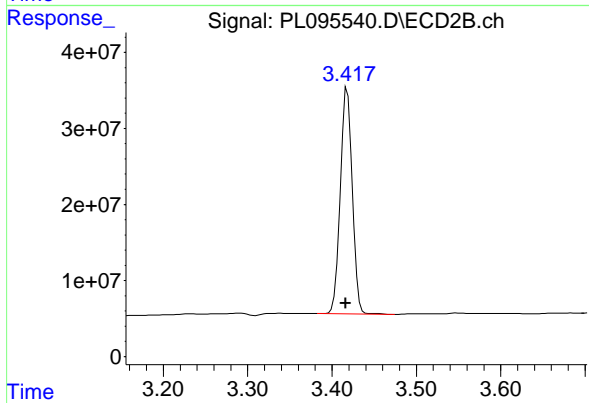
#1 Tetrachloro-m-xylene

R.T.: 2.909 min
 Delta R.T.: 0.003 min
 Response: 48750681
 Conc: 15.33 ng/ml



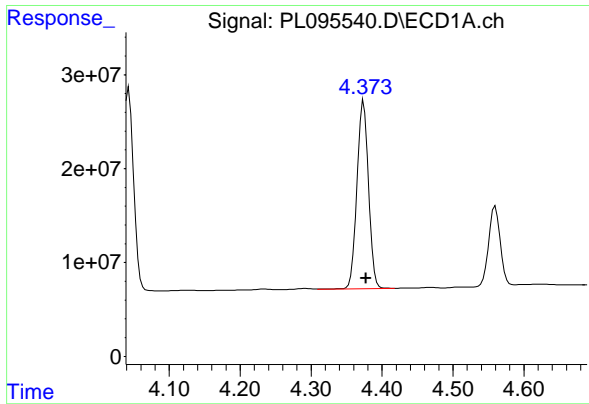
#2 alpha-BHC

R.T.: 4.043 min
 Delta R.T.: -0.003 min
 Response: 235304579
 Conc: 47.50 ng/ml



#2 alpha-BHC

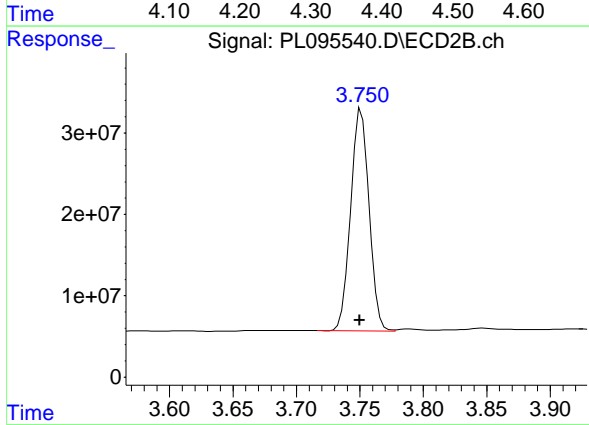
R.T.: 3.418 min
 Delta R.T.: 0.002 min
 Response: 293665685
 Conc: 66.01 ng/ml



#3 gamma-BHC (Lindane)

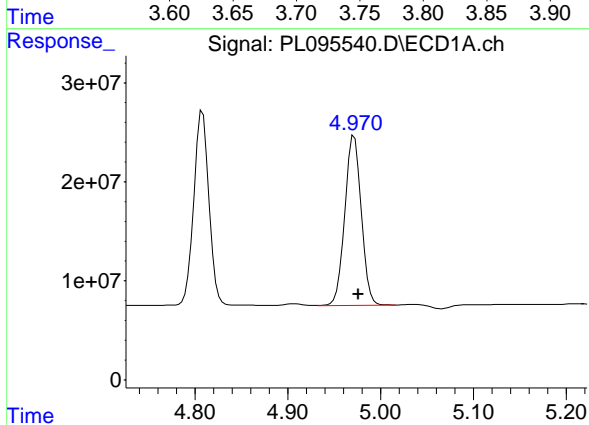
R.T.: 4.374 min
Delta R.T.: -0.003 min
Response: 225799413
Conc: 47.70 ng/ml

Instrument :
ECD_L
ClientSampleId :
SMALL-PILE-AMSD



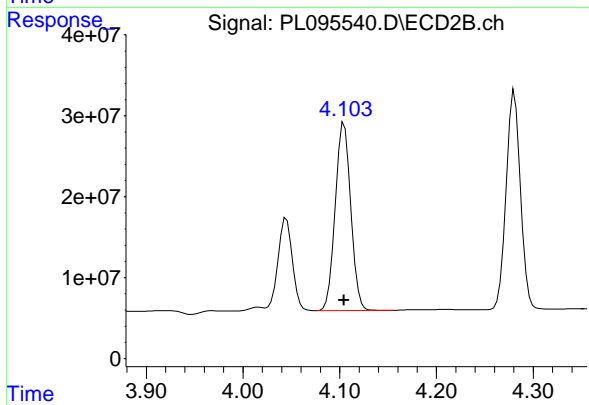
#3 gamma-BHC (Lindane)

R.T.: 3.751 min
Delta R.T.: 0.001 min
Response: 275195636
Conc: 62.57 ng/ml



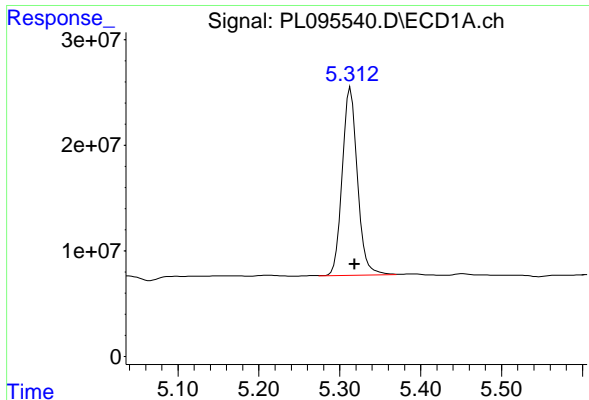
#4 Heptachlor

R.T.: 4.970 min
Delta R.T.: -0.006 min
Response: 211362681
Conc: 46.20 ng/ml m



#4 Heptachlor

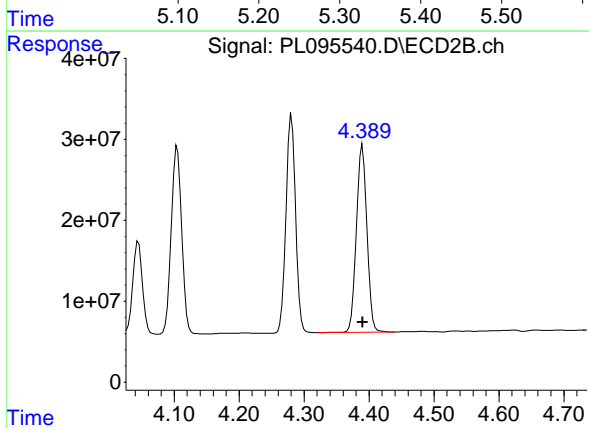
R.T.: 4.105 min
Delta R.T.: 0.000 min
Response: 260074107
Conc: 59.70 ng/ml



#5 Aldrin

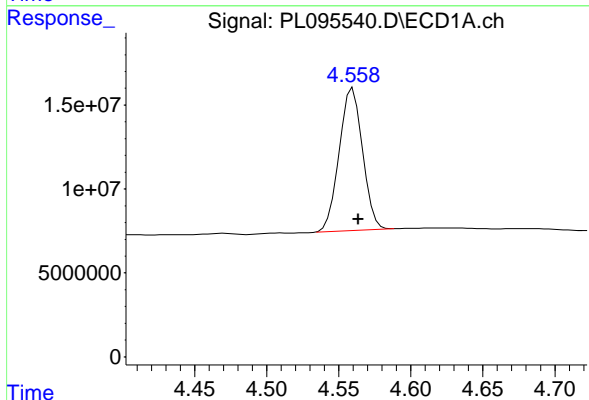
R.T.: 5.312 min
 Delta R.T.: -0.006 min
 Response: 232551511
 Conc: 50.63 ng/ml

Instrument :
 ECD_L
 ClientSampleId :
 SMALL-PILE-AMSD



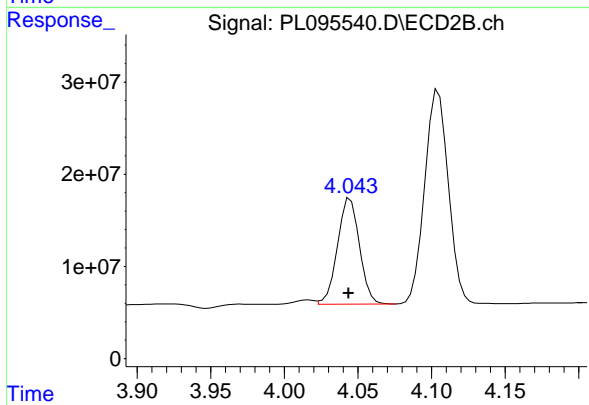
#5 Aldrin

R.T.: 4.390 min
 Delta R.T.: 0.000 min
 Response: 261992032
 Conc: 63.66 ng/ml



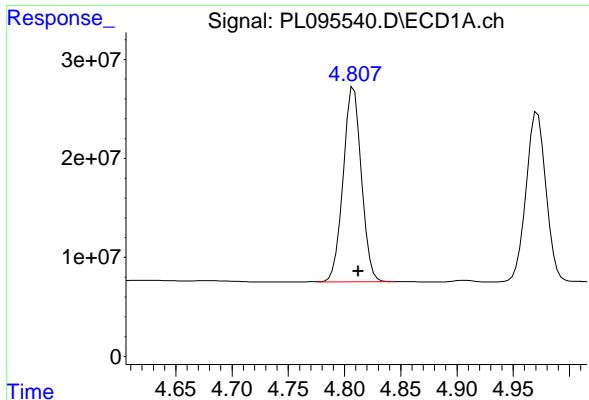
#6 beta-BHC

R.T.: 4.560 min
 Delta R.T.: -0.004 min
 Response: 95126498
 Conc: 46.01 ng/ml



#6 beta-BHC

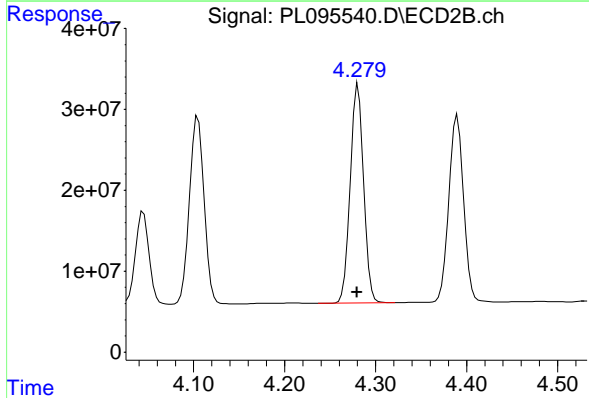
R.T.: 4.045 min
 Delta R.T.: 0.001 min
 Response: 119543729
 Conc: 57.59 ng/ml



#7 delta-BHC

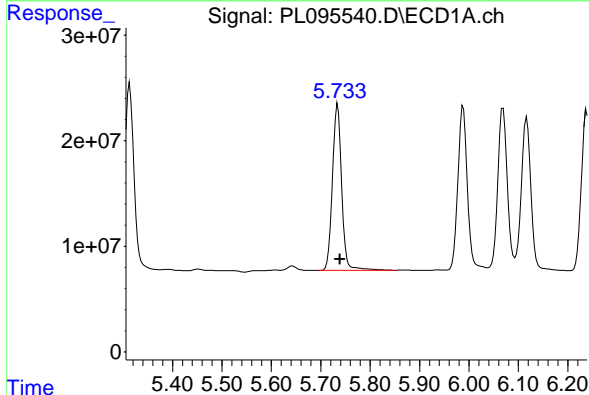
R.T.: 4.807 min
 Delta R.T.: -0.006 min
 Response: 222233115
 Conc: 47.79 ng/ml

Instrument :
 ECD_L
 ClientSampleId :
 SMALL-PILE-AMSD



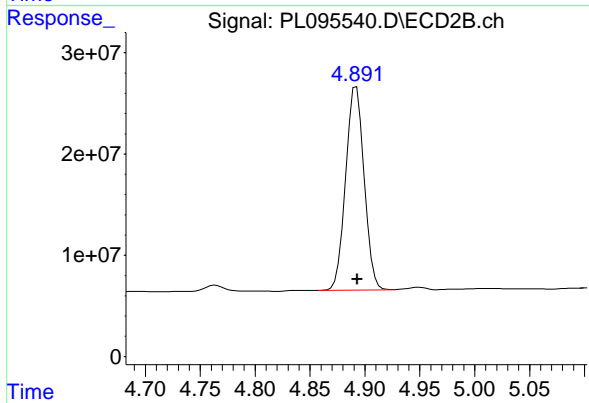
#7 delta-BHC

R.T.: 4.281 min
 Delta R.T.: 0.001 min
 Response: 277994896
 Conc: 63.44 ng/ml



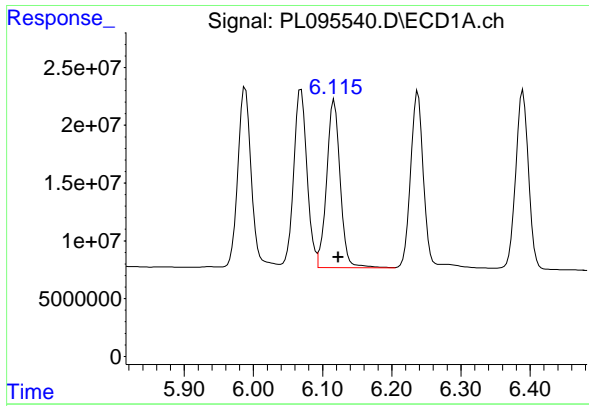
#8 Heptachlor epoxide

R.T.: 5.734 min
 Delta R.T.: -0.005 min
 Response: 204087744
 Conc: 50.96 ng/ml



#8 Heptachlor epoxide

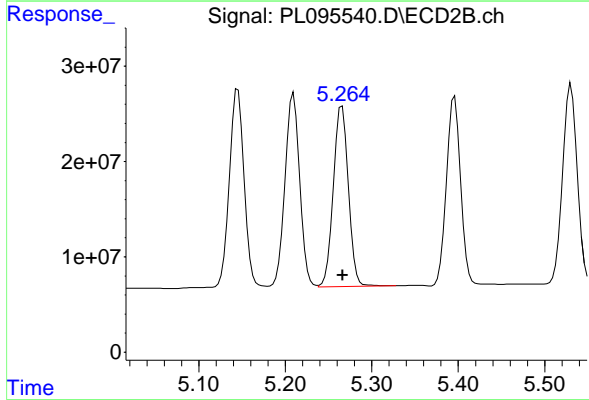
R.T.: 4.892 min
 Delta R.T.: -0.001 min
 Response: 235613138
 Conc: 61.00 ng/ml



#9 Endosulfan I

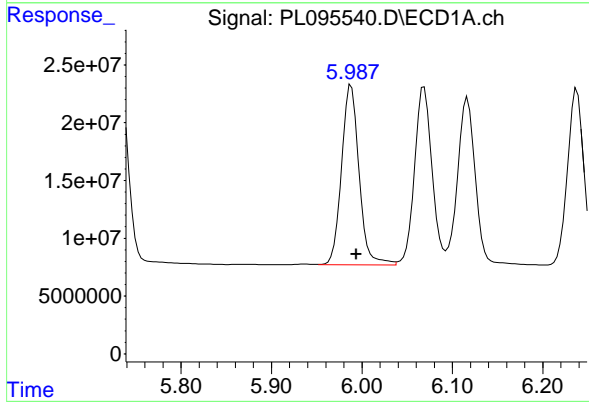
R.T.: 6.117 min
Delta R.T.: -0.006 min
Response: 197765979
Conc: 52.08 ng/ml

Instrument :
ECD_L
ClientSampleId :
SMALL-PILE-AMSD



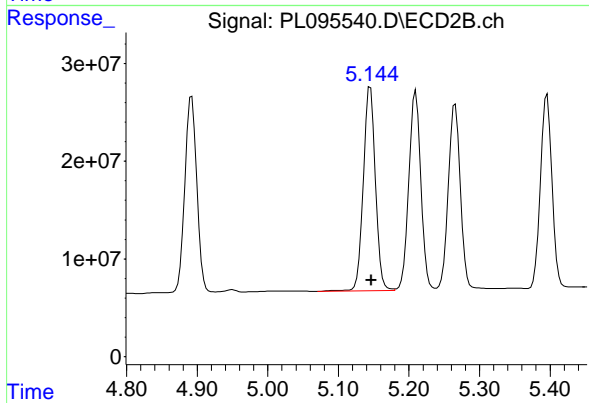
#9 Endosulfan I

R.T.: 5.266 min
Delta R.T.: -0.001 min
Response: 225627579
Conc: 61.64 ng/ml



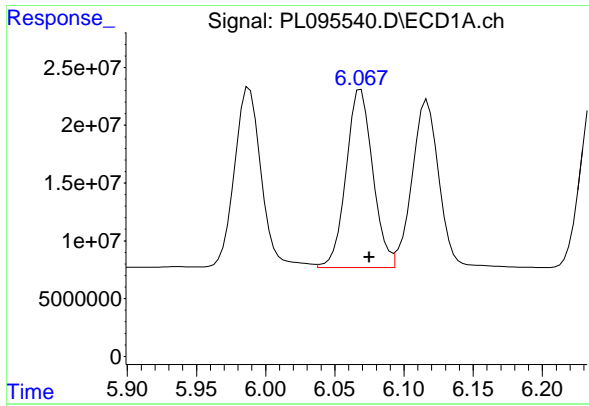
#10 gamma-Chlordane

R.T.: 5.988 min
Delta R.T.: -0.005 min
Response: 210219705
Conc: 51.53 ng/ml



#10 gamma-Chlordane

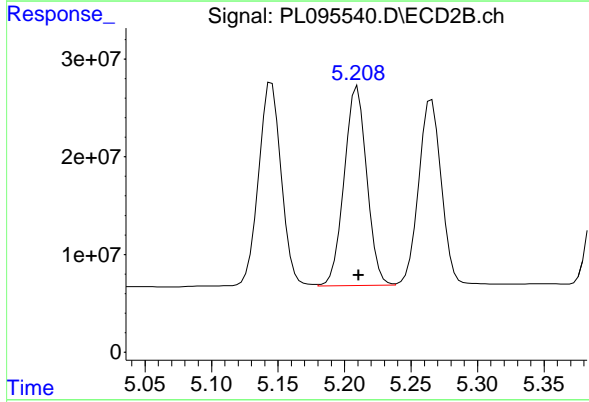
R.T.: 5.145 min
Delta R.T.: -0.001 min
Response: 249350274
Conc: 61.53 ng/ml



#11 alpha-Chlordane

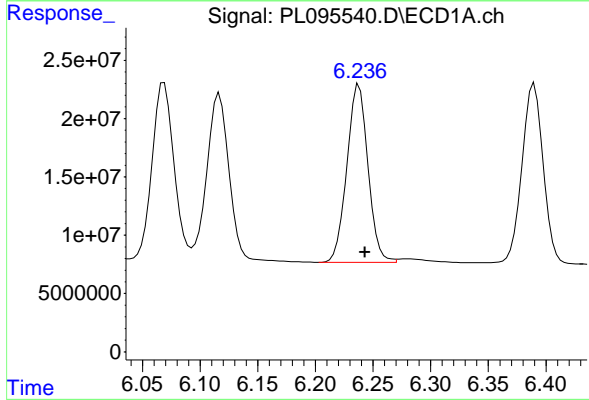
R.T.: 6.069 min
 Delta R.T.: -0.006 min
 Response: 206952580
 Conc: 50.90 ng/ml

Instrument :
 ECD_L
 ClientSampleId :
 SMALL-PILE-AMSD



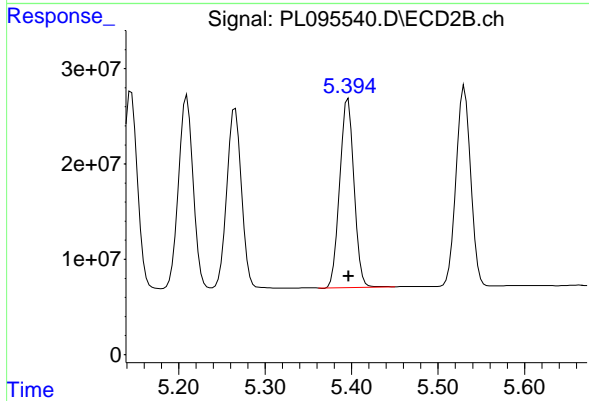
#11 alpha-Chlordane

R.T.: 5.210 min
 Delta R.T.: 0.000 min
 Response: 241094702
 Conc: 60.56 ng/ml



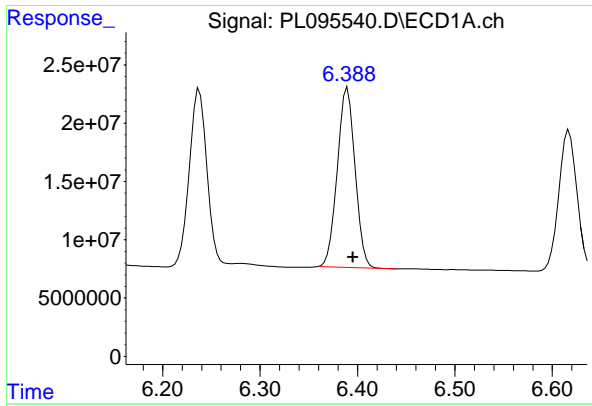
#12 4,4'-DDE

R.T.: 6.236 min
 Delta R.T.: -0.007 min
 Response: 194144536
 Conc: 49.52 ng/ml m



#12 4,4'-DDE

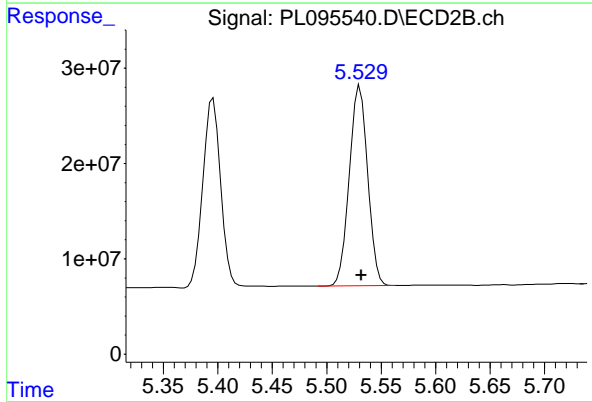
R.T.: 5.396 min
 Delta R.T.: -0.001 min
 Response: 224644959
 Conc: 55.24 ng/ml



#13 Dieldrin

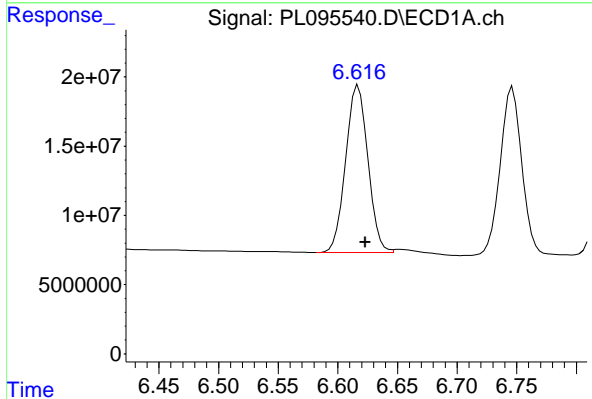
R.T.: 6.390 min
 Delta R.T.: -0.006 min
 Response: 194610744
 Conc: 50.49 ng/ml

Instrument :
 ECD_L
 ClientSampleId :
 SMALL-PILE-AMSD



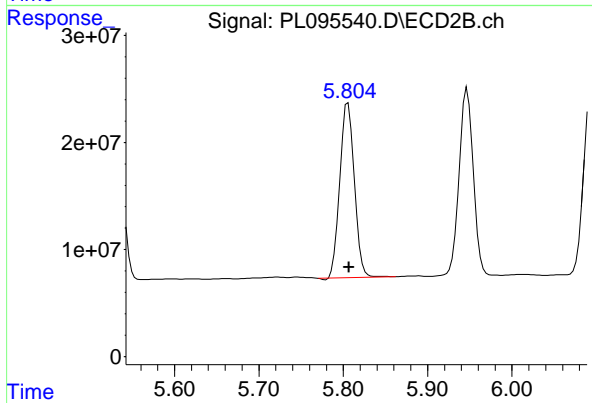
#13 Dieldrin

R.T.: 5.531 min
 Delta R.T.: -0.001 min
 Response: 246638416
 Conc: 60.64 ng/ml



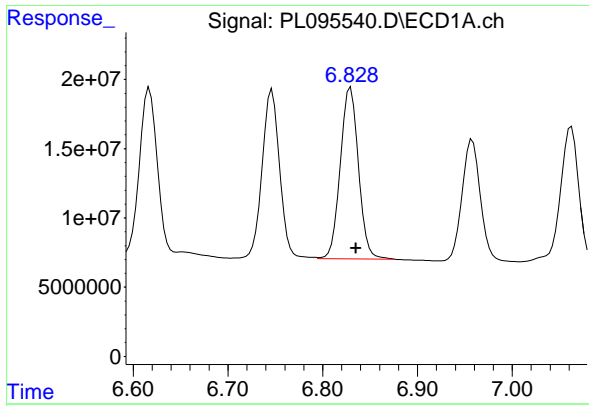
#14 Endrin

R.T.: 6.616 min
 Delta R.T.: -0.007 min
 Response: 157459585
 Conc: 49.44 ng/ml m



#14 Endrin

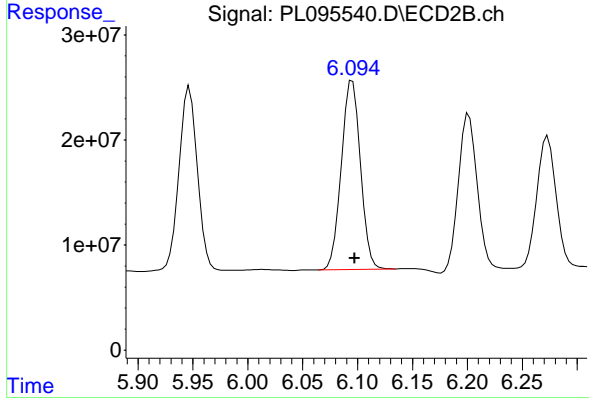
R.T.: 5.806 min
 Delta R.T.: -0.001 min
 Response: 195294103
 Conc: 53.64 ng/ml



#15 Endosulfan II

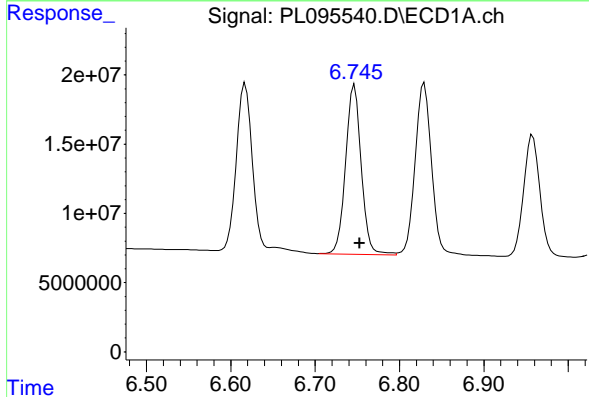
R.T.: 6.828 min
 Delta R.T.: -0.007 min
 Response: 164763326
 Conc: 51.62 ng/ml

Instrument :
 ECD_L
 ClientSampleId :
 SMALL-PILE-AMSD



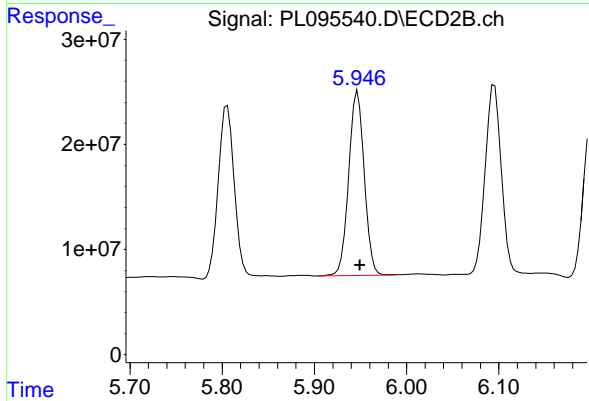
#15 Endosulfan II

R.T.: 6.095 min
 Delta R.T.: -0.002 min
 Response: 217732993
 Conc: 60.63 ng/ml



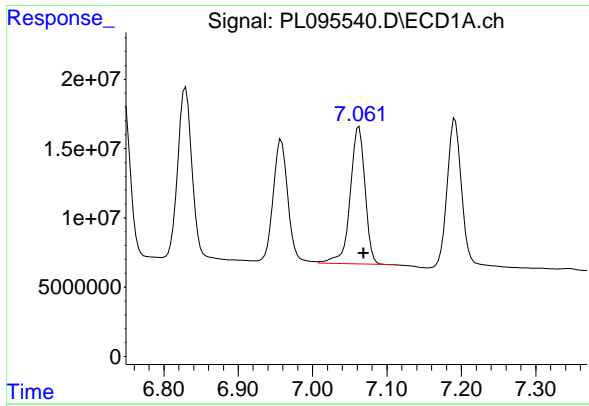
#16 4,4'-DDD

R.T.: 6.747 min
 Delta R.T.: -0.006 min
 Response: 157612784
 Conc: 55.67 ng/ml



#16 4,4'-DDD

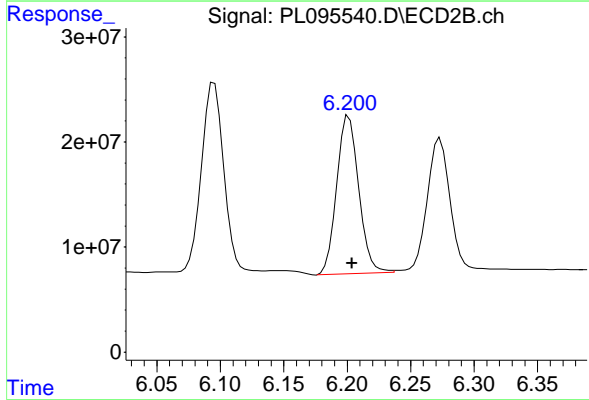
R.T.: 5.947 min
 Delta R.T.: -0.002 min
 Response: 205588519
 Conc: 62.93 ng/ml



#17 4,4' -DDT

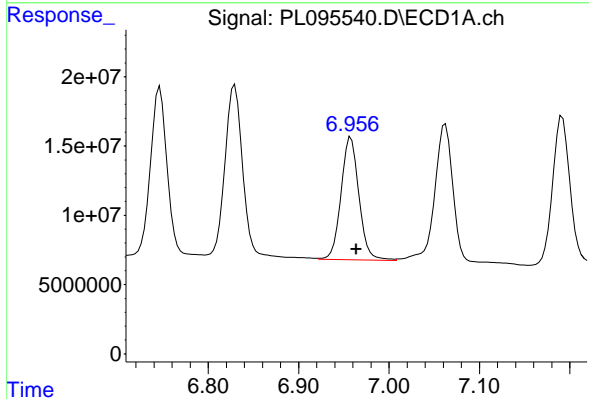
R.T.: 7.062 min
 Delta R.T.: -0.006 min
 Response: 136889753
 Conc: 48.06 ng/ml

Instrument :
 ECD_L
 ClientSampleId :
 SMALL-PILE-AMSD



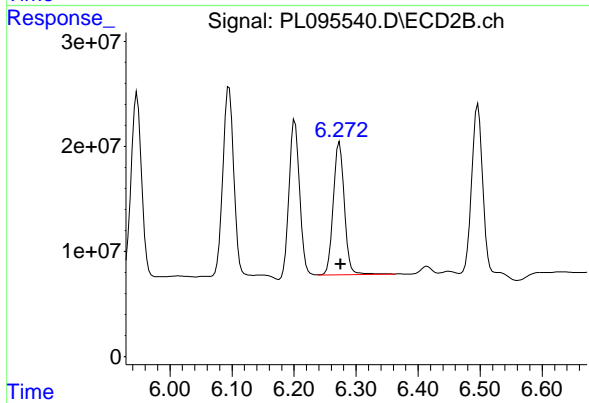
#17 4,4' -DDT

R.T.: 6.200 min
 Delta R.T.: -0.004 min
 Response: 182357599
 Conc: 53.07 ng/ml m



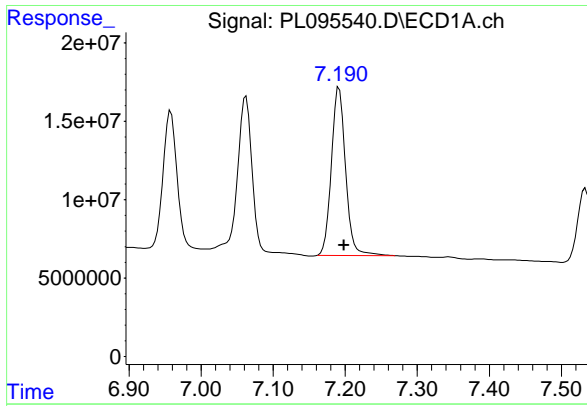
#18 Endrin aldehyde

R.T.: 6.958 min
 Delta R.T.: -0.006 min
 Response: 121838563
 Conc: 52.50 ng/ml



#18 Endrin aldehyde

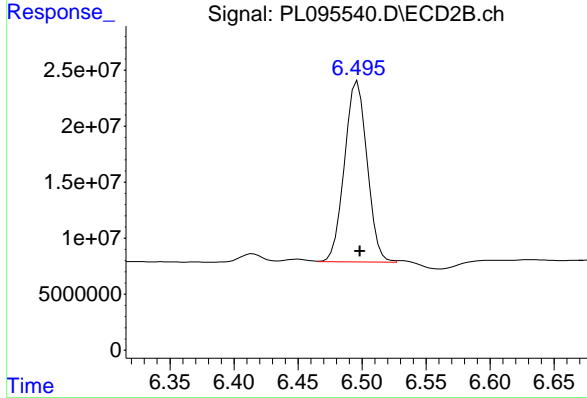
R.T.: 6.273 min
 Delta R.T.: -0.002 min
 Response: 156690576
 Conc: 59.96 ng/ml



#19 Endosulfan Sulfate

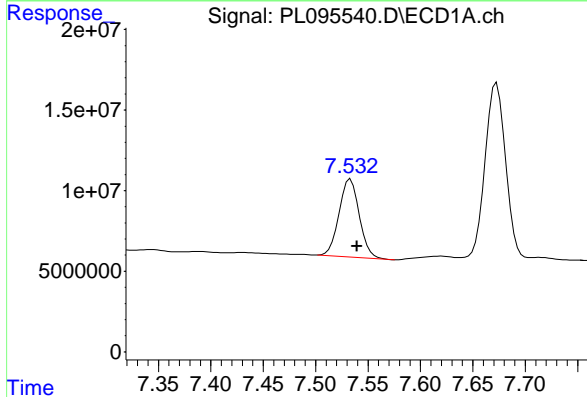
R.T.: 7.192 min
 Delta R.T.: -0.007 min
 Response: 145754397
 Conc: 52.02 ng/ml

Instrument :
 ECD_L
 ClientSampleId :
 SMALL-PILE-AMSD



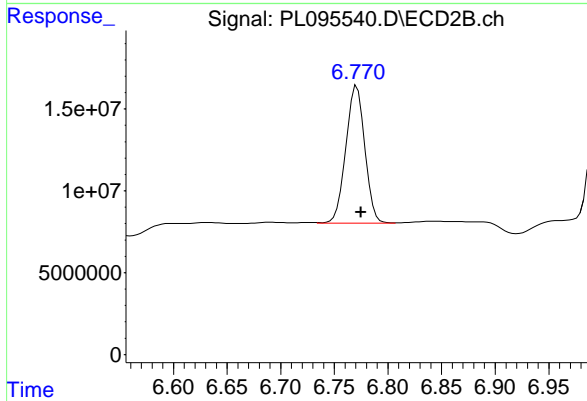
#19 Endosulfan Sulfate

R.T.: 6.495 min
 Delta R.T.: -0.003 min
 Response: 197733664
 Conc: 59.60 ng/ml m



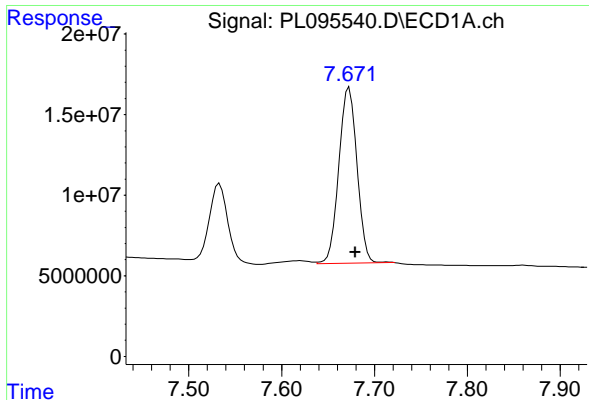
#20 Methoxychlor

R.T.: 7.533 min
 Delta R.T.: -0.006 min
 Response: 64857304
 Conc: 46.49 ng/ml



#20 Methoxychlor

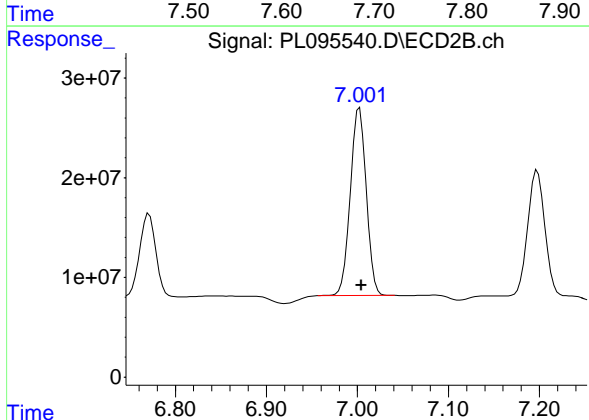
R.T.: 6.770 min
 Delta R.T.: -0.005 min
 Response: 103407709
 Conc: 54.21 ng/ml m



#21 Endrin ketone

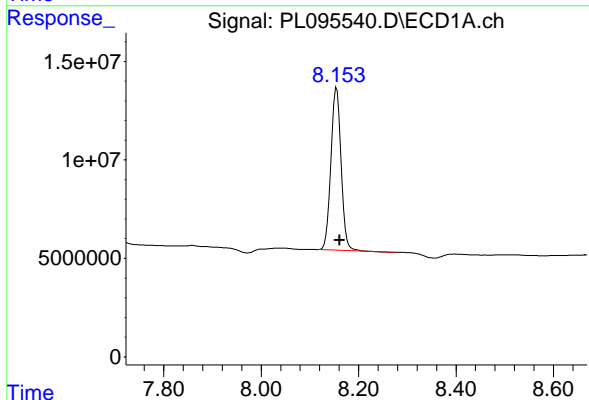
R.T.: 7.673 min
 Delta R.T.: -0.006 min
 Response: 148266179
 Conc: 52.01 ng/ml

Instrument :
 ECD_L
 ClientSampleId :
 SMALL-PILE-AMSD



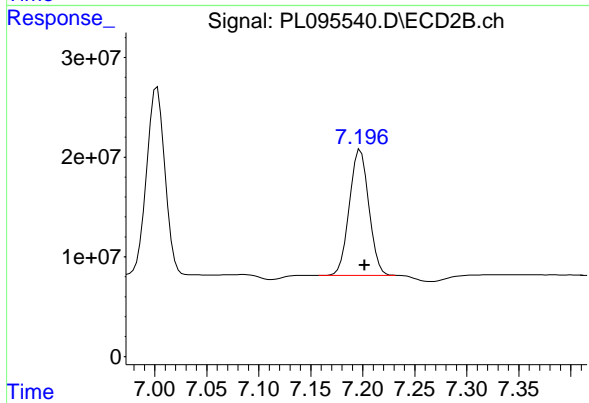
#21 Endrin ketone

R.T.: 7.002 min
 Delta R.T.: -0.002 min
 Response: 231300944
 Conc: 65.69 ng/ml



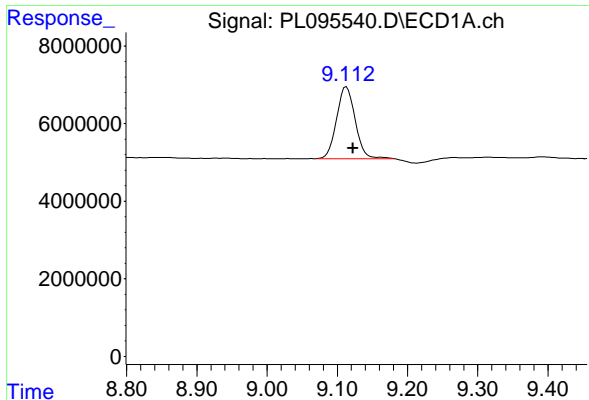
#22 Mirex

R.T.: 8.155 min
 Delta R.T.: -0.006 min
 Response: 118674730
 Conc: 49.95 ng/ml



#22 Mirex

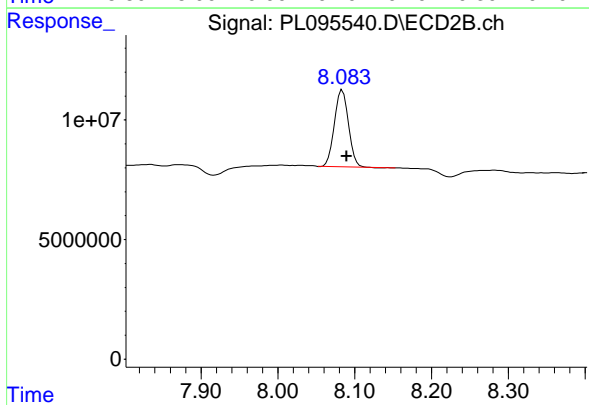
R.T.: 7.196 min
 Delta R.T.: -0.005 min
 Response: 164578711
 Conc: 57.10 ng/ml m



#28 Decachlorobiphenyl

R.T.: 9.113 min
Delta R.T.: -0.009 min
Response: 34079997
Conc: 12.30 ng/ml

Instrument :
ECD_L
ClientSampleId :
SMALL-PILE-AMSD



#28 Decachlorobiphenyl

R.T.: 8.084 min
Delta R.T.: -0.006 min
Response: 40290352
Conc: 13.61 ng/ml