

Data Path : Z:\pestpcbsrv\HPCHEM1\ECD_L\Data\PL042325\
 Data File : PL095333.D
 Signal(s) : Signal #1: ECD1A.ch Signal #2: ECD2B.ch
 Acq On : 23 Apr 2025 12:26
 Operator : AR\AJ
 Sample : PSTDICC005
 Misc :
 ALS Vial : 9 Sample Multiplier: 1

Instrument :
 ECD_L
 ClientSampleId :
 PSTDICC005

Integration File signal 1: autoint1.e
 Integration File signal 2: autoint2.e
 Quant Time: Apr 23 12:35:44 2025
 Quant Method : Z:\pestpcbsrv\HPCHEM1\ECD_L\methods\PL042325.M
 Quant Title : GC Extractables
 QLast Update : Wed Apr 23 12:35:34 2025
 Response via : Initial Calibration
 Integrator: ChemStation

Volume Inj. : 1 µl
 Signal #1 Phase : ZB-MR2 Signal #2 Phase: ZB-MR2
 Signal #1 Info : 30M x 0.32mm x0.5 Signal #2 Info : 30M x 0.32mm x0.25µm

Compound	RT#1	RT#2	Resp#1	Resp#2	ng/ml	ng/ml

System Monitoring Compounds						
1) SA Tetrachlo...	3.595	2.905	17226547	16774274	5.277	5.275
28) SA Decachlor...	9.124	8.089	15494795	15593893	5.592	5.270
Target Compounds						
2) A alpha-BHC	4.046	3.415	24630161	21718521	4.972	4.882
3) MA gamma-BHC...	4.378	3.749	24047920	21843021	5.080	4.966
4) MA Heptachlor	4.976	4.104	24089854	22426031	5.266	5.147
5) MB Aldrin	5.317	4.389	23939616	20545826	5.212	4.992
6) B beta-BHC	4.564	4.043	11239021	11256224	5.436	5.422
7) B delta-BHC	4.812	4.280	24459248	21692758	5.259	4.950
8) B Heptachlo...	5.739	4.893	21350448	20141703	5.331	5.214
9) A Endosulfan I	6.122	5.266	20308048	18652835	5.348	5.096
10) B gamma-Chl...	5.993	5.146	21145113	21190077	5.183	5.229
11) B alpha-Chl...	6.074	5.210	21268601	20714715	5.231	5.203
12) B 4,4'-DDE	6.242	5.397	20770904	20747185	5.298	5.101
13) MA Dieldrin	6.396	5.532	19971571	21318751	5.181	5.242
14) MA Endrin	6.622	5.806	16946885	18649649	5.321	5.123
15) B Endosulfa...	6.835	6.097	17567027	18938000	5.503	5.274
16) A 4,4'-DDD	6.753	5.949	14708945	16655803	5.196	5.099
17) MA 4,4'-DDT	7.068	6.204	14262305	17073765	5.007	4.969
18) B Endrin al...	6.964	6.275	12367450	13751187	5.329	5.262
19) B Endosulfa...	7.198	6.498	15108097	17635344	5.392	5.315
20) A Methoxychlor	7.540	6.774	7589024	10262527	5.440	5.380
21) B Endrin ke...	7.679	7.004	15300793	18268527	5.367	5.188
22) Mirex	8.161	7.202	13844446	15277297	5.827	5.304

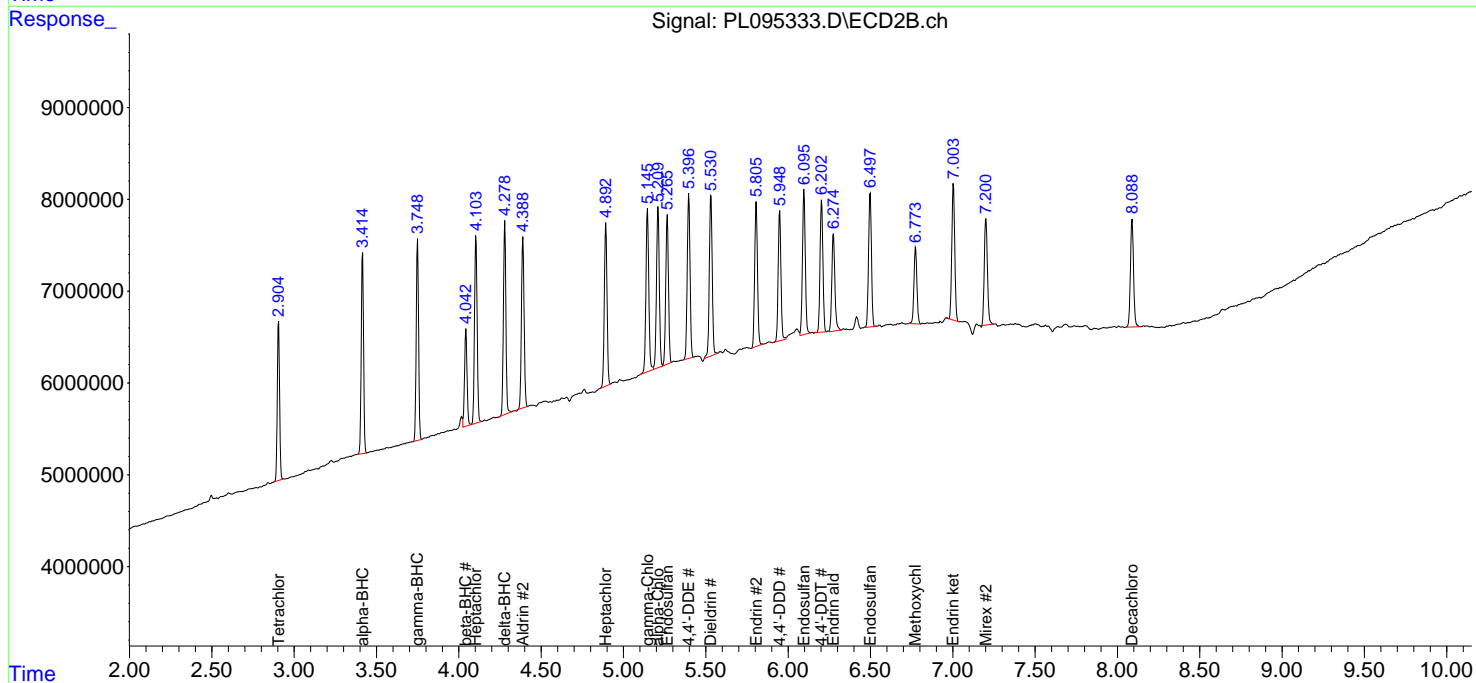
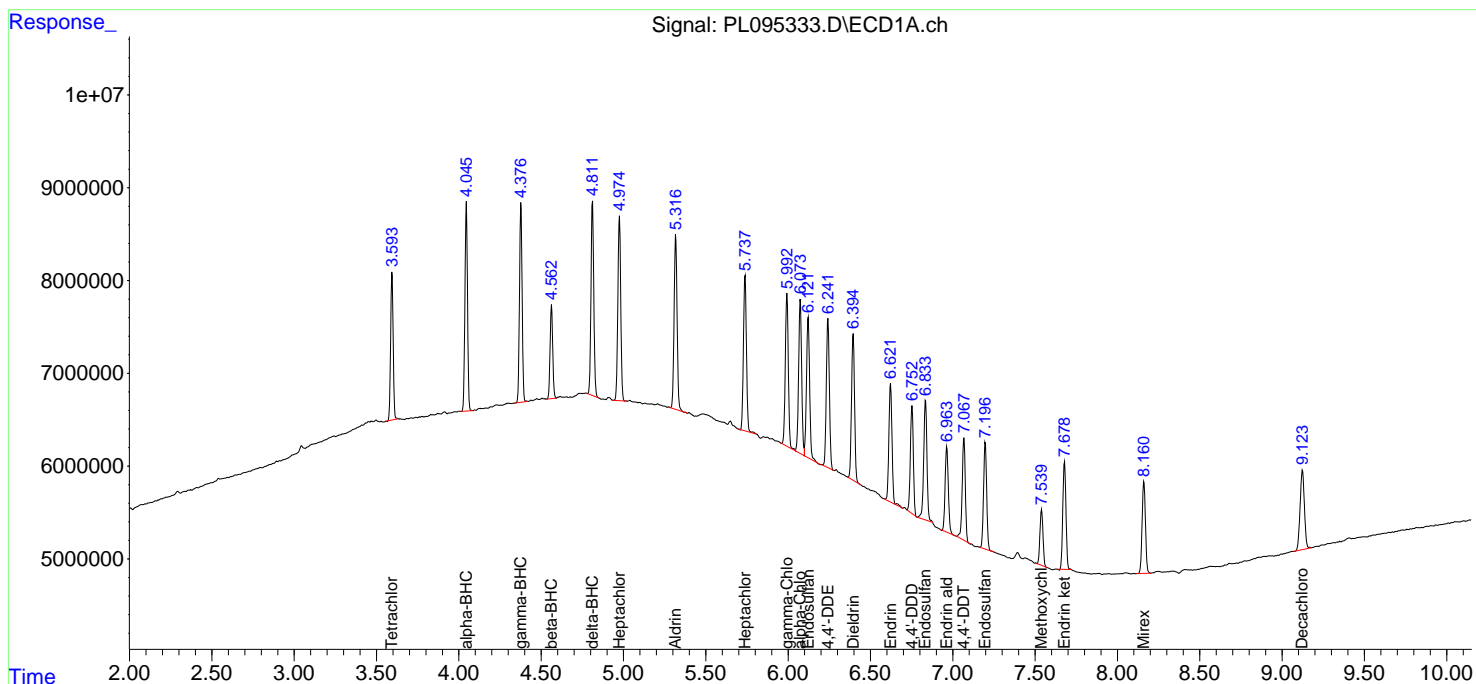
(f)=RT Delta > 1/2 Window (#)=Amounts differ by > 25% (m)=manual int.

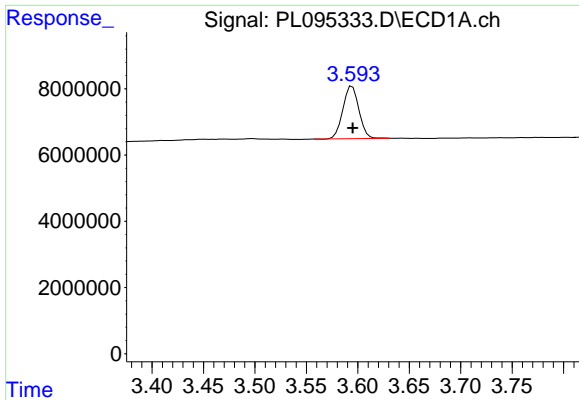
Data Path : Z:\pestpcbsrv\HPCHEM1\ECD_L\Data\PL042325\
 Data File : PL095333.D
 Signal(s) : Signal #1: ECD1A.ch Signal #2: ECD2B.ch
 Acq On : 23 Apr 2025 12:26
 Operator : AR\AJ
 Sample : PSTDICC005
 Misc :
 ALS Vial : 9 Sample Multiplier: 1

Instrument :
 ECD_L
 ClientSampleId :
 PSTDICC005

Integration File signal 1: autoint1.e
 Integration File signal 2: autoint2.e
 Quant Time: Apr 23 12:35:44 2025
 Quant Method : Z:\pestpcbsrv\HPCHEM1\ECD_L\methods\PL042325.M
 Quant Title : GC Extractables
 QLast Update : Wed Apr 23 12:35:34 2025
 Response via : Initial Calibration
 Integrator: ChemStation

Volume Inj. : 1 µl
 Signal #1 Phase : ZB-MR1 Signal #2 Phase: ZB-MR2
 Signal #1 Info : 30M x 0.32mm x0.5 Signal #2 Info : 30M x 0.32mm x0.25µm

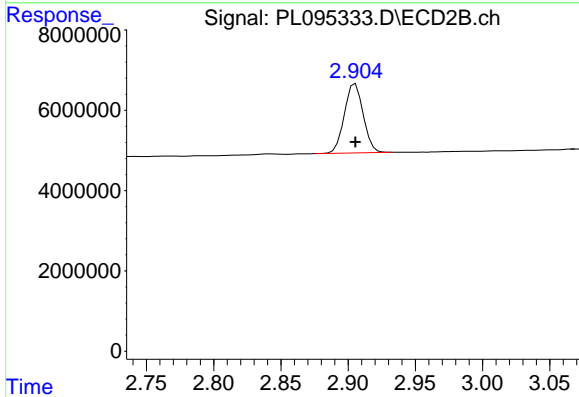




#1 Tetrachloro-m-xylene

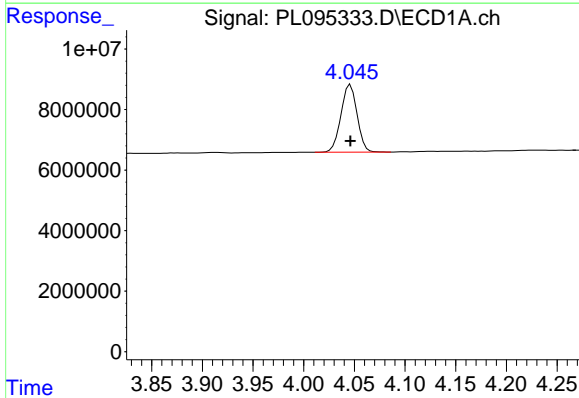
R.T.: 3.595 min
 Delta R.T.: 0.000 min
 Response: 17226547
 Conc: 5.28 ng/ml

Instrument :
 ECD_L
 ClientSampleId :
 PSTDICC005



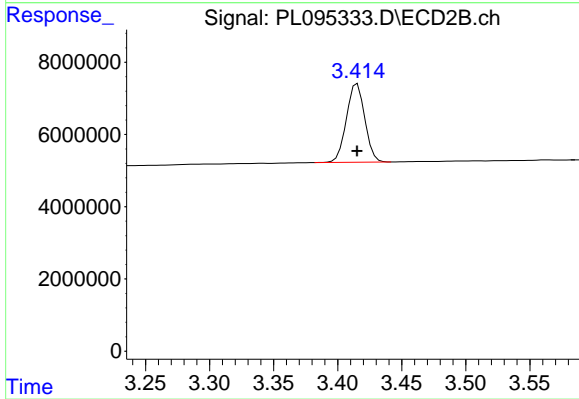
#1 Tetrachloro-m-xylene

R.T.: 2.905 min
 Delta R.T.: 0.000 min
 Response: 16774274
 Conc: 5.28 ng/ml



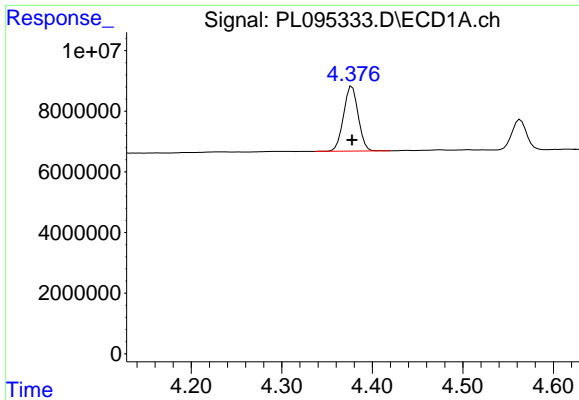
#2 alpha-BHC

R.T.: 4.046 min
 Delta R.T.: 0.000 min
 Response: 24630161
 Conc: 4.97 ng/ml



#2 alpha-BHC

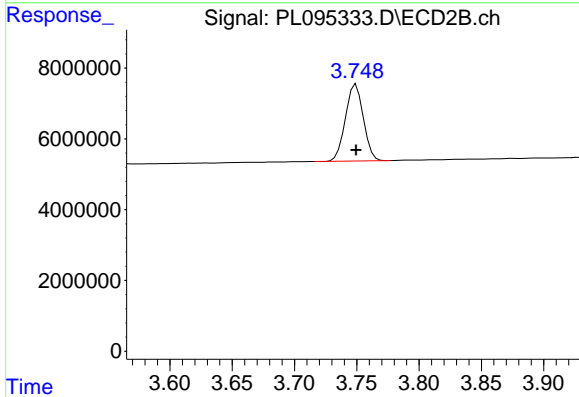
R.T.: 3.415 min
 Delta R.T.: 0.000 min
 Response: 21718521
 Conc: 4.88 ng/ml



#3 gamma-BHC (Lindane)

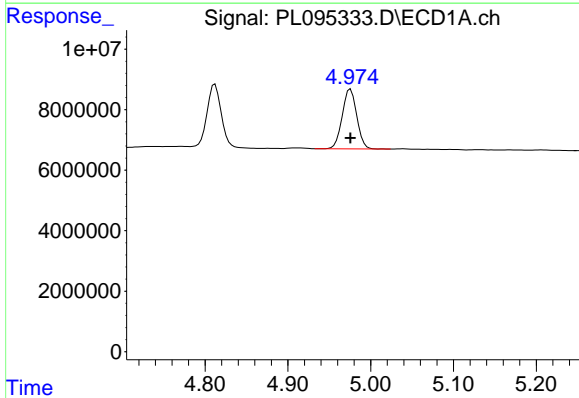
R.T.: 4.378 min
 Delta R.T.: 0.000 min
 Response: 24047920
 Conc: 5.08 ng/ml

Instrument :
 ECD_L
 ClientSampleId :
 PSTDICC005



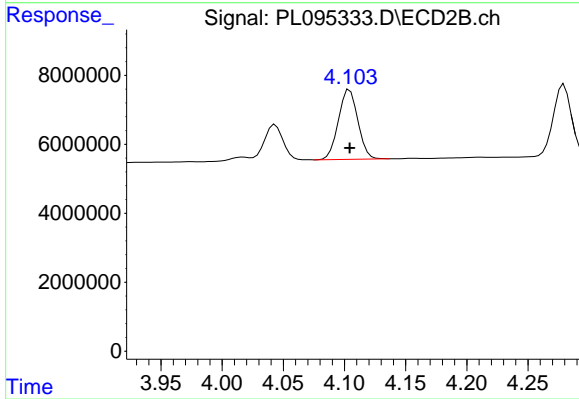
#3 gamma-BHC (Lindane)

R.T.: 3.749 min
 Delta R.T.: 0.000 min
 Response: 21843021
 Conc: 4.97 ng/ml



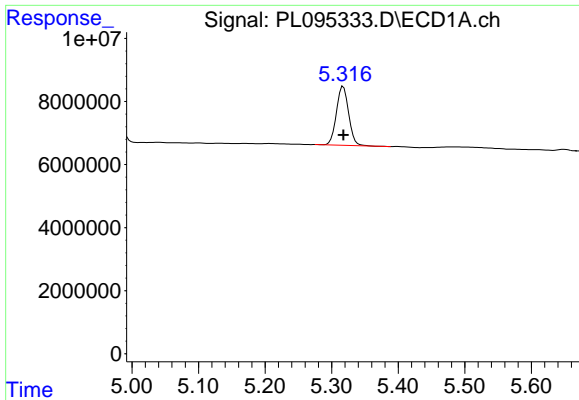
#4 Heptachlor

R.T.: 4.976 min
 Delta R.T.: 0.000 min
 Response: 24089854
 Conc: 5.27 ng/ml



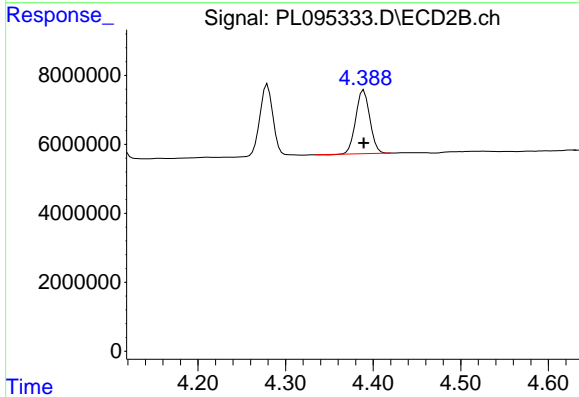
#4 Heptachlor

R.T.: 4.104 min
 Delta R.T.: 0.000 min
 Response: 22426031
 Conc: 5.15 ng/ml

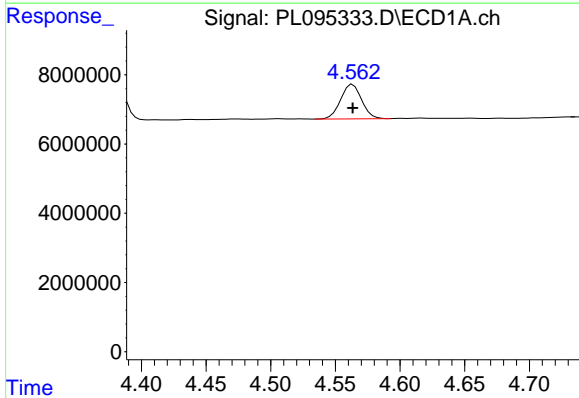


#5 Aldrin
 R.T.: 5.317 min
 Delta R.T.: 0.000 min
 Response: 23939616
 Conc: 5.21 ng/ml

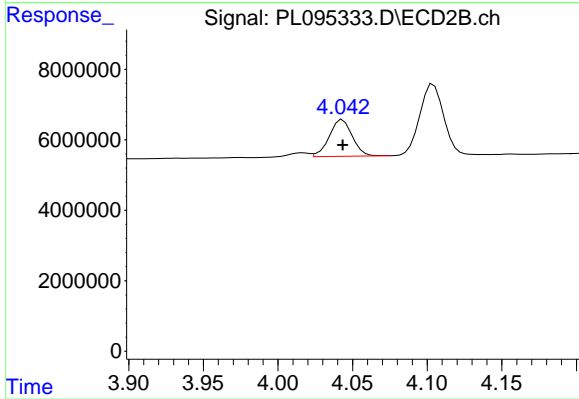
Instrument :
 ECD_L
 ClientSampleId :
 PSTDICC005



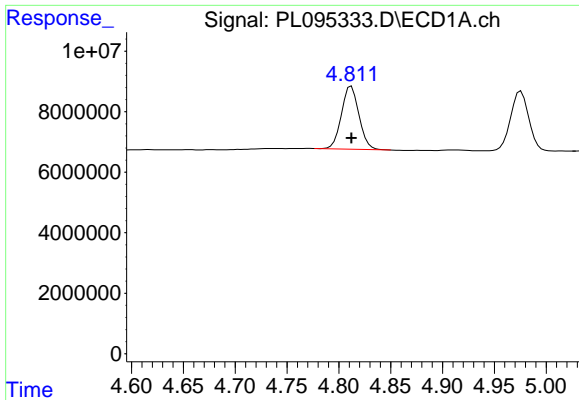
#5 Aldrin
 R.T.: 4.389 min
 Delta R.T.: 0.000 min
 Response: 20545826
 Conc: 4.99 ng/ml



#6 beta-BHC
 R.T.: 4.564 min
 Delta R.T.: 0.000 min
 Response: 11239021
 Conc: 5.44 ng/ml



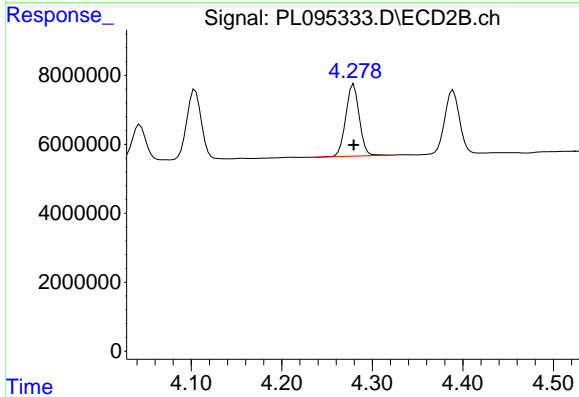
#6 beta-BHC
 R.T.: 4.043 min
 Delta R.T.: 0.000 min
 Response: 11256224
 Conc: 5.42 ng/ml



#7 delta-BHC

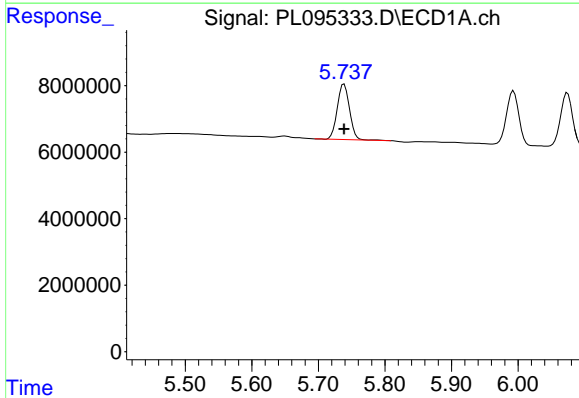
R.T.: 4.812 min
 Delta R.T.: 0.000 min
 Response: 24459248
 Conc: 5.26 ng/ml

Instrument :
 ECD_L
 ClientSampleId :
 PSTDICC005



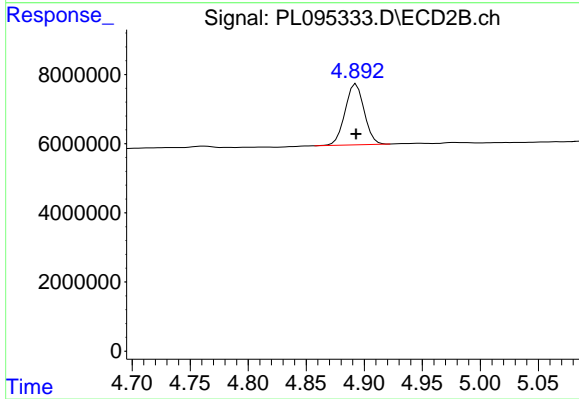
#7 delta-BHC

R.T.: 4.280 min
 Delta R.T.: 0.000 min
 Response: 21692758
 Conc: 4.95 ng/ml



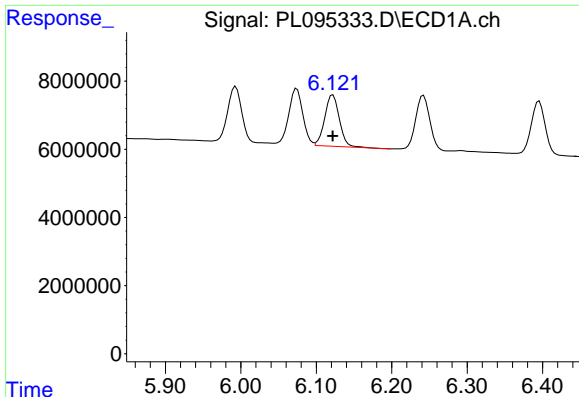
#8 Heptachlor epoxide

R.T.: 5.739 min
 Delta R.T.: 0.000 min
 Response: 21350448
 Conc: 5.33 ng/ml



#8 Heptachlor epoxide

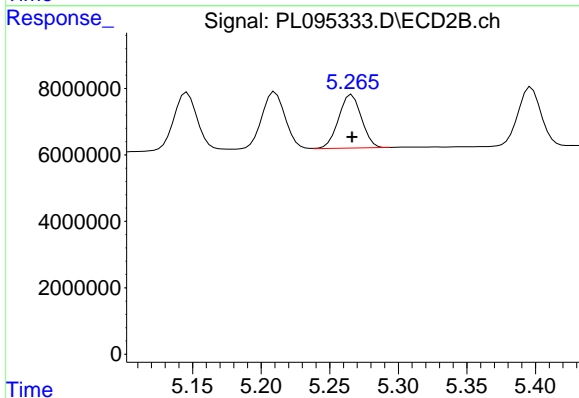
R.T.: 4.893 min
 Delta R.T.: 0.000 min
 Response: 20141703
 Conc: 5.21 ng/ml



#9 Endosulfan I

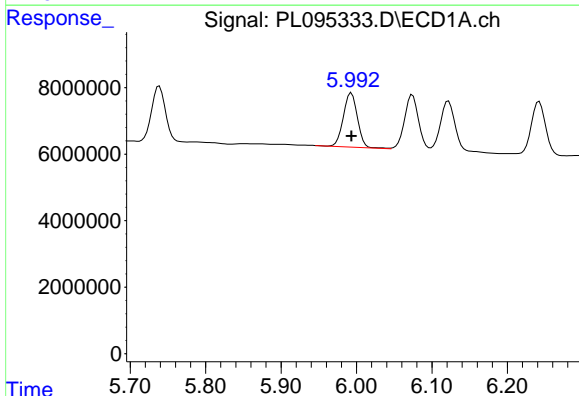
R.T.: 6.122 min
 Delta R.T.: 0.000 min
 Response: 20308048
 Conc: 5.35 ng/ml

Instrument :
 ECD_L
 ClientSampleId :
 PSTDICC005



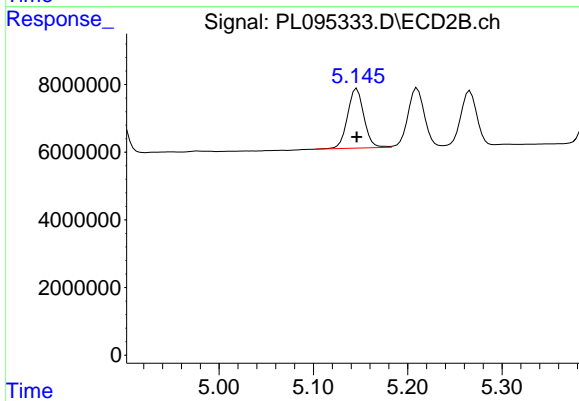
#9 Endosulfan I

R.T.: 5.266 min
 Delta R.T.: 0.000 min
 Response: 18652835
 Conc: 5.10 ng/ml



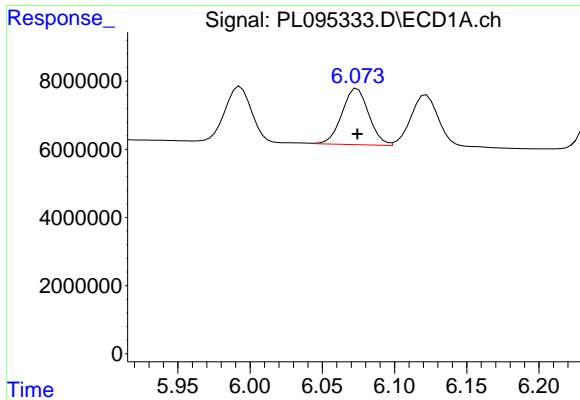
#10 gamma-Chlordane

R.T.: 5.993 min
 Delta R.T.: 0.000 min
 Response: 21145113
 Conc: 5.18 ng/ml



#10 gamma-Chlordane

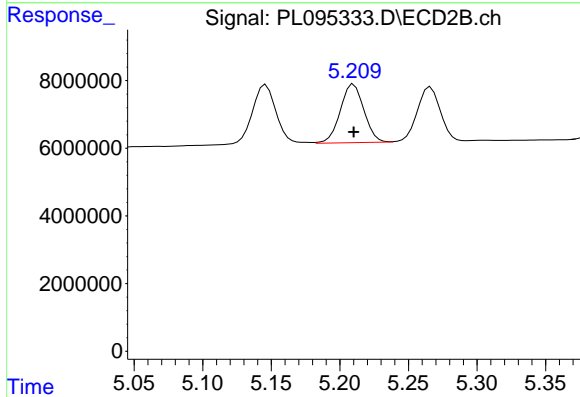
R.T.: 5.146 min
 Delta R.T.: 0.000 min
 Response: 21190077
 Conc: 5.23 ng/ml



#11 alpha-Chlordane

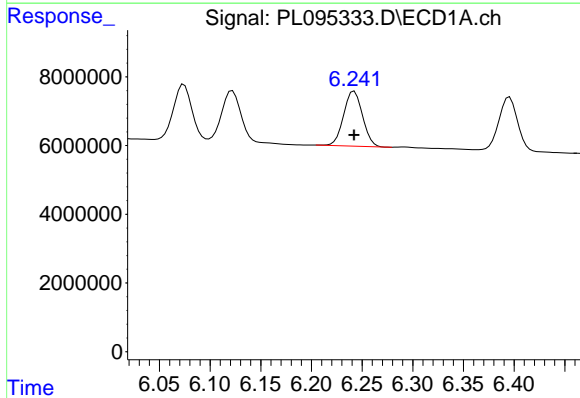
R.T.: 6.074 min
 Delta R.T.: 0.000 min
 Response: 21268601
 Conc: 5.23 ng/ml

Instrument :
 ECD_L
 ClientSampleId :
 PSTDICC005



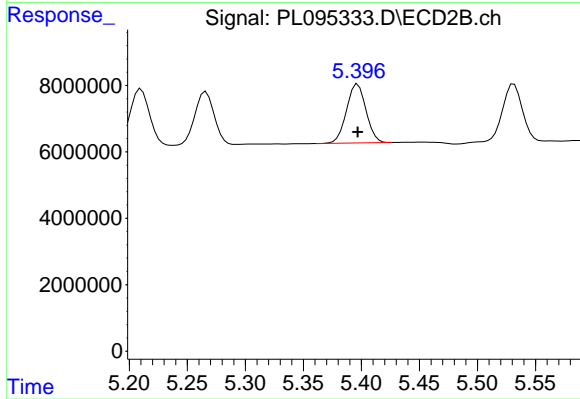
#11 alpha-Chlordane

R.T.: 5.210 min
 Delta R.T.: 0.000 min
 Response: 20714715
 Conc: 5.20 ng/ml



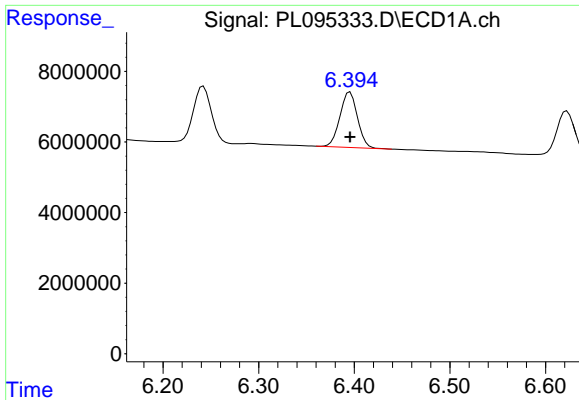
#12 4,4'-DDE

R.T.: 6.242 min
 Delta R.T.: 0.000 min
 Response: 20770904
 Conc: 5.30 ng/ml



#12 4,4'-DDE

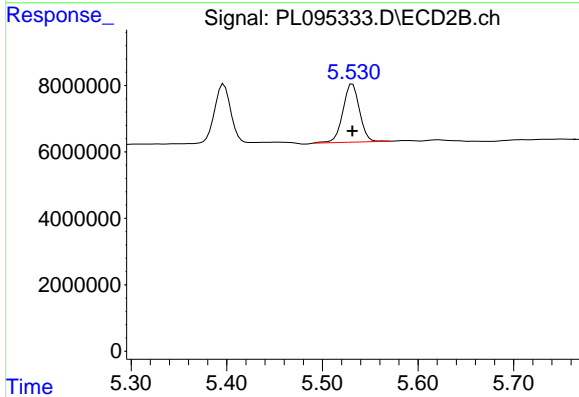
R.T.: 5.397 min
 Delta R.T.: 0.000 min
 Response: 20747185
 Conc: 5.10 ng/ml



#13 Dieldrin

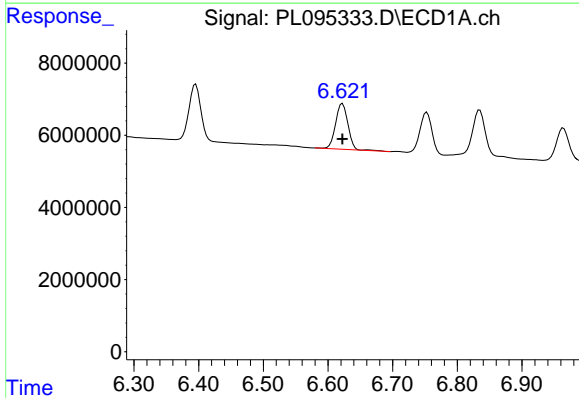
R.T.: 6.396 min
 Delta R.T.: 0.000 min
 Response: 19971571
 Conc: 5.18 ng/ml

Instrument :
 ECD_L
 ClientSampleId :
 PSTDICC005



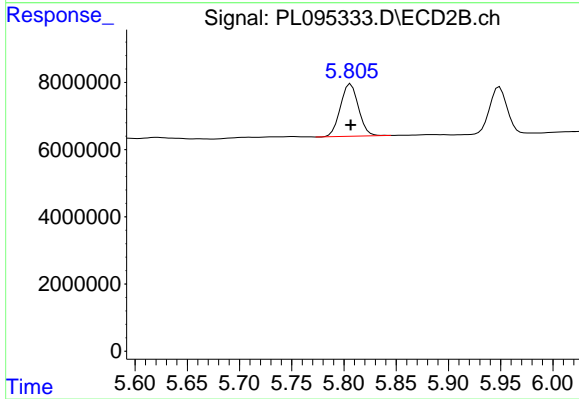
#13 Dieldrin

R.T.: 5.532 min
 Delta R.T.: 0.000 min
 Response: 21318751
 Conc: 5.24 ng/ml



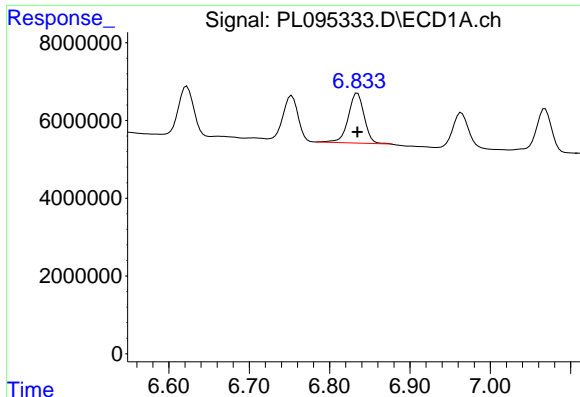
#14 Endrin

R.T.: 6.622 min
 Delta R.T.: 0.000 min
 Response: 16946885
 Conc: 5.32 ng/ml



#14 Endrin

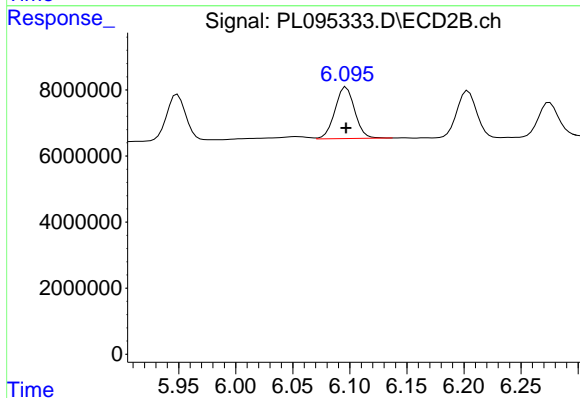
R.T.: 5.806 min
 Delta R.T.: 0.000 min
 Response: 18649649
 Conc: 5.12 ng/ml



#15 Endosulfan II

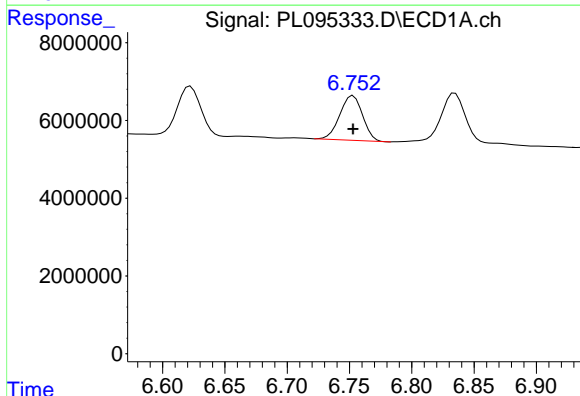
R.T.: 6.835 min
 Delta R.T.: 0.000 min
 Response: 17567027
 Conc: 5.50 ng/ml

Instrument :
 ECD_L
 ClientSampleId :
 PSTDICC005



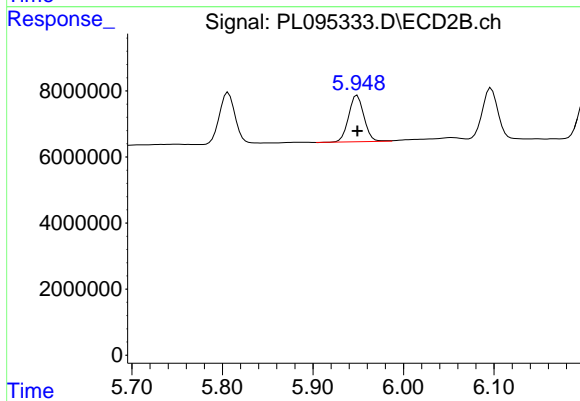
#15 Endosulfan II

R.T.: 6.097 min
 Delta R.T.: 0.000 min
 Response: 18938000
 Conc: 5.27 ng/ml



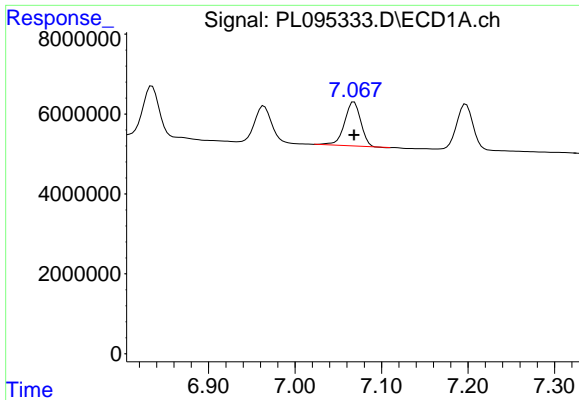
#16 4,4'-DDD

R.T.: 6.753 min
 Delta R.T.: 0.000 min
 Response: 14708945
 Conc: 5.20 ng/ml



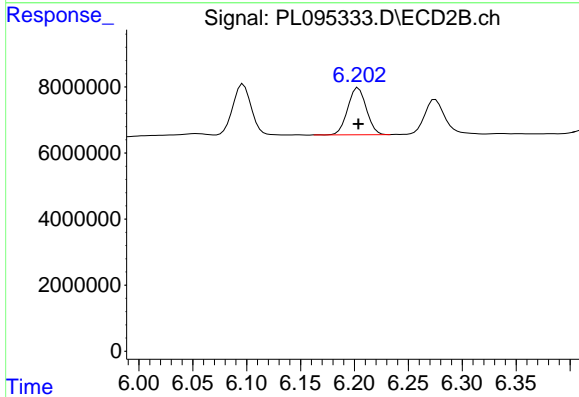
#16 4,4'-DDD

R.T.: 5.949 min
 Delta R.T.: 0.000 min
 Response: 16655803
 Conc: 5.10 ng/ml

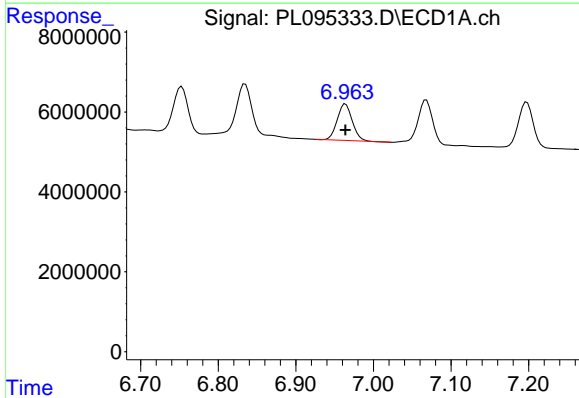


#17 4,4'-DDT
 R.T.: 7.068 min
 Delta R.T.: 0.000 min
 Response: 14262305
 Conc: 5.01 ng/ml

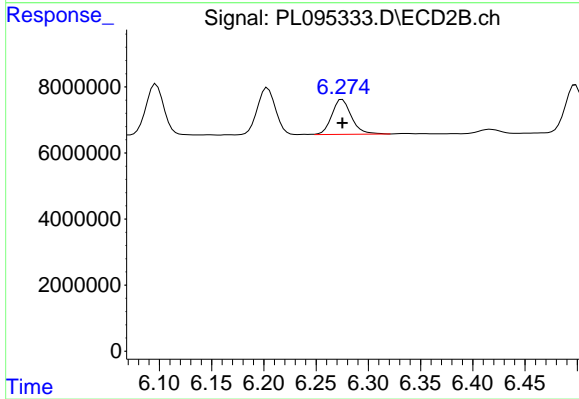
Instrument :
 ECD_L
 ClientSampleId :
 PSTDICC005



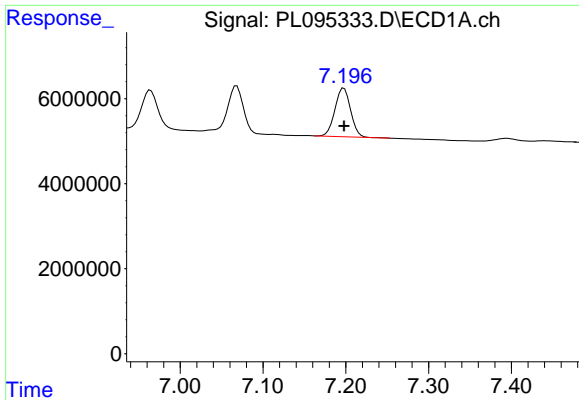
#17 4,4'-DDT
 R.T.: 6.204 min
 Delta R.T.: 0.000 min
 Response: 17073765
 Conc: 4.97 ng/ml



#18 Endrin aldehyde
 R.T.: 6.964 min
 Delta R.T.: 0.000 min
 Response: 12367450
 Conc: 5.33 ng/ml



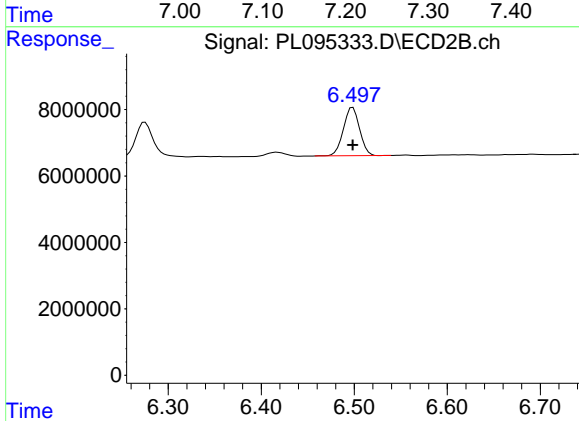
#18 Endrin aldehyde
 R.T.: 6.275 min
 Delta R.T.: 0.000 min
 Response: 13751187
 Conc: 5.26 ng/ml



#19 Endosulfan Sulfate

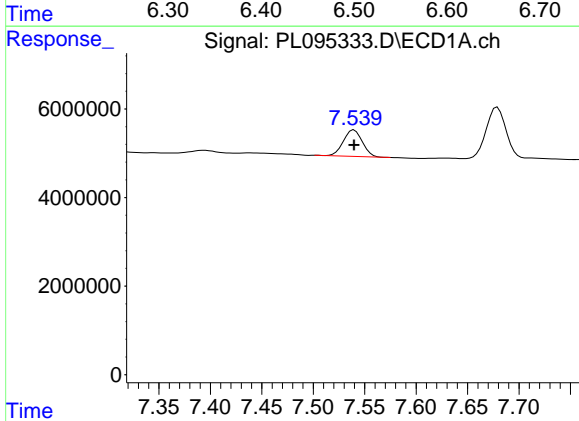
R.T.: 7.198 min
 Delta R.T.: 0.000 min
 Response: 15108097
 Conc: 5.39 ng/ml

Instrument :
 ECD_L
 ClientSampleId :
 PSTDICC005



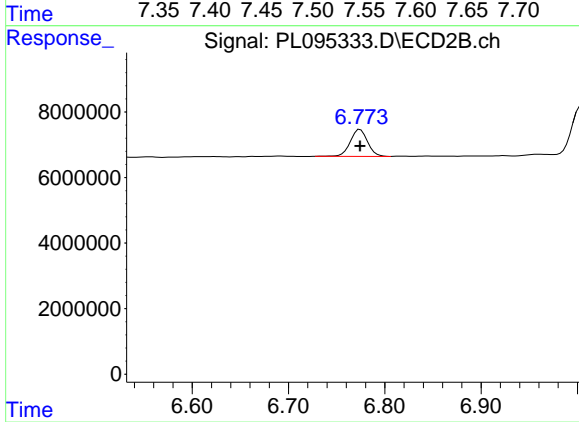
#19 Endosulfan Sulfate

R.T.: 6.498 min
 Delta R.T.: 0.000 min
 Response: 17635344
 Conc: 5.32 ng/ml



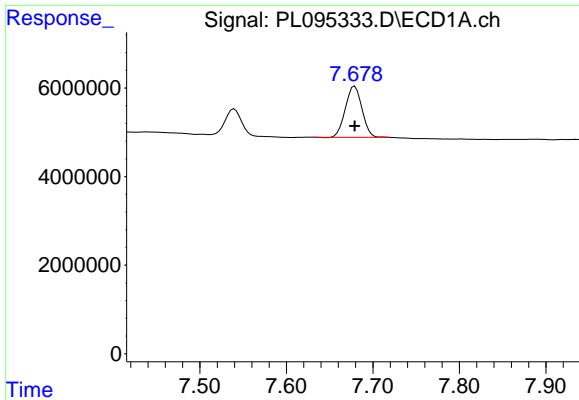
#20 Methoxychlor

R.T.: 7.540 min
 Delta R.T.: 0.000 min
 Response: 7589024
 Conc: 5.44 ng/ml



#20 Methoxychlor

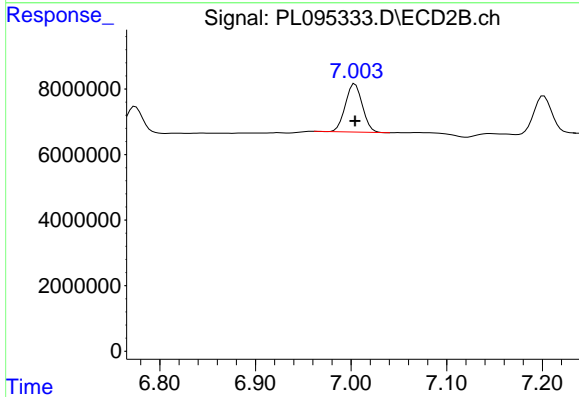
R.T.: 6.774 min
 Delta R.T.: 0.000 min
 Response: 10262527
 Conc: 5.38 ng/ml



#21 Endrin ketone

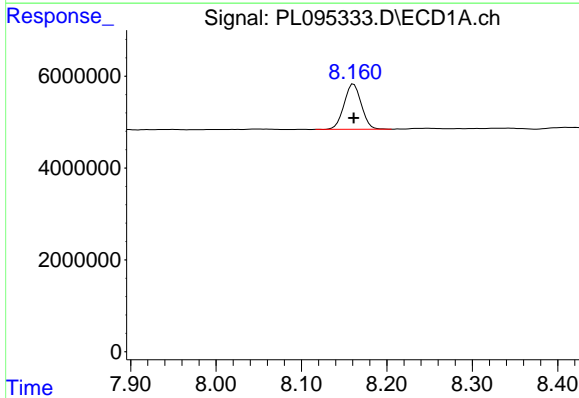
R.T.: 7.679 min
 Delta R.T.: 0.000 min
 Response: 15300793
 Conc: 5.37 ng/ml

Instrument :
 ECD_L
 ClientSampleId :
 PSTDICC005



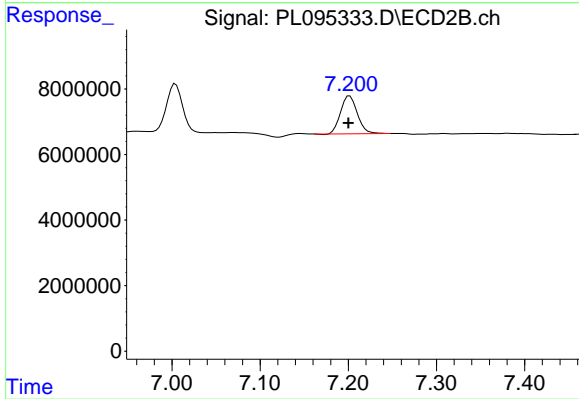
#21 Endrin ketone

R.T.: 7.004 min
 Delta R.T.: 0.000 min
 Response: 18268527
 Conc: 5.19 ng/ml



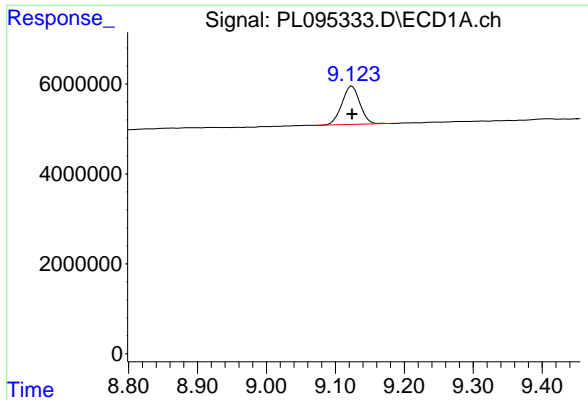
#22 Mirex

R.T.: 8.161 min
 Delta R.T.: 0.000 min
 Response: 13844446
 Conc: 5.83 ng/ml



#22 Mirex

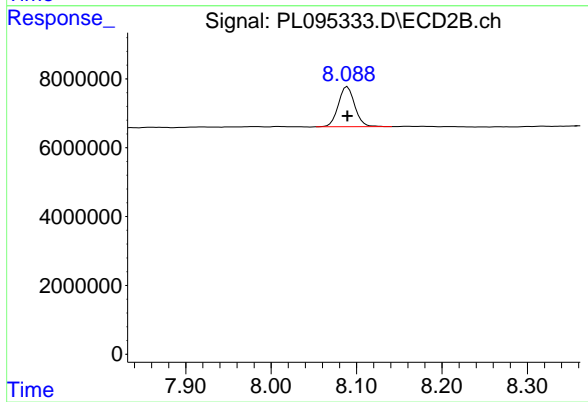
R.T.: 7.202 min
 Delta R.T.: 0.001 min
 Response: 15277297
 Conc: 5.30 ng/ml



#28 Decachlorobiphenyl

R.T.: 9.124 min
Delta R.T.: 0.000 min
Response: 15494795
Conc: 5.59 ng/ml

Instrument :
ECD_L
ClientSampleId :
PSTDICC005



#28 Decachlorobiphenyl

R.T.: 8.089 min
Delta R.T.: 0.000 min
Response: 15593893
Conc: 5.27 ng/ml