

Data Path : Z:\pestpcbsrv\HPCHEM1\ECD_L\Data\PL050625\
 Data File : PL095530.D
 Signal(s) : Signal #1: ECD1A.ch Signal #2: ECD2B.ch
 Acq On : 05 May 2025 09:35
 Operator : AR\AJ
 Sample : PSTDCCC050
 Misc :
 ALS Vial : 4 Sample Multiplier: 1

Instrument :
 ECD_L
 ClientSampleId :
 PSTDCCC050

Integration File signal 1: autoint1.e
 Integration File signal 2: autoint2.e
 Quant Time: May 06 01:38:21 2025
 Quant Method : Z:\pestpcbsrv\HPCHEM1\ECD_L\methods\PL042325.M
 Quant Title : GC Extractables
 QLast Update : Wed Apr 23 16:23:18 2025
 Response via : Initial Calibration
 Integrator: ChemStation

Volume Inj. : 1 µl
 Signal #1 Phase : ZB-MR1 Signal #2 Phase: ZB-MR2
 Signal #1 Info : 30M x 0.32mm x0.5 Signal #2 Info : 30M x 0.32mm x0.25µm

	Compound	RT#1	RT#2	Resp#1	Resp#2	ng/ml	ng/ml

System Monitoring Compounds							
1)	SA Tetrachlo...	3.593	2.910	140.6E6	172.5E6	43.081	54.248 #
28)	SA Decachlor...	9.116	8.086	121.7E6	144.1E6	43.907	48.697
Target Compounds							
2)	A alpha-BHC	4.044	3.419	217.9E6	264.7E6	43.987	59.501 #
3)	MA gamma-BHC...	4.375	3.752	219.8E6	251.3E6	46.427	57.127
4)	MA Heptachlor	4.973	4.106	197.0E6	242.9E6	43.062	55.753 #
5)	MB Aldrin	5.315	4.391	211.9E6	239.5E6	46.136	58.203 #
6)	B beta-BHC	4.560	4.046	88049620	115.1E6	42.587	55.466 #
7)	B delta-BHC	0.000	4.282	0	253.5E6	N.D.	57.841 #
8)	B Heptachlo...	5.736	4.894	190.9E6	219.5E6	47.654	56.839
9)	A Endosulfan I	6.119	5.266	183.5E6	210.2E6	48.316	57.420
10)	B gamma-Chl...	5.990	5.146	195.9E6	227.9E6	48.022	56.228
11)	B alpha-Chl...	6.071	5.211	193.7E6	222.4E6	47.641	55.863
12)	B 4,4'-DDE	6.239	5.396	187.1E6	222.8E6	47.713	54.780
13)	MA Dieldrin	6.391	5.532	181.1E6	232.8E6	46.976	57.244
14)	MA Endrin	6.619	5.806	151.8E6	200.8E6	47.674	55.158
15)	B Endosulfa...	6.831	6.096	173.1E6	202.1E6	54.238	56.276
16)	A 4,4'-DDD	6.749	5.948	144.1E6	189.4E6	50.898	57.978
17)	MA 4,4'-DDT	7.064	6.202	133.4E6	193.2E6	46.819	56.231
18)	B Endrin al...	6.960	6.275	113.4E6	146.6E6	48.851	56.099
19)	B Endosulfa...	7.193	6.498	130.8E6	182.3E6	46.688	54.953
20)	A Methoxychlor	7.534	6.772	60523196	102.2E6	43.382	53.583
21)	B Endrin ke...	7.675	7.004	134.3E6	210.7E6	47.120	59.843 #
22)	Mirex	8.156	7.200	111.9E6	158.7E6	47.076	55.046
24)	Chlordane-2	5.315f	0.000	211.9E6	0	1000.877	N.D. #
25)	Chlordane-3	5.990	5.146	195.9E6	227.9E6	251.498	441.085 #
26)	Chlordane-4	6.071	5.211	193.7E6	222.4E6	205.435	511.708 #
27)	Chlordane-5	0.000	6.096	0	202.1E6	N.D.	1093.933 #

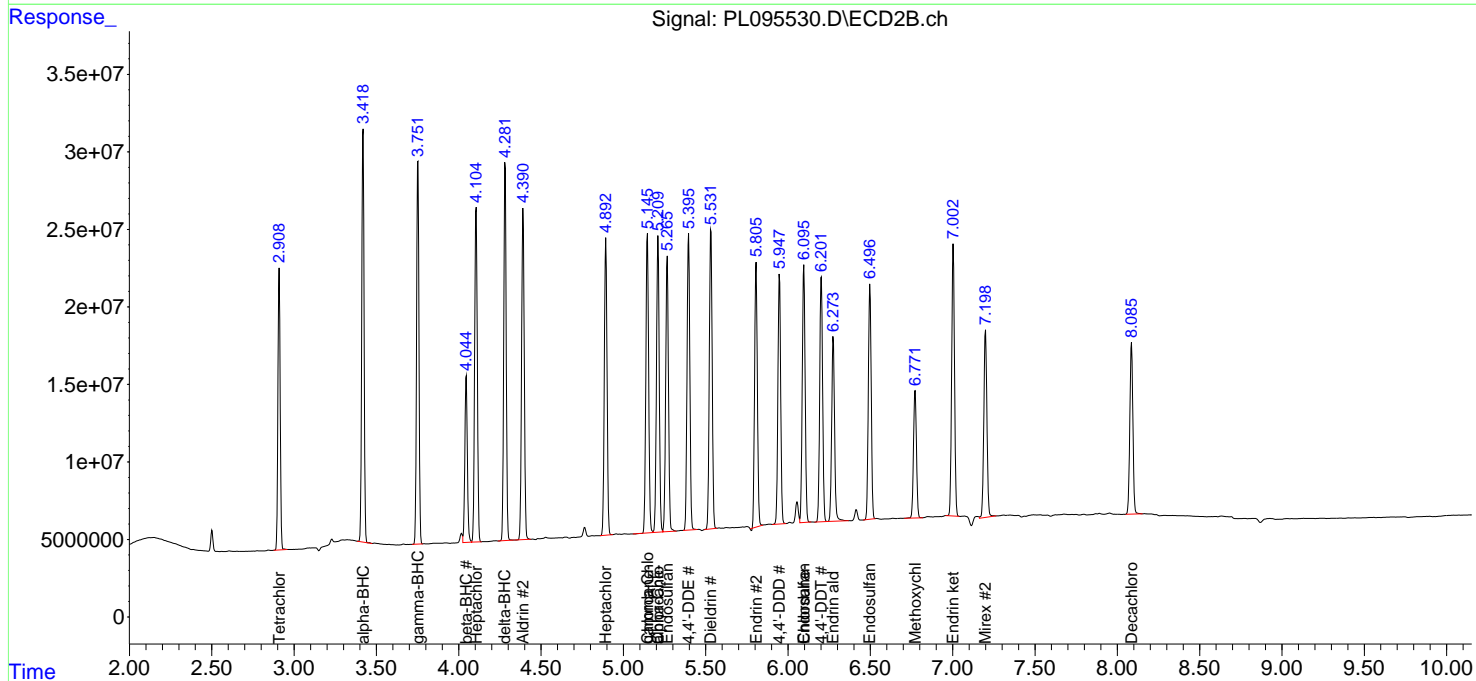
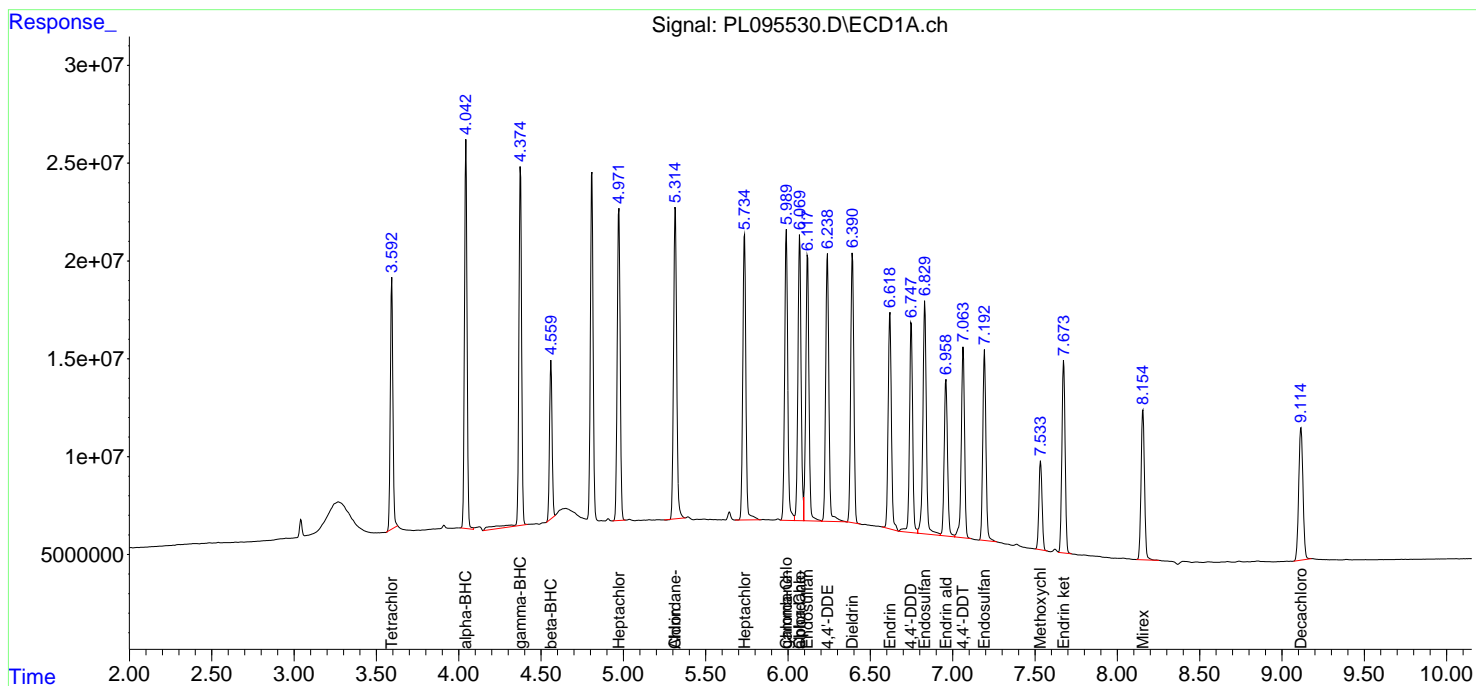
(f)=RT Delta > 1/2 Window (#)=Amounts differ by > 25% (m)=manual int.

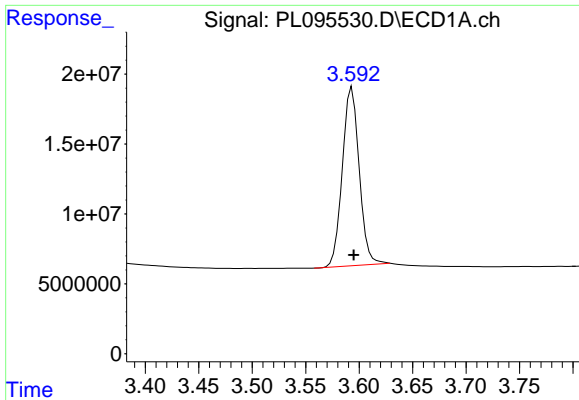
Data Path : Z:\pestpcbsrv\HPCHEM1\ECD_L\Data\PL050625\
 Data File : PL095530.D
 Signal(s) : Signal #1: ECD1A.ch Signal #2: ECD2B.ch
 Acq On : 05 May 2025 09:35
 Operator : AR\AJ
 Sample : PSTDCCC050
 Misc :
 ALS Vial : 4 Sample Multiplier: 1

Instrument :
 ECD_L
 ClientSampleId :
 PSTDCCC050

Integration File signal 1: autoint1.e
 Integration File signal 2: autoint2.e
 Quant Time: May 06 01:38:21 2025
 Quant Method : Z:\pestpcbsrv\HPCHEM1\ECD_L\methods\PL042325.M
 Quant Title : GC Extractables
 QLast Update : Wed Apr 23 16:23:18 2025
 Response via : Initial Calibration
 Integrator: ChemStation

Volume Inj. : 1 µl
 Signal #1 Phase : ZB-MR1 Signal #2 Phase: ZB-MR2
 Signal #1 Info : 30M x 0.32mm x0.5 Signal #2 Info : 30M x 0.32mm x0.25µm

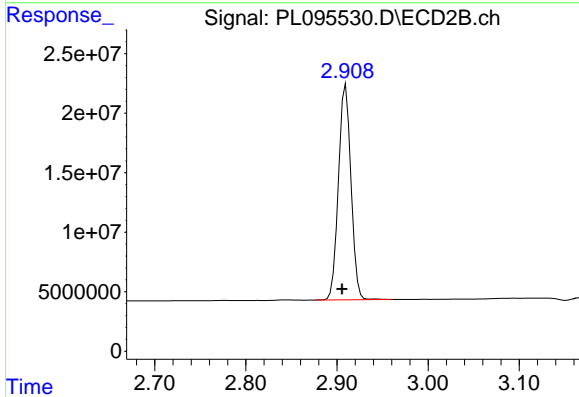




#1 Tetrachloro-m-xylene

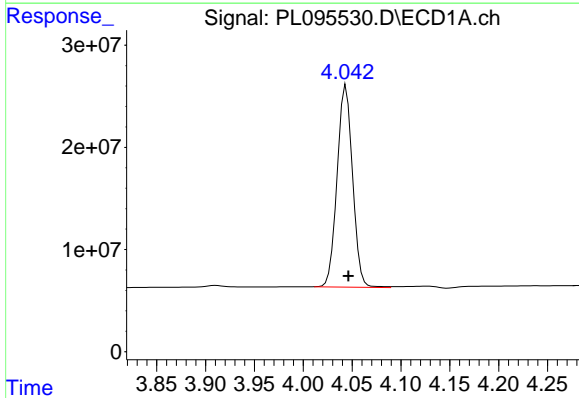
R.T.: 3.593 min
 Delta R.T.: -0.002 min
 Response: 140646200
 Conc: 43.08 ng/ml

Instrument :
 ECD_L
 ClientSampleId :
 PSTDCCC050



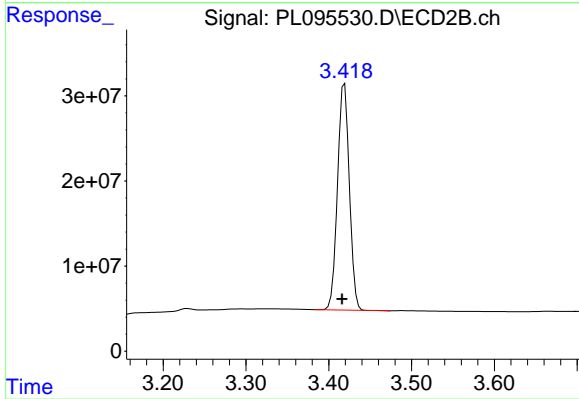
#1 Tetrachloro-m-xylene

R.T.: 2.910 min
 Delta R.T.: 0.004 min
 Response: 172494789
 Conc: 54.25 ng/ml



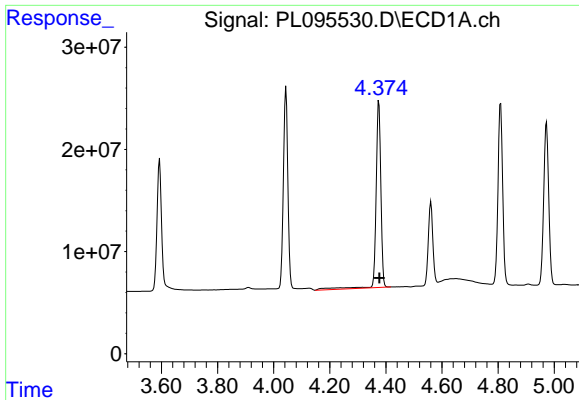
#2 alpha-BHC

R.T.: 4.044 min
 Delta R.T.: -0.002 min
 Response: 217899312
 Conc: 43.99 ng/ml



#2 alpha-BHC

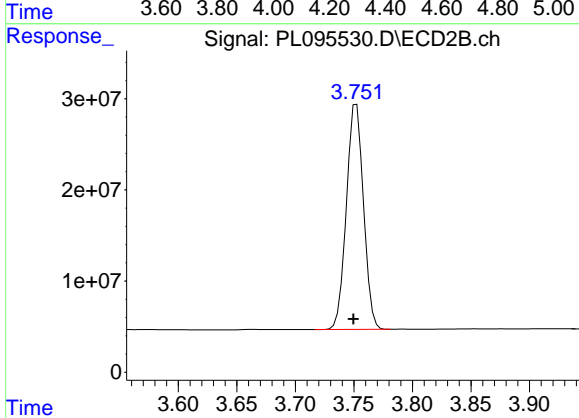
R.T.: 3.419 min
 Delta R.T.: 0.003 min
 Response: 264702098
 Conc: 59.50 ng/ml



#3 gamma-BHC (Lindane)

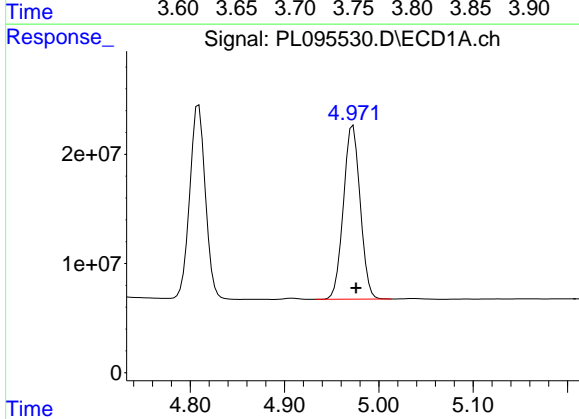
R.T.: 4.375 min
 Delta R.T.: -0.002 min
 Response: 219786703
 Conc: 46.43 ng/ml

Instrument :
 ECD_L
 ClientSampleId :
 PSTDCCC050



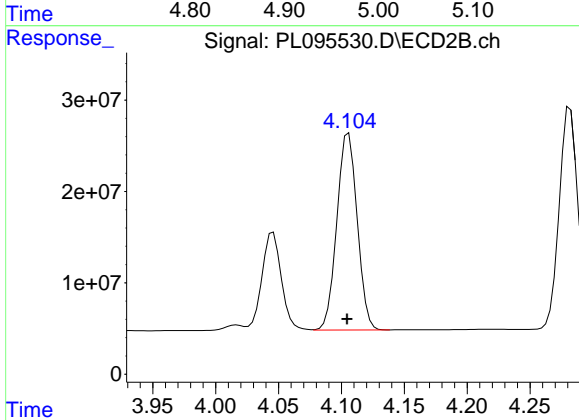
#3 gamma-BHC (Lindane)

R.T.: 3.752 min
 Delta R.T.: 0.002 min
 Response: 251257903
 Conc: 57.13 ng/ml



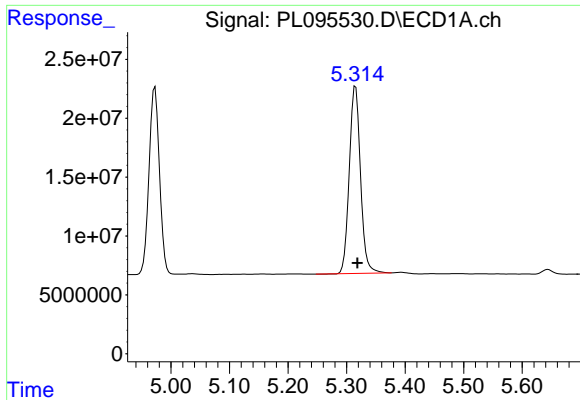
#4 Heptachlor

R.T.: 4.973 min
 Delta R.T.: -0.003 min
 Response: 196987634
 Conc: 43.06 ng/ml



#4 Heptachlor

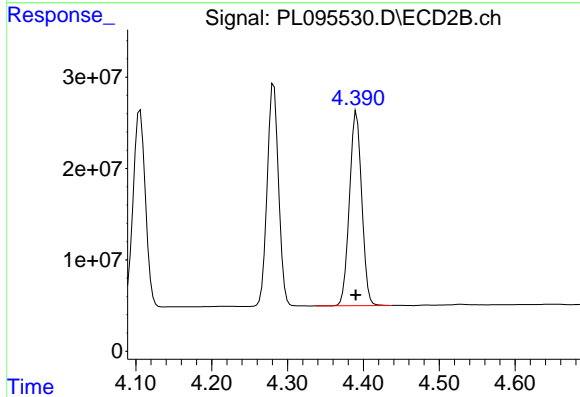
R.T.: 4.106 min
 Delta R.T.: 0.001 min
 Response: 242897344
 Conc: 55.75 ng/ml



#5 Aldrin

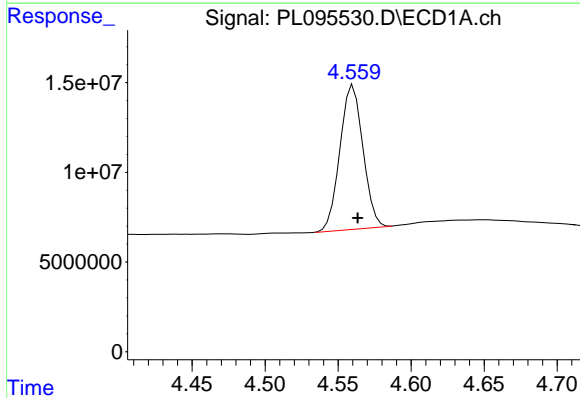
R.T.: 5.315 min
 Delta R.T.: -0.003 min
 Response: 211901465
 Conc: 46.14 ng/ml

Instrument :
 ECD_L
 ClientSampleId :
 PSTDCCC050



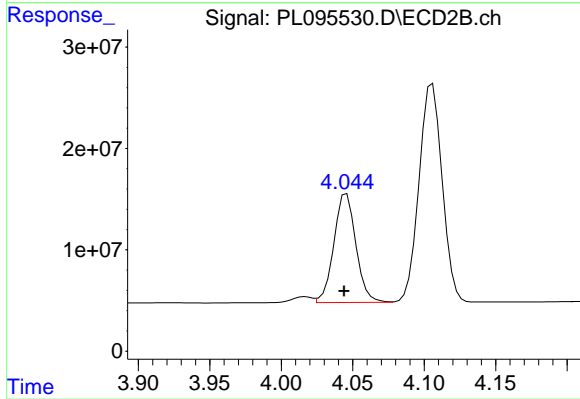
#5 Aldrin

R.T.: 4.391 min
 Delta R.T.: 0.000 min
 Response: 239546221
 Conc: 58.20 ng/ml



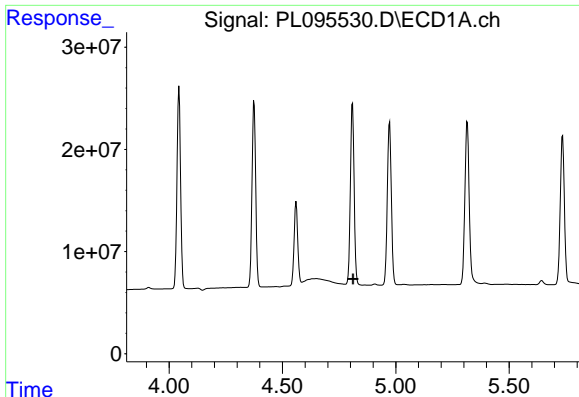
#6 beta-BHC

R.T.: 4.560 min
 Delta R.T.: -0.003 min
 Response: 88049620
 Conc: 42.59 ng/ml



#6 beta-BHC

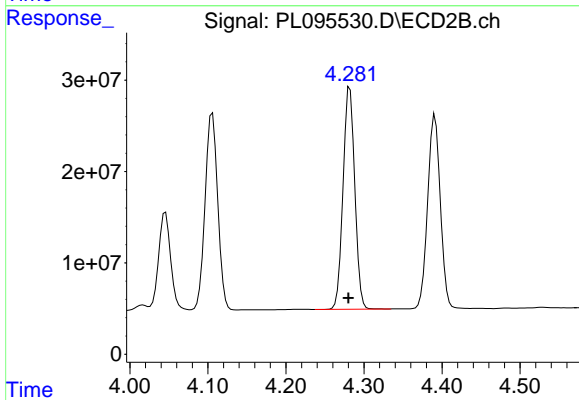
R.T.: 4.046 min
 Delta R.T.: 0.002 min
 Response: 115139438
 Conc: 55.47 ng/ml



#7 delta-BHC

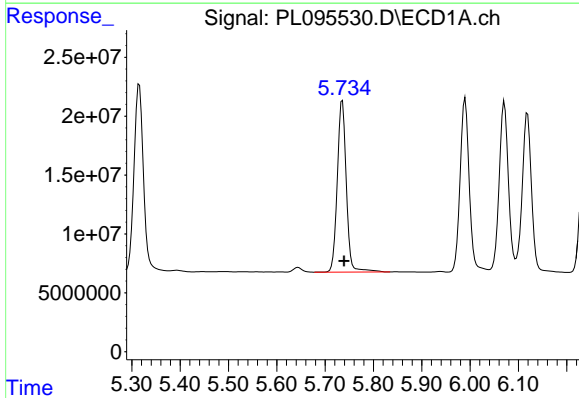
R.T.: 0.000 min
 Exp R.T.: 4.812 min
 Response: 0
 Conc: N.D.

Instrument :
 ECD_L
 ClientSampleId :
 PSTDCCC050



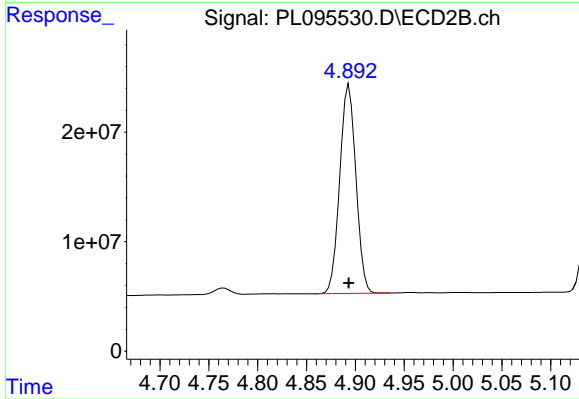
#7 delta-BHC

R.T.: 4.282 min
 Delta R.T.: 0.002 min
 Response: 253455297
 Conc: 57.84 ng/ml



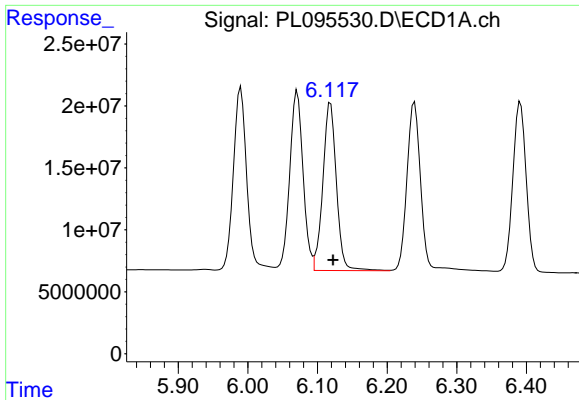
#8 Heptachlor epoxide

R.T.: 5.736 min
 Delta R.T.: -0.003 min
 Response: 190861209
 Conc: 47.65 ng/ml



#8 Heptachlor epoxide

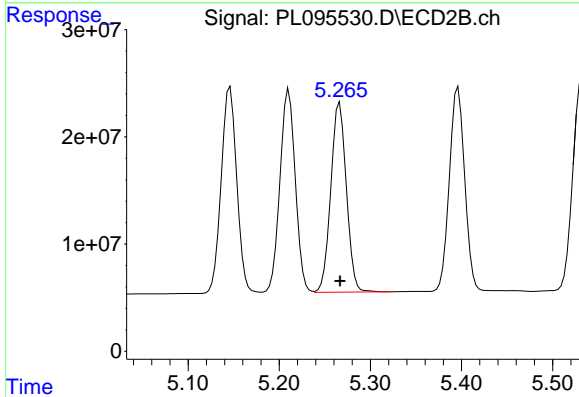
R.T.: 4.894 min
 Delta R.T.: 0.000 min
 Response: 219548420
 Conc: 56.84 ng/ml



#9 Endosulfan I

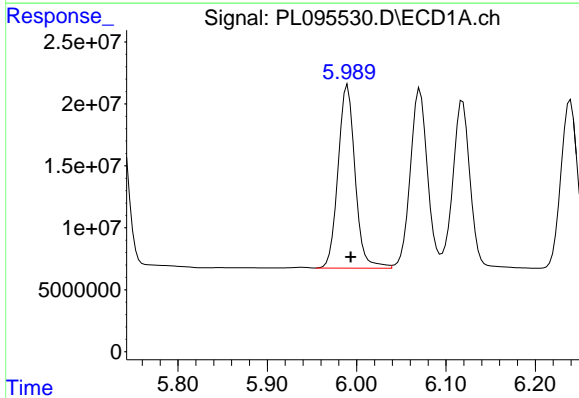
R.T.: 6.119 min
 Delta R.T.: -0.004 min
 Response: 183478787
 Conc: 48.32 ng/ml

Instrument :
 ECD_L
 ClientSampleId :
 PSTDCCC050



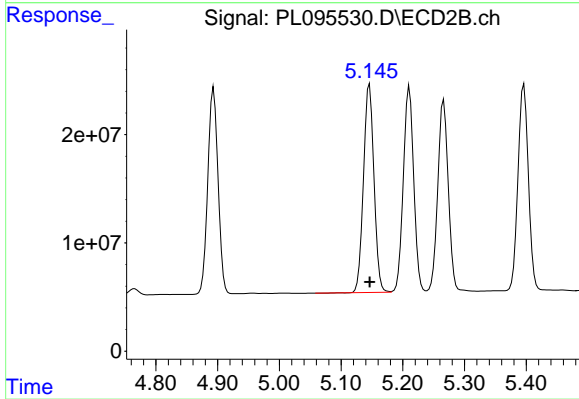
#9 Endosulfan I

R.T.: 5.266 min
 Delta R.T.: 0.000 min
 Response: 210181067
 Conc: 57.42 ng/ml



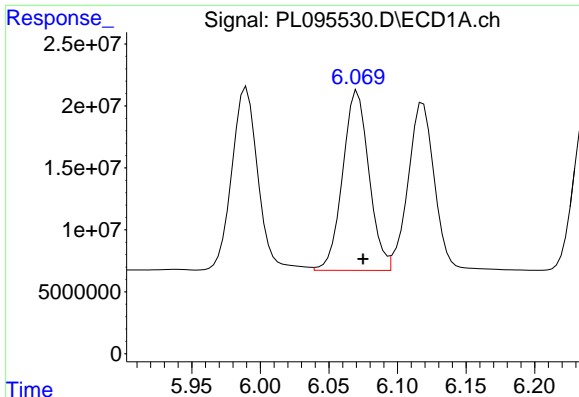
#10 gamma-Chlordane

R.T.: 5.990 min
 Delta R.T.: -0.004 min
 Response: 195898751
 Conc: 48.02 ng/ml



#10 gamma-Chlordane

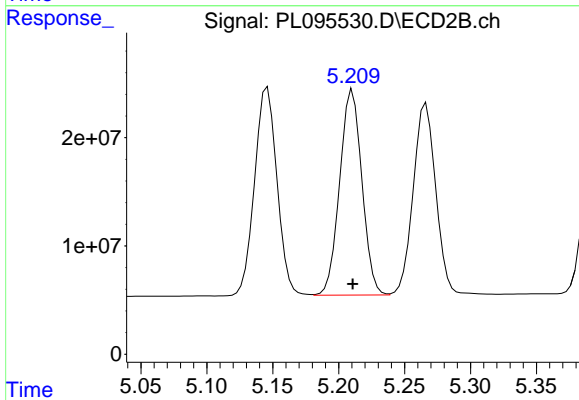
R.T.: 5.146 min
 Delta R.T.: 0.000 min
 Response: 227873977
 Conc: 56.23 ng/ml



#11 alpha-Chlordane

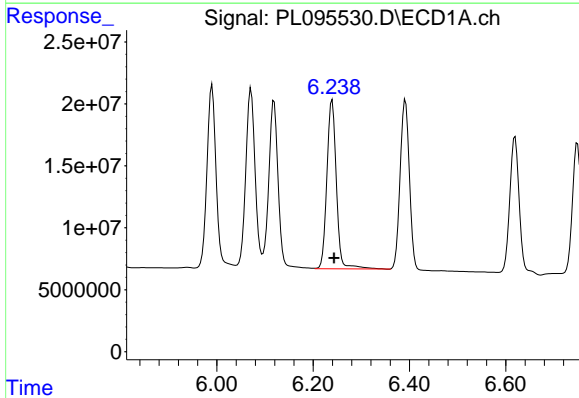
R.T.: 6.071 min
 Delta R.T.: -0.004 min
 Response: 193710998
 Conc: 47.64 ng/ml

Instrument :
 ECD_L
 ClientSampleId :
 PSTDCCC050



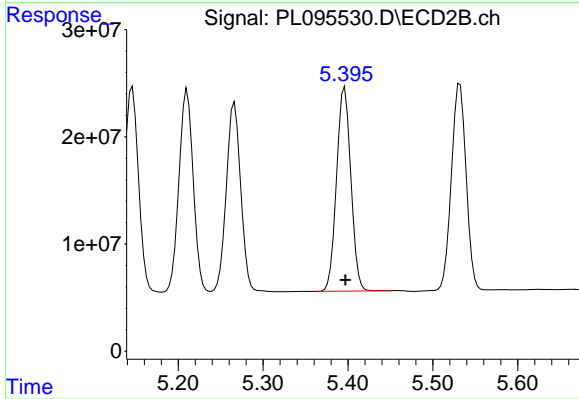
#11 alpha-Chlordane

R.T.: 5.211 min
 Delta R.T.: 0.000 min
 Response: 222394113
 Conc: 55.86 ng/ml



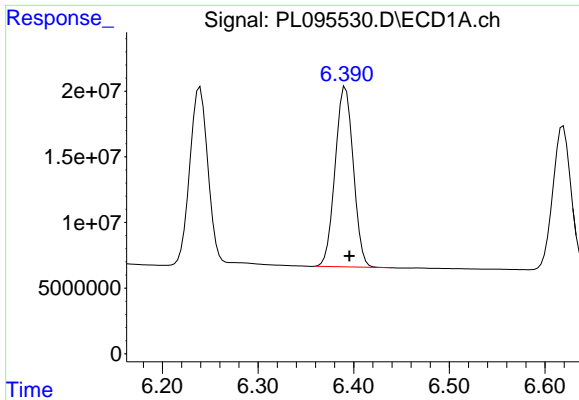
#12 4,4'-DDE

R.T.: 6.239 min
 Delta R.T.: -0.004 min
 Response: 187061781
 Conc: 47.71 ng/ml



#12 4,4'-DDE

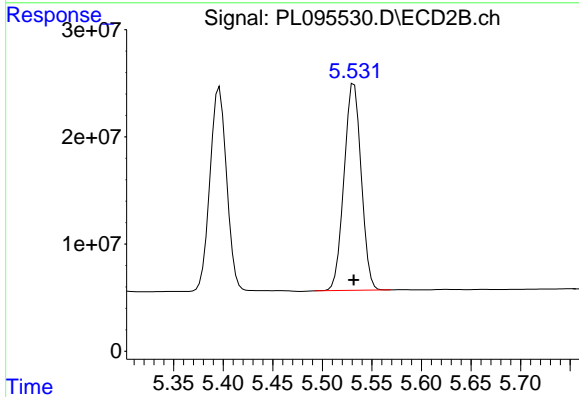
R.T.: 5.396 min
 Delta R.T.: 0.000 min
 Response: 222789853
 Conc: 54.78 ng/ml



#13 Dieldrin

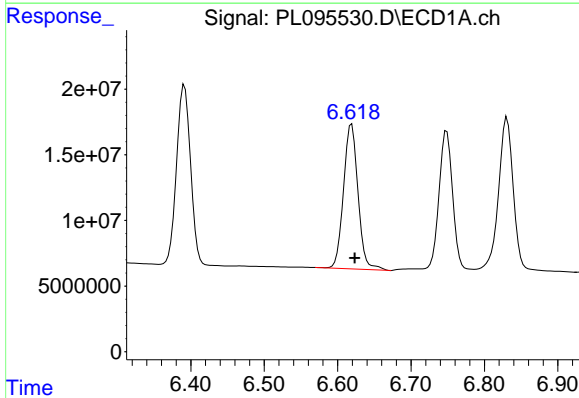
R.T.: 6.391 min
 Delta R.T.: -0.004 min
 Response: 181082966
 Conc: 46.98 ng/ml

Instrument :
 ECD_L
 ClientSampleId :
 PSTDCCC050



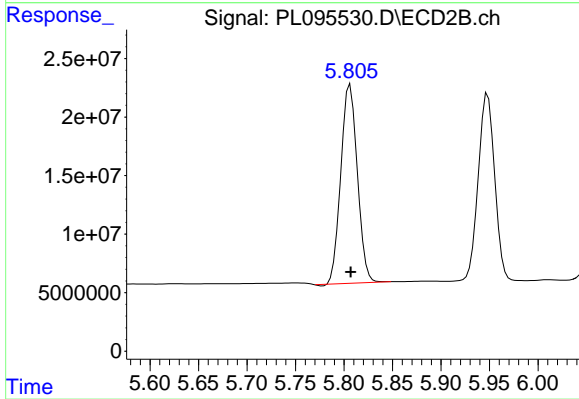
#13 Dieldrin

R.T.: 5.532 min
 Delta R.T.: 0.000 min
 Response: 232814494
 Conc: 57.24 ng/ml



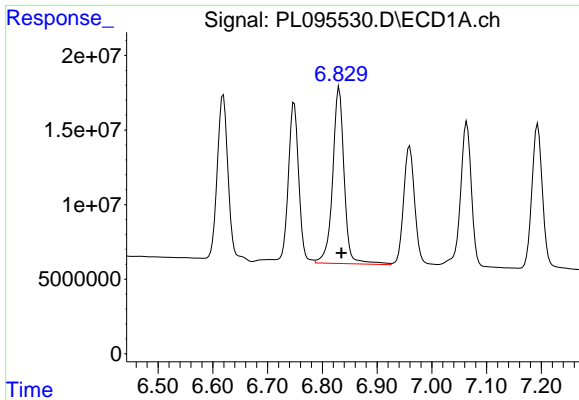
#14 Endrin

R.T.: 6.619 min
 Delta R.T.: -0.004 min
 Response: 151831115
 Conc: 47.67 ng/ml



#14 Endrin

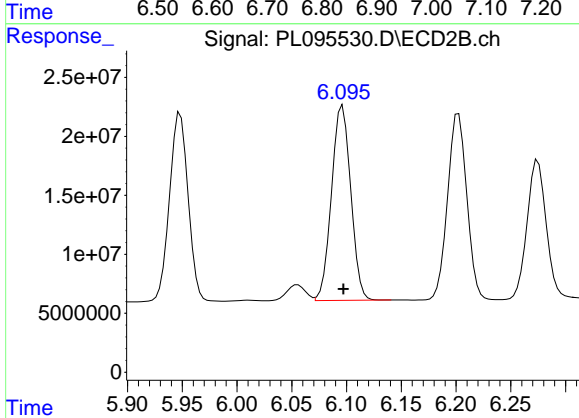
R.T.: 5.806 min
 Delta R.T.: 0.000 min
 Response: 200816364
 Conc: 55.16 ng/ml



#15 Endosulfan II

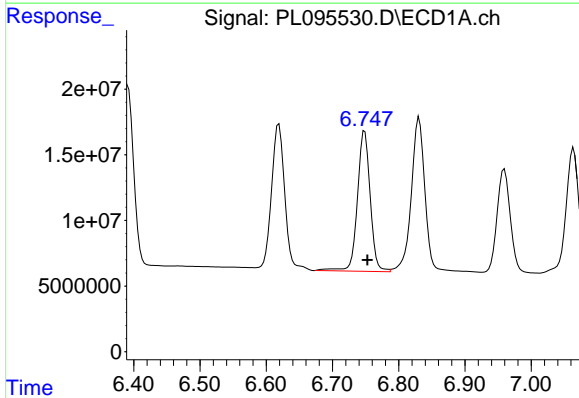
R.T.: 6.831 min
 Delta R.T.: -0.004 min
 Response: 173136197
 Conc: 54.24 ng/ml

Instrument :
 ECD_L
 ClientSampleId :
 PSTDCCC050



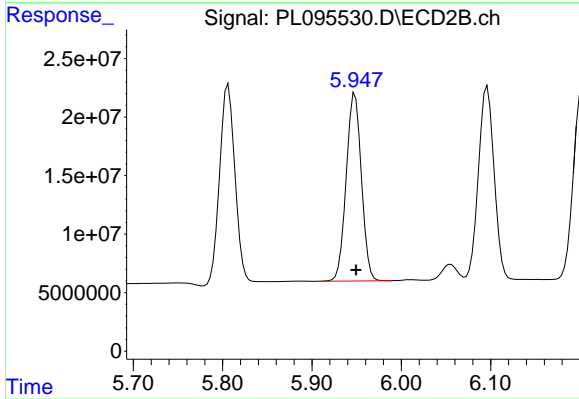
#15 Endosulfan II

R.T.: 6.096 min
 Delta R.T.: 0.000 min
 Response: 202092007
 Conc: 56.28 ng/ml



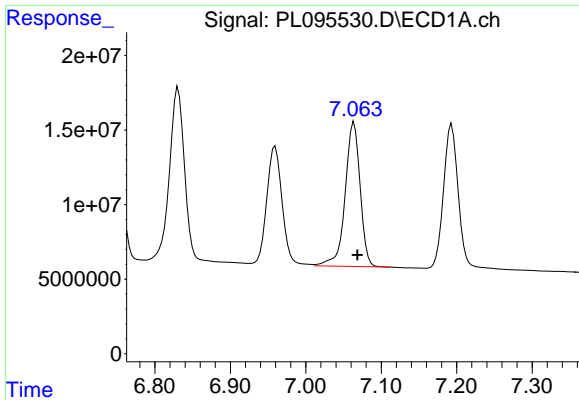
#16 4,4'-DDD

R.T.: 6.749 min
 Delta R.T.: -0.004 min
 Response: 144089628
 Conc: 50.90 ng/ml



#16 4,4'-DDD

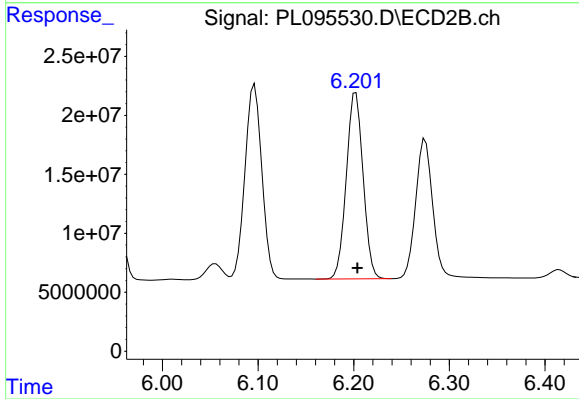
R.T.: 5.948 min
 Delta R.T.: -0.001 min
 Response: 189401761
 Conc: 57.98 ng/ml



#17 4,4'-DDT

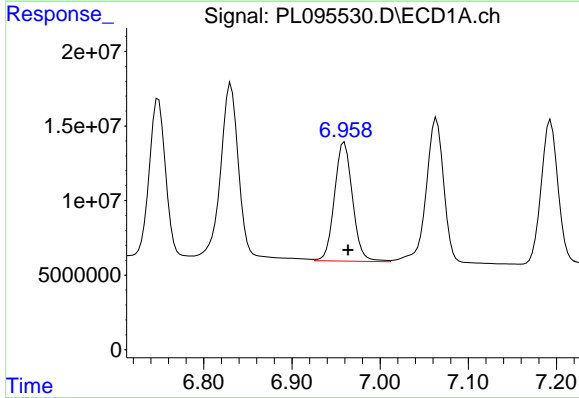
R.T.: 7.064 min
 Delta R.T.: -0.005 min
 Response: 133368521
 Conc: 46.82 ng/ml

Instrument :
 ECD_L
 ClientSampleId :
 PSTDCCC050



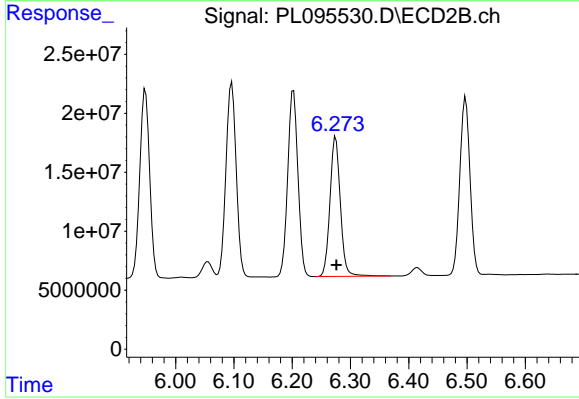
#17 4,4'-DDT

R.T.: 6.202 min
 Delta R.T.: -0.001 min
 Response: 193221103
 Conc: 56.23 ng/ml



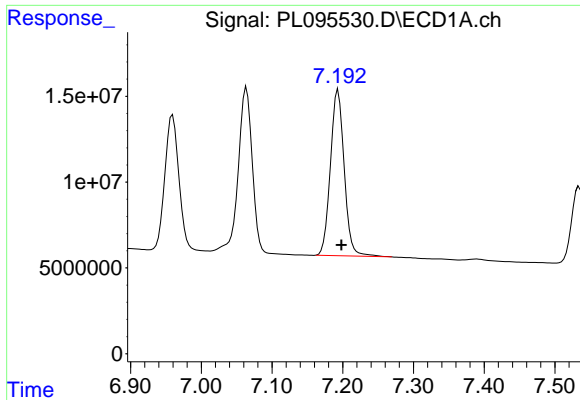
#18 Endrin aldehyde

R.T.: 6.960 min
 Delta R.T.: -0.004 min
 Response: 113372571
 Conc: 48.85 ng/ml



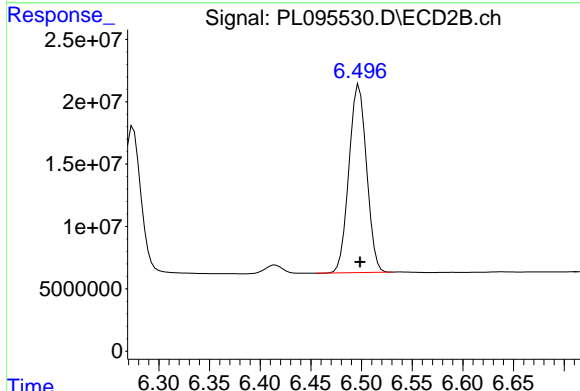
#18 Endrin aldehyde

R.T.: 6.275 min
 Delta R.T.: 0.000 min
 Response: 146594822
 Conc: 56.10 ng/ml

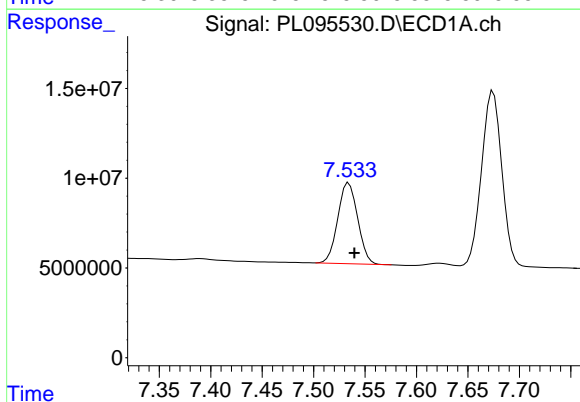


#19 Endosulfan Sulfate
 R.T.: 7.193 min
 Delta R.T.: -0.005 min
 Response: 130811428
 Conc: 46.69 ng/ml

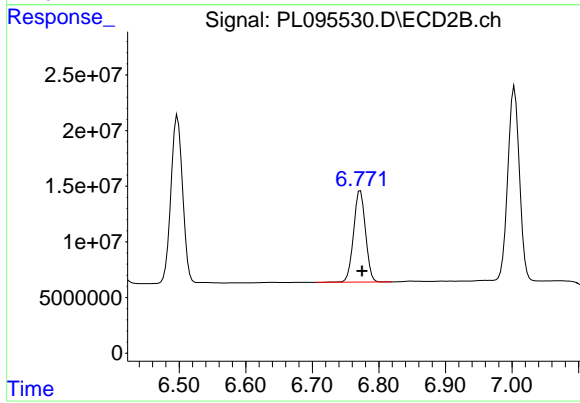
Instrument :
 ECD_L
 ClientSampleId :
 PSTDCCC050



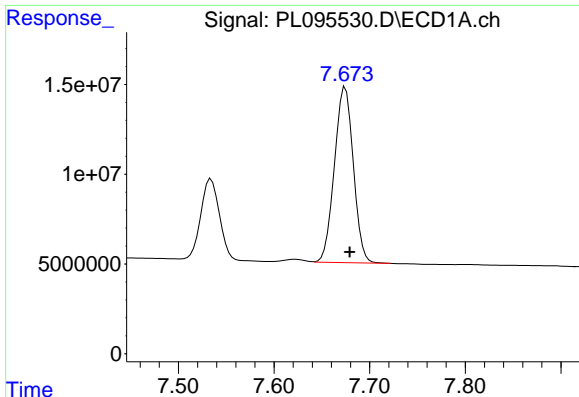
#19 Endosulfan Sulfate
 R.T.: 6.498 min
 Delta R.T.: 0.000 min
 Response: 182329631
 Conc: 54.95 ng/ml



#20 Methoxychlor
 R.T.: 7.534 min
 Delta R.T.: -0.005 min
 Response: 60523196
 Conc: 43.38 ng/ml



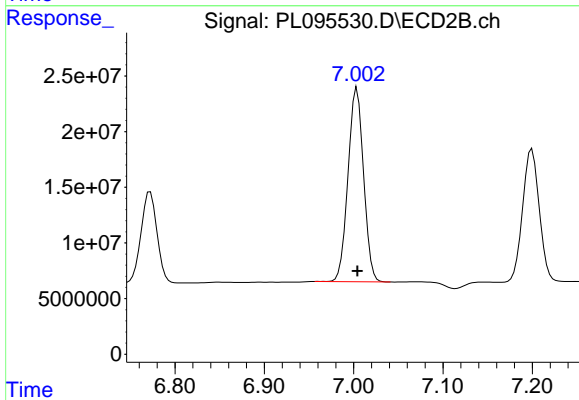
#20 Methoxychlor
 R.T.: 6.772 min
 Delta R.T.: -0.003 min
 Response: 102205968
 Conc: 53.58 ng/ml



#21 Endrin ketone

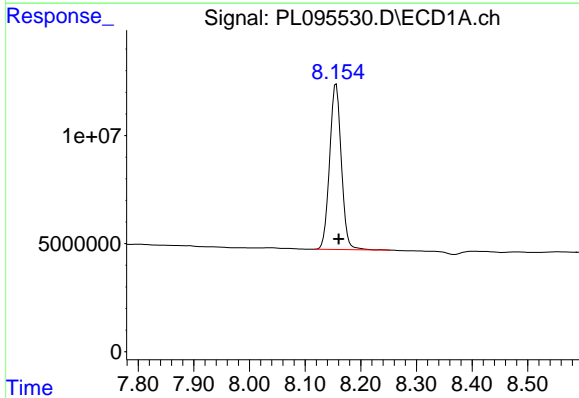
R.T.: 7.675 min
 Delta R.T.: -0.005 min
 Response: 134333902
 Conc: 47.12 ng/ml

Instrument :
 ECD_L
 ClientSampleId :
 PSTDCCC050



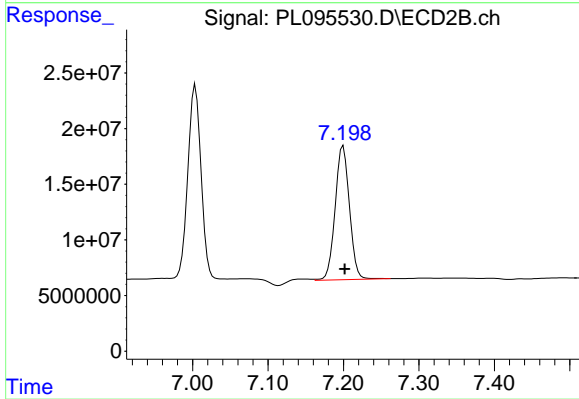
#21 Endrin ketone

R.T.: 7.004 min
 Delta R.T.: 0.000 min
 Response: 210726320
 Conc: 59.84 ng/ml



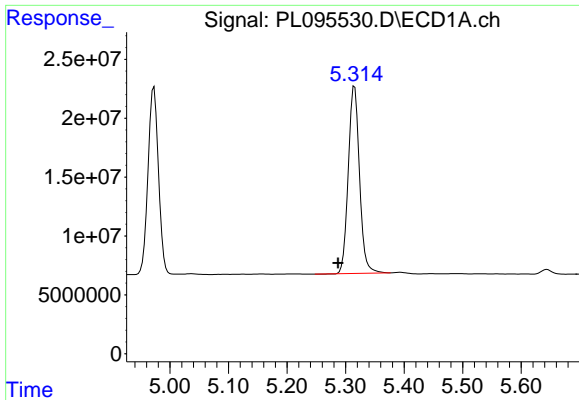
#22 Mirex

R.T.: 8.156 min
 Delta R.T.: -0.005 min
 Response: 111853445
 Conc: 47.08 ng/ml



#22 Mirex

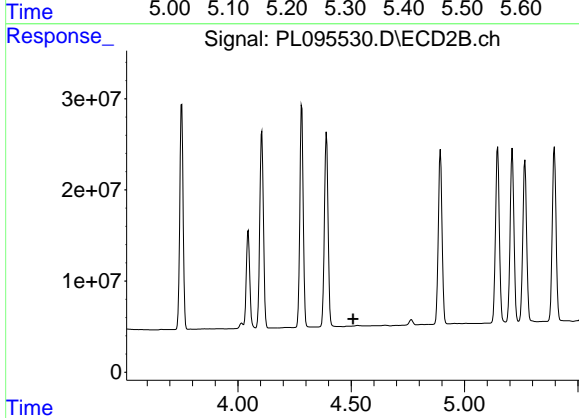
R.T.: 7.200 min
 Delta R.T.: -0.002 min
 Response: 158663826
 Conc: 55.05 ng/ml



#24 Chlordane-2

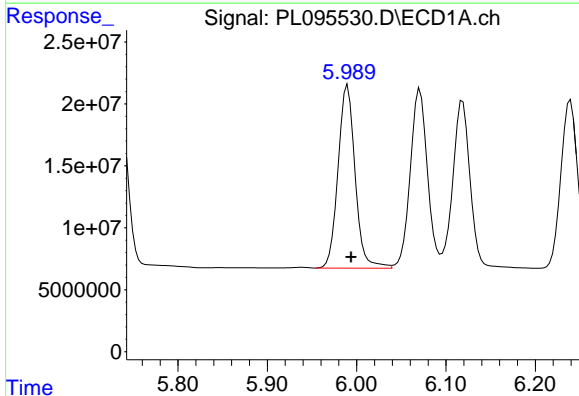
R.T.: 5.315 min
 Delta R.T.: 0.028 min
 Response: 211901465
 Conc: 1000.88 ng/m

Instrument :
 ECD_L
 ClientSampleId :
 PSTDCCC050



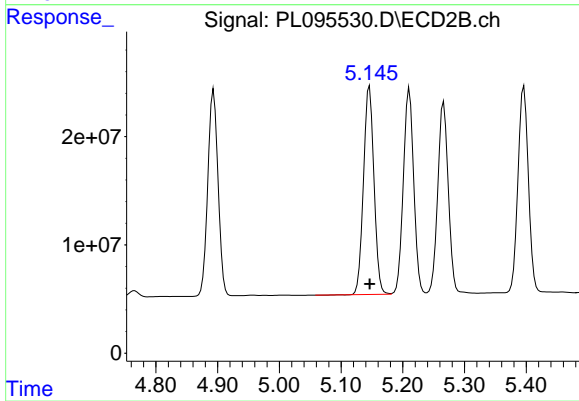
#24 Chlordane-2

R.T.: 0.000 min
 Exp R.T. : 4.508 min
 Response: 0
 Conc: N.D.



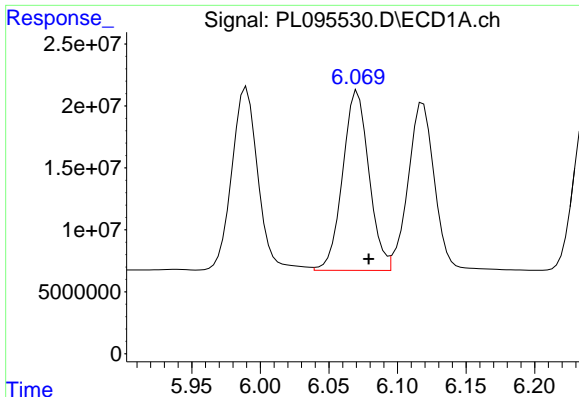
#25 Chlordane-3

R.T.: 5.990 min
 Delta R.T.: -0.004 min
 Response: 195898751
 Conc: 251.50 ng/ml



#25 Chlordane-3

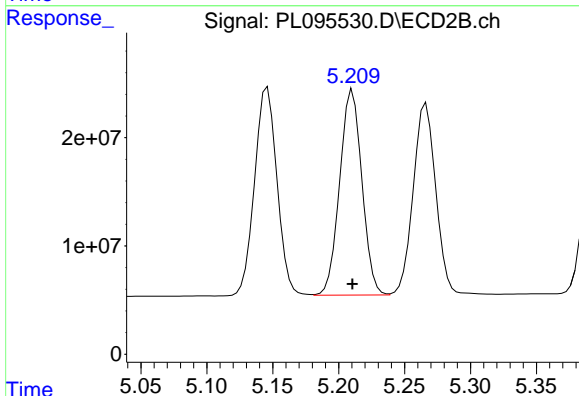
R.T.: 5.146 min
 Delta R.T.: 0.000 min
 Response: 227873977
 Conc: 441.08 ng/ml



#26 Chlordane-4

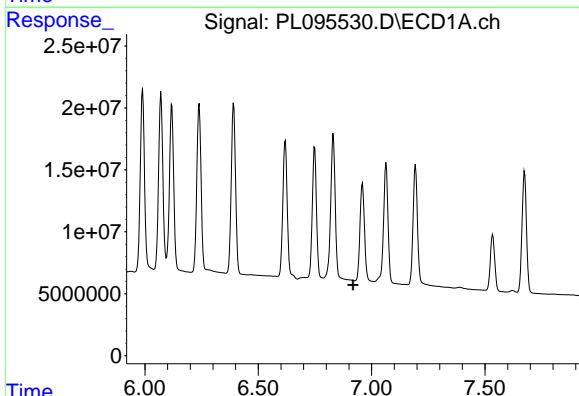
R.T.: 6.071 min
 Delta R.T.: -0.008 min
 Response: 193710998
 Conc: 205.44 ng/ml

Instrument :
 ECD_L
 ClientSampleId :
 PSTDCCC050



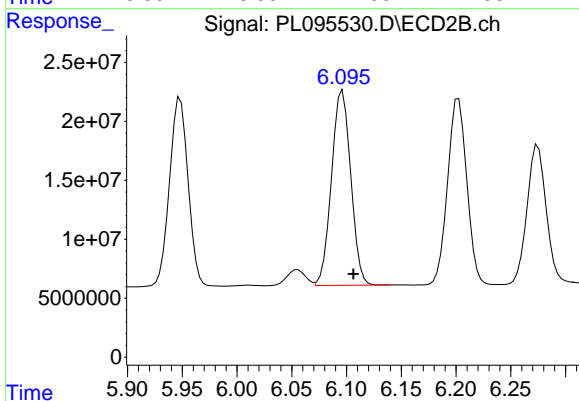
#26 Chlordane-4

R.T.: 5.211 min
 Delta R.T.: 0.000 min
 Response: 222394113
 Conc: 511.71 ng/ml



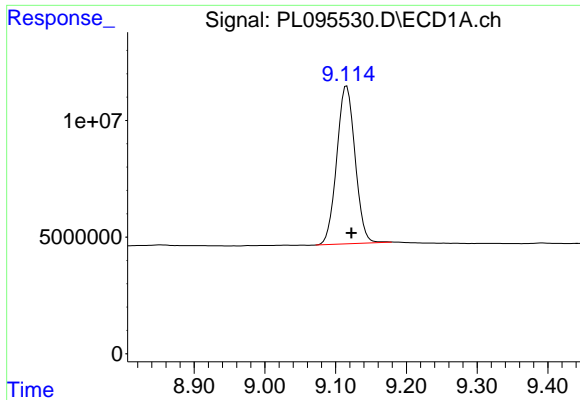
#27 Chlordane-5

R.T.: 0.000 min
 Exp R.T. : 6.919 min
 Response: 0
 Conc: N.D.



#27 Chlordane-5

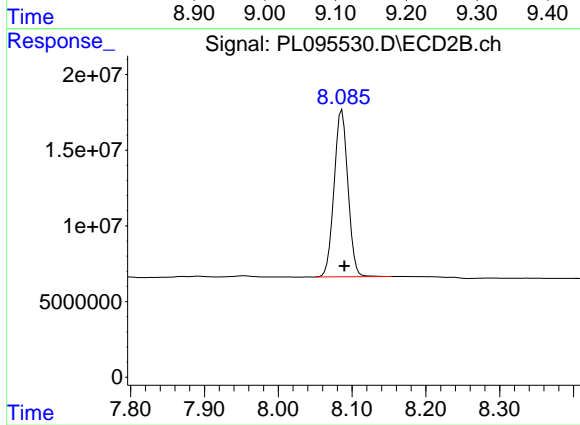
R.T.: 6.096 min
 Delta R.T.: -0.010 min
 Response: 202092007
 Conc: 1093.93 ng/ml



#28 Decachlorobiphenyl

R.T.: 9.116 min
Delta R.T.: -0.007 min
Response: 121657534
Conc: 43.91 ng/ml

Instrument :
ECD_L
ClientSampleId :
PSTDCCC050



#28 Decachlorobiphenyl

R.T.: 8.086 min
Delta R.T.: -0.003 min
Response: 144107963
Conc: 48.70 ng/ml