

Data Path : Z:\pestpcbsrv\HPCHEM1\ECD_L\Data\PL050625\
 Data File : PL095545.D
 Signal(s) : Signal #1: ECD1A.ch Signal #2: ECD2B.ch
 Acq On : 05 May 2025 16:56
 Operator : AR\AJ
 Sample : I.BLK
 Misc :
 ALS Vial : 2 Sample Multiplier: 1

Instrument :
 ECD_L
 ClientSampleId :
 I.BLK

Integration File signal 1: autoint1.e
 Integration File signal 2: autoint2.e
 Quant Time: May 06 01:42:17 2025
 Quant Method : Z:\pestpcbsrv\HPCHEM1\ECD_L\methods\PL042325.M
 Quant Title : GC Extractables
 QLast Update : Wed Apr 23 16:23:18 2025
 Response via : Initial Calibration
 Integrator: ChemStation

Volume Inj. : 1 µl
 Signal #1 Phase : ZB-MR1 Signal #2 Phase: ZB-MR2
 Signal #1 Info : 30M x 0.32mm x0.5 Signal #2 Info : 30M x 0.32mm x0.25µm

Compound	RT#1	RT#2	Resp#1	Resp#2	ng/ml	ng/ml
System Monitoring Compounds						
1) SA Tetrachlo...	3.593	2.909	52137265	66599824	15.970	20.945 #
28) SA Decachlor...	9.115	8.085	48059928	58290232	17.345	19.698
Target Compounds						
6) B beta-BHC	0.000	4.016f	0	4413706	N.D.	2.126 #

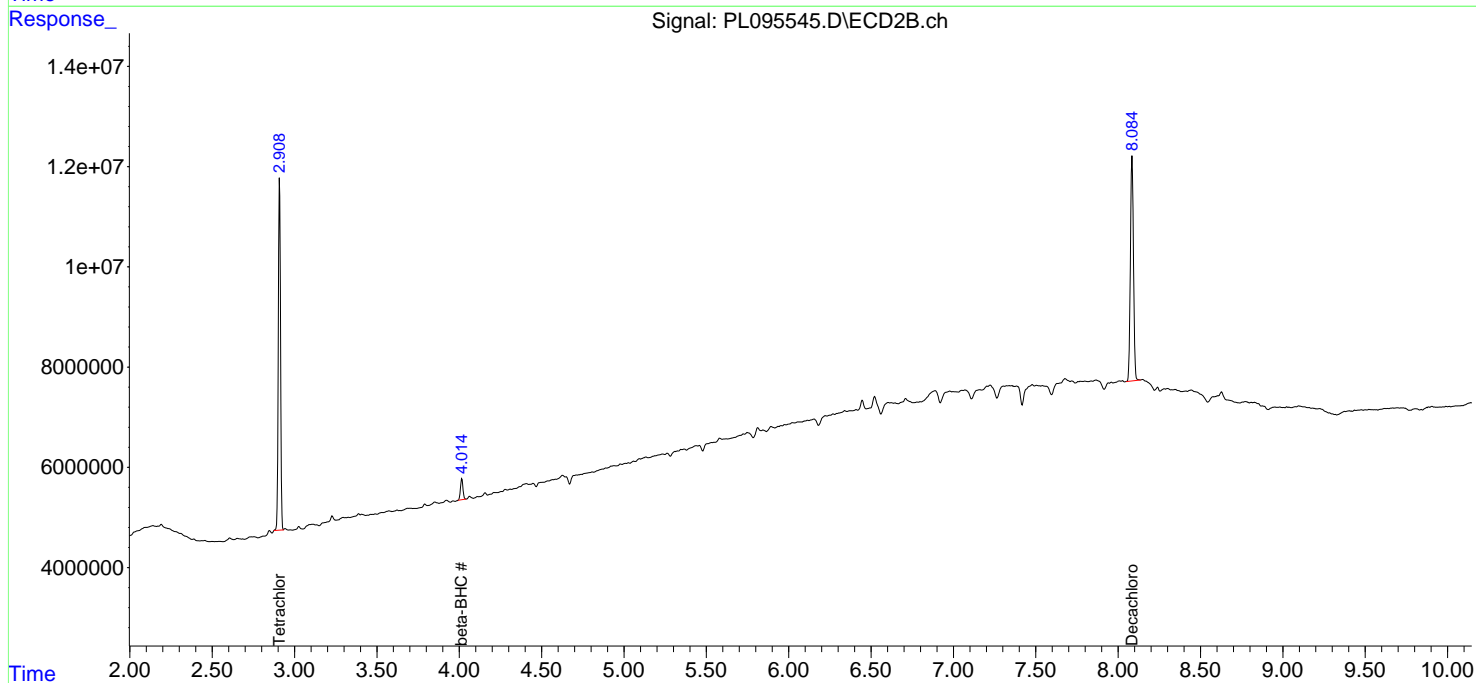
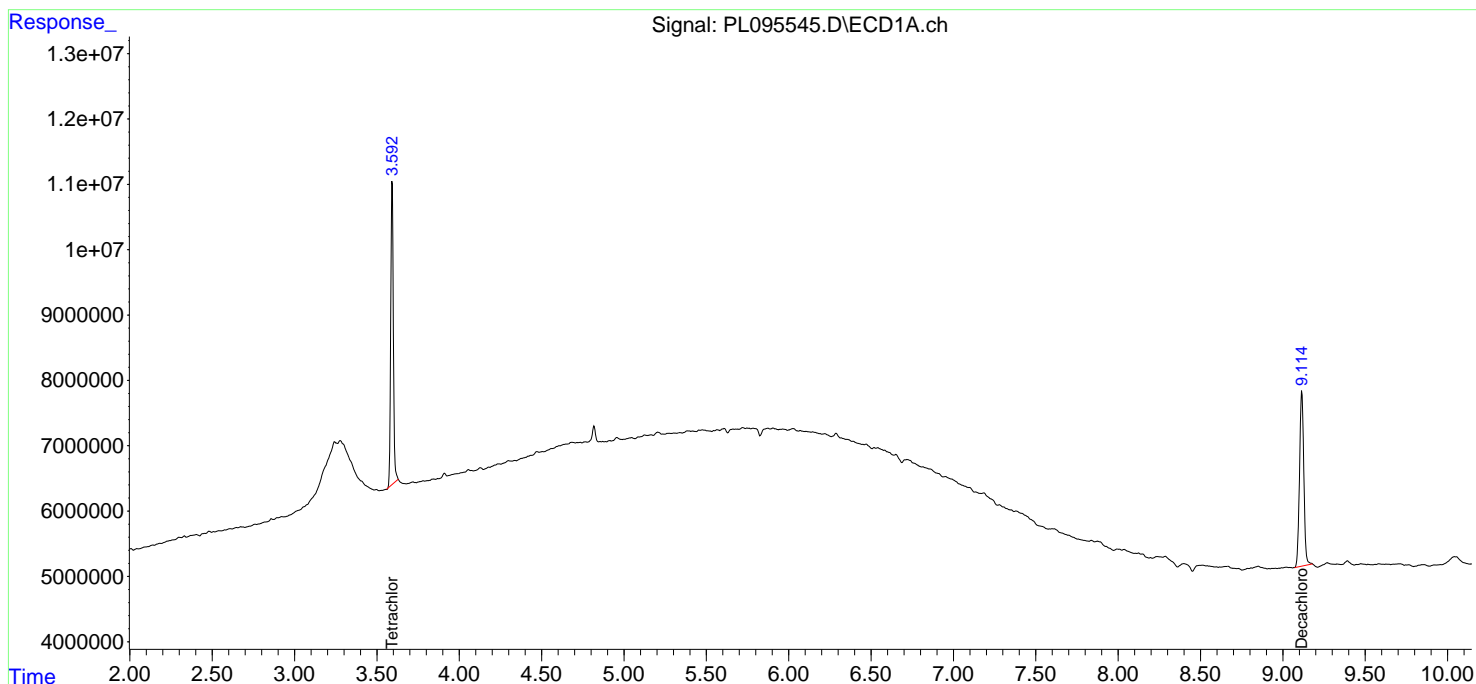
(f)=RT Delta > 1/2 Window (#)=Amounts differ by > 25% (m)=manual int.

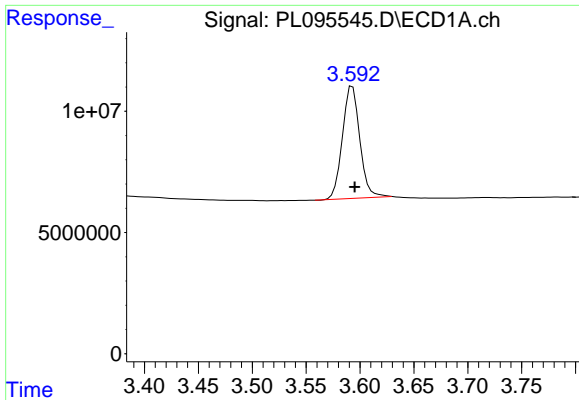
Data Path : Z:\pestpcbsrv\HPCHEM1\ECD_L\Data\PL050625\
 Data File : PL095545.D
 Signal(s) : Signal #1: ECD1A.ch Signal #2: ECD2B.ch
 Acq On : 05 May 2025 16:56
 Operator : AR\AJ
 Sample : I.BLK
 Misc :
 ALS Vial : 2 Sample Multiplier: 1

Instrument :
 ECD_L
 ClientSampleId :
 I.BLK

Integration File signal 1: autoint1.e
 Integration File signal 2: autoint2.e
 Quant Time: May 06 01:42:17 2025
 Quant Method : Z:\pestpcbsrv\HPCHEM1\ECD_L\methods\PL042325.M
 Quant Title : GC Extractables
 QLast Update : Wed Apr 23 16:23:18 2025
 Response via : Initial Calibration
 Integrator: ChemStation

Volume Inj. : 1 µl
 Signal #1 Phase : ZB-MR1 Signal #2 Phase: ZB-MR2
 Signal #1 Info : 30M x 0.32mm x0.5 Signal #2 Info : 30M x 0.32mm x0.25µm

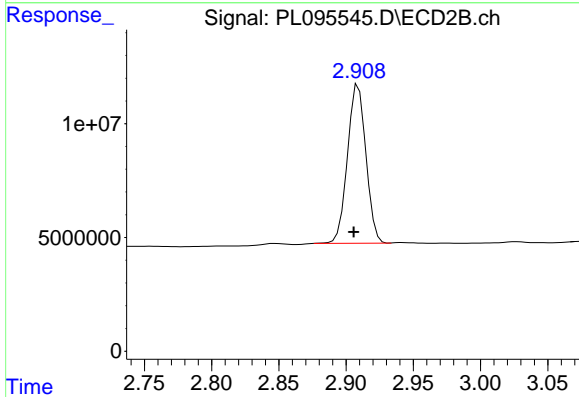




#1 Tetrachloro-m-xylene

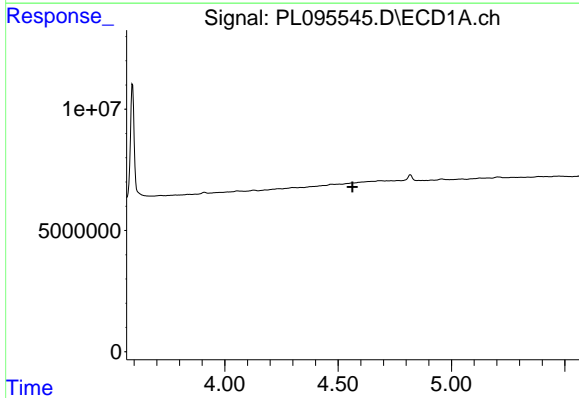
R.T.: 3.593 min
 Delta R.T.: -0.002 min
 Response: 52137265
 Conc: 15.97 ng/ml

Instrument :
 ECD_L
 ClientSampleId :
 I.BLK



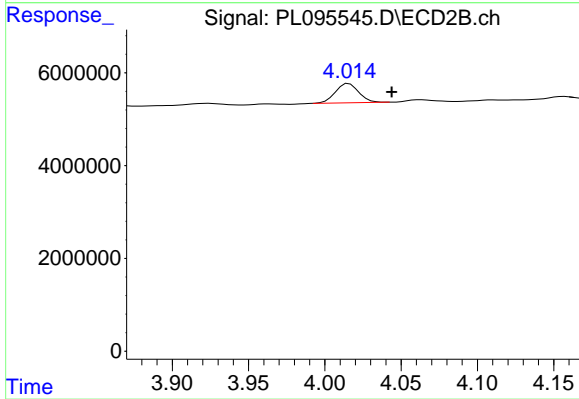
#1 Tetrachloro-m-xylene

R.T.: 2.909 min
 Delta R.T.: 0.004 min
 Response: 66599824
 Conc: 20.94 ng/ml



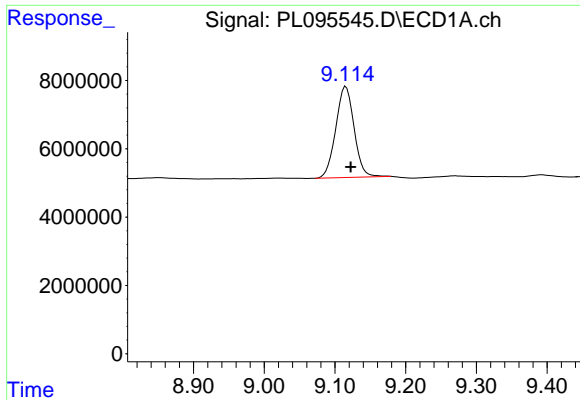
#6 beta-BHC

R.T.: 0.000 min
 Exp R.T. : 4.564 min
 Response: 0
 Conc: N.D.



#6 beta-BHC

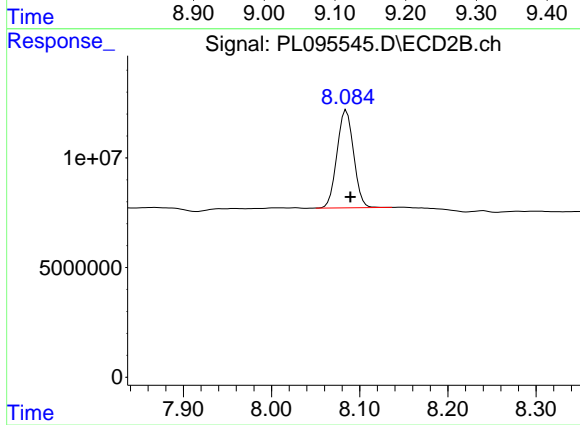
R.T.: 4.016 min
 Delta R.T.: -0.028 min
 Response: 4413706
 Conc: 2.13 ng/ml



#28 Decachlorobiphenyl

R.T.: 9.115 min
Delta R.T.: -0.007 min
Response: 48059928
Conc: 17.35 ng/ml

Instrument :
ECD_L
ClientSampleId :
I.BLK



#28 Decachlorobiphenyl

R.T.: 8.085 min
Delta R.T.: -0.005 min
Response: 58290232
Conc: 19.70 ng/ml