

Data Path : Z:\svoasrv\HPCHEM1\BNA_M\Data\BM050625\
 Data File : BM050120.D
 Acq On : 06 May 2025 15:20
 Operator : RC/JU
 Sample : Q1938-03
 Misc :
 ALS Vial : 10 Sample Multiplier: 1

Instrument :
 BNA_M
 ClientSampleId :
 LOWER-WALL-PILE-B

Quant Time: May 06 16:11:10 2025
 Quant Method : Z:\svoasrv\HPCHEM1\BNA_M\Methods\8270-BM042825.M
 Quant Title : ASP BNA STANDARDS FOR 5 POINT CALIBRATION
 QLast Update : Mon Apr 28 18:09:16 2025
 Response via : Initial Calibration

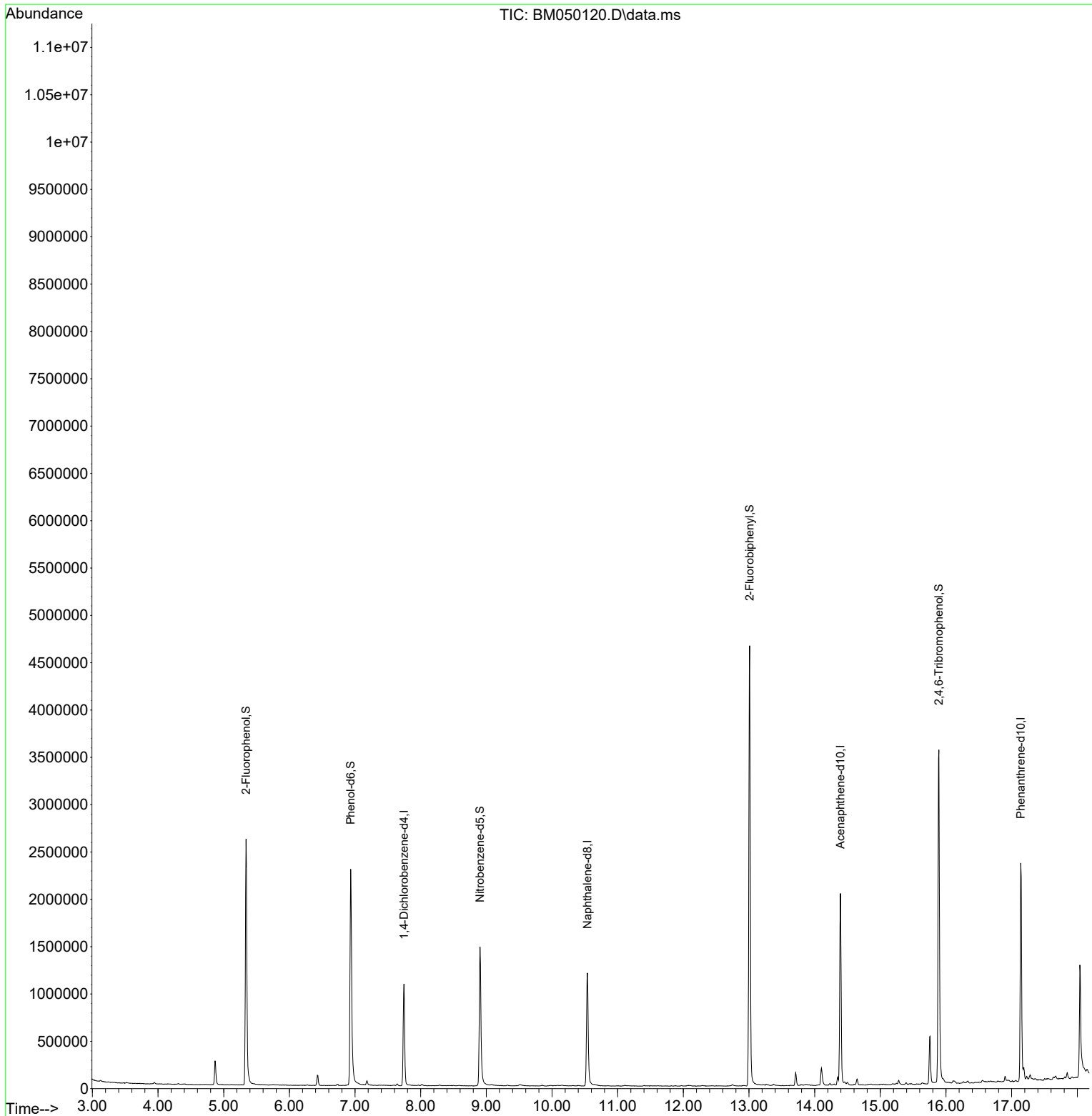
Compound	R.T.	QIon	Response	Conc	Units	Dev(Min)
Internal Standards						
1) 1,4-Dichlorobenzene-d4	7.746	152	313931	20.000	ng	-0.02
21) Naphthalene-d8	10.539	136	1147046	20.000	ng	-0.02
39) Acenaphthene-d10	14.392	164	769427	20.000	ng	-0.02
64) Phenanthrene-d10	17.139	188	1473166	20.000	ng	-0.02
76) Chrysene-d12	21.386	240	1291742	20.000	ng	-0.01
86) Perylene-d12	24.374	264	1325884	20.000	ng	-0.03
System Monitoring Compounds						
5) 2-Fluorophenol	5.340	112	1272945	71.004	ng	-0.02
7) Phenol-d6	6.934	99	1615896	71.712	ng	-0.02
23) Nitrobenzene-d5	8.904	82	976378	41.945	ng	-0.02
42) 2,4,6-Tribromophenol	15.892	330	806981	70.931	ng	-0.01
45) 2-Fluorobiphenyl	13.010	172	2722476	41.858	ng	-0.02
79) Terphenyl-d14	19.768	244	4203647	48.154	ng	-0.01
Target Compounds						
75) Fluoranthene	19.204	202	238848	2.448	ng	97
78) Pyrene	19.568	202	258217	2.847	ng	99
88) Benzo(b)fluoranthene	23.433	252	237651	2.756	ng	# 85
90) Benzo(a)pyrene	24.239	252	168717	2.089	ng	# 89

(#) = qualifier out of range (m) = manual integration (+) = signals summed

Data Path : Z:\svoasrv\HPCHEM1\BNA_M\Data\BM050625\
 Data File : BM050120.D
 Acq On : 06 May 2025 15:20
 Operator : RC/JU
 Sample : Q1938-03
 Misc :
 ALS Vial : 10 Sample Multiplier: 1

Instrument :
 BNA_M
 ClientSampleId :
 LOWER-WALL-PILE-B

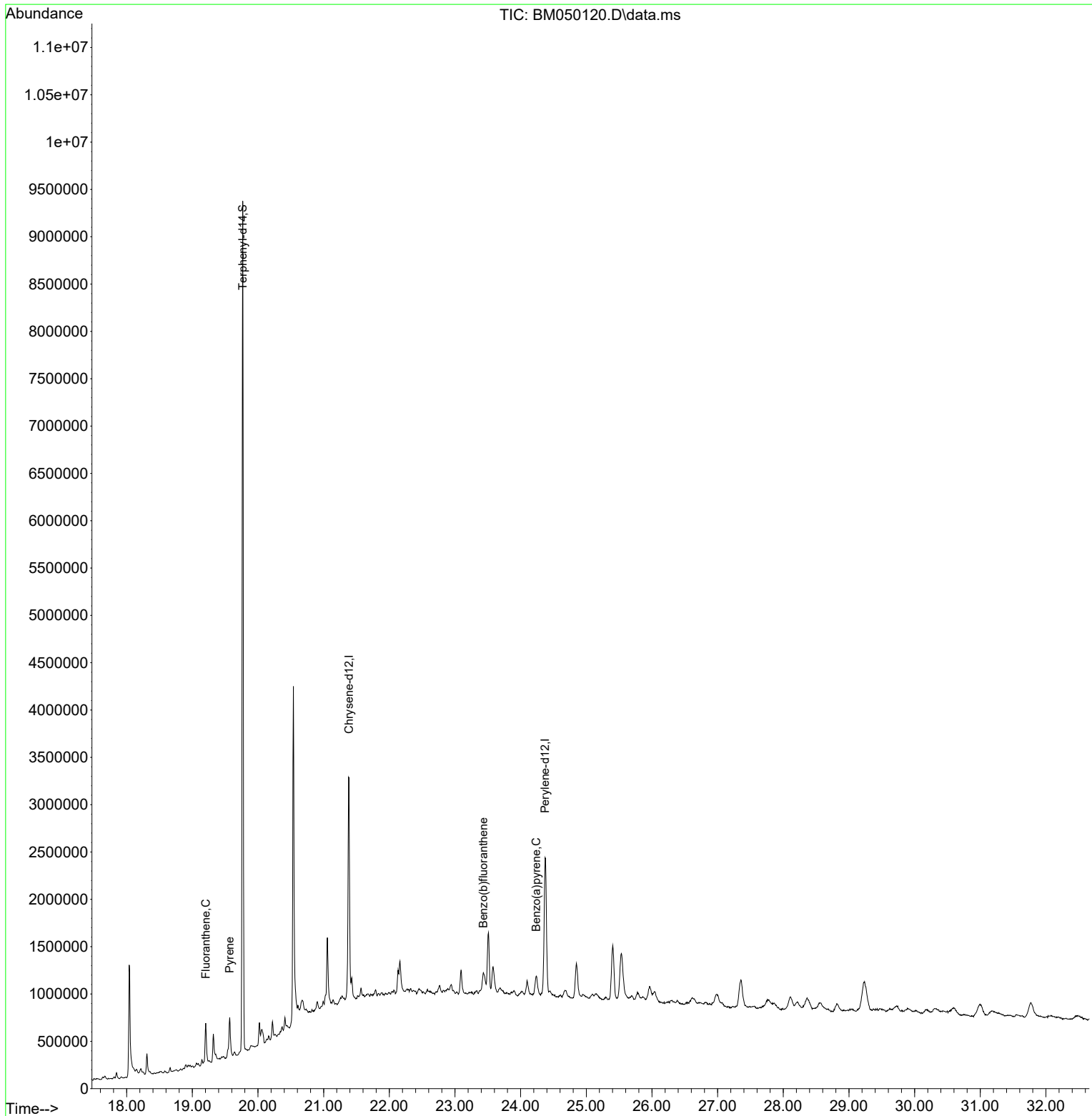
Quant Time: May 06 16:11:10 2025
 Quant Method : Z:\svoasrv\HPCHEM1\BNA_M\Methods\8270-BM042825.M
 Quant Title : ASP BNA STANDARDS FOR 5 POINT CALIBRATION
 QLast Update : Mon Apr 28 18:09:16 2025
 Response via : Initial Calibration

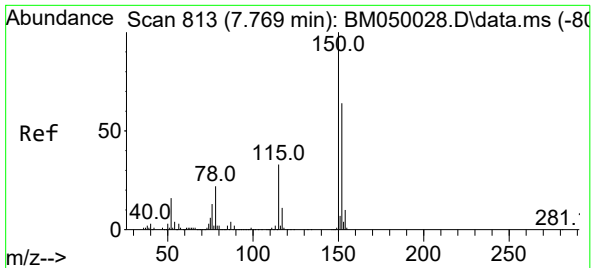


Data Path : Z:\svoasrv\HPCHEM1\BNA_M\Data\BM050625\
Data File : BM050120.D
Acq On : 06 May 2025 15:20
Operator : RC/JU
Sample : Q1938-03
Misc :
ALS Vial : 10 Sample Multiplier: 1

Instrument :
BNA_M
ClientSampleId :
LOWER-WALL-PILE-B

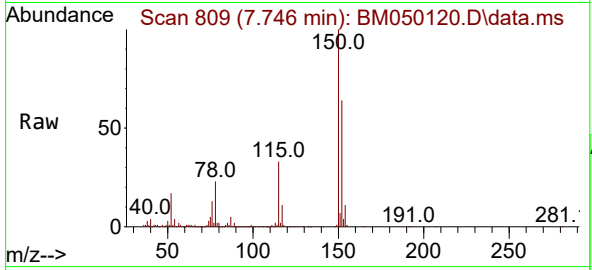
Quant Time: May 06 16:11:10 2025
Quant Method : Z:\svoasrv\HPCHEM1\BNA_M\Methods\8270-BM042825.M
Quant Title : ASP BNA STANDARDS FOR 5 POINT CALIBRATION
QLast Update : Mon Apr 28 18:09:16 2025
Response via : Initial Calibration



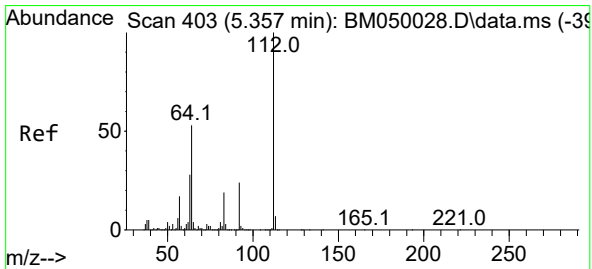
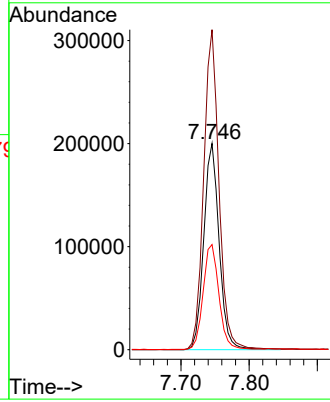
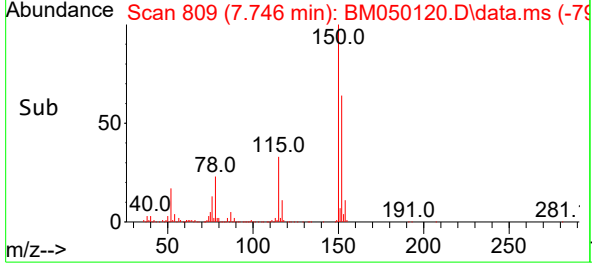


#1
 1,4-Dichlorobenzene-d4
 Concen: 20.000 ng
 RT: 7.746 min Scan# 809
 Delta R.T. -0.023 min
 Lab File: BM050120.D
 Acq: 06 May 2025 15:20

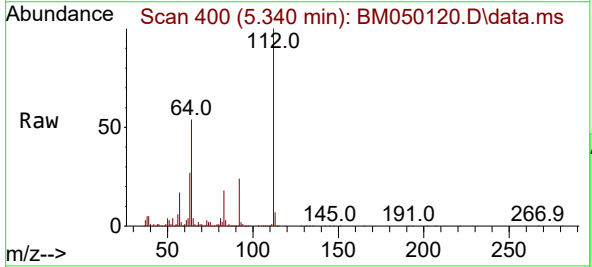
Instrument : BNA_M
 ClientSampleId : LOWER-WALL-PILE-B



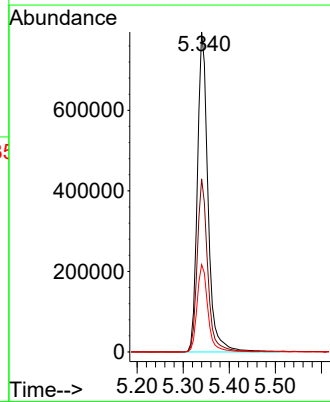
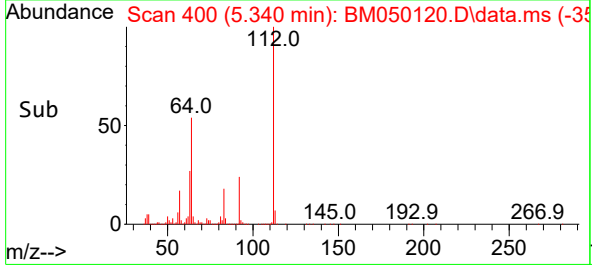
Tgt Ion:152 Resp: 313931
 Ion Ratio Lower Upper
 152 100
 150 155.2 124.1 186.1
 115 51.0 41.2 61.8

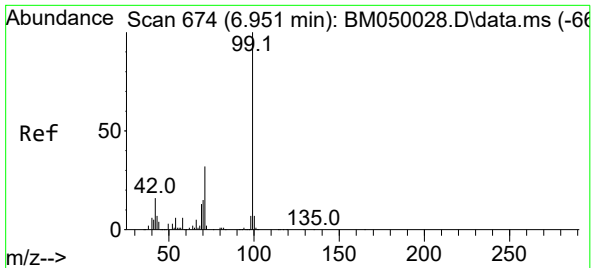


#5
 2-Fluorophenol
 Concen: 71.004 ng
 RT: 5.340 min Scan# 400
 Delta R.T. -0.018 min
 Lab File: BM050120.D
 Acq: 06 May 2025 15:20



Tgt Ion:112 Resp: 1272945
 Ion Ratio Lower Upper
 112 100
 64 54.1 42.6 64.0
 63 27.3 22.2 33.4



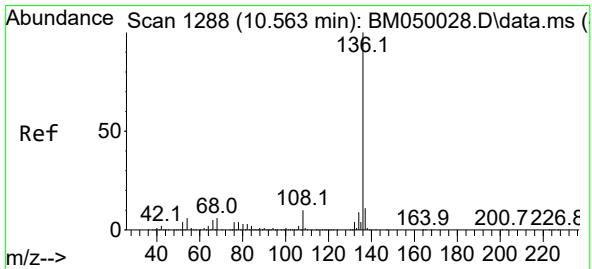
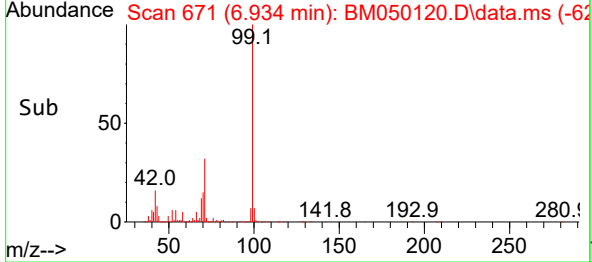
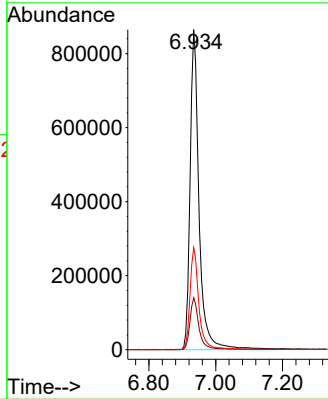
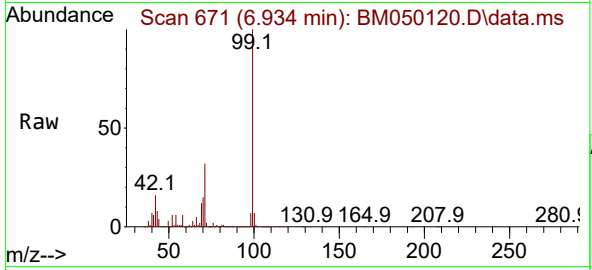


#7
 Phenol-d6
 Concen: 71.712 ng
 RT: 6.934 min Scan# 61
 Delta R.T. -0.018 min
 Lab File: BM050120.D
 Acq: 06 May 2025 15:20

Instrument :
 BNA_M
 ClientSampleId :
 LOWER-WALL-PILE-B

Tgt Ion: 99 Resp: 1615896

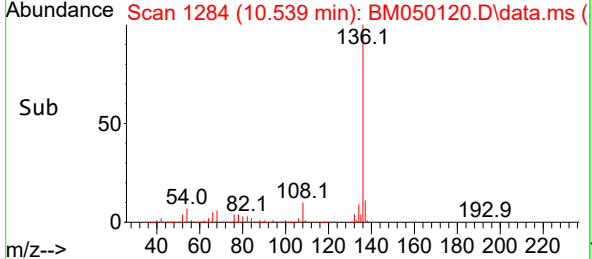
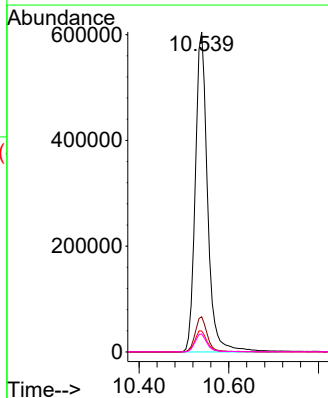
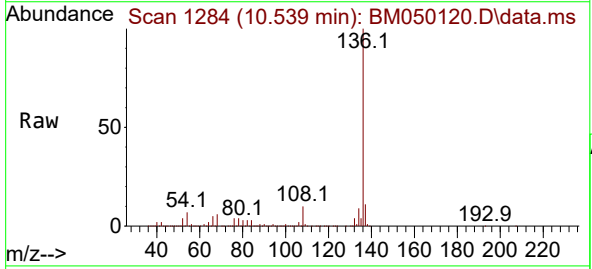
Ion	Ratio	Lower	Upper
99	100		
42	16.2	13.0	19.4
71	31.9	25.6	38.4

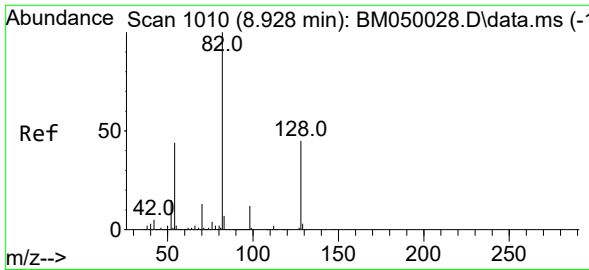


#21
 Naphthalene-d8
 Concen: 20.000 ng
 RT: 10.539 min Scan# 1284
 Delta R.T. -0.023 min
 Lab File: BM050120.D
 Acq: 06 May 2025 15:20

Tgt Ion: 136 Resp: 1147046

Ion	Ratio	Lower	Upper
136	100		
137	11.0	8.9	13.3
54	6.6	5.1	7.7
68	5.6	4.4	6.6

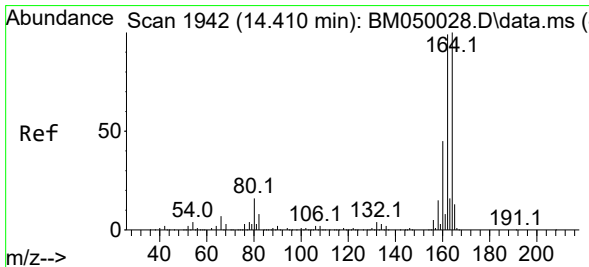
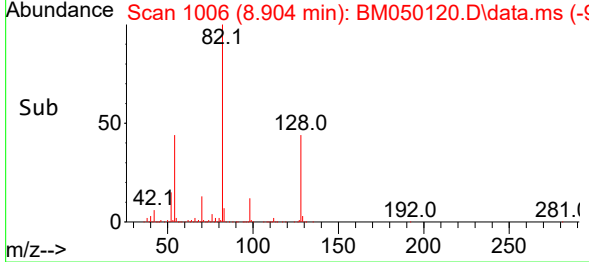
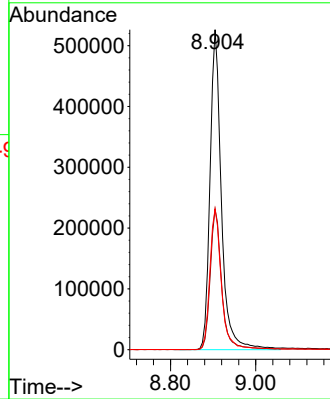
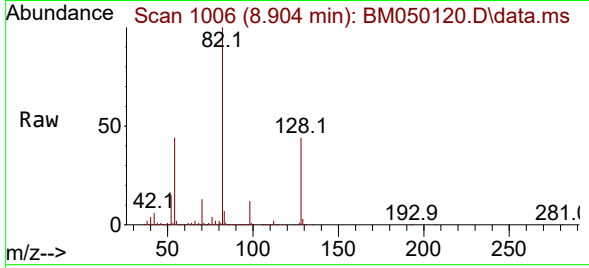




#23
 Nitrobenzene-d5
 Concen: 41.945 ng
 RT: 8.904 min Scan# 1010
 Delta R.T. -0.023 min
 Lab File: BM050120.D
 Acq: 06 May 2025 15:20

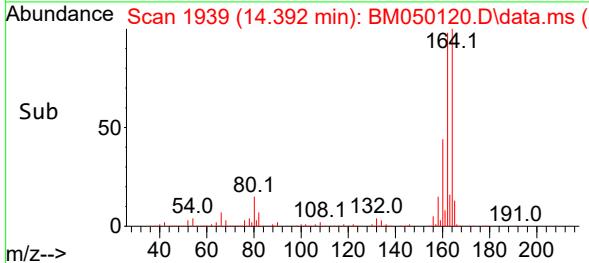
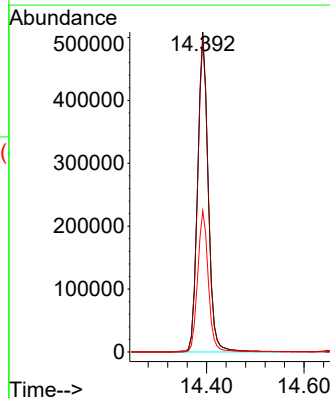
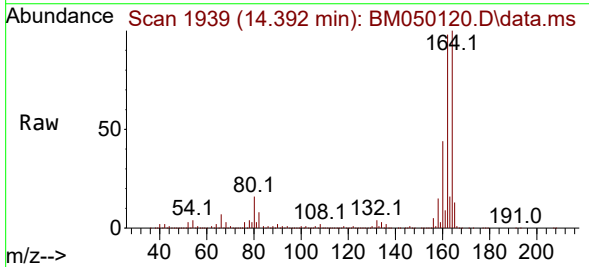
Instrument :
 BNA_M
 ClientSampleId :
 LOWER-WALL-PILE-B

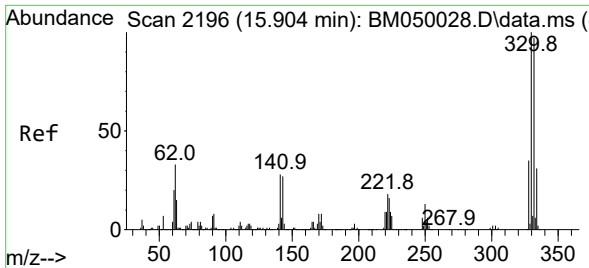
Tgt Ion: 82 Resp: 976378
 Ion Ratio Lower Upper
 82 100
 128 44.0 35.7 53.5
 54 43.9 35.4 53.2



#39
 Acenaphthene-d10
 Concen: 20.000 ng
 RT: 14.392 min Scan# 1939
 Delta R.T. -0.018 min
 Lab File: BM050120.D
 Acq: 06 May 2025 15:20

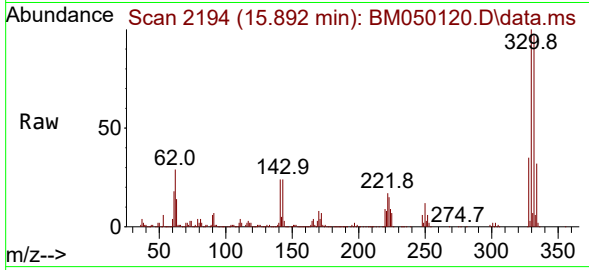
Tgt Ion: 164 Resp: 769427
 Ion Ratio Lower Upper
 164 100
 162 97.8 79.4 119.0
 160 44.1 36.2 54.4



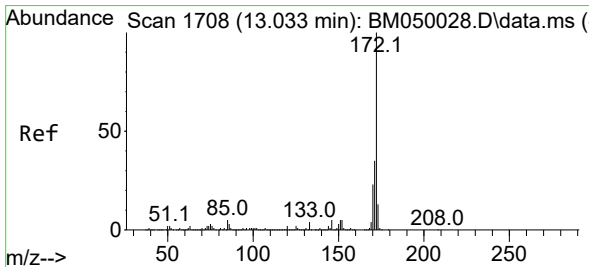
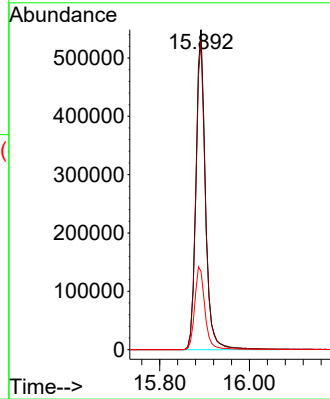
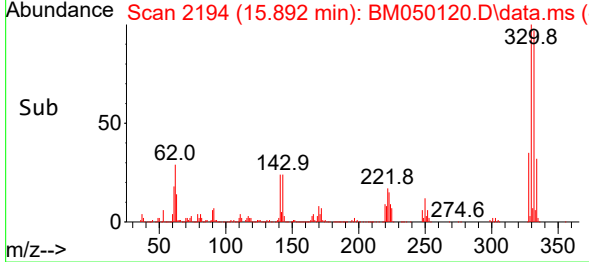


#42
 2,4,6-Tribromophenol
 Concen: 70.931 ng
 RT: 15.892 min Scan# 2194
 Delta R.T. -0.012 min
 Lab File: BM050120.D
 Acq: 06 May 2025 15:20

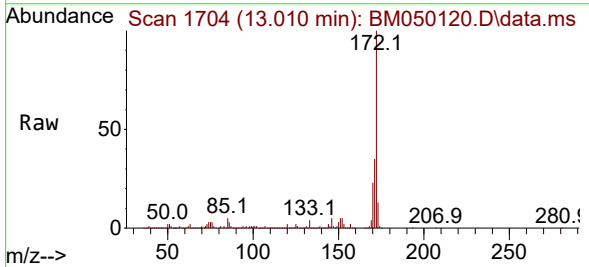
Instrument : BNA_M
 ClientSampleId : LOWER-WALL-PILE-B



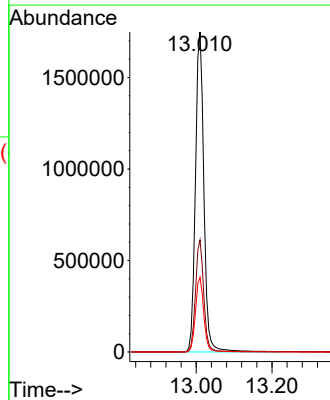
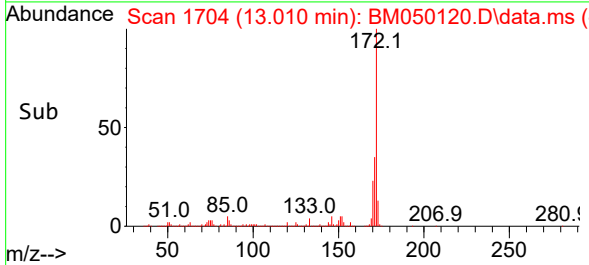
Tgt Ion:330 Resp: 806981
 Ion Ratio Lower Upper
 330 100
 332 96.8 77.3 115.9
 141 27.8 22.5 33.7

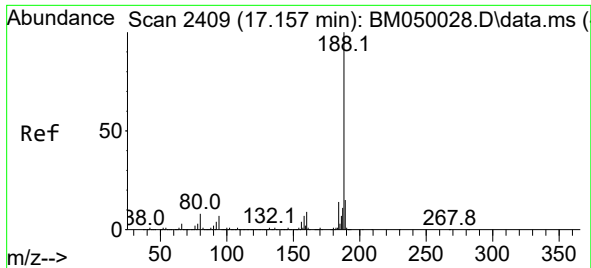


#45
 2-Fluorobiphenyl
 Concen: 41.858 ng
 RT: 13.010 min Scan# 1704
 Delta R.T. -0.023 min
 Lab File: BM050120.D
 Acq: 06 May 2025 15:20



Tgt Ion:172 Resp: 2722476
 Ion Ratio Lower Upper
 172 100
 171 35.0 27.8 41.6
 170 23.3 18.6 28.0



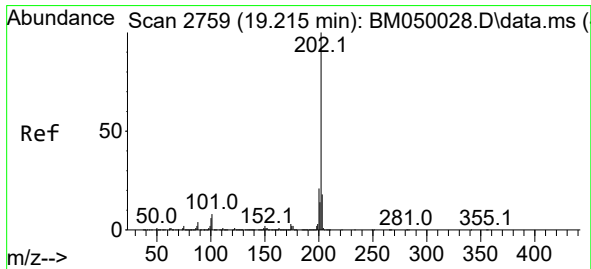
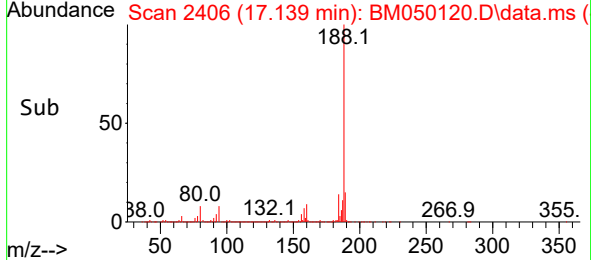
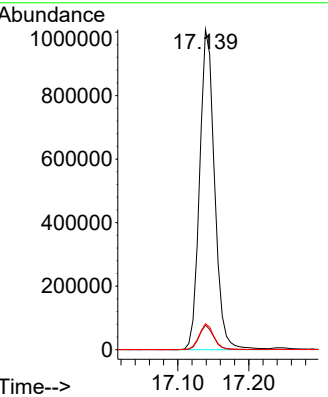
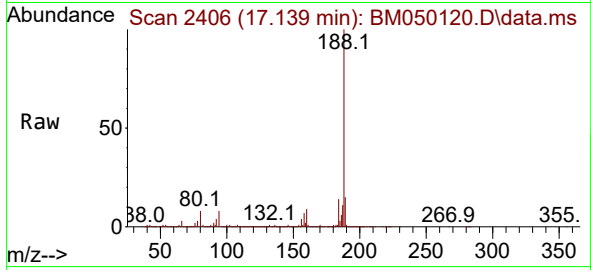


#64
 Phenanthrene-d10
 Concen: 20.000 ng
 RT: 17.139 min Scan# 24
 Delta R.T. -0.018 min
 Lab File: BM050120.D
 Acq: 06 May 2025 15:20

Instrument :
 BNA_M
 ClientSampleId :
 LOWER-WALL-PILE-B

Tgt Ion:188 Resp: 1473166

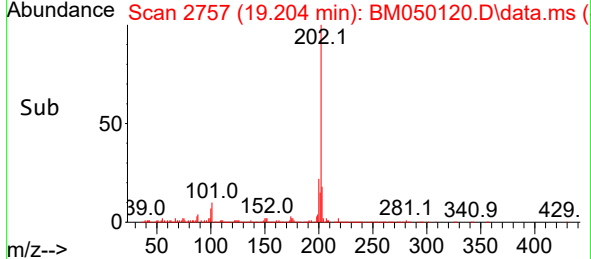
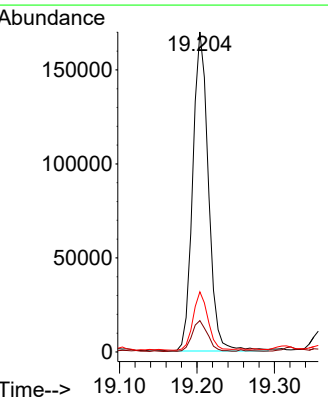
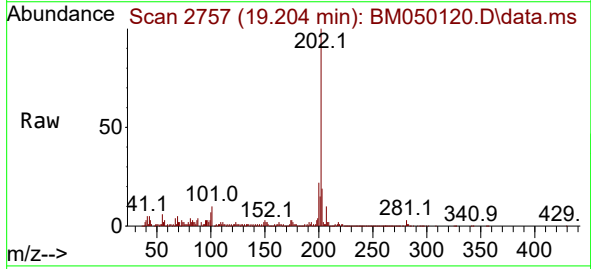
Ion	Ratio	Lower	Upper
188	100		
94	7.6	5.7	8.5
80	8.1	6.2	9.4

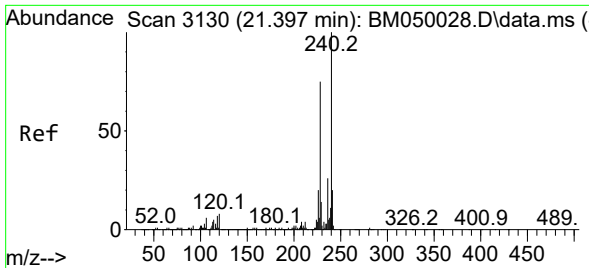


#75
 Fluoranthene
 Concen: 2.448 ng
 RT: 19.204 min Scan# 2757
 Delta R.T. -0.012 min
 Lab File: BM050120.D
 Acq: 06 May 2025 15:20

Tgt Ion:202 Resp: 238848

Ion	Ratio	Lower	Upper
202	100		
101	9.8	0.0	28.0
203	18.8	0.0	37.7

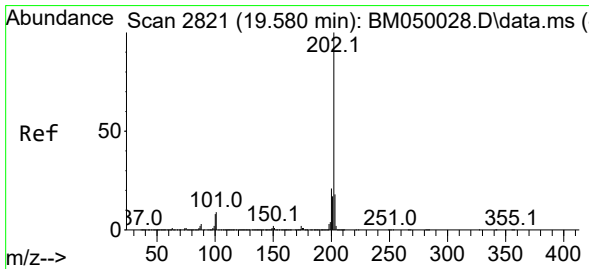
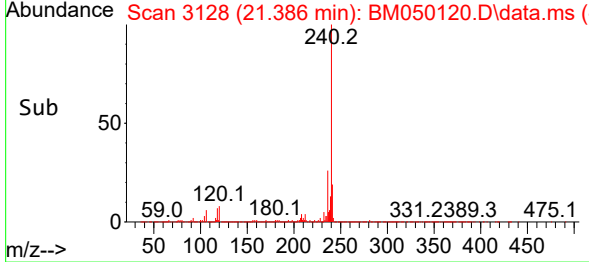
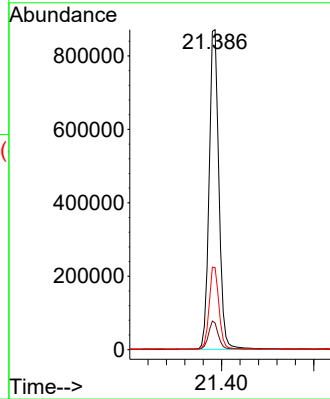
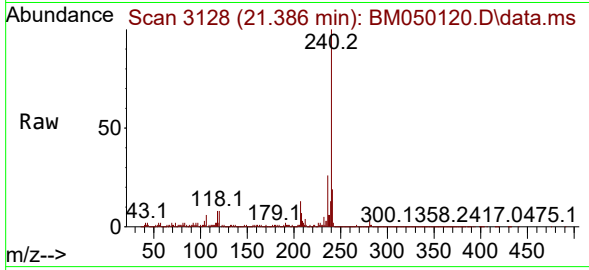




#76
 Chrysene-d12
 Concen: 20.000 ng
 RT: 21.386 min Scan# 31
 Delta R.T. -0.011 min
 Lab File: BM050120.D
 Acq: 06 May 2025 15:20

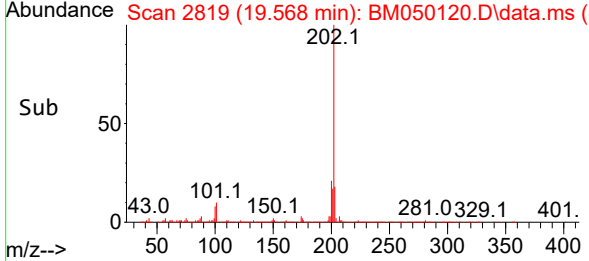
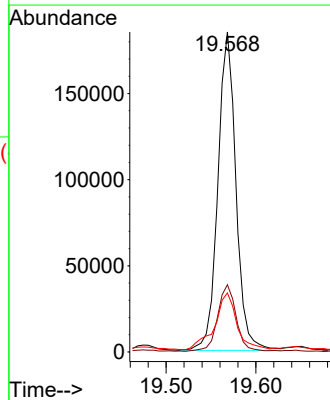
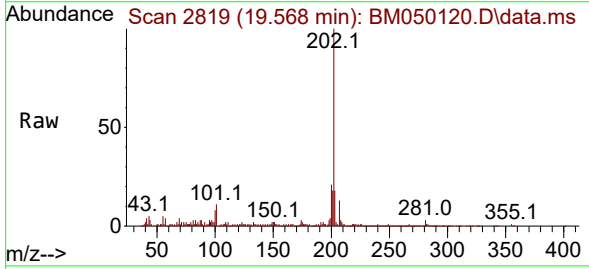
Instrument :
 BNA_M
 ClientSampleId :
 LOWER-WALL-PILE-B

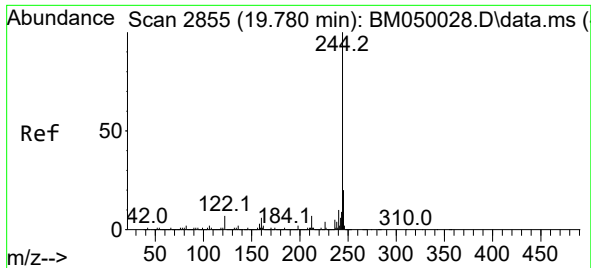
Tgt Ion:240 Resp: 1291742
 Ion Ratio Lower Upper
 240 100
 120 8.4 6.5 9.7
 236 25.7 20.9 31.3



#78
 Pyrene
 Concen: 2.847 ng
 RT: 19.568 min Scan# 2819
 Delta R.T. -0.012 min
 Lab File: BM050120.D
 Acq: 06 May 2025 15:20

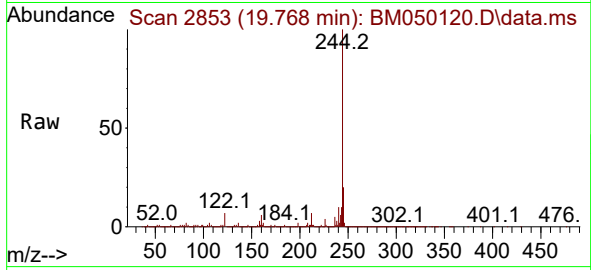
Tgt Ion:202 Resp: 258217
 Ion Ratio Lower Upper
 202 100
 200 21.0 16.7 25.1
 203 18.4 14.1 21.1



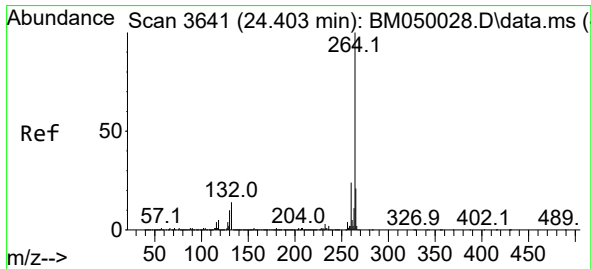
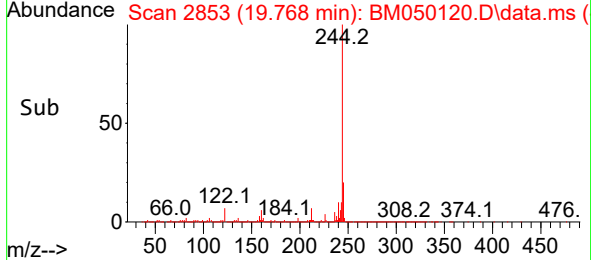
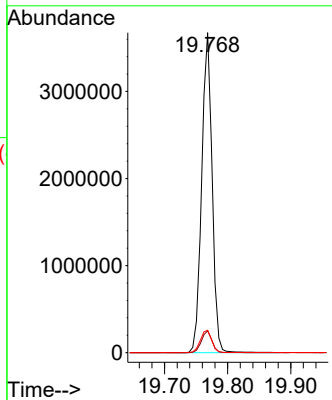


#79
 Terphenyl-d14
 Concen: 48.154 ng
 RT: 19.768 min Scan# 21
 Delta R.T. -0.012 min
 Lab File: BM050120.D
 Acq: 06 May 2025 15:20

Instrument :
 BNA_M
 ClientSampleId :
 LOWER-WALL-PILE-B

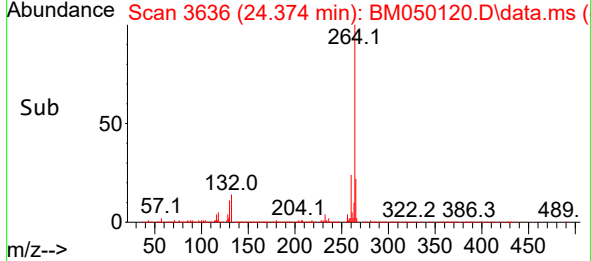
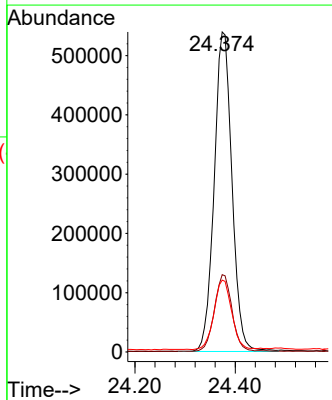
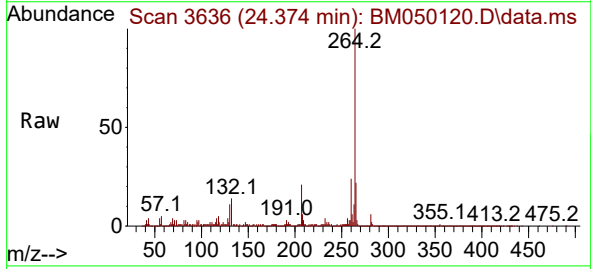


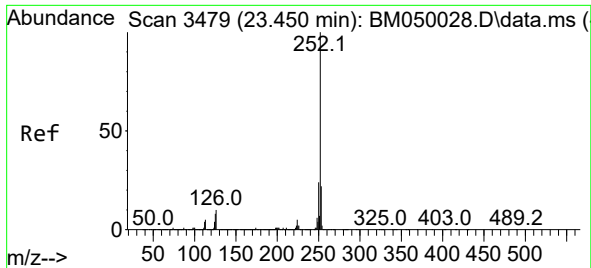
Tgt Ion:244 Resp: 4203647
 Ion Ratio Lower Upper
 244 100
 212 6.8 5.6 8.4
 122 7.0 5.6 8.4



#86
 Perylene-d12
 Concen: 20.000 ng
 RT: 24.374 min Scan# 3636
 Delta R.T. -0.029 min
 Lab File: BM050120.D
 Acq: 06 May 2025 15:20

Tgt Ion:264 Resp: 1325884
 Ion Ratio Lower Upper
 264 100
 260 24.1 18.8 28.2
 265 22.5 17.0 25.4

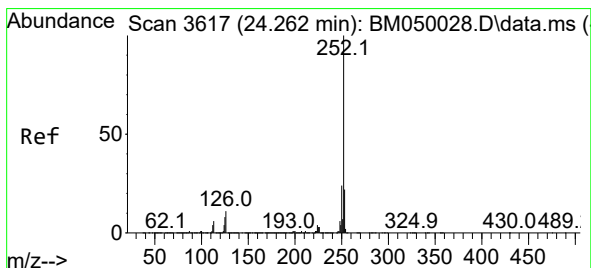
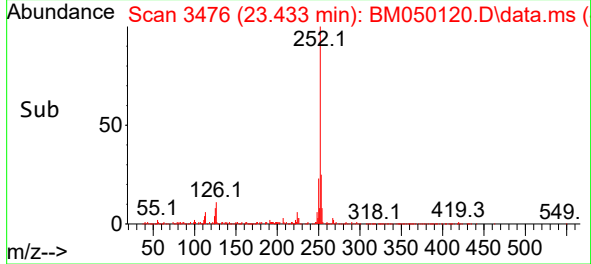
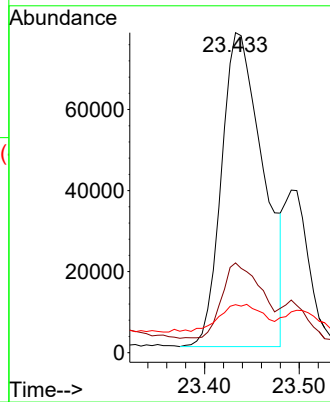
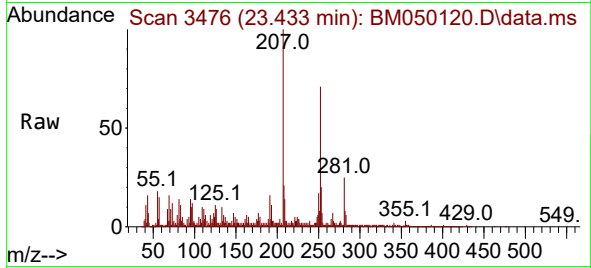




#88
 Benzo(b)fluoranthene
 Concen: 2.756 ng
 RT: 23.433 min Scan# 3476
 Delta R.T. -0.018 min
 Lab File: BM050120.D
 Acq: 06 May 2025 15:20

Instrument : BNA_M
 ClientSampleId : LOWER-WALL-PILE-B

Tgt Ion:252 Resp: 237651
 Ion Ratio Lower Upper
 252 100
 253 28.1 17.7 26.5#
 125 15.0 6.1 9.1#



#90
 Benzo(a)pyrene
 Concen: 2.089 ng
 RT: 24.239 min Scan# 3613
 Delta R.T. -0.023 min
 Lab File: BM050120.D
 Acq: 06 May 2025 15:20

Tgt Ion:252 Resp: 168717
 Ion Ratio Lower Upper
 252 100
 253 25.3 17.4 26.0
 125 15.8 6.6 9.8#

