

Data Path : Z:\pestpcbsrv\HPCHEM1\ECD\_D\Data\PD051325\  
 Data File : PD088502.D  
 Signal(s) : Signal #1: ECD1A.ch Signal #2: ECD2B.ch  
 Acq On : 13 May 2025 10:35  
 Operator : AR\AJ  
 Sample : Q1982-02  
 Misc :  
 ALS Vial : 7 Sample Multiplier: 1

**Instrument :**  
 ECD\_D  
**ClientSampleId :**  
 TP-2B

**Manual Integrations**  
**APPROVED**  
 Reviewed By :Abdul Mirza 05/14/2025  
 Supervised By :mohammad ahmed 05/20/2025

Integration File signal 1: autoint1.e  
 Integration File signal 2: autoint2.e  
 Quant Time: May 13 12:08:25 2025  
 Quant Method : Z:\pestpcbsrv\HPCHEM1\ECD\_D\Method\PD041825.M  
 Quant Title : GC Extractables  
 QLast Update : Sat Apr 19 06:32:27 2025  
 Response via : Initial Calibration  
 Integrator: ChemStation

Volume Inj. : 1 µl  
 Signal #1 Phase : ZB-MR1 Signal #2 Phase: ZB-MR2  
 Signal #1 Info : 30M x 0.32mm x0.5 Signal #2 Info : 30M x 0.32mm x 0.25µm

Compound	RT#1	RT#2	Resp#1	Resp#2	ng/ml	ng/ml
-----						
System Monitoring Compounds						
1) SA Tetrachlo...	3.551	2.882	39958325	275.4E6	20.005	18.832
28) SA Decachlor...	9.073	8.073	58928727	283.8E6	17.813	15.355m

Target Compounds

(f)=RT Delta > 1/2 Window (#)=Amounts differ by > 25% (m)=manual int.

Data Path : Z:\pestpcbsrv\HPCHEM1\ECD\_D\Data\PD051325\  
Data File : PD088502.D  
Signal(s) : Signal #1: ECD1A.ch Signal #2: ECD2B.ch  
Acq On : 13 May 2025 10:35  
Operator : AR\AJ  
Sample : Q1982-02  
Misc :  
ALS Vial : 7 Sample Multiplier: 1

**Instrument :**

ECD\_D

**ClientSampleId :**

TP-2B

**Manual Integrations**

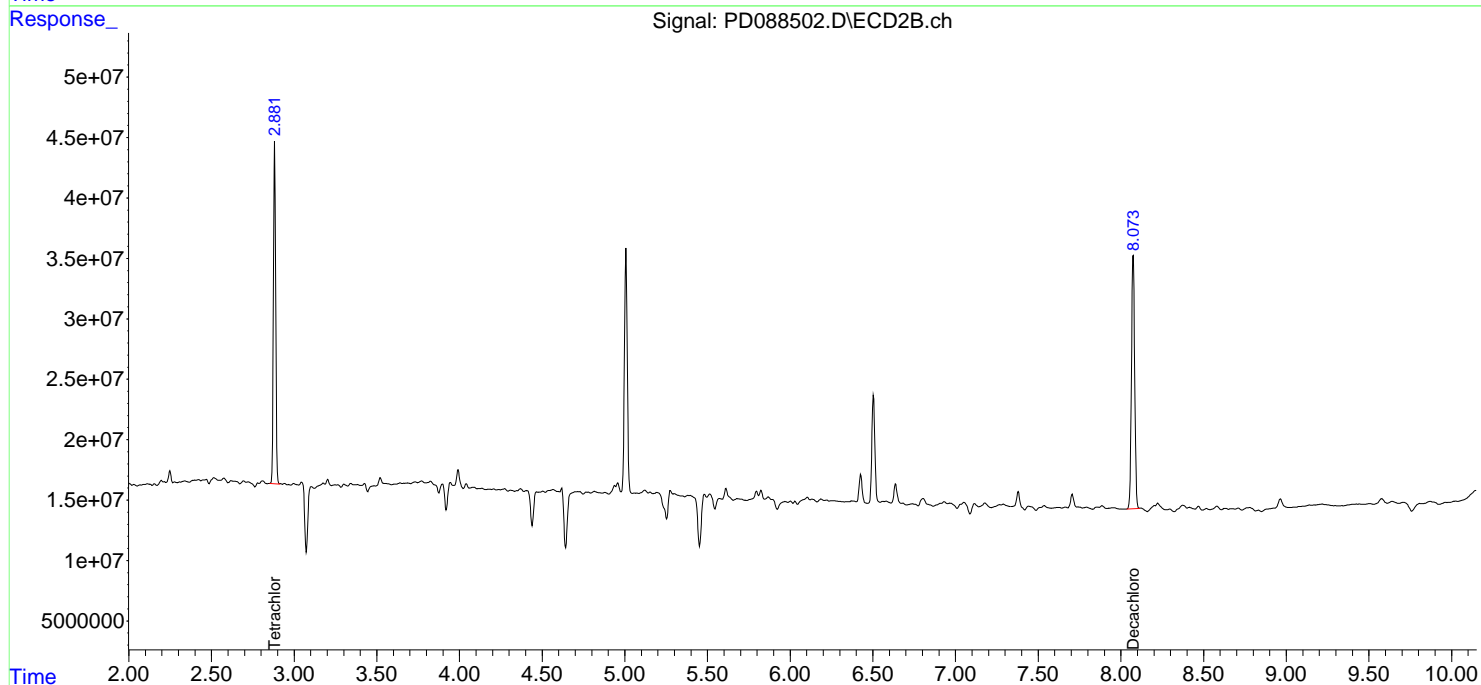
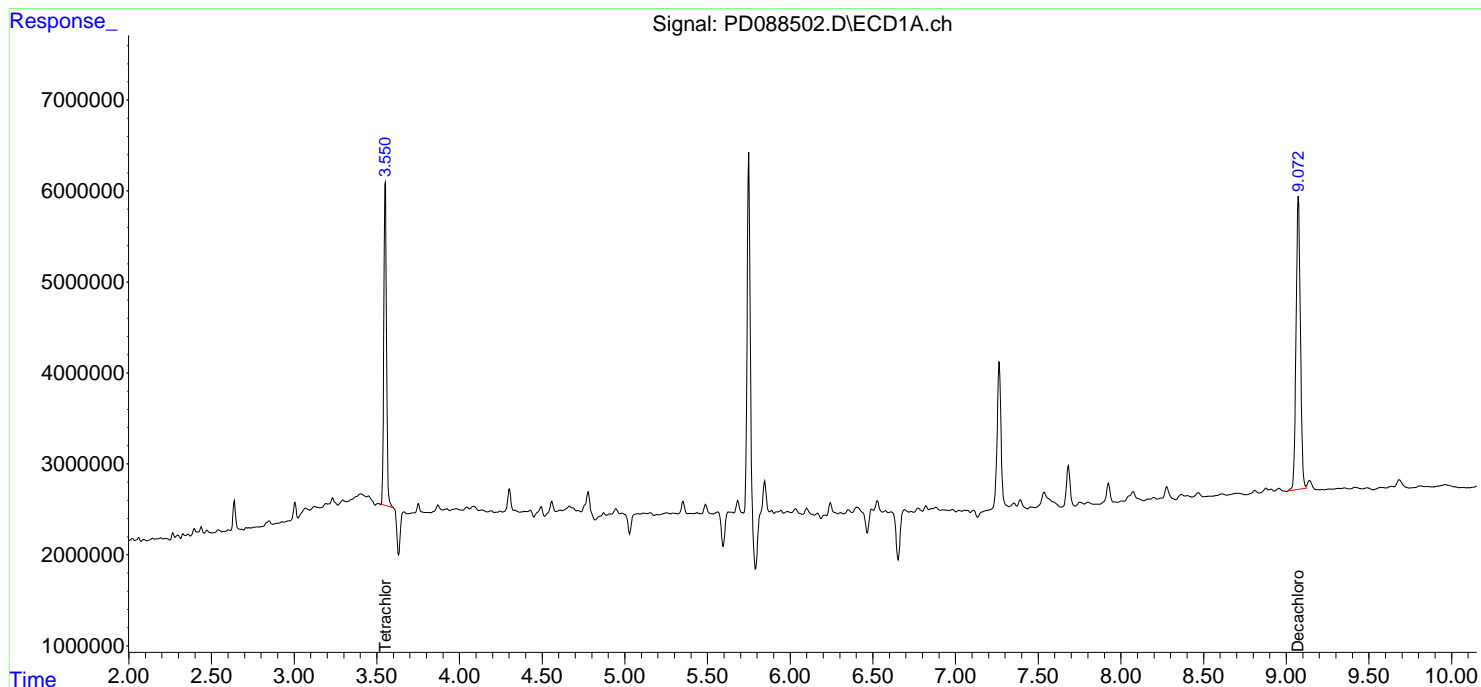
**APPROVED**

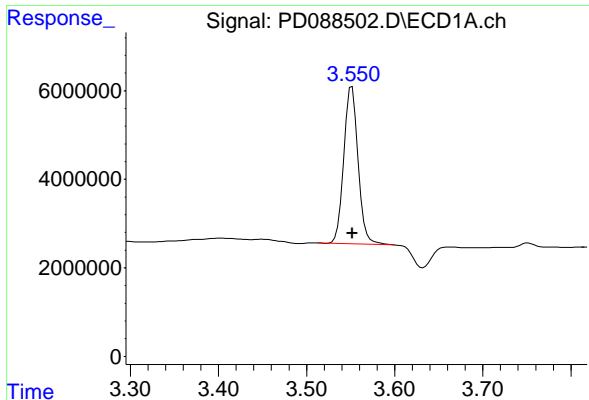
Reviewed By :Abdul Mirza 05/14/2025

Supervised By :mohammad ahmed 05/20/2025

Integration File signal 1: autoint1.e  
Integration File signal 2: autoint2.e  
Quant Time: May 13 12:08:25 2025  
Quant Method : Z:\pestpcbsrv\HPCHEM1\ECD\_D\Method\PD041825.M  
Quant Title : GC Extractables  
QLast Update : Sat Apr 19 06:32:27 2025  
Response via : Initial Calibration  
Integrator: ChemStation

Volume Inj. : 1 µl  
Signal #1 Phase : ZB-MR1 Signal #2 Phase: ZB-MR2  
Signal #1 Info : 30M x 0.32mm x0.5 Signal #2 Info : 30M x 0.32mm x 0.25µm





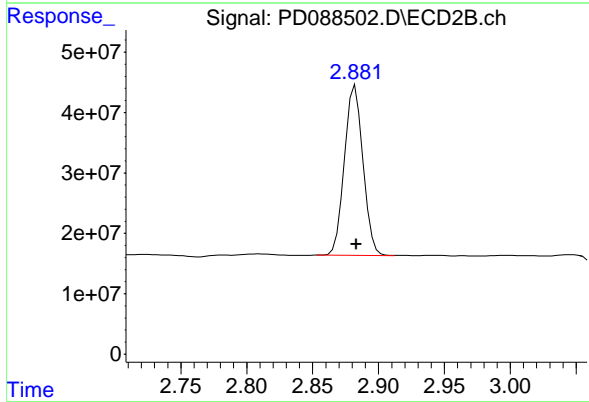
#1 Tetrachloro-m-xylene

R.T.: 3.551 min  
 Delta R.T.: 0.000 min  
 Response: 39958325  
 Conc: 20.01 ng/ml

Instrument : ECD\_D  
 Client SampleId : TP-2B

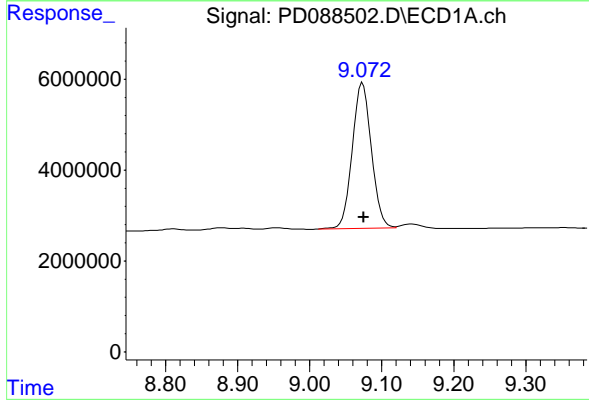
Manual Integrations  
 APPROVED

Reviewed By :Abdul Mirza 05/14/2025  
 Supervised By :mohammad ahmed 05/20/2025



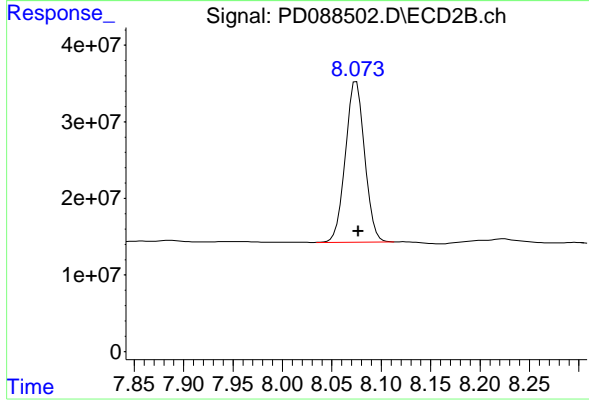
#1 Tetrachloro-m-xylene

R.T.: 2.882 min  
 Delta R.T.: 0.000 min  
 Response: 275360860  
 Conc: 18.83 ng/ml



#28 Decachlorobiphenyl

R.T.: 9.073 min  
 Delta R.T.: -0.001 min  
 Response: 58928727  
 Conc: 17.81 ng/ml



#28 Decachlorobiphenyl

R.T.: 8.073 min  
 Delta R.T.: -0.004 min  
 Response: 283759445  
 Conc: 15.36 ng/ml m