

Data Path : Z:\pestpcbsrv\HPCHEM1\ECD_0\Data\P0051225\
 Data File : P0111013.D
 Signal(s) : Signal #1: ECD1A.ch Signal #2: ECD2B.ch
 Acq On : 12 May 2025 14:00
 Operator : YP/AJ
 Sample : Q1984-03
 Misc :
 ALS Vial : 10 Sample Multiplier: 1

Instrument :
 ECD_0
ClientSampleId :
 OU4-PCS-TC-34-050725

Integration File signal 1: autoint1.e
 Integration File signal 2: autoint2.e
 Quant Time: May 13 01:52:05 2025
 Quant Method : Z:\pestpcbsrv\HPCHEM1\ECD_0\methods\P0050225.M
 Quant Title : GC EXTRACTABLES
 QLast Update : Fri May 02 23:47:49 2025
 Response via : Initial Calibration
 Integrator: ChemStation

Volume Inj. : 2 µl
 Signal #1 Phase : ZB-MR1 Signal #2 Phase: ZB-MR2
 Signal #1 Info : 30Mx0.32mmx 0.50µ Signal #2 Info : 30M x 0.32mm x 0.25µm

Compound	RT#1	RT#2	Resp#1	Resp#2	ng/ml	ng/ml

System Monitoring Compounds						
1) SA Tetrachlo...	3.684	3.680	132.7E6	115.3E6	23.205	23.812
2) SA Decachlor...	8.723	8.672	98749209	35045453	16.182	20.771 #

Target Compounds

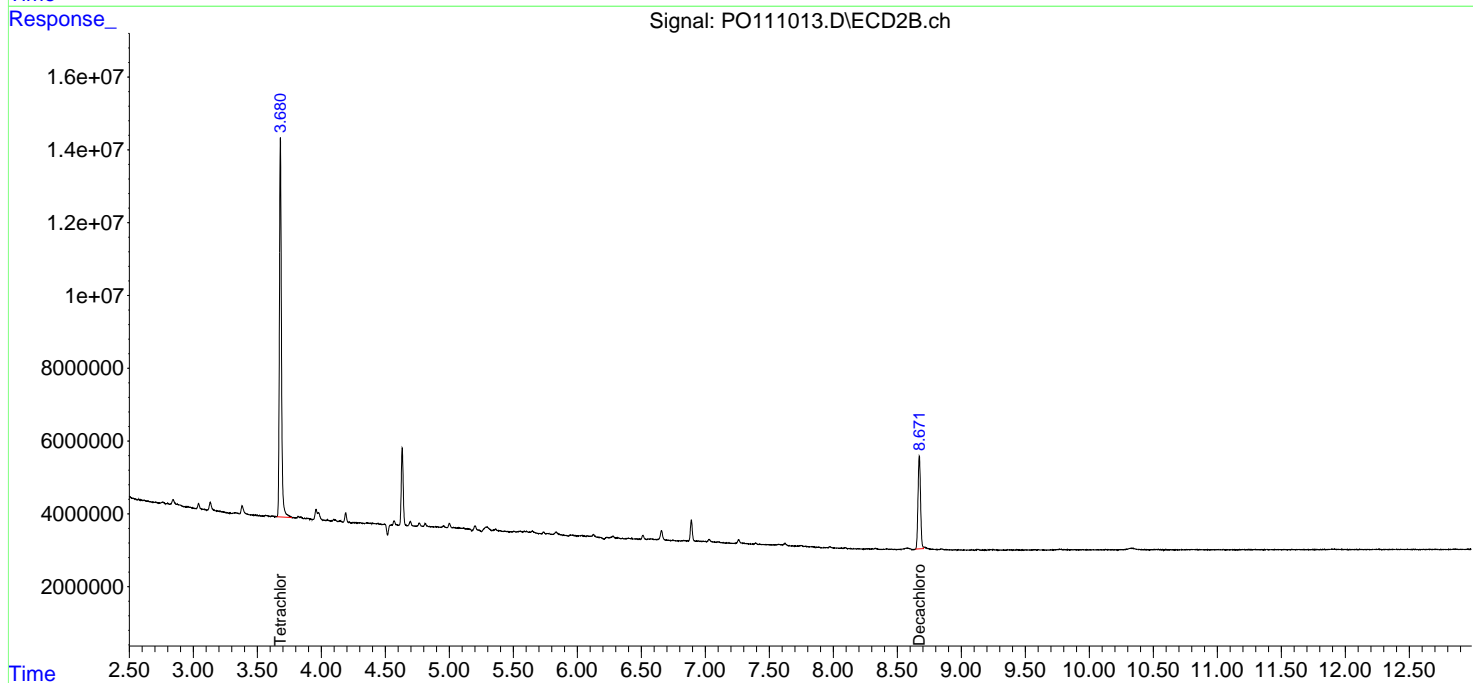
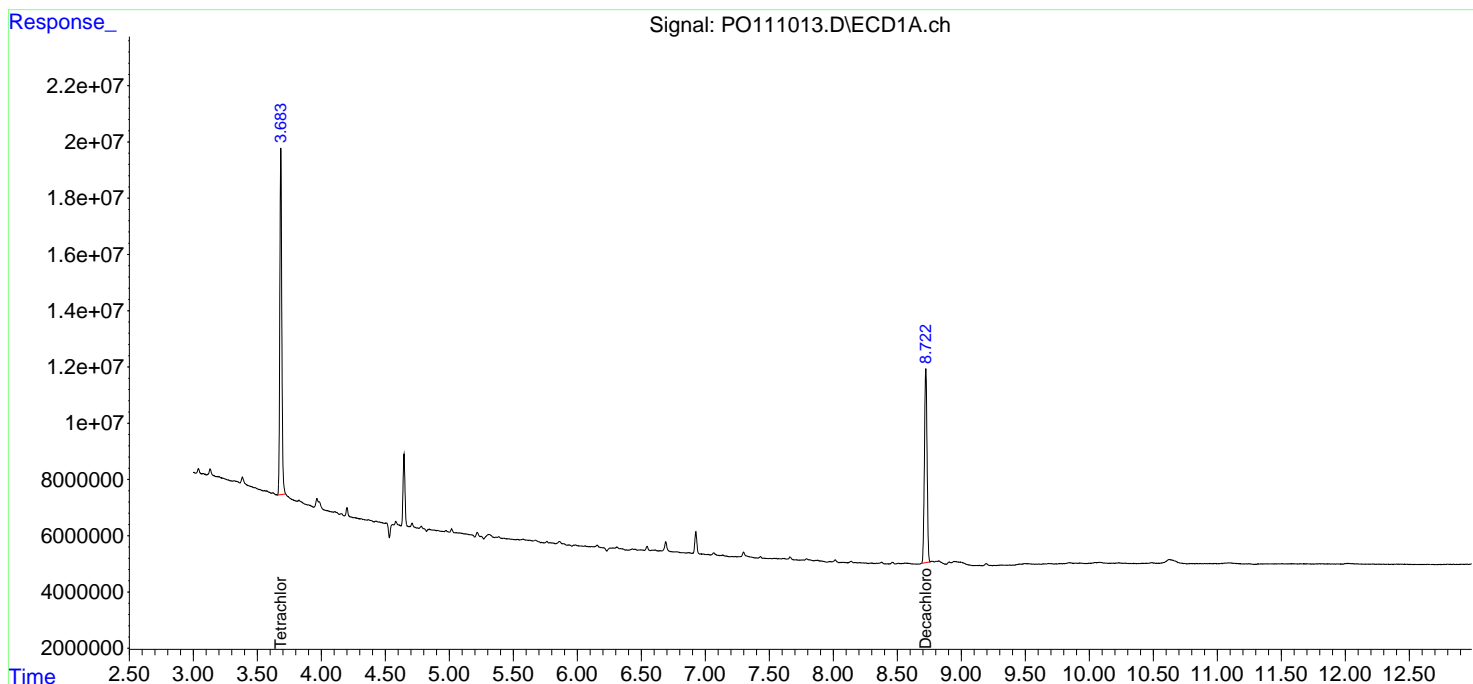
(f)=RT Delta > 1/2 Window (#)=Amounts differ by > 25% (m)=manual int.

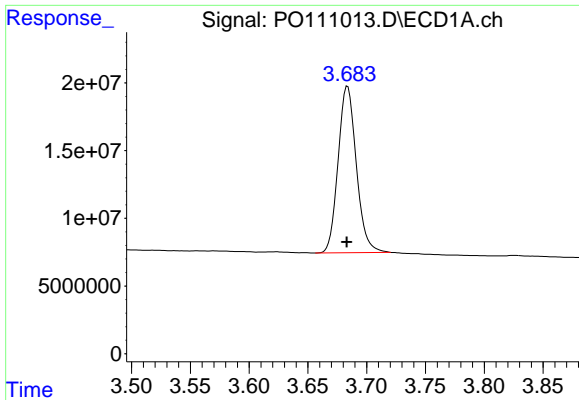
Data Path : Z:\pestpcbsrv\HPCHEM1\ECD_0\Data\P0051225\
 Data File : P0111013.D
 Signal(s) : Signal #1: ECD1A.ch Signal #2: ECD2B.ch
 Acq On : 12 May 2025 14:00
 Operator : YP/AJ
 Sample : Q1984-03
 Misc :
 ALS Vial : 10 Sample Multiplier: 1

Instrument :
 ECD_0
 ClientSampleId :
 OU4-PCS-TC-34-050725

Integration File signal 1: autoint1.e
 Integration File signal 2: autoint2.e
 Quant Time: May 13 01:52:05 2025
 Quant Method : Z:\pestpcbsrv\HPCHEM1\ECD_0\methods\P0050225.M
 Quant Title : GC EXTRACTABLES
 QLast Update : Fri May 02 23:47:49 2025
 Response via : Initial Calibration
 Integrator: ChemStation

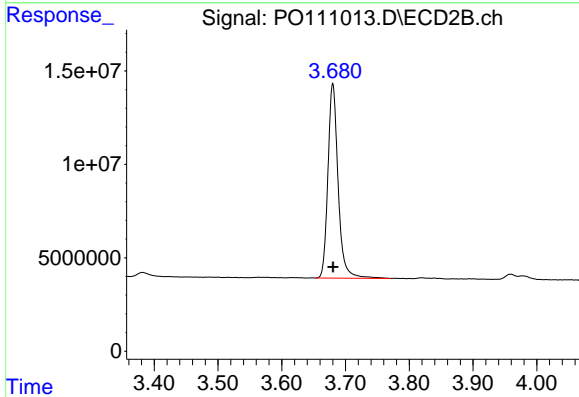
Volume Inj. : 2 µl
 Signal #1 Phase : ZB-MR1 Signal #2 Phase: ZB-MR2
 Signal #1 Info : 30Mx0.32mmx 0.50µ Signal #2 Info : 30M x 0.32mm x 0.25µm



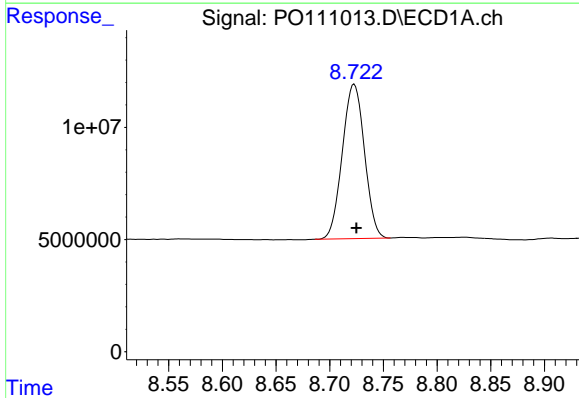


#1 Tetrachloro-m-xylene
 R.T.: 3.684 min
 Delta R.T.: 0.000 min
 Response: 132749375
 Conc: 23.20 ng/ml

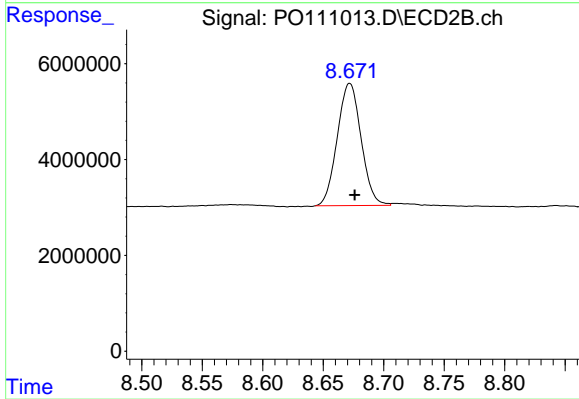
Instrument :
 ECD_O
 ClientSampleId :
 OU4-PCS-TC-34-050725



#1 Tetrachloro-m-xylene
 R.T.: 3.680 min
 Delta R.T.: 0.000 min
 Response: 115322132
 Conc: 23.81 ng/ml



#2 Decachlorobiphenyl
 R.T.: 8.723 min
 Delta R.T.: -0.002 min
 Response: 98749209
 Conc: 16.18 ng/ml



#2 Decachlorobiphenyl
 R.T.: 8.672 min
 Delta R.T.: -0.004 min
 Response: 35045453
 Conc: 20.77 ng/ml