

Data Path : Z:\pestpcbsrv\HPCHEM1\ECD_D\Data\PD041825\
 Data File : PD088128.D
 Signal(s) : Signal #1: ECD1A.ch Signal #2: ECD2B.ch
 Acq On : 18 Apr 2025 14:51
 Operator : AR\AJ
 Sample : PSTDICC005
 Misc :
 ALS Vial : 9 Sample Multiplier: 1

Instrument :
 ECD_D
ClientSampleId :
 PSTDICC005

Manual Integrations
APPROVED
 Reviewed By :Abdul Mirza 04/19/2025
 Supervised By :mohammad ahmed 04/22/2025

Integration File signal 1: autoint1.e
 Integration File signal 2: autoint2.e
 Quant Time: Apr 19 03:53:24 2025
 Quant Method : Z:\pestpcbsrv\HPCHEM1\ECD_D\Method\PD041825.M
 Quant Title : GC Extractables
 QLast Update : Sat Apr 19 03:51:59 2025
 Response via : Initial Calibration
 Integrator: ChemStation

Volume Inj. : 1 µl
 Signal #1 Phase : ZB-MR2 Signal #2 Phase: ZB-MR2
 Signal #1 Info : 30M x 0.32mm x0.5 Signal #2 Info : 30M x 0.32mm x 0.25µm

Compound	RT#1	RT#2	Resp#1	Resp#2	ng/ml	ng/ml

System Monitoring Compounds						
1) SA Tetrachlo...	3.552	2.883	10677571	86225193	5.508	6.154
28) SA Decachlor...	9.075	8.076	19250443	113.4E6	6.057	6.490
Target Compounds						
2) A alpha-BHC	4.001	3.396	19344032	129.8E6	4.456	5.874 #
3) MA gamma-BHC...	4.332	3.733	20113508	128.2E6	4.841	6.234 #
4) MA Heptachlor	4.931	4.086	20057945	126.6E6	5.042	6.169
5) MB Aldrin	5.273	4.372	19278191	121.3E6	4.928	6.063
6) B beta-BHC	4.516	4.028	8800396	55407278	5.573	6.262
7) B delta-BHC	4.764	4.265	19851779	122.2E6	4.871m	5.967
8) B Heptachlo...	5.693	4.876	18623118	112.9E6	5.342	6.244
9) A Endosulfan I	6.076	5.251	17577772	107.8E6	5.320	6.253
10) B gamma-Chl...	5.948	5.130	18576714	119.7E6	5.253	6.157
11) B alpha-Chl...	6.029	5.194	18782686	116.3E6	5.322	6.201
12) B 4,4'-DDE	6.197	5.379	15929607	115.5E6	4.916	6.117
13) MA Dieldrin	6.349	5.517	17671896	116.9E6	5.006	6.106
14) MA Endrin	6.576	5.793	14827210	107.9E6	5.051	6.177
15) B Endosulfa...	6.787	6.084	17419714	105.5E6	5.792	6.301
16) A 4,4'-DDD	6.706	5.933	12295875	96096151	4.928	6.085
17) MA 4,4'-DDT	7.022	6.188	13556042	91724476	4.921	5.478
18) B Endrin al...	6.916	6.262	12478868	80534454	5.554	6.338
19) B Endosulfa...	7.151	6.486	15272374	102.6E6	5.440	6.248
20) A Methoxychlor	7.495	6.758	8094629	53678604	5.515	6.073
21) B Endrin ke...	7.631	6.995	16074498	112.9E6	5.292	6.304
22) Mirex	8.116	7.189	13799458	91589011	6.134	6.532

(f)=RT Delta > 1/2 Window (#)=Amounts differ by > 25% (m)=manual int.

Data Path : Z:\pestpcbsrv\HPCHEM1\ECD_D\Data\PD041825\
 Data File : PD088128.D
 Signal(s) : Signal #1: ECD1A.ch Signal #2: ECD2B.ch
 Acq On : 18 Apr 2025 14:51
 Operator : AR\AJ
 Sample : PSTDICC005
 Misc :
 ALS Vial : 9 Sample Multiplier: 1

Instrument :

ECD_D

ClientSampleId :

PSTDICC005

Manual Integrations

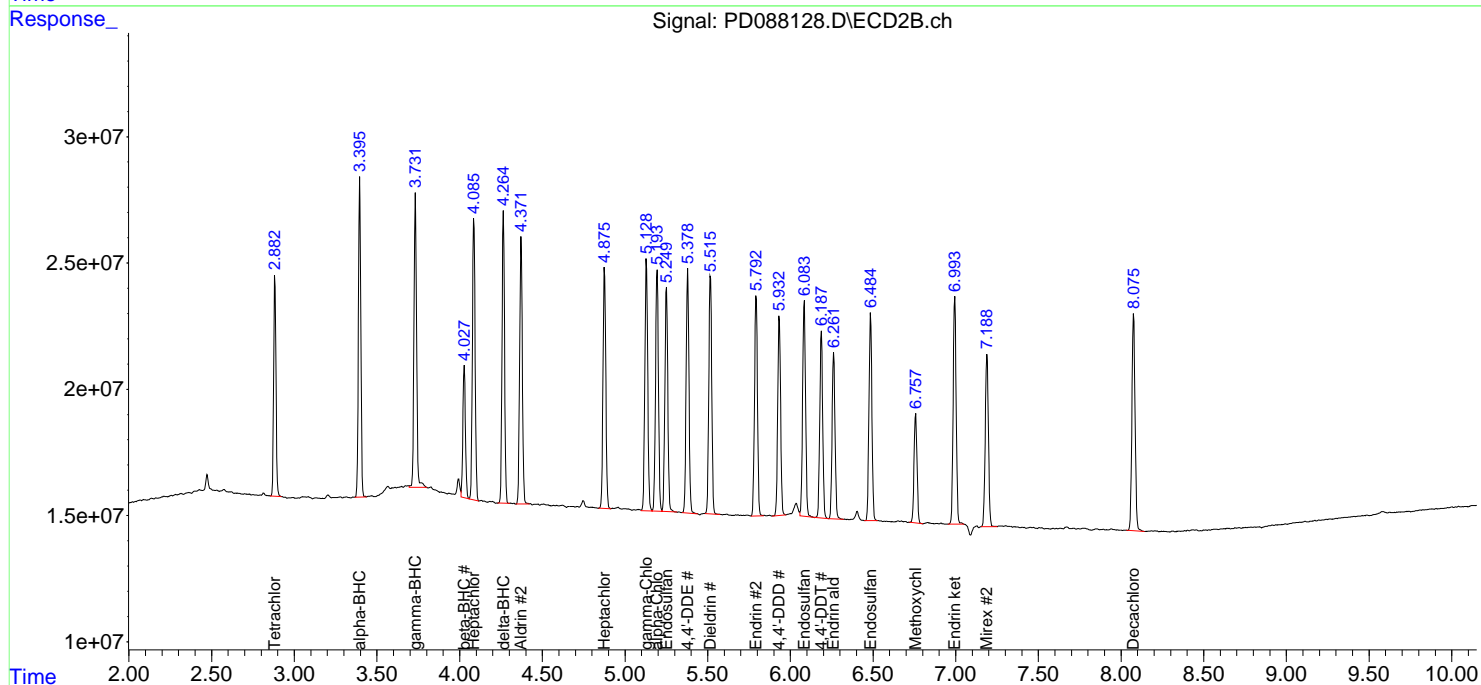
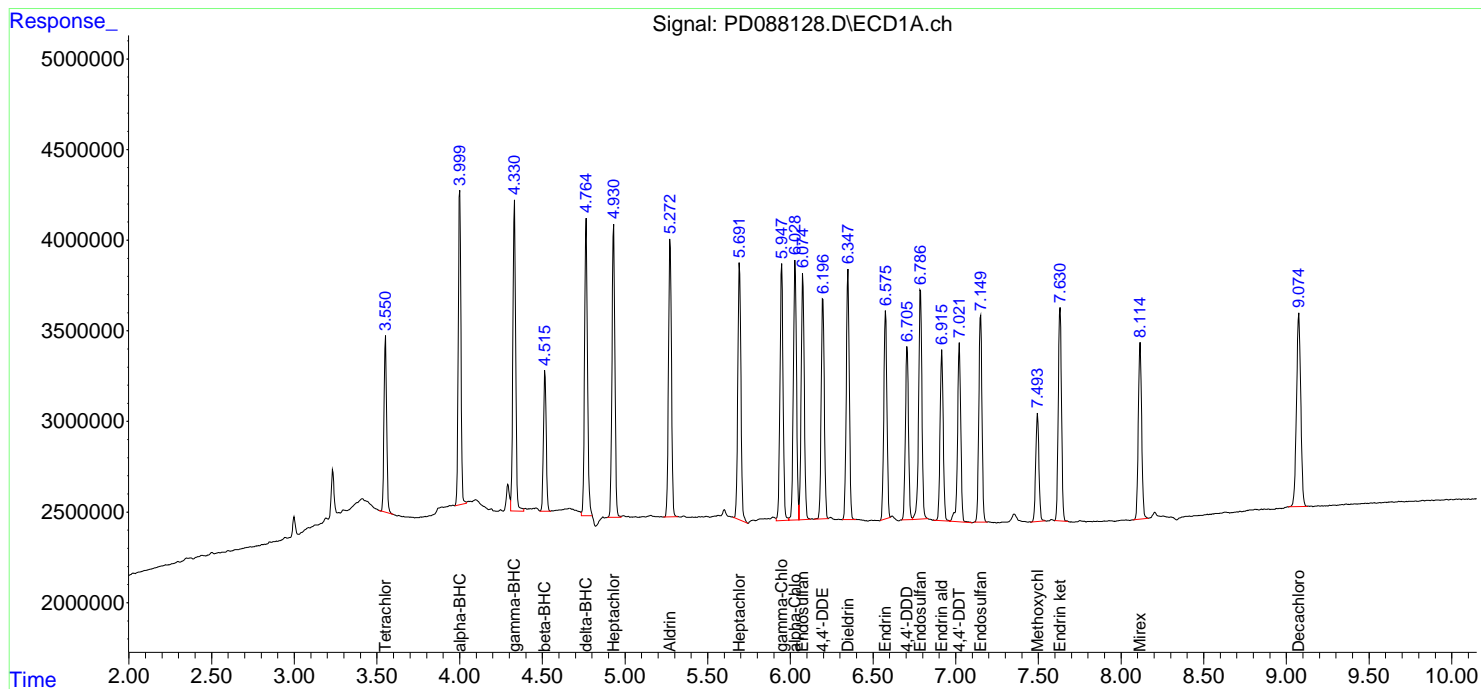
APPROVED

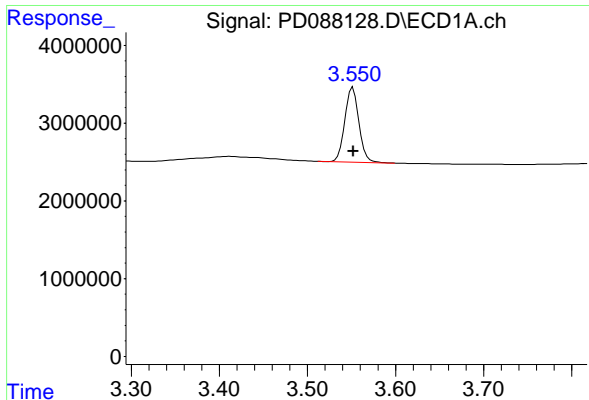
Reviewed By :Abdul Mirza 04/19/2025

Supervised By :mohammad ahmed 04/22/2025

Integration File signal 1: autoint1.e
 Integration File signal 2: autoint2.e
 Quant Time: Apr 19 03:53:24 2025
 Quant Method : Z:\pestpcbsrv\HPCHEM1\ECD_D\Method\PD041825.M
 Quant Title : GC Extractables
 QLast Update : Sat Apr 19 03:51:59 2025
 Response via : Initial Calibration
 Integrator: ChemStation

Volume Inj. : 1 µl
 Signal #1 Phase : ZB-MR1 Signal #2 Phase: ZB-MR2
 Signal #1 Info : 30M x 0.32mm x0.5 Signal #2 Info : 30M x 0.32mm x 0.25µm





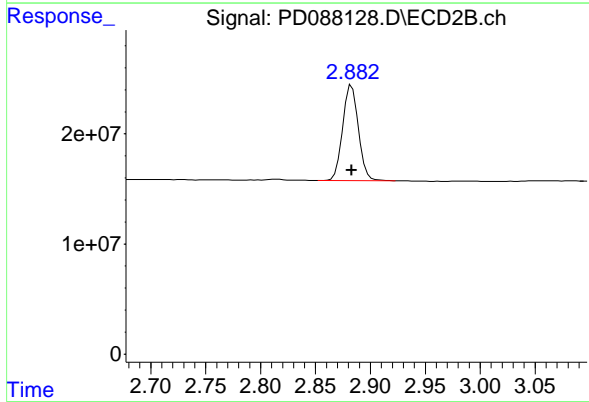
#1 Tetrachloro-m-xylene

R.T.: 3.552 min
 Delta R.T.: 0.000 min
 Response: 10677571
 Conc: 5.51 ng/ml

Instrument : ECD_D
 ClientSampleId : PSTDICC005

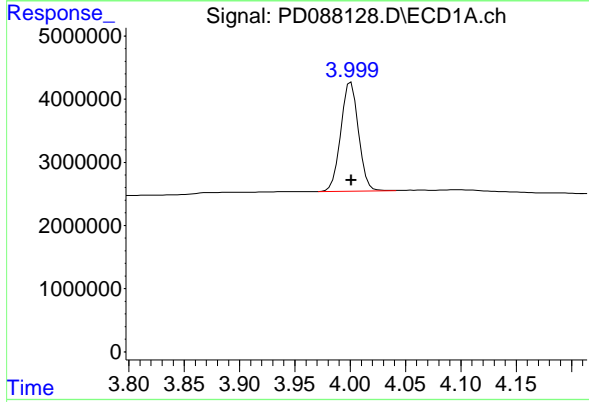
Manual Integrations
 APPROVED

Reviewed By :Abdul Mirza 04/19/2025
 Supervised By :mohammad ahmed 04/22/2025



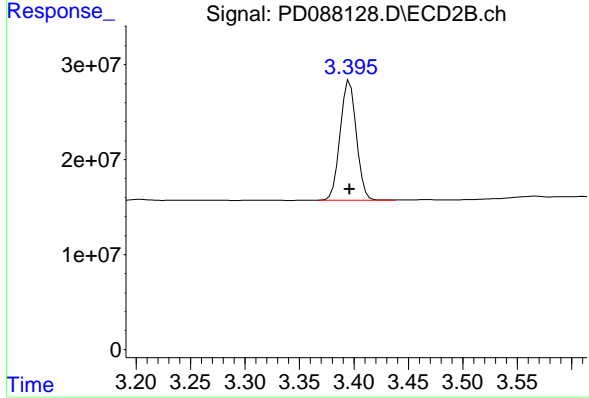
#1 Tetrachloro-m-xylene

R.T.: 2.883 min
 Delta R.T.: 0.000 min
 Response: 86225193
 Conc: 6.15 ng/ml



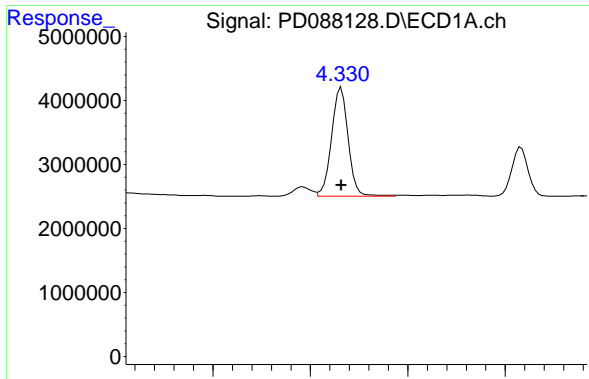
#2 alpha-BHC

R.T.: 4.001 min
 Delta R.T.: 0.000 min
 Response: 19344032
 Conc: 4.46 ng/ml



#2 alpha-BHC

R.T.: 3.396 min
 Delta R.T.: 0.000 min
 Response: 129769941
 Conc: 5.87 ng/ml



#3 gamma-BHC (Lindane)

R.T.: 4.332 min
 Delta R.T.: 0.000 min
 Response: 20113508
 Conc: 4.84 ng/ml

Instrument :

ECD_D

Client SampleId :

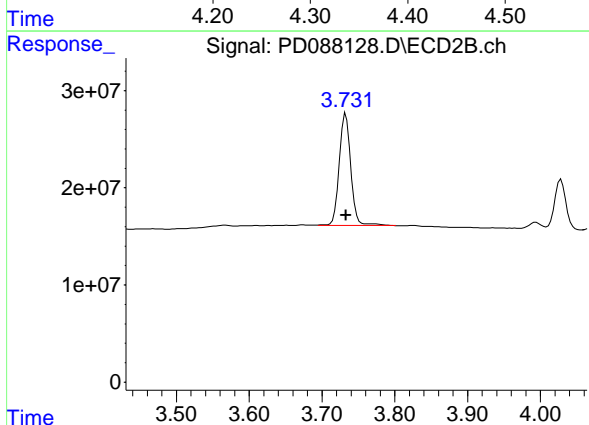
PSTDICC005

Manual Integrations

APPROVED

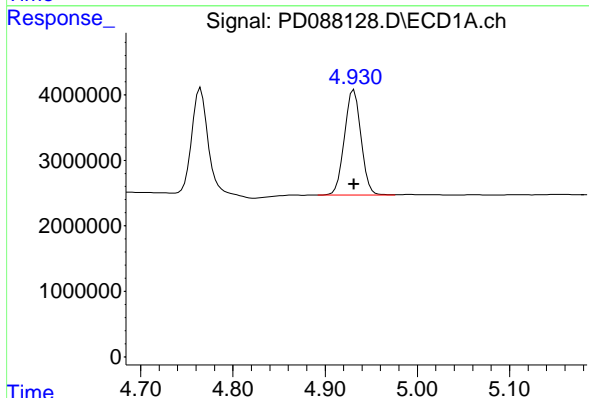
Reviewed By :Abdul Mirza 04/19/2025

Supervised By :mohammad ahmed 04/22/2025



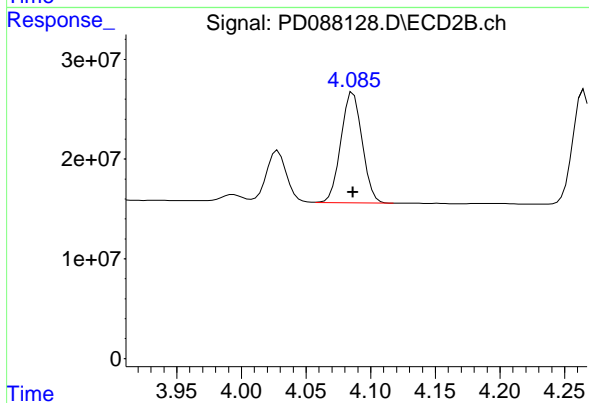
#3 gamma-BHC (Lindane)

R.T.: 3.733 min
 Delta R.T.: 0.000 min
 Response: 128151787
 Conc: 6.23 ng/ml



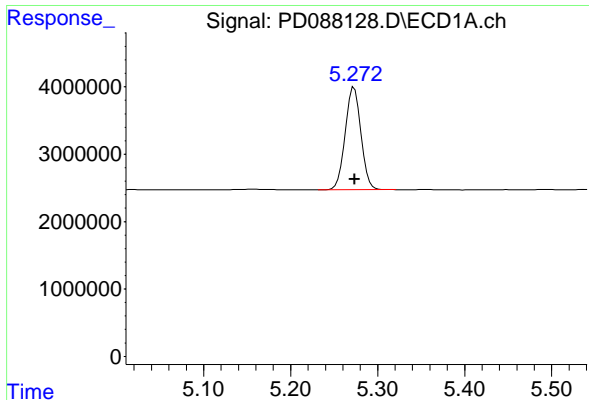
#4 Heptachlor

R.T.: 4.931 min
 Delta R.T.: 0.000 min
 Response: 20057945
 Conc: 5.04 ng/ml



#4 Heptachlor

R.T.: 4.086 min
 Delta R.T.: 0.000 min
 Response: 126603704
 Conc: 6.17 ng/ml



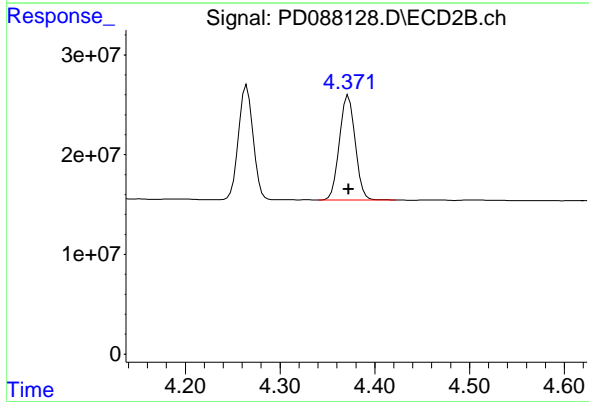
#5 Aldrin

R.T.: 5.273 min
 Delta R.T.: 0.000 min
 Response: 19278191
 Conc: 4.93 ng/ml

Instrument : ECD_D
 ClientSampleId : PSTDICC005

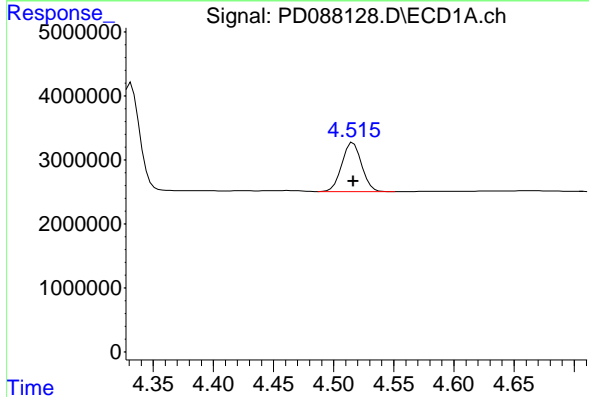
Manual Integrations
 APPROVED

Reviewed By :Abdul Mirza 04/19/2025
 Supervised By :mohammad ahmed 04/22/2025



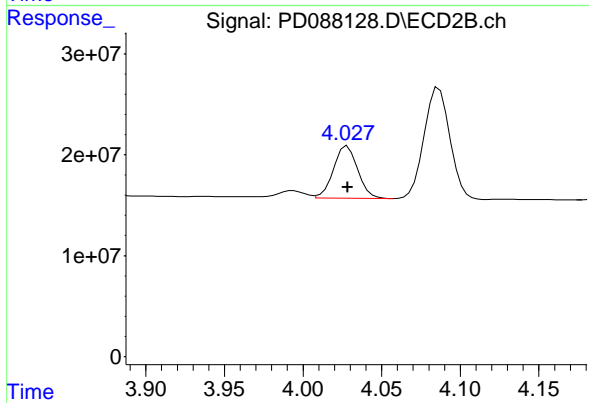
#5 Aldrin

R.T.: 4.372 min
 Delta R.T.: 0.000 min
 Response: 121269873
 Conc: 6.06 ng/ml



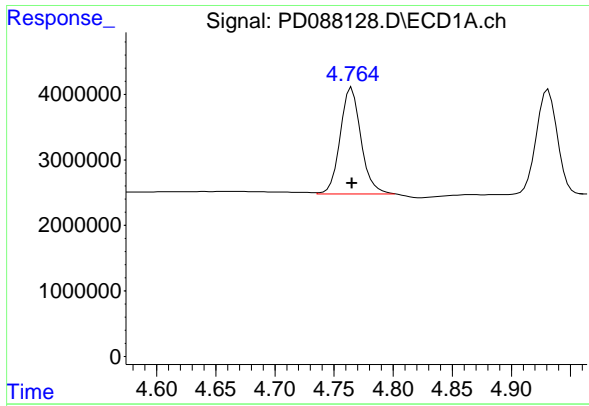
#6 beta-BHC

R.T.: 4.516 min
 Delta R.T.: 0.000 min
 Response: 8800396
 Conc: 5.57 ng/ml



#6 beta-BHC

R.T.: 4.028 min
 Delta R.T.: 0.000 min
 Response: 55407278
 Conc: 6.26 ng/ml



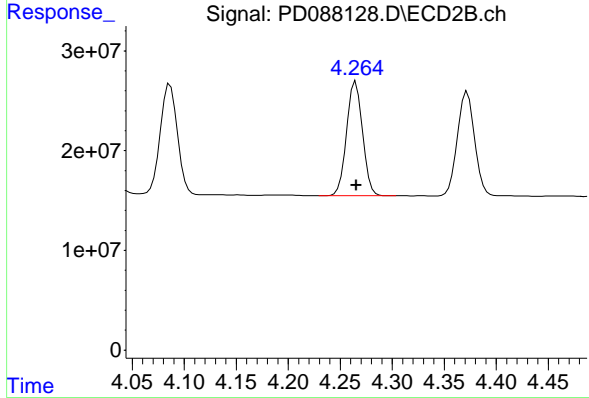
#7 delta-BHC

R.T.: 4.764 min
 Delta R.T.: -0.001 min
 Response: 19851779
 Conc: 4.87 ng/ml

Instrument :
 ECD_D
 ClientSampleId :
 PSTDICC005

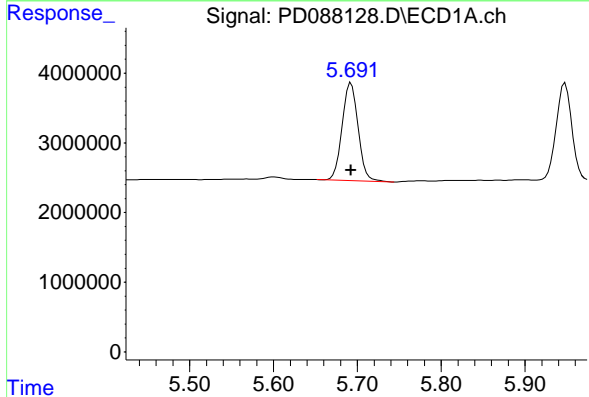
Manual Integrations
 APPROVED

Reviewed By :Abdul Mirza 04/19/2025
 Supervised By :mohammad ahmed 04/22/2025



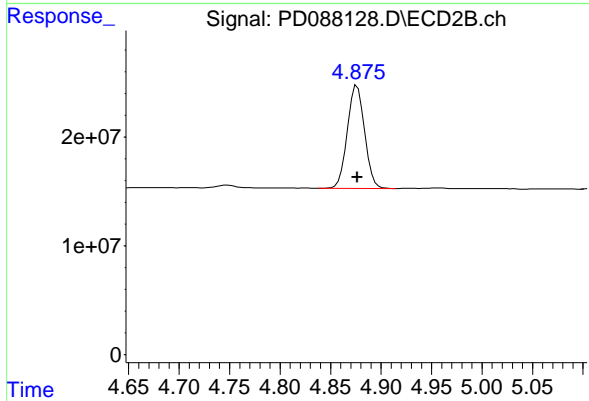
#7 delta-BHC

R.T.: 4.265 min
 Delta R.T.: 0.000 min
 Response: 122164045
 Conc: 5.97 ng/ml



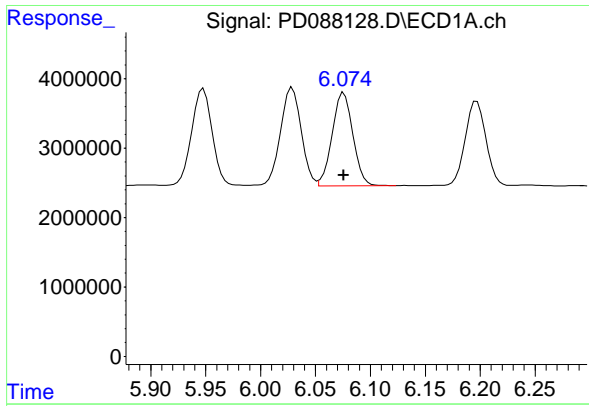
#8 Heptachlor epoxide

R.T.: 5.693 min
 Delta R.T.: 0.000 min
 Response: 18623118
 Conc: 5.34 ng/ml



#8 Heptachlor epoxide

R.T.: 4.876 min
 Delta R.T.: 0.000 min
 Response: 112883463
 Conc: 6.24 ng/ml



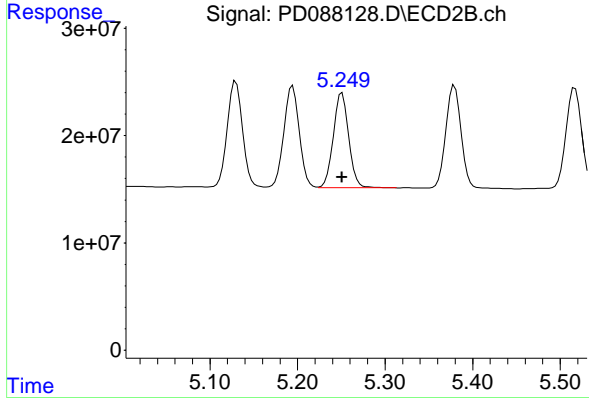
#9 Endosulfan I

R.T.: 6.076 min
 Delta R.T.: 0.000 min
 Response: 17577772
 Conc: 5.32 ng/ml

Instrument : ECD_D
 ClientSampleId : PSTDICC005

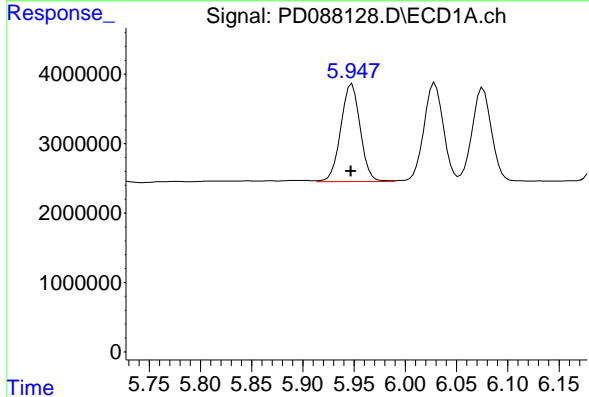
Manual Integrations
 APPROVED

Reviewed By :Abdul Mirza 04/19/2025
 Supervised By :mohammad ahmed 04/22/2025



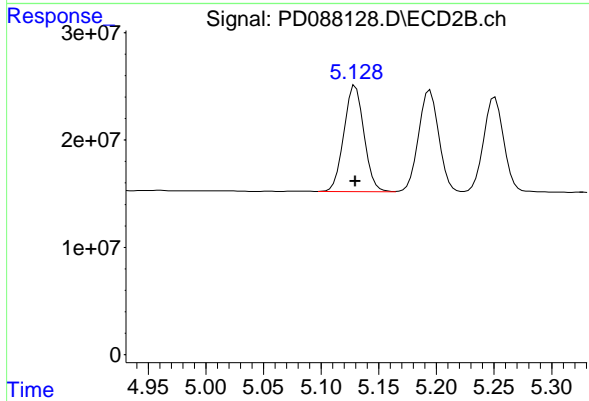
#9 Endosulfan I

R.T.: 5.251 min
 Delta R.T.: 0.000 min
 Response: 107849373
 Conc: 6.25 ng/ml



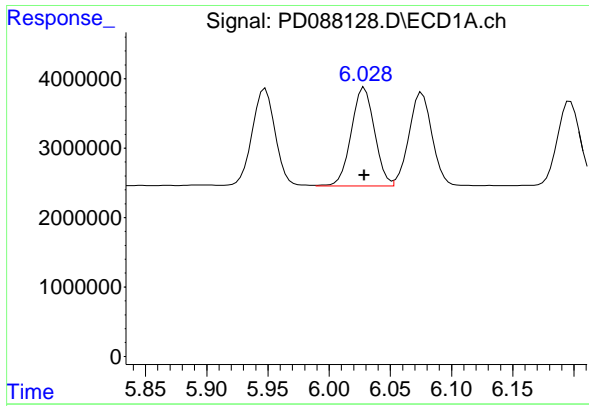
#10 gamma-Chlordane

R.T.: 5.948 min
 Delta R.T.: 0.000 min
 Response: 18576714
 Conc: 5.25 ng/ml



#10 gamma-Chlordane

R.T.: 5.130 min
 Delta R.T.: 0.000 min
 Response: 119665494
 Conc: 6.16 ng/ml



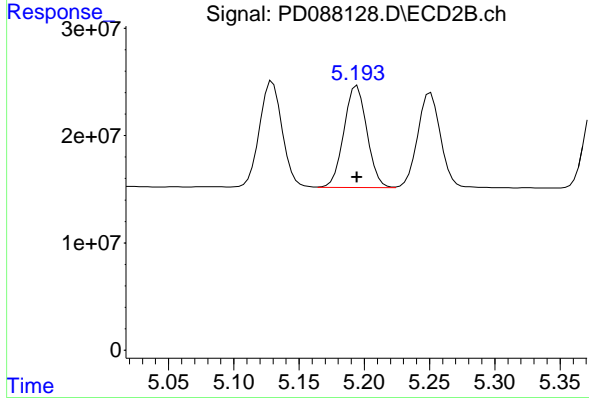
#11 alpha-Chlordane

R.T.: 6.029 min
 Delta R.T.: 0.000 min
 Response: 18782686
 Conc: 5.32 ng/ml

Instrument :
 ECD_D
 ClientSampleId :
 PSTDICC005

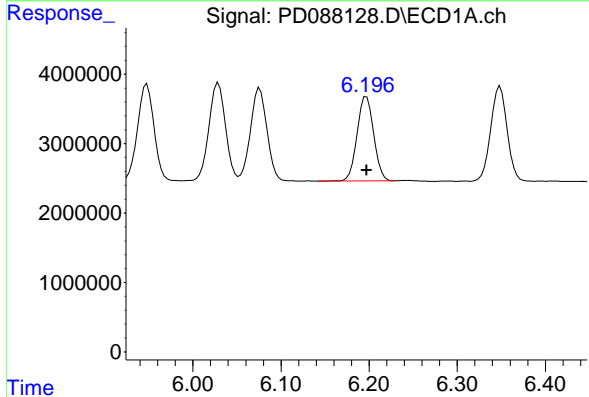
Manual Integrations
 APPROVED

Reviewed By :Abdul Mirza 04/19/2025
 Supervised By :mohammad ahmed 04/22/2025



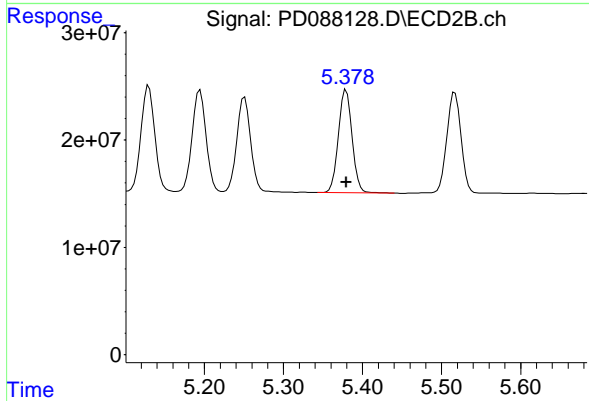
#11 alpha-Chlordane

R.T.: 5.194 min
 Delta R.T.: 0.000 min
 Response: 116305791
 Conc: 6.20 ng/ml



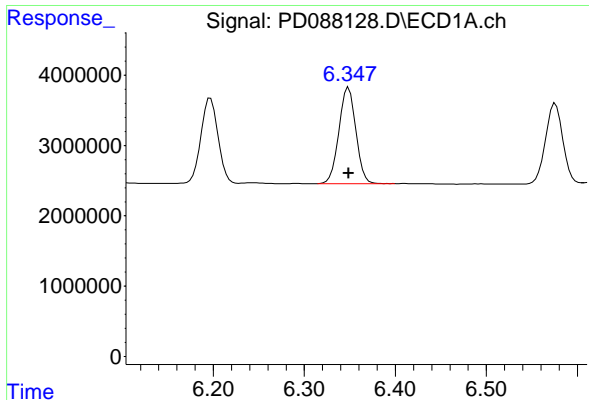
#12 4,4'-DDE

R.T.: 6.197 min
 Delta R.T.: 0.000 min
 Response: 15929607
 Conc: 4.92 ng/ml



#12 4,4'-DDE

R.T.: 5.379 min
 Delta R.T.: 0.000 min
 Response: 115450338
 Conc: 6.12 ng/ml



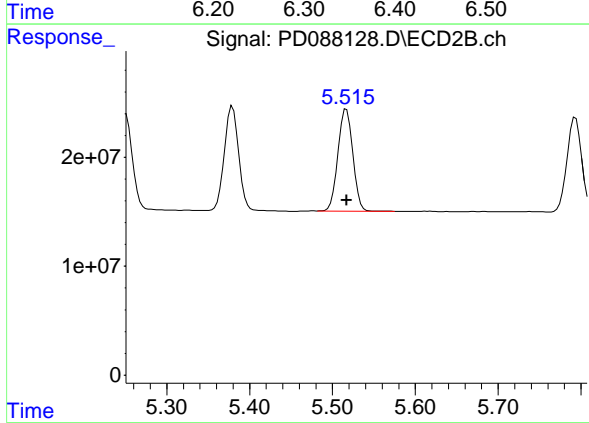
#13 Dieldrin

R.T.: 6.349 min
 Delta R.T.: 0.000 min
 Response: 17671896
 Conc: 5.01 ng/ml

Instrument : ECD_D
 ClientSampleId : PSTDICC005

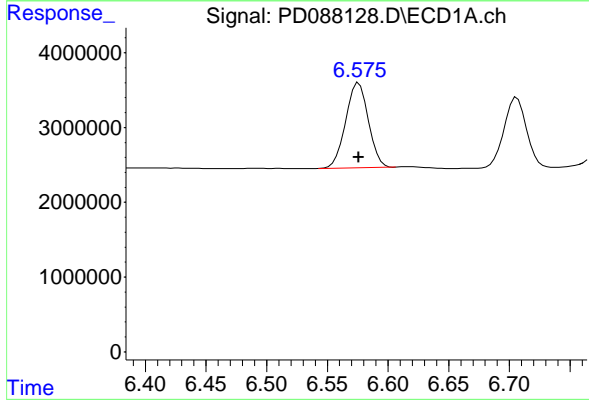
Manual Integrations
 APPROVED

Reviewed By :Abdul Mirza 04/19/2025
 Supervised By :mohammad ahmed 04/22/2025



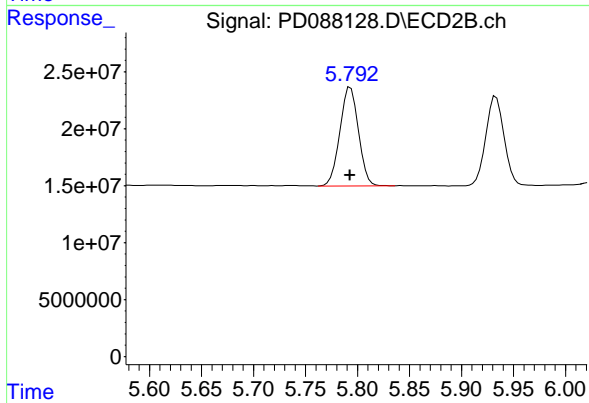
#13 Dieldrin

R.T.: 5.517 min
 Delta R.T.: 0.000 min
 Response: 116908075
 Conc: 6.11 ng/ml



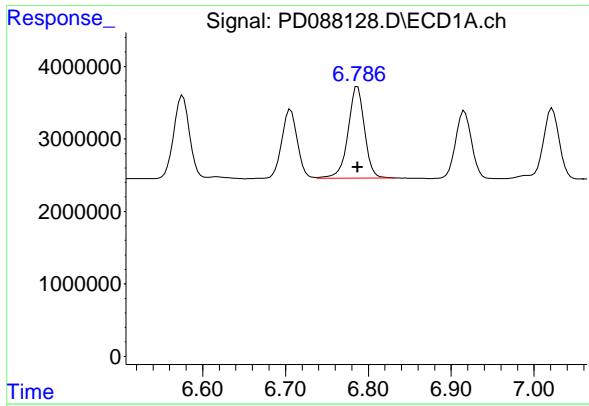
#14 Endrin

R.T.: 6.576 min
 Delta R.T.: 0.000 min
 Response: 14827210
 Conc: 5.05 ng/ml



#14 Endrin

R.T.: 5.793 min
 Delta R.T.: 0.000 min
 Response: 107870360
 Conc: 6.18 ng/ml



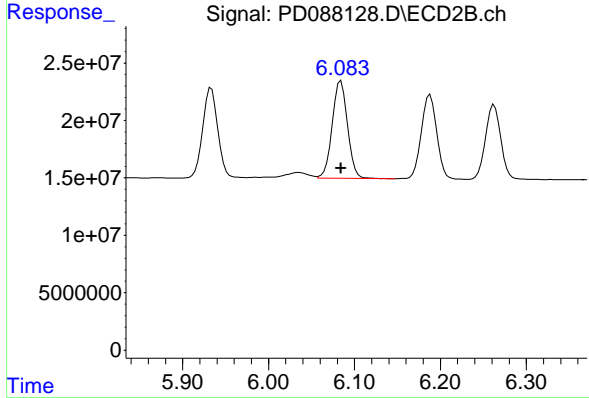
#15 Endosulfan II

R.T.: 6.787 min
 Delta R.T.: 0.000 min
 Response: 17419714
 Conc: 5.79 ng/ml

Instrument : ECD_D
 ClientSampleId : PSTDICC005

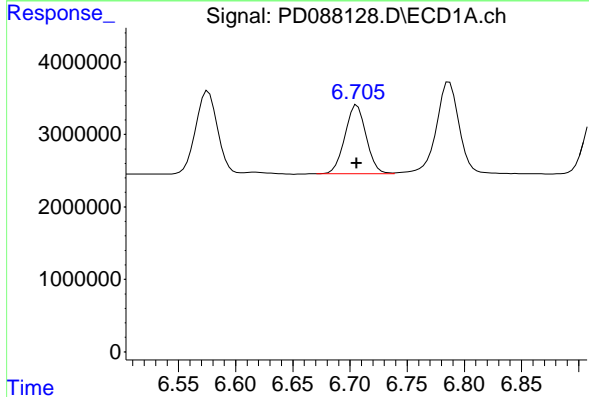
Manual Integrations
 APPROVED

Reviewed By :Abdul Mirza 04/19/2025
 Supervised By :mohammad ahmed 04/22/2025



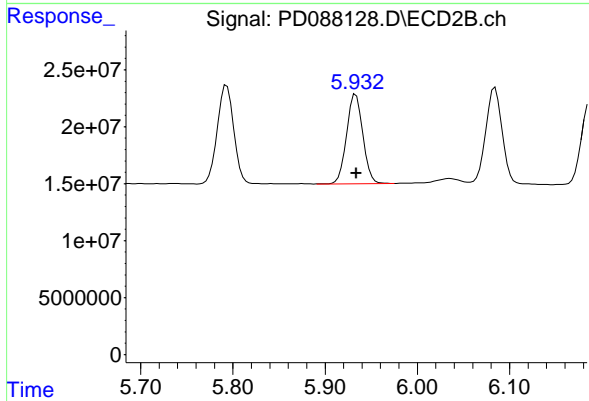
#15 Endosulfan II

R.T.: 6.084 min
 Delta R.T.: 0.000 min
 Response: 105459782
 Conc: 6.30 ng/ml



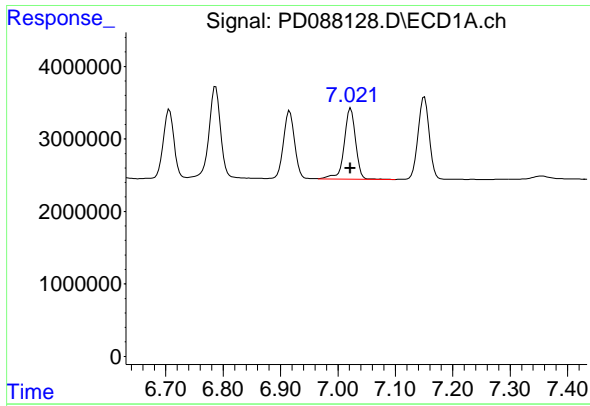
#16 4,4'-DDD

R.T.: 6.706 min
 Delta R.T.: 0.000 min
 Response: 12295875
 Conc: 4.93 ng/ml



#16 4,4'-DDD

R.T.: 5.933 min
 Delta R.T.: 0.000 min
 Response: 96096151
 Conc: 6.09 ng/ml



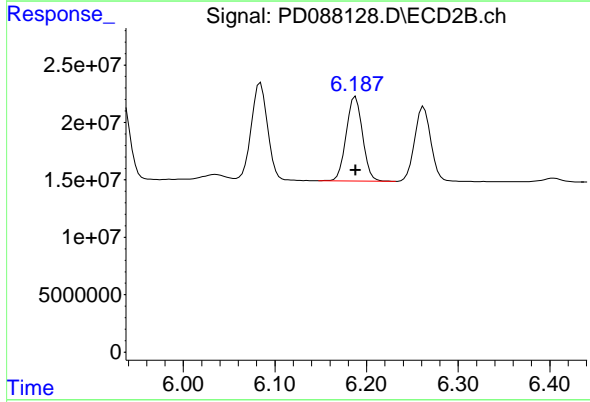
#17 4,4' -DDT

R.T.: 7.022 min
 Delta R.T.: 0.000 min
 Response: 13556042
 Conc: 4.92 ng/ml

Instrument : ECD_D
 ClientSampleId : PSTDICC005

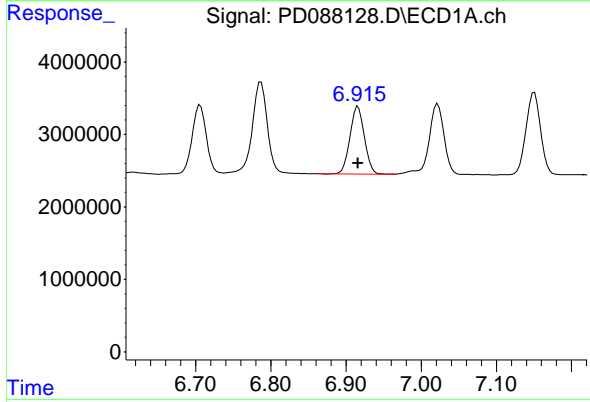
Manual Integrations
 APPROVED

Reviewed By :Abdul Mirza 04/19/2025
 Supervised By :mohammad ahmed 04/22/2025



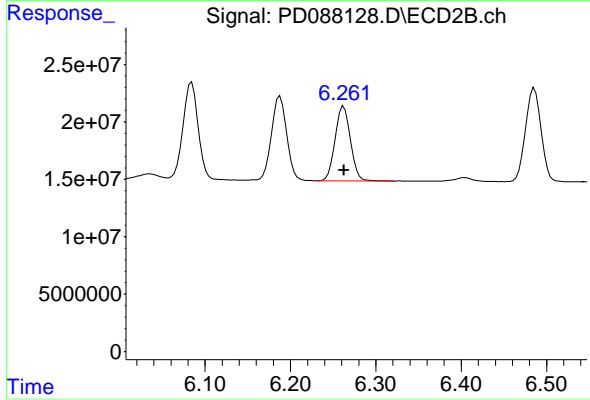
#17 4,4' -DDT

R.T.: 6.188 min
 Delta R.T.: 0.000 min
 Response: 91724476
 Conc: 5.48 ng/ml



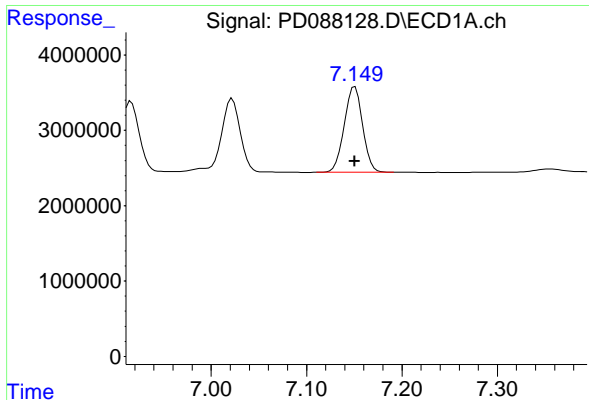
#18 Endrin aldehyde

R.T.: 6.916 min
 Delta R.T.: 0.000 min
 Response: 12478868
 Conc: 5.55 ng/ml



#18 Endrin aldehyde

R.T.: 6.262 min
 Delta R.T.: 0.000 min
 Response: 80534454
 Conc: 6.34 ng/ml



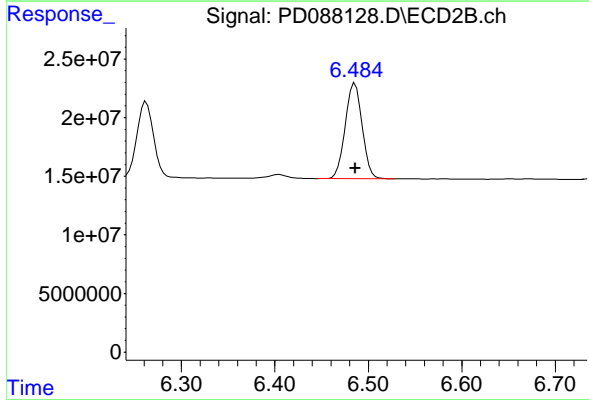
#19 Endosulfan Sulfate

R.T.: 7.151 min
 Delta R.T.: 0.000 min
 Response: 15272374
 Conc: 5.44 ng/ml

Instrument : ECD_D
 ClientSampleId : PSTDICC005

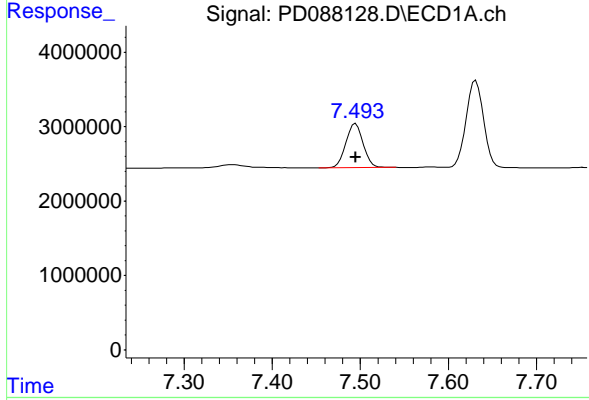
Manual Integrations
 APPROVED

Reviewed By :Abdul Mirza 04/19/2025
 Supervised By :mohammad ahmed 04/22/2025



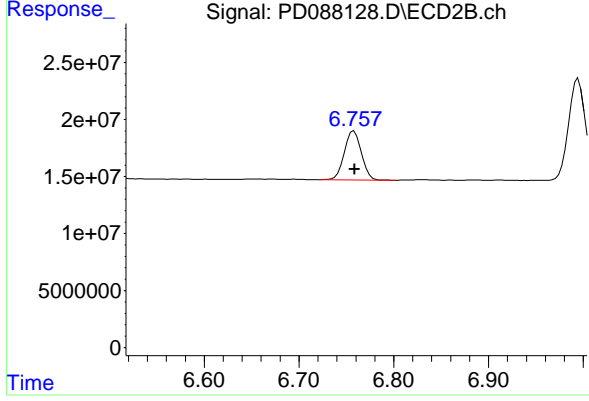
#19 Endosulfan Sulfate

R.T.: 6.486 min
 Delta R.T.: 0.000 min
 Response: 102582868
 Conc: 6.25 ng/ml



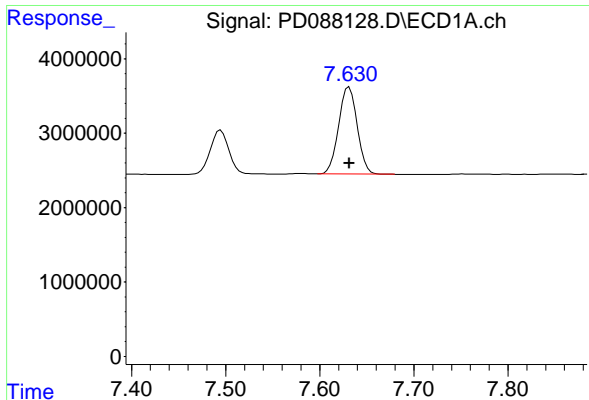
#20 Methoxychlor

R.T.: 7.495 min
 Delta R.T.: 0.000 min
 Response: 8094629
 Conc: 5.51 ng/ml



#20 Methoxychlor

R.T.: 6.758 min
 Delta R.T.: 0.000 min
 Response: 53678604
 Conc: 6.07 ng/ml



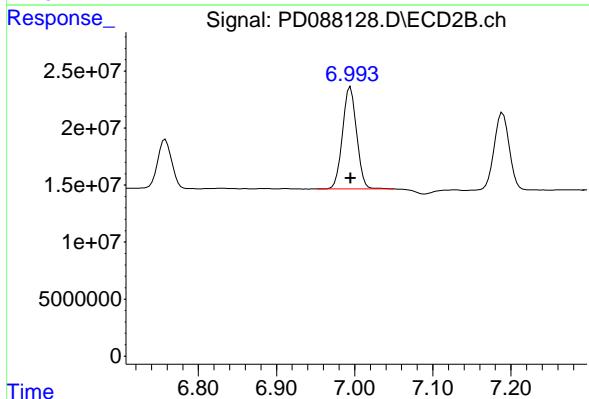
#21 Endrin ketone

R.T.: 7.631 min
 Delta R.T.: 0.000 min
 Response: 16074498
 Conc: 5.29 ng/ml

Instrument :
 ECD_D
 ClientSampleId :
 PSTDICC005

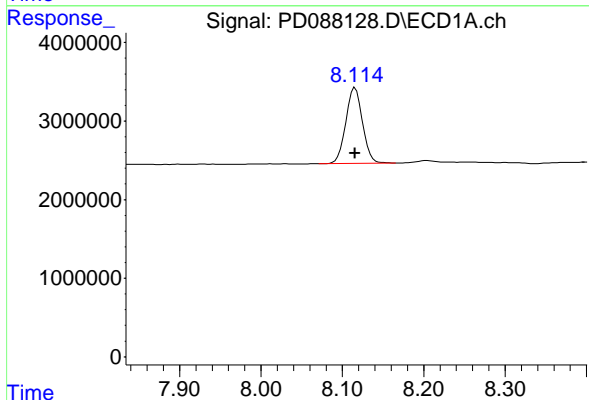
Manual Integrations
 APPROVED

Reviewed By :Abdul Mirza 04/19/2025
 Supervised By :mohammad ahmed 04/22/2025



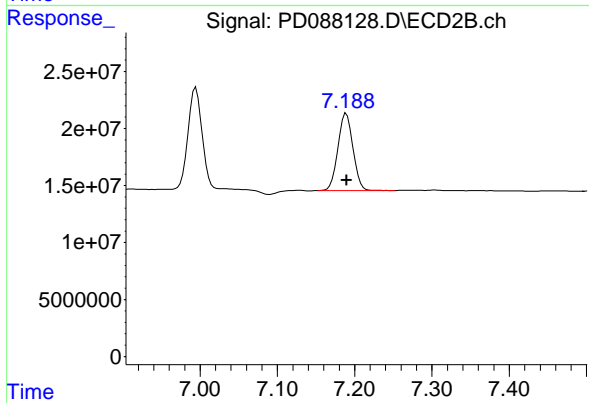
#21 Endrin ketone

R.T.: 6.995 min
 Delta R.T.: 0.000 min
 Response: 112866090
 Conc: 6.30 ng/ml



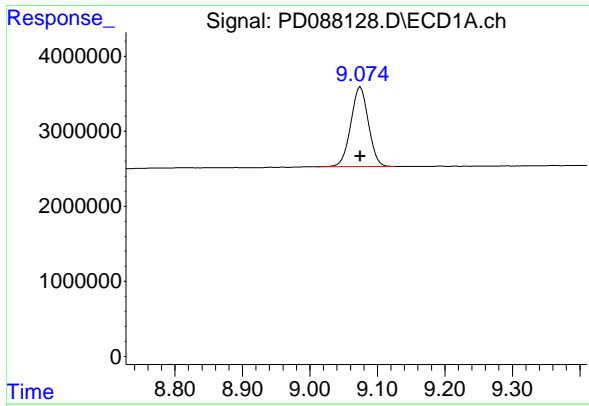
#22 Mirex

R.T.: 8.116 min
 Delta R.T.: 0.000 min
 Response: 13799458
 Conc: 6.13 ng/ml



#22 Mirex

R.T.: 7.189 min
 Delta R.T.: 0.000 min
 Response: 91589011
 Conc: 6.53 ng/ml



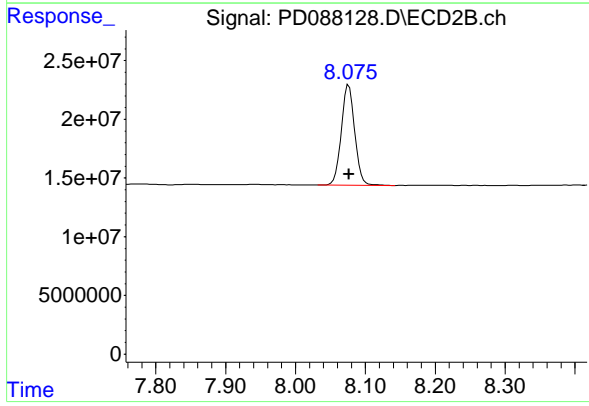
#28 Decachlorobiphenyl

R.T.: 9.075 min
 Delta R.T.: 0.000 min
 Response: 19250443
 Conc: 6.06 ng/ml

Instrument :
 ECD_D
 ClientSampleId :
 PSTDICC005

Manual Integrations
 APPROVED

Reviewed By :Abdul Mirza 04/19/2025
 Supervised By :mohammad ahmed 04/22/2025



#28 Decachlorobiphenyl

R.T.: 8.076 min
 Delta R.T.: 0.000 min
 Response: 113373951
 Conc: 6.49 ng/ml