

Data Path : Z:\pestpcbsrv\HPCHEM1\ECD\_D\Data\PD041825\  
 Data File : PD088136.D  
 Signal(s) : Signal #1: ECD1A.ch Signal #2: ECD2B.ch  
 Acq On : 18 Apr 2025 16:40  
 Operator : AR\AJ  
 Sample : PTOXICC500  
 Misc :  
 ALS Vial : 17 Sample Multiplier: 1

**Instrument :**  
 ECD\_D  
**ClientSampleId :**  
 PTOXICC500

Integration File signal 1: autoint1.e  
 Integration File signal 2: autoint2.e  
 Quant Time: Apr 19 06:17:52 2025  
 Quant Method : Z:\pestpcbsrv\HPCHEM1\ECD\_D\Method\DTX041825.M  
 Quant Title : GC Extractables  
 QLast Update : Sat Apr 19 06:16:20 2025  
 Response via : Initial Calibration  
 Integrator: ChemStation

Volume Inj. : 1 µl  
 Signal #1 Phase : ZB-MR1 Signal #2 Phase: ZB-MR2  
 Signal #1 Info : 30M x 0.32mm x 0. Signal #2 Info : 30M x 0.32mm x0.25µm

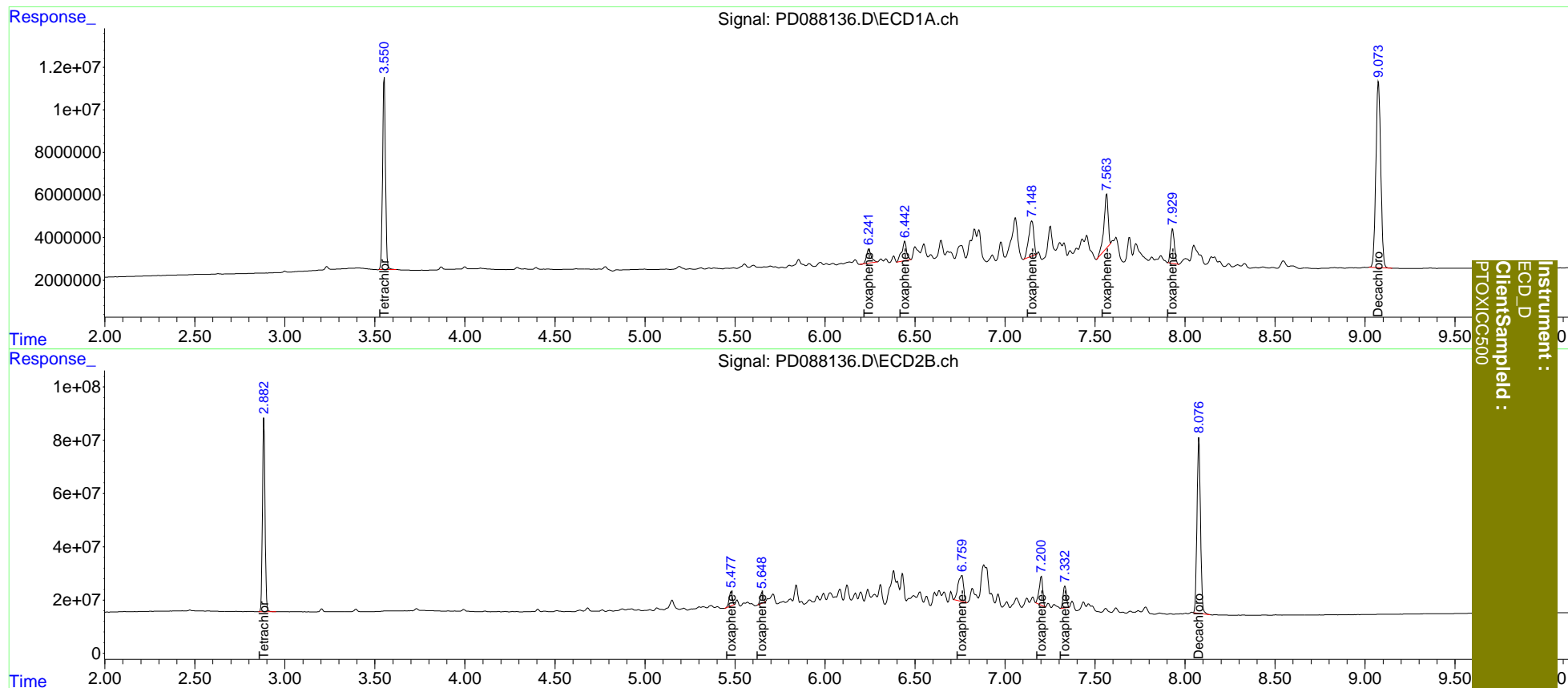
Compound	RT#1	RT#2	Resp#1	Resp#2	ng/ml	ng/ml
-----						
System Monitoring Compounds						
1) SA Tetrachlo...	3.552	2.883	101.0E6	721.8E6	50.000	50.000
7) SA Decachlor...	9.074	8.077	164.9E6	890.5E6	50.000	50.000
Target Compounds						
2) Toxaphene-1	6.243	5.479	11798963	65341019	500.000	500.000
3) Toxaphene-2	6.443	5.650	17032300	44756730	500.000	500.000
4) Toxaphene-3	7.149	6.760	32663151	208.7E6	500.000	500.000
5) Toxaphene-4	7.565	7.202	41022693	151.5E6	500.000	500.000
6) Toxaphene-5	7.931	7.333	23857581	103.9E6	500.000	500.000
-----						

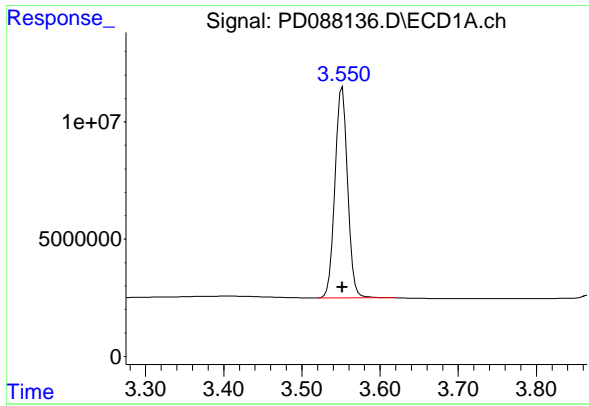
(f)=RT Delta > 1/2 Window (#)=Amounts differ by > 25% (m)=manual int.

Data Path : Z:\pestpcbsrv\HPCHEM1\ECD\_D\Data\PD041825\  
 Data File : PD088136.D  
 Signal(s) : Signal #1: ECD1A.ch Signal #2: ECD2B.ch  
 Acq On : 18 Apr 2025 16:40  
 Operator : AR\AJ  
 Sample : PTOXICC500  
 Misc :  
 ALS Vial : 17 Sample Multiplier: 1

Integration File signal 1: autoint1.e  
 Integration File signal 2: autoint2.e  
 Quant Time: Apr 19 06:17:52 2025  
 Quant Method : Z:\pestpcbsrv\HPCHEM1\ECD\_D\Method\DTX041825.M  
 Quant Title : GC Extractables  
 QLast Update : Sat Apr 19 06:16:20 2025  
 Response via : Initial Calibration  
 Integrator: ChemStation

Volume Inj. : 1 µl  
 Signal #1 Phase : ZB-MR1 Signal #2 Phase: ZB-MR2  
 Signal #1 Info : 30M x 0.32mm x 0. Signal #2 Info : 30M x 0.32mm x0.25µm

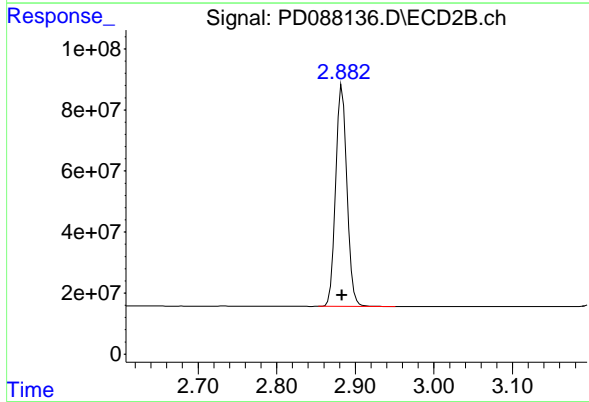




#1 Tetrachloro-m-xylene

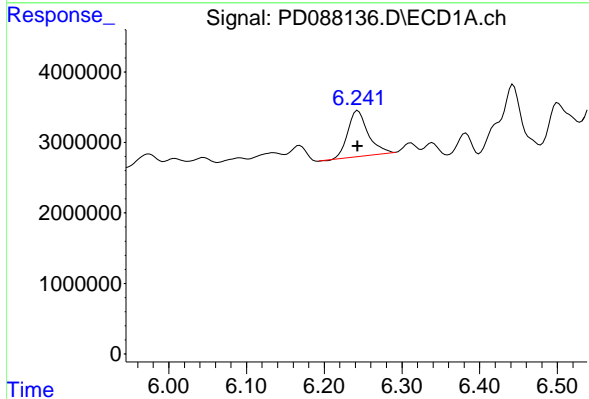
R.T.: 3.552 min  
 Delta R.T.: 0.000 min  
 Response: 101048762  
 Conc: 50.00 ng/ml

Instrument :  
 ECD\_D  
 ClientSampleId :  
 PTOXICC500



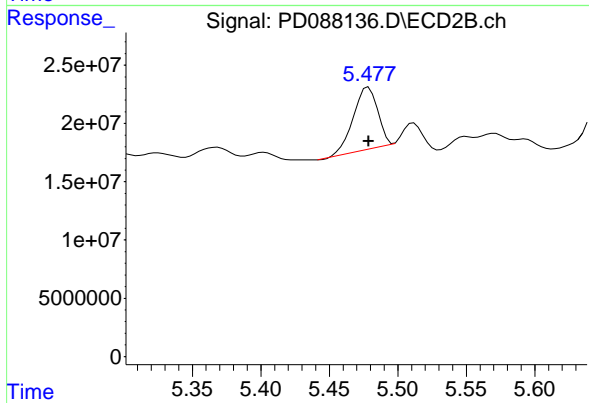
#1 Tetrachloro-m-xylene

R.T.: 2.883 min  
 Delta R.T.: 0.000 min  
 Response: 721814144  
 Conc: 50.00 ng/ml



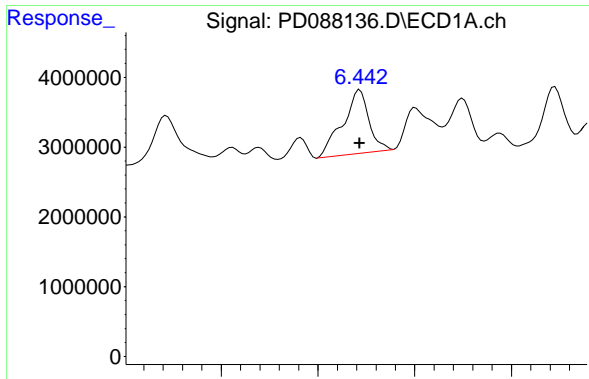
#2 Toxaphene-1

R.T.: 6.243 min  
 Delta R.T.: 0.000 min  
 Response: 11798963  
 Conc: 500.00 ng/ml



#2 Toxaphene-1

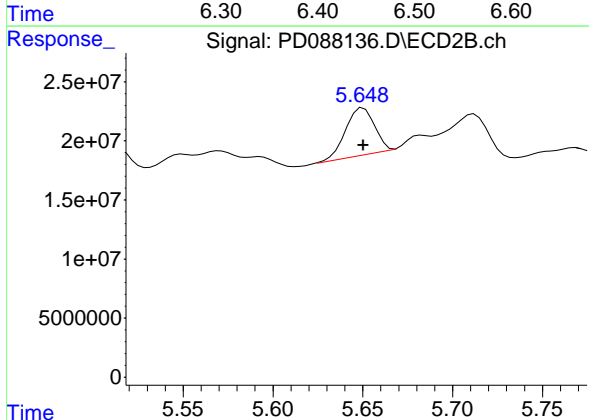
R.T.: 5.479 min  
 Delta R.T.: 0.000 min  
 Response: 65341019  
 Conc: 500.00 ng/ml



#3 Toxaphene-2

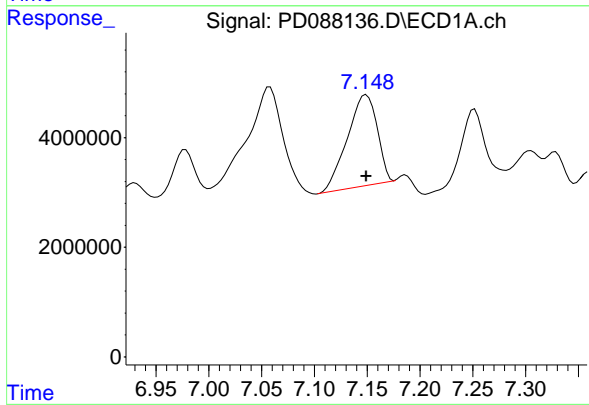
R.T.: 6.443 min  
 Delta R.T.: 0.000 min  
 Response: 17032300  
 Conc: 500.00 ng/ml

Instrument :  
 ECD\_D  
 ClientSampleId :  
 PTOXICC500



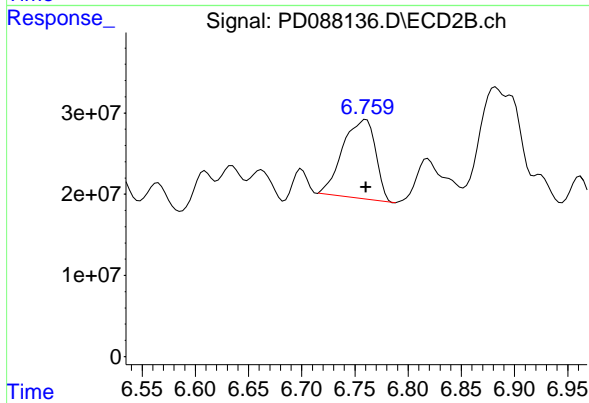
#3 Toxaphene-2

R.T.: 5.650 min  
 Delta R.T.: 0.000 min  
 Response: 44756730  
 Conc: 500.00 ng/ml



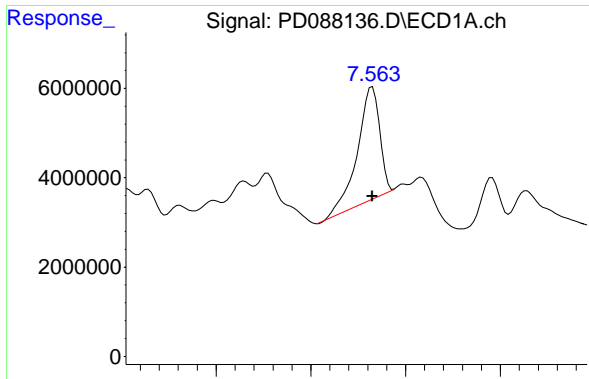
#4 Toxaphene-3

R.T.: 7.149 min  
 Delta R.T.: 0.000 min  
 Response: 32663151  
 Conc: 500.00 ng/ml



#4 Toxaphene-3

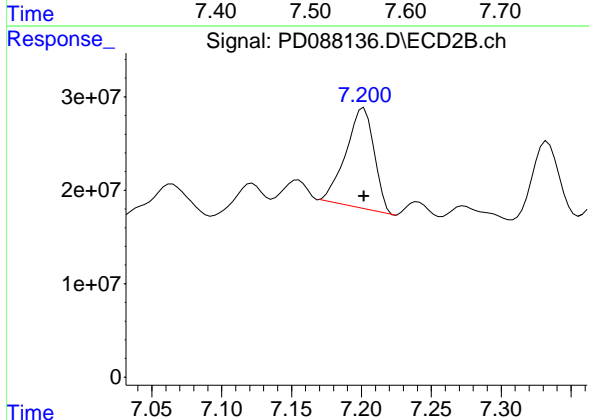
R.T.: 6.760 min  
 Delta R.T.: 0.000 min  
 Response: 208675981  
 Conc: 500.00 ng/ml



#5 Toxaphene-4

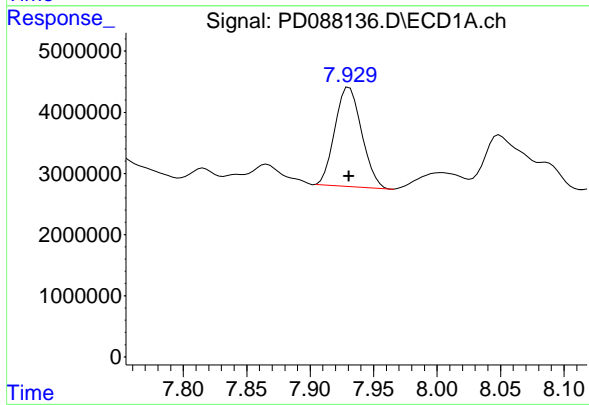
R.T.: 7.565 min  
Delta R.T.: 0.000 min  
Response: 41022693  
Conc: 500.00 ng/ml

Instrument :  
ECD\_D  
ClientSampleId :  
PTOXICC500



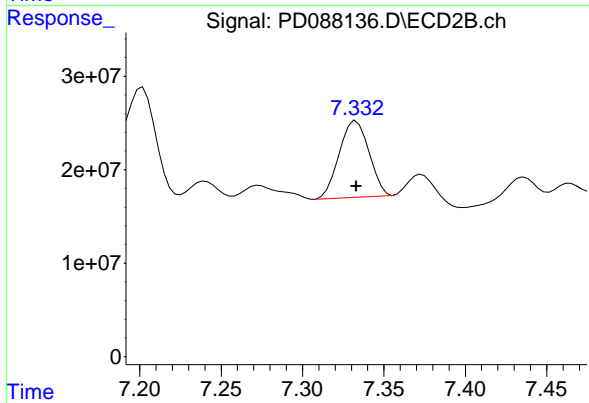
#5 Toxaphene-4

R.T.: 7.202 min  
Delta R.T.: 0.000 min  
Response: 151455448  
Conc: 500.00 ng/ml



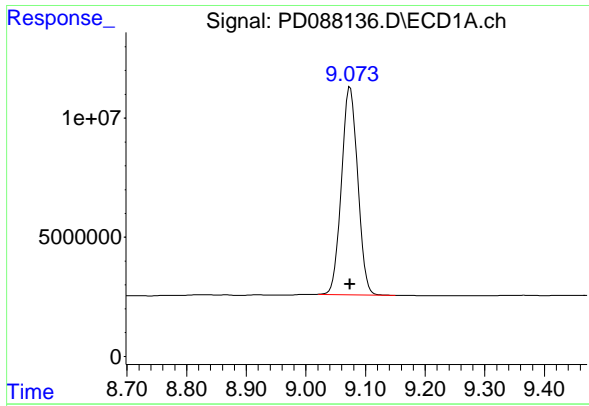
#6 Toxaphene-5

R.T.: 7.931 min  
Delta R.T.: 0.000 min  
Response: 23857581  
Conc: 500.00 ng/ml



#6 Toxaphene-5

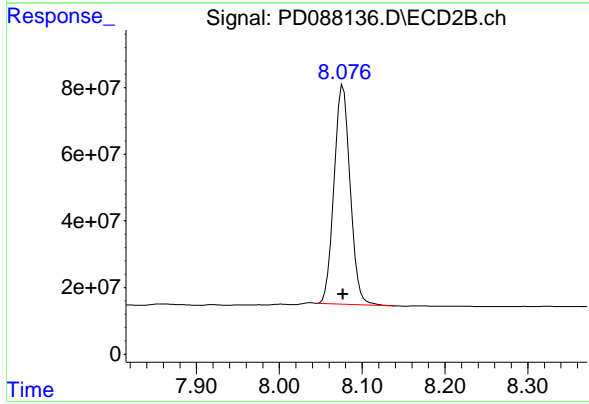
R.T.: 7.333 min  
Delta R.T.: 0.000 min  
Response: 103880468  
Conc: 500.00 ng/ml



#7 Decachlorobiphenyl

R.T.: 9.074 min  
Delta R.T.: 0.000 min  
Response: 164915640  
Conc: 50.00 ng/ml

Instrument :  
ECD\_D  
ClientSampleId :  
PTOXICC500



#7 Decachlorobiphenyl

R.T.: 8.077 min  
Delta R.T.: 0.000 min  
Response: 890483655  
Conc: 50.00 ng/ml