

Data Path : Z:\pestpcbsrv\HPCHEM1\ECD_D\Data\PD041825\
 Data File : PD088143.D
 Signal(s) : Signal #1: ECD1A.ch Signal #2: ECD2B.ch
 Acq On : 18 Apr 2025 18:16
 Operator : AR\AJ
 Sample : PEM
 Misc :
 ALS Vial : 3 Sample Multiplier: 1

Instrument :
 ECD_D
ClientSampleId :
 PEM

Manual Integrations
APPROVED
 Reviewed By :Abdul Mirza 04/19/2025
 Supervised By :mohammad ahmed 04/22/2025

Integration File signal 1: autoint1.e
 Integration File signal 2: autoint2.e
 Quant Time: Apr 19 06:42:27 2025
 Quant Method : Z:\pestpcbsrv\HPCHEM1\ECD_D\Method\PD041825.M
 Quant Title : GC Extractables
 QLast Update : Sat Apr 19 06:32:27 2025
 Response via : Initial Calibration
 Integrator: ChemStation

Volume Inj. : 1 µl
 Signal #1 Phase : ZB-MR1 Signal #2 Phase: ZB-MR2
 Signal #1 Info : 30M x 0.32mm x0.5 Signal #2 Info : 30M x 0.32mm x 0.25µm

Compound	RT#1	RT#2	Resp#1	Resp#2	ng/ml	ng/ml

System Monitoring Compounds						
1) SA Tetrachlo...	3.552	2.883	44083911	330.3E6	22.071	22.590
28) SA Decachlor...	9.075	8.076	78825629	433.3E6	23.828	23.449
Target Compounds						
2) A alpha-BHC	4.001	3.396	44586718	274.6E6	10.340	12.011
3) MA gamma-BHC...	4.332	3.732	44686277	256.9E6	10.671	11.929
6) B beta-BHC	4.516	4.028	19029033	117.4E6	11.722	12.681
14) MA Endrin	6.576	5.792	158.4E6	927.8E6	53.113	50.974
16) A 4,4'-DDD	6.705	5.935	1425260	7491226	0.567m	0.457
17) MA 4,4'-DDT	7.023	6.187	314.9E6	1794.8E6	113.365	105.476
18) B Endrin al...	6.914	6.262	3499904	29555088	1.516m	2.222 #
20) A Methoxychlor	7.495	6.758	405.6E6	2019.2E6	270.467	221.383
21) B Endrin ke...	7.632	6.994	5660856	47711568	1.834	2.551 #

(f)=RT Delta > 1/2 Window (#)=Amounts differ by > 25% (m)=manual int.

Data Path : Z:\pestpcbsrv\HPCHEM1\ECD_D\Data\PD041825\
 Data File : PD088143.D
 Signal(s) : Signal #1: ECD1A.ch Signal #2: ECD2B.ch
 Acq On : 18 Apr 2025 18:16
 Operator : AR\AJ
 Sample : PEM
 Misc :
 ALS Vial : 3 Sample Multiplier: 1

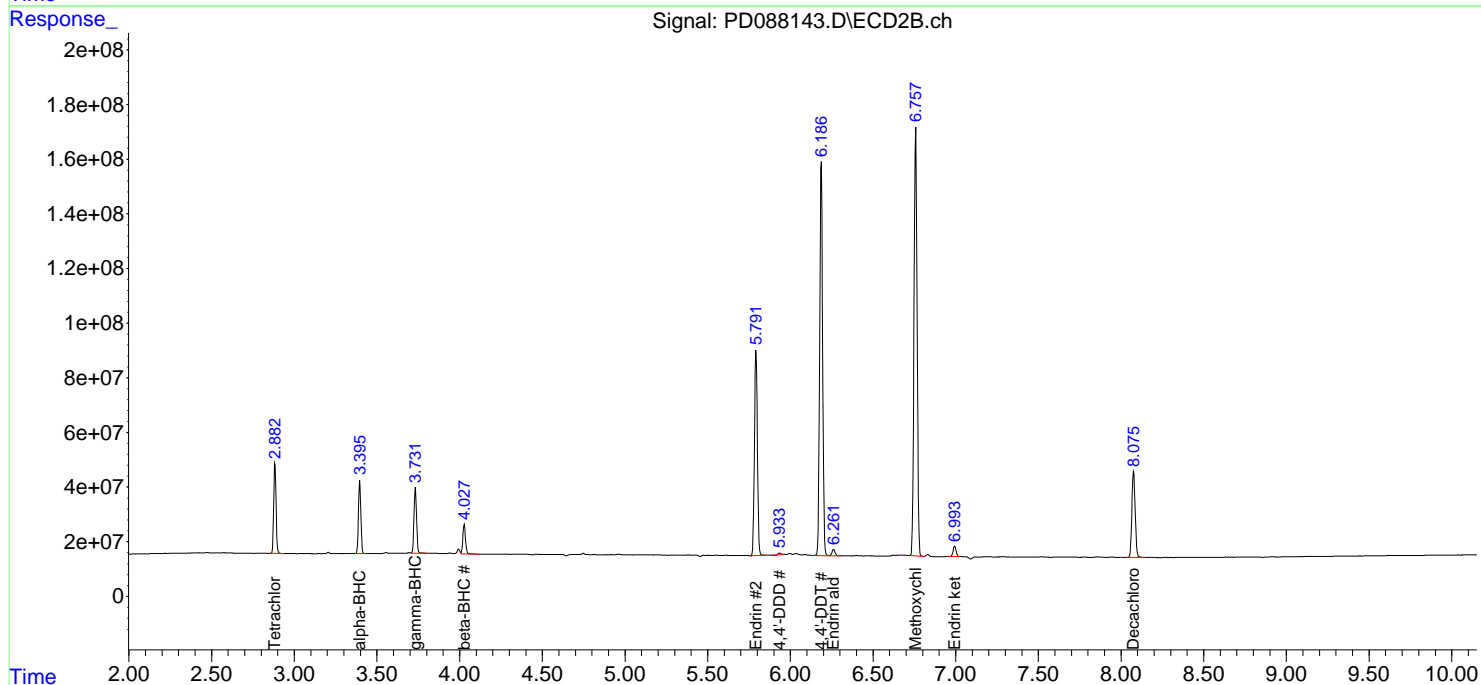
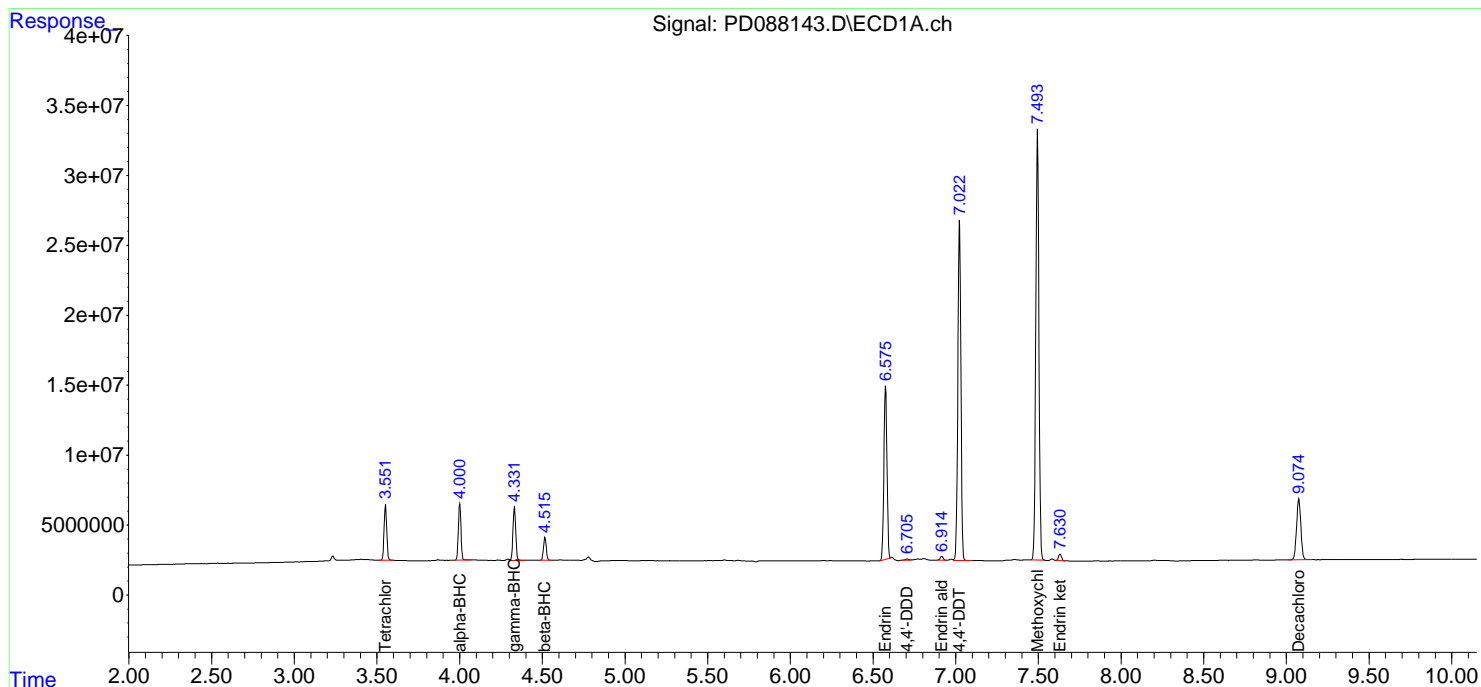
Instrument :
 ECD_D
ClientSampleId :
 PEM

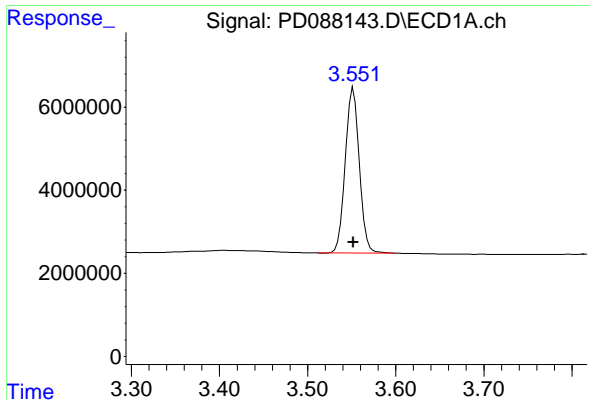
Manual Integrations
APPROVED

Reviewed By :Abdul Mirza 04/19/2025
 Supervised By :mohammad ahmed 04/22/2025

Integration File signal 1: autoint1.e
 Integration File signal 2: autoint2.e
 Quant Time: Apr 19 06:42:27 2025
 Quant Method : Z:\pestpcbsrv\HPCHEM1\ECD_D\Method\PD041825.M
 Quant Title : GC Extractables
 QLast Update : Sat Apr 19 06:32:27 2025
 Response via : Initial Calibration
 Integrator: ChemStation

Volume Inj. : 1 µl
 Signal #1 Phase : ZB-MR1 Signal #2 Phase: ZB-MR2
 Signal #1 Info : 30M x 0.32mm x0.5 Signal #2 Info : 30M x 0.32mm x 0.25µm





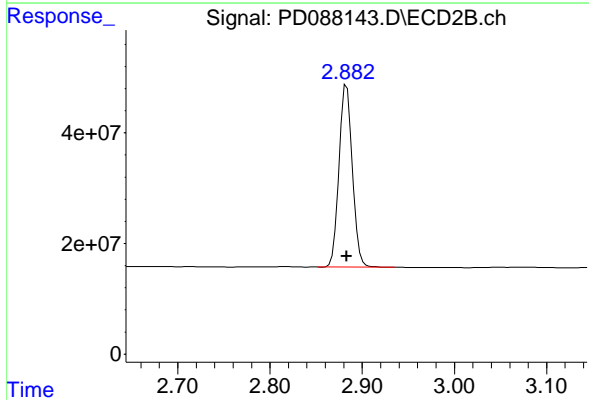
#1 Tetrachloro-m-xylene

R.T.: 3.552 min
 Delta R.T.: 0.000 min
 Response: 44083911
 Conc: 22.07 ng/ml

Instrument : ECD_D
 ClientSampleId : PEM

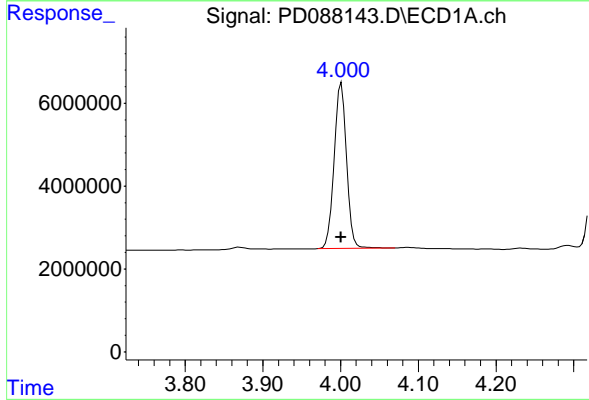
Manual Integrations
 APPROVED

Reviewed By :Abdul Mirza 04/19/2025
 Supervised By :mohammad ahmed 04/22/2025



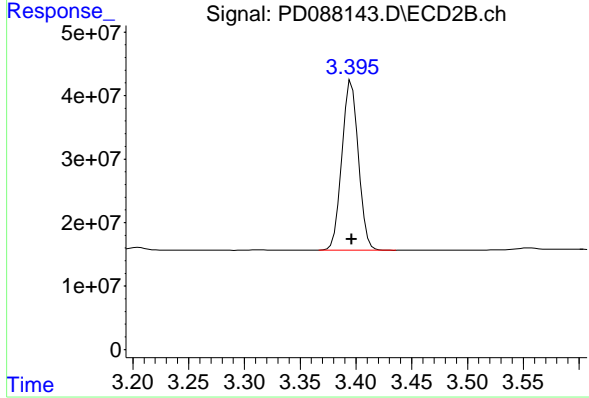
#1 Tetrachloro-m-xylene

R.T.: 2.883 min
 Delta R.T.: 0.000 min
 Response: 330303906
 Conc: 22.59 ng/ml



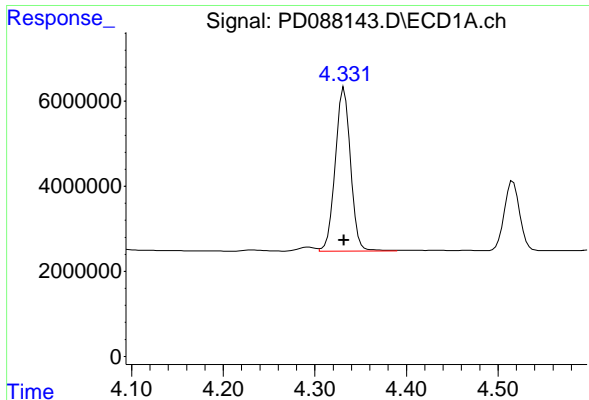
#2 alpha-BHC

R.T.: 4.001 min
 Delta R.T.: 0.000 min
 Response: 44586718
 Conc: 10.34 ng/ml



#2 alpha-BHC

R.T.: 3.396 min
 Delta R.T.: 0.000 min
 Response: 274595847
 Conc: 12.01 ng/ml



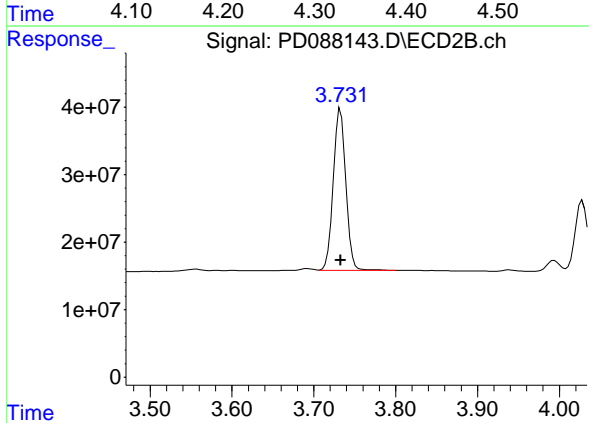
#3 gamma-BHC (Lindane)

R.T.: 4.332 min
 Delta R.T.: 0.000 min
 Response: 44686277
 Conc: 10.67 ng/ml

Instrument :
 ECD_D
 ClientSampleId :
 PEM

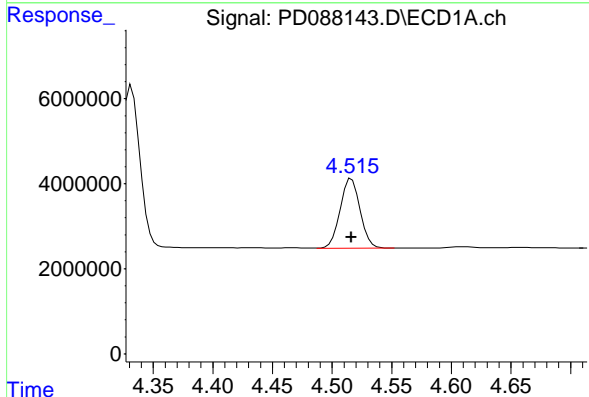
Manual Integrations
 APPROVED

Reviewed By :Abdul Mirza 04/19/2025
 Supervised By :mohammad ahmed 04/22/2025



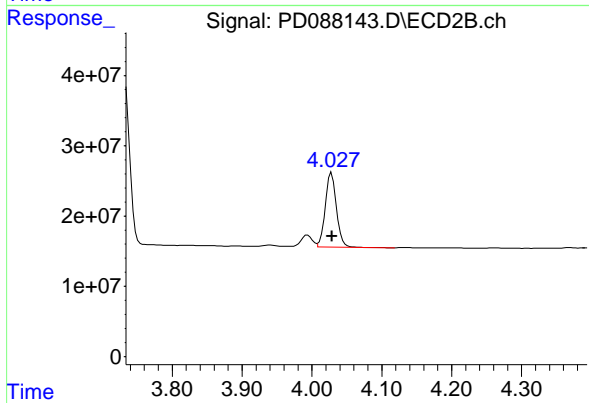
#3 gamma-BHC (Lindane)

R.T.: 3.732 min
 Delta R.T.: 0.000 min
 Response: 256941272
 Conc: 11.93 ng/ml



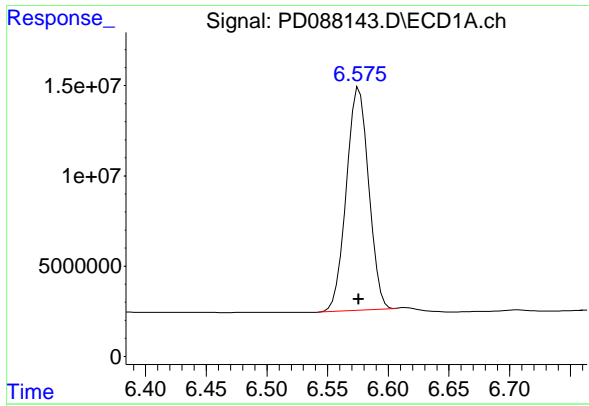
#6 beta-BHC

R.T.: 4.516 min
 Delta R.T.: 0.000 min
 Response: 19029033
 Conc: 11.72 ng/ml



#6 beta-BHC

R.T.: 4.028 min
 Delta R.T.: 0.000 min
 Response: 117353815
 Conc: 12.68 ng/ml



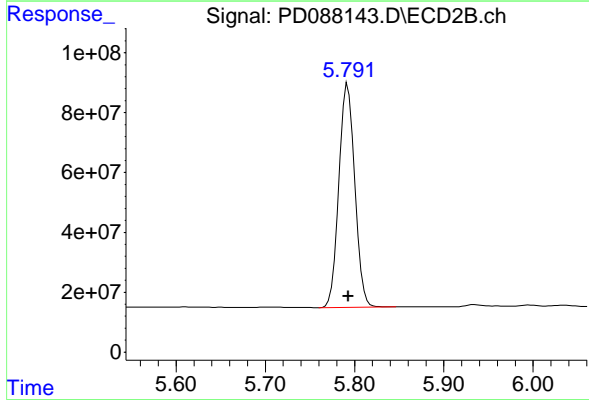
#14 Endrin

R.T.: 6.576 min
 Delta R.T.: 0.000 min
 Response: 158413170
 Conc: 53.11 ng/ml

Instrument :
 ECD_D
 ClientSampleId :
 PEM

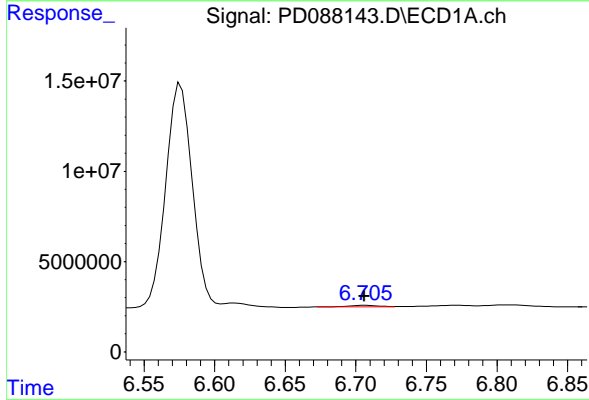
Manual Integrations
 APPROVED

Reviewed By :Abdul Mirza 04/19/2025
 Supervised By :mohammad ahmed 04/22/2025



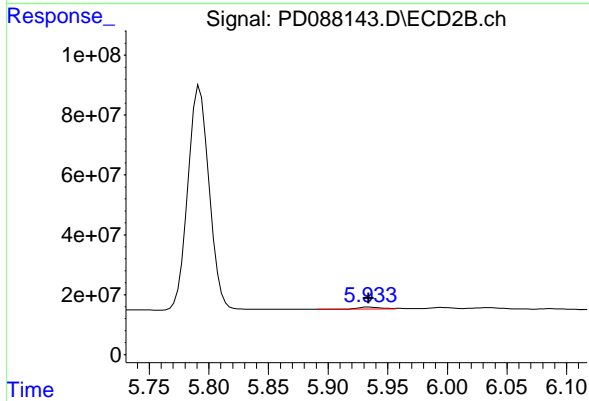
#14 Endrin

R.T.: 5.792 min
 Delta R.T.: 0.000 min
 Response: 927839797
 Conc: 50.97 ng/ml



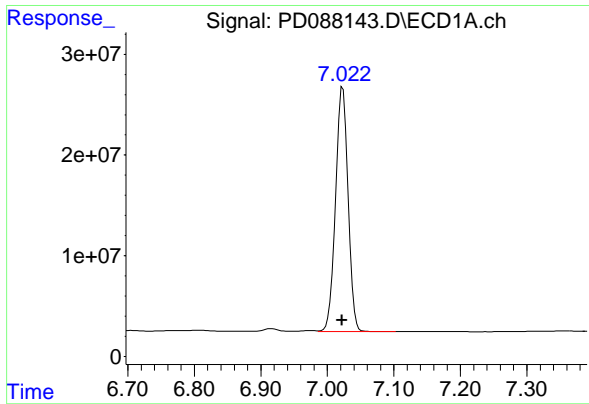
#16 4,4'-DDD

R.T.: 6.705 min
 Delta R.T.: 0.000 min
 Response: 1425260
 Conc: 0.57 ng/ml m



#16 4,4'-DDD

R.T.: 5.935 min
 Delta R.T.: 0.000 min
 Response: 7491226
 Conc: 0.46 ng/ml



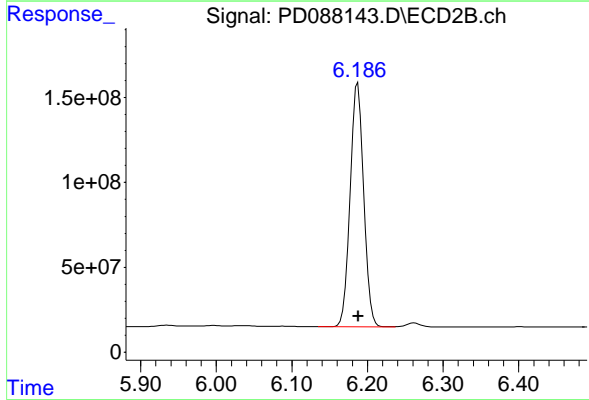
#17 4,4' -DDT

R.T.: 7.023 min
 Delta R.T.: 0.001 min
 Response: 314874843
 Conc: 113.36 ng/ml

Instrument :
 ECD_D
 ClientSampleId :
 PEM

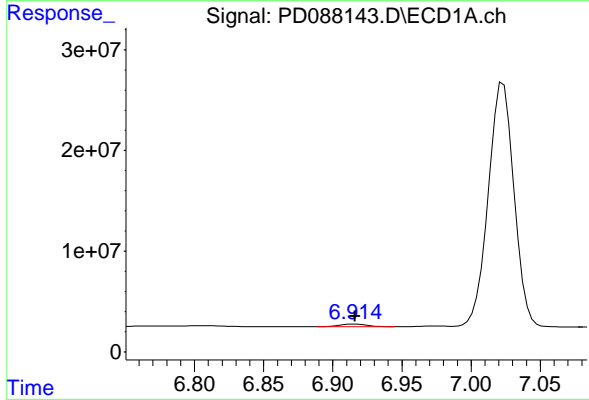
Manual Integrations
 APPROVED

Reviewed By :Abdul Mirza 04/19/2025
 Supervised By :mohammad ahmed 04/22/2025



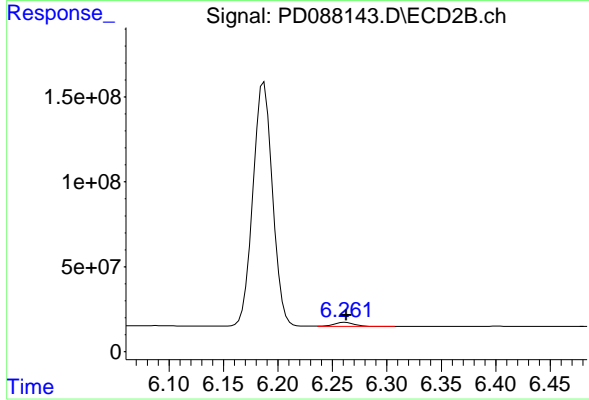
#17 4,4' -DDT

R.T.: 6.187 min
 Delta R.T.: 0.000 min
 Response: 1794829863
 Conc: 105.48 ng/ml



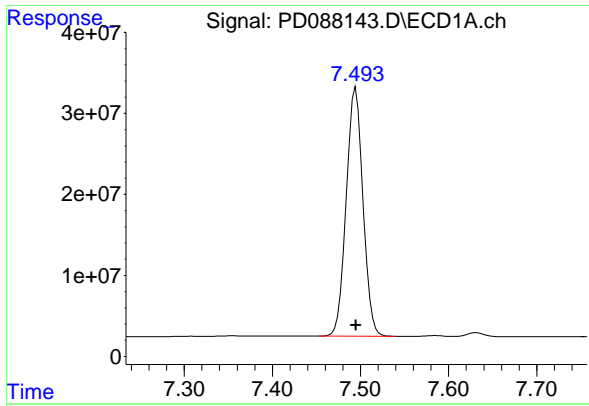
#18 Endrin aldehyde

R.T.: 6.914 min
 Delta R.T.: -0.002 min
 Response: 3499904
 Conc: 1.52 ng/ml m



#18 Endrin aldehyde

R.T.: 6.262 min
 Delta R.T.: 0.000 min
 Response: 29555088
 Conc: 2.22 ng/ml



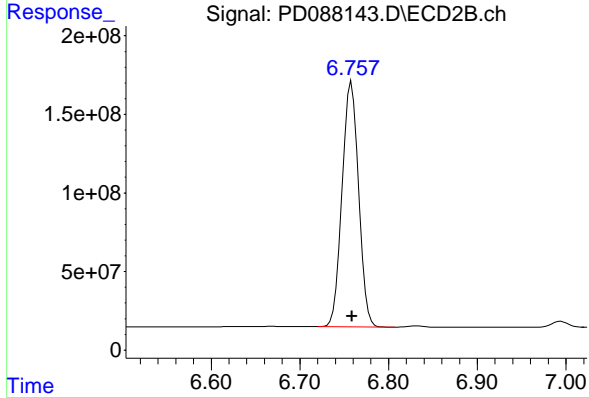
#20 Methoxychlor

R.T.: 7.495 min
 Delta R.T.: 0.000 min
 Response: 405577319
 Conc: 270.47 ng/ml

Instrument :
 ECD_D
 ClientSampleId :
 PEM

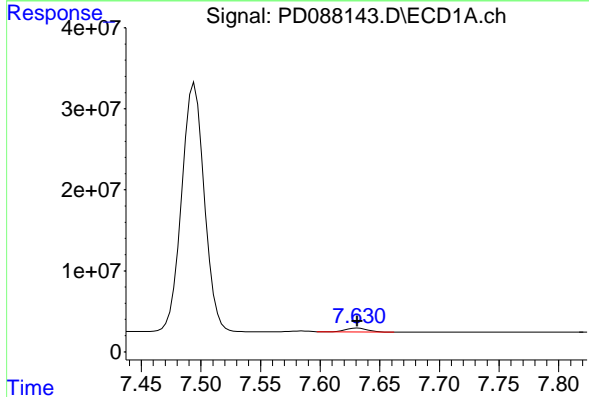
Manual Integrations
 APPROVED

Reviewed By :Abdul Mirza 04/19/2025
 Supervised By :mohammad ahmed 04/22/2025



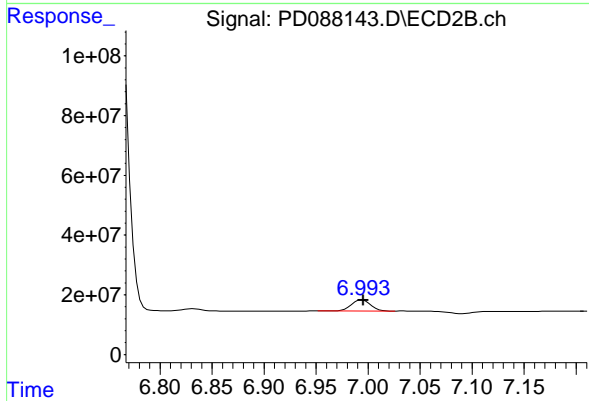
#20 Methoxychlor

R.T.: 6.758 min
 Delta R.T.: 0.000 min
 Response: 2019249497
 Conc: 221.38 ng/ml



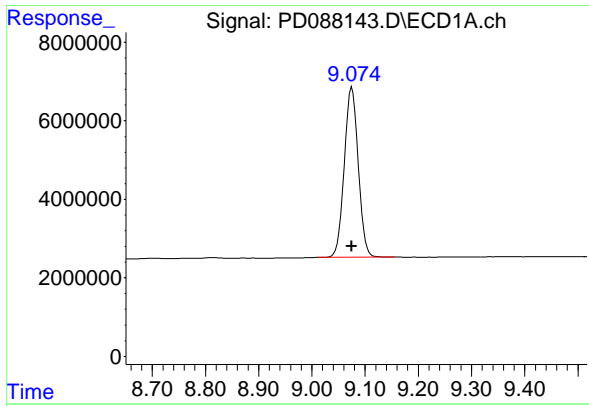
#21 Endrin ketone

R.T.: 7.632 min
 Delta R.T.: 0.000 min
 Response: 5660856
 Conc: 1.83 ng/ml



#21 Endrin ketone

R.T.: 6.994 min
 Delta R.T.: 0.000 min
 Response: 47711568
 Conc: 2.55 ng/ml



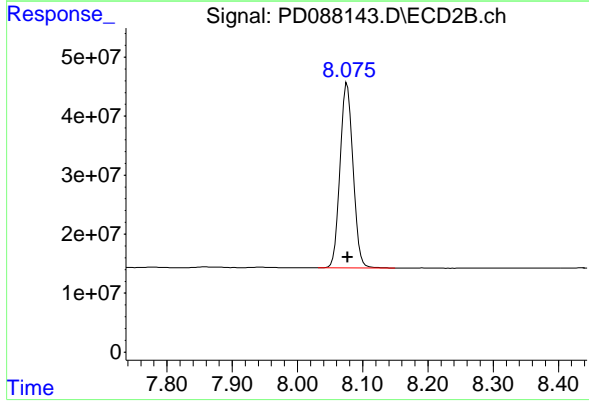
#28 Decachlorobiphenyl

R.T.: 9.075 min
 Delta R.T.: 0.000 min
 Response: 78825629
 Conc: 23.83 ng/ml

Instrument :
 ECD_D
 ClientSampleId :
 PEM

Manual Integrations
 APPROVED

Reviewed By :Abdul Mirza 04/19/2025
 Supervised By :mohammad ahmed 04/22/2025



#28 Decachlorobiphenyl

R.T.: 8.076 min
 Delta R.T.: 0.000 min
 Response: 433328823
 Conc: 23.45 ng/ml