

Data Path : Z:\pestpcbsrv\HPCHEM1\ECD_S\Data\PS051425\
 Data File : PS030205.D
 Signal(s) : Signal #1: ECD1A.ch Signal #2: ECD2B.ch
 Acq On : 14 May 2025 23:54
 Operator : AR\AJ
 Sample : Q2001-07
 Misc :
 ALS Vial : 34 Sample Multiplier: 1

Instrument :
 ECD_S
ClientSampleId :
 WC-A1-05-C

Integration File signal 1: autoint1.e
 Integration File signal 2: autoint2.e
 Quant Time: May 15 06:41:47 2025
 Quant Method : Z:\pestpcbsrv\HPCHEM1\ECD_S\Method\PS051225.M
 Quant Title : 8080.M
 QLast Update : Mon May 12 14:29:24 2025
 Response via : Initial Calibration
 Integrator: ChemStation

Volume Inj. : 1 µl
 Signal #1 Phase : ZB-MR1 Signal #2 Phase: ZB-MR2
 Signal #1 Info : 30M x 0.32mm x0.5 Signal #2 Info : 30M x 0.32mm x 0.25µm

Compound	RT#1	RT#2	Resp#1	Resp#2	ng/ml	ng/ml

System Monitoring Compounds						
4) S 2,4-DCAA	6.933	7.452	1326.1E6	366.4E6	465.649	457.922

Target Compounds

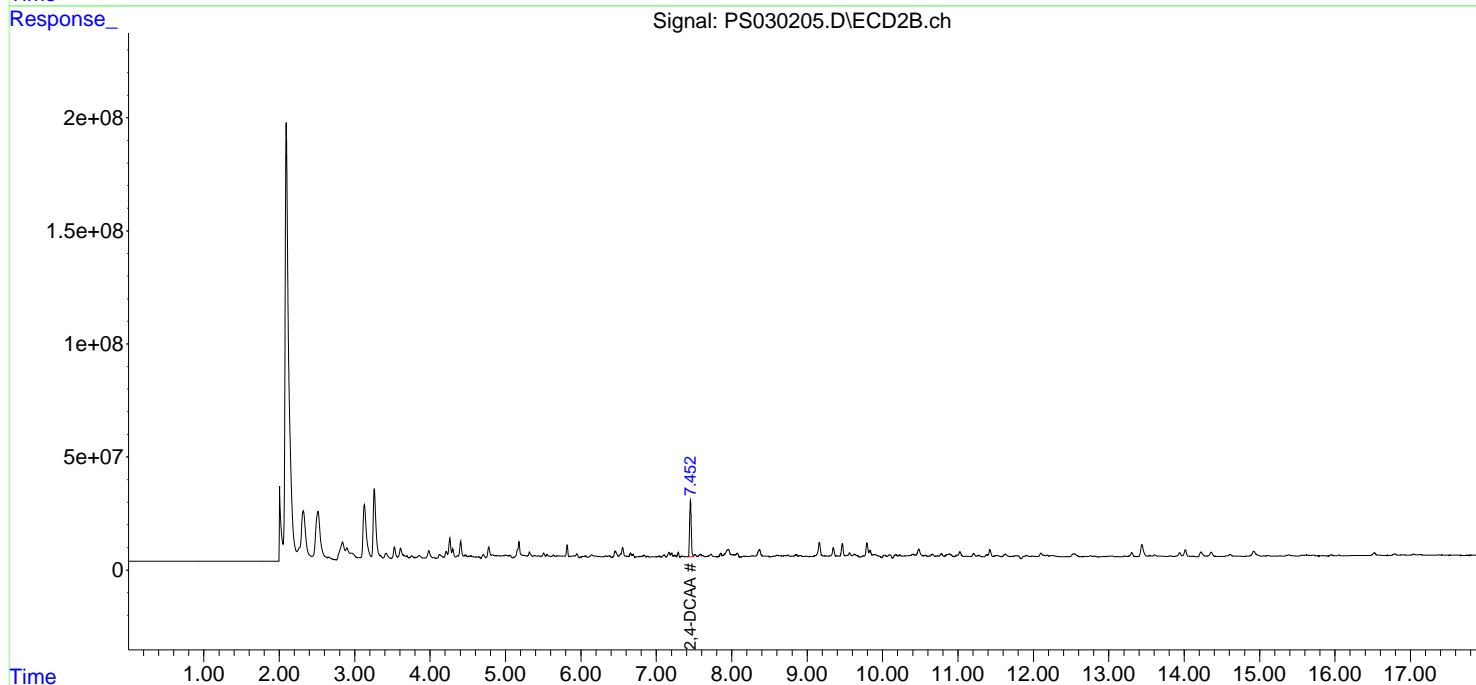
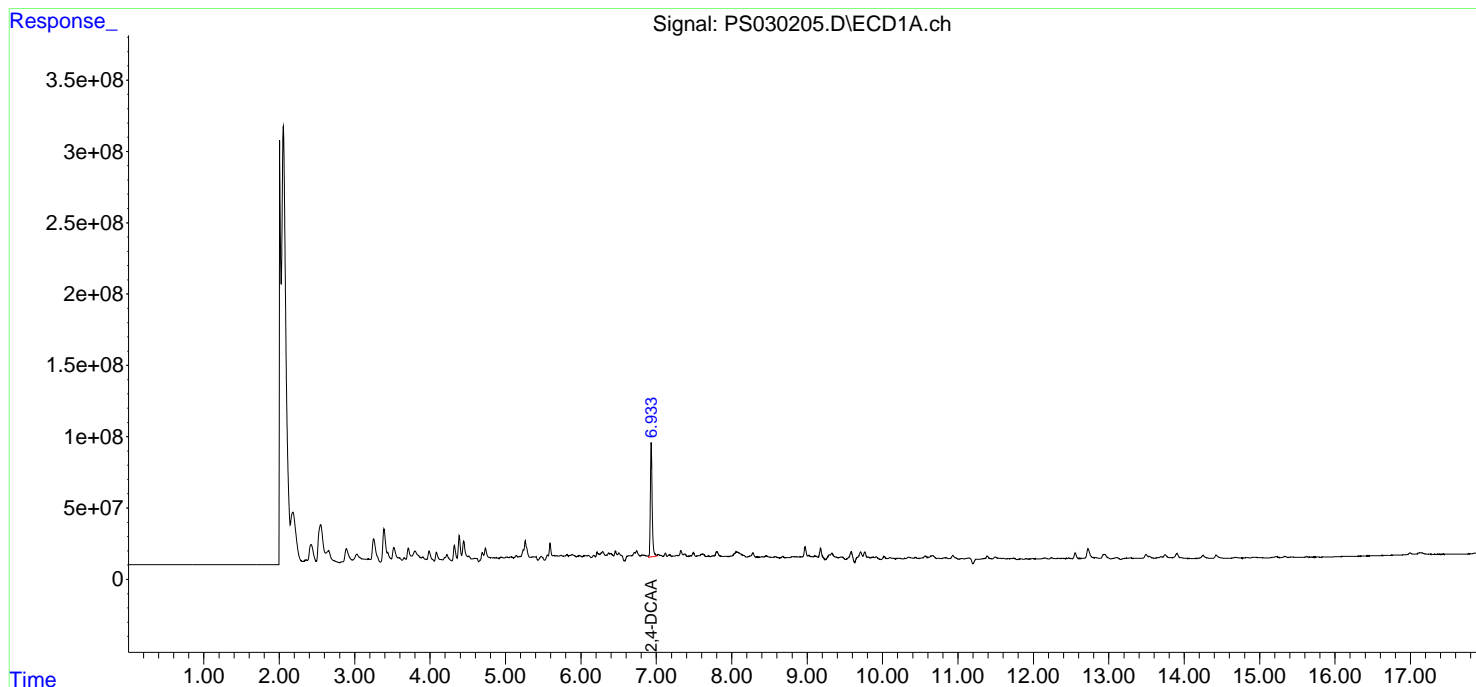
(f)=RT Delta > 1/2 Window (#)=Amounts differ by > 25% (m)=manual int.

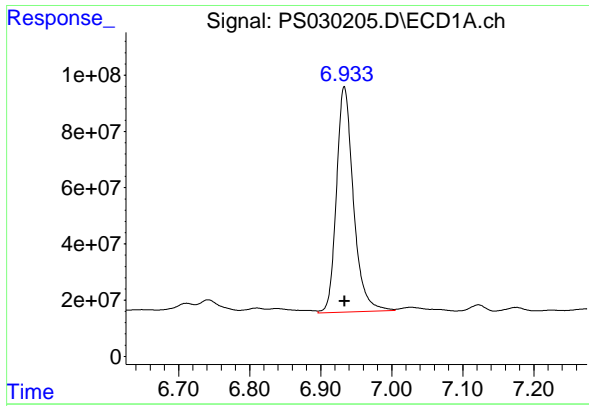
Data Path : Z:\pestpcbsrv\HPCHEM1\ECD_S\Data\PS051425\
 Data File : PS030205.D
 Signal(s) : Signal #1: ECD1A.ch Signal #2: ECD2B.ch
 Acq On : 14 May 2025 23:54
 Operator : AR\AJ
 Sample : Q2001-07
 Misc :
 ALS Vial : 34 Sample Multiplier: 1

Instrument :
 ECD_S
 ClientSampleId :
 WC-A1-05-C

Integration File signal 1: autoint1.e
 Integration File signal 2: autoint2.e
 Quant Time: May 15 06:41:47 2025
 Quant Method : Z:\pestpcbsrv\HPCHEM1\ECD_S\Method\PS051225.M
 Quant Title : 8080.M
 QLast Update : Mon May 12 14:29:24 2025
 Response via : Initial Calibration
 Integrator: ChemStation

Volume Inj. : 1 µl
 Signal #1 Phase : ZB-MR1 Signal #2 Phase: ZB-MR2
 Signal #1 Info : 30M x 0.32mm x 0.5 Signal #2 Info : 30M x 0.32mm x 0.25µm

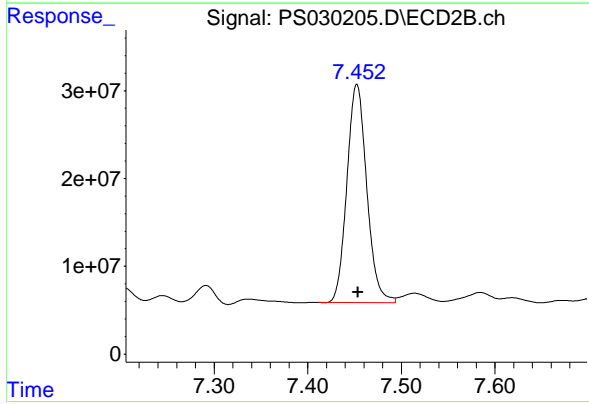




#4 2,4-DCAA

R.T.: 6.933 min
Delta R.T.: 0.000 min
Response: 1326079064
Conc: 465.65 ng/ml

Instrument :
ECD_S
ClientSampleId :
WC-A1-05-C



#4 2,4-DCAA

R.T.: 7.452 min
Delta R.T.: -0.001 min
Response: 366431094
Conc: 457.92 ng/ml