

Data Path : Z:\pestpcbsrv\HPCHEM1\ECD_S\Data\PS051425\
 Data File : PS030206.D
 Signal(s) : Signal #1: ECD1A.ch Signal #2: ECD2B.ch
 Acq On : 15 May 2025 00:18
 Operator : AR\AJ
 Sample : Q2001-11
 Misc :
 ALS Vial : 35 Sample Multiplier: 1

Instrument :
 ECD_S
 ClientSampleId :
 WC-A1-06-C

Integration File signal 1: autoint1.e
 Integration File signal 2: autoint2.e
 Quant Time: May 15 06:41:57 2025
 Quant Method : Z:\pestpcbsrv\HPCHEM1\ECD_S\Method\PS051225.M
 Quant Title : 8080.M
 QLast Update : Mon May 12 14:29:24 2025
 Response via : Initial Calibration
 Integrator: ChemStation

Volume Inj. : 1 µl
 Signal #1 Phase : ZB-MR1 Signal #2 Phase: ZB-MR2
 Signal #1 Info : 30M x 0.32mm x0.5 Signal #2 Info : 30M x 0.32mm x 0.25µm

Compound	RT#1	RT#2	Resp#1	Resp#2	ng/ml	ng/ml

System Monitoring Compounds						
4) S 2,4-DCAA	6.933	7.452	1359.2E6	382.1E6	477.291	477.491

Target Compounds

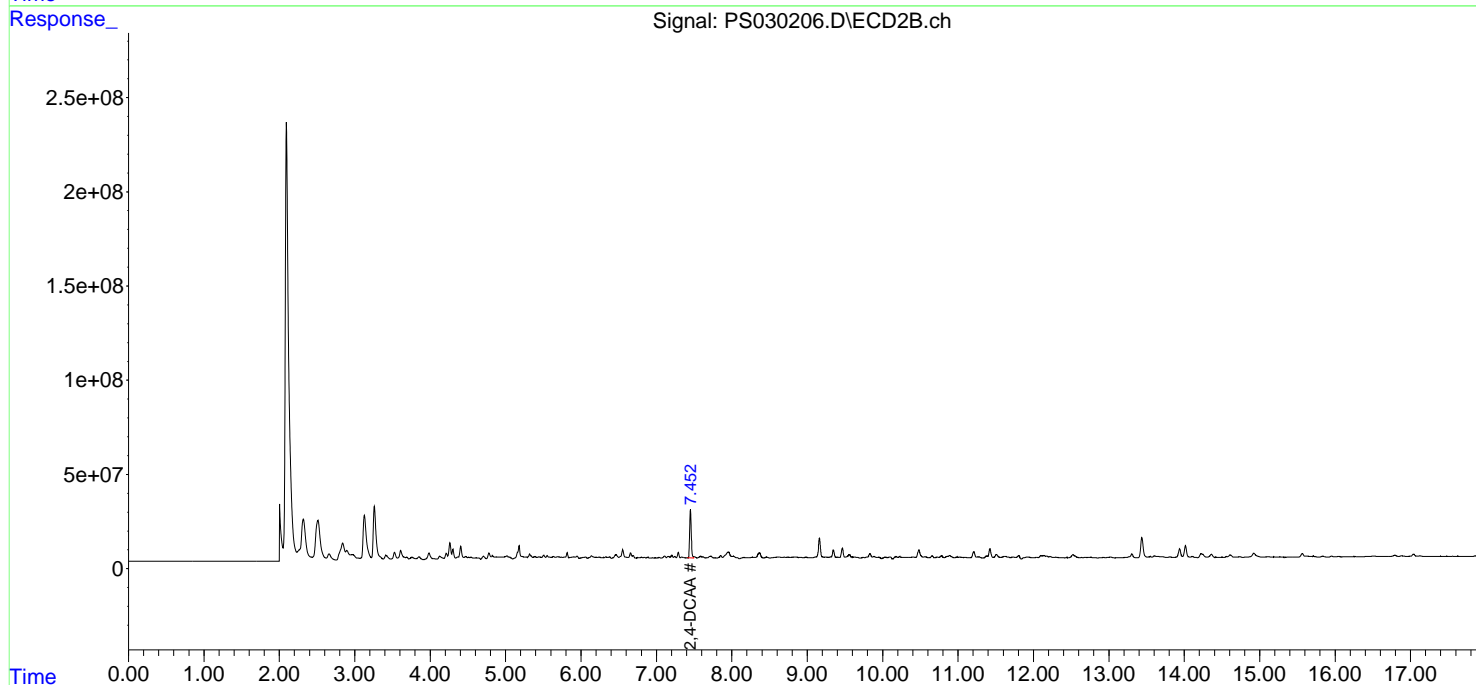
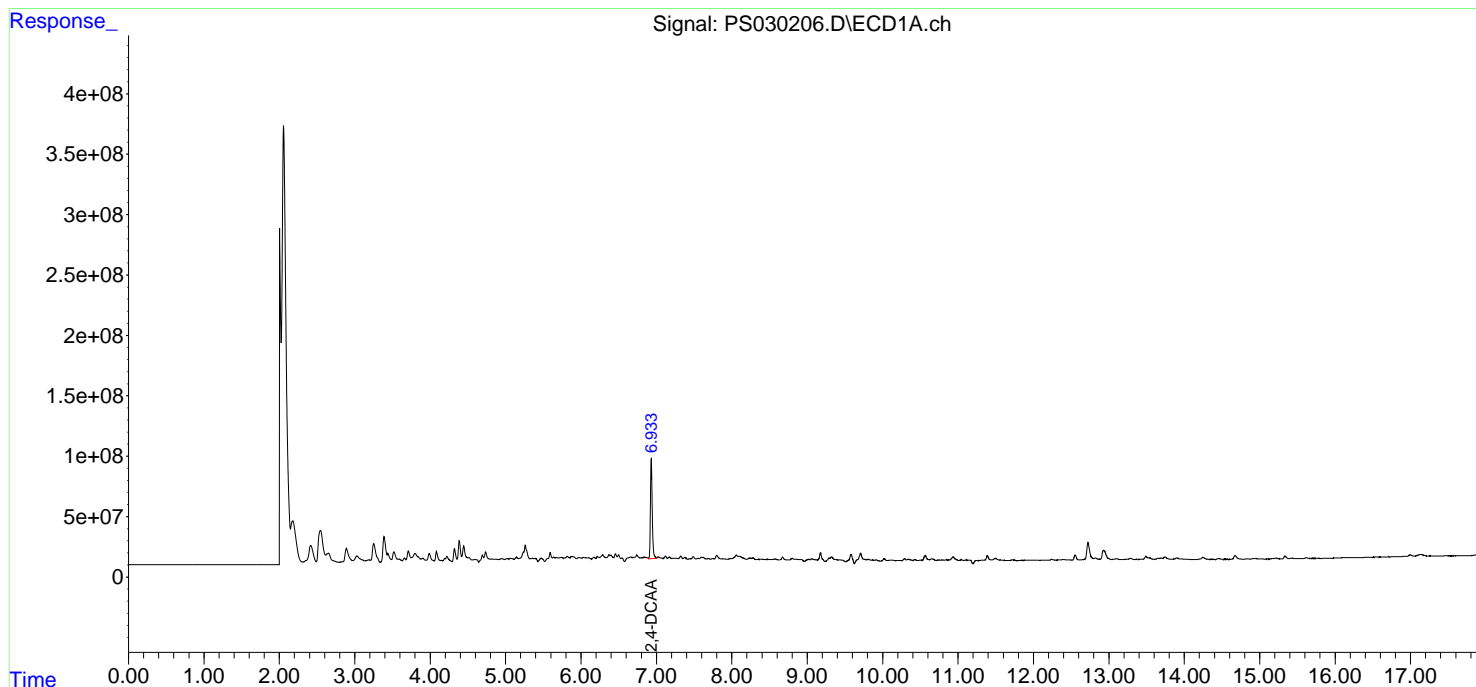
(f)=RT Delta > 1/2 Window (#)=Amounts differ by > 25% (m)=manual int.

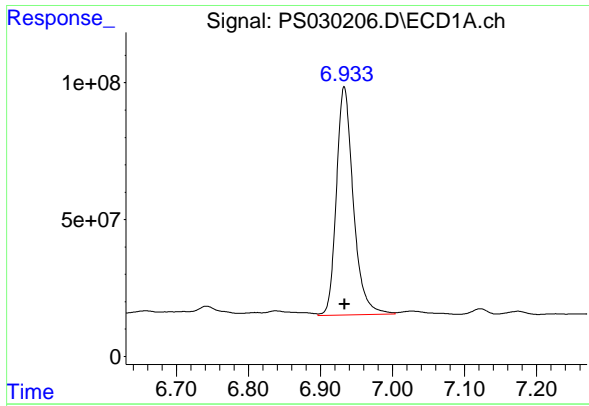
Data Path : Z:\pestpcbsrv\HPCHEM1\ECD_S\Data\PS051425\
Data File : PS030206.D
Signal(s) : Signal #1: ECD1A.ch Signal #2: ECD2B.ch
Acq On : 15 May 2025 00:18
Operator : AR\AJ
Sample : Q2001-11
Misc :
ALS Vial : 35 Sample Multiplier: 1

Instrument :
ECD_S
ClientSampleId :
WC-A1-06-C

Integration File signal 1: autoint1.e
Integration File signal 2: autoint2.e
Quant Time: May 15 06:41:57 2025
Quant Method : Z:\pestpcbsrv\HPCHEM1\ECD_S\Method\PS051225.M
Quant Title : 8080.M
QLast Update : Mon May 12 14:29:24 2025
Response via : Initial Calibration
Integrator: ChemStation

Volume Inj. : 1 µl
Signal #1 Phase : ZB-MR1 Signal #2 Phase: ZB-MR2
Signal #1 Info : 30M x 0.32mm x0.5 Signal #2 Info : 30M x 0.32mm x 0.25µm





#4 2,4-DCAA

R.T.: 6.933 min

Delta R.T.: 0.000 min

Response: 1359233183

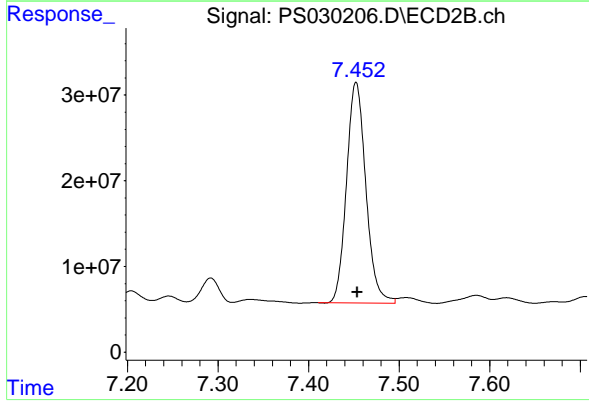
Conc: 477.29 ng/ml

Instrument :

ECD_S

ClientSampleId :

WC-A1-06-C



#4 2,4-DCAA

R.T.: 7.452 min

Delta R.T.: -0.001 min

Response: 382090317

Conc: 477.49 ng/ml