

Data Path : Z:\pestpcbsrv\HPCHEM1\ECD\_L\Data\PL051425\  
 Data File : PL095664.D  
 Signal(s) : Signal #1: ECD1A.ch Signal #2: ECD2B.ch  
 Acq On : 14 May 2025 15:44  
 Operator : AR\AJ  
 Sample : Q2001-11  
 Misc :  
 ALS Vial : 12 Sample Multiplier: 1

**Instrument :**  
 ECD\_L  
**ClientSampleId :**  
 WC-A1-06-C

**Manual Integrations**  
**APPROVED**  
 Reviewed By :Abdul Mirza 05/15/2025  
 Supervised By :mohammad ahmed 05/16/2025

Integration File signal 1: autoint1.e  
 Integration File signal 2: autoint2.e  
 Quant Time: May 15 02:09:38 2025  
 Quant Method : Z:\pestpcbsrv\HPCHEM1\ECD\_L\methods\PL051325.M  
 Quant Title : GC Extractables  
 QLast Update : Tue May 13 14:38:57 2025  
 Response via : Initial Calibration  
 Integrator: ChemStation

Volume Inj. : 1 µl  
 Signal #1 Phase : ZB-MR1 Signal #2 Phase: ZB-MR2  
 Signal #1 Info : 30M x 0.32mm x0.5 Signal #2 Info : 30M x 0.32mm x0.25µm

Compound	RT#1	RT#2	Resp#1	Resp#2	ng/ml	ng/ml
-----						
System Monitoring Compounds						
1) SA Tetrachlo...	3.592	2.905	81077099	85271504	19.843	18.205
28) SA Decachlor...	9.112	8.078	83952057	85734458	24.747	20.785

Target Compounds

(f)=RT Delta > 1/2 Window (#)=Amounts differ by > 25% (m)=manual int.

Data Path : Z:\pestpcbsrv\HPCHEM1\ECD\_L\Data\PL051425\  
 Data File : PL095664.D  
 Signal(s) : Signal #1: ECD1A.ch Signal #2: ECD2B.ch  
 Acq On : 14 May 2025 15:44  
 Operator : AR\AJ  
 Sample : Q2001-11  
 Misc :  
 ALS Vial : 12 Sample Multiplier: 1

**Instrument :**

ECD\_L

**ClientSampleId :**

WC-A1-06-C

**Manual Integrations**

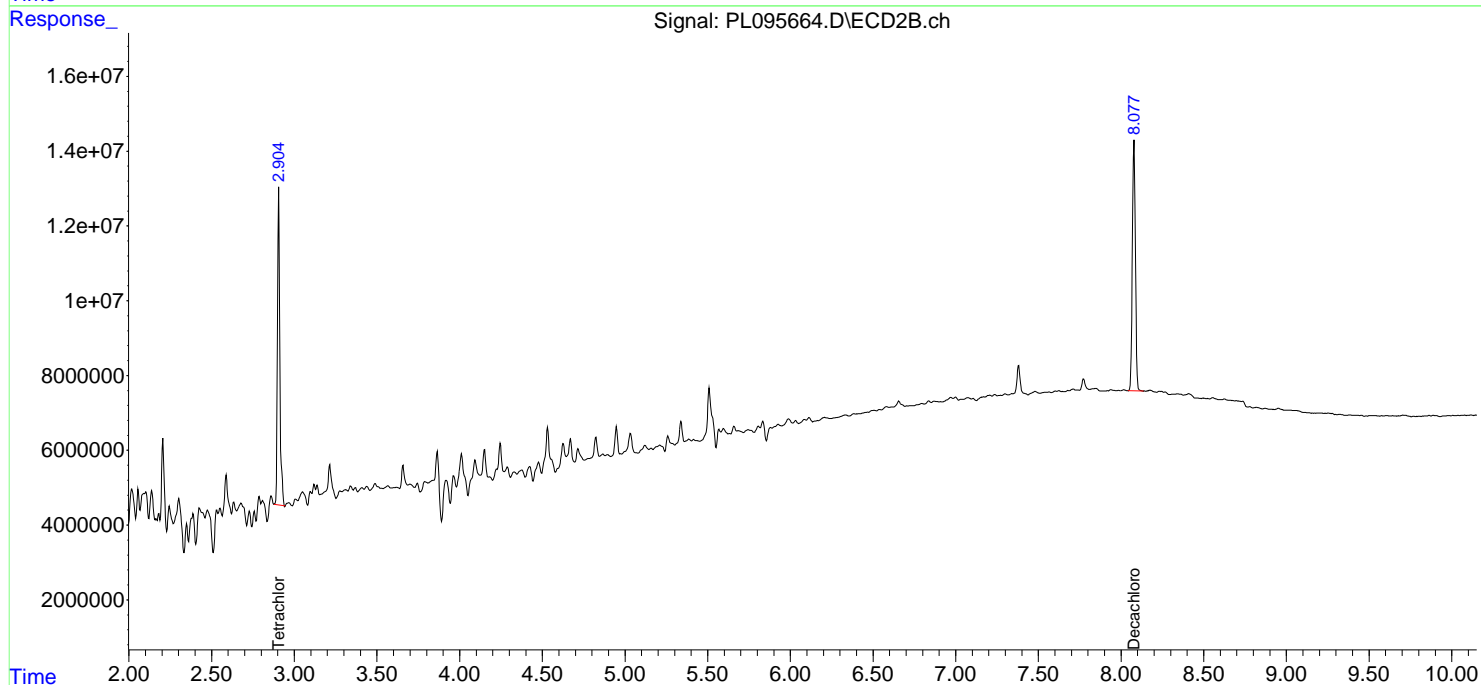
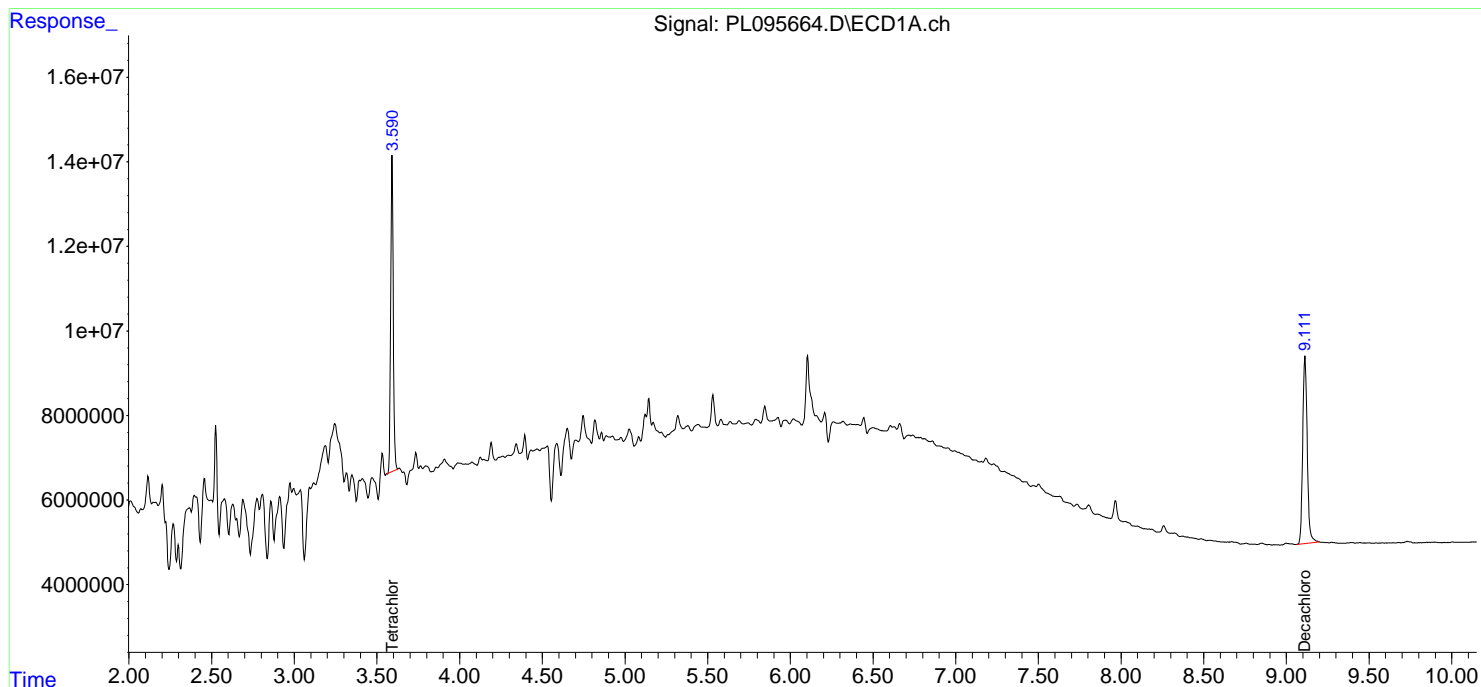
**APPROVED**

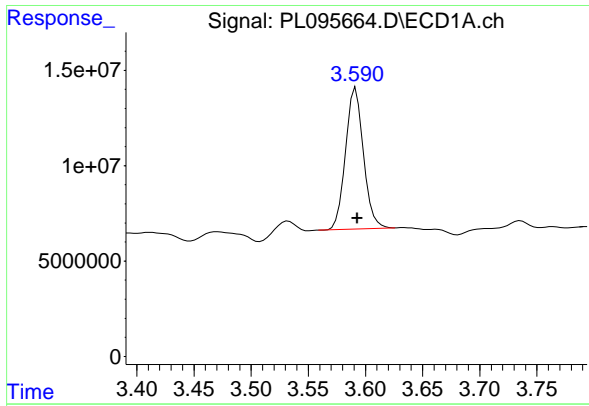
Reviewed By :Abdul Mirza 05/15/2025

Supervised By :mohammad ahmed 05/16/2025

Integration File signal 1: autoint1.e  
 Integration File signal 2: autoint2.e  
 Quant Time: May 15 02:09:38 2025  
 Quant Method : Z:\pestpcbsrv\HPCHEM1\ECD\_L\methods\PL051325.M  
 Quant Title : GC Extractables  
 QLast Update : Tue May 13 14:38:57 2025  
 Response via : Initial Calibration  
 Integrator: ChemStation

Volume Inj. : 1 µl  
 Signal #1 Phase : ZB-MR1 Signal #2 Phase: ZB-MR2  
 Signal #1 Info : 30M x 0.32mm x0.5 Signal #2 Info : 30M x 0.32mm x0.25µm





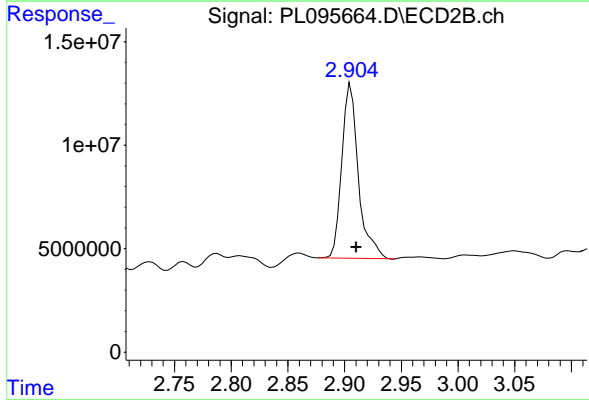
#1 Tetrachloro-m-xylene

R.T.: 3.592 min  
 Delta R.T.: -0.001 min  
 Response: 81077099  
 Conc: 19.84 ng/ml

Instrument : ECD\_L  
 Client Sample Id : WC-A1-06-C

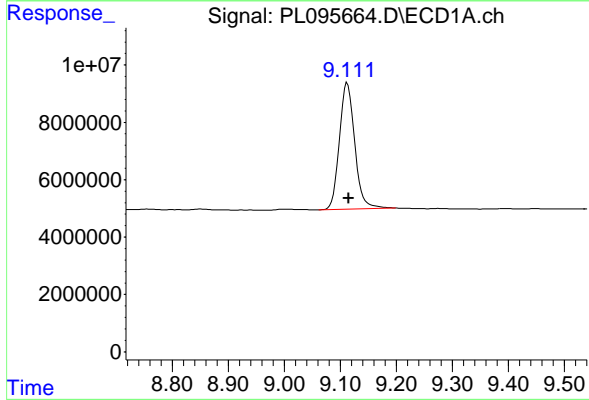
Manual Integrations  
 APPROVED

Reviewed By :Abdul Mirza 05/15/2025  
 Supervised By :mohammad ahmed 05/16/2025



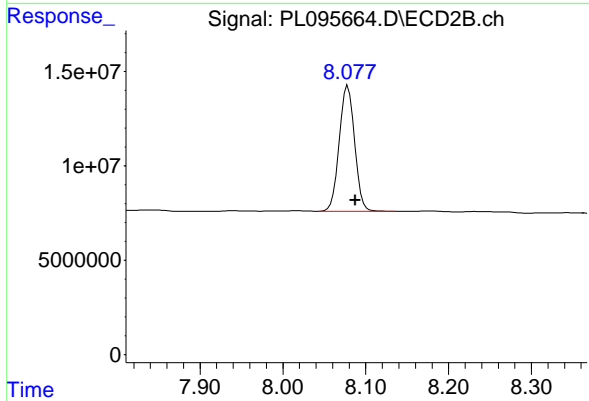
#1 Tetrachloro-m-xylene

R.T.: 2.905 min  
 Delta R.T.: -0.005 min  
 Response: 85271504  
 Conc: 18.20 ng/ml



#28 Decachlorobiphenyl

R.T.: 9.112 min  
 Delta R.T.: -0.003 min  
 Response: 83952057  
 Conc: 24.75 ng/ml



#28 Decachlorobiphenyl

R.T.: 8.078 min  
 Delta R.T.: -0.009 min  
 Response: 85734458  
 Conc: 20.79 ng/ml