

Data Path : Z:\voasrv\HPCHEM1\MSVOA\_X\Data\VX051325\  
 Data File : VX046163.D  
 Acq On : 13 May 2025 14:01  
 Operator : JC/MD  
 Sample : Q2001-01  
 Misc : 5.0mL/MSVOA\_X/WATER  
 ALS Vial : 12 Sample Multiplier: 1

Instrument :  
 MSVOA\_X  
 ClientSampleId :  
 WC-A4-03-G

Quant Time: May 14 01:39:24 2025  
 Quant Method : Z:\voasrv\HPCHEM1\MSVOA\_X\Method\82X050525W.M  
 Quant Title : SW846 8260  
 QLast Update : Tue May 06 07:12:22 2025  
 Response via : Initial Calibration

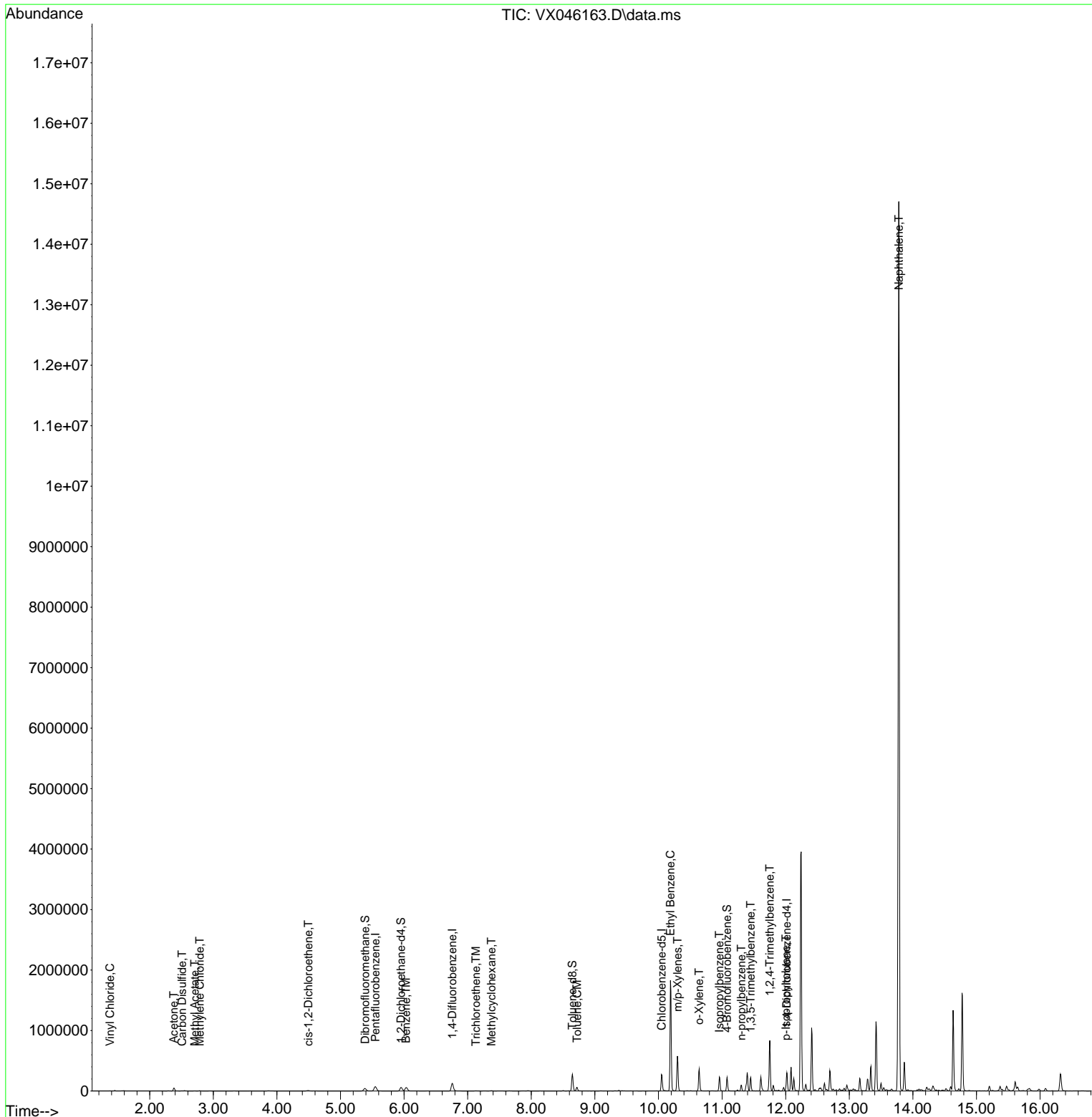
Compound	R.T.	QIon	Response	Conc	Units	Dev(Min)
-----						
Internal Standards						
1) Pentafluorobenzene	5.550	168	60233	50.000	ug/l	0.00
34) 1,4-Difluorobenzene	6.757	114	120477	50.000	ug/l	0.00
63) Chlorobenzene-d5	10.049	117	113675	50.000	ug/l	0.00
72) 1,4-Dichlorobenzene-d4	12.018	152	50921	50.000	ug/l	0.00
System Monitoring Compounds						
33) 1,2-Dichloroethane-d4	5.952	65	61766	55.004	ug/l	0.00
Spiked Amount	50.000	Range 74 - 125	Recovery	=	110.000%	
35) Dibromofluoromethane	5.385	113	36650	42.245	ug/l	0.00
Spiked Amount	50.000	Range 75 - 124	Recovery	=	84.480%	
50) Toluene-d8	8.647	98	156211	52.023	ug/l	0.00
Spiked Amount	50.000	Range 86 - 113	Recovery	=	104.040%	
62) 4-Bromofluorobenzene	11.079	95	59888	51.995	ug/l	0.00
Spiked Amount	50.000	Range 77 - 121	Recovery	=	103.980%	
Target Compounds						
						Qvalue
4) Vinyl Chloride	1.374	62	867	1.042	ug/l #	83
16) Acetone	2.380	43	55166	122.524	ug/l	97
17) Carbon Disulfide	2.508	76	4536	2.679	ug/l #	94
18) Methyl Acetate	2.709	43	1623	1.553	ug/l	93
20) Methylene Chloride	2.788	84	2399	2.780	ug/l #	89
27) cis-1,2-Dichloroethene	4.495	96	5066	5.859	ug/l	89
39) Methylcyclohexane	7.373	83	1927	1.284	ug/l #	85
40) Benzene	6.031	78	69237	20.278	ug/l	100
44) Trichloroethene	7.129	130	1104	1.343	ug/l	94
52) Toluene	8.720	92	22661	10.824	ug/l	99
67) Ethyl Benzene	10.189	91	1012226	230.797	ug/l	100
68) m/p-Xylenes	10.299	106	119909	74.753	ug/l	98
69) o-Xylene	10.640	106	69910	44.705	ug/l	96
73) Isopropylbenzene	10.957	105	116726	29.444	ug/l	100
78) n-propylbenzene	11.305	91	60523	13.130	ug/l	98
80) 1,3,5-Trimethylbenzene	11.451	105	96138	29.028	ug/l	99
84) 1,2,4-Trimethylbenzene	11.750	105	336977	100.472	ug/l	99
86) p-Isopropyltoluene	12.006	119	13115	3.879	ug/l #	70
95) Naphthalene	13.780	128	8416185	2370.244	ug/l	97
-----						

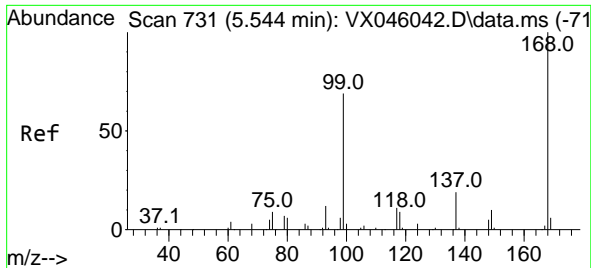
(#) = qualifier out of range (m) = manual integration (+) = signals summed

Data Path : Z:\voasrv\HPCHEM1\MSVOA\_X\Data\VX051325\  
 Data File : VX046163.D  
 Acq On : 13 May 2025 14:01  
 Operator : JC/MD  
 Sample : Q2001-01  
 Misc : 5.0mL/MSVOA\_X/WATER  
 ALS Vial : 12 Sample Multiplier: 1

Instrument :  
 MSVOA\_X  
 ClientSampleId :  
 WC-A4-03-G

Quant Time: May 14 01:39:24 2025  
 Quant Method : Z:\voasrv\HPCHEM1\MSVOA\_X\Method\82X050525W.M  
 Quant Title : SW846 8260  
 QLast Update : Tue May 06 07:12:22 2025  
 Response via : Initial Calibration

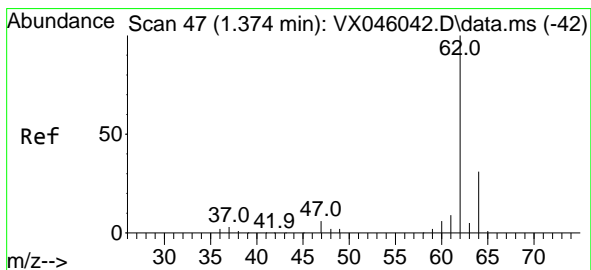
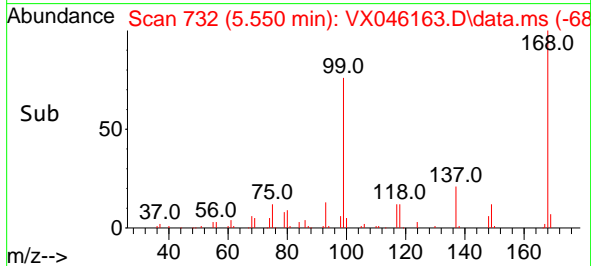
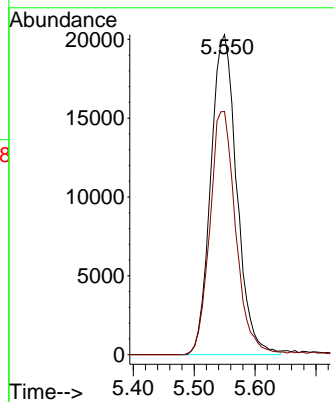
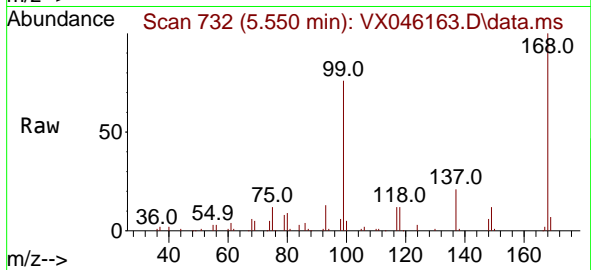




#1  
 Pentafluorobenzene  
 Concen: 50.000 ug/l  
 RT: 5.550 min Scan# 71  
 Delta R.T. 0.006 min  
 Lab File: VX046163.D  
 Acq: 13 May 2025 14:01

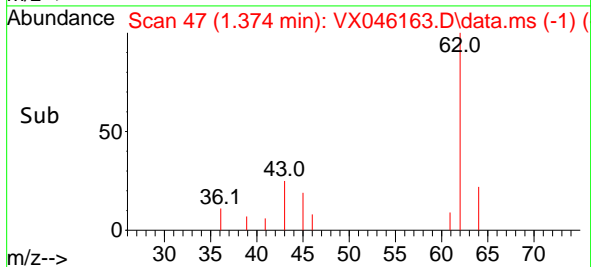
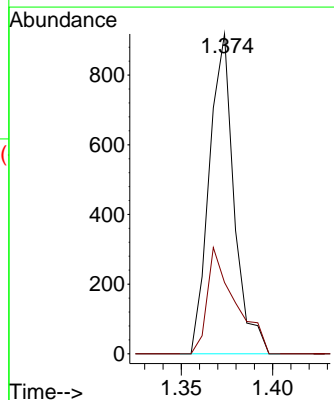
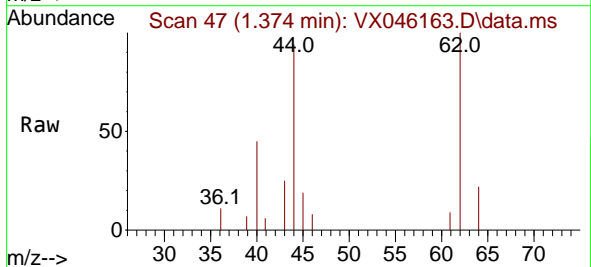
Instrument :  
 MSVOA\_X  
 ClientSampleId :  
 WC-A4-03-G

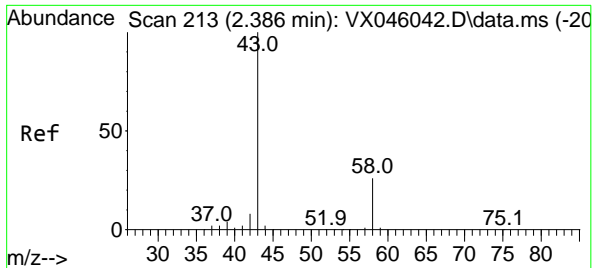
Tgt Ion:168 Resp: 60233  
 Ion Ratio Lower Upper  
 168 100  
 99 76.0 54.9 82.3



#4  
 Vinyl Chloride  
 Concen: 1.042 ug/l  
 RT: 1.374 min Scan# 47  
 Delta R.T. -0.000 min  
 Lab File: VX046163.D  
 Acq: 13 May 2025 14:01

Tgt Ion: 62 Resp: 867  
 Ion Ratio Lower Upper  
 62 100  
 64 22.3 25.2 37.8#



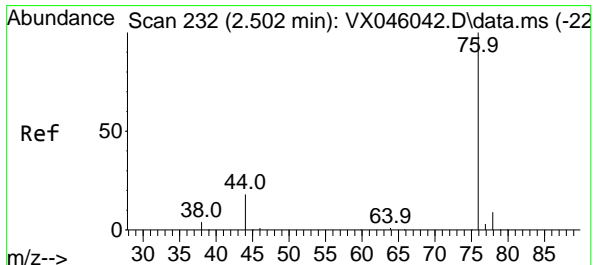
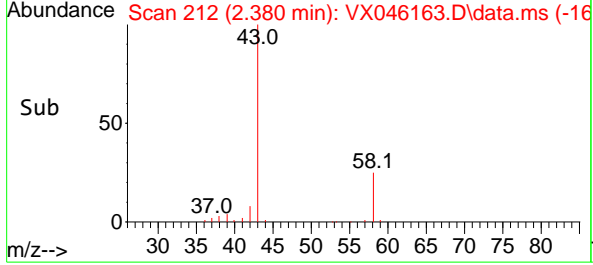
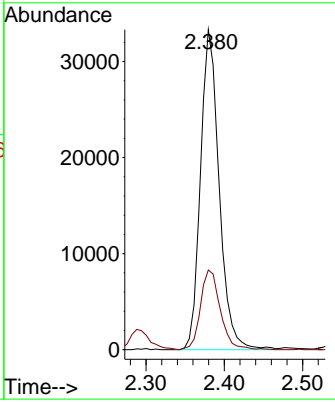
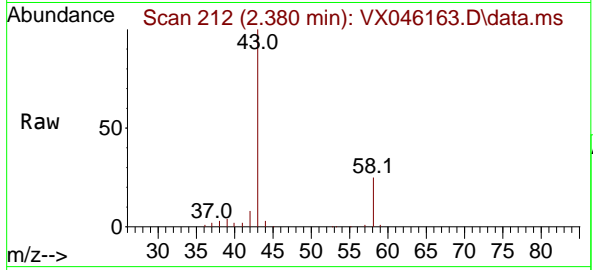


#16  
 Acetone  
 Concen: 122.524 ug/l  
 RT: 2.380 min Scan# 211  
 Delta R.T. -0.006 min  
 Lab File: VX046163.D  
 Acq: 13 May 2025 14:01

Instrument : MSVOA\_X  
 ClientSampleId : WC-A4-03-G

Tgt Ion: 43 Resp: 55166

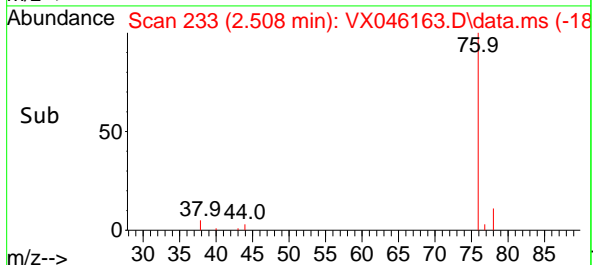
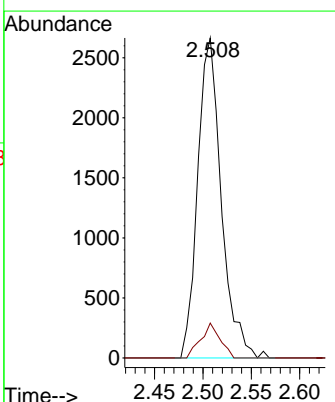
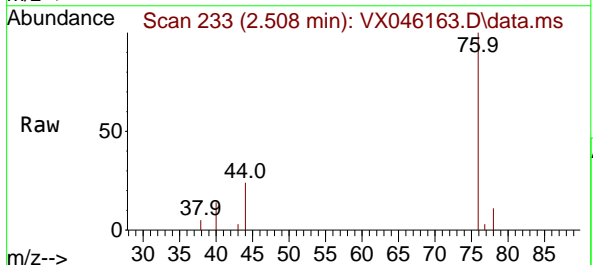
Ion	Ratio	Lower	Upper
43	100		
58	24.9	21.2	31.8

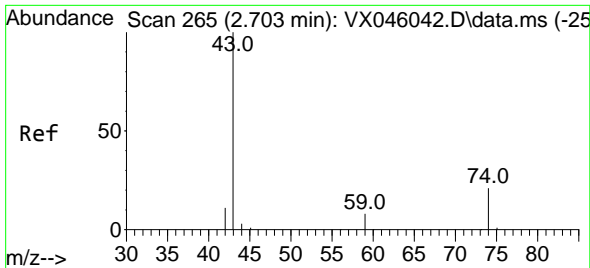


#17  
 Carbon Disulfide  
 Concen: 2.679 ug/l  
 RT: 2.508 min Scan# 233  
 Delta R.T. 0.006 min  
 Lab File: VX046163.D  
 Acq: 13 May 2025 14:01

Tgt Ion: 76 Resp: 4536

Ion	Ratio	Lower	Upper
76	100		
78	10.9	7.0	10.4

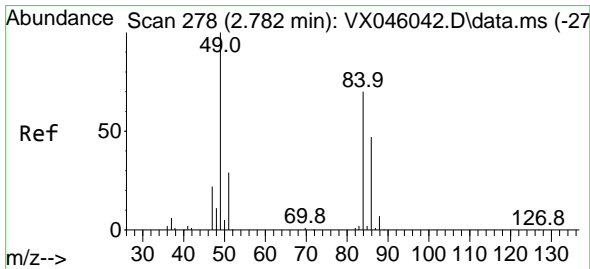
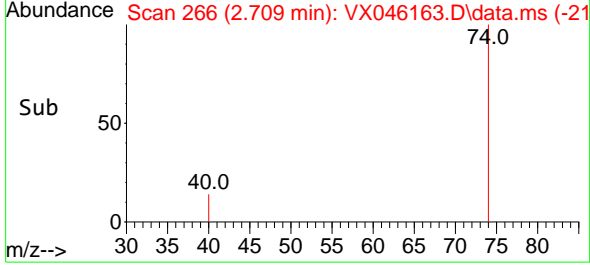
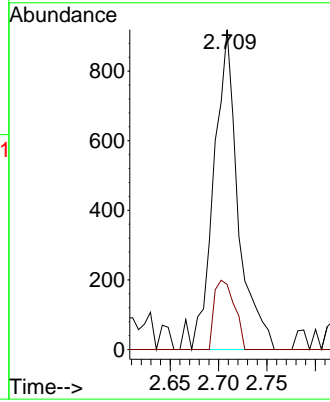
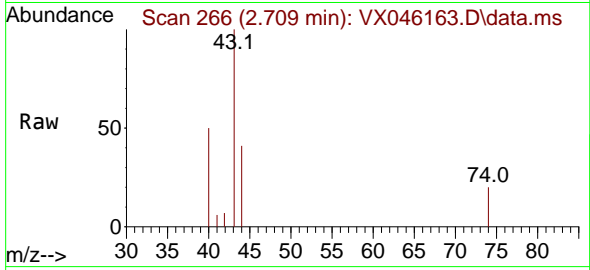




#18  
 Methyl Acetate  
 Concen: 1.553 ug/l  
 RT: 2.709 min Scan# 20  
 Delta R.T. 0.006 min  
 Lab File: VX046163.D  
 Acq: 13 May 2025 14:01

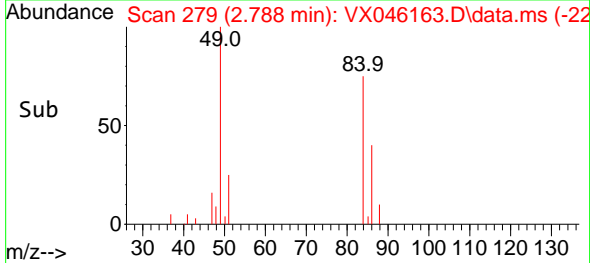
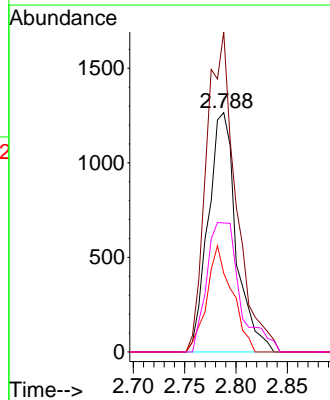
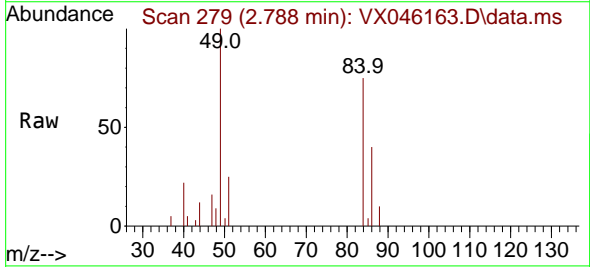
Instrument :  
 MSVOA\_X  
 ClientSampleId :  
 WC-A4-03-G

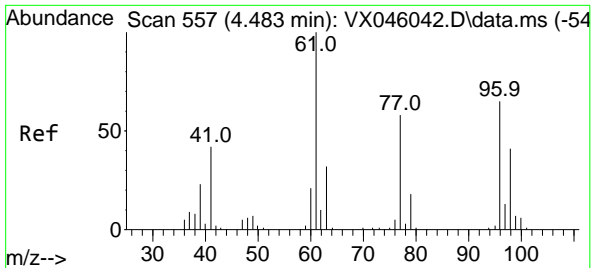
Tgt Ion: 43 Resp: 1623  
 Ion Ratio Lower Upper  
 43 100  
 74 17.7 16.7 25.1



#20  
 Methylene Chloride  
 Concen: 2.780 ug/l  
 RT: 2.788 min Scan# 279  
 Delta R.T. 0.006 min  
 Lab File: VX046163.D  
 Acq: 13 May 2025 14:01

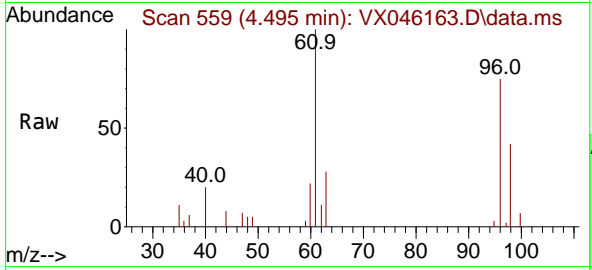
Tgt Ion: 84 Resp: 2399  
 Ion Ratio Lower Upper  
 84 100  
 49 133.6 113.9 170.9  
 51 32.9 33.5 50.3#  
 86 53.9 53.8 80.8





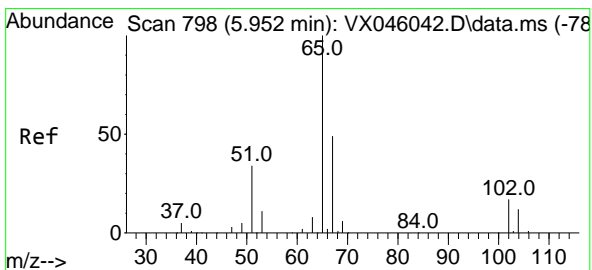
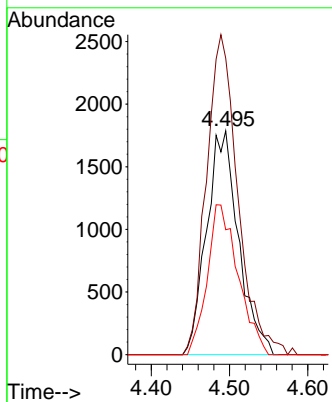
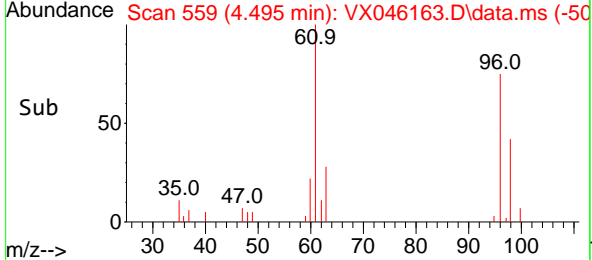
#27  
 cis-1,2-Dichloroethene  
 Concen: 5.859 ug/l  
 RT: 4.495 min Scan# 511  
 Delta R.T. 0.012 min  
 Lab File: VX046163.D  
 Acq: 13 May 2025 14:01

Instrument :  
 MSVOA\_X  
 ClientSampleId :  
 WC-A4-03-G

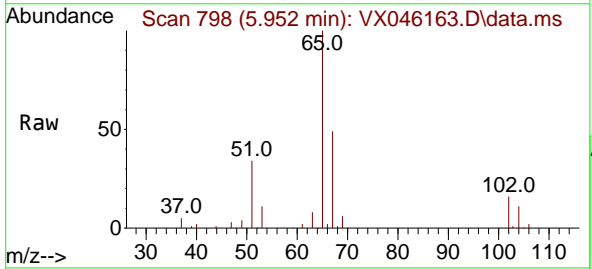


Tgt Ion: 96 Resp: 5066

Ion	Ratio	Lower	Upper
96	100		
61	140.6	0.0	322.8
98	64.7	0.0	129.0

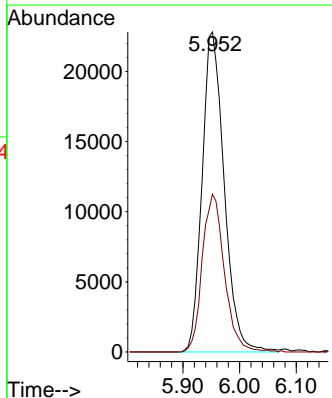
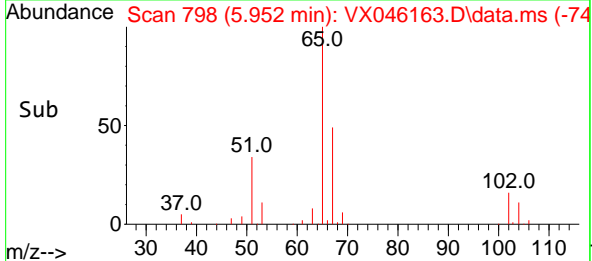


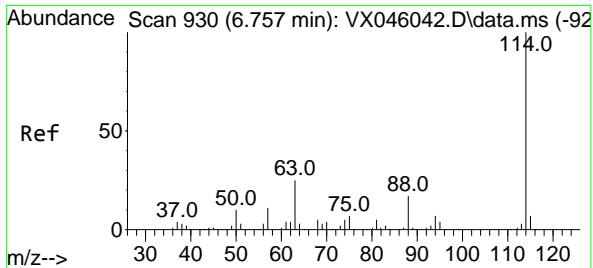
#33  
 1,2-Dichloroethane-d4  
 Concen: 55.004 ug/l  
 RT: 5.952 min Scan# 798  
 Delta R.T. -0.000 min  
 Lab File: VX046163.D  
 Acq: 13 May 2025 14:01



Tgt Ion: 65 Resp: 61766

Ion	Ratio	Lower	Upper
65	100		
67	49.4	0.0	99.0

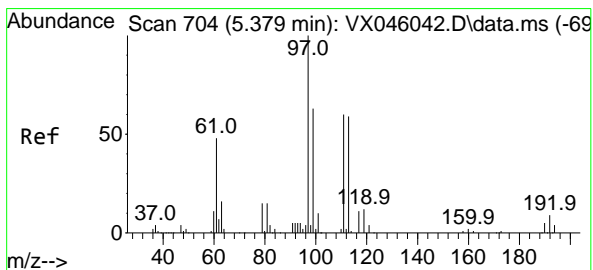
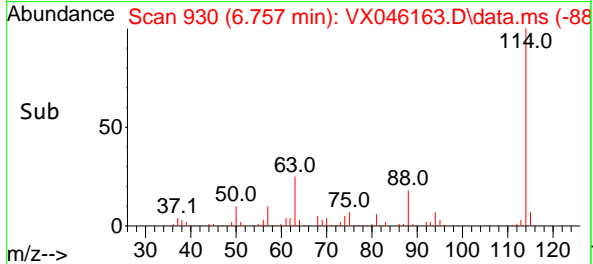
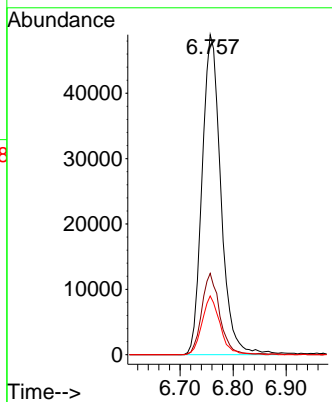
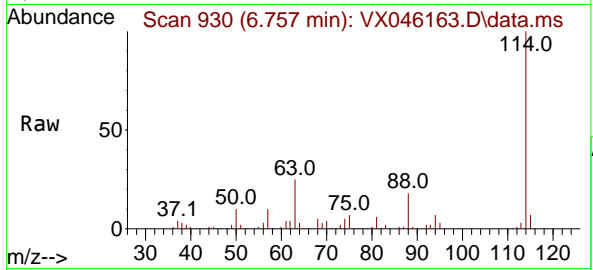




#34  
 1,4-Difluorobenzene  
 Concen: 50.000 ug/l  
 RT: 6.757 min Scan# 91  
 Delta R.T. -0.000 min  
 Lab File: VX046163.D  
 Acq: 13 May 2025 14:01

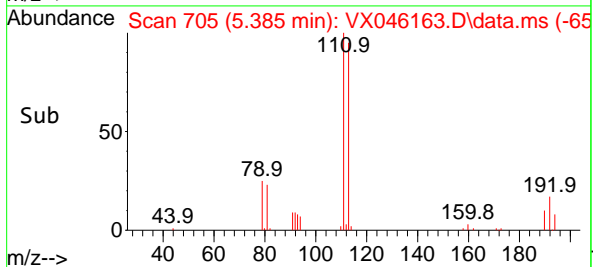
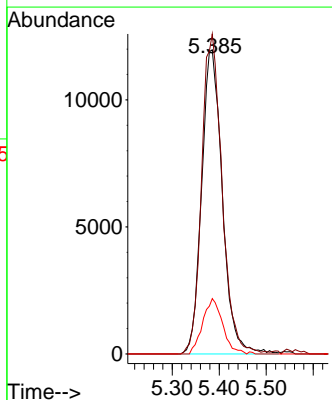
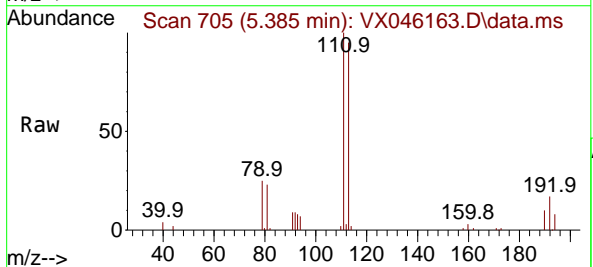
Instrument :  
 MSVOA\_X  
 ClientSampleId :  
 WC-A4-03-G

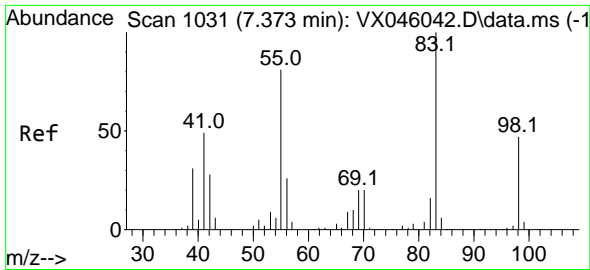
Tgt Ion	Resp	Lower	Upper
114	120477		
63	25.4	0.0	49.2
88	18.3	0.0	33.6



#35  
 Dibromofluoromethane  
 Concen: 42.245 ug/l  
 RT: 5.385 min Scan# 705  
 Delta R.T. 0.006 min  
 Lab File: VX046163.D  
 Acq: 13 May 2025 14:01

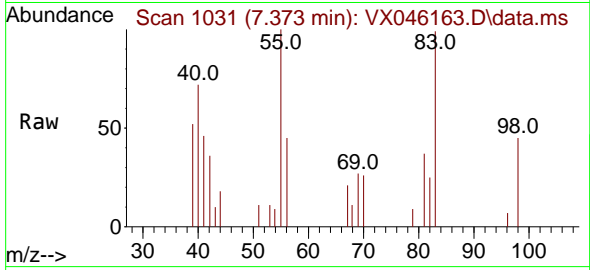
Tgt Ion	Resp	Lower	Upper
113	36650		
113	100		
111	103.4	83.1	124.7
192	17.4	13.3	19.9



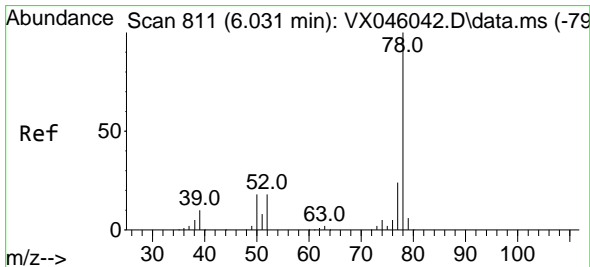
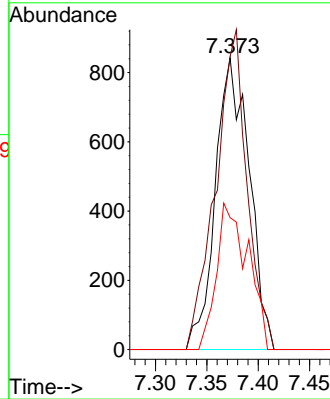
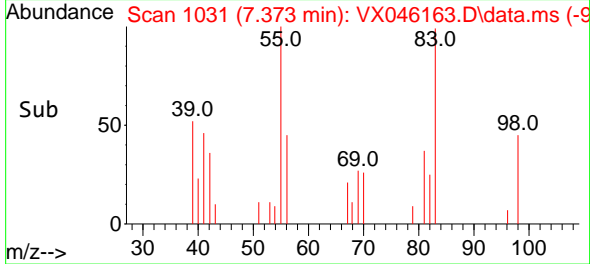


#39  
 Methylcyclohexane  
 Concen: 1.284 ug/l  
 RT: 7.373 min Scan# 1031  
 Delta R.T. -0.000 min  
 Lab File: VX046163.D  
 Acq: 13 May 2025 14:01

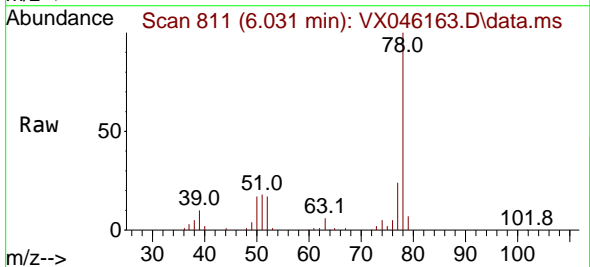
Instrument : MSVOA\_X  
 ClientSampleId : WC-A4-03-G



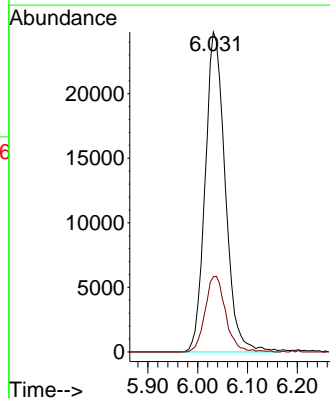
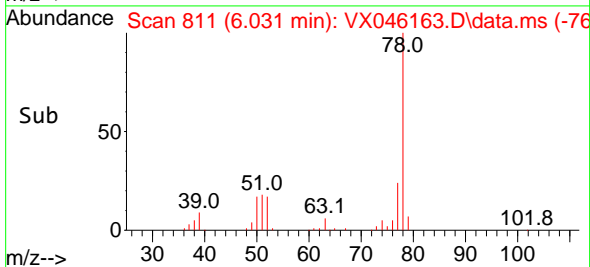
Tgt Ion: 83 Resp: 1927  
 Ion Ratio Lower Upper  
 83 100  
 55 100.6 64.7 97.1#  
 98 45.2 37.4 56.2



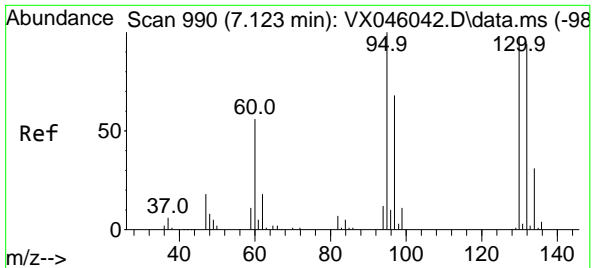
#40  
 Benzene  
 Concen: 20.278 ug/l  
 RT: 6.031 min Scan# 811  
 Delta R.T. -0.000 min  
 Lab File: VX046163.D  
 Acq: 13 May 2025 14:01



Tgt Ion: 78 Resp: 69237  
 Ion Ratio Lower Upper  
 78 100  
 77 23.5 19.0 28.4



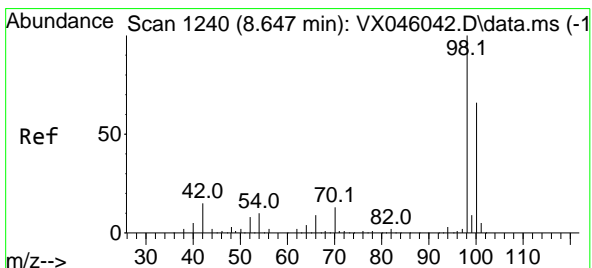
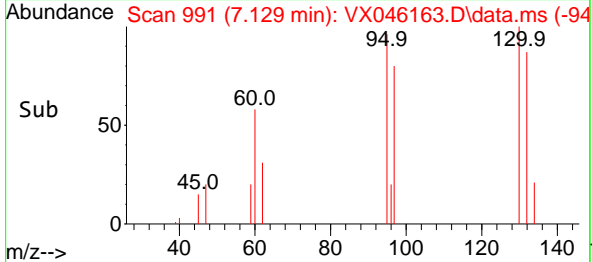
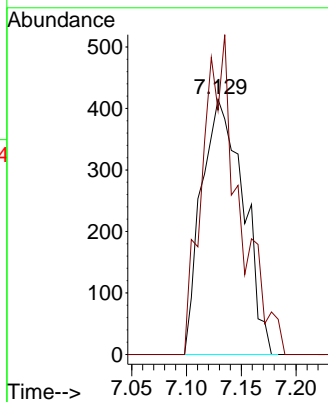
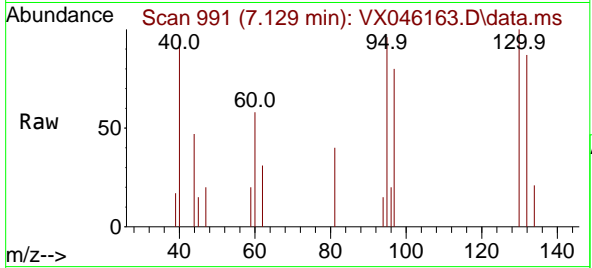




#44  
 Trichloroethene  
 Concen: 1.343 ug/l  
 RT: 7.129 min Scan# 991  
 Delta R.T. 0.006 min  
 Lab File: VX046163.D  
 Acq: 13 May 2025 14:01

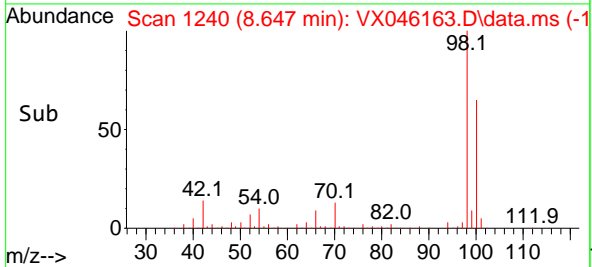
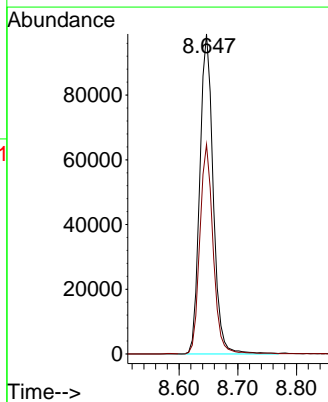
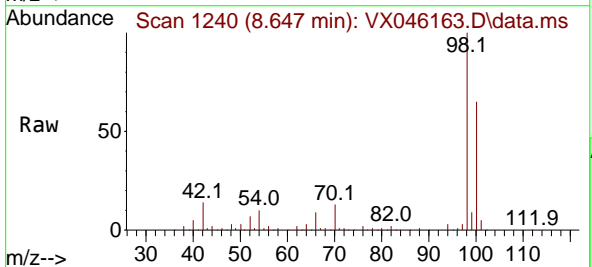
Instrument : MSVOA\_X  
 ClientSampleId : WC-A4-03-G

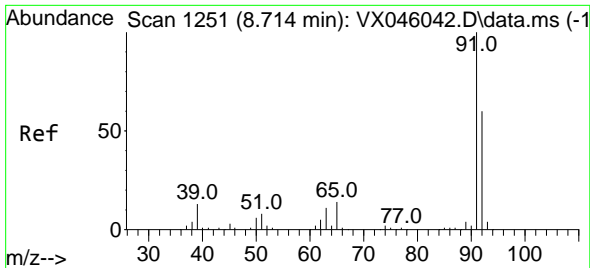
Tgt Ion:130 Resp: 1104  
 Ion Ratio Lower Upper  
 130 100  
 95 95.7 0.0 204.2



#50  
 Toluene-d8  
 Concen: 52.023 ug/l  
 RT: 8.647 min Scan# 1240  
 Delta R.T. -0.000 min  
 Lab File: VX046163.D  
 Acq: 13 May 2025 14:01

Tgt Ion: 98 Resp: 156211  
 Ion Ratio Lower Upper  
 98 100  
 100 64.8 53.5 80.3

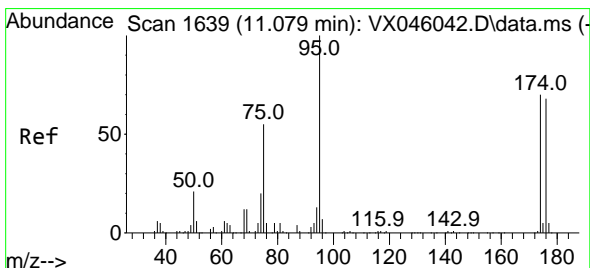
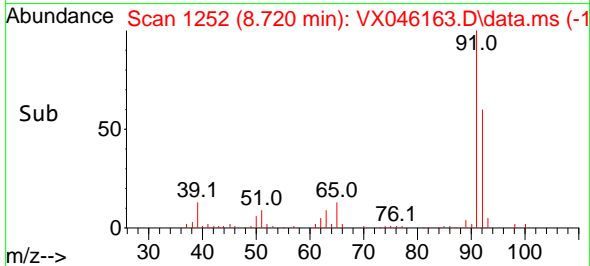
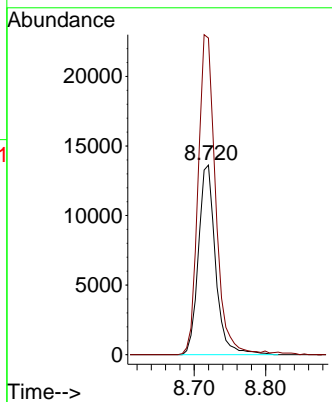
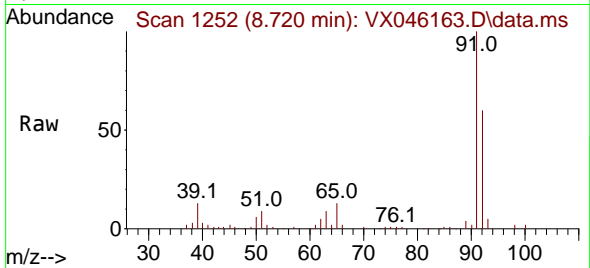




#52  
 Toluene  
 Concen: 10.824 ug/l  
 RT: 8.720 min Scan# 11  
 Delta R.T. 0.006 min  
 Lab File: VX046163.D  
 Acq: 13 May 2025 14:01

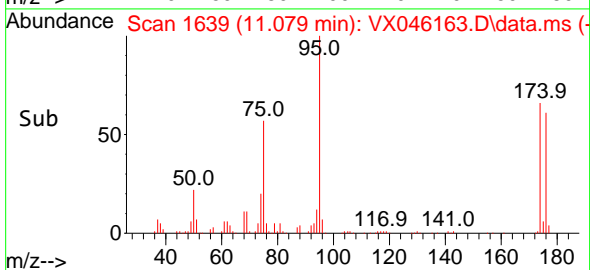
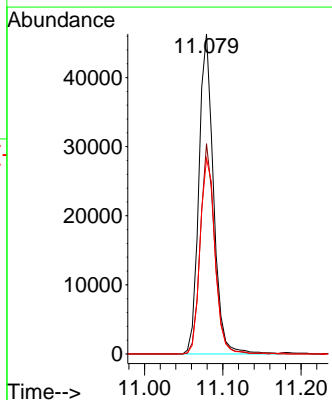
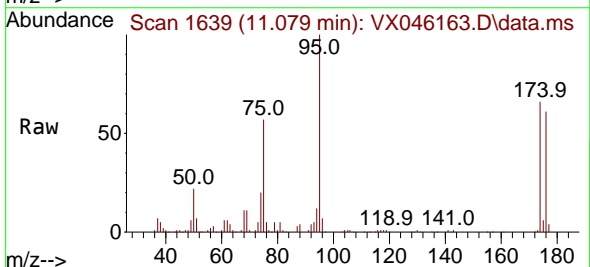
Instrument :  
 MSVOA\_X  
 ClientSampleId :  
 WC-A4-03-G

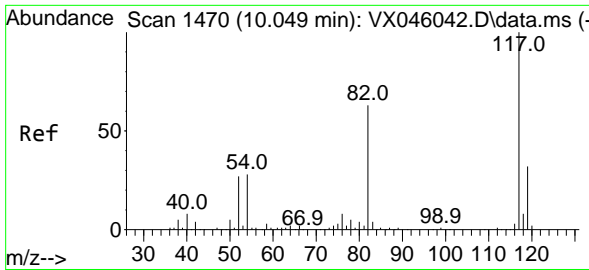
Tgt Ion: 92 Resp: 22661  
 Ion Ratio Lower Upper  
 92 100  
 91 171.8 136.6 205.0



#62  
 4-Bromofluorobenzene  
 Concen: 51.995 ug/l  
 RT: 11.079 min Scan# 1639  
 Delta R.T. -0.000 min  
 Lab File: VX046163.D  
 Acq: 13 May 2025 14:01

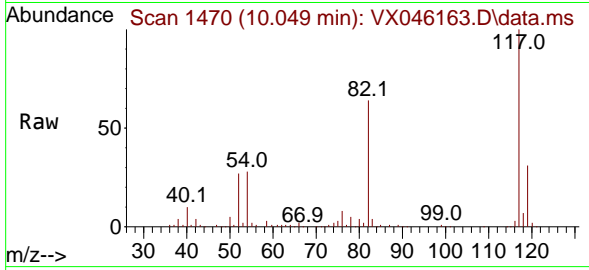
Tgt Ion: 95 Resp: 59888  
 Ion Ratio Lower Upper  
 95 100  
 174 64.0 0.0 135.8  
 176 62.8 0.0 131.4



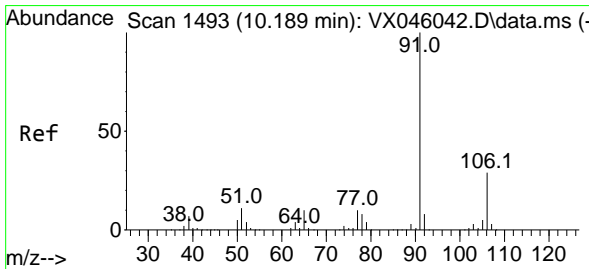
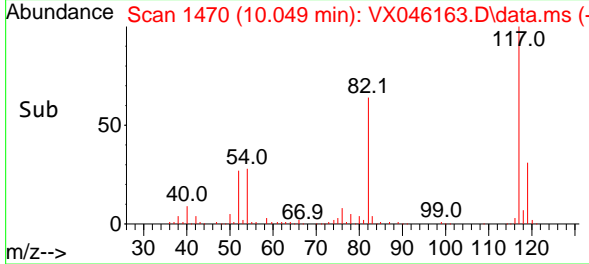
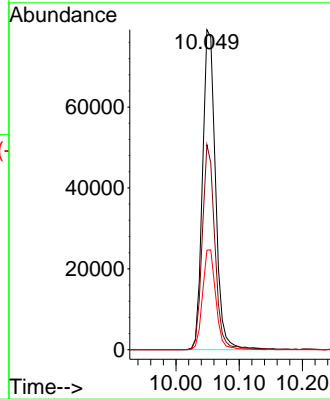


#63  
 Chlorobenzene-d5  
 Concen: 50.000 ug/l  
 RT: 10.049 min Scan# 14  
 Delta R.T. -0.000 min  
 Lab File: VX046163.D  
 Acq: 13 May 2025 14:01

Instrument :  
 MSVOA\_X  
 ClientSampleId :  
 WC-A4-03-G

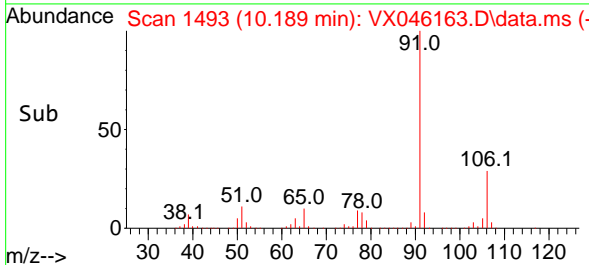
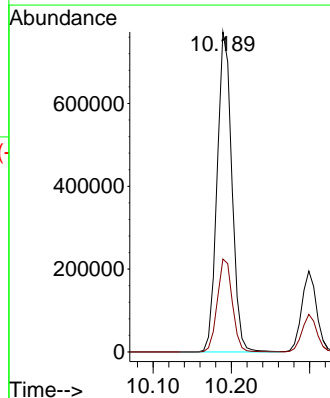
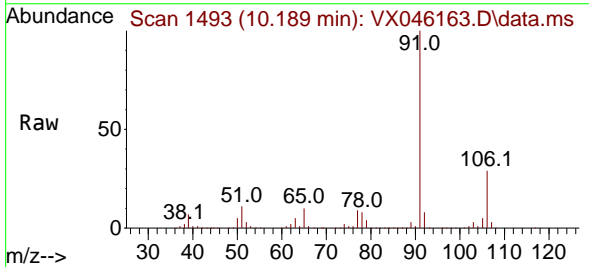


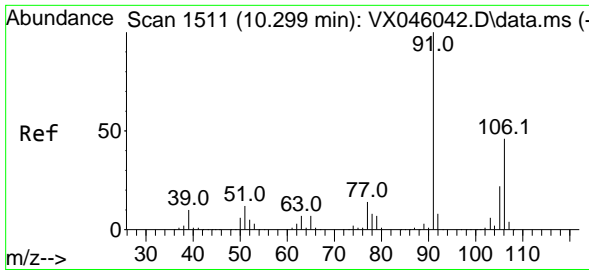
Tgt Ion:117 Resp: 113675  
 Ion Ratio Lower Upper  
 117 100  
 82 64.0 50.6 76.0  
 119 31.1 25.8 38.6



#67  
 Ethyl Benzene  
 Concen: 230.797 ug/l  
 RT: 10.189 min Scan# 1493  
 Delta R.T. -0.000 min  
 Lab File: VX046163.D  
 Acq: 13 May 2025 14:01

Tgt Ion: 91 Resp: 1012226  
 Ion Ratio Lower Upper  
 91 100  
 106 29.0 23.4 35.2

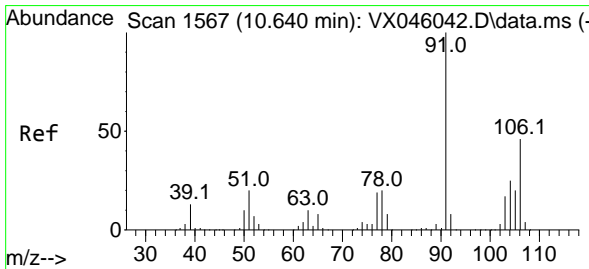
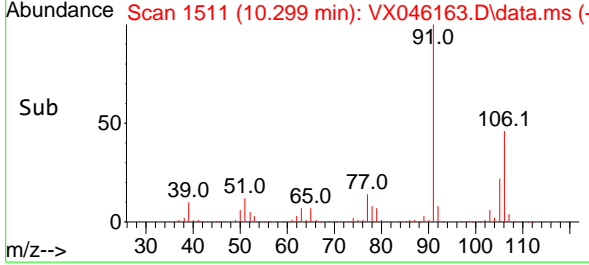
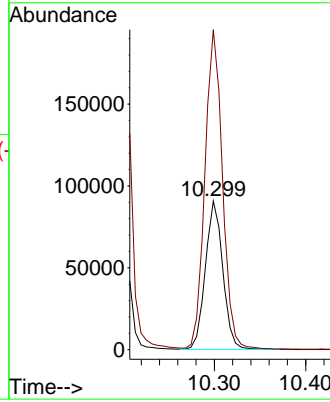
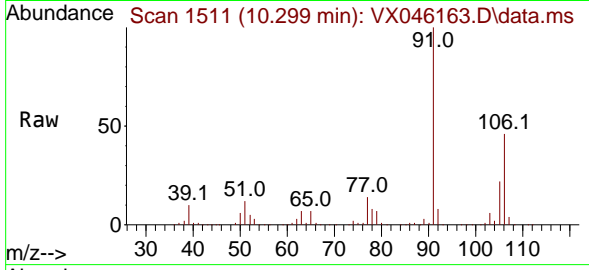




#68  
 m/p-Xylenes  
 Concen: 74.753 ug/l  
 RT: 10.299 min Scan# 1511  
 Delta R.T. -0.000 min  
 Lab File: VX046163.D  
 Acq: 13 May 2025 14:01

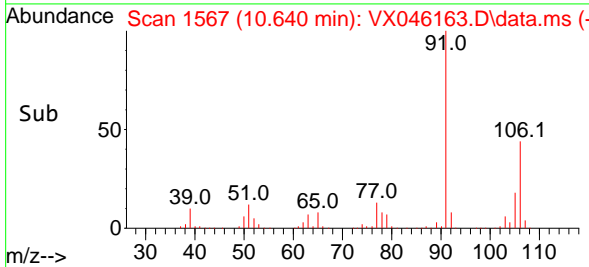
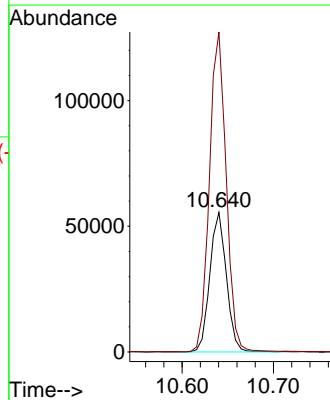
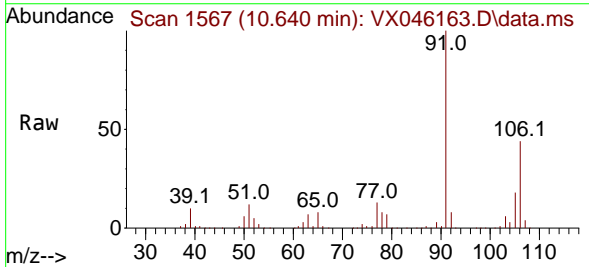
Instrument :  
 MSVOA\_X  
 ClientSampleId :  
 WC-A4-03-G

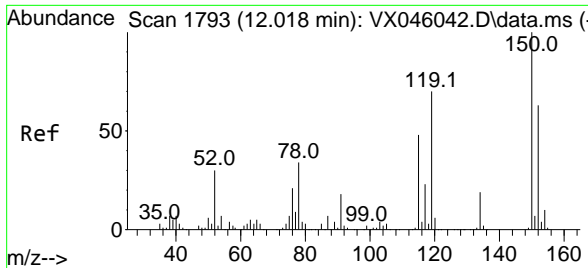
Tgt Ion:106 Resp: 119909  
 Ion Ratio Lower Upper  
 106 100  
 91 217.5 171.2 256.8



#69  
 o-Xylene  
 Concen: 44.705 ug/l  
 RT: 10.640 min Scan# 1567  
 Delta R.T. -0.000 min  
 Lab File: VX046163.D  
 Acq: 13 May 2025 14:01

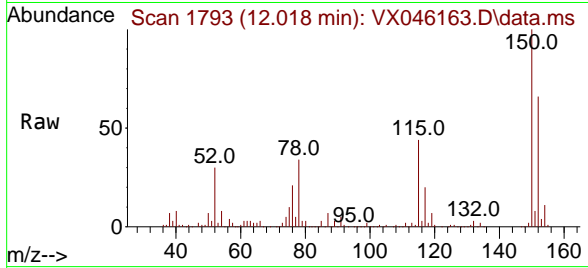
Tgt Ion:106 Resp: 69910  
 Ion Ratio Lower Upper  
 106 100  
 91 231.3 112.7 338.1



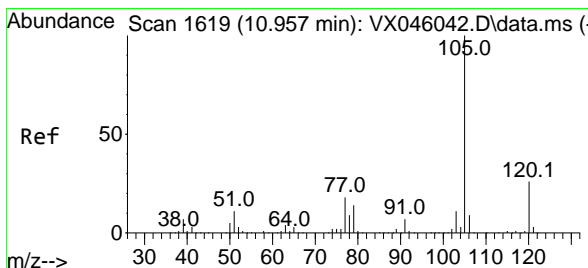
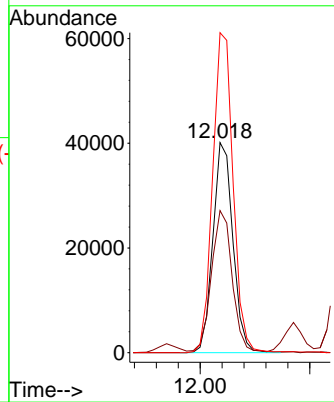
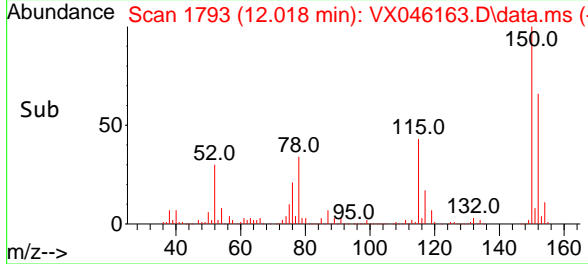


#72  
 1,4-Dichlorobenzene-d4  
 Concen: 50.000 ug/l  
 RT: 12.018 min Scan# 11  
 Delta R.T. -0.000 min  
 Lab File: VX046163.D  
 Acq: 13 May 2025 14:01

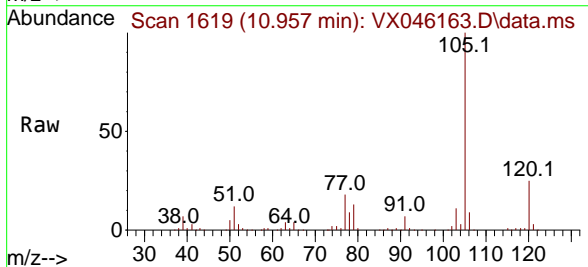
Instrument : MSVOA\_X  
 ClientSampleId : WC-A4-03-G



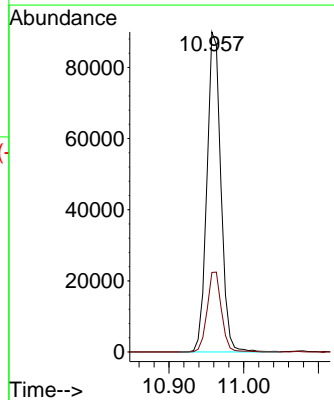
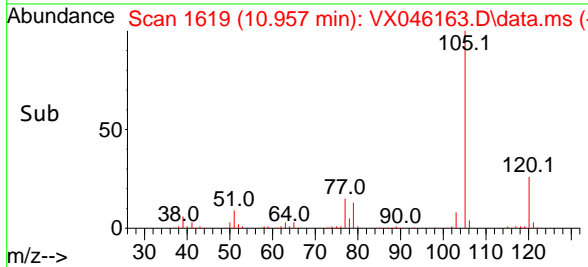
Tgt Ion:152 Resp: 50921  
 Ion Ratio Lower Upper  
 152 100  
 115 68.5 46.9 140.7  
 150 155.0 0.0 351.0

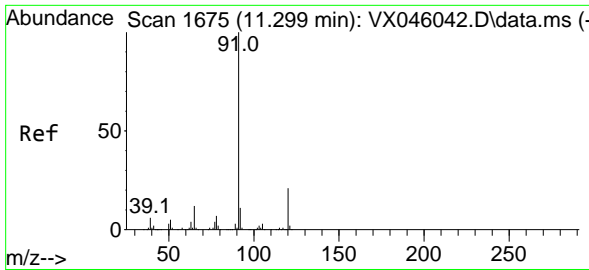


#73  
 Isopropylbenzene  
 Concen: 29.444 ug/l  
 RT: 10.957 min Scan# 1619  
 Delta R.T. -0.000 min  
 Lab File: VX046163.D  
 Acq: 13 May 2025 14:01



Tgt Ion:105 Resp: 116726  
 Ion Ratio Lower Upper  
 105 100  
 120 25.5 12.8 38.4

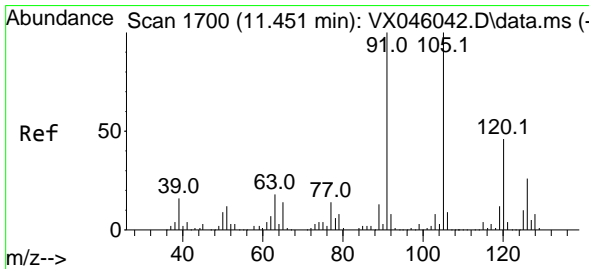
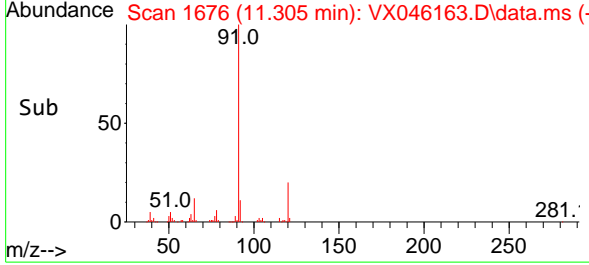
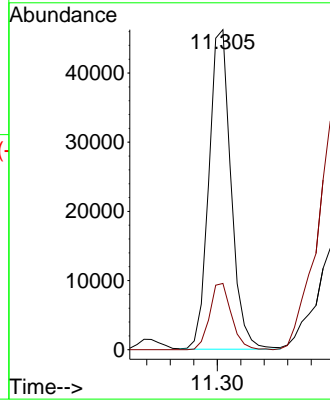
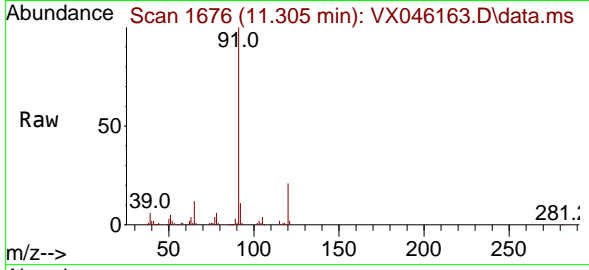




#78  
 n-propylbenzene  
 Concen: 13.130 ug/l  
 RT: 11.305 min Scan# 1  
 Delta R.T. 0.006 min  
 Lab File: VX046163.D  
 Acq: 13 May 2025 14:01

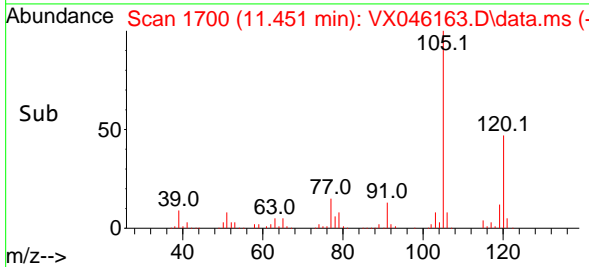
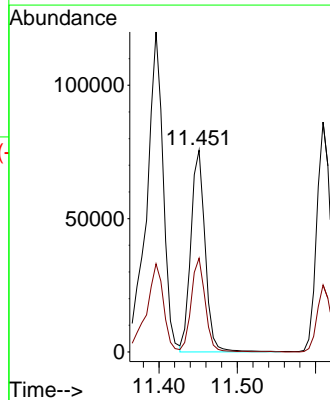
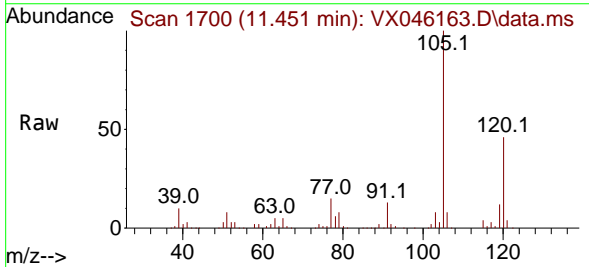
Instrument :  
 MSVOA\_X  
 ClientSampleId :  
 WC-A4-03-G

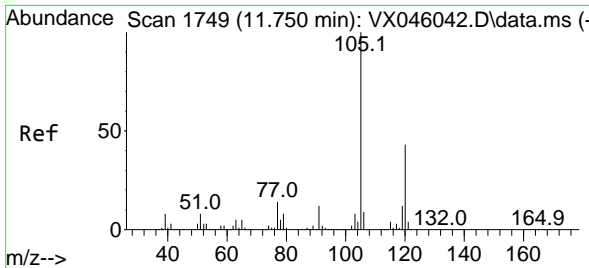
Tgt Ion: 91 Resp: 60523  
 Ion Ratio Lower Upper  
 91 100  
 120 20.5 10.8 32.4



#80  
 1,3,5-Trimethylbenzene  
 Concen: 29.028 ug/l  
 RT: 11.451 min Scan# 1700  
 Delta R.T. -0.000 min  
 Lab File: VX046163.D  
 Acq: 13 May 2025 14:01

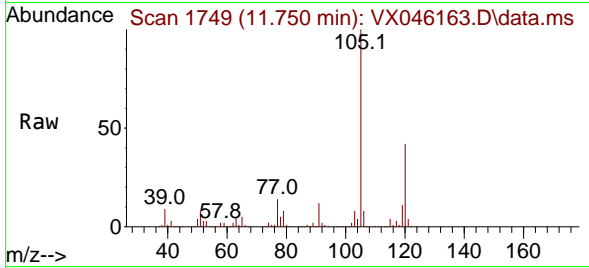
Tgt Ion: 105 Resp: 96138  
 Ion Ratio Lower Upper  
 105 100  
 120 45.2 23.1 69.2



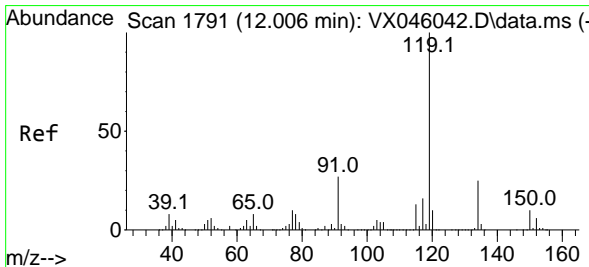
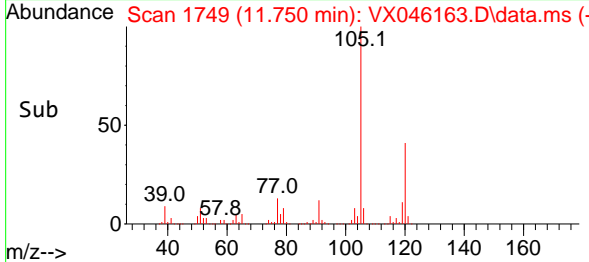
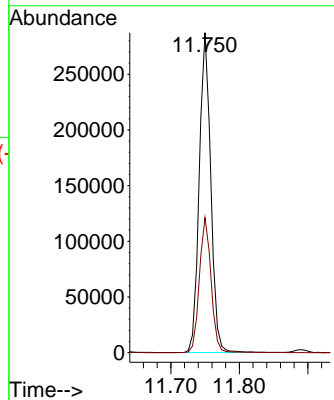


#84  
 1,2,4-Trimethylbenzene  
 Concen: 100.472 ug/l  
 RT: 11.750 min Scan# 1749  
 Delta R.T. -0.000 min  
 Lab File: VX046163.D  
 Acq: 13 May 2025 14:01

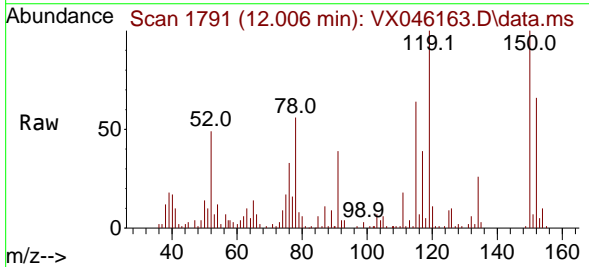
Instrument : MSVOA\_X  
 ClientSampleId : WC-A4-03-G



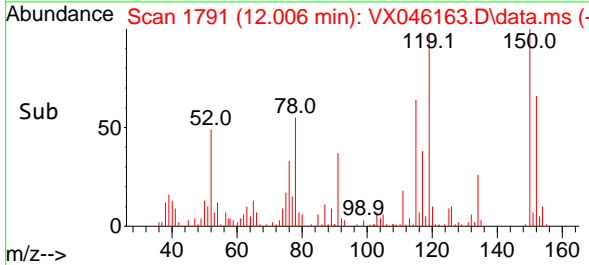
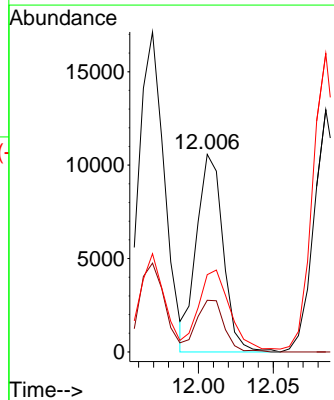
Tgt Ion:105 Resp: 336977  
 Ion Ratio Lower Upper  
 105 100  
 120 42.7 21.2 63.6

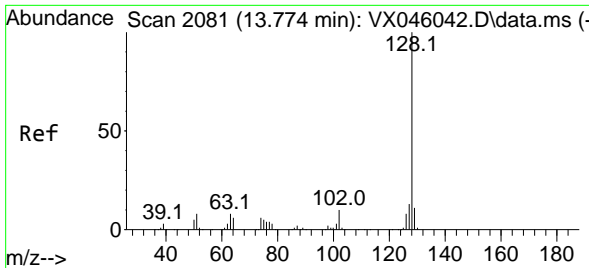


#86  
 p-Isopropyltoluene  
 Concen: 3.879 ug/l  
 RT: 12.006 min Scan# 1791  
 Delta R.T. -0.000 min  
 Lab File: VX046163.D  
 Acq: 13 May 2025 14:01



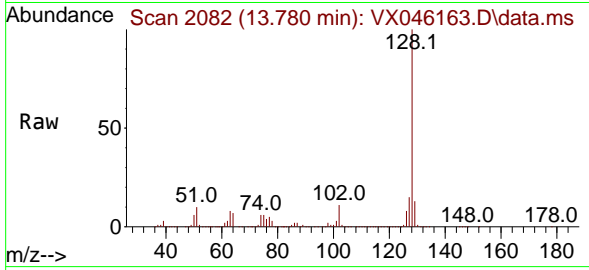
Tgt Ion:119 Resp: 13115  
 Ion Ratio Lower Upper  
 119 100  
 134 27.3 12.5 37.5  
 91 0.0 13.8 41.4#





#95  
 Naphthalene  
 Concen: 2370.244 ug/l  
 RT: 13.780 min Scan# 2082  
 Delta R.T. 0.006 min  
 Lab File: VX046163.D  
 Acq: 13 May 2025 14:01

Instrument :  
 MSVOA\_X  
 ClientSampleId :  
 WC-A4-03-G



Tgt Ion:128 Resp: 8416185

Ion	Ratio	Lower	Upper
128	100		
127	14.0	10.4	15.6
129	12.3	8.6	13.0

