

Data Path : Z:\voasrv\HPCHEM1\MSVOA_X\Data\VX051325\
 Data File : VX046164.D
 Acq On : 13 May 2025 14:25
 Operator : JC/MD
 Sample : Q2001-05
 Misc : 5.0mL/MSVOA_X/WATER
 ALS Vial : 13 Sample Multiplier: 1

Instrument :
 MSVOA_X
 ClientSampleId :
 WC-A1-05-G

Quant Time: May 14 01:40:01 2025
 Quant Method : Z:\voasrv\HPCHEM1\MSVOA_X\Method\82X050525W.M
 Quant Title : SW846 8260
 QLast Update : Tue May 06 07:12:22 2025
 Response via : Initial Calibration

Compound	R.T.	QIon	Response	Conc	Units	Dev(Min)

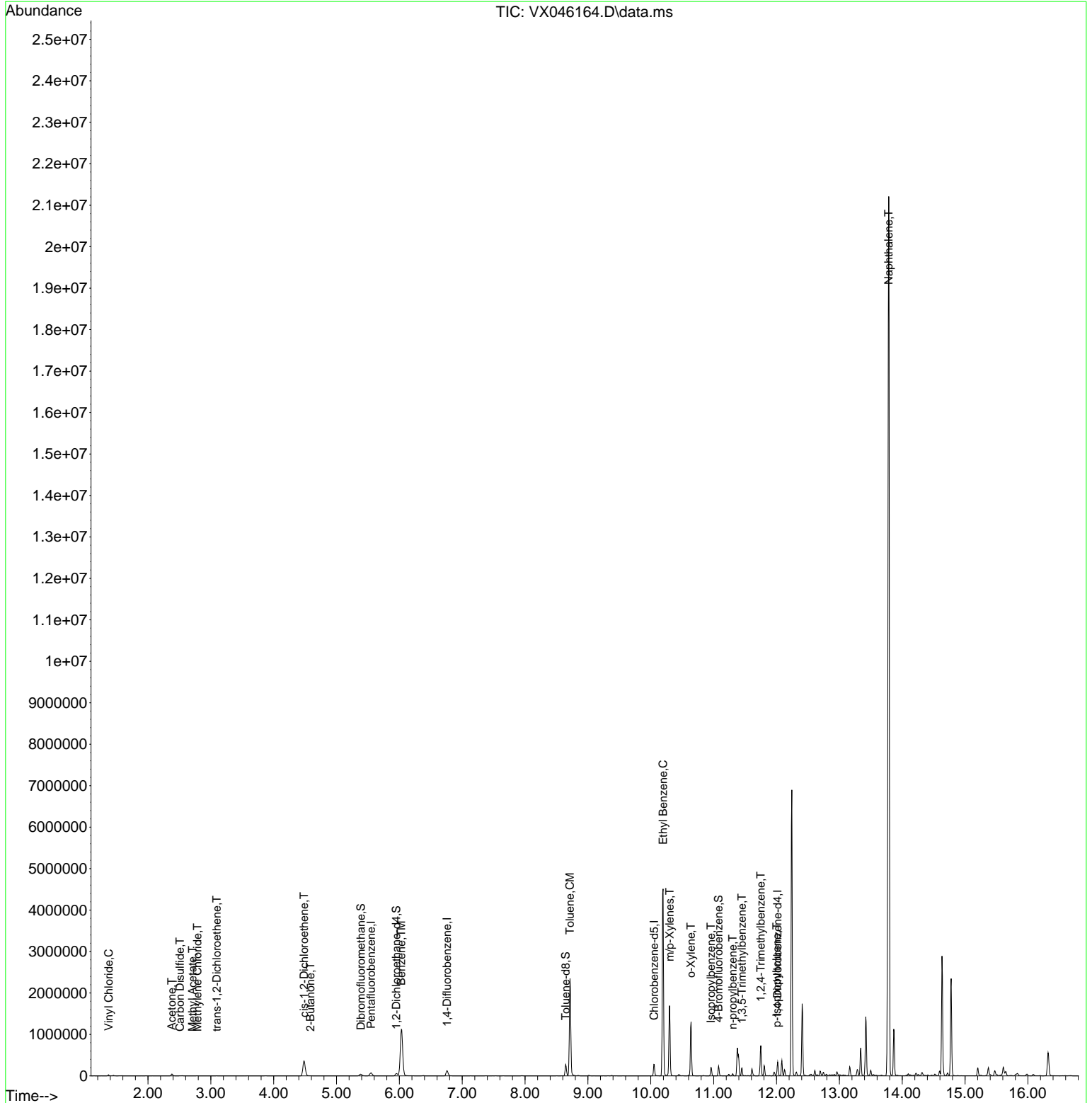
Internal Standards						
1) Pentafluorobenzene	5.550	168	61818	50.000	ug/l	0.00
34) 1,4-Difluorobenzene	6.757	114	120158	50.000	ug/l	0.00
63) Chlorobenzene-d5	10.055	117	115770	50.000	ug/l	0.00
72) 1,4-Dichlorobenzene-d4	12.018	152	55282	50.000	ug/l	0.00
System Monitoring Compounds						
33) 1,2-Dichloroethane-d4	5.952	65	59426	51.563	ug/l	0.00
Spiked Amount	50.000	Range 74 - 125	Recovery	=	103.120%	
35) Dibromofluoromethane	5.385	113	35337	40.840	ug/l	0.00
Spiked Amount	50.000	Range 75 - 124	Recovery	=	81.680%	
50) Toluene-d8	8.647	98	154690	51.653	ug/l	0.00
Spiked Amount	50.000	Range 86 - 113	Recovery	=	103.300%	
62) 4-Bromofluorobenzene	11.079	95	62153	54.104	ug/l	0.00
Spiked Amount	50.000	Range 77 - 121	Recovery	=	108.200%	
Target Compounds						
						Qvalue
4) Vinyl Chloride	1.374	62	17496	20.488	ug/l	95
16) Acetone	2.379	43	50817	109.971	ug/l	100
17) Carbon Disulfide	2.508	76	4387	2.524	ug/l	98
18) Methyl Acetate	2.709	43	1155	1.077	ug/l #	91
20) Methylene Chloride	2.788	84	1908	2.155	ug/l	84
21) trans-1,2-Dichloroethene	3.093	96	821	1.114	ug/l	89
25) 2-Butanone	4.586	43	3521	5.248	ug/l #	85
27) cis-1,2-Dichloroethene	4.483	96	213621	240.725	ug/l	89
40) Benzene	6.031	78	1298368	381.282	ug/l	100
52) Toluene	8.714	92	836452	400.589	ug/l	100
67) Ethyl Benzene	10.195	91	2629812	588.770	ug/l	97
68) m/p-Xylenes	10.299	106	355634	217.695	ug/l	99
69) o-Xylene	10.640	106	257750	161.839	ug/l	97
73) Isopropylbenzene	10.957	105	104495	24.279	ug/l	100
78) n-propylbenzene	11.305	91	30257	6.046	ug/l	99
80) 1,3,5-Trimethylbenzene	11.451	105	83484	23.219	ug/l	100
84) 1,2,4-Trimethylbenzene	11.750	105	300865	82.628	ug/l	99
86) p-Isopropyltoluene	12.006	119	13281	3.618	ug/l #	72
95) Naphthalene	13.786	128	13588910	3525.134	ug/l #	94

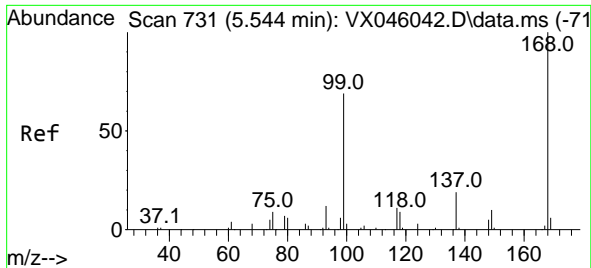
(#) = qualifier out of range (m) = manual integration (+) = signals summed

Data Path : Z:\voasrv\HPCHEM1\MSVOA_X\Data\VX051325\
 Data File : VX046164.D
 Acq On : 13 May 2025 14:25
 Operator : JC/MD
 Sample : Q2001-05
 Misc : 5.0mL/MSVOA_X/WATER
 ALS Vial : 13 Sample Multiplier: 1

Instrument :
 MSVOA_X
 ClientSampleId :
 WC-A1-05-G

Quant Time: May 14 01:40:01 2025
 Quant Method : Z:\voasrv\HPCHEM1\MSVOA_X\Method\82X050525W.M
 Quant Title : SW846 8260
 QLast Update : Tue May 06 07:12:22 2025
 Response via : Initial Calibration

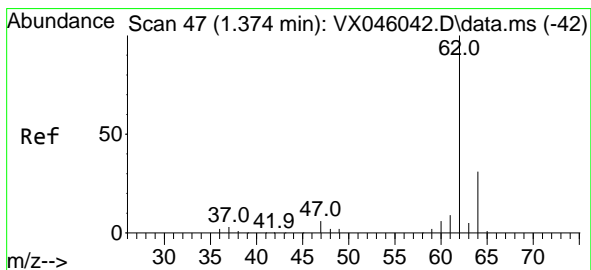
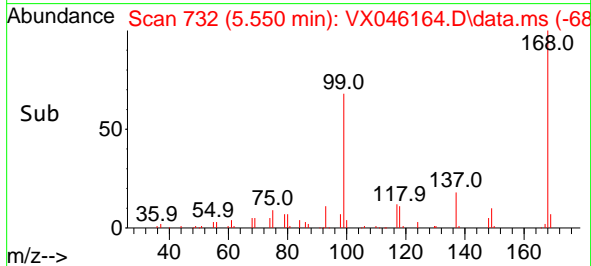
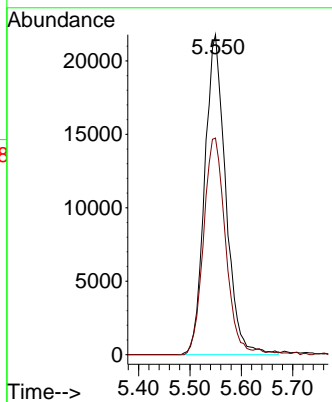
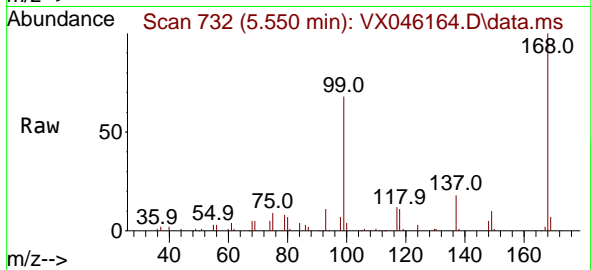




#1
 Pentafluorobenzene
 Concen: 50.000 ug/l
 RT: 5.550 min Scan# 71
 Delta R.T. 0.006 min
 Lab File: VX046164.D
 Acq: 13 May 2025 14:25

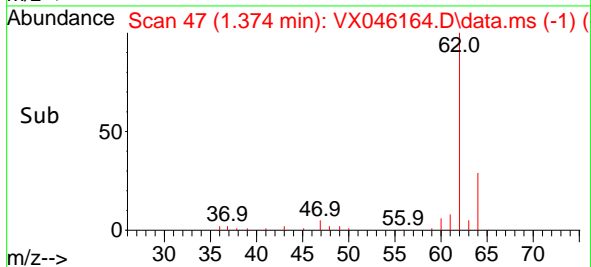
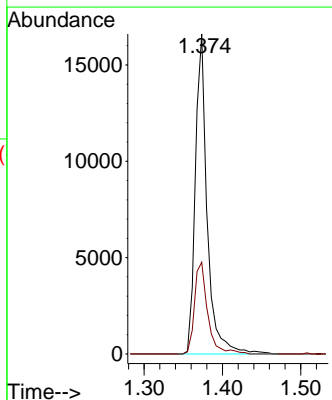
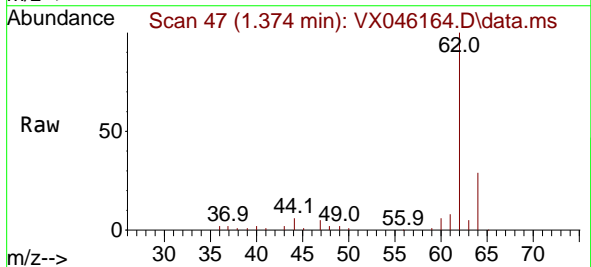
Instrument : MSVOA_X
 ClientSampleId : WC-A1-05-G

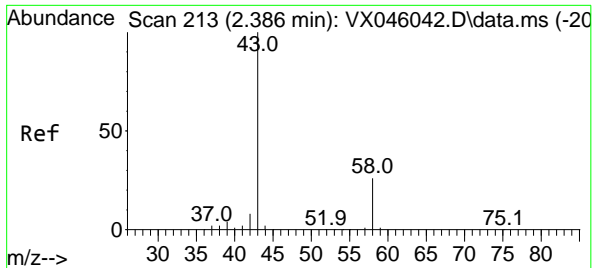
Tgt Ion:168 Resp: 61818
 Ion Ratio Lower Upper
 168 100
 99 67.7 54.9 82.3



#4
 Vinyl Chloride
 Concen: 20.488 ug/l
 RT: 1.374 min Scan# 47
 Delta R.T. -0.000 min
 Lab File: VX046164.D
 Acq: 13 May 2025 14:25

Tgt Ion: 62 Resp: 17496
 Ion Ratio Lower Upper
 62 100
 64 28.7 25.2 37.8

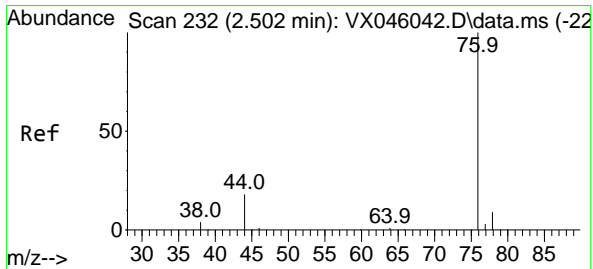
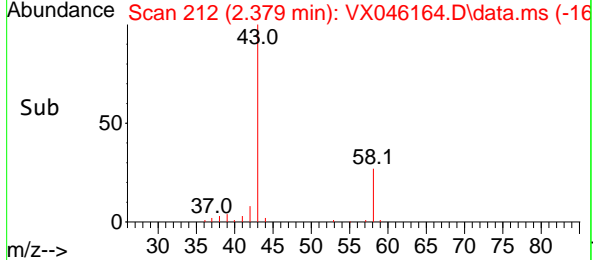
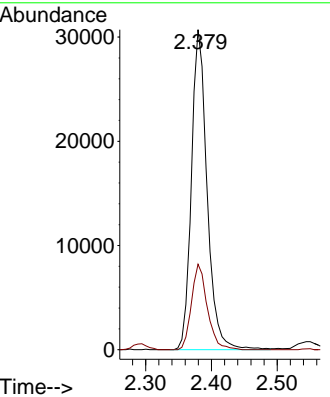
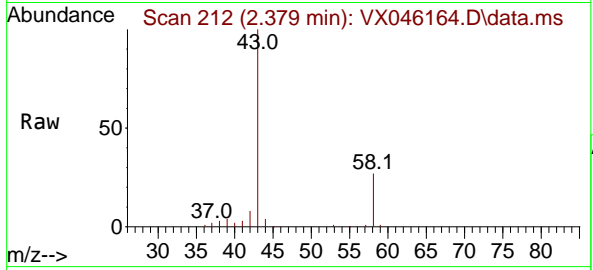




#16
 Acetone
 Concen: 109.971 ug/l
 RT: 2.379 min Scan# 211
 Delta R.T. -0.006 min
 Lab File: VX046164.D
 Acq: 13 May 2025 14:25

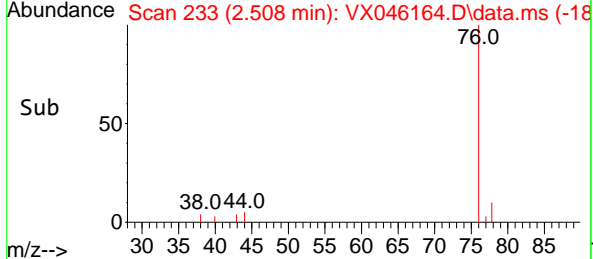
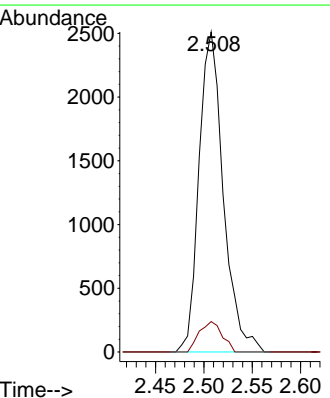
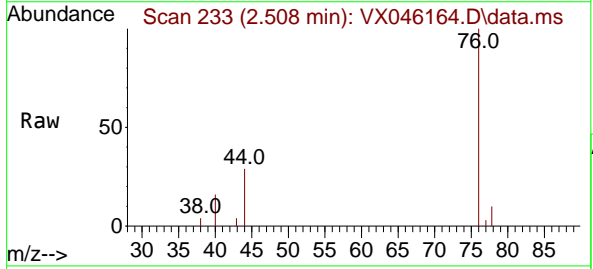
Instrument : MSVOA_X
 ClientSampleId : WC-A1-05-G

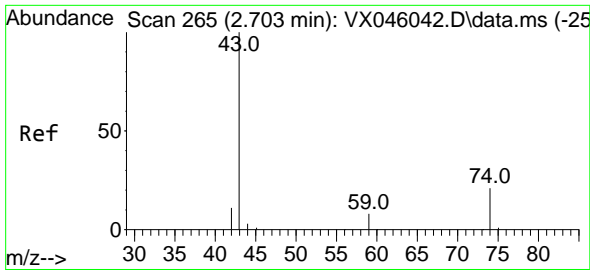
Tgt Ion: 43 Resp: 50817
 Ion Ratio Lower Upper
 43 100
 58 26.7 21.2 31.8



#17
 Carbon Disulfide
 Concen: 2.524 ug/l
 RT: 2.508 min Scan# 233
 Delta R.T. 0.006 min
 Lab File: VX046164.D
 Acq: 13 May 2025 14:25

Tgt Ion: 76 Resp: 4387
 Ion Ratio Lower Upper
 76 100
 78 9.5 7.0 10.4

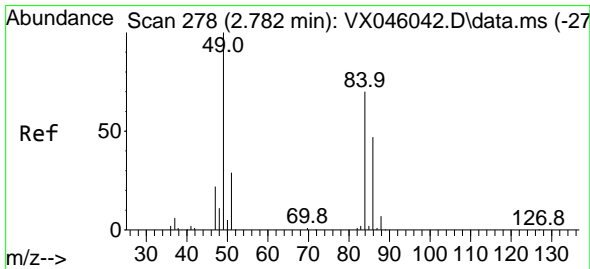
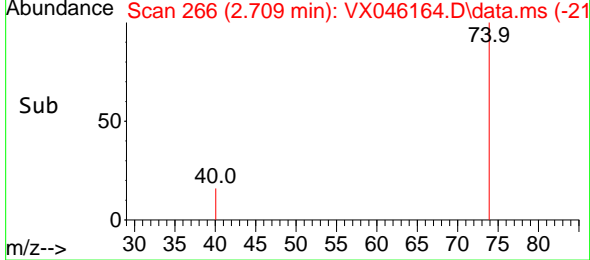
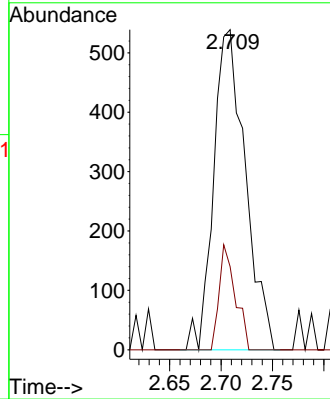
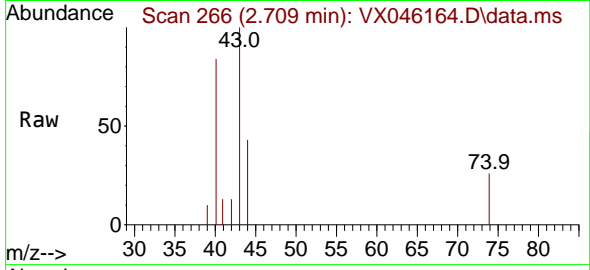




#18
 Methyl Acetate
 Concen: 1.077 ug/l
 RT: 2.709 min Scan# 20
 Delta R.T. 0.006 min
 Lab File: VX046164.D
 Acq: 13 May 2025 14:25

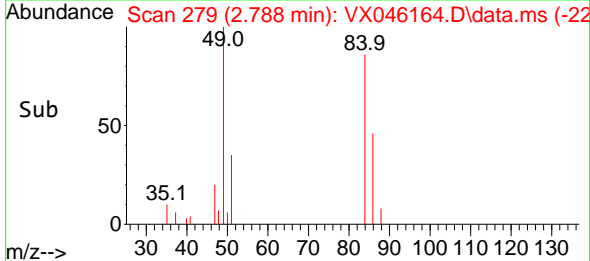
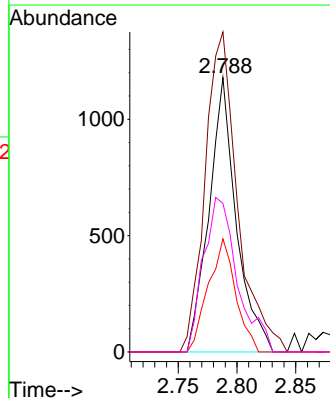
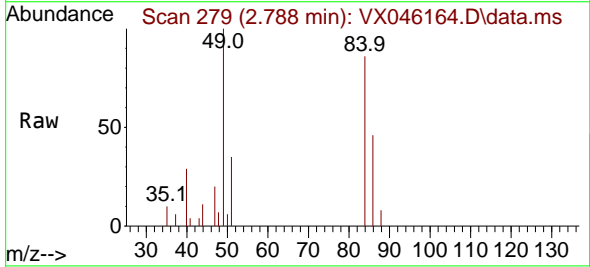
Instrument :
 MSVOA_X
 ClientSampleId :
 WC-A1-05-G

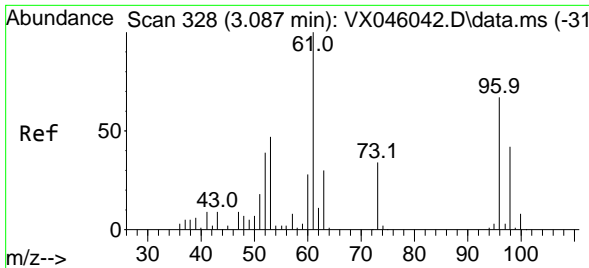
Tgt Ion: 43 Resp: 1155
 Ion Ratio Lower Upper
 43 100
 74 16.7 16.7 25.1#



#20
 Methylene Chloride
 Concen: 2.155 ug/l
 RT: 2.788 min Scan# 279
 Delta R.T. 0.006 min
 Lab File: VX046164.D
 Acq: 13 May 2025 14:25

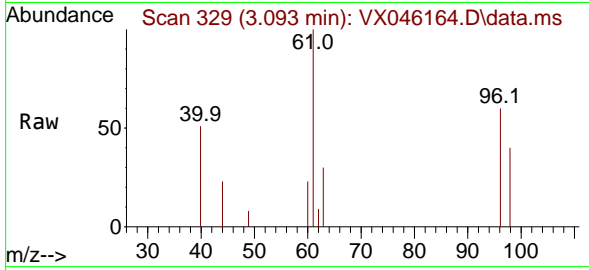
Tgt Ion: 84 Resp: 1908
 Ion Ratio Lower Upper
 84 100
 49 116.6 113.9 170.9
 51 41.2 33.5 50.3
 86 54.2 53.8 80.8



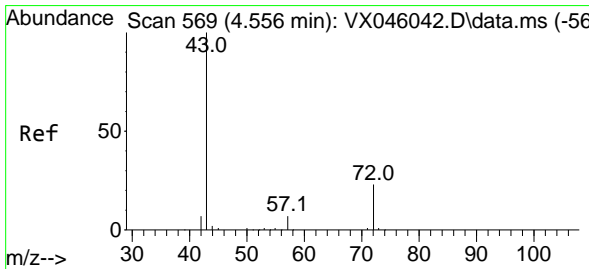
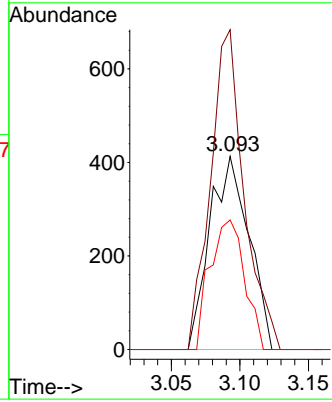
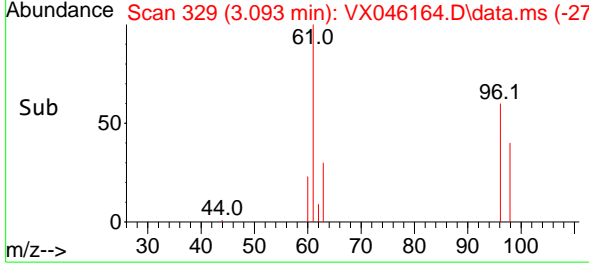


#21
 trans-1,2-Dichloroethene
 Concen: 1.114 ug/l
 RT: 3.093 min Scan# 311
 Delta R.T. 0.006 min
 Lab File: VX046164.D
 Acq: 13 May 2025 14:25

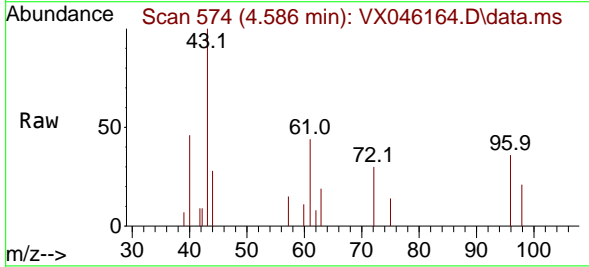
Instrument : MSVOA_X
 ClientSampleId : WC-A1-05-G



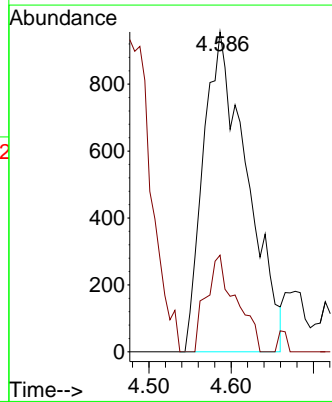
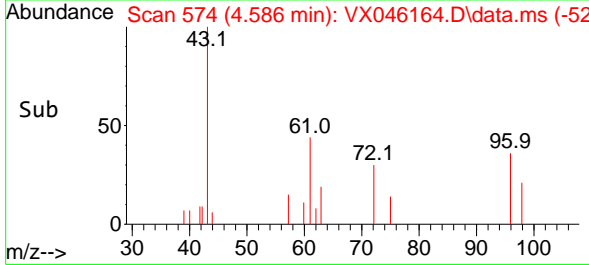
Tgt Ion: 96 Resp: 821
 Ion Ratio Lower Upper
 96 100
 61 165.6 119.5 179.3
 98 67.1 50.0 75.0

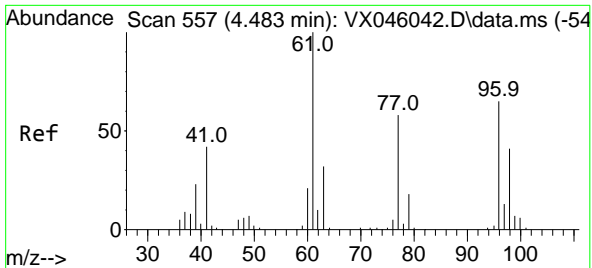


#25
 2-Butanone
 Concen: 5.248 ug/l
 RT: 4.586 min Scan# 574
 Delta R.T. 0.030 min
 Lab File: VX046164.D
 Acq: 13 May 2025 14:25



Tgt Ion: 43 Resp: 3521
 Ion Ratio Lower Upper
 43 100
 72 30.2 18.4 27.6#



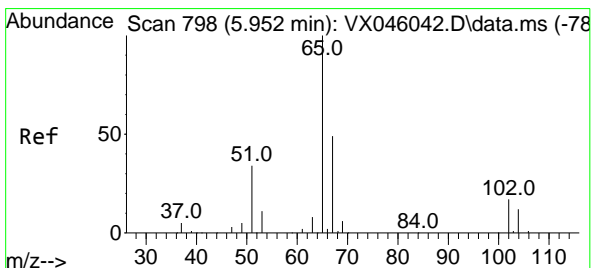
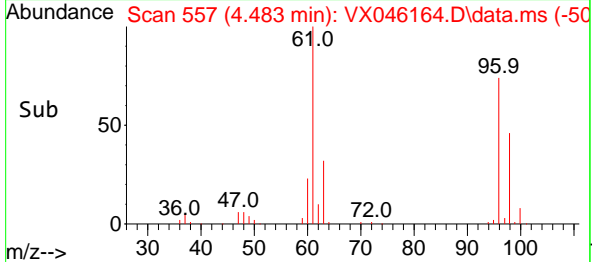
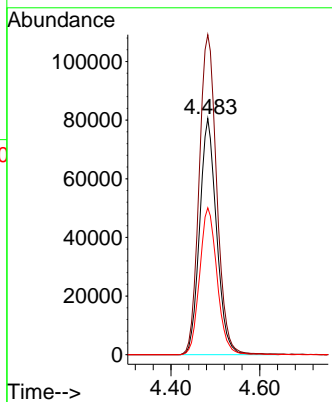
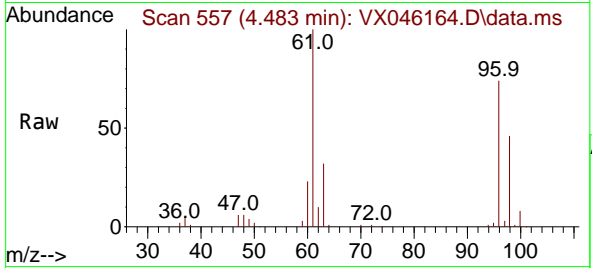


#27
 cis-1,2-Dichloroethene
 Concen: 240.725 ug/l
 RT: 4.483 min Scan# 51
 Delta R.T. -0.000 min
 Lab File: VX046164.D
 Acq: 13 May 2025 14:25

Instrument :
 MSVOA_X
 ClientSampleId :
 WC-A1-05-G

Tgt Ion: 96 Resp: 213621

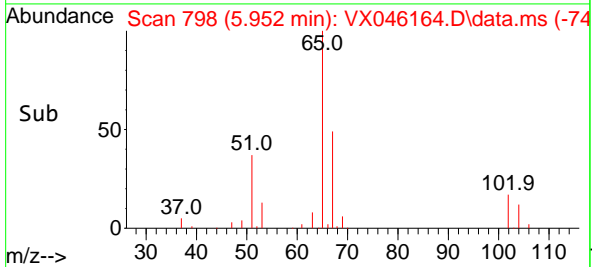
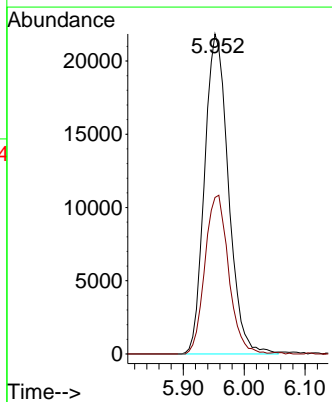
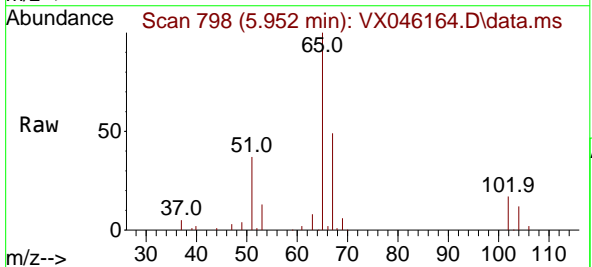
Ion	Ratio	Lower	Upper
96	100		
61	140.6	0.0	322.8
98	63.9	0.0	129.0

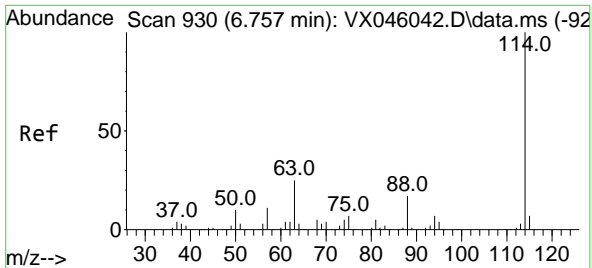


#33
 1,2-Dichloroethane-d4
 Concen: 51.563 ug/l
 RT: 5.952 min Scan# 798
 Delta R.T. -0.000 min
 Lab File: VX046164.D
 Acq: 13 May 2025 14:25

Tgt Ion: 65 Resp: 59426

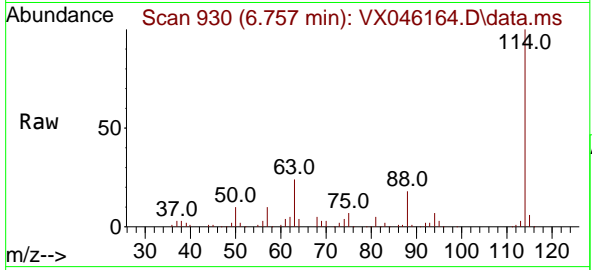
Ion	Ratio	Lower	Upper
65	100		
67	49.4	0.0	99.0





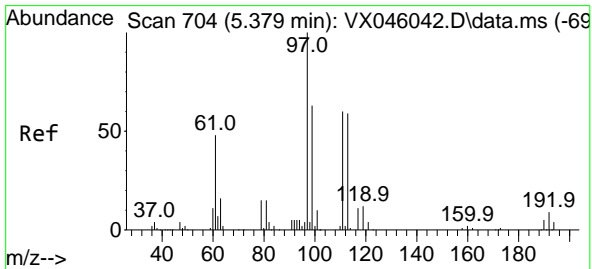
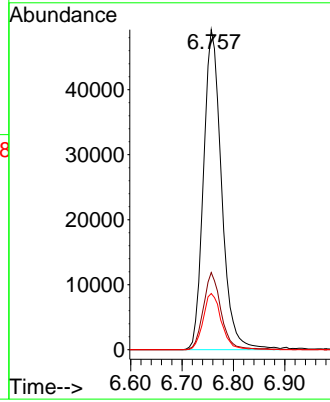
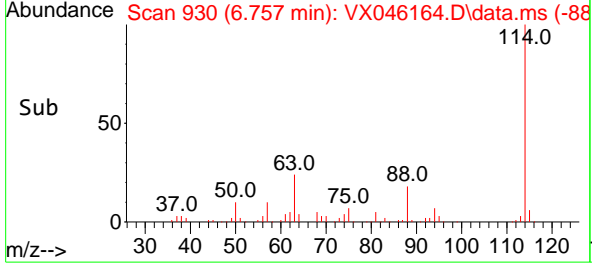
#34
 1,4-Difluorobenzene
 Concen: 50.000 ug/l
 RT: 6.757 min Scan# 91
 Delta R.T. -0.000 min
 Lab File: VX046164.D
 Acq: 13 May 2025 14:25

Instrument :
 MSVOA_X
 ClientSampleId :
 WC-A1-05-G

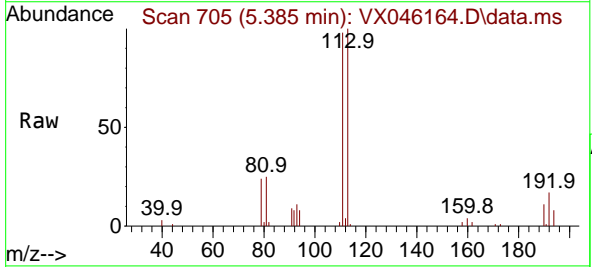


Tgt Ion:114 Resp: 120158

Ion	Ratio	Lower	Upper
114	100		
63	24.1	0.0	49.2
88	17.6	0.0	33.6

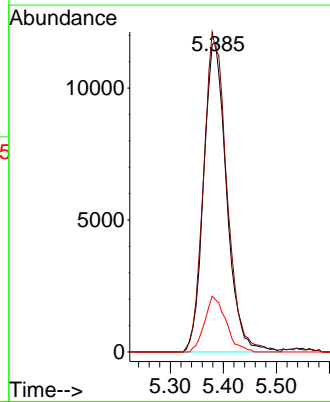
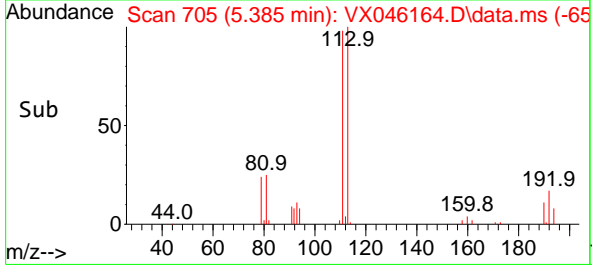


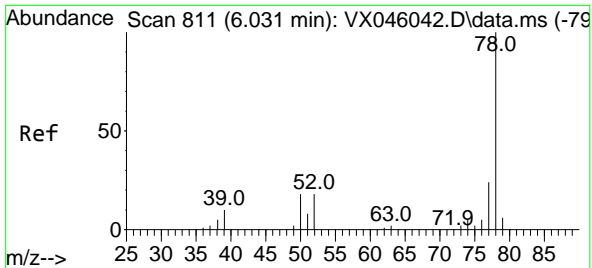
#35
 Dibromofluoromethane
 Concen: 40.840 ug/l
 RT: 5.385 min Scan# 705
 Delta R.T. 0.006 min
 Lab File: VX046164.D
 Acq: 13 May 2025 14:25



Tgt Ion:113 Resp: 35337

Ion	Ratio	Lower	Upper
113	100		
111	104.4	83.1	124.7
192	16.7	13.3	19.9





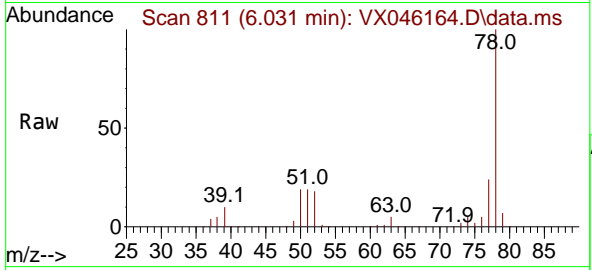
#40
Benzene
Concen: 381.282 ug/l
RT: 6.031 min Scan# 811
Delta R.T. -0.000 min
Lab File: VX046164.D
Acq: 13 May 2025 14:25

Instrument :

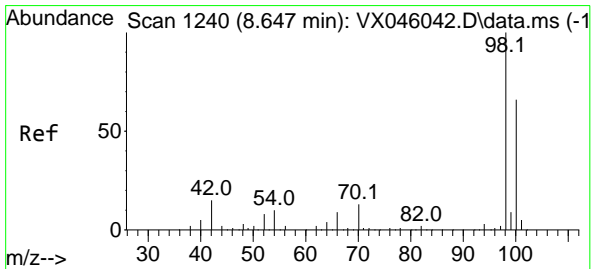
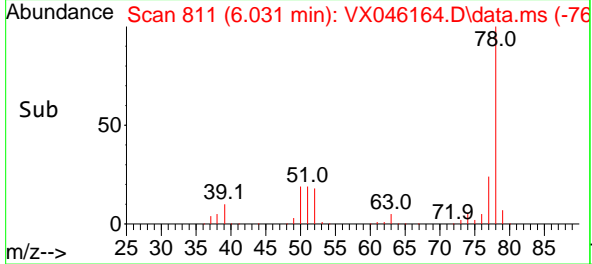
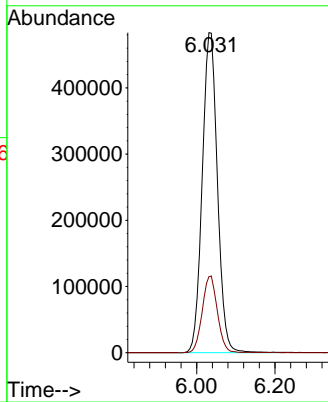
MSVOA_X

ClientSampleId :

WC-A1-05-G

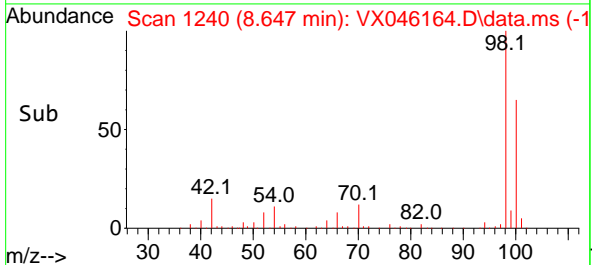
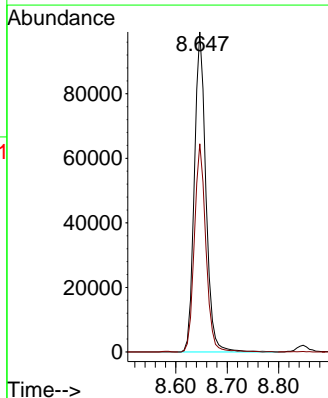
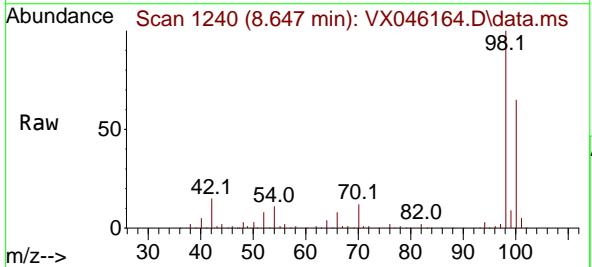


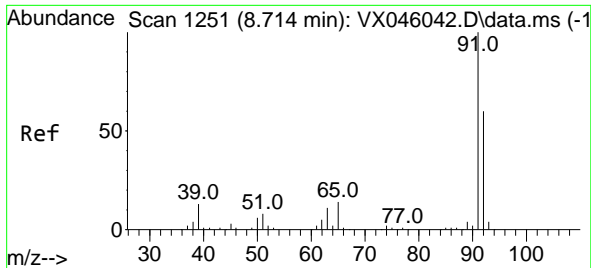
Tgt Ion: 78 Resp: 1298368
Ion Ratio Lower Upper
78 100
77 23.7 19.0 28.4



#50
Toluene-d8
Concen: 51.653 ug/l
RT: 8.647 min Scan# 1240
Delta R.T. -0.000 min
Lab File: VX046164.D
Acq: 13 May 2025 14:25

Tgt Ion: 98 Resp: 154690
Ion Ratio Lower Upper
98 100
100 64.8 53.5 80.3

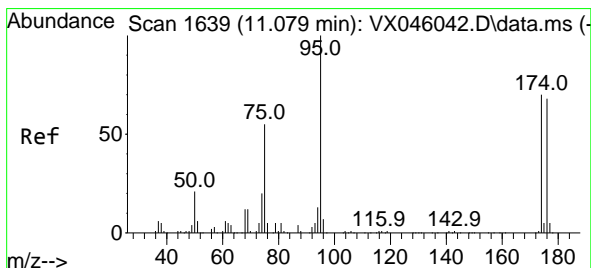
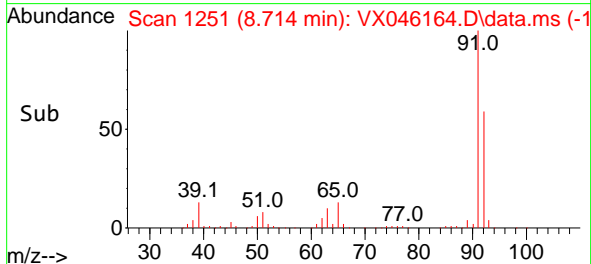
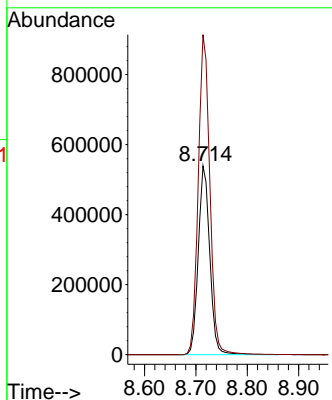
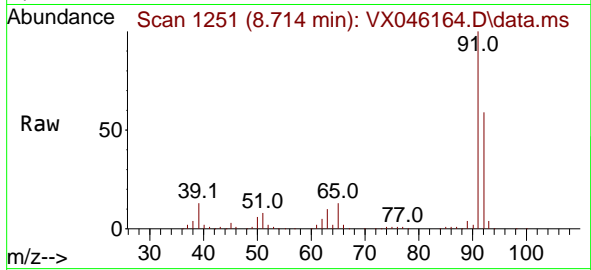




#52
 Toluene
 Concen: 400.589 ug/l
 RT: 8.714 min Scan# 11
 Delta R.T. -0.000 min
 Lab File: VX046164.D
 Acq: 13 May 2025 14:25

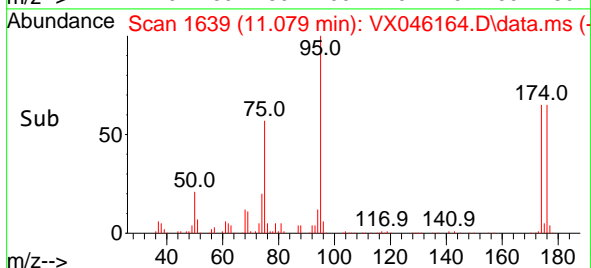
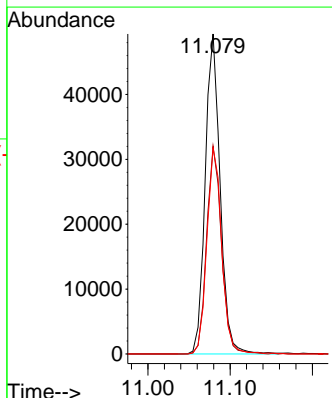
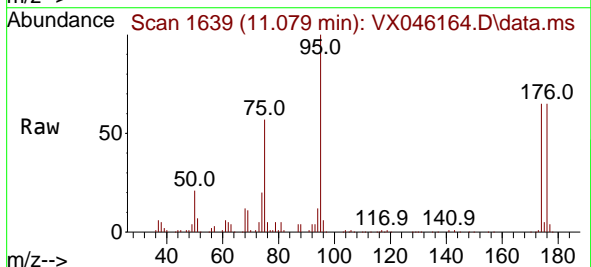
Instrument :
 MSVOA_X
 ClientSampleId :
 WC-A1-05-G

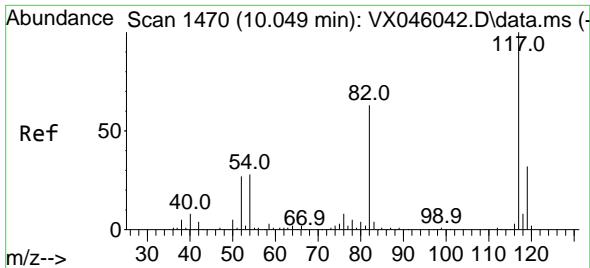
Tgt Ion: 92 Resp: 836452
 Ion Ratio Lower Upper
 92 100
 91 171.3 136.6 205.0



#62
 4-Bromofluorobenzene
 Concen: 54.104 ug/l
 RT: 11.079 min Scan# 1639
 Delta R.T. -0.000 min
 Lab File: VX046164.D
 Acq: 13 May 2025 14:25

Tgt Ion: 95 Resp: 62153
 Ion Ratio Lower Upper
 95 100
 174 64.6 0.0 135.8
 176 64.0 0.0 131.4



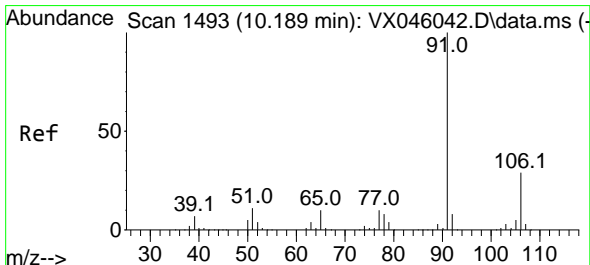
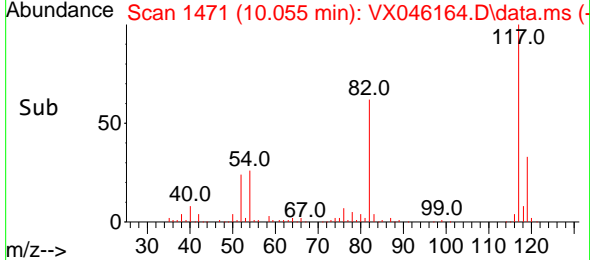
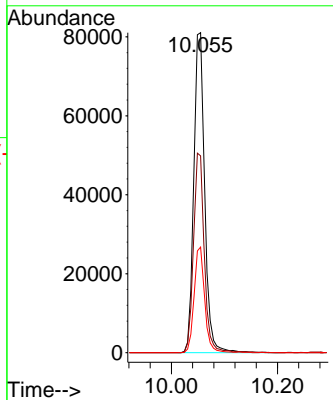
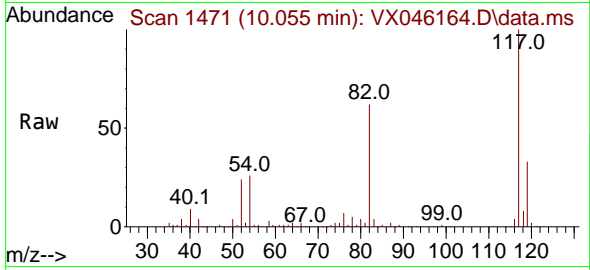


#63
 Chlorobenzene-d5
 Concen: 50.000 ug/l
 RT: 10.055 min Scan# 1471
 Delta R.T. 0.006 min
 Lab File: VX046164.D
 Acq: 13 May 2025 14:25

Instrument : MSVOA_X
 ClientSampleId : WC-A1-05-G

Tgt Ion: 117 Resp: 115770

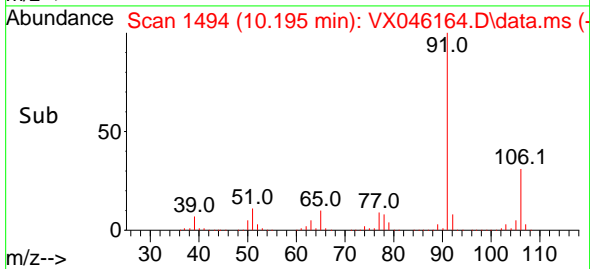
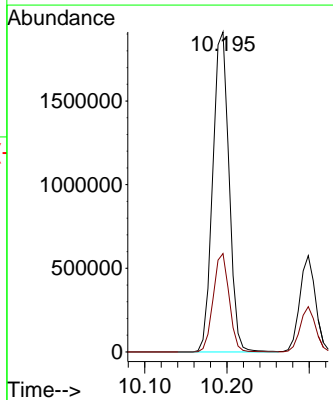
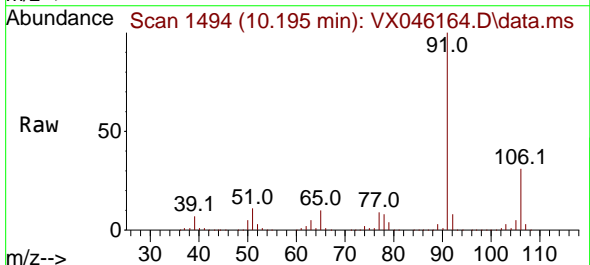
Ion	Ratio	Lower	Upper
117	100		
82	61.5	50.6	76.0
119	33.0	25.8	38.6

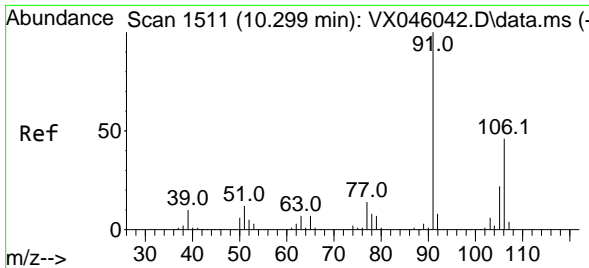


#67
 Ethyl Benzene
 Concen: 588.770 ug/l
 RT: 10.195 min Scan# 1494
 Delta R.T. 0.006 min
 Lab File: VX046164.D
 Acq: 13 May 2025 14:25

Tgt Ion: 91 Resp: 2629812

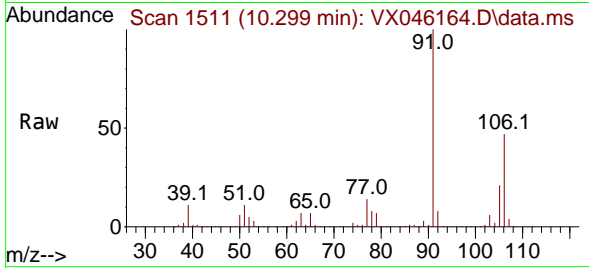
Ion	Ratio	Lower	Upper
91	100		
106	30.7	23.4	35.2



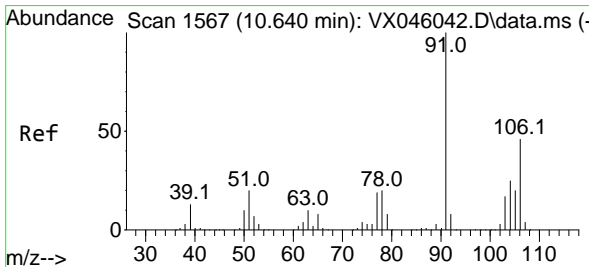
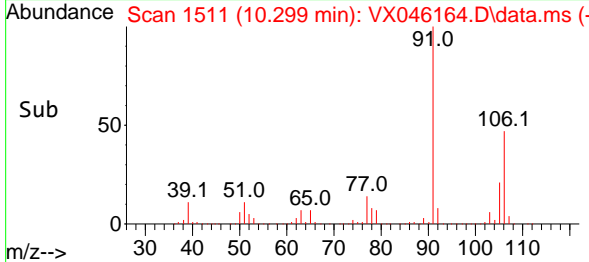
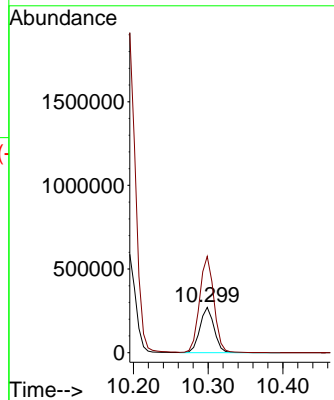


#68
 m/p-Xylenes
 Concen: 217.695 ug/l
 RT: 10.299 min Scan# 1511
 Delta R.T. -0.000 min
 Lab File: VX046164.D
 Acq: 13 May 2025 14:25

Instrument : MSVOA_X
 ClientSampleId : WC-A1-05-G

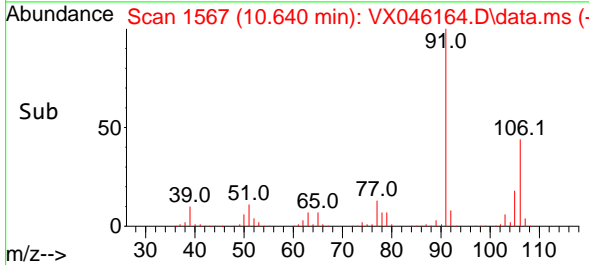
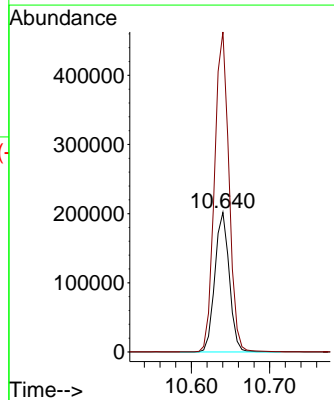
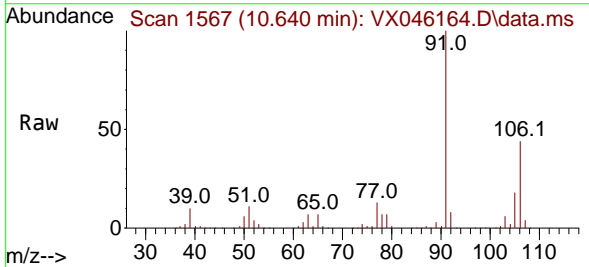


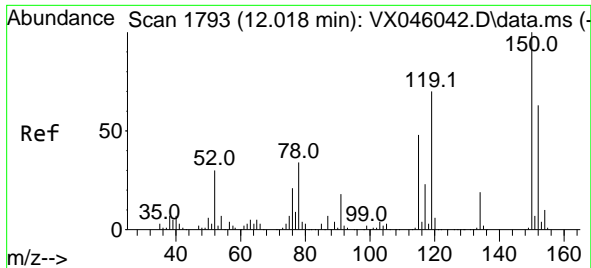
Tgt Ion:106 Resp: 355634
 Ion Ratio Lower Upper
 106 100
 91 215.8 171.2 256.8



#69
 o-Xylene
 Concen: 161.839 ug/l
 RT: 10.640 min Scan# 1567
 Delta R.T. -0.000 min
 Lab File: VX046164.D
 Acq: 13 May 2025 14:25

Tgt Ion:106 Resp: 257750
 Ion Ratio Lower Upper
 106 100
 91 229.9 112.7 338.1

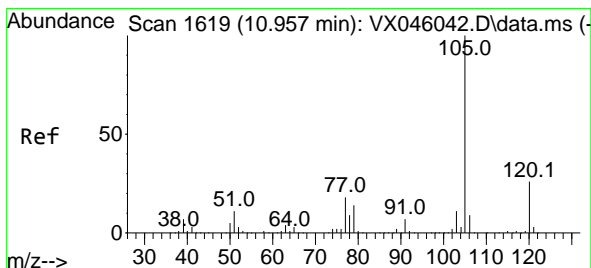
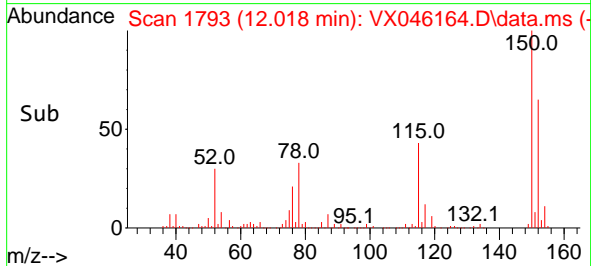
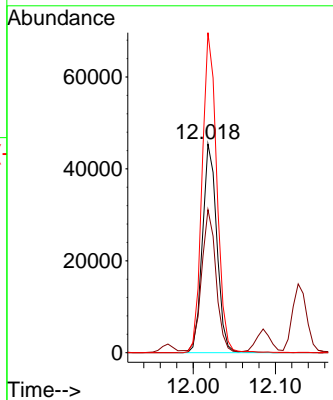
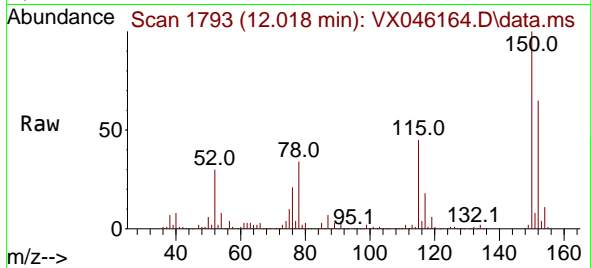




#72
 1,4-Dichlorobenzene-d4
 Concen: 50.000 ug/l
 RT: 12.018 min Scan# 1793
 Delta R.T. -0.000 min
 Lab File: VX046164.D
 Acq: 13 May 2025 14:25

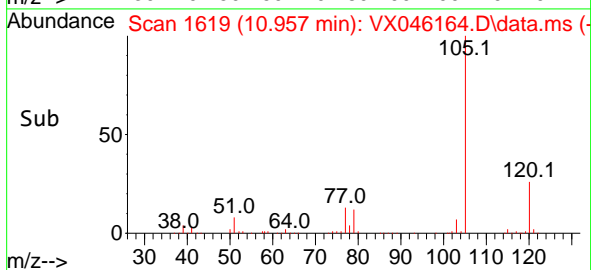
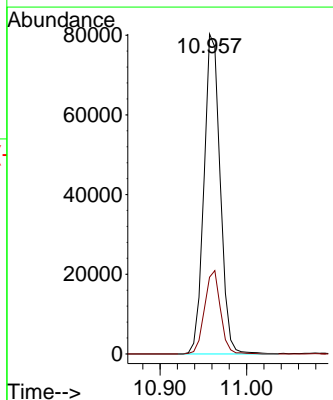
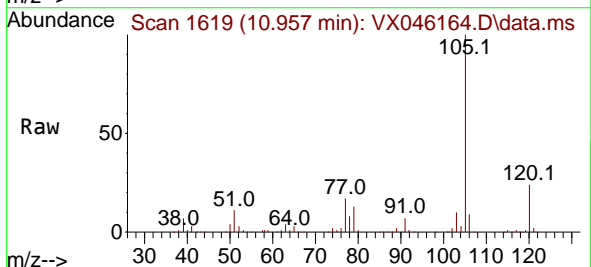
Instrument : MSVOA_X
 ClientSampleId : WC-A1-05-G

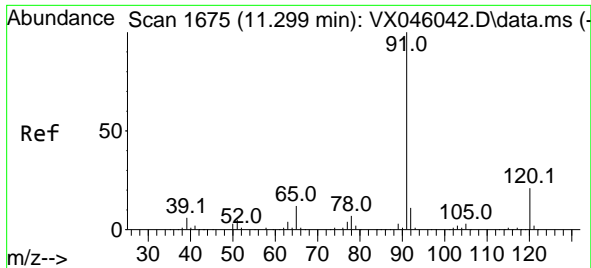
Tgt Ion:152 Resp: 55282
 Ion Ratio Lower Upper
 152 100
 115 67.3 46.9 140.7
 150 156.5 0.0 351.0



#73
 Isopropylbenzene
 Concen: 24.279 ug/l
 RT: 10.957 min Scan# 1619
 Delta R.T. -0.000 min
 Lab File: VX046164.D
 Acq: 13 May 2025 14:25

Tgt Ion:105 Resp: 104495
 Ion Ratio Lower Upper
 105 100
 120 25.5 12.8 38.4

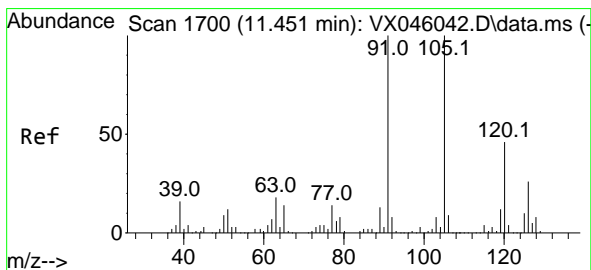
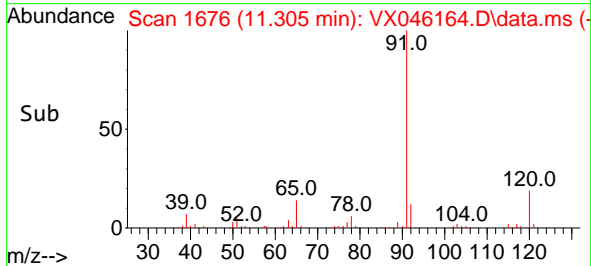
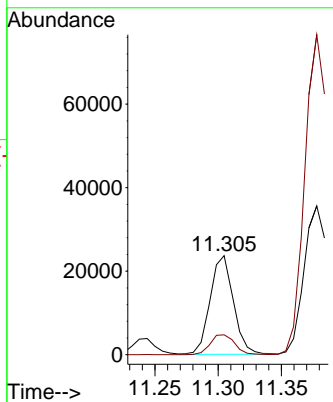
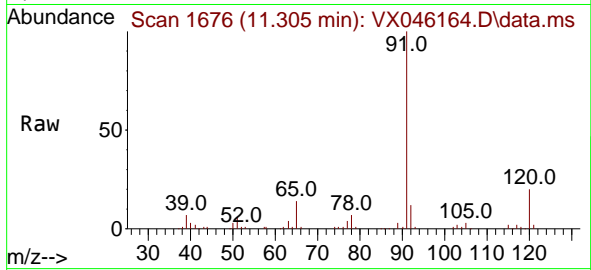




#78
 n-propylbenzene
 Concen: 6.046 ug/l
 RT: 11.305 min Scan# 1675
 Delta R.T. 0.006 min
 Lab File: VX046164.D
 Acq: 13 May 2025 14:25

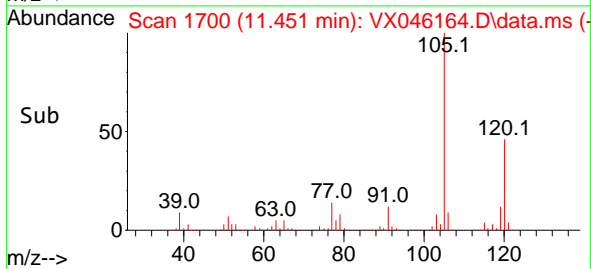
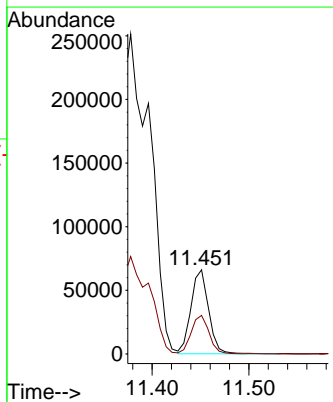
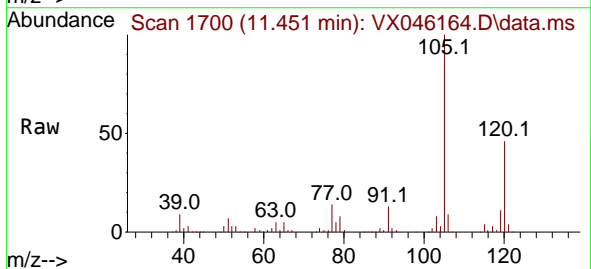
Instrument : MSVOA_X
 ClientSampleId : WC-A1-05-G

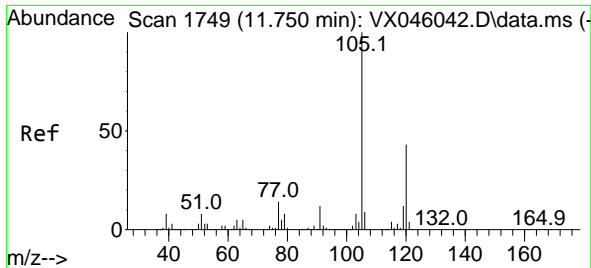
Tgt Ion: 91 Resp: 30257
 Ion Ratio Lower Upper
 91 100
 120 21.3 10.8 32.4



#80
 1,3,5-Trimethylbenzene
 Concen: 23.219 ug/l
 RT: 11.451 min Scan# 1700
 Delta R.T. -0.000 min
 Lab File: VX046164.D
 Acq: 13 May 2025 14:25

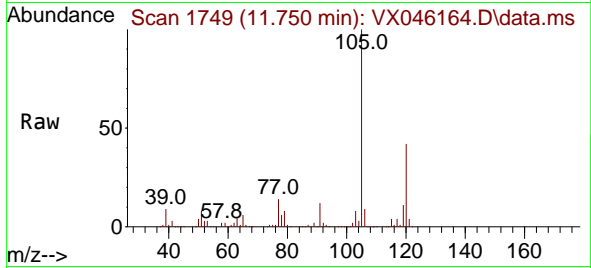
Tgt Ion: 105 Resp: 83484
 Ion Ratio Lower Upper
 105 100
 120 46.4 23.1 69.2



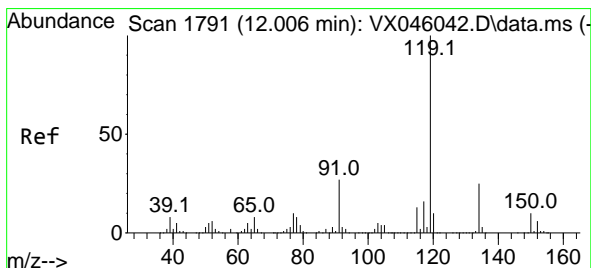
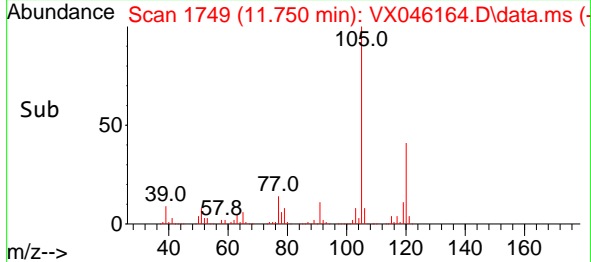
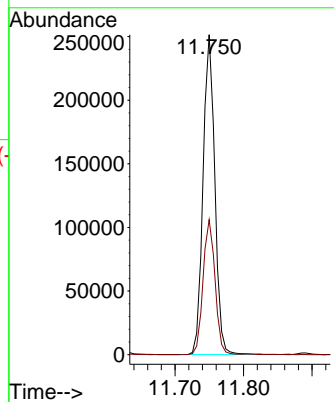


#84
 1,2,4-Trimethylbenzene
 Concen: 82.628 ug/l
 RT: 11.750 min Scan# 1749
 Delta R.T. -0.000 min
 Lab File: VX046164.D
 Acq: 13 May 2025 14:25

Instrument : MSVOA_X
 ClientSampleId : WC-A1-05-G

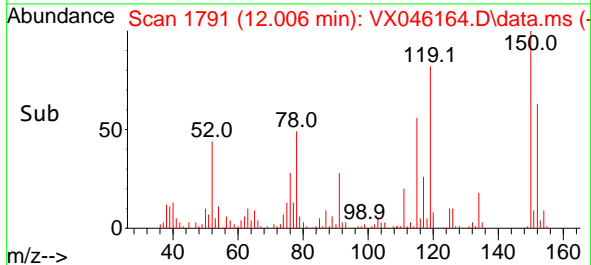
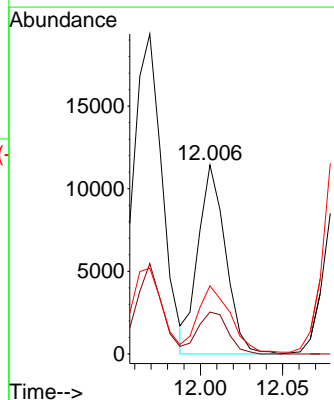
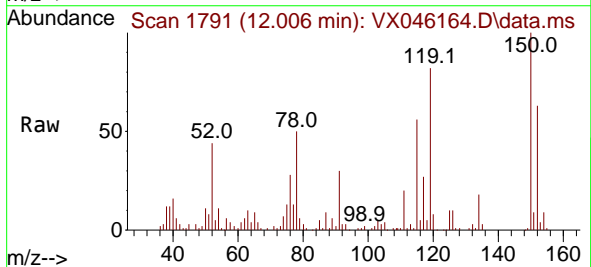


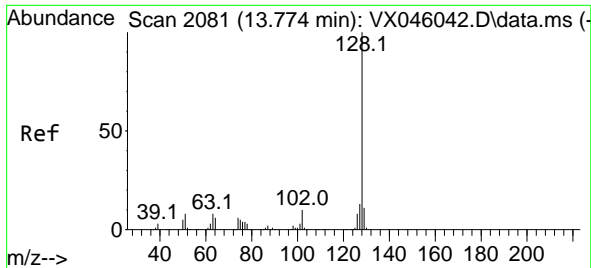
Tgt Ion:105 Resp: 300865
 Ion Ratio Lower Upper
 105 100
 120 43.0 21.2 63.6



#86
 p-Isopropyltoluene
 Concen: 3.618 ug/l
 RT: 12.006 min Scan# 1791
 Delta R.T. -0.000 min
 Lab File: VX046164.D
 Acq: 13 May 2025 14:25

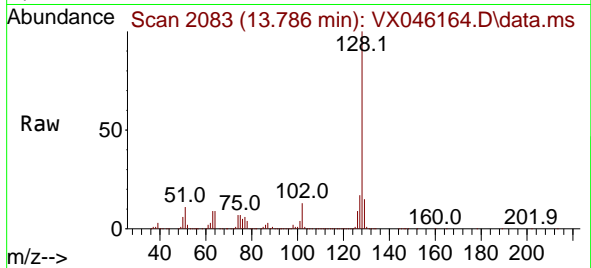
Tgt Ion:119 Resp: 13281
 Ion Ratio Lower Upper
 119 100
 134 24.5 12.5 37.5
 91 0.0 13.8 41.4#





#95
 Naphthalene
 Concen: 3525.134 ug/l
 RT: 13.786 min Scan# 2083
 Delta R.T. 0.012 min
 Lab File: VX046164.D
 Acq: 13 May 2025 14:25

Instrument : MSVOA_X
 ClientSampleId : WC-A1-05-G



Tgt Ion:128 Resp:13588910
 Ion Ratio Lower Upper
 128 100
 127 15.1 10.4 15.6
 129 13.5 8.6 13.0#

