

Data Path : Z:\voasrv\HPCHEM1\MSVOA_X\Data\VX051325\
 Data File : VX046166.D
 Acq On : 13 May 2025 15:11
 Operator : JC/MD
 Sample : Q2001-13
 Misc : 5.0mL/MSVOA_X/WATER
 ALS Vial : 15 Sample Multiplier: 1

Instrument :
 MSVOA_X
 ClientSampleId :
 WC-A1-07-G

Quant Time: May 14 01:41:26 2025
 Quant Method : Z:\voasrv\HPCHEM1\MSVOA_X\Method\82X050525W.M
 Quant Title : SW846 8260
 QLast Update : Tue May 06 07:12:22 2025
 Response via : Initial Calibration

Compound	R.T.	QIon	Response	Conc	Units	Dev(Min)

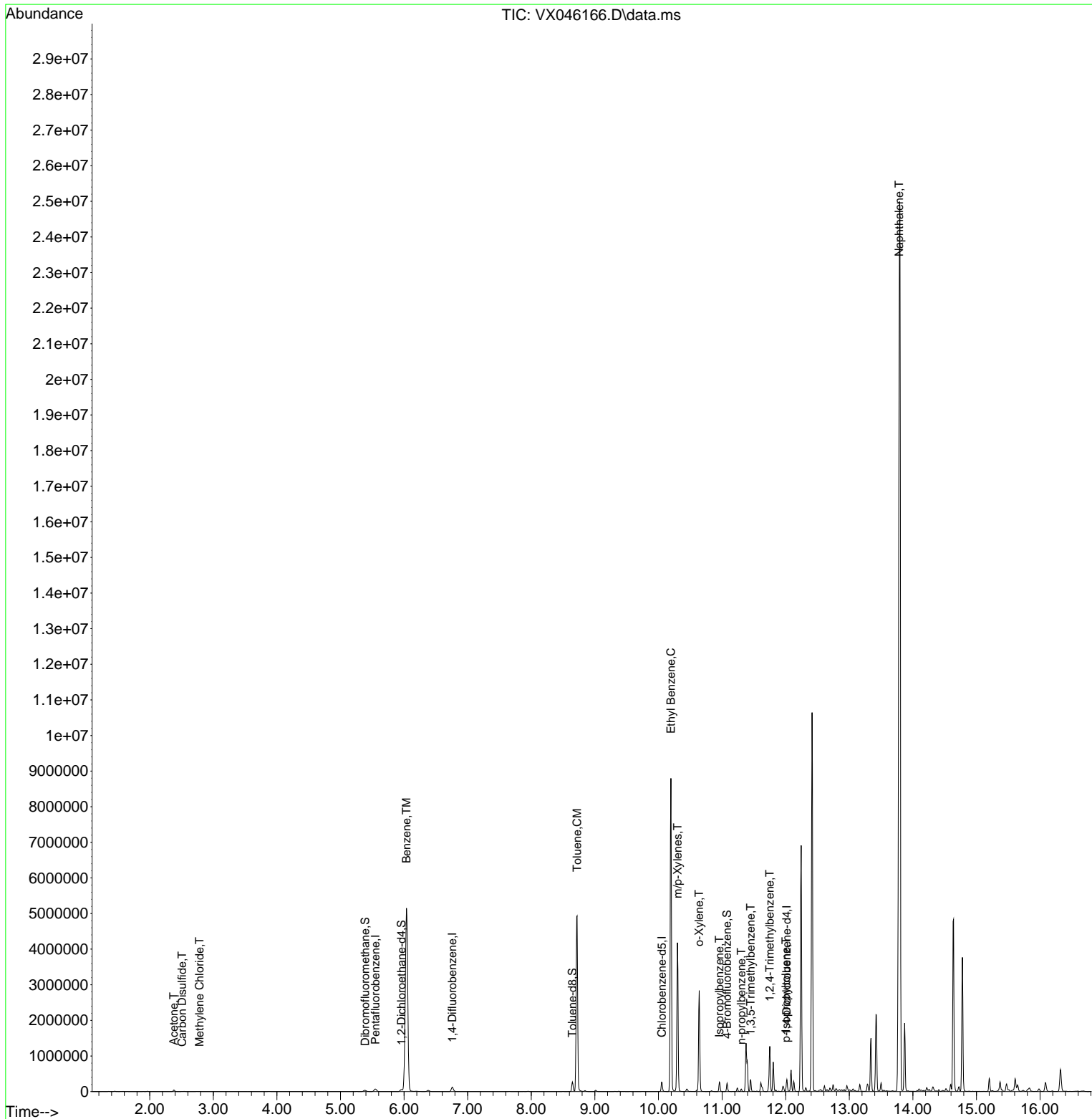
Internal Standards						
1) Pentafluorobenzene	5.550	168	63010	50.000	ug/l	0.00
34) 1,4-Difluorobenzene	6.757	114	118470	50.000	ug/l	0.00
63) Chlorobenzene-d5	10.055	117	115809	50.000	ug/l	0.00
72) 1,4-Dichlorobenzene-d4	12.018	152	55553	50.000	ug/l	0.00
System Monitoring Compounds						
33) 1,2-Dichloroethane-d4	5.958	65	59884	50.978	ug/l	0.00
Spiked Amount	50.000	Range 74 - 125	Recovery	=	101.960%	
35) Dibromofluoromethane	5.385	113	31017	36.358	ug/l	0.00
Spiked Amount	50.000	Range 75 - 124	Recovery	=	72.720%#	
50) Toluene-d8	8.647	98	150823	51.079	ug/l	0.00
Spiked Amount	50.000	Range 86 - 113	Recovery	=	102.160%	
62) 4-Bromofluorobenzene	11.079	95	60469	53.388	ug/l	0.00
Spiked Amount	50.000	Range 77 - 121	Recovery	=	106.780%	
Target Compounds						
						Qvalue
16) Acetone	2.380	43	48295	102.536	ug/l	97
17) Carbon Disulfide	2.508	76	4910	2.772	ug/l	96
20) Methylene Chloride	2.782	84	1858	2.059	ug/l	90
40) Benzene	6.038	78	5970730	1778.360	ug/l	99
52) Toluene	8.720	92	1872054	909.328	ug/l	98
67) Ethyl Benzene	10.195	91	4894168	1095.351	ug/l	96
68) m/p-Xylenes	10.299	106	877516	536.975	ug/l	100
69) o-Xylene	10.640	106	545385	342.327	ug/l	99
73) Isopropylbenzene	10.957	105	136999	31.676	ug/l	99
78) n-propylbenzene	11.305	91	42409	8.433	ug/l	99
80) 1,3,5-Trimethylbenzene	11.451	105	143432	39.697	ug/l	99
84) 1,2,4-Trimethylbenzene	11.750	105	515381	140.852	ug/l	99
86) p-Isopropyltoluene	12.006	119	16471	4.465	ug/l #	71
95) Naphthalene	13.786	128	18150456	4685.487	ug/l #	89

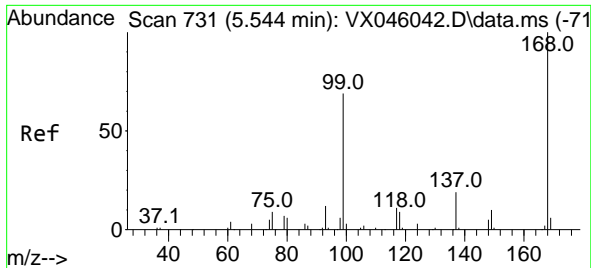
(#) = qualifier out of range (m) = manual integration (+) = signals summed

Data Path : Z:\voasrv\HPCHEM1\MSVOA_X\Data\VX051325\
 Data File : VX046166.D
 Acq On : 13 May 2025 15:11
 Operator : JC/MD
 Sample : Q2001-13
 Misc : 5.0mL/MSVOA_X/WATER
 ALS Vial : 15 Sample Multiplier: 1

Instrument :
 MSVOA_X
 ClientSampleId :
 WC-A1-07-G

Quant Time: May 14 01:41:26 2025
 Quant Method : Z:\voasrv\HPCHEM1\MSVOA_X\Method\82X050525W.M
 Quant Title : SW846 8260
 QLast Update : Tue May 06 07:12:22 2025
 Response via : Initial Calibration

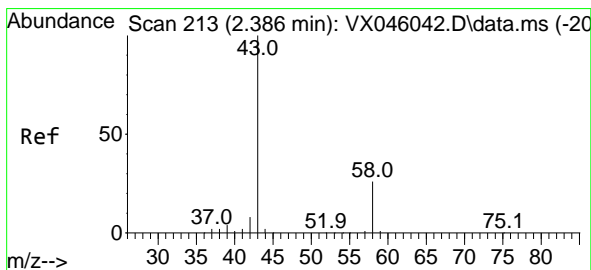
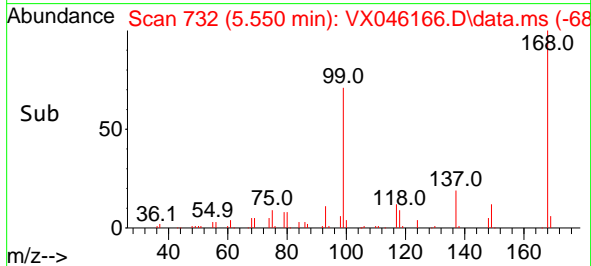
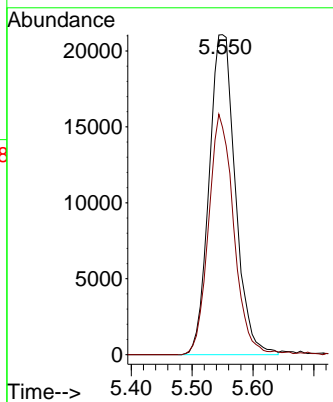
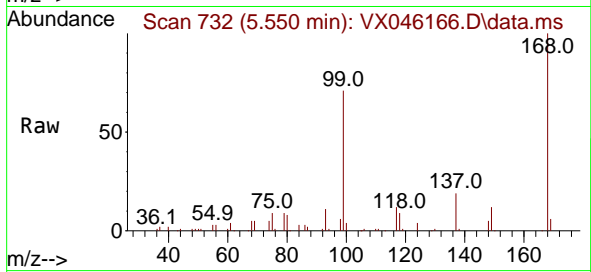




#1
 Pentafluorobenzene
 Concen: 50.000 ug/l
 RT: 5.550 min Scan# 71
 Delta R.T. 0.006 min
 Lab File: VX046166.D
 Acq: 13 May 2025 15:11

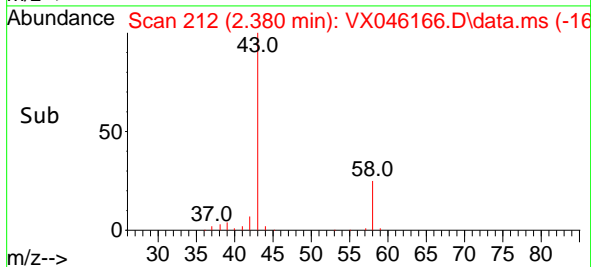
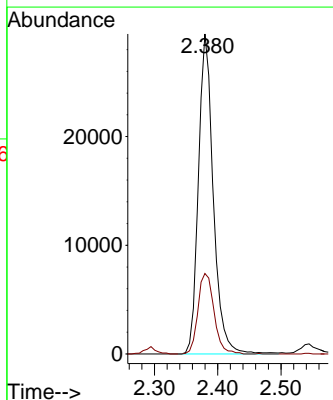
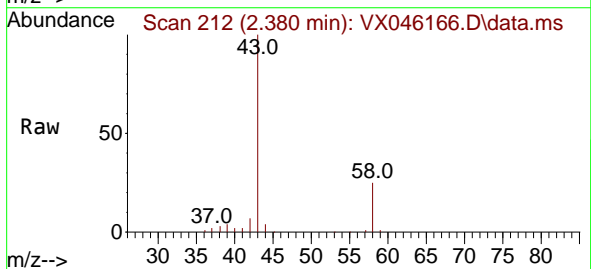
Instrument :
 MSVOA_X
 ClientSampleId :
 WC-A1-07-G

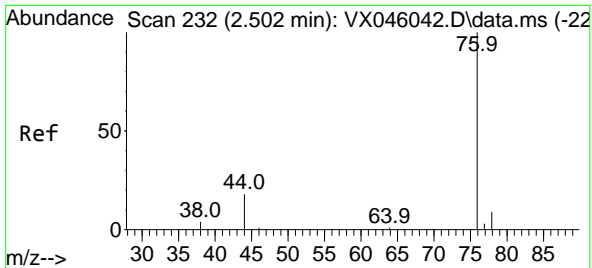
Tgt Ion:168 Resp: 63010
 Ion Ratio Lower Upper
 168 100
 99 71.1 54.9 82.3



#16
 Acetone
 Concen: 102.536 ug/l
 RT: 2.380 min Scan# 212
 Delta R.T. -0.006 min
 Lab File: VX046166.D
 Acq: 13 May 2025 15:11

Tgt Ion: 43 Resp: 48295
 Ion Ratio Lower Upper
 43 100
 58 25.2 21.2 31.8

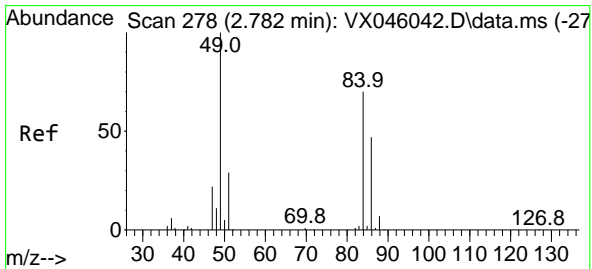
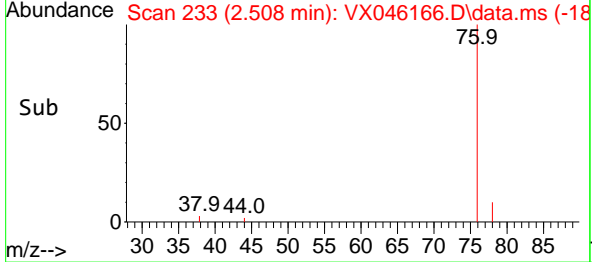
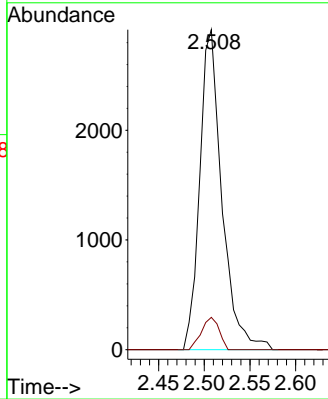
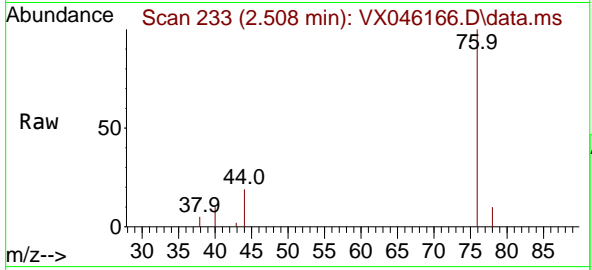




#17
 Carbon Disulfide
 Concen: 2.772 ug/l
 RT: 2.508 min Scan# 21
 Delta R.T. 0.006 min
 Lab File: VX046166.D
 Acq: 13 May 2025 15:11

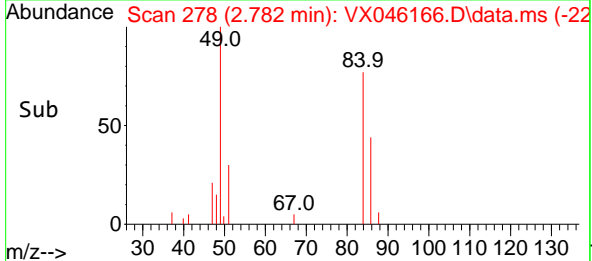
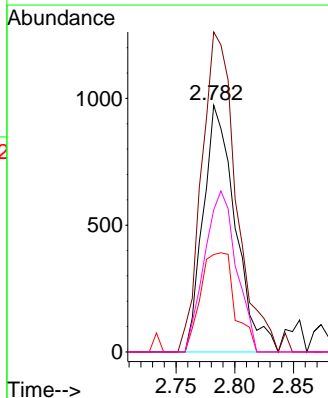
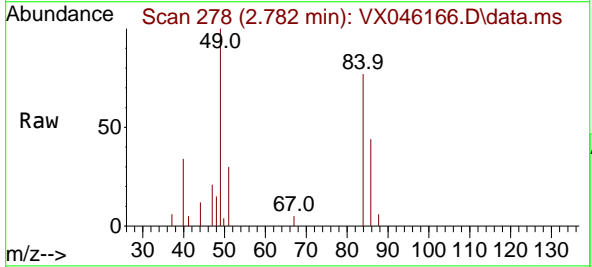
Instrument :
 MSVOA_X
 ClientSampleId :
 WC-A1-07-G

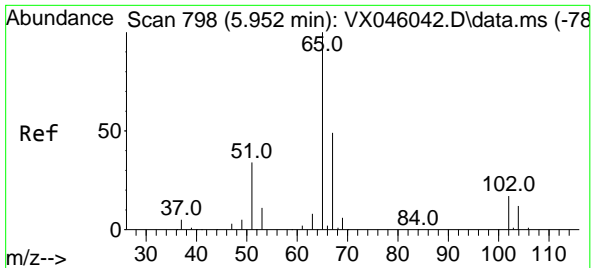
Tgt Ion: 76 Resp: 4910
 Ion Ratio Lower Upper
 76 100
 78 10.1 7.0 10.4



#20
 Methylene Chloride
 Concen: 2.059 ug/l
 RT: 2.782 min Scan# 278
 Delta R.T. 0.000 min
 Lab File: VX046166.D
 Acq: 13 May 2025 15:11

Tgt Ion: 84 Resp: 1858
 Ion Ratio Lower Upper
 84 100
 49 129.7 113.9 170.9
 51 39.5 33.5 50.3
 86 57.6 53.8 80.8

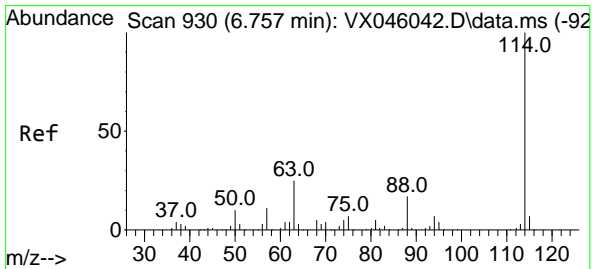
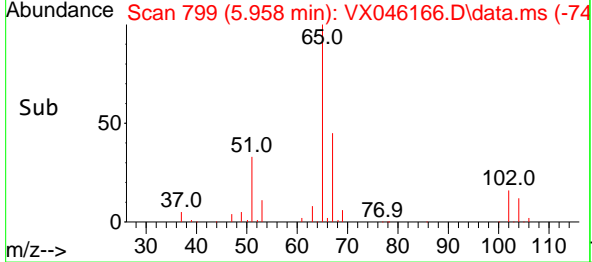
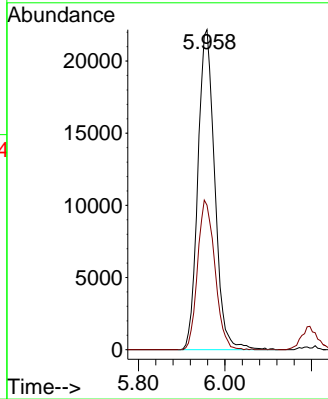
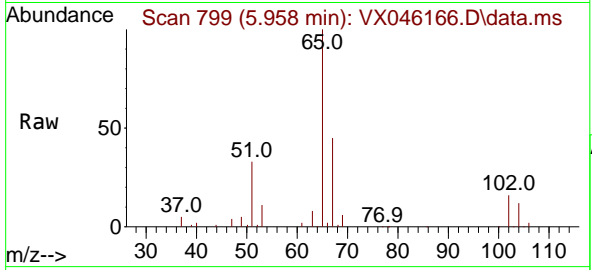




#33
 1,2-Dichloroethane-d4
 Concen: 50.978 ug/l
 RT: 5.958 min Scan# 799
 Delta R.T. 0.006 min
 Lab File: VX046166.D
 Acq: 13 May 2025 15:11

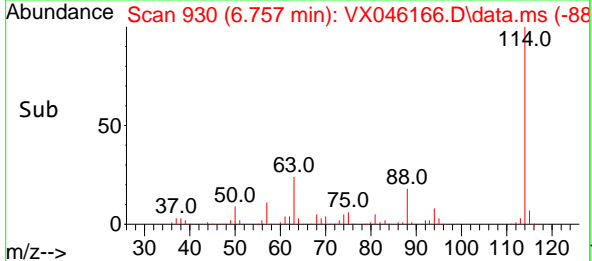
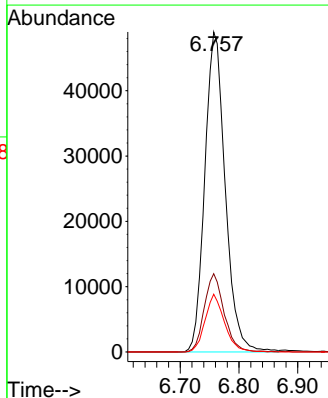
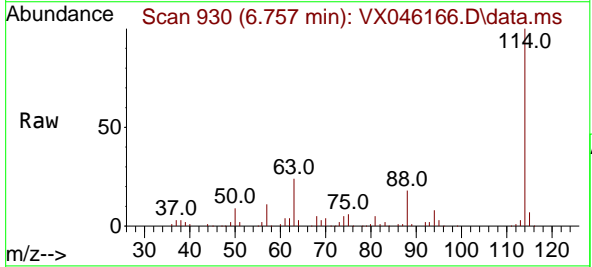
Instrument : MSVOA_X
 ClientSampleId : WC-A1-07-G

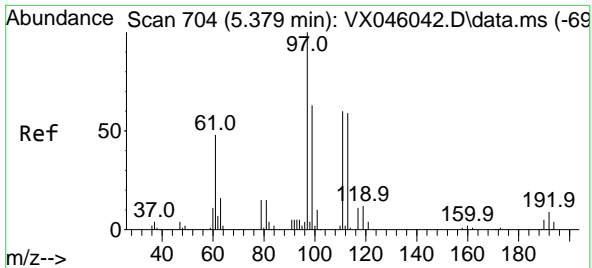
Tgt Ion: 65 Resp: 59884
 Ion Ratio Lower Upper
 65 100
 67 47.9 0.0 99.0



#34
 1,4-Difluorobenzene
 Concen: 50.000 ug/l
 RT: 6.757 min Scan# 930
 Delta R.T. 0.000 min
 Lab File: VX046166.D
 Acq: 13 May 2025 15:11

Tgt Ion: 114 Resp: 118470
 Ion Ratio Lower Upper
 114 100
 63 24.4 0.0 49.2
 88 18.1 0.0 33.6



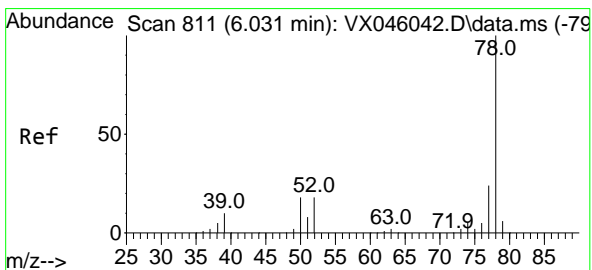
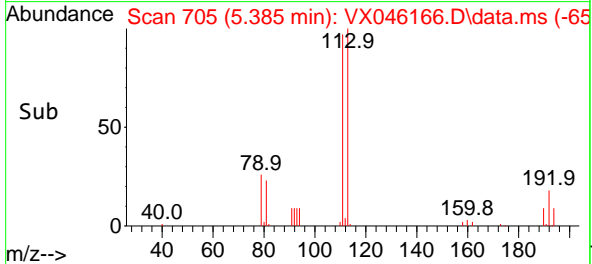
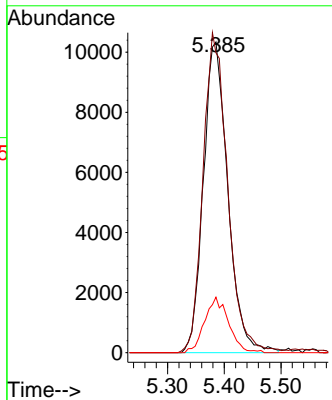
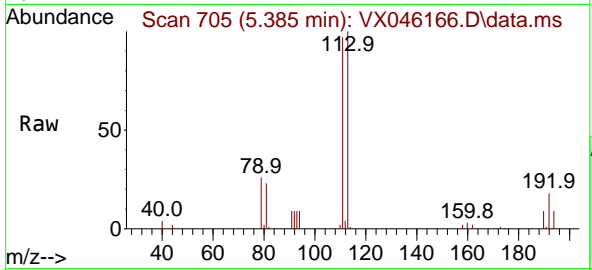


#35
 Dibromofluoromethane
 Concen: 36.358 ug/l
 RT: 5.385 min Scan# 705
 Delta R.T. 0.006 min
 Lab File: VX046166.D
 Acq: 13 May 2025 15:11

Instrument :
 MSVOA_X
 ClientSampleId :
 WC-A1-07-G

Tgt Ion:113 Resp: 31017

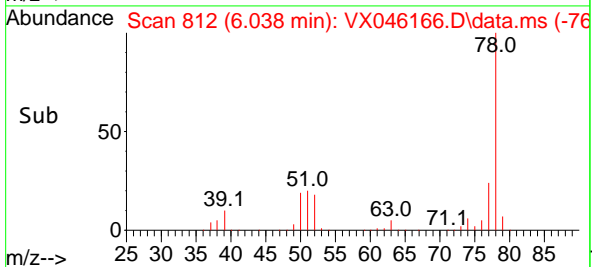
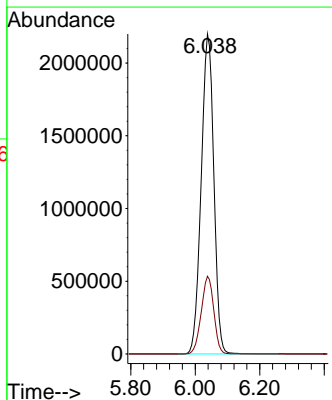
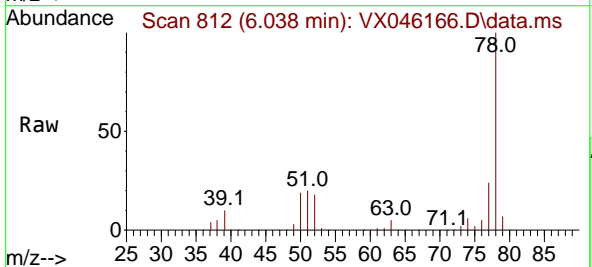
Ion	Ratio	Lower	Upper
113	100		
111	103.3	83.1	124.7
192	17.5	13.3	19.9

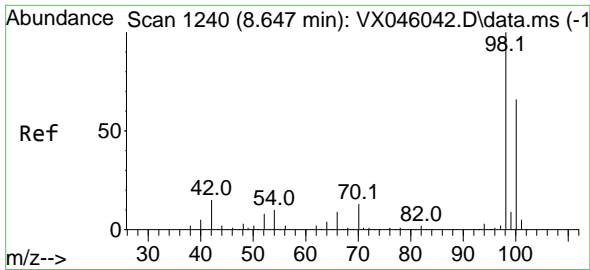


#40
 Benzene
 Concen: 1778.360 ug/l
 RT: 6.038 min Scan# 812
 Delta R.T. 0.006 min
 Lab File: VX046166.D
 Acq: 13 May 2025 15:11

Tgt Ion: 78 Resp: 5970730

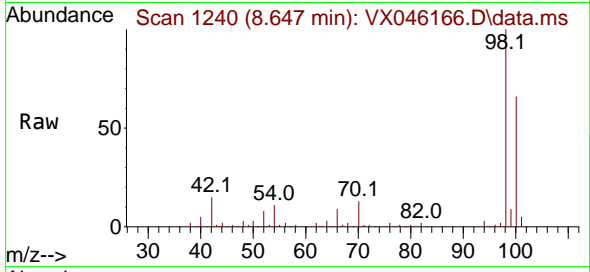
Ion	Ratio	Lower	Upper
78	100		
77	24.3	19.0	28.4



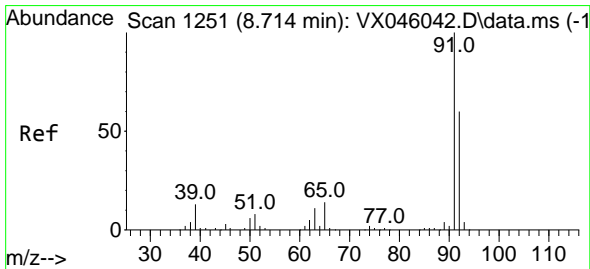
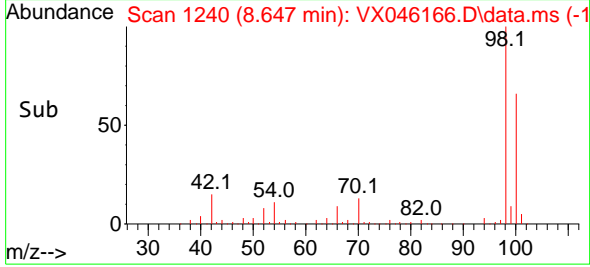
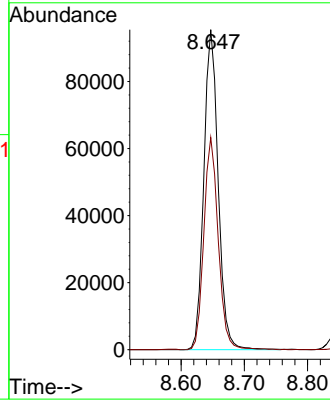


#50
 Toluene-d8
 Concen: 51.079 ug/l
 RT: 8.647 min Scan# 11
 Delta R.T. 0.000 min
 Lab File: VX046166.D
 Acq: 13 May 2025 15:11

Instrument :
 MSVOA_X
 ClientSampleId :
 WC-A1-07-G

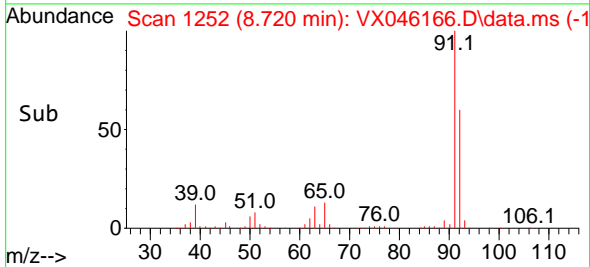
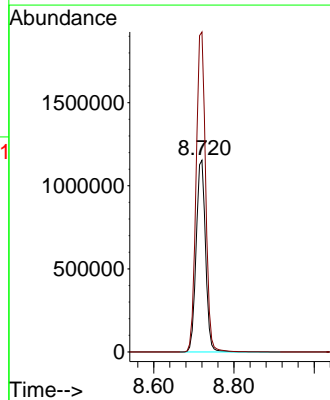
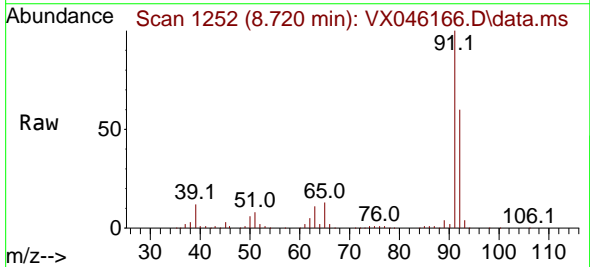


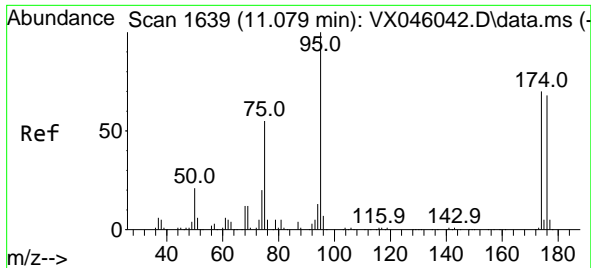
Tgt Ion: 98 Resp: 150823
 Ion Ratio Lower Upper
 98 100
 100 66.4 53.5 80.3



#52
 Toluene
 Concen: 909.328 ug/l
 RT: 8.720 min Scan# 1252
 Delta R.T. 0.006 min
 Lab File: VX046166.D
 Acq: 13 May 2025 15:11

Tgt Ion: 92 Resp: 1872054
 Ion Ratio Lower Upper
 92 100
 91 168.7 136.6 205.0



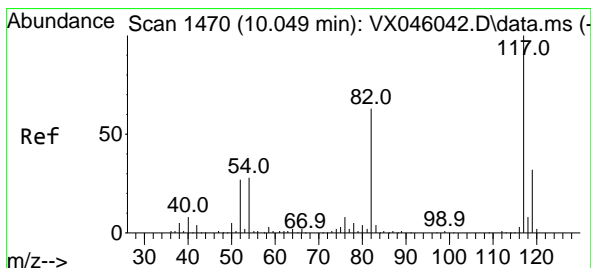
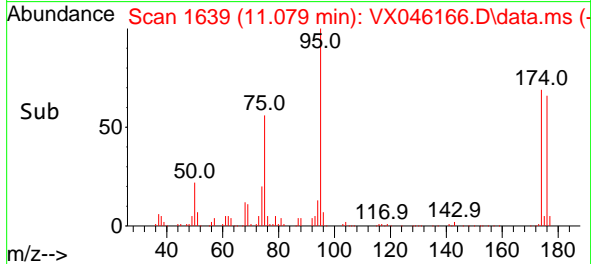
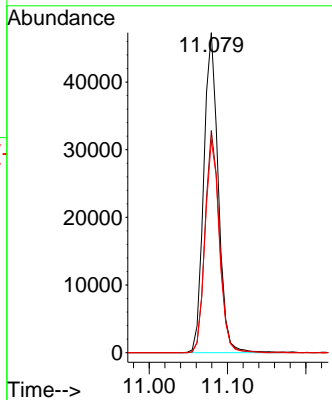
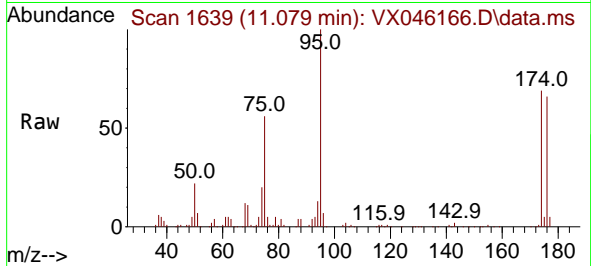


#62
 4-Bromofluorobenzene
 Concen: 53.388 ug/l
 RT: 11.079 min Scan# 1639
 Delta R.T. 0.000 min
 Lab File: VX046166.D
 Acq: 13 May 2025 15:11

Instrument :
 MSVOA_X
 ClientSampleId :
 WC-A1-07-G

Tgt Ion: 95 Resp: 60469

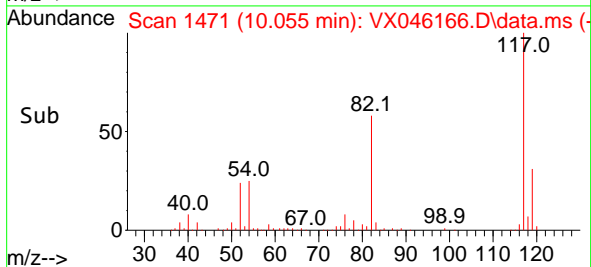
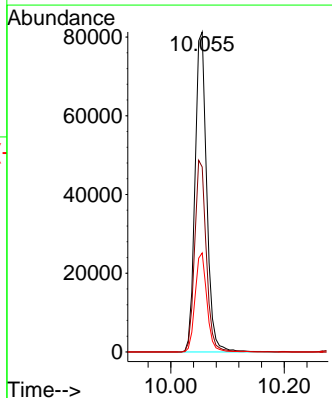
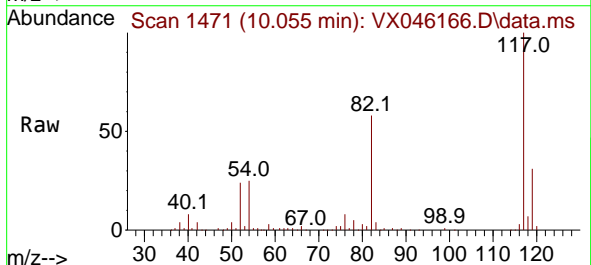
Ion	Ratio	Lower	Upper
95	100		
174	68.5	0.0	135.8
176	65.9	0.0	131.4

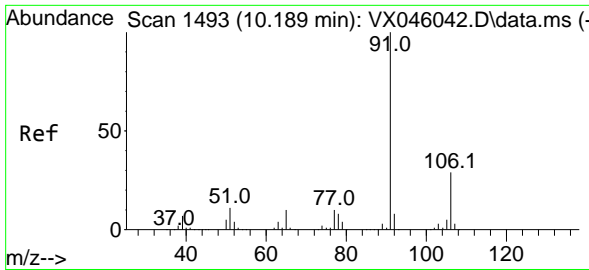


#63
 Chlorobenzene-d5
 Concen: 50.000 ug/l
 RT: 10.055 min Scan# 1471
 Delta R.T. 0.006 min
 Lab File: VX046166.D
 Acq: 13 May 2025 15:11

Tgt Ion: 117 Resp: 115809

Ion	Ratio	Lower	Upper
117	100		
82	57.8	50.6	76.0
119	31.0	25.8	38.6

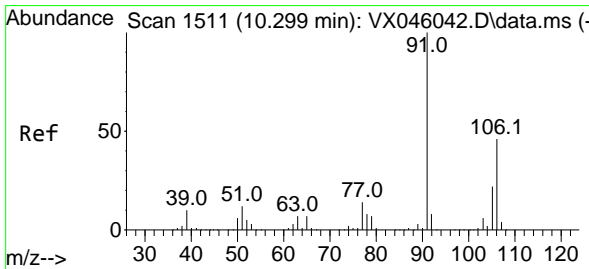
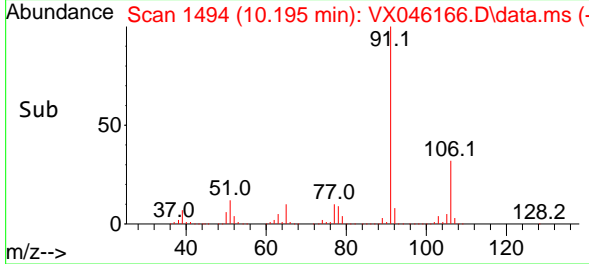
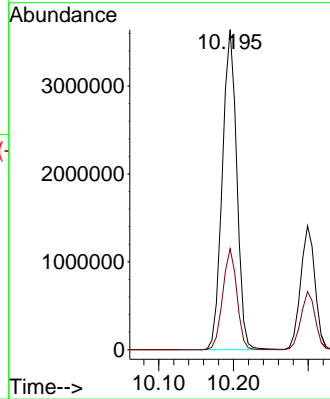
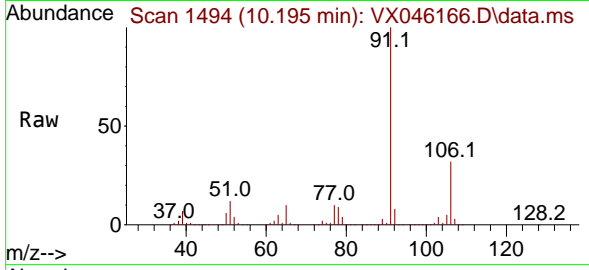




#67
 Ethyl Benzene
 Concen: 1095.351 ug/l
 RT: 10.195 min Scan# 1494
 Delta R.T. 0.006 min
 Lab File: VX046166.D
 Acq: 13 May 2025 15:11

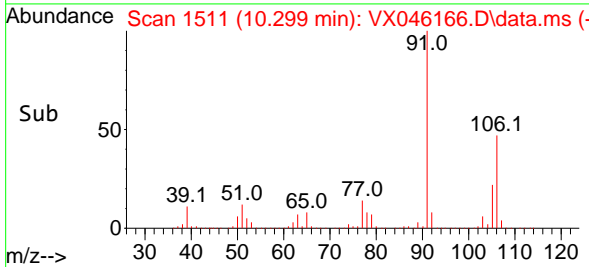
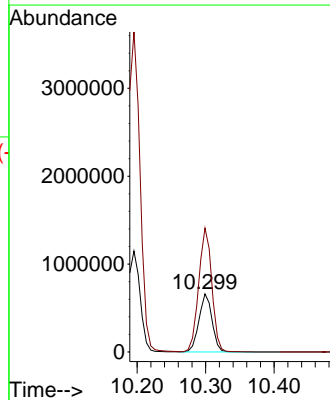
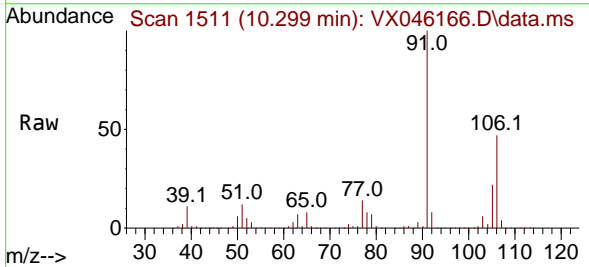
Instrument :
 MSVOA_X
 ClientSampleId :
 WC-A1-07-G

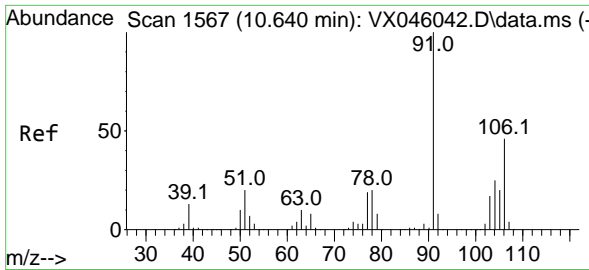
Tgt Ion: 91 Resp: 4894168
 Ion Ratio Lower Upper
 91 100
 106 31.6 23.4 35.2



#68
 m/p-Xylenes
 Concen: 536.975 ug/l
 RT: 10.299 min Scan# 1511
 Delta R.T. -0.000 min
 Lab File: VX046166.D
 Acq: 13 May 2025 15:11

Tgt Ion: 106 Resp: 877516
 Ion Ratio Lower Upper
 106 100
 91 214.3 171.2 256.8

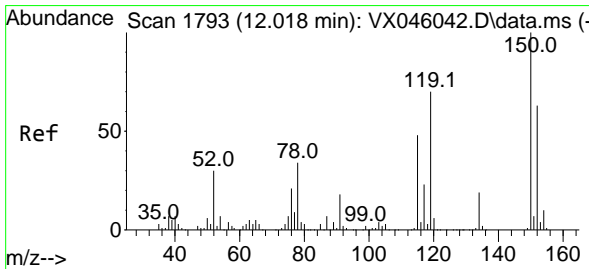
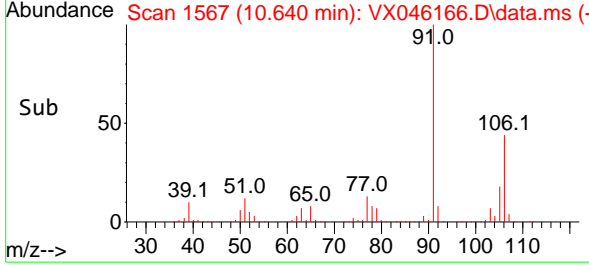
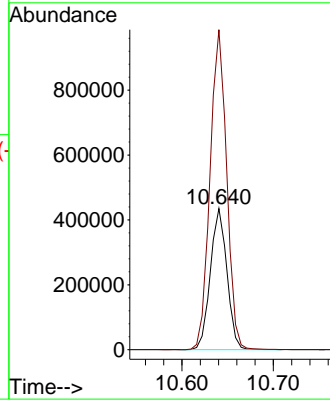
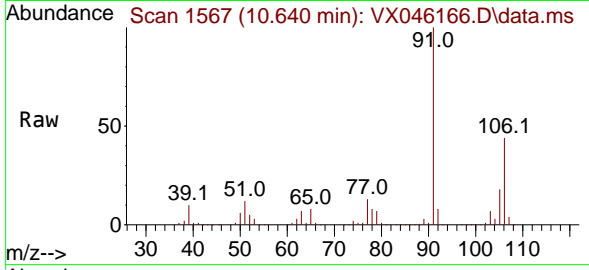




#69
 o-Xylene
 Concen: 342.327 ug/l
 RT: 10.640 min Scan# 11
 Delta R.T. 0.000 min
 Lab File: VX046166.D
 Acq: 13 May 2025 15:11

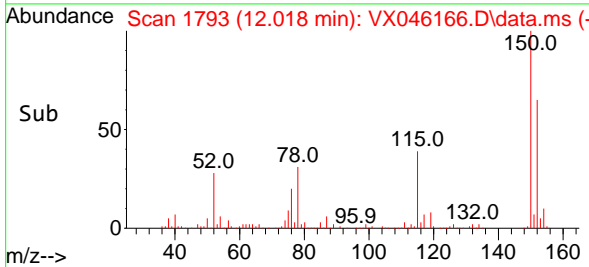
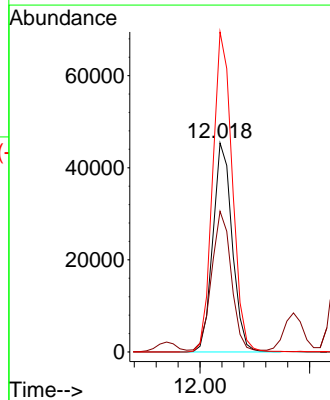
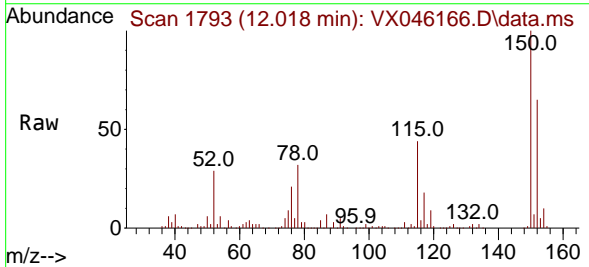
Instrument :
 MSVOA_X
 ClientSampleId :
 WC-A1-07-G

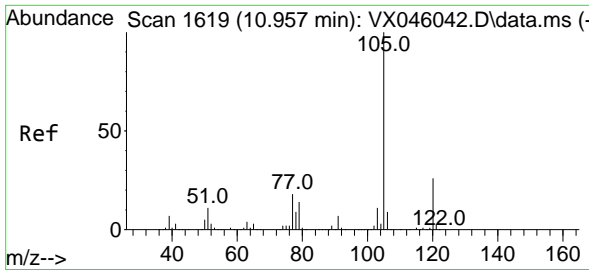
Tgt Ion:106 Resp: 545385
 Ion Ratio Lower Upper
 106 100
 91 227.8 112.7 338.1



#72
 1,4-Dichlorobenzene-d4
 Concen: 50.000 ug/l
 RT: 12.018 min Scan# 1793
 Delta R.T. 0.000 min
 Lab File: VX046166.D
 Acq: 13 May 2025 15:11

Tgt Ion:152 Resp: 55553
 Ion Ratio Lower Upper
 152 100
 115 66.7 46.9 140.7
 150 155.0 0.0 351.0

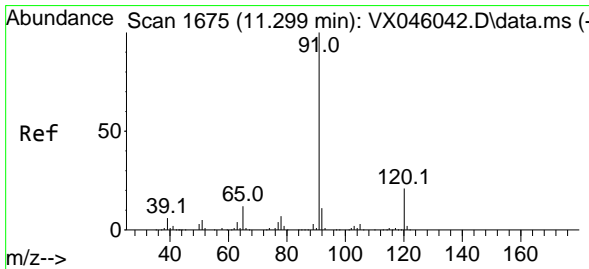
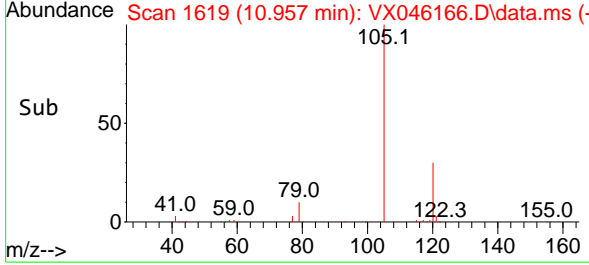
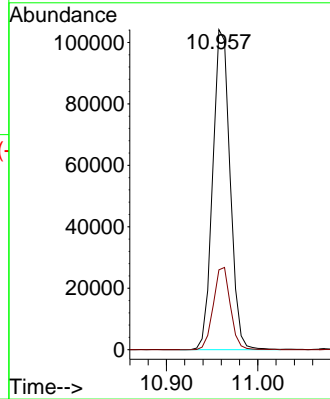
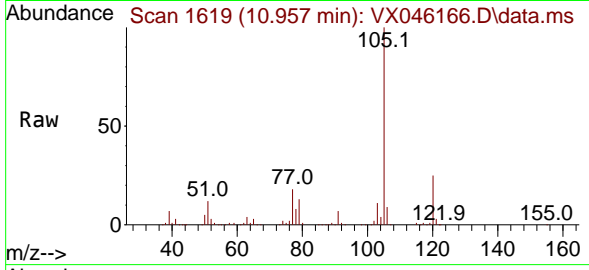




#73
 Isopropylbenzene
 Concen: 31.676 ug/l
 RT: 10.957 min Scan# 1619
 Delta R.T. 0.000 min
 Lab File: VX046166.D
 Acq: 13 May 2025 15:11

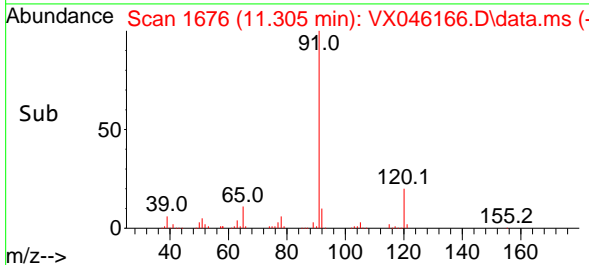
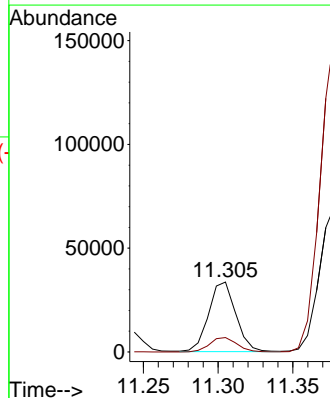
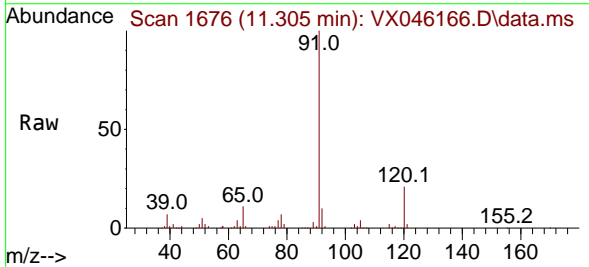
Instrument :
 MSVOA_X
 ClientSampleId :
 WC-A1-07-G

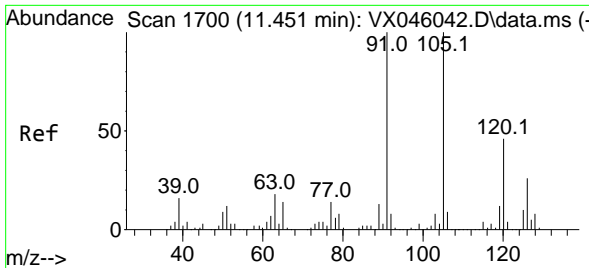
Tgt Ion:105 Resp: 136999
 Ion Ratio Lower Upper
 105 100
 120 25.3 12.8 38.4



#78
 n-propylbenzene
 Concen: 8.433 ug/l
 RT: 11.305 min Scan# 1676
 Delta R.T. 0.006 min
 Lab File: VX046166.D
 Acq: 13 May 2025 15:11

Tgt Ion: 91 Resp: 42409
 Ion Ratio Lower Upper
 91 100
 120 21.0 10.8 32.4

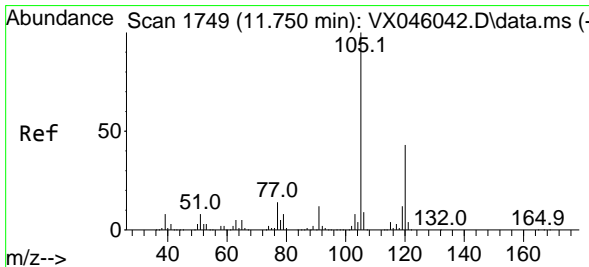
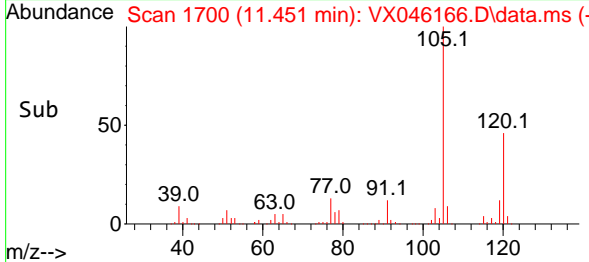
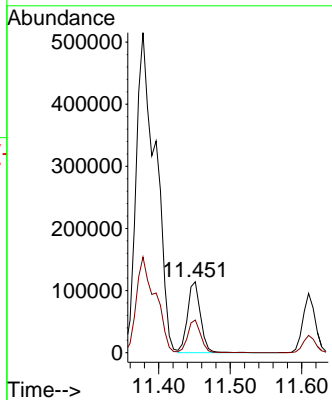
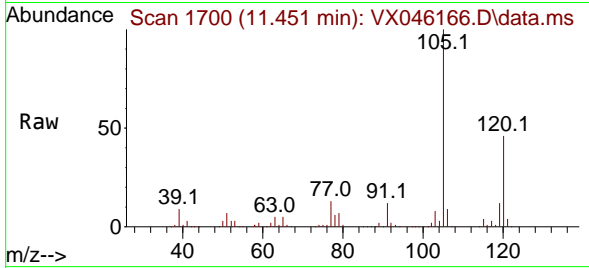




#80
 1,3,5-Trimethylbenzene
 Concen: 39.697 ug/l
 RT: 11.451 min Scan# 1700
 Delta R.T. 0.000 min
 Lab File: VX046166.D
 Acq: 13 May 2025 15:11

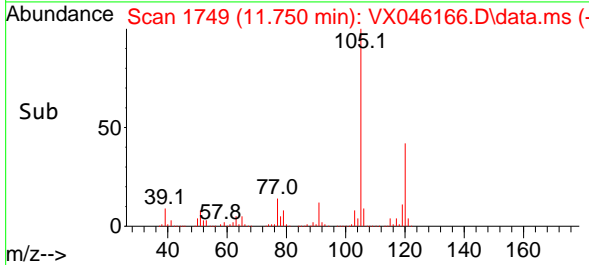
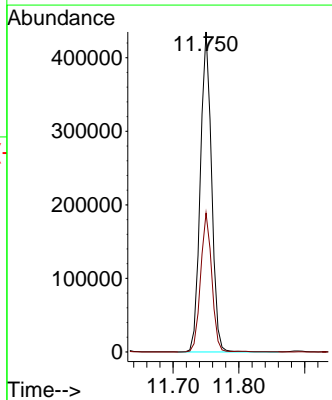
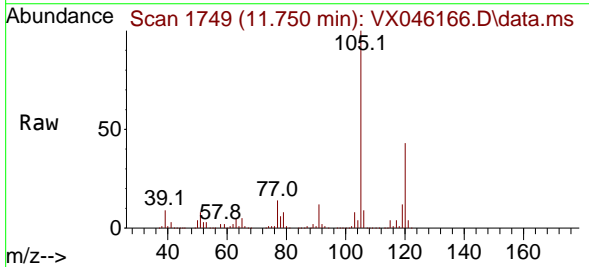
Instrument :
 MSVOA_X
 ClientSampleId :
 WC-A1-07-G

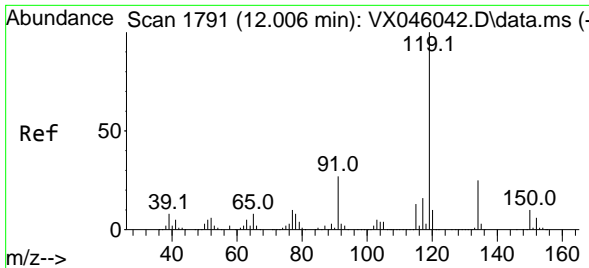
Tgt Ion:105 Resp: 143432
 Ion Ratio Lower Upper
 105 100
 120 45.5 23.1 69.2



#84
 1,2,4-Trimethylbenzene
 Concen: 140.852 ug/l
 RT: 11.750 min Scan# 1749
 Delta R.T. 0.000 min
 Lab File: VX046166.D
 Acq: 13 May 2025 15:11

Tgt Ion:105 Resp: 515381
 Ion Ratio Lower Upper
 105 100
 120 43.0 21.2 63.6



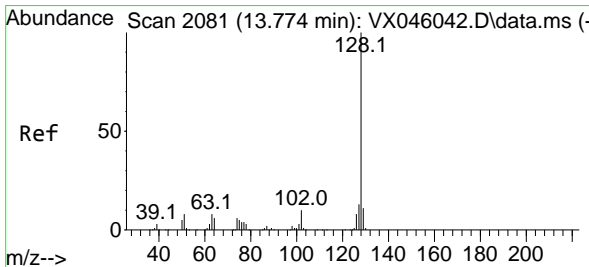
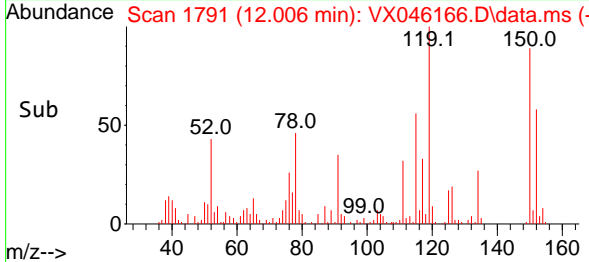
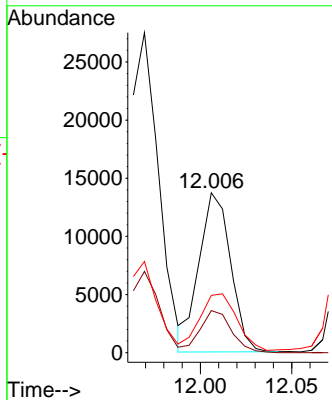
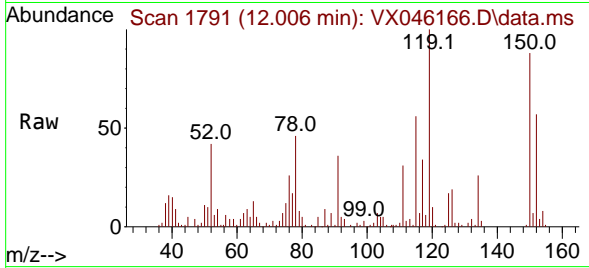


#86
 p-Isopropyltoluene
 Concen: 4.465 ug/l
 RT: 12.006 min Scan# 1791
 Delta R.T. 0.000 min
 Lab File: VX046166.D
 Acq: 13 May 2025 15:11

Instrument : MSVOA_X
 ClientSampleId : WC-A1-07-G

Tgt Ion:119 Resp: 16471

Ion	Ratio	Lower	Upper
119	100		
134	26.4	12.5	37.5
91	0.0	13.8	41.4#



#95
 Naphthalene
 Concen: 4685.487 ug/l
 RT: 13.786 min Scan# 2083
 Delta R.T. 0.012 min
 Lab File: VX046166.D
 Acq: 13 May 2025 15:11

Tgt Ion:128 Resp:18150456

Ion	Ratio	Lower	Upper
128	100		
127	16.8	10.4	15.6#
129	15.2	8.6	13.0#

