

Data Path : Z:\pestpcbsrv\HPCHEM1\FID_G\Data\FG051625AL\
 Data File : FG015846.D
 Signal(s) : FID1A.ch
 Acq On : 16 May 2025 12:58
 Operator : YP\AJ
 Sample : Q2003-03
 Misc :
 ALS Vial : 24 Sample Multiplier: 1

Instrument :
 FID_G
 ClientSampleId :
 1

Integration File: autoint1.e
 Quant Time: May 17 00:41:59 2025
 Quant Method : Z:\pestpcbsrv\HPCHEM1\FID_G\Method\Aliphatic EPH 051225.M
 Quant Title : GC Extractables
 QLast Update : Mon May 12 12:44:43 2025
 Response via : Initial Calibration
 Integrator: ChemStation

Volume Inj. : 1 ul
 Signal Phase : Rxi-1ms
 Signal Info : 20M x 0.18mm x 0.18um

Compound	R.T.	Response	Conc Units
System Monitoring Compounds			
9) S ortho-Terphenyl (SURR)	11.889	4539725	30.491 ug/ml
Spiked Amount	50.000	Recovery	= 60.98%
12) S 1-chlorooctadecane (S...	13.333	3564425	30.941 ug/ml
Spiked Amount	50.000	Recovery	= 61.88%

Target Compounds

(f)=RT Delta > 1/2 Window

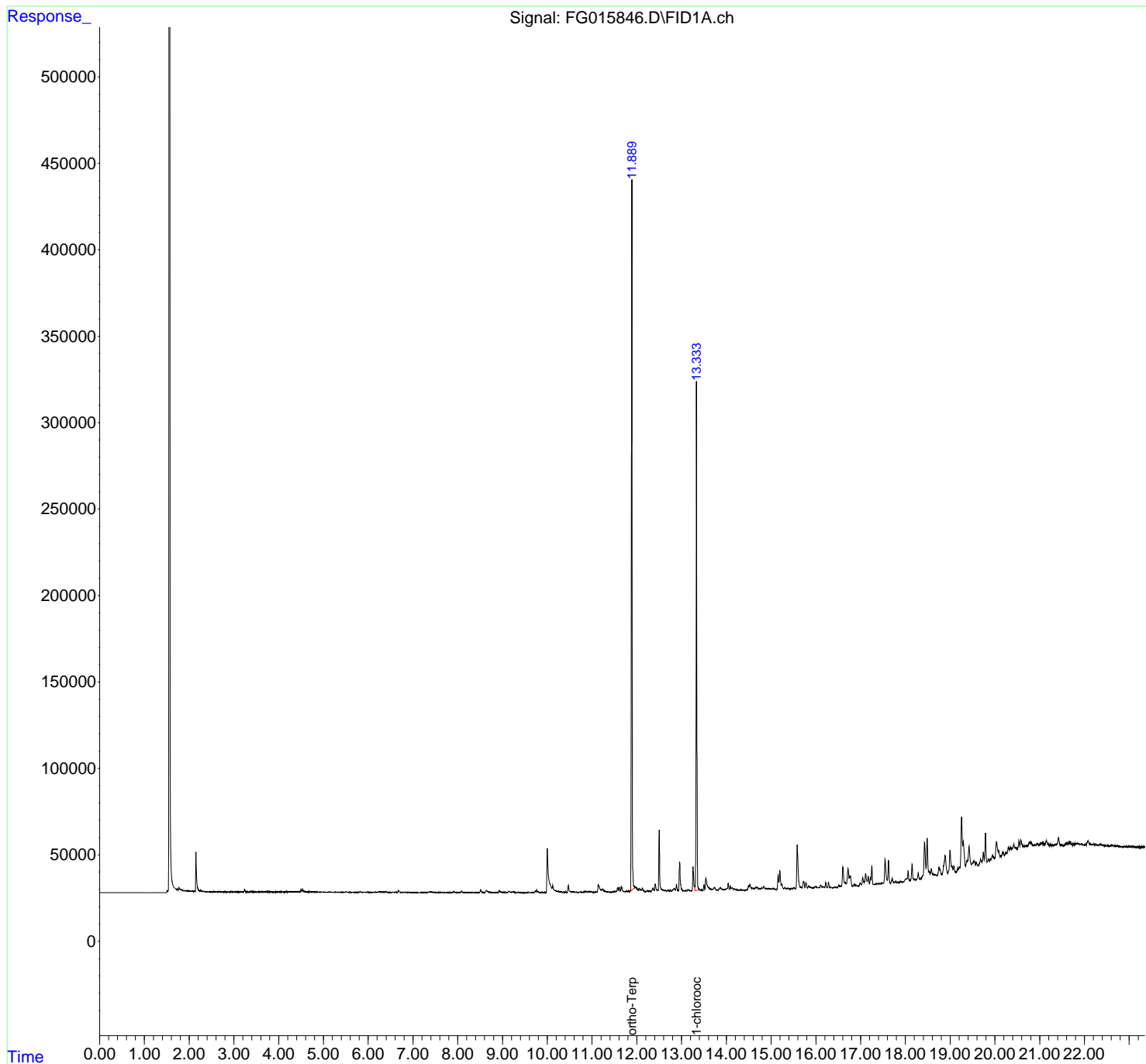
(m)=manual int.

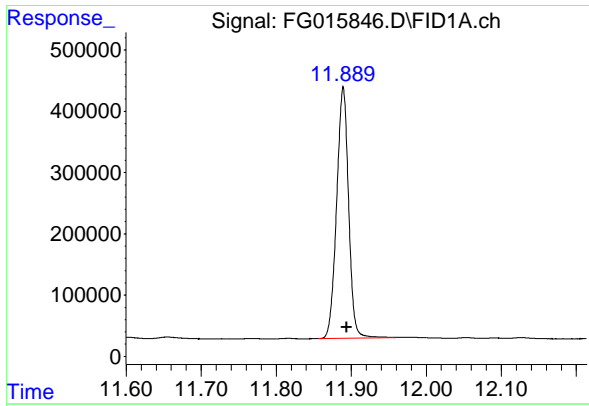
Data Path : Z:\pestpcbsrv\HPCHEM1\FID_G\Data\FG051625AL\
 Data File : FG015846.D
 Signal(s) : FID1A.ch
 Acq On : 16 May 2025 12:58
 Operator : YP\AJ
 Sample : Q2003-03
 Misc :
 ALS Vial : 24 Sample Multiplier: 1

Instrument :
 FID_G
 ClientSampleId :
 1

Integration File: autoint1.e
 Quant Time: May 17 00:41:59 2025
 Quant Method : Z:\pestpcbsrv\HPCHEM1\FID_G\Method\Aliphatic EPH 051225.M
 Quant Title : GC Extractables
 QLast Update : Mon May 12 12:44:43 2025
 Response via : Initial Calibration
 Integrator: ChemStation

Volume Inj. : 1 ul
 Signal Phase : Rxi-1ms
 Signal Info : 20M x 0.18mm x 0.18um

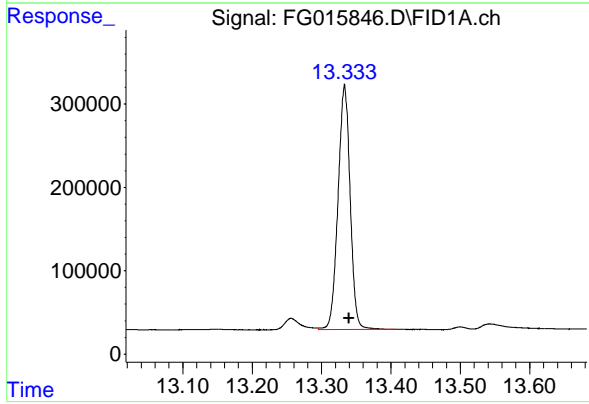




#9 ortho-Terphenyl (SURR)

R.T.: 11.889 min
Delta R.T.: -0.005 min
Response: 4539725
Conc: 30.49 ug/ml

Instrument :
FID_G
ClientSampleId :
1



#12 1-chlorooctadecane (SURR)

R.T.: 13.333 min
Delta R.T.: -0.006 min
Response: 3564425
Conc: 30.94 ug/ml