

Data Path : Z:\pestpcbsrv\HPCHEM1\FID\_G\Data\FG051625AL\  
 Data File : FG015849.D  
 Signal(s) : FID1A.ch  
 Acq On : 16 May 2025 14:27  
 Operator : YP\AJ  
 Sample : Q2003-06  
 Misc :  
 ALS Vial : 27 Sample Multiplier: 1

Instrument :  
 FID\_G  
 ClientSampleId :  
 4

Integration File: autoint1.e  
 Quant Time: May 17 00:42:40 2025  
 Quant Method : Z:\pestpcbsrv\HPCHEM1\FID\_G\Method\Aliphatic EPH 051225.M  
 Quant Title : GC Extractables  
 QLast Update : Mon May 12 12:44:43 2025  
 Response via : Initial Calibration  
 Integrator: ChemStation

Volume Inj. : 1 ul  
 Signal Phase : Rxi-1ms  
 Signal Info : 20M x 0.18mm x 0.18um

Compound	R.T.	Response	Conc Units
-----			
System Monitoring Compounds			
9) S ortho-Terphenyl (SURR)	11.890	5408040	36.323 ug/ml
Spiked Amount	50.000	Recovery =	72.65%
12) S 1-chlorooctadecane (S...	13.334	4278689	37.141 ug/ml
Spiked Amount	50.000	Recovery =	74.28%

Target Compounds

(f)=RT Delta > 1/2 Window

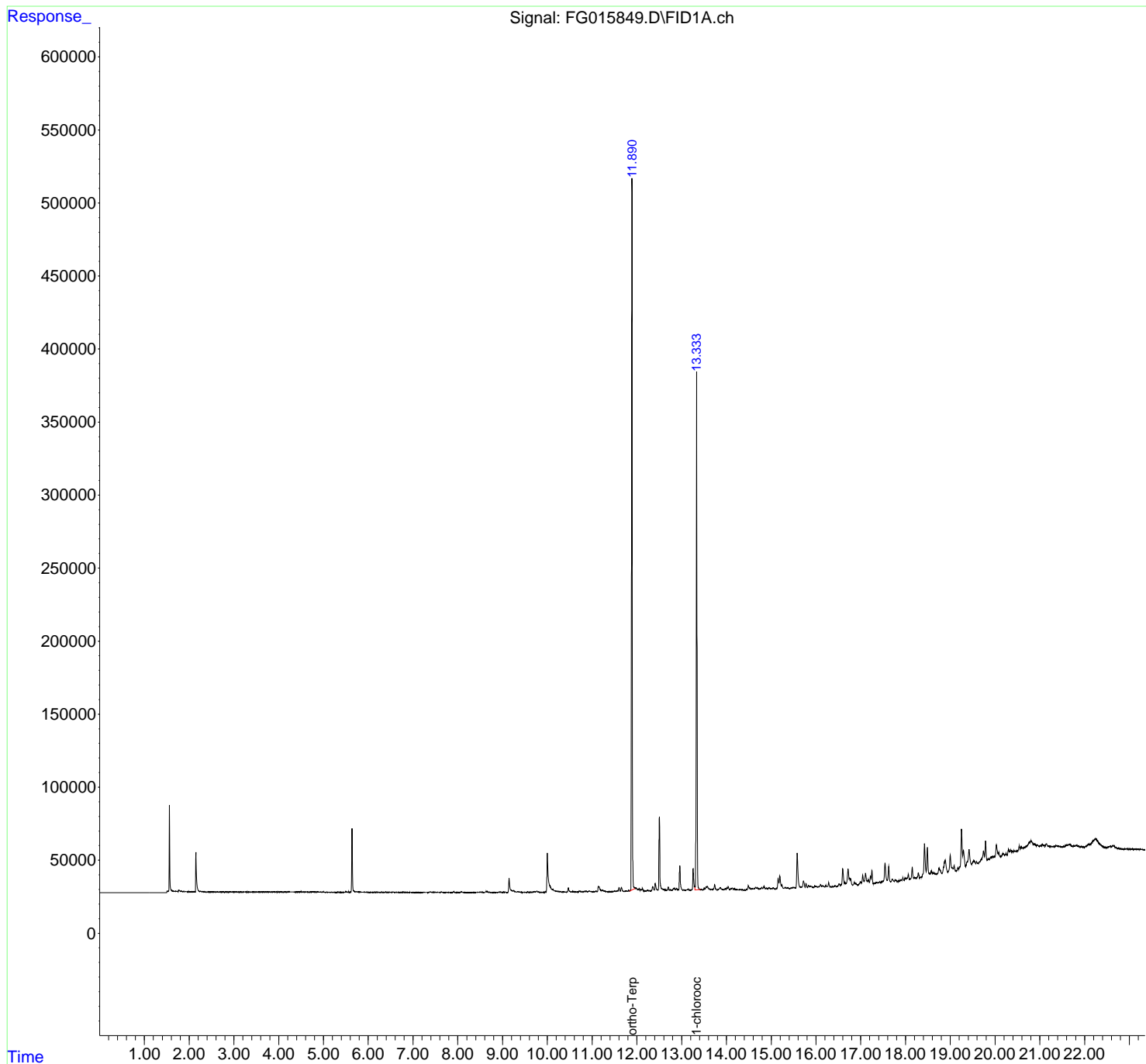
(m)=manual int.

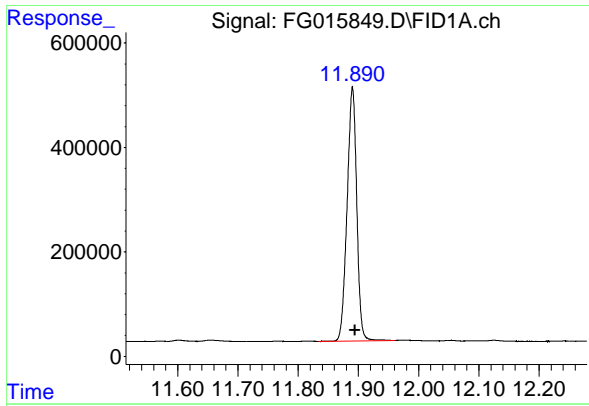
Data Path : Z:\pestpcbsrv\HPCHEM1\FID\_G\Data\FG051625AL\  
 Data File : FG015849.D  
 Signal(s) : FID1A.ch  
 Acq On : 16 May 2025 14:27  
 Operator : YP\AJ  
 Sample : Q2003-06  
 Misc :  
 ALS Vial : 27 Sample Multiplier: 1

Instrument :  
 FID\_G  
 ClientSampleId :  
 4

Integration File: autoint1.e  
 Quant Time: May 17 00:42:40 2025  
 Quant Method : Z:\pestpcbsrv\HPCHEM1\FID\_G\Method\Aliphatic EPH 051225.M  
 Quant Title : GC Extractables  
 QLast Update : Mon May 12 12:44:43 2025  
 Response via : Initial Calibration  
 Integrator: ChemStation

Volume Inj. : 1 ul  
 Signal Phase : Rxi-1ms  
 Signal Info : 20M x 0.18mm x 0.18um

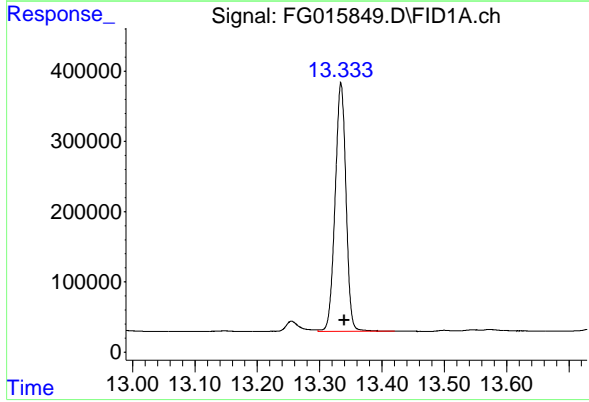




#9 ortho-Terphenyl (SURR)

R.T.: 11.890 min  
Delta R.T.: -0.004 min  
Response: 5408040  
Conc: 36.32 ug/ml

Instrument :  
FID\_G  
ClientSampleId :  
4



#12 1-chlorooctadecane (SURR)

R.T.: 13.334 min  
Delta R.T.: -0.005 min  
Response: 4278689  
Conc: 37.14 ug/ml