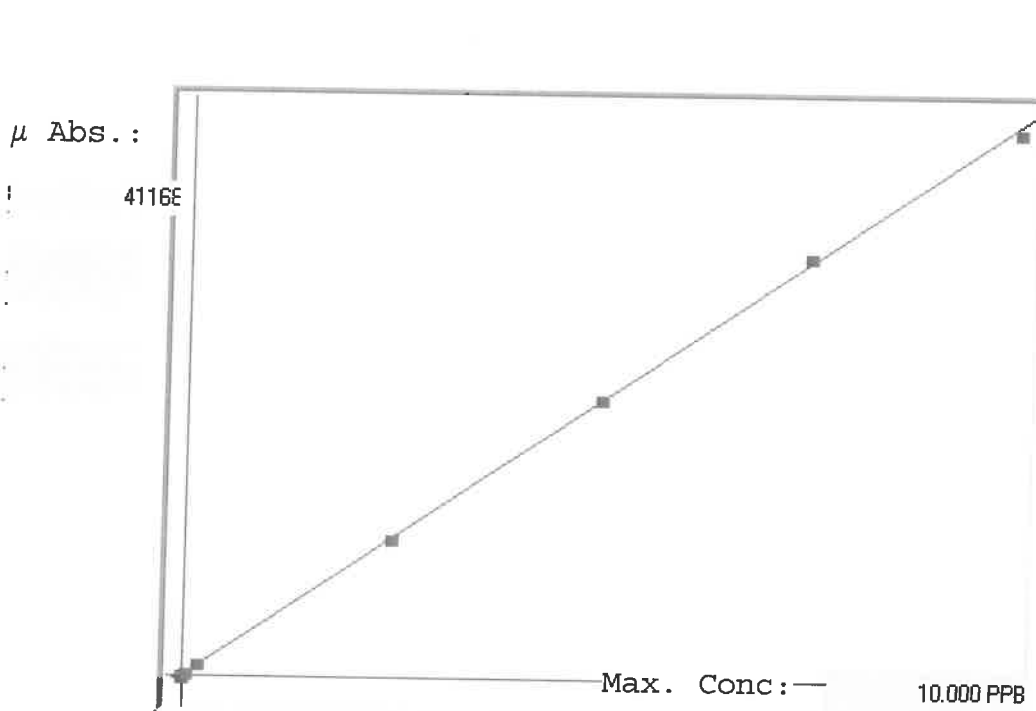


LB135881

245.1

INSTRUMENT ID: CV1



Linear

A= 0.0000e+000

B= 2.4000e-004

C= -6.0448e-004

Rho= 0.9998066

Accept=Accepted

Std ID	Conc.	Calc.	Dev.	Mean	SD or %RSD	Rep 1	Rep 2	Rep 3	Rep 4	Rep 5	%D
0.0	0.000	-0.056	-0.056	-229	0.000	-229					
0.05	0.050	0.058	0.008	245	0.0 %	245	0				16
0.2	0.200	0.210	0.010	879	0.0 %	879					5
2.5	2.500	2.480	-0.020	10336	0.0 %	10336					1
5.0	5.000	5.047	0.047	21030	0.0 %	21030					1
7.5	7.500	7.631	0.131	31796	0.0 %	31796					2
10.0	10.000	9.880	-0.120	41168	0.0 %	41168					1

# LB135881 INSTRUMENT ID : CV1

Method: 245.1

Operator: Admin

Date of Analysis: 22 May 2025 13:36:54

Sample ID	Extended ID	μ Abs.	Conc.	Std Conc	Method	Units	Date	Type	Type
0.0 - 1	50	-229	-	0.0000	245.1	PPB	22 May 2025 13:47:50	S	Std
0.05 - 1	26.25	245	-	0.0500	245.1	PPB	22 May 2025 13:50:07	S	Std
0.2 - 1	50.2	879	-	0.2000	245.1	PPB	22 May 2025 13:52:25	S	Std
2.5 - 1	32.25	10336	-	2.5000	245.1	PPB	22 May 2025 13:54:42	S	Std
5.0 - 1	55	21030	-	5.0000	245.1	PPB	22 May 2025 13:56:58	S	Std
7.5 - 1	37.5	31796	-	7.5000	245.1	PPB	22 May 2025 13:59:15	S	Std
10.0 - 1	51.6	41168	-	10.0000	245.1	PPB	22 May 2025 14:22:57	S	Std
ICV14 - 1	ICV14	17498	4.1990	-245.1		PPB	22 May 2025 14:28:39	U	SMPL
ICB14 - 1	ICB14	-263	-0.0637	-245.1		PPB	22 May 2025 14:30:54	U	SMPL
CCV53 - 1	CCV53	21540	5.1690	-245.1		PPB	22 May 2025 14:33:12	U	SMPL
CCB53 - 1	CCB53	-186	-0.0452	-245.1		PPB	22 May 2025 14:35:26	U	SMPL
CRA - 1	CRA	249	0.0592	-245.1		PPB	22 May 2025 14:37:44	U	SMPL
HighStd - 1	HighStd	40992	9.8376	-245.1		PPB	22 May 2025 14:39:59	U	SMPL
ChkStd - 1	ChkStd	28698	6.8870	-245.1		PPB	22 May 2025 14:42:14	U	SMPL
PB168130BL - 1	PBW	-125	-0.0306	-245.1		PPB	22 May 2025 14:44:32	U	SMPL
PB168130BS - 1	LCSW	15913	3.8186	-245.1		PPB	22 May 2025 14:46:50	U	SMPL
Q2006-02 - 1	EFF-WW	-134	-0.0328	-245.1		PPB	22 May 2025 14:49:07	U	SMPL
Q2006-02DUP - 1	EFF-WWDUP	109	0.0256	-245.1		PPB	22 May 2025 14:51:25	U	SMPL
Q2006-02MS - 1	EFF-WWMS	13603	3.2641	-245.1		PPB	22 May 2025 14:53:42	U	SMPL
Q2006-02MSD - 1	EFF-WWMSD	12573	3.0169	-245.1		PPB	22 May 2025 14:55:59	U	SMPL
CCV54 - 1	CCV54	20510	4.9218	-245.1		PPB	22 May 2025 14:58:17	U	SMPL
CCB54 - 1	CCB54	-170	-0.0414	-245.1		PPB	22 May 2025 15:00:35	U	SMPL
Q2006-02LX5 - 1		-39	-0.0100	-245.1		PPB	22 May 2025 15:02:53	U	SMPL
Q2006-02A - 1		16167	3.8795	-245.1		PPB	22 May 2025 15:05:10	U	SMPL
CCV55 - 1	CCV55	21312	5.1143	-245.1		PPB	22 May 2025 15:07:25	U	SMPL
CCB55 - 1	CCB55	-160	-0.0390	-245.1		PPB	22 May 2025 15:09:42	U	SMPL