

Data Path : Z:\pestpcbsrv\HPCHEM1\ECD_S\Data\PS051525\
 Data File : PS030236.D
 Signal(s) : Signal #1: ECD1A.ch Signal #2: ECD2B.ch
 Acq On : 15 May 2025 16:06
 Operator : AR\AJ
 Sample : HSTDCCC750
 Misc :
 ALS Vial : 3 Sample Multiplier: 1

Instrument :
 ECD_S
 ClientSampleId :
 HSTDCCC750

Integration File signal 1: autoint1.e
 Integration File signal 2: autoint2.e
 Quant Time: May 16 01:19:58 2025
 Quant Method : Z:\pestpcbsrv\HPCHEM1\ECD_S\Method\PS051225.M
 Quant Title : 8080.M
 QLast Update : Mon May 12 14:29:24 2025
 Response via : Initial Calibration
 Integrator: ChemStation

Volume Inj. : 1 µl
 Signal #1 Phase : ZB-MR1 Signal #2 Phase: ZB-MR2
 Signal #1 Info : 30M x 0.32mm x0.5 Signal #2 Info : 30M x 0.32mm x 0.25µm

Compound	RT#1	RT#2	Resp#1	Resp#2	ng/ml	ng/ml
System Monitoring Compounds						
4) S 2,4-DCAA	6.932	7.451	2091.4E6	594.7E6	734.393	743.232
Target Compounds						
1) T Dalapon	2.446	2.519	3262.5E6	1361.9E6	663.733	670.552
2) T 3,5-DICHL...	6.137	6.451	2843.6E6	782.6E6	681.823	671.244
3) T 4-Nitroph...	6.723	6.986	1400.0E6	649.7E6	677.752	622.335
5) T DICAMBA	7.109	7.636	8092.2E6	3397.0E6	700.173	718.482
6) T MCPP	7.288	7.745	549.4E6	129.5E6	75.436	70.384
7) T MCPA	7.430	7.975	724.1E6	171.7E6	69.758	65.077
8) T DICHLORPROP	7.789	8.329	2010.7E6	814.4E6	688.272	689.297
9) T 2,4-D	8.008	8.641	2264.9E6	917.4E6	690.733	710.882
10) T Pentachlo...	8.286	9.141	28886.5E6	18028.4E6	713.233	730.340
11) T 2,4,5-TP ...	8.849	9.519	11460.4E6	7121.8E6	707.607	722.990
12) T 2,4,5-T	9.131	9.923	11688.3E6	6625.7E6	707.730	719.899
13) T 2,4-DB	9.689	10.481	1966.4E6	661.2E6	753.459	666.277
14) T DINOSEB	10.850	10.855	7795.4E6	4796.0E6	681.631	701.991
15) T Picloram	10.670	11.890	15214.0E6	20610.4E6	711.368	1464.521 #
16) T DCPA	11.151	11.890	13929.4E6	20610.4E6	699.568	1525.506 #

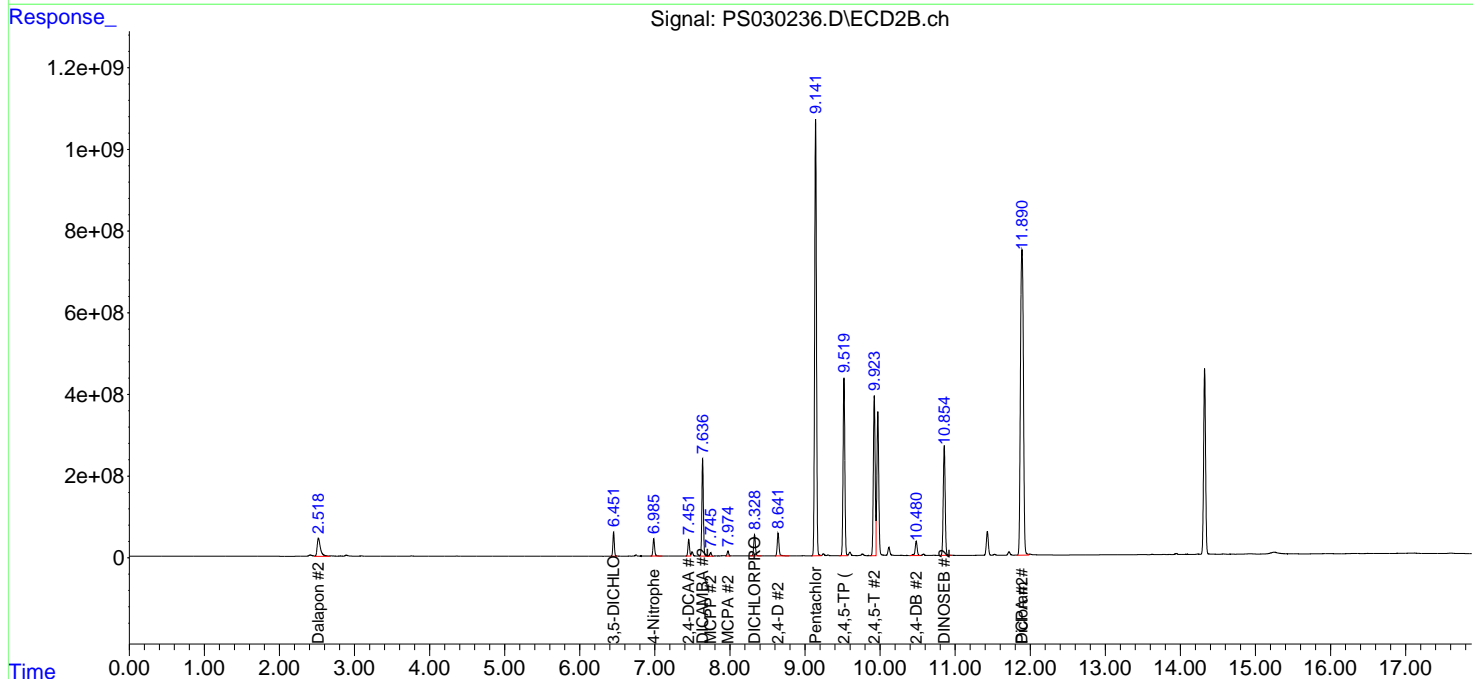
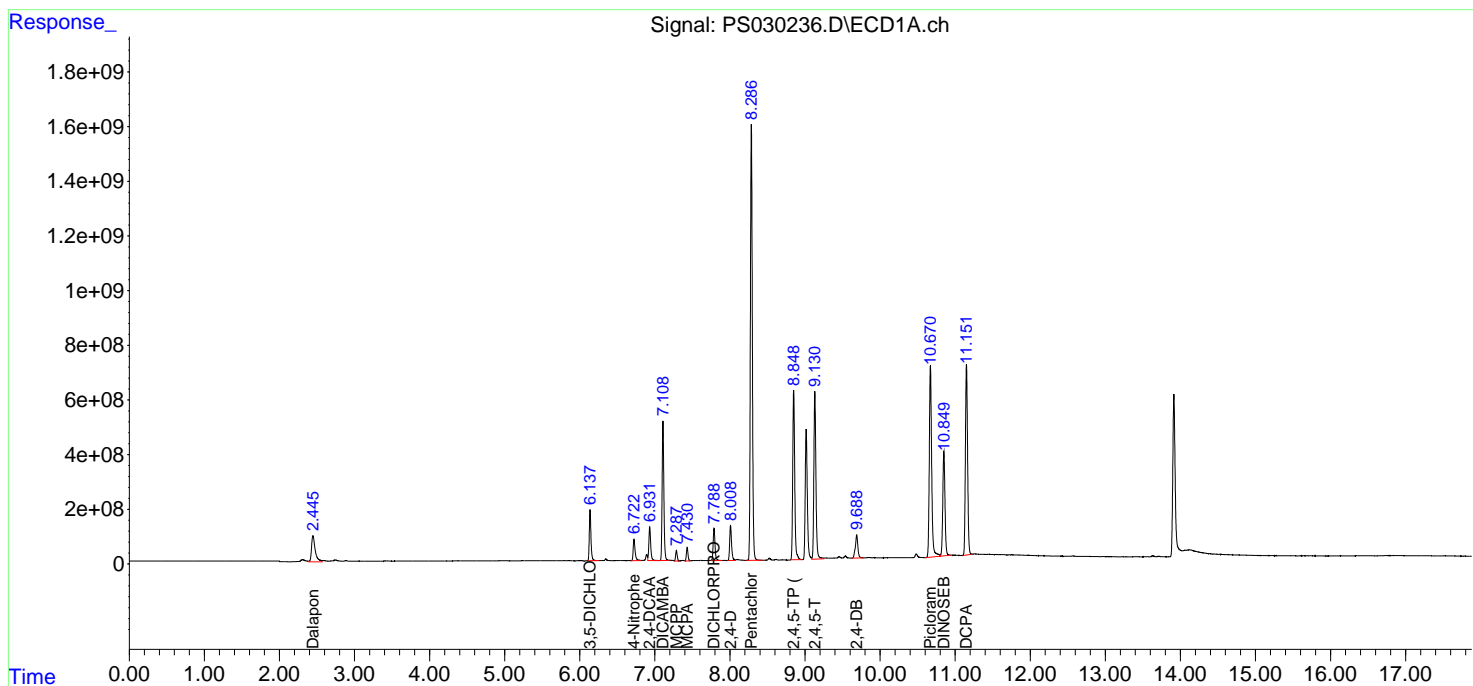
(f)=RT Delta > 1/2 Window (#)=Amounts differ by > 25% (m)=manual int.

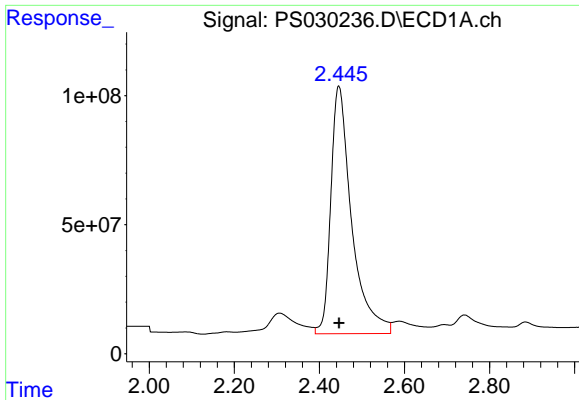
Data Path : Z:\pestpcbsrv\HPCHEM1\ECD_S\Data\PS051525\
 Data File : PS030236.D
 Signal(s) : Signal #1: ECD1A.ch Signal #2: ECD2B.ch
 Acq On : 15 May 2025 16:06
 Operator : AR\AJ
 Sample : HSTDCCC750
 Misc :
 ALS Vial : 3 Sample Multiplier: 1

Instrument :
 ECD_S
 ClientSampleId :
 HSTDCCC750

Integration File signal 1: autoint1.e
 Integration File signal 2: autoint2.e
 Quant Time: May 16 01:19:58 2025
 Quant Method : Z:\pestpcbsrv\HPCHEM1\ECD_S\Method\PS051225.M
 Quant Title : 8080.M
 QLast Update : Mon May 12 14:29:24 2025
 Response via : Initial Calibration
 Integrator: ChemStation

Volume Inj. : 1 µl
 Signal #1 Phase : ZB-MR1 Signal #2 Phase: ZB-MR2
 Signal #1 Info : 30M x 0.32mm x0.5 Signal #2 Info : 30M x 0.32mm x 0.25µm

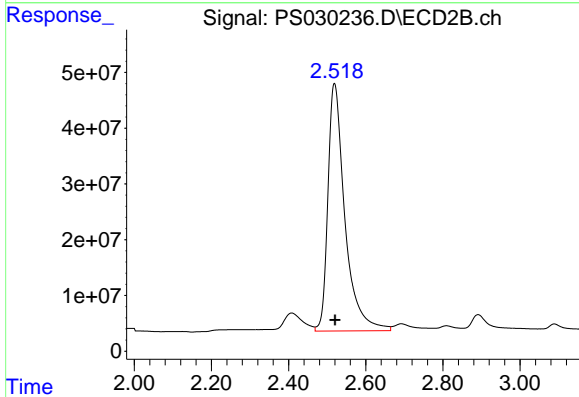




#1 Dalapon

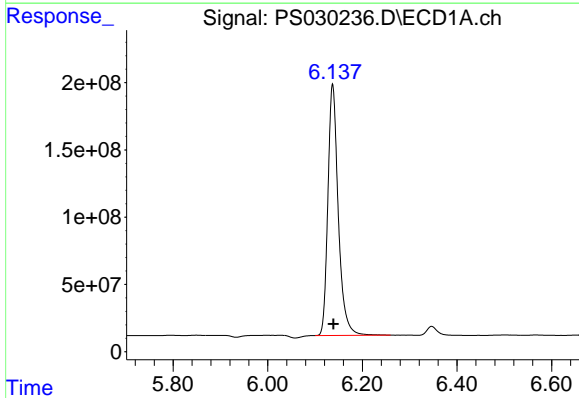
R.T.: 2.446 min
 Delta R.T.: 0.000 min
 Response: 3262487905
 Conc: 663.73 ng/ml

Instrument :
 ECD_S
 ClientSampleId :
 HSTDCCC750



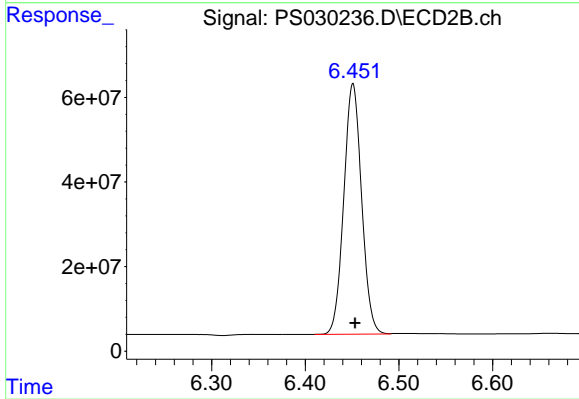
#1 Dalapon

R.T.: 2.519 min
 Delta R.T.: -0.001 min
 Response: 1361924349
 Conc: 670.55 ng/ml



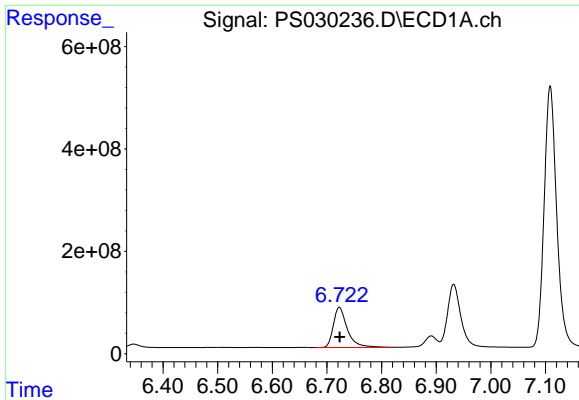
#2 3,5-DICHLOROBENZOIC ACID

R.T.: 6.137 min
 Delta R.T.: -0.001 min
 Response: 2843577490
 Conc: 681.82 ng/ml



#2 3,5-DICHLOROBENZOIC ACID

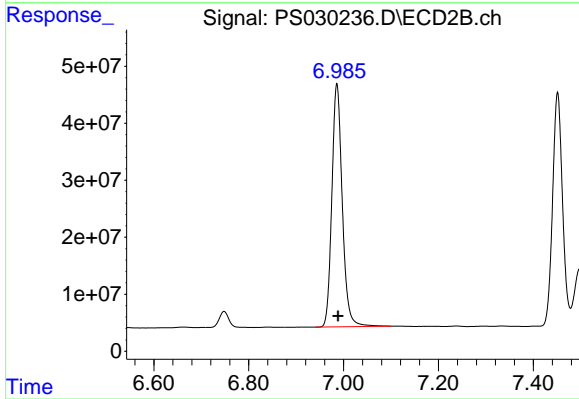
R.T.: 6.451 min
 Delta R.T.: -0.002 min
 Response: 782556701
 Conc: 671.24 ng/ml



#3 4-Nitrophenol

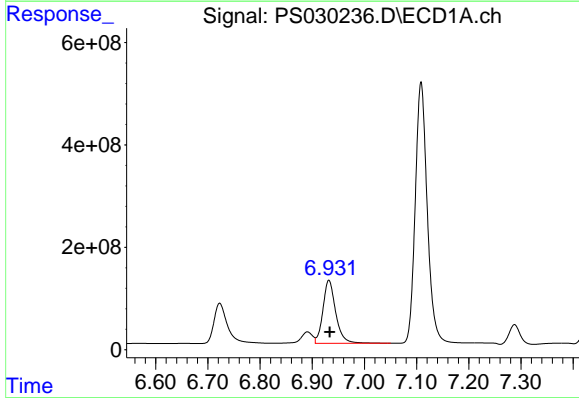
R.T.: 6.723 min
 Delta R.T.: 0.000 min
 Response: 1399973086
 Conc: 677.75 ng/ml

Instrument :
 ECD_S
 ClientSampleId :
 HSTDCCC750



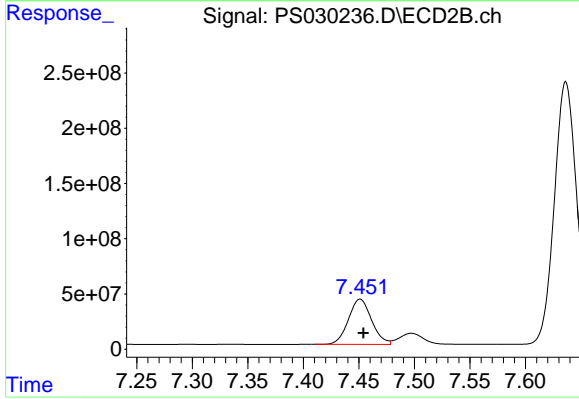
#3 4-Nitrophenol

R.T.: 6.986 min
 Delta R.T.: -0.003 min
 Response: 649737880
 Conc: 622.34 ng/ml



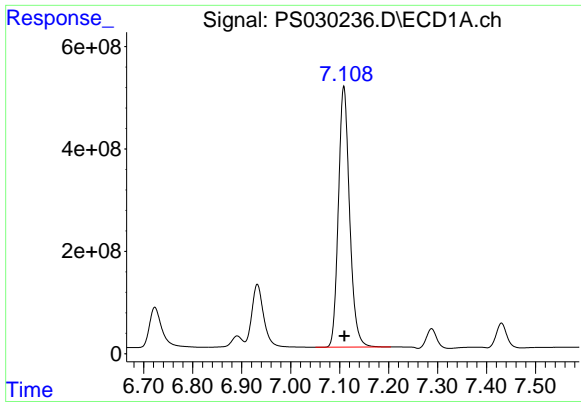
#4 2,4-DCAA

R.T.: 6.932 min
 Delta R.T.: -0.002 min
 Response: 2091410731
 Conc: 734.39 ng/ml



#4 2,4-DCAA

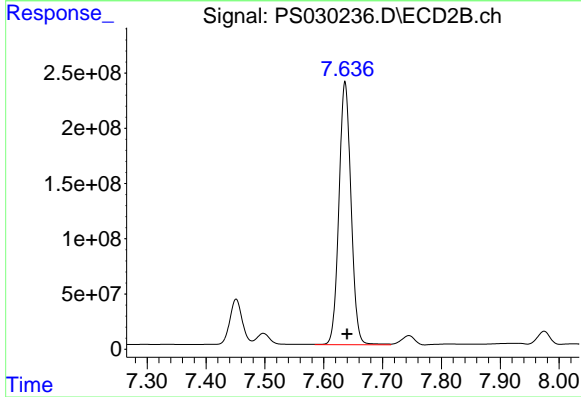
R.T.: 7.451 min
 Delta R.T.: -0.003 min
 Response: 594736576
 Conc: 743.23 ng/ml



#5 DICAMBA

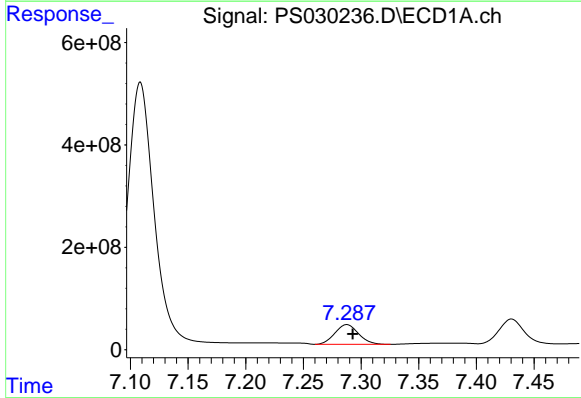
R.T.: 7.109 min
 Delta R.T.: -0.002 min
 Response: 8092159153
 Conc: 700.17 ng/ml

Instrument :
 ECD_S
 ClientSampleId :
 HSTDCCC750



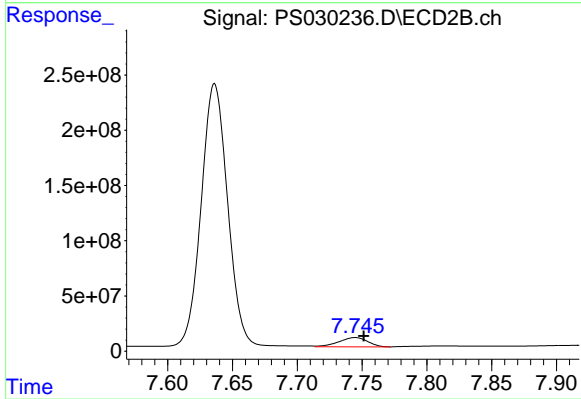
#5 DICAMBA

R.T.: 7.636 min
 Delta R.T.: -0.004 min
 Response: 3396967833
 Conc: 718.48 ng/ml



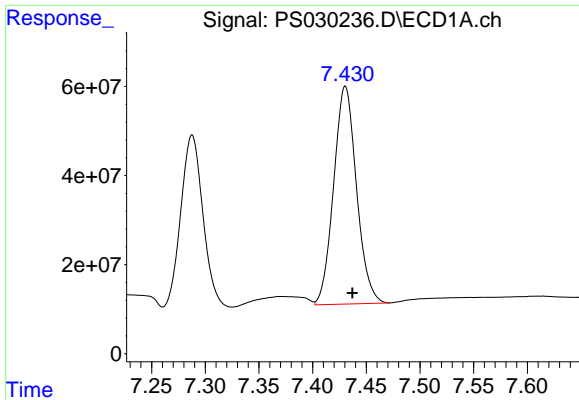
#6 MCP

R.T.: 7.288 min
 Delta R.T.: -0.005 min
 Response: 549374371
 Conc: 75.44 ug/ml



#6 MCP

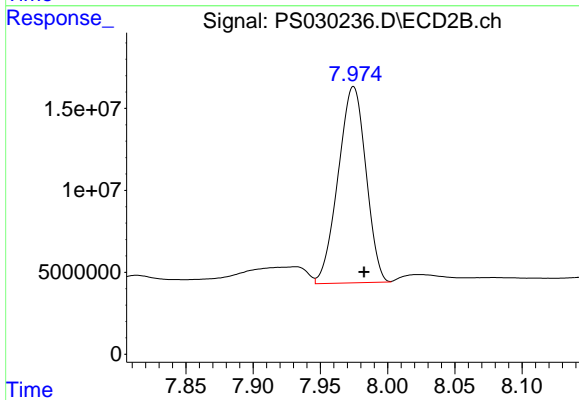
R.T.: 7.745 min
 Delta R.T.: -0.007 min
 Response: 129490755
 Conc: 70.38 ug/ml



#7 MCPA

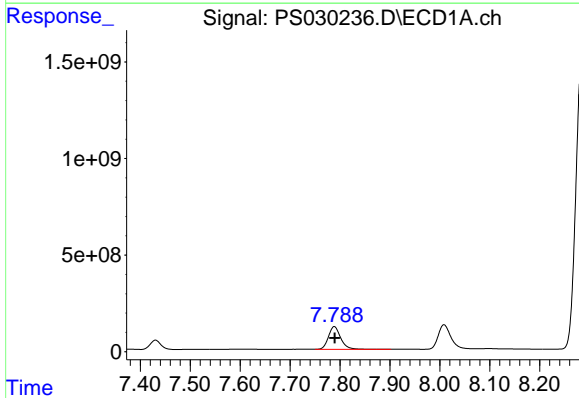
R.T.: 7.430 min
 Delta R.T.: -0.006 min
 Response: 724148944
 Conc: 69.76 ug/ml

Instrument :
 ECD_S
 ClientSampleId :
 HSTDCCC750



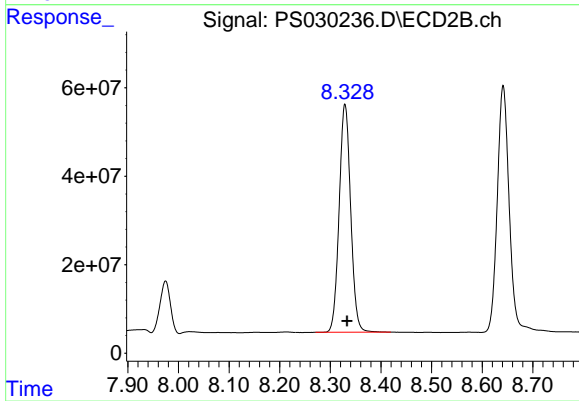
#7 MCPA

R.T.: 7.975 min
 Delta R.T.: -0.008 min
 Response: 171651593
 Conc: 65.08 ug/ml



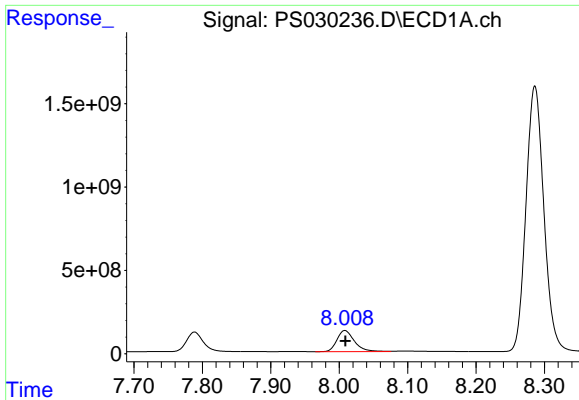
#8 DICHLORPROP

R.T.: 7.789 min
 Delta R.T.: 0.000 min
 Response: 2010679890
 Conc: 688.27 ng/ml



#8 DICHLORPROP

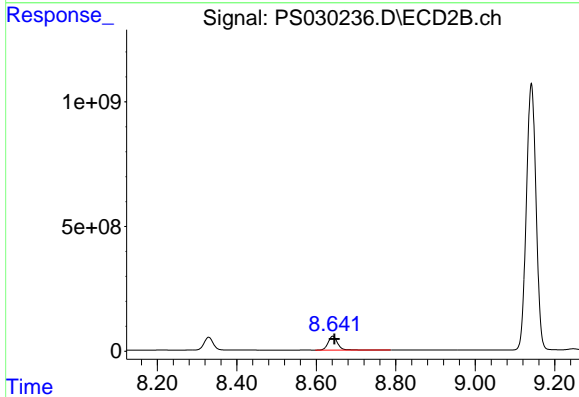
R.T.: 8.329 min
 Delta R.T.: -0.004 min
 Response: 814358017
 Conc: 689.30 ng/ml



#9 2,4-D

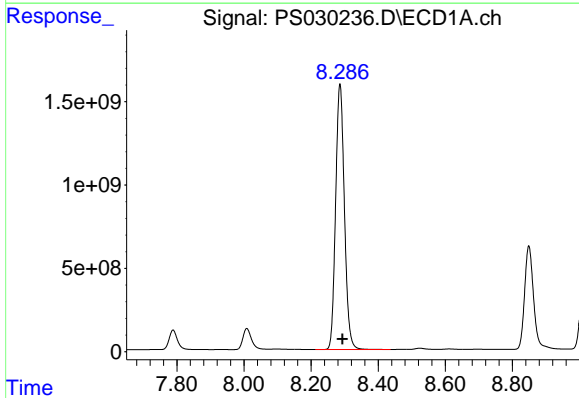
R.T.: 8.008 min
 Delta R.T.: 0.000 min
 Response: 2264870721
 Conc: 690.73 ng/ml

Instrument :
 ECD_S
 ClientSampleId :
 HSTDCCC750



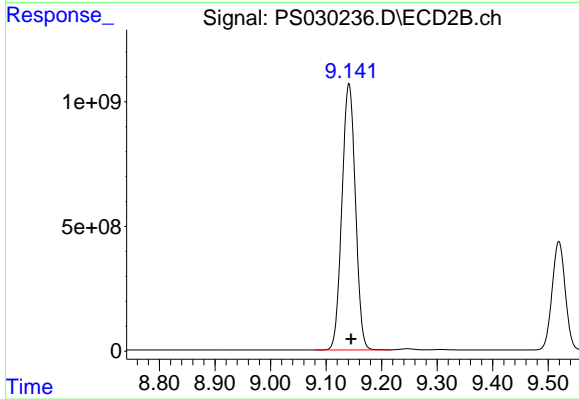
#9 2,4-D

R.T.: 8.641 min
 Delta R.T.: -0.004 min
 Response: 917393222
 Conc: 710.88 ng/ml



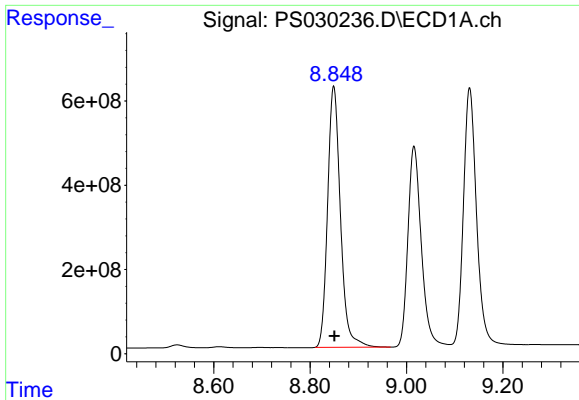
#10 Pentachlorophenol

R.T.: 8.286 min
 Delta R.T.: -0.007 min
 Response: 28886495671
 Conc: 713.23 ng/ml



#10 Pentachlorophenol

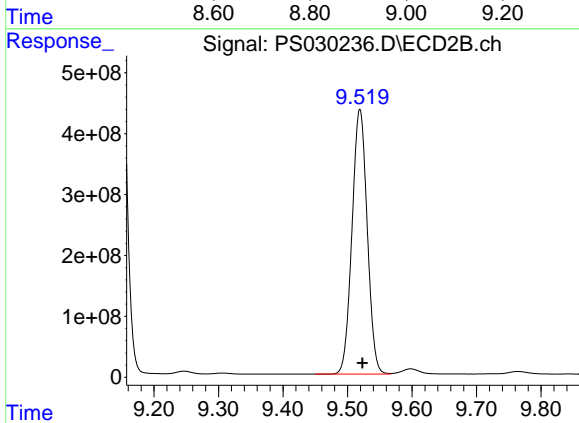
R.T.: 9.141 min
 Delta R.T.: -0.004 min
 Response: 18028419638
 Conc: 730.34 ng/ml



#11 2,4,5-TP (SILVEX)

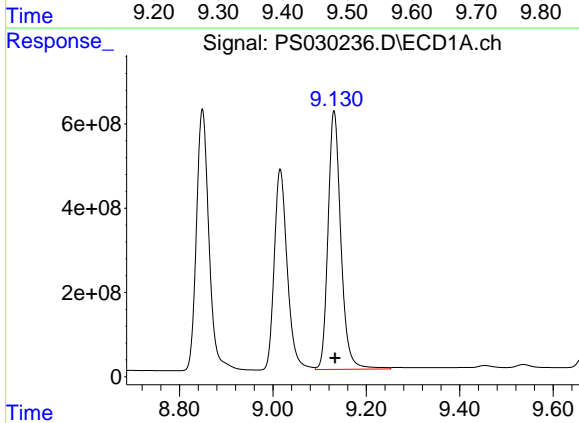
R.T.: 8.849 min
 Delta R.T.: -0.002 min
 Response: 11460400801
 Conc: 707.61 ng/ml

Instrument :
 ECD_S
 ClientSampleId :
 HSTDCCC750



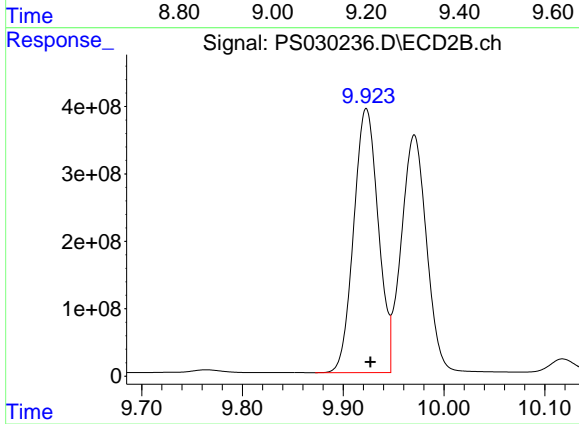
#11 2,4,5-TP (SILVEX)

R.T.: 9.519 min
 Delta R.T.: -0.004 min
 Response: 712176250
 Conc: 722.99 ng/ml



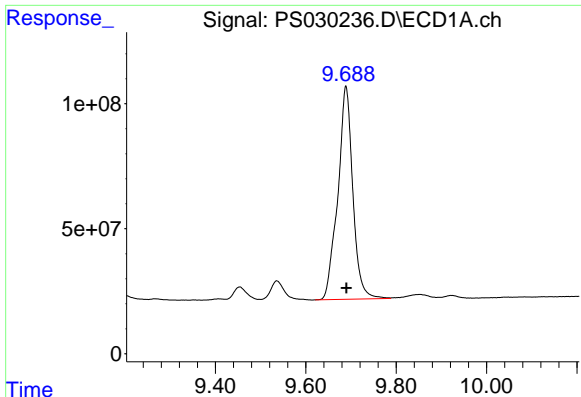
#12 2,4,5-T

R.T.: 9.131 min
 Delta R.T.: -0.002 min
 Response: 11688298434
 Conc: 707.73 ng/ml



#12 2,4,5-T

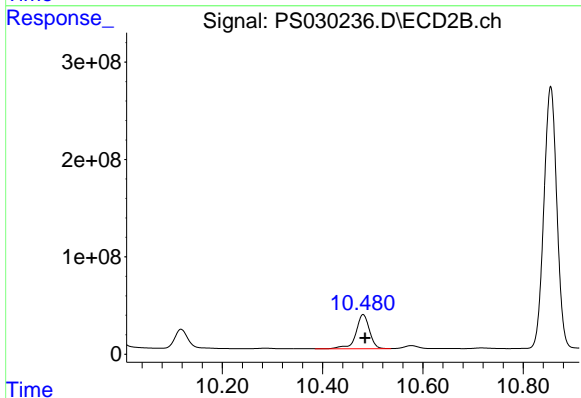
R.T.: 9.923 min
 Delta R.T.: -0.004 min
 Response: 6625666127
 Conc: 719.90 ng/ml



#13 2,4-DB

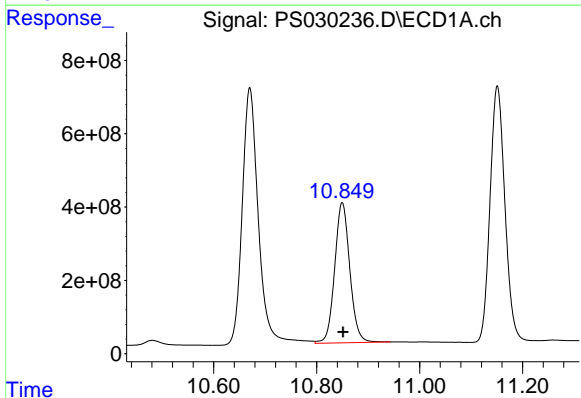
R.T.: 9.689 min
 Delta R.T.: -0.001 min
 Response: 1966356250
 Conc: 753.46 ng/ml

Instrument :
 ECD_S
 ClientSampleId :
 HSTDCCC750



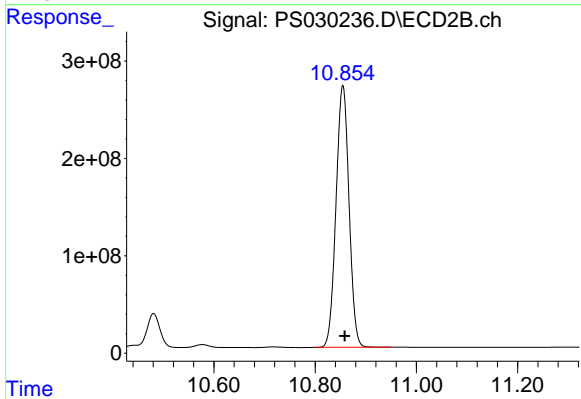
#13 2,4-DB

R.T.: 10.481 min
 Delta R.T.: -0.004 min
 Response: 661194801
 Conc: 666.28 ng/ml



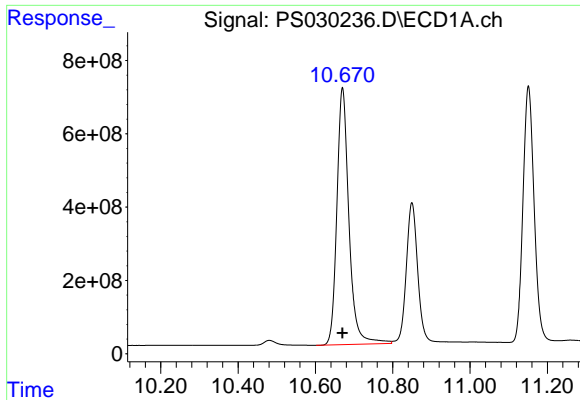
#14 DINOSEB

R.T.: 10.850 min
 Delta R.T.: -0.002 min
 Response: 7795378038
 Conc: 681.63 ng/ml



#14 DINOSEB

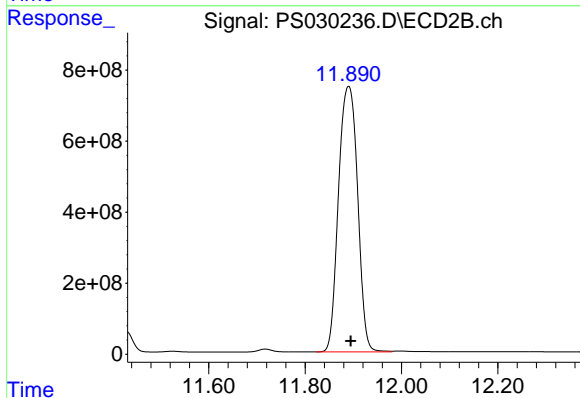
R.T.: 10.855 min
 Delta R.T.: -0.004 min
 Response: 4795989292
 Conc: 701.99 ng/ml



#15 Picloram

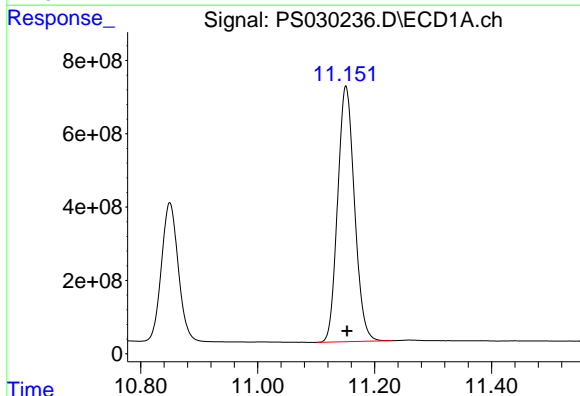
R.T.: 10.670 min
 Delta R.T.: 0.000 min
 Response: 15214004644
 Conc: 711.37 ng/ml

Instrument :
 ECD_S
 ClientSampleId :
 HSTDCCC750



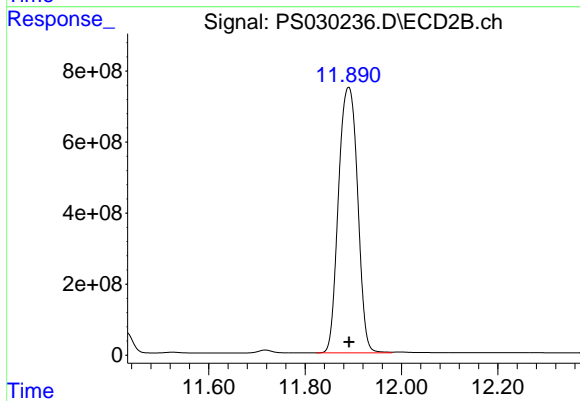
#15 Picloram

R.T.: 11.890 min
 Delta R.T.: -0.005 min
 Response: 20610373681
 Conc: 1464.52 ng/ml



#16 DCPA

R.T.: 11.151 min
 Delta R.T.: -0.002 min
 Response: 13929446063
 Conc: 699.57 ng/ml



#16 DCPA

R.T.: 11.890 min
 Delta R.T.: -0.001 min
 Response: 20610373681
 Conc: 1525.51 ng/ml